

V&V Reference Report

L2 ASCDS Version : 8.5

Observation 5041 - L2 Version 4
Chandra X-Ray Center

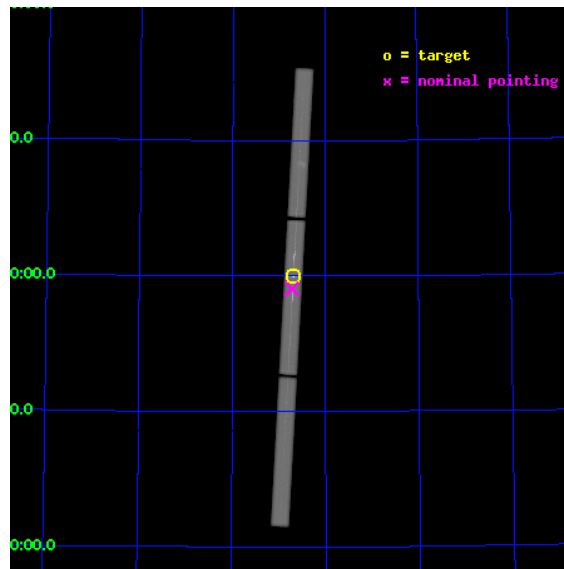
L2 Processing Date : Dec 11 2012

Contents

1	Front	2
2	OBI	3
2.1	OBI	3
2.1.1	Images	3
2.1.2	Parameters	4
2.1.3	Events	4
2.2	Compared Parameters	5
2.3	Aspect	6
2.4	Star Slots	9
2.4.1	Slot 3	9
2.4.2	Slot 4	10
2.4.3	Slot 5	11
2.4.4	Slot 6	12
2.4.5	Slot 7	13
2.5	FID Slots	14
2.5.1	Slot 0	14
2.5.2	Slot 1	15
2.5.3	Slot 2	16
3	Gratings	17
3.1	LETG Arm	17
A	Summary	19
A.1	Status	19
A.2	Comments	19

1 Front

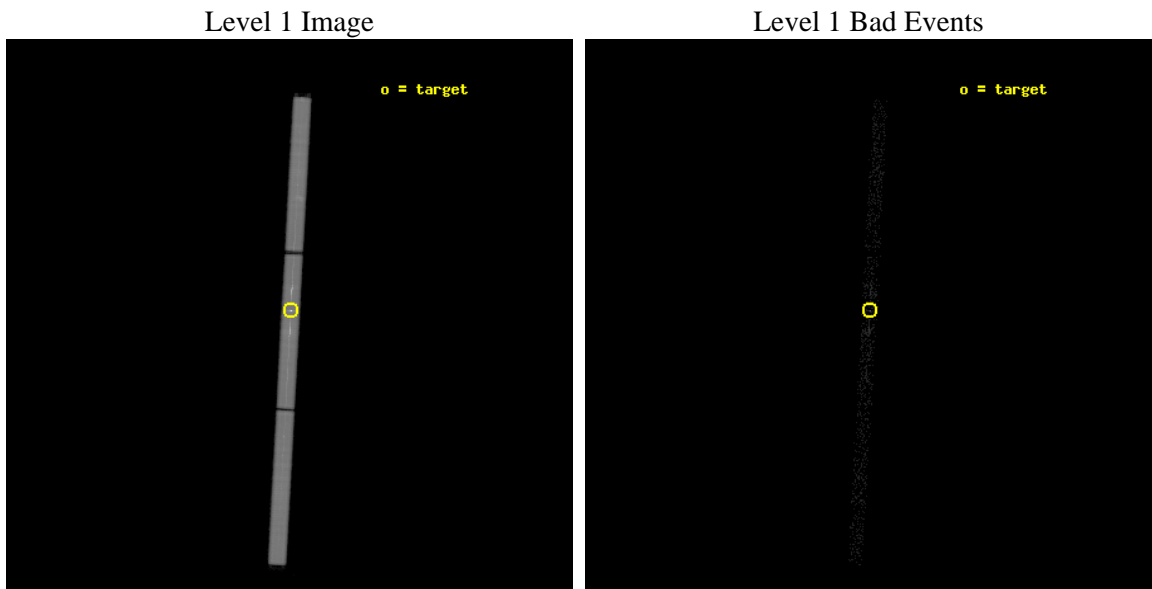
seq_num	290314	Sequence number
obs_id	5041	Observation id
title	AO5 Calibration Observations of Capella	Proposal title
observer	Dr. CXC Calibration	Principal investigator
object	Capella	Source name
ra_targ	79.17625	Observer's specified target RA [deg]
dec_targ	45.997889	Observer's specified target Dec [deg]
ra_nom	79.179817404901	Nominal RA [deg]
dec_nom	45.952652383619	Nominal Dec [deg]
roll_nom	93.064773126091	Nominal Roll [deg]
revision	4	Processing version of data
ontime	28884.501289129	[s]
livedtime	28669.422901624	Ontime multiplied by DTCOR
l2events	1792809	Number of level 2 events



2 OBI

2.1 OBI

2.1.1 Images



2.1.2 Parameters

obi_num	0	Obi number	sched_exp_time	29000.000000	[s] Scheduled observation exposure time
ascdsver	8.5	Processing system revision	ontime	28884.501289129	[s]
caldsver	4.5.4	 	l1events	2402962	Number of level 1 events
date	2012-12-11T19:55:12	Date and time of file creation			
revision	4	Processing version of data			

2.1.3 Events

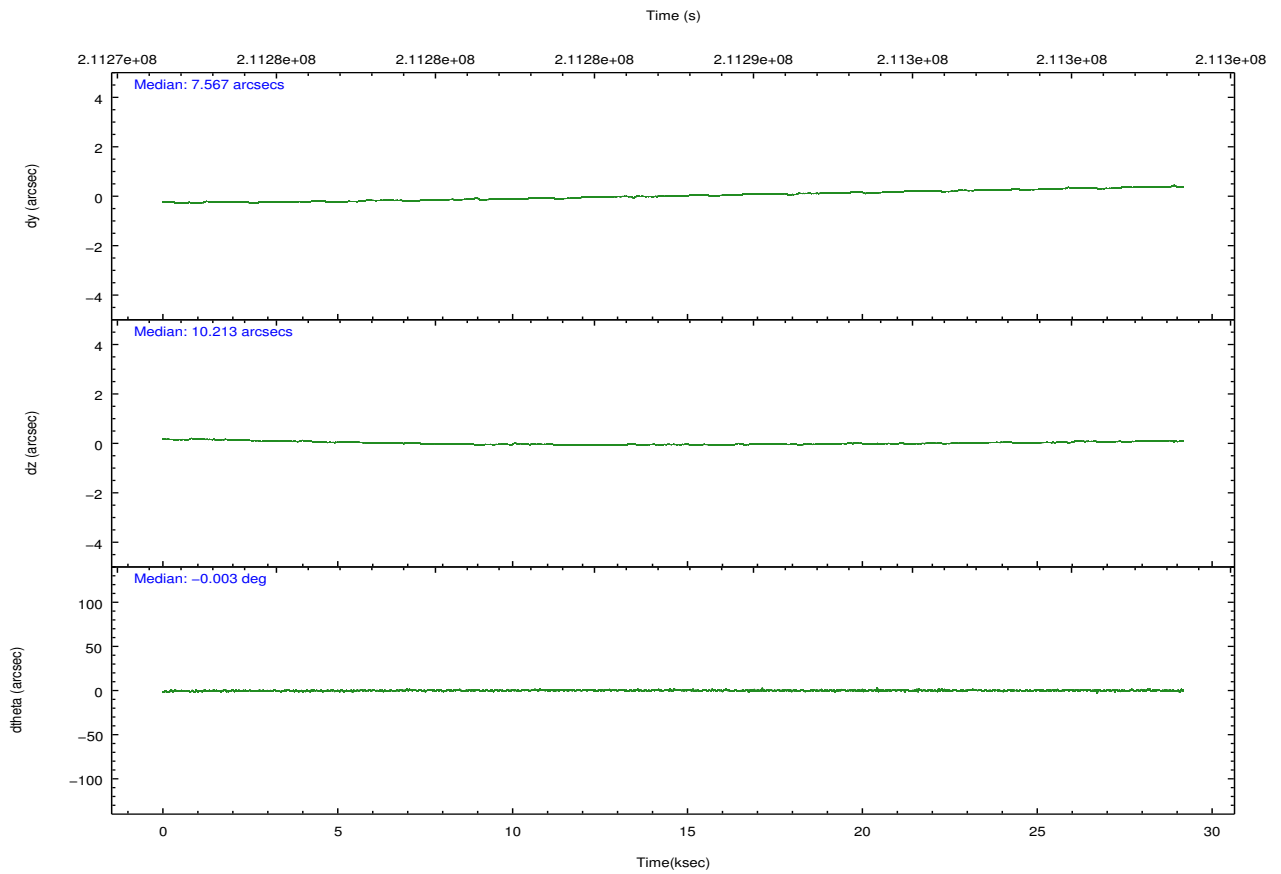
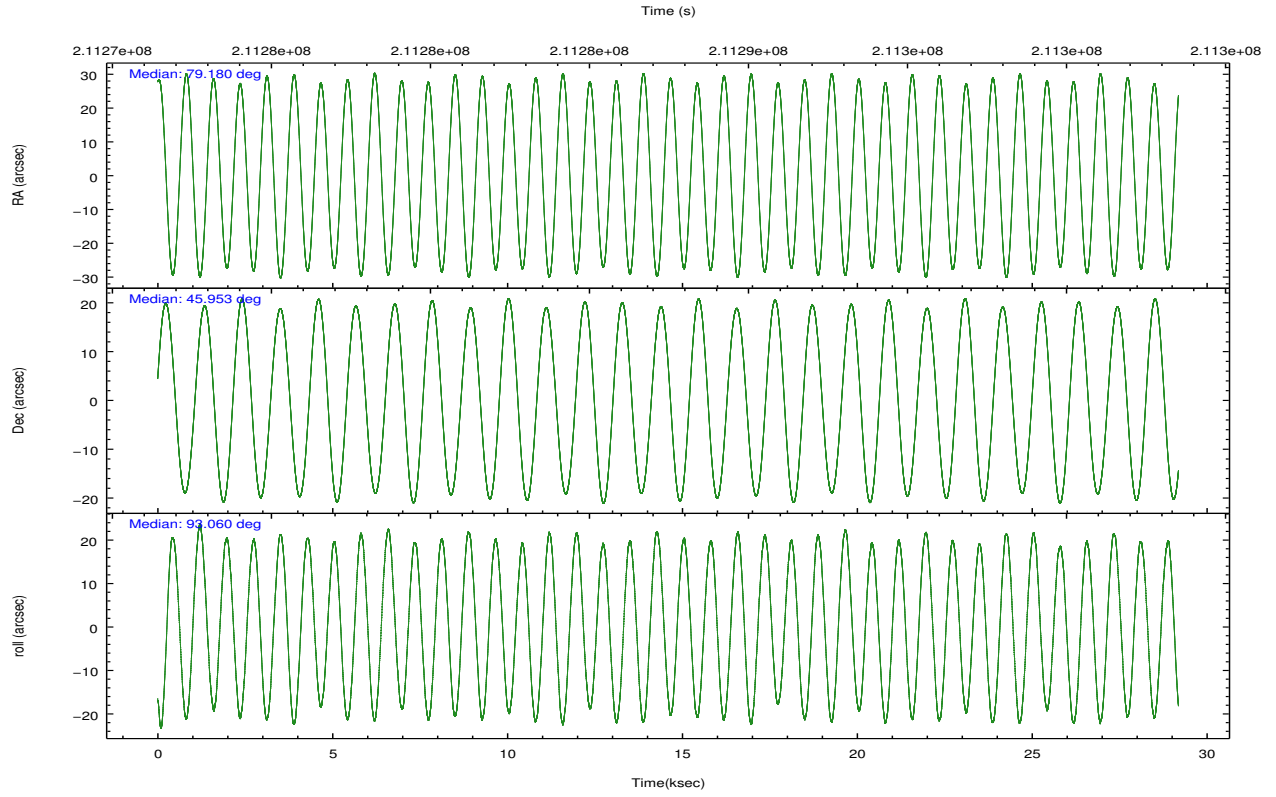
Level 1 Events

	segment 1	segment 2	segment 3
level 1 events	754791	874831	773340
rejected events	2204	2684	2349
rejected %	0%	0%	0%

2.2 Compared Parameters

Parameter	Planned	Actual	Parameter	Planned	Actual
Instrument	HRC	HRC	Obspar format version number	7	7
Detector	HRC-S	HRC-S	Obspar file type	PREDICTED	ACTUAL
Grating	LETG	LETG	Obspar update status	NONE	UPDATED
Data mode	OBSERVING	OBSERVING			
Observation mode	POINTING	POINTING			
[deg] Pointing RA	79.203965	79.1798174049015			
[deg] Pointing Dec	45.929464	45.95265238361941			
[deg] Pointing Roll	92.980080	93.06477312609125			
[s] Window start time (MET)	210384064.184000	210384064.184000			
[s] Window stop time (MET)	215568064.184000	215568064.184000			
[mm] SIM focus pos	-1.429586	-1.428180813131781			
[mm] SIM defocus	0.1037507710433287	0.1051558262725154			
[mm] SIM translation stage pos	250.455976	250.466033080201			
[mm] SIM translation stage offset	0	-0.01005468664627074			
[s] Observation start time (MET)	211273061.184000	211272817.97918			
Observation start date	2004-09-11T06:56:37	2004-09-11T06:53:37			
[s] Observation end time (MET)	211302061.184000	211302908.90553			
Observation end date	2004-09-11T14:59:57	2004-09-11T15:15:08			

2.3 Aspect

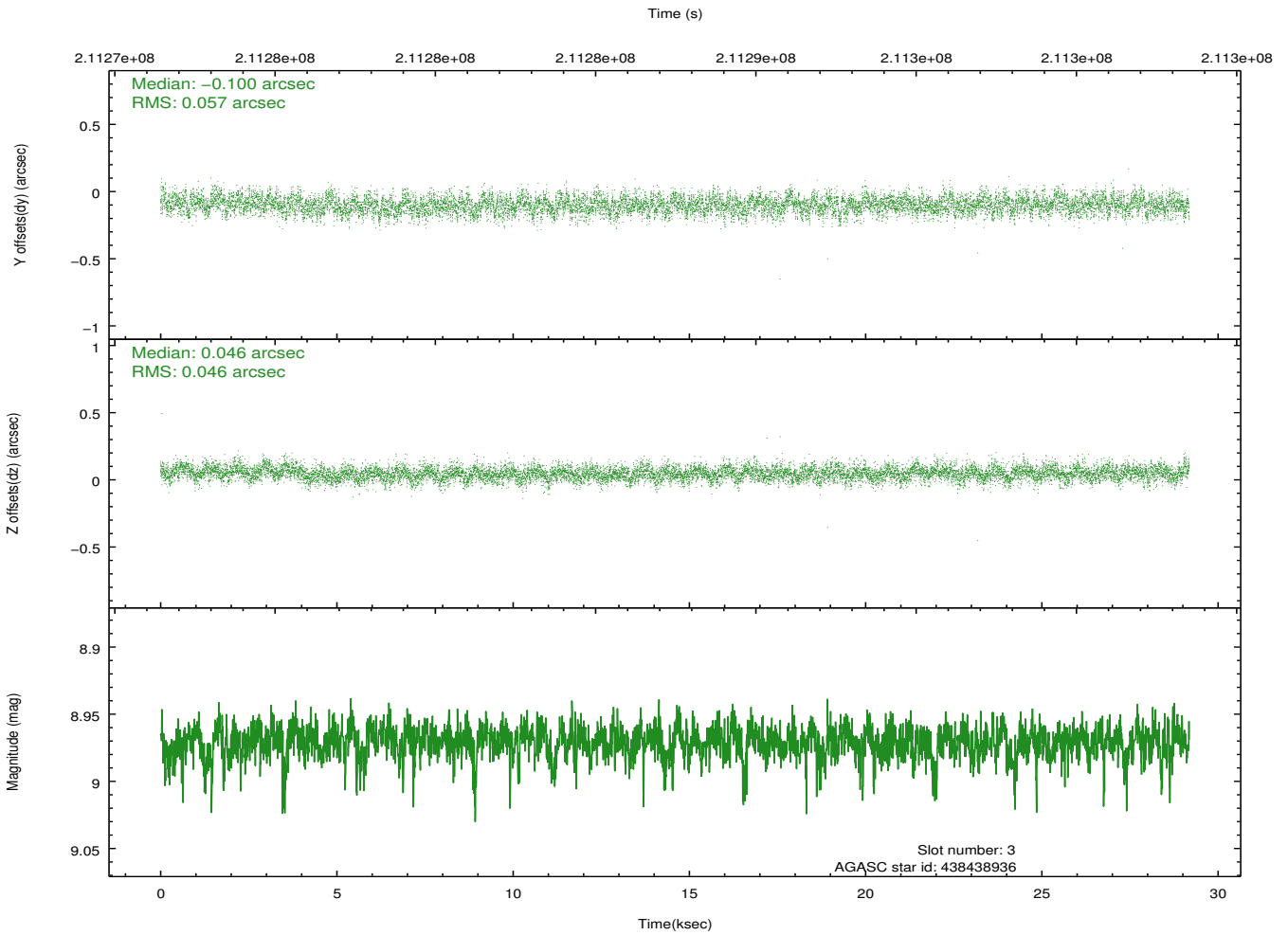
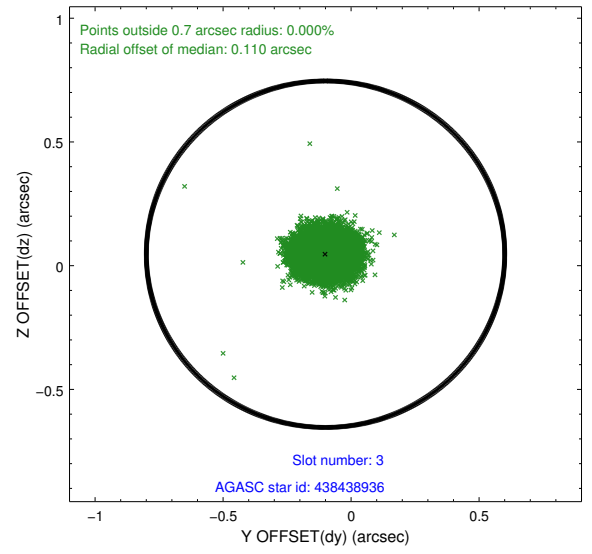
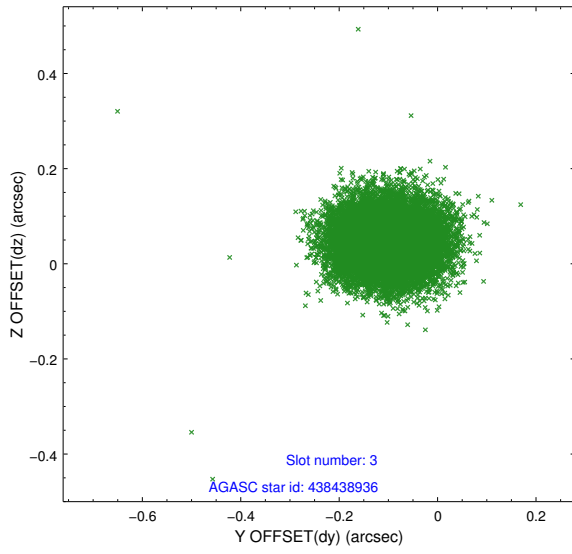


Slot Statistics

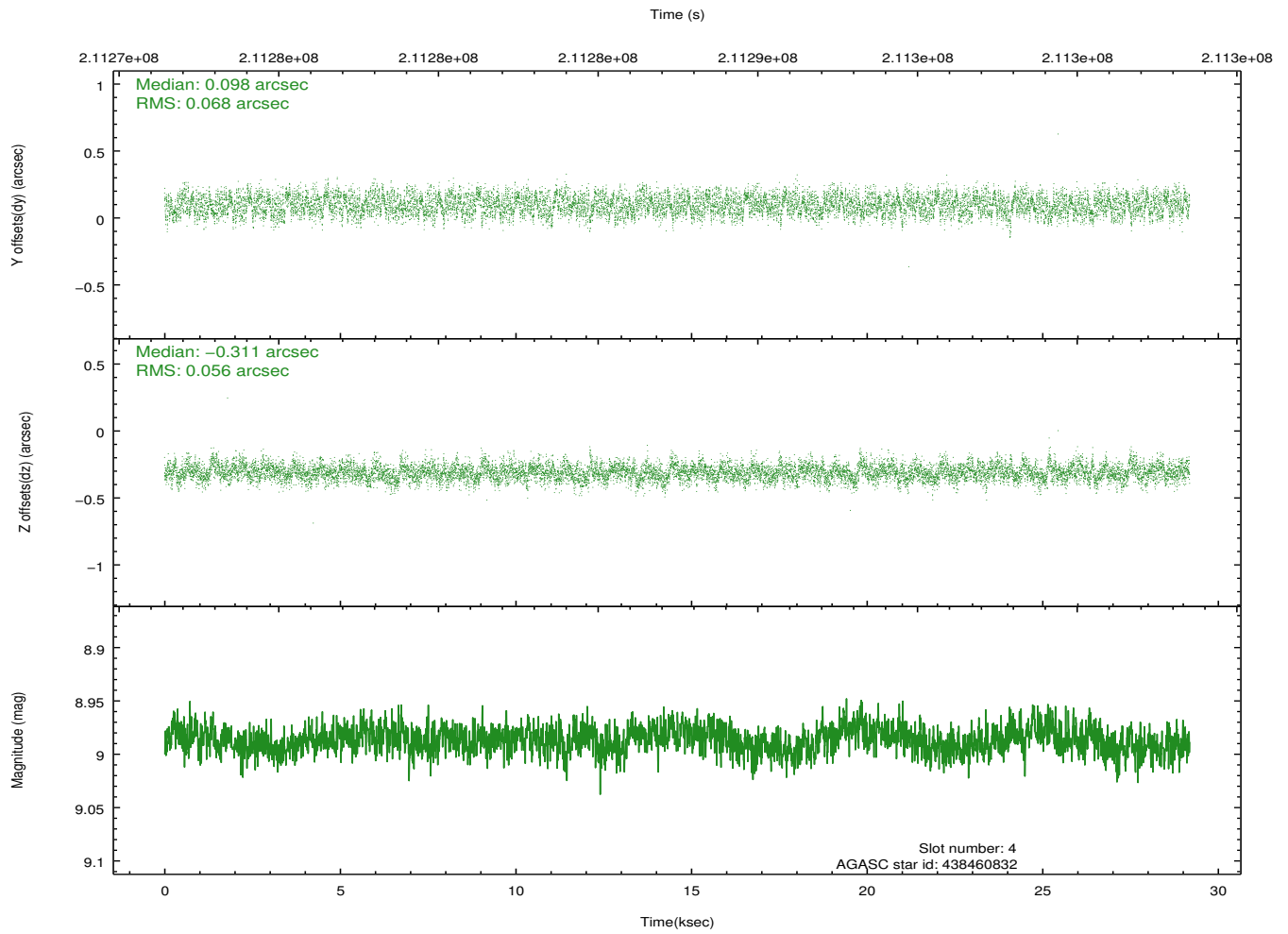
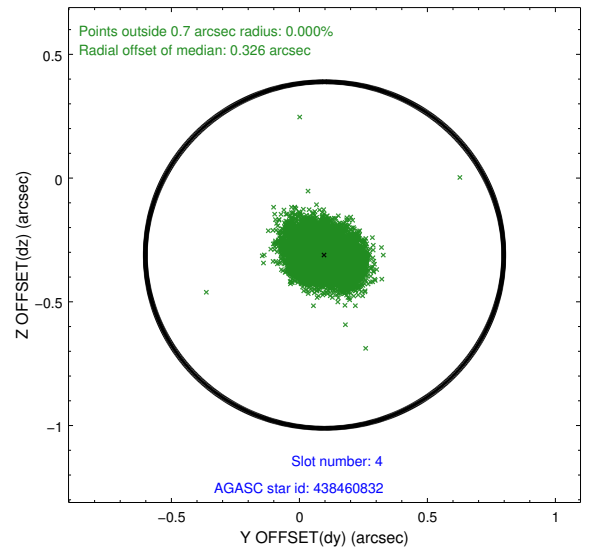
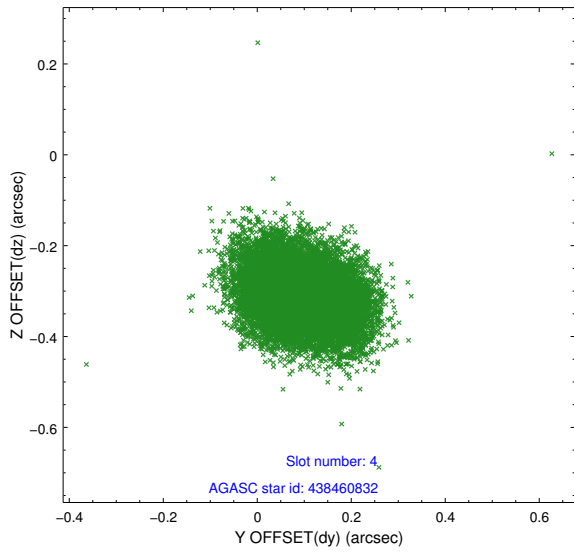
slot	status	id	mag	n_pts	med_dy	med_dz	dr1	dr2	ra	dec	mean_y	mean_z
0	FID	HRC-S-1	6.99	7119	0.142	-0.186	0.009	0.022	0.000000	0.000000	-1161.75	-458.93
1	FID	HRC-S-2	6.99	7119	0.153	-0.115	0.006	0.023	0.000000	0.000000	1237.78	-451.60
2	FID	HRC-S-3	7.00	7119	0.095	-0.001	0.008	0.012	0.000000	0.000000	-1164.33	570.72
3	GUIDE	438438936	8.97	14229	-0.100	0.046	0.078	0.125	78.241026	46.550197	2369.87	2264.28
4	GUIDE	438460832	8.99	14229	0.098	-0.311	0.094	0.151	78.414614	45.554782	-1233.77	2056.53
5	GUIDE	440145944	9.09	14226	0.075	0.238	0.100	0.158	80.083717	45.428844	-1902.98	-2126.33
6	GUIDE	440150048	7.20	14238	-0.182	-0.124	0.072	0.108	79.112838	46.416060	1761.01	134.72
7	GUIDE	440163960	8.90	14230	0.109	0.153	0.071	0.115	79.298370	45.827072	-379.90	-217.23

2.4 Star Slots

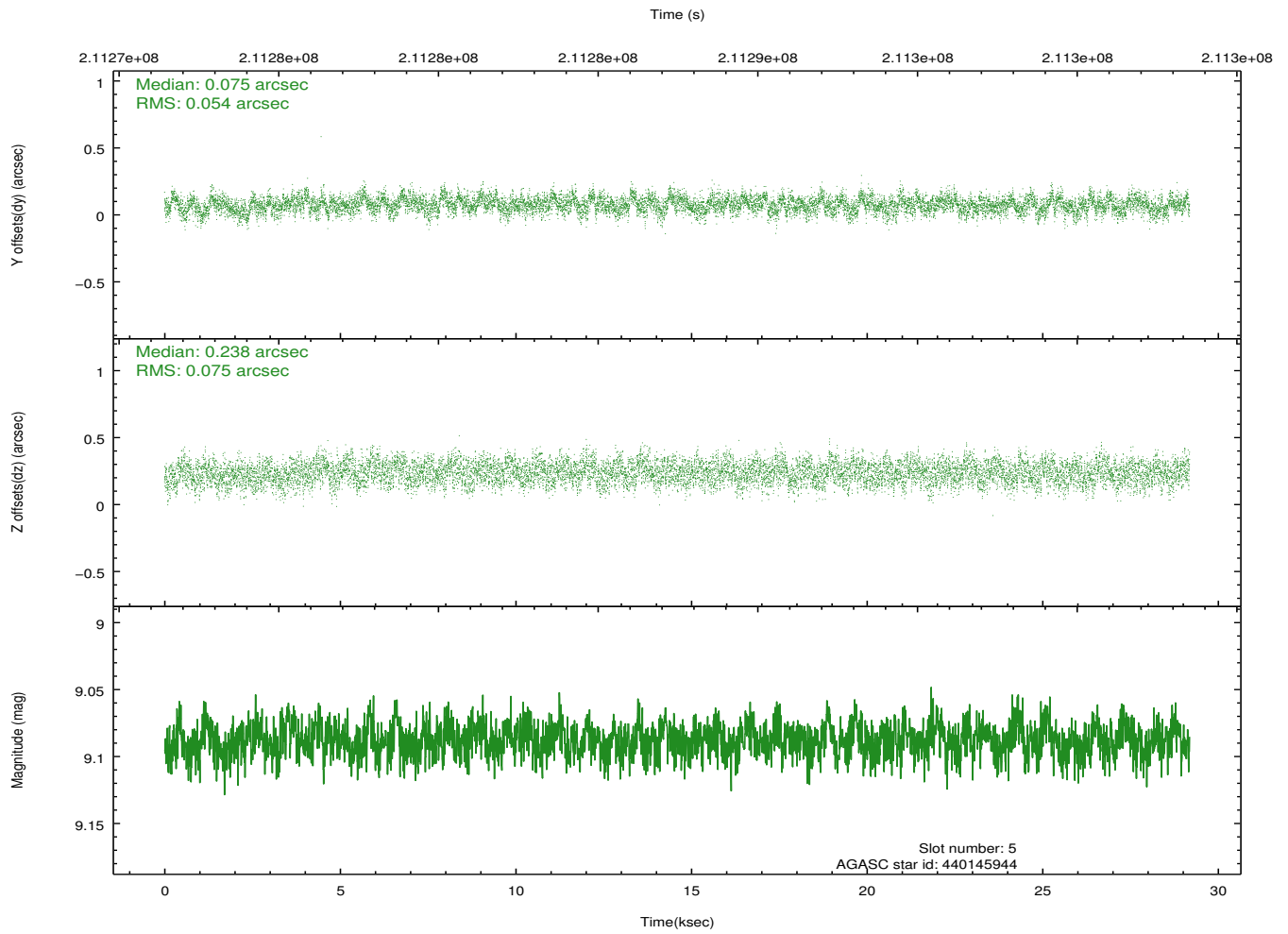
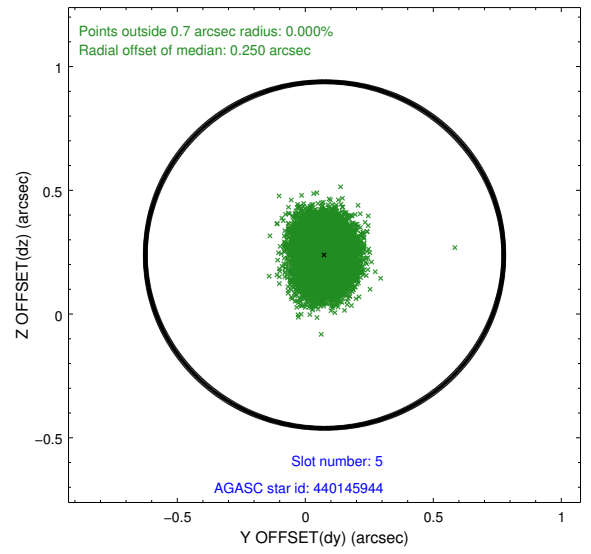
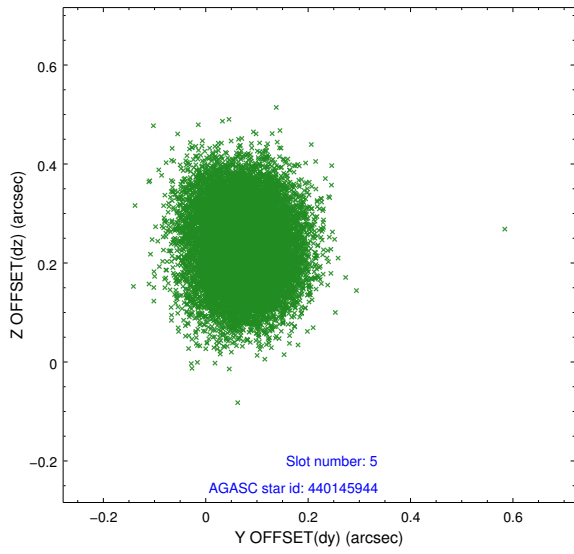
2.4.1 Slot 3



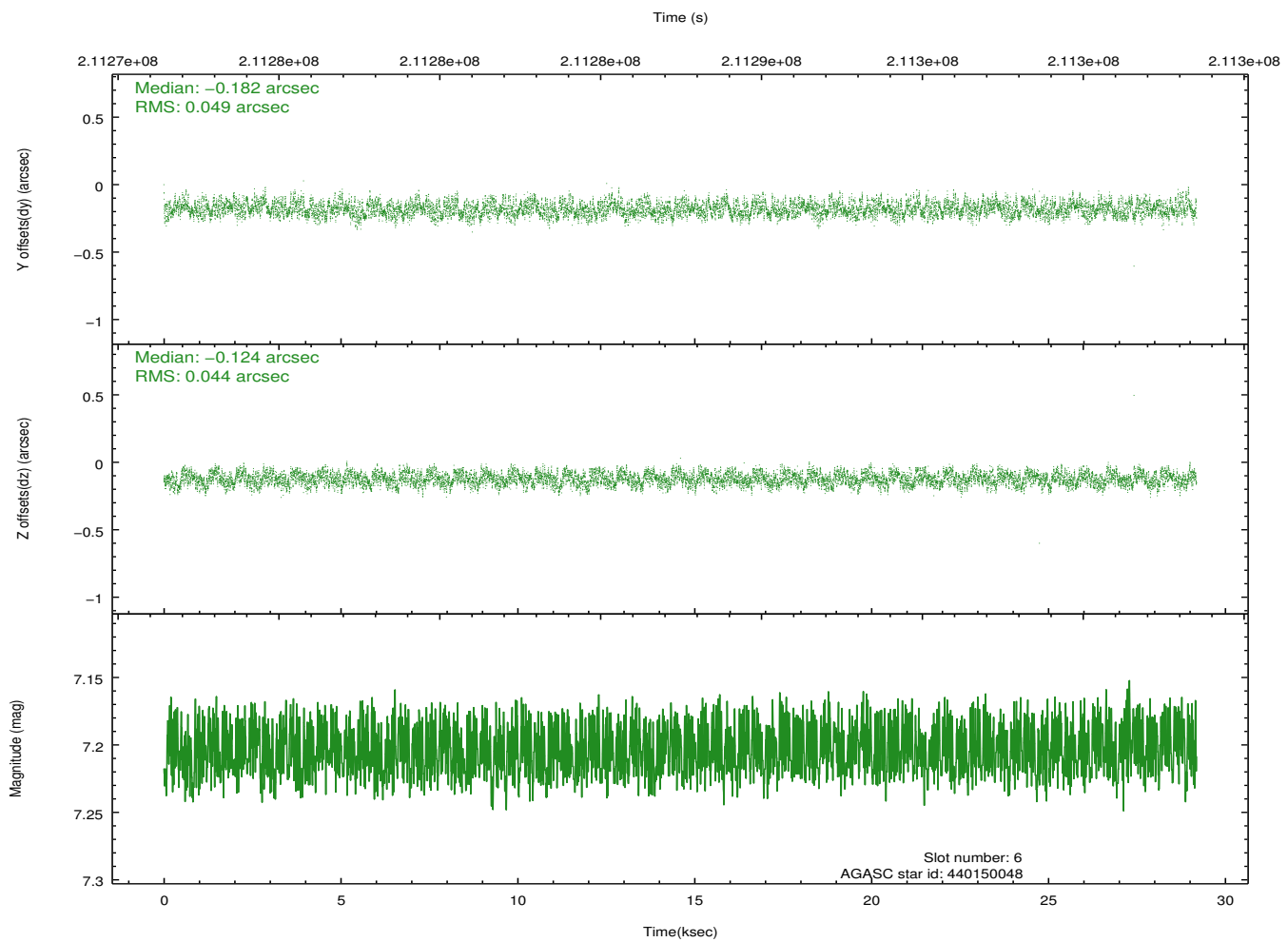
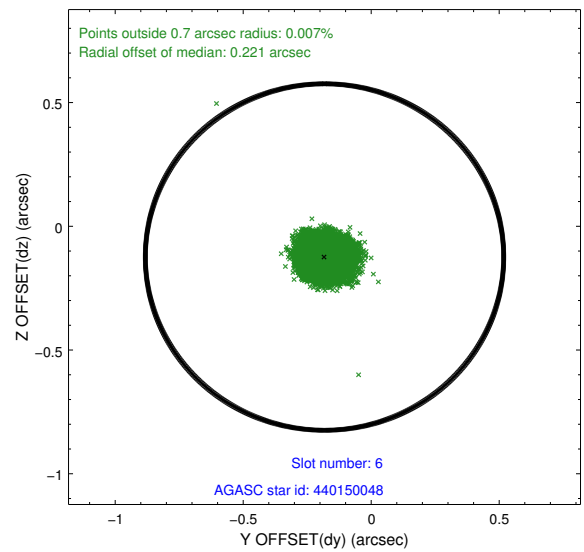
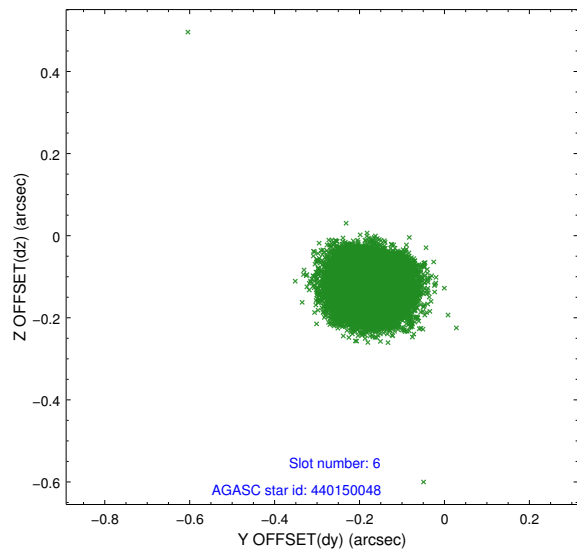
2.4.2 Slot 4



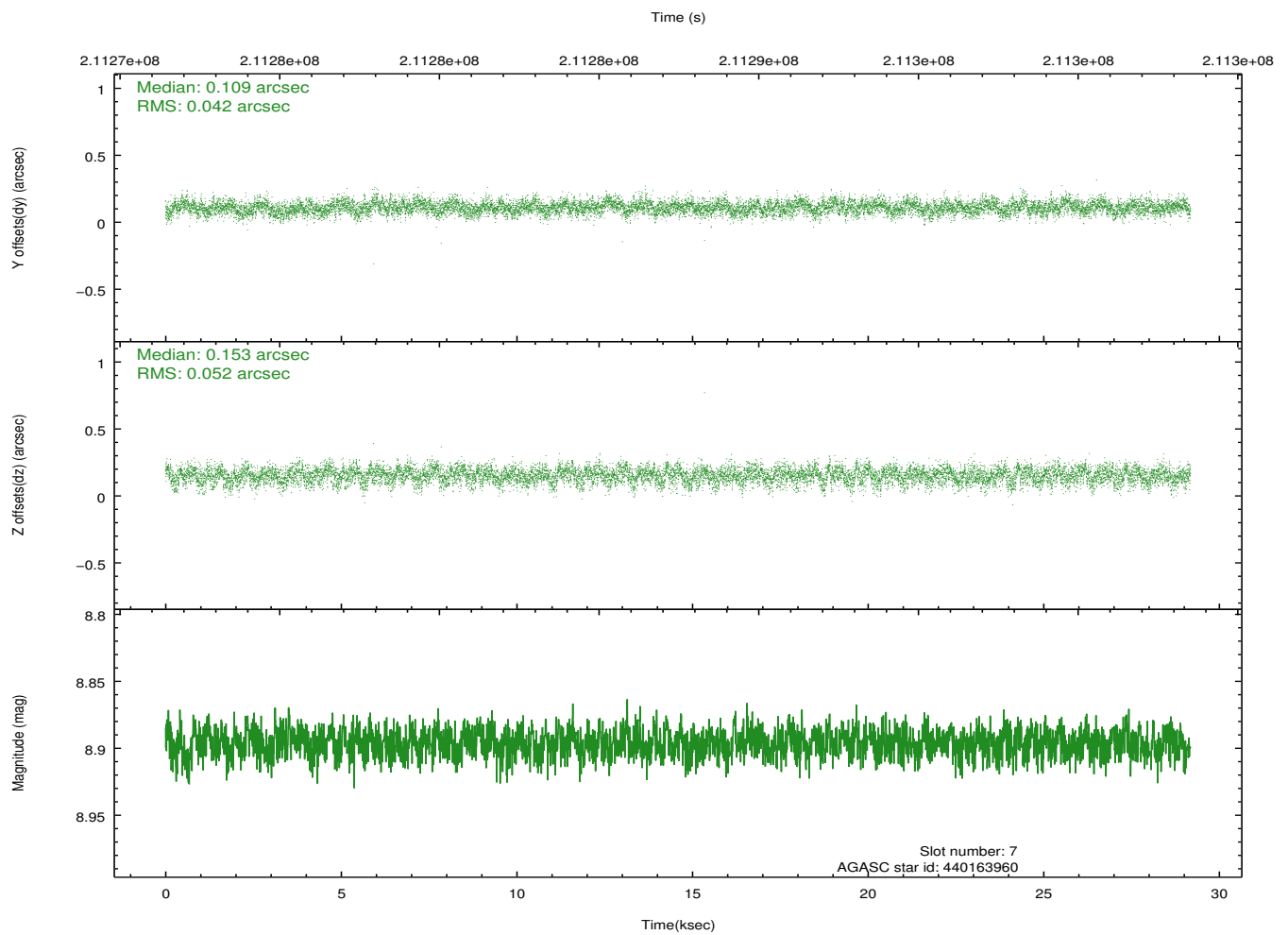
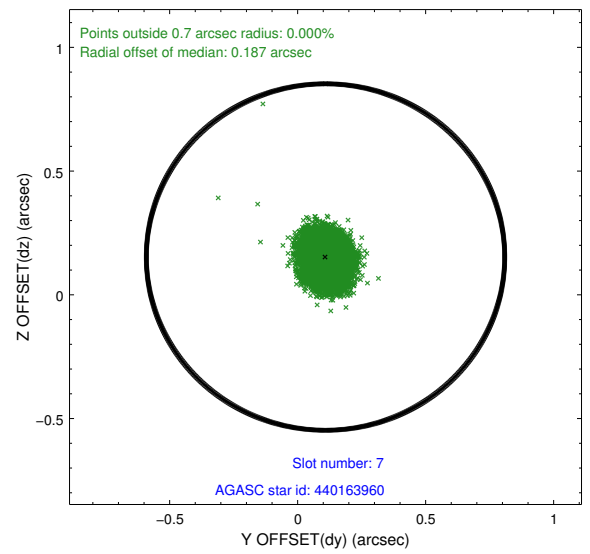
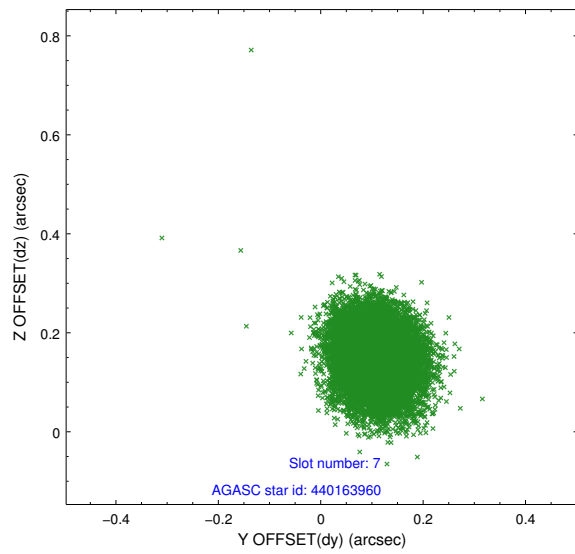
2.4.3 Slot 5



2.4.4 Slot 6

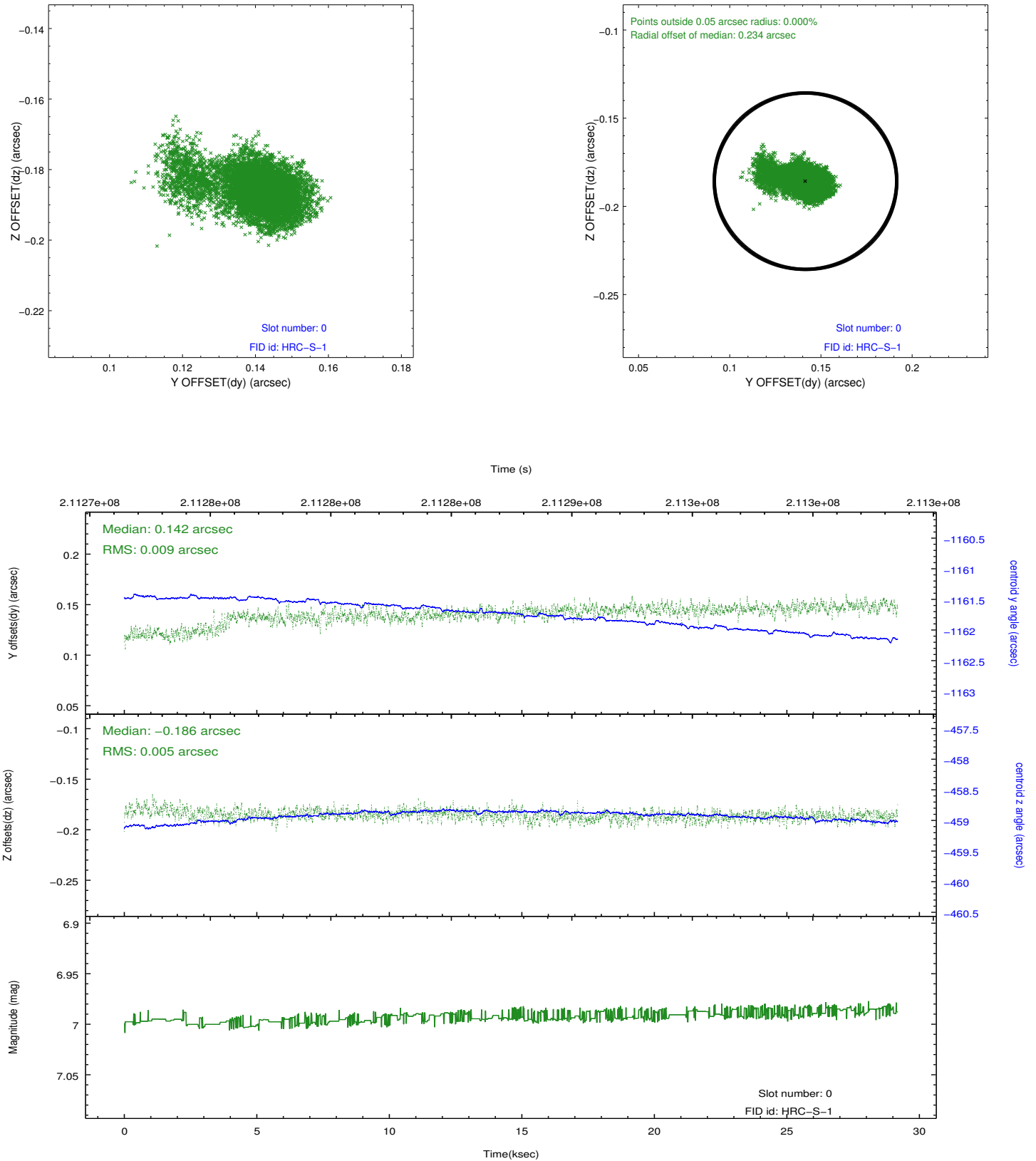


2.4.5 Slot 7

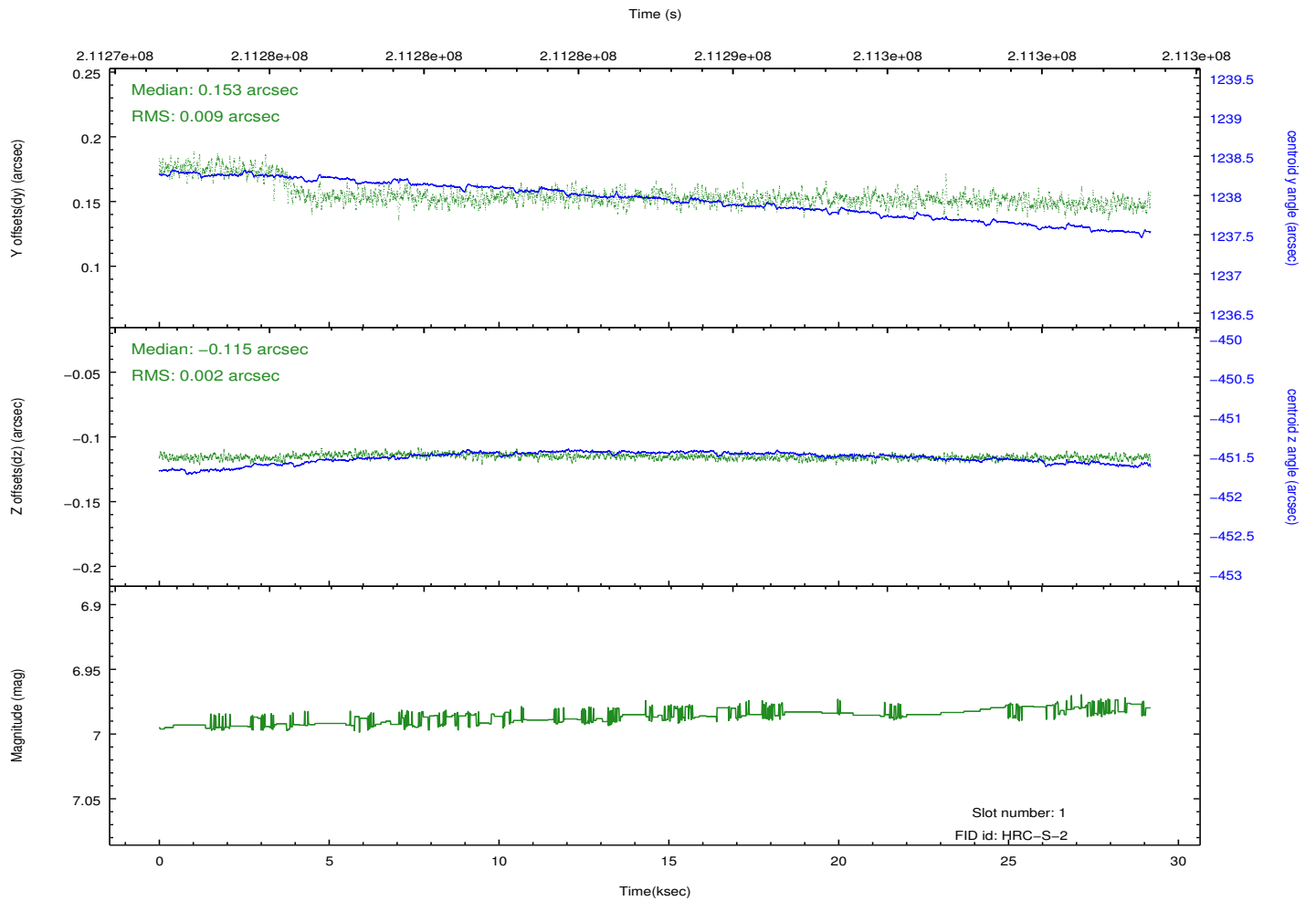
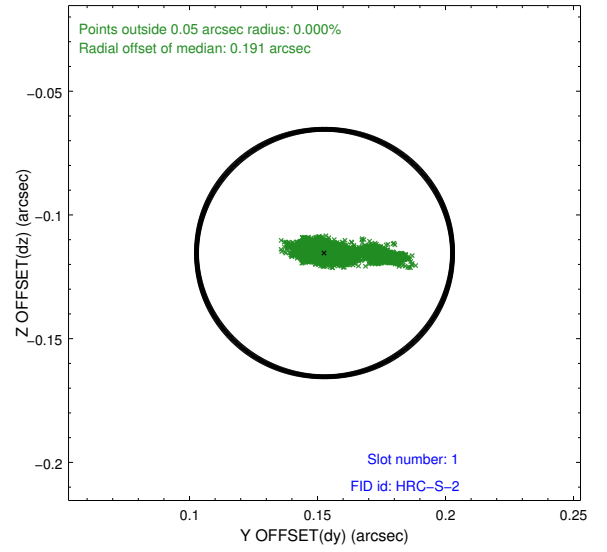
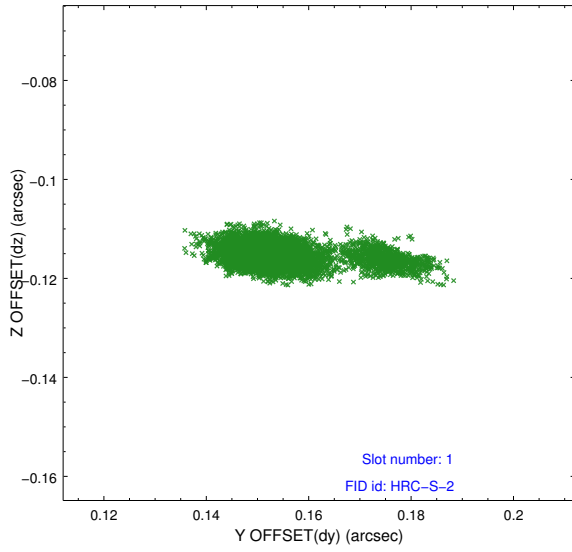


2.5 FID Slots

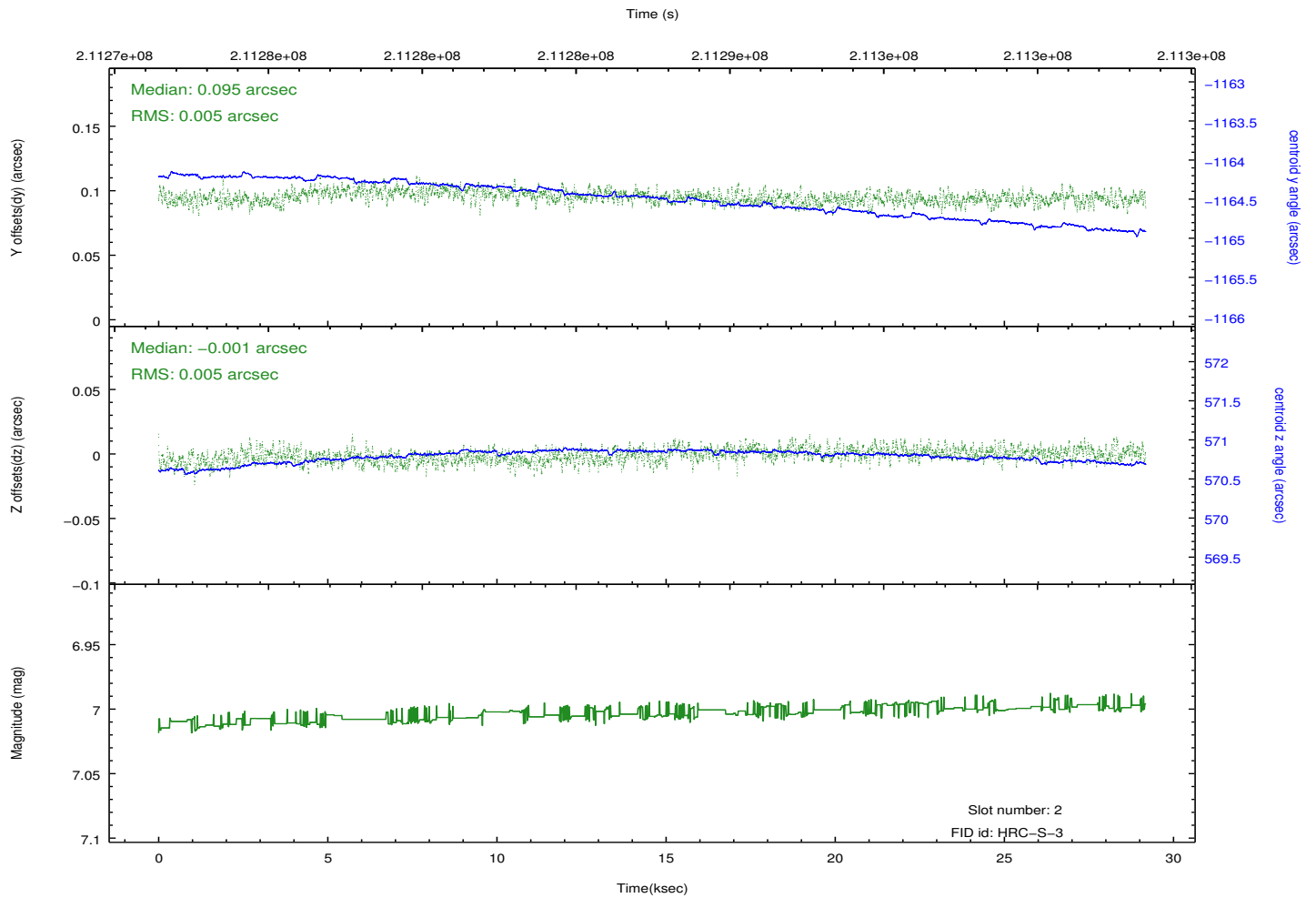
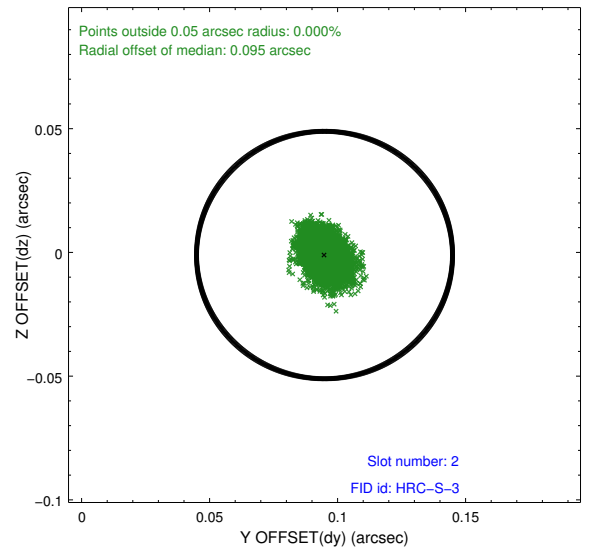
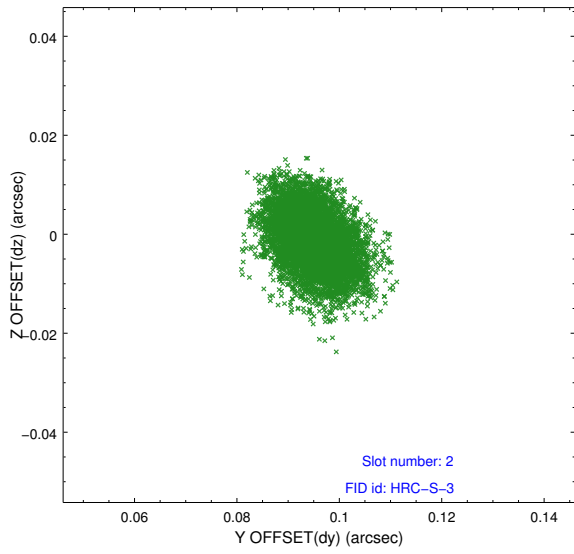
2.5.1 Slot 0



2.5.2 Slot 1

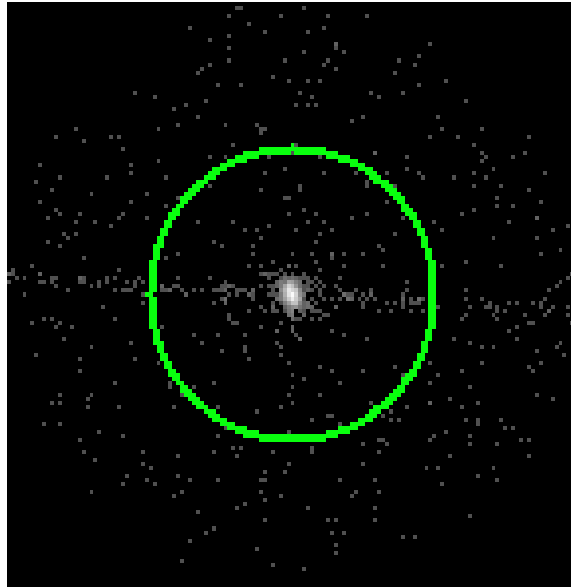


2.5.3 Slot 2

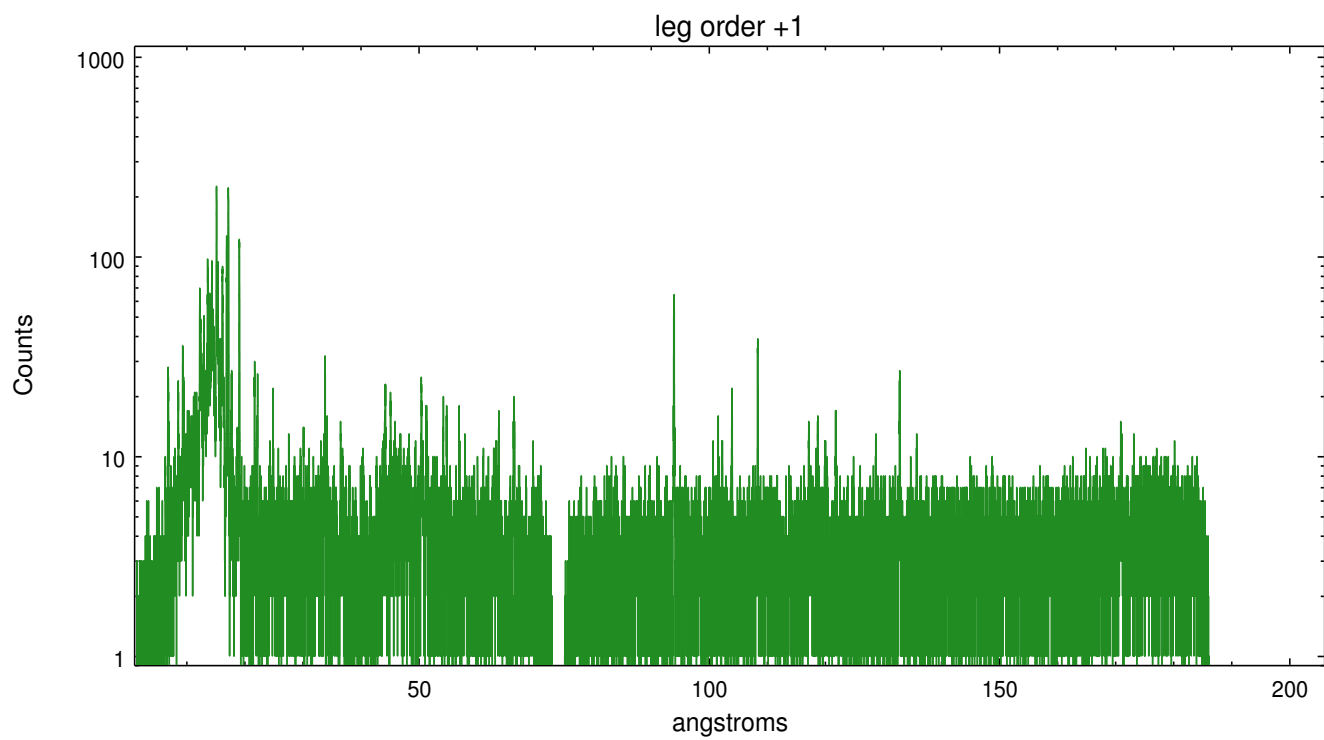
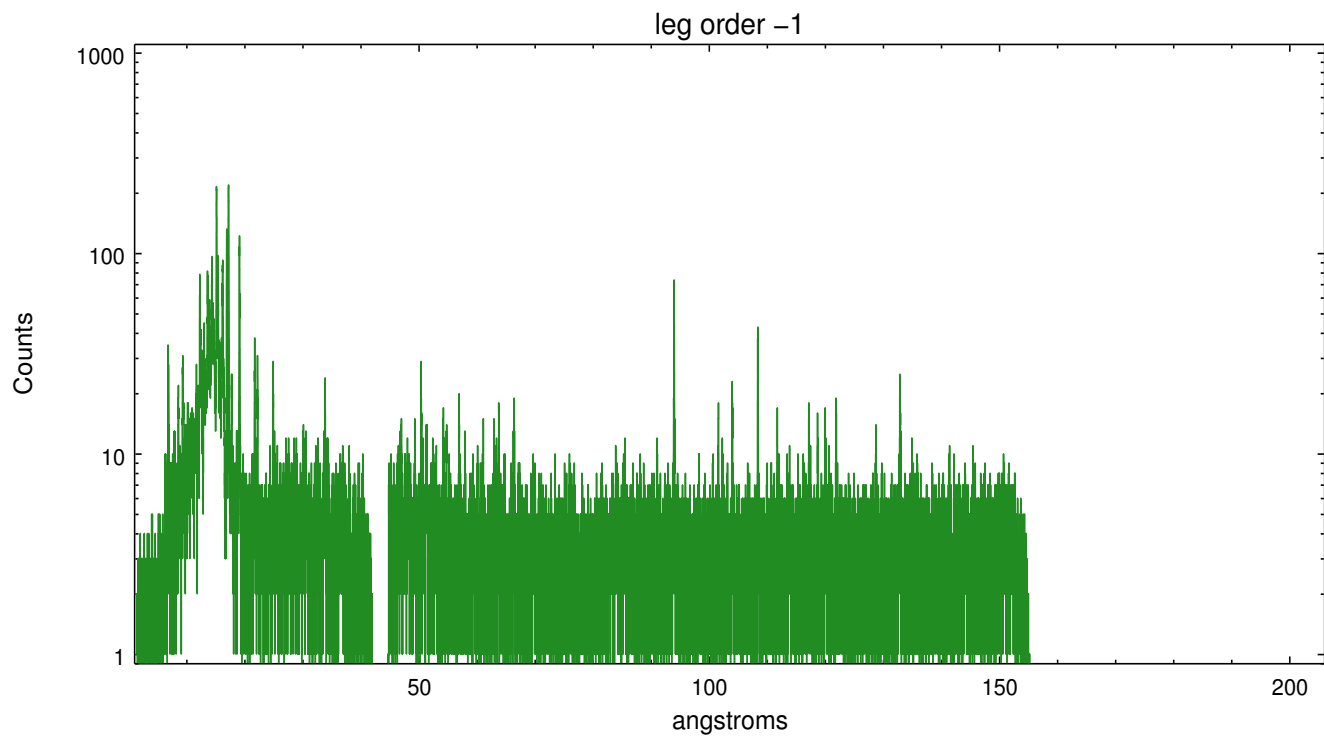


3 Gratings

3.1 LETG Arm



LETG Zero Order



A Summary

A.1 Status

V&V Scientist	Joy Nichols
V&V Date (YYYY-MM-DD)	2013.01.16
V&V Edition	1
V&V Disposition and Status	OK
V&V Charge Time	28.884

A.2 Comments

Shift of 3.0 arcmin to place strong lines in vicinity of tap 112 for degap refinement. Serendipitous emission is present for 2MASX J05163616+4625040. Target off-axis for calibration purposes. PSF is extended and asymmetric at this off-axis position. Zeroth order position was determined by the in the pipeline by the software tool `tgdetect`; this position is near the center of the PSF but not near the brightest position of the source. Dispersed spectrum is broadened.