

V&V Reference Report

L2 ASCDS Version : 8.4.5

Observation 5241 - L2 Version 3
Chandra X-Ray Center

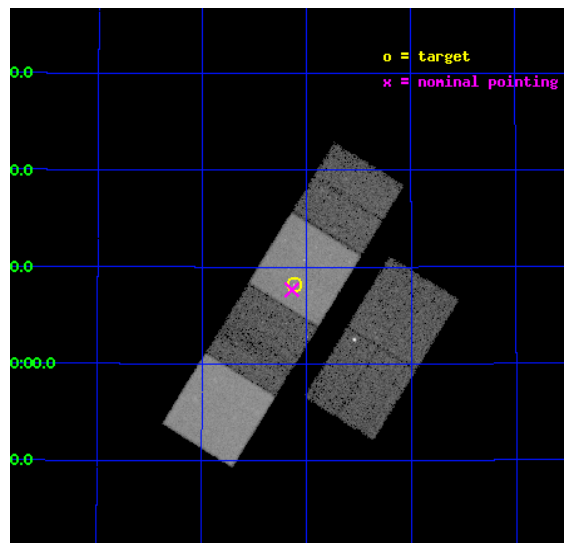
L2 Processing Date : Nov 5 2012

Contents

1	Front	2
2	OBI	3
2.1	OBI	3
2.1.1	Images	3
2.1.2	Bias	3
2.1.3	Parameters	4
2.1.4	Events	4
2.2	Compared Parameters	5
2.3	Aspect	6
2.4	Star Slots	9
2.4.1	Slot 3	9
2.4.2	Slot 4	10
2.4.3	Slot 5	11
2.4.4	Slot 6	12
2.4.5	Slot 7	13
2.5	FID Slots	14
2.5.1	Slot 0	14
2.5.2	Slot 1	15
2.5.3	Slot 2	16
A	Summary	17
A.1	Status	17
A.2	Comments	17

1 Front

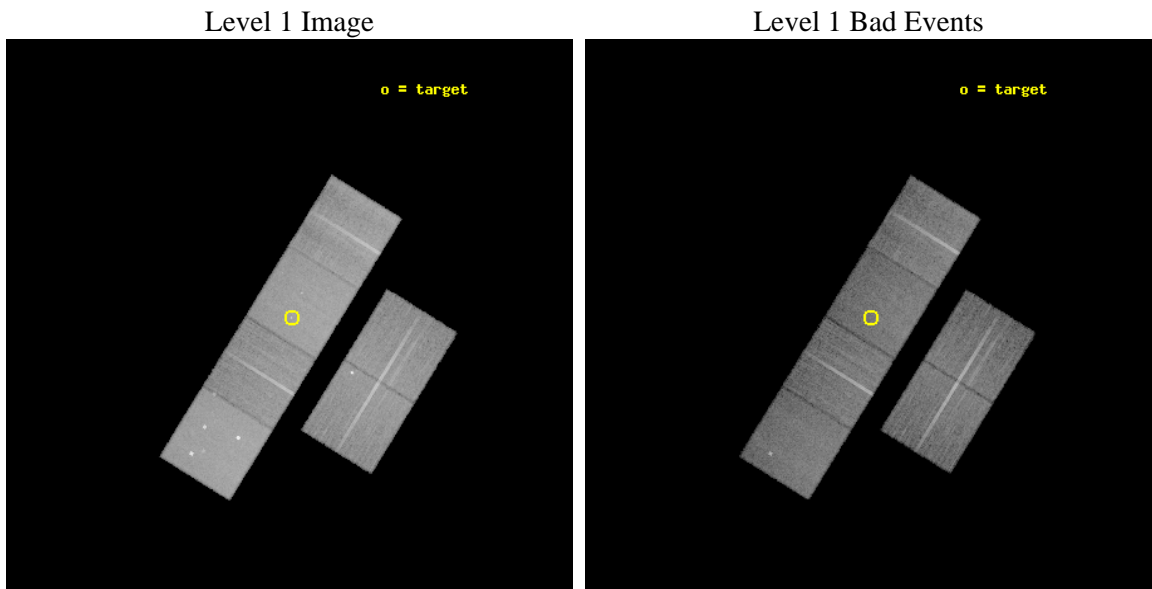
seq_num	300103	Sequence number
obs_id	5241	Observation id
title	A UNIFORM STUDY OF GLOBULAR CLUSTER X-RAY SOURCES: THE KEY TO CLUSTER DYNAMICAL EVOLUTION	Proposal title
observer	Prof. Walter Lewin	Principal investigator
object	NGC 6341	Source name
dtcycle	0	
cycle	P	events from which exps? Prim/Second/Both
ra_targ	259.280417	Observer's specified target RA [deg]
dec_targ	43.136528	Observer's specified target Dec [deg]
ra_nom	259.28530614029	Nominal RA [deg]
dec_nom	43.127523321198	Nominal Dec [deg]
roll_nom	301.70415432008	Nominal Roll [deg]
revision	3	Processing version of data
ontime	23219.199913502	Sum of GTIs [s]
livetime	22925.184423273	Livetime [s]
ontime2	23219.199913502	Sum of GTIs [s]
ontime3	23219.199913502	Sum of GTIs [s]
ontime5	23219.199913502	Sum of GTIs [s]
ontime6	23219.199913502	Sum of GTIs [s]
ontime7	23219.199913502	Sum of GTIs [s]
ontime8	23219.199913502	Sum of GTIs [s]
l2events	245158	Number of level 2 events



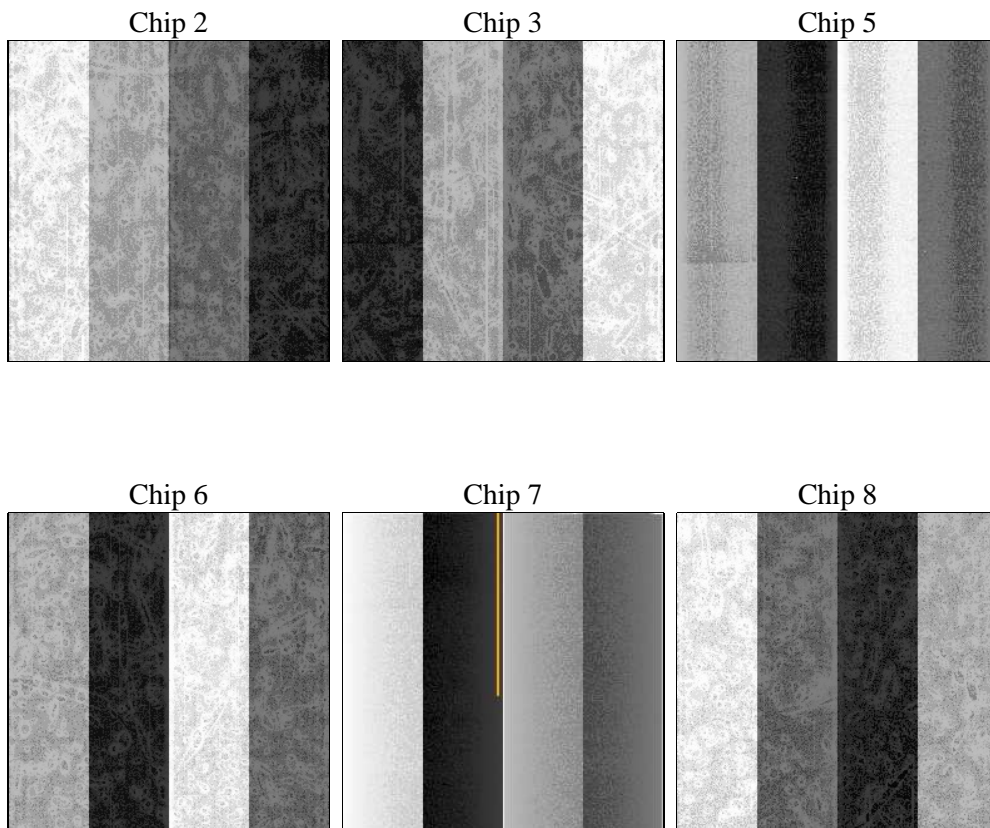
2 OBI

2.1 OBI

2.1.1 Images



2.1.2 Bias



2.1.3 Parameters

obi_num	0	Obi number	sched_exp_time	23107.000000	[s] Scheduled observation exposure time
ascdsver	8.4.5	Processing system revision	ontime	23219.199913502	Sum of GTIs [s]
caldbver	4.5.2	 	ontime2	23219.199913502	Sum of GTIs [s]
date	2012-11-05T20:03:09	Date and time of file creation	ontime3	23219.199913502	Sum of GTIs [s]
revision	3	Processing version of data	ontime5	23219.199913502	Sum of GTIs [s]
			ontime6	23219.199913502	Sum of GTIs [s]
			ontime7	23219.199913502	Sum of GTIs [s]
			ontime8	23219.199913502	Sum of GTIs [s]
			l1events	1074319	Number of level 1 events

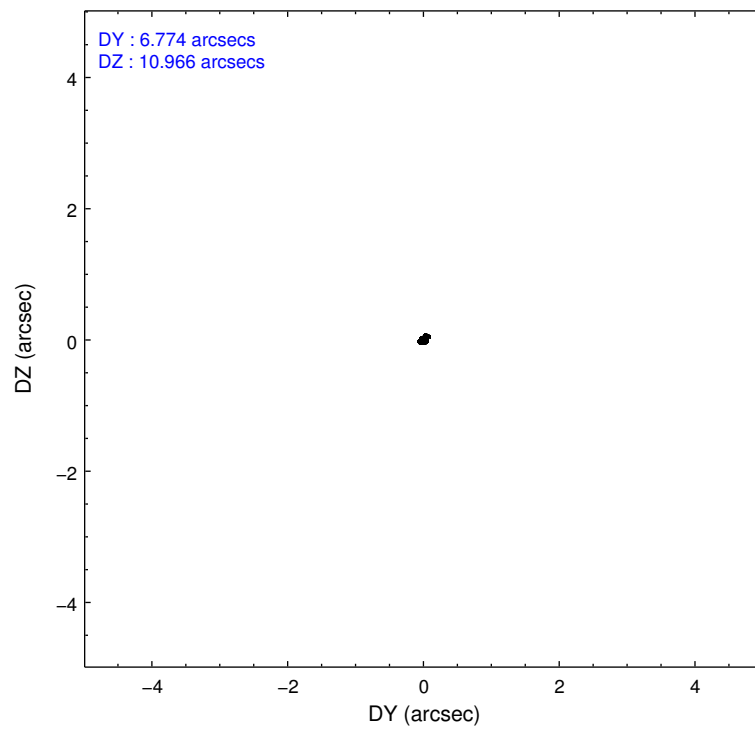
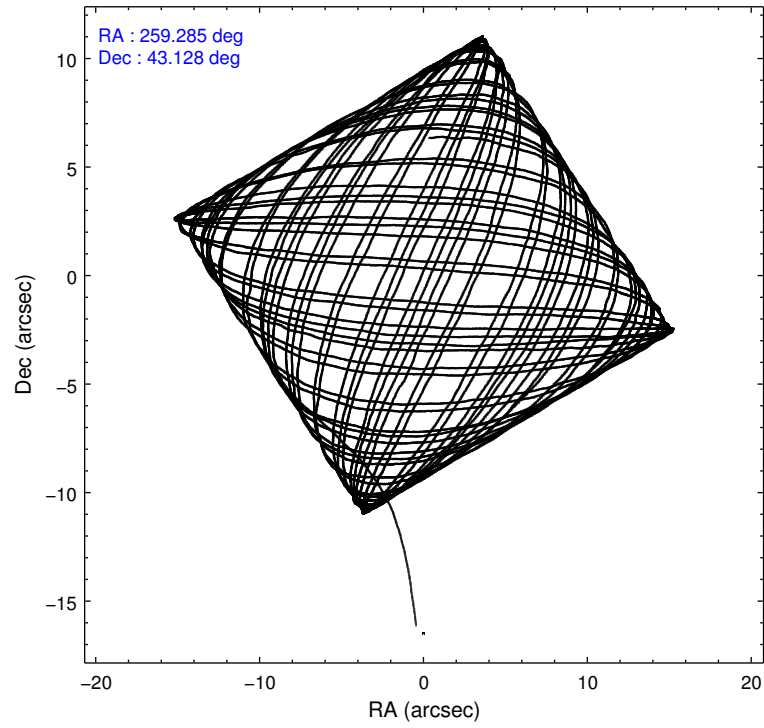
2.1.4 Events

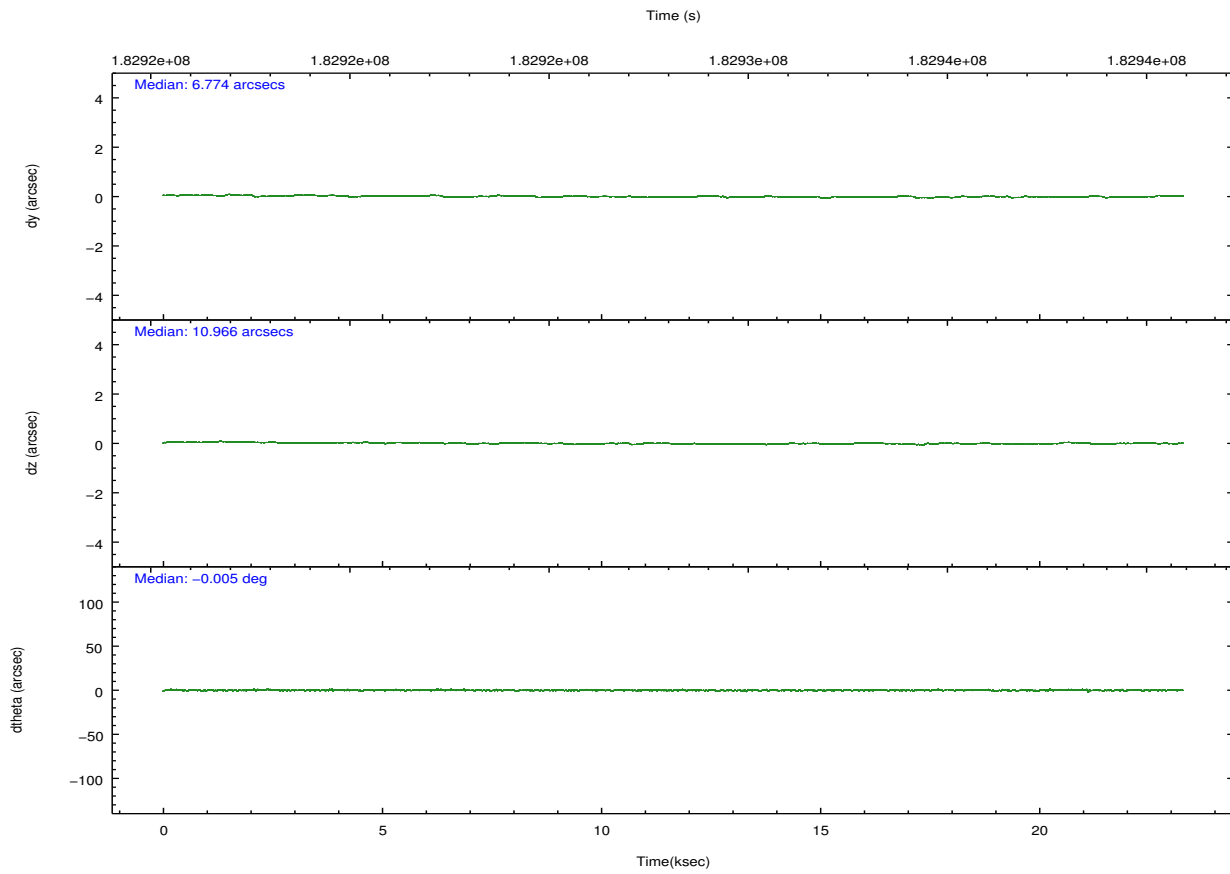
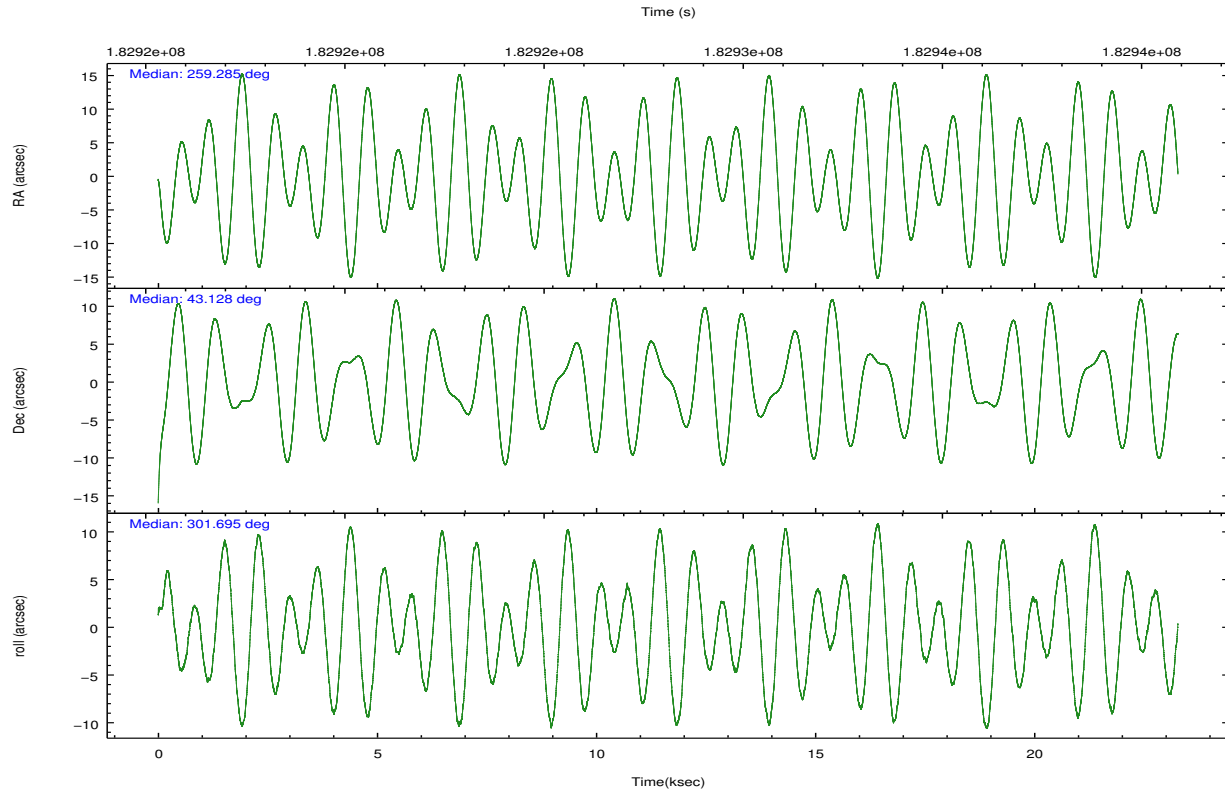
	ccd 2	ccd 3	ccd 5	ccd 6	ccd 7	ccd 8		ccd 2	ccd 3	ccd 5	ccd 6	ccd 7	ccd 8
level 1 events	156071	145428	231740	149787	203798	187495	grade 0 events	10574	7545	15328	6986	7986	12711
rejected events	135090	128083	123228	132262	118939	147844		6%	5%	6%	4%	3%	6%
rejected %	86%	88%	53%	88%	58%	78%	grade 1 events	101	79	266	51	178	129
								0%	0%	0%	0%	0%	0%
							grade 2 events	3841	3309	31326	3550	16603	8402
								2%	2%	13%	2%	8%	4%
							grade 3 events	1812	1773	4217	1800	7577	4380
								1%	1%	1%	1%	3%	2%
							grade 4 events	1743	1661	4048	1644	7454	4014
								1%	1%	1%	1%	3%	2%
							grade 5 events	6032	6570	16877	6740	19286	8729
								3%	4%	7%	4%	9%	4%
							grade 6 events	3014	3060	53626	3550	45259	10150
								1%	2%	23%	2%	22%	5%
							grade 7 events	128954	121431	106052	125466	99455	138980
								82%	83%	45%	83%	48%	74%

2.2 Compared Parameters

Parameter	Planned	Actual	Parameter	Planned	Actual
Instrument	ACIS	ACIS	Obspar format version number	7	7
Detector	ACIS-235678	ACIS-235678	Obspar file type	PREDICTED	ACTUAL
Grating	NONE	NONE	Obspar update status	NONE	UPDATED
Data mode	FAINT	FAINT	Number of optional ACIS chips dropped	0	0
Observation mode	POINTING	POINTING	On-chip summing requested	N	N
[deg] Pointing RA	259.252199	259.2853061402881	Subarray requested	NONE	NONE
[deg] Pointing Dec	43.140112	43.12752332119825	Alternating exposures requested	N	N
[deg] Pointing Roll	301.570161	301.7041543200805	[s] Primary exposure time	0.000000	3.2
[mm] SIM focus pos	-0.684267	-0.6828225247311905			
[mm] SIM defocus	0	0.001444936568705701			
[mm] SIM translation stage pos	-190.132523	-190.1425803651734			
[mm] SIM translation stage offset	0	0.01005778216563158			
[s] Observation start time (MET)	182916642.184000	182915603.89627			
Observation start date	2003-10-19T02:09:38	2003-10-19T01:53:23			
[s] Observation end time (MET)	182939749.184000	182940459.12234			
Observation end date	2003-10-19T08:34:45	2003-10-19T08:47:39			
Read mode	TIMED	TIMED			

2.3 Aspect



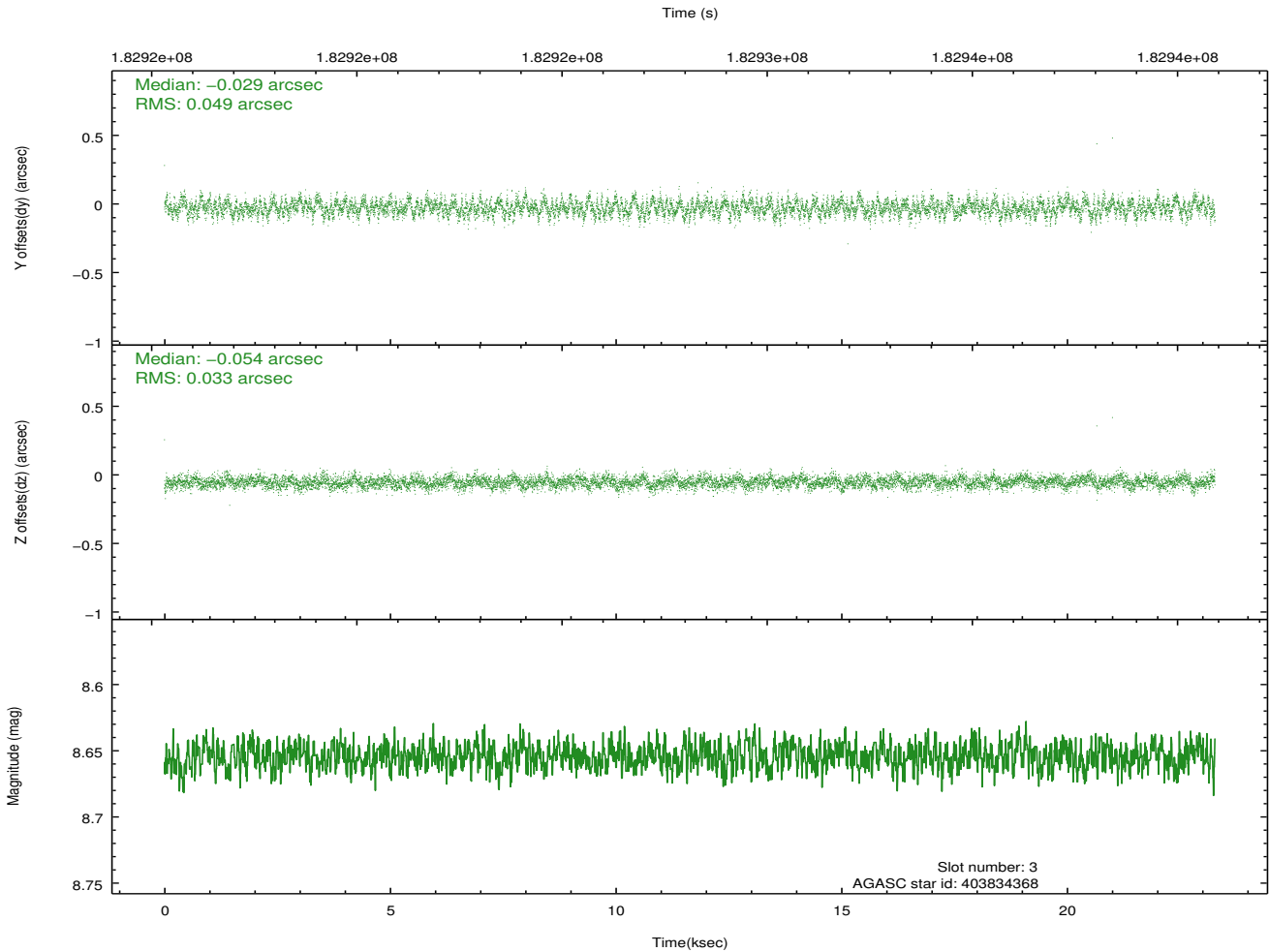
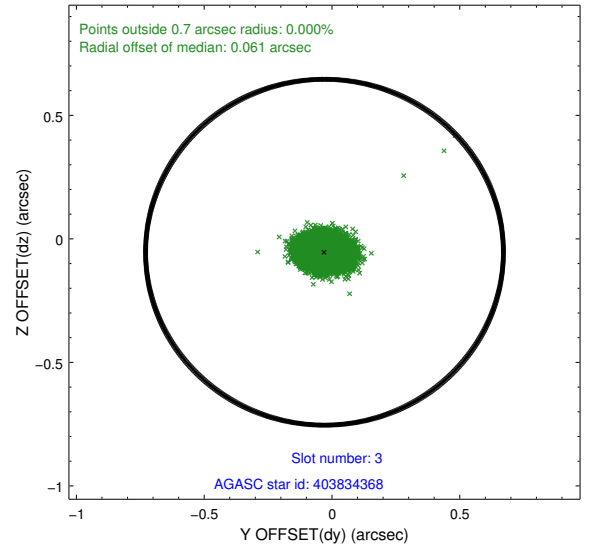
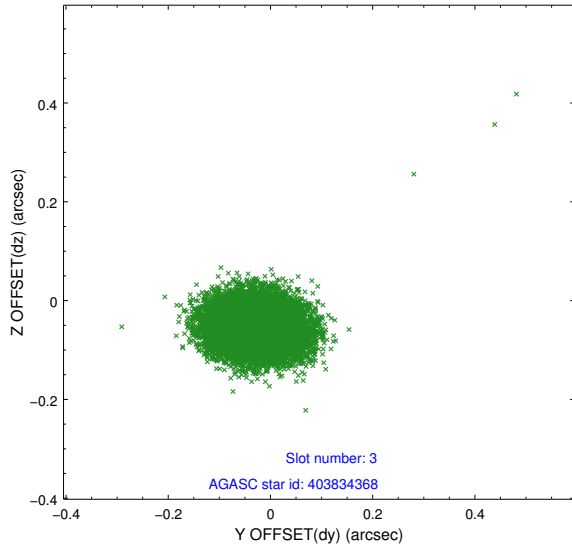


Slot Statistics

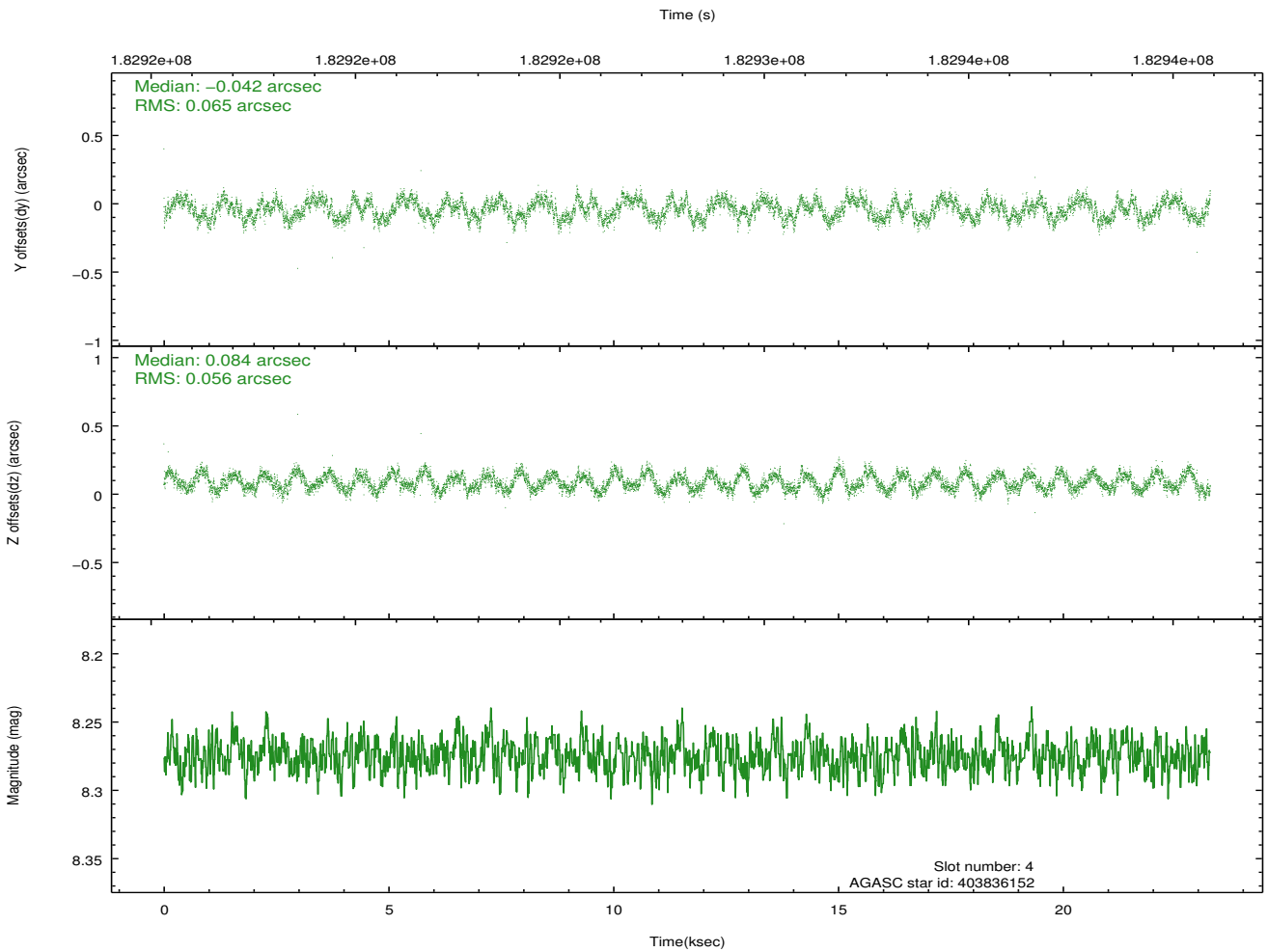
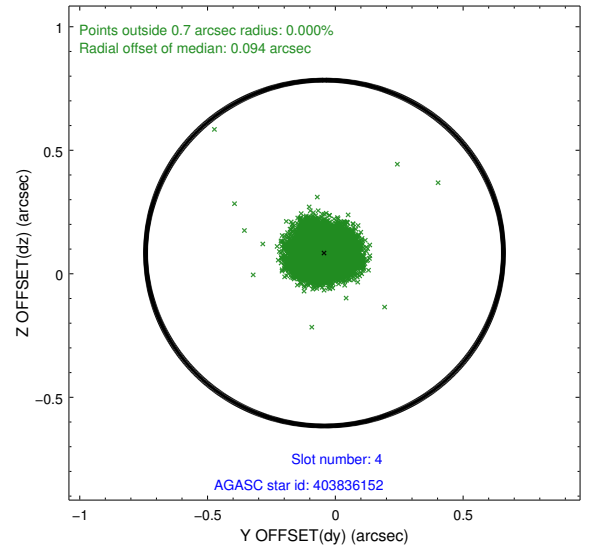
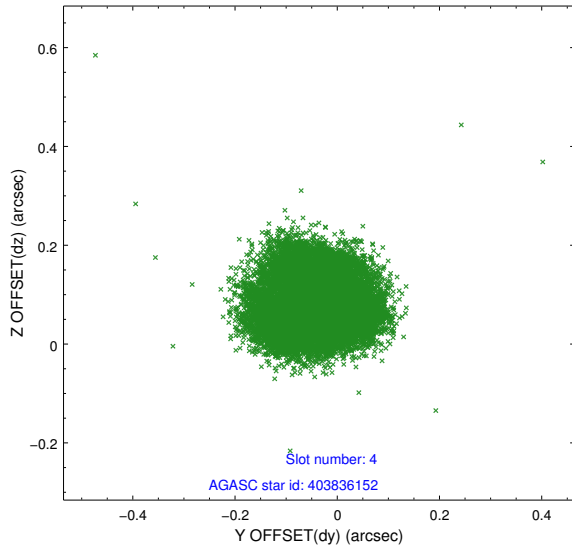
slot	status	id	mag	n_pts	med_dy	med_dz	dr1	dr2	ra	dec	mean_y	mean_z
0	FID	ACIS-S-1	7.18	5676	0.031	-0.072	0.007	0.012	0.000000	0.000000	936.53	-1727.90
1	FID	ACIS-S-5	7.23	5678	-0.039	0.020	0.006	0.011	0.000000	0.000000	-1812.44	169.63
2	FID	ACIS-S-6	7.34	5677	-0.013	0.064	0.007	0.012	0.000000	0.000000	401.91	813.77
3	GUIDE	403834368	8.65	11346	-0.029	-0.054	0.062	0.100	259.778485	42.643335	2249.97	253.79
4	GUIDE	403836152	8.27	11353	-0.042	0.084	0.094	0.134	259.353083	42.479308	2167.83	-1016.65
5	GUIDE	404362392	6.63	11355	-0.042	0.003	0.043	0.070	259.672399	43.609161	-867.37	1818.46
6	GUIDE	404365112	8.47	11352	0.001	0.108	0.060	0.097	259.601582	43.325231	-90.26	1129.70
7	GUIDE	403839112	8.83	11349	0.116	-0.147	0.099	0.162	259.018308	42.268024	2348.84	-2173.79

2.4 Star Slots

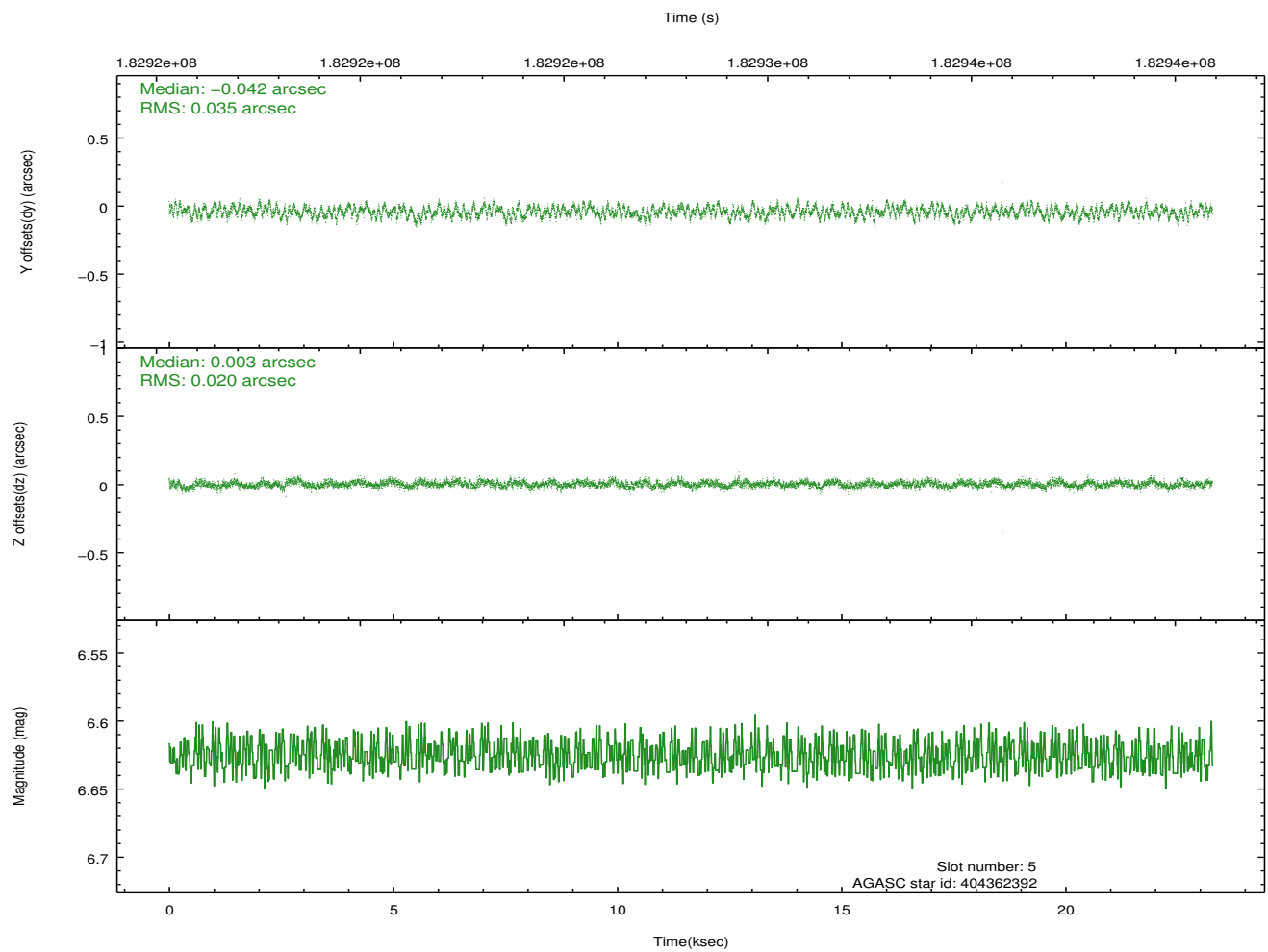
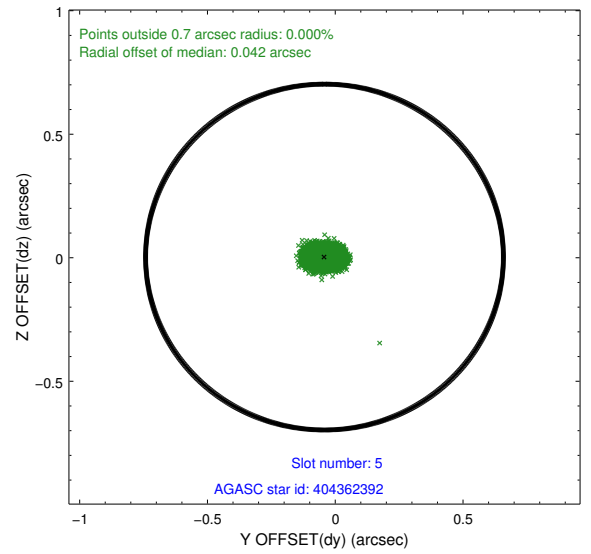
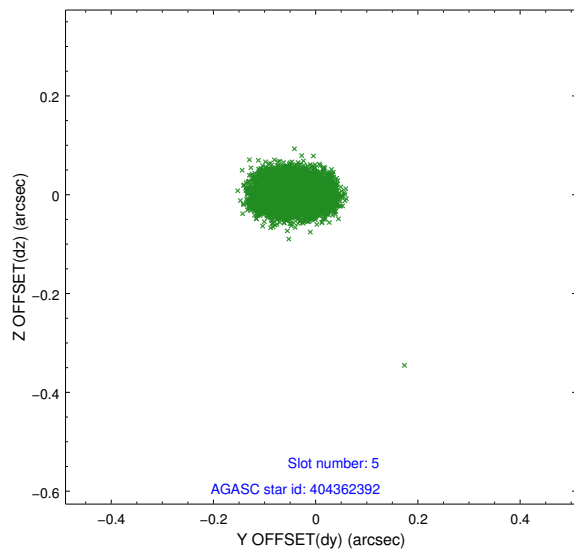
2.4.1 Slot 3



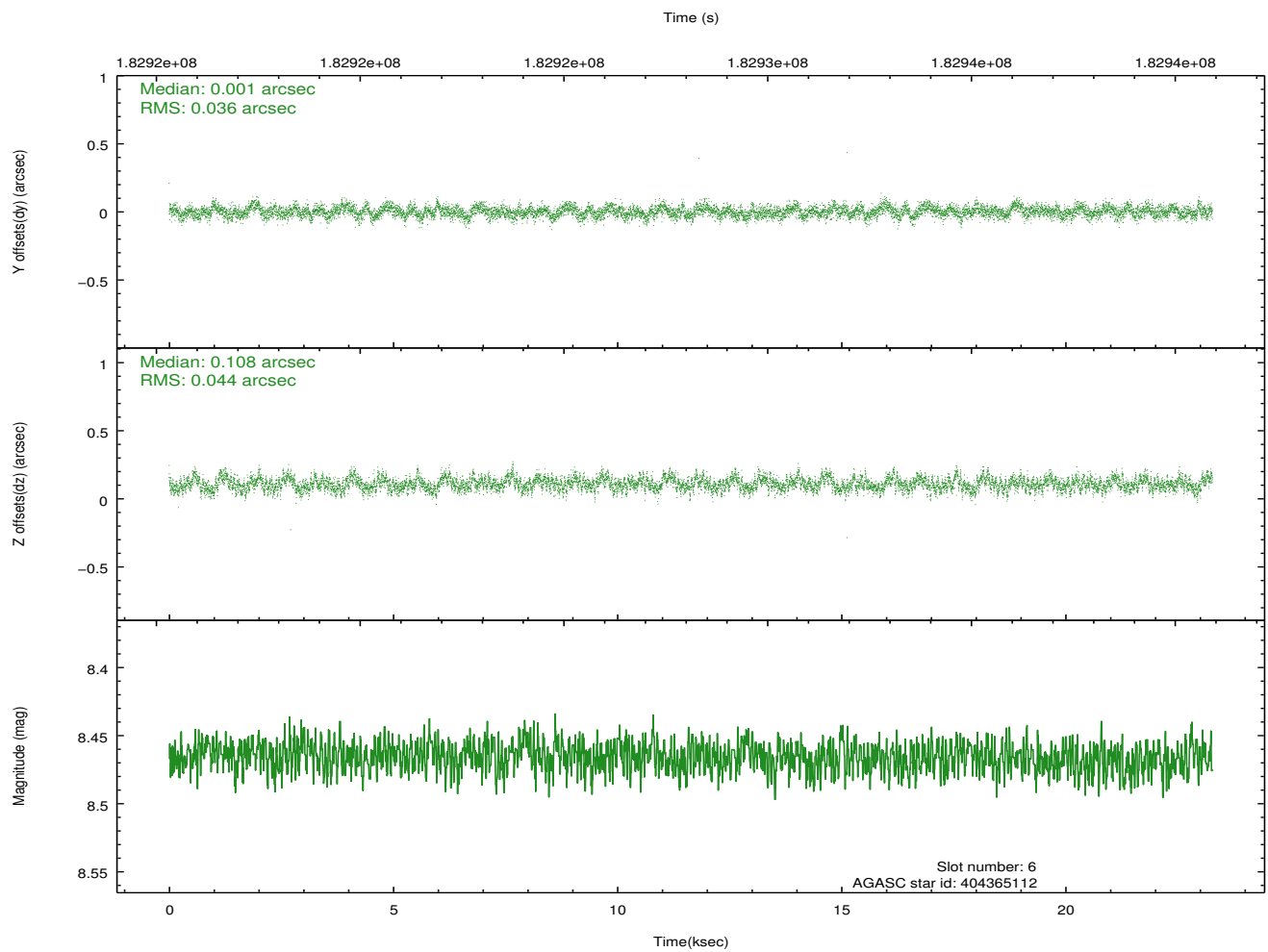
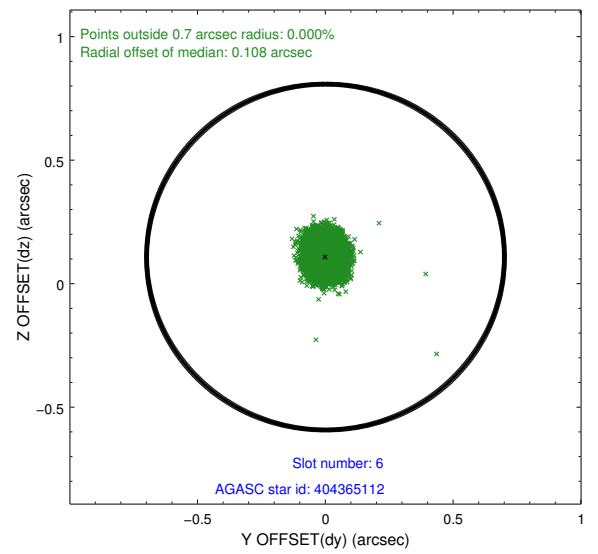
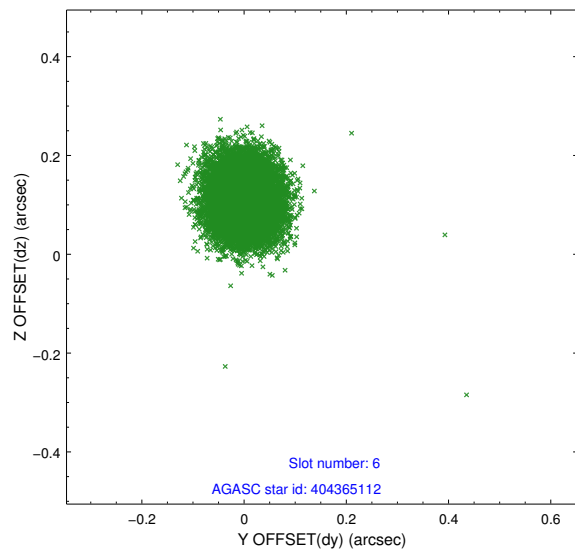
2.4.2 Slot 4



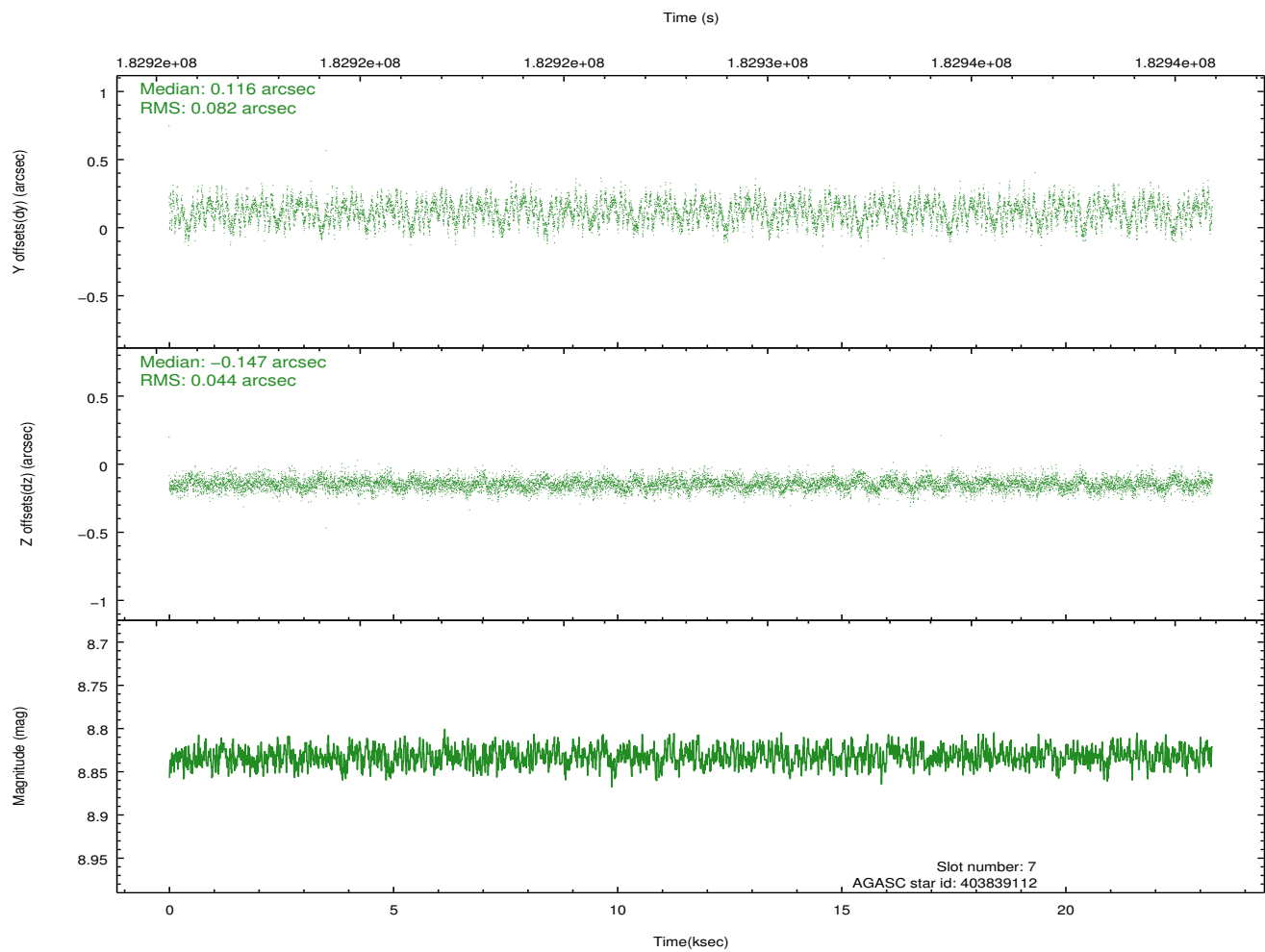
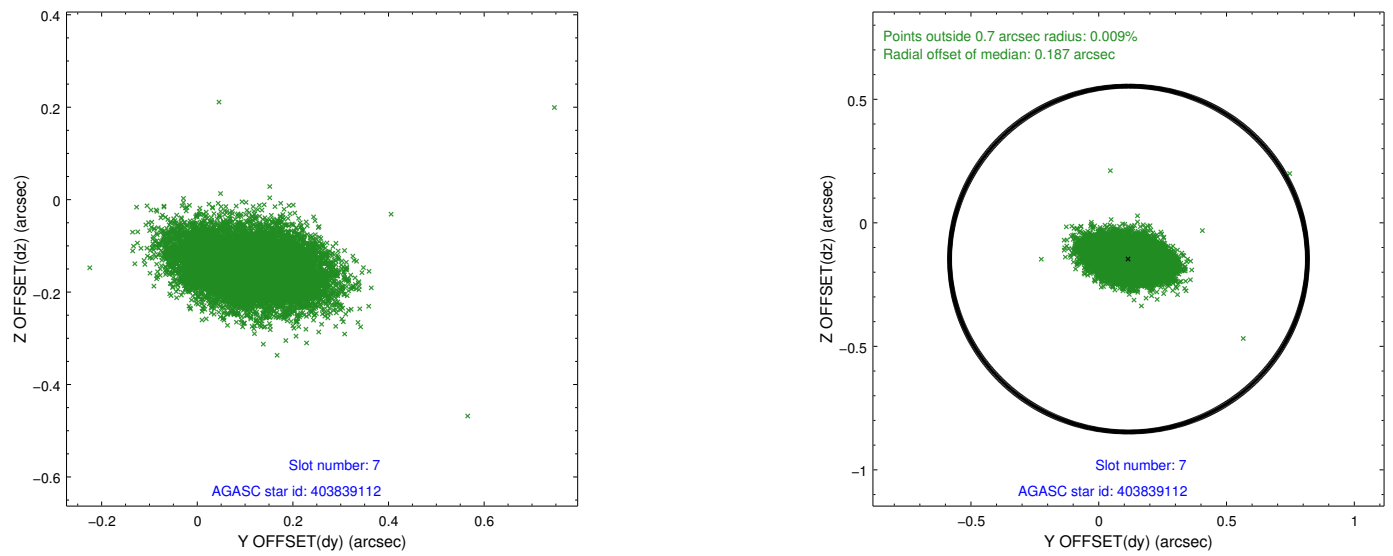
2.4.3 Slot 5



2.4.4 Slot 6

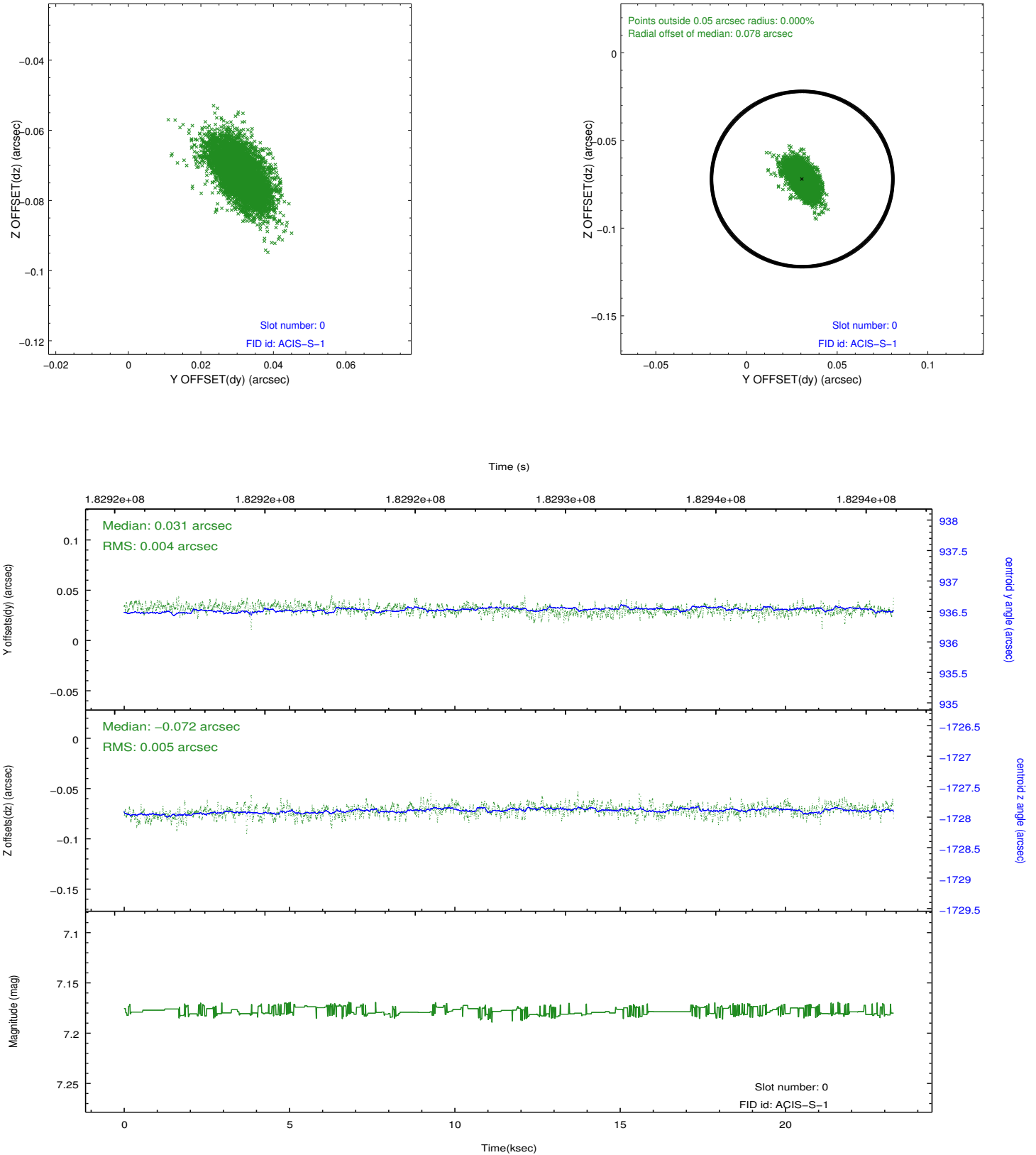


2.4.5 Slot 7

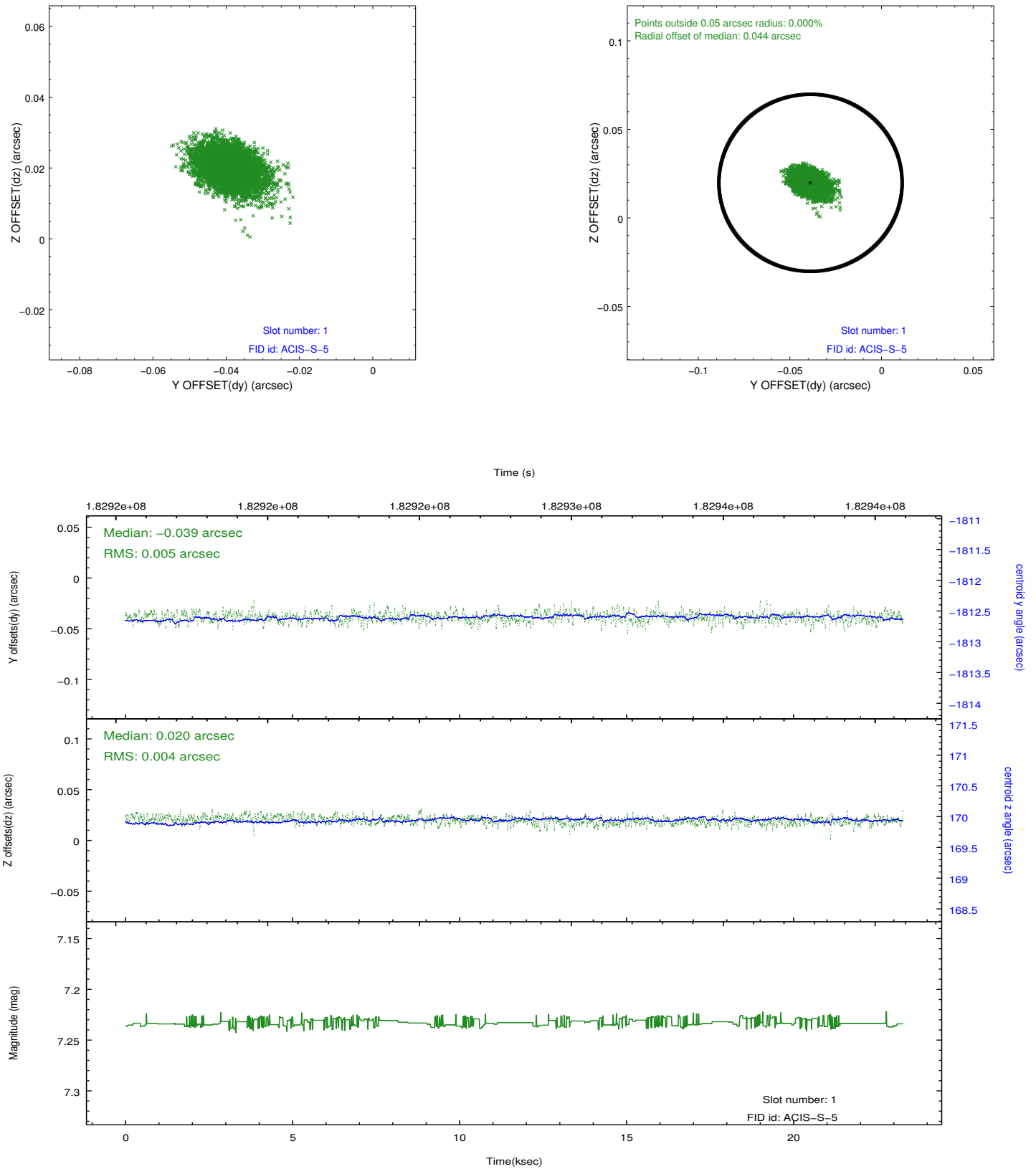


2.5 FID Slots

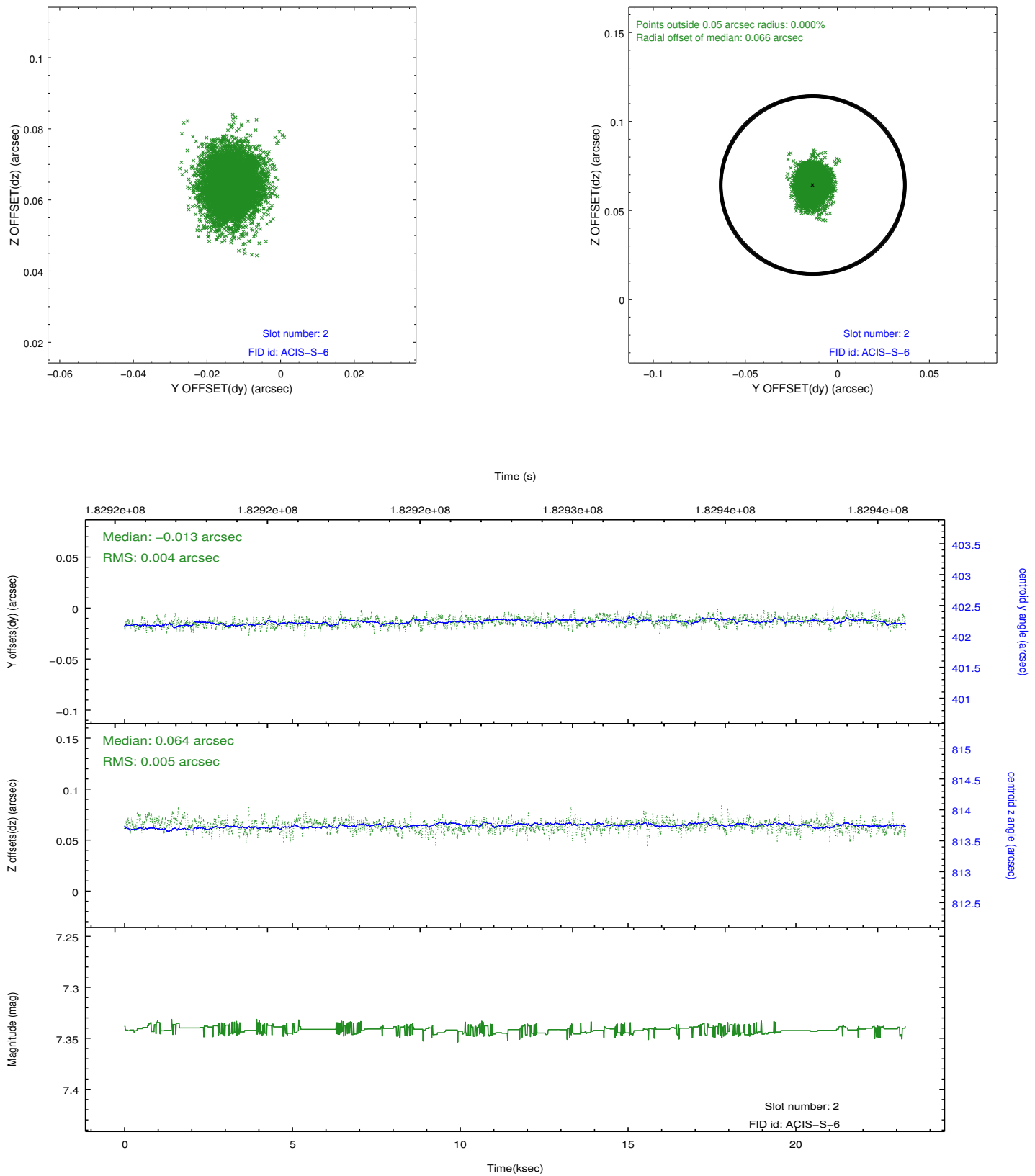
2.5.1 Slot 0



2.5.2 Slot 1



2.5.3 Slot 2



A Summary

A.1 Status

V&V Scientist	Jen Lauer
V&V Date (YYYY-MM-DD)	2012.11.30
V&V Edition	1
V&V Disposition and Status	OK
V&V Charge Time	23.222

A.2 Comments