

V&V Reference Report

L2 ASCDS Version : 8.5

Observation 5361 - L2 Version 3
Chandra X-Ray Center

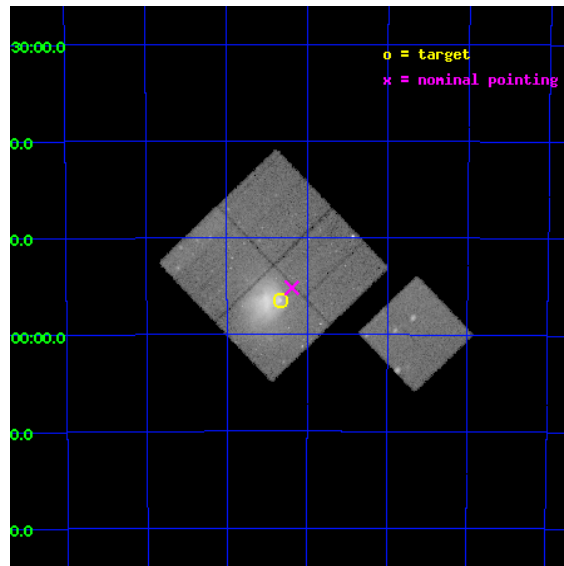
L2 Processing Date : Dec 7 2012

Contents

1	Front	2
2	OBI	3
2.1	OBI	3
2.1.1	Images	3
2.1.2	Bias	3
2.1.3	Parameters	4
2.1.4	Events	4
2.2	Compared Parameters	5
2.3	Aspect	6
2.4	Star Slots	9
2.4.1	Slot 3	9
2.4.2	Slot 4	10
2.4.3	Slot 5	11
2.4.4	Slot 6	12
2.4.5	Slot 7	13
2.5	FID Slots	14
2.5.1	Slot 0	14
2.5.2	Slot 1	15
2.5.3	Slot 2	16
A	Summary	17
A.1	Status	17
A.2	Comments	17

1 Front

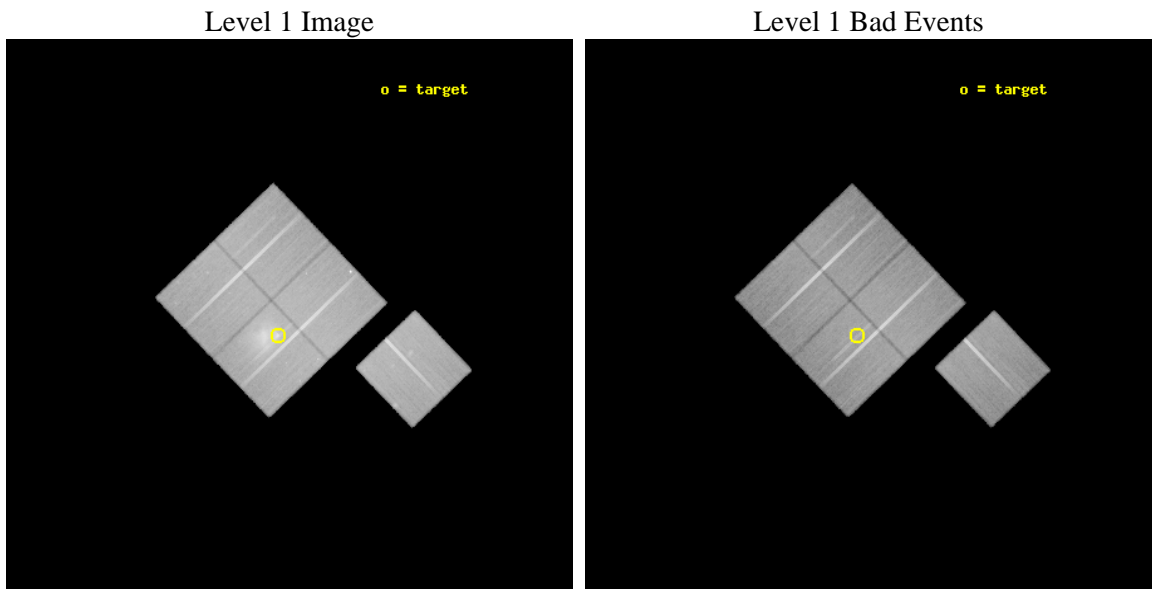
seq_num	800429	Sequence number
obs_id	5361	Observation id
title	THE MOST INTERESTING CLUSTER IN THE UNIVERSE	Proposal title
observer	Dr Maxim Markevitch	Principal investigator
object	1E0657-56	Source name
dtcycle	0	
cycle	P	events from which exps? Prim/Second/Both
ra_targ	104.5827	Observer's specified target RA [deg]
dec_targ	-55.9415	Observer's specified target Dec [deg]
ra_nom	104.54732692819	Nominal RA [deg]
dec_nom	-55.919863632523	Nominal Dec [deg]
roll_nom	136.17938302171	Nominal Roll [deg]
revision	3	Processing version of data
ontime	83712.235998005	Sum of GTIs [s]
liveltime	82618.474006639	Livetime [s]
ontime0	83712.235898286	Sum of GTIs [s]
ontime1	83705.953947932	Sum of GTIs [s]
ontime2	83718.517888606	Sum of GTIs [s]
ontime3	83712.235998005	Sum of GTIs [s]
ontime6	83721.658878744	Sum of GTIs [s]
l2events	340810	Number of level 2 events



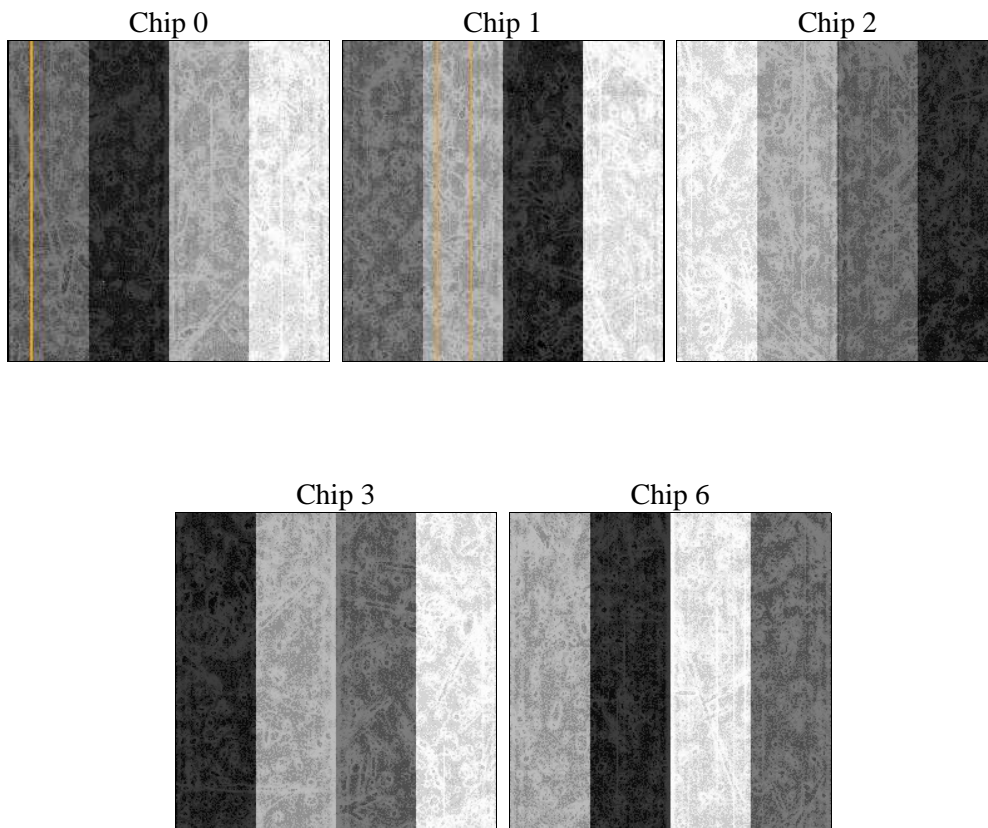
2 OBI

2.1 OBI

2.1.1 Images



2.1.2 Bias



2.1.3 Parameters

obi_num	1	Obi number	sched_exp_time	83550.000000	[s] Scheduled observation exposure time
ascdsver	8.5	Processing system revision	ontime	83712.235998005	Sum of GTIs [s]
caldbver	4.5.4	 	ontime0	83712.235898286	Sum of GTIs [s]
date	2012-12-07T19:06:10	Date and time of file creation	ontime1	83705.953947932	Sum of GTIs [s]
revision	3	Processing version of data	ontime2	83718.517888606	Sum of GTIs [s]
			ontime3	83712.235998005	Sum of GTIs [s]
			ontime6	83721.658878744	Sum of GTIs [s]
			l1events	2661829	Number of level 1 events

2.1.4 Events

	ccd 0	ccd 1	ccd 2	ccd 3	ccd 6
level 1 events	478906	484028	551185	637022	510688
rejected events	428509	421888	496567	471484	455155
rejected %	89%	87%	90%	74%	89%

	ccd 0	ccd 1	ccd 2	ccd 3	ccd 6
grade 0 events	17446	25097	21753	112005	21400
	3%	5%	3%	17%	4%
grade 1 events	219	234	304	774	227
	0%	0%	0%	0%	0%
grade 2 events	11873	12897	12219	22287	11213
	2%	2%	2%	3%	2%
grade 3 events	5917	6499	5730	9457	6039
	1%	1%	1%	1%	1%
grade 4 events	5511	6469	5612	9328	5928
	1%	1%	1%	1%	1%
grade 5 events	17813	19162	17038	20506	20107
	3%	3%	3%	3%	3%
grade 6 events	9791	11302	9421	12766	11075
	2%	2%	1%	2%	2%
grade 7 events	410336	402368	479108	449899	434699
	85%	83%	86%	70%	85%

2.2 Compared Parameters

Parameter	Planned	Actual	Parameter	Planned	Actual
Instrument	ACIS	ACIS	Obspar format version number	7	7
Detector	ACIS-01236	ACIS-01236	Obspar file type	PREDICTED	ACTUAL
Grating	NONE	NONE	Obspar update status	NONE	UPDATED
Data mode	VFAINT	VFAINT	Number of optional ACIS chips dropped	0	0
Observation mode	POINTING	POINTING	On-chip summing requested	N	N
[deg] Pointing RA	104.594854	104.5473269281937	Subarray requested	NONE	NONE
[deg] Pointing Dec	-55.926296	-55.91986363252349	Alternating exposures requested	N	N
[deg] Pointing Roll	136.010067	136.1793830217089	[s] Primary exposure time	0.000000	3.1
[mm] SIM focus pos	-0.782348	-0.7809083437167272			
[mm] SIM defocus	0	0.001439871863259334			
[mm] SIM translation stage pos	-226.592463	-226.5875806612856			
[mm] SIM translation stage offset	-7	-7.004872341644045			
[s] Observation start time (MET)	209126913.184000	209125831.35852			
Observation start date	2004-08-17T10:47:29	2004-08-17T10:30:31			
[s] Observation end time (MET)	209210463.184000	209211452.68733			
Observation end date	2004-08-18T09:59:59	2004-08-18T10:17:32			
Read mode	TIMED	TIMED			

2.3 Aspect

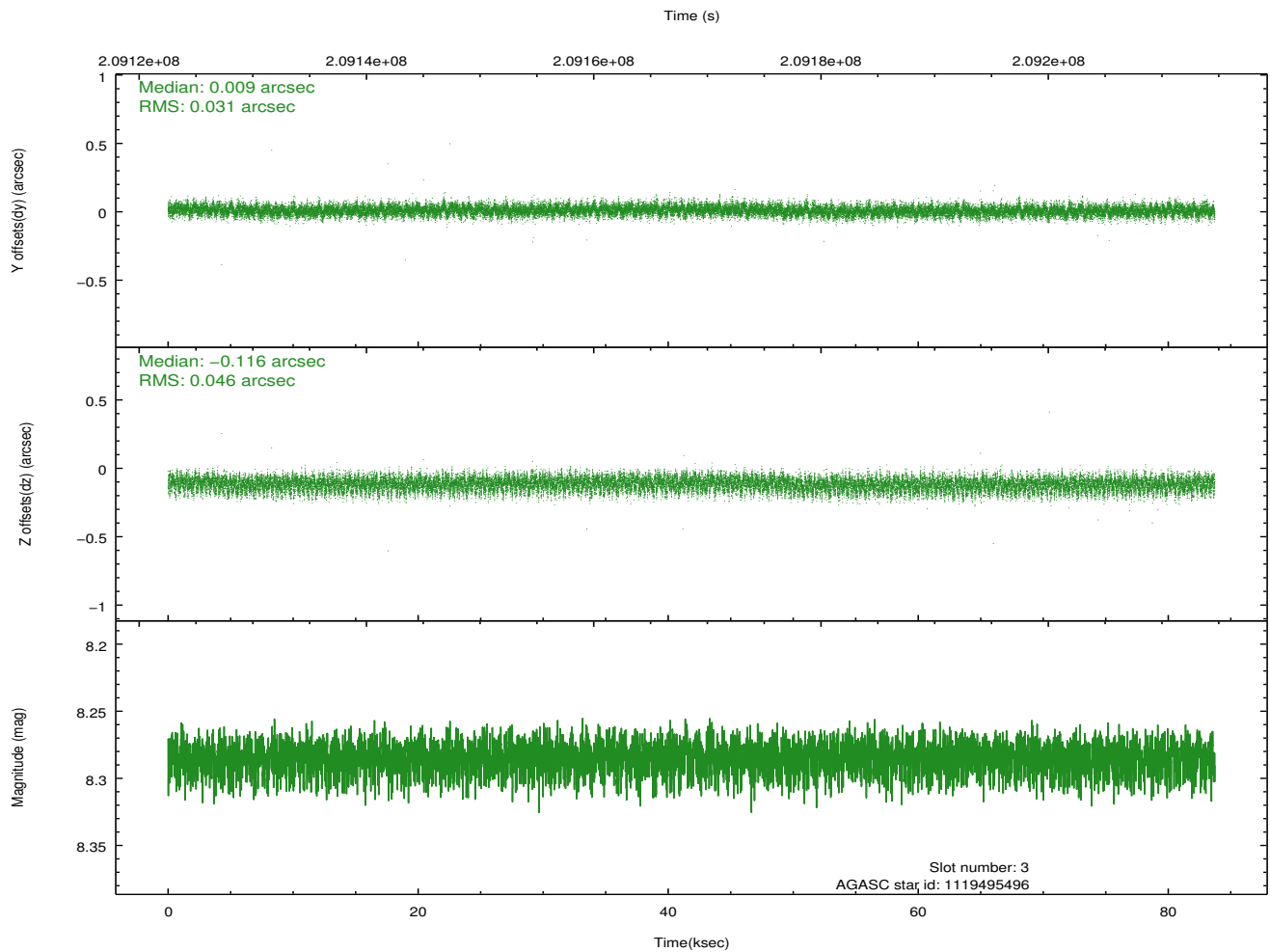
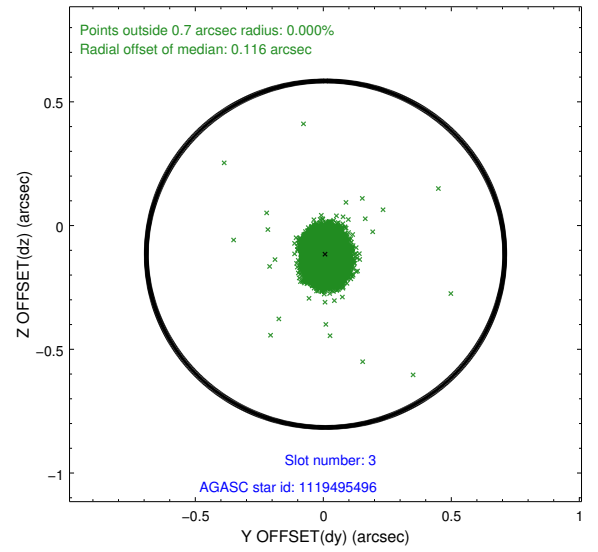
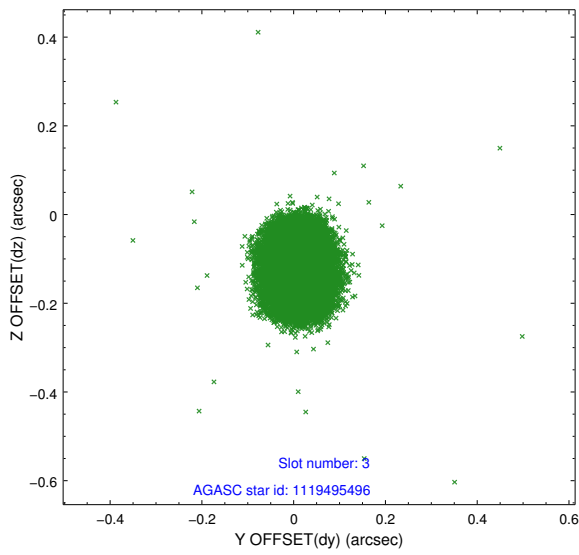
Slot Statistics

slot	status	id	mag	n_pts	med_dy	med_dz	dr1	dr2	ra	dec	mean_y	mean_z
0	FID	ACIS-I-1	7.23	20422	0.073	-0.077	0.022	0.041	0.000000	0.000000	934.38	-977.93
1	FID	ACIS-I-2	7.17	20419	-0.153	0.051	0.018	0.041	0.000000	0.000000	-760.34	-983.34
2	FID	ACIS-I-4	7.14	20419	-0.018	0.094	0.016	0.053	0.000000	0.000000	2153.75	923.00
3	GUIDE	1119495496	8.28	40829	0.009	-0.116	0.058	0.096	104.298364	-55.915101	457.58	387.49
4	GUIDE	1119495968	7.06	40841	-0.096	0.053	0.045	0.072	105.873528	-55.948238	-1925.50	-1716.20
5	GUIDE	1119496704	7.86	40843	0.133	0.076	0.060	0.095	104.368364	-55.667750	977.04	-349.41
6	GUIDE	1120026344	6.70	40845	-0.089	-0.079	0.059	0.107	104.651539	-56.394853	-1252.90	1135.38
7	GUIDE	1119500592	8.69	40831	0.040	0.066	0.089	0.143	105.814889	-55.642715	-1088.84	-2439.99

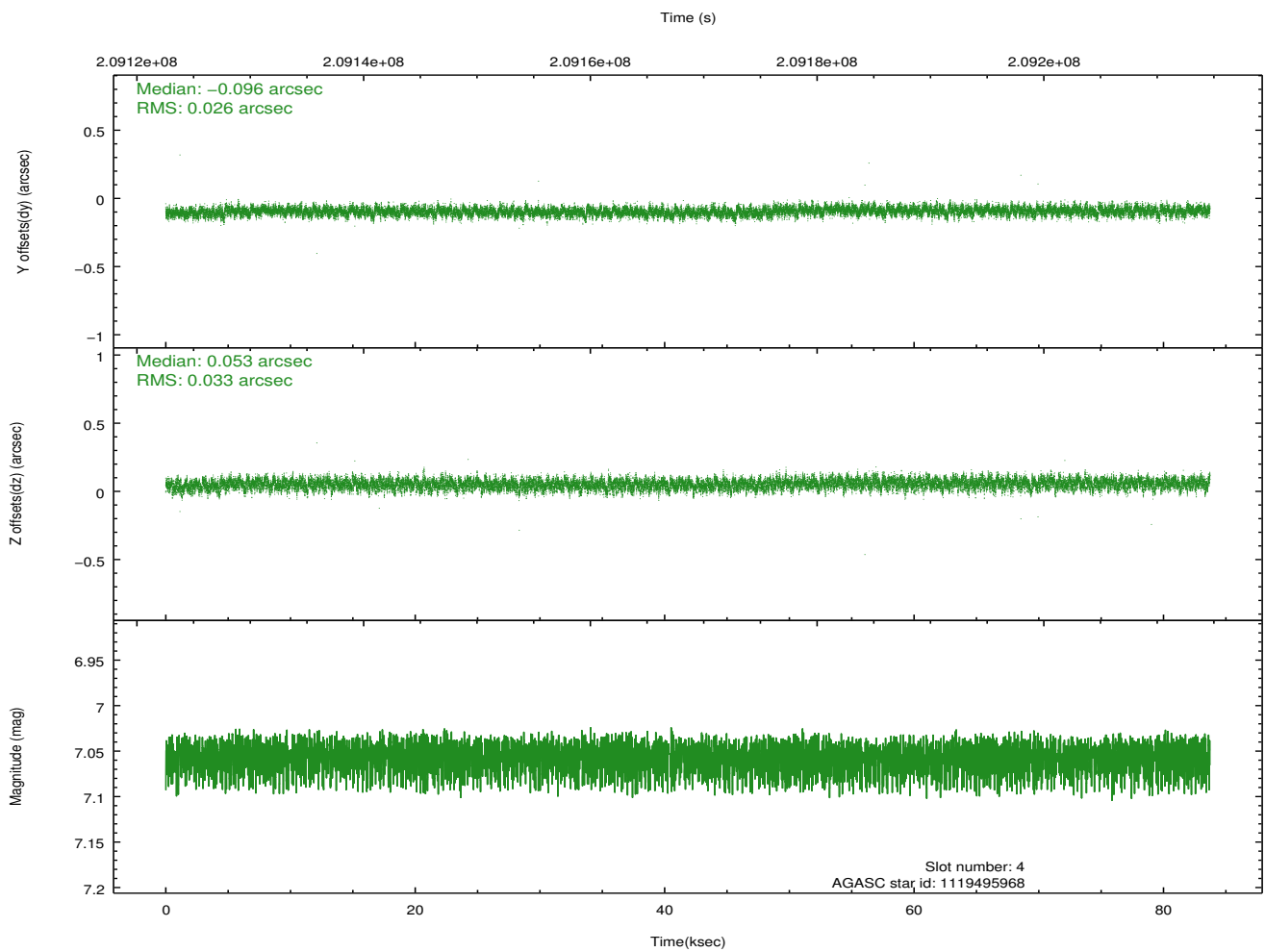
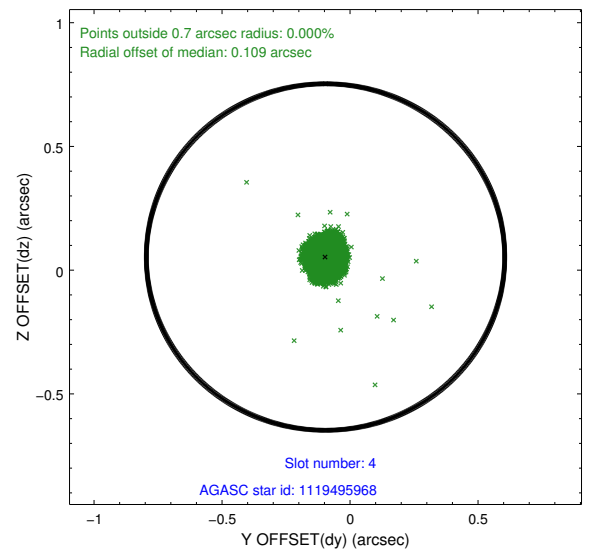
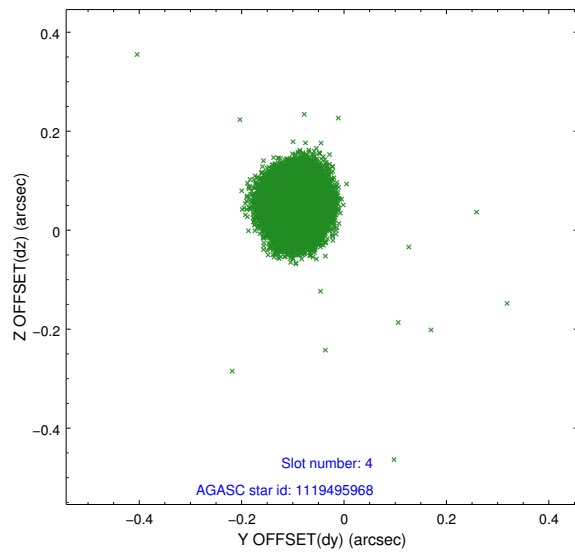
∞

2.4 Star Slots

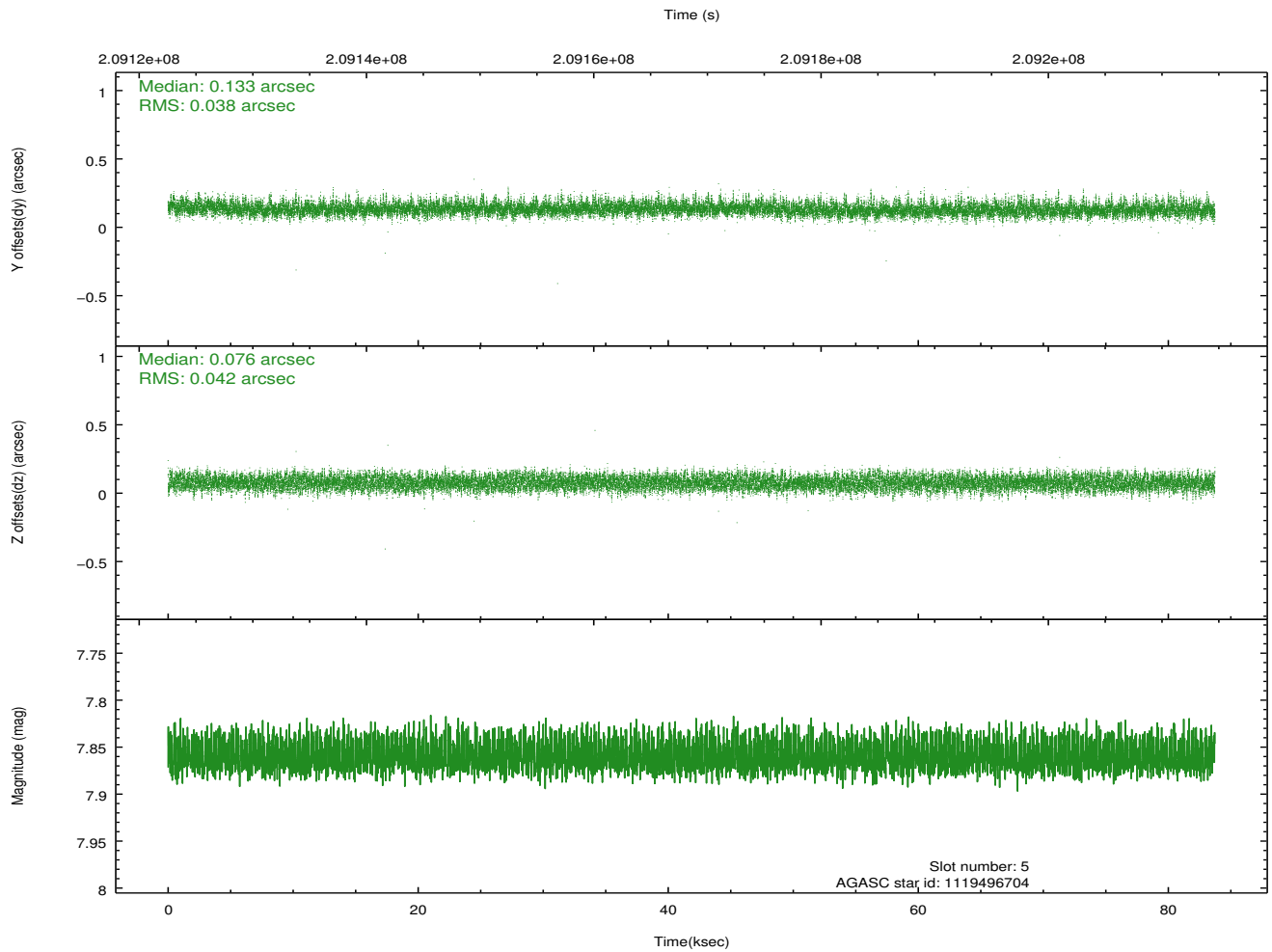
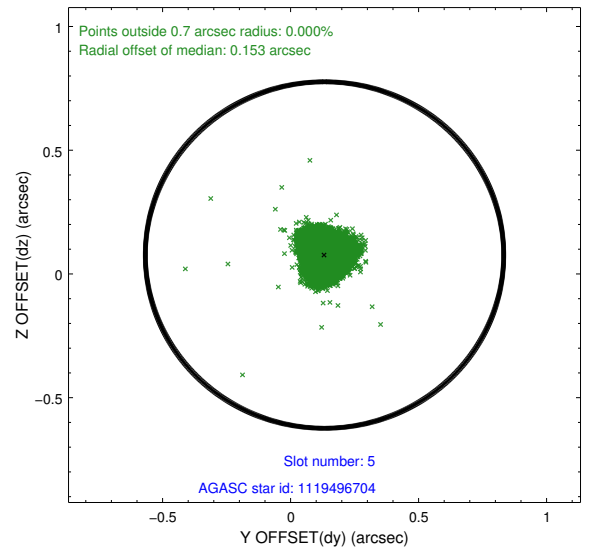
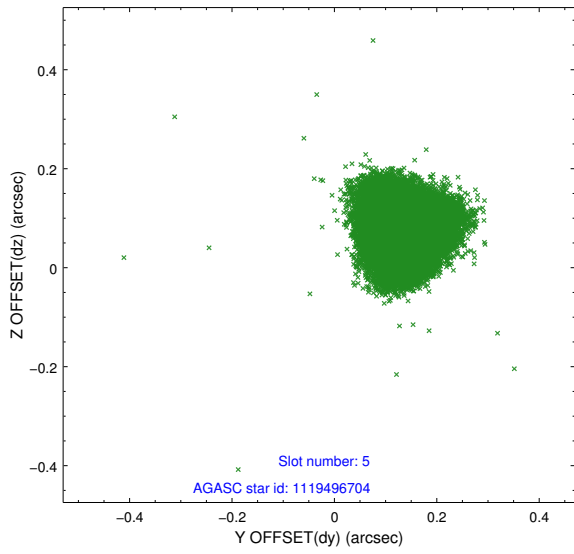
2.4.1 Slot 3



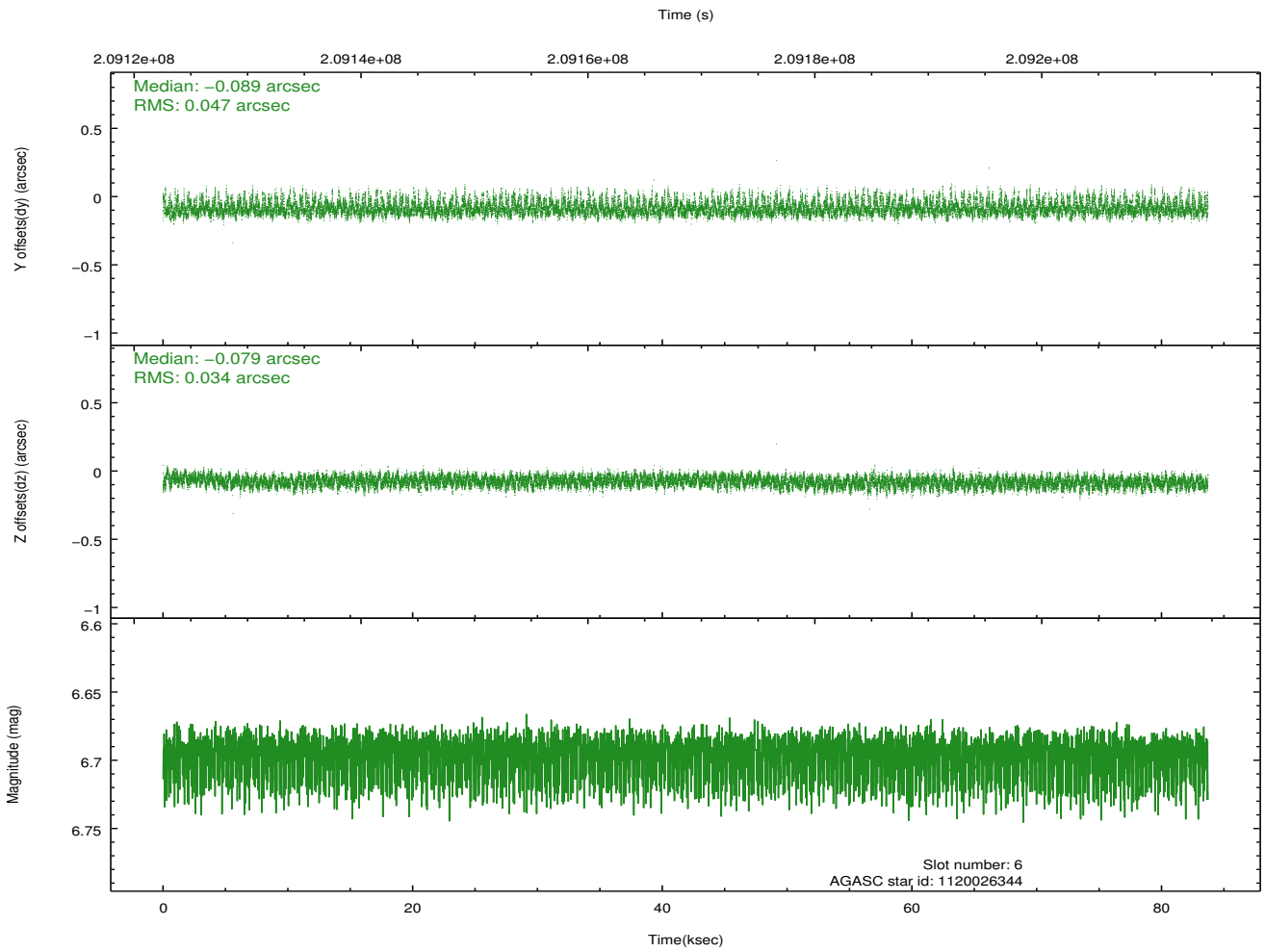
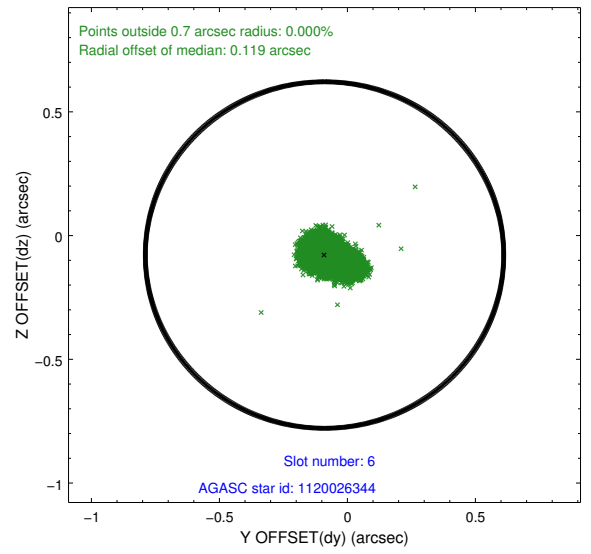
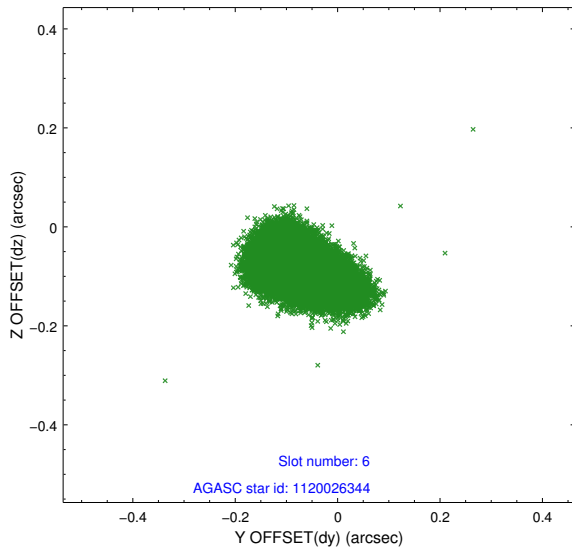
2.4.2 Slot 4



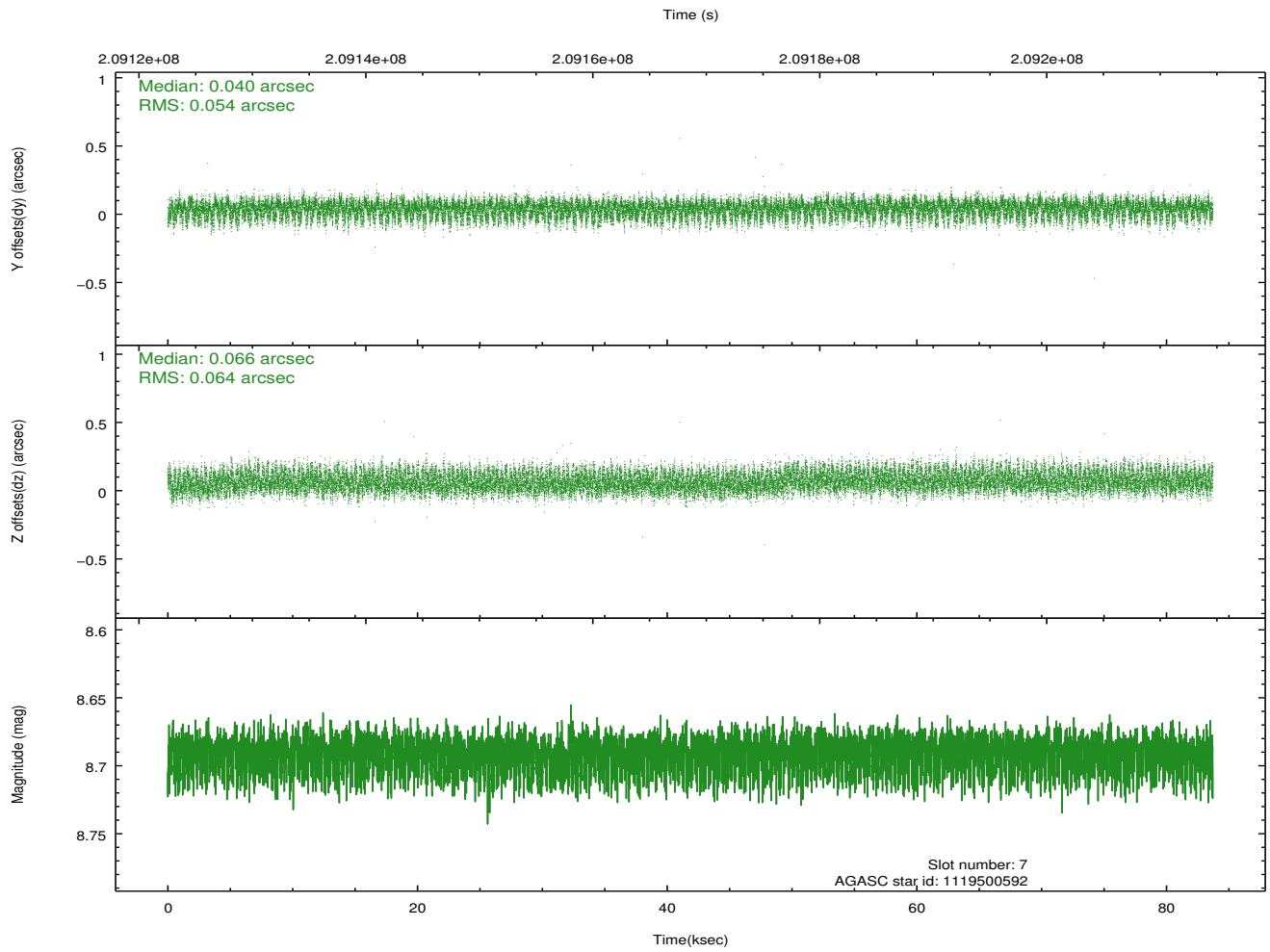
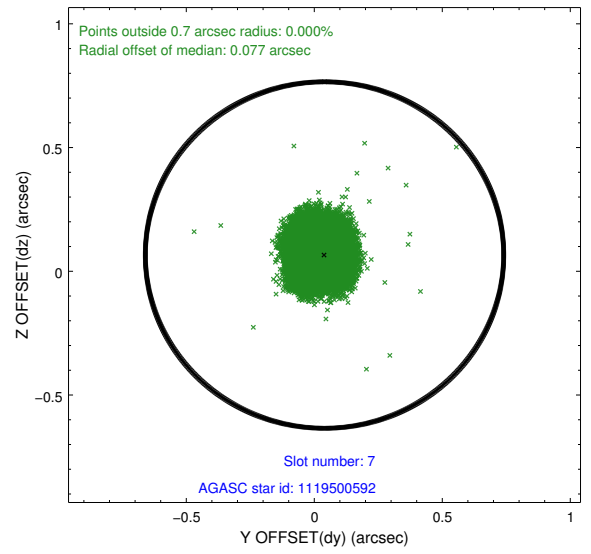
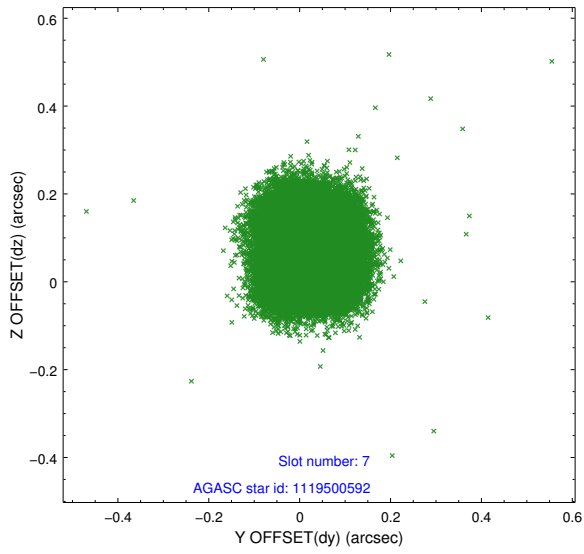
2.4.3 Slot 5



2.4.4 Slot 6

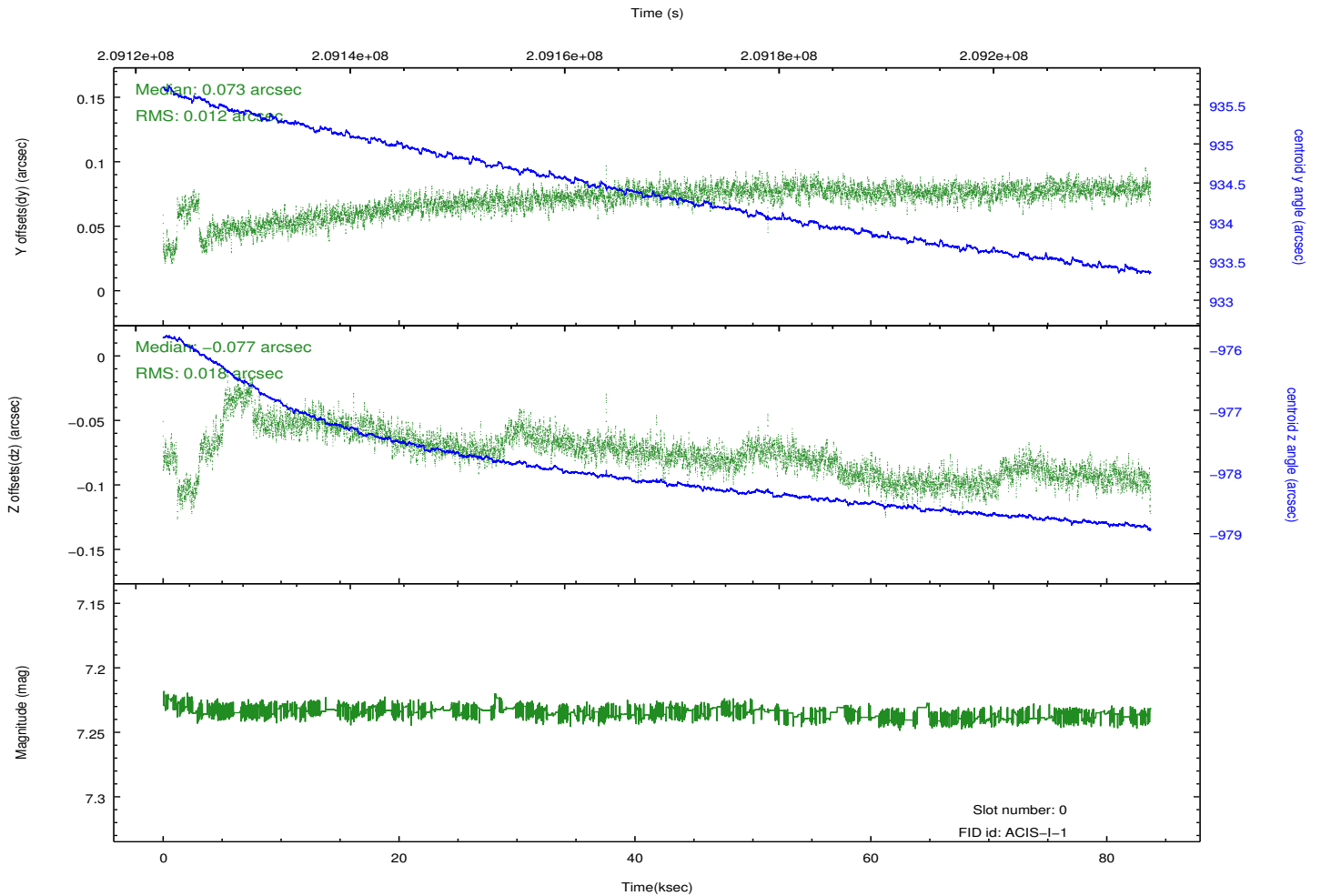
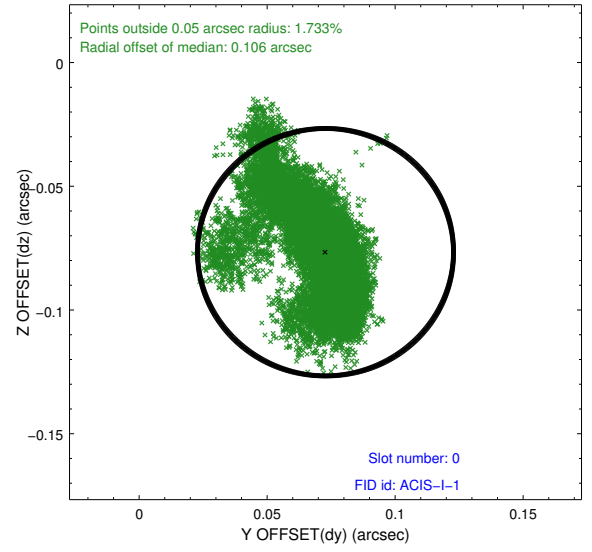
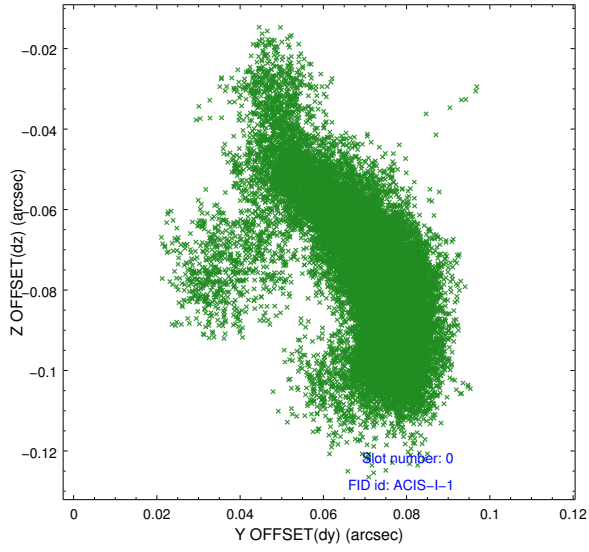


2.4.5 Slot 7

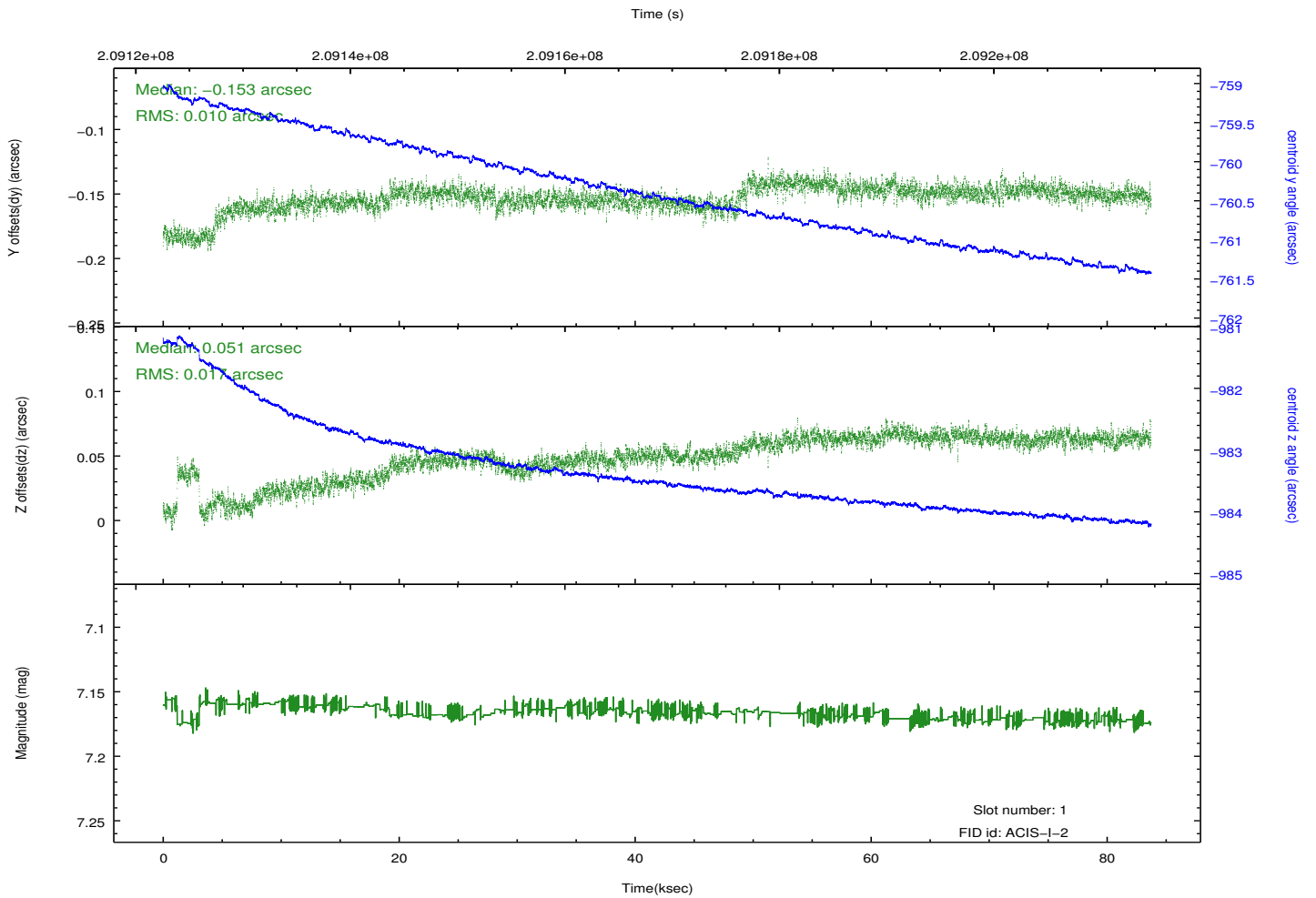
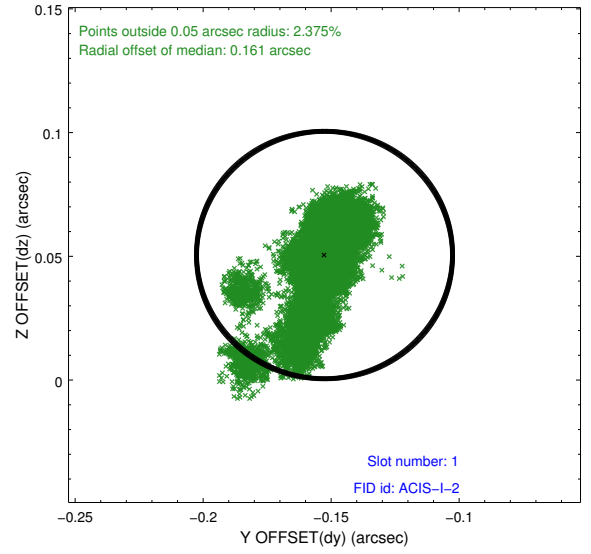
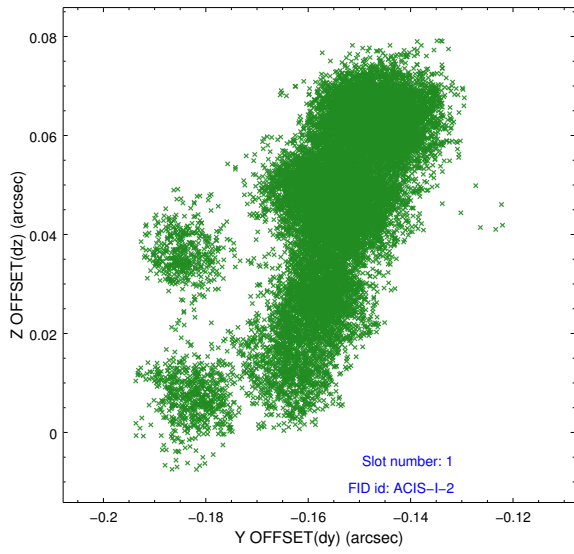


2.5 FID Slots

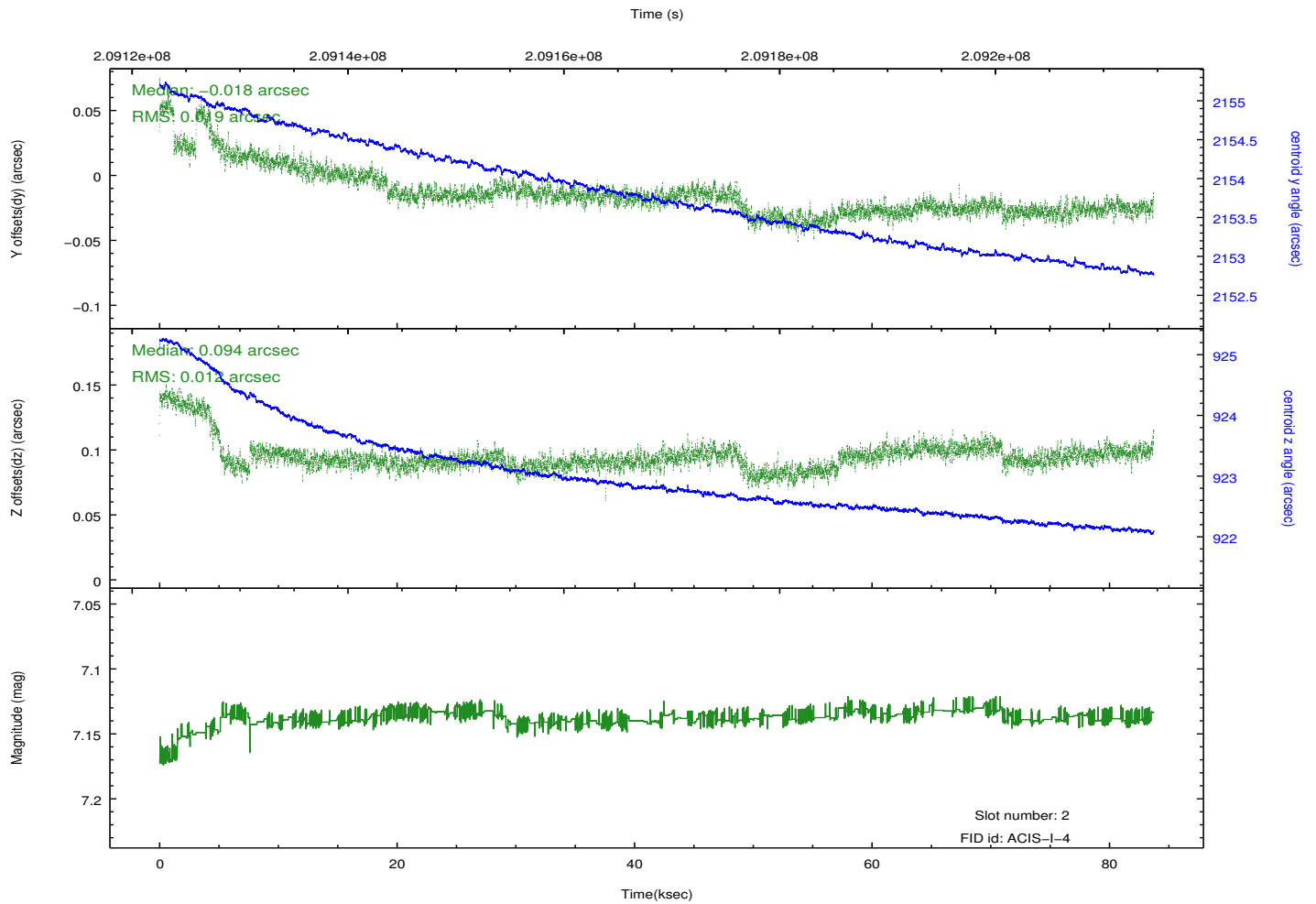
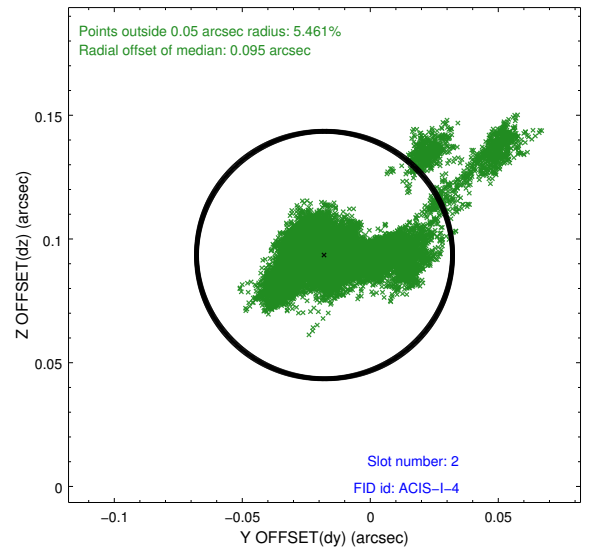
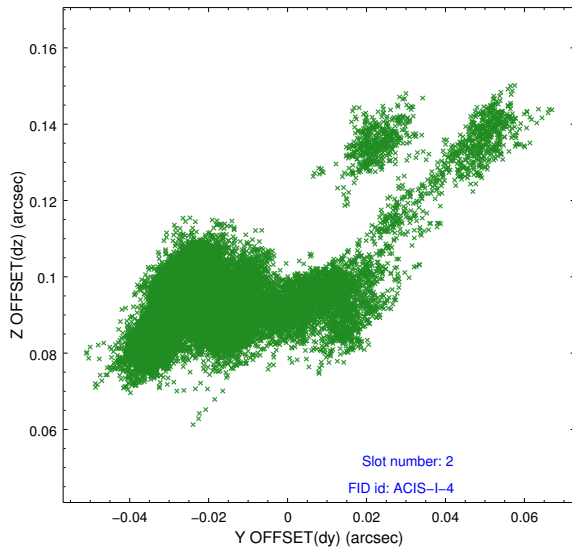
2.5.1 Slot 0



2.5.2 Slot 1



2.5.3 Slot 2



A Summary

A.1 Status

V&V Scientist	Beth Sundheim
V&V Date (YYYY-MM-DD)	2012.12.20
V&V Edition	1
V&V Disposition and Status	OK
V&V Charge Time	83.712

A.2 Comments