

V&V Reference Report

L2 ASCDS Version : 8.5.1.1

Observation 5381 - L2 Version 3
Chandra X-Ray Center

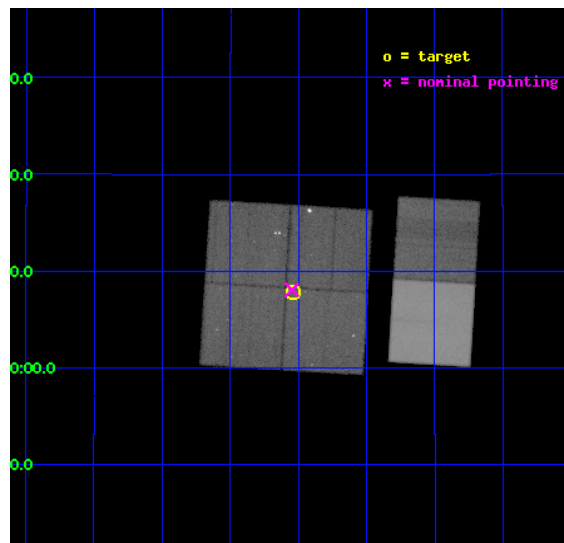
L2 Processing Date : Dec 31 2012

Contents

1	Front	2
2	OBI	3
2.1	OBI	3
2.1.1	Images	3
2.1.2	Bias	3
2.1.3	Parameters	4
2.1.4	Events	4
2.2	Compared Parameters	5
2.3	Aspect	6
2.4	Star Slots	9
2.4.1	Slot 3	9
2.4.2	Slot 4	10
2.4.3	Slot 5	11
2.4.4	Slot 6	12
2.4.5	Slot 7	13
2.5	FID Slots	14
2.5.1	Slot 0	14
2.5.2	Slot 1	15
2.5.3	Slot 2	16
A	Summary	17
A.1	Status	17
A.2	Comments	17

1 Front

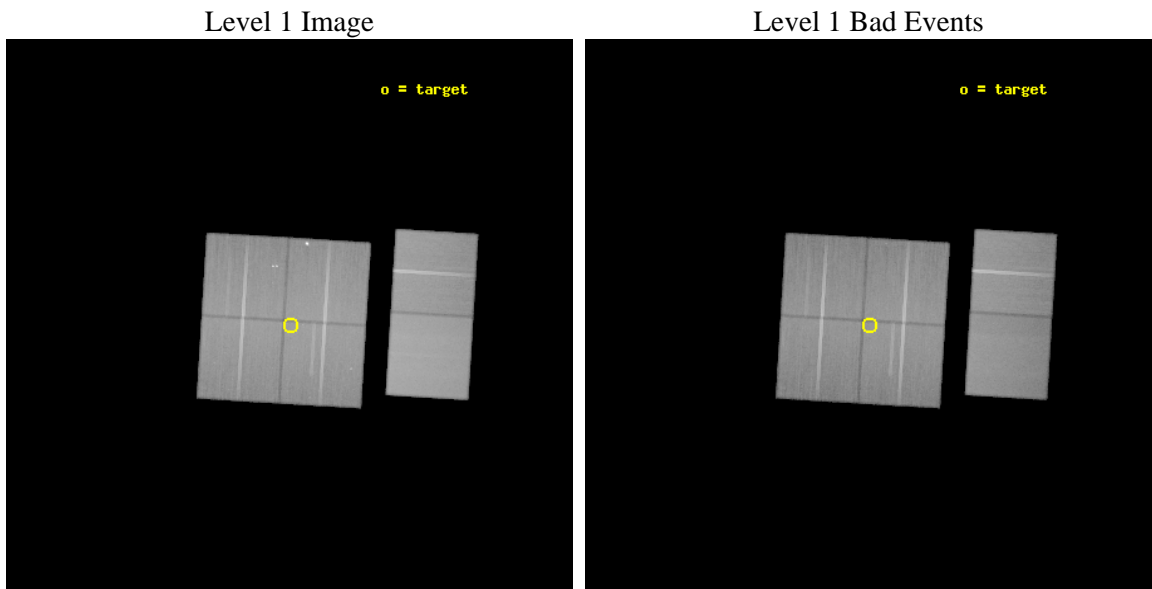
seq_num	200316	Sequence number
obs_id	5381	Observation id
title	X-ray emission from fast moving shocks in the protostellar jet HH 154: a binding diagnostic of the emission mechanism	Proposal title
observer	Dr. Fabio Favata	Principal investigator
object	HH 154	Source name
dtcycle	0	
cycle	P	events from which exps? Prim/Second/Both
ra_targ	67.885417	Observer's specified target RA [deg]
dec_targ	18.130278	Observer's specified target Dec [deg]
ra_nom	67.887047447632	Nominal RA [deg]
dec_nom	18.134663647282	Nominal Dec [deg]
roll_nom	93.482593676166	Nominal Roll [deg]
revision	3	Processing version of data
ontime	98172.758633941	Sum of GTIs [s]
livetime	96929.63605158	Livetime [s]
ontime0	98172.758633971	Sum of GTIs [s]
ontime1	98172.758633941	Sum of GTIs [s]
ontime2	98175.999634266	Sum of GTIs [s]
ontime3	98172.758633941	Sum of GTIs [s]
ontime6	98169.517623782	Sum of GTIs [s]
ontime7	98175.999634266	Sum of GTIs [s]
l2events	819892	Number of level 2 events



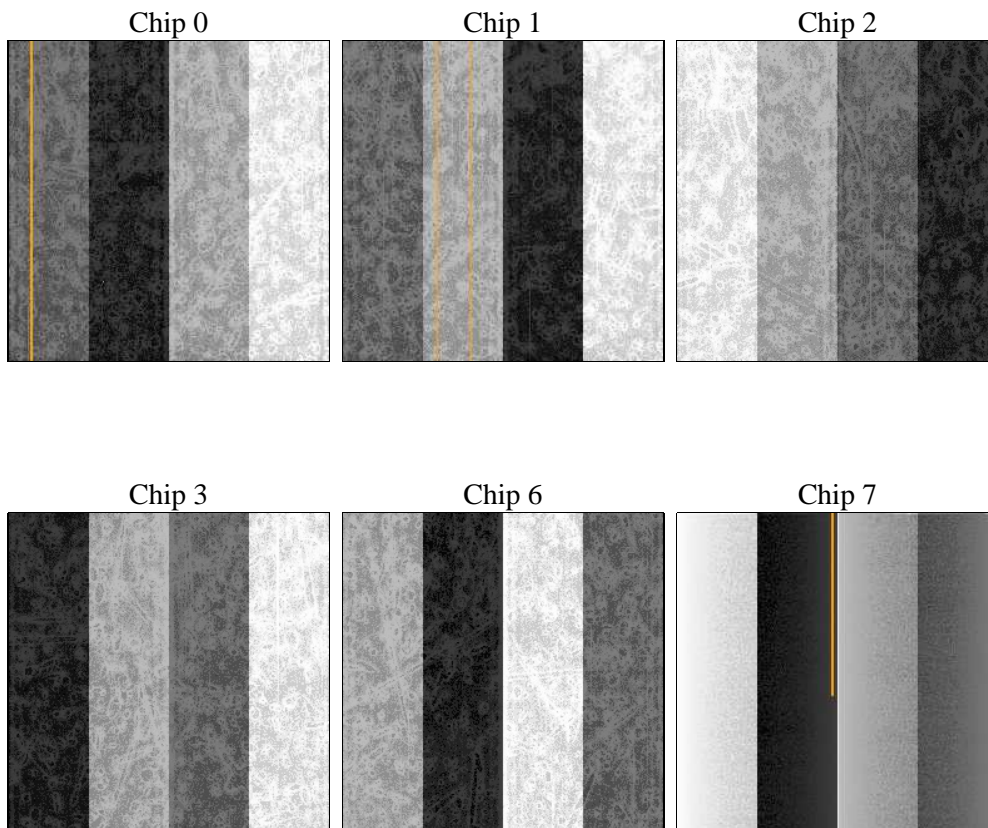
2 OBI

2.1 OBI

2.1.1 Images



2.1.2 Bias



2.1.3 Parameters

obi_num	1	Obi number	sched_exp_time	98000.000000	[s] Scheduled observation exposure time
ascdsver	8.5.1.1	Processing system revision	ontime	98172.758633941	Sum of GTIs [s]
caldbver	4.5.5	 	ontime0	98172.758633971	Sum of GTIs [s]
date	2012-12-31T03:40:10	Date and time of file creation	ontime1	98172.758633941	Sum of GTIs [s]
revision	3	Processing version of data	ontime2	98175.999634266	Sum of GTIs [s]
			ontime3	98172.758633941	Sum of GTIs [s]
			ontime6	98169.517623782	Sum of GTIs [s]
			ontime7	98175.999634266	Sum of GTIs [s]
			l1events	4792302	Number of level 1 events

2.1.4 Events

	ccd 0	ccd 1	ccd 2	ccd 3	ccd 6	ccd 7		ccd 0	ccd 1	ccd 2	ccd 3	ccd 6	ccd 7
level 1 events	712035	707604	783847	754766	797711	1036339	grade 0 events	42422	35692	50460	38830	33641	34992
rejected events	616210	612910	682005	665682	708196	613894		5%	5%	6%	5%	4%	3%
rejected %	86%	86%	87%	88%	88%	59%	grade 1 events	470	398	535	450	370	946
								0%	0%	0%	0%	0%	0%
							grade 2 events	19976	21722	19313	17264	19724	83554
								2%	3%	2%	2%	2%	8%
							grade 3 events	8979	9447	8707	8730	8669	36569
								1%	1%	1%	1%	1%	3%
							grade 4 events	8358	9069	8661	8520	8601	36151
								1%	1%	1%	1%	1%	3%
							grade 5 events	30267	32740	29204	35143	36015	97926
								4%	4%	3%	4%	4%	9%
							grade 6 events	16163	18818	14779	15808	18941	231468
								2%	2%	1%	2%	2%	22%
							grade 7 events	585400	579718	652188	630021	671750	514733
								82%	81%	83%	83%	84%	49%

2.2 Compared Parameters

Parameter	Planned	Actual	Parameter	Planned	Actual
Instrument	ACIS	ACIS	Obspar format version number	7	7
Detector	ACIS-012367	ACIS-012367	Obspar file type	PREDICTED	ACTUAL
Grating	NONE	NONE	Obspar update status	NONE	UPDATED
Data mode	FAINT	FAINT	Number of optional ACIS chips dropped	0	0
Observation mode	POINTING	POINTING	On-chip summing requested	N	N
[deg] Pointing RA	67.903033	67.887047447632	Subarray requested	NONE	NONE
[deg] Pointing Dec	18.111871	18.13466364728151	Alternating exposures requested	N	N
[deg] Pointing Roll	93.268938	93.48259367616623	[s] Primary exposure time	0.000000	3.2
[mm] SIM focus pos	-0.782348	-0.7809083437167272			
[mm] SIM defocus	0	0.001439871863259334			
[mm] SIM translation stage pos	-233.592463	-233.5874344608287			
[mm] SIM translation stage offset	0	-0.005018542100998502			
[s] Observation start time (MET)	246802198.184000	246801098.47941			
Observation start date	2005-10-27T12:08:54	2005-10-27T11:51:38			
[s] Observation end time (MET)	246900198.184000	246901099.53401			
Observation end date	2005-10-28T15:22:14	2005-10-28T15:38:19			
Read mode	TIMED	TIMED			

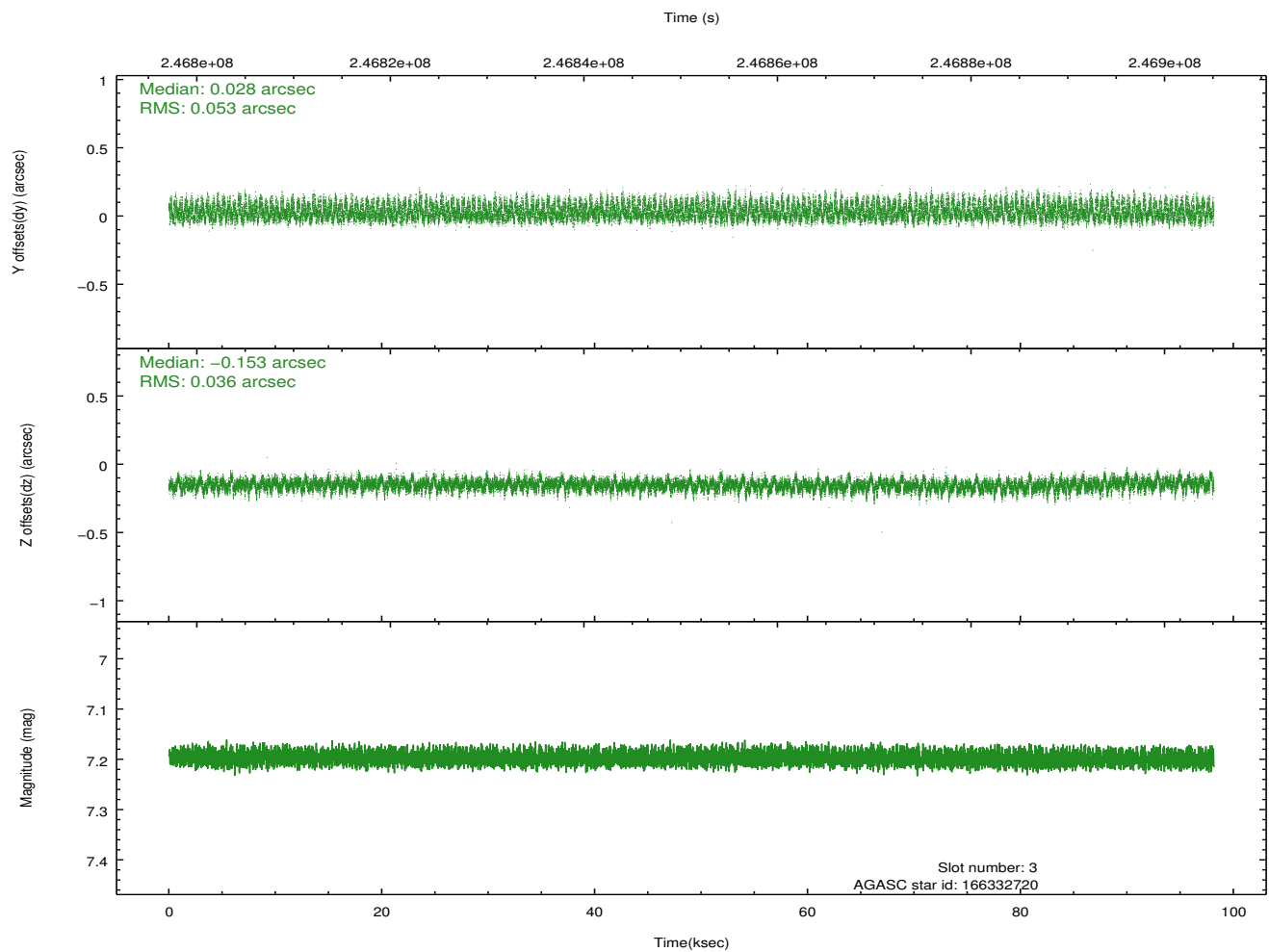
2.3 Aspect

Slot Statistics

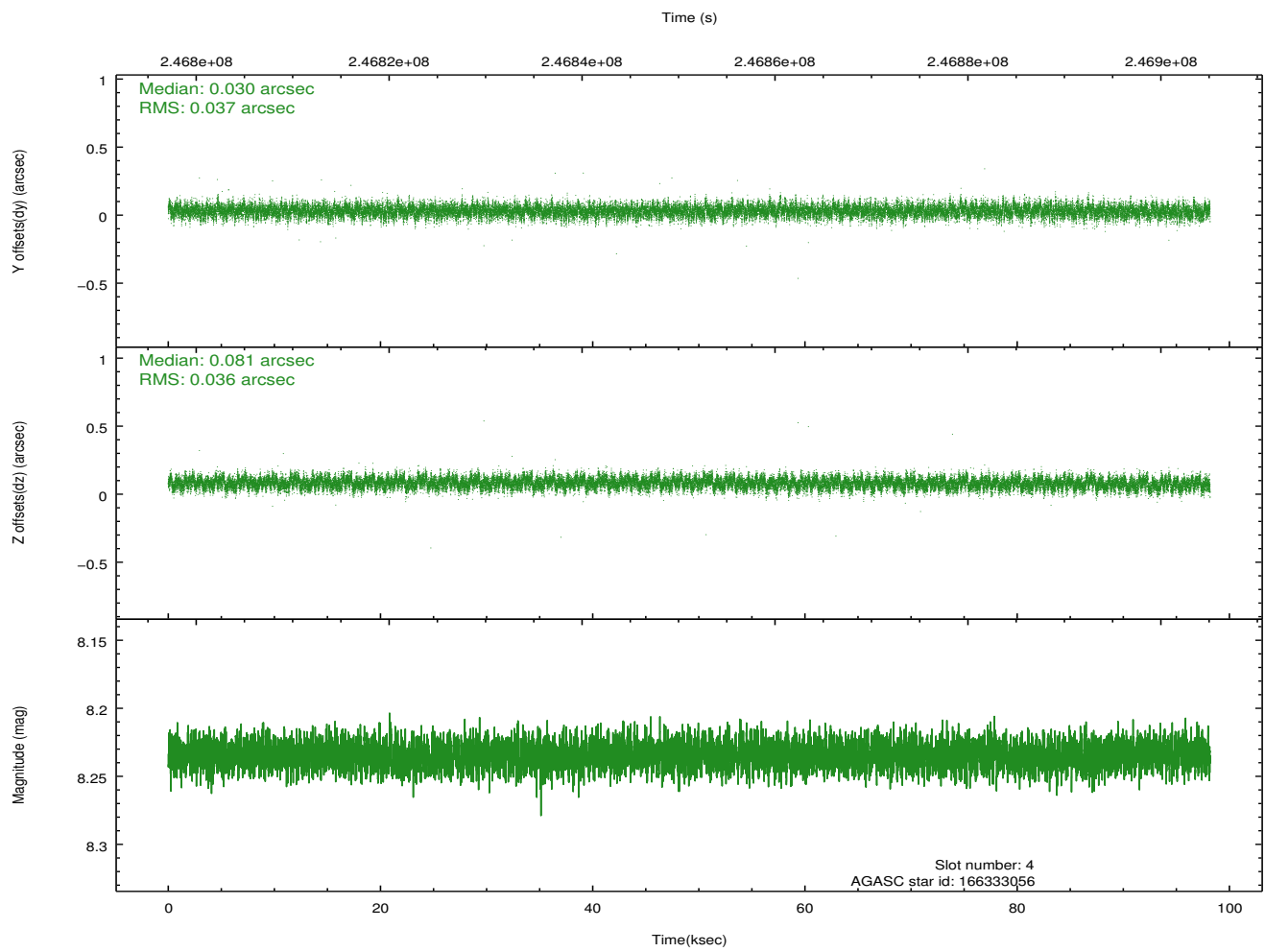
slot	status	id	mag	n_pts	med_dy	med_dz	dr1	dr2	ra	dec	mean_y	mean_z
0	FID	ACIS-I-1	7.25	23946	0.003	0.017	0.008	0.015	0.000000	0.000000	932.67	-833.26
1	FID	ACIS-I-5	7.23	23946	-0.152	0.026	0.007	0.014	0.000000	0.000000	-1815.65	1064.27
2	FID	ACIS-I-6	7.26	23945	0.057	0.027	0.008	0.013	0.000000	0.000000	398.35	1708.69
3	GUIDE	166332720	7.20	47894	0.028	-0.153	0.067	0.111	67.335629	17.544937	-1924.16	2060.15
4	GUIDE	166333056	8.23	47889	0.030	0.081	0.055	0.089	67.813257	17.557208	-1975.87	421.76
5	GUIDE	166334824	7.10	47890	-0.036	-0.150	0.058	0.096	67.376458	17.863163	-789.02	1851.89
6	GUIDE	166338584	9.35	47859	-0.006	0.013	0.094	0.157	67.904616	17.709782	-1445.61	76.78
7	GUIDE	166468240	9.07	47793	-0.024	0.215	0.103	0.199	68.167699	17.861525	-950.70	-853.49

2.4 Star Slots

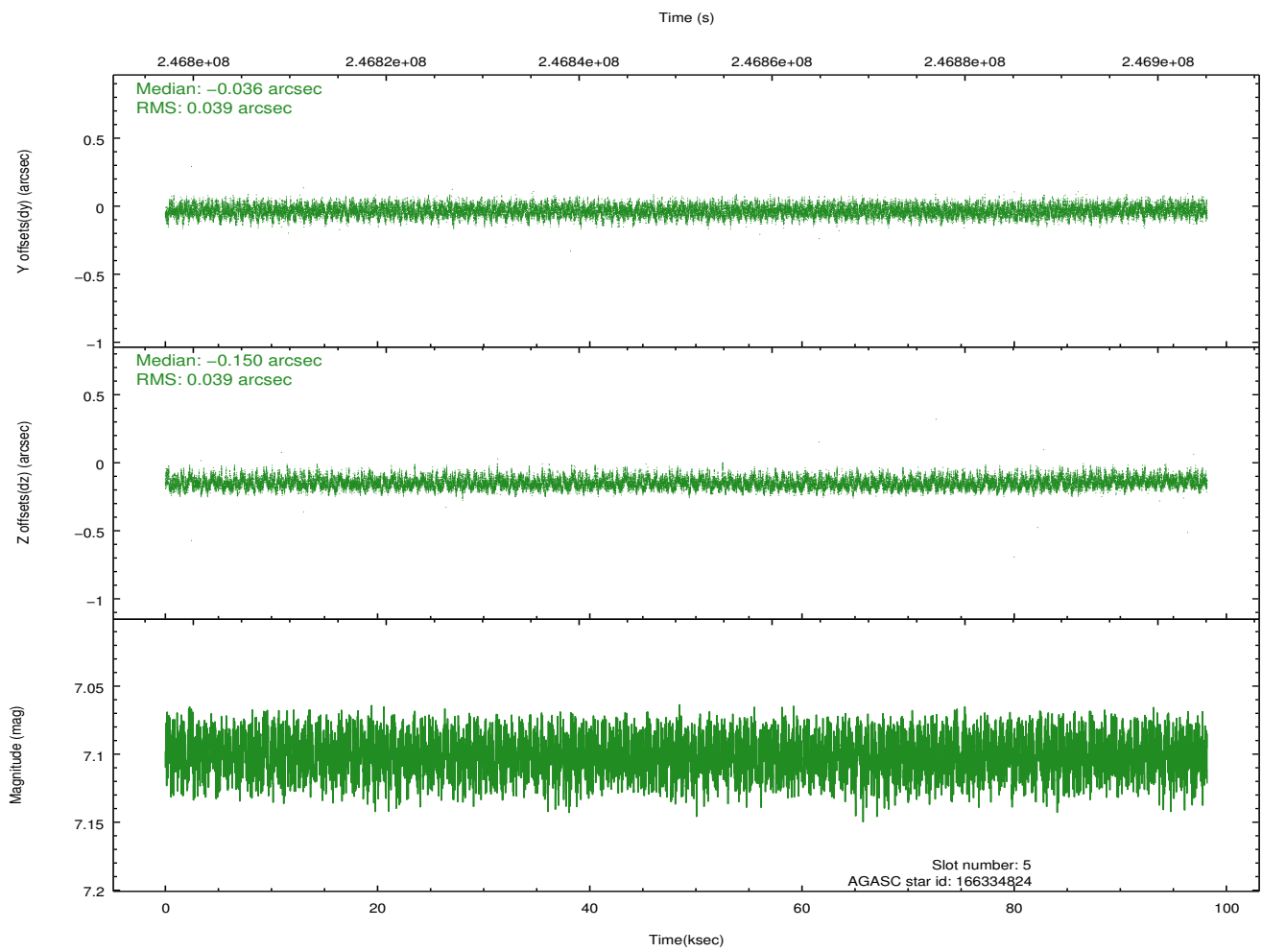
2.4.1 Slot 3



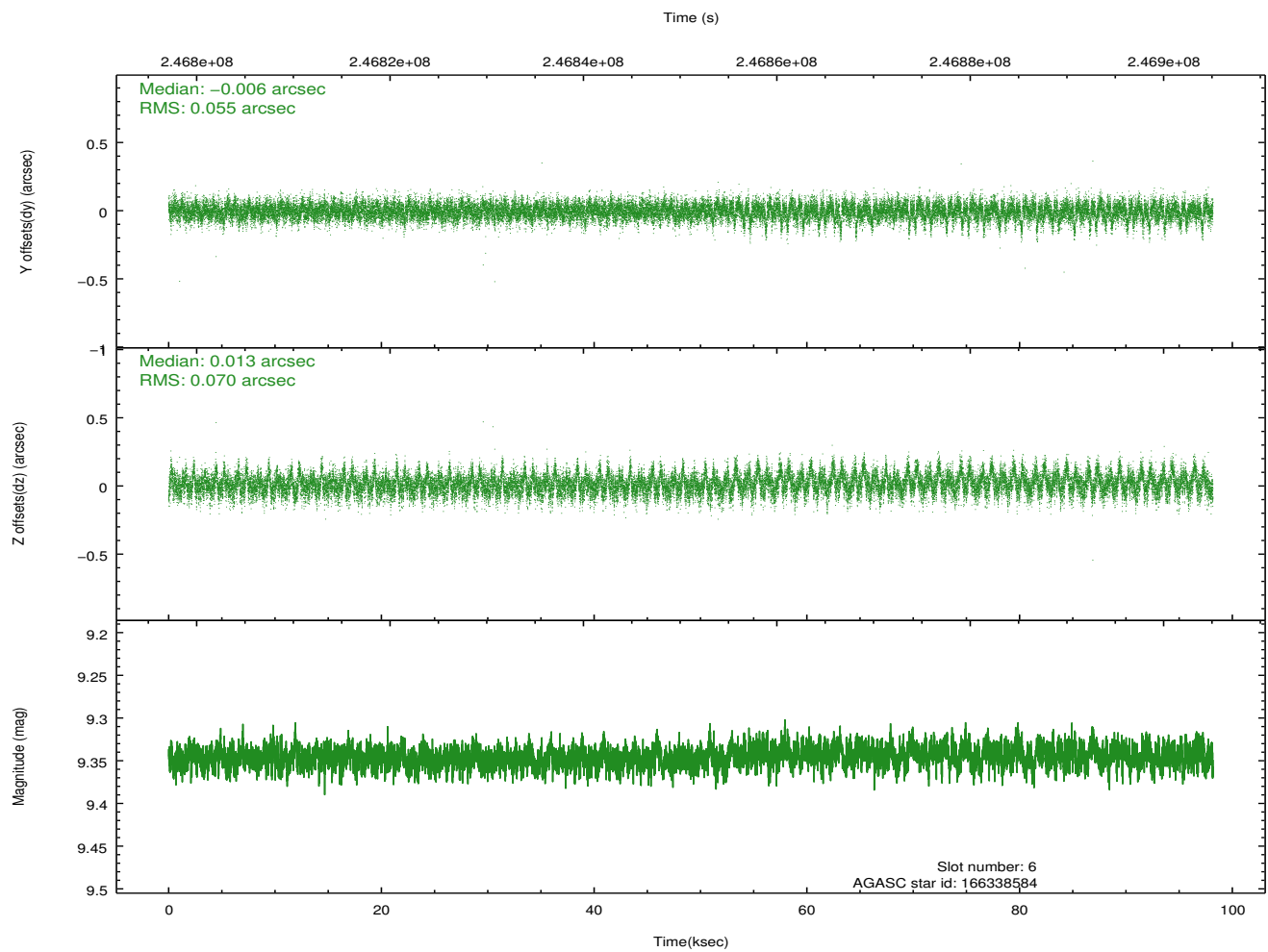
2.4.2 Slot 4



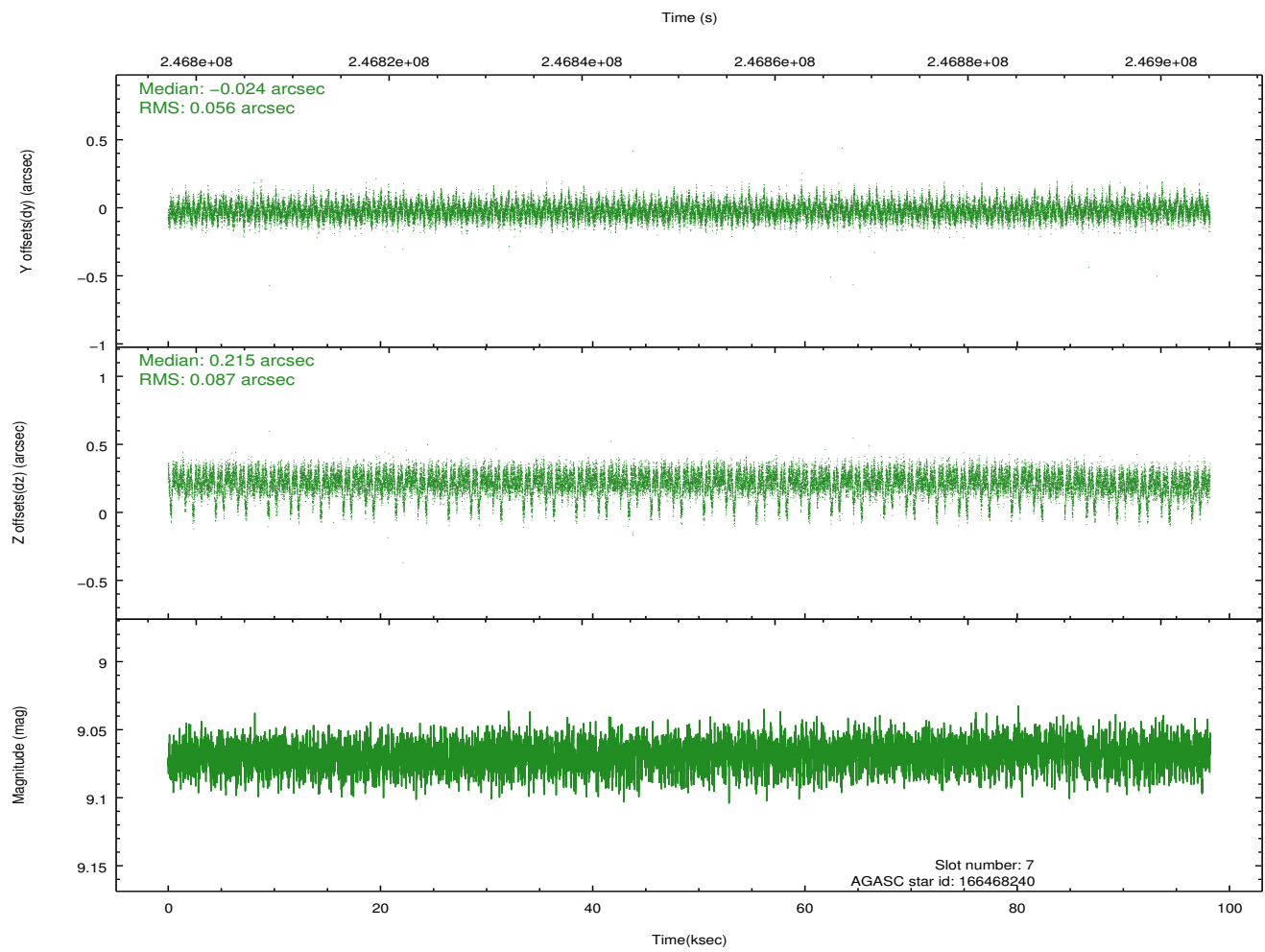
2.4.3 Slot 5



2.4.4 Slot 6

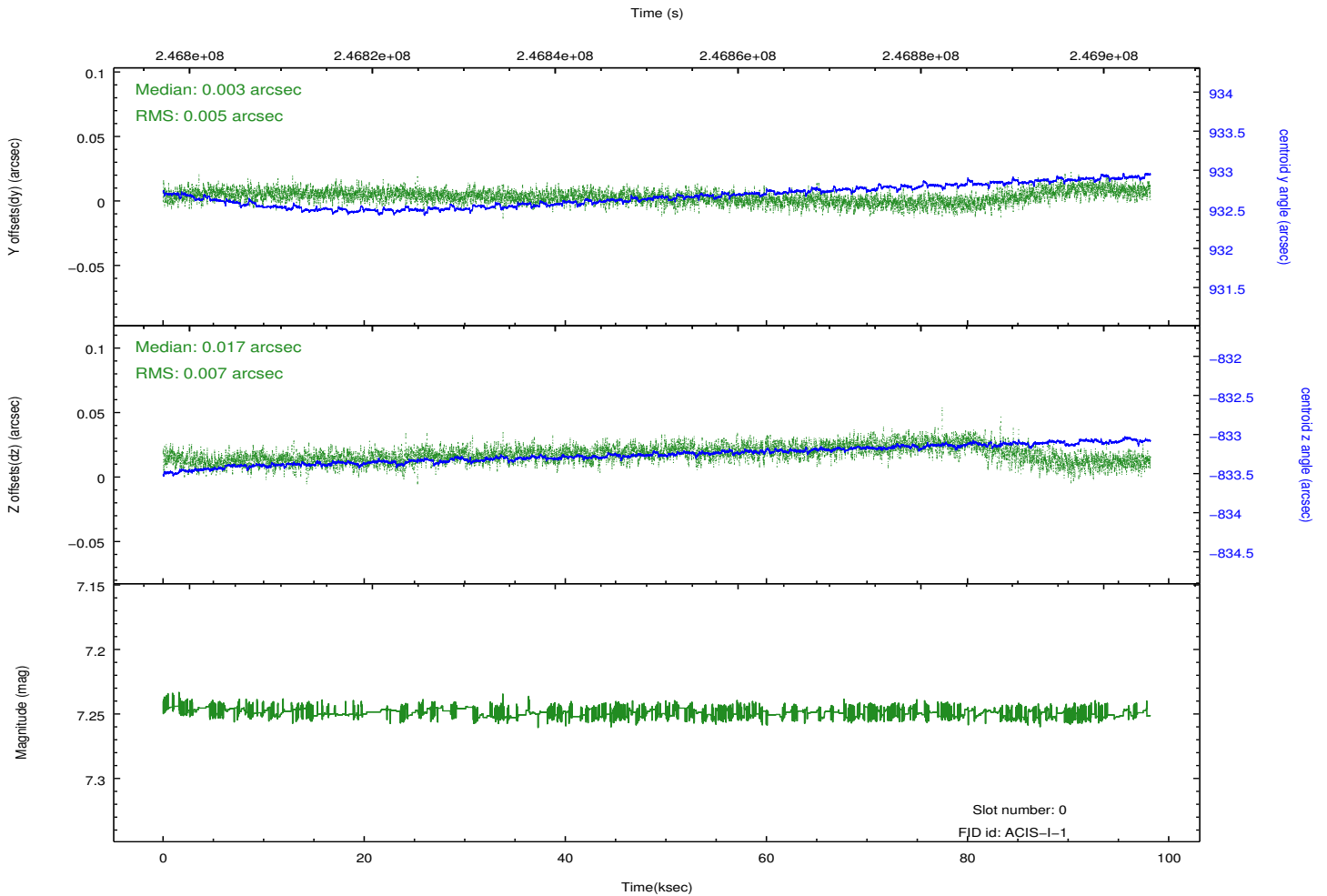
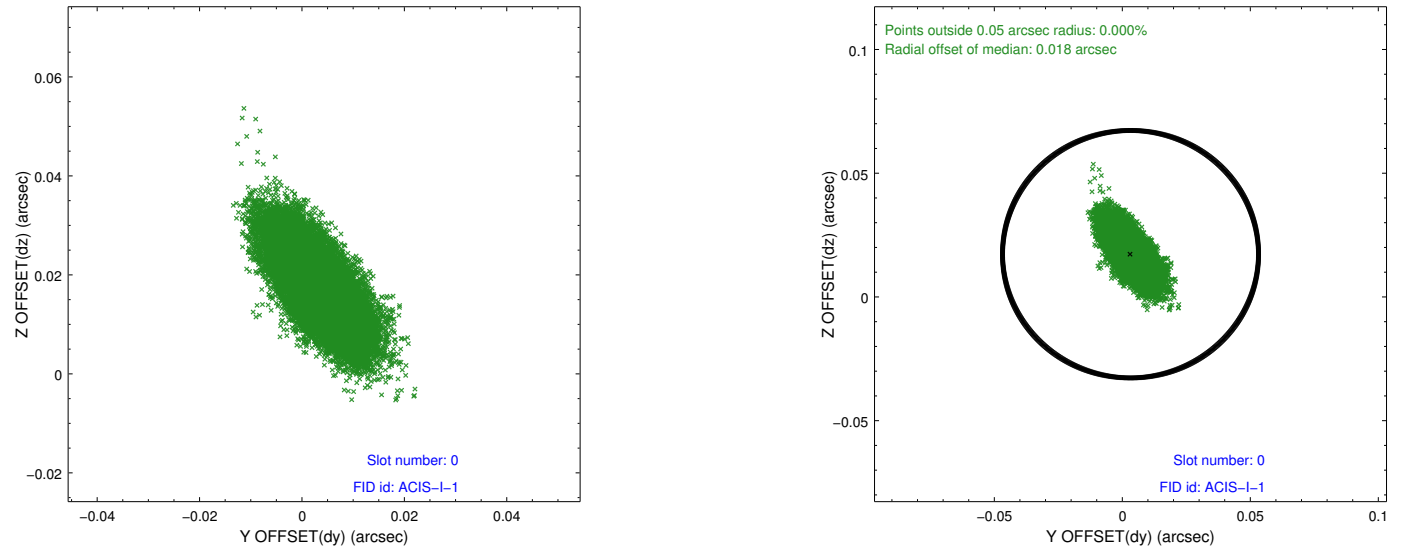


2.4.5 Slot 7

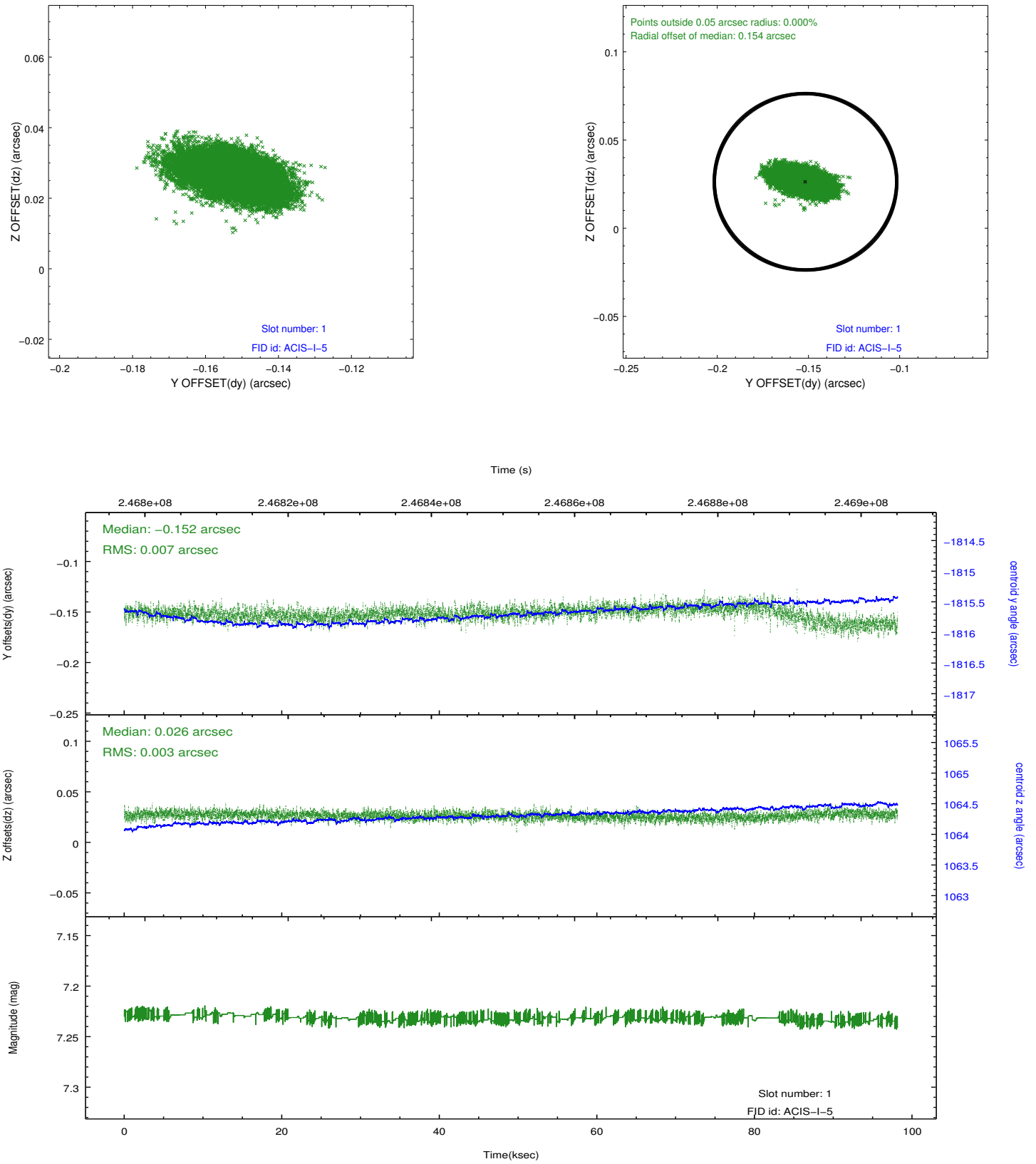


2.5 FID Slots

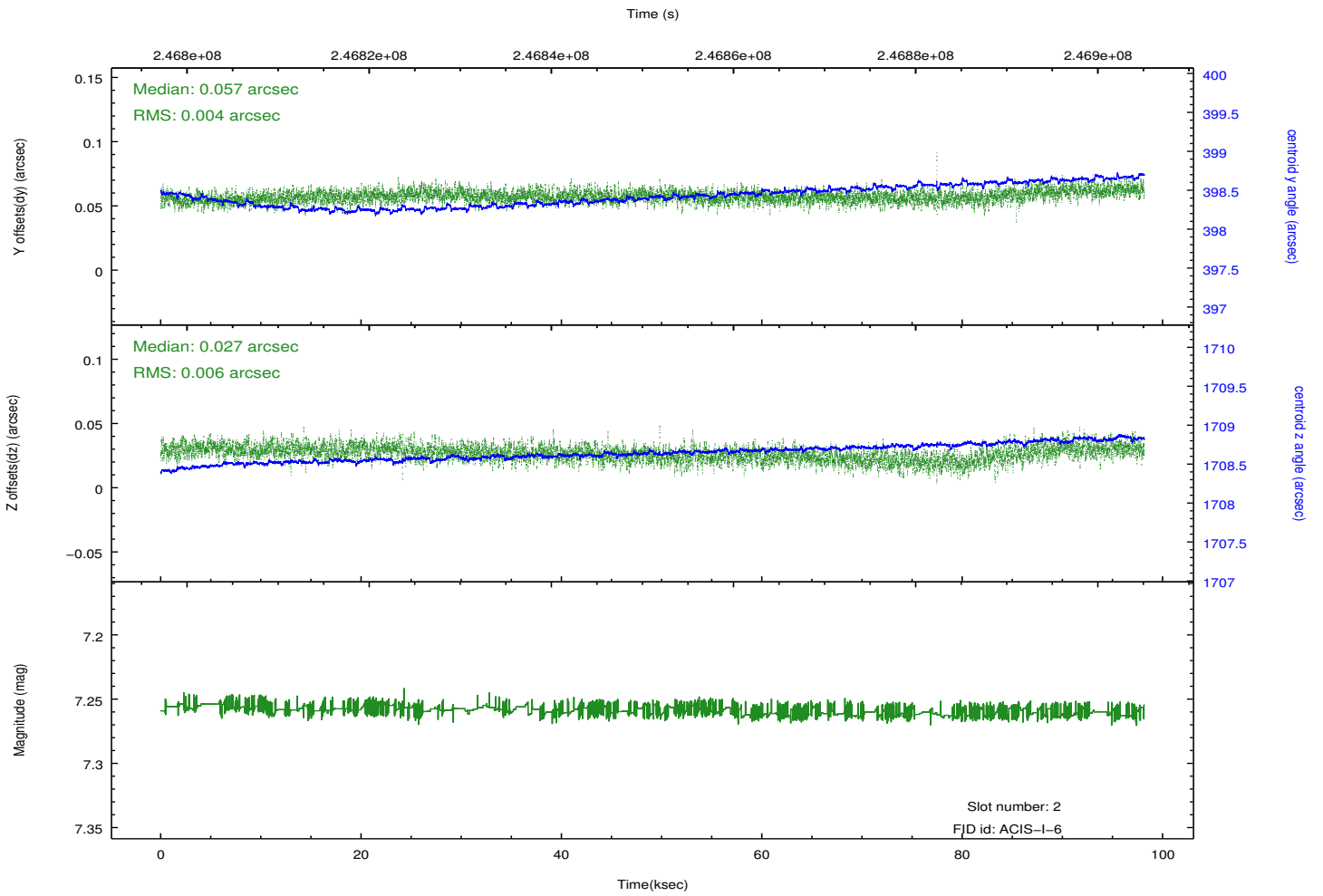
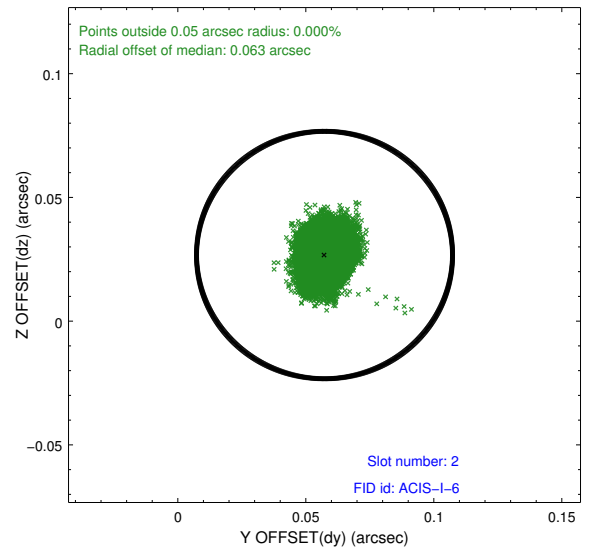
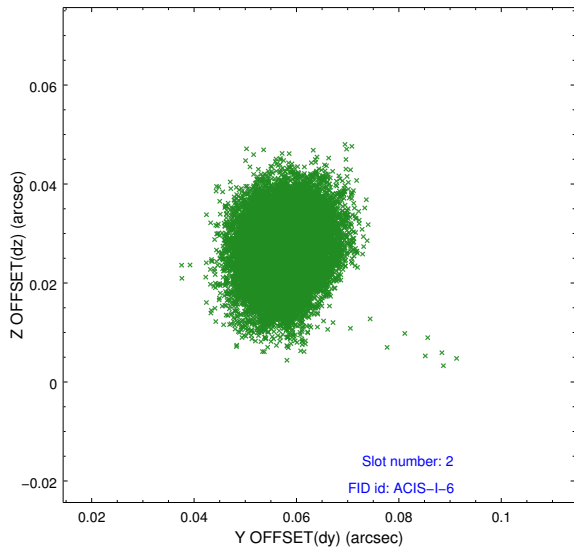
2.5.1 Slot 0



2.5.2 Slot 1



2.5.3 Slot 2



A Summary

A.1 Status

V&V Scientist	Jen Lauer
V&V Date (YYYY-MM-DD)	2013.01.28
V&V Edition	1
V&V Disposition and Status	OK
V&V Charge Time	98.17275

A.2 Comments

No source at requested position. There is a source at ra=67.89201, dec=18.13416, which is the SIMBAD 2000 position for HH154. The source is very close to the chip boundary. Roll preference not met. Joint Proposal: HST