

V&V Reference Report

L2 ASCDS Version : 8.5.1.1

Observation 5411 - L2 Version 3
Chandra X-Ray Center

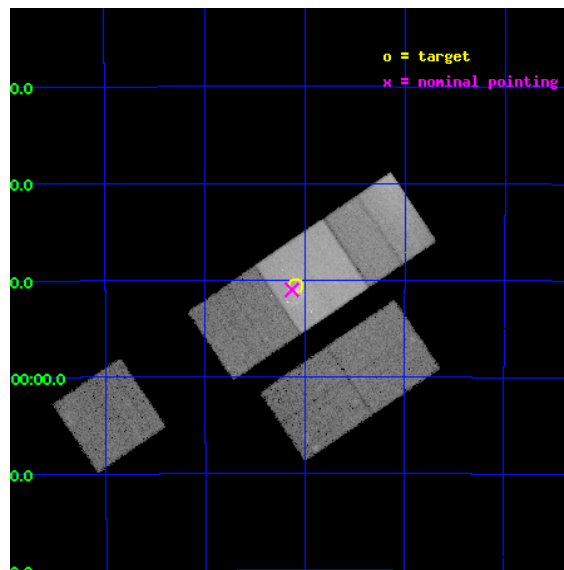
L2 Processing Date : Dec 25 2012

Contents

1	Front	2
2	OBI	3
2.1	OBI	3
2.1.1	Images	3
2.1.2	Bias	3
2.1.3	Parameters	4
2.1.4	Events	4
2.2	Compared Parameters	5
2.3	Aspect	6
2.4	Star Slots	9
2.4.1	Slot 3	9
2.4.2	Slot 4	10
2.4.3	Slot 5	11
2.4.4	Slot 6	12
2.4.5	Slot 7	13
2.5	FID Slots	14
2.5.1	Slot 0	14
2.5.2	Slot 1	15
2.5.3	Slot 2	16
A	Summary	17
A.1	Status	17
A.2	Comments	17

1 Front

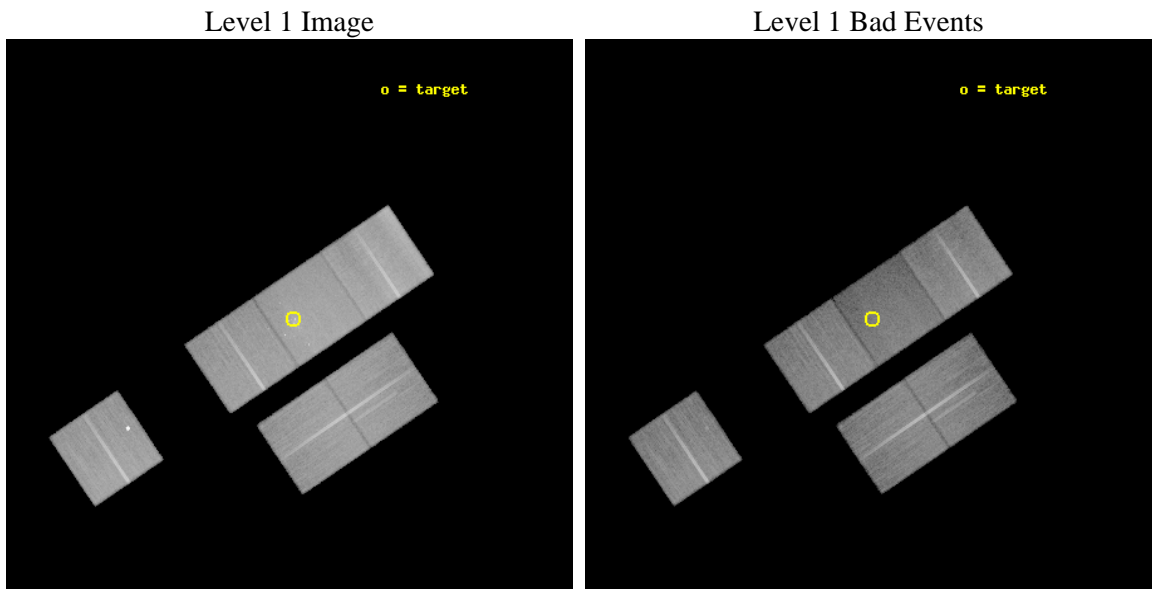
seq_num	200344	Sequence number
obs_id	5411	Observation id
title	A Rich Population of Massive Young Stars in the Cluster Westerlund 1	
observer	Dr. Stephen Skinner	Principal investigator
object	Westerlund1	Source name
dtcycle	0	
cycle	P	events from which exps? Prim/Second/Both
ra_targ	251.7725	Observer's specified target RA [deg]
dec_targ	-45.843528	Observer's specified target Dec [deg]
ra_nom	251.78246571209	Nominal RA [deg]
dec_nom	-45.85027469938	Nominal Dec [deg]
roll_nom	325.88128308069	Nominal Roll [deg]
revision	3	Processing version of data
ontime	38966.399854839	Sum of GTIs [s]
livetime	38472.983837128	Livetime [s]
ontime2	38963.158864558	Sum of GTIs [s]
ontime3	38966.399854839	Sum of GTIs [s]
ontime4	38963.158884555	Sum of GTIs [s]
ontime6	38966.399854839	Sum of GTIs [s]
ontime7	38966.399854839	Sum of GTIs [s]
ontime8	38966.399854839	Sum of GTIs [s]
l2events	329206	Number of level 2 events



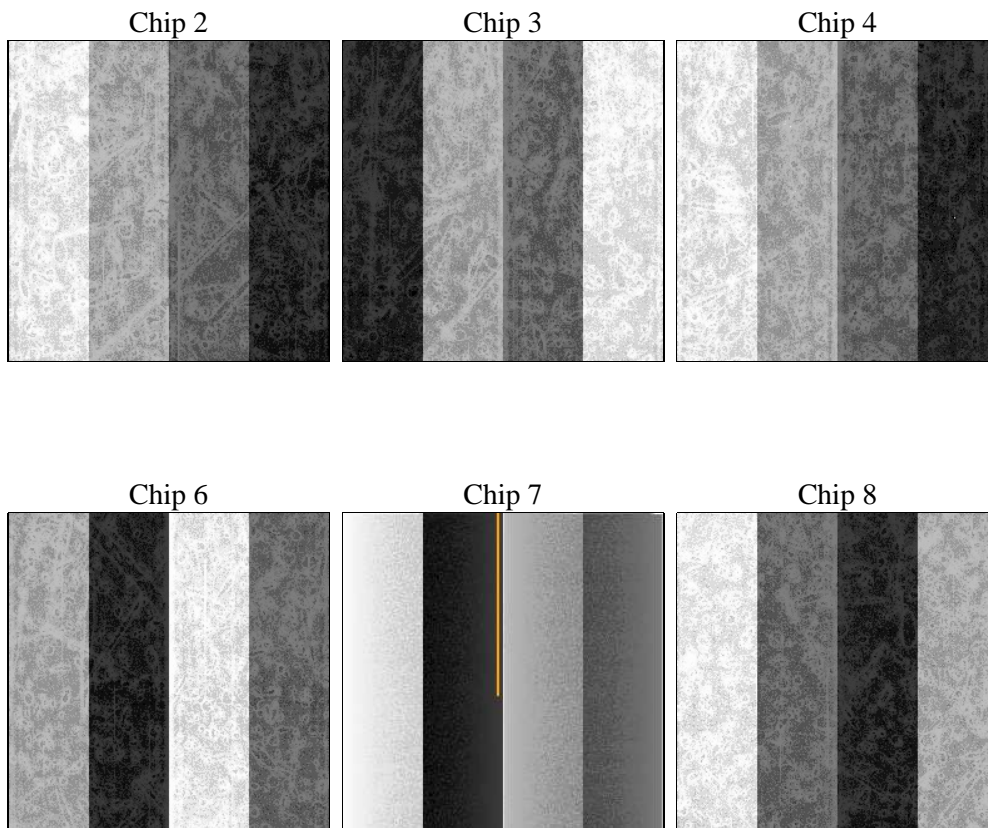
2 OBI

2.1 OBI

2.1.1 Images



2.1.2 Bias



2.1.3 Parameters

obi_num	2	Obi number	sched_exp_time	38787.489000	[s] Scheduled observation exposure time
ascdsver	8.5.1.1	Processing system revision	ontime	38966.399854839	Sum of GTIs [s]
caldsver	4.5.5	 	ontime2	38963.158864558	Sum of GTIs [s]
date	2012-12-25T05:30:29	Date and time of file creation	ontime3	38966.399854839	Sum of GTIs [s]
revision	3	Processing version of data	ontime4	38963.158884555	Sum of GTIs [s]
			ontime6	38966.399854839	Sum of GTIs [s]
			ontime7	38966.399854839	Sum of GTIs [s]
			ontime8	38966.399854839	Sum of GTIs [s]
			l1events	1769912	Number of level 1 events

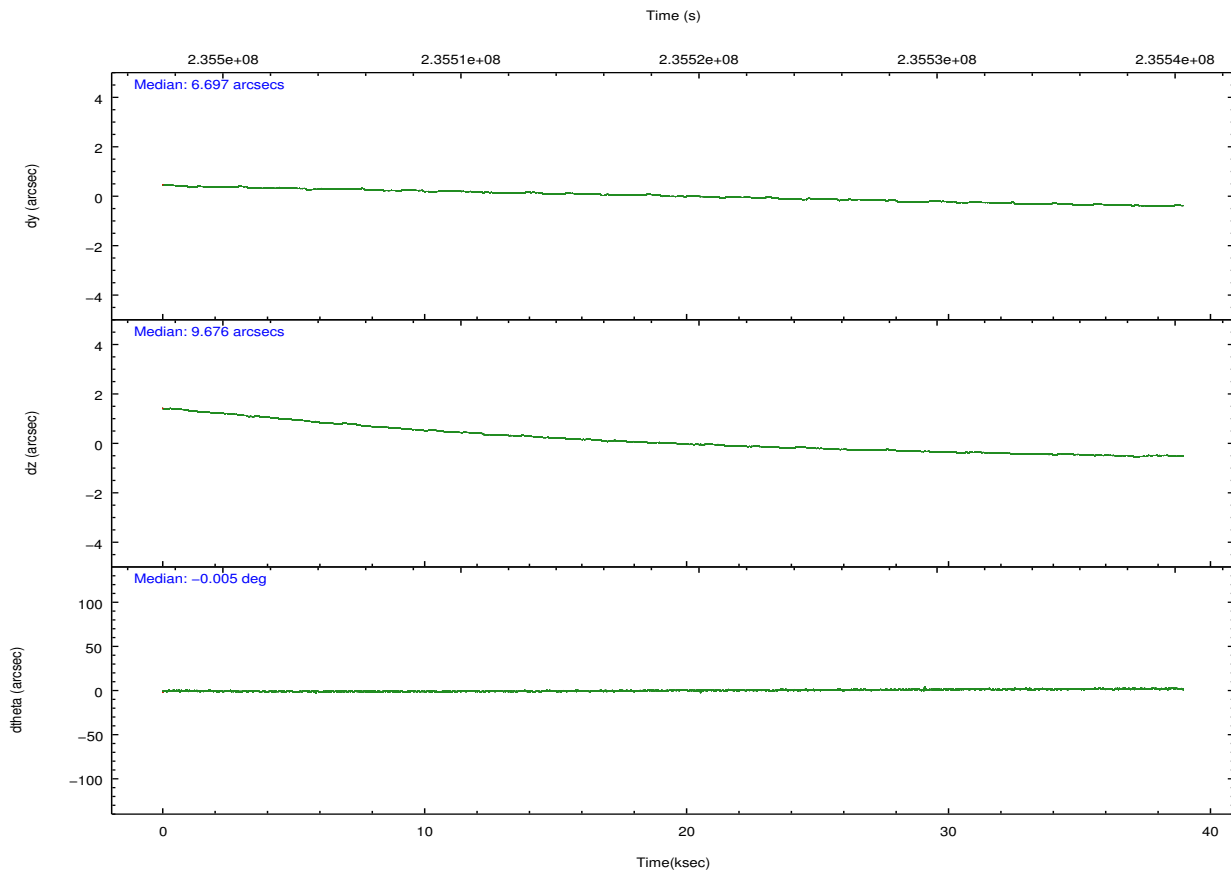
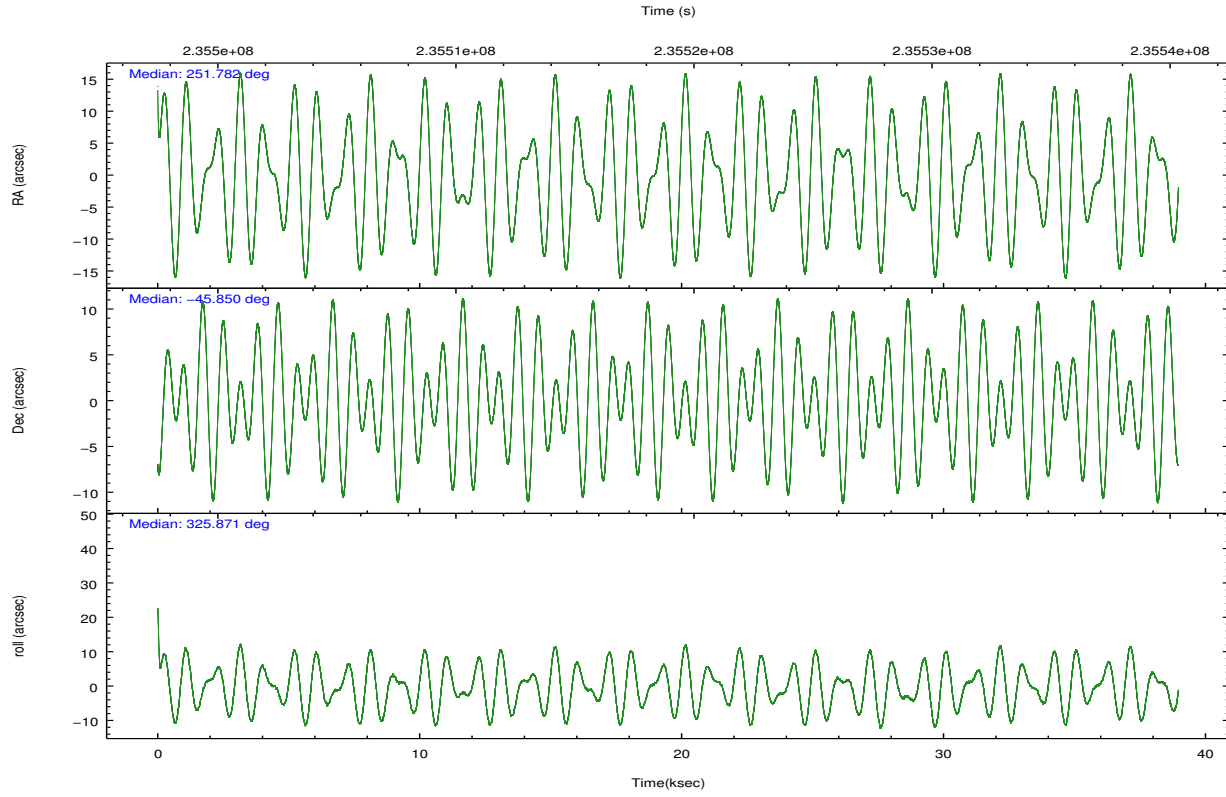
2.1.4 Events

	ccd 2	ccd 3	ccd 4	ccd 6	ccd 7	ccd 8		ccd 2	ccd 3	ccd 4	ccd 6	ccd 7	ccd 8
level 1 events	265063	251264	300723	262675	311063	379124	grade 0 events	13032	14720	23794	15861	17915	68607
rejected events	235892	219645	261064	229782	156759	247566		4%	5%	7%	6%	5%	18%
rejected %	88%	87%	86%	87%	50%	65%	grade 1 events	154	161	337	282	254	965
								0%	0%	0%	0%	0%	0%
							grade 2 events	6325	6110	6778	6776	33281	25053
								2%	2%	2%	2%	10%	6%
							grade 3 events	2836	2999	3077	3220	15316	10920
								1%	1%	1%	1%	4%	2%
							grade 4 events	2895	3118	3018	3250	15462	10319
								1%	1%	1%	1%	4%	2%
							grade 5 events	7945	9771	9672	10172	29707	15230
								2%	3%	3%	3%	9%	4%
							grade 6 events	4642	5227	4682	6087	76897	23195
								1%	2%	1%	2%	24%	6%
							grade 7 events	227234	209158	249365	217027	122231	224835
								85%	83%	82%	82%	39%	59%

2.2 Compared Parameters

Parameter	Planned	Actual	Parameter	Planned	Actual
Instrument	ACIS	ACIS	Obspar format version number	7	7
Detector	ACIS-234678	ACIS-234678	Obspar file type	PREDICTED	ACTUAL
Grating	NONE	NONE	Obspar update status	NONE	UPDATED
Data mode	FAINT	FAINT	Number of optional ACIS chips dropped	0	0
Observation mode	POINTING	POINTING	On-chip summing requested	N	N
[deg] Pointing RA	251.743420	251.7824657120943	Subarray requested	NONE	NONE
[deg] Pointing Dec	-45.848676	-45.8502746993801	Alternating exposures requested	N	N
[deg] Pointing Roll	325.696634	325.8812830806906	[s] Primary exposure time	0.000000	3.2
[mm] SIM focus pos	-0.684267	-0.6828225247311905			
[mm] SIM defocus	0	0.001444936568705701			
[mm] SIM translation stage pos	-190.132523	-190.1425803651734			
[mm] SIM translation stage offset	0	0.01005778216563158			
[s] Observation start time (MET)	235499607.184000	235498170.2983			
Observation start date	2005-06-18T16:32:23	2005-06-18T16:09:30			
[s] Observation end time (MET)	235538394.184000	235538618.33765			
Observation end date	2005-06-19T03:18:50	2005-06-19T03:23:38			
Read mode	TIMED	TIMED			

2.3 Aspect

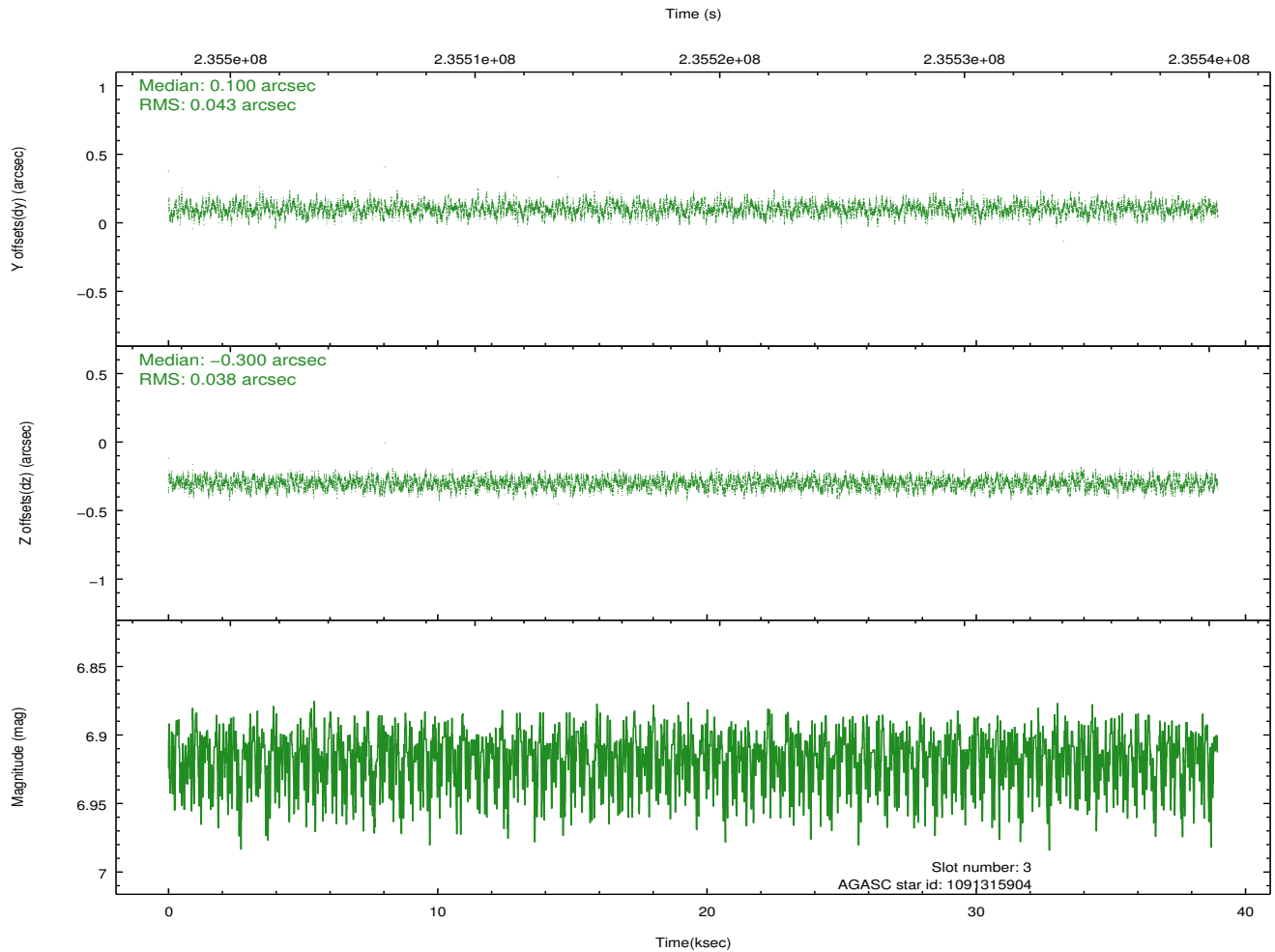
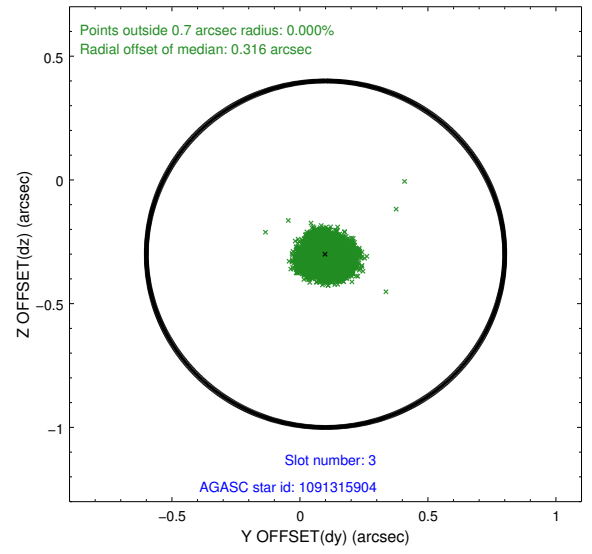
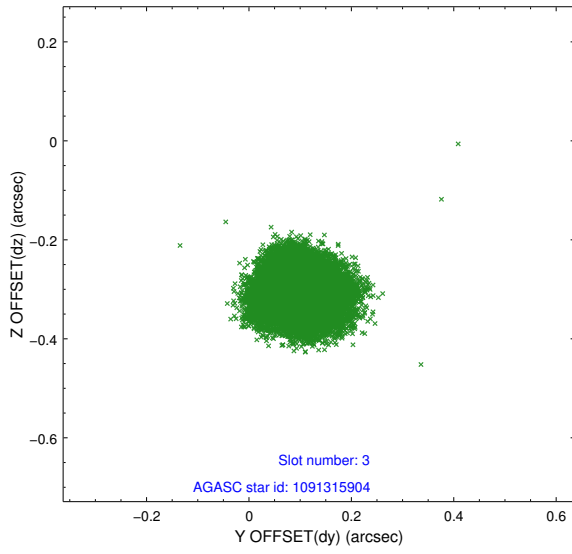


Slot Statistics

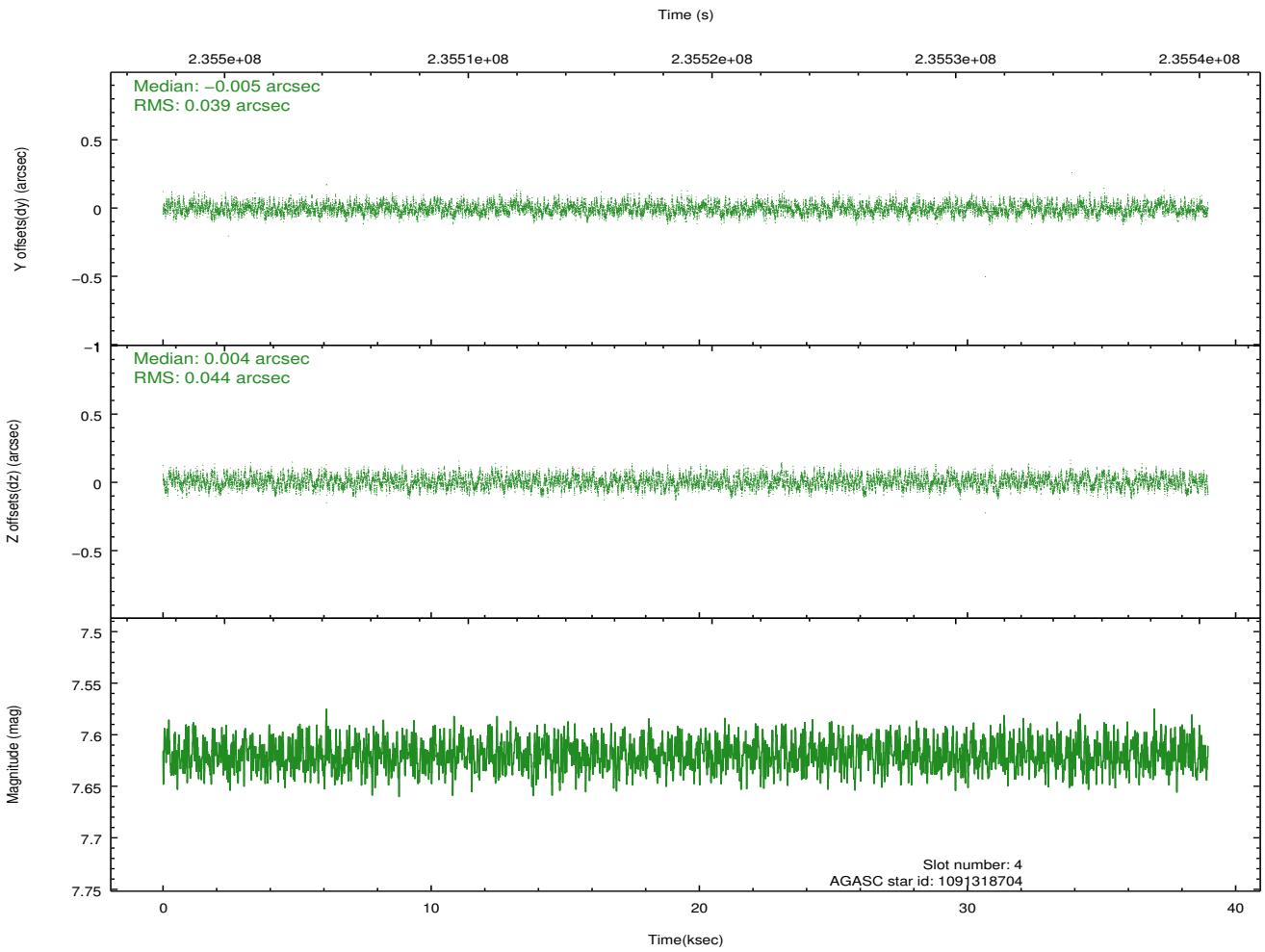
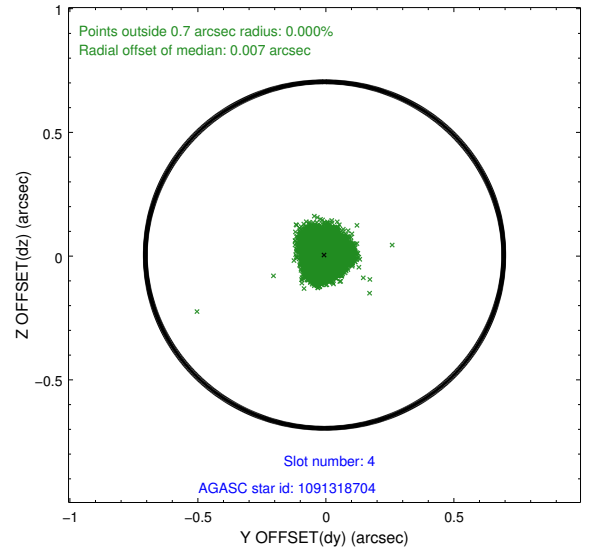
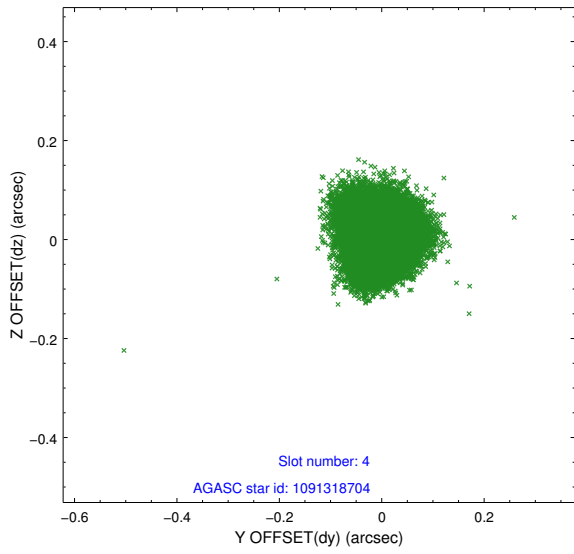
slot	status	id	mag	n_pts	med_dy	med_dz	dr1	dr2	ra	dec	mean_y	mean_z
0	FID	ACIS-S-2	7.10	9506	-0.077	-0.053	0.007	0.013	0.000000	0.000000	-759.51	-1731.08
1	FID	ACIS-S-4	7.21	9506	0.069	0.041	0.011	0.018	0.000000	0.000000	2153.89	177.50
2	FID	ACIS-S-6	7.35	9506	-0.020	0.020	0.014	0.024	0.000000	0.000000	402.54	814.89
3	GUIDE	1091315904	6.92	19010	0.100	-0.300	0.062	0.096	252.023077	-45.944918	774.58	107.20
4	GUIDE	1091318704	7.62	19008	-0.005	0.004	0.063	0.096	251.955714	-45.390313	-486.21	1664.97
5	GUIDE	1091321136	8.53	19005	-0.046	0.035	0.059	0.098	252.629031	-45.865288	1874.46	1192.15
6	GUIDE	1091321752	6.96	18942	-0.024	0.142	0.048	0.079	251.516776	-46.486101	830.39	-2212.50
7	GUIDE	1091343368	6.92	19010	-0.036	0.125	0.060	0.109	251.526552	-46.531998	943.92	-2335.34

2.4 Star Slots

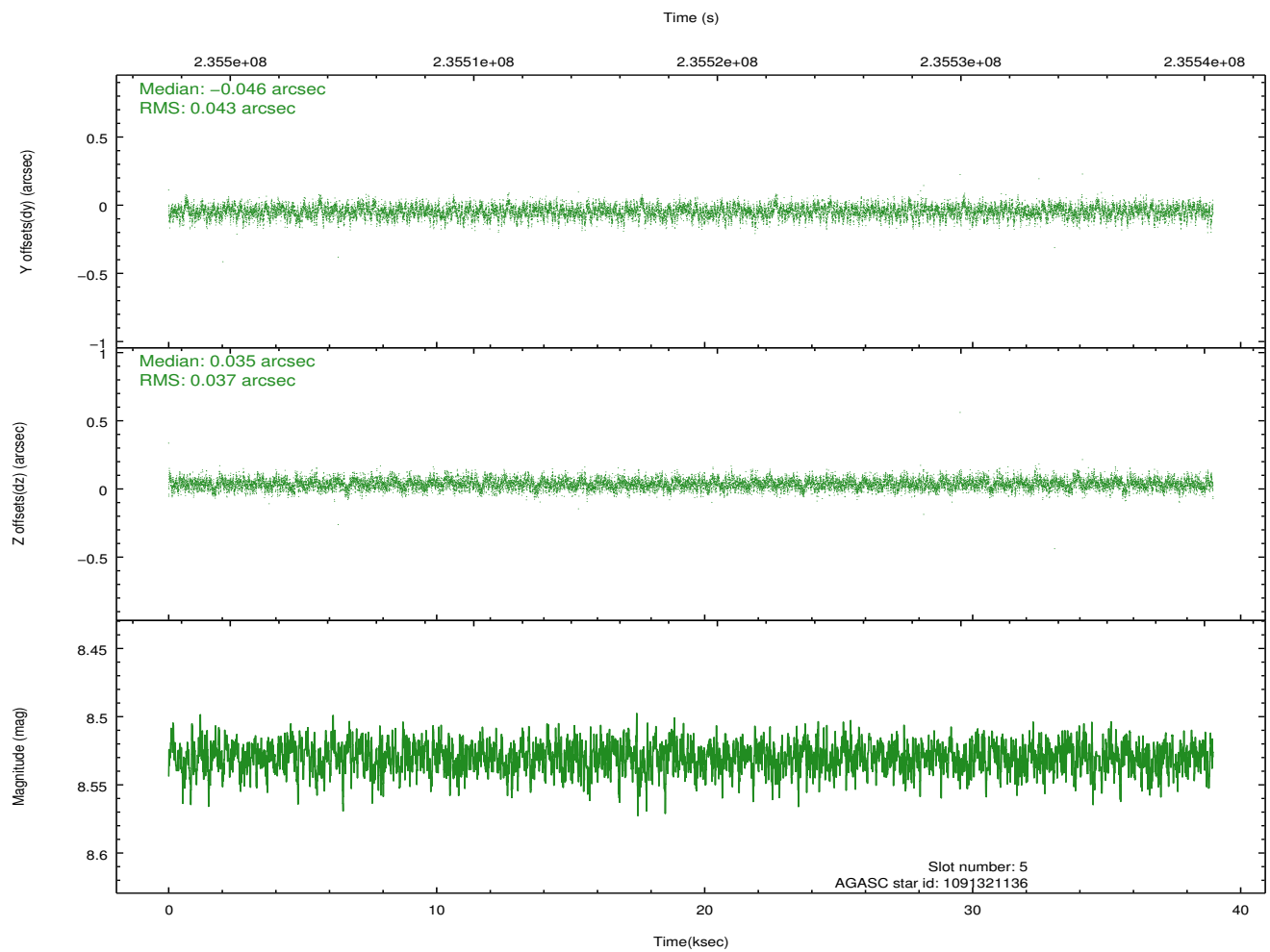
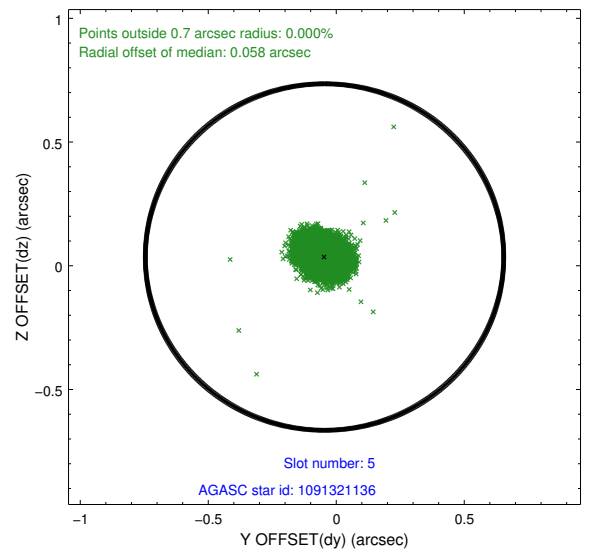
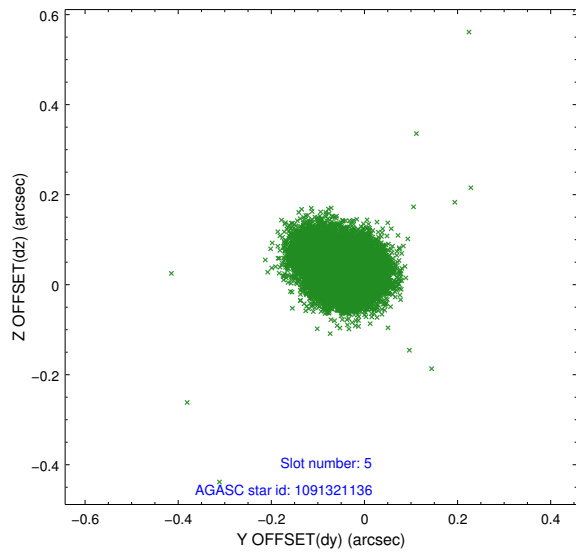
2.4.1 Slot 3



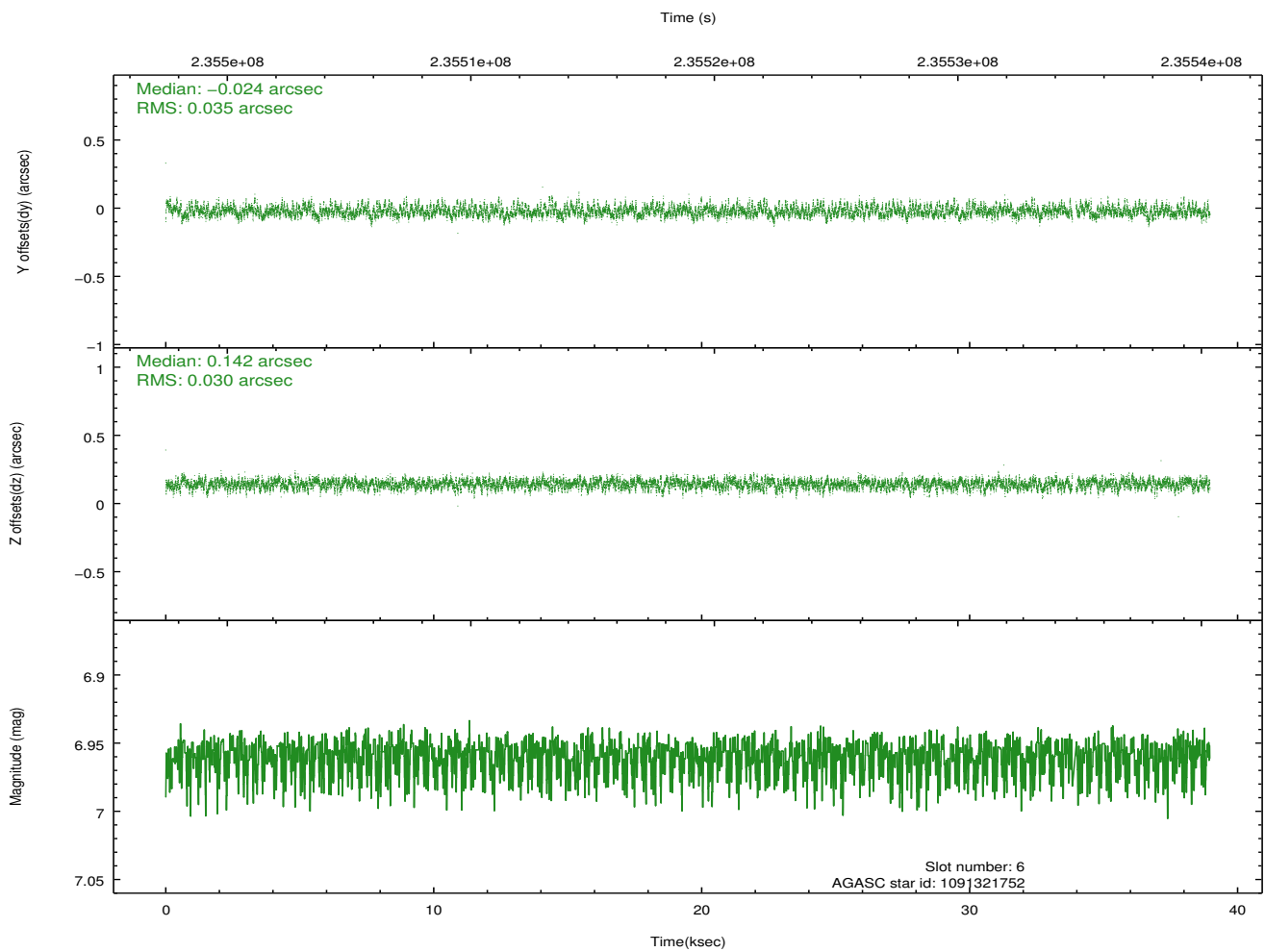
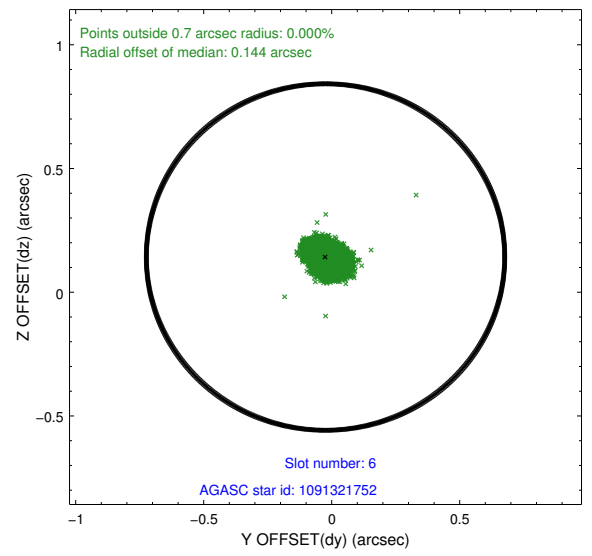
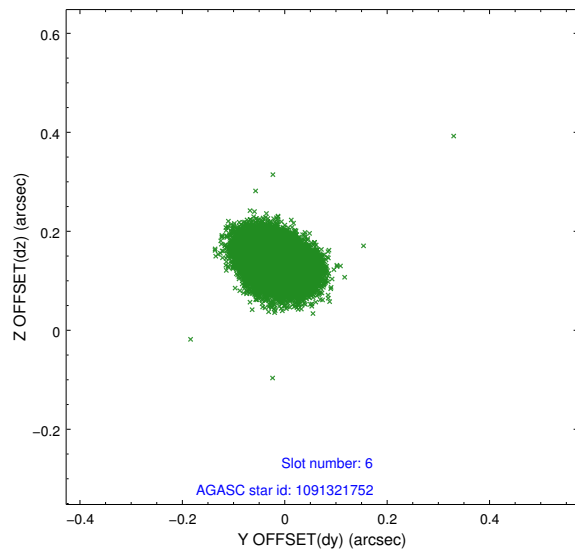
2.4.2 Slot 4



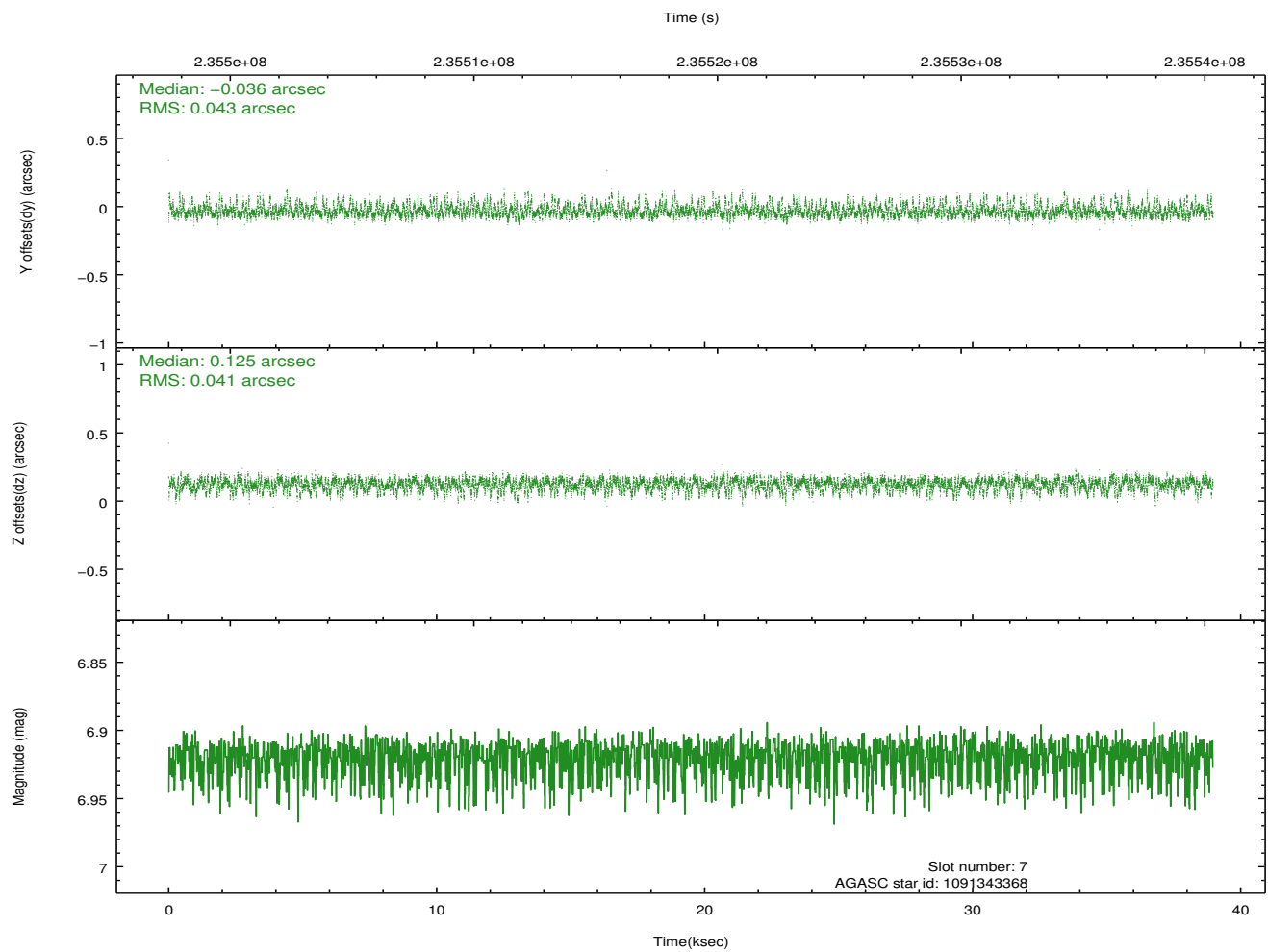
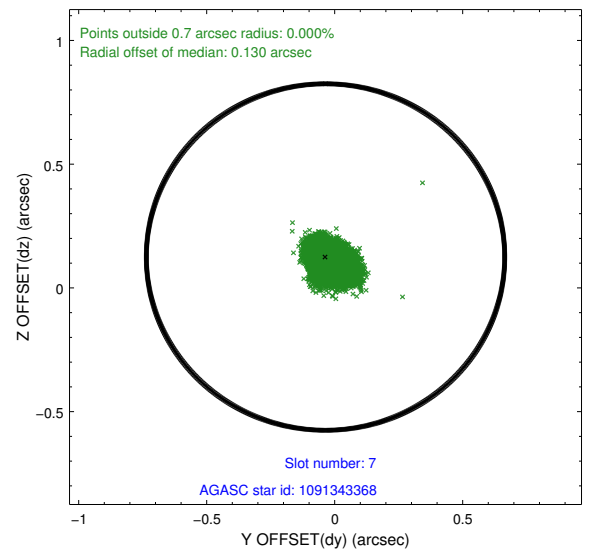
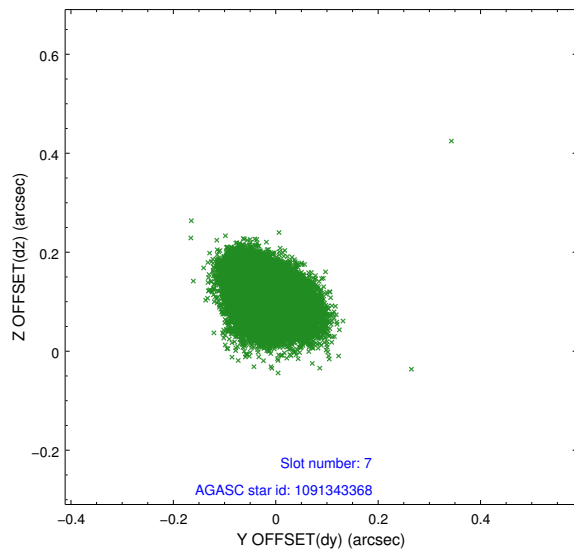
2.4.3 Slot 5



2.4.4 Slot 6

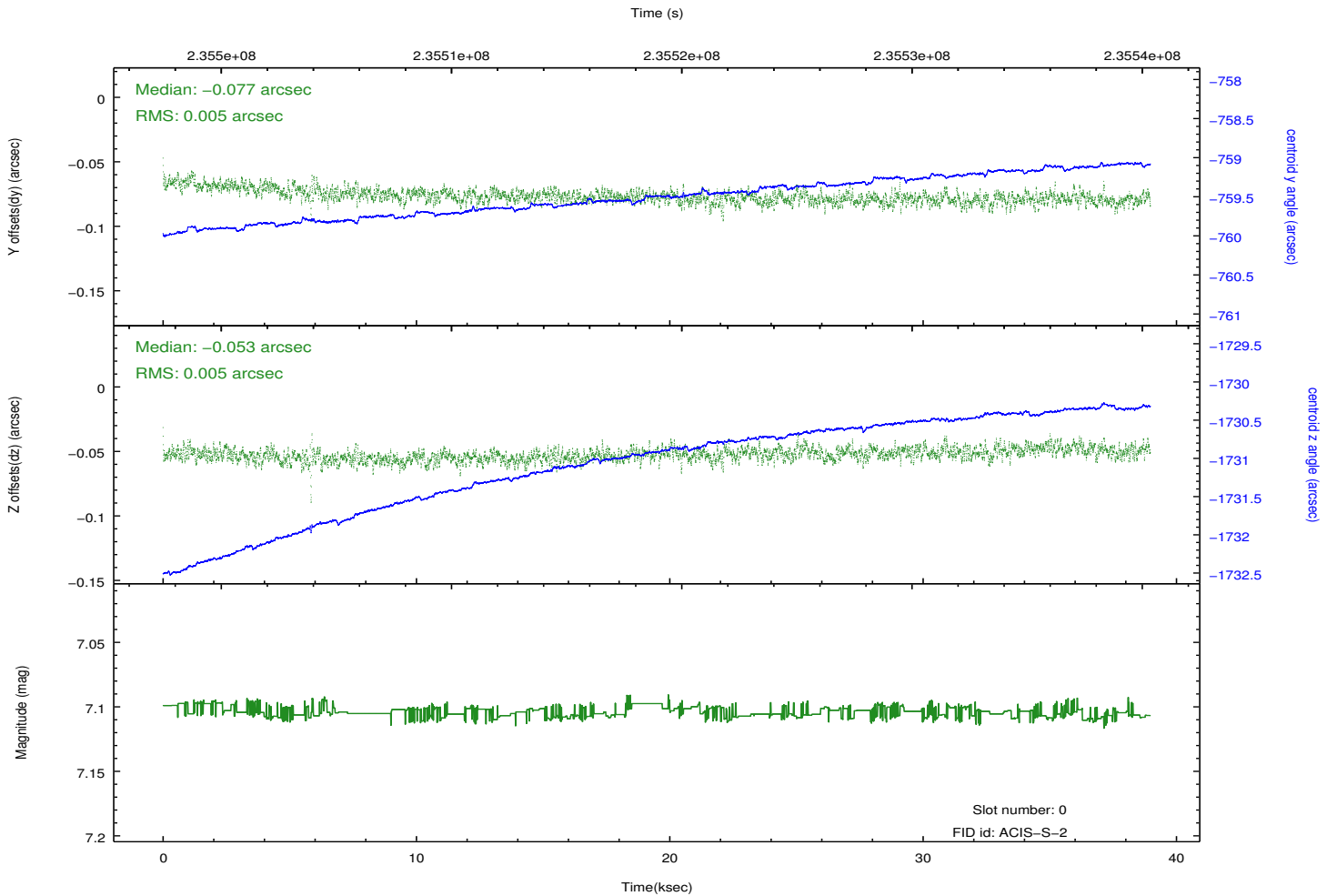
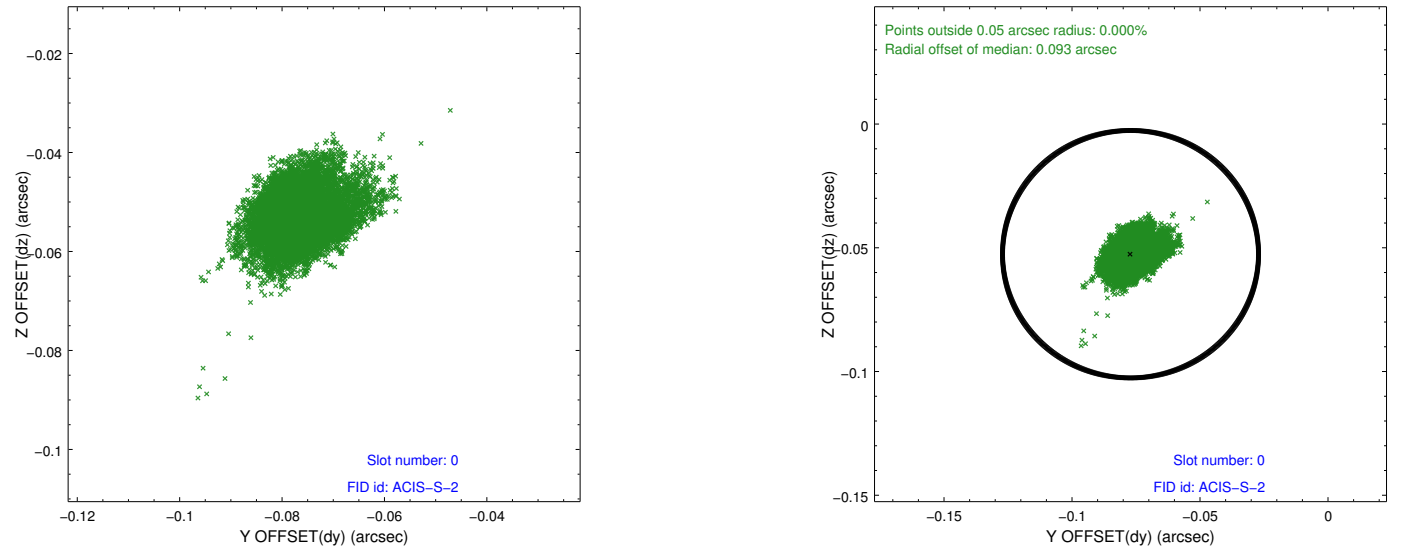


2.4.5 Slot 7

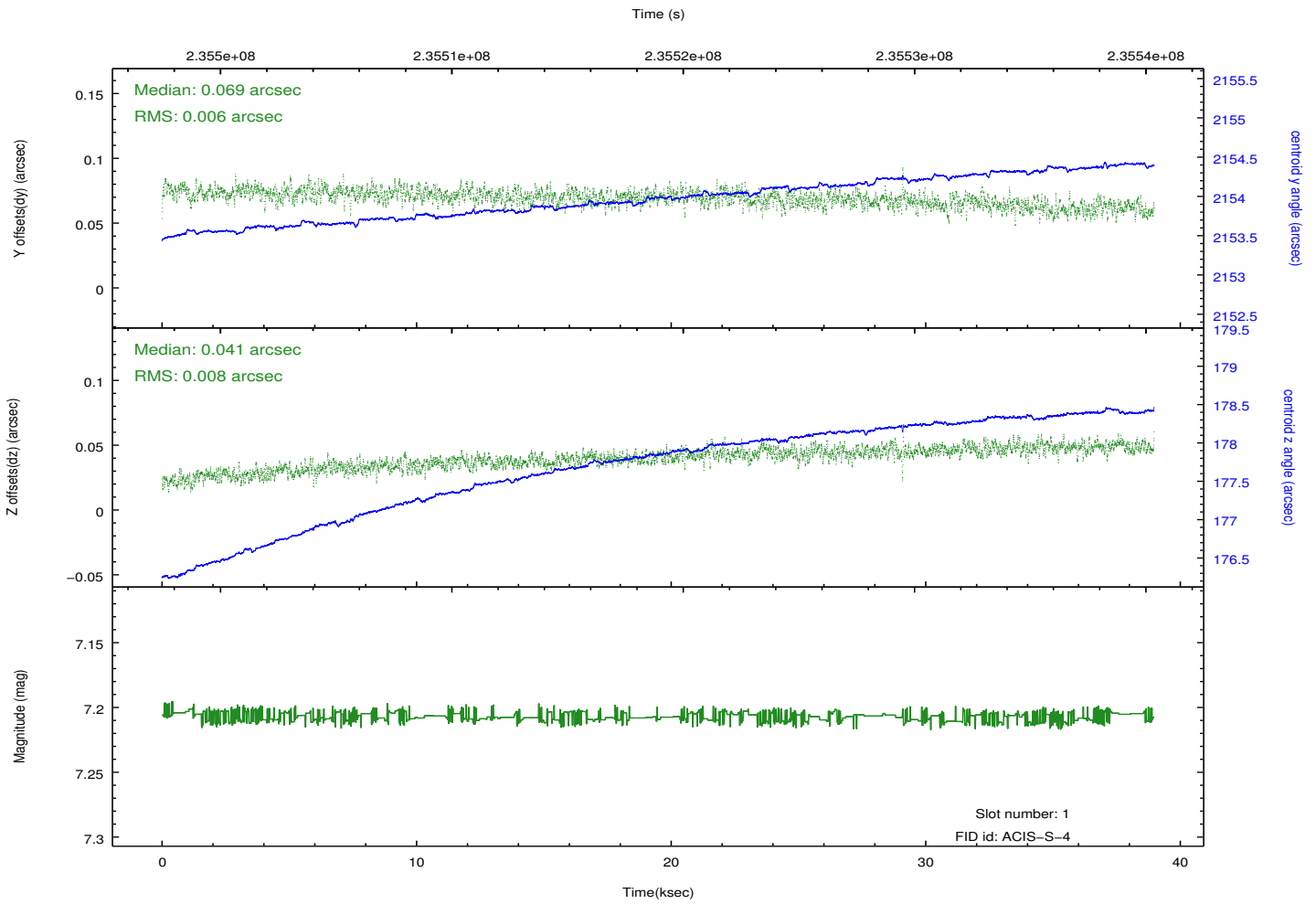
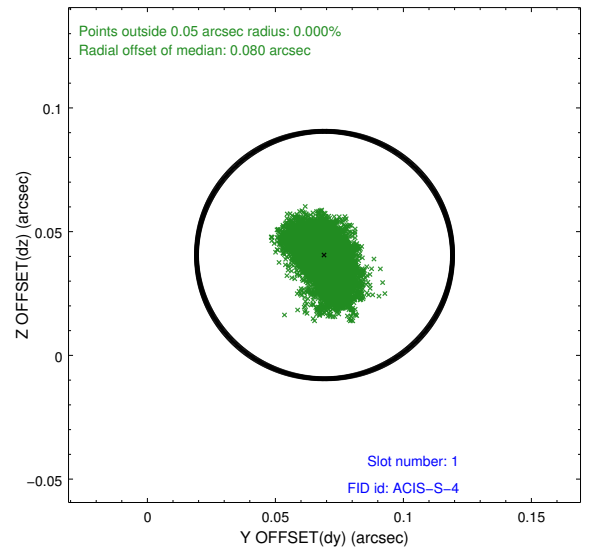
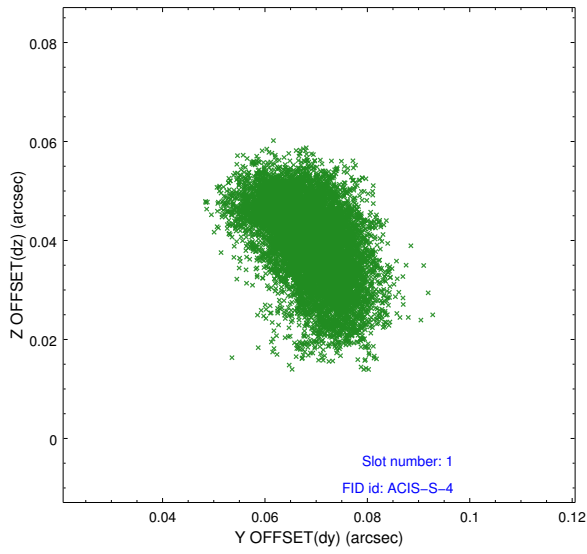


2.5 FID Slots

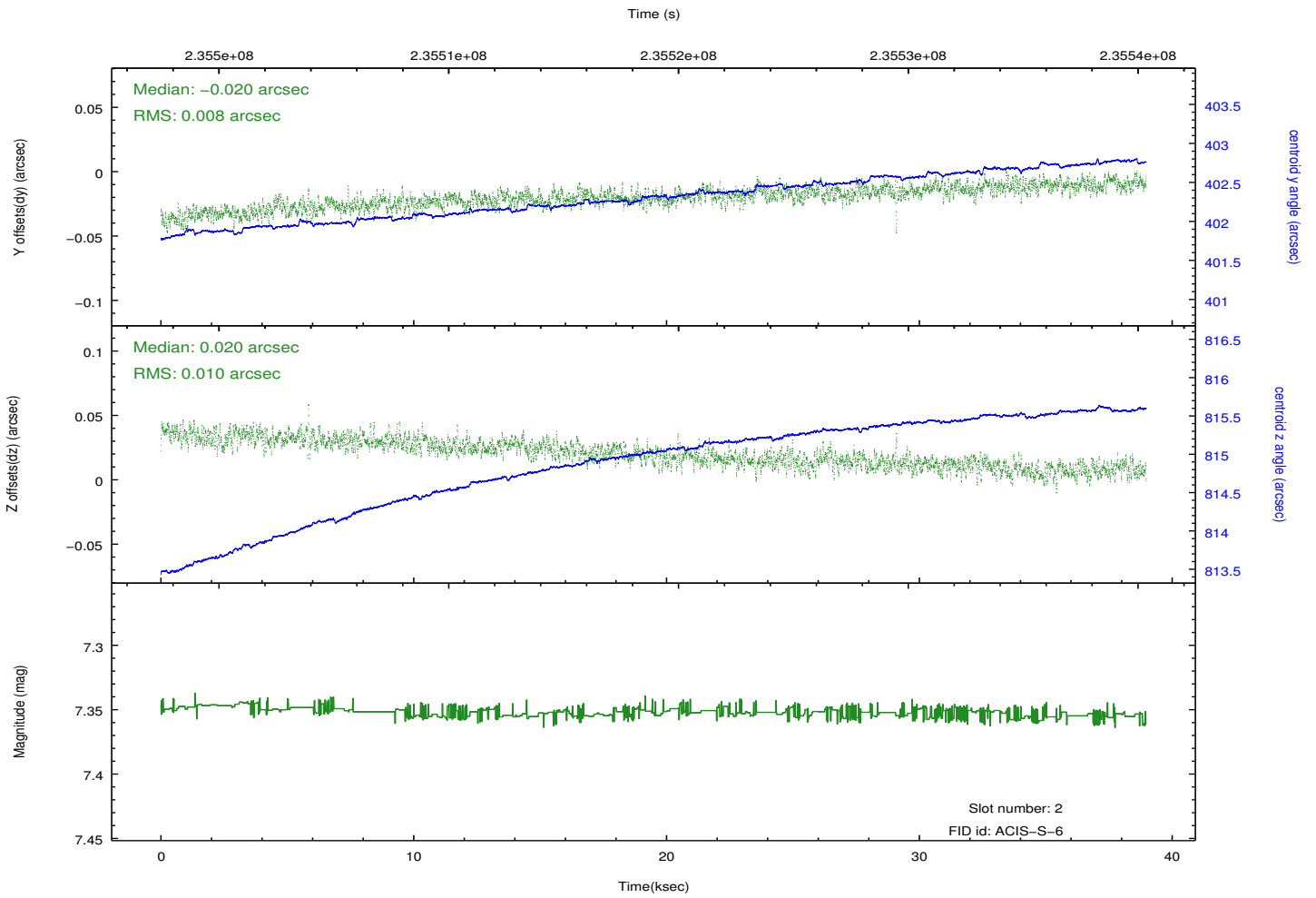
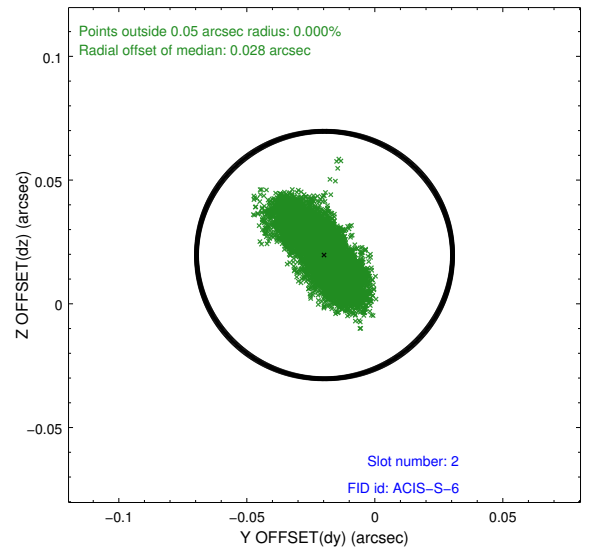
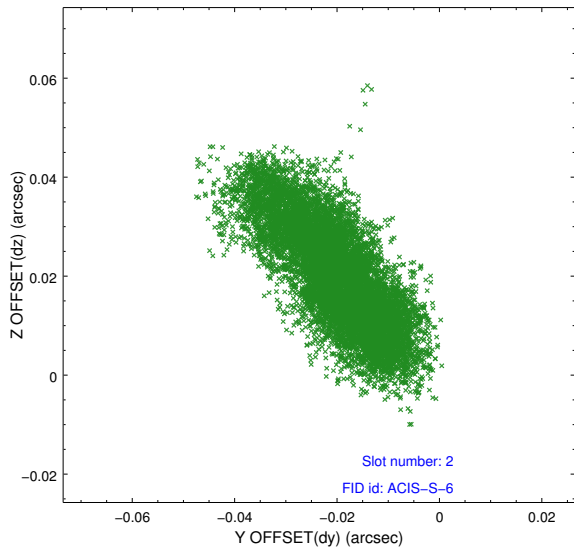
2.5.1 Slot 0



2.5.2 Slot 1



2.5.3 Slot 2



A Summary

A.1 Status

V&V Scientist	Jen Lauer
V&V Date (YYYY-MM-DD)	2013.01.17
V&V Edition	1
V&V Disposition and Status	OK
V&V Charge Time	38.96639

A.2 Comments