

V&V Reference Report

L2 ASCDS Version : 8.4.5

Observation 551 - L2 Version 4
Chandra X-Ray Center

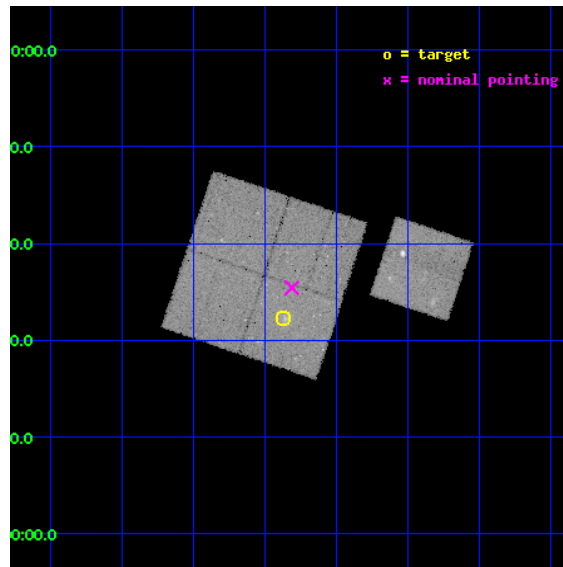
L2 Processing Date : Aug 27 2012

Contents

1	Front	2
2	OBI	3
2.1	OBI	3
2.1.1	Images	3
2.1.2	Bias	3
2.1.3	Parameters	4
2.1.4	Events	4
2.2	Compared Parameters	5
2.3	Aspect	6
2.4	Star Slots	9
2.4.1	Slot 3	9
2.4.2	Slot 4	10
2.4.3	Slot 5	11
2.4.4	Slot 6	12
2.4.5	Slot 7	13
2.5	FID Slots	14
2.5.1	Slot 0	14
2.5.2	Slot 1	15
2.5.3	Slot 2	16
A	Summary	17
A.1	Status	17
A.2	Comments	17

1 Front

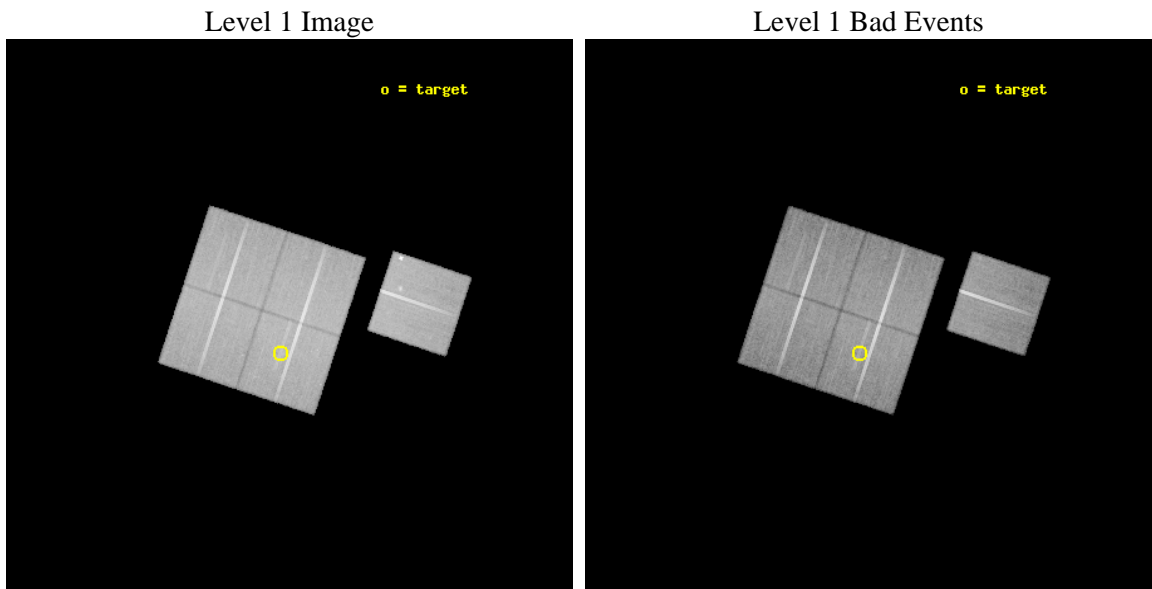
seq_num	800059	Sequence number
obs_id	551	Observation id
title	DETERMINATION OF H0/Q0	Proposal title
observer	DR. LEON VANSPEYBROECK	Principal investigator
object	MS 2053.7-0449	Source name
dtcycle	0	
cycle	P	events from which exps? Prim/Second/Both
ra_targ	314.092917	Observer's specified target RA [deg]
dec_targ	-4.629	Observer's specified target Dec [deg]
ra_nom	314.07767861239	Nominal RA [deg]
dec_nom	-4.576523356145	Nominal Dec [deg]
roll_nom	108.39056026238	Nominal Roll [deg]
revision	4	Processing version of data
ontime	44915.200041816	Sum of GTIs [s]
livetime	44346.4567342	Livetime [s]
ontime0	44911.95908159	Sum of GTIs [s]
ontime1	44915.200041816	Sum of GTIs [s]
ontime2	44915.200041816	Sum of GTIs [s]
ontime3	44915.200041816	Sum of GTIs [s]
ontime6	44915.200041816	Sum of GTIs [s]
l2events	151569	Number of level 2 events



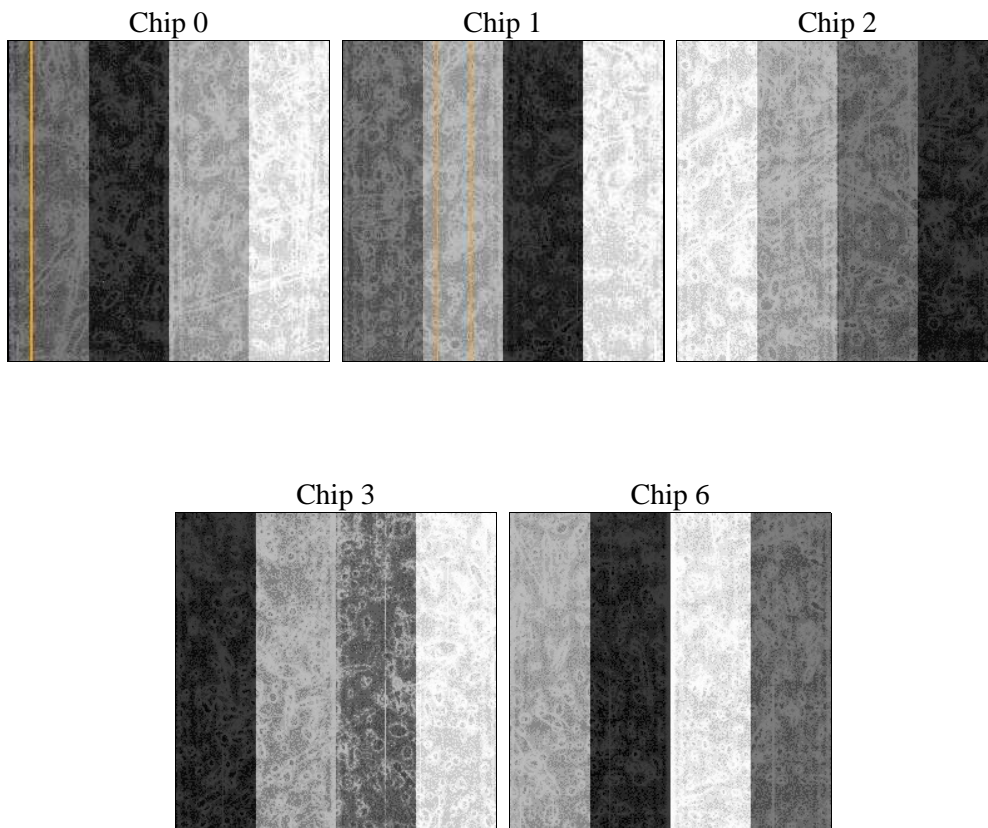
2 OBI

2.1 OBI

2.1.1 Images



2.1.2 Bias



2.1.3 Parameters

obi_num	0	Obi number	sched_exp_time	44710.280000	[s] Scheduled observation exposure time
ascdsver	8.4.5	Processing system revision	ontime	44915.200041816	Sum of GTIs [s]
caldbver	4.5.1.1	 	ontime0	44911.95908159	Sum of GTIs [s]
date	2012-08-27T19:42:55	Date and time of file creation	ontime1	44915.200041816	Sum of GTIs [s]
revision	4	Processing version of data	ontime2	44915.200041816	Sum of GTIs [s]
			ontime3	44915.200041816	Sum of GTIs [s]
			ontime6	44915.200041816	Sum of GTIs [s]
			l1events	1556491	Number of level 1 events

2.1.4 Events

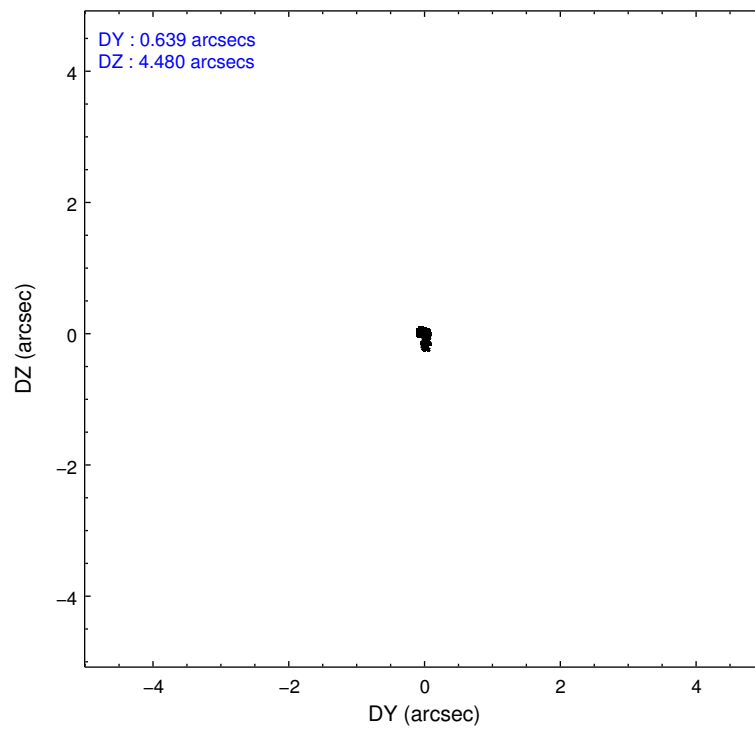
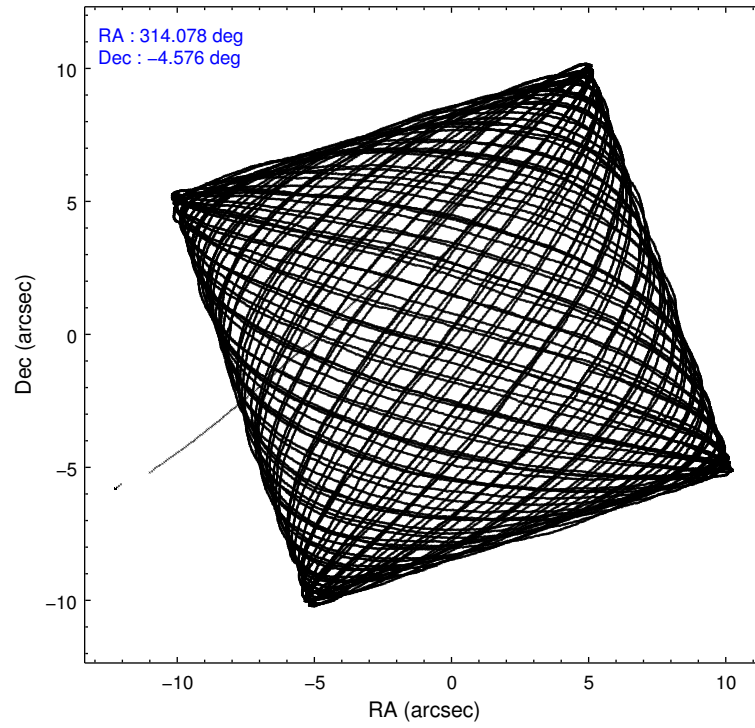
	ccd 0	ccd 1	ccd 2	ccd 3	ccd 6
level 1 events	291906	292884	326818	322089	322794
rejected events	256894	256457	292559	285929	281481
rejected %	88%	87%	89%	88%	87%

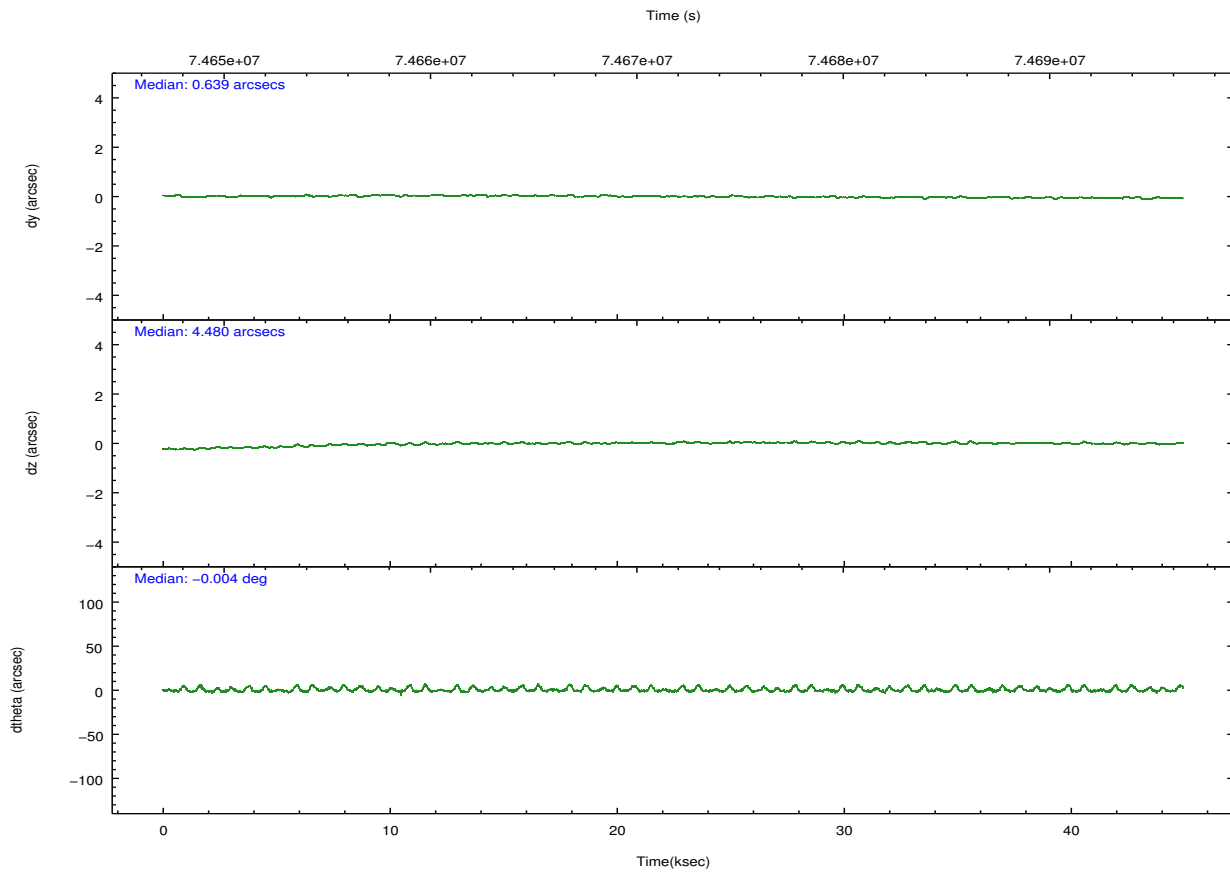
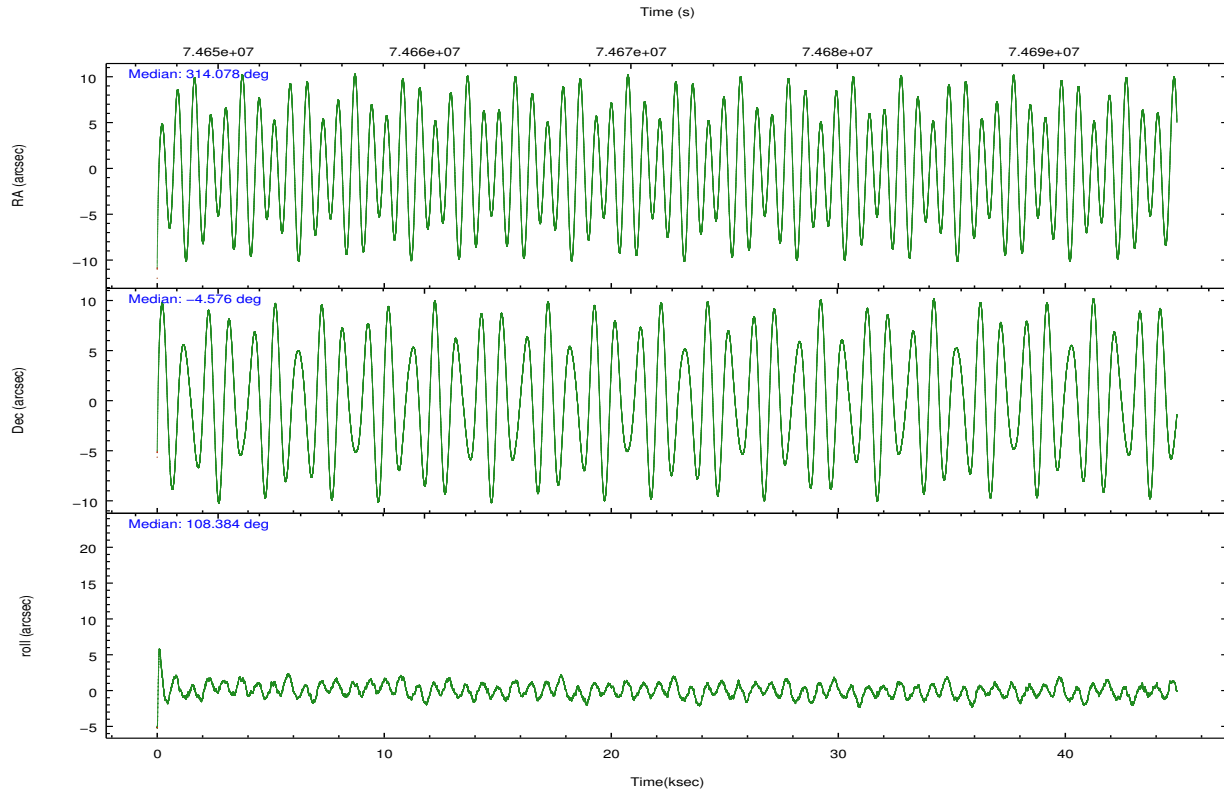
	ccd 0	ccd 1	ccd 2	ccd 3	ccd 6
grade 0 events	15372	15210	14968	16838	16399
	5%	5%	4%	5%	5%
grade 1 events	138	122	148	155	127
	0%	0%	0%	0%	0%
grade 2 events	7234	7069	7158	6771	11594
	2%	2%	2%	2%	3%
grade 3 events	3398	3799	3314	3384	3498
	1%	1%	1%	1%	1%
grade 4 events	3255	3772	3234	3361	3467
	1%	1%	0%	1%	1%
grade 5 events	9938	10683	9573	10631	11432
	3%	3%	2%	3%	3%
grade 6 events	5869	6694	5684	5898	6476
	2%	2%	1%	1%	2%
grade 7 events	246702	245535	282739	275051	269801
	84%	83%	86%	85%	83%

2.2 Compared Parameters

Parameter	Planned	Actual	Parameter	Planned	Actual
Instrument	ACIS	ACIS	Obspar format version number	7	7
Detector	ACIS-01236	ACIS-01236	Obspar file type	PREDICTED	ACTUAL
Grating	NONE	NONE	Obspar update status	NONE	UPDATED
Data mode	FAINT	FAINT	Number of optional ACIS chips dropped	0	0
Observation mode	POINTING	POINTING	On-chip summing requested	N	N
[deg] Pointing RA	314.098246	314.0776786123917	Subarray requested	NONE	NONE
[deg] Pointing Dec	-4.594975	-4.576523356144998	Alternating exposures requested	N	N
[deg] Pointing Roll	108.183522	108.3905602623792	[s] Primary exposure time	0.000000	3.2
[mm] SIM focus pos	-0.782348	-0.7809083437167272			
[mm] SIM defocus	0	0.001439871863259334			
[mm] SIM translation stage pos	-225.840463	-225.8433433320239			
[mm] SIM translation stage offset	-7.752	-7.749109670905796			
[s] Observation start time (MET)	74649507.184000	74648364.787049			
Observation start date	2000-05-13T23:57:23	2000-05-13T23:39:24			
[s] Observation end time (MET)	74694217.184000	74694526.176245			
Observation end date	2000-05-14T12:22:33	2000-05-14T12:28:46			
Read mode	TIMED	TIMED			

2.3 Aspect



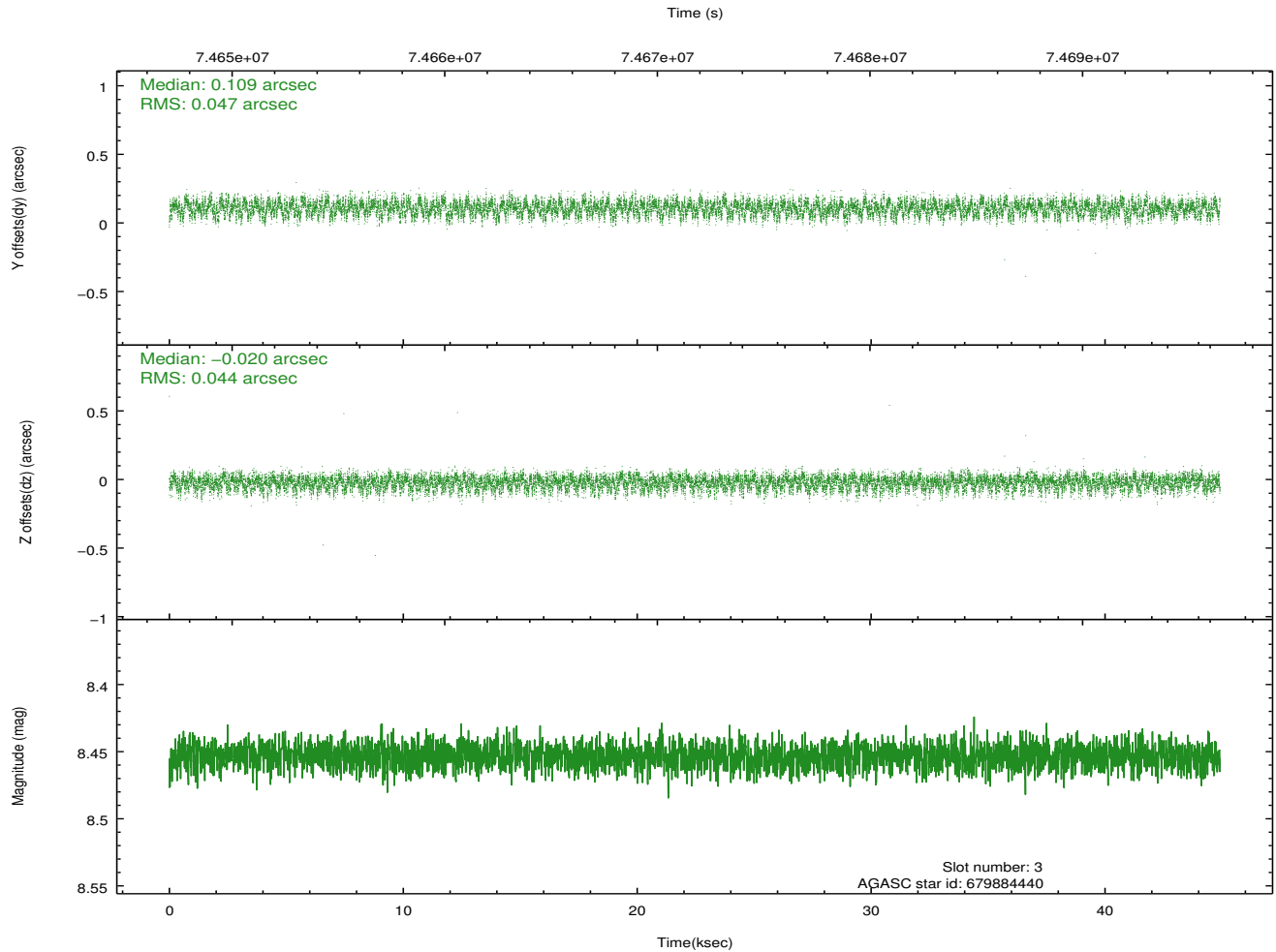
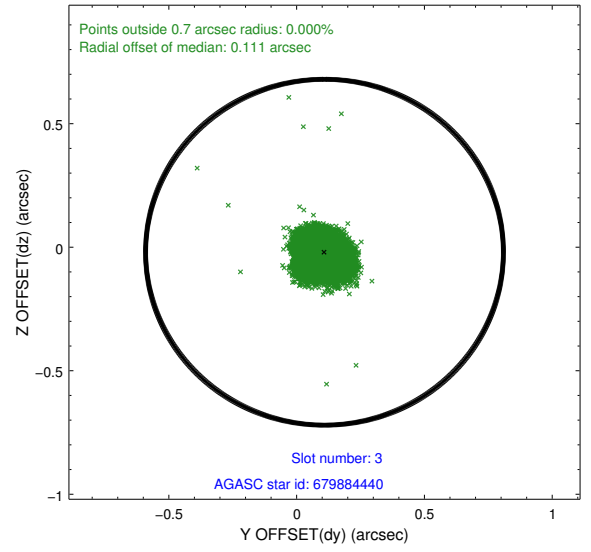
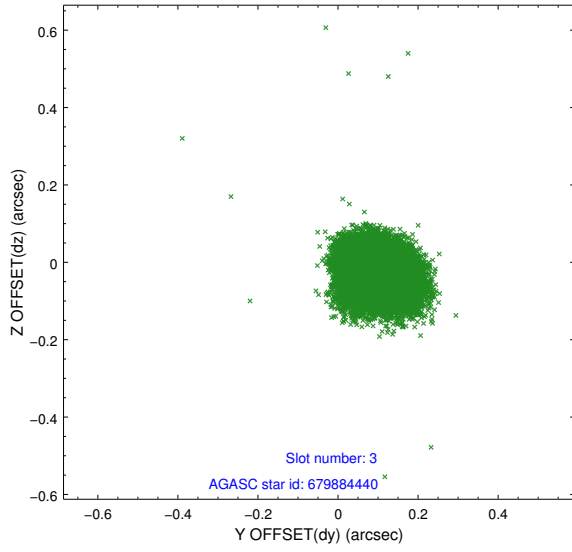


Slot Statistics

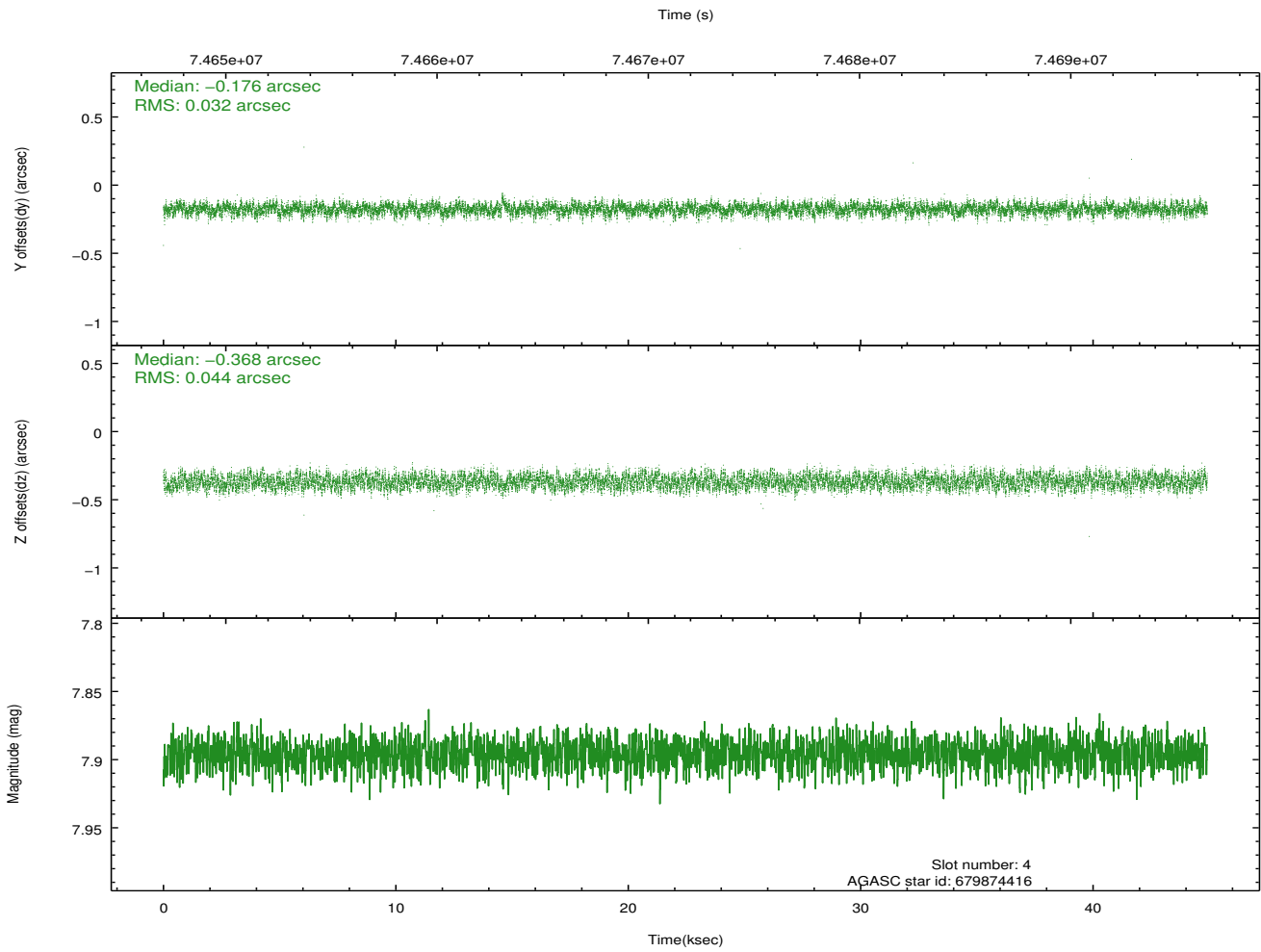
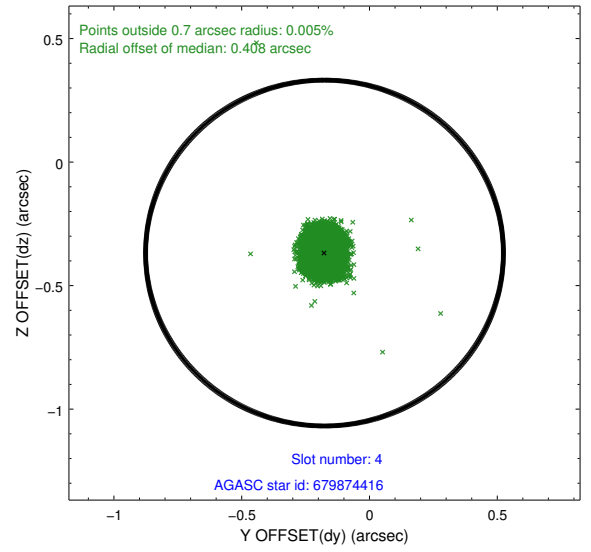
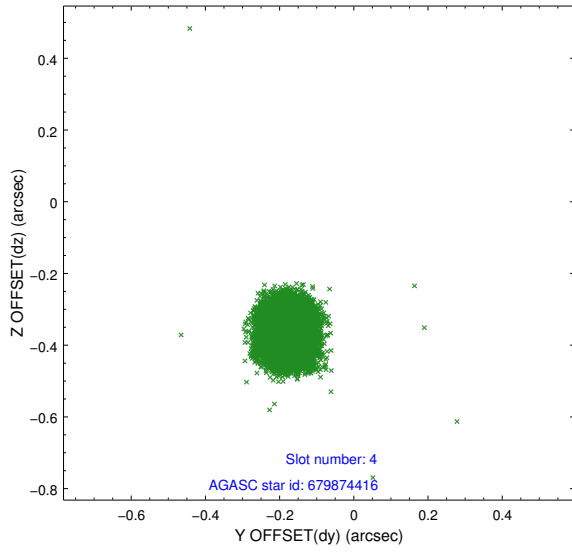
slot	status	id	mag	n_pts	med_dy	med_dz	dr1	dr2	ra	dec	mean_y	mean_z
0	FID	ACIS-I-2	7.17	10955	-0.039	-0.048	0.016	0.028	0.000000	0.000000	-755.52	-992.26
1	FID	ACIS-I-4	7.16	10952	-0.035	0.043	0.011	0.023	0.000000	0.000000	2158.47	914.00
2	FID	ACIS-I-5	7.22	10954	-0.026	0.074	0.015	0.035	0.000000	0.000000	-1808.97	910.81
3	GUIDE	679884440	8.45	21904	0.109	-0.020	0.069	0.109	314.085119	-4.911965	-1069.95	400.52
4	GUIDE	679874416	7.90	21907	-0.176	-0.368	0.058	0.091	313.462208	-4.598591	697.93	2172.33
5	GUIDE	679883352	9.17	21837	0.159	-0.065	0.068	0.110	314.167106	-4.958517	-1320.85	173.50
6	GUIDE	679877432	9.82	21895	-0.074	0.125	0.109	0.171	314.278040	-4.000274	1831.95	-1281.39
7	GUIDE	679877024	9.89	21898	-0.017	0.329	0.104	0.168	314.763892	-4.615959	-818.44	-2245.37

2.4 Star Slots

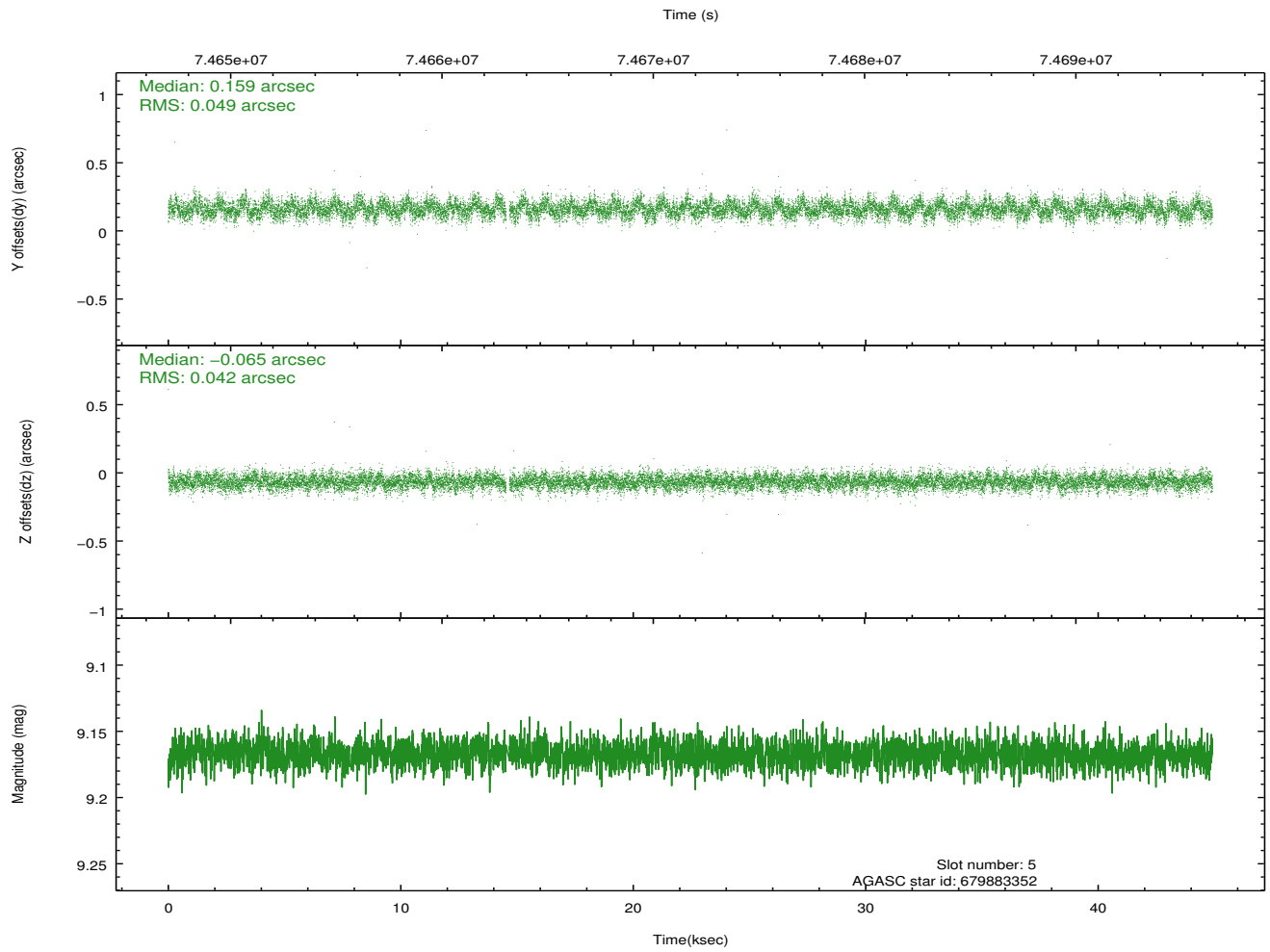
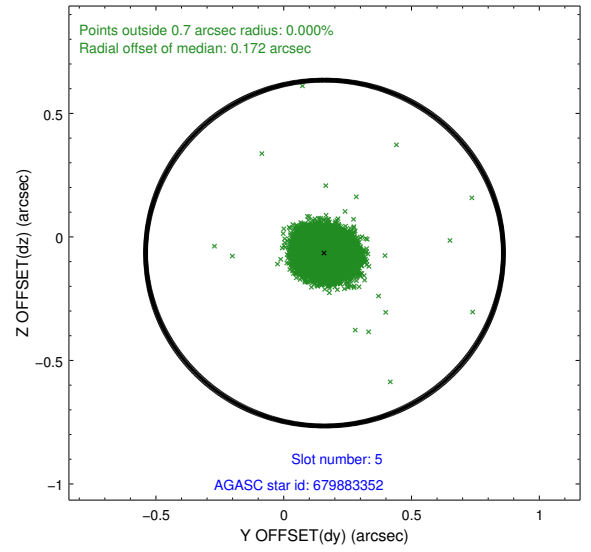
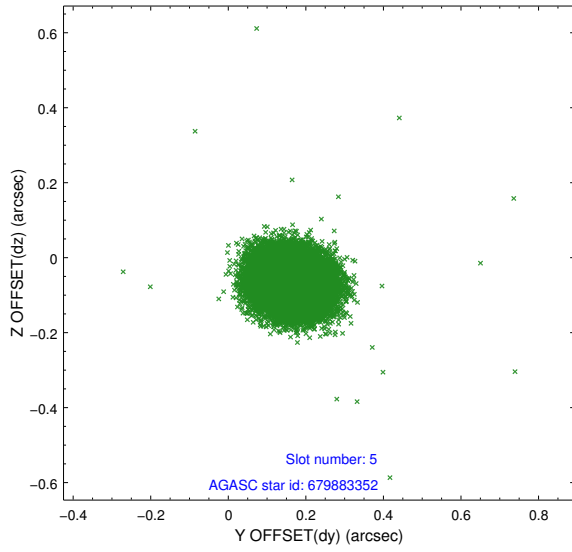
2.4.1 Slot 3



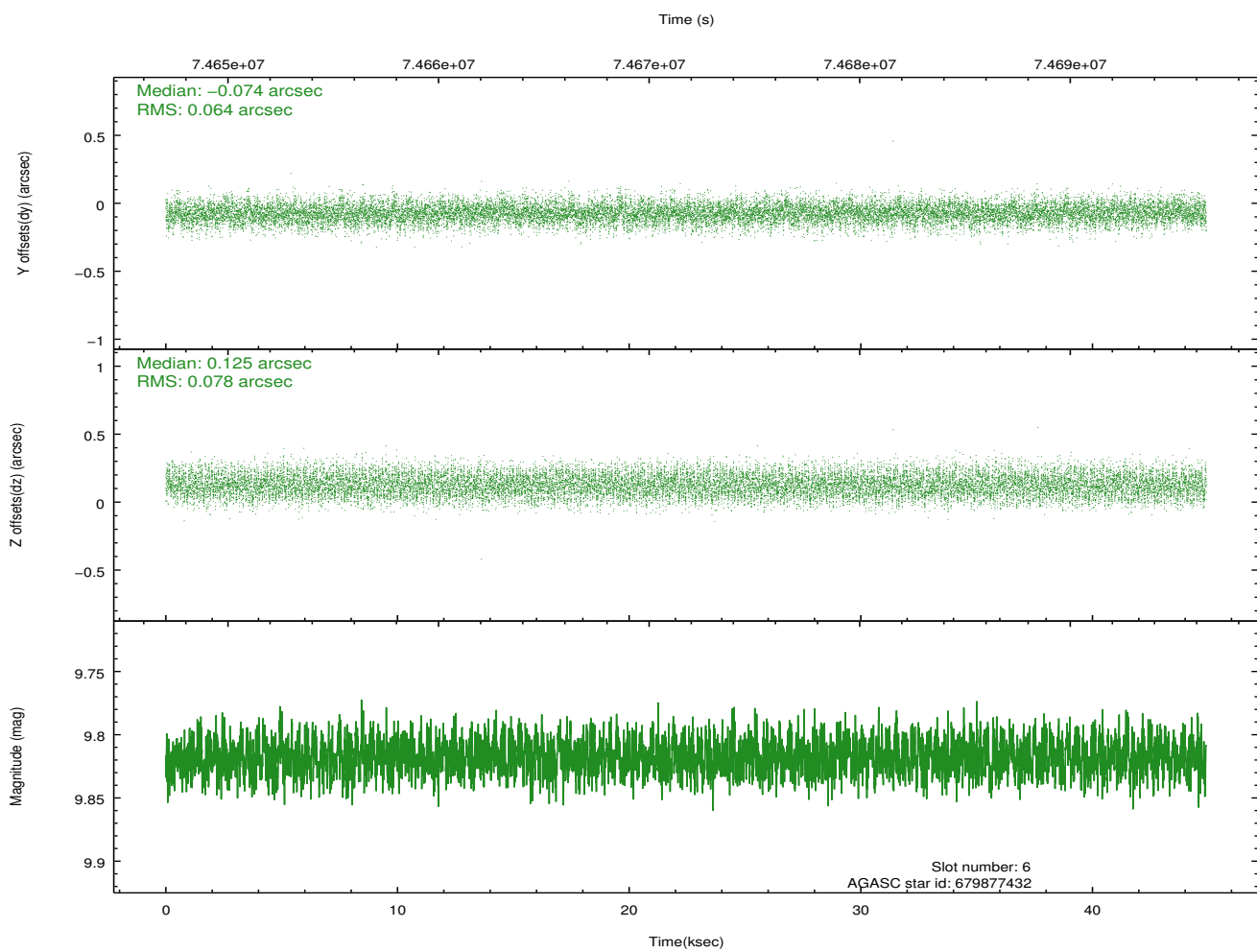
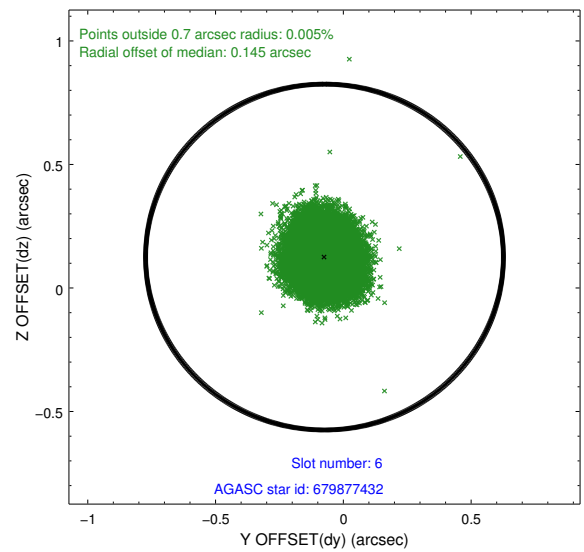
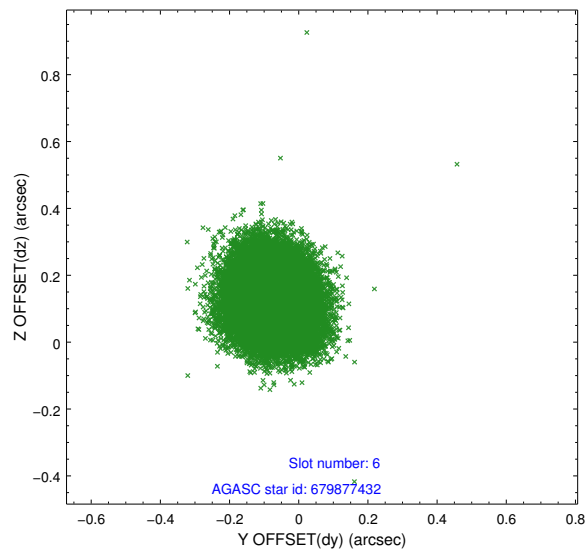
2.4.2 Slot 4



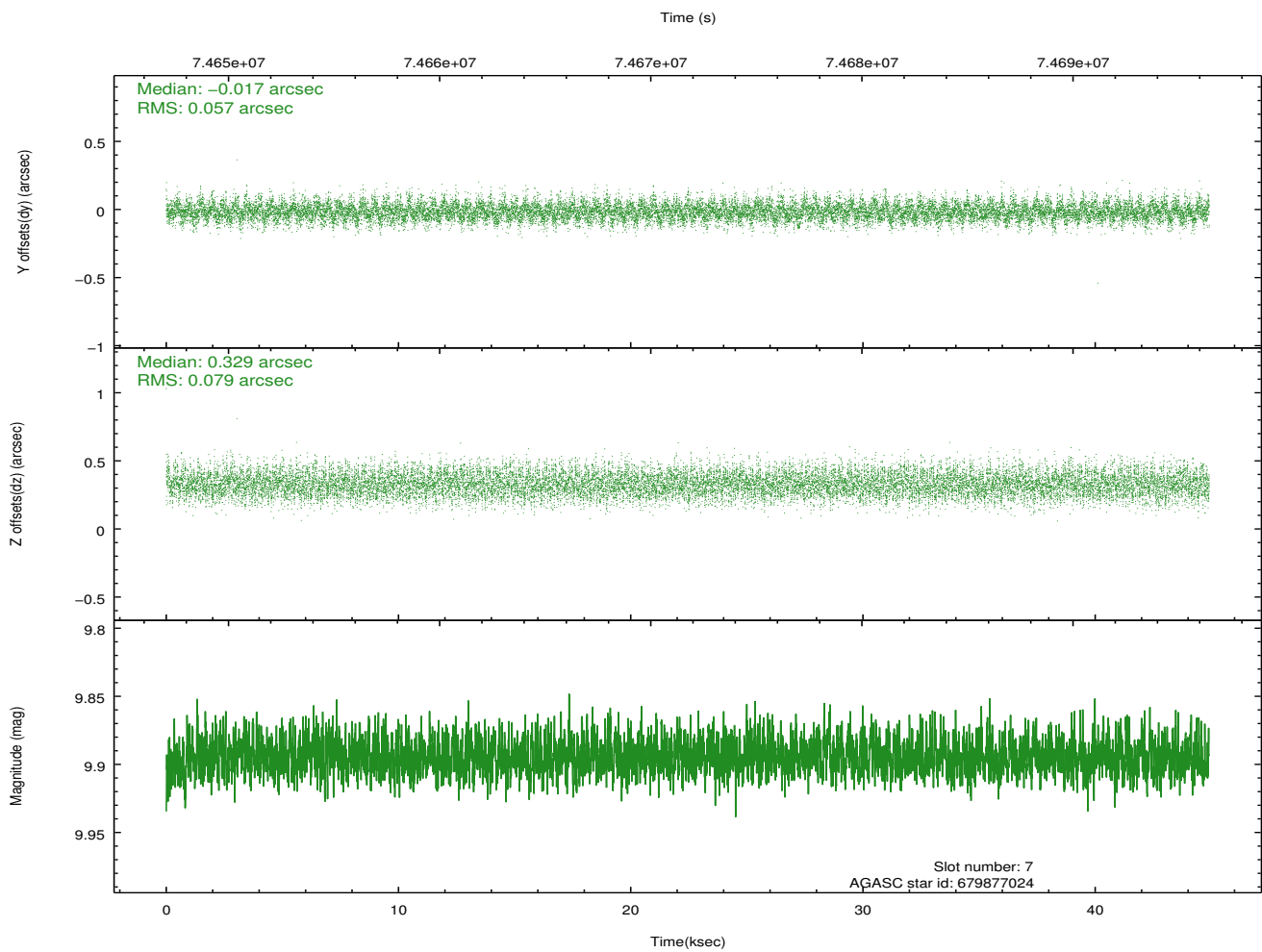
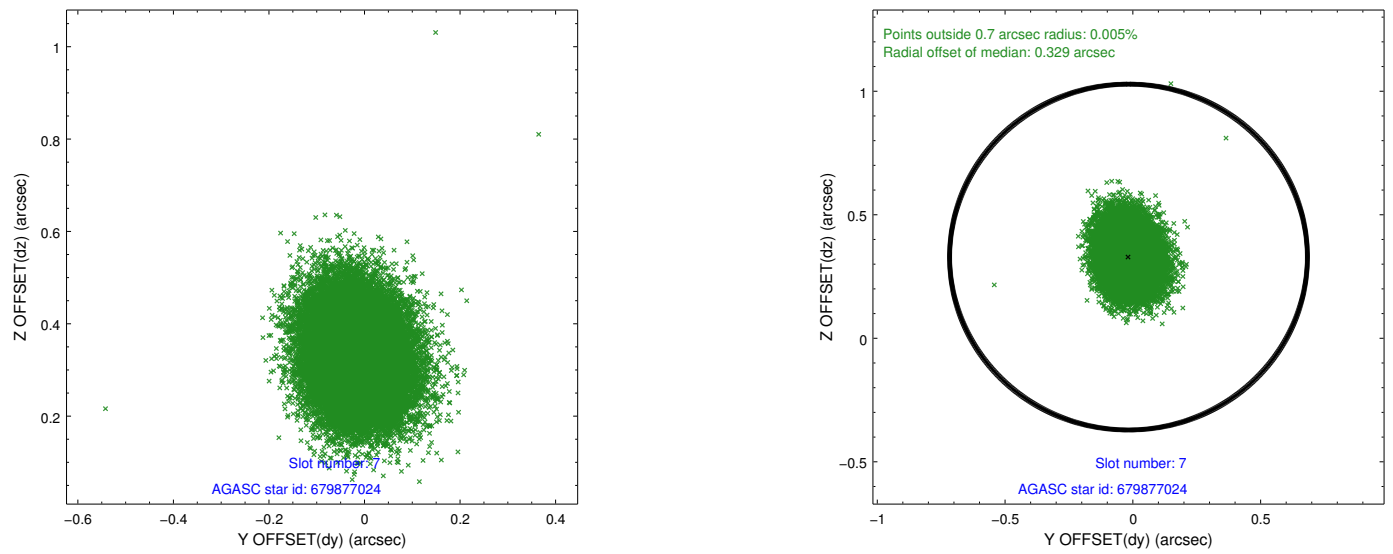
2.4.3 Slot 5



2.4.4 Slot 6

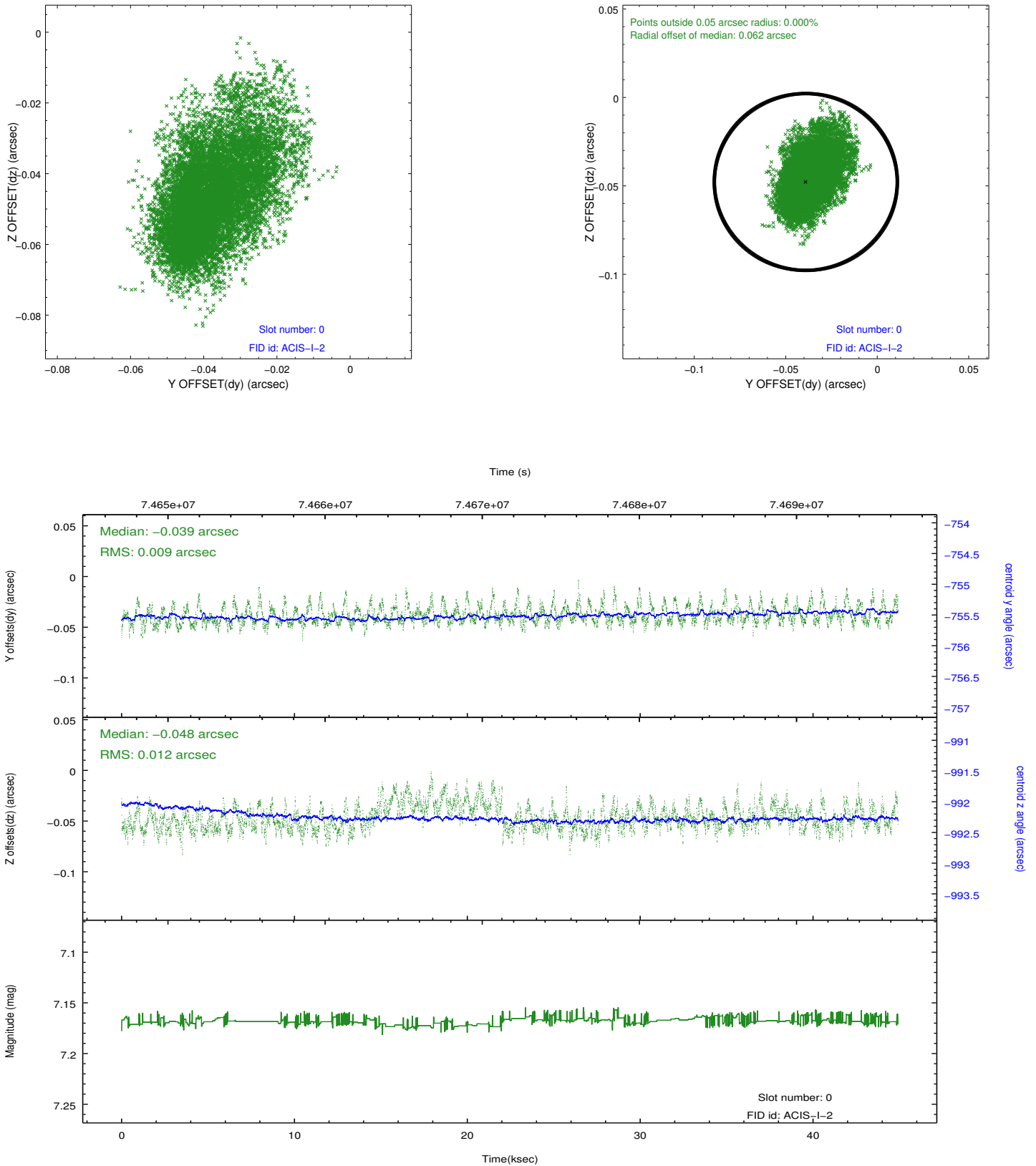


2.4.5 Slot 7

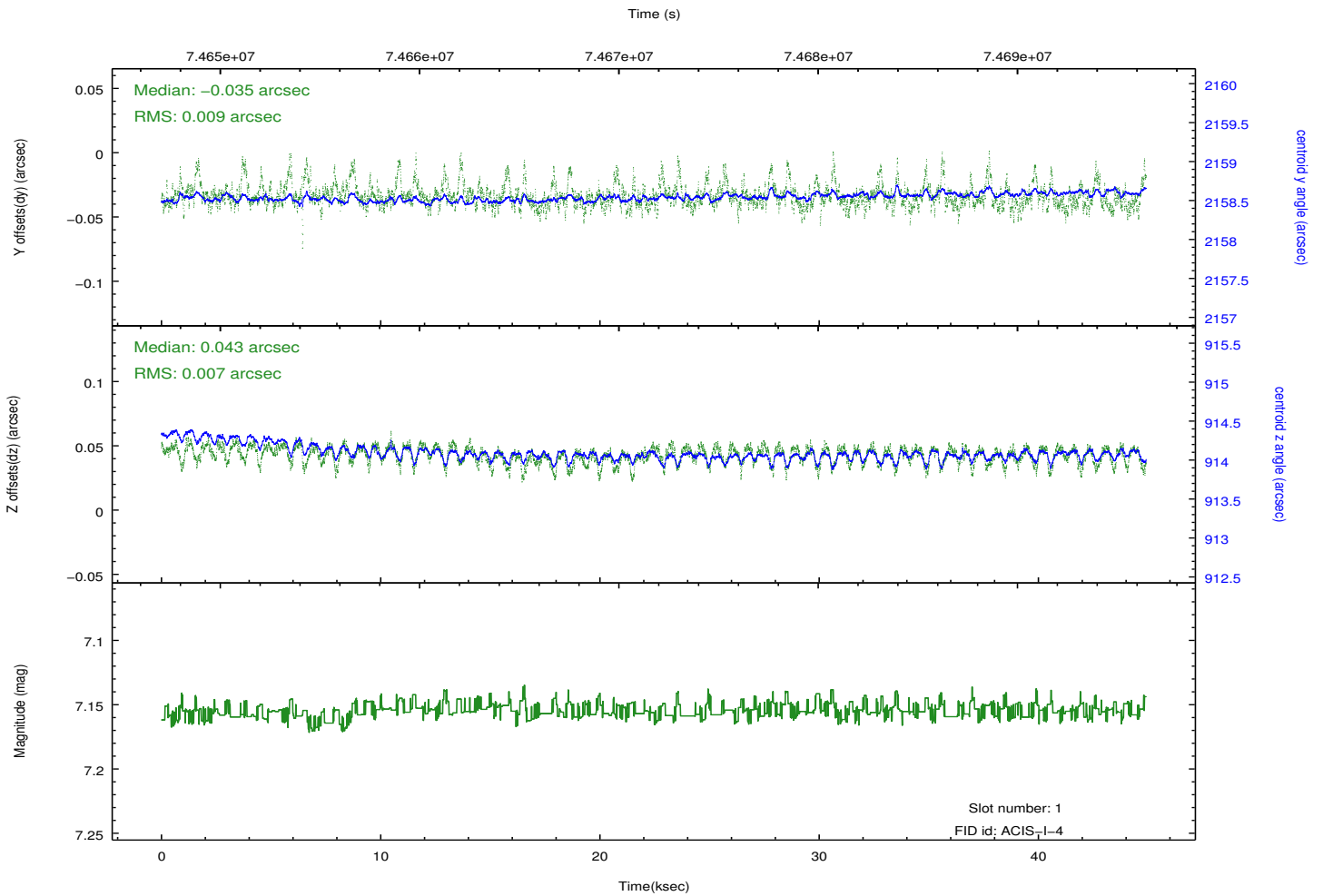
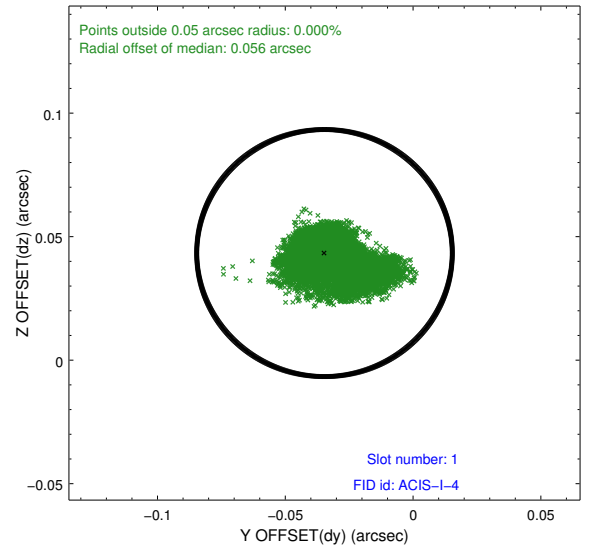
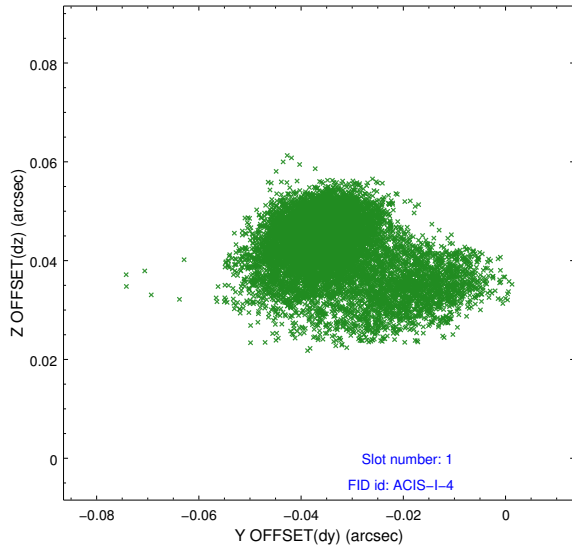


2.5 FID Slots

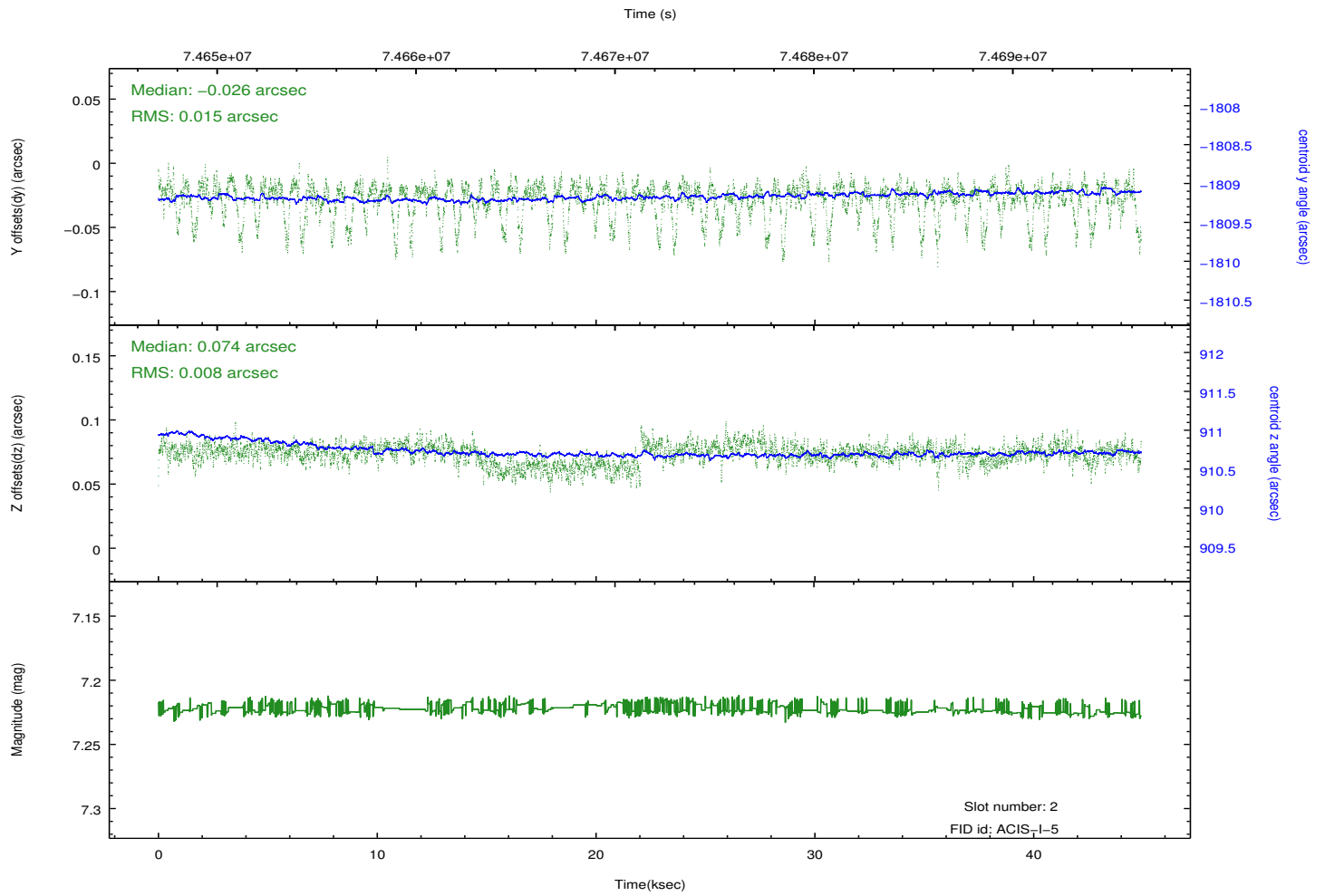
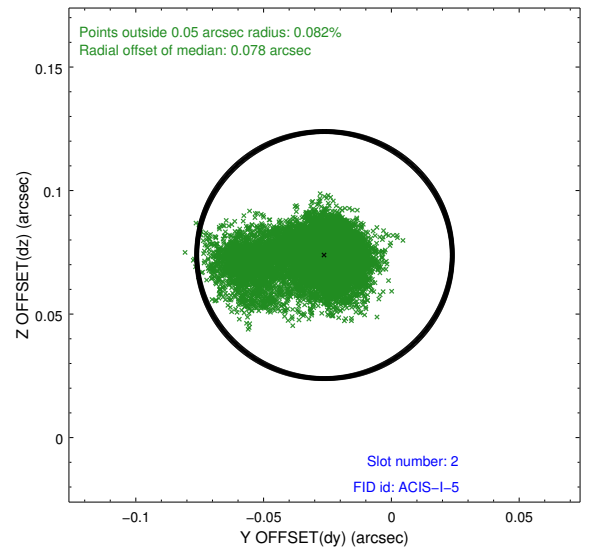
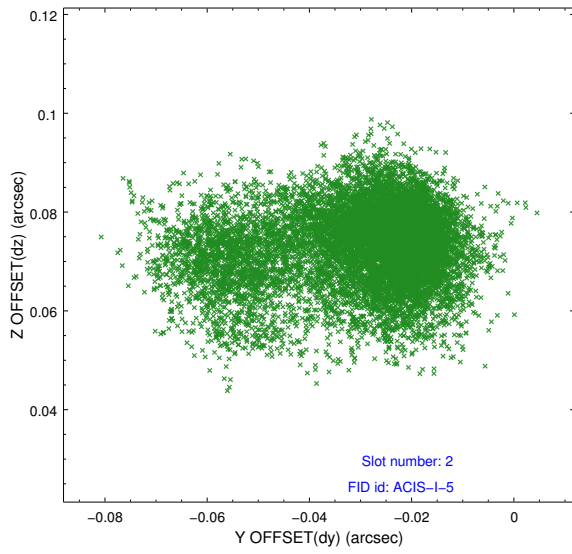
2.5.1 Slot 0



2.5.2 Slot 1



2.5.3 Slot 2



A Summary

A.1 Status

V&V Scientist	Beth Sundheim
V&V Date (YYYY-MM-DD)	2012.08.30
V&V Edition	1
V&V Disposition and Status	OK
V&V Charge Time	44.88

A.2 Comments