

# V&V Reference Report

## L2 ASCDS Version : 8.4.5

Observation 55941 - L2 Version 2  
Chandra X-Ray Center

L2 Processing Date : Jul 5 2012

## Contents

<b>1</b>	<b>Front</b>	<b>2</b>
<b>2</b>	<b>OBI</b>	<b>3</b>
2.1	OBI . . . . .	3
2.1.1	Images . . . . .	3
2.1.2	Bias . . . . .	3
2.1.3	Parameters . . . . .	4
2.1.4	Events . . . . .	4
2.2	Compared Parameters . . . . .	5
2.3	Star Slots . . . . .	6
2.4	FID Slots . . . . .	6
<b>A</b>	<b>Summary</b>	<b>7</b>
A.1	Status . . . . .	7
A.2	Comments . . . . .	7

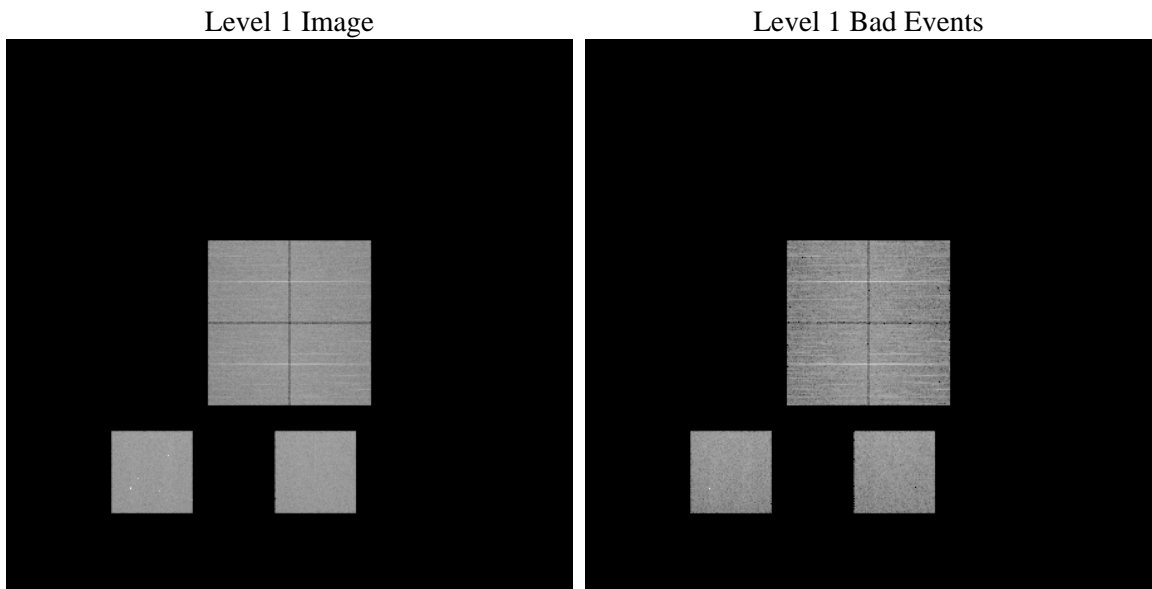
# 1 Front

seq_num	&#160	Sequence number
obs_id	55941	Observation id
title	ACIS-012357 diagnostics	Proposal title
observer	CHANDRA engineering request/realtime commanding	Principal investig
object	&#160	Source name
dtycle	0	&#160
cycle	P	events from which exps? Prim/Second/Both
ra_targ	0.0	Observer's specified target RA [deg]
dec_targ	0.0	Observer's specified target Dec [deg]
ra_nom	12.518968295579	Nominal RA [deg]
dec_nom	4.4835507825772	Nominal Dec [deg]
roll_nom	295.35949232576	Nominal Roll [deg]
revision	2	Processing version of data
ontime	8284.7999691963	Sum of GTIs [s]
livetime	8179.8928434787	Livetime [s]
ontime0	8284.7999691963	Sum of GTIs [s]
ontime1	8284.7999691963	Sum of GTIs [s]
ontime2	8284.7999691963	Sum of GTIs [s]
ontime3	8284.7999691963	Sum of GTIs [s]
ontime5	8284.7999691963	Sum of GTIs [s]
ontime7	8284.7999691963	Sum of GTIs [s]
l2events	498804	Number of level 2 events

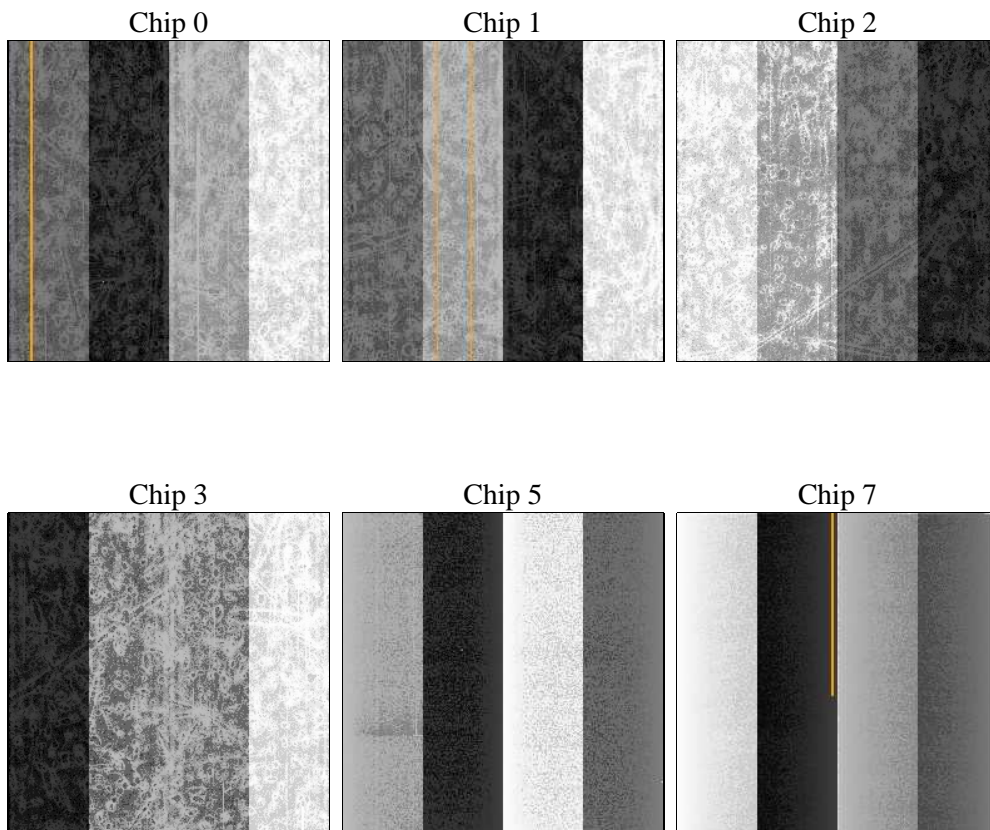
## 2 OBI

### 2.1 OBI

#### 2.1.1 Images



#### 2.1.2 Bias



### 2.1.3 Parameters

obi_num	0	Obi number	sched_exp_time	0.0	[s] Scheduled observation exposure time
ascdsver	8.4.5	Processing system revision	ontime	8284.7999691963	Sum of GTIs [s]
caldbver	4.5.0	&#160	ontime0	8284.7999691963	Sum of GTIs [s]
date	2012-07-05T20:59:42	Date and time of file creation	ontime1	8284.7999691963	Sum of GTIs [s]
revision	2	Processing version of data	ontime2	8284.7999691963	Sum of GTIs [s]
			ontime3	8284.7999691963	Sum of GTIs [s]
			ontime5	8284.7999691963	Sum of GTIs [s]
			ontime7	8284.7999691963	Sum of GTIs [s]
			l1events	906045	Number of level 1 events

### 2.1.4 Events

	ccd 0	ccd 1	ccd 2	ccd 3	ccd 5	ccd 7		ccd 0	ccd 1	ccd 2	ccd 3	ccd 5	ccd 7
level 1 events	138902	137766	137381	145505	174186	172305	grade 0 events	40493	39286	39832	42110	15298	20341
rejected events	60970	59301	62508	66591	67353	64625		29%	28%	28%	28%	8%	11%
rejected %	43%	43%	45%	45%	38%	37%	grade 1 events	255	211	295	327	301	145
								0%	0%	0%	0%	0%	0%
							grade 2 events	14230	15725	12799	13580	38848	23483
								10%	11%	9%	9%	22%	13%
							grade 3 events	5011	4913	4922	5267	4828	9649
								3%	3%	3%	3%	2%	5%
							grade 4 events	5015	4961	4909	5169	4436	9416
								3%	3%	3%	3%	2%	5%
							grade 5 events	3677	3867	3760	4139	9064	10443
								2%	2%	2%	2%	5%	6%
							grade 6 events	13223	13628	12450	12826	43478	44845
								9%	9%	9%	8%	24%	26%
							grade 7 events	56998	55175	58414	62087	57933	53983
								41%	40%	42%	42%	33%	31%

## 2.2 Compared Parameters

Parameter	Planned	Actual	Parameter	Planned	Actual
Instrument	ACIS	ACIS	Obspar format version number	7	7
Detector	ACIS-012357	ACIS-012357	Obspar file type	PREDICTED	ACTUAL
Grating	NONE	NONE	Obspar update status	NONE	UPDATED
Data mode	FAINT	FAINT	Number of optional ACIS chips dropped	0	0
Observation mode	SECONDARY	SECONDARY	On-chip summing requested	N	N
[deg] Pointing RA	0	12.51896829557899	Subarray requested	NONE	NONE
[deg] Pointing Dec	0	4.483550782577244	Alternating exposures requested	N	N
[deg] Pointing Roll	0.0	295.359492325756	[s] Primary exposure time	3.2	3.2
[mm] SIM focus pos	-1.429586	-1.428180813131781			
[mm] SIM defocus	0.1037507710433287	0.1051558262725154			
[mm] SIM translation stage pos	250.455976	250.466033080201			
[mm] SIM translation stage offset	0	-0.01005468664627074			
[s] Observation start time (MET)	404383741.858858	404383740.83385			
Observation start date	2010-10-25T08:49:02	2010-10-25T08:49:00			
[s] Observation end time (MET)	404404059.409903	404404058.3849			
Observation end date	2010-10-25T14:27:39	2010-10-25T14:27:38			
Read mode	TIMED	TIMED			

**2.3 Star Slots**

**2.4 FID Slots**

# A Summary

## A.1 Status

V&V Scientist	Jen Lauer
V&V Date (YYYY-MM-DD)	2012.07.13
V&V Edition	1
V&V Disposition and Status	OK
V&V Charge Time	8.2847999691963

## A.2 Comments