

V&V Reference Report

L2 ASCDS Version : 8.4.4

Observation 57261 - L2 Version 2
Chandra X-Ray Center

L2 Processing Date : Jun 1 2012

Contents

1	Front	2
2	OBI	3
2.1	OBI	3
2.1.1	Images	3
2.1.2	Bias	3
2.1.3	Parameters	4
2.1.4	Events	4
2.2	Compared Parameters	5
2.3	Star Slots	6
2.4	FID Slots	6
A	Summary	7
A.1	Status	7
A.2	Comments	7

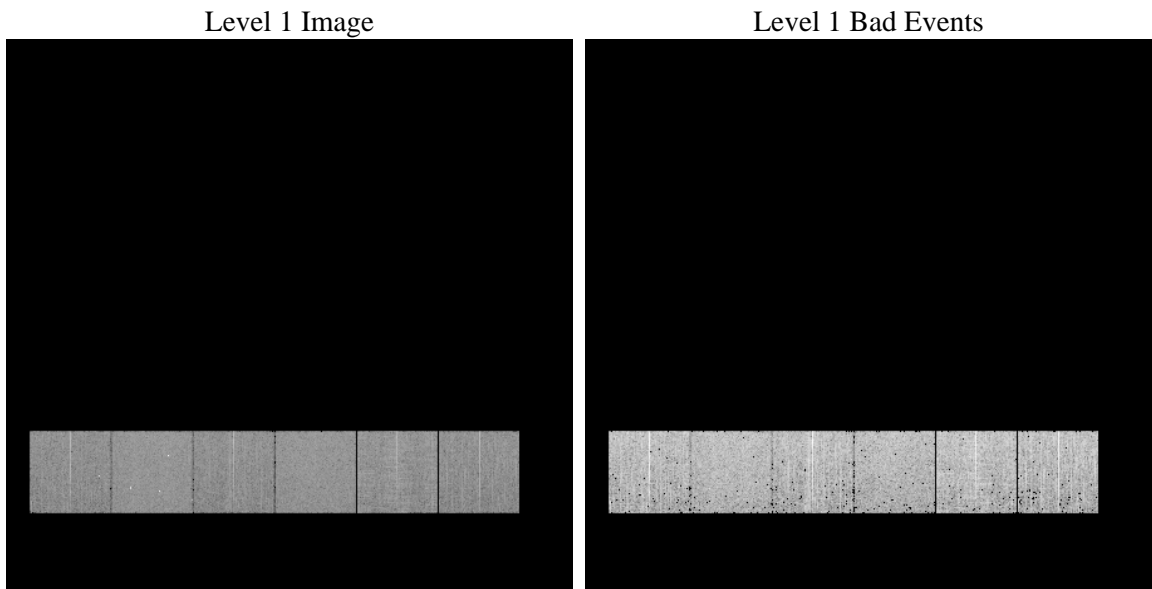
1 Front

seq_num	 	Sequence number
obs_id	57261	Observation id
title	ACIS-456789 diagnostics	Proposal title
observer	CHANDRA engineering request/realtime commanding	Principal investig
object	 	Source name
dtycycle	0	
cycle	P	events from which exps? Prim/Second/Both
ra_targ	0.0	Observer's specified target RA [deg]
dec_targ	0.0	Observer's specified target Dec [deg]
ra_nom	176.96755426931	Nominal RA [deg]
dec_nom	28.001915851059	Nominal Dec [deg]
roll_nom	143.24240760497	Nominal Roll [deg]
revision	2	Processing version of data
ontime	3270.3999878764	Sum of GTIs [s]
livetime	3228.9882140315	Livetime [s]
ontime4	3270.3999878764	Sum of GTIs [s]
ontime5	3270.3999878764	Sum of GTIs [s]
ontime6	3270.3999878764	Sum of GTIs [s]
ontime7	3270.3999878764	Sum of GTIs [s]
ontime8	3270.3999878764	Sum of GTIs [s]
ontime9	3270.3999878764	Sum of GTIs [s]
l2events	215017	Number of level 2 events

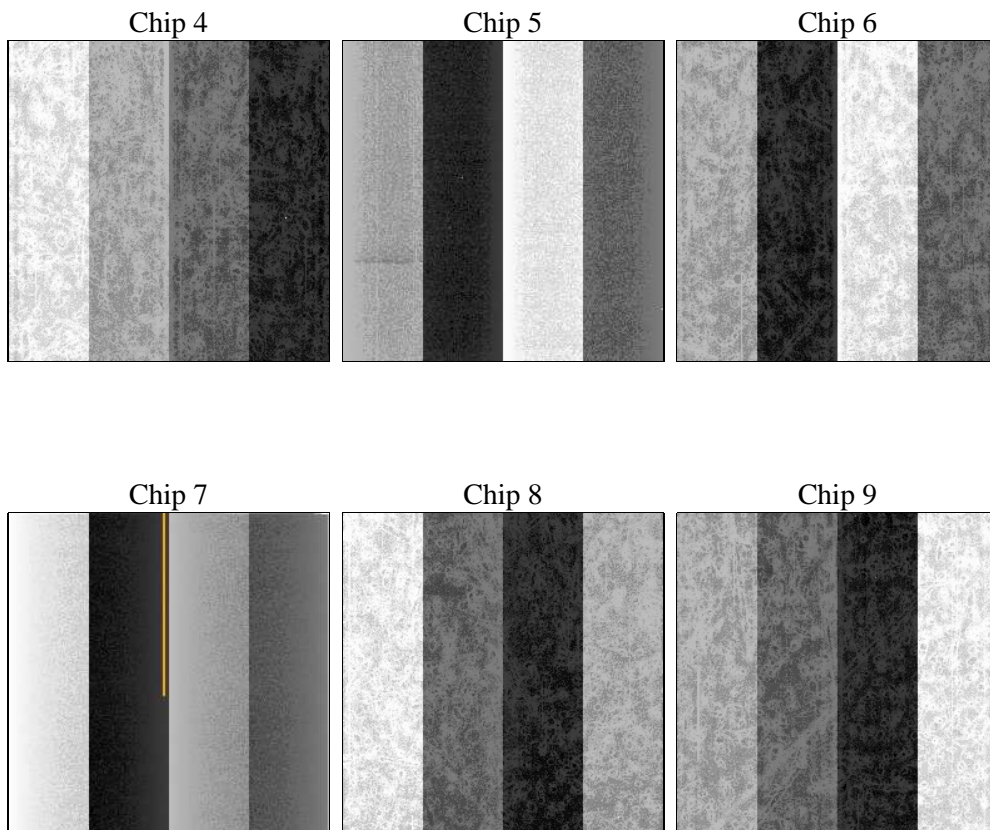
2 OBI

2.1 OBI

2.1.1 Images



2.1.2 Bias



2.1.3 Parameters

obi_num	0	Obi number	sched_exp_time	0.0	[s] Scheduled observation exposure time
ascdsver	8.4.4	Processing system revision	ontime	3270.3999878764	Sum of GTIs [s]
caldbver	4.4.9	 	ontime4	3270.3999878764	Sum of GTIs [s]
date	2012-06-02T00:11:33	Date and time of file creation	ontime5	3270.3999878764	Sum of GTIs [s]
revision	2	Processing version of data	ontime6	3270.3999878764	Sum of GTIs [s]
			ontime7	3270.3999878764	Sum of GTIs [s]
			ontime8	3270.3999878764	Sum of GTIs [s]
			ontime9	3270.3999878764	Sum of GTIs [s]
			l1events	423465	Number of level 1 events

2.1.4 Events

	ccd 4	ccd 5	ccd 6	ccd 7	ccd 8	ccd 9
level 1 events	63884	78387	65497	75338	74659	65700
rejected events	31881	29472	31518	27827	34967	32548
rejected %	49%	37%	48%	36%	46%	49%

	ccd 4	ccd 5	ccd 6	ccd 7	ccd 8	ccd 9
grade 0 events	18297	8549	17942	9036	19750	17580
	28%	10%	27%	11%	26%	26%
grade 1 events	160	106	108	56	149	147
	0%	0%	0%	0%	0%	0%
grade 2 events	4987	16951	6062	10381	7466	5936
	7%	21%	9%	13%	10%	9%
grade 3 events	2284	2290	2224	4432	2823	2187
	3%	2%	3%	5%	3%	3%
grade 4 events	2258	2219	2205	4443	2831	2150
	3%	2%	3%	5%	3%	3%
grade 5 events	1677	4025	1837	4474	2294	1980
	2%	5%	2%	5%	3%	3%
grade 6 events	4214	18953	5584	19255	6885	5332
	6%	24%	8%	25%	9%	8%
grade 7 events	30007	25294	29535	23261	32461	30388
	46%	32%	45%	30%	43%	46%

2.2 Compared Parameters

Parameter	Planned	Actual	Parameter	Planned	Actual
Instrument	ACIS	ACIS	Obspar format version number	7	7
Detector	ACIS-456789	ACIS-456789	Obspar file type	PREDICTED	ACTUAL
Grating	NONE	NONE	Obspar update status	NONE	UPDATED
Data mode	FAINT	FAINT	Number of optional ACIS chips dropped	0	0
Observation mode	SECONDARY	SECONDARY	On-chip summing requested	N	N
[deg] Pointing RA	0	176.9675542693129	Subarray requested	NONE	NONE
[deg] Pointing Dec	0	28.00191585105924	Alternating exposures requested	N	N
[deg] Pointing Roll	0.0	143.2424076049716	[s] Primary exposure time	3.2	3.2
[mm] SIM focus pos	-1.429586	-0.6828225247311905			
[mm] SIM defocus	0.1037507710433287	0.8505141146731063			
[mm] SIM translation stage pos	250.455976	250.466033080201			
[mm] SIM translation stage offset	0	-0.01005468664627074			
[s] Observation start time (MET)	352289936.677071	352289935.65207			
Observation start date	2009-03-01T10:18:57	2009-03-01T10:18:55			
[s] Observation end time (MET)	352295826.327364	352295825.30236			
Observation end date	2009-03-01T11:57:06	2009-03-01T11:57:05			
Read mode	TIMED	TIMED			

2.3 Star Slots

2.4 FID Slots

A Summary

A.1 Status

V&V Scientist	Jen Lauer
V&V Date (YYYY-MM-DD)	2012.06.06
V&V Edition	1
V&V Disposition and Status	OK
V&V Charge Time	3.2703999878764

A.2 Comments