

V&V Reference Report

L2 ASCDS Version : 8.5.1.1

Observation 5851 - L2 Version 4
Chandra X-Ray Center

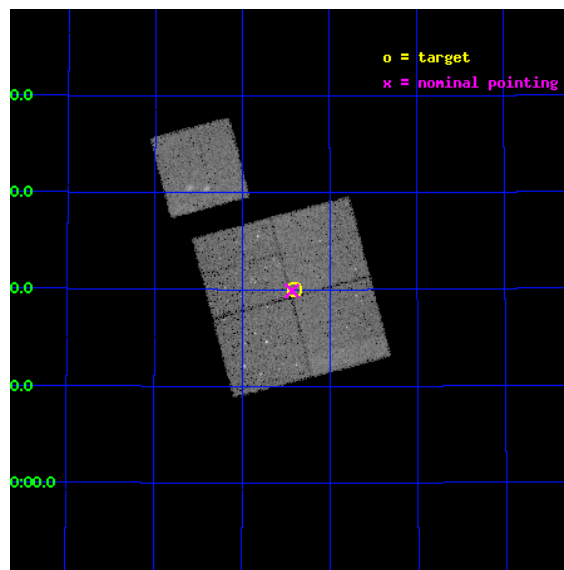
L2 Processing Date : Mar 7 2013

Contents

1	Front	2
2	OBI	3
2.1	OBI	3
2.1.1	Images	3
2.1.2	Bias	3
2.1.3	Parameters	4
2.1.4	Events	4
2.2	Compared Parameters	5
2.3	Aspect	6
2.4	Star Slots	9
2.4.1	Slot 3	9
2.4.2	Slot 4	10
2.4.3	Slot 5	11
2.4.4	Slot 6	12
2.4.5	Slot 7	13
2.5	FID Slots	14
2.5.1	Slot 0	14
2.5.2	Slot 1	15
2.5.3	Slot 2	16
A	Summary	17
A.1	Status	17
A.2	Comments	17

1 Front

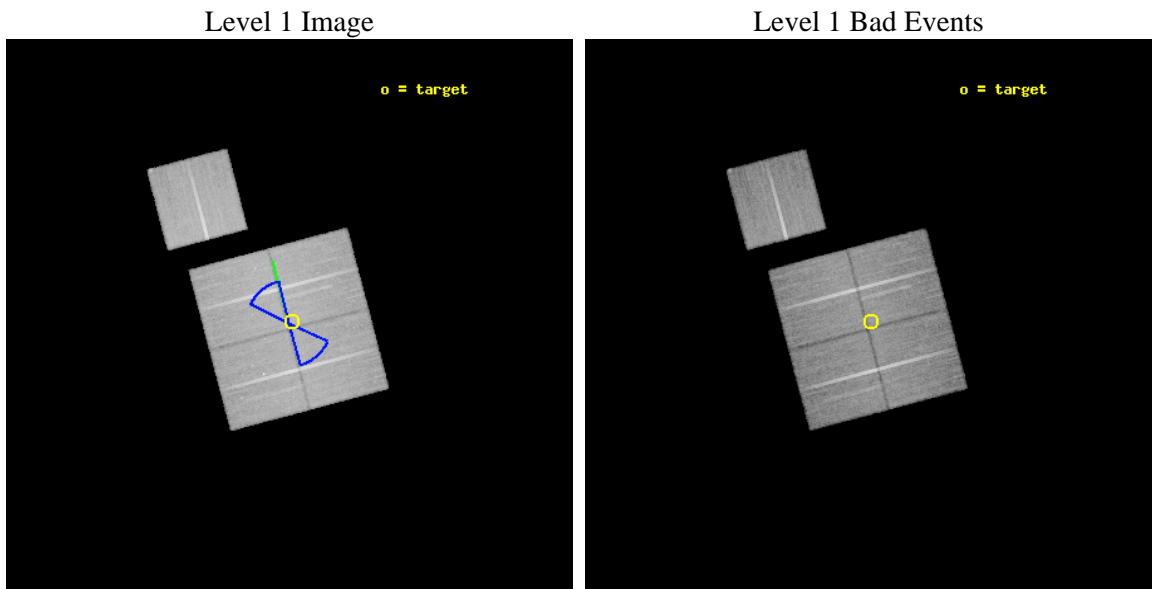
seq_num	900353	Sequence number
obs_id	5851	Observation id
title	Deep Chandra Imaging of the Extended Groth Strip: The Co-evolution of Black Holes and Galaxies	Proposal title
observer	Prof Kirpal Nandra	Principal investigator
object	EGS-6	Source name
dtcycle	0	
cycle	P	events from which exps? Prim/Second/Both
ra_targ	214.102081	Observer's specified target RA [deg]
dec_targ	52.334053	Observer's specified target Dec [deg]
ra_nom	214.10812050399	Nominal RA [deg]
dec_nom	52.331207275862	Nominal Dec [deg]
roll_nom	345.20390673859	Nominal Roll [deg]
revision	4	Processing version of data
ontime	36149.017960042	Sum of GTIs [s]
livetime	35676.704427874	Livetime [s]
ontime0	36155.299930453	Sum of GTIs [s]
ontime1	36155.299930453	Sum of GTIs [s]
ontime2	36152.158960223	Sum of GTIs [s]
ontime3	36149.017960042	Sum of GTIs [s]
ontime6	36149.018049717	Sum of GTIs [s]
l2events	99198	Number of level 2 events



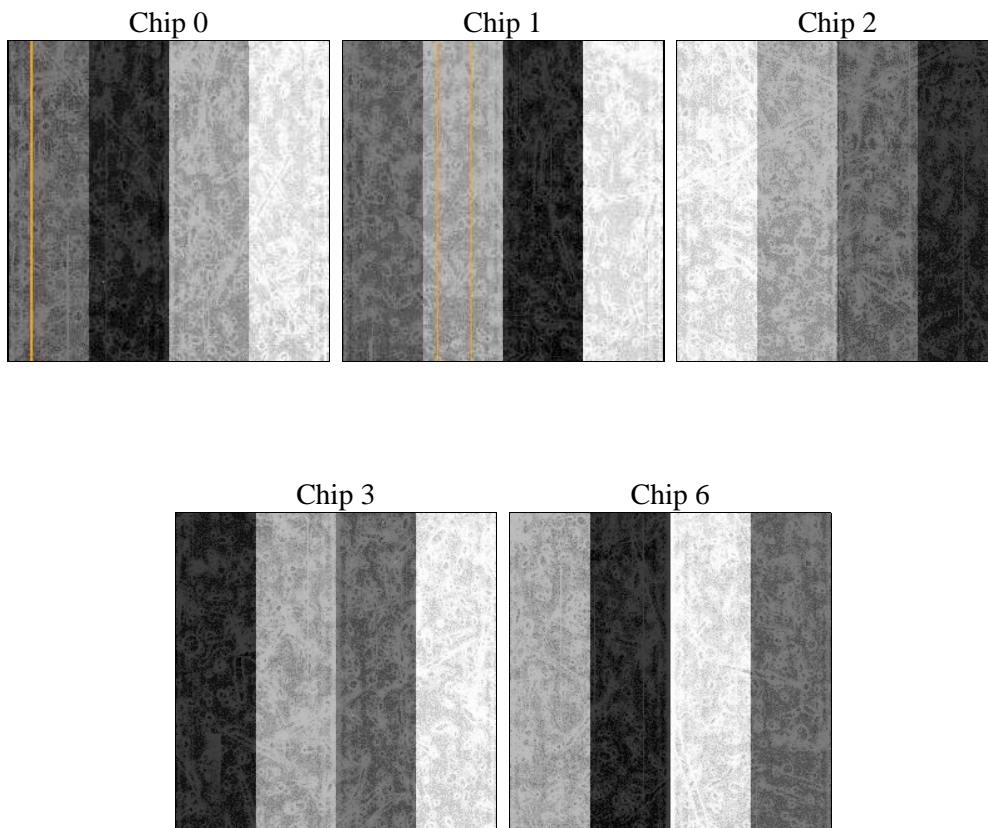
2 OBI

2.1 OBI

2.1.1 Images



2.1.2 Bias



2.1.3 Parameters

obi_num	0	Obi number	sched_exp_time	36000.000000	[s] Scheduled observation exposure time
ascdsver	8.5.1.1	Processing system revision	ontime	36149.017960042	Sum of GTIs [s]
caldsver	4.5.6	 	ontime0	36155.299930453	Sum of GTIs [s]
date	2013-03-07T19:02:26	Date and time of file creation	ontime1	36155.299930453	Sum of GTIs [s]
revision	4	Processing version of data	ontime2	36152.158960223	Sum of GTIs [s]
			ontime3	36149.017960042	Sum of GTIs [s]
			ontime6	36149.018049717	Sum of GTIs [s]
			l1events	1165700	Number of level 1 events

2.1.4 Events

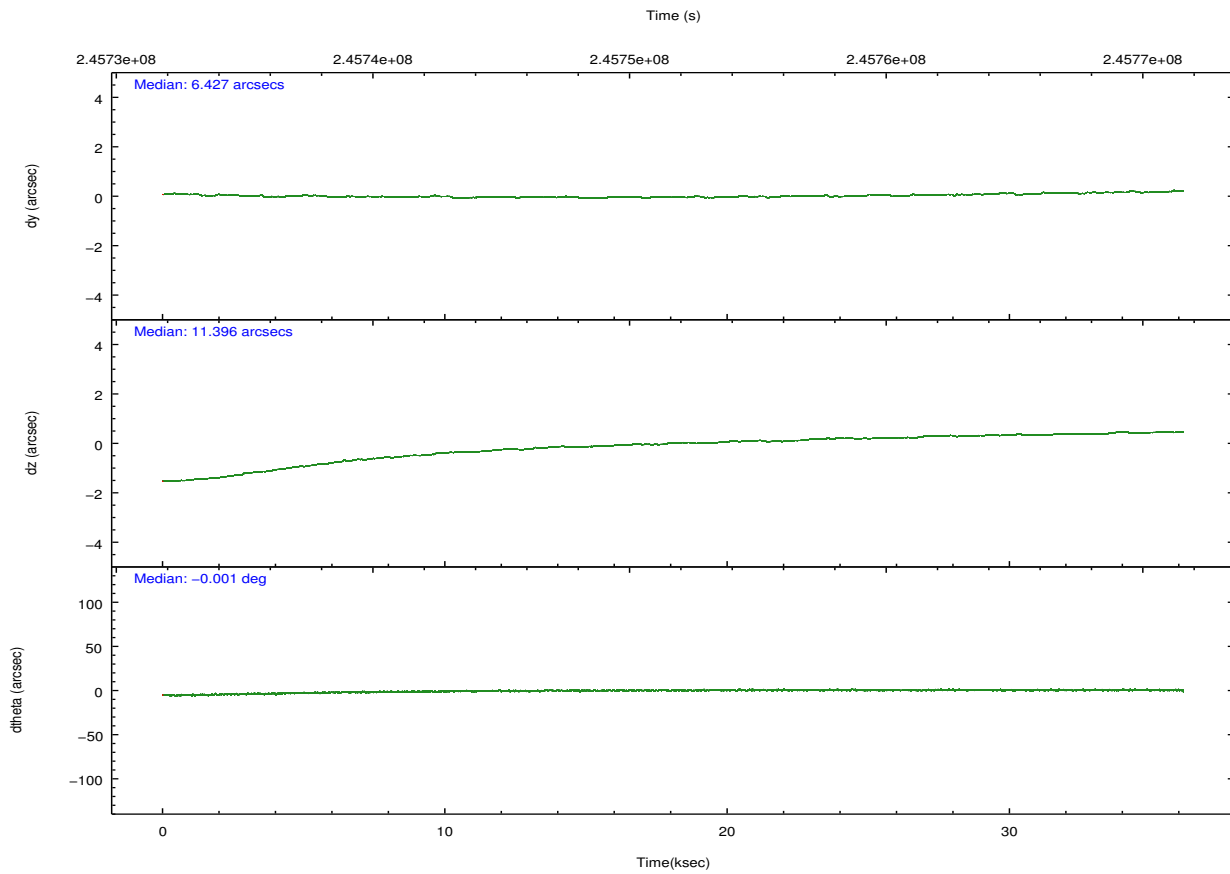
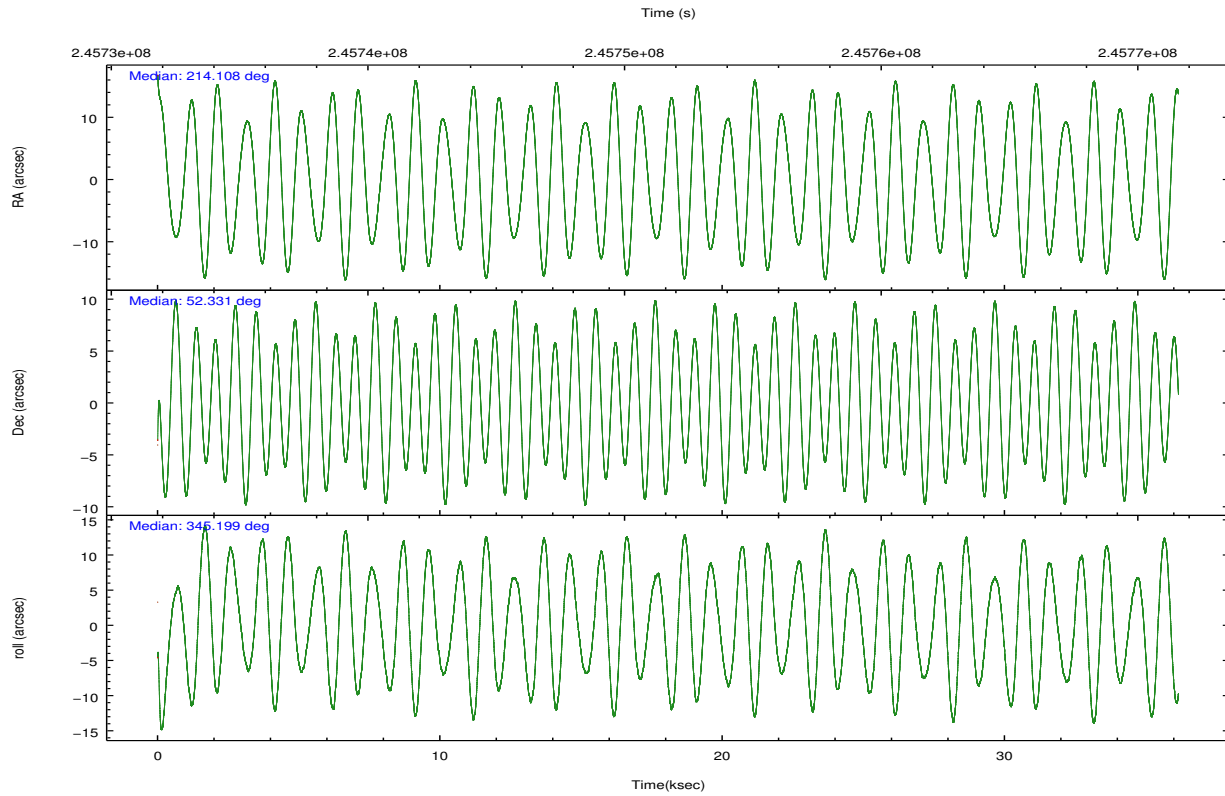
	ccd 0	ccd 1	ccd 2	ccd 3	ccd 6
level 1 events	222398	221120	248803	237205	236174
rejected events	197875	195458	225629	215244	212124
rejected %	88%	88%	90%	90%	89%

	ccd 0	ccd 1	ccd 2	ccd 3	ccd 6
grade 0 events	9382	9271	8673	7768	8624
	4%	4%	3%	3%	3%
grade 1 events	104	92	131	121	92
	0%	0%	0%	0%	0%
grade 2 events	5678	5681	5399	4824	5276
	2%	2%	2%	2%	2%
grade 3 events	2722	2846	2537	2630	2710
	1%	1%	1%	1%	1%
grade 4 events	2503	2898	2566	2549	2658
	1%	1%	1%	1%	1%
grade 5 events	8090	9111	7520	9684	9492
	3%	4%	3%	4%	4%
grade 6 events	4532	5251	4221	4455	5053
	2%	2%	1%	1%	2%
grade 7 events	189387	185970	217756	205174	202269
	85%	84%	87%	86%	85%

2.2 Compared Parameters

Parameter	Planned	Actual	Parameter	Planned	Actual
Instrument	ACIS	ACIS	Obspar format version number	7	7
Detector	ACIS-01236	ACIS-01236	Obspar file type	PREDICTED	ACTUAL
Grating	NONE	NONE	Obspar update status	NONE	UPDATED
Data mode	VFAINT	VFAINT	Number of optional ACIS chips dropped	0	0
Observation mode	POINTING	POINTING	On-chip summing requested	N	N
[deg] Pointing RA	214.064887	214.1081205039938	Subarray requested	NONE	NONE
[deg] Pointing Dec	52.323922	52.33120727586227	Alternating exposures requested	N	N
[deg] Pointing Roll	345.029437	345.203906738587	[s] Primary exposure time	0.000000	3.1
[deg] Roll angle	50.756000	50.756000			
[deg] Roll tolerance	25.000000	25.000000			
Roll constraint allows 180D rotation	Y	Y			
[mm] SIM focus pos	-0.782348	-0.7809083437167272			
[mm] SIM defocus	0	0.001439871863259334			
[mm] SIM translation stage pos	-233.592463	-233.5874344608287			
[mm] SIM translation stage offset	0	-0.005018542100998502			
[s] Observation start time (MET)	245733783.184000	245732598.45517			
Observation start date	2005-10-15T03:21:59	2005-10-15T03:03:18			
[s] Observation end time (MET)	245769783.184000	245770725.38193			
Observation end date	2005-10-15T13:21:59	2005-10-15T13:38:45			
Read mode	TIMED	TIMED			

2.3 Aspect

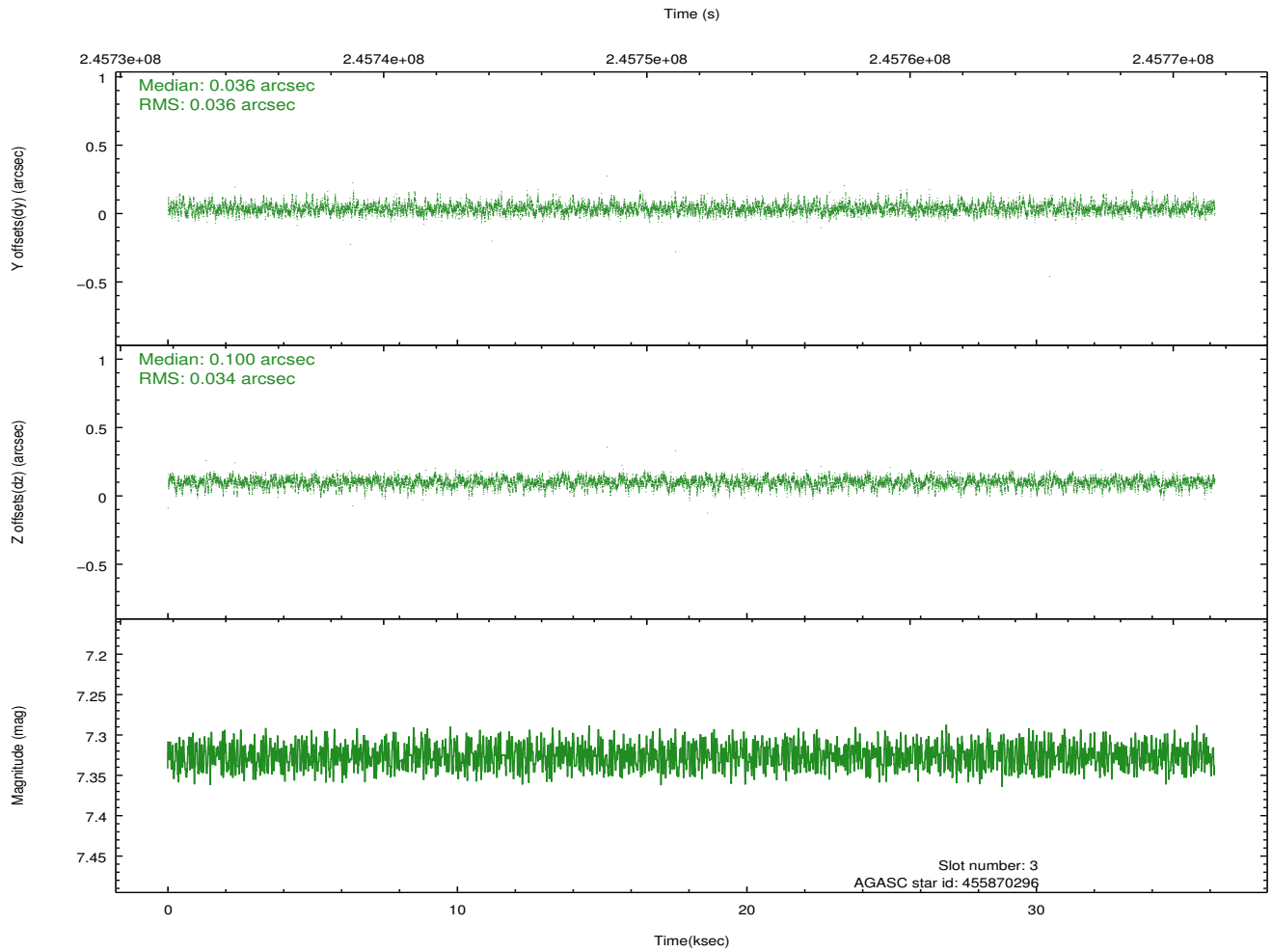
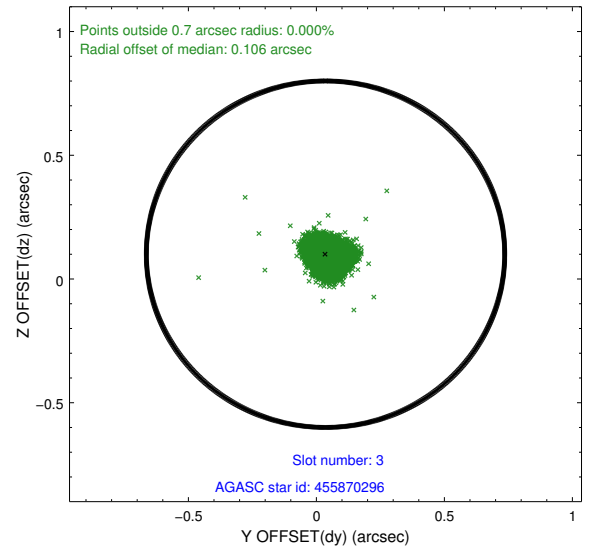
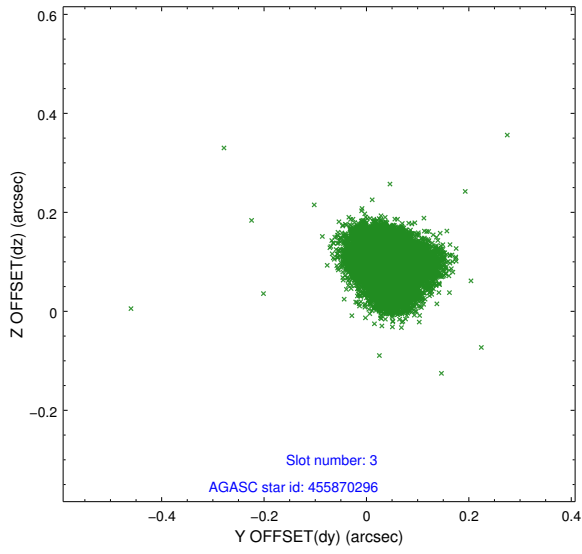


Slot Statistics

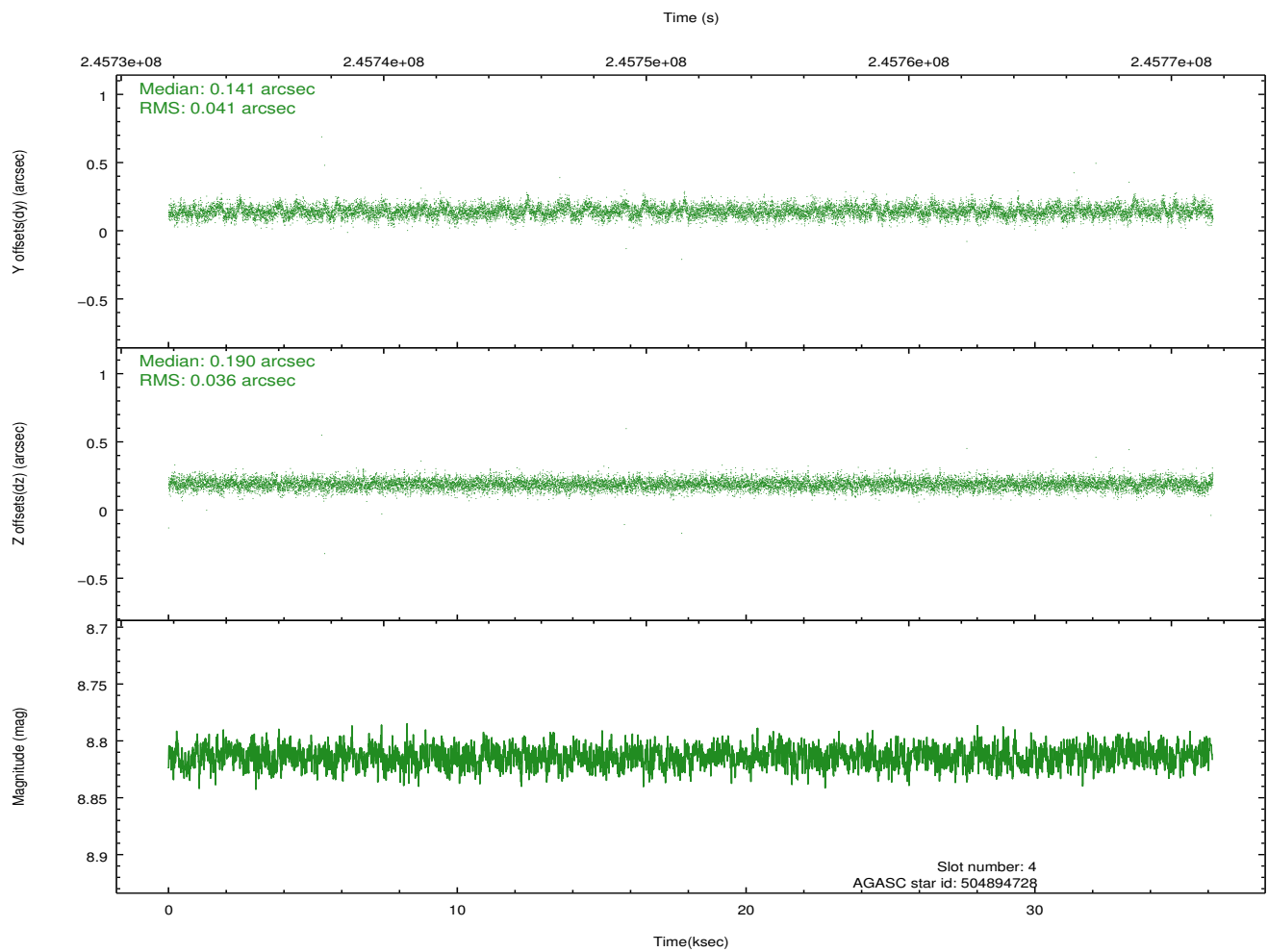
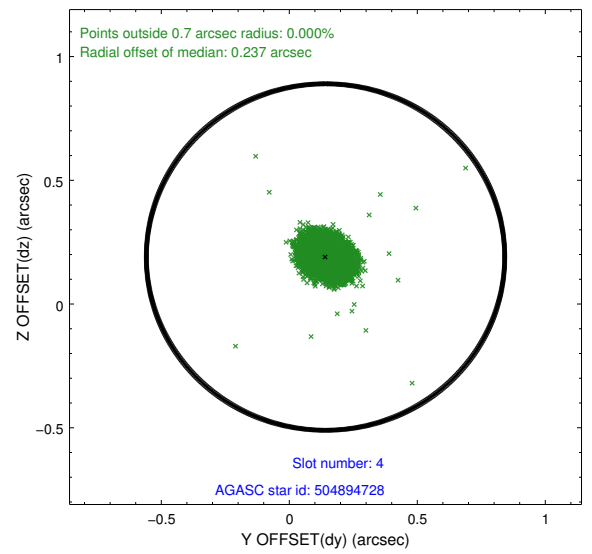
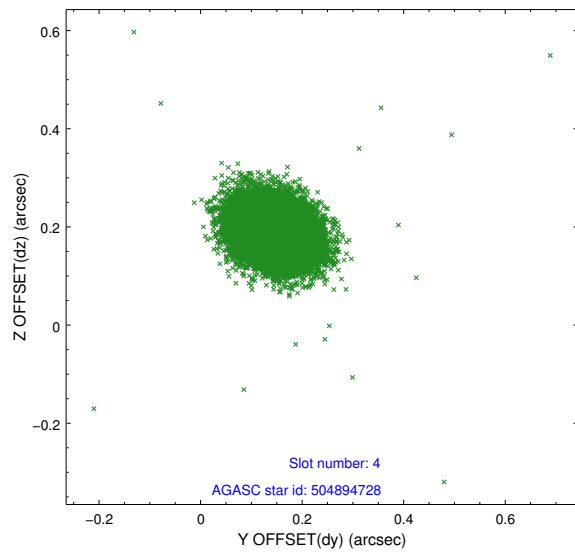
slot	status	id	mag	n_pts	med_dy	med_dz	dr1	dr2	ra	dec	mean_y	mean_z
0	FID	ACIS-I-1	7.24	8819	0.046	-0.027	0.012	0.050	0.000000	0.000000	933.27	-834.76
1	FID	ACIS-I-5	7.23	8820	-0.159	0.062	0.011	0.033	0.000000	0.000000	-1814.98	1062.84
2	FID	ACIS-I-6	7.25	8820	0.024	0.037	0.014	0.029	0.000000	0.000000	398.81	1707.32
3	GUIDE	455870296	7.33	17639	0.036	0.100	0.051	0.086	214.629779	52.033323	1477.79	-682.36
4	GUIDE	504894728	8.81	17631	0.141	0.190	0.056	0.094	213.220892	52.722550	-2151.04	921.56
5	GUIDE	505806936	7.01	17571	-0.004	-0.018	0.072	0.112	213.820815	52.535927	-713.81	600.29
6	GUIDE	505812376	7.66	17640	-0.199	-0.193	0.045	0.074	214.039537	52.937930	-624.48	2121.19
7	GUIDE	455871352	8.13	17573	0.017	-0.078	0.054	0.090	215.099961	52.172669	2344.15	80.46

2.4 Star Slots

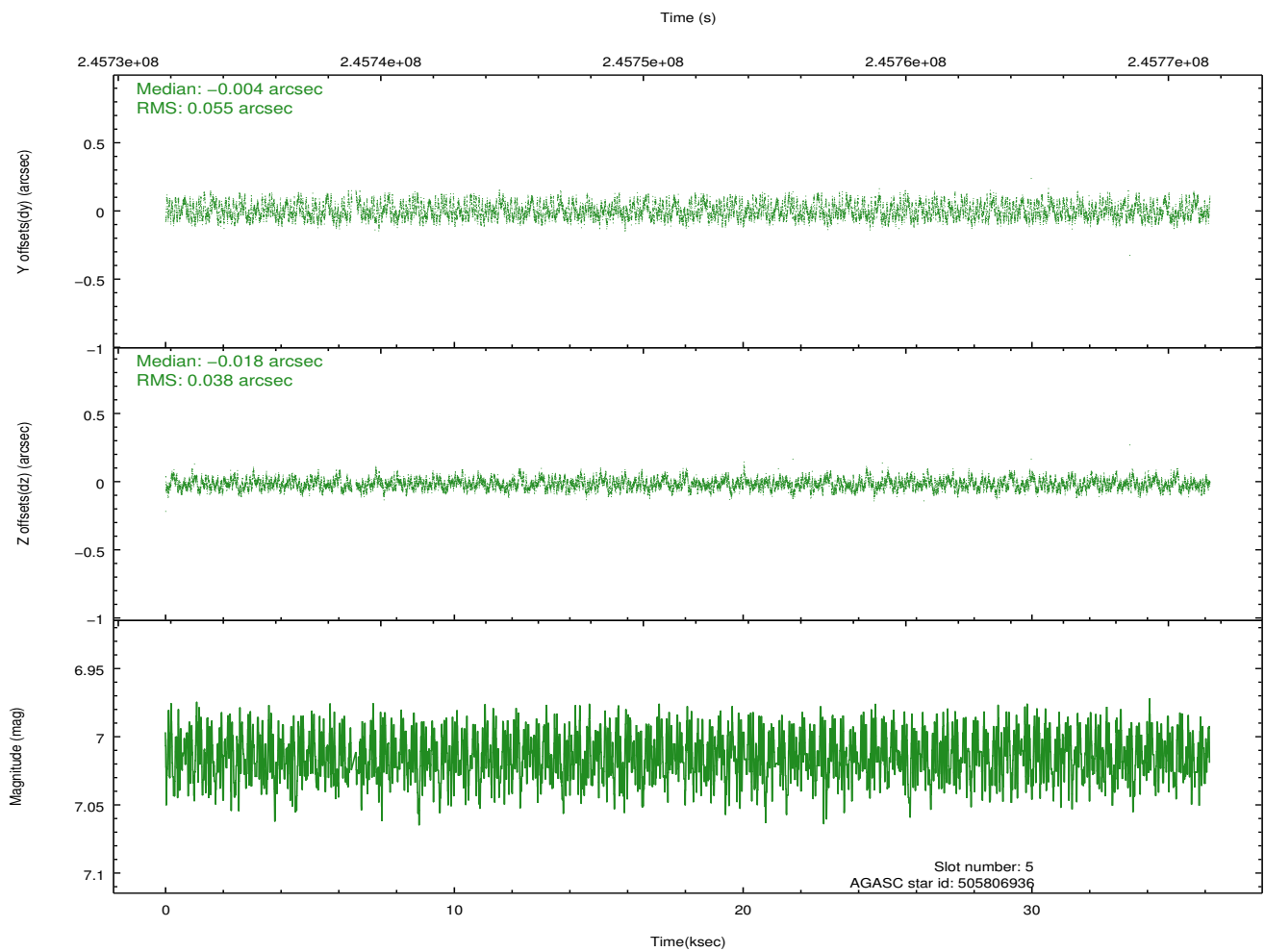
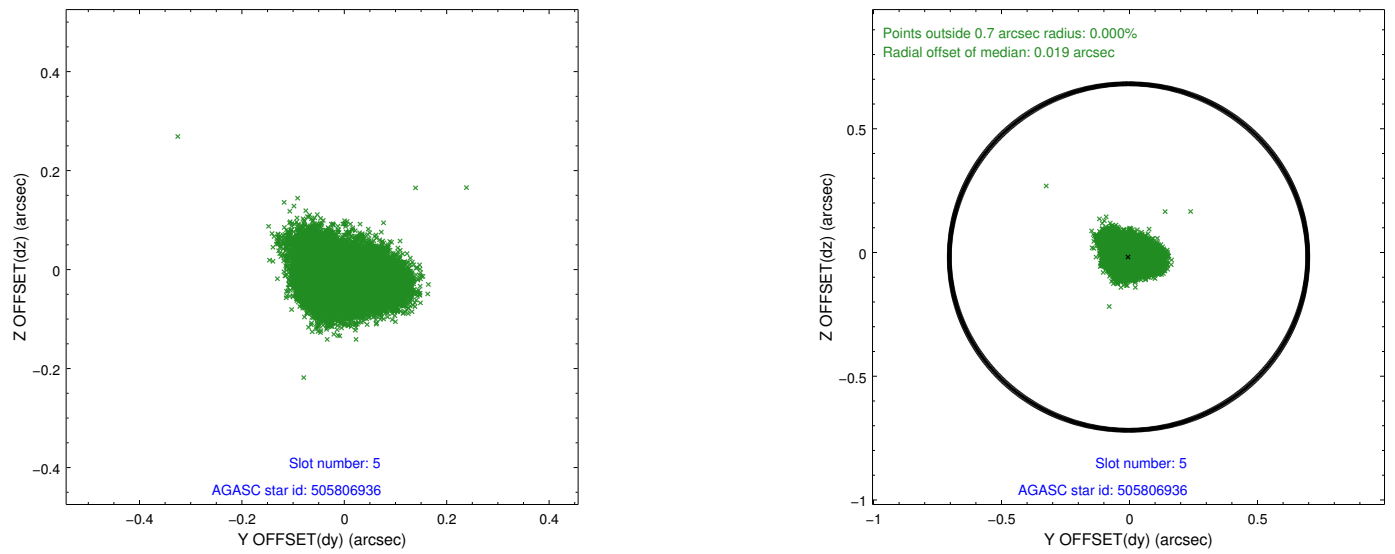
2.4.1 Slot 3



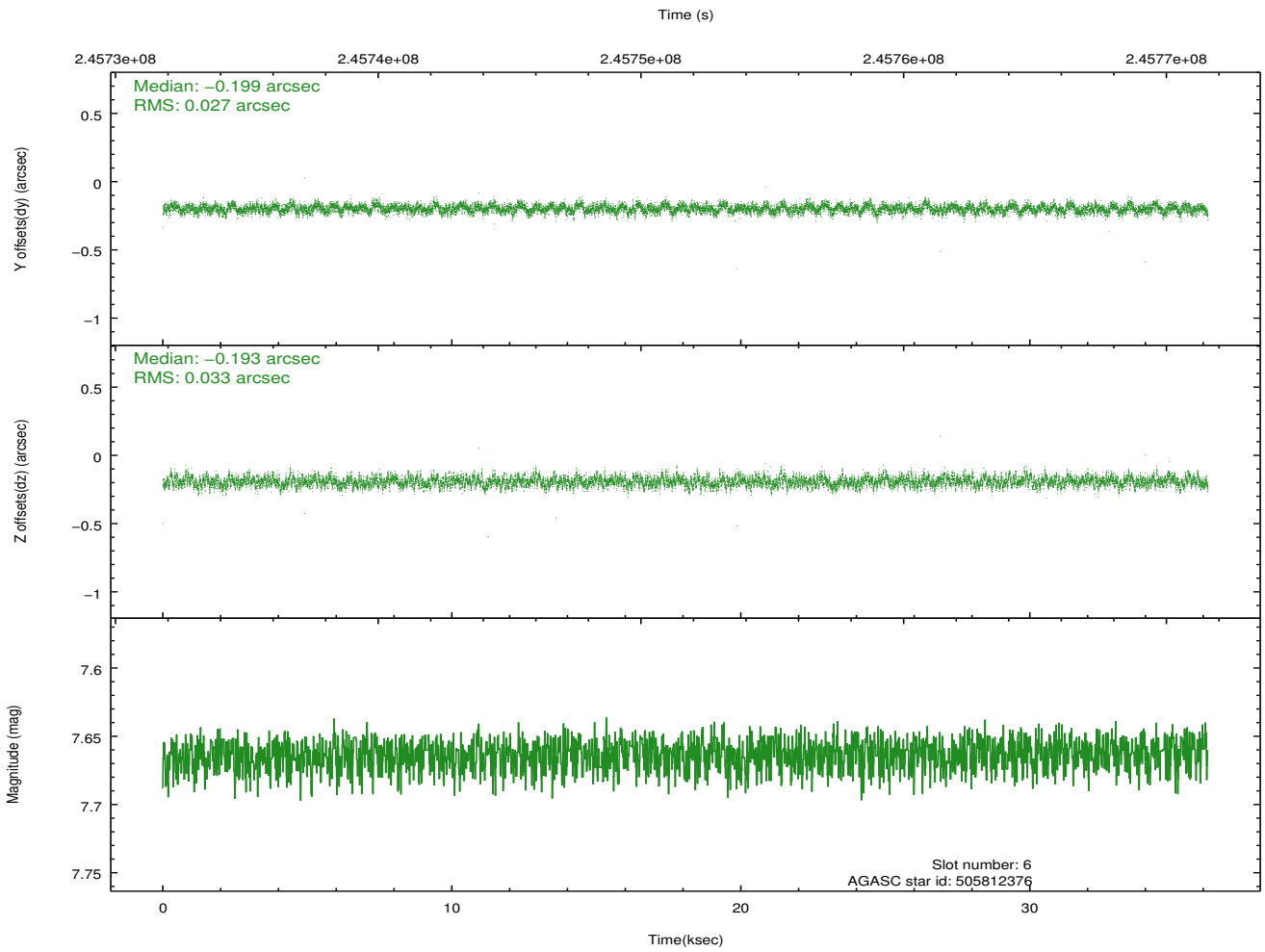
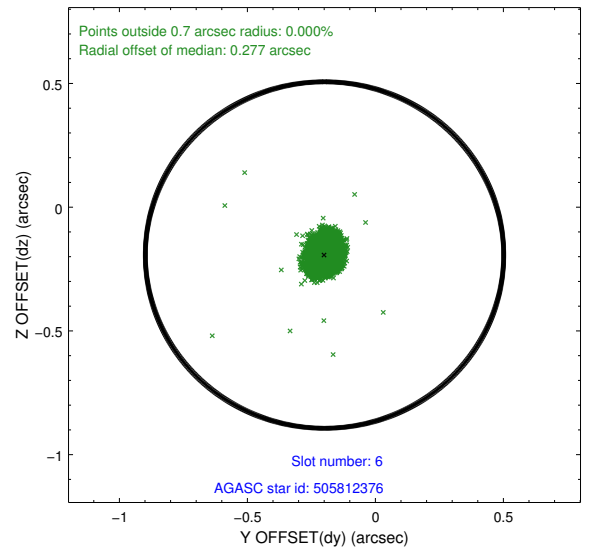
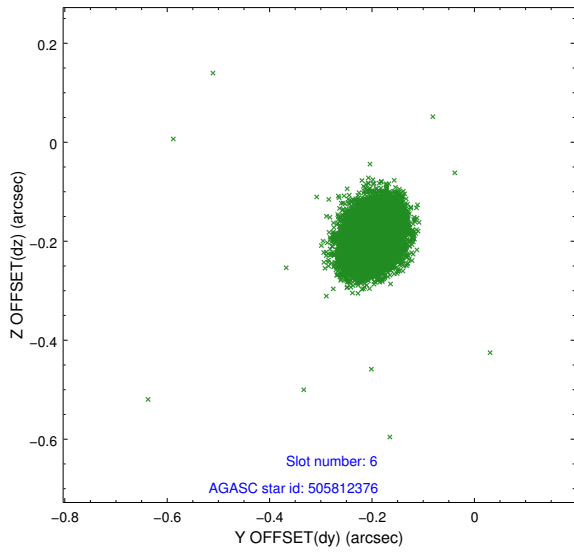
2.4.2 Slot 4



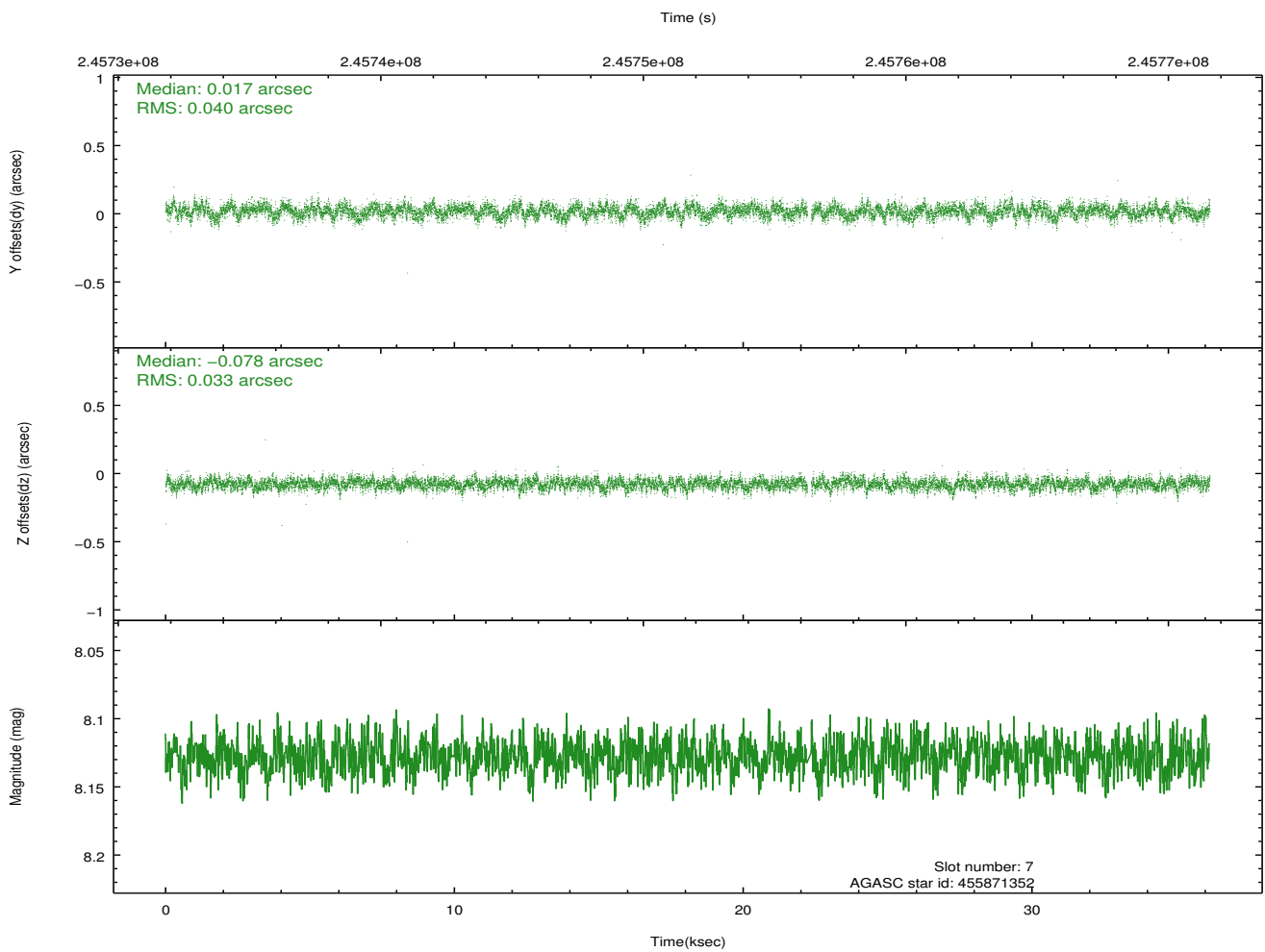
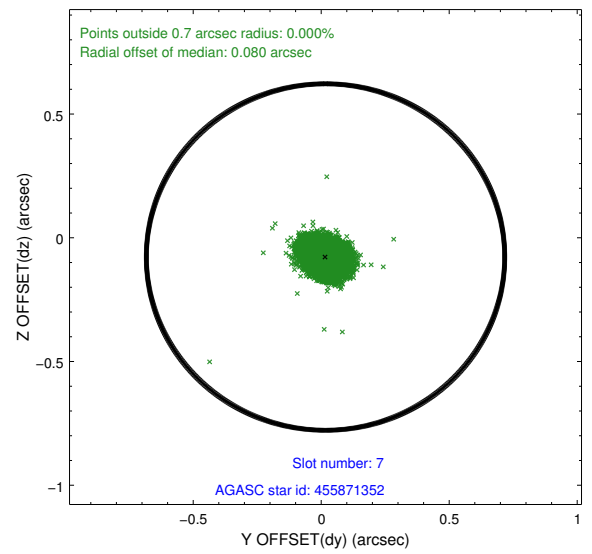
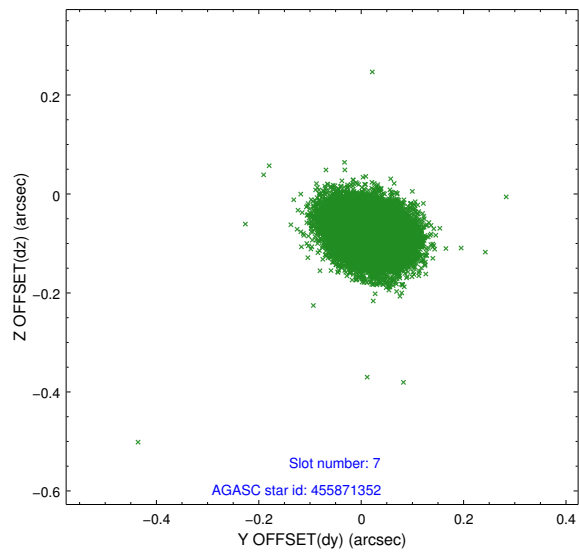
2.4.3 Slot 5



2.4.4 Slot 6

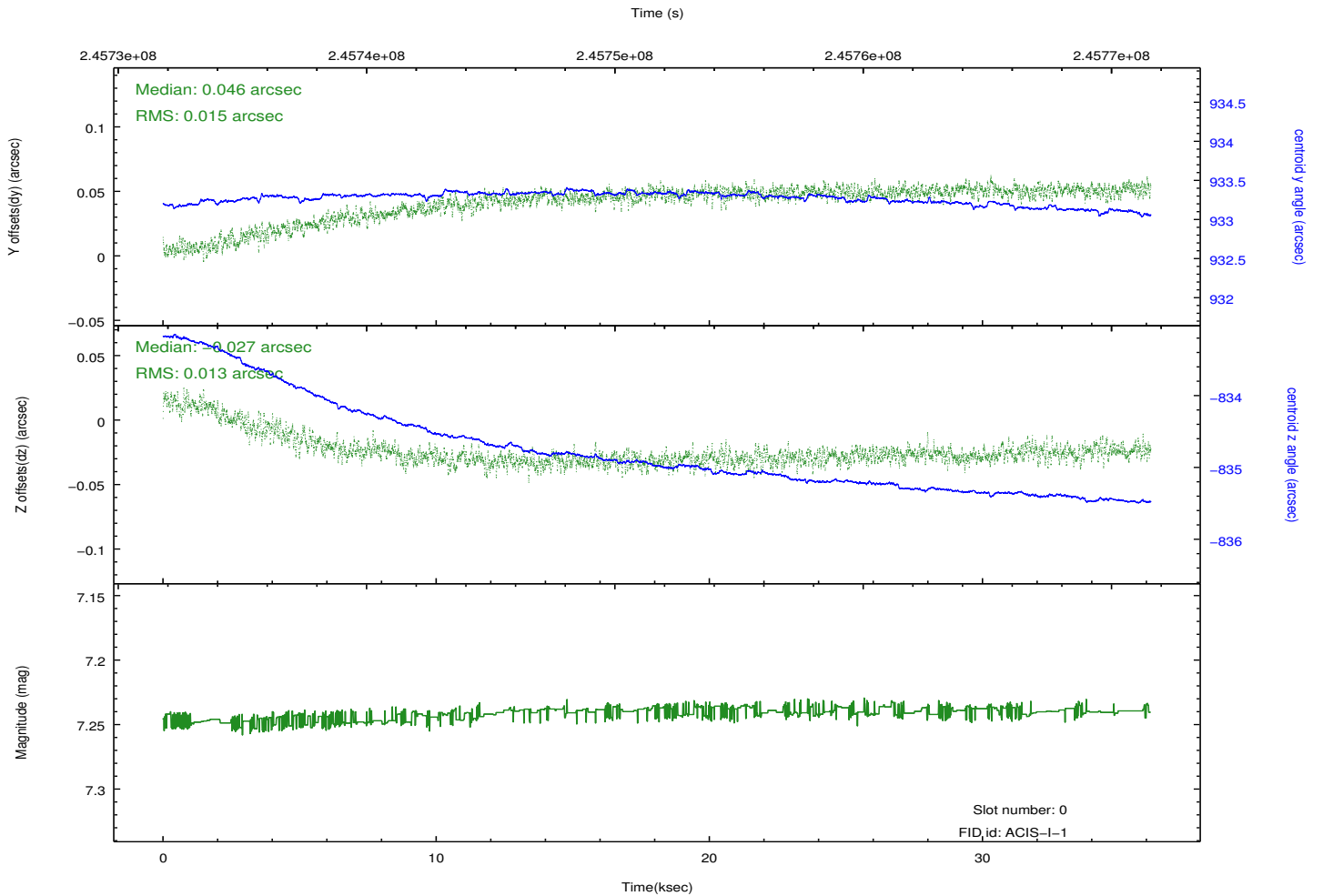
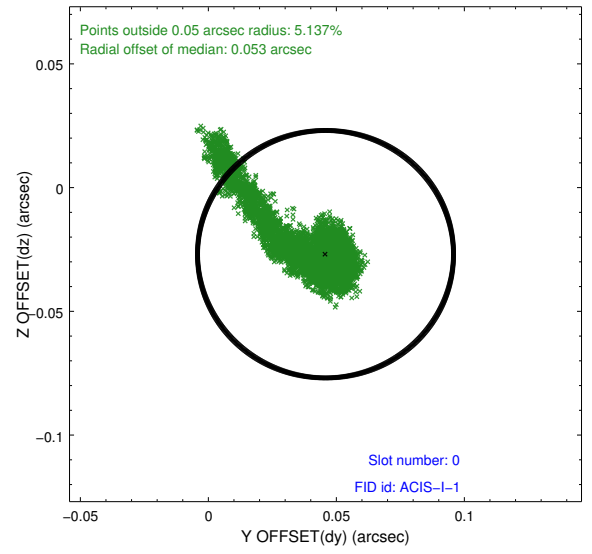
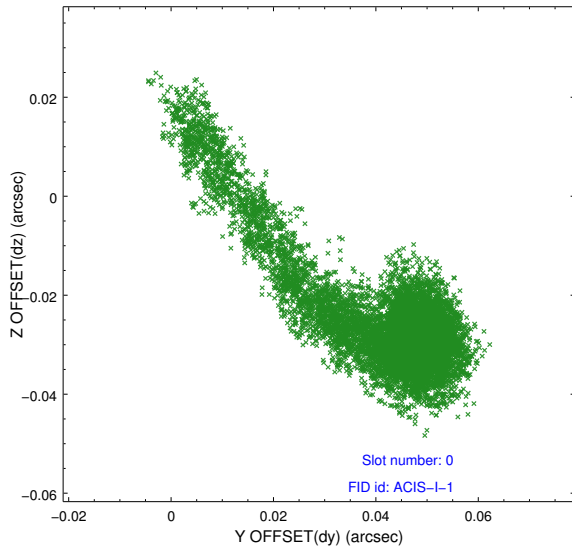


2.4.5 Slot 7

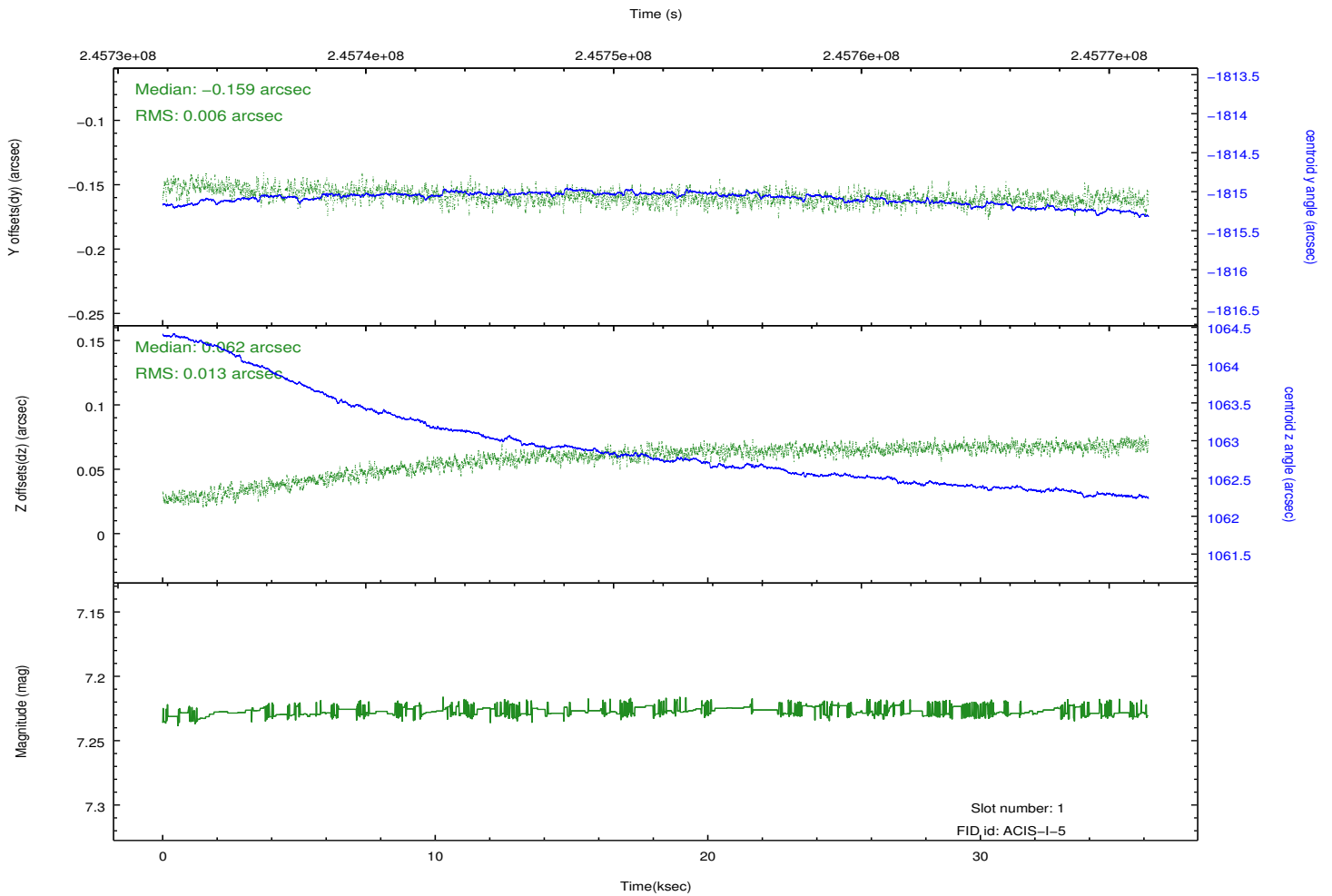
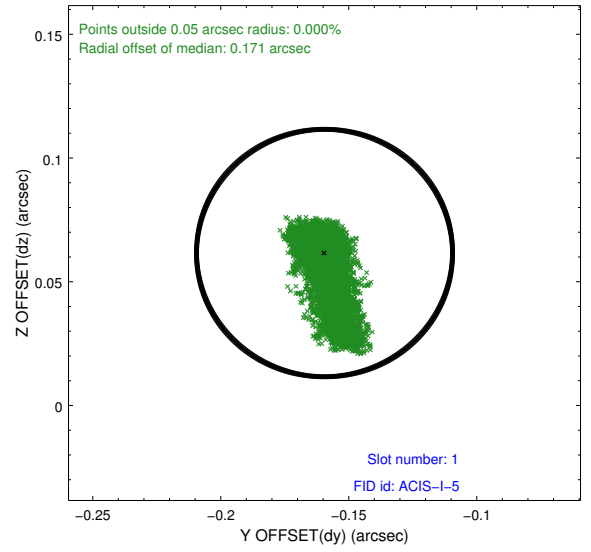
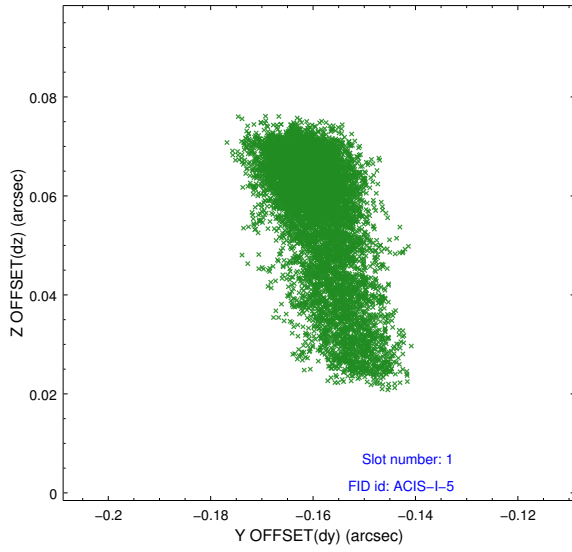


2.5 FID Slots

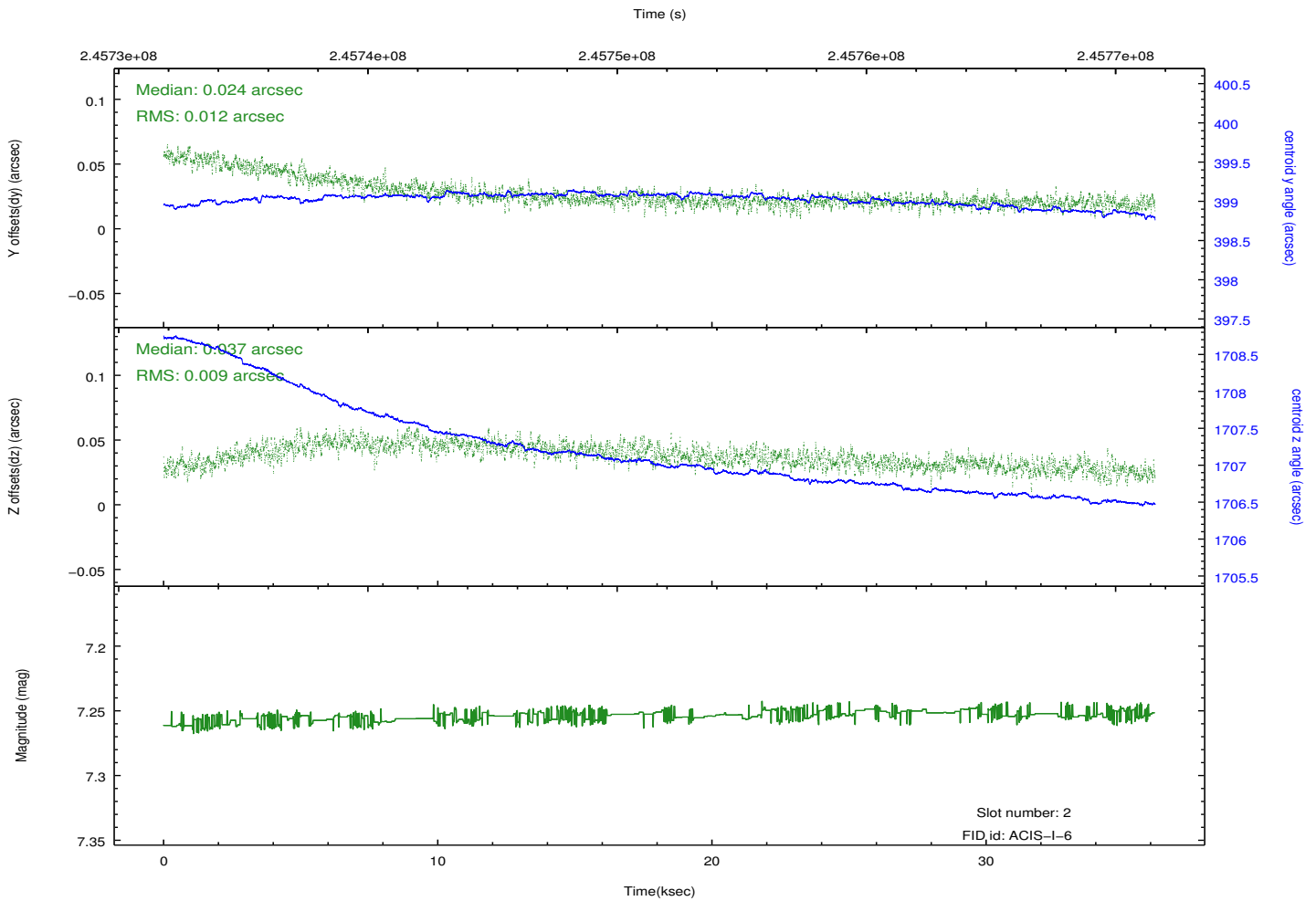
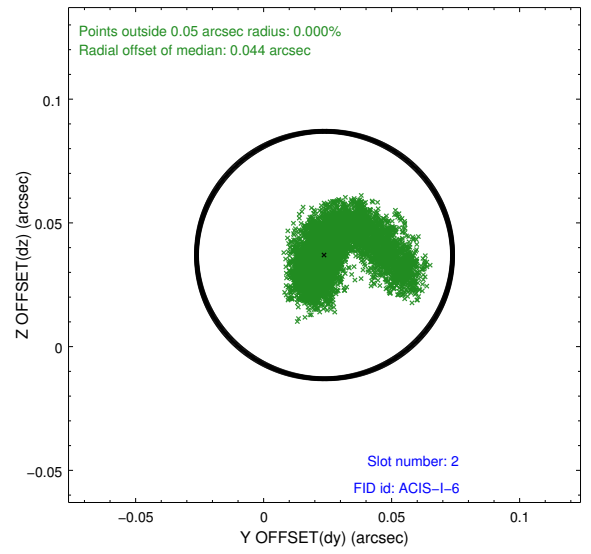
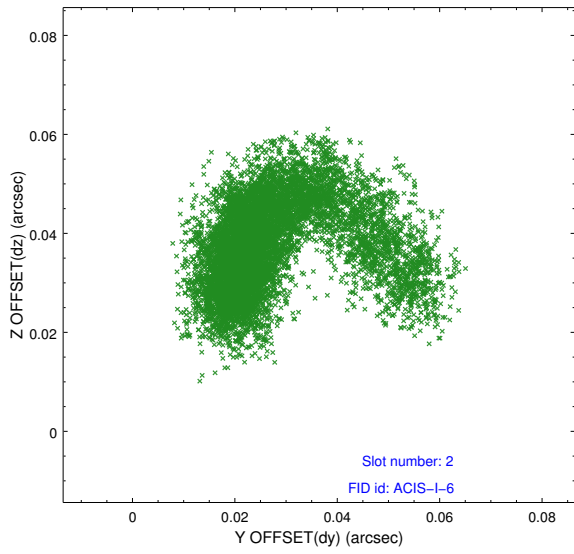
2.5.1 Slot 0



2.5.2 Slot 1



2.5.3 Slot 2



A Summary

A.1 Status

V&V Scientist	Beth Sundheim
V&V Date (YYYY-MM-DD)	2013.03.11
V&V Edition	1
V&V Disposition and Status	OK
V&V Charge Time	36.14901

A.2 Comments

Roll preference met.

As a consequence of the DEA-A shutdown anomaly on Sep 15th (DOY258), the reported value of the ACIS FP temperature was ~1.3 degrees warmer than the actual temperature. The value for FP temperature reported in the headers of the Level 2 event file and the Mission Timeline files are incorrect by this amount for this processing. However, the temperature is corrected in the processing in order to obtain the correct temperature for the CTI correction. So the calibrated data are correct. If using the FP temp values in the headers of data files (some CIAO tools require this information), investigators should subtract 1.3 degrees from the reported temperature to determine the true temperature.