

V&V Reference Report

L2 ASCDS Version : 8.4.3.1

Observation 58711 - L2 Version 2
Chandra X-Ray Center

L2 Processing Date : Apr 12 2012

Contents

1	Front	2
2	OBI	3
2.1	OBI	3
2.1.1	Images	3
2.1.2	Bias	3
2.1.3	Parameters	4
2.1.4	Events	4
2.2	Compared Parameters	5
2.3	Star Slots	6
2.4	FID Slots	6
A	Summary	7
A.1	Status	7
A.2	Comments	7

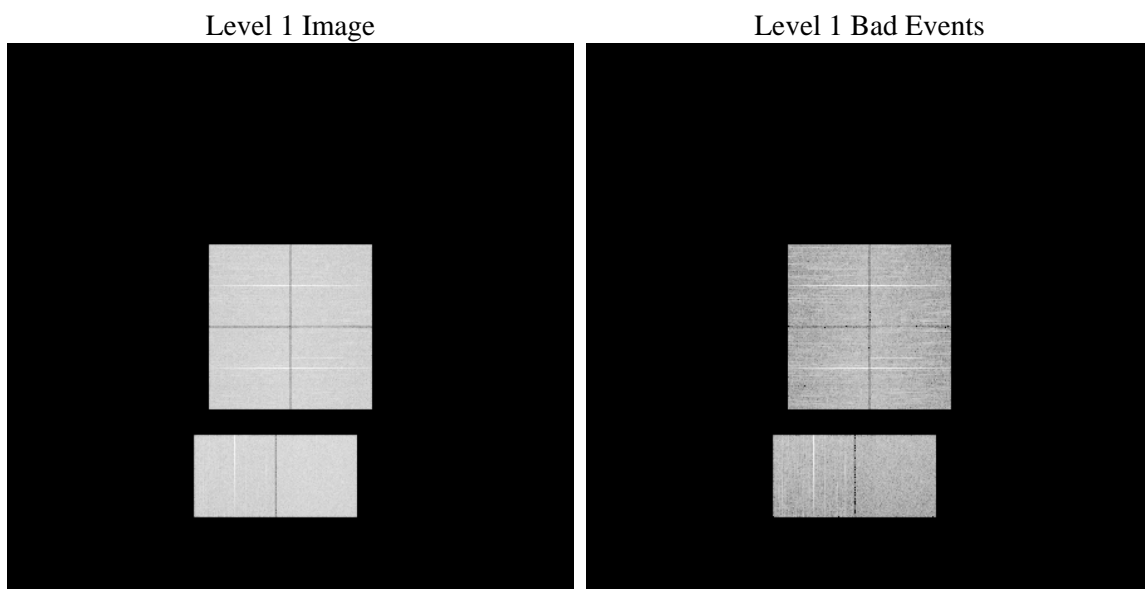
1 Front

seq_num	 	Sequence number
obs_id	58711	Observation id
title	ACIS-012367 diagnostics	Proposal title
observer	CHANDRA engineering request/realtime commanding	Principal investig
object	 	Source name
dtycle	0	
cycle	P	events from which exps? Prim/Second/Both
ra_targ	0.0	Observer's specified target RA [deg]
dec_targ	0.0	Observer's specified target Dec [deg]
ra_nom	13.021651184858	Nominal RA [deg]
dec_nom	9.9809424708889	Nominal Dec [deg]
roll_nom	285.34466972676	Nominal Roll [deg]
revision	2	Processing version of data
ontime	8271.999969244	Sum of GTIs [s]
livetime	8167.254924833	Livetime [s]
ontime0	8271.999969244	Sum of GTIs [s]
ontime1	8271.999969244	Sum of GTIs [s]
ontime2	8271.999969244	Sum of GTIs [s]
ontime3	8271.999969244	Sum of GTIs [s]
ontime6	8268.7589590549	Sum of GTIs [s]
ontime7	8271.999969244	Sum of GTIs [s]
l2events	831603	Number of level 2 events

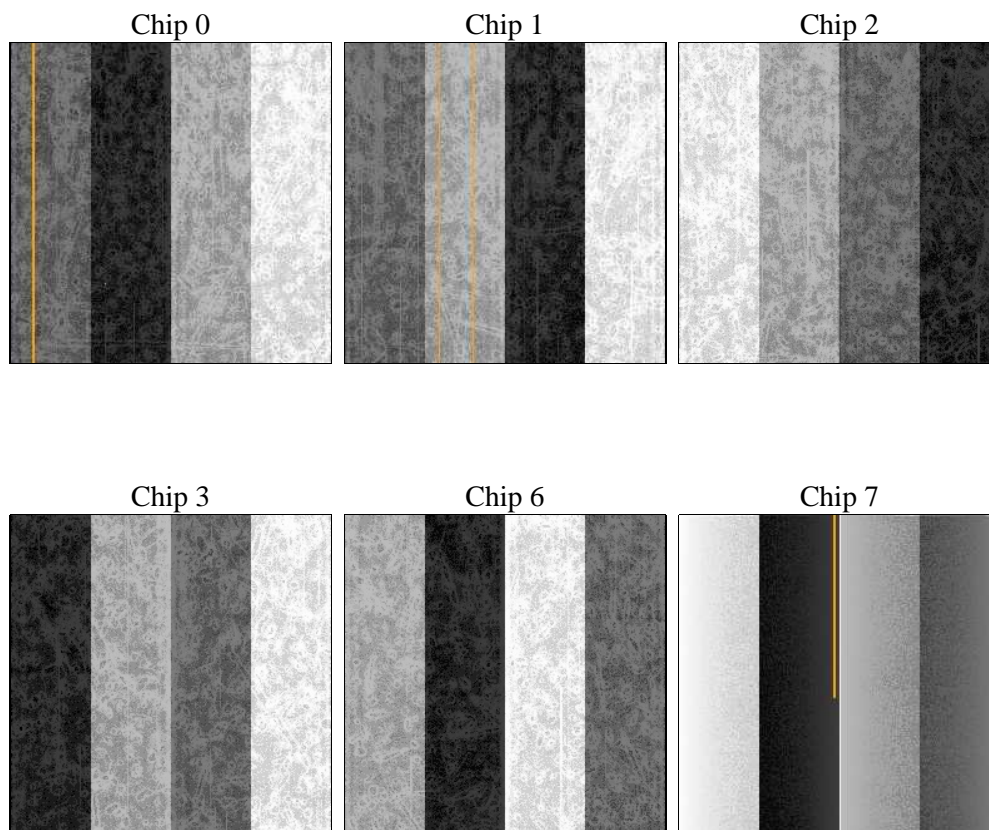
2 OBI

2.1 OBI

2.1.1 Images



2.1.2 Bias



2.1.3 Parameters

obi_num	0	Obi number	sched_exp_time	0.0	[s] Scheduled observation exposure time
ascdsver	8.4.3.1	Processing system revision	ontime	8271.999969244	Sum of GTIs [s]
caldbver	4.4.9	 	ontime0	8271.999969244	Sum of GTIs [s]
date	2012-04-13T02:02:19	Date and time of file creation	ontime1	8271.999969244	Sum of GTIs [s]
revision	2	Processing version of data	ontime2	8271.999969244	Sum of GTIs [s]
			ontime3	8271.999969244	Sum of GTIs [s]
			ontime6	8268.7589590549	Sum of GTIs [s]
			ontime7	8271.999969244	Sum of GTIs [s]
			l1events	1292747	Number of level 1 events

2.1.4 Events

	ccd 0	ccd 1	ccd 2	ccd 3	ccd 6	ccd 7		ccd 0	ccd 1	ccd 2	ccd 3	ccd 6	ccd 7
level 1 events	208644	206524	213105	212189	217490	234795	grade 0 events	75389	75523	77670	77770	77612	37614
rejected events	70006	66776	72993	72537	72389	62076		36%	36%	36%	36%	35%	16%
rejected %	33%	32%	34%	34%	33%	26%	grade 1 events	510	459	608	571	463	174
								0%	0%	0%	0%	0%	0%
							grade 2 events	24440	25169	23805	23556	25465	37379
								11%	12%	11%	11%	11%	15%
							grade 3 events	9250	8993	9340	9204	9120	16948
								4%	4%	4%	4%	4%	7%
							grade 4 events	9094	9091	9294	9365	9394	16704
								4%	4%	4%	4%	4%	7%
							grade 5 events	3887	4030	3652	4145	4203	10587
								1%	1%	1%	1%	1%	4%
							grade 6 events	20522	21020	20061	19800	23577	64136
								9%	10%	9%	9%	10%	27%
							grade 7 events	65552	62239	68675	67778	67656	51253
								31%	30%	32%	31%	31%	21%

2.2 Compared Parameters

Parameter	Planned	Actual	Parameter	Planned	Actual
Instrument	ACIS	ACIS	Obspar format version number	7	7
Detector	ACIS-012367	ACIS-012367	Obspar file type	PREDICTED	ACTUAL
Grating	NONE	NONE	Obspar update status	NONE	UPDATED
Data mode	FAINT	FAINT	On-chip summing requested	N	N
Observation mode	SECONDARY	SECONDARY	Subarray requested	NONE	NONE
[deg] Pointing RA	0	13.02165118485831	Alternating exposures requested	N	N
[deg] Pointing Dec	0	9.980942470888872	[s] Primary exposure time	3.2	3.2
[deg] Pointing Roll	0.0	285.344669726757			
[mm] SIM focus pos	-0.782348	-0.6828225247311905			
[mm] SIM defocus	0	0.8505141146731063			
[mm] SIM translation stage pos	-233.592463	250.466033080201			
[mm] SIM translation stage offset	0	-0.01005468664627074			
[s] Observation start time (MET)	279214920.479008	279214919.45402			
Observation start date	2006-11-06T15:42:00	2006-11-06T15:41:59			
[s] Observation end time (MET)	279237946.080095	279237945.0551			
Observation end date	2006-11-06T22:05:46	2006-11-06T22:05:45			
Read mode	TIMED	TIMED			

2.3 Star Slots

2.4 FID Slots

A Summary

A.1 Status

V&V Scientist	Beth Sundheim
V&V Date (YYYY-MM-DD)	2012.04.13
V&V Edition	1
V&V Disposition and Status	OK
V&V Charge Time	8.271999969244

A.2 Comments