

V&V Reference Report

L2 ASCDS Version : 8.5.1.1

Observation 5891 - L2 Version 3
Chandra X-Ray Center

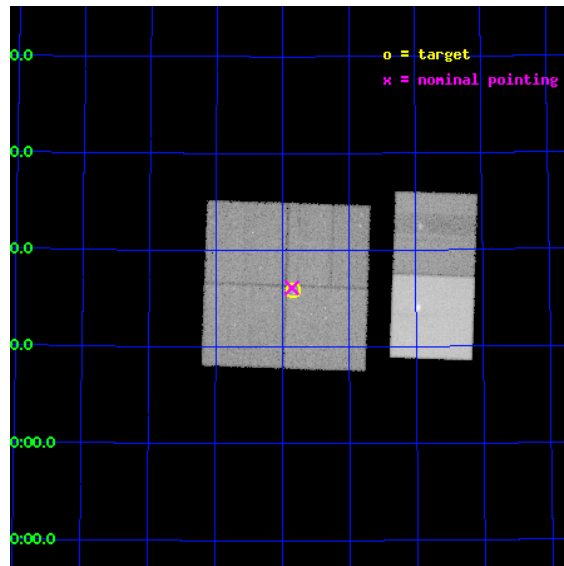
L2 Processing Date : Dec 26 2012

Contents

1	Front	2
2	OBI	3
2.1	OBI	3
2.1.1	Images	3
2.1.2	Bias	3
2.1.3	Parameters	4
2.1.4	Events	4
2.2	Compared Parameters	5
2.3	Aspect	6
2.4	Star Slots	9
2.4.1	Slot 3	9
2.4.2	Slot 4	10
2.4.3	Slot 5	11
2.4.4	Slot 6	12
2.4.5	Slot 7	13
2.5	FID Slots	14
2.5.1	Slot 0	14
2.5.2	Slot 1	15
2.5.3	Slot 2	16
A	Summary	17
A.1	Status	17
A.2	Comments	17

1 Front

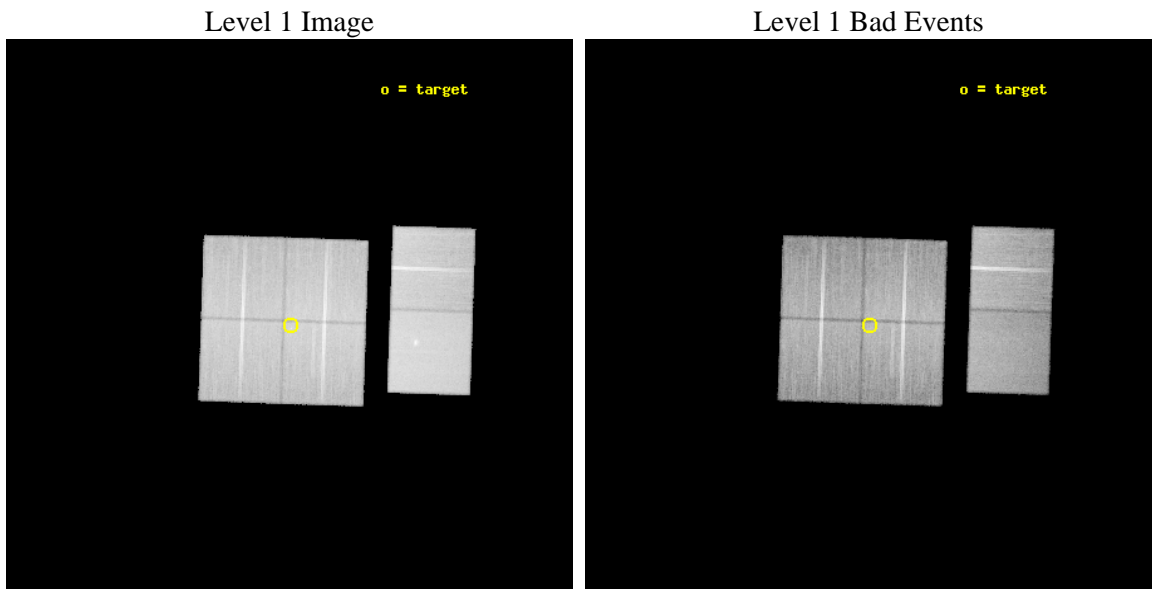
seq_num	900391	Sequence number
obs_id	5891	Observation id
title	Massive Star Life, Death, and Rebirth in the Perseus Arm	Proposal
observer	Dr. Leisa Townsley	Principal investigator
object	W3 North	Source name
dtycycle	0	
cycle	P	events from which exps? Prim/Second/Both
ra_targ	36.711667	Observer's specified target RA [deg]
dec_targ	62.264444	Observer's specified target Dec [deg]
ra_nom	36.715266776494	Nominal RA [deg]
dec_nom	62.268784844355	Nominal Dec [deg]
roll_nom	91.92656750851	Nominal Roll [deg]
revision	3	Processing version of data
ontime	47155.158864051	Sum of GTIs [s]
livetime	46558.051849087	Livetime [s]
ontime0	47155.158854038	Sum of GTIs [s]
ontime1	47158.399824321	Sum of GTIs [s]
ontime2	47151.917883754	Sum of GTIs [s]
ontime3	47155.158864051	Sum of GTIs [s]
ontime6	47158.399824321	Sum of GTIs [s]
ontime7	47158.399824321	Sum of GTIs [s]
l2events	432533	Number of level 2 events



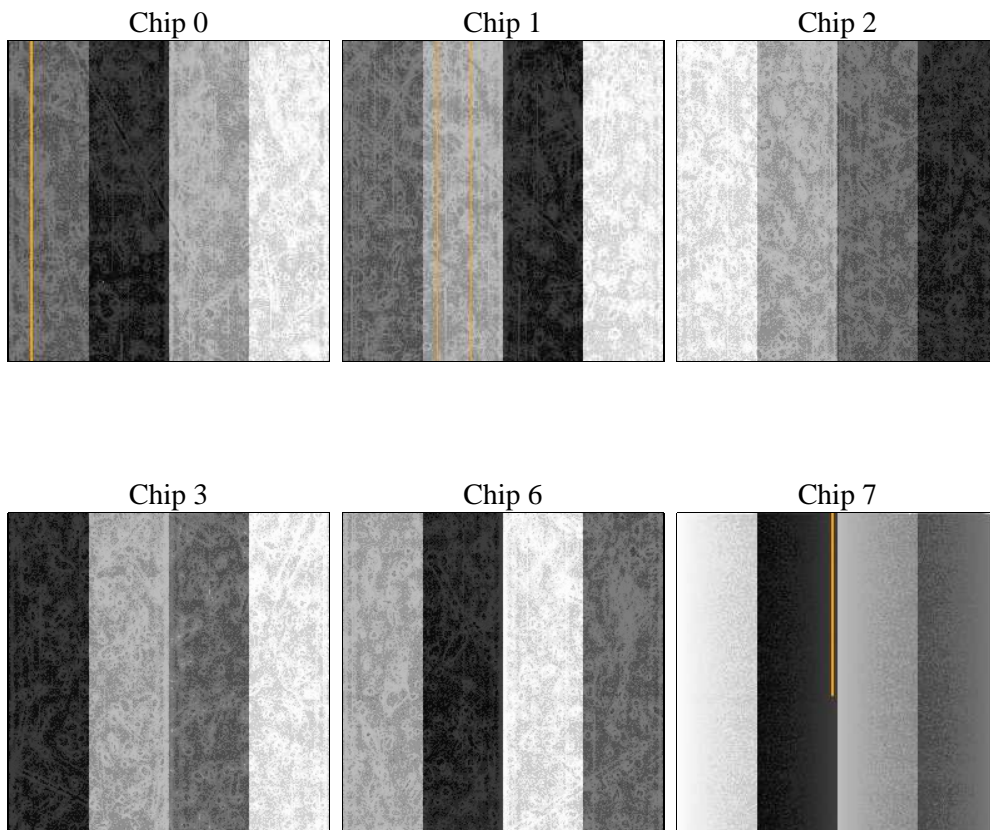
2 OBI

2.1 OBI

2.1.1 Images



2.1.2 Bias



2.1.3 Parameters

obi_num	1	Obi number	sched_exp_time	47032.045000	[s] Scheduled observation exposure time
ascdsver	8.5.1.1	Processing system revision	ontime	47155.158864051	Sum of GTIs [s]
caldbver	4.5.5	 	ontime0	47155.158854038	Sum of GTIs [s]
date	2012-12-26T14:20:56	Date and time of file creation	ontime1	47158.399824321	Sum of GTIs [s]
revision	3	Processing version of data	ontime2	47151.917883754	Sum of GTIs [s]
			ontime3	47155.158864051	Sum of GTIs [s]
			ontime6	47158.399824321	Sum of GTIs [s]
			ontime7	47158.399824321	Sum of GTIs [s]
			l1events	2158166	Number of level 1 events

2.1.4 Events

	ccd 0	ccd 1	ccd 2	ccd 3	ccd 6	ccd 7		ccd 0	ccd 1	ccd 2	ccd 3	ccd 6	ccd 7
level 1 events	315199	323709	349471	342757	366523	460507	grade 0 events	24734	22756	26214	24875	23188	20298
rejected events	261597	269215	295113	290388	312877	253015		7%	7%	7%	7%	6%	4%
rejected %	82%	83%	84%	84%	85%	54%	grade 1 events	228	169	240	238	186	518
								0%	0%	0%	0%	0%	0%
							grade 2 events	12259	13032	11670	10684	12386	42571
								3%	4%	3%	3%	3%	9%
							grade 3 events	3991	4429	3803	4093	4109	18570
								1%	1%	1%	1%	1%	4%
							grade 4 events	3955	4231	4400	4034	4048	18459
								1%	1%	1%	1%	1%	4%
							grade 5 events	12995	13553	12463	14458	15222	41399
								4%	4%	3%	4%	4%	8%
							grade 6 events	8917	10322	8542	8909	10177	108538
								2%	3%	2%	2%	2%	23%
							grade 7 events	248120	255217	282139	275466	297207	210154
								78%	78%	80%	80%	81%	45%

2.2 Compared Parameters

Parameter	Planned	Actual	Parameter	Planned	Actual
Instrument	ACIS	ACIS	Obspar format version number	7	7
Detector	ACIS-012367	ACIS-012367	Obspar file type	PREDICTED	ACTUAL
Grating	NONE	NONE	Obspar update status	NONE	UPDATED
Data mode	VFAINT	VFAINT	Number of optional ACIS chips dropped	0	0
Observation mode	POINTING	POINTING	On-chip summing requested	N	N
[deg] Pointing RA	36.746534	36.71526677649365	Subarray requested	NONE	NONE
[deg] Pointing Dec	62.245585	62.26878484435542	Alternating exposures requested	N	N
[deg] Pointing Roll	91.690212	91.92656750850968	[s] Primary exposure time	0.000000	3.2
[mm] SIM focus pos	-0.782348	-0.7809083437167272			
[mm] SIM defocus	0	0.001439871863259334			
[mm] SIM translation stage pos	-233.592463	-233.5874344608287			
[mm] SIM translation stage offset	0	-0.005018542100998502			
[s] Observation start time (MET)	238000310.184000	237999158.11265			
Observation start date	2005-07-17T15:10:46	2005-07-17T14:52:38			
[s] Observation end time (MET)	238047342.184000	238047566.81487			
Observation end date	2005-07-18T04:14:38	2005-07-18T04:19:26			
Read mode	TIMED	TIMED			

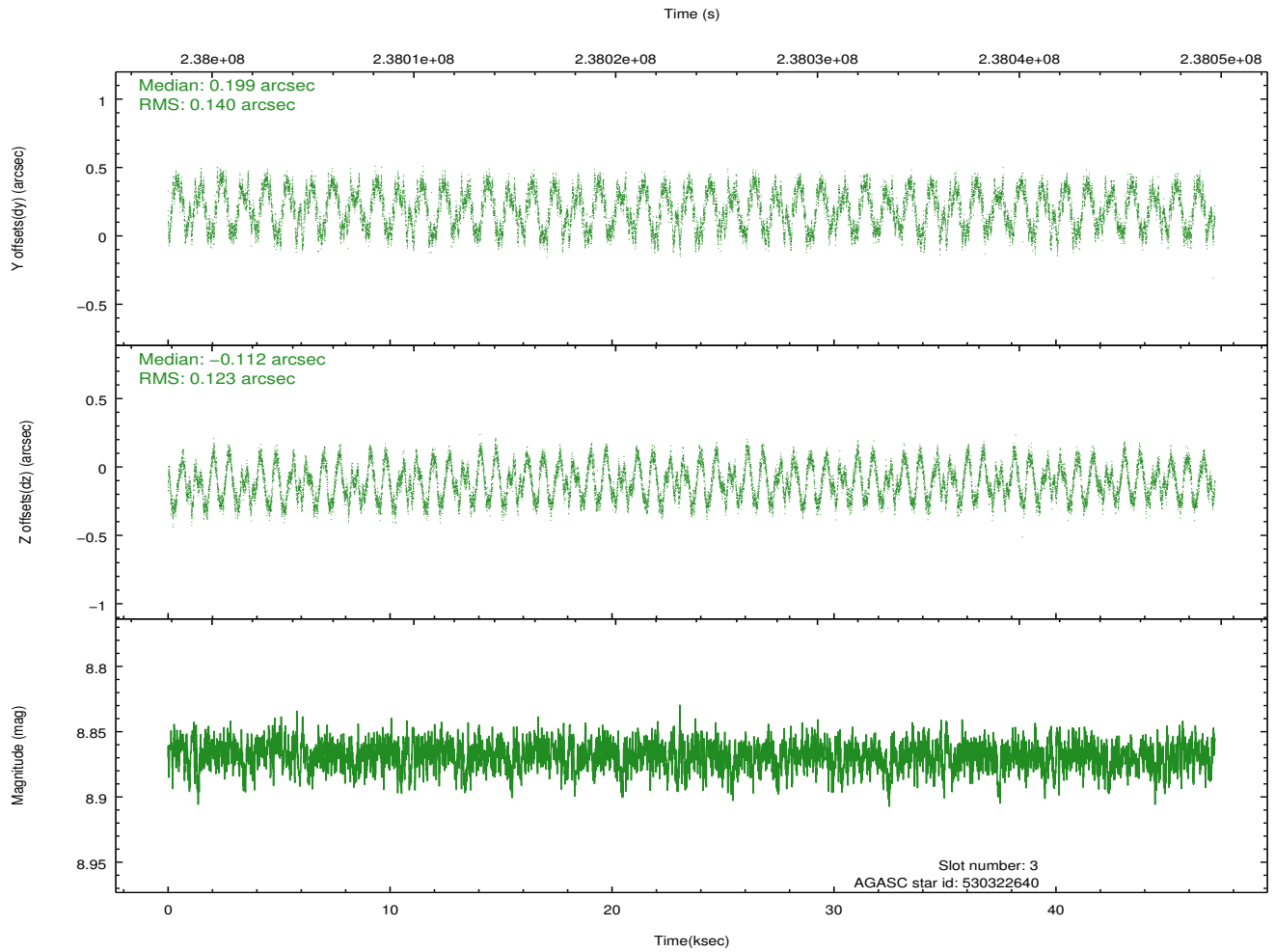
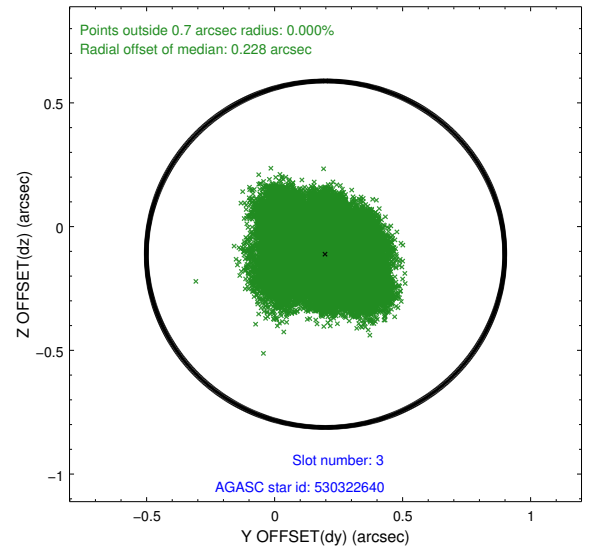
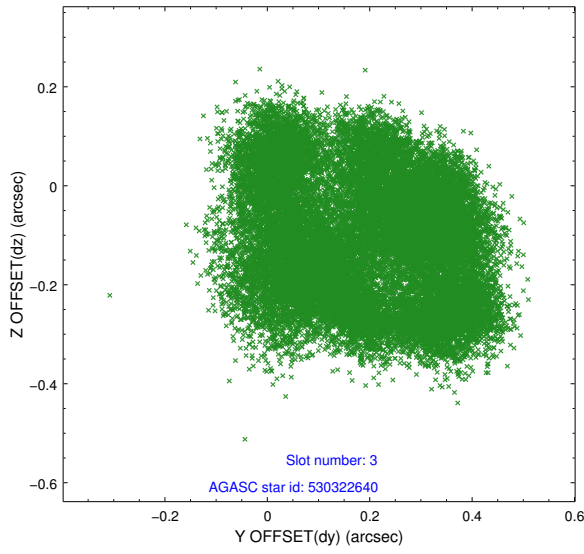
2.3 Aspect

Slot Statistics

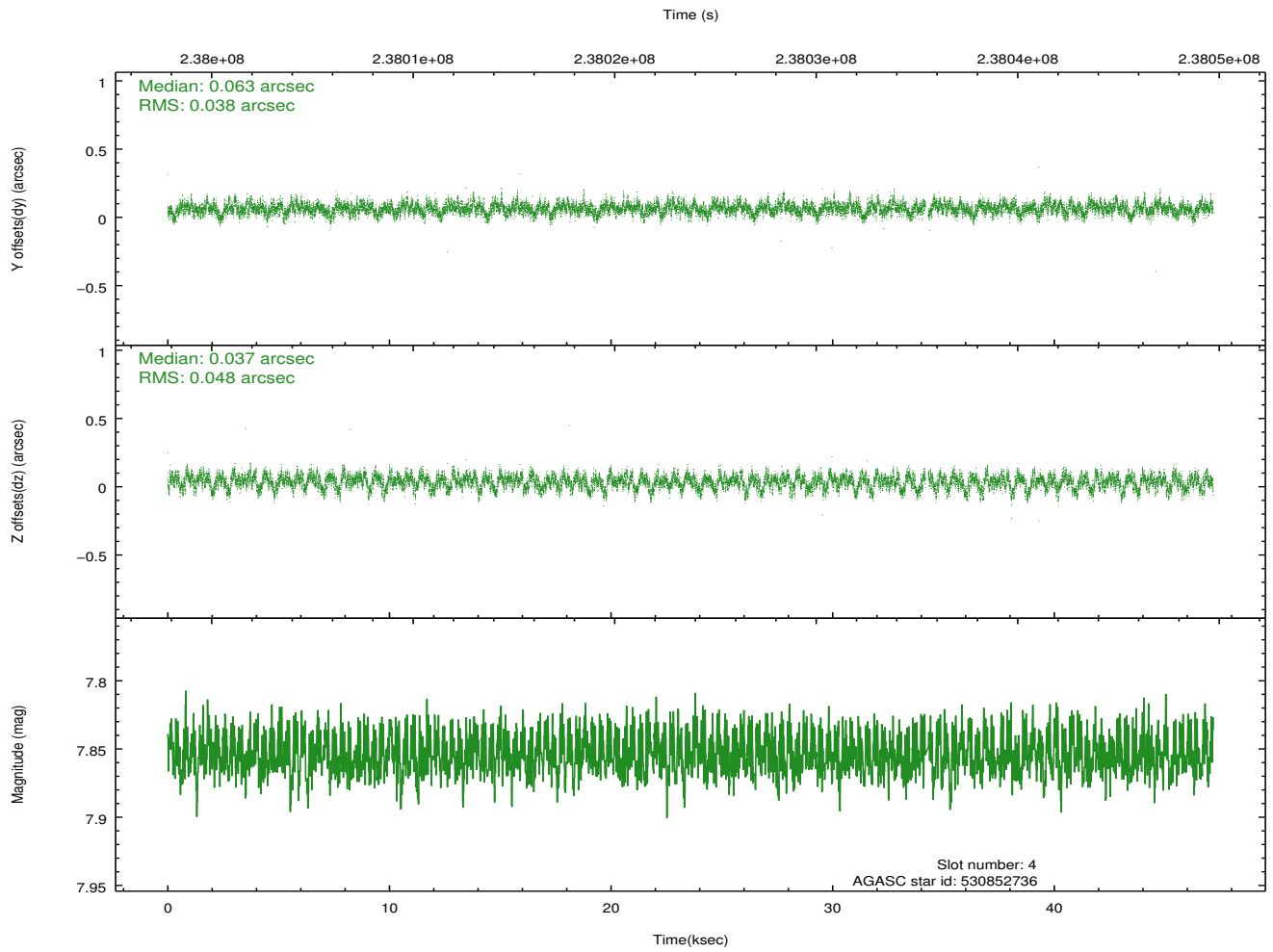
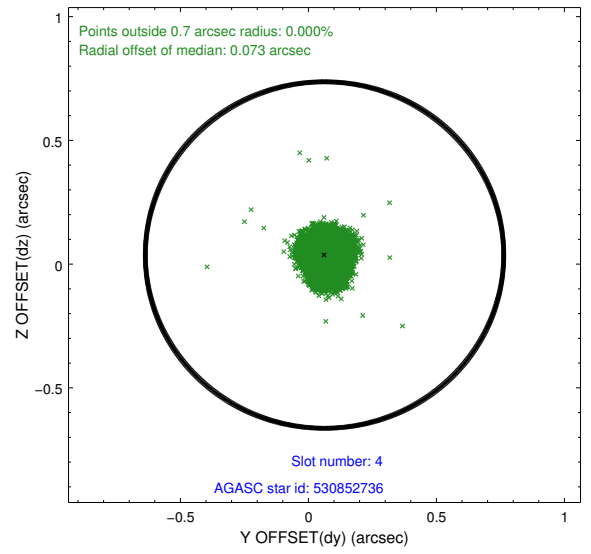
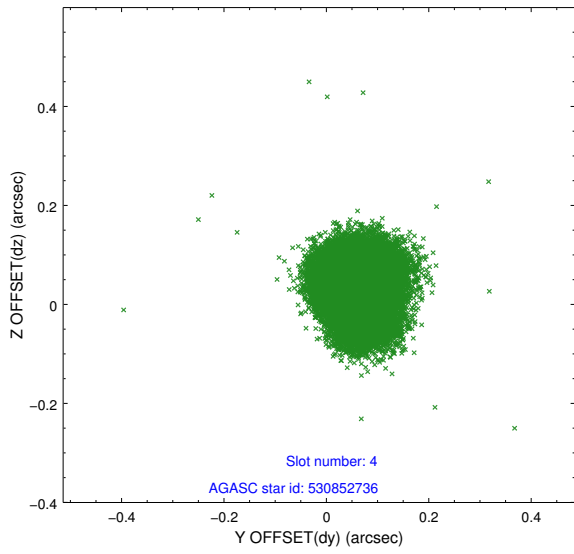
slot	status	id	mag	n_pts	med_dy	med_dz	dr1	dr2	ra	dec	mean_y	mean_z
0	FID	ACIS-I-1	7.24	11502	0.050	-0.030	0.011	0.064	0.000000	0.000000	932.70	-834.90
1	FID	ACIS-I-5	7.23	11503	-0.176	0.060	0.010	0.041	0.000000	0.000000	-1815.59	1062.73
2	FID	ACIS-I-6	7.25	11500	0.037	0.040	0.010	0.023	0.000000	0.000000	398.31	1707.16
3	GUIDE	530322640	8.87	23001	0.199	-0.112	0.208	0.284	35.878914	61.773652	-1644.75	1526.34
4	GUIDE	530852736	7.85	22945	0.063	0.037	0.066	0.106	37.086329	62.219010	-110.48	-567.63
5	GUIDE	530862896	8.90	23002	0.001	-0.155	0.091	0.144	35.753276	62.216485	-42.96	1668.83
6	GUIDE	530330080	8.81	22998	0.006	0.080	0.096	0.150	37.987862	61.612207	-2321.21	-2056.71
7	GUIDE	530850752	7.41	23006	-0.266	0.150	0.080	0.125	36.960051	62.890600	2310.95	-418.22

2.4 Star Slots

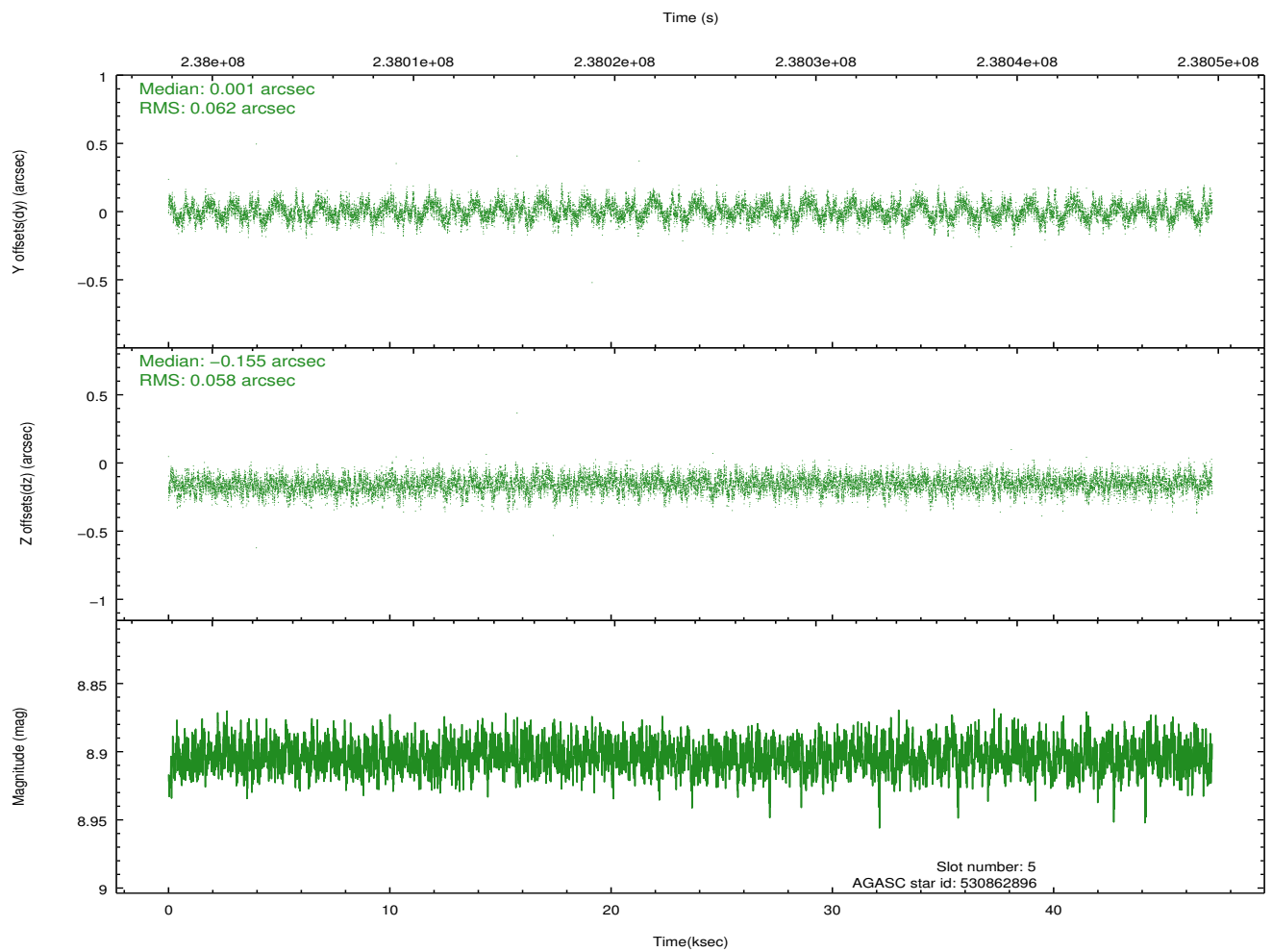
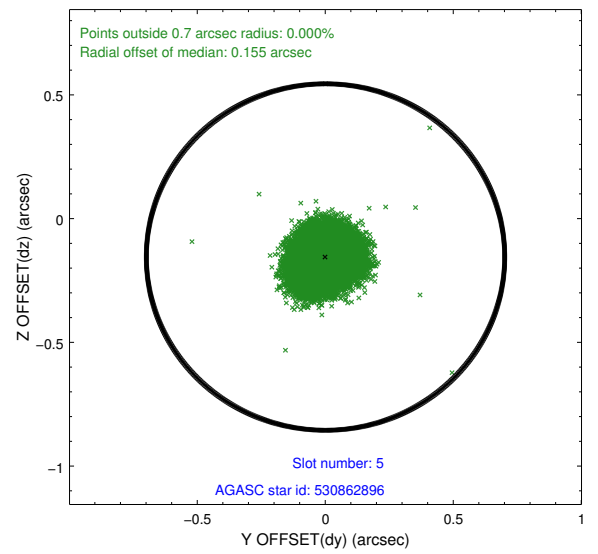
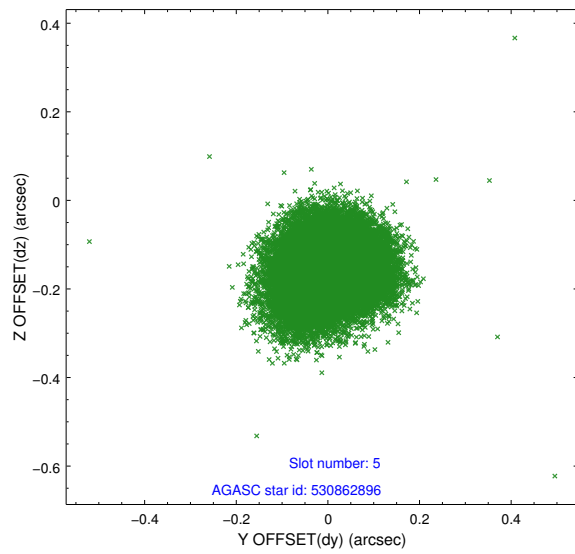
2.4.1 Slot 3



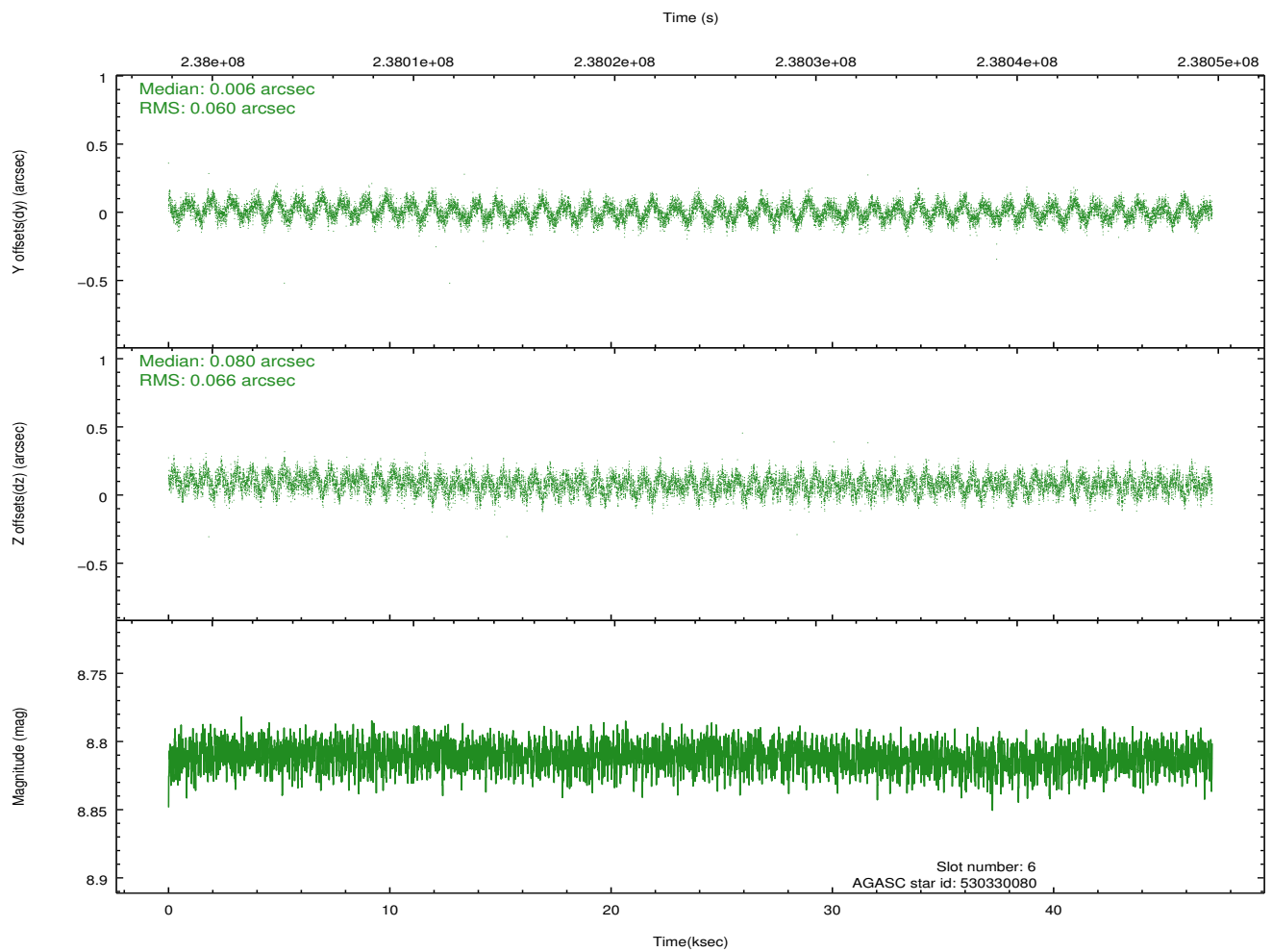
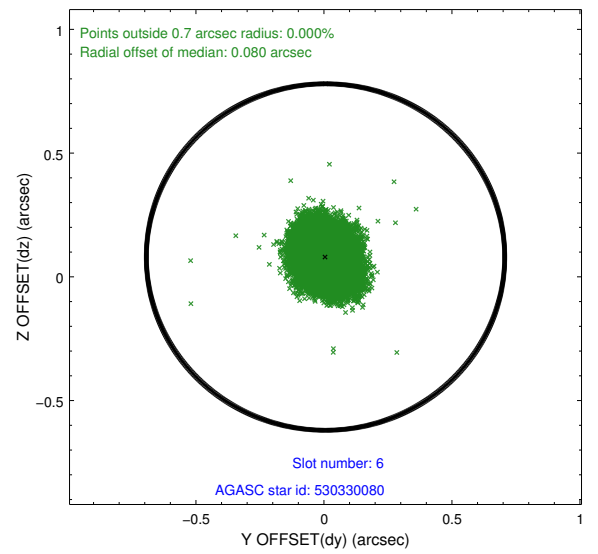
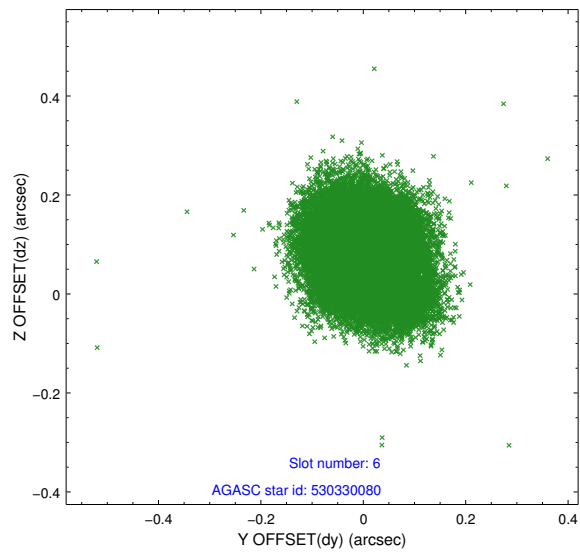
2.4.2 Slot 4



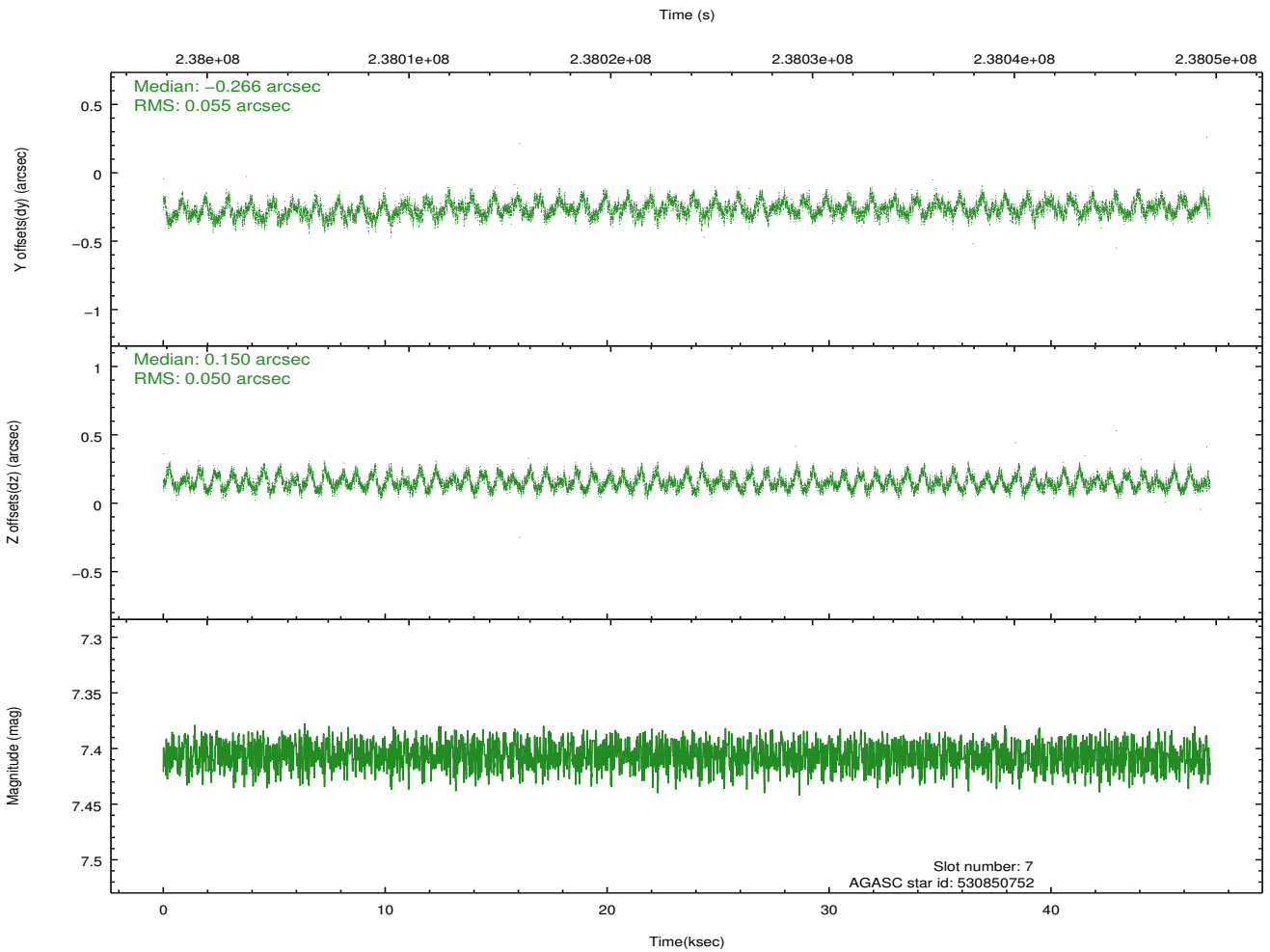
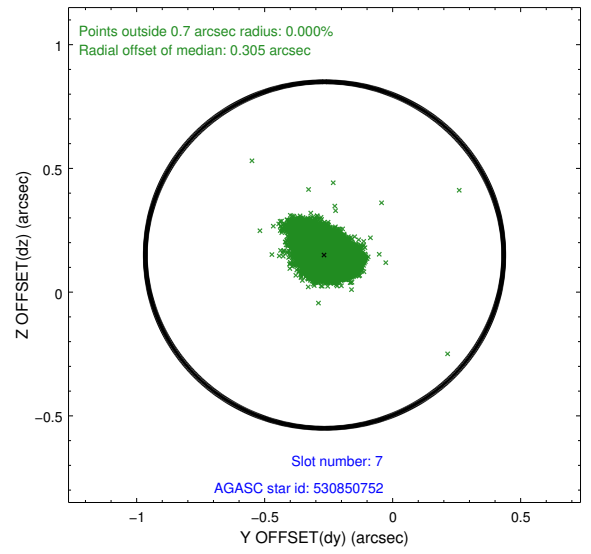
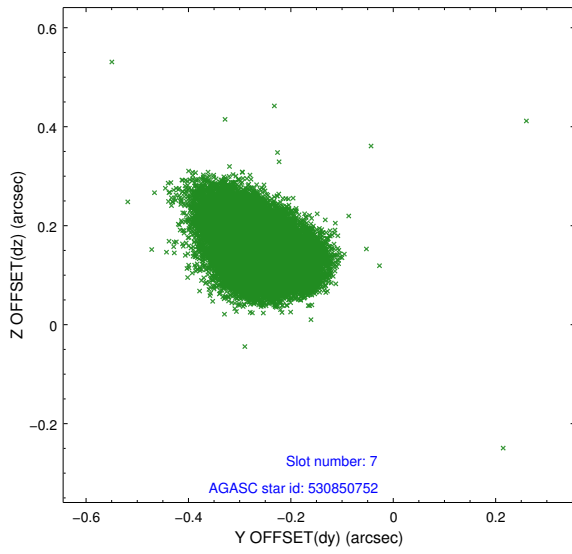
2.4.3 Slot 5



2.4.4 Slot 6

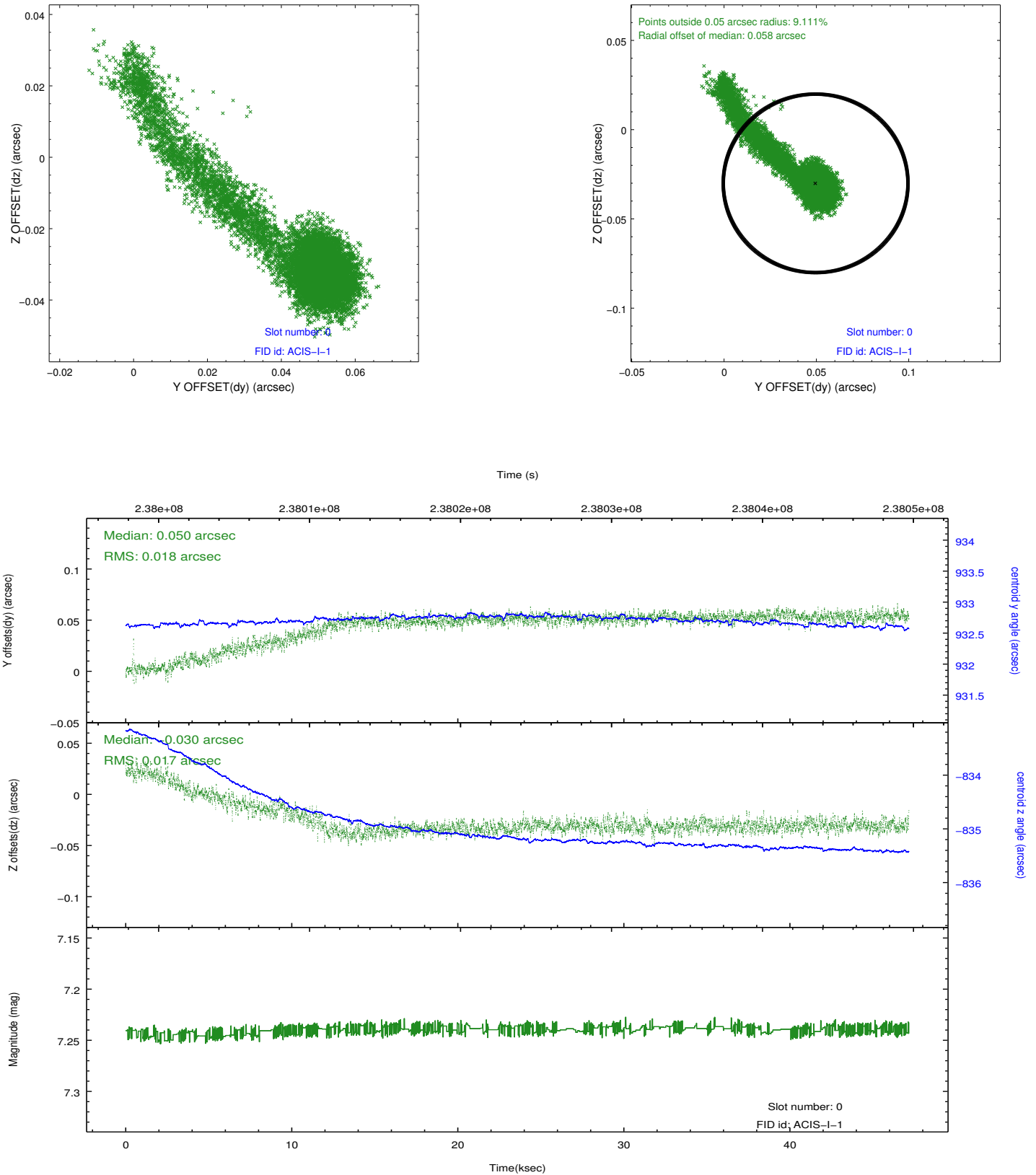


2.4.5 Slot 7

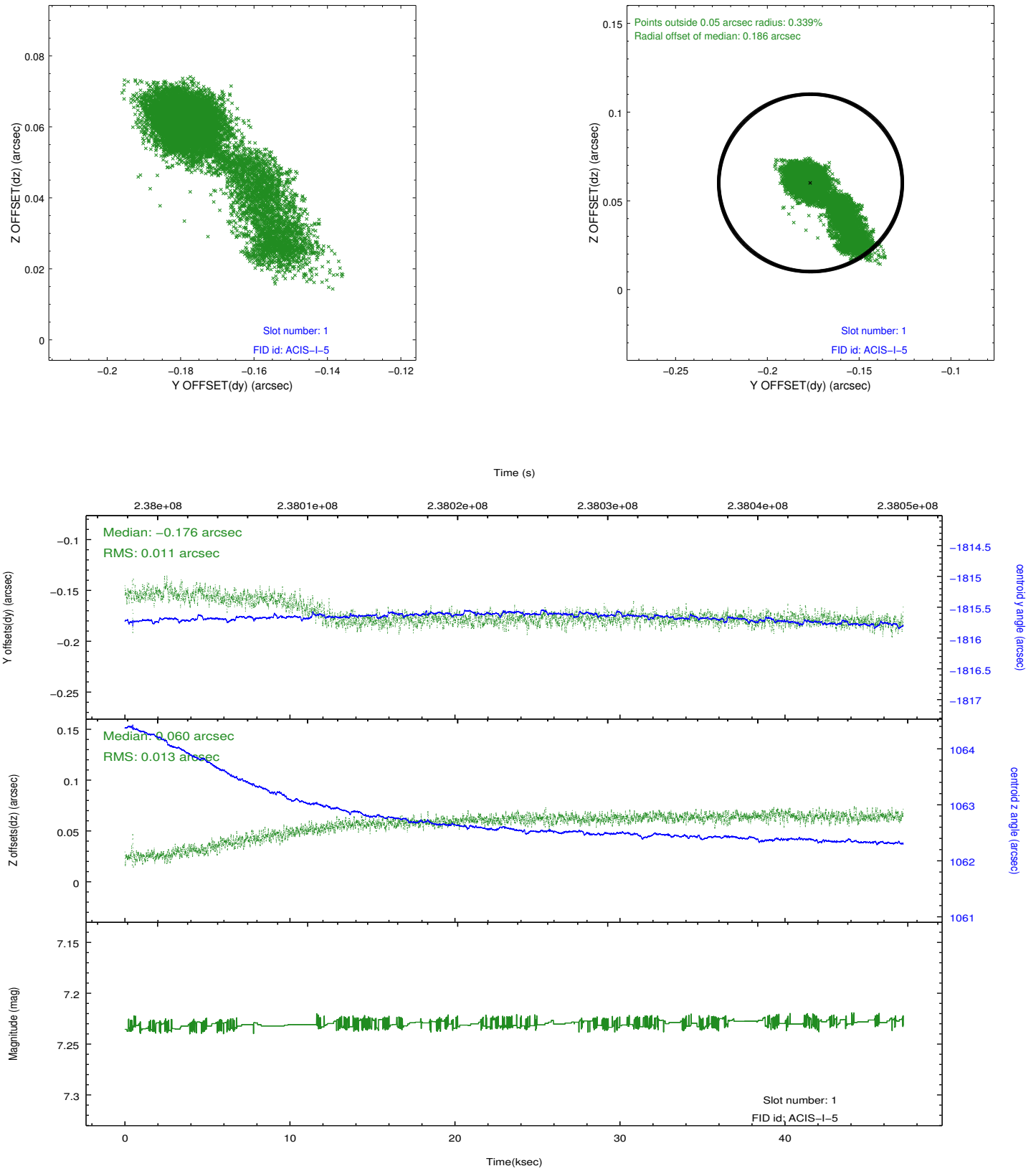


2.5 FID Slots

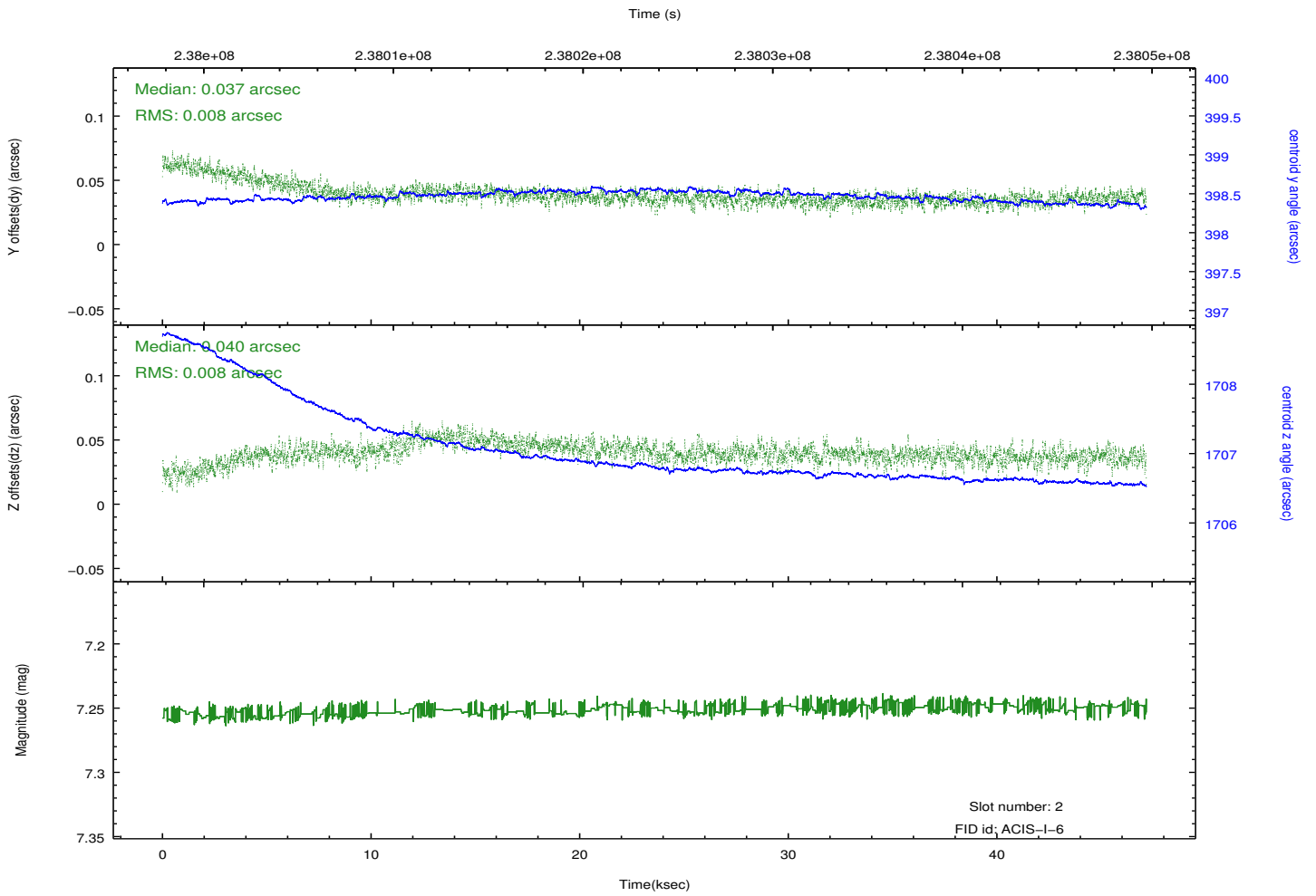
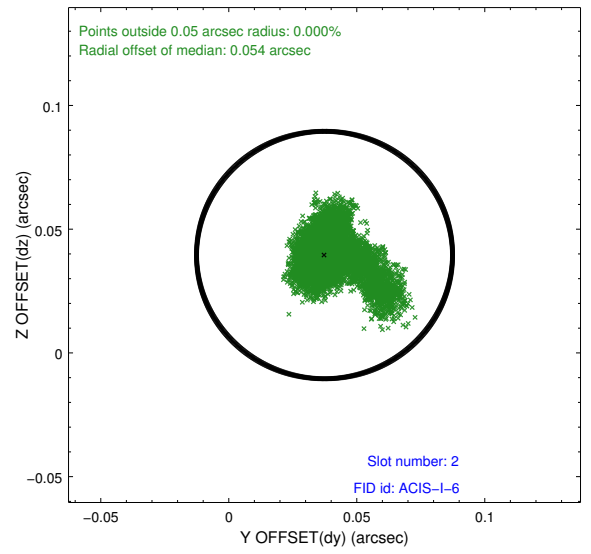
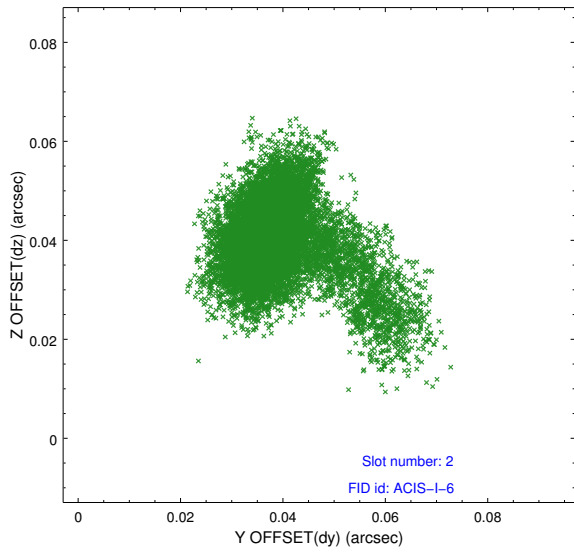
2.5.1 Slot 0



2.5.2 Slot 1



2.5.3 Slot 2



A Summary

A.1 Status

V&V Scientist	Jen Lauer
V&V Date (YYYY-MM-DD)	2013.01.23
V&V Edition	1
V&V Disposition and Status	OK
V&V Charge Time	47.15515

A.2 Comments

Joint Proposal: XMM