

# V&V Reference Report

## L2 ASCDS Version : 8.4.3.1

Observation 5911 - L2 Version 2  
Chandra X-Ray Center

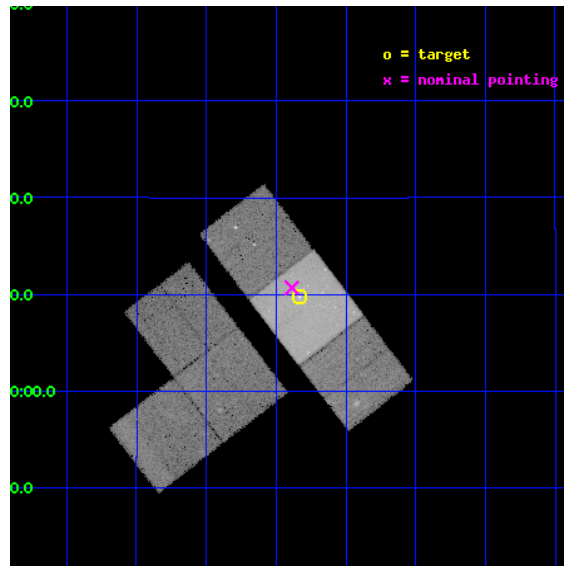
L2 Processing Date : Mar 22 2012

## Contents

<b>1</b>	<b>Front</b>	<b>2</b>
<b>2</b>	<b>OBI</b>	<b>3</b>
2.1	OBI . . . . .	3
2.1.1	Images . . . . .	3
2.1.2	Bias . . . . .	3
2.1.3	Parameters . . . . .	4
2.1.4	Events . . . . .	4
2.2	Compared Parameters . . . . .	5
2.3	Aspect . . . . .	6
2.4	Star Slots . . . . .	9
2.4.1	Slot 3 . . . . .	9
2.4.2	Slot 4 . . . . .	10
2.4.3	Slot 5 . . . . .	11
2.4.4	Slot 6 . . . . .	12
2.4.5	Slot 7 . . . . .	13
2.5	FID Slots . . . . .	14
2.5.1	Slot 0 . . . . .	14
2.5.2	Slot 1 . . . . .	15
2.5.3	Slot 2 . . . . .	16
<b>A</b>	<b>Summary</b>	<b>17</b>
A.1	Status . . . . .	17
A.2	Comments . . . . .	17

# 1 Front

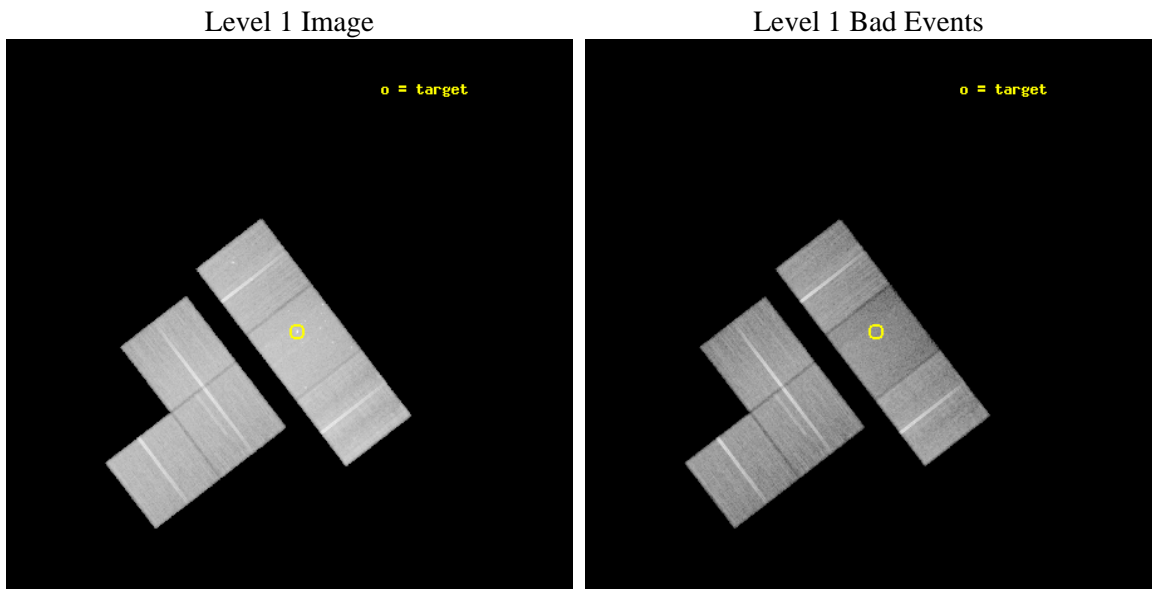
seq_num	600430	Sequence number
obs_id	5911	Observation id
title	Ram Pressure Stripping of the Virgo Spiral NGC 4569 (M90)	Proposal
observer	prof jeffrey kenney	Principal investigator
object	NGC 4569	Source name
dtycycle	0	&#160
cycle	P	events from which exps? Prim/Second/Both
ra_targ	189.2075	Observer's specified target RA [deg]
dec_targ	13.162778	Observer's specified target Dec [deg]
ra_nom	189.22185695406	Nominal RA [deg]
dec_nom	13.17812702868	Nominal Dec [deg]
roll_nom	52.432414629461	Nominal Roll [deg]
revision	2	Processing version of data
ontime	39647.9998523	Sum of GTIs [s]
liveltime	39145.953005011	Livetime [s]
ontime1	39641.518001378	Sum of GTIs [s]
ontime2	39635.036040962	Sum of GTIs [s]
ontime3	39641.517891824	Sum of GTIs [s]
ontime6	39647.9998523	Sum of GTIs [s]
ontime7	39647.9998523	Sum of GTIs [s]
ontime8	39647.9998523	Sum of GTIs [s]
l2events	282132	Number of level 2 events



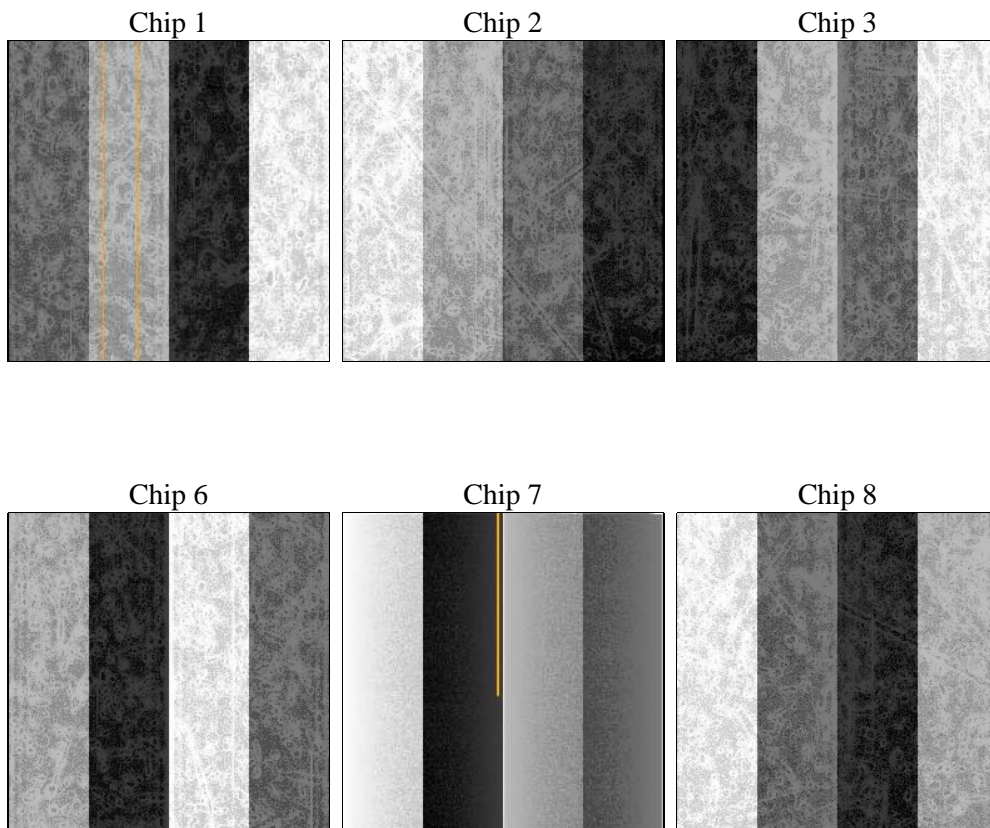
## 2 OBI

### 2.1 OBI

#### 2.1.1 Images



#### 2.1.2 Bias



### 2.1.3 Parameters

obi_num	0	Obi number	sched_exp_time	39468.115000	[s] Scheduled observation exposure time
ascdsver	8.4.3.1	Processing system revision	ontime	39647.9998523	Sum of GTIs [s]
caldbver	4.4.8	&#160	ontime1	39641.518001378	Sum of GTIs [s]
date	2012-03-22T23:30:10	Date and time of file creation	ontime2	39635.036040962	Sum of GTIs [s]
revision	2	Processing version of data	ontime3	39641.517891824	Sum of GTIs [s]
			ontime6	39647.9998523	Sum of GTIs [s]
			ontime7	39647.9998523	Sum of GTIs [s]
			ontime8	39647.9998523	Sum of GTIs [s]
			l1events	1783475	Number of level 1 events

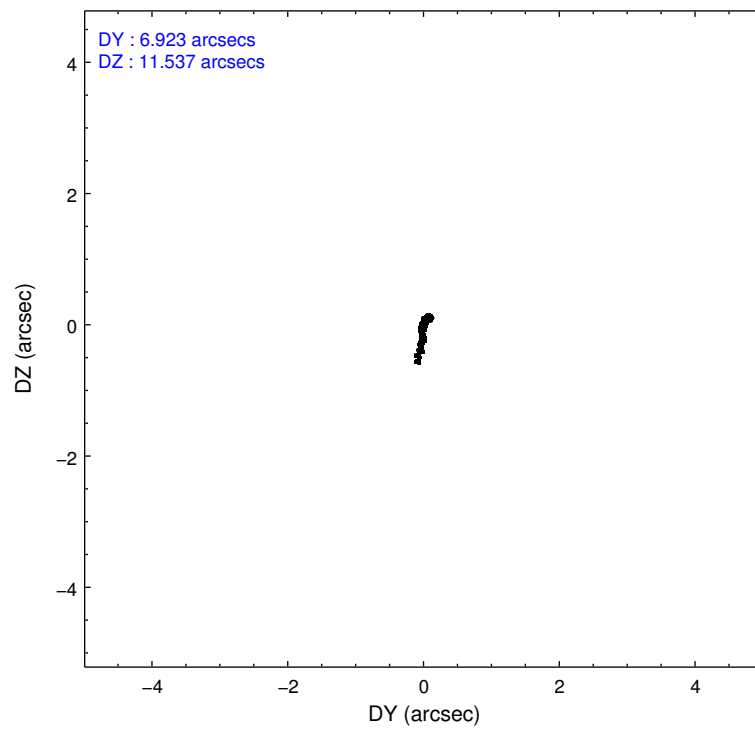
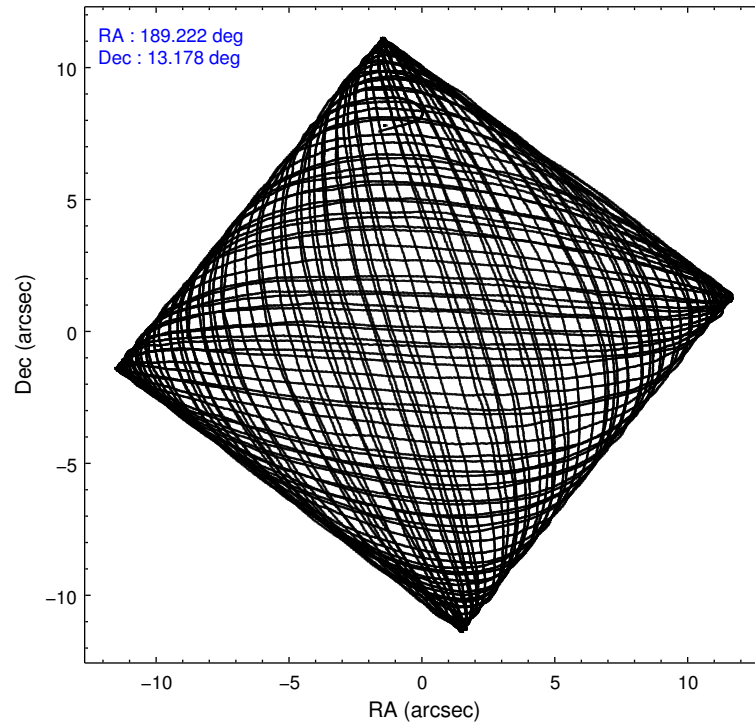
### 2.1.4 Events

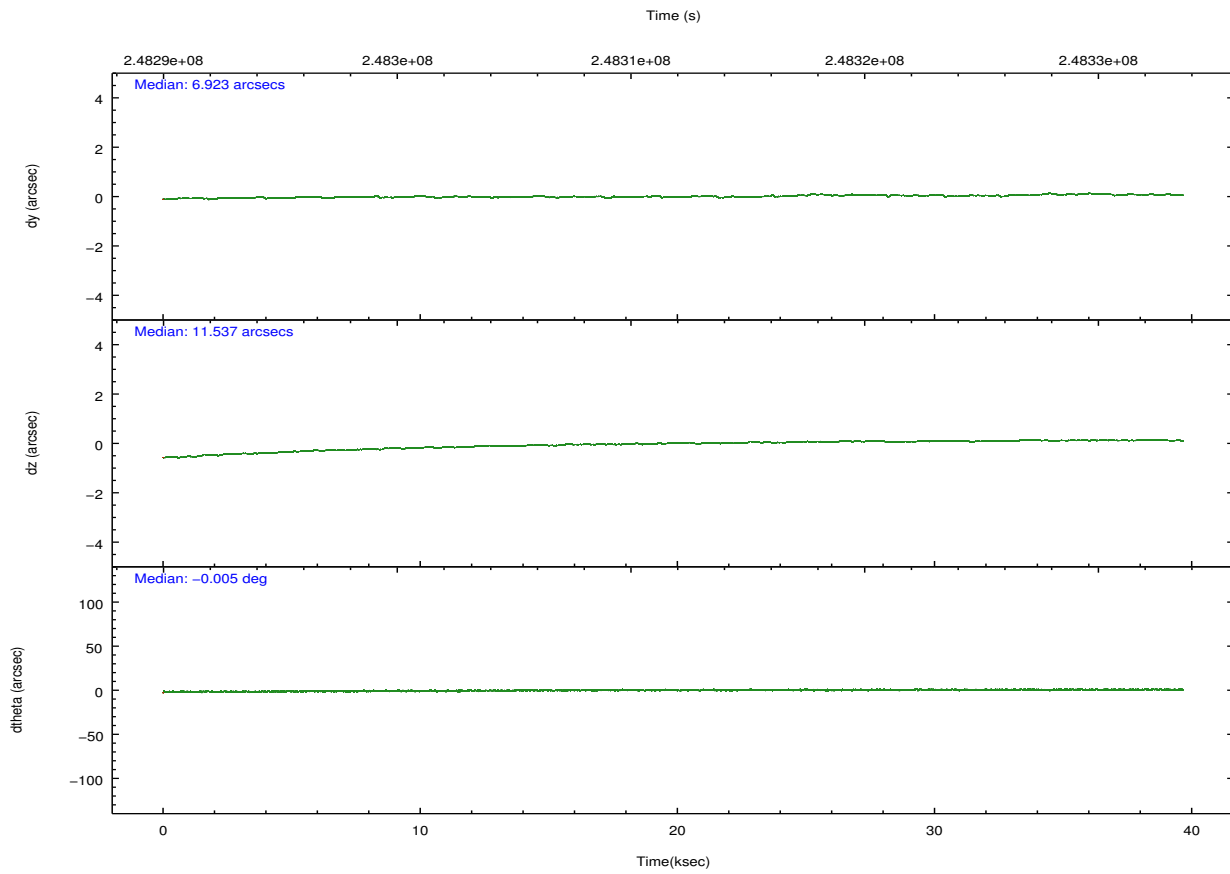
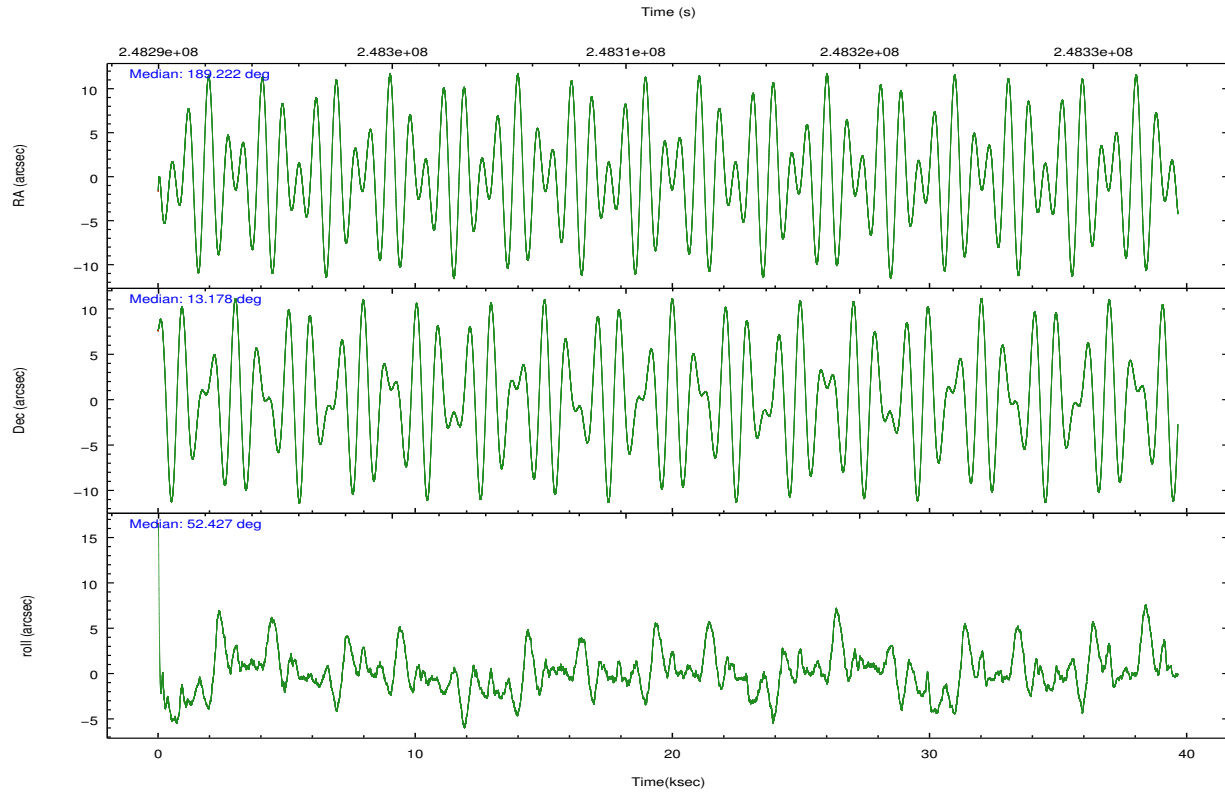
	ccd 1	ccd 2	ccd 3	ccd 6	ccd 7	ccd 8		ccd 1	ccd 2	ccd 3	ccd 6	ccd 7	ccd 8
level 1 events	269761	289085	271269	279937	325368	348055	grade 0 events	12505	10715	11253	12682	16816	27942
rejected events	237918	262009	243289	248884	172357	266009		4%	3%	4%	4%	5%	8%
rejected %	88%	90%	89%	88%	52%	76%	grade 1 events	127	141	164	111	251	277
								0%	0%	0%	0%	0%	0%
							grade 2 events	7201	6630	6040	6459	32107	18660
								2%	2%	2%	2%	9%	5%
							grade 3 events	3437	2943	3103	3243	14970	8703
								1%	1%	1%	1%	4%	2%
							grade 4 events	3401	2928	3103	3254	14797	7979
								1%	1%	1%	1%	4%	2%
							grade 5 events	10707	8694	10919	11241	33017	15913
								3%	3%	4%	4%	10%	4%
							grade 6 events	6363	4817	5386	6417	79255	21511
								2%	1%	1%	2%	24%	6%
							grade 7 events	226020	252217	231301	236530	134155	247070
								83%	87%	85%	84%	41%	70%

## 2.2 Compared Parameters

Parameter	Planned	Actual	Parameter	Planned	Actual
Instrument	ACIS	ACIS	Obspar format version number	7	7
Detector	ACIS-123678	ACIS-123678	Obspar file type	PREDICTED	ACTUAL
Grating	NONE	NONE	Obspar update status	NONE	UPDATED
Data mode	VFAINT	VFAINT	Number of optional ACIS chips dropped	0	0
Observation mode	POINTING	POINTING	On-chip summing requested	N	N
[deg] Pointing RA	189.218555	189.2218569540581	Subarray requested	NONE	NONE
[deg] Pointing Dec	13.151083	13.17812702868019	Alternating exposures requested	N	N
[deg] Pointing Roll	52.276531	52.43241462946145	[s] Primary exposure time	0.000000	3.2
[mm] SIM focus pos	-0.684267	-0.6828225247311905			
[mm] SIM defocus	0	0.001444936568705701			
[mm] SIM translation stage pos	-190.132523	-190.1400660498719			
[mm] SIM translation stage offset	0	0.00754346686406393			
[s] Observation start time (MET)	248292160.184000	248290385.62311			
Observation start date	2005-11-13T18:01:36	2005-11-13T17:33:05			
[s] Observation end time (MET)	248331629.184000	248331854.56252			
Observation end date	2005-11-14T04:59:25	2005-11-14T05:04:14			
Read mode	TIMED	TIMED			

## 2.3 Aspect



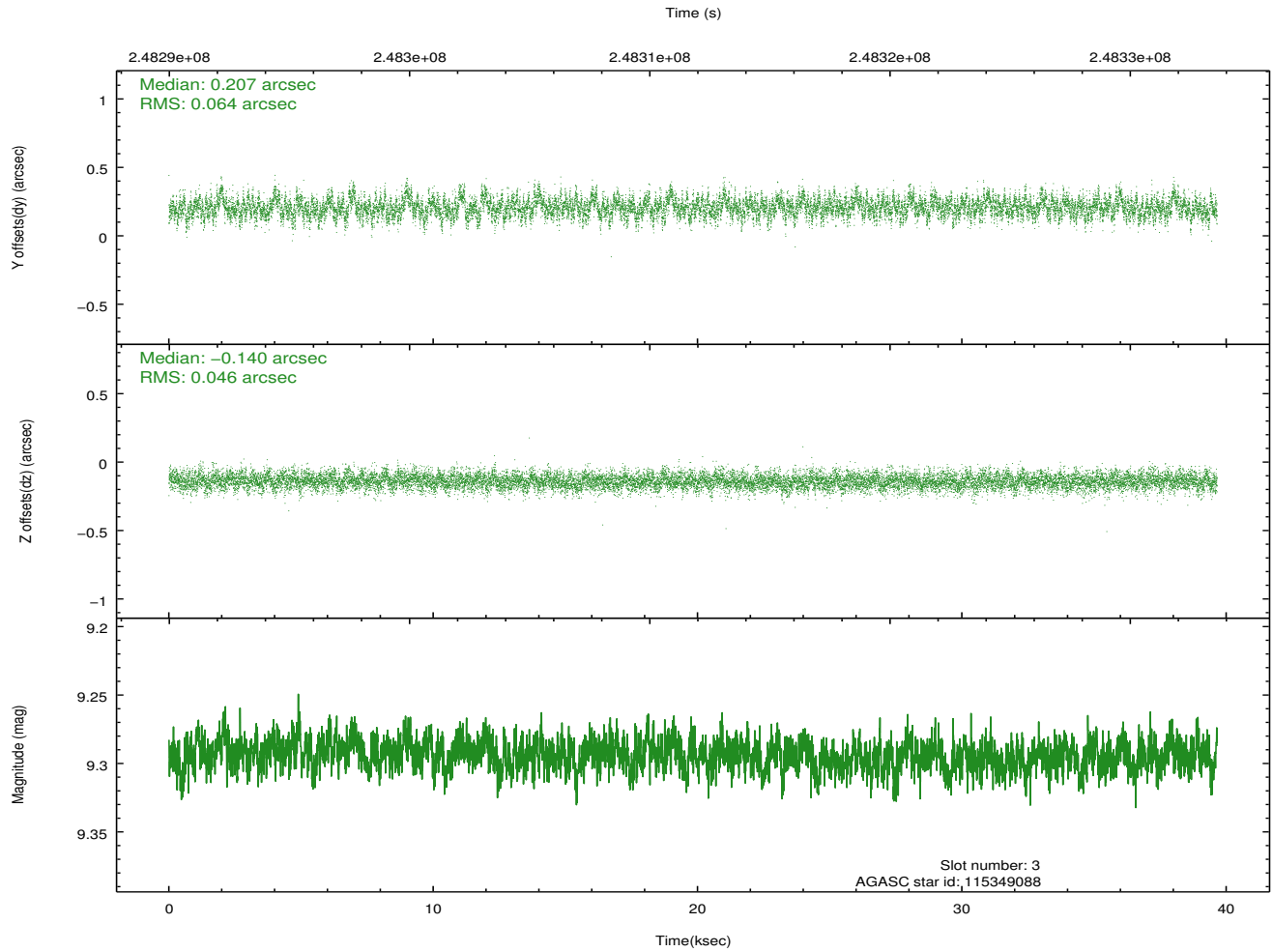
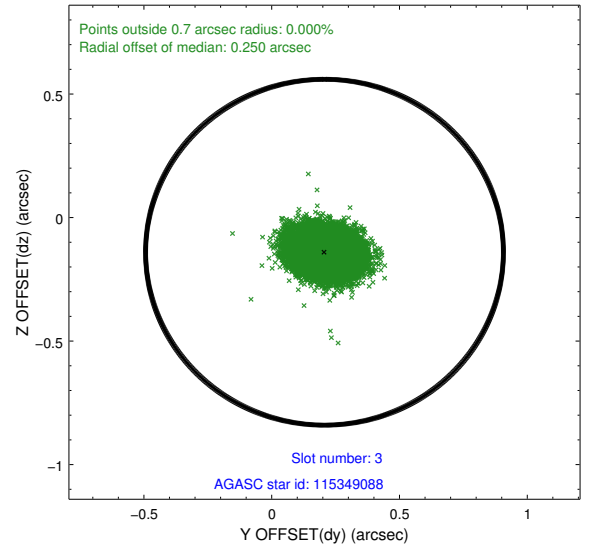
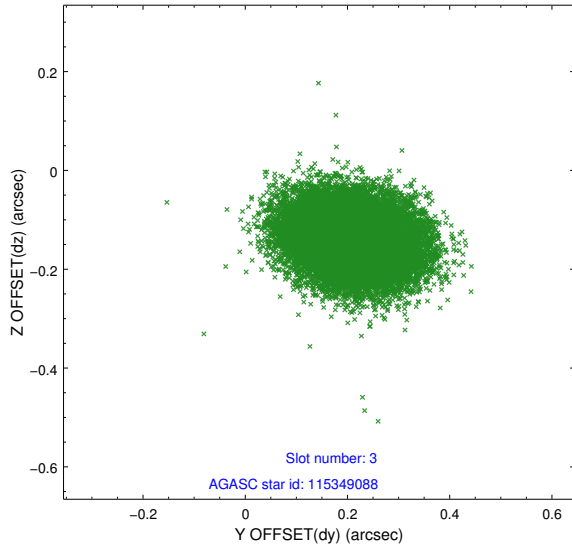


### Slot Statistics

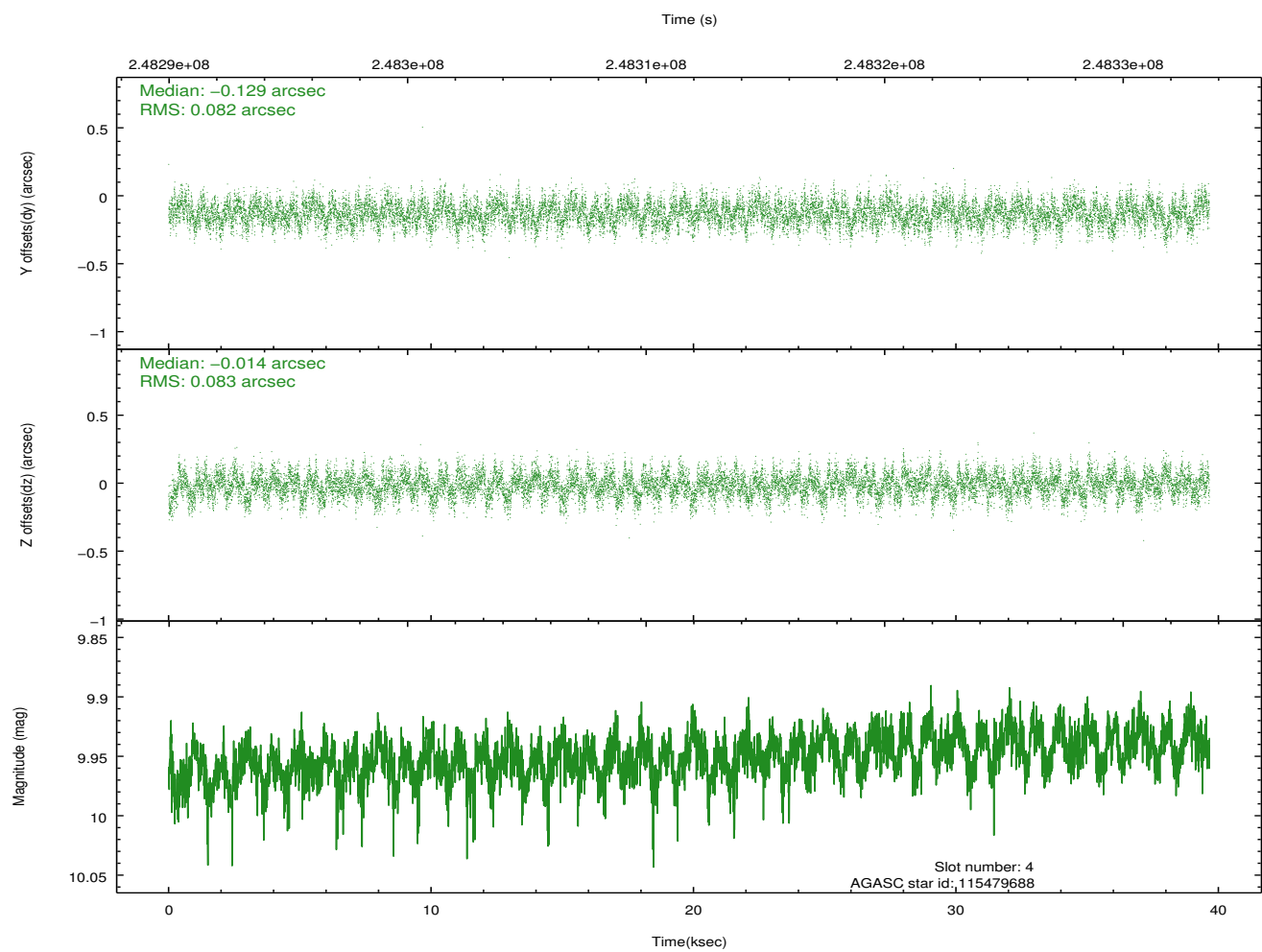
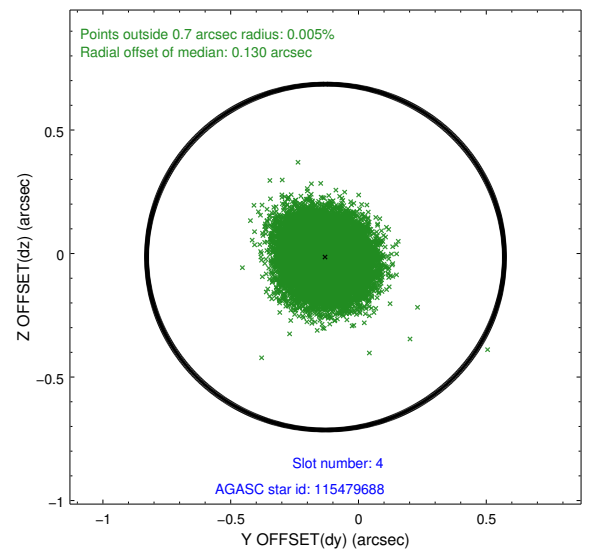
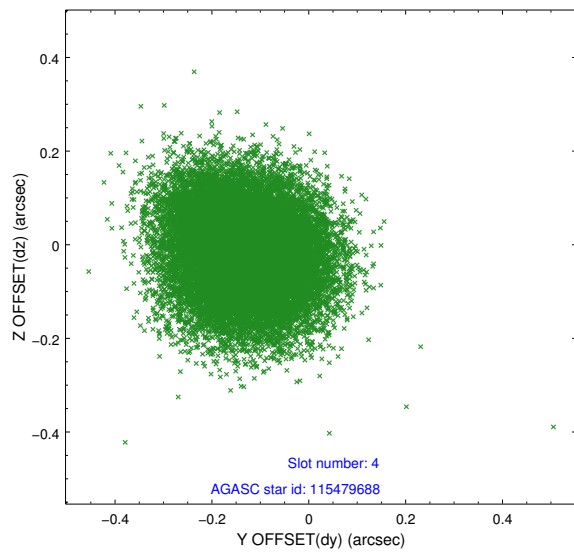
slot	status	id	mag	n_pts	med_dy	med_dz	dr1	dr2	ra	dec	mean_y	mean_z
0	FID	ACIS-S-1	7.18	9673	0.017	-0.088	0.009	0.017	0.000000	0.000000	936.35	-1728.48
1	FID	ACIS-S-4	7.20	9673	0.052	0.057	0.008	0.013	0.000000	0.000000	2153.81	175.79
2	FID	ACIS-S-5	7.23	9673	-0.095	0.044	0.007	0.012	0.000000	0.000000	-1812.60	169.42
3	GUIDE	115349088	9.29	19333	0.207	-0.140	0.083	0.138	188.777694	12.938966	-1549.02	757.30
4	GUIDE	115479688	9.95	19335	-0.129	-0.014	0.126	0.202	188.989208	13.490346	474.93	1382.77
5	GUIDE	115479944	9.54	19237	-0.191	0.026	0.128	0.204	189.780595	13.242655	1467.77	-1354.65
6	GUIDE	115481912	8.58	19335	0.035	0.142	0.072	0.113	189.408526	12.669552	-962.09	-1588.10
7	GUIDE	115482272	8.16	19338	0.080	-0.021	0.065	0.106	189.342268	12.983616	-210.83	-711.88

## 2.4 Star Slots

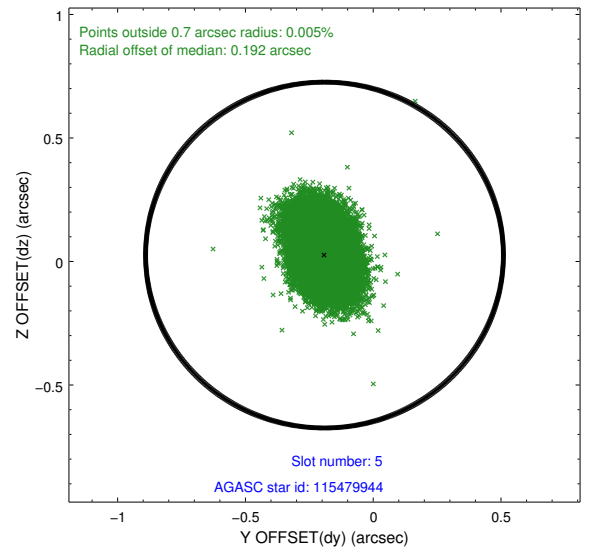
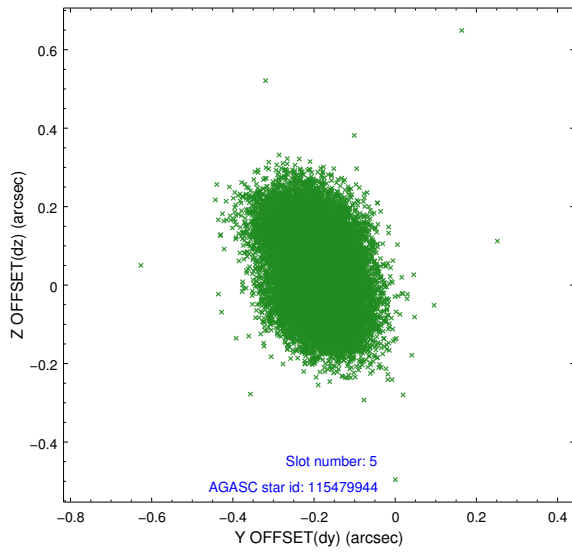
### 2.4.1 Slot 3



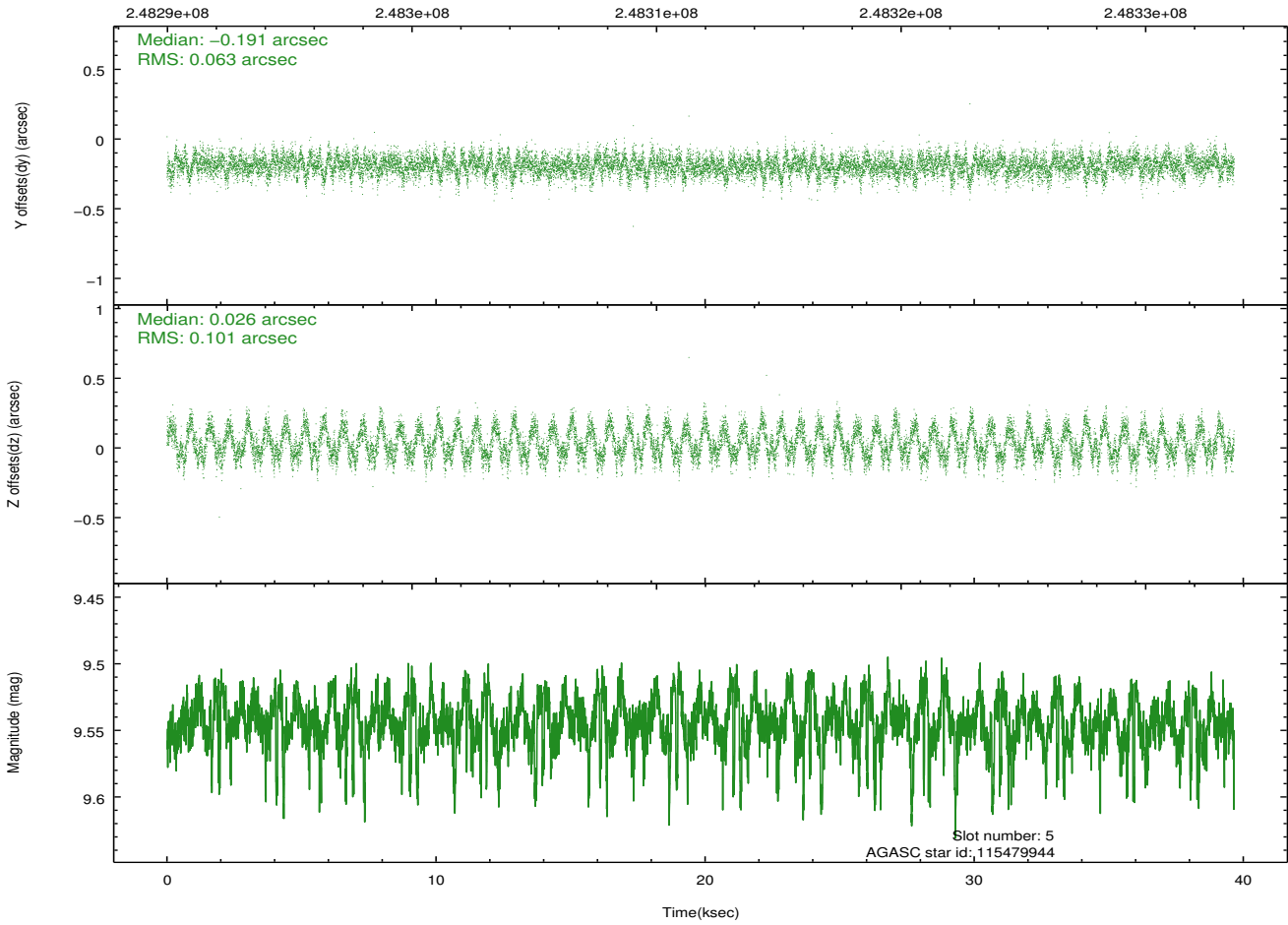
## 2.4.2 Slot 4



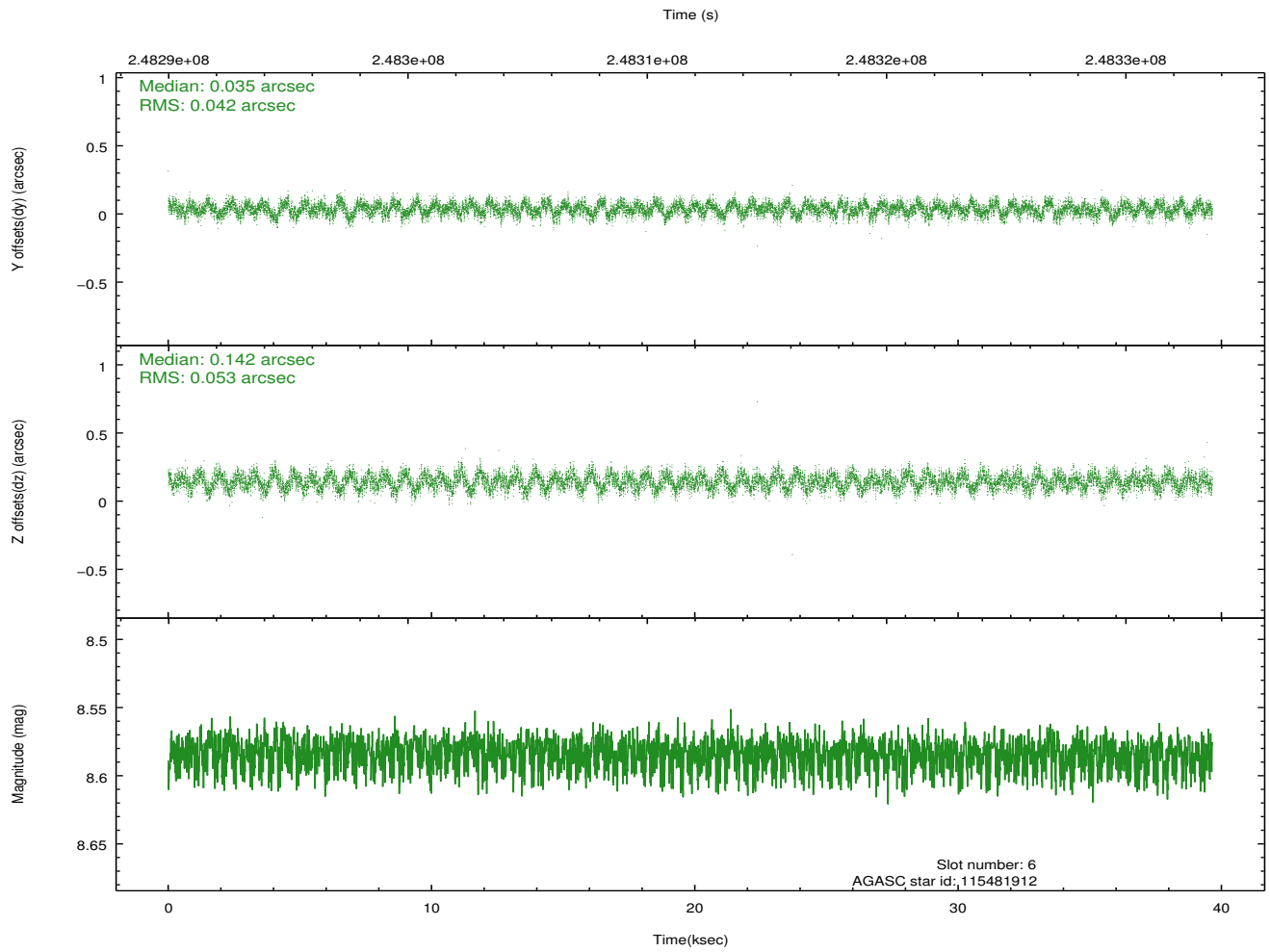
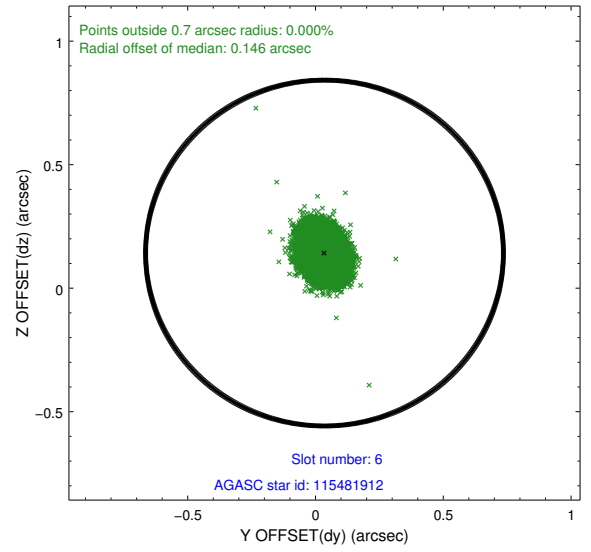
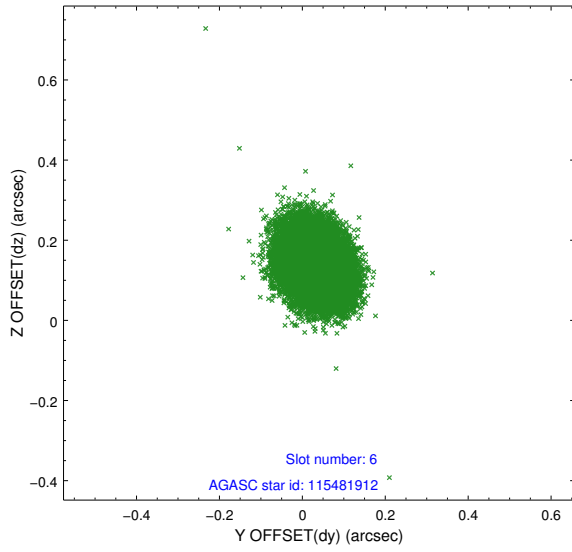
### 2.4.3 Slot 5



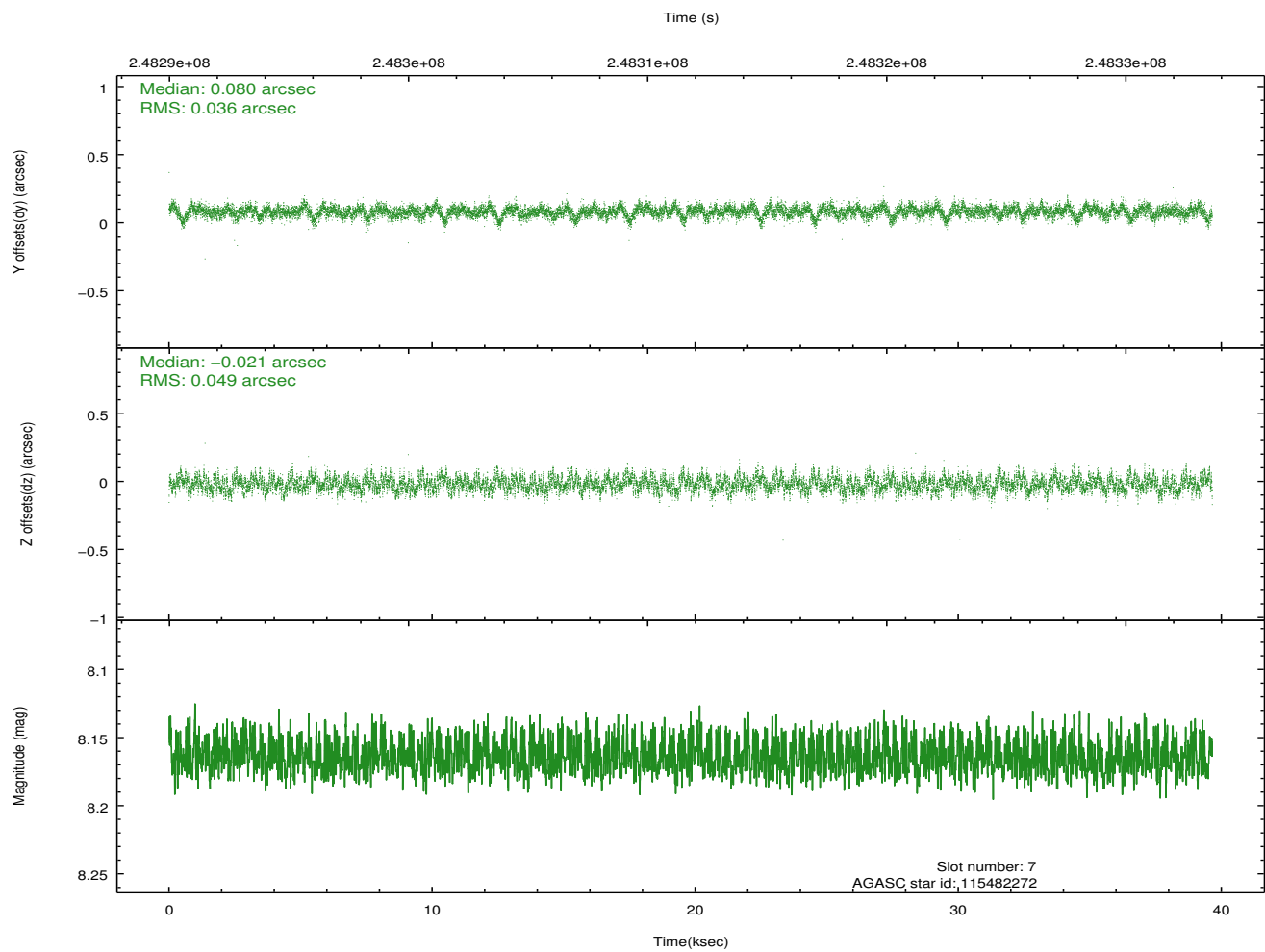
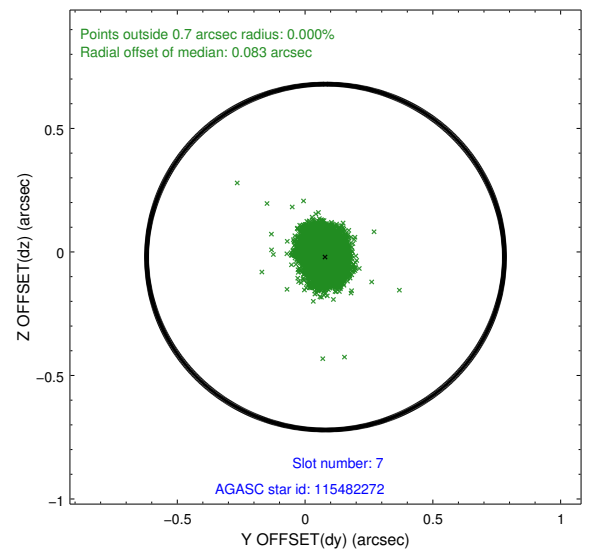
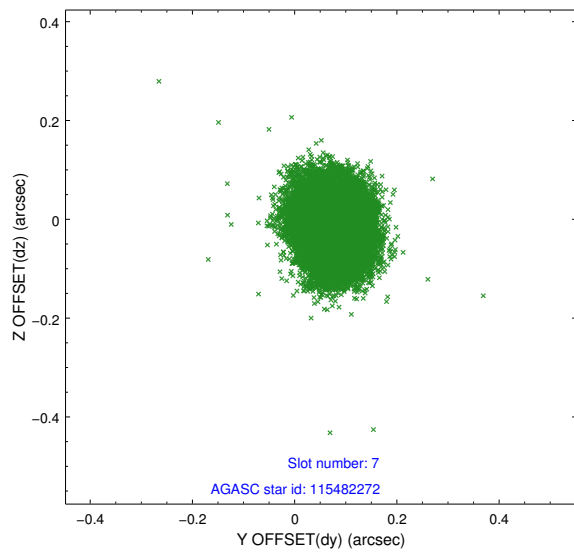
Time (s)



### 2.4.4 Slot 6

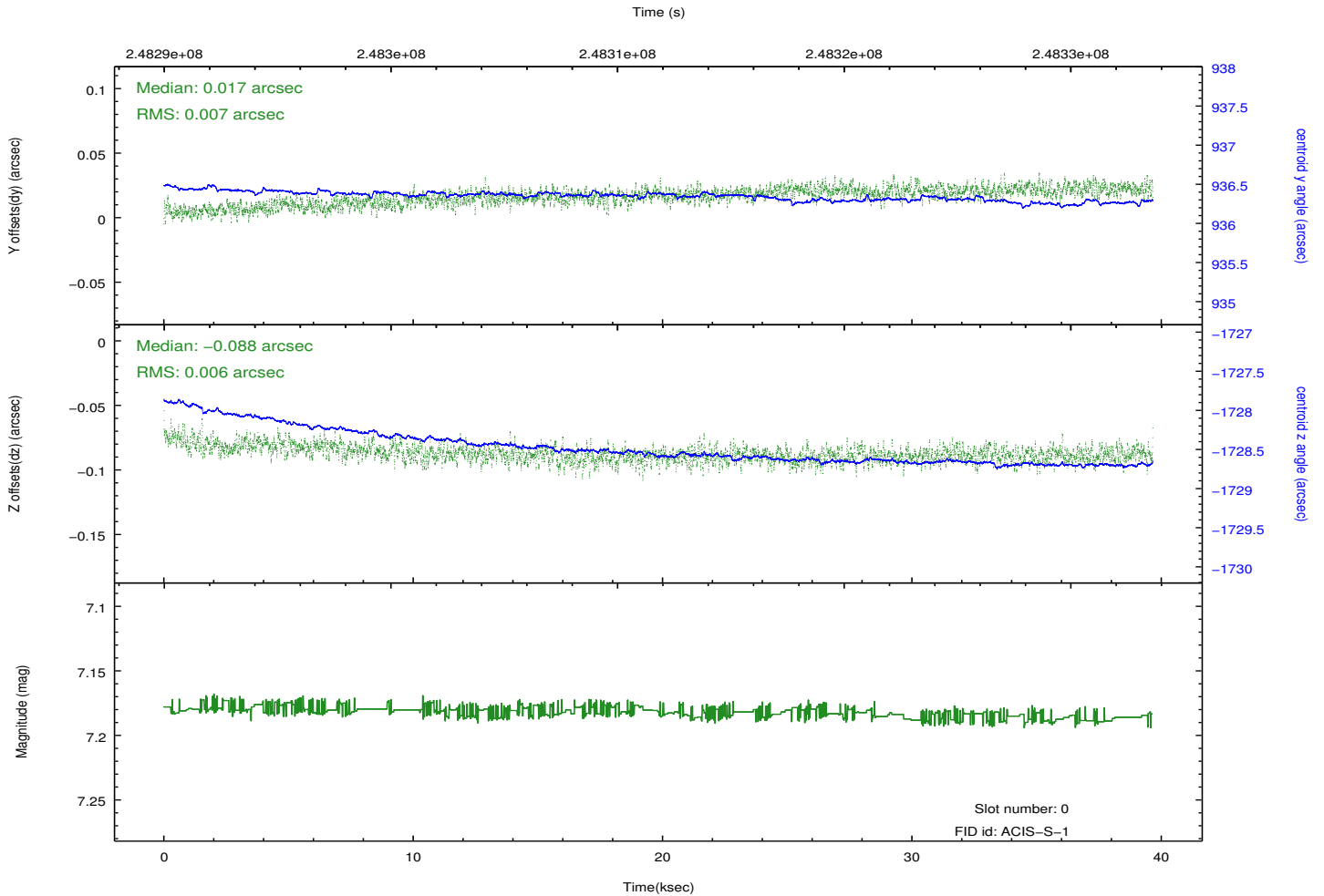
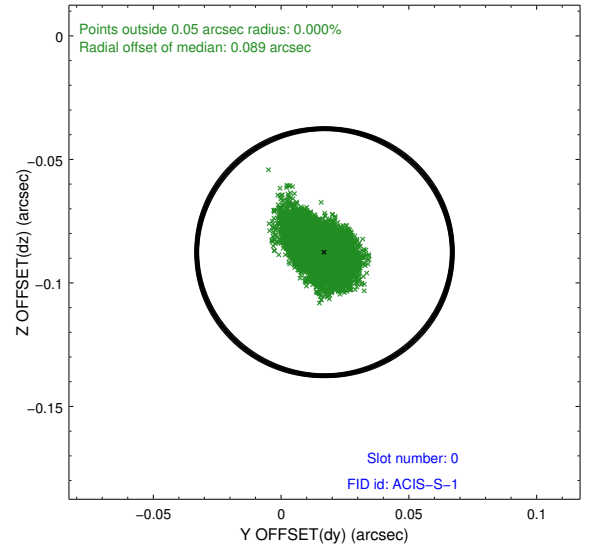
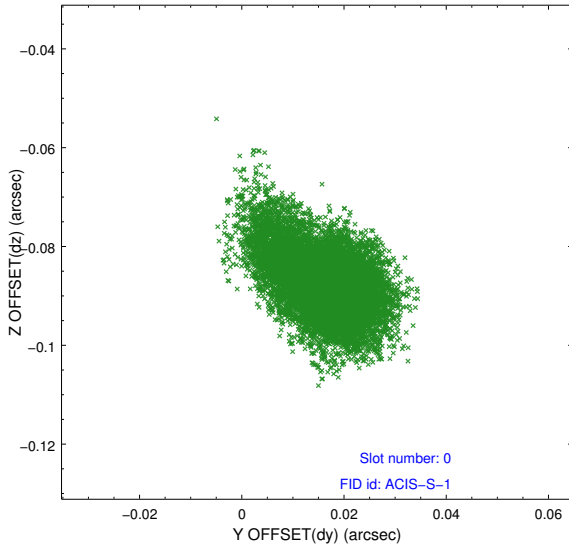


## 2.4.5 Slot 7

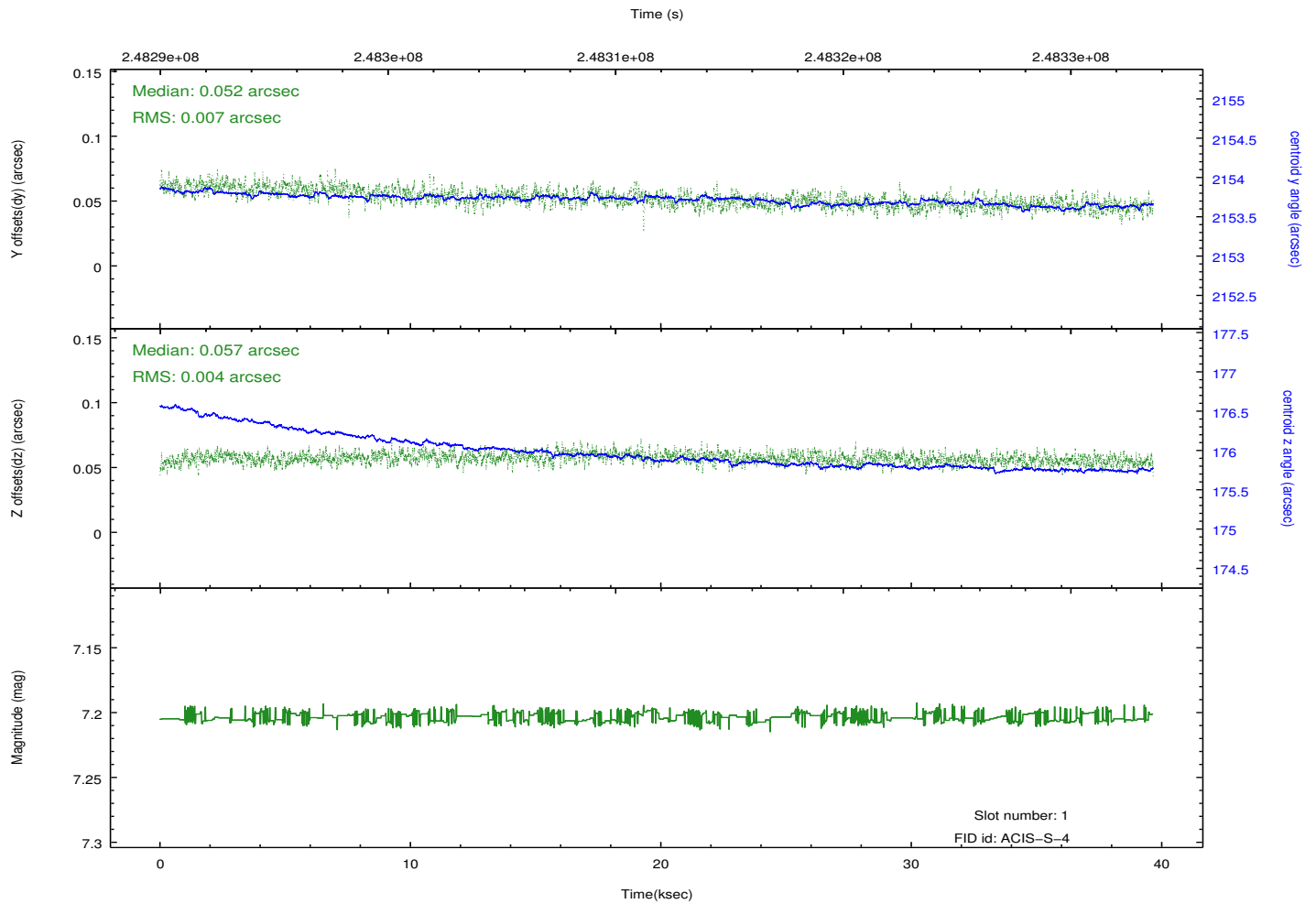
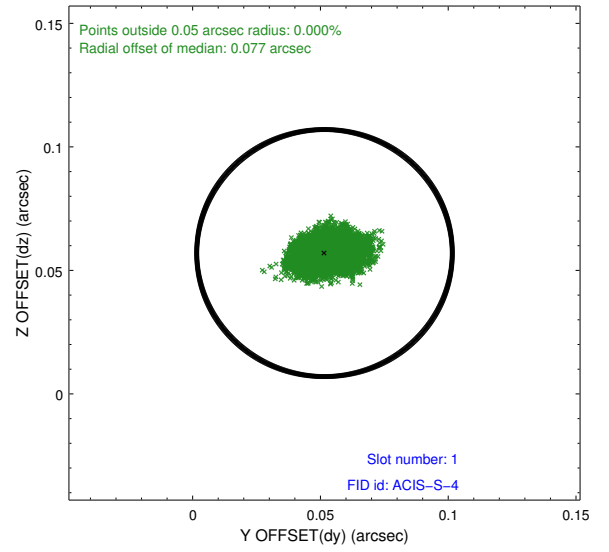
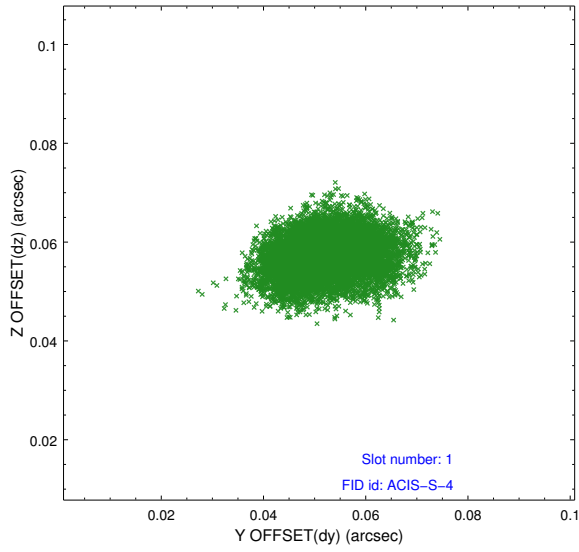


## 2.5 FID Slots

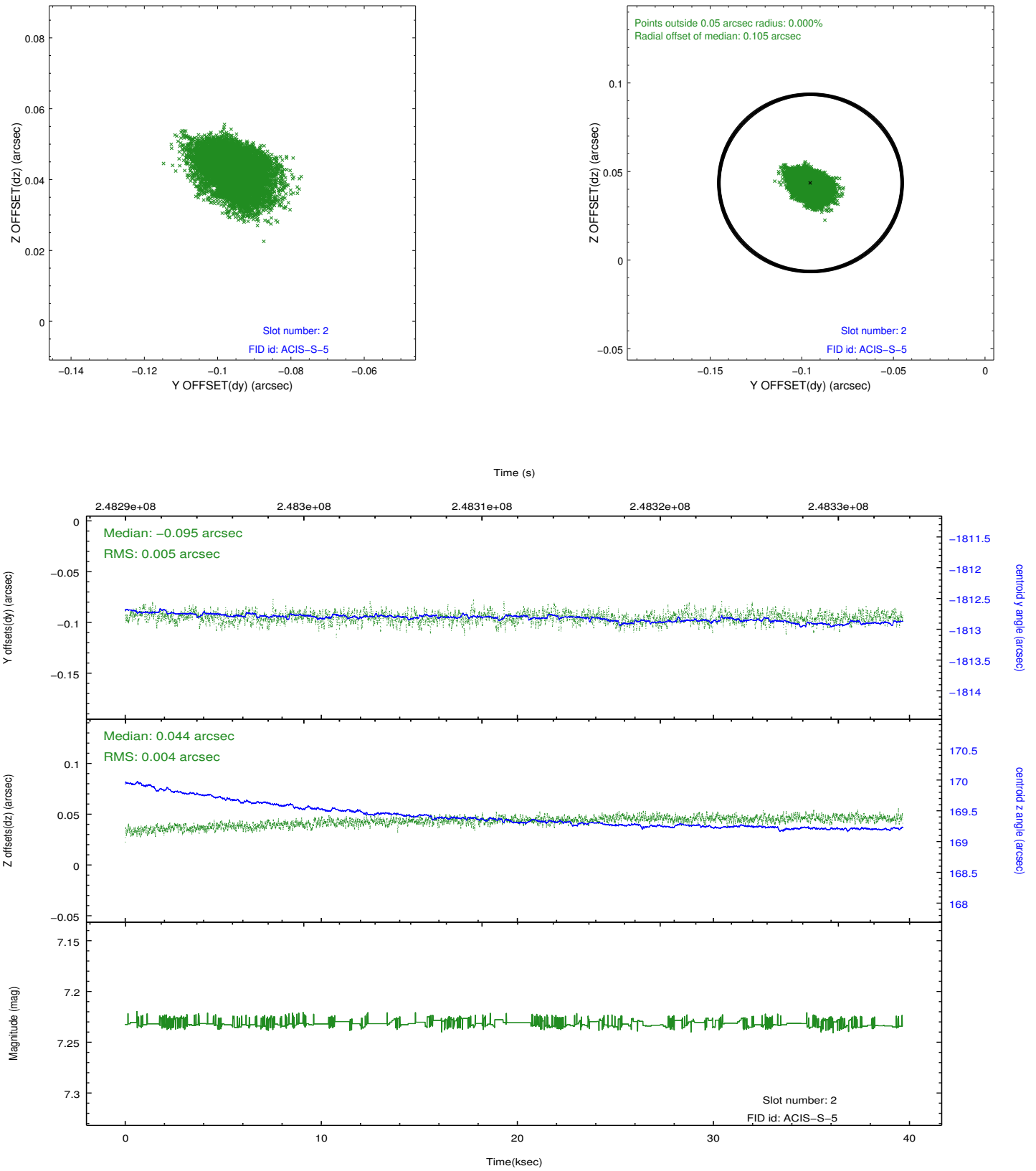
### 2.5.1 Slot 0



## 2.5.2 Slot 1



### 2.5.3 Slot 2



## A Summary

### A.1 Status

V&V Scientist	Jen Lauer
V&V Date (YYYY-MM-DD)	2012.03.23
V&V Edition	1
V&V Disposition and Status	OK
V&V Charge Time	39.64799

### A.2 Comments