

V&V Reference Report

L2 ASCDS Version : 8.5.1.1

Observation 5931 - L2 Version 3
Chandra X-Ray Center

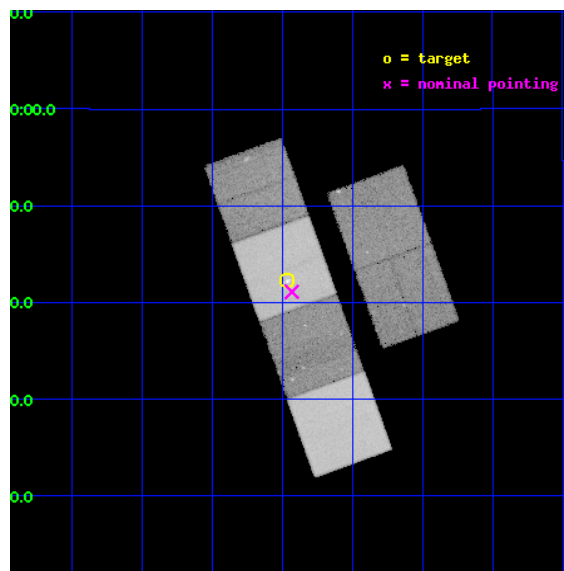
L2 Processing Date : Dec 25 2012

Contents

1	Front	2
2	OBI	3
2.1	OBI	3
2.1.1	Images	3
2.1.2	Bias	3
2.1.3	Parameters	4
2.1.4	Events	4
2.2	Compared Parameters	5
2.3	Aspect	6
2.4	Star Slots	9
2.4.1	Slot 3	9
2.4.2	Slot 4	10
2.4.3	Slot 5	11
2.4.4	Slot 6	12
2.4.5	Slot 7	13
2.5	FID Slots	14
2.5.1	Slot 0	14
2.5.2	Slot 1	15
2.5.3	Slot 2	16
A	Summary	17
A.1	Status	17
A.2	Comments	17

1 Front

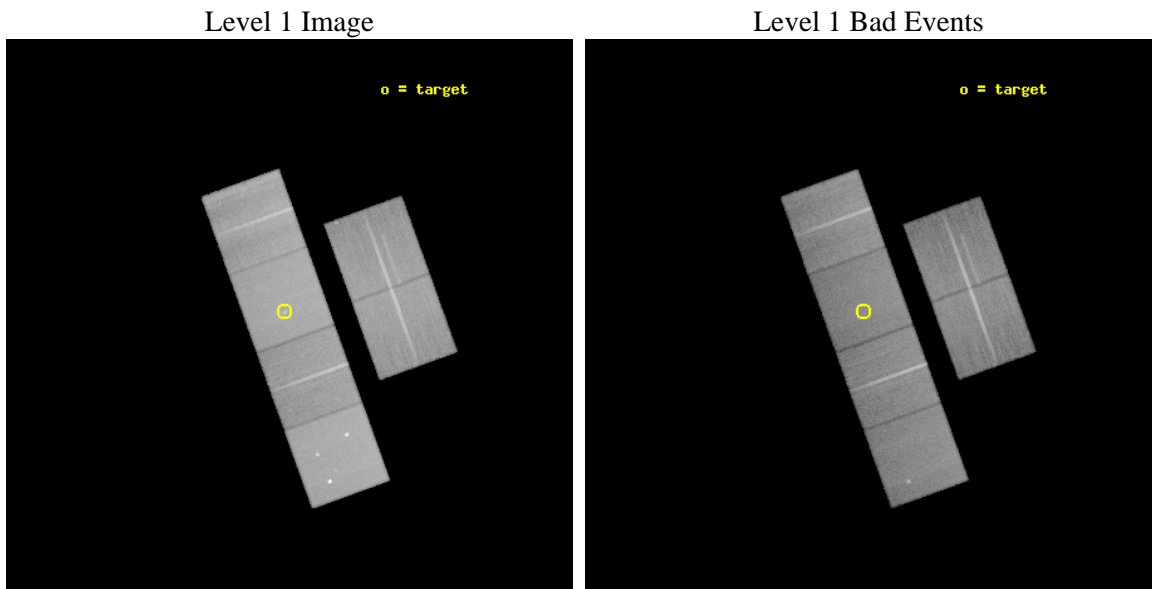
seq_num	600450	Sequence number
obs_id	5931	Observation id
title	X-rays and Galactic Structure	Proposal title
observer	Douglas Swartz	Principal investigator
object	NGC 3351	Source name
dtcycle	0	
cycle	P	events from which exps? Prim/Second/Both
ra_targ	160.991667	Observer's specified target RA [deg]
dec_targ	11.704167	Observer's specified target Dec [deg]
ra_nom	160.98282880076	Nominal RA [deg]
dec_nom	11.685290431004	Nominal Dec [deg]
roll_nom	250.14381504681	Nominal Roll [deg]
revision	3	Processing version of data
ontime	40060.436821163	Sum of GTIs [s]
livetime	39553.167448634	Livetime [s]
ontime2	40060.477851212	Sum of GTIs [s]
ontime3	40060.313691199	Sum of GTIs [s]
ontime5	40060.395801097	Sum of GTIs [s]
ontime6	40060.354731202	Sum of GTIs [s]
ontime7	40060.436821163	Sum of GTIs [s]
ontime8	40057.031690925	Sum of GTIs [s]
l2events	511298	Number of level 2 events



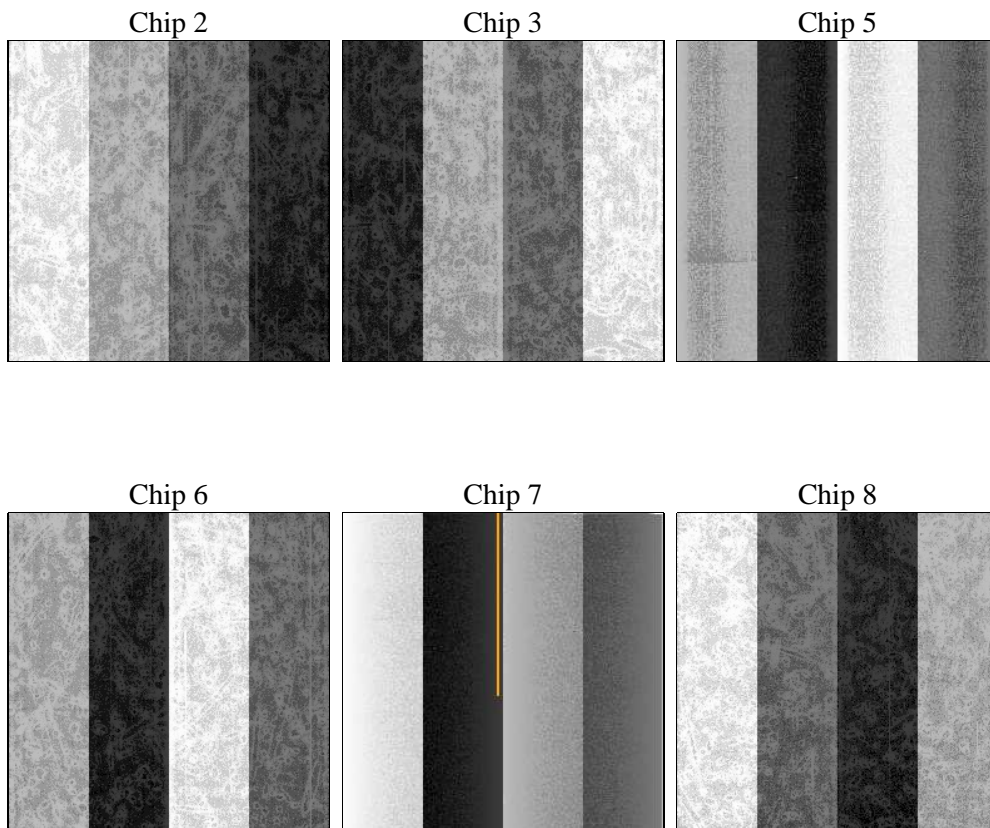
2 OBI

2.1 OBI

2.1.1 Images



2.1.2 Bias



2.1.3 Parameters

obi_num	0	Obi number	sched_exp_time	40000.000000	[s] Scheduled observation exposure time
ascdsver	8.5.1.1	Processing system revision	ontime	40060.436821163	Sum of GTIs [s]
caldbver	4.5.5	 	ontime2	40060.477851212	Sum of GTIs [s]
date	2012-12-25T23:14:17	Date and time of file creation	ontime3	40060.313691199	Sum of GTIs [s]
revision	3	Processing version of data	ontime5	40060.395801097	Sum of GTIs [s]
			ontime6	40060.354731202	Sum of GTIs [s]
			ontime7	40060.436821163	Sum of GTIs [s]
			ontime8	40057.031690925	Sum of GTIs [s]
			l1events	2256777	Number of level 1 events

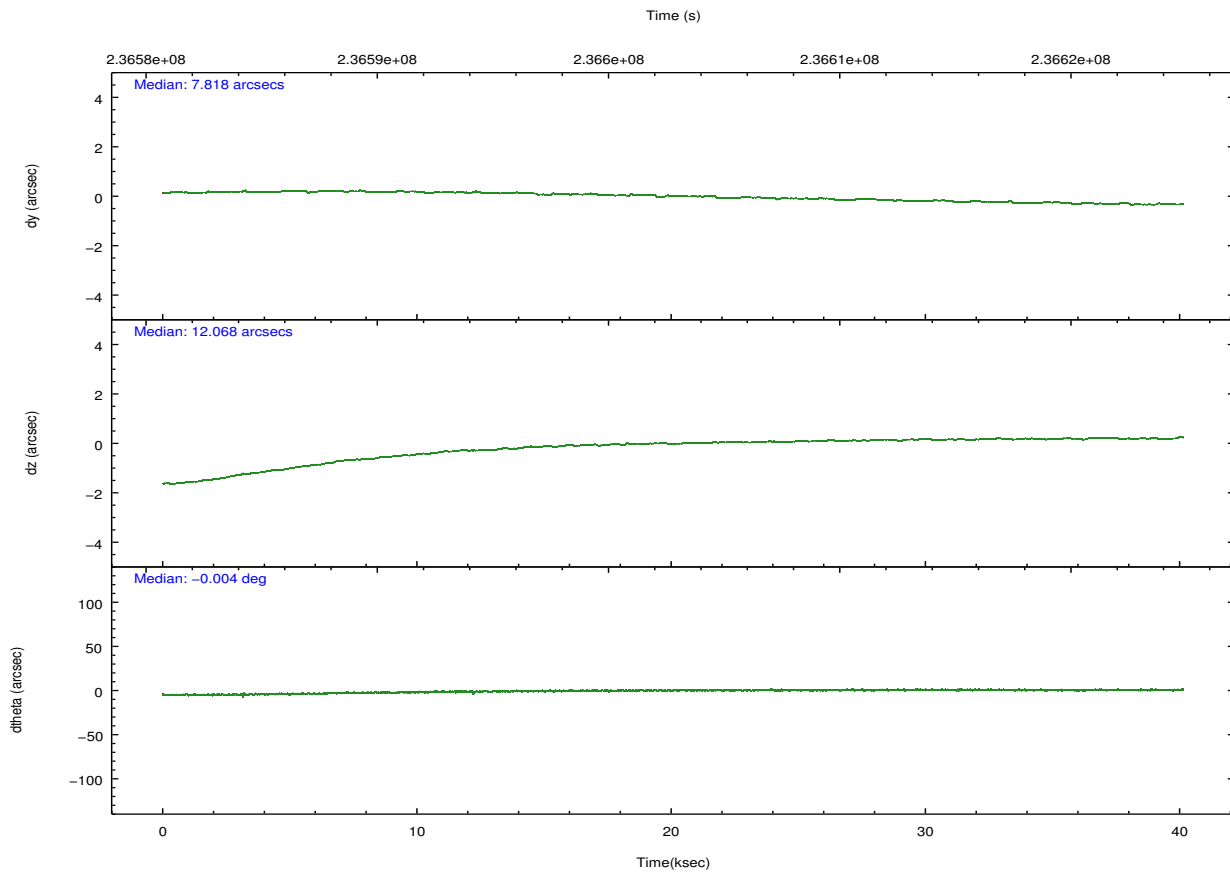
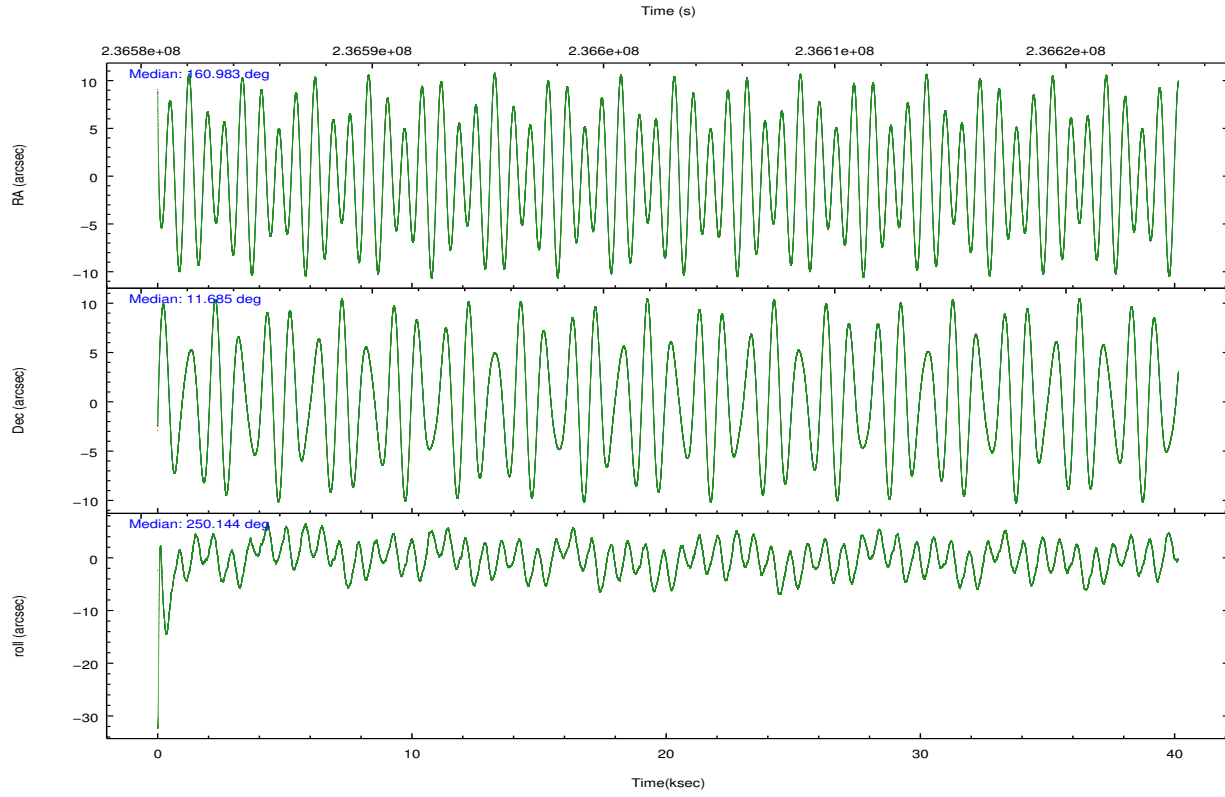
2.1.4 Events

	ccd 2	ccd 3	ccd 5	ccd 6	ccd 7	ccd 8		ccd 2	ccd 3	ccd 5	ccd 6	ccd 7	ccd 8
level 1 events	322996	301994	483884	319315	431343	397245	grade 0 events	16482	15959	24073	14643	16757	27440
rejected events	285735	265460	259618	281832	252219	311738		5%	5%	4%	4%	3%	6%
rejected %	88%	87%	53%	88%	58%	78%	grade 1 events	181	156	1904	168	397	282
								0%	0%	0%	0%	0%	0%
							grade 2 events	7739	7159	69829	8006	35800	18756
								2%	2%	14%	2%	8%	4%
							grade 3 events	3407	3527	8086	3687	15631	9090
								1%	1%	1%	1%	3%	2%
							grade 4 events	3554	3505	7769	3561	15538	8493
								1%	1%	1%	1%	3%	2%
							grade 5 events	12715	14300	34556	14538	41161	19452
								3%	4%	7%	4%	9%	4%
							grade 6 events	6082	6399	114529	7587	95417	21737
								1%	2%	23%	2%	22%	5%
							grade 7 events	272836	250989	223138	267125	210642	291995
								84%	83%	46%	83%	48%	73%

2.2 Compared Parameters

Parameter	Planned	Actual	Parameter	Planned	Actual
Instrument	ACIS	ACIS	Obspar format version number	7	7
Detector	ACIS-235678	ACIS-235678	Obspar file type	PREDICTED	ACTUAL
Grating	NONE	NONE	Obspar update status	NONE	UPDATED
Data mode	FAINT	FAINT	Number of optional ACIS chips dropped	0	0
Observation mode	POINTING	POINTING	On-chip summing requested	N	N
[deg] Pointing RA	160.977561	160.9828288007626	Subarray requested	NONE	NONE
[deg] Pointing Dec	11.712035	11.68529043100449	Alternating exposures requested	N	N
[deg] Pointing Roll	249.988265	250.1438150468093	[s] Primary exposure time	0.000000	3.2
[mm] SIM focus pos	-0.684267	-0.6828225247311905			
[mm] SIM defocus	0	0.001444936568705701			
[mm] SIM translation stage pos	-190.132523	-190.1425803651734			
[mm] SIM translation stage offset	0	0.01005778216563158			
[s] Observation start time (MET)	236582873.184000	236581857.74781			
Observation start date	2005-07-01T05:26:49	2005-07-01T05:10:57			
[s] Observation end time (MET)	236622873.184000	236623718.74973			
Observation end date	2005-07-01T16:33:29	2005-07-01T16:48:38			
Read mode	TIMED	TIMED			

2.3 Aspect

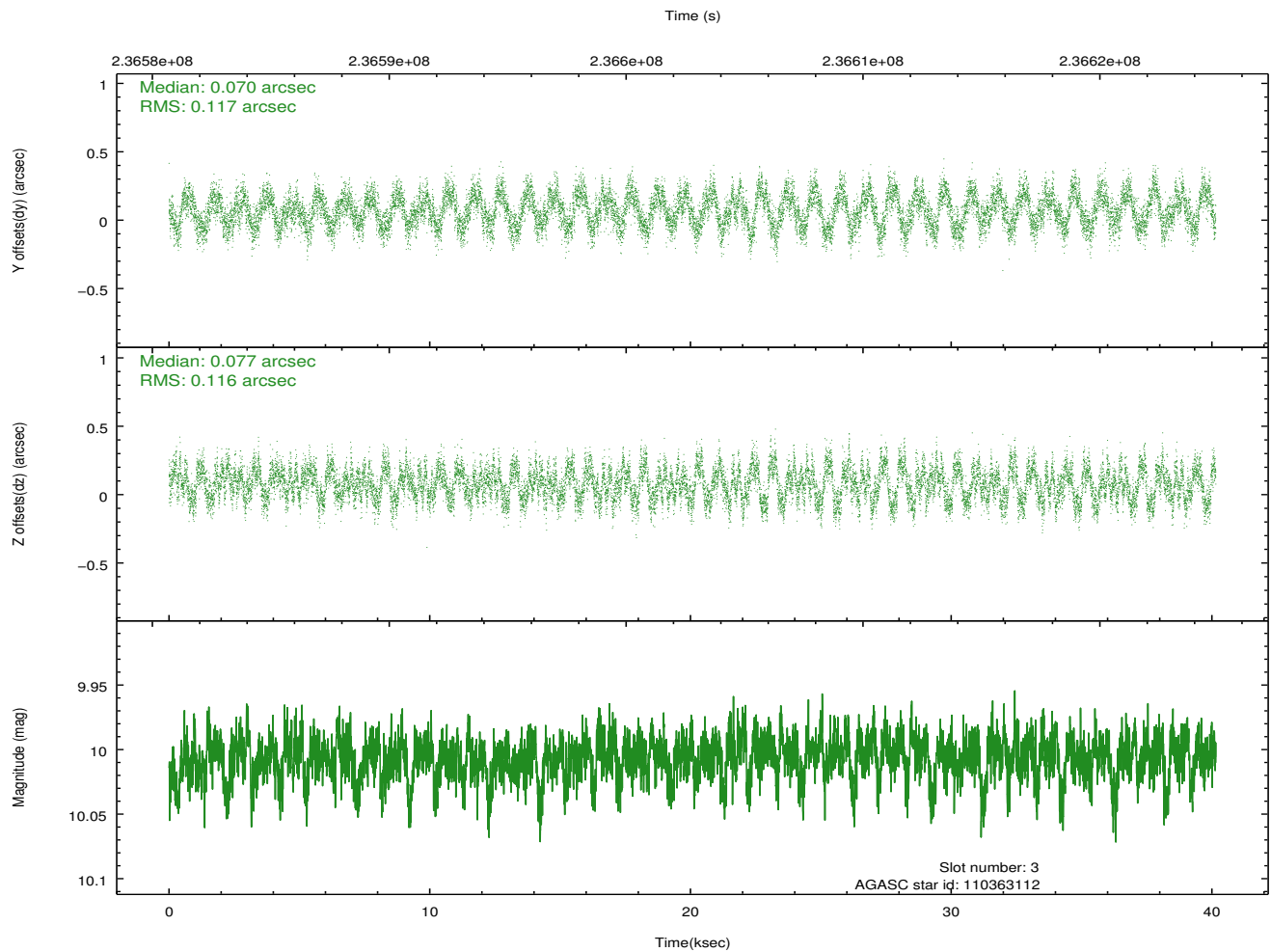
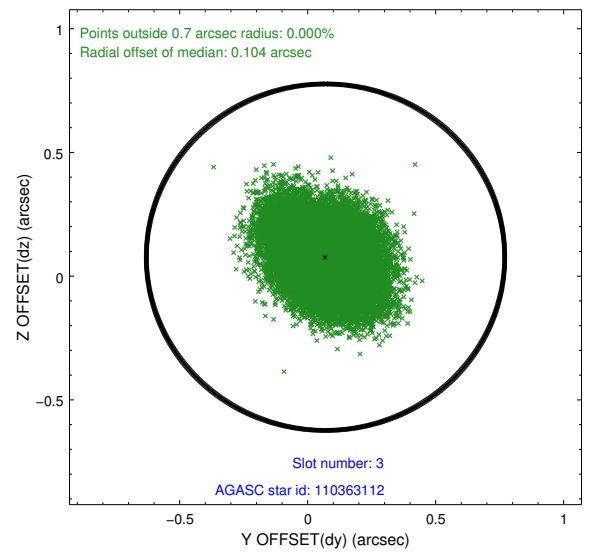
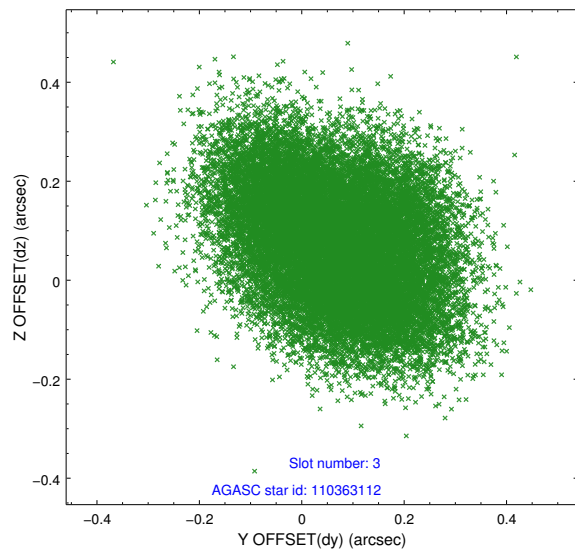


Slot Statistics

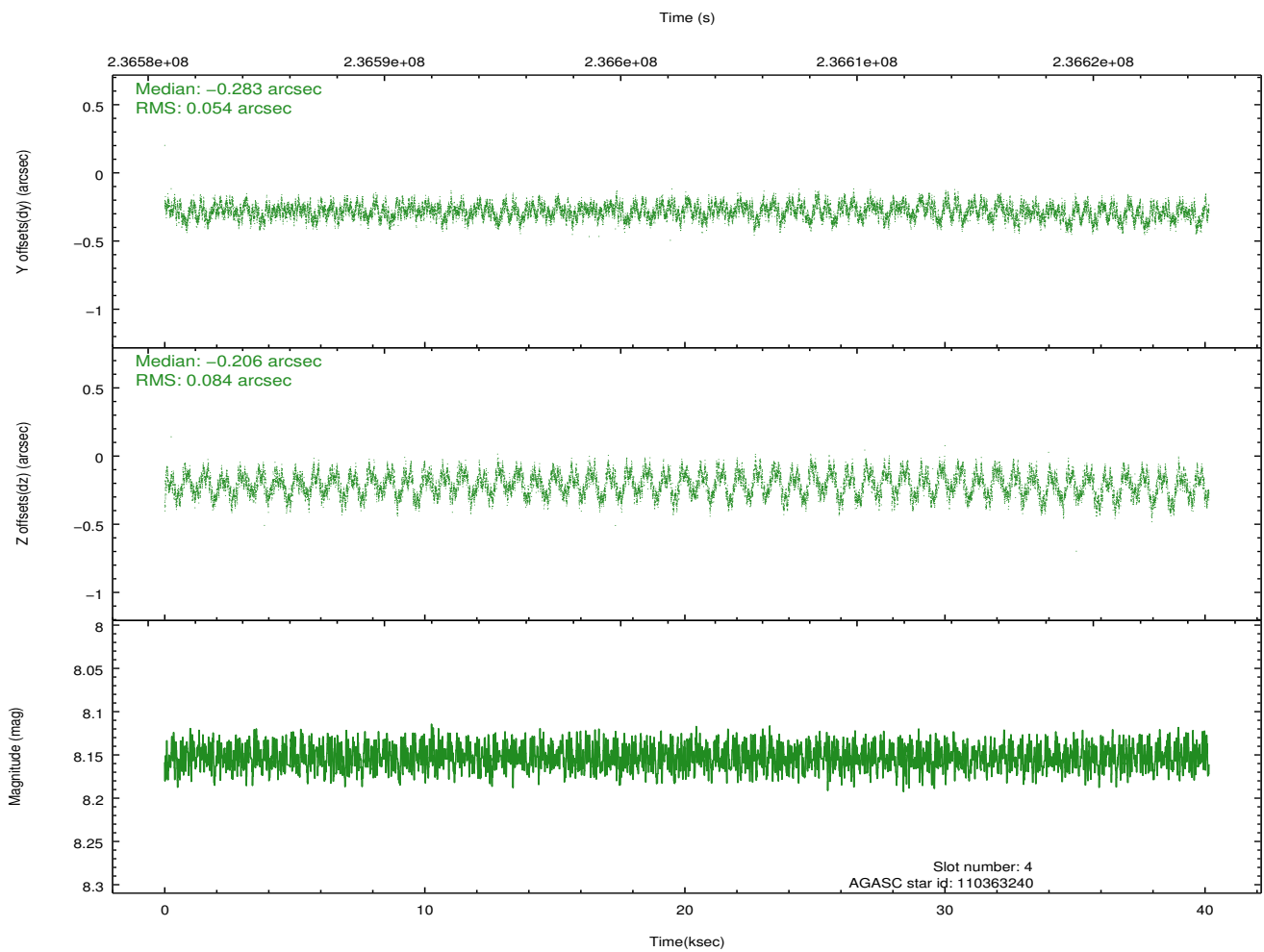
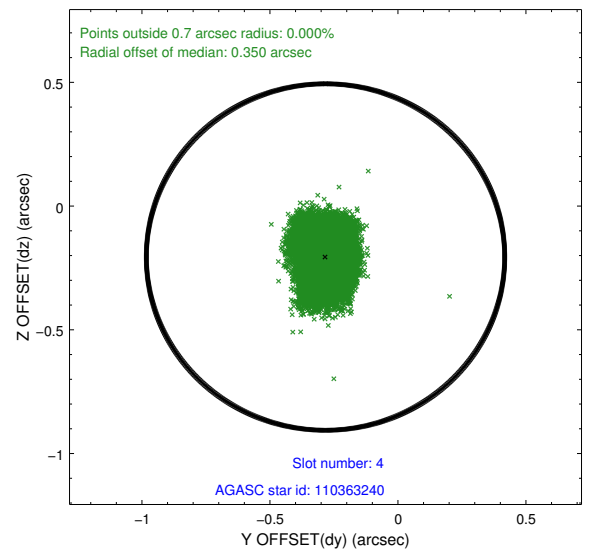
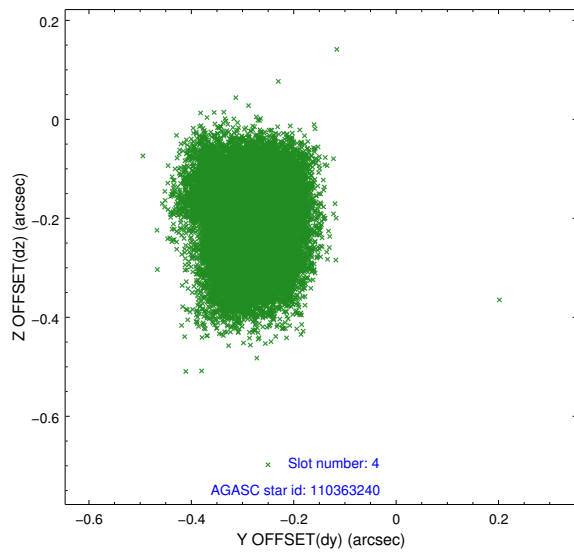
slot	status	id	mag	n_pts	med_dy	med_dz	dr1	dr2	ra	dec	mean_y	mean_z
0	FID	ACIS-S-2	7.10	9792	-0.016	-0.020	0.015	0.025	0.000000	0.000000	-760.58	-1733.11
1	FID	ACIS-S-4	7.20	9793	0.082	0.013	0.017	0.030	0.000000	0.000000	2152.78	175.41
2	FID	ACIS-S-5	7.23	9793	-0.097	0.017	0.014	0.021	0.000000	0.000000	-1813.49	169.08
3	GUIDE	110363112	10.01	19566	0.070	0.077	0.179	0.274	160.492613	11.398369	1645.93	-1221.90
4	GUIDE	110363240	8.15	19583	-0.283	-0.206	0.109	0.166	160.564767	12.418075	-1892.30	-2234.06
5	GUIDE	111280632	9.87	19565	0.076	0.037	0.121	0.196	161.089942	11.335611	1137.95	836.61
6	GUIDE	111281680	10.23	19459	0.161	0.089	0.164	0.277	161.020105	11.200959	1678.19	771.08
7	GUIDE	111285392	10.15	19541	-0.021	0.018	0.164	0.260	161.241595	11.515570	345.98	1117.35

2.4 Star Slots

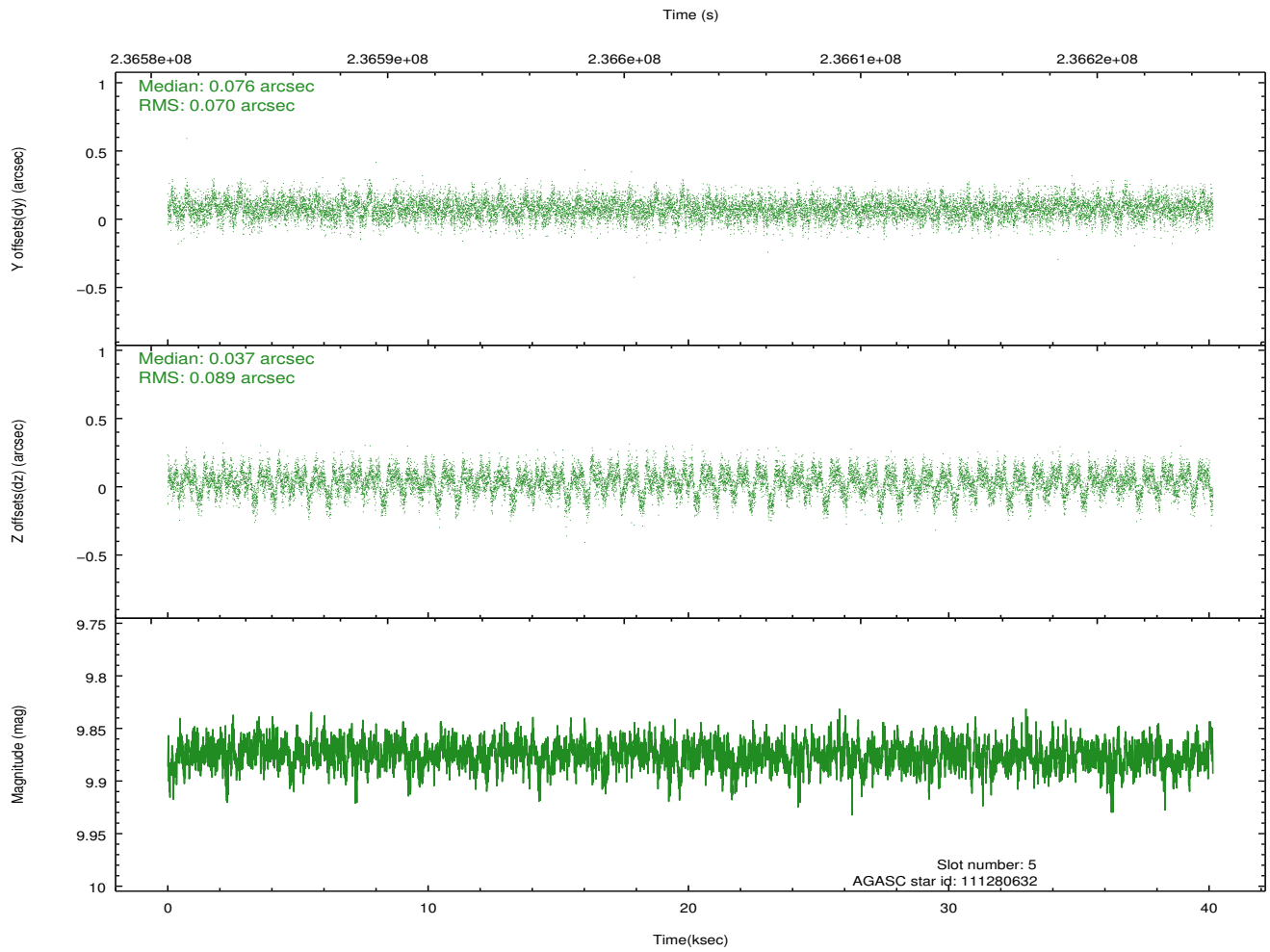
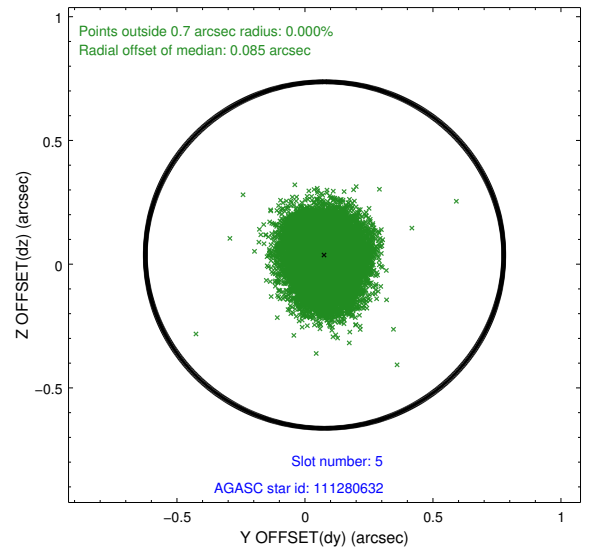
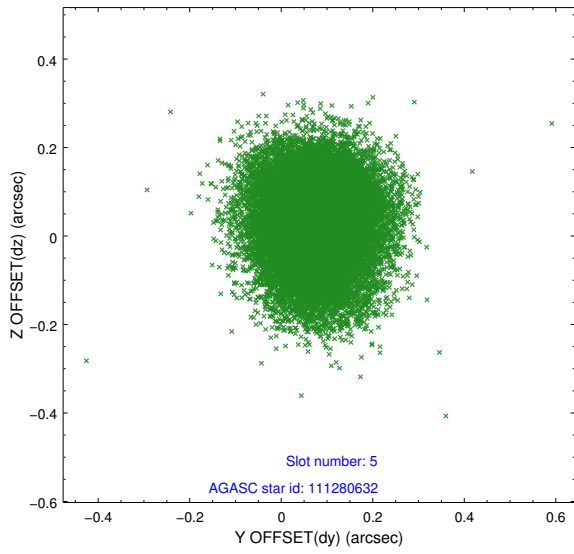
2.4.1 Slot 3



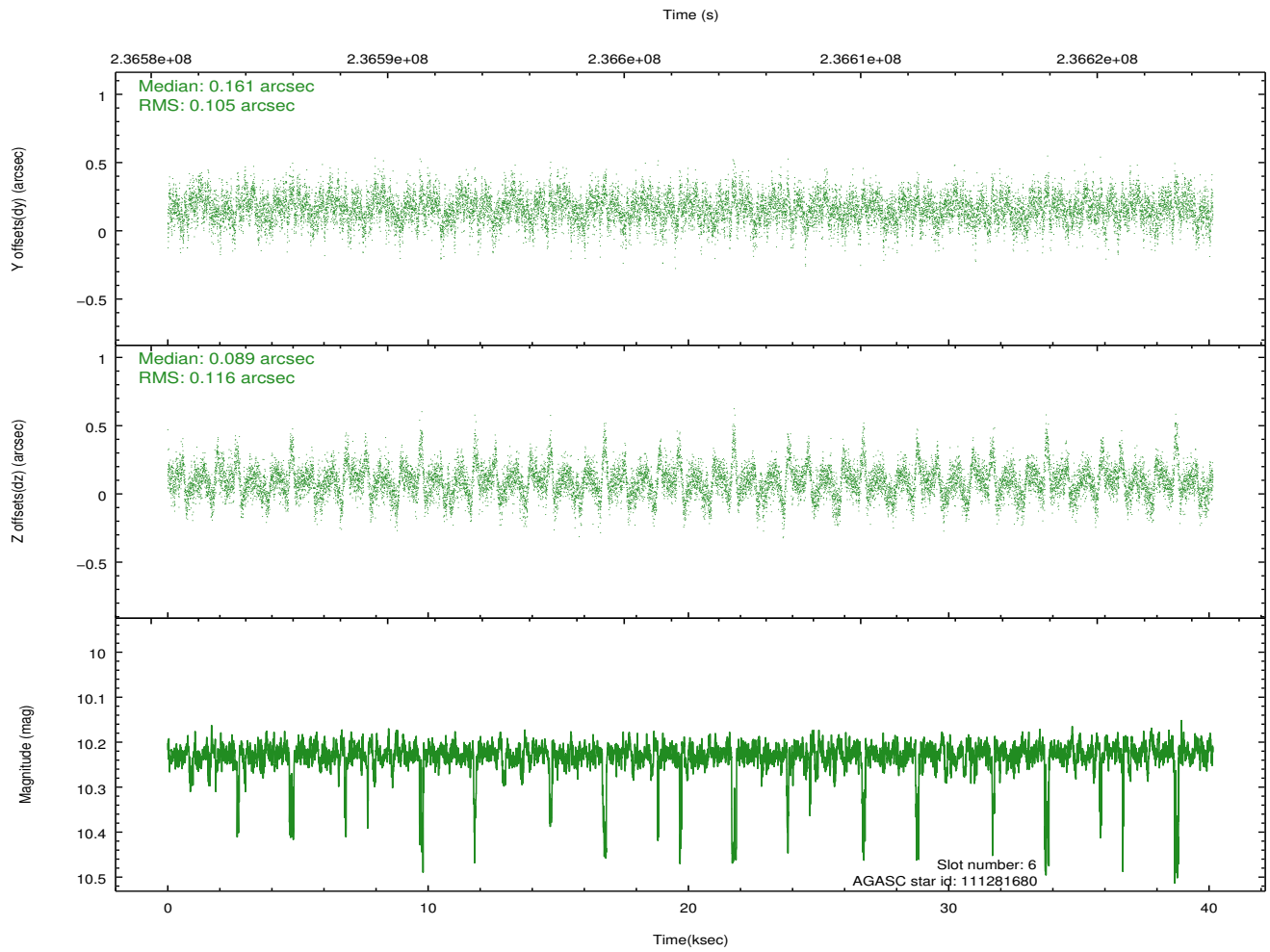
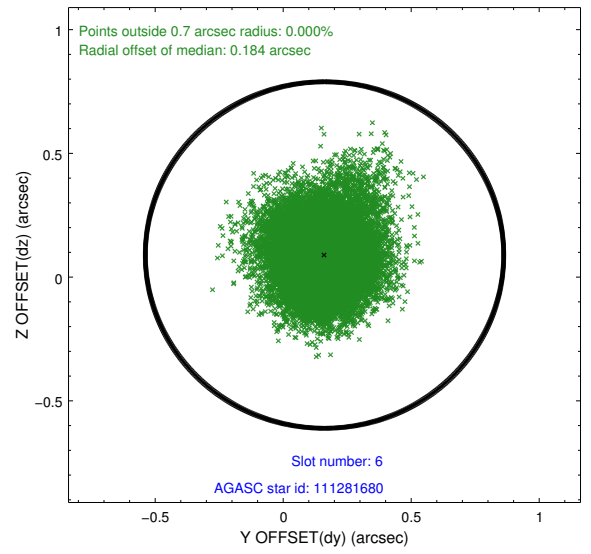
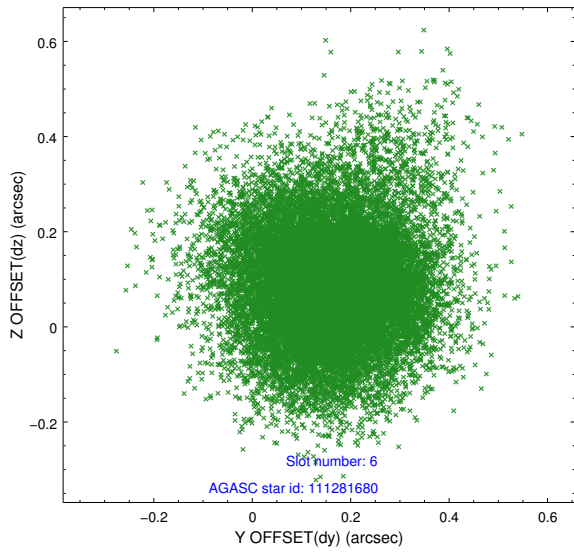
2.4.2 Slot 4



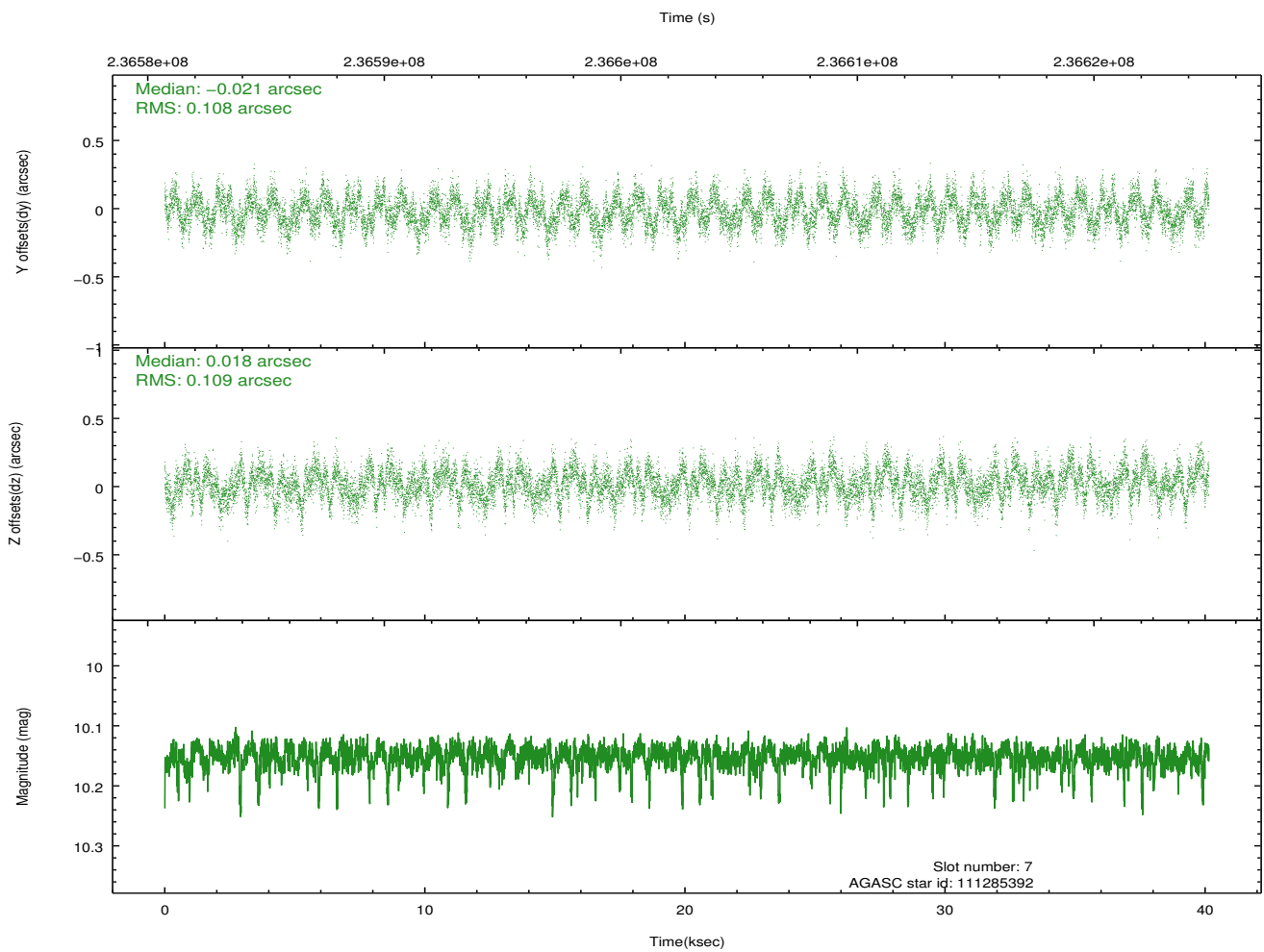
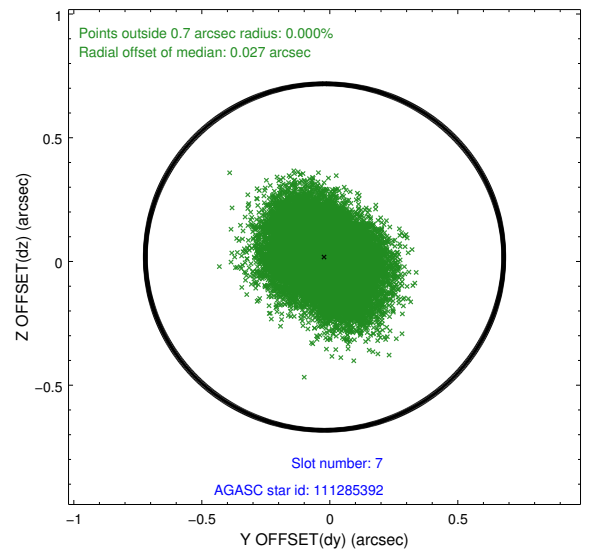
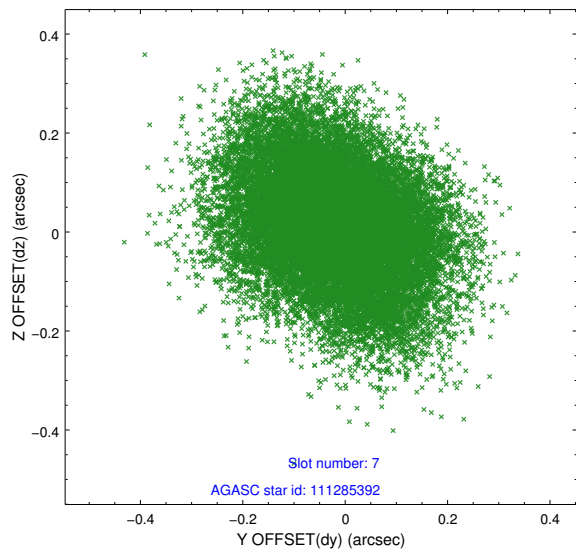
2.4.3 Slot 5



2.4.4 Slot 6

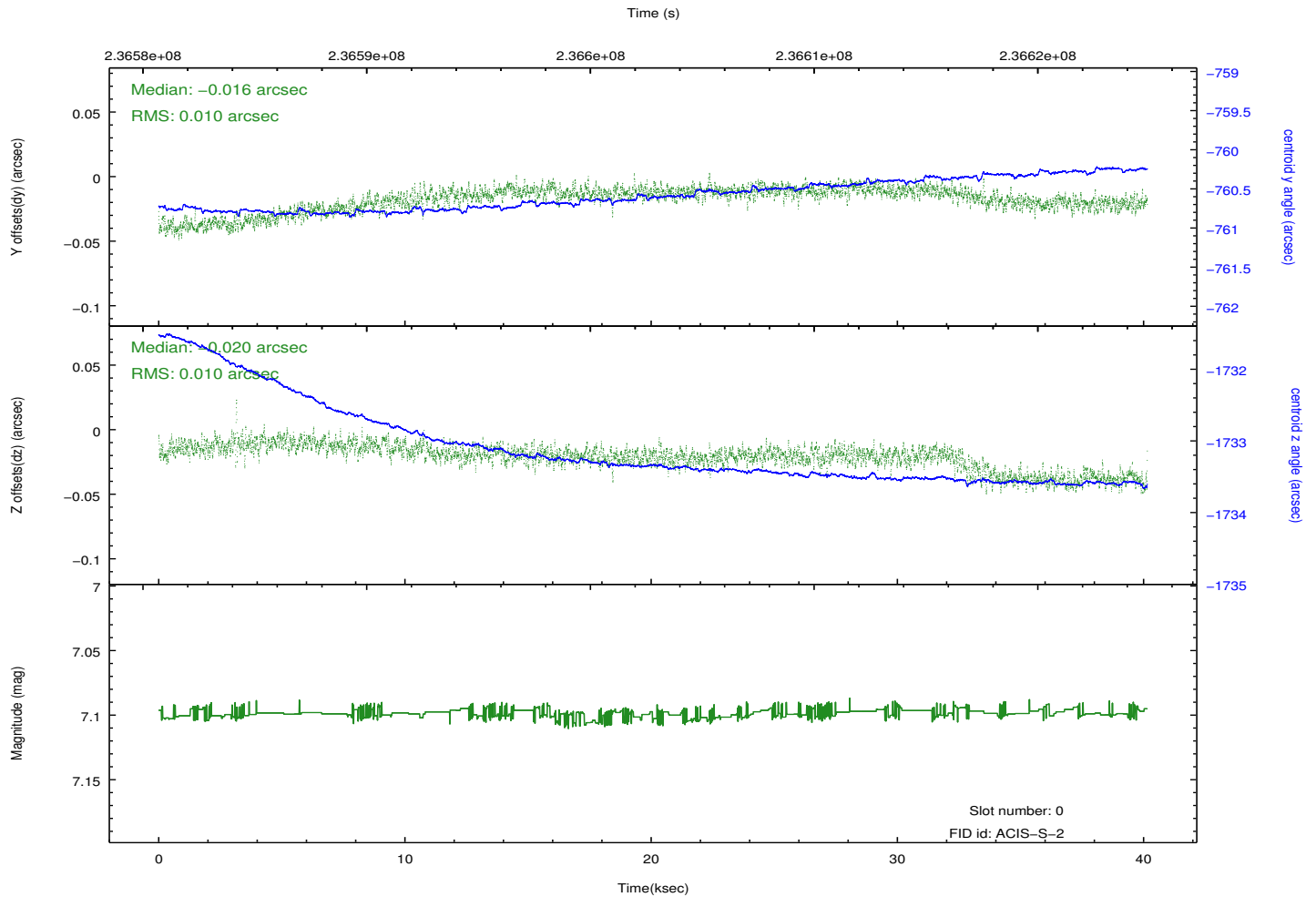
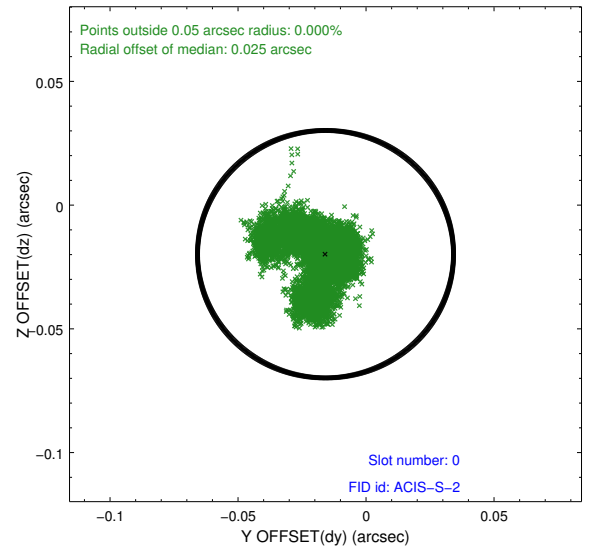
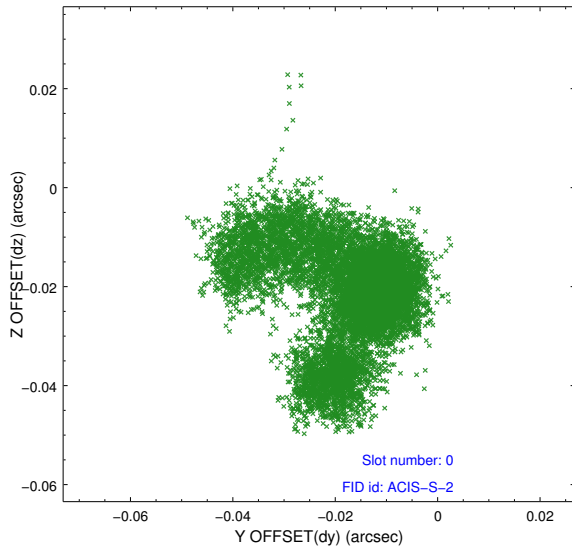


2.4.5 Slot 7

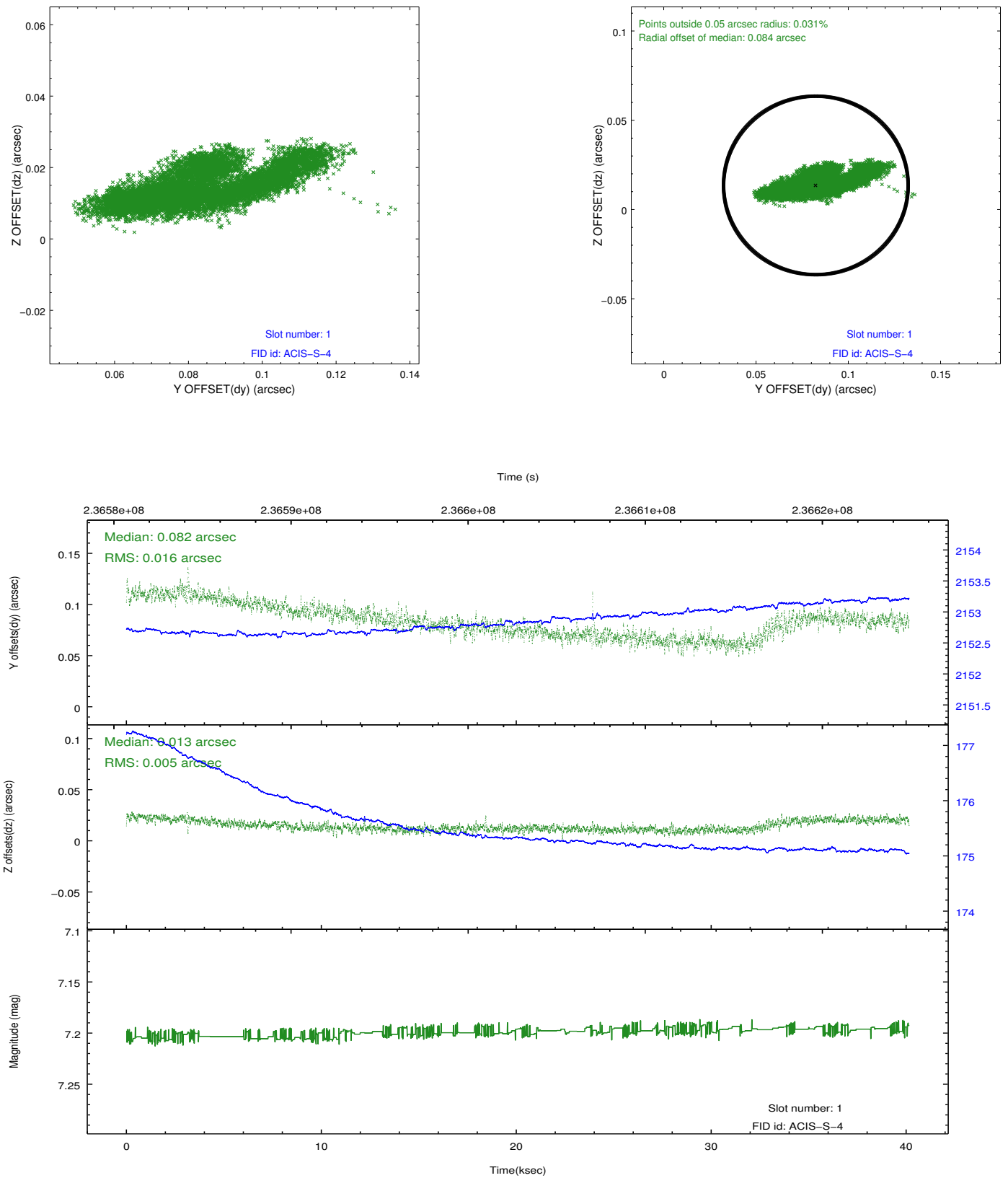


2.5 FID Slots

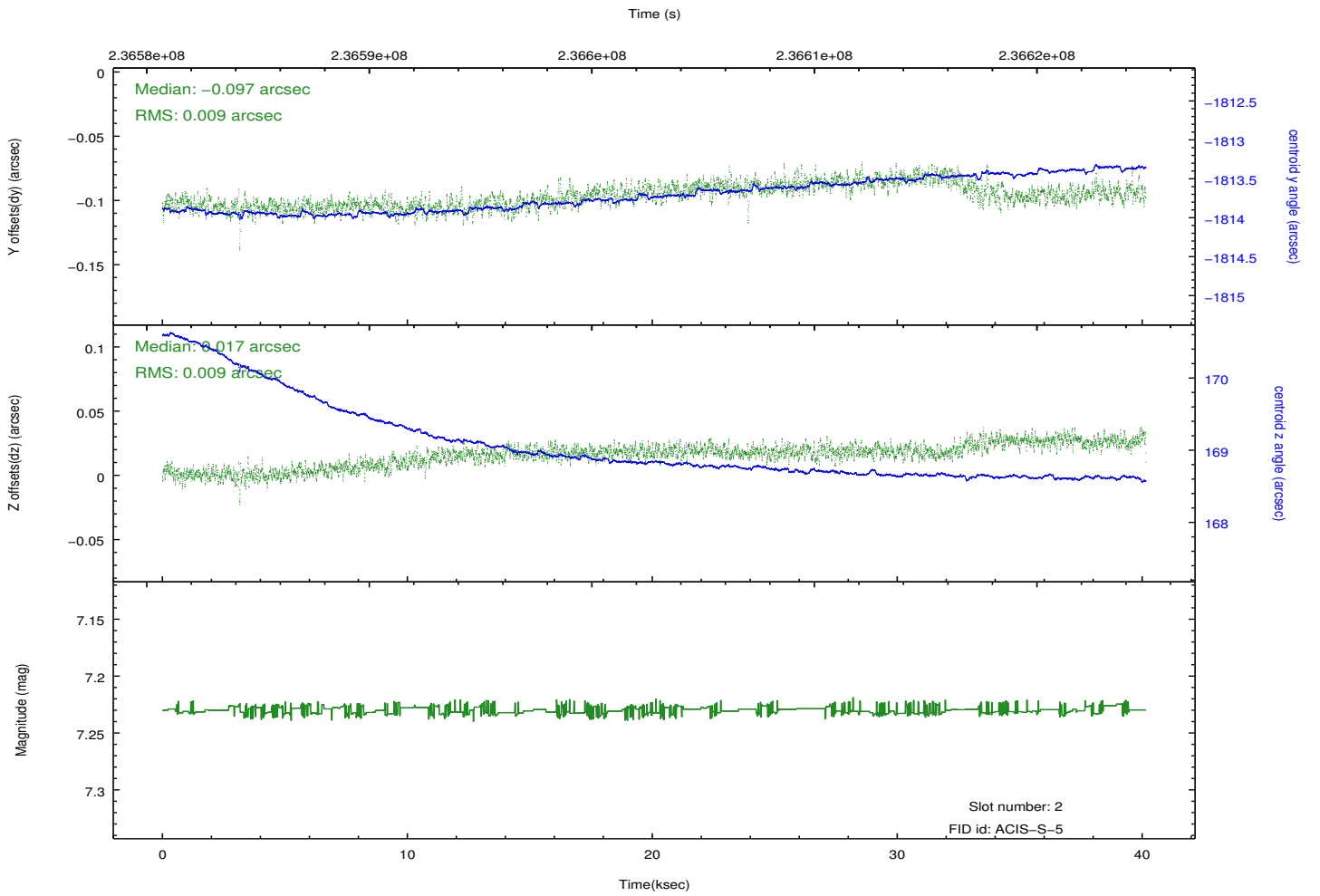
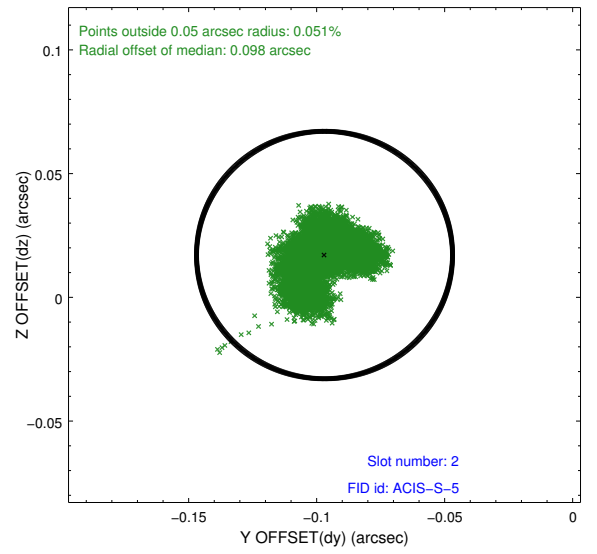
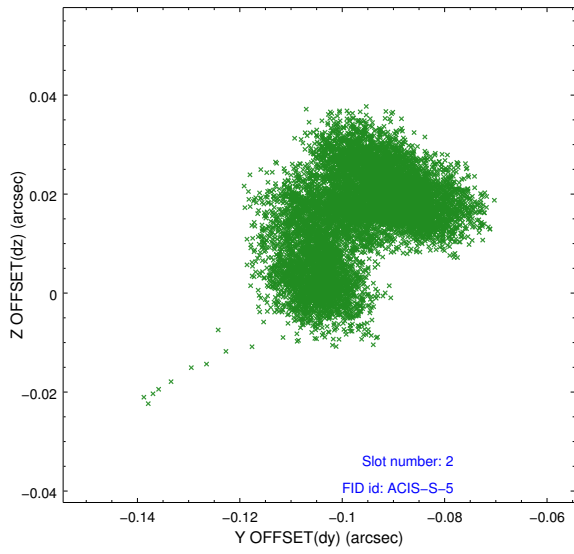
2.5.1 Slot 0



2.5.2 Slot 1



2.5.3 Slot 2



A Summary

A.1 Status

V&V Scientist	Beth Sundheim
V&V Date (YYYY-MM-DD)	2013.01.22
V&V Edition	1
V&V Disposition and Status	OK
V&V Charge Time	40.06075

A.2 Comments