

V&V Reference Report

L2 ASCDS Version : 8.5.1.1

Observation 5951 - L2 Version 3
Chandra X-Ray Center

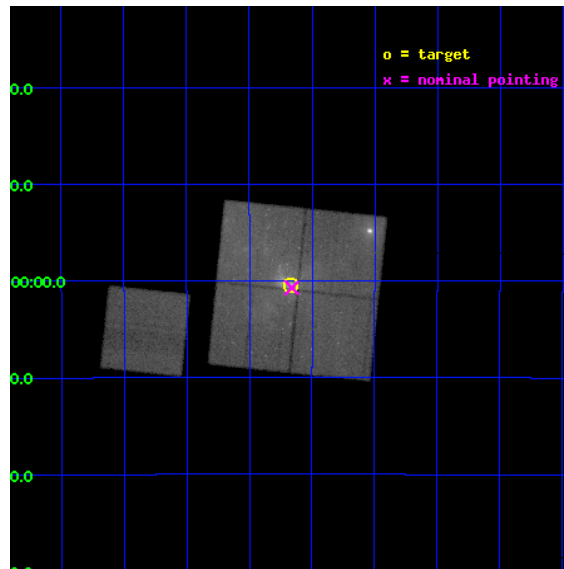
L2 Processing Date : Dec 26 2012

Contents

1	Front	2
2	OBI	3
2.1	OBI	3
2.1.1	Images	3
2.1.2	Bias	3
2.1.3	Parameters	4
2.1.4	Events	4
2.2	Compared Parameters	5
2.3	Aspect	6
2.4	Star Slots	9
2.4.1	Slot 3	9
2.4.2	Slot 4	10
2.4.3	Slot 5	11
2.4.4	Slot 6	12
2.4.5	Slot 7	13
2.5	FID Slots	14
2.5.1	Slot 0	14
2.5.2	Slot 1	15
2.5.3	Slot 2	16
A	Summary	17
A.1	Status	17
A.2	Comments	17

1 Front

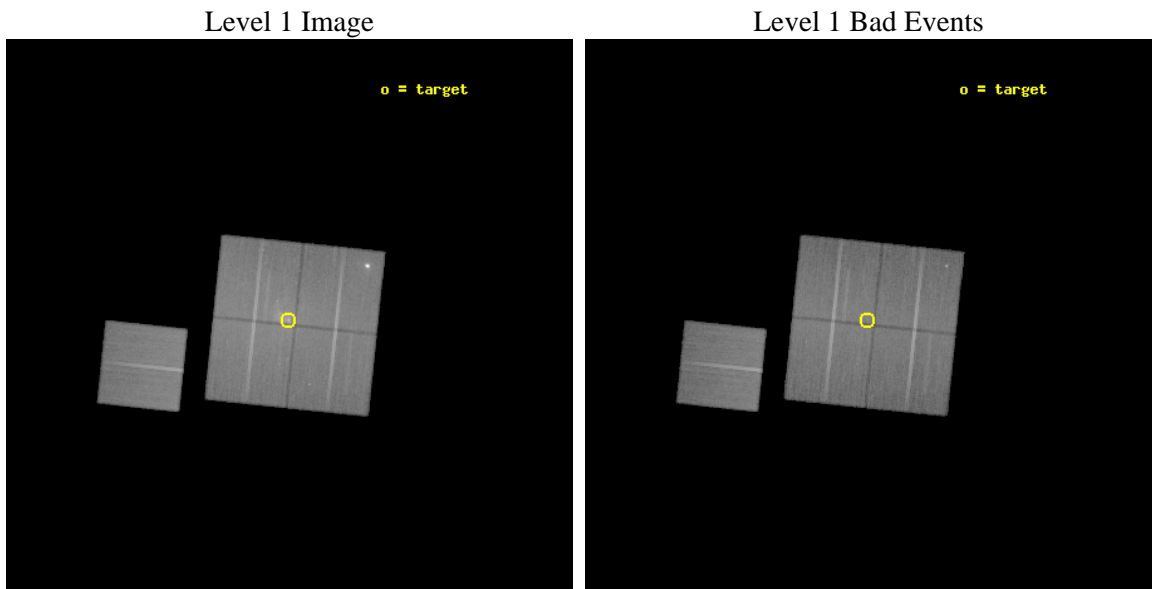
seq_num	600470	Sequence number
obs_id	5951	Observation id
title	Simultaneous Gamma-Ray to Sub-Millimeter Monitoring of Sagittarius A*	Proposal title
observer	Dr. Frederick Baganoff	Principal investigator
object	Sgr A*	Source name
dtycycle	0	
cycle	P	events from which exps? Prim/Second/Both
ra_targ	266.416667	Observer's specified target RA [deg]
dec_targ	-29.007778	Observer's specified target Dec [deg]
ra_nom	266.41512325163	Nominal RA [deg]
dec_nom	-29.012218499483	Nominal Dec [deg]
roll_nom	275.97432779315	Nominal Roll [deg]
revision	3	Processing version of data
ontime	45176.258922875	Sum of GTIs [s]
livetime	44585.99784177	Livetime [s]
ontime0	45179.399913102	Sum of GTIs [s]
ontime1	45179.399913102	Sum of GTIs [s]
ontime2	45179.399913102	Sum of GTIs [s]
ontime3	45176.258922875	Sum of GTIs [s]
ontime6	45179.399913102	Sum of GTIs [s]
l2events	483302	Number of level 2 events



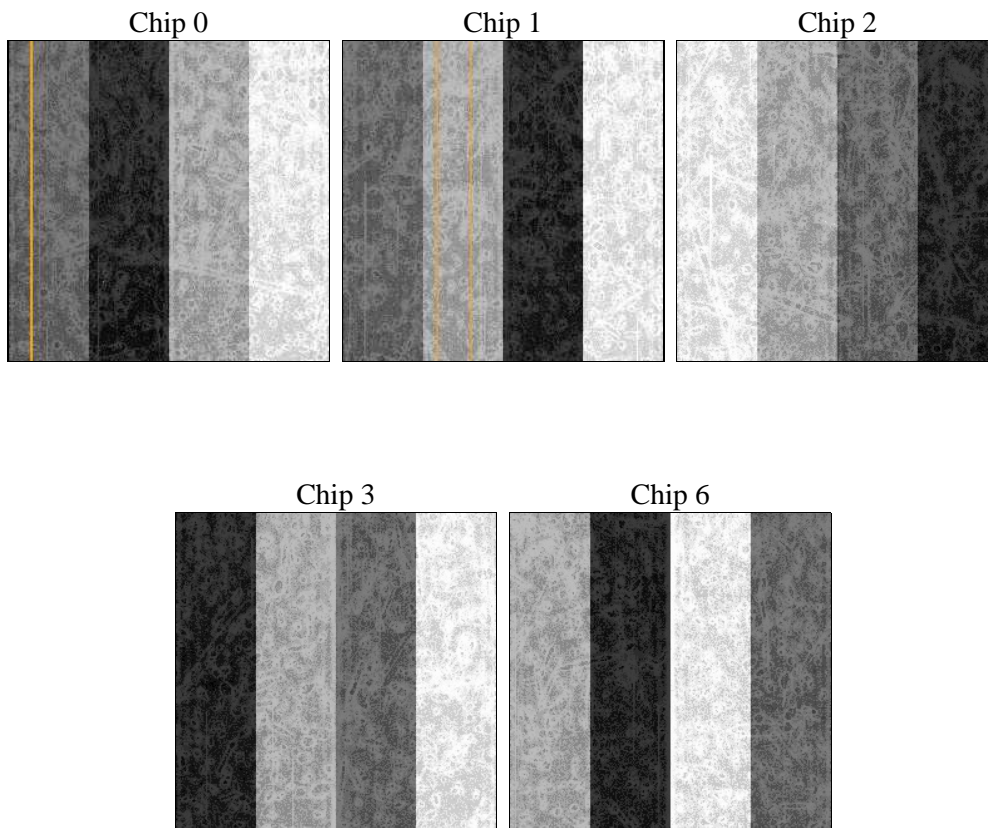
2 OBI

2.1 OBI

2.1.1 Images



2.1.2 Bias



2.1.3 Parameters

obi_num	1	Obi number	sched_exp_time	45000.000000	[s] Scheduled observation exposure time
ascdsver	8.5.1.1	Processing system revision	ontime	45176.258922875	Sum of GTIs [s]
caldbver	4.5.5	 	ontime0	45179.399913102	Sum of GTIs [s]
date	2012-12-26T16:53:37	Date and time of file creation	ontime1	45179.399913102	Sum of GTIs [s]
revision	3	Processing version of data	ontime2	45179.399913102	Sum of GTIs [s]
			ontime3	45176.258922875	Sum of GTIs [s]
			ontime6	45179.399913102	Sum of GTIs [s]
			l1events	2202197	Number of level 1 events

2.1.4 Events

	ccd 0	ccd 1	ccd 2	ccd 3	ccd 6
level 1 events	401472	452504	447812	486427	413982
rejected events	312684	319810	348863	343171	347852
rejected %	77%	70%	77%	70%	84%

	ccd 0	ccd 1	ccd 2	ccd 3	ccd 6
grade 0 events	48999	75051	57979	87797	31495
	12%	16%	12%	18%	7%
grade 1 events	387	655	534	694	256
	0%	0%	0%	0%	0%
grade 2 events	16528	24040	17063	22533	13501
	4%	5%	3%	4%	3%
grade 3 events	6393	9003	6670	9172	5373
	1%	1%	1%	1%	1%
grade 4 events	6210	8847	6868	9101	5217
	1%	1%	1%	1%	1%
grade 5 events	15688	16466	14926	17434	17024
	3%	3%	3%	3%	4%
grade 6 events	12282	17591	12100	16394	12055
	3%	3%	2%	3%	2%
grade 7 events	294985	300851	331672	323302	329061
	73%	66%	74%	66%	79%

2.2 Compared Parameters

Parameter	Planned	Actual	Parameter	Planned	Actual
Instrument	ACIS	ACIS	Obspar format version number	7	7
Detector	ACIS-01236	ACIS-01236	Obspar file type	PREDICTED	ACTUAL
Grating	NONE	NONE	Obspar update status	NONE	UPDATED
Data mode	FAINT	FAINT	Number of optional ACIS chips dropped	0	0
Observation mode	POINTING	POINTING	On-chip summing requested	N	N
[deg] Pointing RA	266.396628	266.4151232516307	Subarray requested	NONE	NONE
[deg] Pointing Dec	-28.990113	-29.01221849948281	Alternating exposures requested	N	N
[deg] Pointing Roll	275.756669	275.9743277931503	[s] Primary exposure time	0.000000	3.1
[s] Window start time (MET)	238880104.184000	238880104.184000			
[s] Window stop time (MET)	238929124.184000	238929124.184000			
[mm] SIM focus pos	-0.782348	-0.7809083437167272			
[mm] SIM defocus	0	0.001439871863259334			
[mm] SIM translation stage pos	-233.592463	-233.5874344608287			
[mm] SIM translation stage offset	0	-0.005018542100998502			
[s] Observation start time (MET)	238880104.184000	238878496.94041			
Observation start date	2005-07-27T19:34:00	2005-07-27T19:08:16			
[s] Observation end time (MET)	238925104.184000	238926468.99261			
Observation end date	2005-07-28T08:04:00	2005-07-28T08:27:48			
Read mode	TIMED	TIMED			

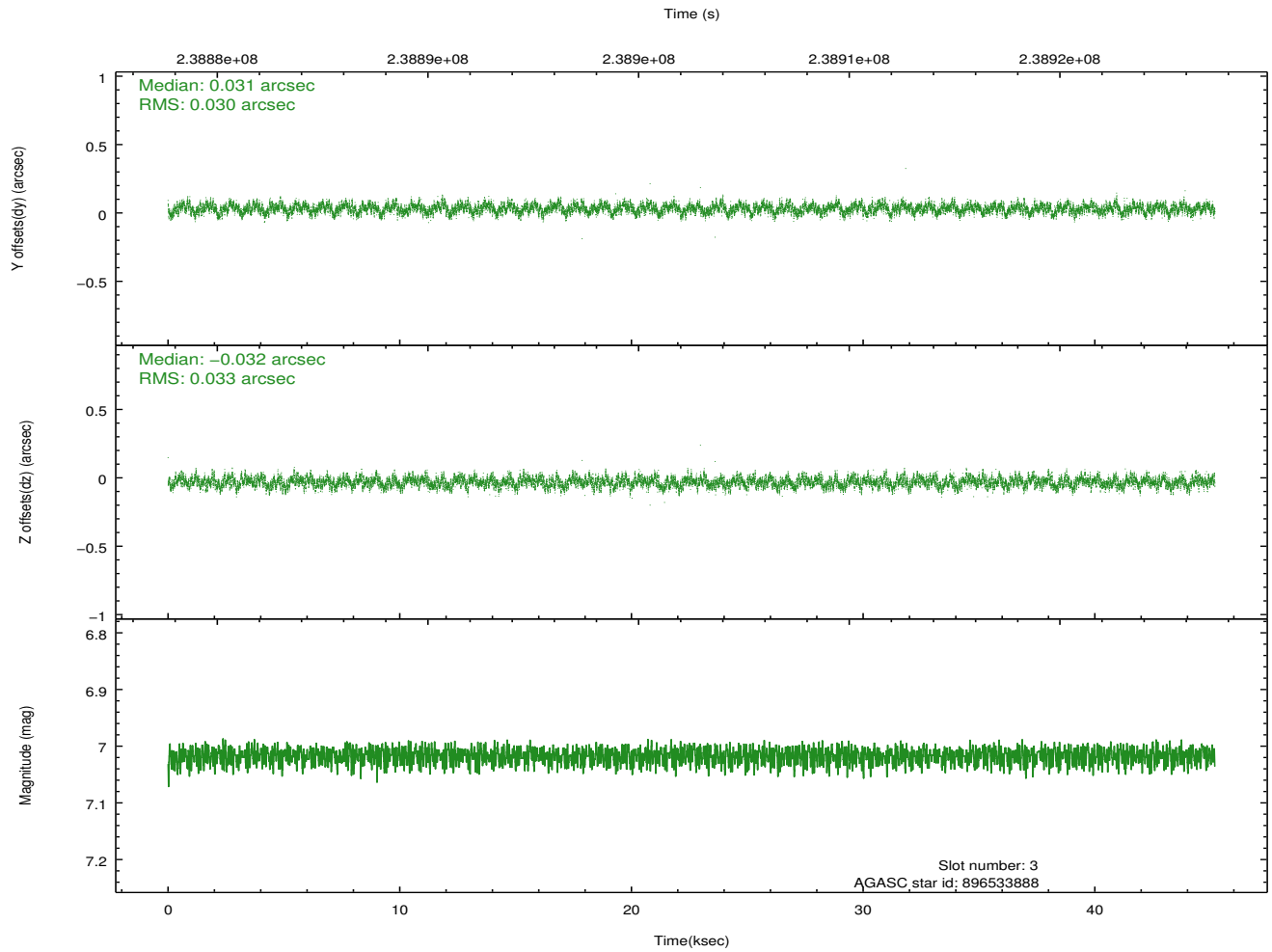
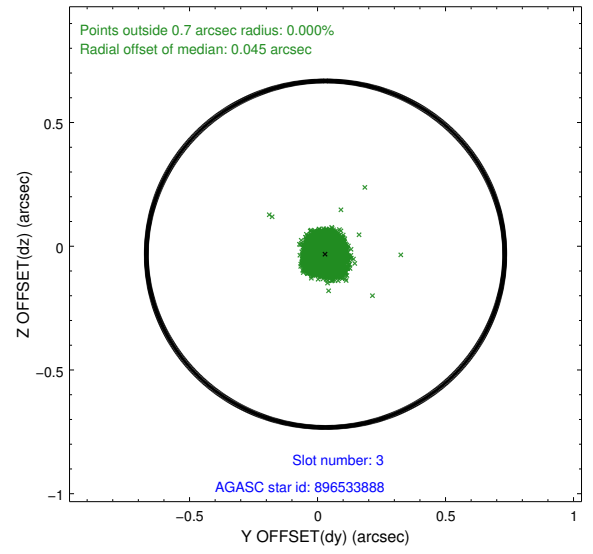
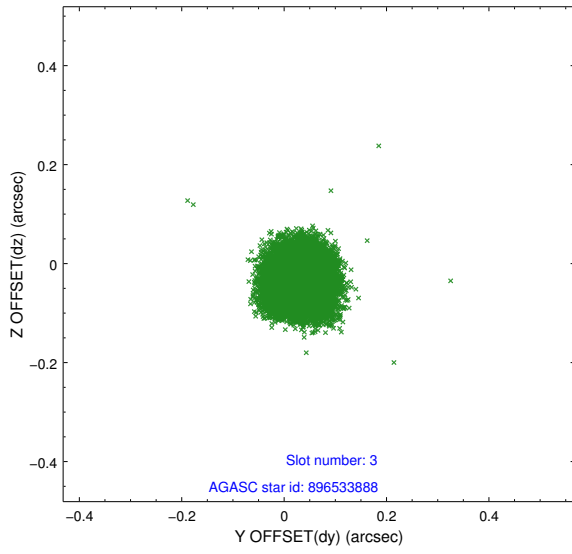
2.3 Aspect

Slot Statistics

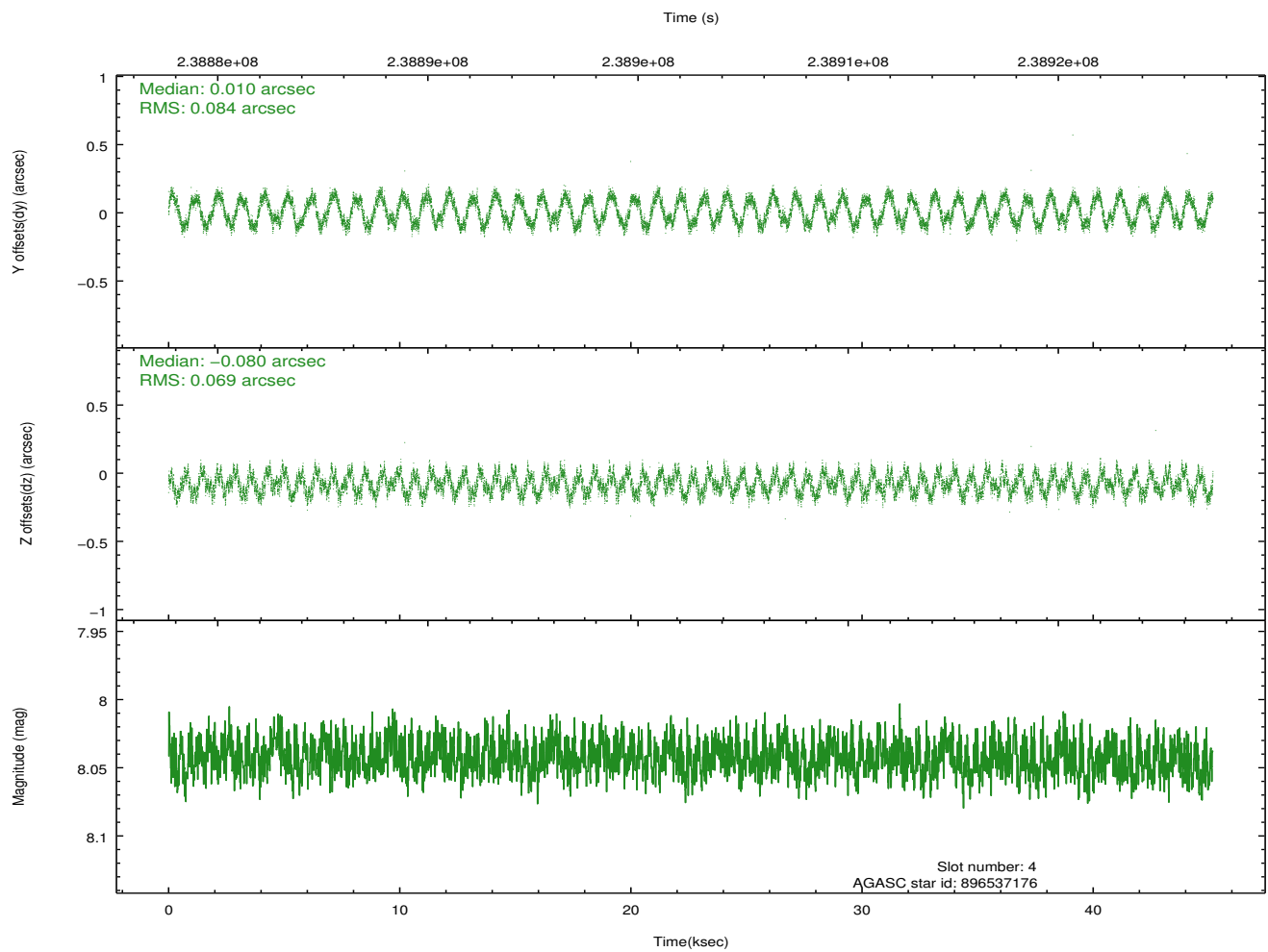
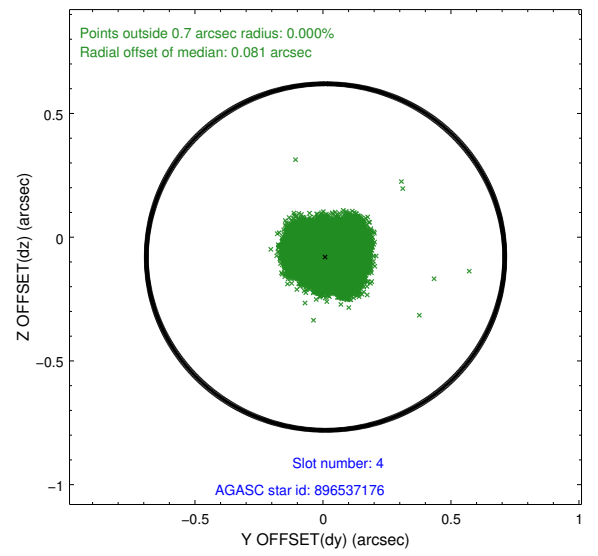
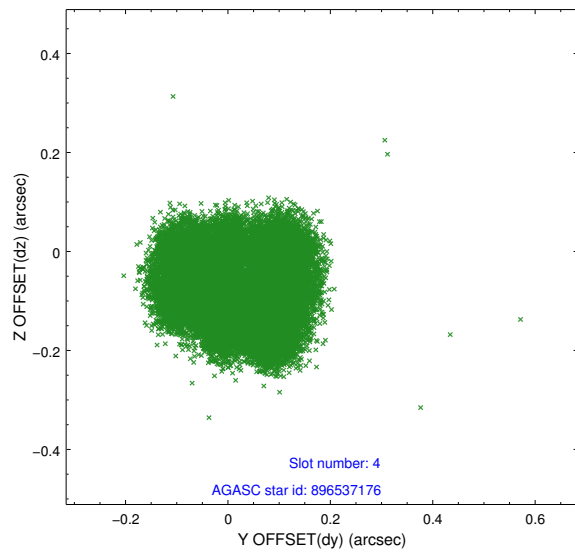
slot	status	id	mag	n_pts	med_dy	med_dz	dr1	dr2	ra	dec	mean_y	mean_z
0	FID	ACIS-I-1	7.25	11019	0.007	0.013	0.009	0.016	0.000000	0.000000	932.40	-833.41
1	FID	ACIS-I-5	7.23	11019	-0.164	0.026	0.008	0.014	0.000000	0.000000	-1815.89	1064.08
2	FID	ACIS-I-6	7.25	11019	0.066	0.031	0.008	0.013	0.000000	0.000000	398.00	1708.59
3	GUIDE	896533888	7.02	22041	0.031	-0.032	0.048	0.076	266.666434	-29.392757	1528.29	696.74
4	GUIDE	896537176	8.04	22035	0.010	-0.080	0.120	0.163	266.498272	-28.678259	-1084.37	431.95
5	GUIDE	896540808	7.47	22039	0.070	0.081	0.079	0.116	265.985401	-29.308604	1013.98	-1399.36
6	GUIDE	896541576	8.19	22039	-0.024	0.009	0.059	0.093	267.051055	-28.762912	-600.92	2136.29
7	GUIDE	896404568	7.86	22040	-0.087	0.024	0.052	0.084	265.687293	-28.431080	-2220.68	-2033.20

2.4 Star Slots

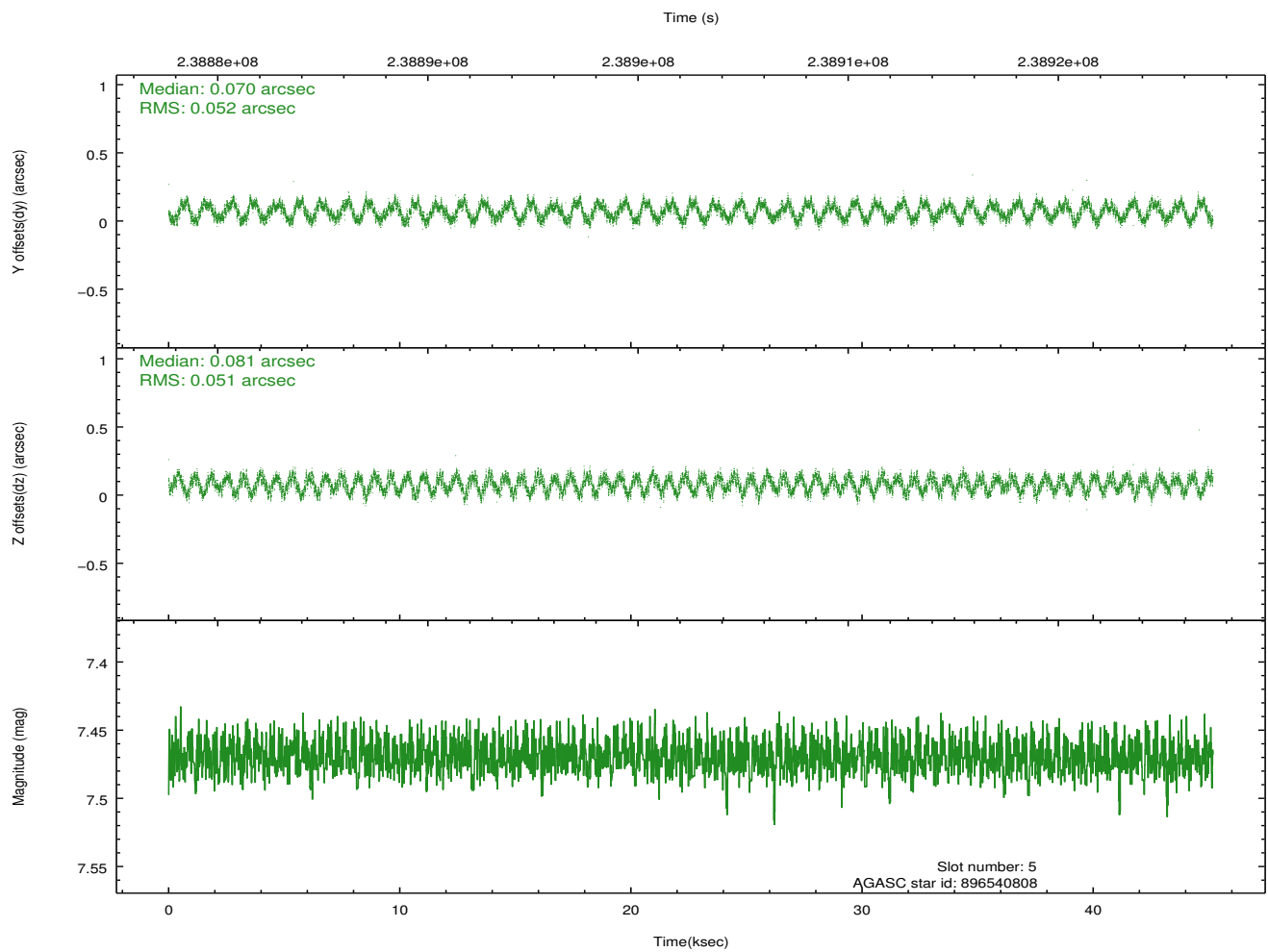
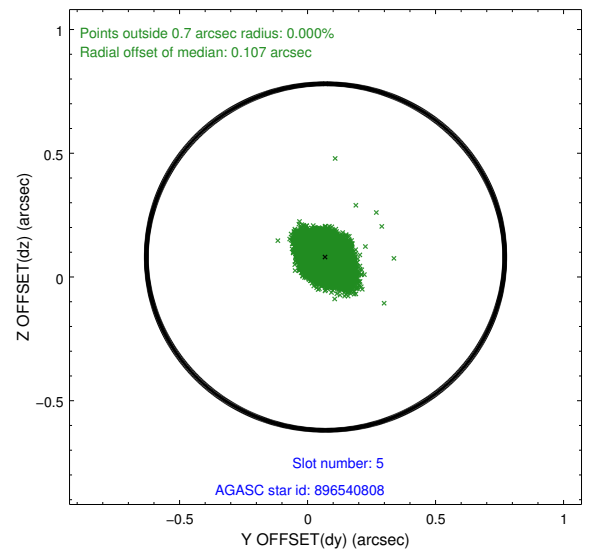
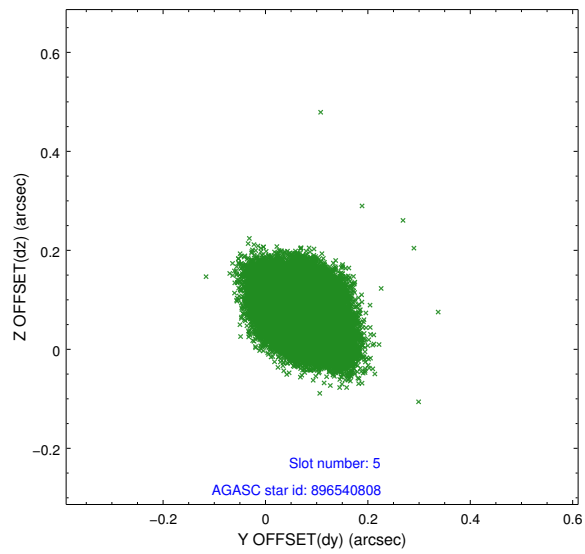
2.4.1 Slot 3



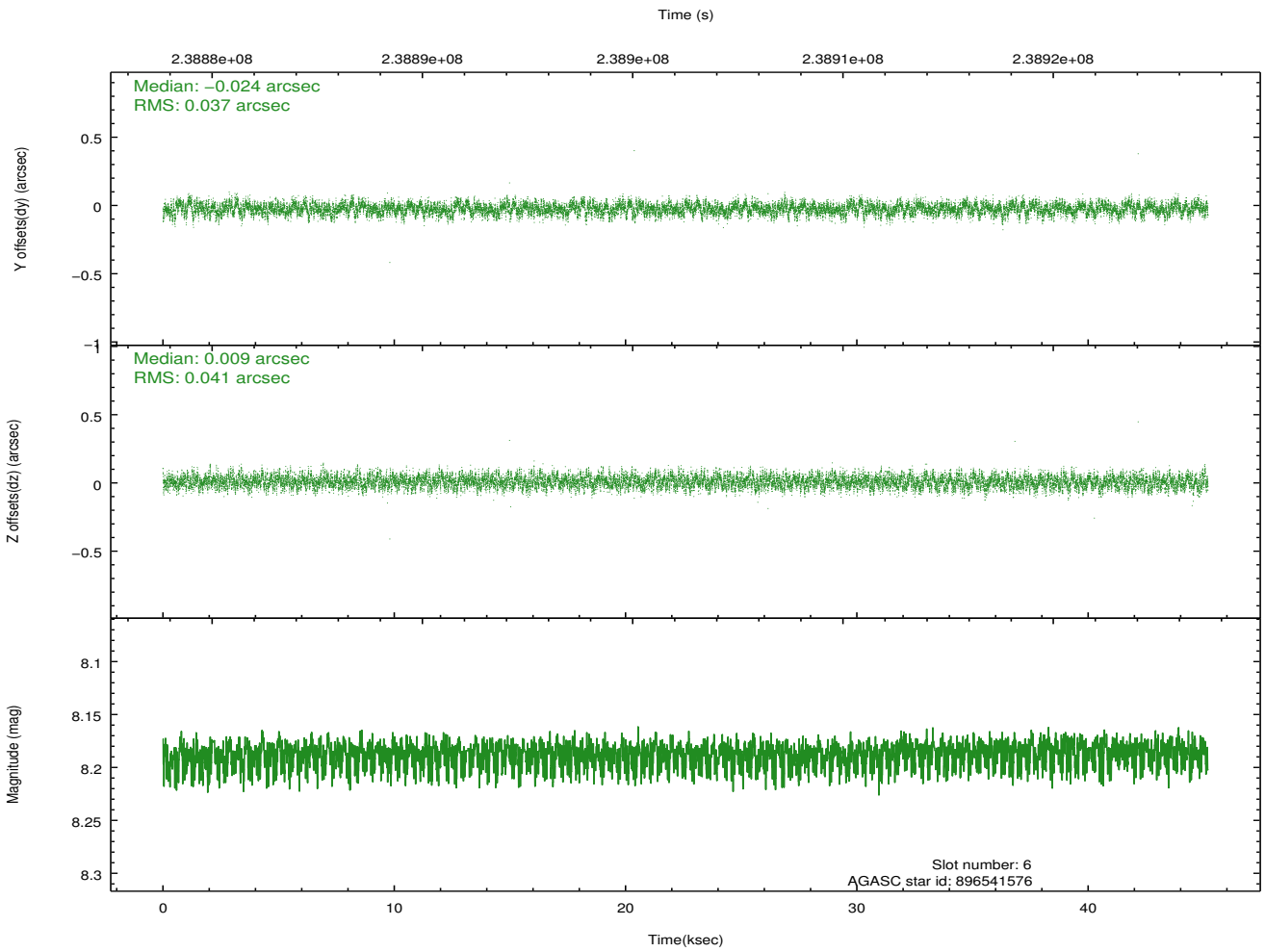
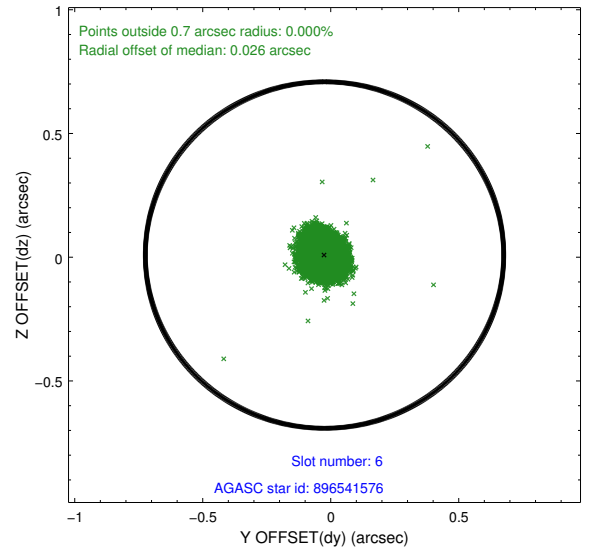
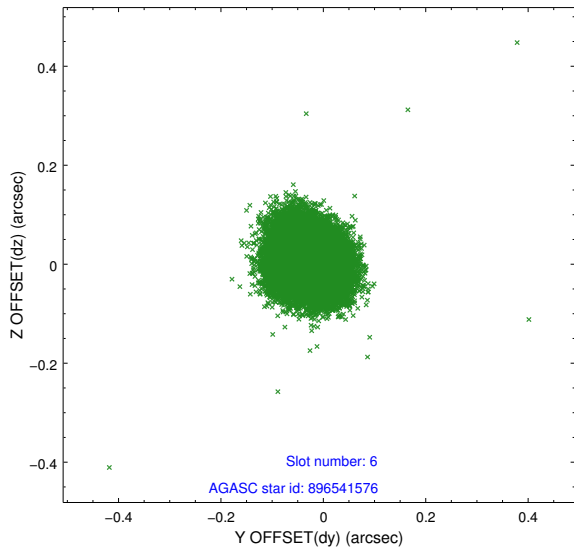
2.4.2 Slot 4



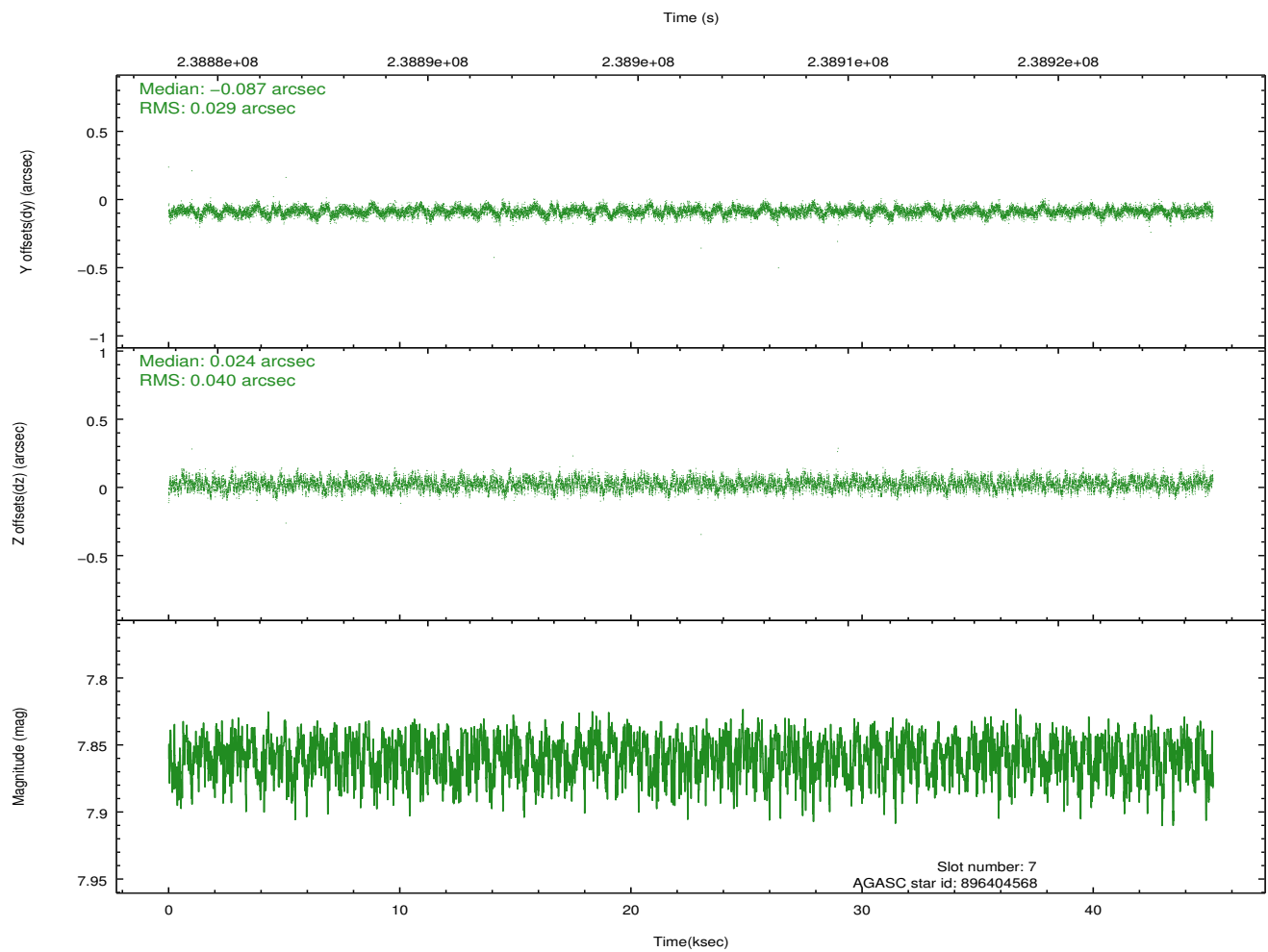
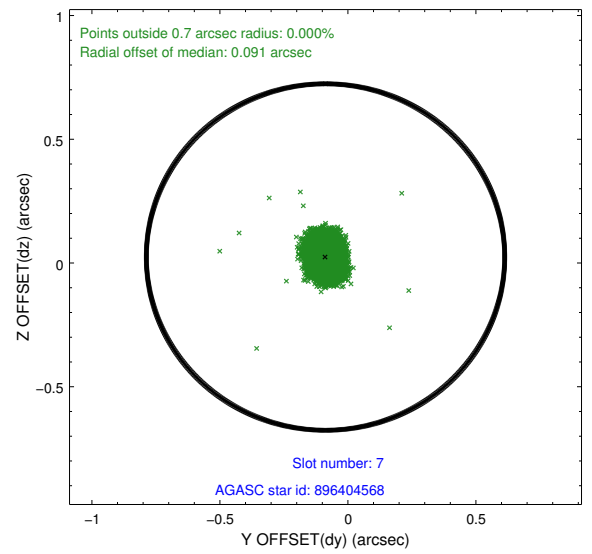
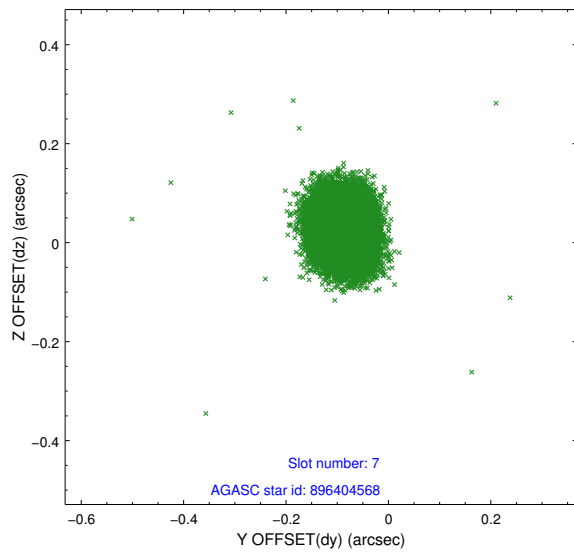
2.4.3 Slot 5



2.4.4 Slot 6

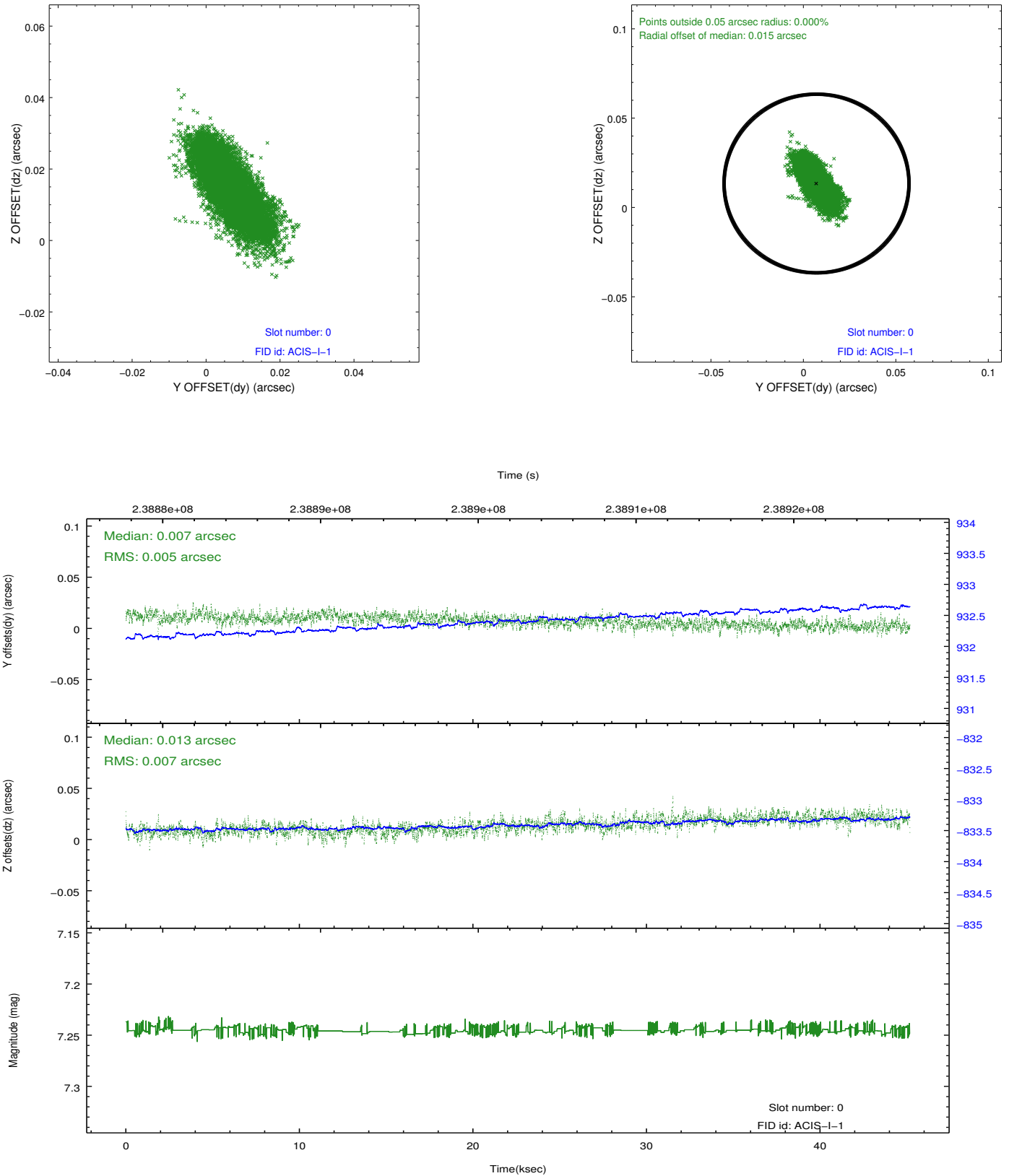


2.4.5 Slot 7

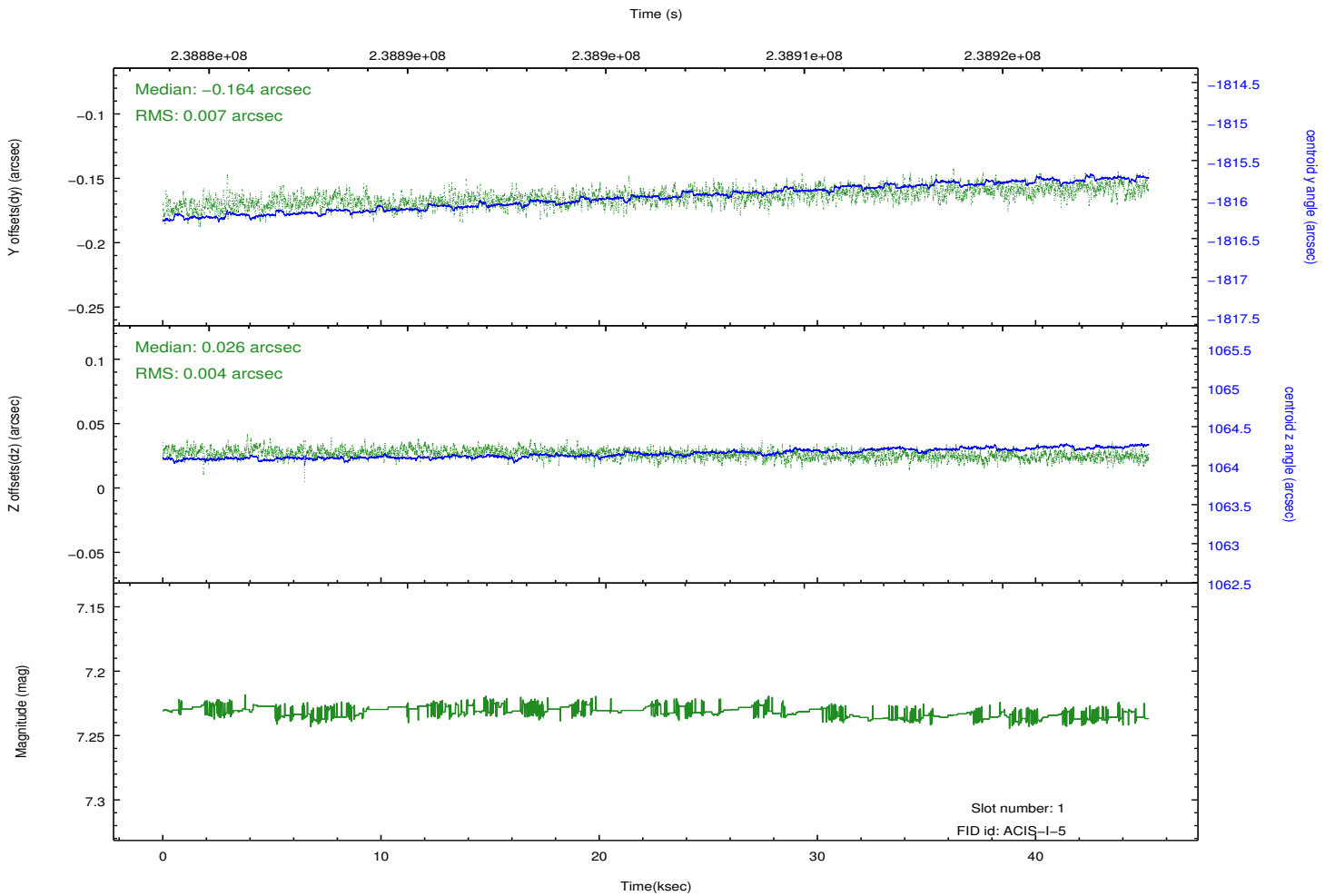
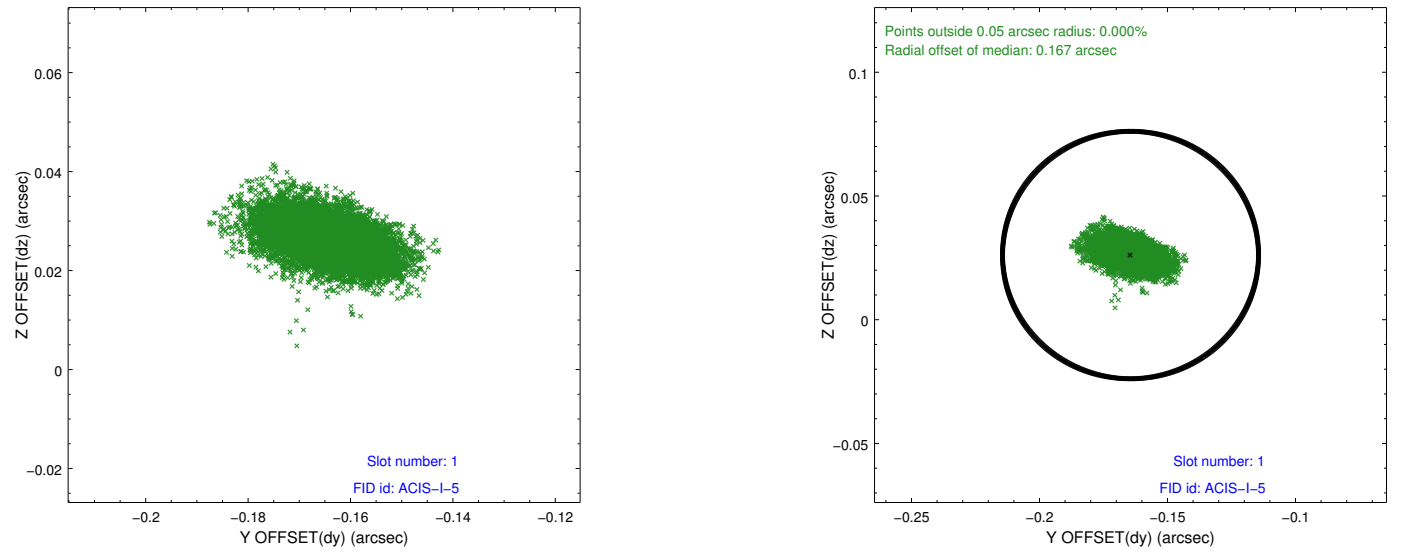


2.5 FID Slots

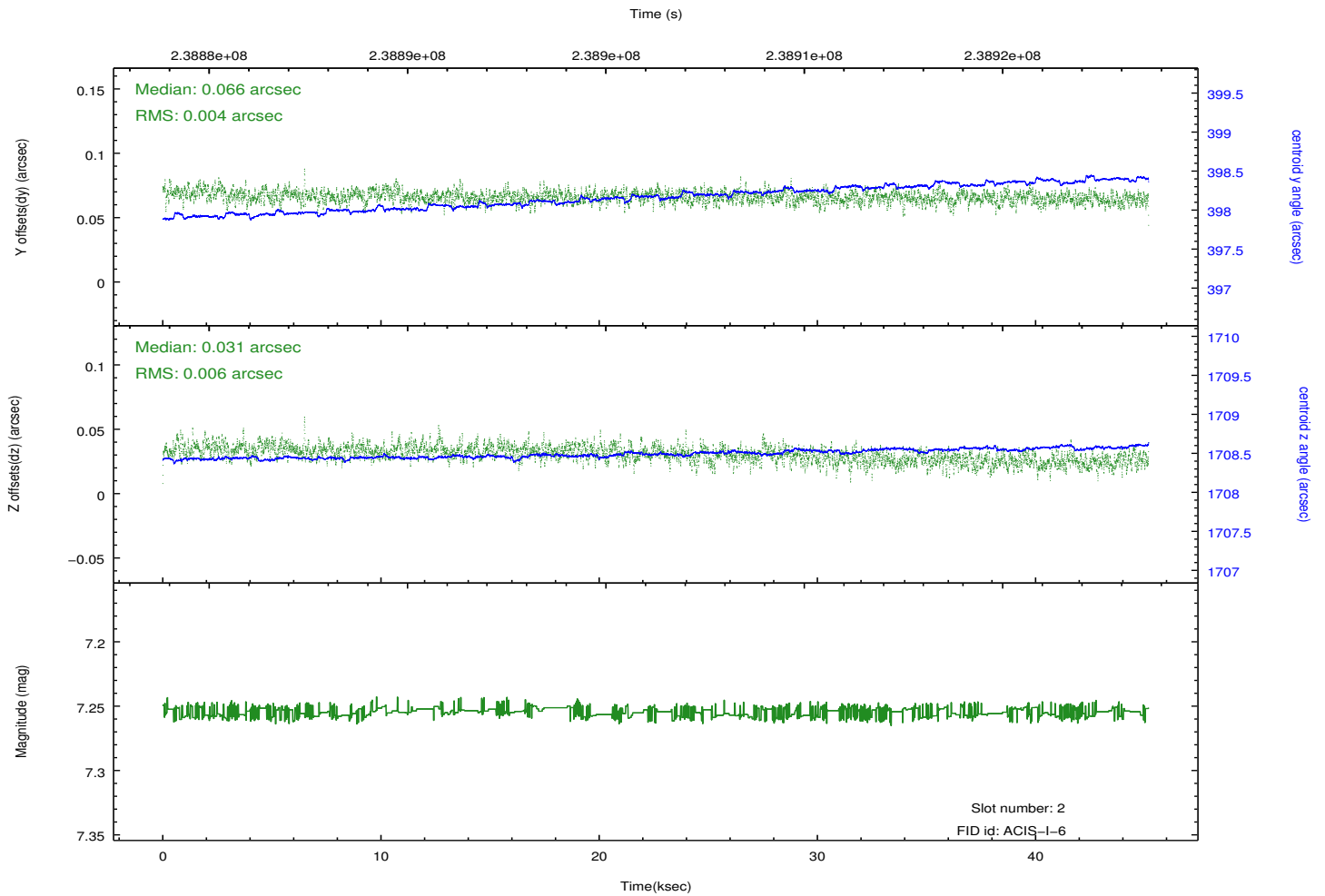
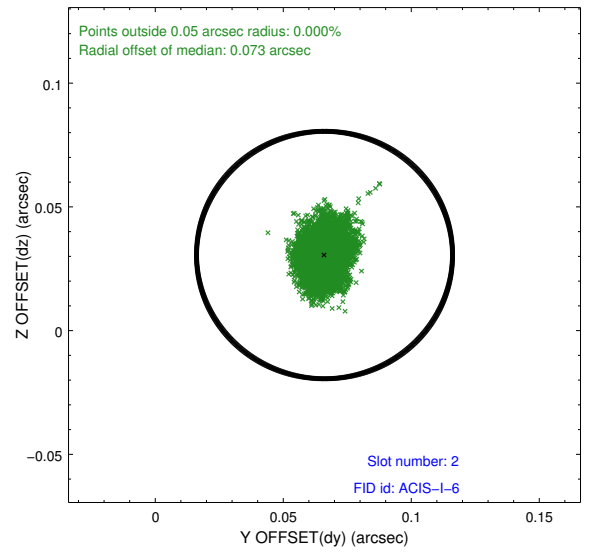
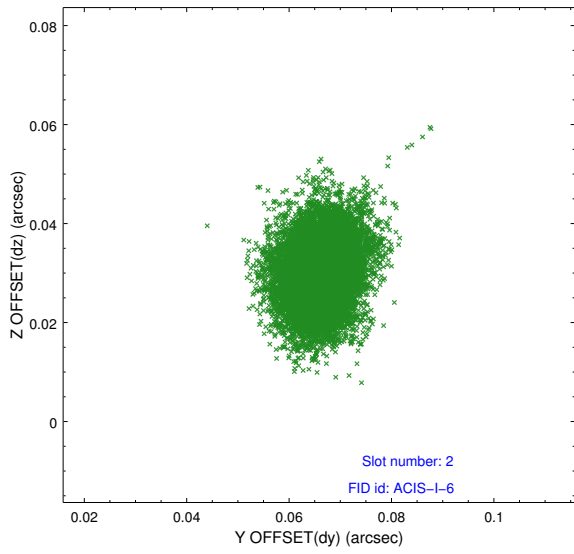
2.5.1 Slot 0



2.5.2 Slot 1



2.5.3 Slot 2



A Summary

A.1 Status

V&V Scientist	Beth Sundheim
V&V Date (YYYY-MM-DD)	2013.01.14
V&V Edition	1
V&V Disposition and Status	OK
V&V Charge Time	46.40847

A.2 Comments

Charge time for this ObsId remains at previous value of 46.40847 ks.
Window preference met.