

V&V Reference Report

L2 ASCDS Version : 7.6.7.2

Observation 60201 - L2 Version 001
Chandra X-Ray Center

L2 Processing Date : May 1 2006

Contents

1	Front	2
2	OBI	3
2.1	OBI	3
2.1.1	Images	3
2.1.2	Bias	3
2.1.3	Parameters	4
2.1.4	Events	4
2.2	Compared Parameters	5
2.3	Aspect	6
2.4	Star Slots	8
2.5	FID Slots	8
A	Summary	9
A.1	Status	9
A.2	Comments	9

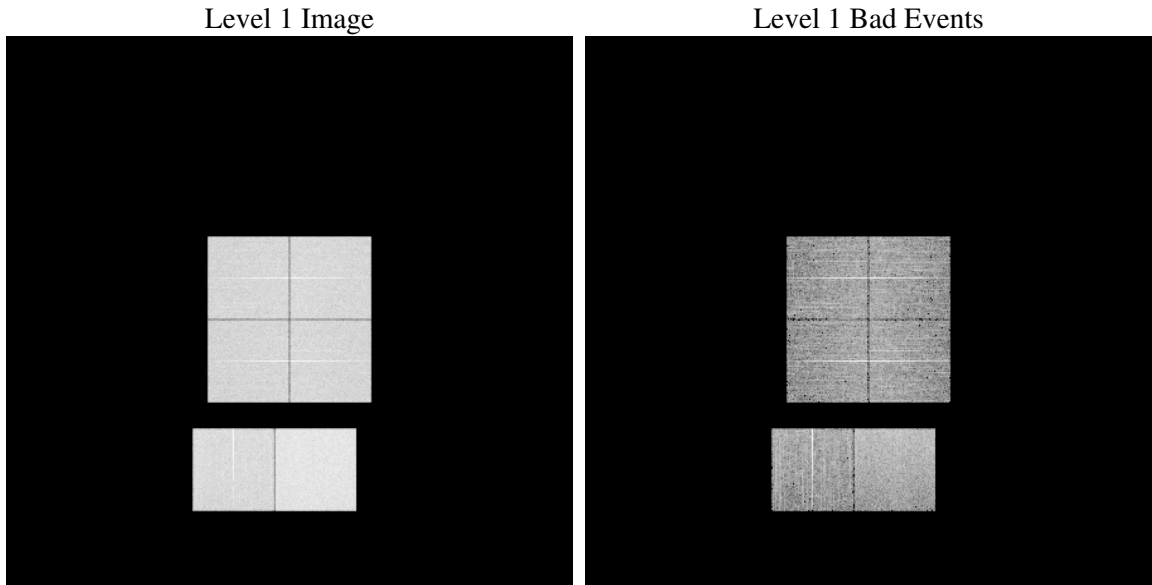
1 Front

seq_num	
obs_id	60201
title	ACIS-012367 diagnostics
observer	CHANDRA engineering request/realtime commanding
object	
dtcycle	0
cycle	P
ra_targ	0.0
dec_targ	0.0
ra_nom	305.97703463806
dec_nom	-14.981971767191
roll_nom	107.93408106416
revision	2
ontime	7798.0274855494
livetime	7699.284166119
ontime0	5772.4554621577
ontime1	5966.956333369
ontime2	5561.8738636672
ontime3	5681.6265907884
ontime6	6103.1592070758
ontime7	7798.0274855494
l2events	1095753

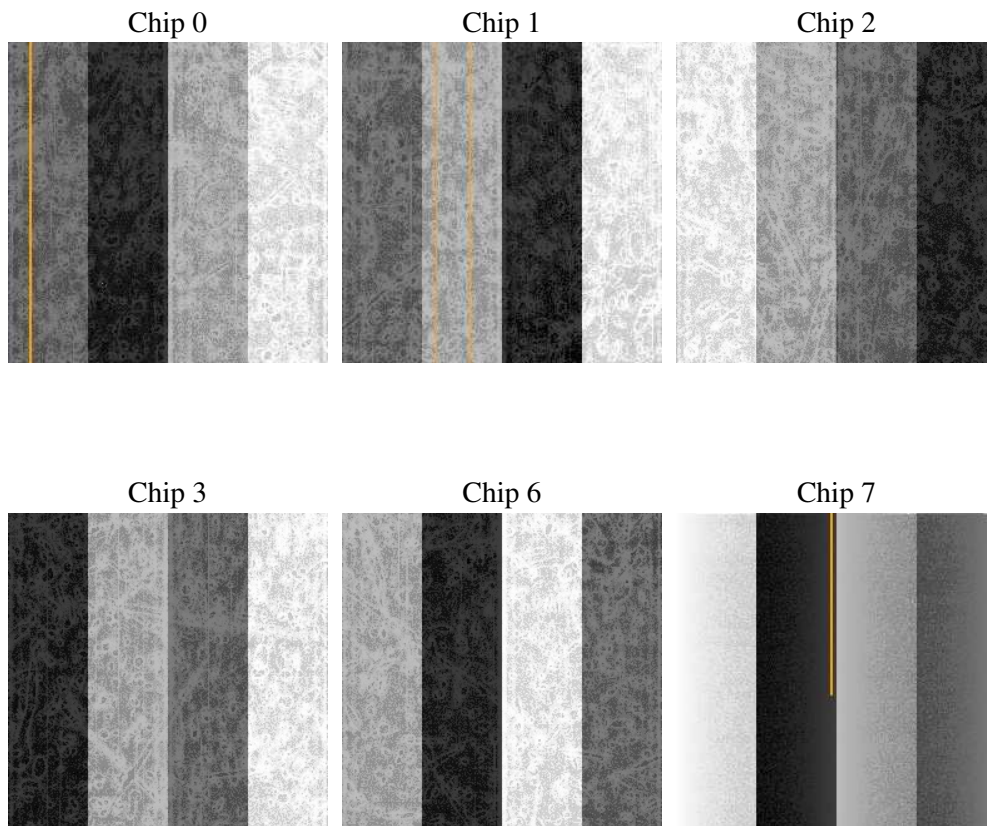
2 OBI

2.1 OBI

2.1.1 Images



2.1.2 Bias



2.1.3 Parameters

obi_num	0
ascdsver	7.6.7.2
caldbver	3.2.1
date	2006-05-01T22:40:54
revision	2

sched_exp_time	0.0
ontime	7801.1079650223
ontime0	5775.4949016273
ontime1	5969.9547328353
ontime2	5564.8312231302
ontime3	5684.7481102645
ontime6	6106.0755265653
ontime7	7801.1079650223
l1events	1415602

2.1.4 Events

	ccd 0	ccd 1	ccd 2	ccd 3	ccd 6	ccd 7
level 1 events	216050	224015	210947	216981	239880	307729
rejected events	40645	41264	39822	42898	44563	56815
rejected %	18%	18%	18%	19%	18%	18%

	ccd 0	ccd 1	ccd 2	ccd 3	ccd 6	ccd 7
grade 0 events	96175	100360	95604	97867	105672	43821
	44%	44%	45%	45%	44%	14%
grade 1 events	517	479	596	600	568	129
	0%	0%	0%	0%	0%	0%
grade 2 events	30754	32427	29113	29592	33960	76098
	14%	14%	13%	13%	14%	24%
grade 3 events	11580	11471	11121	11357	12385	18177
	5%	5%	5%	5%	5%	5%
grade 4 events	11324	11680	11211	11332	12085	17996
	5%	5%	5%	5%	5%	5%
grade 5 events	2644	2742	2405	2735	2958	6971
	1%	1%	1%	1%	1%	2%
grade 6 events	25669	26899	24178	24037	31300	94917
	11%	12%	11%	11%	13%	30%
grade 7 events	37387	37957	36719	39461	40952	49620
	17%	16%	17%	18%	17%	16%

2.2 Compared Parameters

Parameter	Planned	Actual	Parameter	Planned	Actual
Instrument	ACIS	ACIS	Obspar format version number	6	6
Detector	ACIS-012367	ACIS-012367	Obspar file type	PREDICTED	ACTUAL
Grating	NONE	NONE	Obspar update status	NONE	UPDATED
Data mode	FAINT	FAINT	On-chip summing requested	N	N
Observation mode	SECONDARY	SECONDARY	Subarray requested	NONE	NONE
Pointing RA	0	305.9770346380565	Alternating exposures requested	N	N
Pointing Dec	0	-14.98197176719109	Primary exposure time	0.000000	3.2
Pointing Roll	0.0	107.9340810641601			
SIM focus pos (mm)	-0.782348	-0.7809083437167272			
SIM defocus (mm)	0	0.7524282956875696			
SIM translation stage pos (mm)	-233.592463	250.466033080201			
SIM translation stage offset (mm)	0	-0.01005468664627074			
Observation start time	203320329.500863	203320328.47586			
Observation start date	2004-06-11T05:52:10	2004-06-11T05:52:08			
Observation end time	203341126.751784	203341125.72678			
Observation end date	2004-06-11T11:38:47	2004-06-11T11:38:45			
Read mode	TIMED	TIMED			

2.3 Aspect

2.4 Star Slots

2.5 FID Slots

A Summary

A.1 Status

V&V Scientist	Jen Lauer
V&V Date (YYYY-MM-DD)	2006.05.02
V&V Edition	1
V&V Disposition and Status	OK
V&V Charge Time	7.79802748

A.2 Comments