

V&V Reference Report

L2 ASCDS Version : 8.5.1

Observation 6051 - L2 Version 3
Chandra X-Ray Center

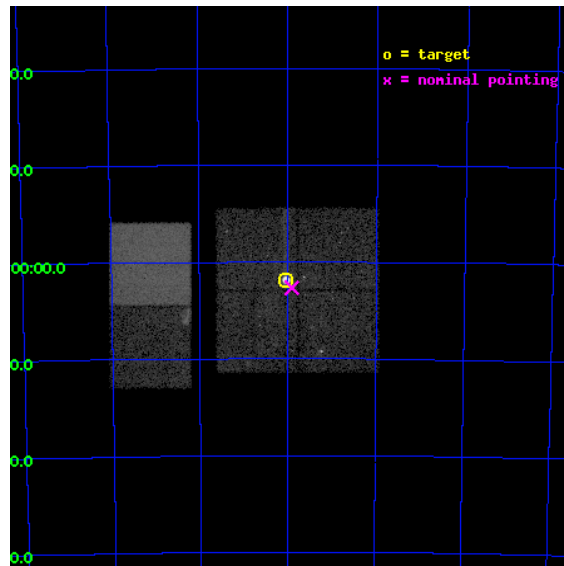
L2 Processing Date : Dec 16 2012

Contents

1	Front	2
2	OBI	3
2.1	OBI	3
2.1.1	Images	3
2.1.2	Bias	3
2.1.3	Parameters	4
2.1.4	Events	4
2.2	Compared Parameters	5
2.3	Aspect	6
2.4	Star Slots	9
2.4.1	Slot 3	9
2.4.2	Slot 4	10
2.4.3	Slot 5	11
2.4.4	Slot 6	12
2.4.5	Slot 7	13
2.5	FID Slots	14
2.5.1	Slot 0	14
2.5.2	Slot 1	15
2.5.3	Slot 2	16
A	Summary	17
A.1	Status	17
A.2	Comments	17

1 Front

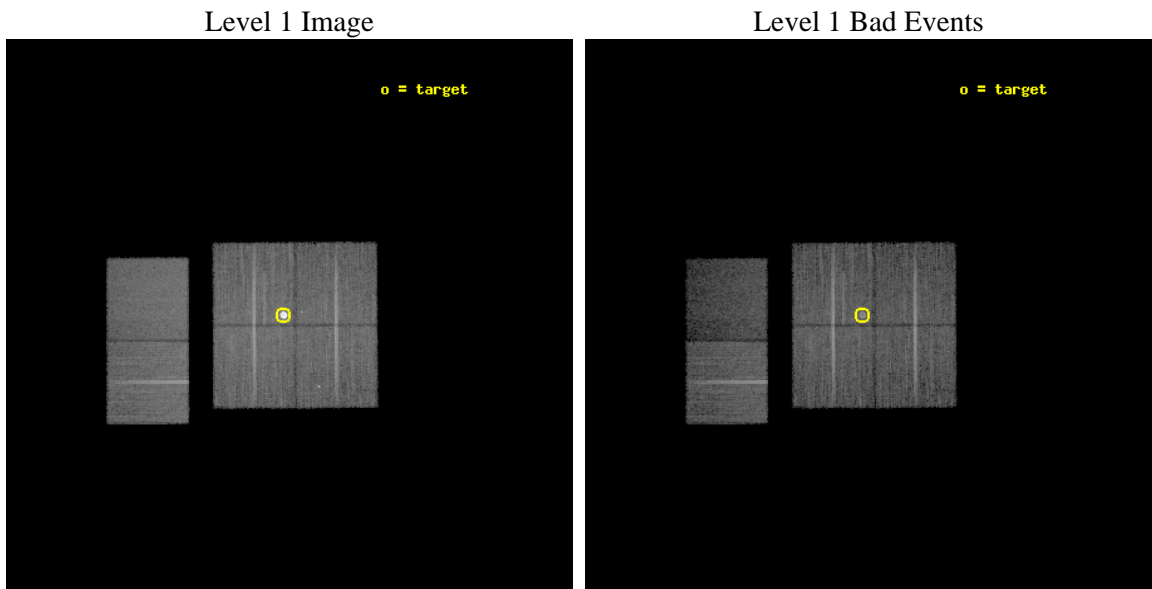
seq_num	590378	Sequence number
obs_id	6051	Observation id
title	AO6A ACIS-I Calibration Observations of E0102-72	Proposal title
observer	Dr. CXC Calibration	Principal investigator
object	E0102-72[I3,-120,-0.5,0.5,0]	Source name
dtycycle	0	
cycle	P	events from which exps? Prim/Second/Both
ra_targ	16.01	Observer's specified target RA [deg]
dec_targ	-72.032028	Observer's specified target Dec [deg]
ra_nom	15.976842252798	Nominal RA [deg]
dec_nom	-72.044573892967	Nominal Dec [deg]
roll_nom	269.80584365885	Nominal Roll [deg]
revision	3	Processing version of data
ontime	18150.399932384	Sum of GTIs [s]
livetime	17920.568639582	Livetime [s]
ontime0	18147.158962101	Sum of GTIs [s]
ontime1	18150.399932384	Sum of GTIs [s]
ontime2	18147.158942163	Sum of GTIs [s]
ontime3	18150.399932384	Sum of GTIs [s]
ontime6	18147.158991992	Sum of GTIs [s]
ontime7	18150.399932384	Sum of GTIs [s]
l2events	151500	Number of level 2 events



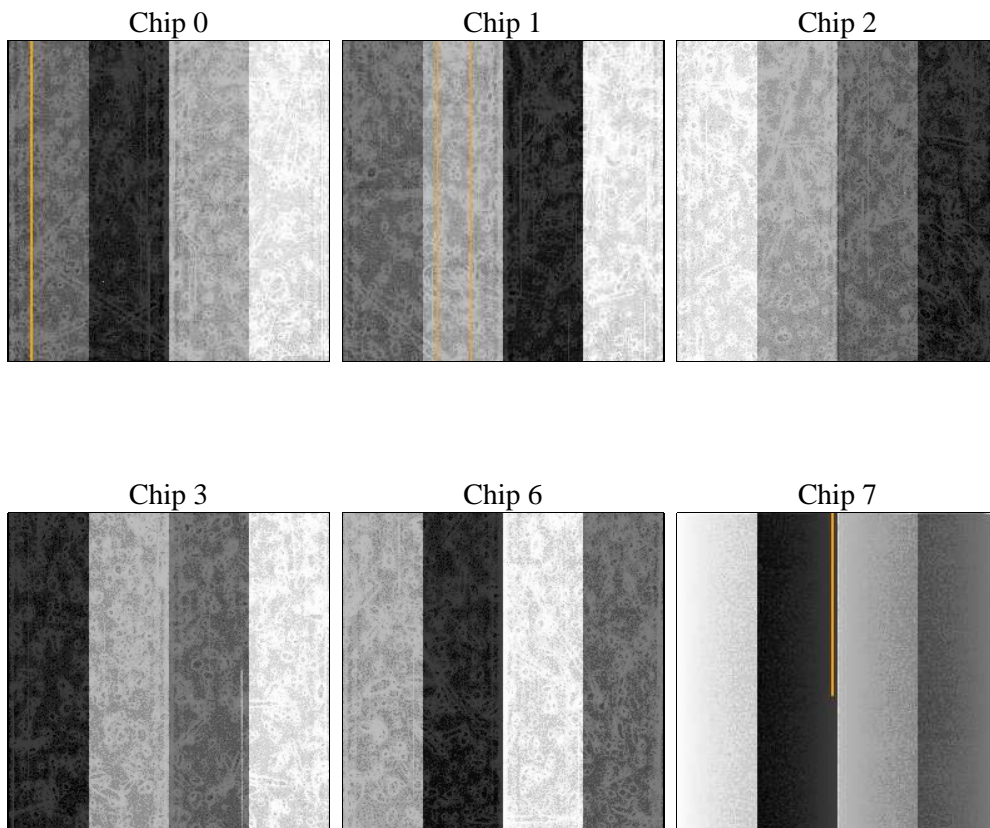
2 OBI

2.1 OBI

2.1.1 Images



2.1.2 Bias



2.1.3 Parameters

obi_num	0	Obi number	sched_exp_time	18000.000000	[s] Scheduled observation exposure time
ascdsver	8.5.1	Processing system revision	ontime	18150.399932384	Sum of GTIs [s]
caldsver	4.5.5	 	ontime0	18147.158962101	Sum of GTIs [s]
date	2012-12-15T23:11:24	Date and time of file creation	ontime1	18150.399932384	Sum of GTIs [s]
revision	3	Processing version of data	ontime2	18147.158942163	Sum of GTIs [s]
			ontime3	18150.399932384	Sum of GTIs [s]
			ontime6	18147.158991992	Sum of GTIs [s]
			ontime7	18150.399932384	Sum of GTIs [s]
			l1events	686077	Number of level 1 events

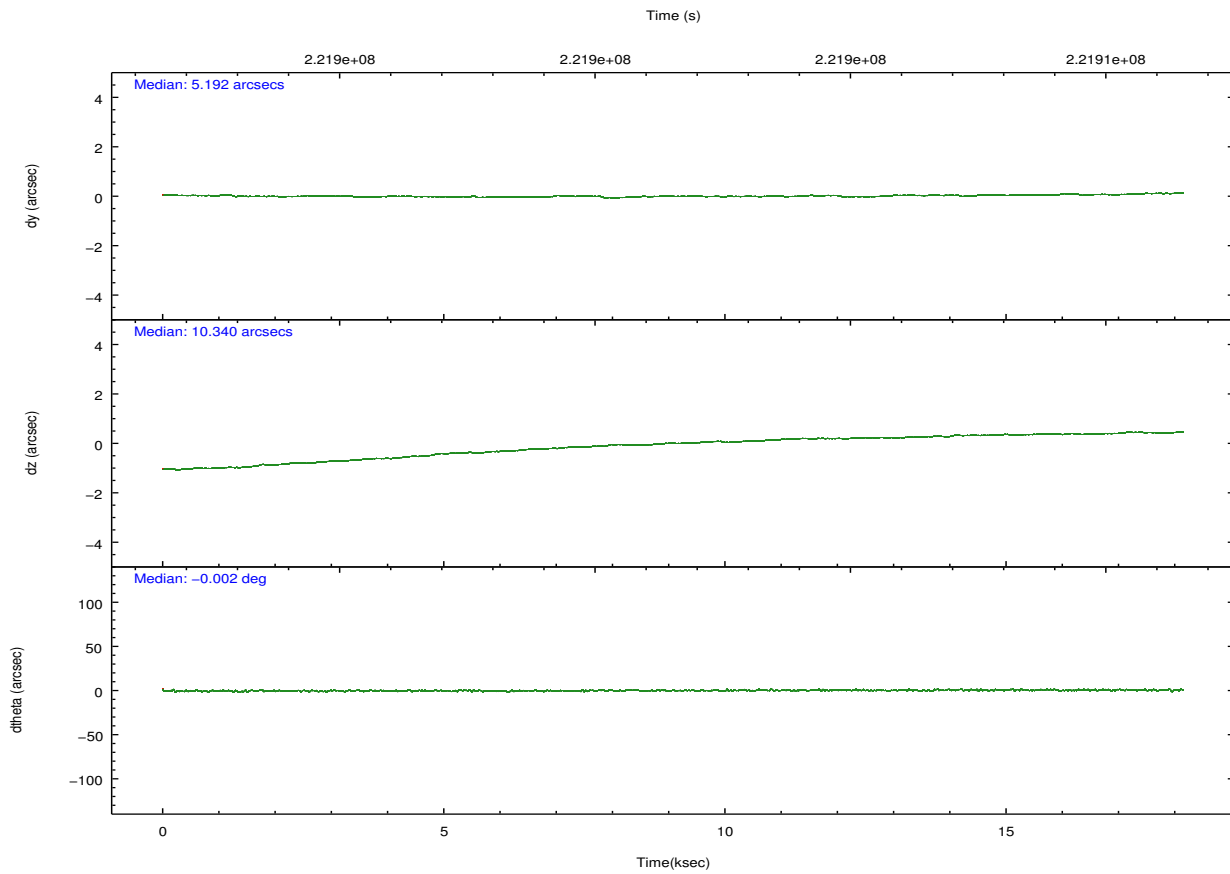
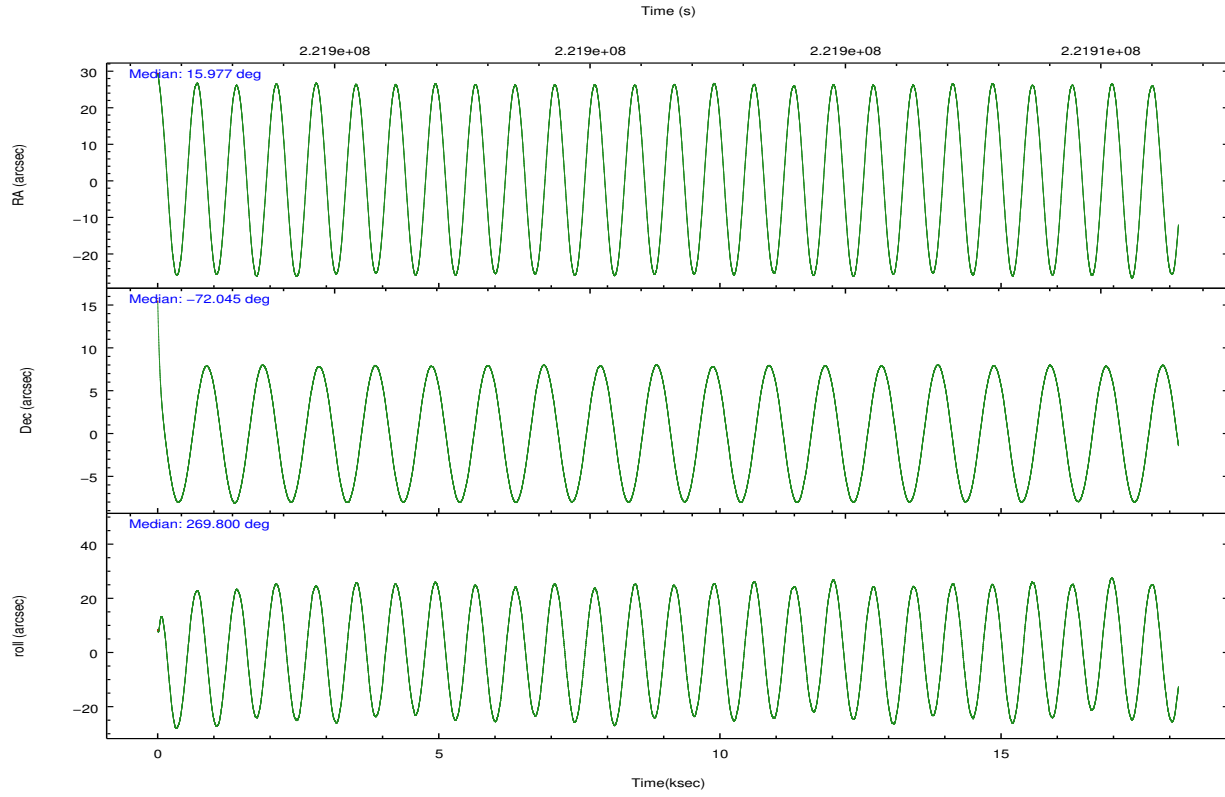
2.1.4 Events

	ccd 0	ccd 1	ccd 2	ccd 3	ccd 6	ccd 7		ccd 0	ccd 1	ccd 2	ccd 3	ccd 6	ccd 7
level 1 events	100693	95129	111254	167863	110915	100223	grade 0 events	4902	4602	5075	57033	4382	4914
rejected events	89075	83785	99846	99196	99803	51937		4%	4%	4%	33%	3%	4%
rejected %	88%	88%	89%	59%	89%	51%	grade 1 events	53	53	61	721	51	121
								0%	0%	0%	0%	0%	0%
							grade 2 events	2596	2446	2493	6092	2394	10440
								2%	2%	2%	3%	2%	10%
							grade 3 events	1255	1292	1169	2085	1171	4832
								1%	1%	1%	1%	1%	4%
							grade 4 events	1150	1232	1166	2032	1245	4729
								1%	1%	1%	1%	1%	4%
							grade 5 events	3099	3387	2966	3809	3691	10899
								3%	3%	2%	2%	3%	10%
							grade 6 events	1957	2139	1741	2093	2158	24526
								1%	2%	1%	1%	1%	24%
							grade 7 events	85681	79978	96583	93998	95823	39762
								85%	84%	86%	55%	86%	39%

2.2 Compared Parameters

Parameter	Planned	Actual	Parameter	Planned	Actual
Instrument	ACIS	ACIS	Obspar format version number	7	7
Detector	ACIS-012367	ACIS-012367	Obspar file type	PREDICTED	ACTUAL
Grating	NONE	NONE	Obspar update status	NONE	UPDATED
Data mode	VFAINT	VFAINT	Number of optional ACIS chips dropped	0	0
Observation mode	POINTING	POINTING	On-chip summing requested	N	N
[deg] Pointing RA	15.932488	15.97684225279802	Subarray requested	NONE	NONE
[deg] Pointing Dec	-72.020863	-72.04457389296664	Alternating exposures requested	N	N
[deg] Pointing Roll	269.554974	269.8058436588543	[s] Primary exposure time	0.000000	3.2
[s] Window start time (MET)	215654464.184000	215654464.184000			
[s] Window stop time (MET)	223516864.184000	223516864.184000			
[mm] SIM focus pos	-0.782348	-0.7809083437167272			
[mm] SIM defocus	0	0.001439871863259334			
[mm] SIM translation stage pos	-233.592463	-233.5874344608287			
[mm] SIM translation stage offset	0	-0.005018542100998502			
[s] Observation start time (MET)	221892604.184000	221891346.44307			
Observation start date	2005-01-12T04:49:00	2005-01-12T04:29:06			
[s] Observation end time (MET)	221910604.184000	221910737.39394			
Observation end date	2005-01-12T09:49:00	2005-01-12T09:52:17			
Read mode	TIMED	TIMED			

2.3 Aspect

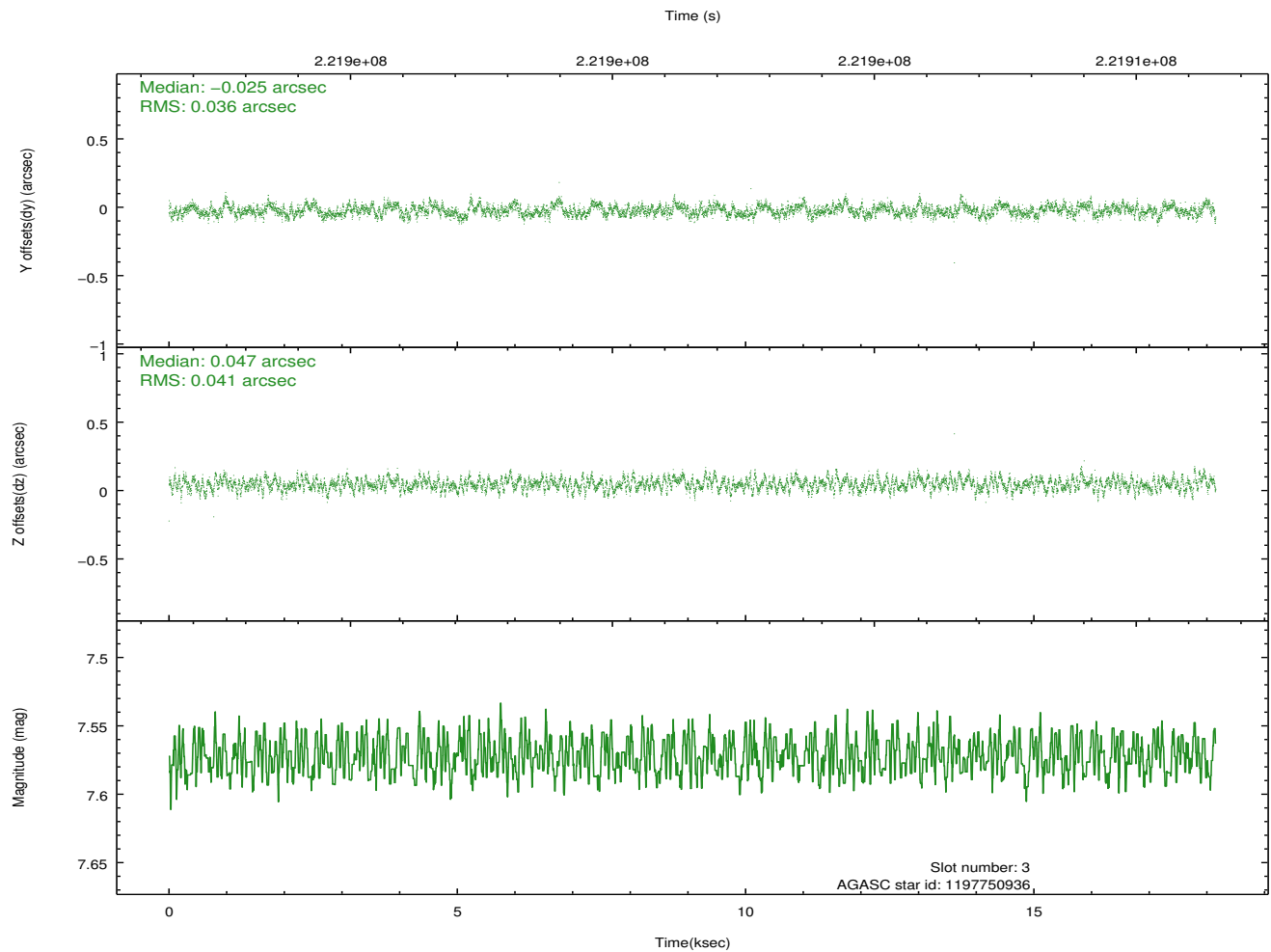
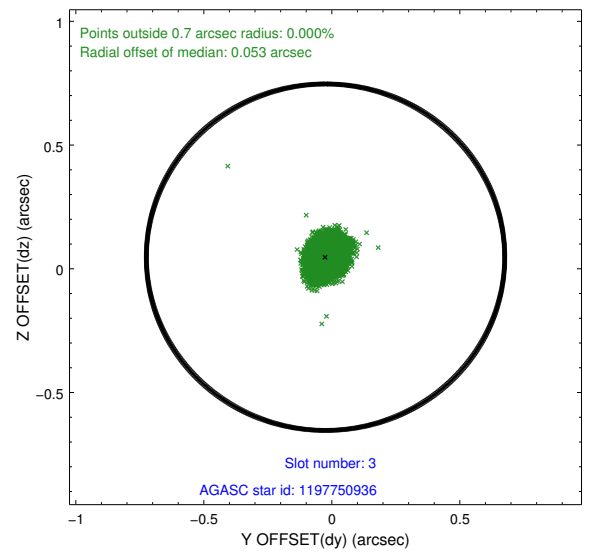
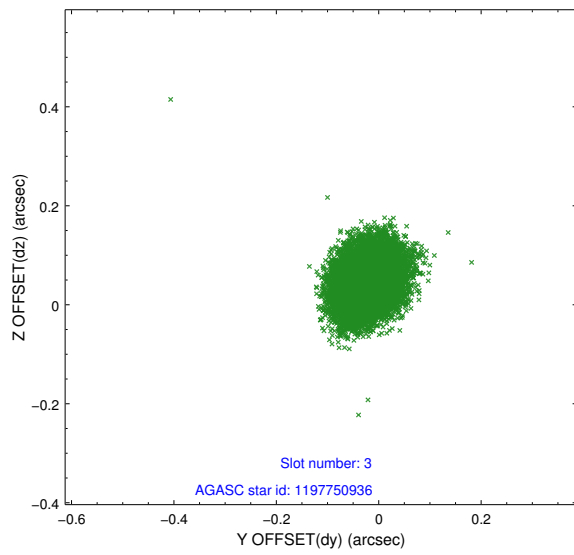


Slot Statistics

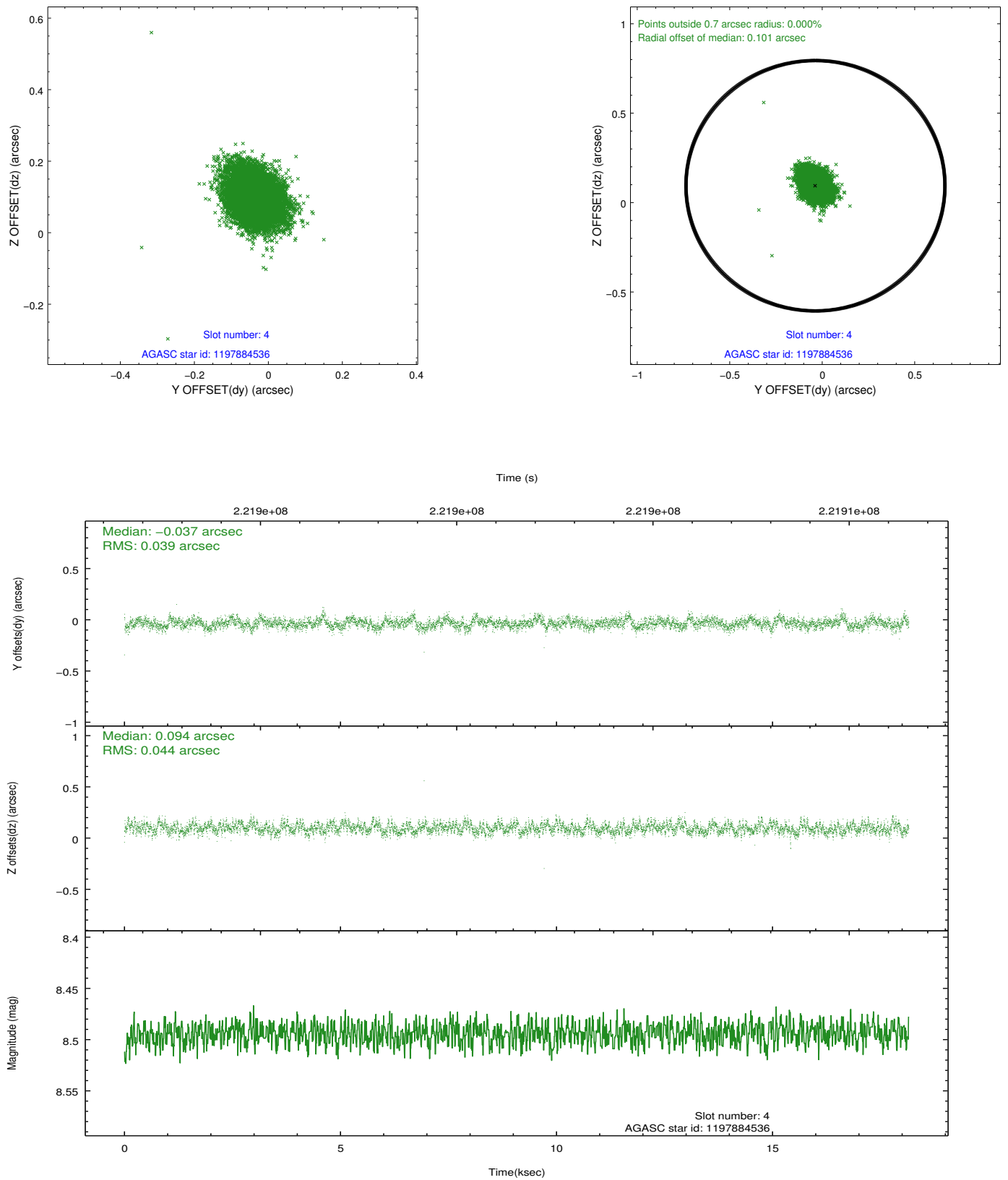
slot	status	id	mag	n_pts	med_dy	med_dz	dr1	dr2	ra	dec	mean_y	mean_z
0	FID	ACIS-I-1	7.24	4429	0.003	-0.019	0.033	0.059	0.000000	0.000000	934.53	-833.69
1	FID	ACIS-I-4	7.18	4429	0.080	0.035	0.024	0.043	0.000000	0.000000	2154.78	1066.05
2	FID	ACIS-I-5	7.22	4429	-0.182	0.055	0.016	0.027	0.000000	0.000000	-1813.37	1064.16
3	GUIDE	1197750936	7.57	8856	-0.025	0.047	0.058	0.092	15.387940	-71.549550	-1688.54	-633.44
4	GUIDE	1197884536	8.49	8856	-0.037	0.094	0.062	0.100	17.160729	-71.835289	-664.80	1373.40
5	GUIDE	1197884712	8.30	8854	0.105	-0.049	0.067	0.102	16.087398	-72.252690	833.76	176.87
6	GUIDE	1197885328	7.23	8857	-0.011	-0.090	0.064	0.097	16.283090	-71.733943	-1034.73	388.12
7	GUIDE	1197885104	9.38	8850	-0.025	-0.007	0.134	0.199	17.845067	-72.189368	623.95	2110.67

2.4 Star Slots

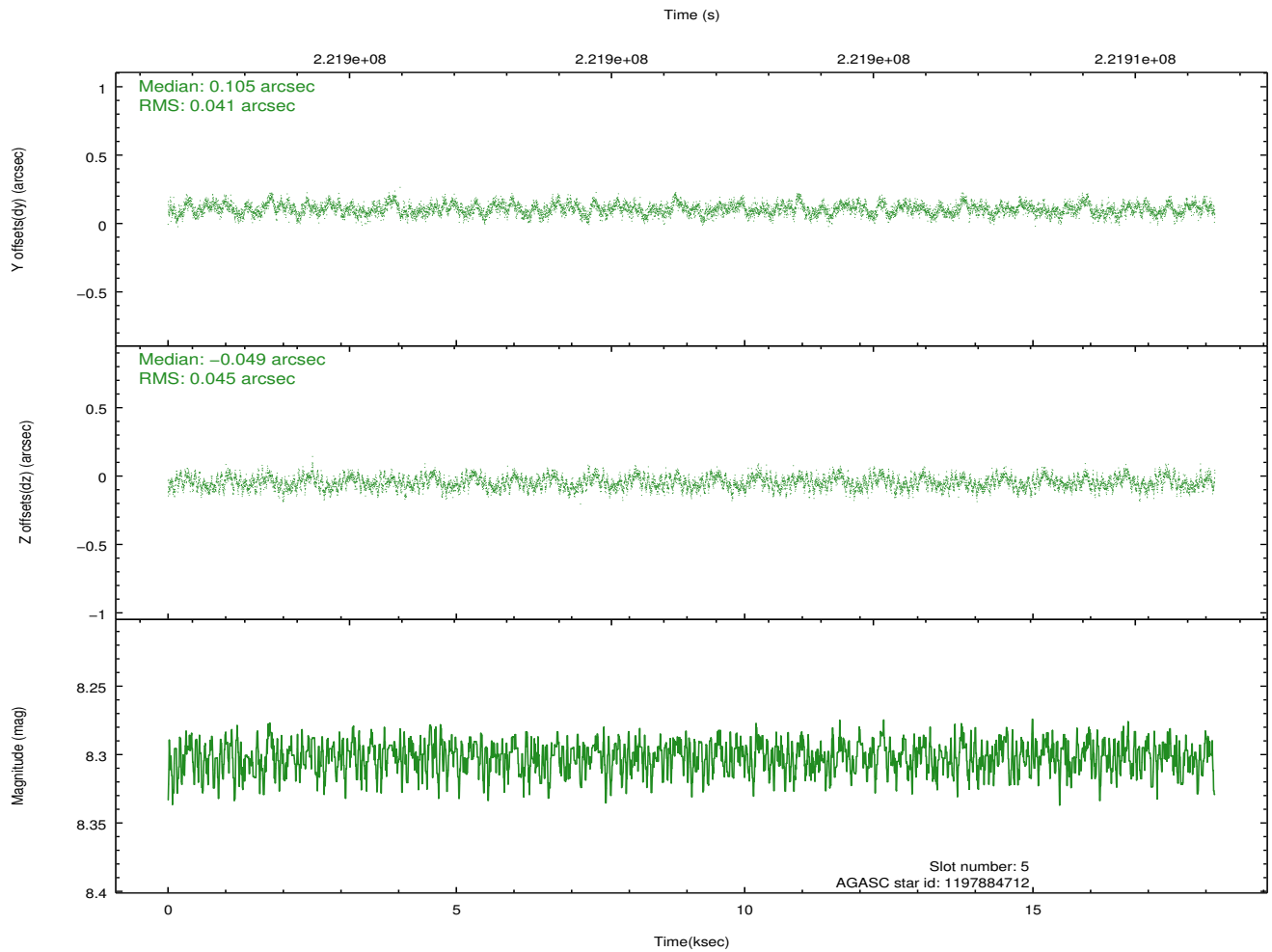
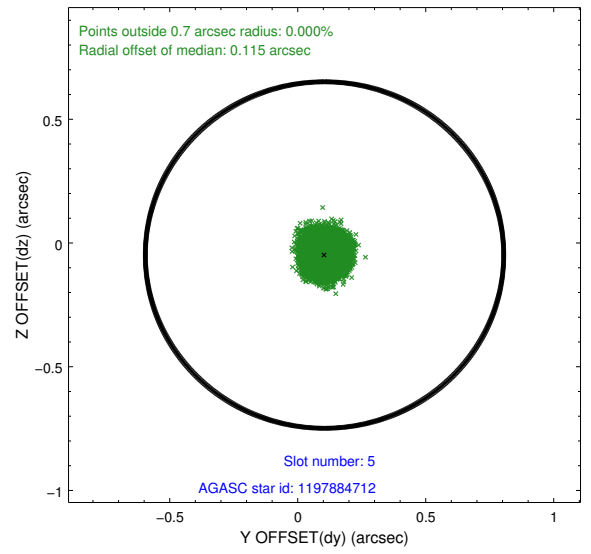
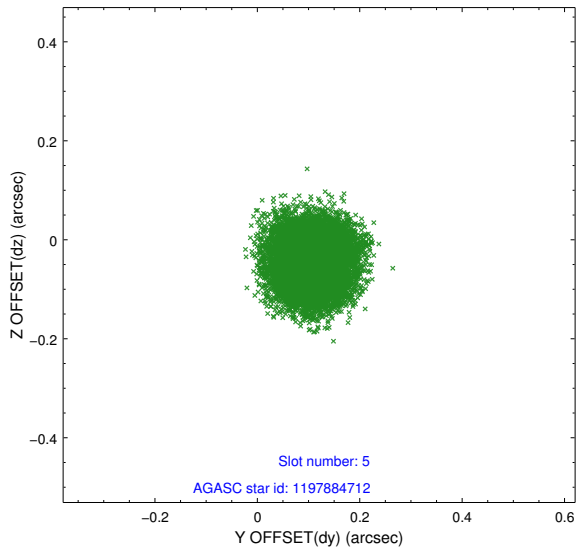
2.4.1 Slot 3



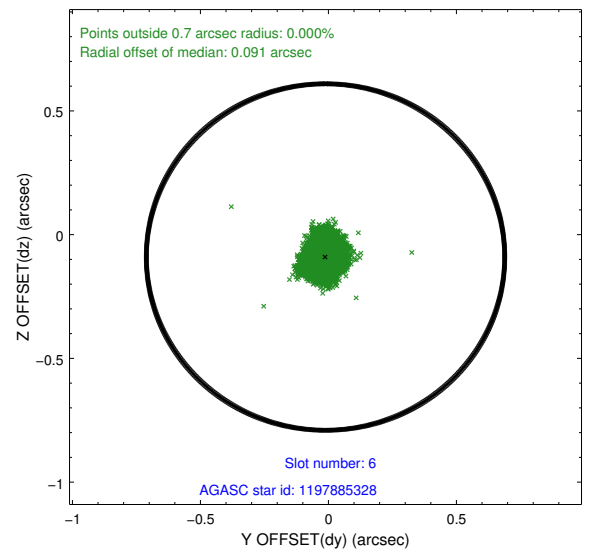
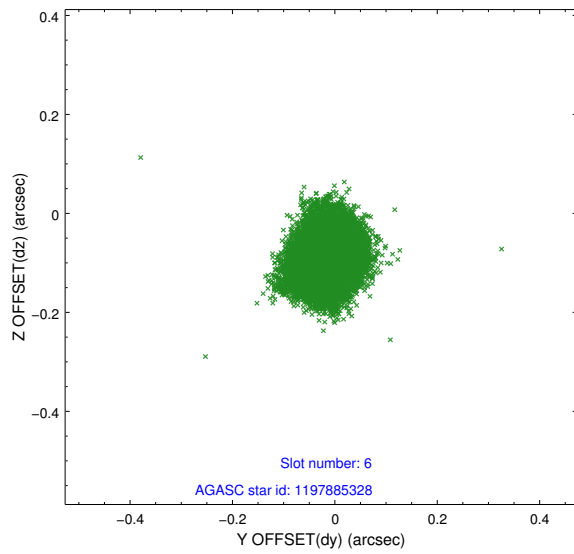
2.4.2 Slot 4



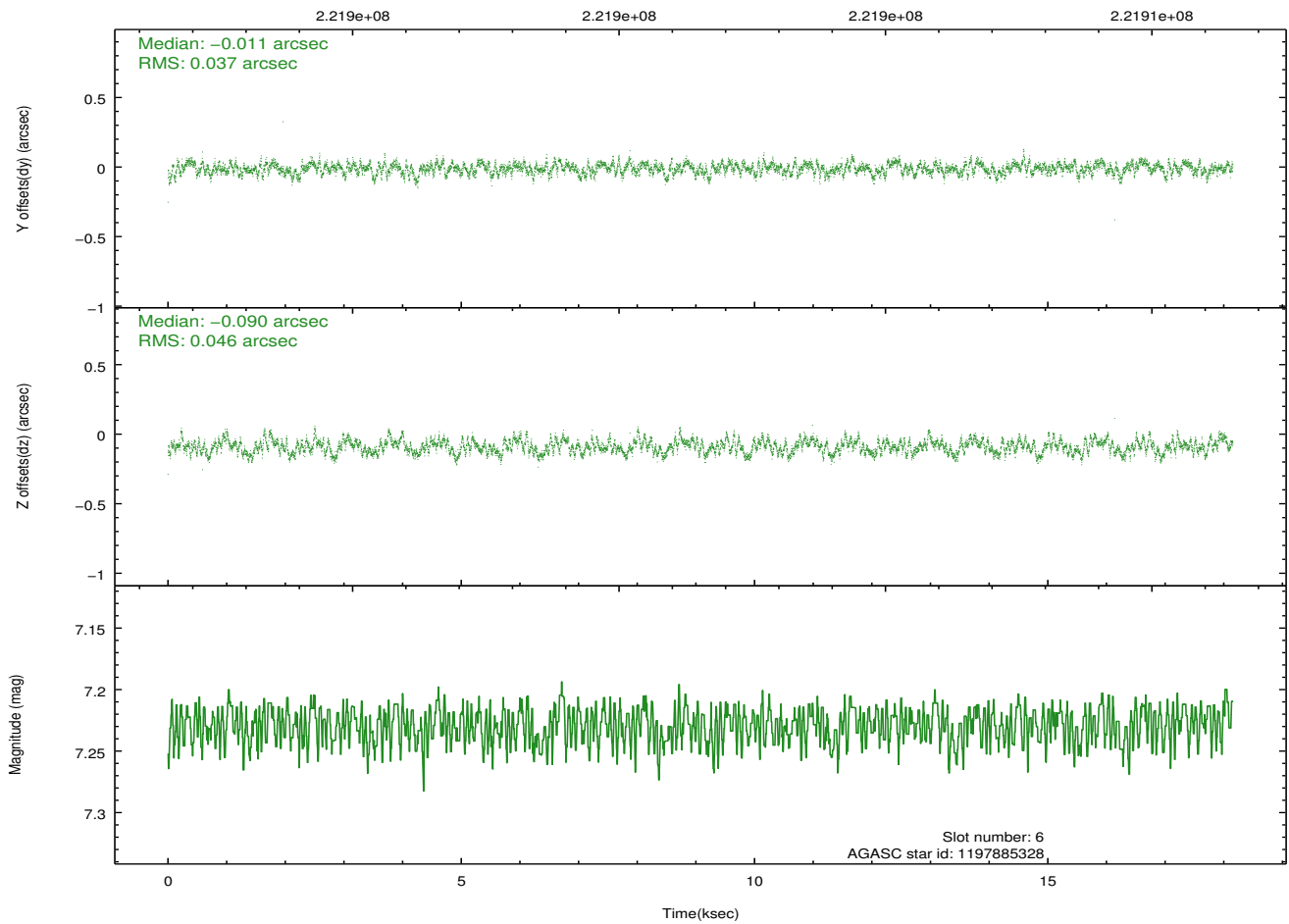
2.4.3 Slot 5



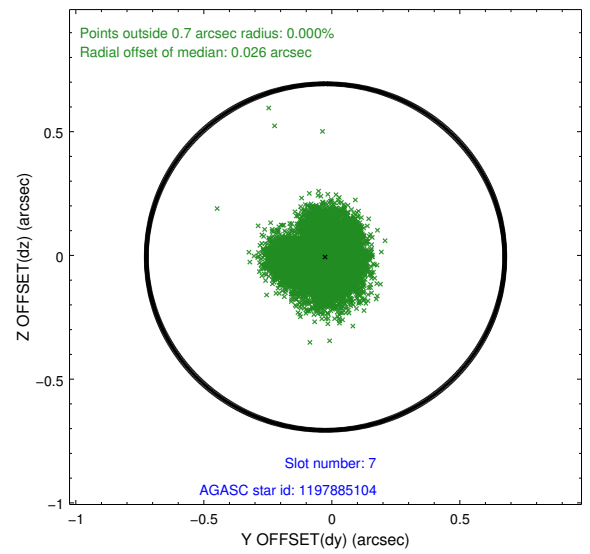
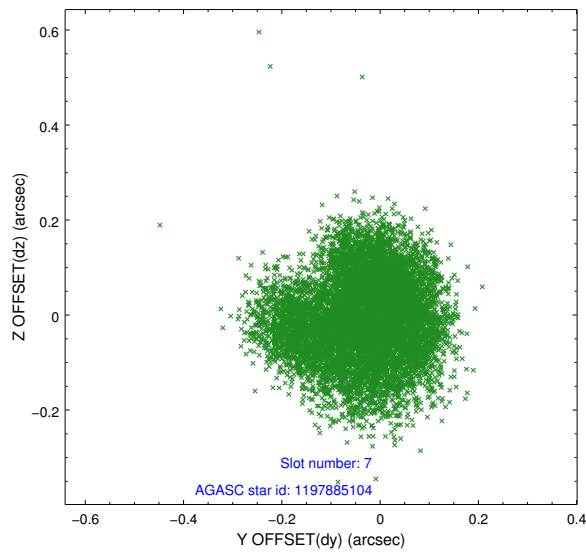
2.4.4 Slot 6



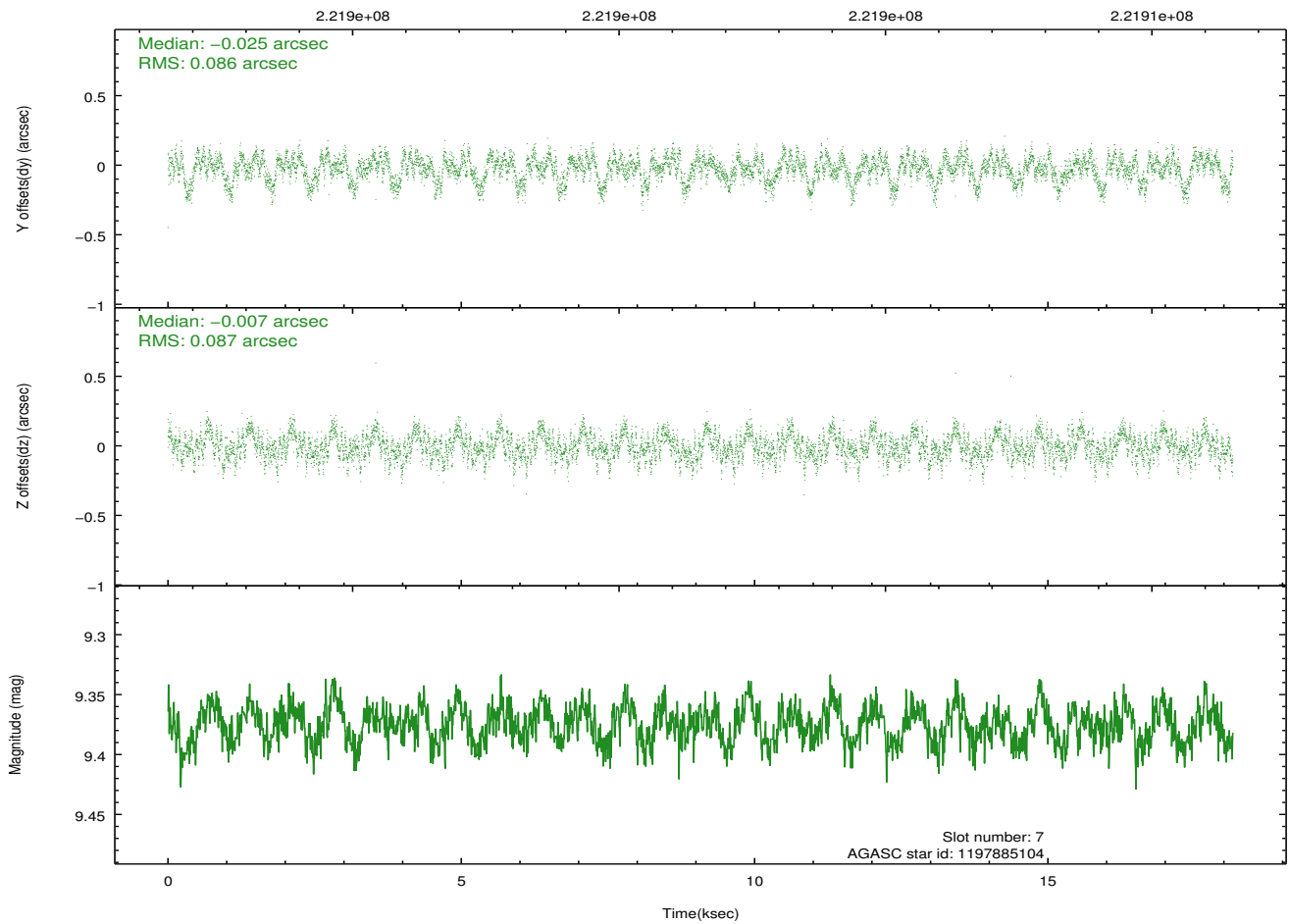
Time (s)



2.4.5 Slot 7

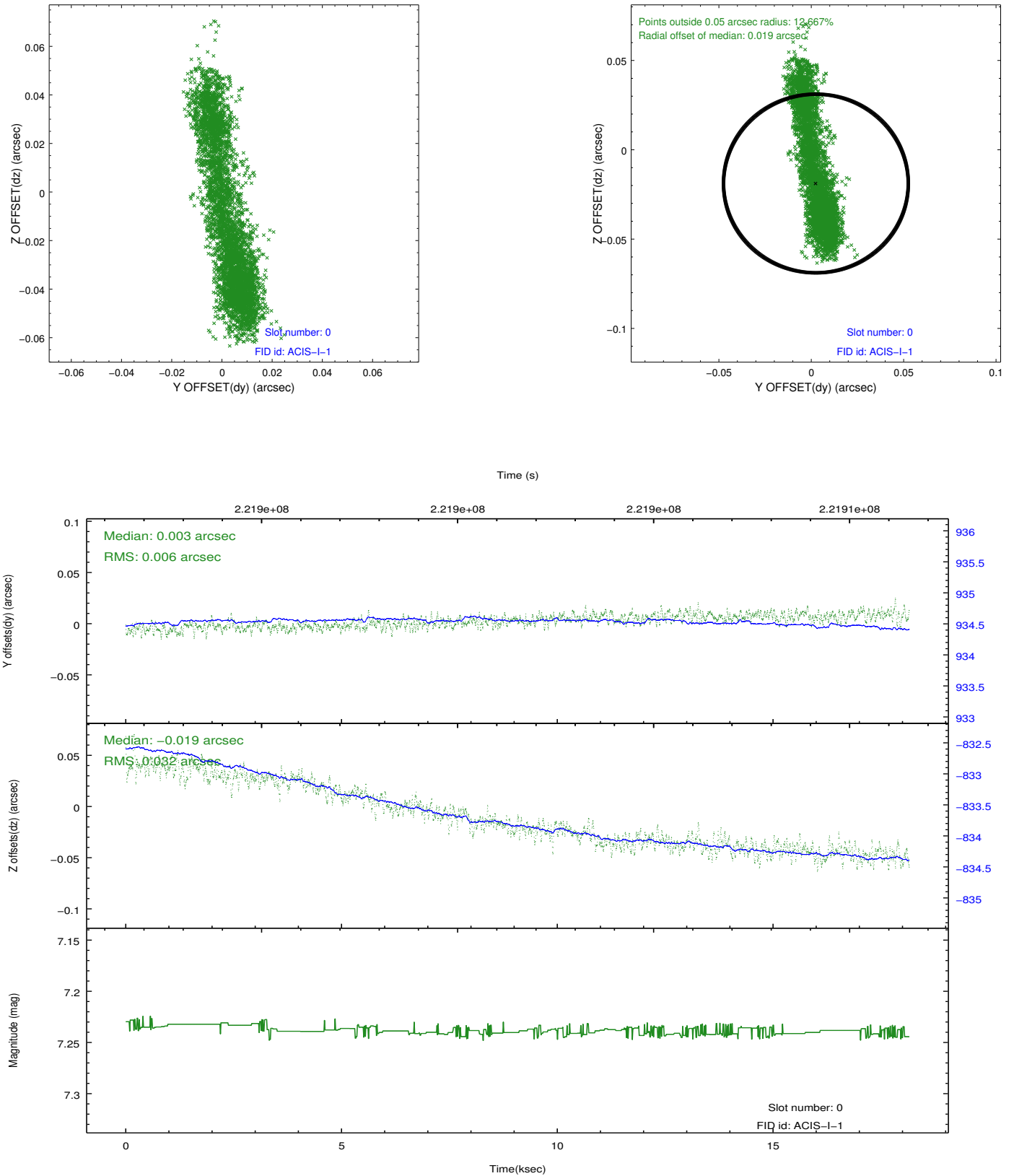


Time (s)

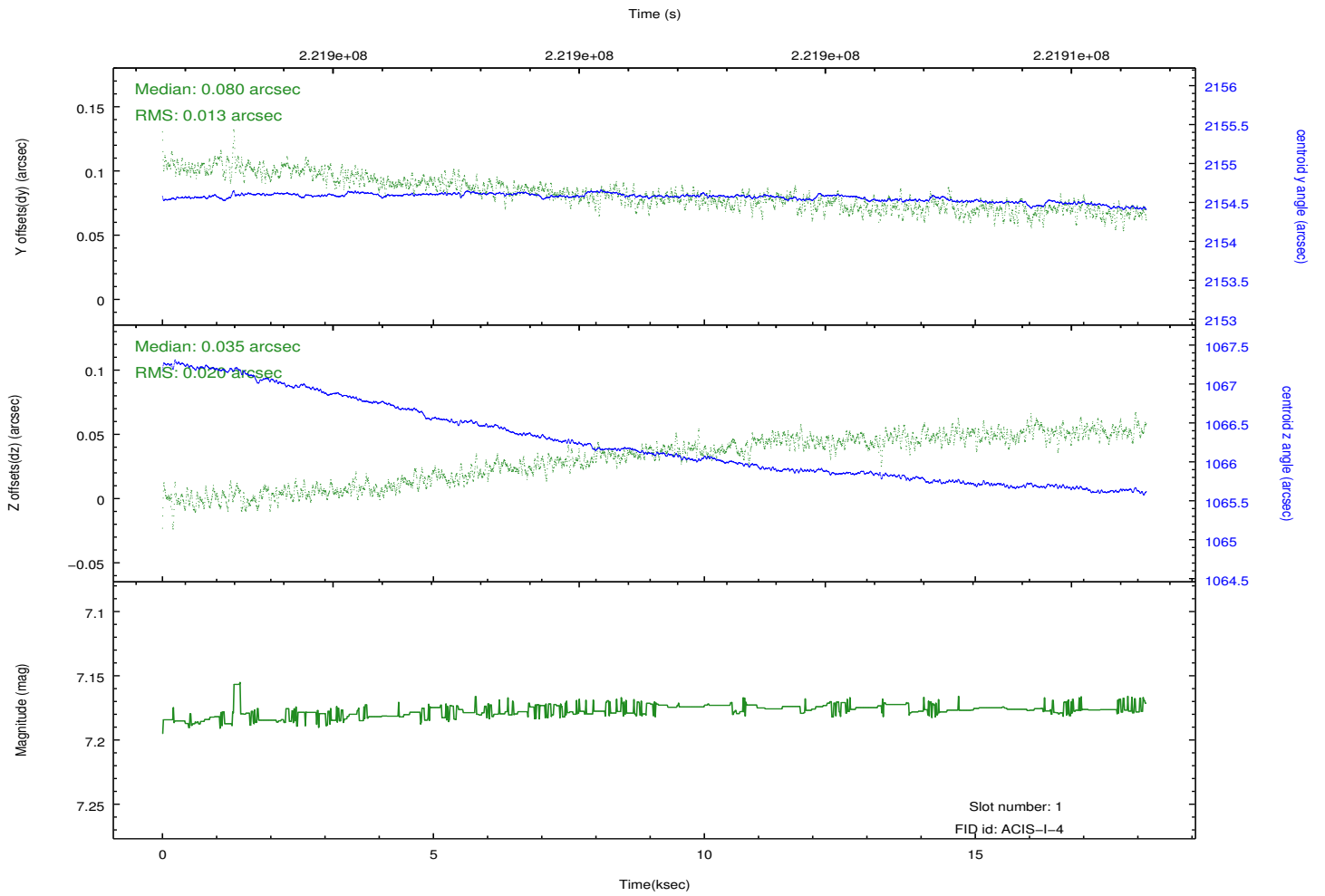
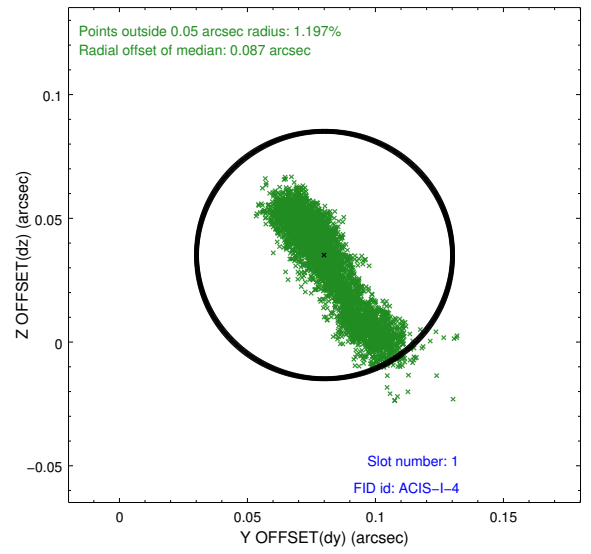
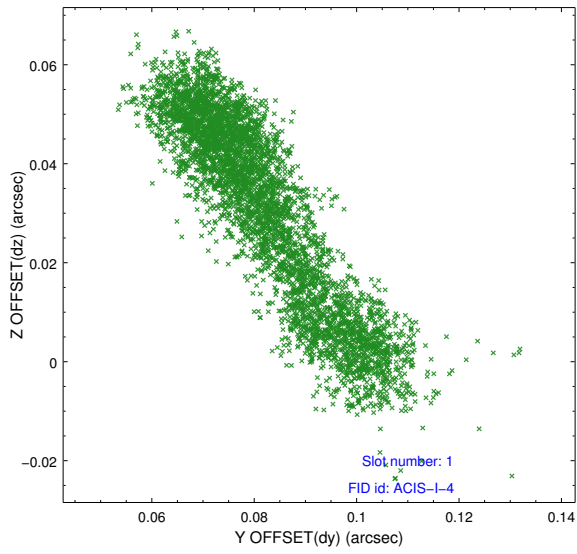


2.5 FID Slots

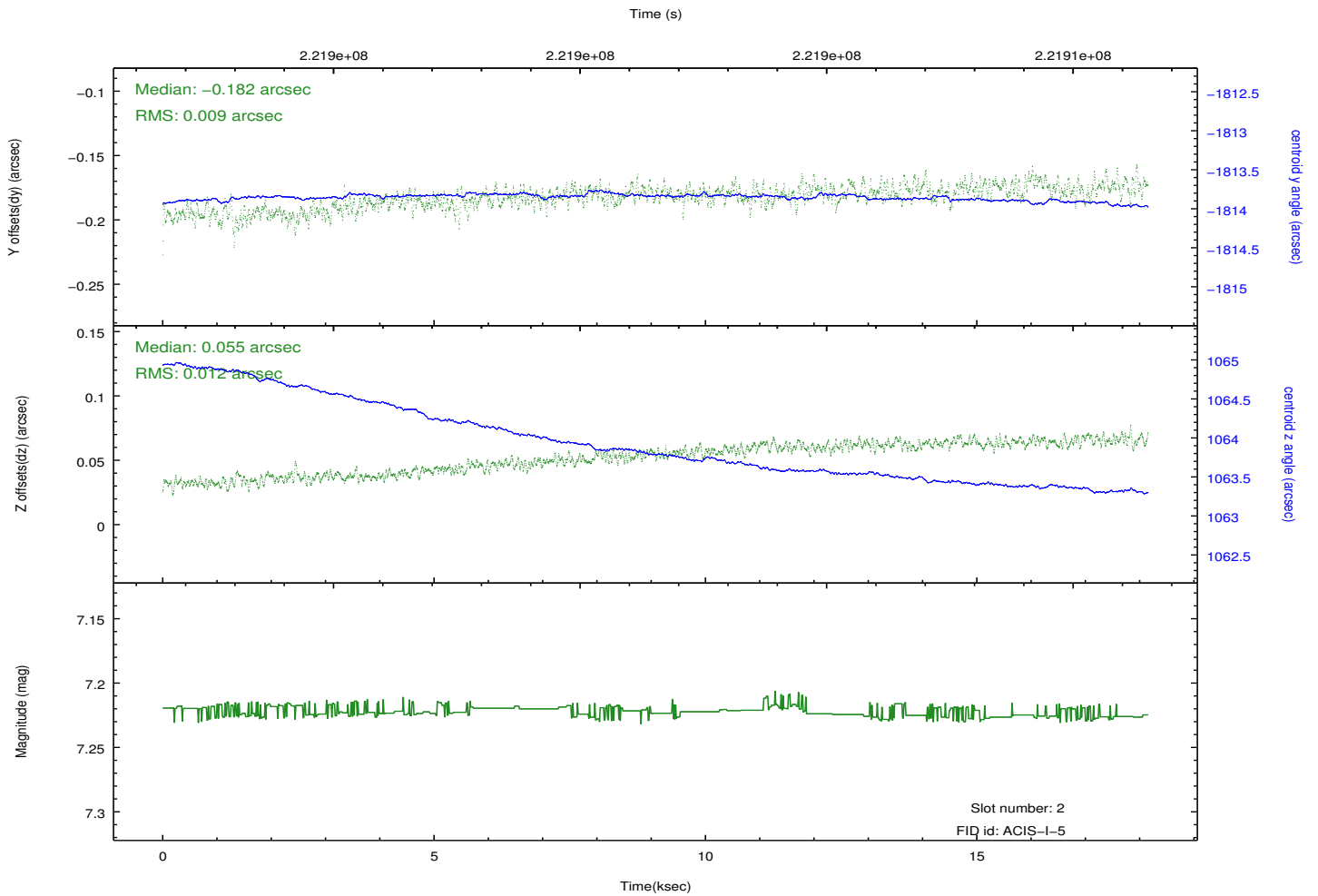
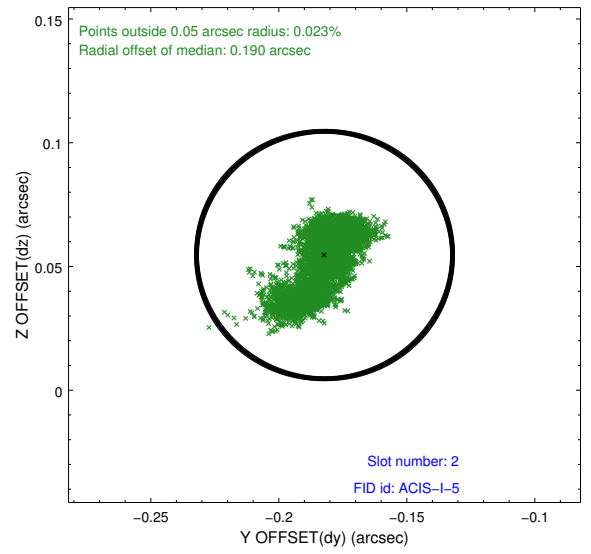
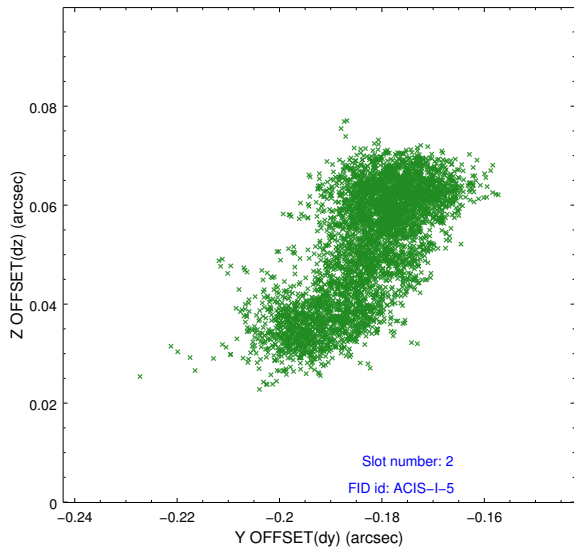
2.5.1 Slot 0



2.5.2 Slot 1



2.5.3 Slot 2



A Summary

A.1 Status

V&V Scientist	Jen Lauer
V&V Date (YYYY-MM-DD)	2013.01.08
V&V Edition	1
V&V Disposition and Status	OK
V&V Charge Time	18.15039

A.2 Comments

Window constraint met.