

# V&V Reference Report

## L2 ASCDS Version : 8.4.5

Observation 60871 - L2 Version 3  
Chandra X-Ray Center

L2 Processing Date : Oct 21 2012

## Contents

<b>1</b>	<b>Front</b>	<b>2</b>
<b>2</b>	<b>OBI</b>	<b>3</b>
2.1	OBI . . . . .	3
2.1.1	Images . . . . .	3
2.1.2	Bias . . . . .	3
2.1.3	Parameters . . . . .	4
2.1.4	Events . . . . .	4
2.2	Compared Parameters . . . . .	5
2.3	Star Slots . . . . .	6
2.4	FID Slots . . . . .	6
<b>A</b>	<b>Summary</b>	<b>7</b>
A.1	Status . . . . .	7
A.2	Comments . . . . .	7

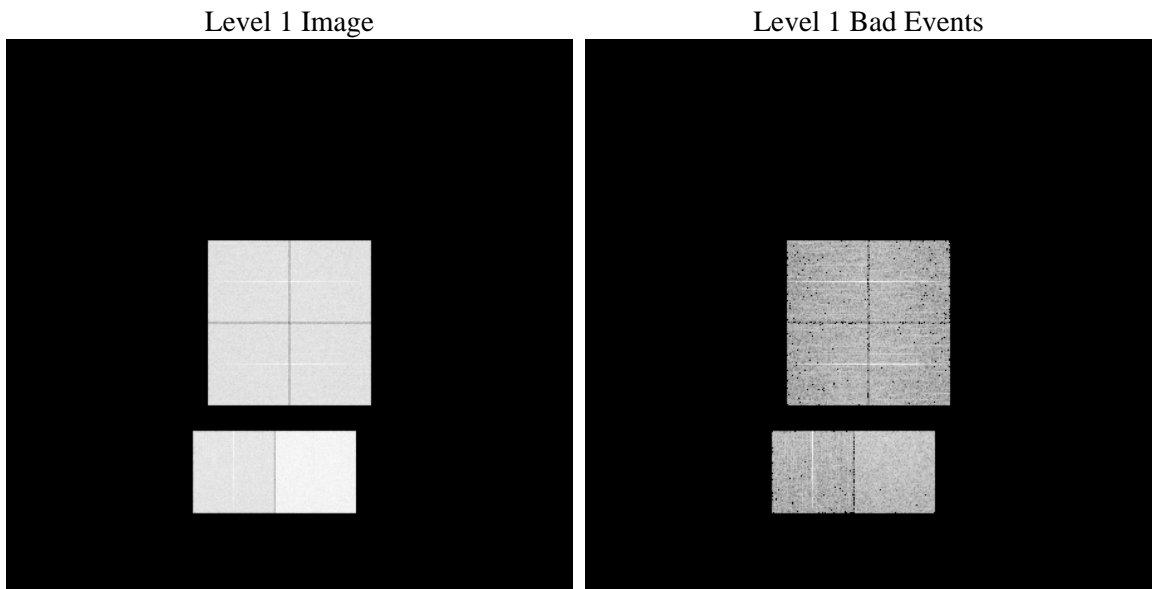
# 1 Front

seq_num	&#160	Sequence number
obs_id	60871	Observation id
title	ACIS-012367 diagnostics	Proposal title
observer	CHANDRA engineering request/realtime commanding	Principal investig
object	&#160	Source name
dtycle	0	&#160
cycle	P	events from which exps? Prim/Second/Both
ra_targ	0.0	Observer's specified target RA [deg]
dec_targ	0.0	Observer's specified target Dec [deg]
ra_nom	270.59883189951	Nominal RA [deg]
dec_nom	66.759926903434	Nominal Dec [deg]
roll_nom	35.430504149042	Nominal Roll [deg]
revision	3	Processing version of data
ontime	8467.1085303426	Sum of GTIs [s]
livetime	8359.8929038507	Livetime [s]
ontime0	4524.4727774858	Sum of GTIs [s]
ontime1	4543.9186474383	Sum of GTIs [s]
ontime2	4385.1112658381	Sum of GTIs [s]
ontime3	4396.4912724793	Sum of GTIs [s]
ontime6	4846.7832179964	Sum of GTIs [s]
ontime7	8467.1085303426	Sum of GTIs [s]
l2events	1294574	Number of level 2 events

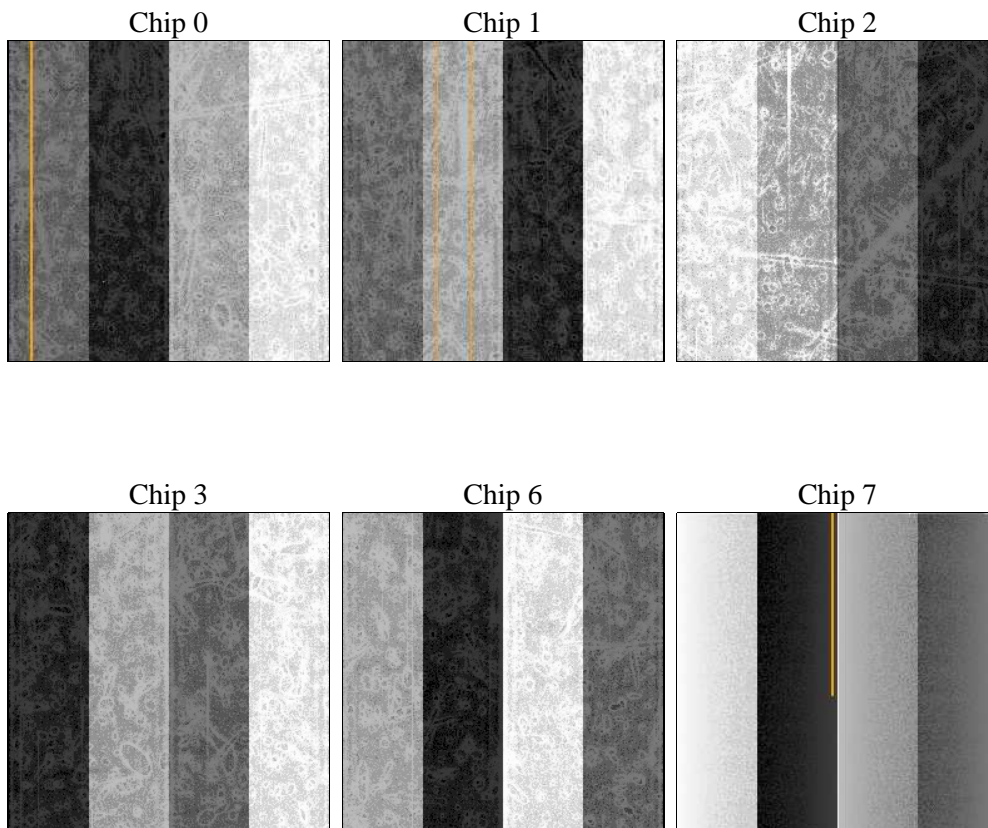
## 2 OBI

### 2.1 OBI

#### 2.1.1 Images



#### 2.1.2 Bias



### 2.1.3 Parameters

obi_num	0	Obi number	sched_exp_time	0.0	[s] Scheduled observation exposure time
ascdsver	8.4.5	Processing system revision	ontime	8467.1085303426	Sum of GTIs [s]
caldbver	4.5.2	&#160	ontime0	4524.4727774858	Sum of GTIs [s]
date	2012-10-21T09:54:16	Date and time of file creation	ontime1	4543.9186474383	Sum of GTIs [s]
revision	3	Processing version of data	ontime2	4385.1112658381	Sum of GTIs [s]
			ontime3	4396.4912724793	Sum of GTIs [s]
			ontime6	4846.7832179964	Sum of GTIs [s]
			ontime7	8467.1085303426	Sum of GTIs [s]
			l1events	1548049	Number of level 1 events

### 2.1.4 Events

	ccd 0	ccd 1	ccd 2	ccd 3	ccd 6	ccd 7		ccd 0	ccd 1	ccd 2	ccd 3	ccd 6	ccd 7
level 1 events	219937	222066	217378	219330	247917	421421	grade 0 events	105730	106128	105943	106370	117697	94583
rejected events	28700	29229	29141	31135	32140	44349		48%	47%	48%	48%	47%	22%
rejected %	13%	13%	13%	14%	12%	10%	grade 1 events	562	504	623	603	569	252
								0%	0%	0%	0%	0%	0%
							grade 2 events	33403	34080	31919	31942	37418	84015
								15%	15%	14%	14%	15%	19%
							grade 3 events	12498	12288	12099	12130	13253	38149
								5%	5%	5%	5%	5%	9%
							grade 4 events	12274	12331	12231	12140	13257	37816
								5%	5%	5%	5%	5%	8%
							grade 5 events	1943	2003	1956	2062	2291	8628
								0%	0%	0%	0%	0%	2%
							grade 6 events	27332	28010	26045	25613	34282	122645
								12%	12%	11%	11%	13%	29%
							grade 7 events	26195	26722	26562	28470	29150	35333
								11%	12%	12%	12%	11%	8%

## 2.2 Compared Parameters

Parameter	Planned	Actual	Parameter	Planned	Actual
Instrument	ACIS	ACIS	Obspar format version number	7	7
Detector	ACIS-012367	ACIS-012367	Obspar file type	PREDICTED	ACTUAL
Grating	NONE	NONE	Obspar update status	NONE	UPDATED
Data mode	FAINT	FAINT	On-chip summing requested	N	N
Observation mode	SECONDARY	SECONDARY	Subarray requested	NONE	NONE
[deg] Pointing RA	0	270.5988318995061	Alternating exposures requested	N	N
[deg] Pointing Dec	0	66.75992690343446	[s] Primary exposure time	0.000000	3.2
[deg] Pointing Roll	0.0	35.4305041490417			
[mm] SIM focus pos	-0.782348	-0.7809083437167272			
[mm] SIM defocus	0	0.7524282956875696			
[mm] SIM translation stage pos	-233.592463	250.466033080201			
[mm] SIM translation stage offset	0	-0.01005468664627074			
[s] Observation start time (MET)	159953461.183492	159953460.15879			
Observation start date	2003-01-26T07:31:01	2003-01-26T07:31:00			
[s] Observation end time (MET)	159972179.734276	159972178.70957			
Observation end date	2003-01-26T12:43:00	2003-01-26T12:42:58			
Read mode	TIMED	TIMED			

**2.3 Star Slots**

**2.4 FID Slots**

# A Summary

## A.1 Status

V&V Scientist	Beth Sundheim
V&V Date (YYYY-MM-DD)	2012.11.27
V&V Edition	1
V&V Disposition and Status	OK
V&V Charge Time	8.4671085303426

## A.2 Comments