

V&V Reference Report

L2 ASCDS Version : 8.5.1.1

Observation 6131 - L2 Version 3
Chandra X-Ray Center

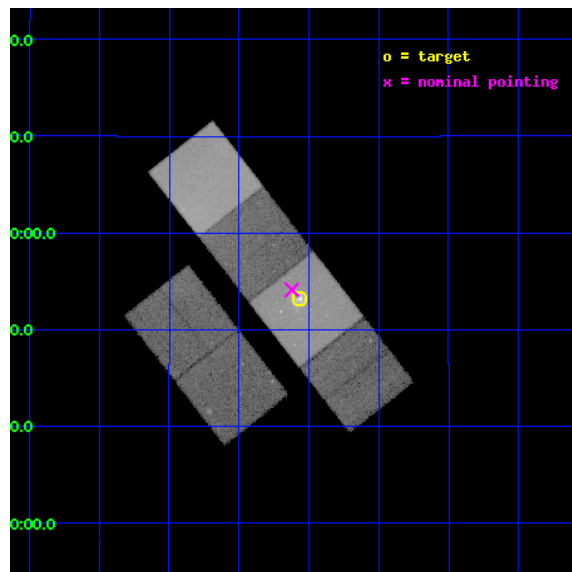
L2 Processing Date : Dec 31 2012

Contents

1	Front	2
2	OBI	3
2.1	OBI	3
2.1.1	Images	3
2.1.2	Bias	3
2.1.3	Parameters	4
2.1.4	Events	4
2.2	Compared Parameters	5
2.3	Aspect	6
2.4	Star Slots	9
2.4.1	Slot 3	9
2.4.2	Slot 4	10
2.4.3	Slot 5	11
2.4.4	Slot 6	12
2.4.5	Slot 7	13
2.5	FID Slots	14
2.5.1	Slot 0	14
2.5.2	Slot 1	15
2.5.3	Slot 2	16
A	Summary	17
A.1	Status	17
A.2	Comments	17

1 Front

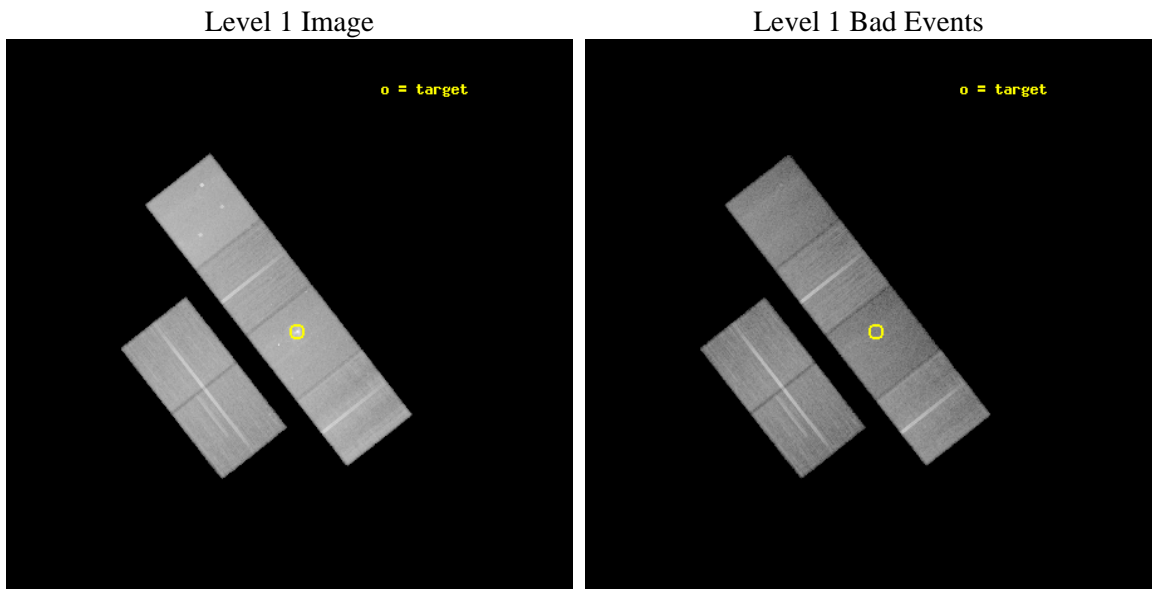
seq_num	600427	Sequence number
obs_id	6131	Observation id
title	The Exploding Galaxies M84 and M89	Proposal title
observer	Dr. Christine Jones	Principal investigator
object	M84	Source name
dtcycle	0	
cycle	P	events from which exps? Prim/Second/Both
ra_targ	186.265833	Observer's specified target RA [deg]
dec_targ	12.886944	Observer's specified target Dec [deg]
ra_nom	186.28029574748	Nominal RA [deg]
dec_nom	12.902179852245	Nominal Dec [deg]
roll_nom	51.956630797683	Nominal Roll [deg]
revision	3	Processing version of data
ontime	41452.799845576	Sum of GTIs [s]
livetime	40927.899534052	Livetime [s]
ontime2	41452.799845576	Sum of GTIs [s]
ontime3	41446.317924947	Sum of GTIs [s]
ontime5	41452.799845576	Sum of GTIs [s]
ontime6	41452.799845576	Sum of GTIs [s]
ontime7	41452.799845576	Sum of GTIs [s]
ontime8	41449.558885276	Sum of GTIs [s]
l2events	498709	Number of level 2 events



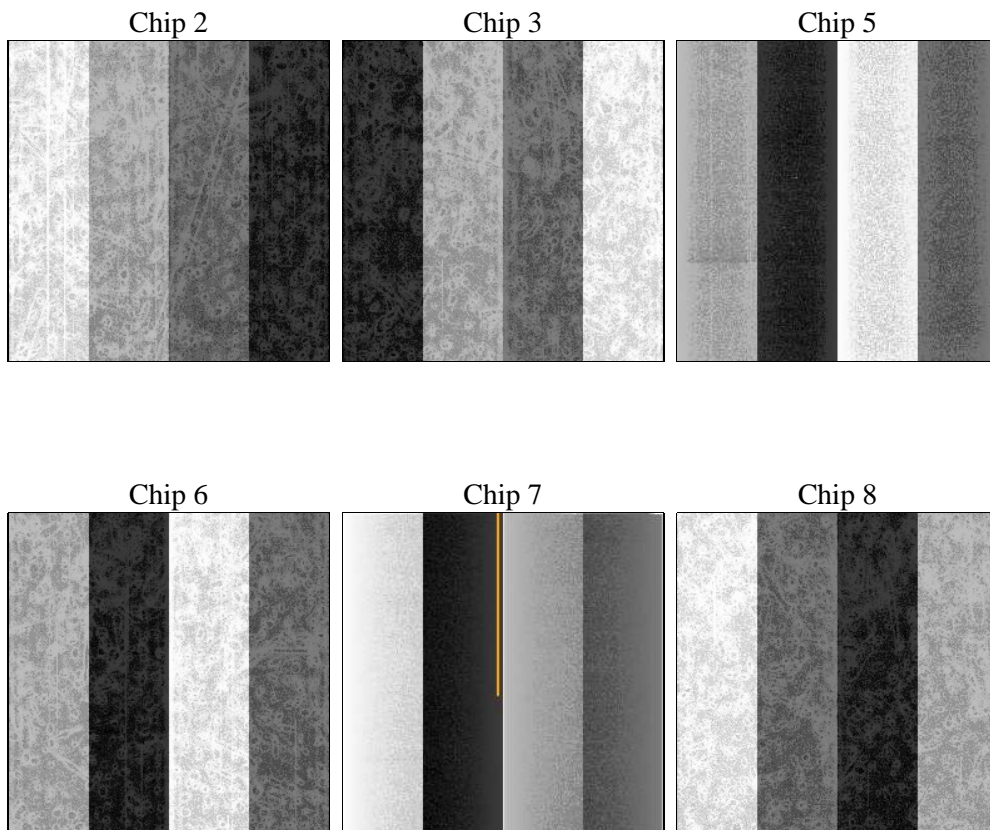
2 OBI

2.1 OBI

2.1.1 Images



2.1.2 Bias



2.1.3 Parameters

obi_num	0	Obi number	sched_exp_time	41500.000000	[s] Scheduled observation exposure time
ascdsver	8.5.1.1	Processing system revision	ontime	41452.799845576	Sum of GTIs [s]
caldbver	4.5.5	 	ontime2	41452.799845576	Sum of GTIs [s]
date	2012-12-31T12:54:01	Date and time of file creation	ontime3	41446.317924947	Sum of GTIs [s]
revision	3	Processing version of data	ontime5	41452.799845576	Sum of GTIs [s]
			ontime6	41452.799845576	Sum of GTIs [s]
			ontime7	41452.799845576	Sum of GTIs [s]
			ontime8	41449.558885276	Sum of GTIs [s]
			l1events	1940894	Number of level 1 events

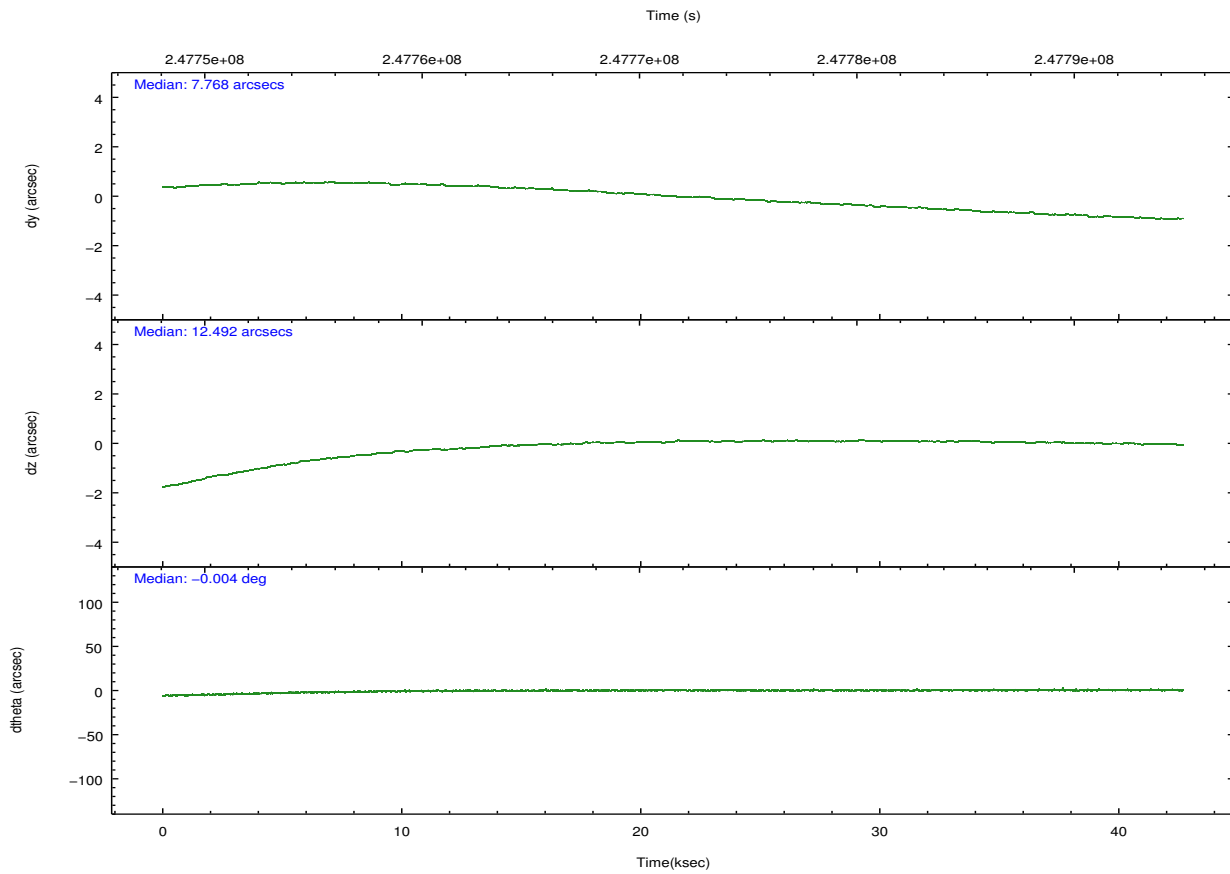
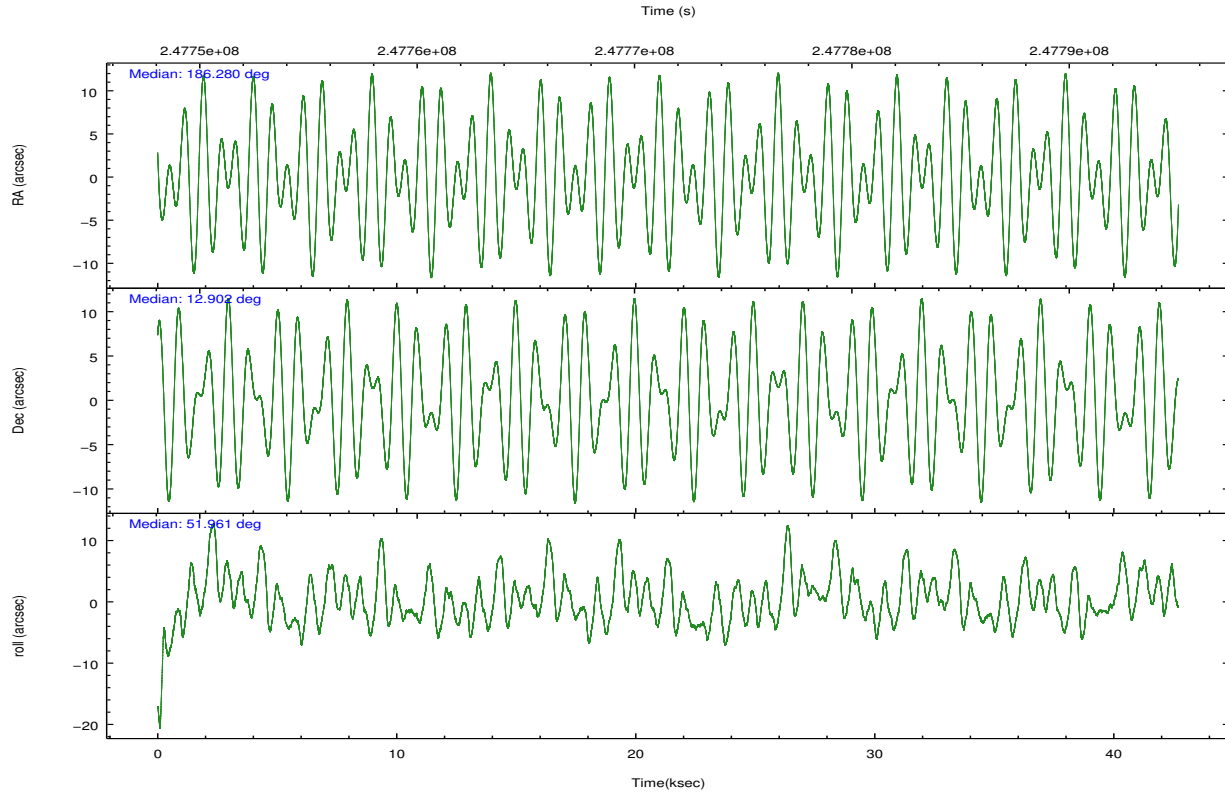
2.1.4 Events

	ccd 2	ccd 3	ccd 5	ccd 6	ccd 7	ccd 8		ccd 2	ccd 3	ccd 5	ccd 6	ccd 7	ccd 8
level 1 events	307302	272133	395224	289250	335513	341472	grade 0 events	20765	14965	28730	23828	23085	27009
rejected events	267632	239793	185815	245166	165849	258362		6%	5%	7%	8%	6%	7%
rejected %	87%	88%	47%	84%	49%	75%	grade 1 events	197	170	519	174	246	266
								0%	0%	0%	0%	0%	0%
							grade 2 events	7521	6033	60437	7407	36157	18419
								2%	2%	15%	2%	10%	5%
							grade 3 events	3279	3137	11217	3411	16459	8705
								1%	1%	2%	1%	4%	2%
							grade 4 events	3252	3072	10680	3341	16578	8060
								1%	1%	2%	1%	4%	2%
							grade 5 events	8913	10738	30806	10944	32714	15474
								2%	3%	7%	3%	9%	4%
							grade 6 events	4854	5135	98361	6100	77394	20928
								1%	1%	24%	2%	23%	6%
							grade 7 events	258521	228883	154474	234045	132880	242611
								84%	84%	39%	80%	39%	71%

2.2 Compared Parameters

Parameter	Planned	Actual	Parameter	Planned	Actual
Instrument	ACIS	ACIS	Obspar format version number	7	7
Detector	ACIS-235678	ACIS-235678	Obspar file type	PREDICTED	ACTUAL
Grating	NONE	NONE	Obspar update status	NONE	UPDATED
Data mode	VFAINT	VFAINT	Number of optional ACIS chips dropped	0	0
Observation mode	POINTING	POINTING	On-chip summing requested	N	N
[deg] Pointing RA	186.276775	186.280295747478	Subarray requested	NONE	NONE
[deg] Pointing Dec	12.875164	12.90217985224517	Alternating exposures requested	N	N
[deg] Pointing Roll	51.800785	51.95663079768345	[s] Primary exposure time	0.000000	3.2
[mm] SIM focus pos	-0.684267	-0.6828225247311905			
[mm] SIM defocus	0	0.001444936568705701			
[mm] SIM translation stage pos	-190.132523	-190.1400660498719			
[mm] SIM translation stage offset	0	0.00754346686406393			
[s] Observation start time (MET)	247751397.184000	247749922.57316			
Observation start date	2005-11-07T11:48:53	2005-11-07T11:25:22			
[s] Observation end time (MET)	247792897.184000	247793921.21269			
Observation end date	2005-11-07T23:20:33	2005-11-07T23:38:41			
Read mode	TIMED	TIMED			

2.3 Aspect

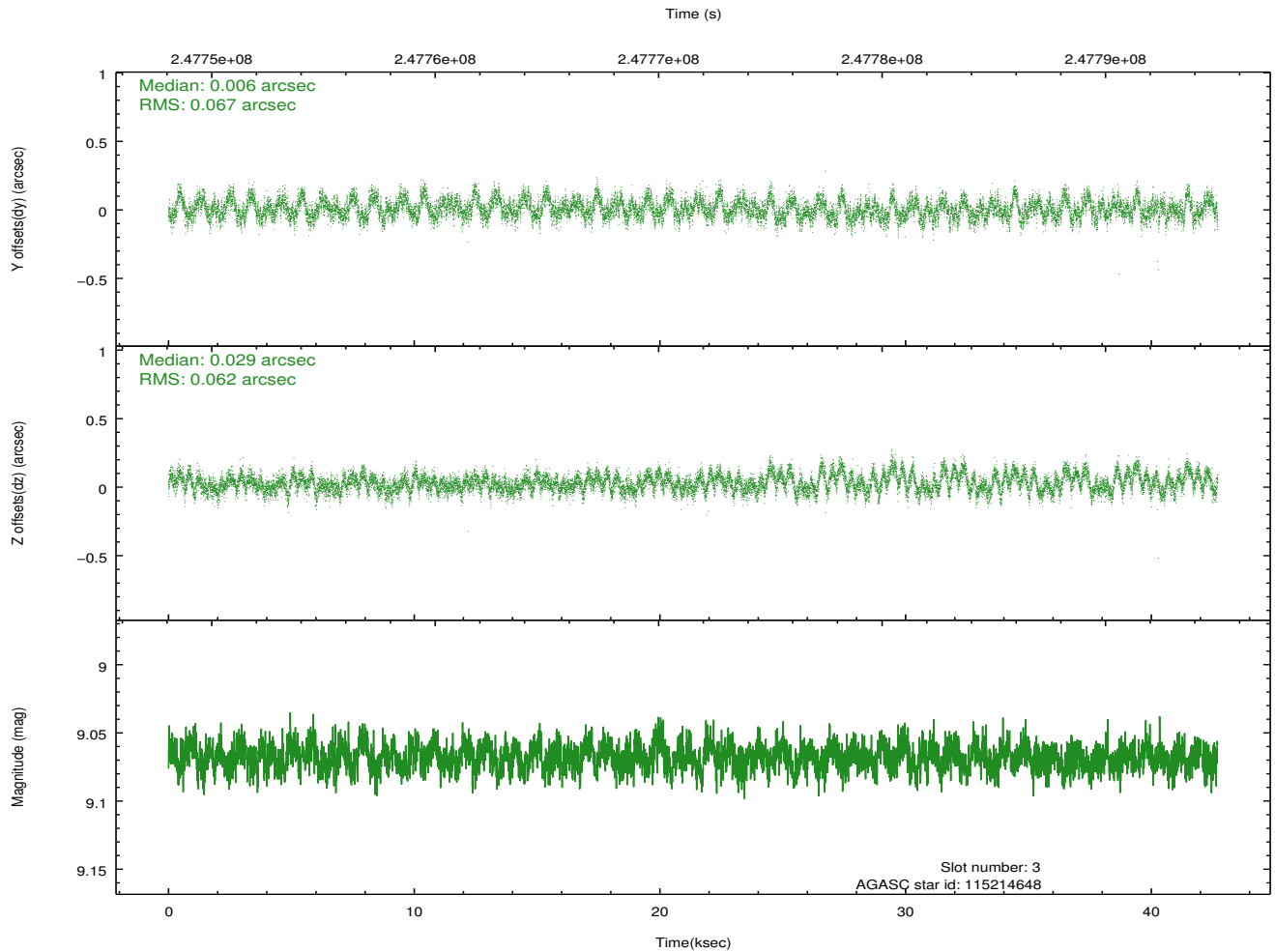
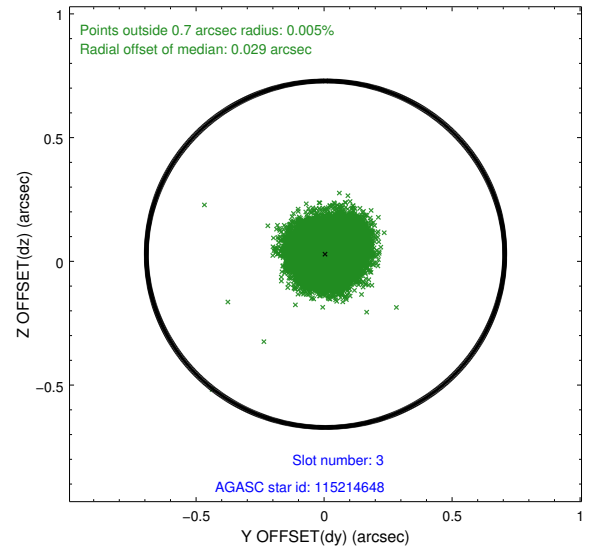
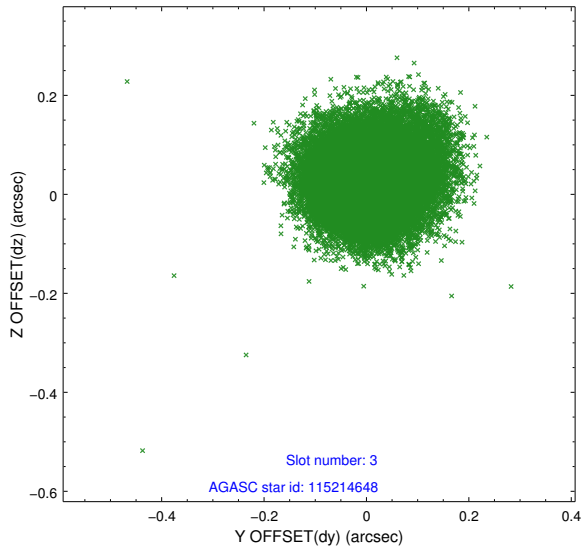


Slot Statistics

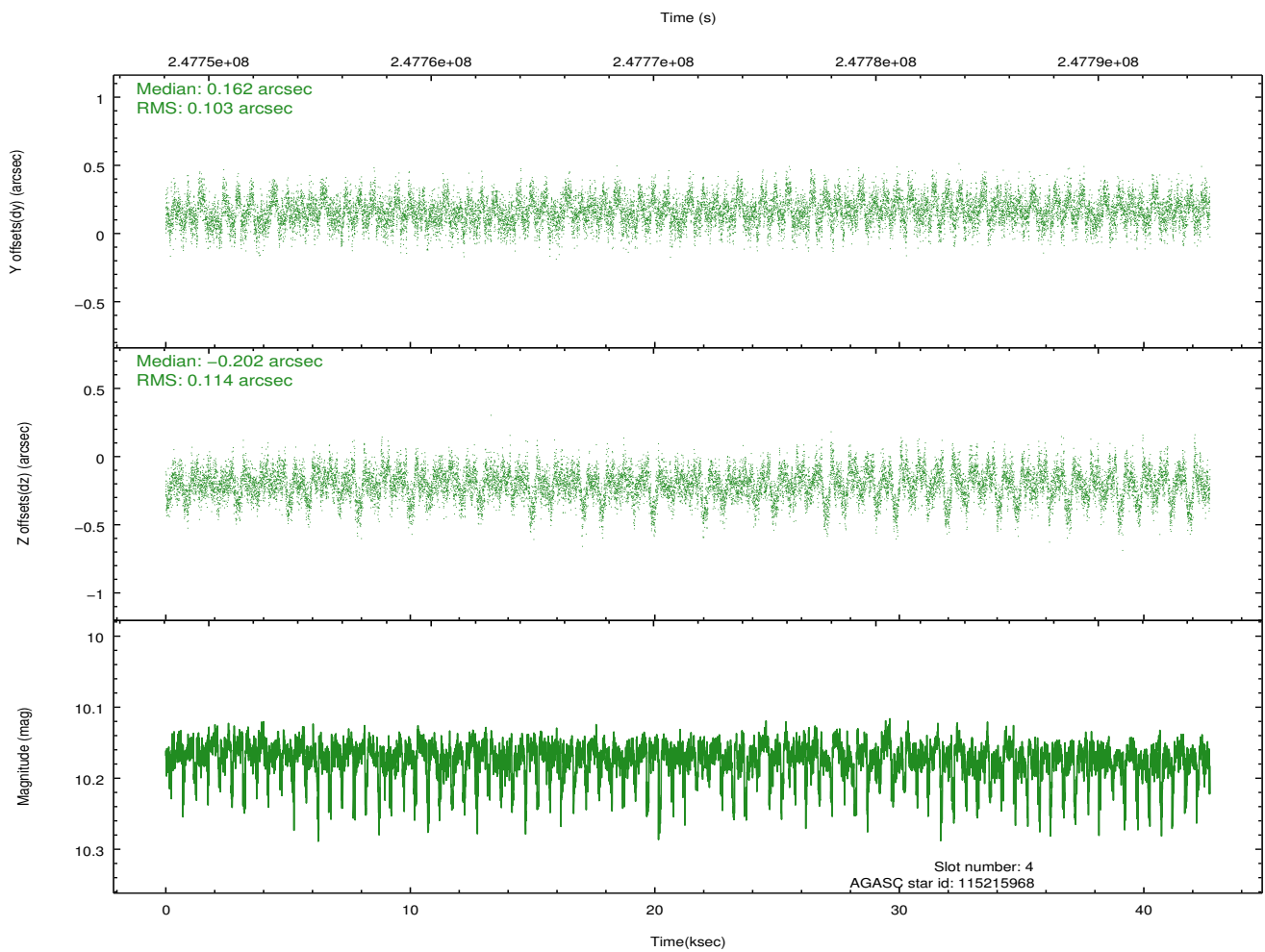
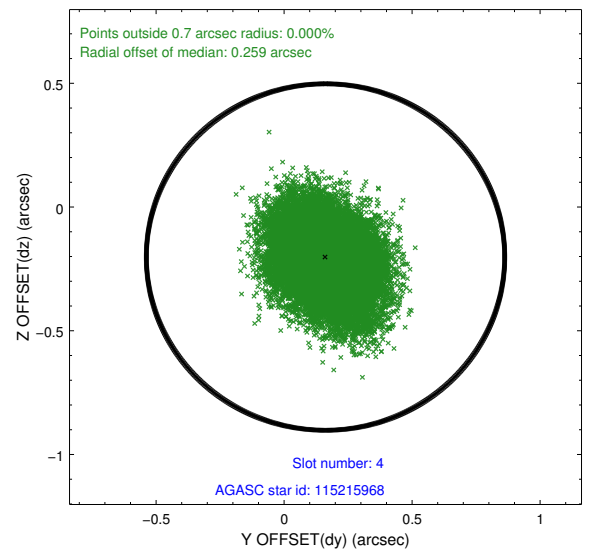
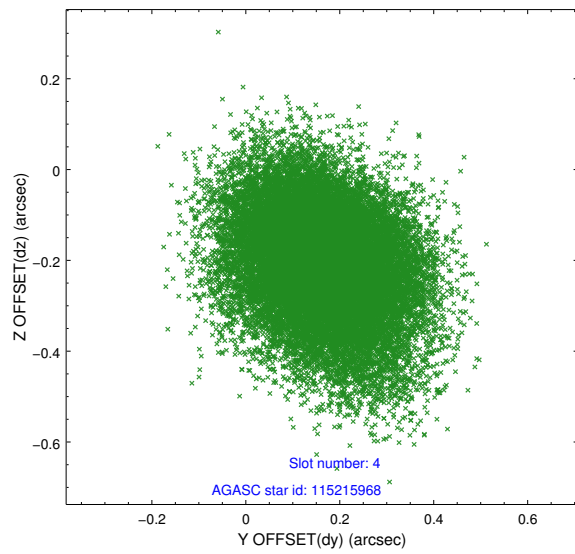
slot	status	id	mag	n_pts	med_dy	med_dz	dr1	dr2	ra	dec	mean_y	mean_z
0	FID	ACIS-S-2	7.10	10417	-0.014	-0.034	0.013	0.027	0.000000	0.000000	-760.50	-1733.62
1	FID	ACIS-S-4	7.20	10417	0.085	0.016	0.018	0.033	0.000000	0.000000	2152.88	174.90
2	FID	ACIS-S-5	7.23	10417	-0.106	0.028	0.021	0.032	0.000000	0.000000	-1813.42	168.59
3	GUIDE	115214648	9.07	20821	0.006	0.029	0.098	0.154	185.771147	12.685188	-1634.02	974.04
4	GUIDE	115215968	10.17	20807	0.162	-0.202	0.163	0.267	186.327588	13.159527	914.96	493.00
5	GUIDE	115216184	9.65	20818	0.170	-0.140	0.106	0.170	185.973150	12.580247	-1493.81	181.55
6	GUIDE	115347480	9.60	20803	-0.196	0.122	0.122	0.193	186.668576	13.310410	2080.90	-108.96
7	GUIDE	115349744	10.31	20266	-0.147	0.206	0.241	0.398	186.878186	12.752529	960.99	-1930.94

2.4 Star Slots

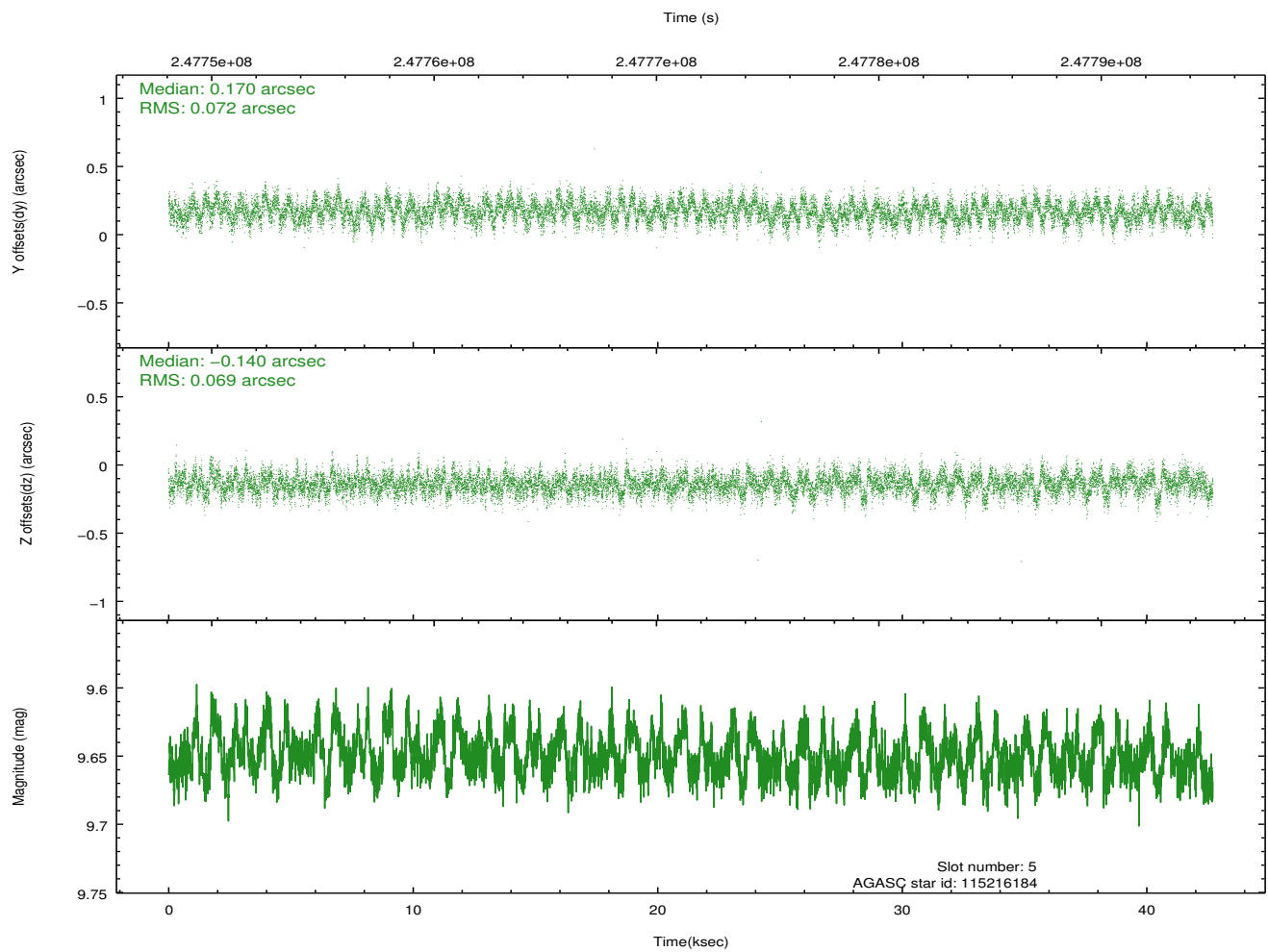
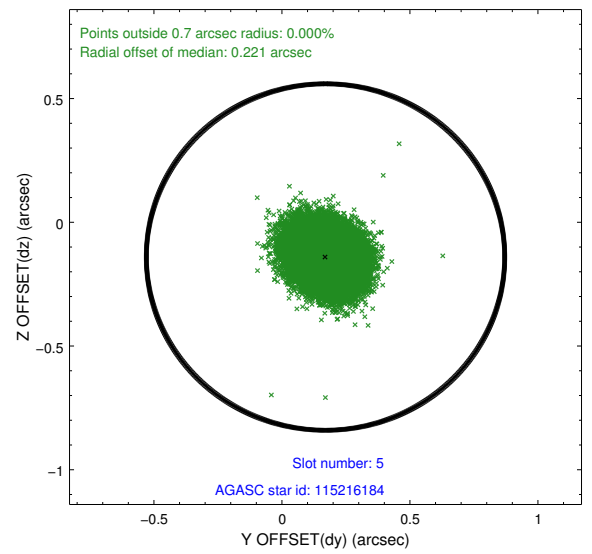
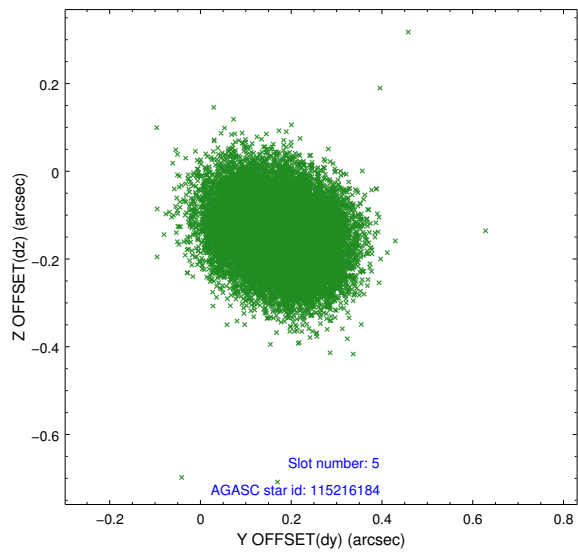
2.4.1 Slot 3



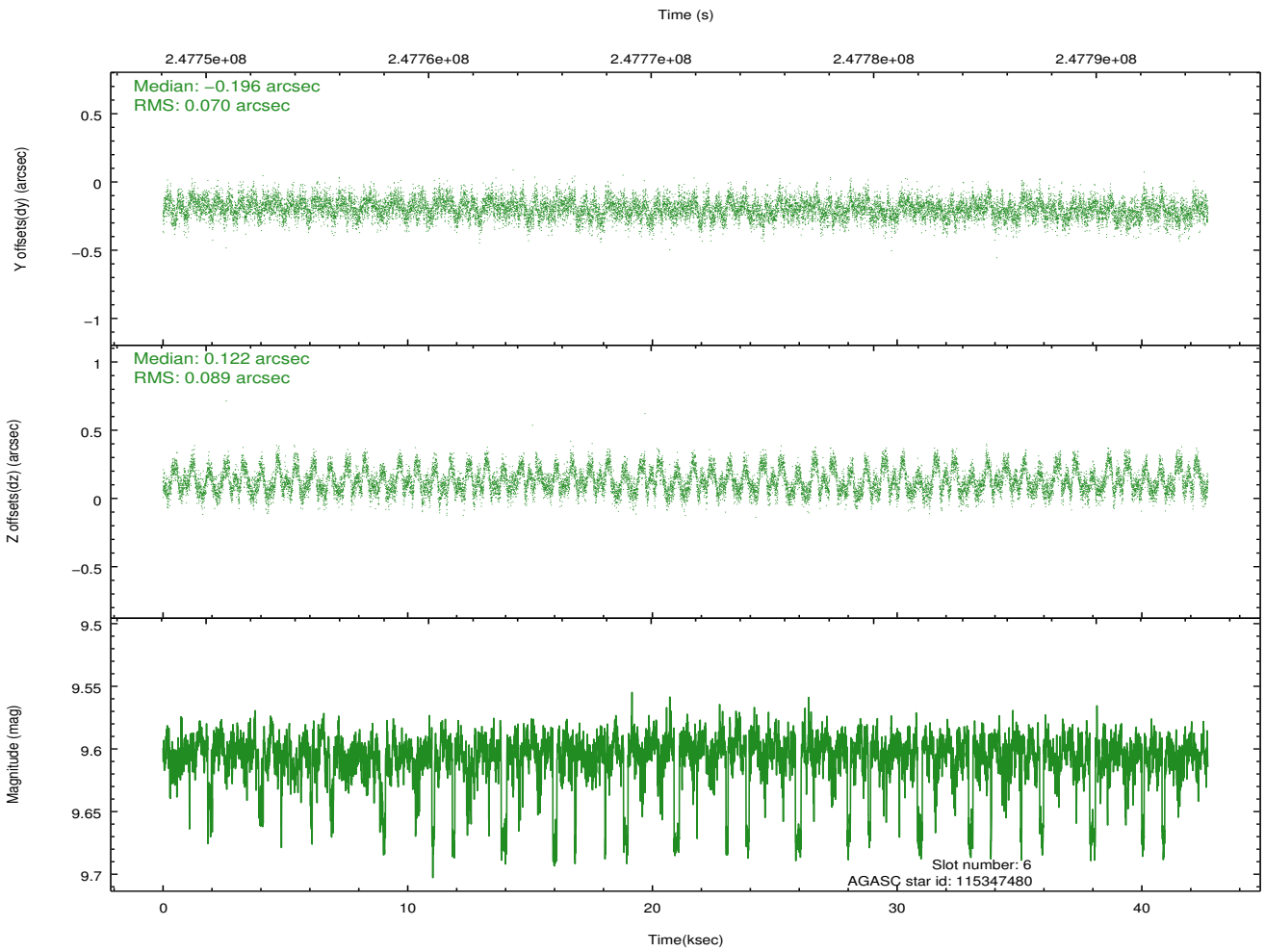
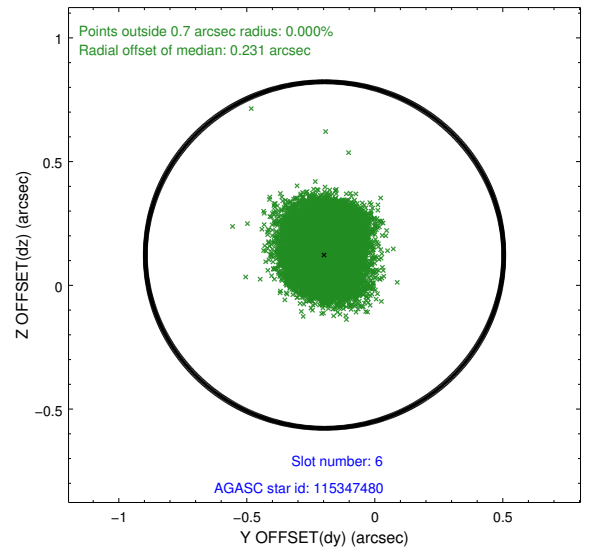
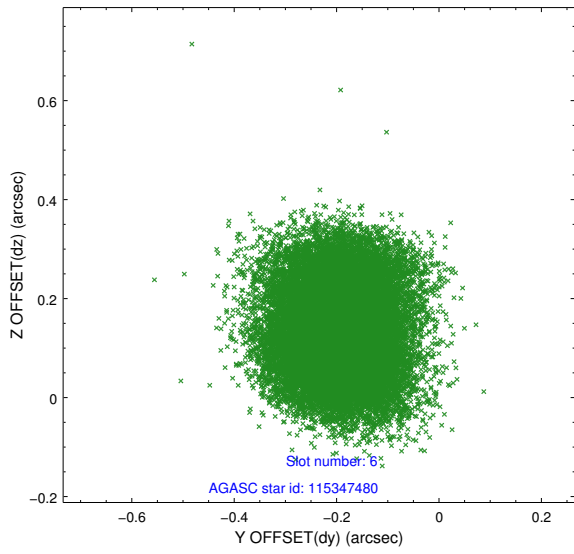
2.4.2 Slot 4



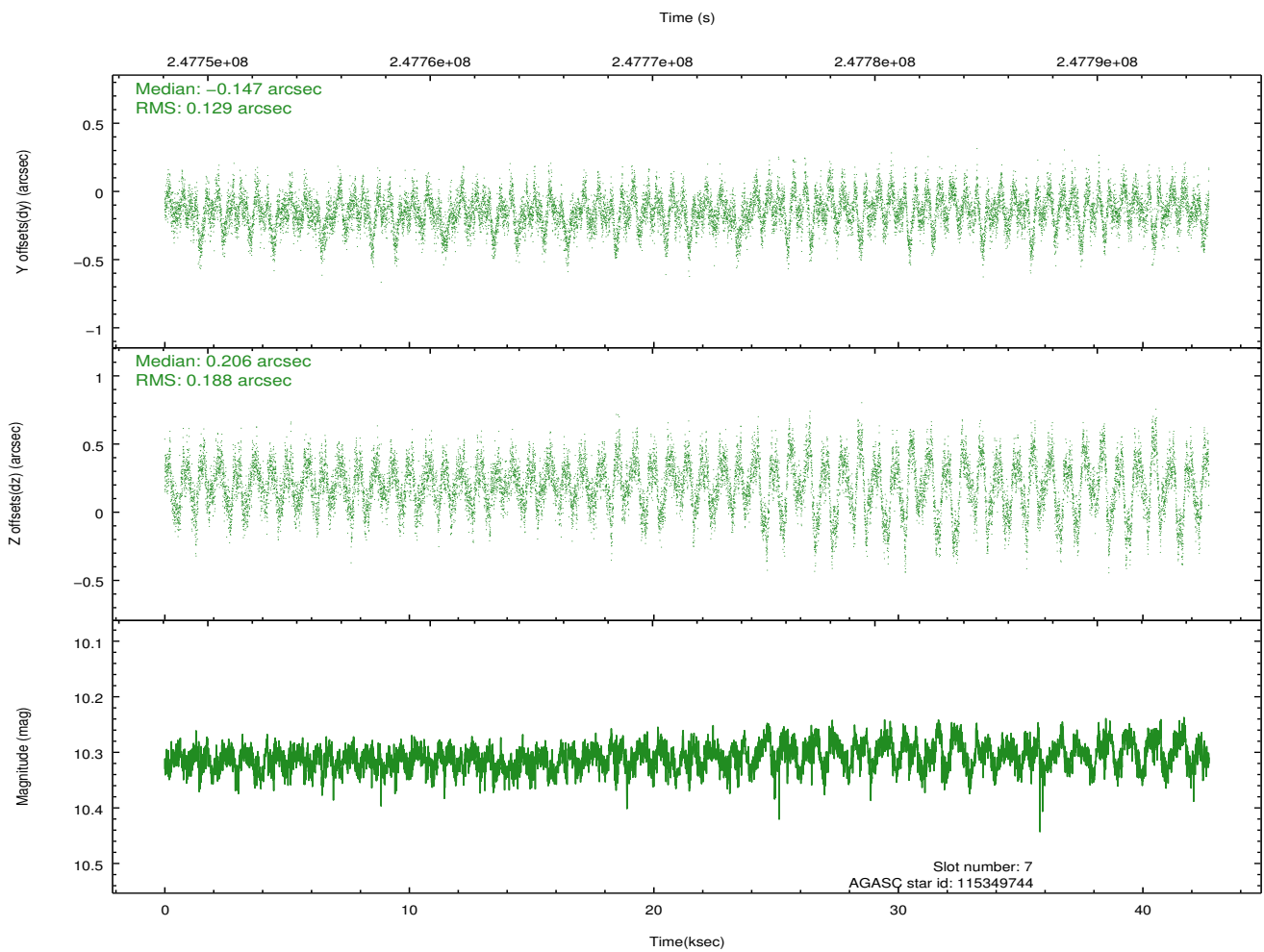
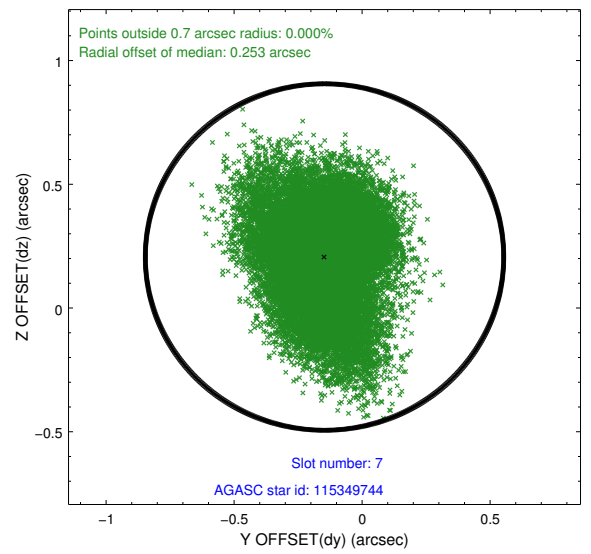
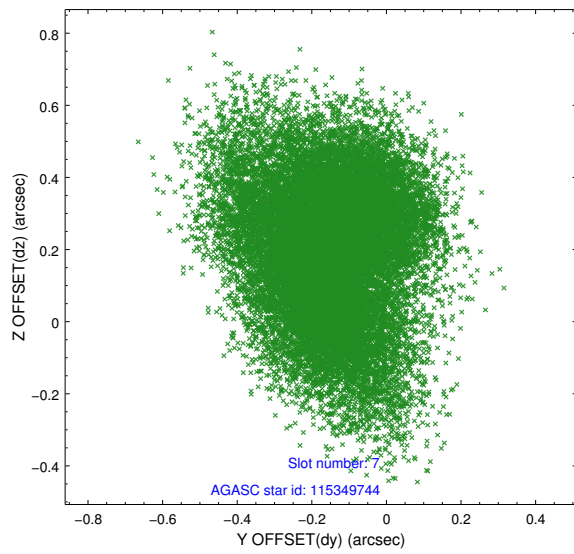
2.4.3 Slot 5



2.4.4 Slot 6

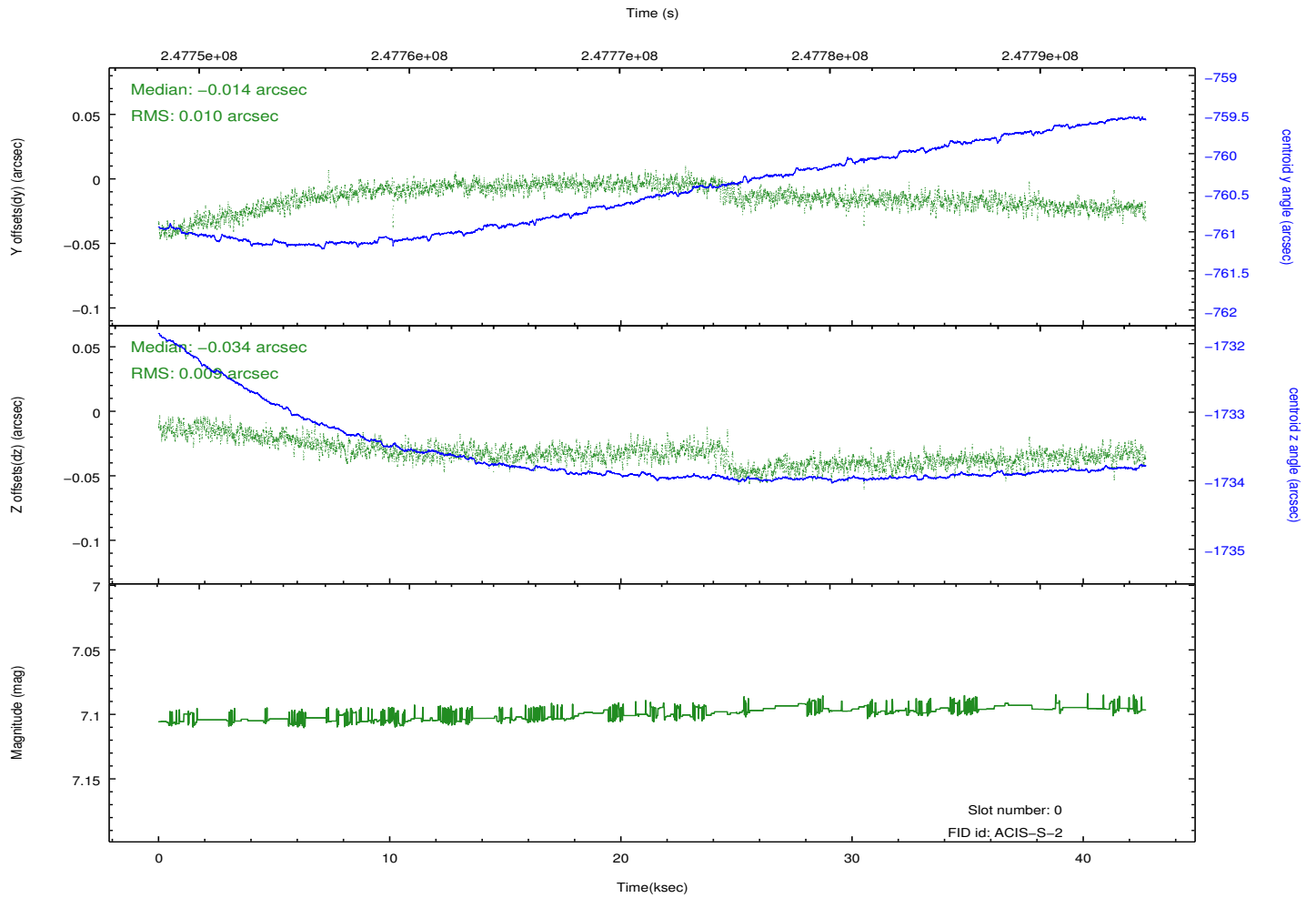
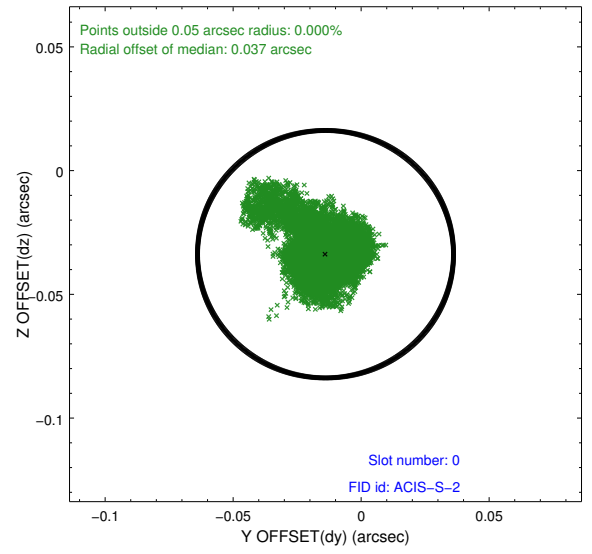
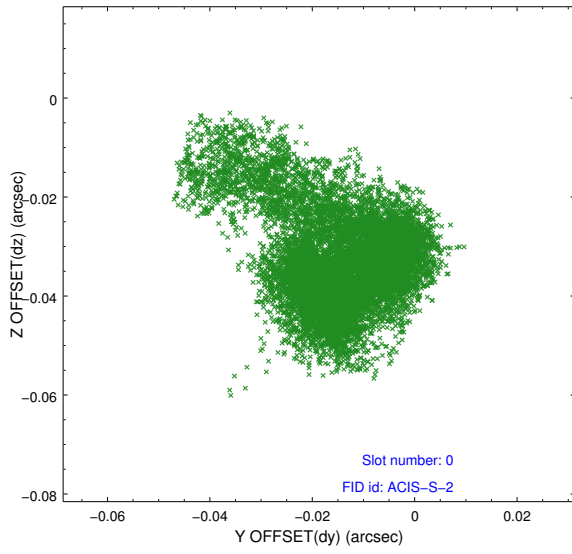


2.4.5 Slot 7

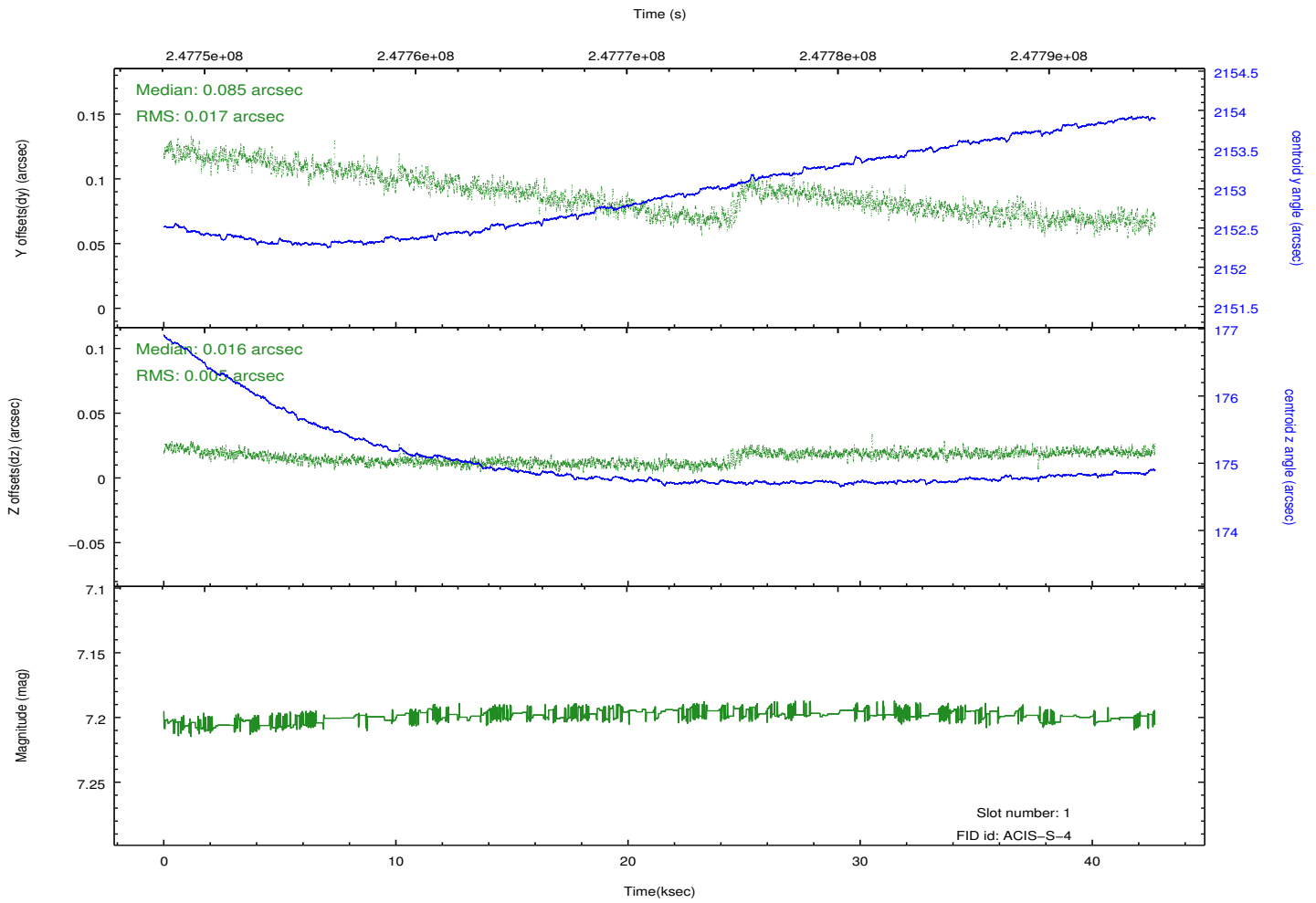
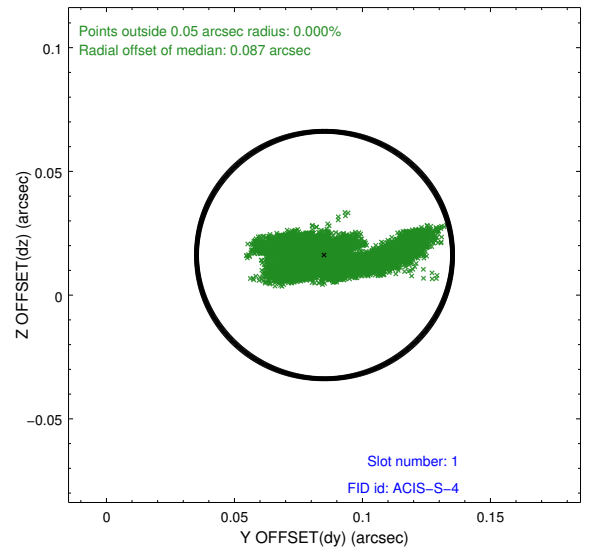
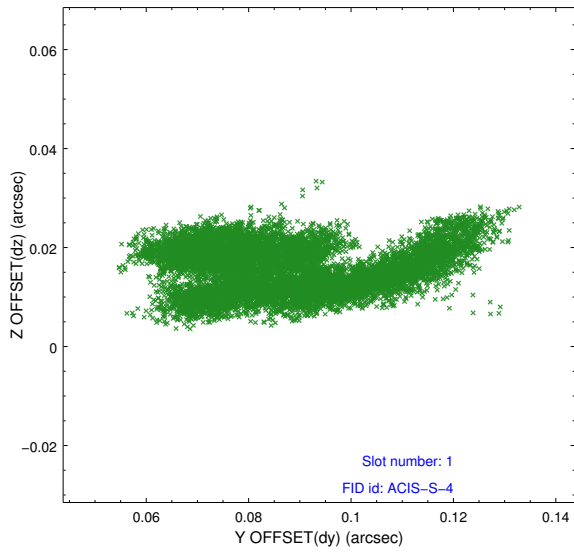


2.5 FID Slots

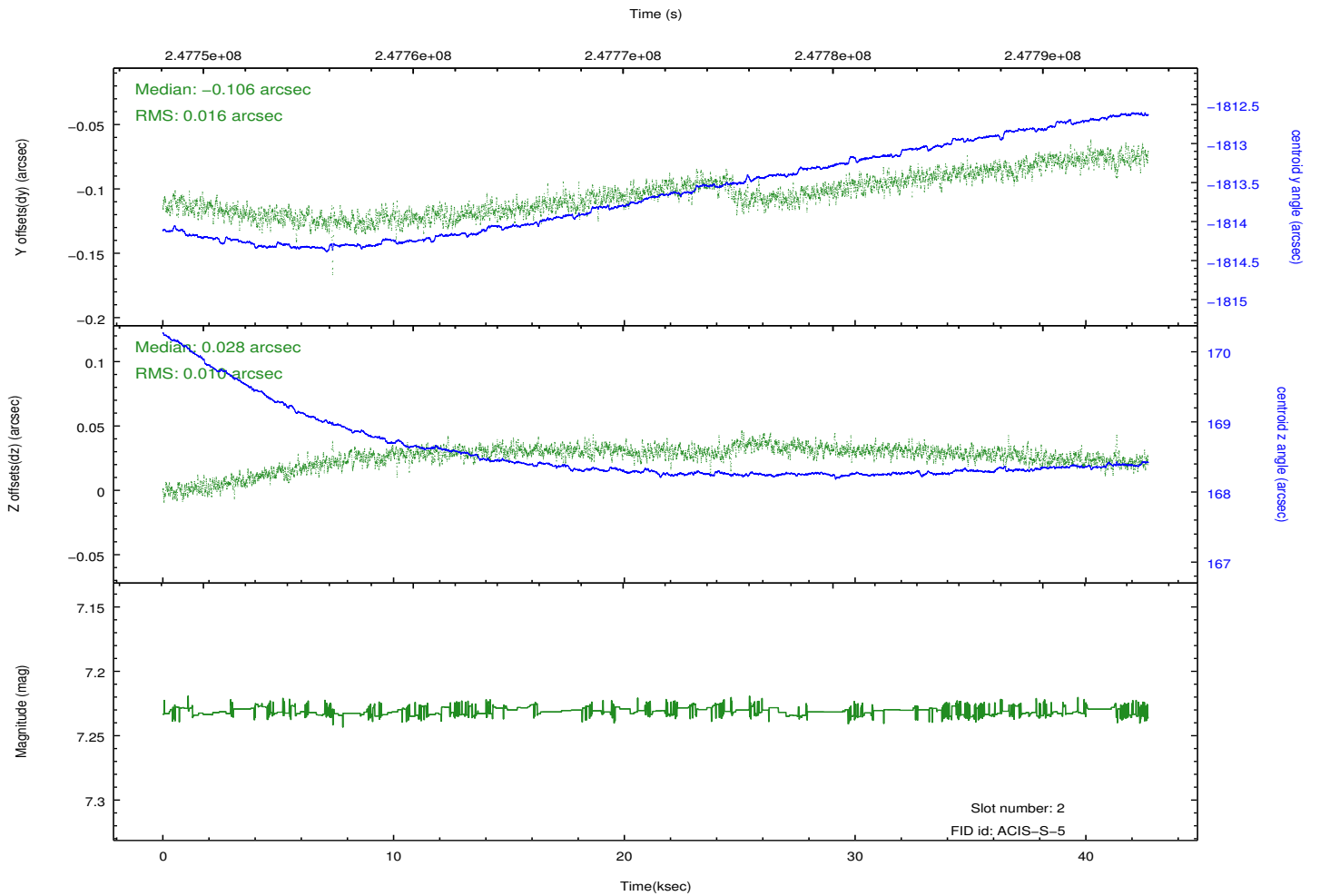
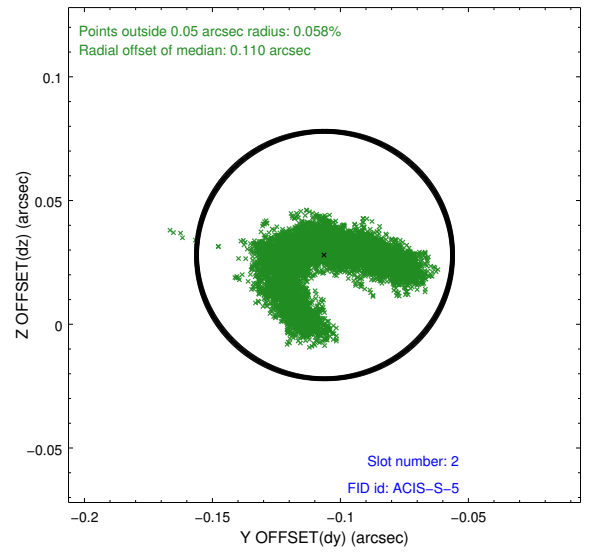
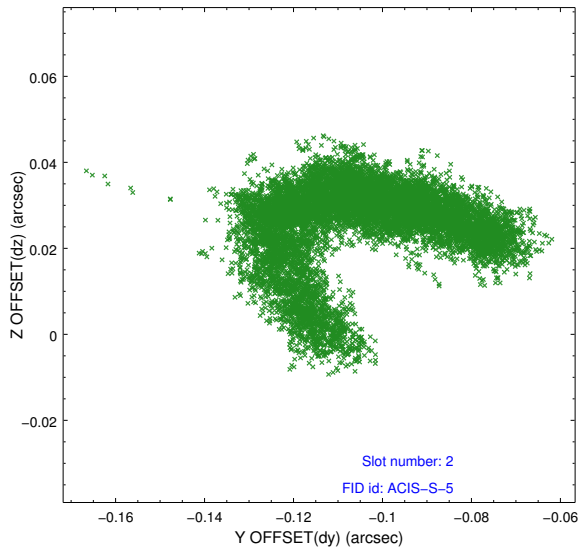
2.5.1 Slot 0



2.5.2 Slot 1



2.5.3 Slot 2



A Summary

A.1 Status

V&V Scientist	Jen Lauer
V&V Date (YYYY-MM-DD)	2013.01.28
V&V Edition	1
V&V Disposition and Status	OK
V&V Charge Time	41.45279

A.2 Comments

Monitor constraint met.