

V&V Reference Report

L2 ASCDS Version : 7.6.9

Observation 61521 - L2 Version 001
Chandra X-Ray Center

L2 Processing Date : Dec 16 2006

Contents

1	Front	2
2	OBI	3
2.1	OBI	3
2.1.1	Images	3
2.1.2	Bias	3
2.1.3	Parameters	4
2.1.4	Events	4
2.2	Compared Parameters	5
2.3	Aspect	6
2.4	Star Slots	8
2.5	FID Slots	8
A	Summary	9
A.1	Status	9
A.2	Comments	9

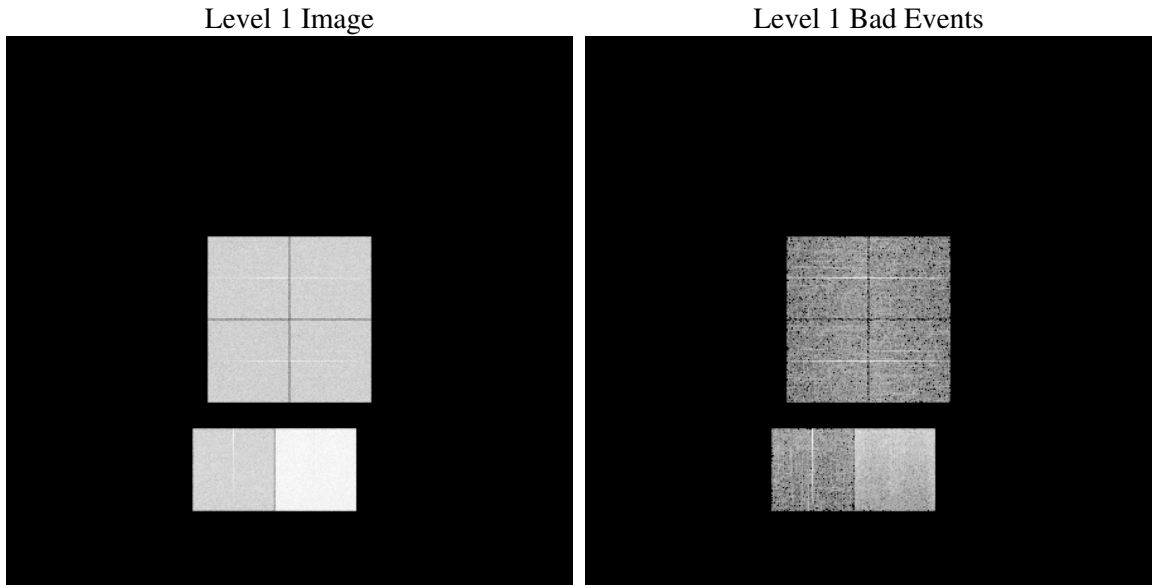
1 Front

seq_num	
obs_id	61521
title	ACIS-012367 diagnostics
observer	CHANDRA engineering request/realtime commanding
object	
dtcycle	0
cycle	P
ra_targ	0.0
dec_targ	0.0
ra_nom	359.97205720875
dec_nom	20.011420677881
roll_nom	123.80822168821
revision	2
ontime	7571.8708713651
livetime	7475.9912831586
ontime0	2967.8615442812
ontime1	3005.3299043179
ontime2	2822.0969342589
ontime3	2864.0665334016
ontime6	3110.5901946574
ontime7	7571.8708713651
l2events	1304721

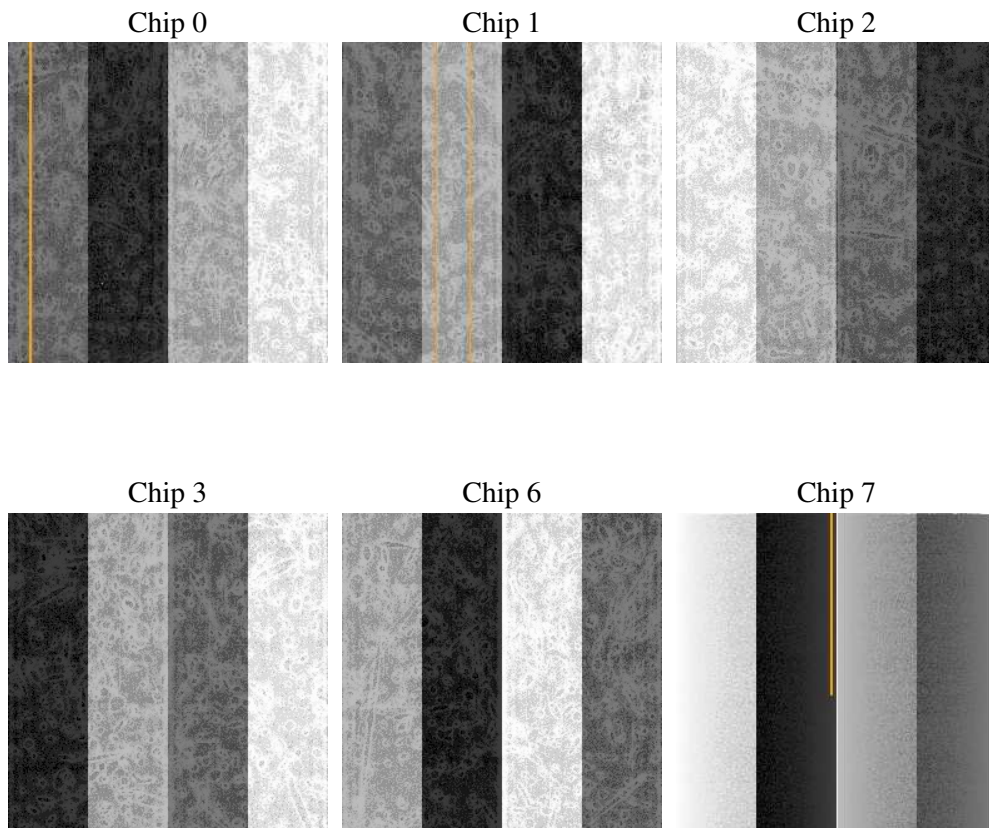
2 OBI

2.1 OBI

2.1.1 Images



2.1.2 Bias



2.1.3 Parameters

obi_num	2
ascdsver	7.6.9
caldbver	3.2.4
date	2006-12-16T05:01:29
revision	2

sched_exp_time	0.0
ontime	7574.2230391204
ontime0	2968.7893030494
ontime1	3007.6820720732
ontime2	2822.9426130354
ontime3	2865.0763721764
ontime6	3111.3948334306
ontime7	7574.2230391204
l1events	1544946

2.1.4 Events

	ccd 0	ccd 1	ccd 2	ccd 3	ccd 6	ccd 7
level 1 events	202444	204546	195237	200192	221022	521505
rejected events	23538	22462	23788	25600	26256	63886
rejected %	11%	10%	12%	12%	11%	12%

	ccd 0	ccd 1	ccd 2	ccd 3	ccd 6	ccd 7
grade 0 events	96896	98661	91302	95250	101106	78134
	47%	48%	46%	47%	45%	14%
grade 1 events	483	452	412	452	445	189
	0%	0%	0%	0%	0%	0%
grade 2 events	33631	34327	34335	33442	39498	142014
	16%	16%	17%	16%	17%	27%
grade 3 events	10872	11085	10112	10248	11092	32883
	5%	5%	5%	5%	5%	6%
grade 4 events	10797	11006	10107	10434	10951	31563
	5%	5%	5%	5%	4%	6%
grade 5 events	1672	1637	1539	1645	1923	8365
	0%	0%	0%	0%	0%	1%
grade 6 events	26710	27005	25593	25218	32119	173025
	13%	13%	13%	12%	14%	33%
grade 7 events	21383	20373	21837	23503	23888	55332
	10%	9%	11%	11%	10%	10%

2.2 Compared Parameters

Parameter	Planned	Actual	Parameter	Planned	Actual
Instrument	ACIS	ACIS	Obspar format version number	6	6
Detector	ACIS-012367	ACIS-012367	Obspar file type	PREDICTED	ACTUAL
Grating	NONE	NONE	Obspar update status	NONE	UPDATED
Data mode	FAINT	FAINT	On-chip summing requested	N	N
Observation mode	SECONDARY	SECONDARY	Subarray requested	NONE	NONE
Pointing RA	0	359.9720572087462	Alternating exposures requested	N	N
Pointing Dec	0	20.01142067788062	Primary exposure time	3.2	3.2
Pointing Roll	0.0	123.8082216882062			
SIM focus pos (mm)	-0.782348	-1.428180813131781			
SIM defocus (mm)	0	0.1051558262725154			
SIM translation stage pos (mm)	-233.592463	250.4635187648994			
SIM translation stage offset (mm)	0	-0.007540371344731511			
Observation start time	112659926.203695	112659925.43526			
Observation start date	2001-07-27T22:25:26	2001-07-27T22:25:25			
Observation end time	112675580.004309	112675579.23587			
Observation end date	2001-07-28T02:46:20	2001-07-28T02:46:19			
Read mode	TIMED	TIMED			

2.3 Aspect

2.4 Star Slots

2.5 FID Slots

A Summary

A.1 Status

V&V Scientist	Beth Sundheim
V&V Date (YYYY-MM-DD)	2006.12.17
V&V Edition	1
V&V Disposition and Status	OK
V&V Charge Time	7.57187087

A.2 Comments

Focal plane temperature is warmer than -118.7 C degrees during the entire observation. This temperature is the upper limit of the verified ACIS calibration for the front-illuminated chips.