

V&V Reference Report

L2 ASCDS Version : 7.6.9

Observation 61571 - L2 Version 001
Chandra X-Ray Center

L2 Processing Date : Dec 8 2006

Contents

1	Front	2
2	OBI	3
2.1	OBI	3
2.1.1	Images	3
2.1.2	Bias	3
2.1.3	Parameters	4
2.1.4	Events	4
2.2	Compared Parameters	5
2.3	Aspect	6
2.4	Star Slots	8
2.5	FID Slots	8
A	Summary	9
A.1	Status	9
A.2	Comments	9

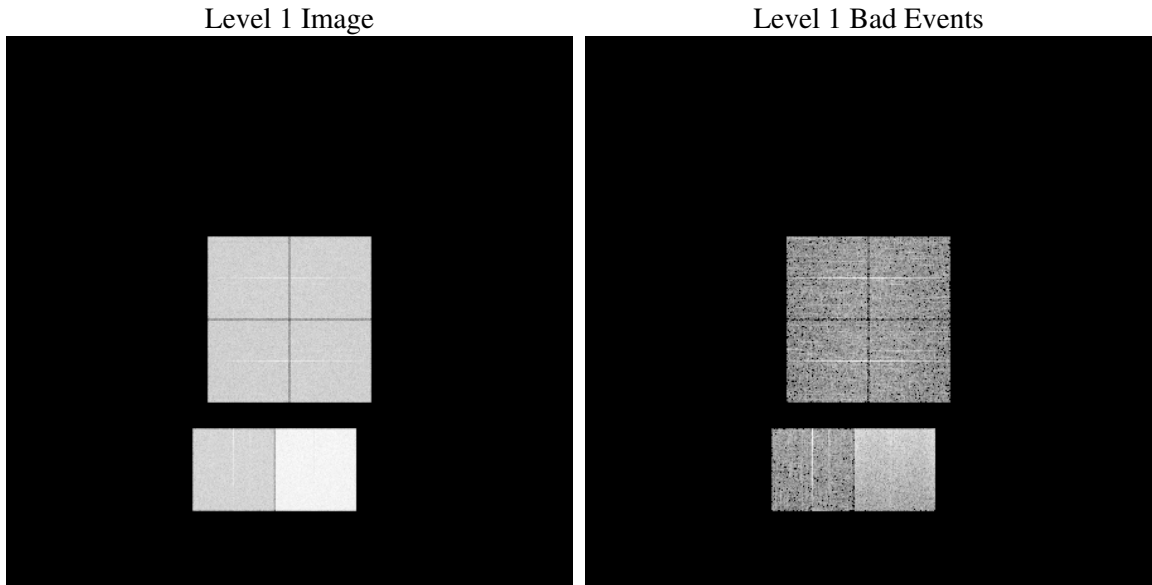
1 Front

seq_num	
obs_id	61571
title	ACIS-012367 diagnostics
observer	CHANDRA engineering request/realtime commanding
object	
dtcycle	0
cycle	P
ra_targ	0.0
dec_targ	0.0
ra_nom	170.0030155457
dec_nom	-20.028526179785
roll_nom	242.95463875765
revision	2
ontime	7270.8316187859
livetime	7178.7639708596
ontime0	2889.0256979018
ontime1	2914.9541971684
ontime2	2736.688152492
ontime3	2788.5537671596
ontime6	3054.2681343555
ontime7	7270.8316187859
l2events	1319426

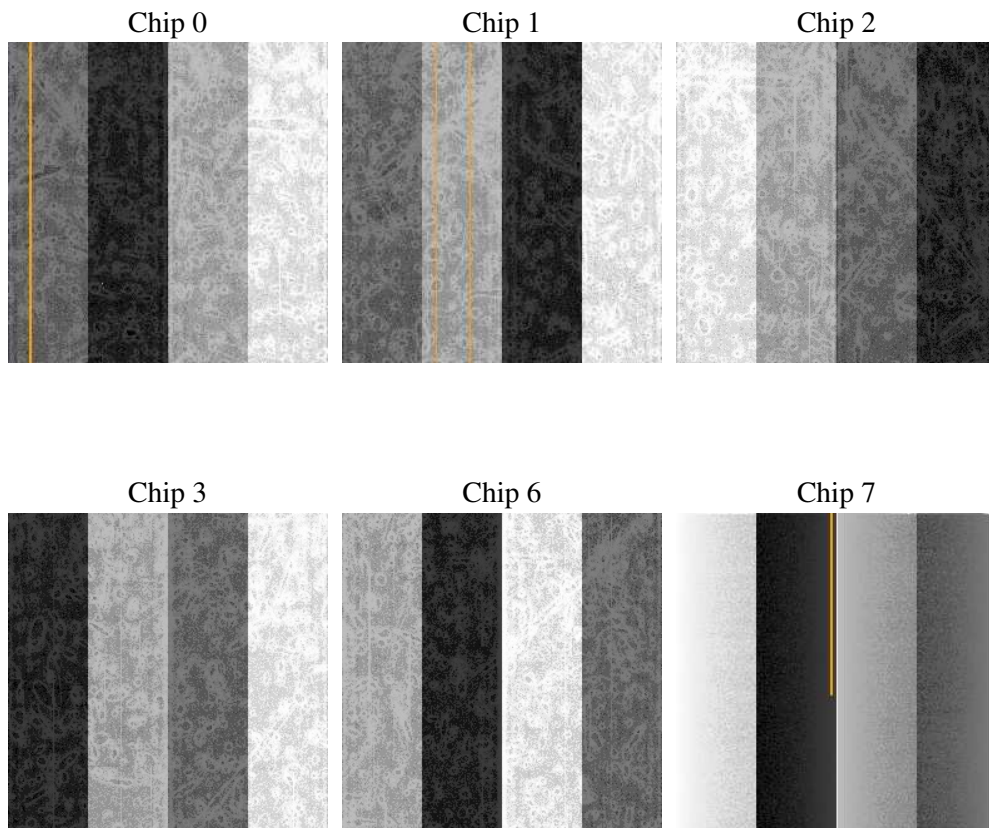
2 OBI

2.1 OBI

2.1.1 Images



2.1.2 Bias



2.1.3 Parameters

obi_num	0
ascdsver	7.6.9
caldbver	3.2.4
date	2006-12-08T17:52:04
revision	2

sched_exp_time	0.0
ontime	7301.9795039445
ontime0	2897.4866021872
ontime1	2926.656141445
ontime2	2748.3992709816
ontime3	2797.0146714449
ontime6	3066.0202928483
ontime7	7301.9795039445
l1events	1547664

2.1.4 Events

	ccd 0	ccd 1	ccd 2	ccd 3	ccd 6	ccd 7
level 1 events	204311	205228	195964	200299	225202	516660
rejected events	22920	23052	22953	22855	24370	56539
rejected %	11%	11%	11%	11%	10%	10%

	ccd 0	ccd 1	ccd 2	ccd 3	ccd 6	ccd 7
grade 0 events	99774	101087	96533	99573	109694	88235
	48%	49%	49%	49%	48%	17%
grade 1 events	546	543	530	555	558	236
	0%	0%	0%	0%	0%	0%
grade 2 events	32482	32287	30532	31229	35034	136633
	15%	15%	15%	15%	15%	26%
grade 3 events	11576	11541	10902	11197	12568	35507
	5%	5%	5%	5%	5%	6%
grade 4 events	11573	11532	10938	11176	12590	35046
	5%	5%	5%	5%	5%	6%
grade 5 events	1580	1651	1535	1627	1811	7988
	0%	0%	0%	0%	0%	1%
grade 6 events	26596	26534	24923	24909	31740	166724
	13%	12%	12%	12%	14%	32%
grade 7 events	20184	20053	20071	20033	21207	46291
	9%	9%	10%	10%	9%	8%

2.2 Compared Parameters

Parameter	Planned	Actual	Parameter	Planned	Actual
Instrument	ACIS	ACIS	Obspar format version number	6	6
Detector	ACIS-012367	ACIS-012367	Obspar file type	PREDICTED	ACTUAL
Grating	NONE	NONE	Obspar update status	NONE	UPDATED
Data mode	FAINT	FAINT	On-chip summing requested	N	N
Observation mode	SECONDARY	SECONDARY	Subarray requested	NONE	NONE
Pointing RA	0	170.0030155457005	Alternating exposures requested	N	N
Pointing Dec	0	-20.02852617978484	Primary exposure time	3.2	3.2
Pointing Roll	0.0	242.9546387576485			
SIM focus pos (mm)	-0.782348	-0.6828225247311905			
SIM defocus (mm)	0	0.8505141146731063			
SIM translation stage pos (mm)	-233.592463	250.466033080201			
SIM translation stage offset (mm)	0	-0.01005468664627074			
Observation start time	109914174.546296	109914173.77783			
Observation start date	2001-06-26T03:42:55	2001-06-26T03:42:53			
Observation end time	109936417.047157	109936416.2787			
Observation end date	2001-06-26T09:53:37	2001-06-26T09:53:36			
Read mode	TIMED	TIMED			

2.3 Aspect

2.4 Star Slots

2.5 FID Slots

A Summary

A.1 Status

V&V Scientist	Beth Sundheim
V&V Date (YYYY-MM-DD)	2006.12.08
V&V Edition	1
V&V Disposition and Status	OK
V&V Charge Time	7.27083161

A.2 Comments