

# V&V Reference Report

## L2 ASCDS Version : 8.5.1.1

Observation 6291 - L2 Version 3  
Chandra X-Ray Center

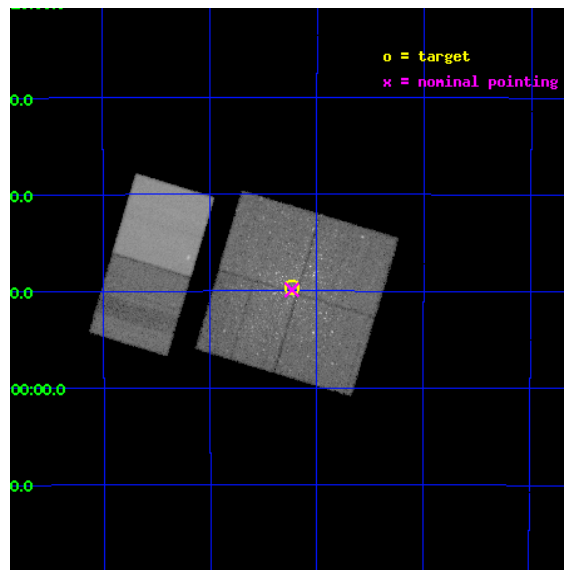
L2 Processing Date : Dec 26 2012

## Contents

<b>1</b>	<b>Front</b>	<b>2</b>
<b>2</b>	<b>OBI</b>	<b>3</b>
2.1	OBI . . . . .	3
2.1.1	Images . . . . .	3
2.1.2	Bias . . . . .	3
2.1.3	Parameters . . . . .	4
2.1.4	Events . . . . .	4
2.2	Compared Parameters . . . . .	5
2.3	Aspect . . . . .	6
2.4	Star Slots . . . . .	9
2.4.1	Slot 3 . . . . .	9
2.4.2	Slot 4 . . . . .	10
2.4.3	Slot 5 . . . . .	11
2.4.4	Slot 6 . . . . .	12
2.4.5	Slot 7 . . . . .	13
2.5	FID Slots . . . . .	14
2.5.1	Slot 0 . . . . .	14
2.5.2	Slot 1 . . . . .	15
2.5.3	Slot 2 . . . . .	16
<b>A</b>	<b>Summary</b>	<b>17</b>
A.1	Status . . . . .	17
A.2	Comments . . . . .	17

# 1 Front

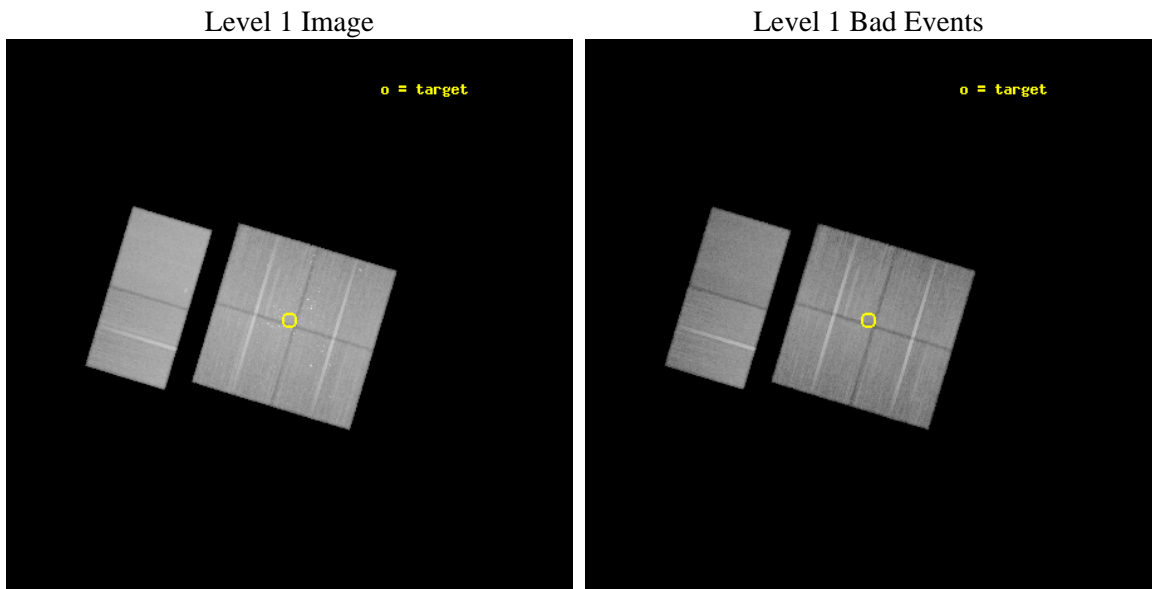
seq_num	200307	Sequence number
obs_id	6291	Observation id
title	Star formation in the young star cluster NGC 6231	Proposal title
observer	Dr. Stephen Murray	Principal investigator
object	NGC 6231	Source name
dtcycle	0	&#160
cycle	P	events from which exps? Prim/Second/Both
ra_targ	253.559167	Observer's specified target RA [deg]
dec_targ	-41.826806	Observer's specified target Dec [deg]
ra_nom	253.55850379211	Nominal RA [deg]
dec_nom	-41.831427978739	Nominal Dec [deg]
roll_nom	286.7426187056	Nominal Roll [deg]
revision	3	Processing version of data
ontime	44953.558842212	Sum of GTIs [s]
livetime	44384.329812368	Livetime [s]
ontime0	44956.799832523	Sum of GTIs [s]
ontime1	44956.799832523	Sum of GTIs [s]
ontime2	44953.558842242	Sum of GTIs [s]
ontime3	44953.558842212	Sum of GTIs [s]
ontime6	44956.799832523	Sum of GTIs [s]
ontime7	44956.799832523	Sum of GTIs [s]
l2events	464966	Number of level 2 events



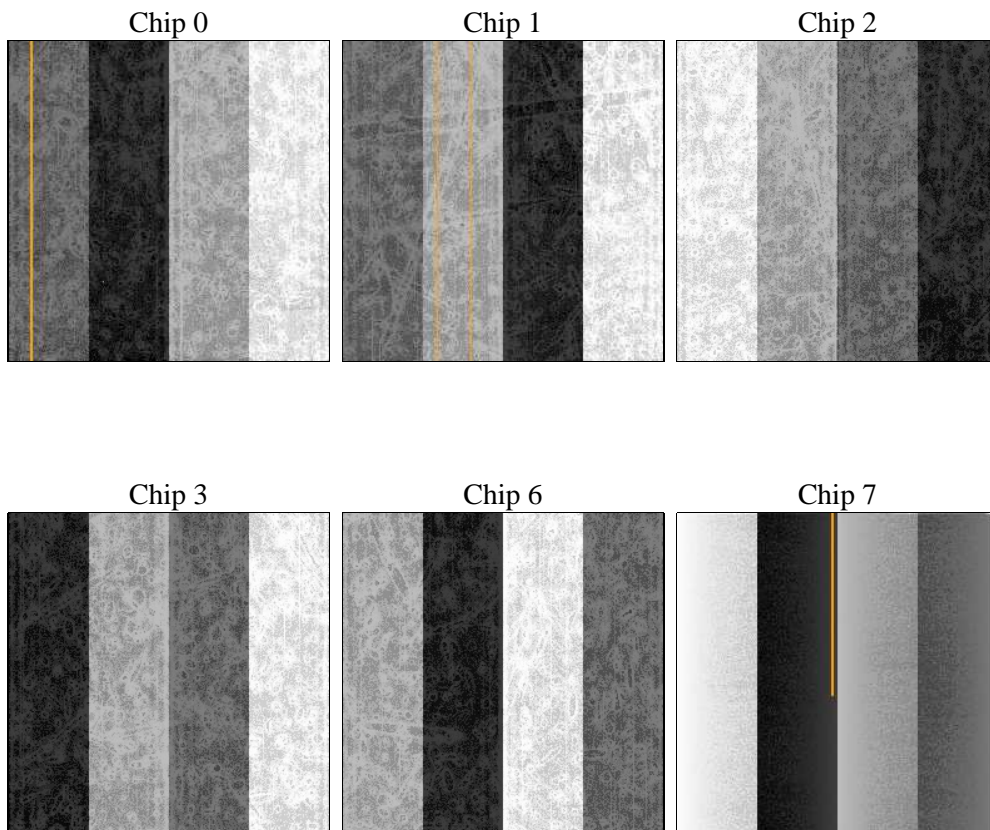
## 2 OBI

### 2.1 OBI

#### 2.1.1 Images



#### 2.1.2 Bias



### 2.1.3 Parameters

obi_num	1	Obi number	sched_exp_time	45000.000000	[s] Scheduled observation exposure time
ascdsver	8.5.1.1	Processing system revision	ontime	44953.558842212	Sum of GTIs [s]
caldbver	4.5.5	&#160	ontime0	44956.799832523	Sum of GTIs [s]
date	2012-12-26T13:45:30	Date and time of file creation	ontime1	44956.799832523	Sum of GTIs [s]
revision	3	Processing version of data	ontime2	44953.558842242	Sum of GTIs [s]
			ontime3	44953.558842212	Sum of GTIs [s]
			ontime6	44956.799832523	Sum of GTIs [s]
			ontime7	44956.799832523	Sum of GTIs [s]
			l1events	2250702	Number of level 1 events

### 2.1.4 Events

	ccd 0	ccd 1	ccd 2	ccd 3	ccd 6	ccd 7		ccd 0	ccd 1	ccd 2	ccd 3	ccd 6	ccd 7
level 1 events	335996	348075	378240	373423	377955	437013	grade 0 events	32014	33777	37229	33241	22234	18549
rejected events	270078	277096	307065	307505	322762	247228		9%	9%	9%	8%	5%	4%
rejected %	80%	79%	81%	82%	85%	56%	grade 1 events	254	252	325	302	202	512
								0%	0%	0%	0%	0%	0%
							grade 2 events	15493	16651	15359	14481	15278	39700
								4%	4%	4%	3%	4%	9%
							grade 3 events	4186	4500	4011	4092	3692	16927
								1%	1%	1%	1%	0%	3%
							grade 4 events	3877	4378	4887	4147	3699	16464
								1%	1%	1%	1%	0%	3%
							grade 5 events	12481	13070	12387	14186	14643	40138
								3%	3%	3%	3%	3%	9%
							grade 6 events	10350	11682	9702	9967	10295	98173
								3%	3%	2%	2%	2%	22%
							grade 7 events	257341	263765	294340	293007	307912	206550
								76%	75%	77%	78%	81%	47%

## 2.2 Compared Parameters

Parameter	Planned	Actual	Parameter	Planned	Actual
Instrument	ACIS	ACIS	Obspar format version number	7	7
Detector	ACIS-012367	ACIS-012367	Obspar file type	PREDICTED	ACTUAL
Grating	NONE	NONE	Obspar update status	NONE	UPDATED
Data mode	FAINT	FAINT	Number of optional ACIS chips dropped	0	0
Observation mode	POINTING	POINTING	On-chip summing requested	N	N
[deg] Pointing RA	253.531627	253.5585037921056	Subarray requested	NONE	NONE
[deg] Pointing Dec	-41.812733	-41.83142797873909	Alternating exposures requested	N	N
[deg] Pointing Roll	286.516010	286.7426187055992	[s] Primary exposure time	0.000000	3.2
[mm] SIM focus pos	-0.782348	-0.7809083437167272			
[mm] SIM defocus	0	0.001439871863259334			
[mm] SIM translation stage pos	-233.592463	-233.5874344608287			
[mm] SIM translation stage offset	0	-0.005018542100998502			
[s] Observation start time (MET)	237934279.184000	237932992.30963			
Observation start date	2005-07-16T20:50:15	2005-07-16T20:29:52			
[s] Observation end time (MET)	237979279.184000	237979695.41176			
Observation end date	2005-07-17T09:20:15	2005-07-17T09:28:15			
Read mode	TIMED	TIMED			

## 2.3 Aspect

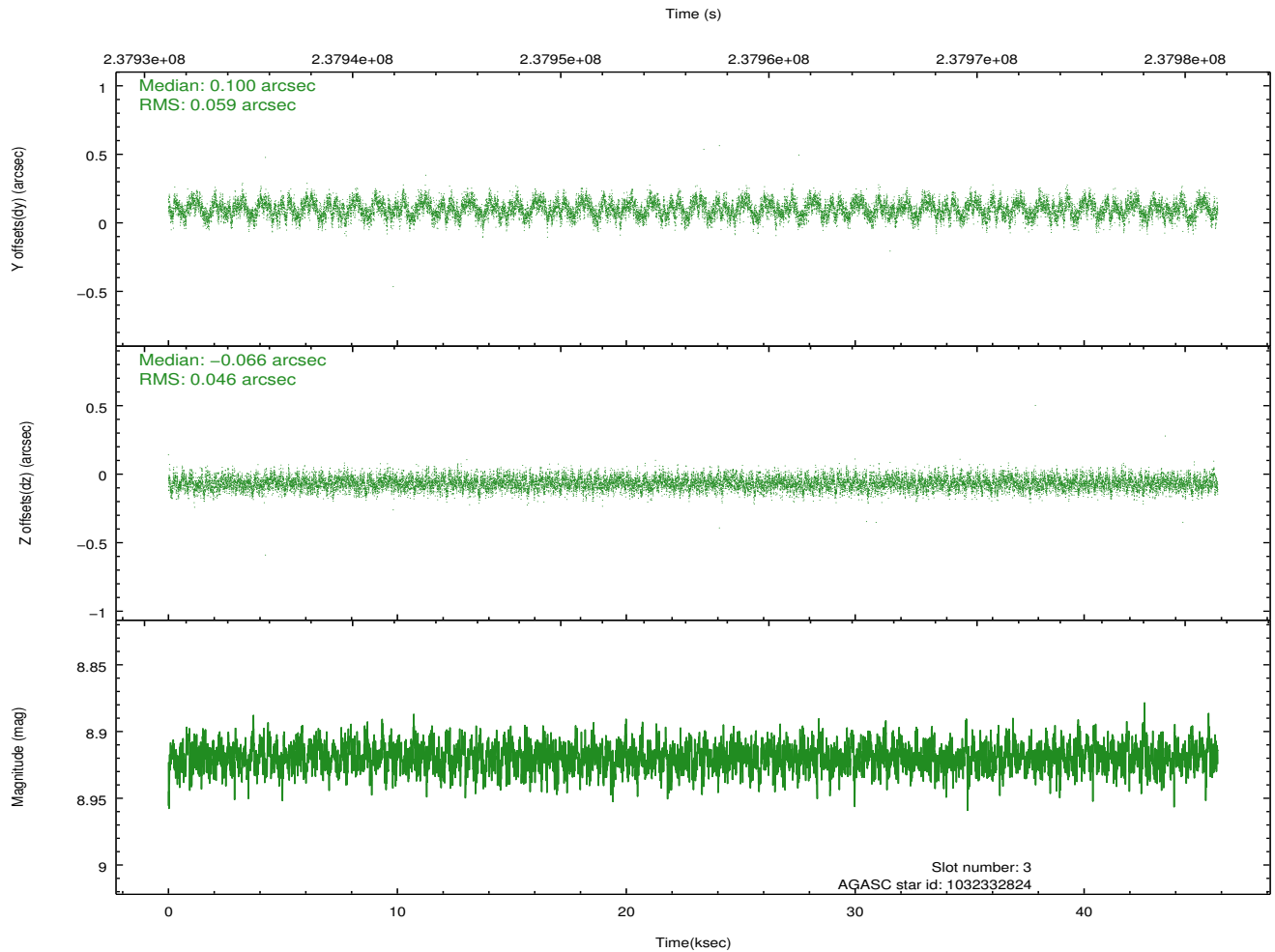
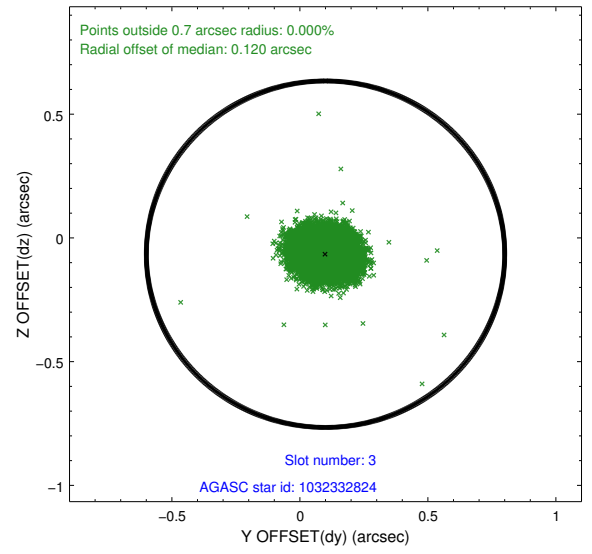
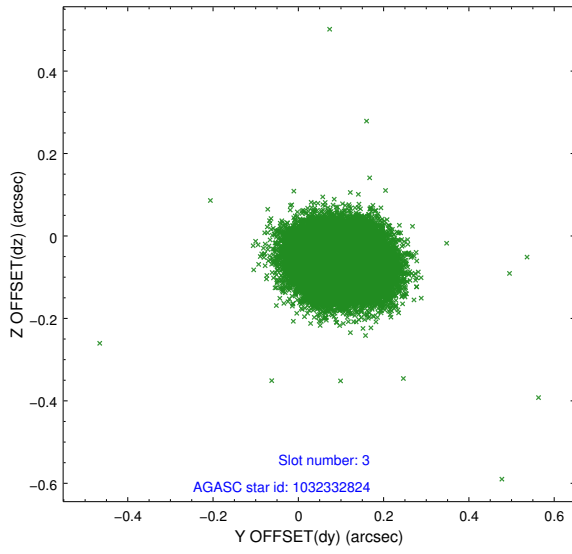


### Slot Statistics

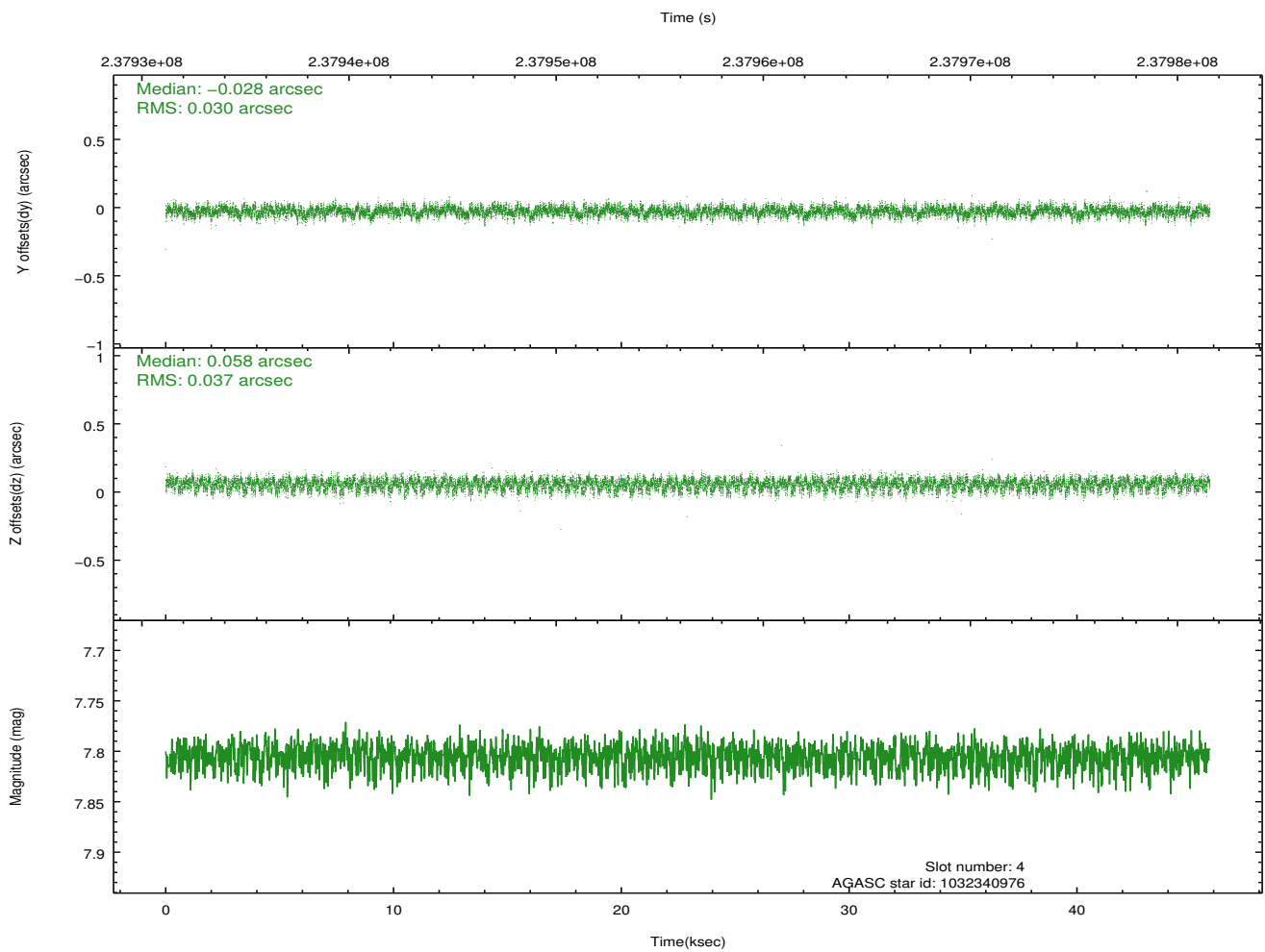
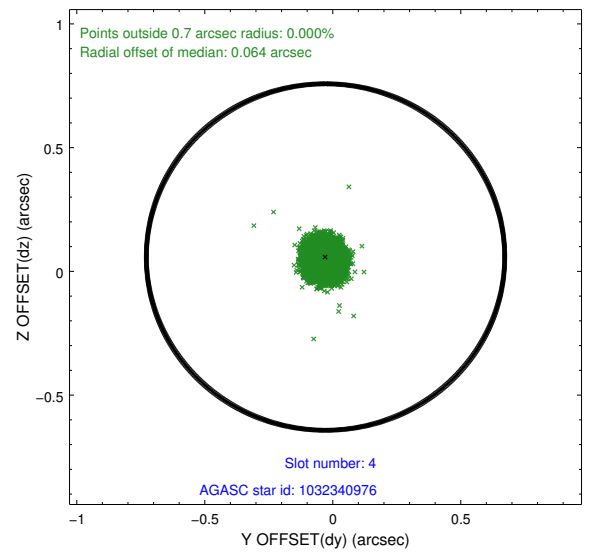
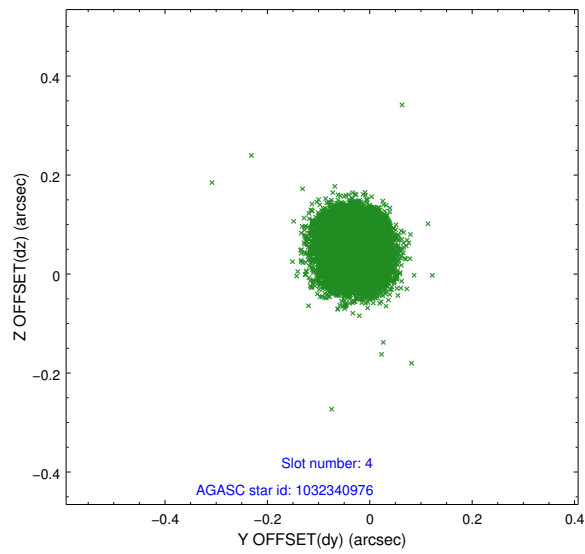
slot	status	id	mag	n_pts	med_dy	med_dz	dr1	dr2	ra	dec	mean_y	mean_z
0	FID	ACIS-I-1	7.24	11181	-0.029	0.021	0.011	0.019	0.000000	0.000000	932.33	-833.49
1	FID	ACIS-I-4	7.18	11181	0.138	0.023	0.011	0.017	0.000000	0.000000	2152.55	1066.31
2	FID	ACIS-I-5	7.23	11179	-0.207	0.027	0.008	0.014	0.000000	0.000000	-1815.84	1064.18
3	GUIDE	1032332824	8.92	22350	0.100	-0.066	0.080	0.126	253.226957	-42.348581	1620.96	-1325.63
4	GUIDE	1032340976	7.81	22355	-0.028	0.058	0.051	0.083	254.202894	-41.913283	865.12	1619.47
5	GUIDE	1032343488	6.94	22361	0.017	-0.021	0.051	0.079	252.725884	-41.830381	-543.17	-2092.96
6	GUIDE	1031816088	7.77	22359	-0.033	0.028	0.082	0.143	254.188586	-41.154482	-1759.41	2378.97
7	GUIDE	1032343792	8.31	22355	-0.062	0.008	0.078	0.125	252.506015	-41.621252	-1429.36	-2454.81

## 2.4 Star Slots

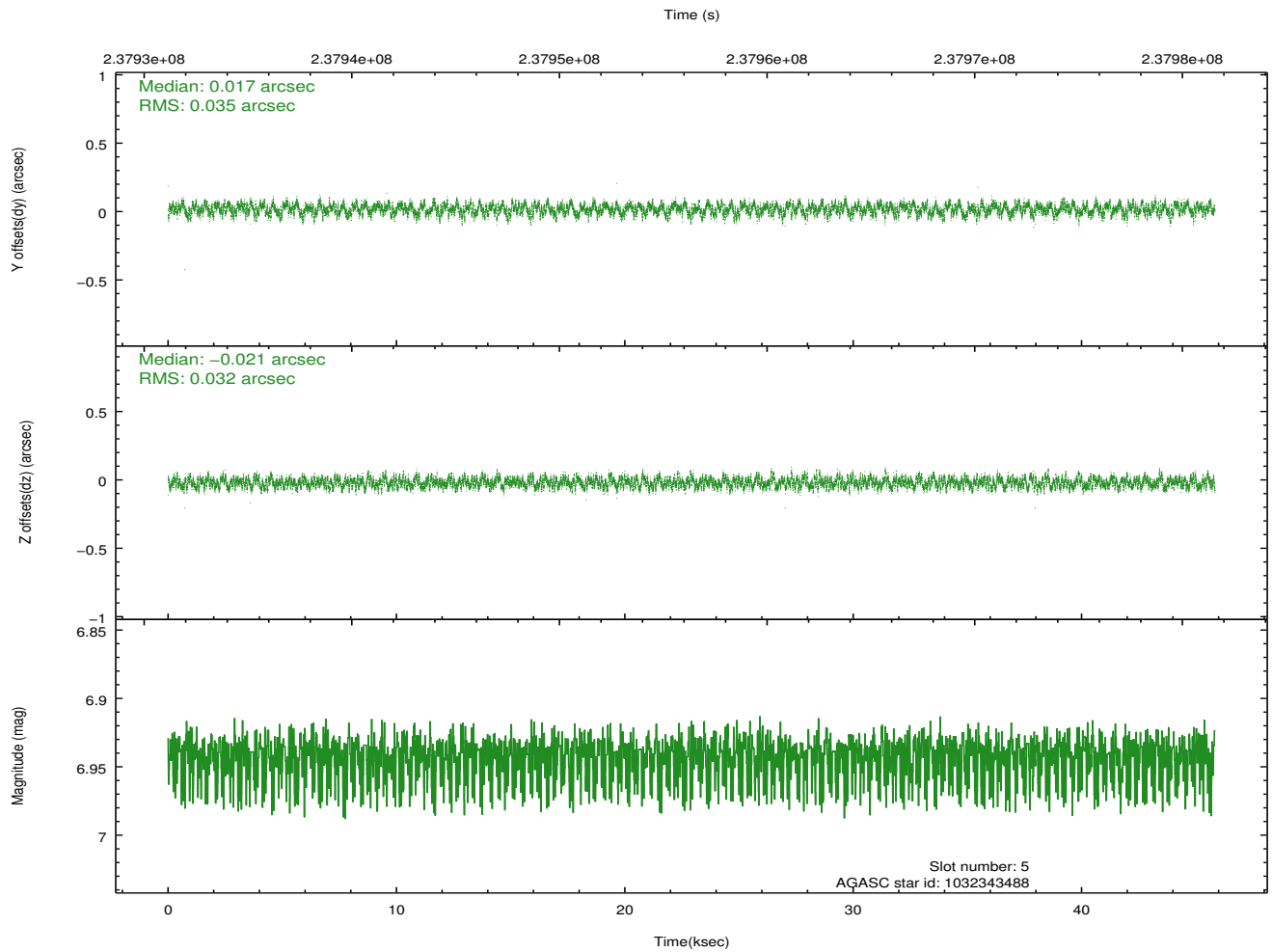
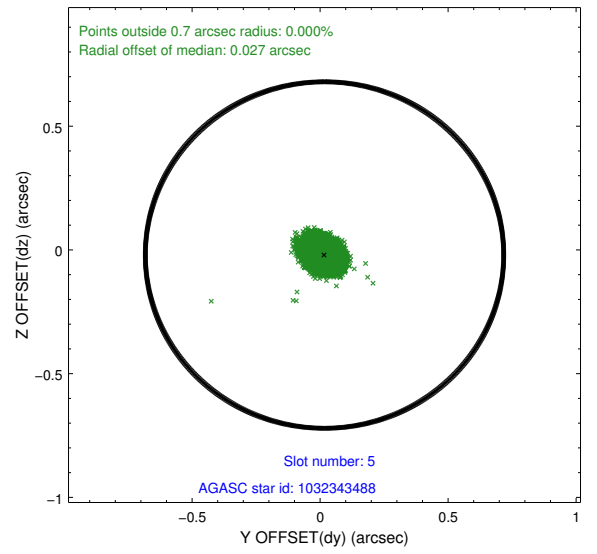
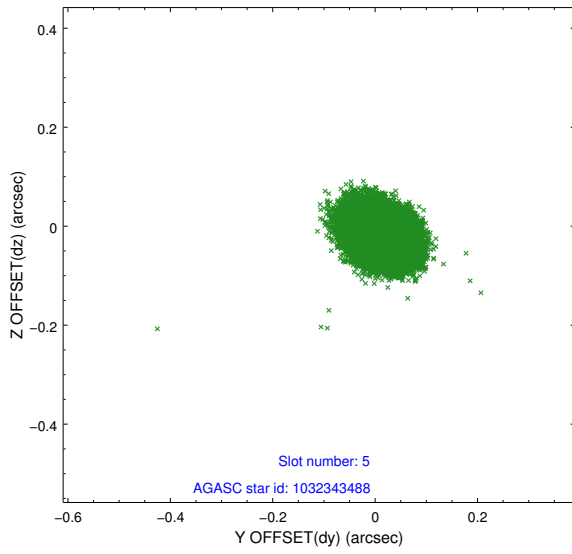
### 2.4.1 Slot 3



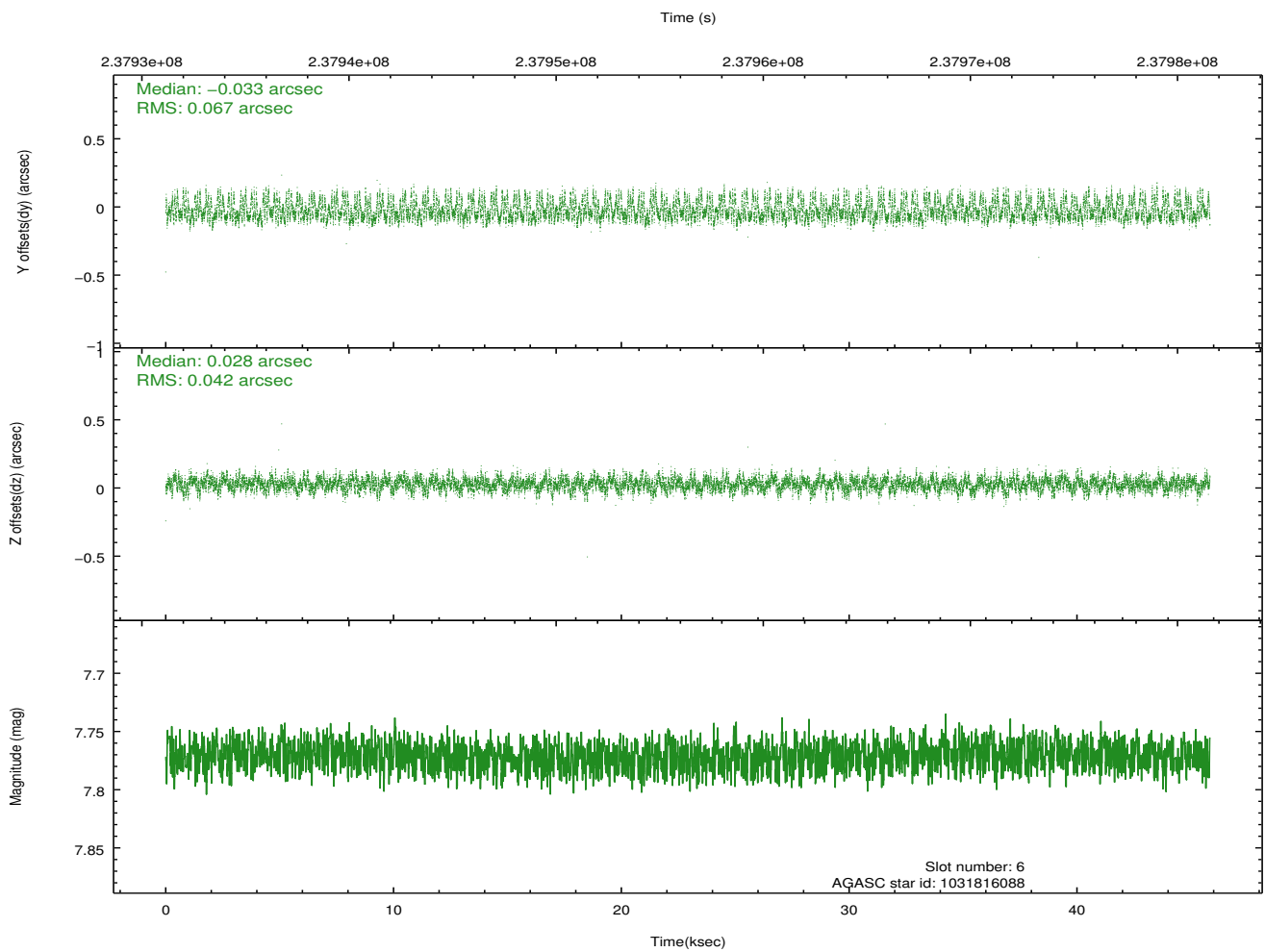
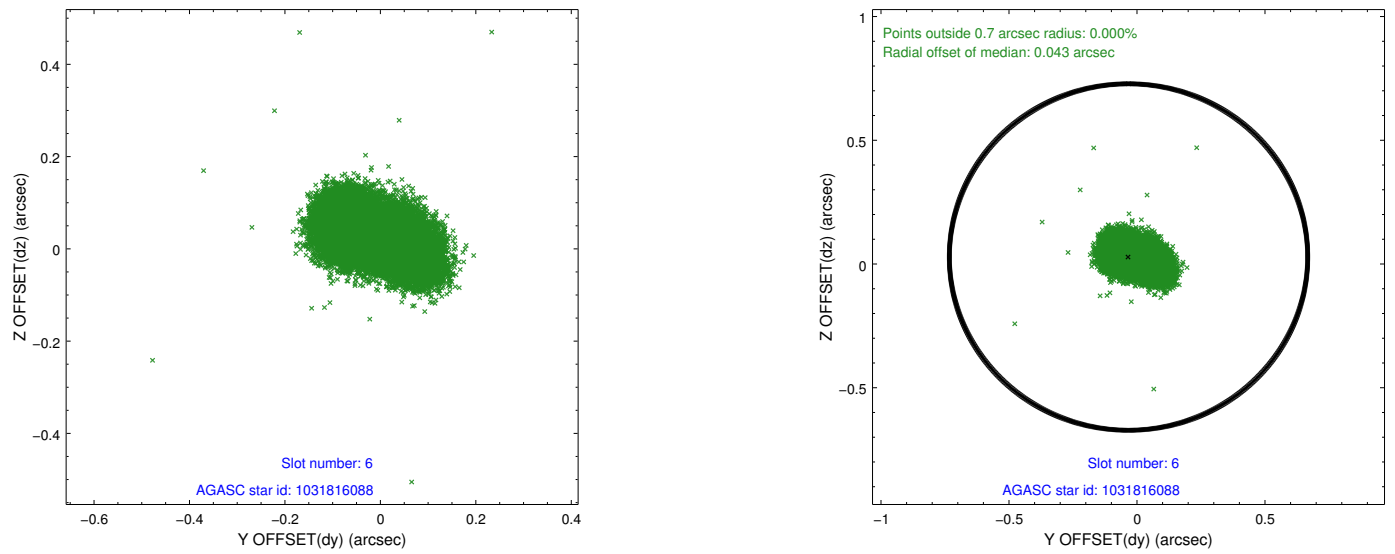
## 2.4.2 Slot 4



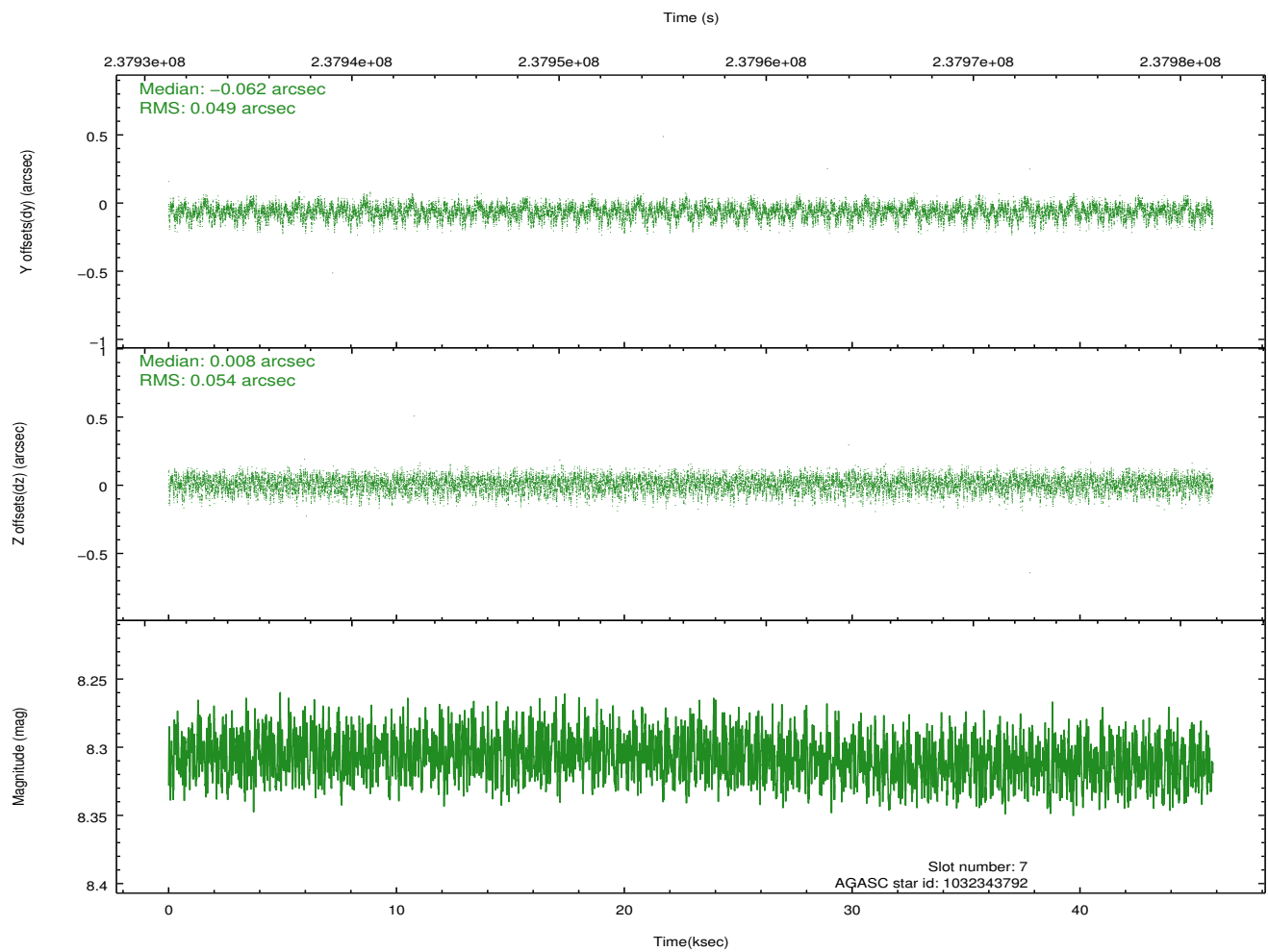
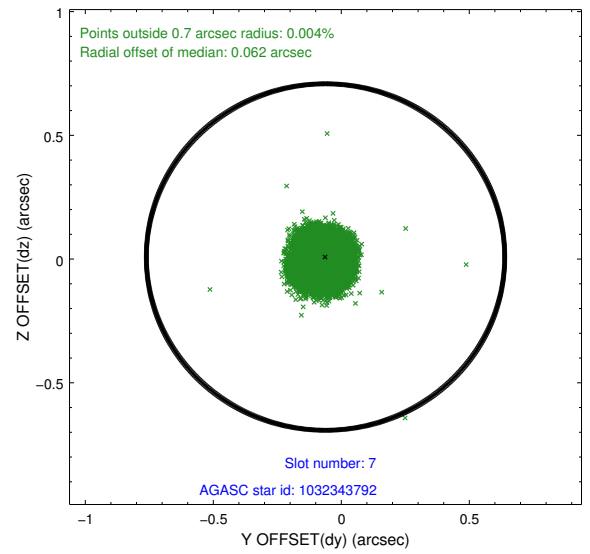
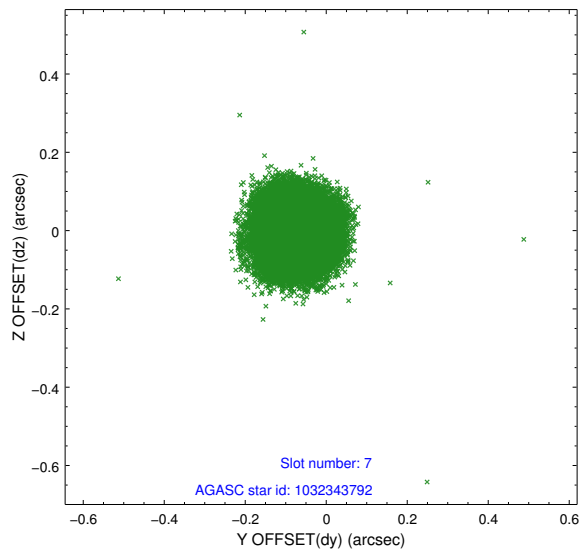
### 2.4.3 Slot 5



## 2.4.4 Slot 6

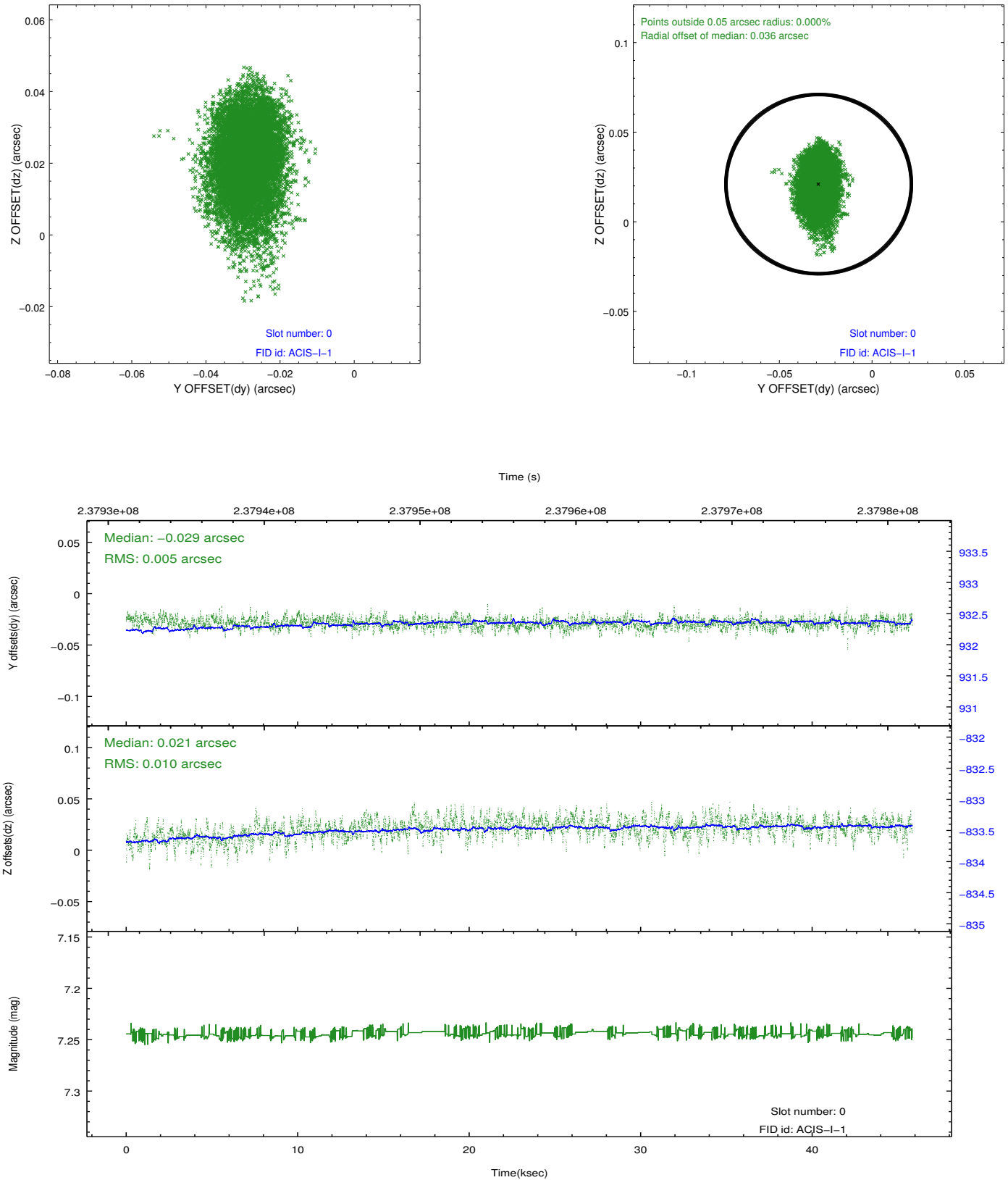


## 2.4.5 Slot 7

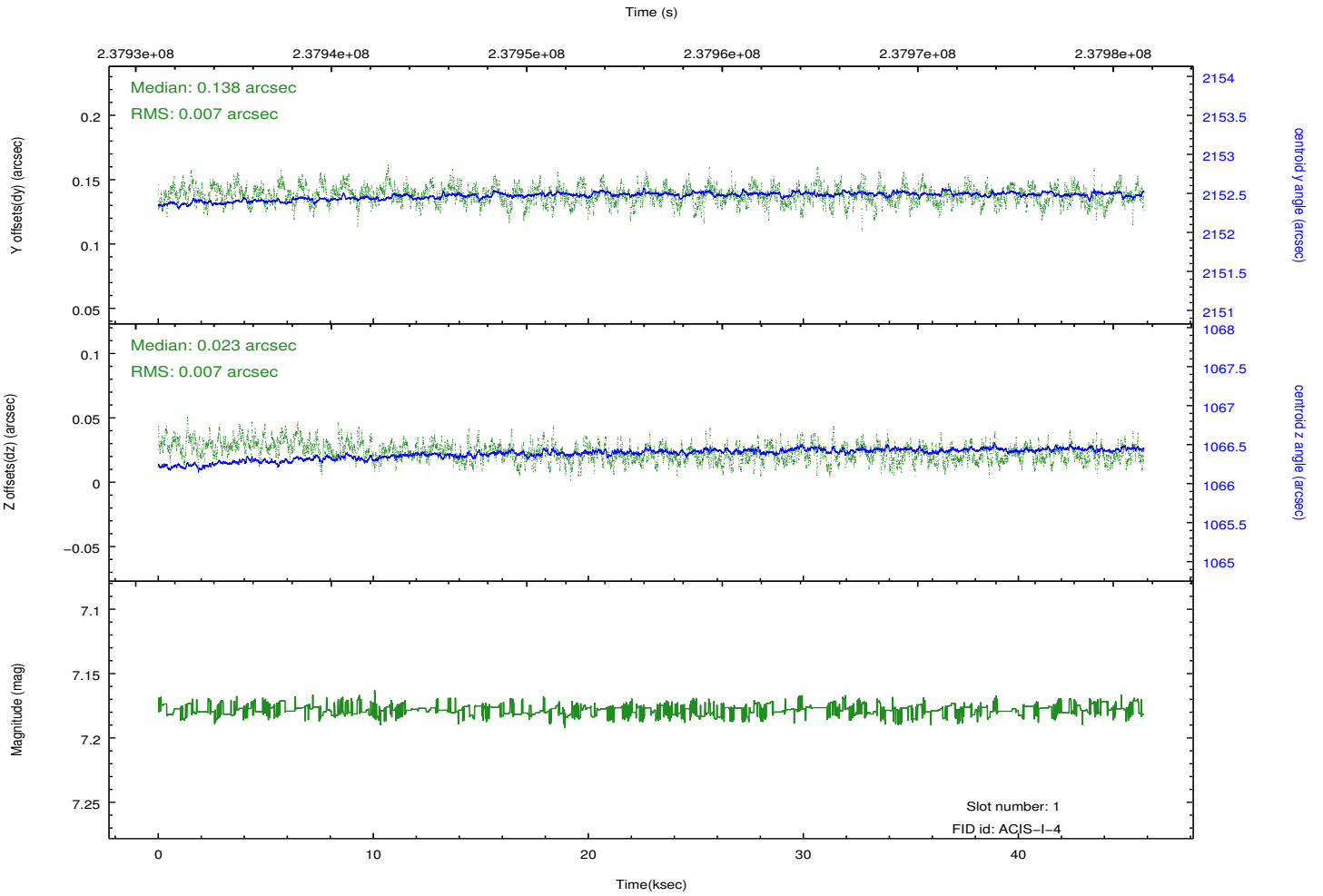
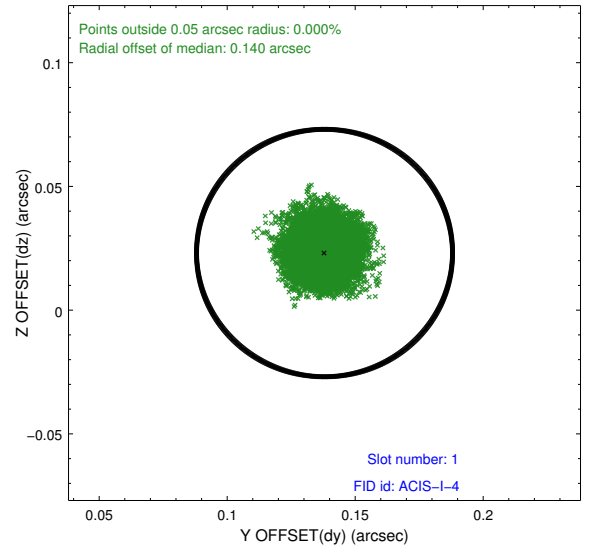
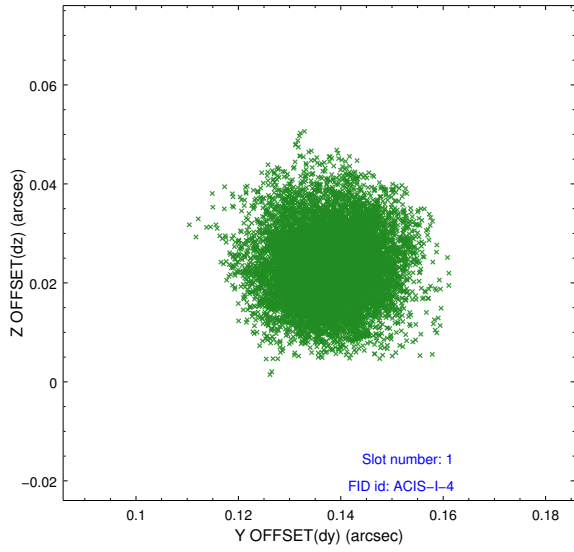


## 2.5 FID Slots

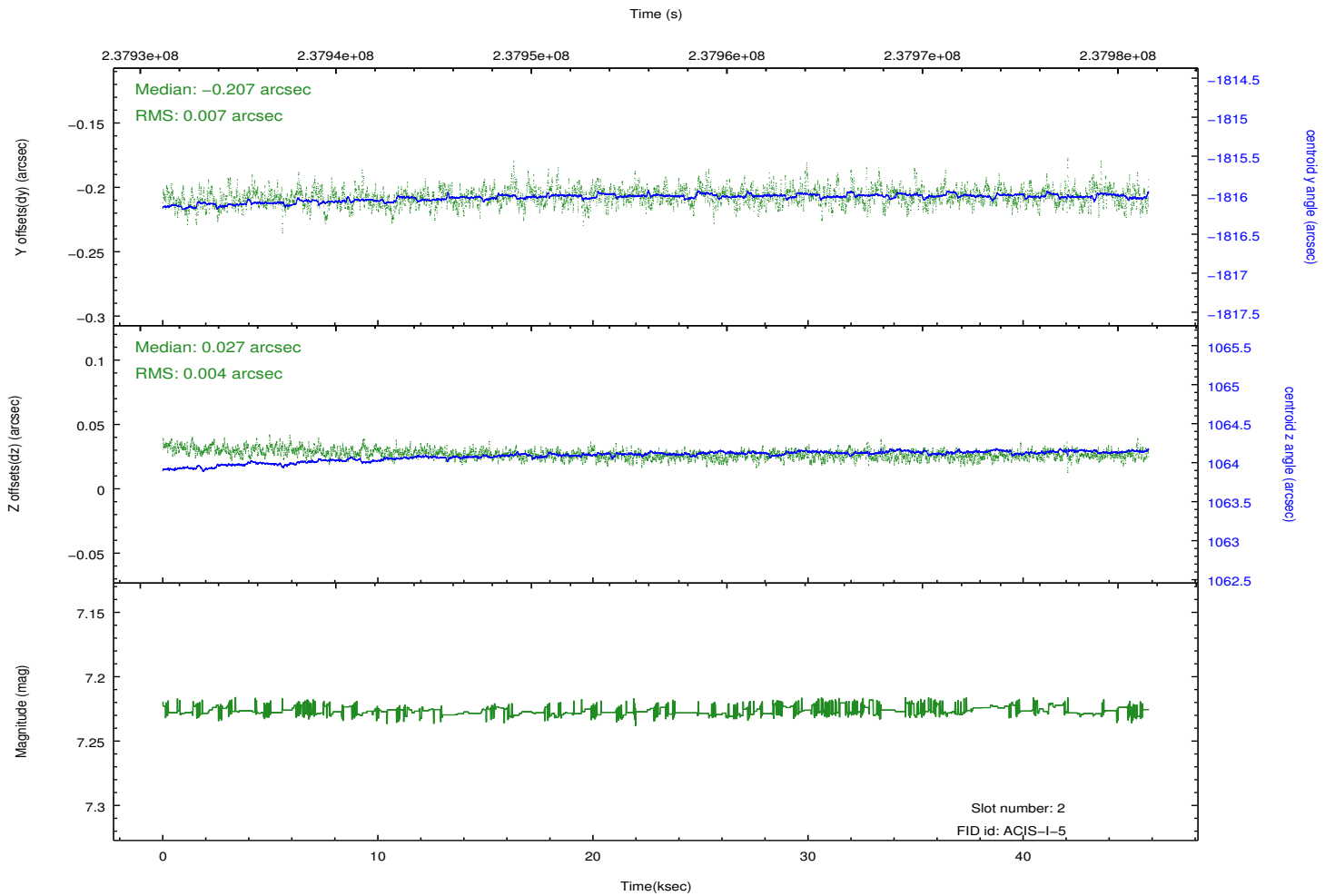
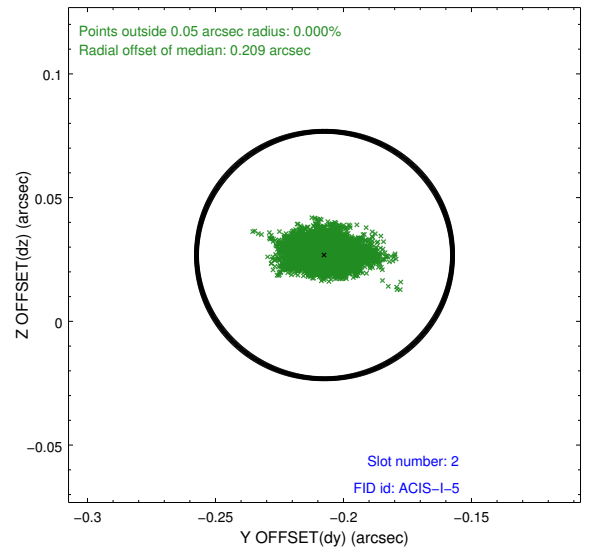
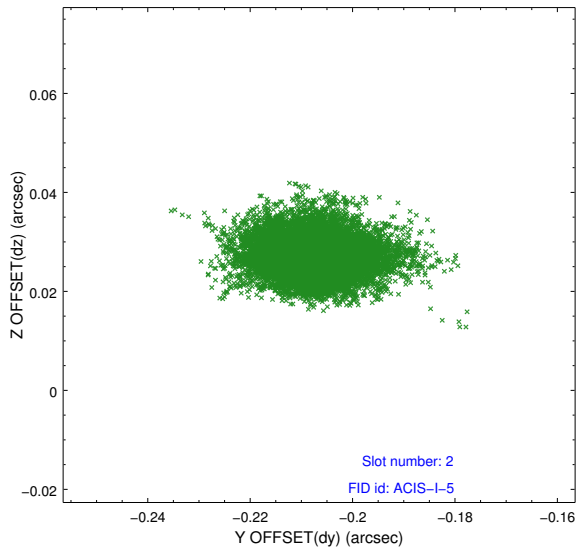
### 2.5.1 Slot 0



## 2.5.2 Slot 1



### 2.5.3 Slot 2



# A Summary

## A.1 Status

V&V Scientist	Jen Lauer
V&V Date (YYYY-MM-DD)	2013.01.23
V&V Edition	1
V&V Disposition and Status	OK
V&V Charge Time	44.95355

## A.2 Comments