

V&V Reference Report

L2 ASCDS Version : 8.5.1.1

Observation 6361 - L2 Version 3
Chandra X-Ray Center

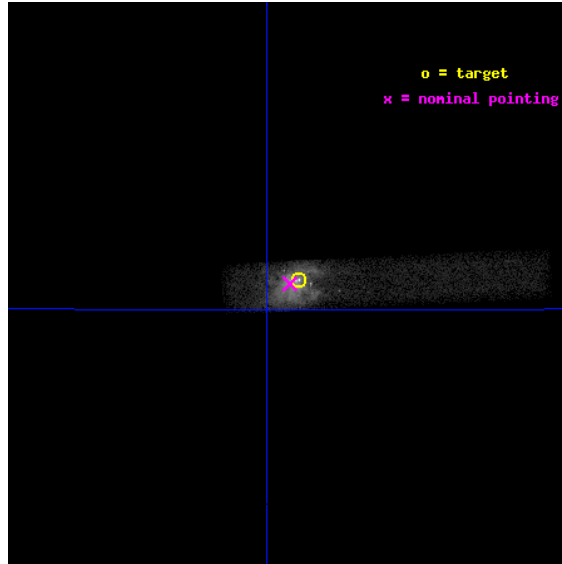
L2 Processing Date : Dec 27 2012

Contents

1	Front	2
2	OBI	3
2.1	OBI	3
2.1.1	Images	3
2.1.2	Parameters	4
2.1.3	Events	4
2.2	Compared Parameters	5
2.3	Aspect	6
2.4	Star Slots	9
2.4.1	Slot 3	9
2.4.2	Slot 4	10
2.4.3	Slot 5	11
2.4.4	Slot 6	12
2.4.5	Slot 7	13
2.5	FID Slots	14
2.5.1	Slot 0	14
2.5.2	Slot 1	15
2.5.3	Slot 2	16
A	Summary	17
A.1	Status	17
A.2	Comments	17

1 Front

seq_num	701067	Sequence number
obs_id	6361	Observation id
title	Chandra and RXTE Observations of the Ultraluminous QPO Source in M82	
observer	Dr. Tod Strohmayer	Principal investigator
object	CXO M82 J095550.2+694047	Source name
dtcycle	0	
cycle	P	events from which exps? Prim/Second/Both
ra_targ	148.959167	Observer's specified target RA [deg]
dec_targ	69.679722	Observer's specified target Dec [deg]
ra_nom	148.970589439	Nominal RA [deg]
dec_nom	69.677862285517	Nominal Dec [deg]
roll_nom	357.24592096044	Nominal Roll [deg]
revision	3	Processing version of data
ontime	19240.400286674	Sum of GTIs [s]
livetime	17450.027468415	Livetime [s]
ontime7	19240.400286674	Sum of GTIs [s]
l2events	71828	Number of level 2 events

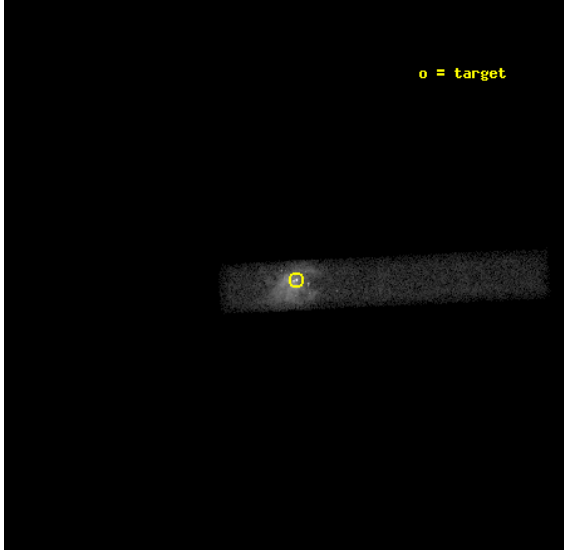


2 OBI

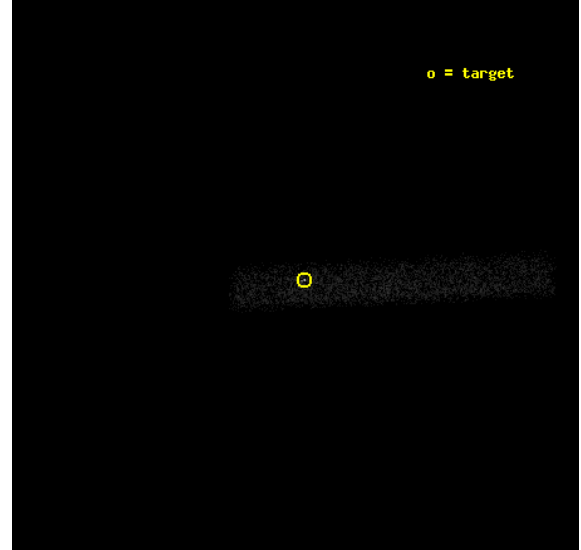
2.1 OBI

2.1.1 Images

Level 1 Image



Level 1 Bad Events



2.1.2 Parameters

obi_num	0	Obi number	sched_exp_time	19104.362000	[s] Scheduled observation exposure time
ascdsver	8.5.1.1	Processing system revision	ontime	19240.400286674	Sum of GTIs [s]
caldbver	4.5.5	 	ontime7	19240.400286674	Sum of GTIs [s]
date	2012-12-27T21:58:09	Date and time of file creation	l1events	92737	Number of level 1 events
revision	3	Processing version of data			

2.1.3 Events

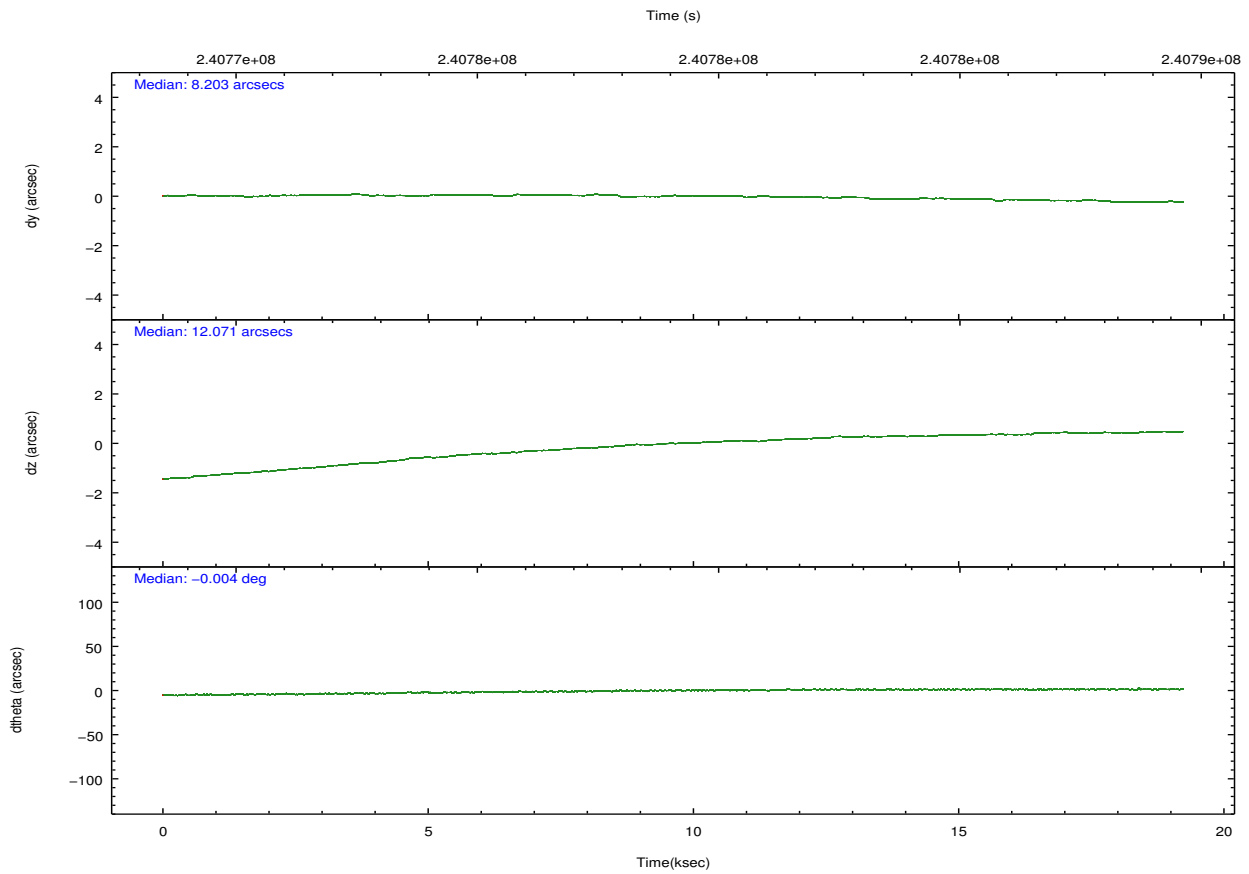
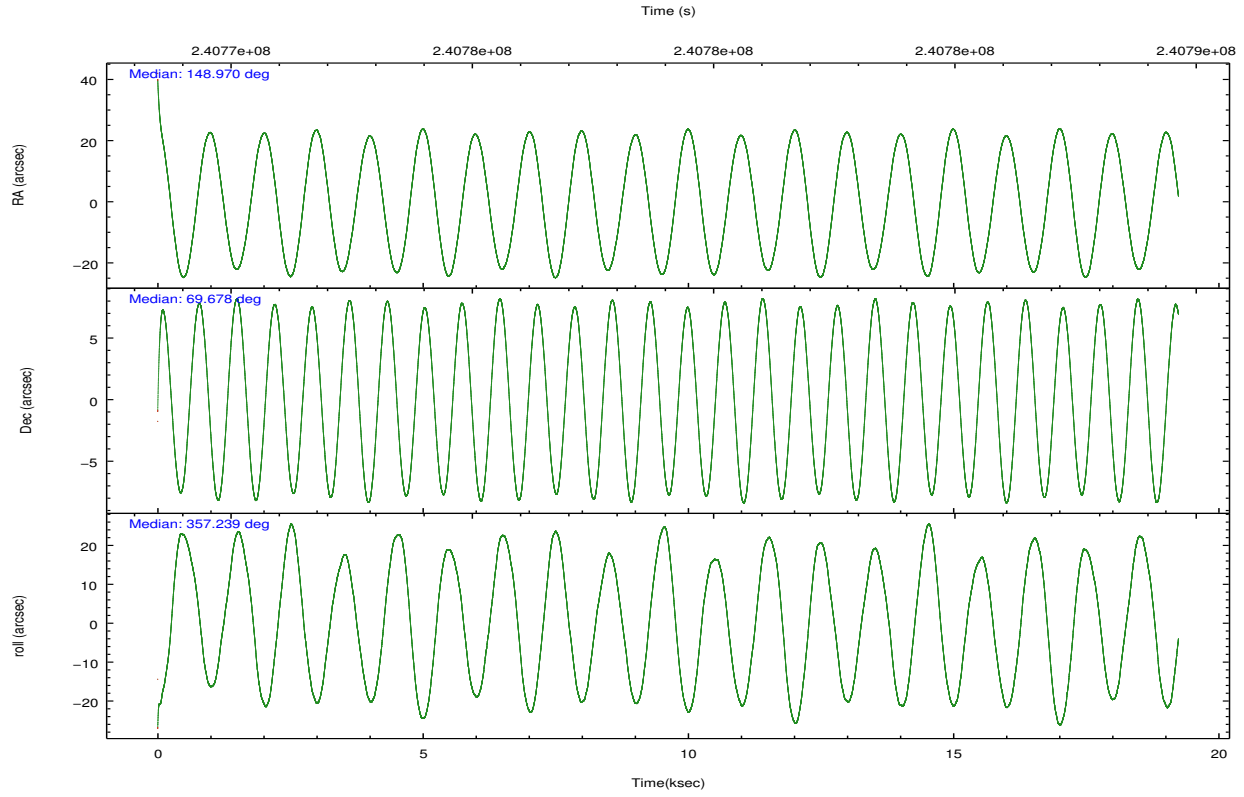
	ccd 7
level 1 events	92737
rejected events	19929
rejected %	21%

	ccd 7
grade 0 events	15341
	16%
grade 1 events	147
	0%
grade 2 events	19568
	21%
grade 3 events	7909
	8%
grade 4 events	8063
	8%
grade 5 events	2975
	3%
grade 6 events	23380
	25%
grade 7 events	15354
	16%

2.2 Compared Parameters

Parameter	Planned	Actual	Parameter	Planned	Actual
Instrument	ACIS	ACIS	Obspar format version number	7	7
Detector	ACIS-7	ACIS-7	Obspar file type	PREDICTED	ACTUAL
Grating	NONE	NONE	Obspar update status	NONE	UPDATED
Data mode	GRADED	GRADED	Number of optional ACIS chips dropped	0	0
Observation mode	POINTING	POINTING	On-chip summing requested	N	N
[deg] Pointing RA	148.901326	148.9705894389972	Subarray requested	CUSTOM	1/8
[deg] Pointing Dec	69.665040	69.67786228551697	Subarray start row	449	449
[deg] Pointing Roll	357.154243	357.2459209604366	Subarray row count	128	128
[mm] SIM focus pos	-0.684267	-0.6828225247311905	Alternating exposures requested	N	N
[mm] SIM defocus	0	0.001444936568705701	[s] Primary exposure time	0.000000	0.4
[mm] SIM translation stage pos	-190.132523	-190.1400660498719			
[mm] SIM translation stage offset	0	0.00754346686406393			
[s] Observation start time (MET)	240769574.184000	240767756.52699			
Observation start date	2005-08-18T16:25:10	2005-08-18T15:55:56			
[s] Observation end time (MET)	240788678.184000	240788896.12796			
Observation end date	2005-08-18T21:43:34	2005-08-18T21:48:16			
Read mode	TIMED	TIMED			

2.3 Aspect

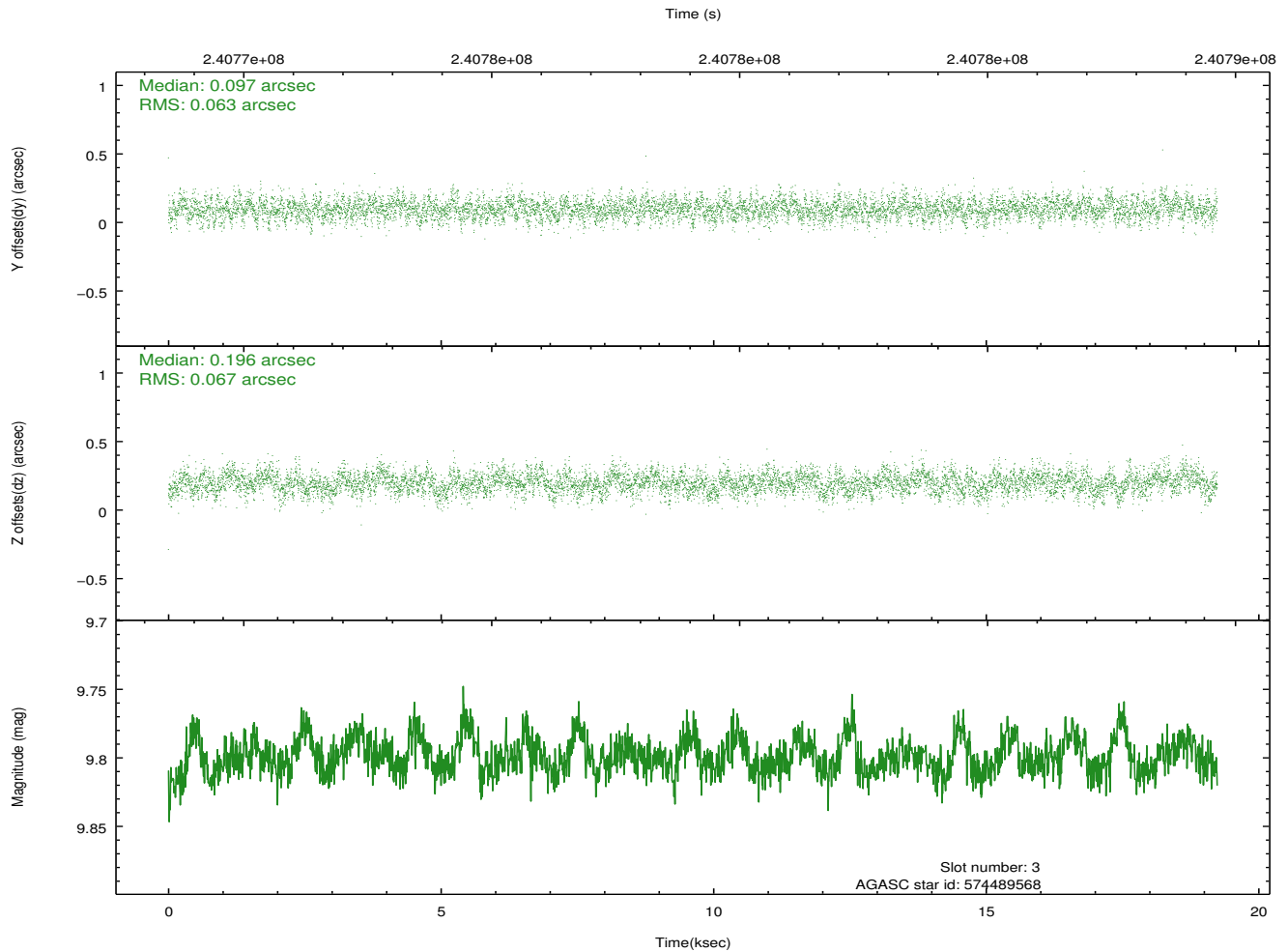
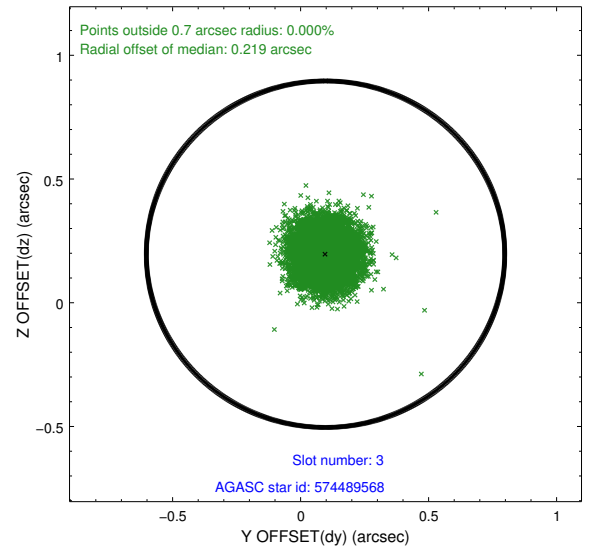
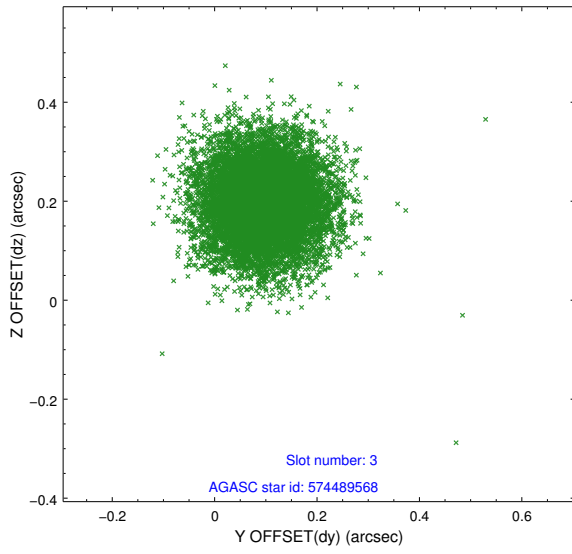


Slot Statistics

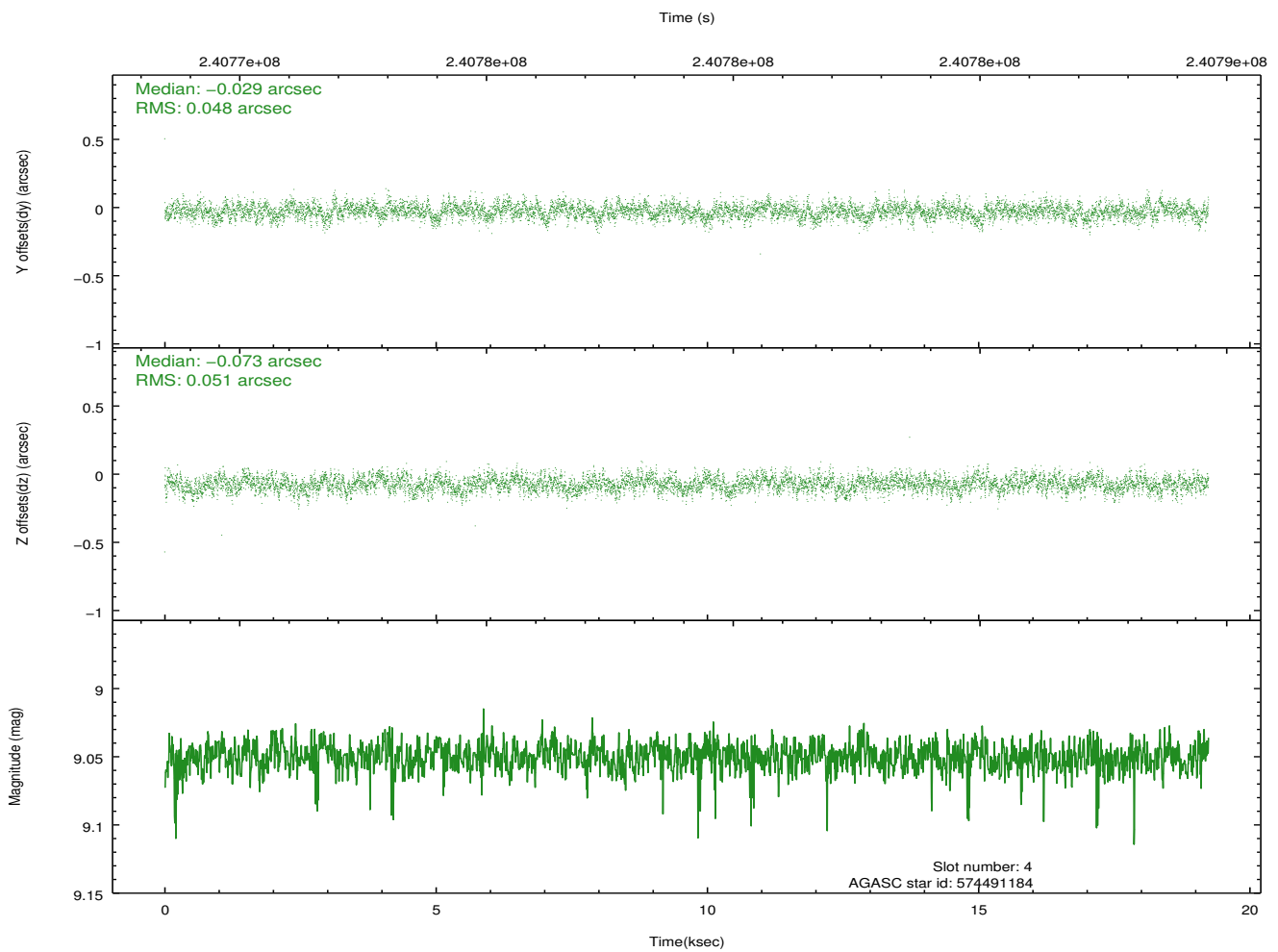
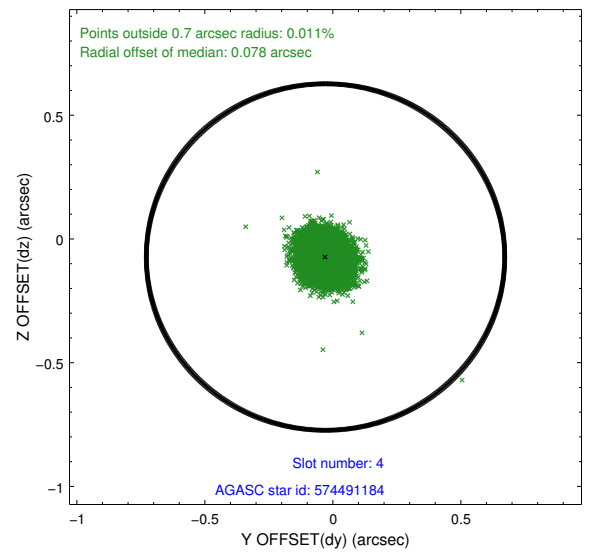
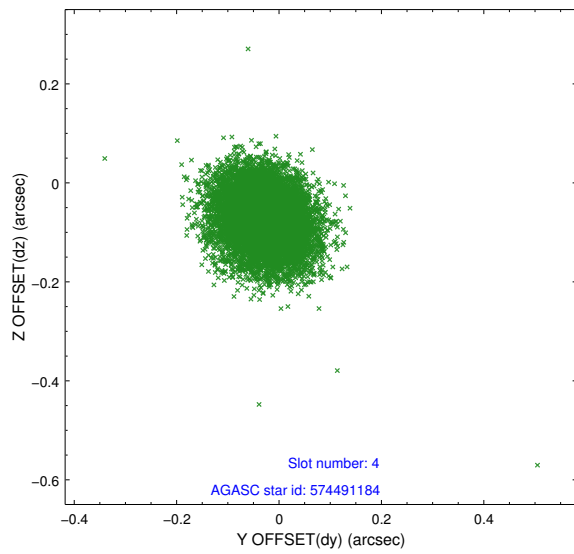
slot	status	id	mag	n_pts	med_dy	med_dz	dr1	dr2	ra	dec	mean_y	mean_z
0	FID	ACIS-S-2	7.10	4694	-0.015	-0.027	0.016	0.029	0.000000	0.000000	-760.96	-1733.21
1	FID	ACIS-S-4	7.20	4694	0.105	0.015	0.014	0.024	0.000000	0.000000	2152.34	175.12
2	FID	ACIS-S-5	7.23	4694	-0.118	0.022	0.014	0.023	0.000000	0.000000	-1813.65	169.01
3	GUIDE	574489568	9.80	9381	0.097	0.196	0.098	0.159	147.223974	69.438157	-2078.37	-892.01
4	GUIDE	574491184	9.05	9363	-0.029	-0.073	0.074	0.120	148.582453	69.768699	-415.08	353.89
5	GUIDE	574491280	9.36	9381	0.016	0.067	0.101	0.159	148.611567	69.450135	-327.67	-790.48
6	GUIDE	574491872	9.25	9377	0.038	-0.085	0.085	0.140	147.207613	69.765453	-2125.26	283.36
7	GUIDE	574886464	9.79	9381	-0.124	-0.106	0.166	0.257	149.898674	70.203982	1117.35	2008.24

2.4 Star Slots

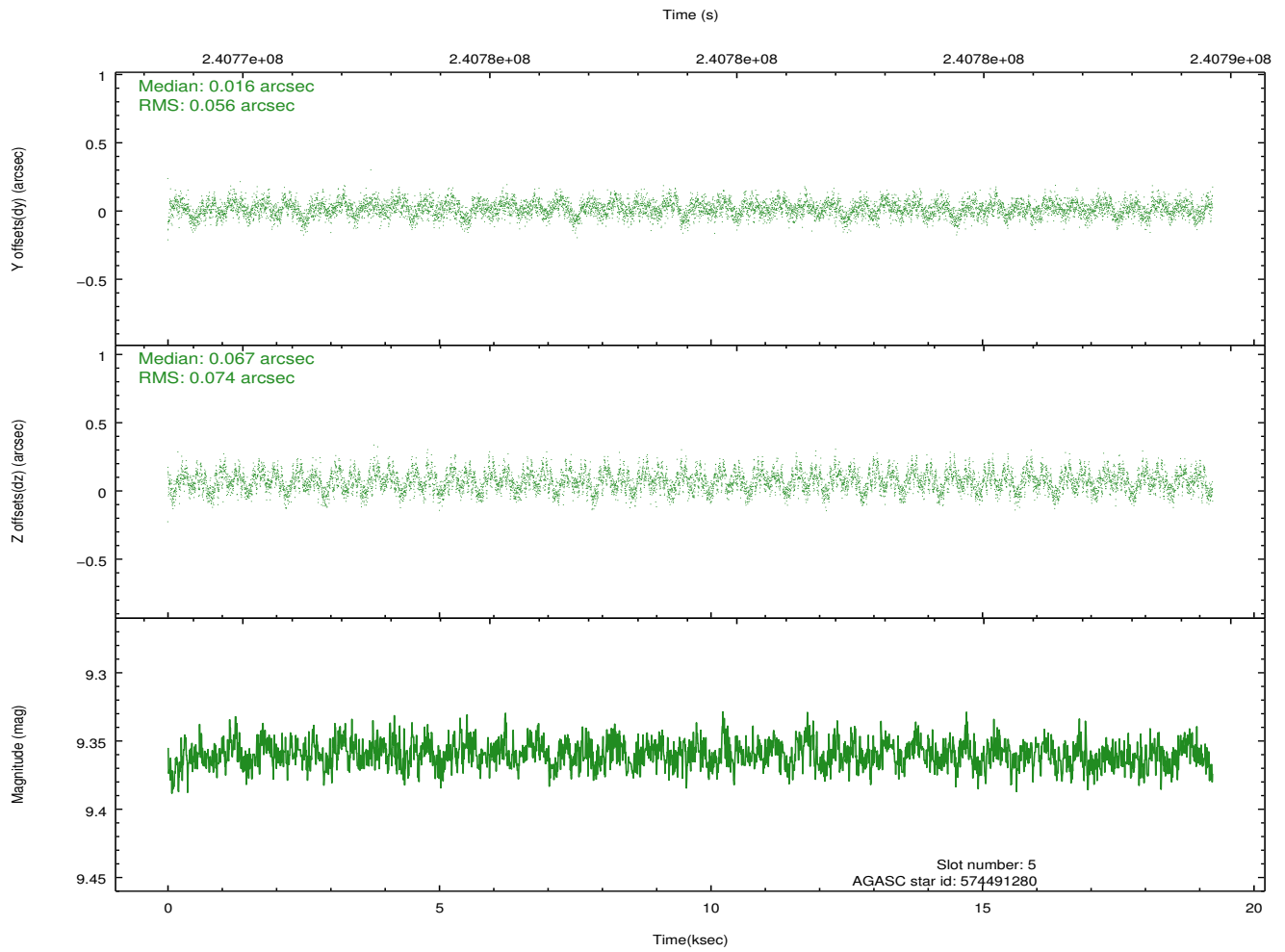
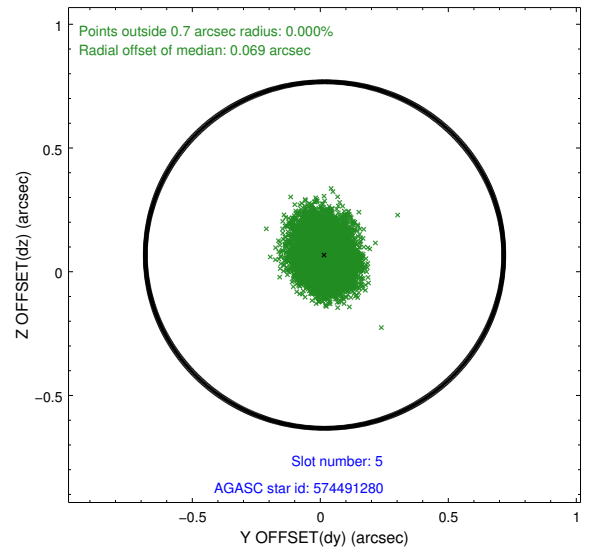
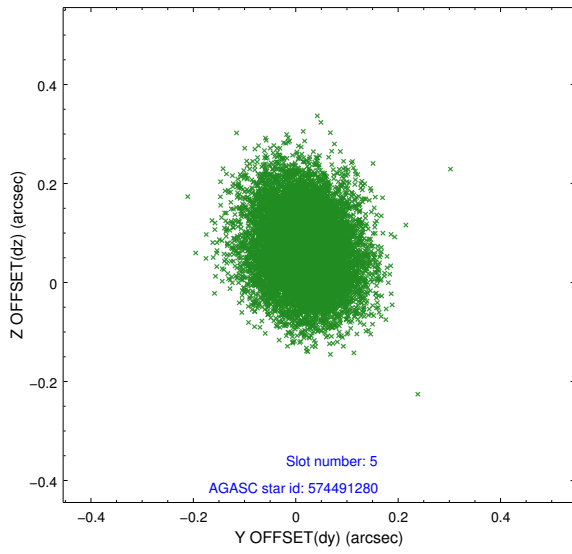
2.4.1 Slot 3



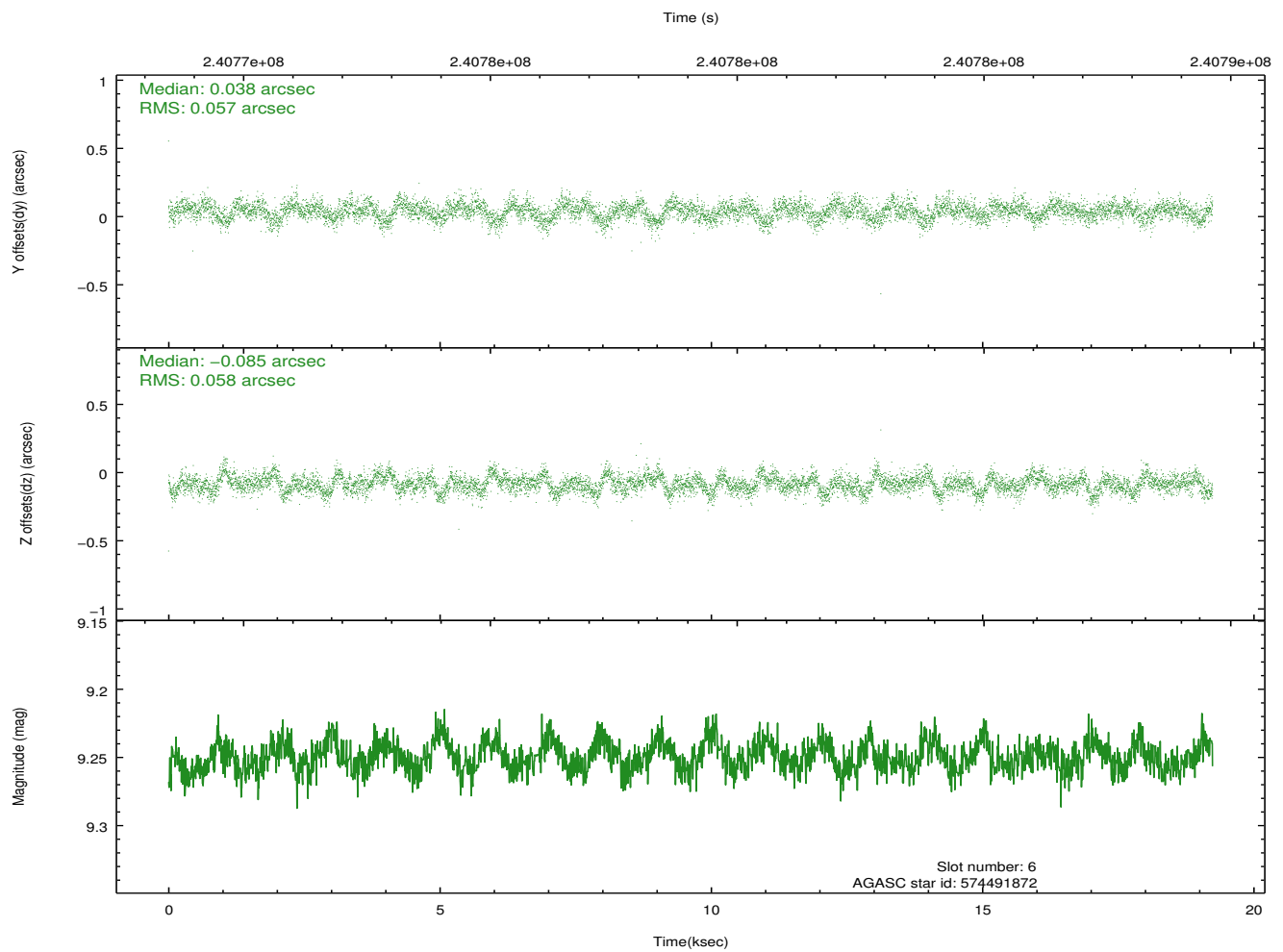
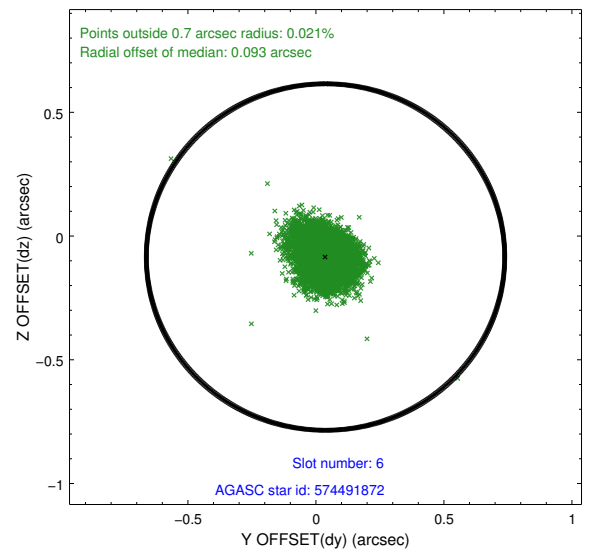
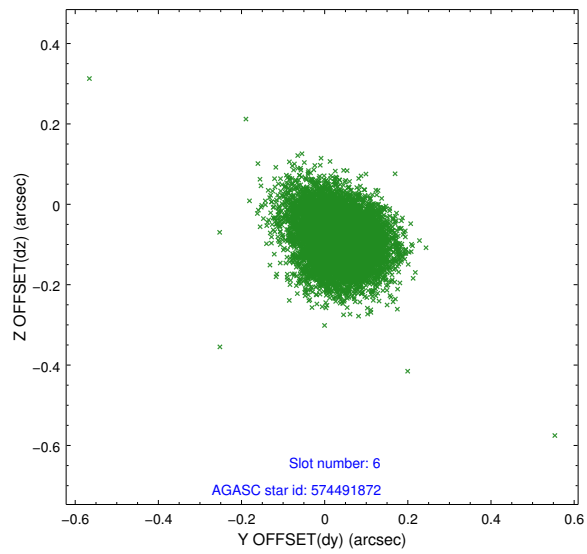
2.4.2 Slot 4



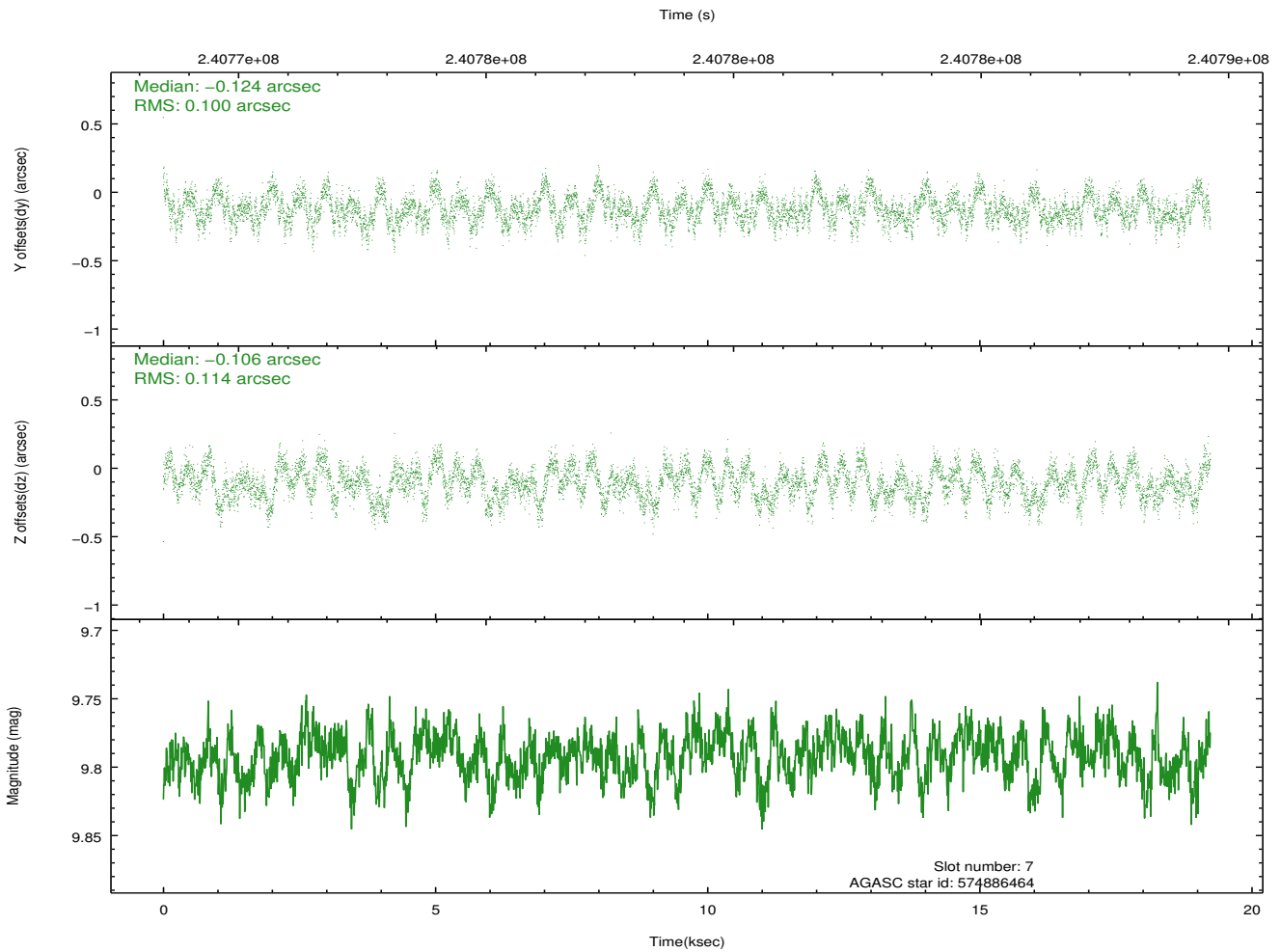
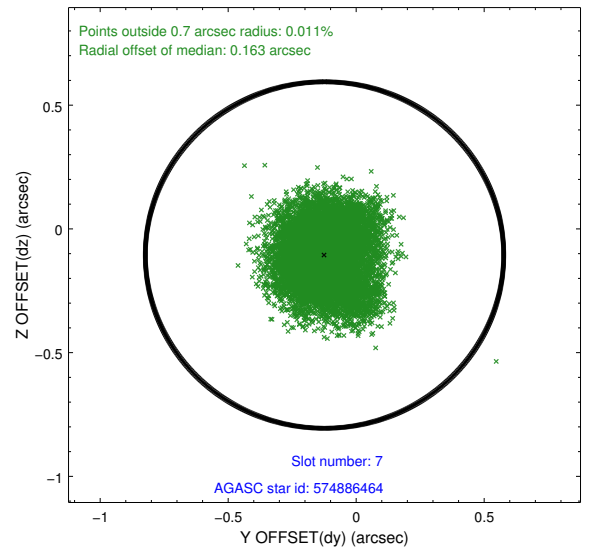
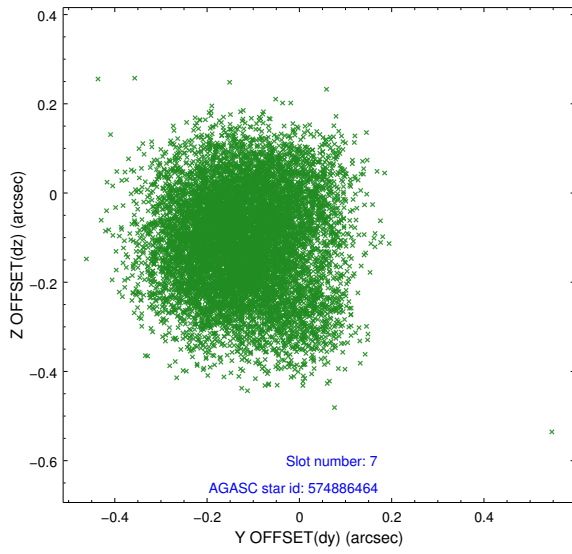
2.4.3 Slot 5



2.4.4 Slot 6

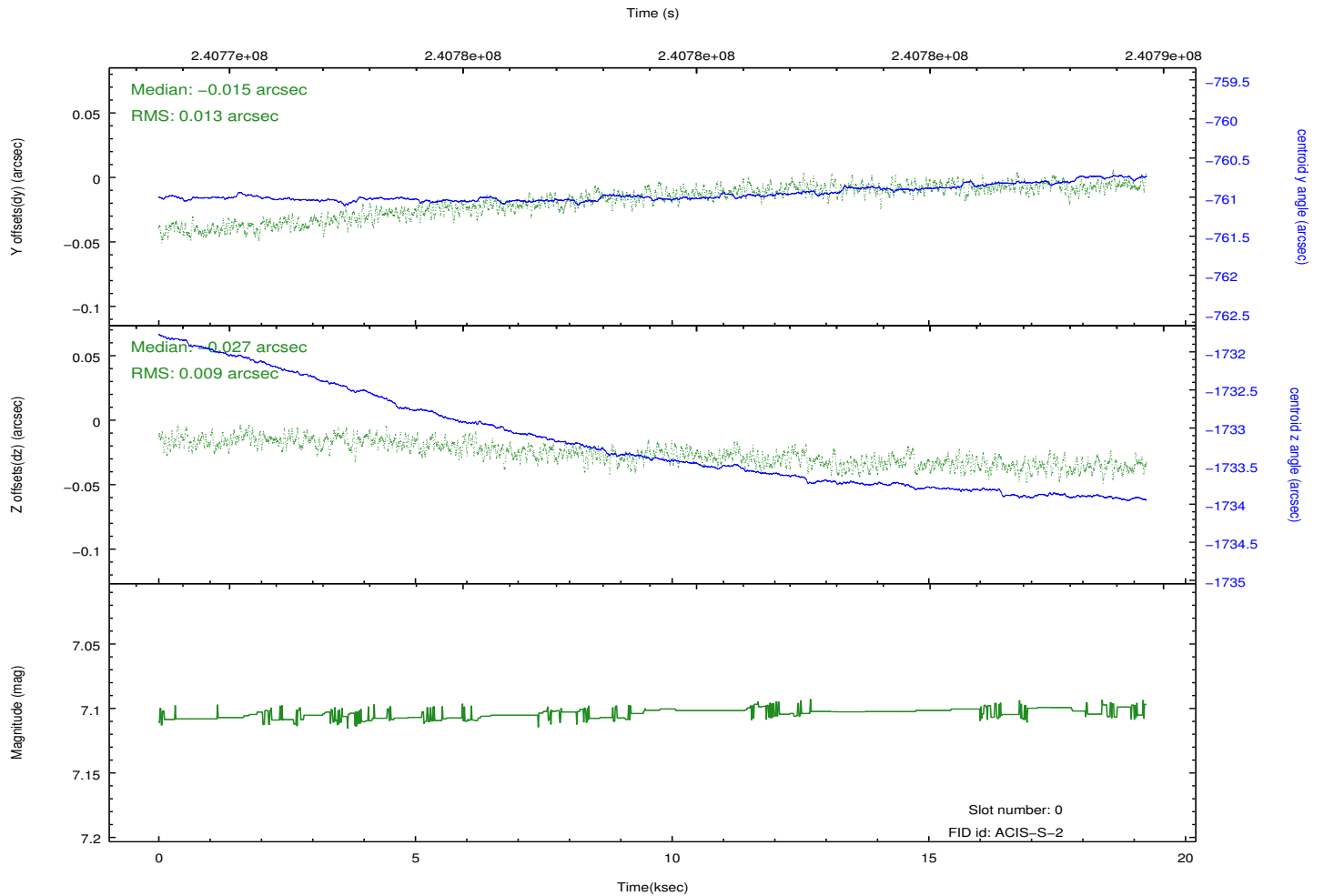
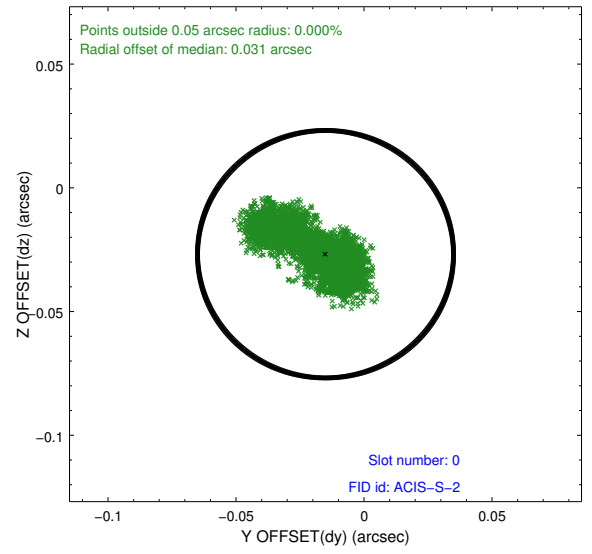
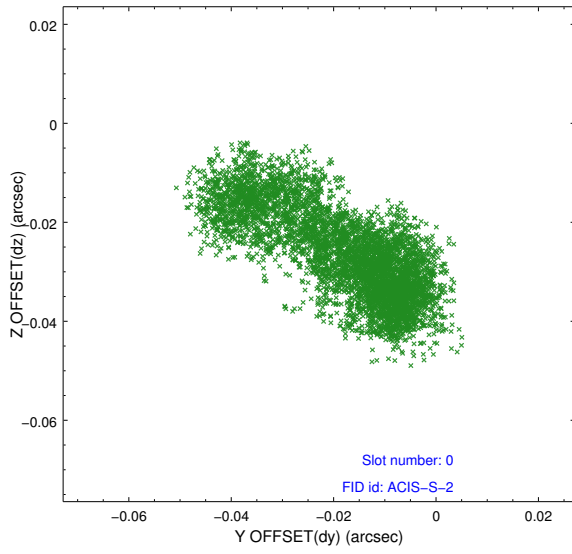


2.4.5 Slot 7

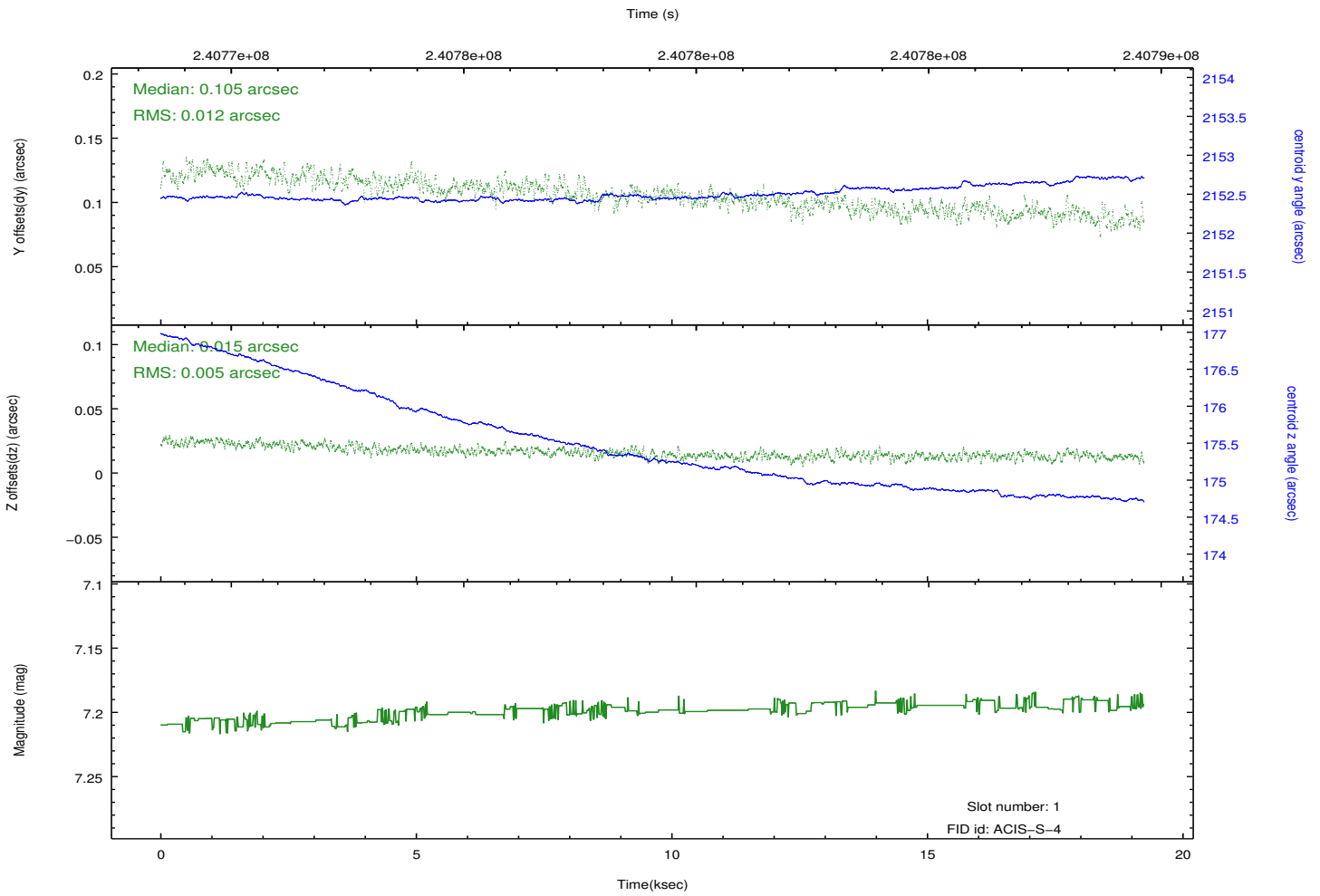
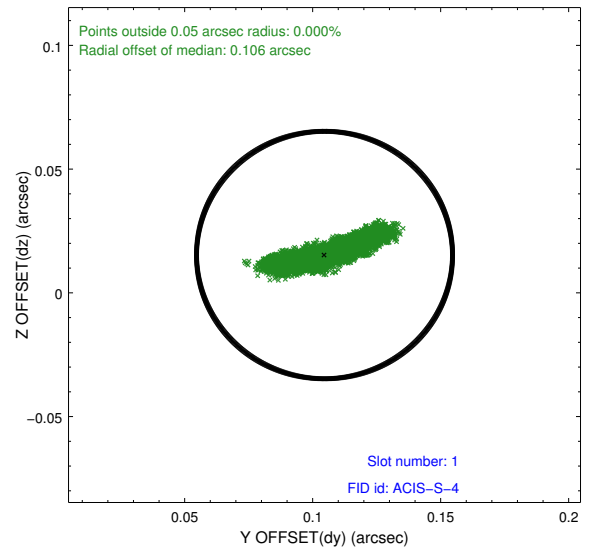
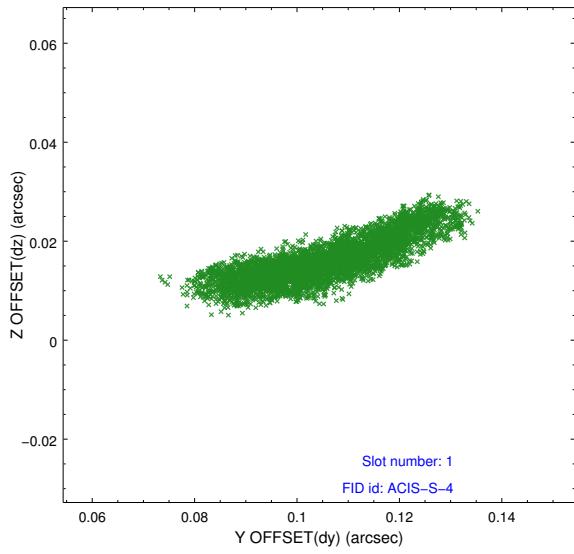


2.5 FID Slots

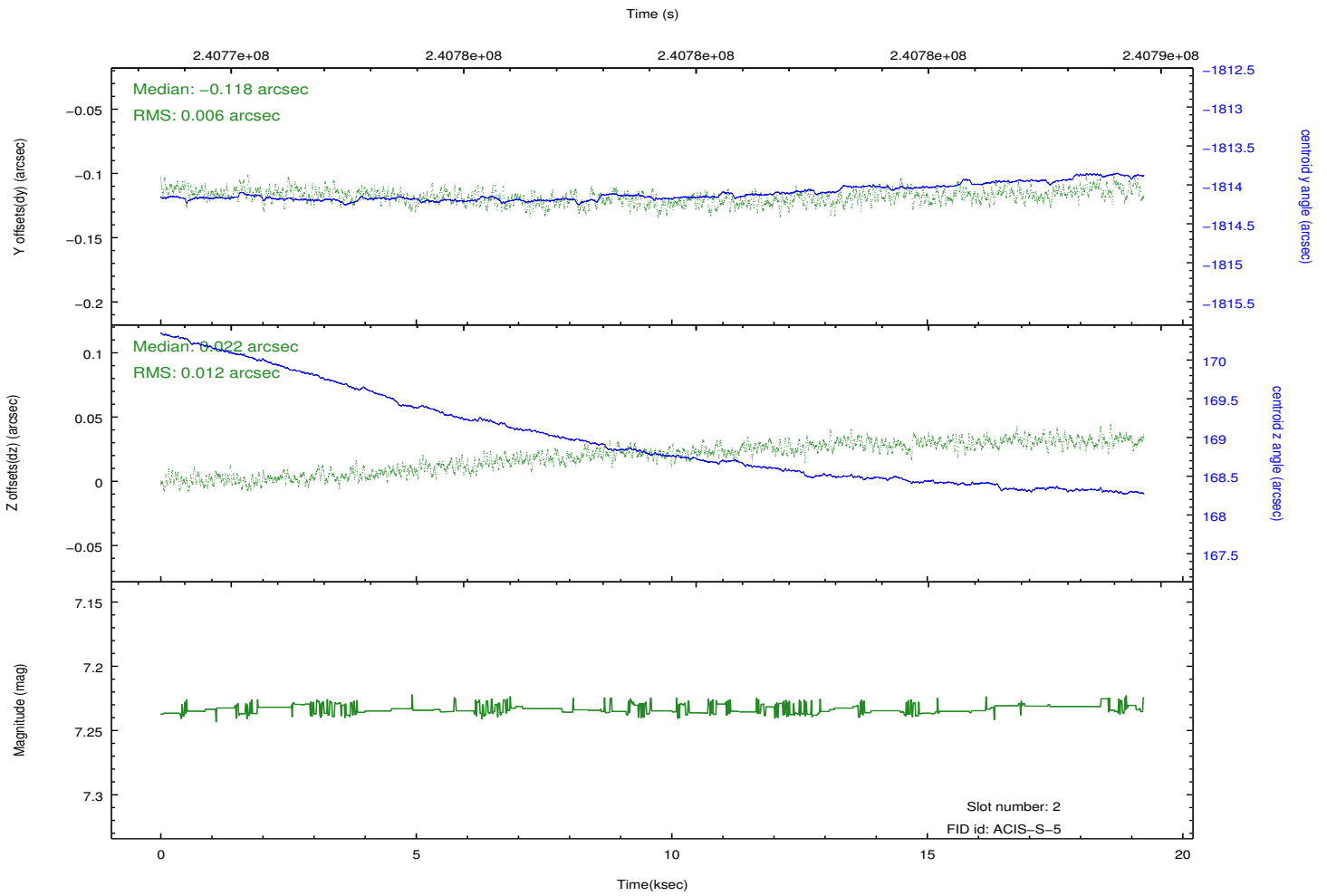
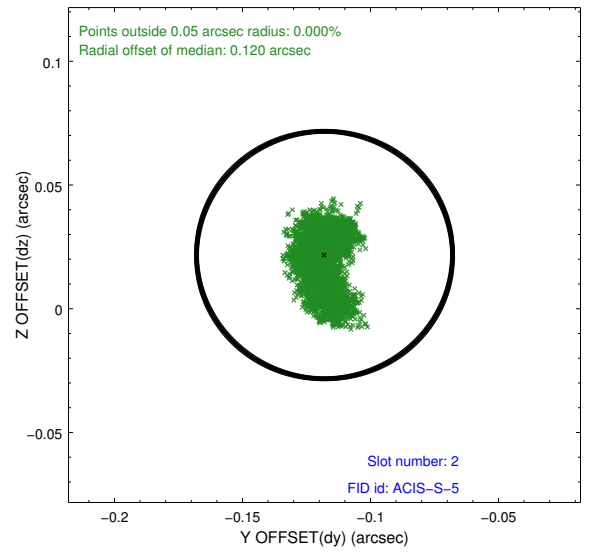
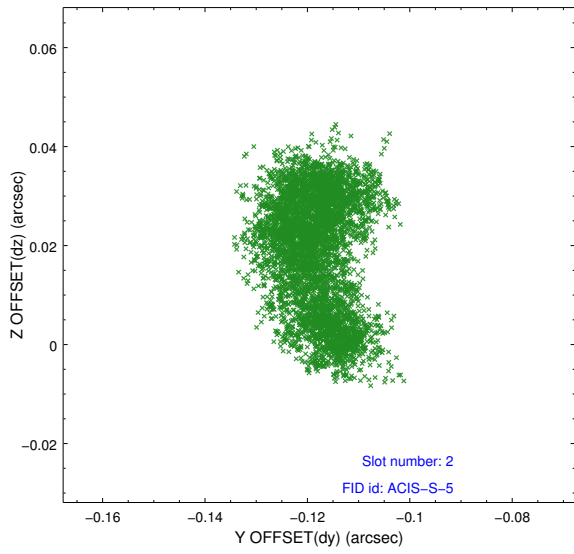
2.5.1 Slot 0



2.5.2 Slot 1



2.5.3 Slot 2



A Summary

A.1 Status

V&V Scientist	Jen Lauer
V&V Date (YYYY-MM-DD)	2013.01.24
V&V Edition	1
V&V Disposition and Status	OK
V&V Charge Time	19.2404

A.2 Comments

Joint Proposal: RXTE