

V&V Reference Report

L2 ASCDS Version : 8.4.3

Observation 6371 - L2 Version 2
Chandra X-Ray Center

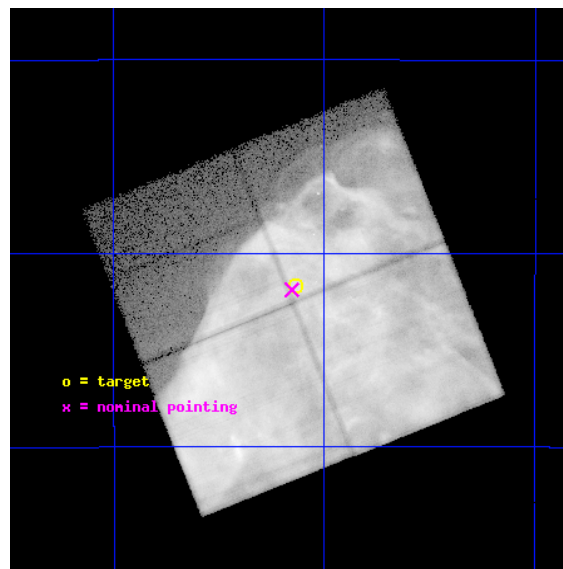
L2 Processing Date : Mar 25 2012

Contents

1	Front	2
2	OBI	3
2.1	OBI	3
2.1.1	Images	3
2.1.2	Bias	3
2.1.3	Parameters	4
2.1.4	Events	4
2.2	Compared Parameters	5
2.3	Aspect	6
2.4	Star Slots	9
2.4.1	Slot 3	9
2.4.2	Slot 4	10
2.4.3	Slot 5	11
2.4.4	Slot 6	12
2.4.5	Slot 7	13
2.5	FID Slots	14
2.5.1	Slot 0	14
2.5.2	Slot 1	15
2.5.3	Slot 2	16
A	Summary	17
A.1	Status	17
A.2	Comments	17

1 Front

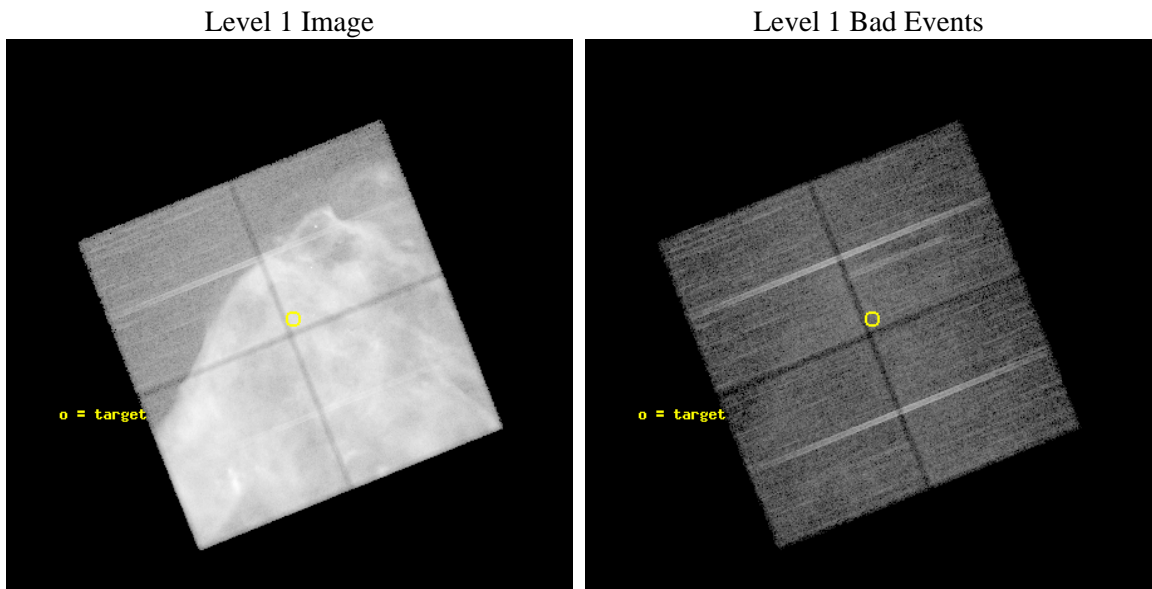
seq_num	500553	Sequence number
obs_id	6371	Observation id
title	Large-Scale Shock Interactions in Puppis A	Proposal title
observer	Dr Una Hwang	Principal investigator
object	Puppis A NE Shock Front	Source name
dtcycle	0	
cycle	P	events from which exps? Prim/Second/Both
ra_targ	125.784	Observer's specified target RA [deg]
dec_targ	-42.694833	Observer's specified target Dec [deg]
ra_nom	125.78849136299	Nominal RA [deg]
dec_nom	-42.698098254594	Nominal Dec [deg]
roll_nom	338.23763349314	Nominal Roll [deg]
revision	2	Processing version of data
ontime	28651.734503597	Sum of GTIs [s]
livetime	28277.378499207	Livetime [s]
ontime0	23758.076928973	Sum of GTIs [s]
ontime1	26540.991188377	Sum of GTIs [s]
ontime2	29223.393541992	Sum of GTIs [s]
ontime3	28651.734503597	Sum of GTIs [s]
l2events	4454054	Number of level 2 events



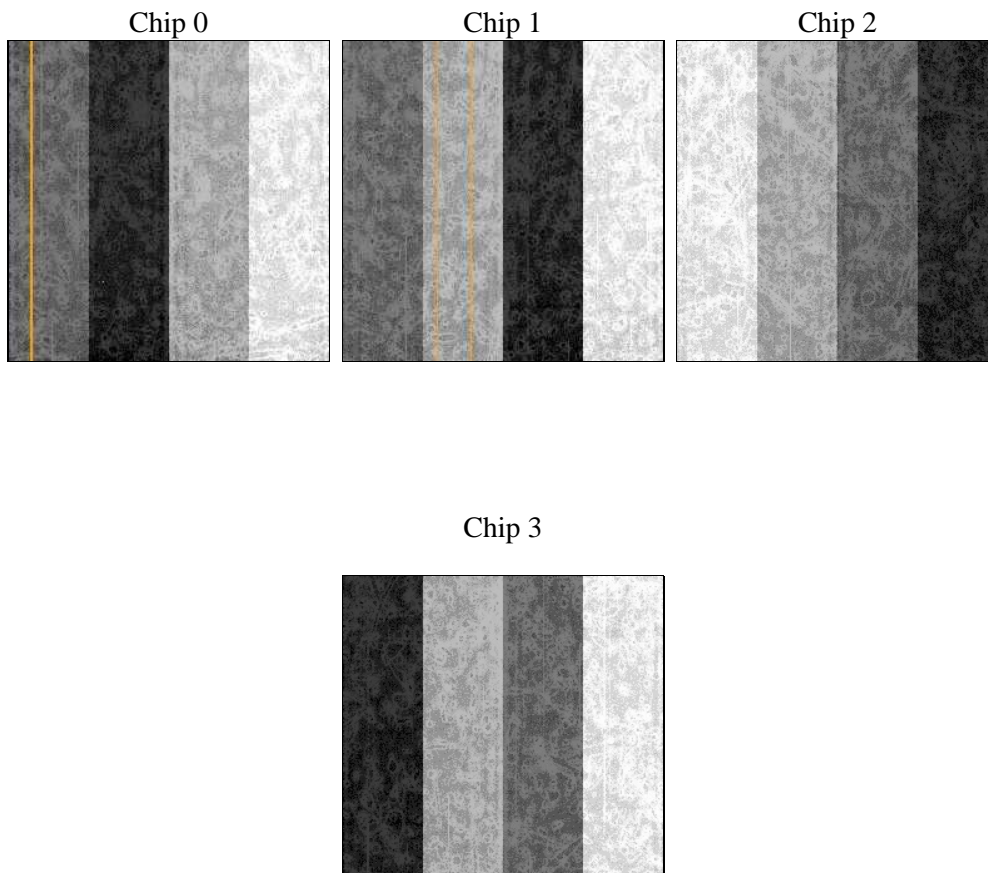
2 OBI

2.1 OBI

2.1.1 Images



2.1.2 Bias



2.1.3 Parameters

obi_num	0	Obi number	sched_exp_time	30141.329000	[s] Scheduled observation exposure time
ascdsver	8.4.3	Processing system revision	ontime	28651.734503597	Sum of GTIs [s]
caldbver	4.4.8	 	ontime0	23758.076928973	Sum of GTIs [s]
date	2012-03-25T16:45:03	Date and time of file creation	ontime1	26540.991188377	Sum of GTIs [s]
revision	2	Processing version of data	ontime2	29223.393541992	Sum of GTIs [s]
			ontime3	28651.734503597	Sum of GTIs [s]
			l1events	5442337	Number of level 1 events

2.1.4 Events

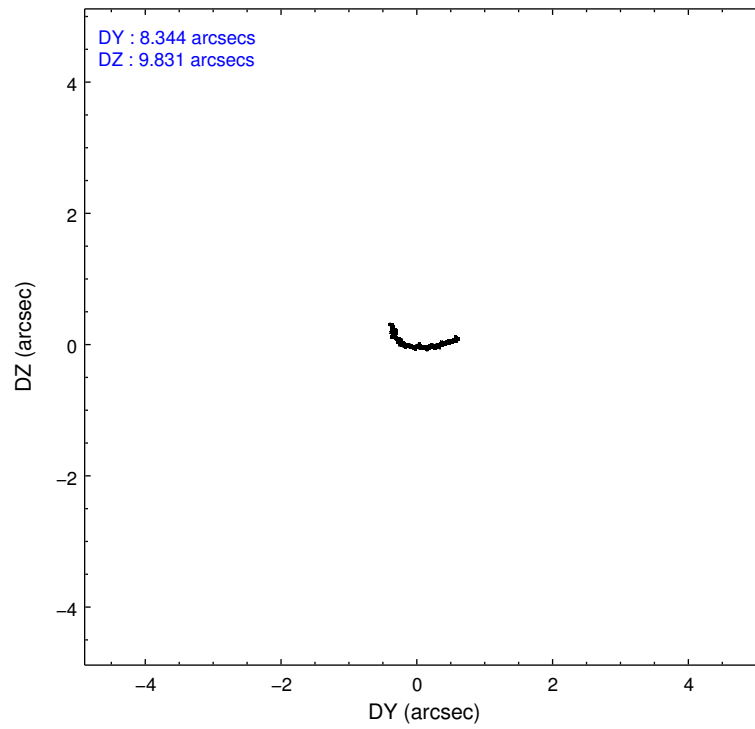
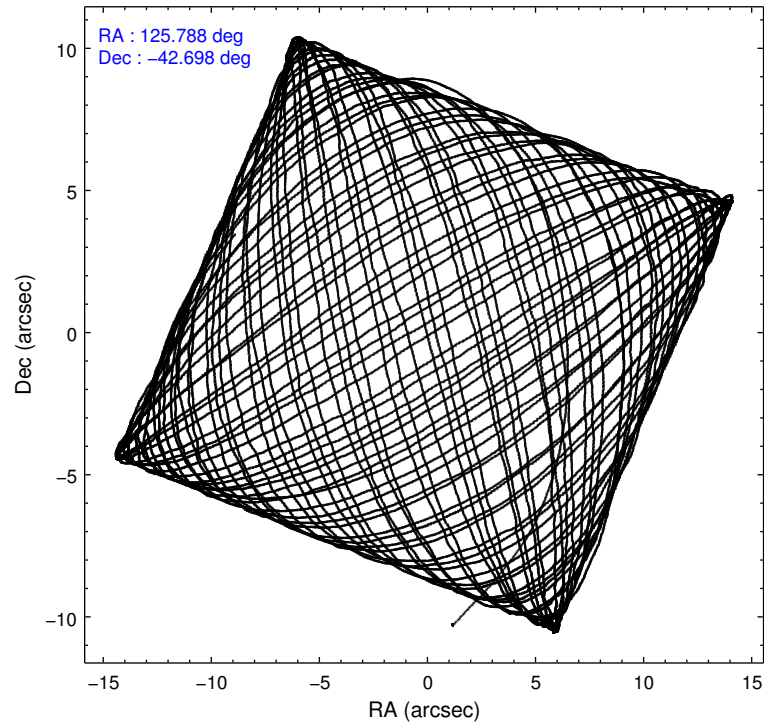
	ccd 0	ccd 1	ccd 2	ccd 3
level 1 events	2093624	1670187	589453	1089073
rejected events	171224	173297	195712	186290
rejected %	8%	10%	33%	17%

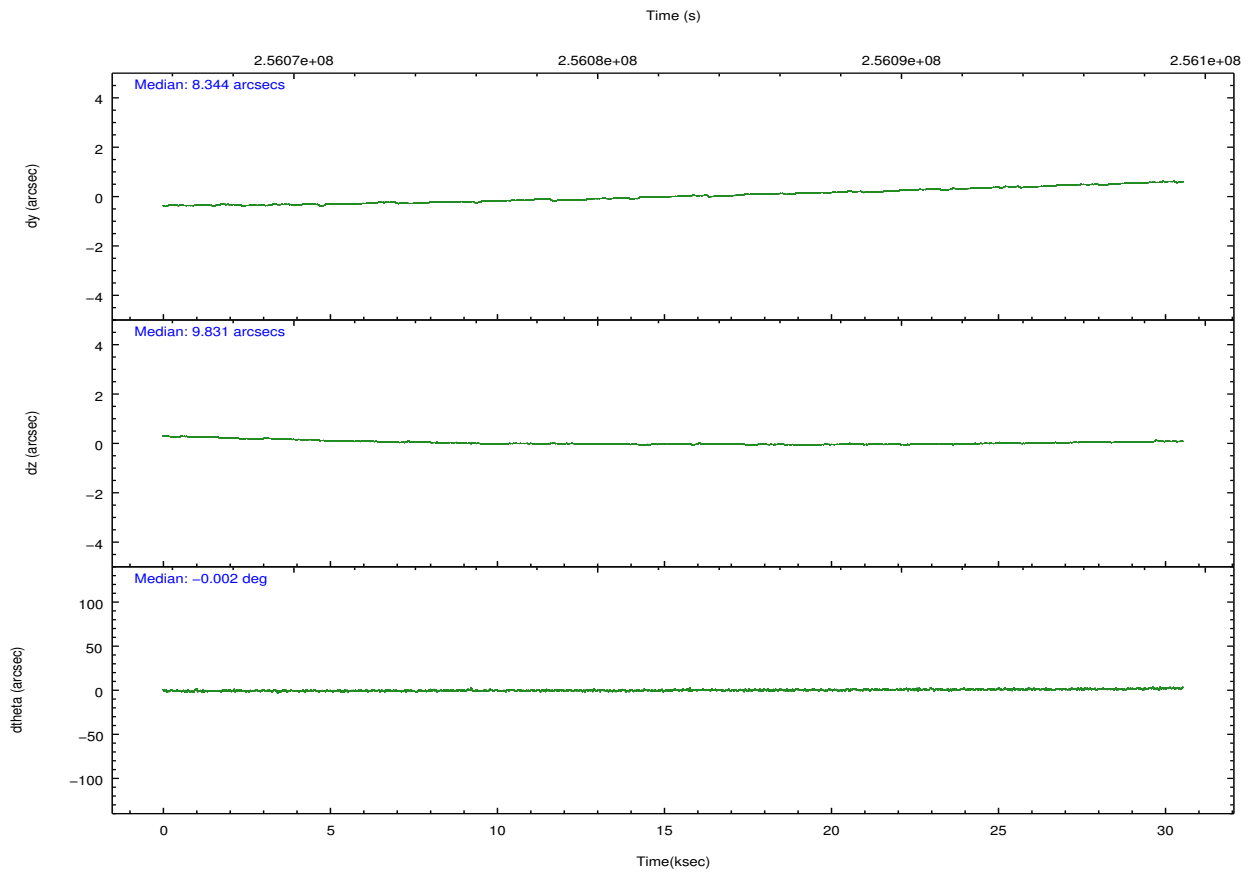
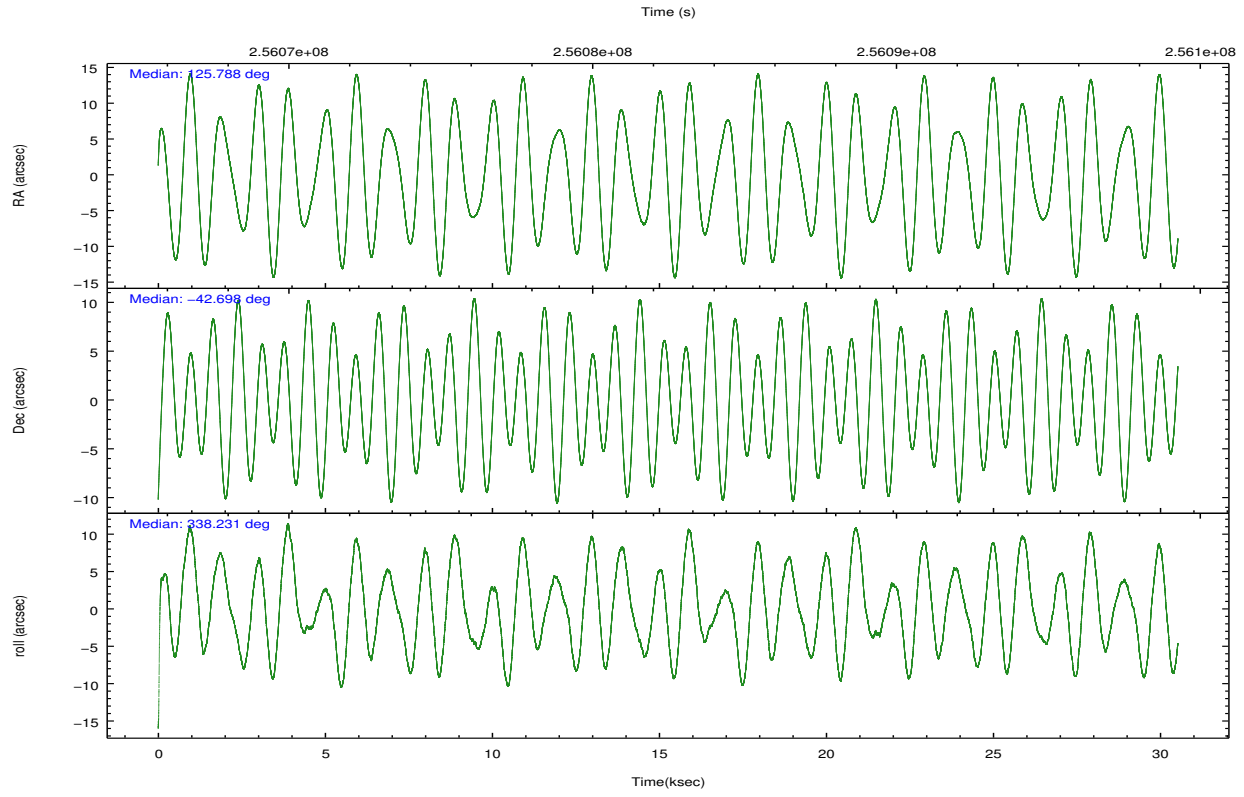
	ccd 0	ccd 1	ccd 2	ccd 3
grade 0 events	1677865	1316308	343659	798928
	80%	78%	58%	73%
grade 1 events	8941	6432	2287	4589
	0%	0%	0%	0%
grade 2 events	147960	111694	29116	63373
	7%	6%	4%	5%
grade 3 events	39108	27780	7890	16077
	1%	1%	1%	1%
grade 4 events	38679	27269	7689	15800
	1%	1%	1%	1%
grade 5 events	10357	10649	6586	9318
	0%	0%	1%	0%
grade 6 events	19286	14216	5480	8783
	0%	0%	0%	0%
grade 7 events	151428	155839	186746	172205
	7%	9%	31%	15%

2.2 Compared Parameters

Parameter	Planned	Actual	Parameter	Planned	Actual
Instrument	ACIS	ACIS	Obspar format version number	7	7
Detector	ACIS-0123	ACIS-0123	Obspar file type	PREDICTED	ACTUAL
Grating	NONE	NONE	Obspar update status	NONE	UPDATED
Data mode	FAINT	FAINT	Number of optional ACIS chips dropped	0	0
Observation mode	POINTING	POINTING	On-chip summing requested	N	N
[deg] Pointing RA	125.751631	125.7884913629883	Subarray requested	NONE	NONE
[deg] Pointing Dec	-42.702118	-42.69809825459426	Alternating exposures requested	N	N
[deg] Pointing Roll	338.003962	338.2376334931446	[s] Primary exposure time	0.000000	3.1
[mm] SIM focus pos	-0.782348	-0.7809083437167272			
[mm] SIM defocus	0	0.001439871863259334			
[mm] SIM translation stage pos	-233.592463	-233.5874344608287			
[mm] SIM translation stage offset	0	-0.005018542100998502			
[s] Observation start time (MET)	256067595.184000	256066622.28314			
Observation start date	2006-02-11T17:52:10	2006-02-11T17:37:02			
[s] Observation end time (MET)	256097736.184000	256097971.9096			
Observation end date	2006-02-12T02:14:31	2006-02-12T02:19:31			
Read mode	TIMED	TIMED			

2.3 Aspect



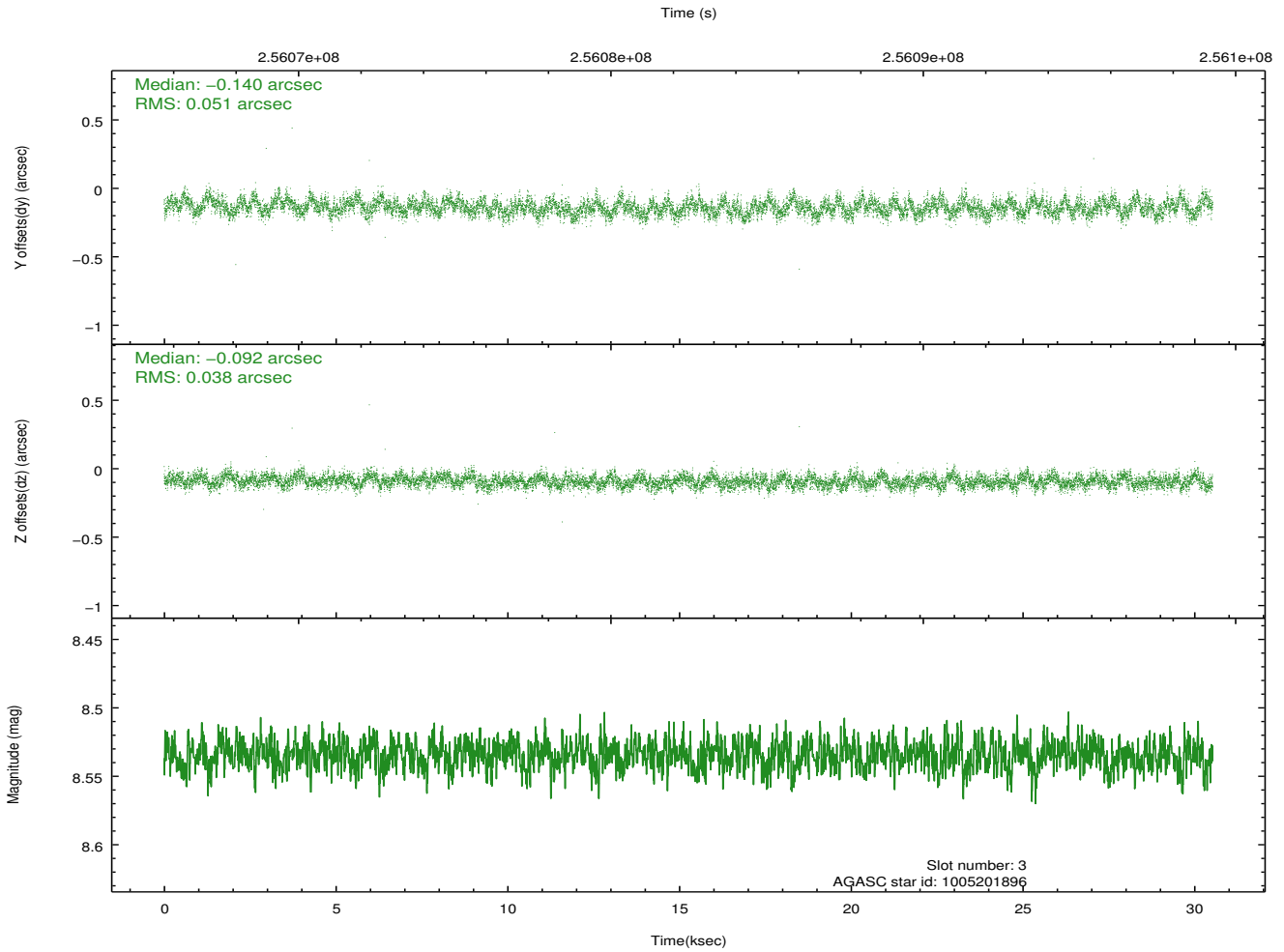
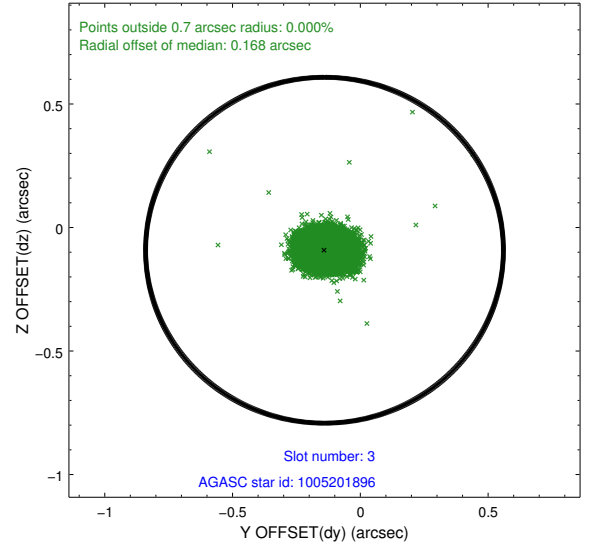
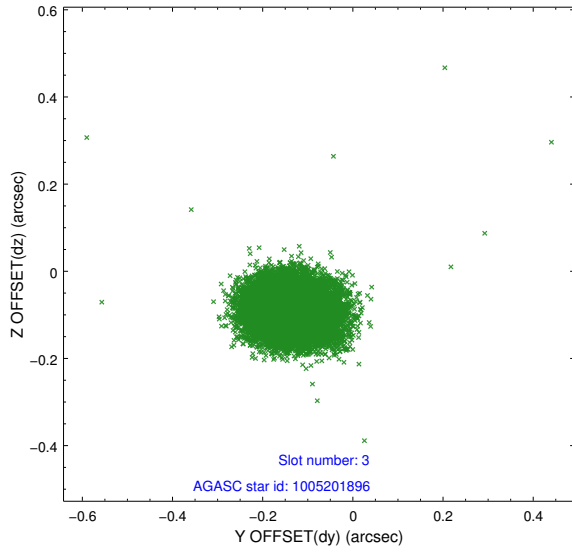


Slot Statistics

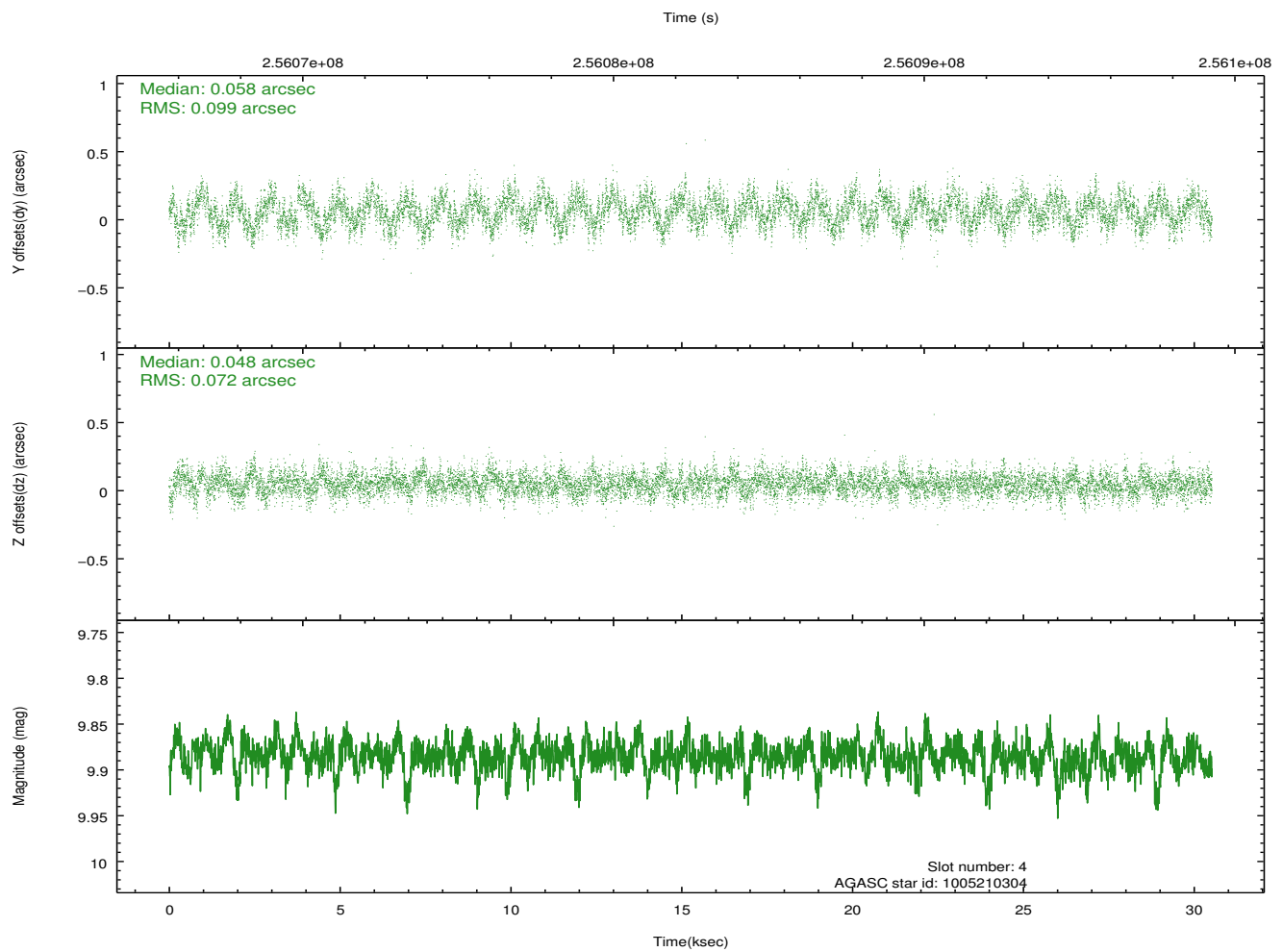
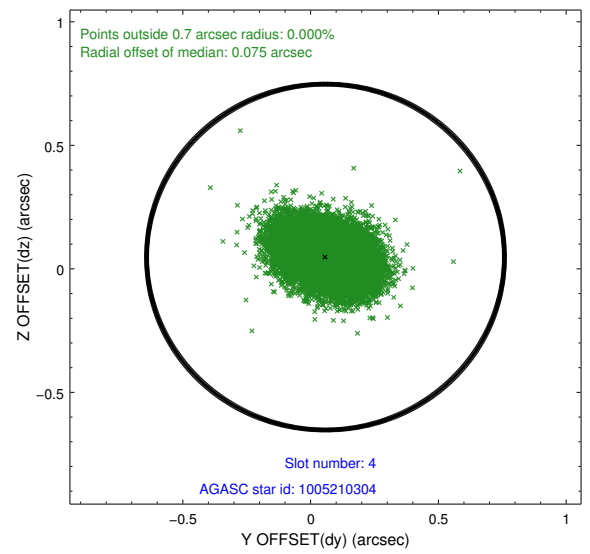
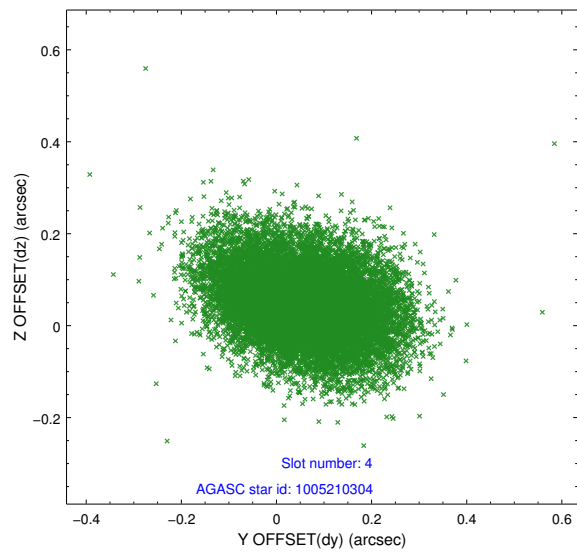
slot	status	id	mag	n_pts	med_dy	med_dz	dr1	dr2	ra	dec	mean_y	mean_z
0	FID	ACIS-I-1	7.25	7446	-0.012	0.069	0.013	0.021	0.000000	0.000000	931.26	-833.27
1	FID	ACIS-I-2	7.14	7444	-0.104	-0.080	0.012	0.020	0.000000	0.000000	-762.89	-839.88
2	FID	ACIS-I-6	7.25	7446	0.025	0.078	0.013	0.022	0.000000	0.000000	396.91	1708.53
3	GUIDE	1005201896	8.53	14889	-0.140	-0.092	0.067	0.107	126.670468	-42.695868	2250.90	919.46
4	GUIDE	1005210304	9.89	14530	0.058	0.048	0.129	0.212	125.364534	-42.215893	-1611.07	1234.52
5	GUIDE	1005723560	8.47	14886	0.073	0.054	0.086	0.143	126.279097	-43.364629	2175.59	-1697.95
6	GUIDE	1005724040	7.59	14891	-0.007	0.094	0.068	0.109	125.738175	-43.227880	676.98	-1768.05
7	GUIDE	1005202760	9.68	14884	0.019	-0.108	0.129	0.206	126.103143	-42.155139	133.38	2175.15

2.4 Star Slots

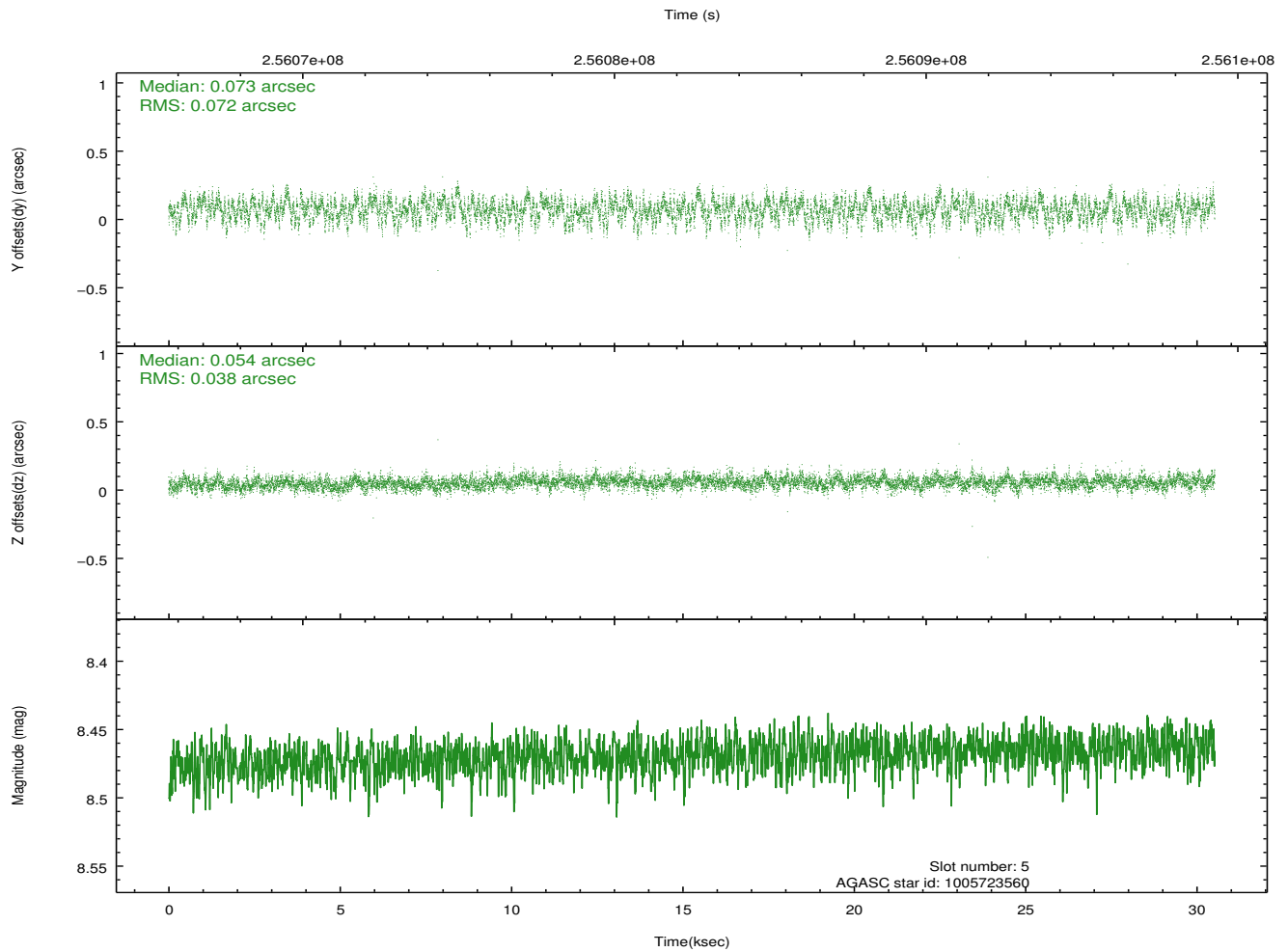
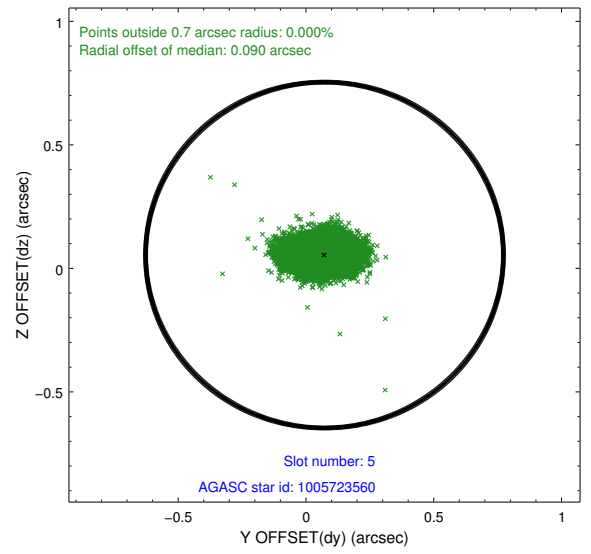
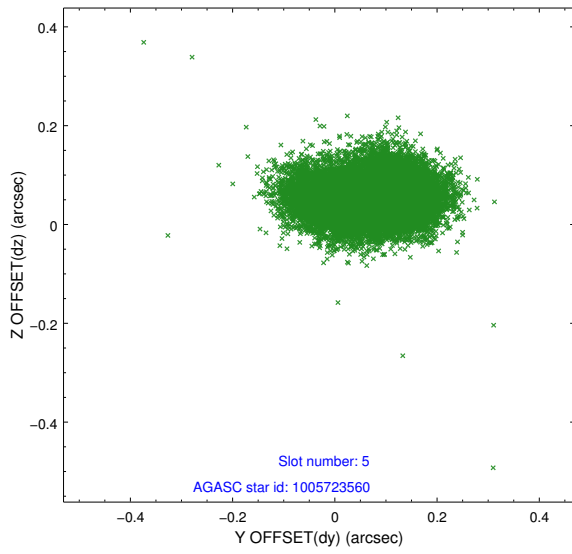
2.4.1 Slot 3



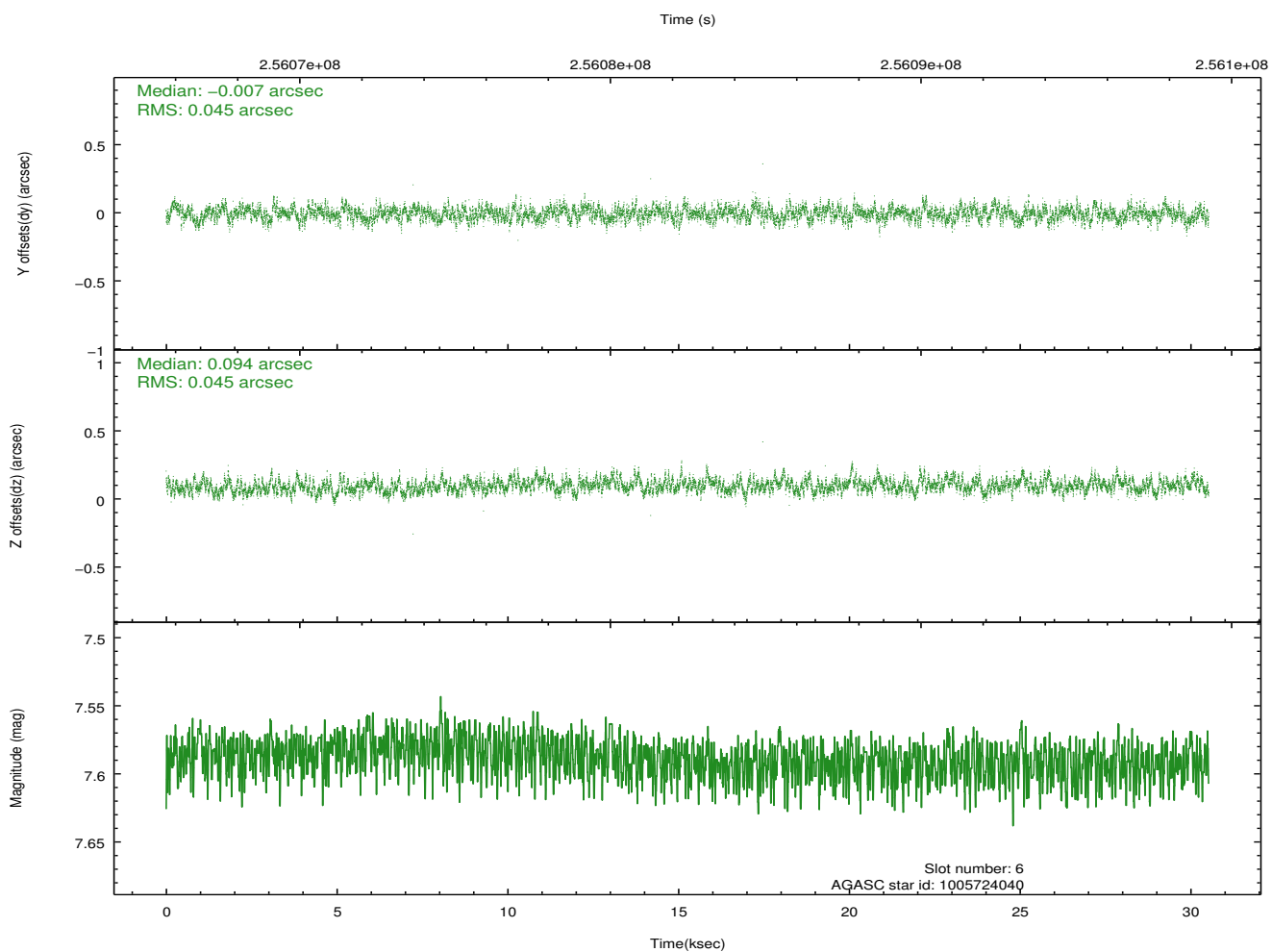
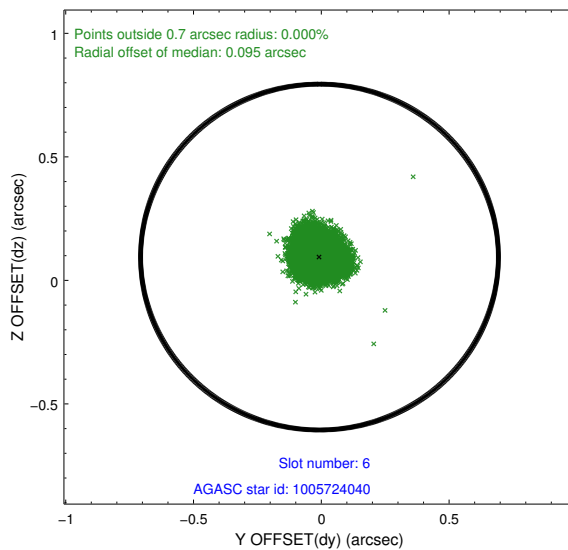
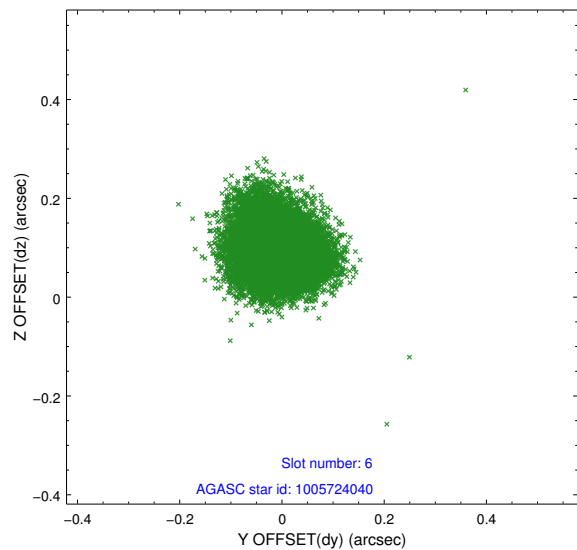
2.4.2 Slot 4



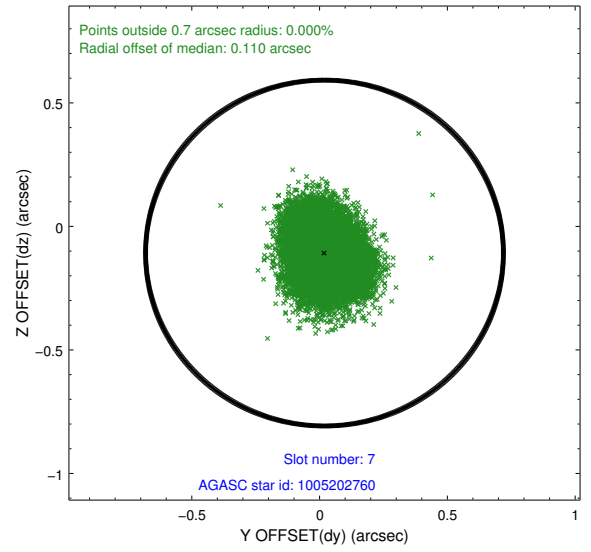
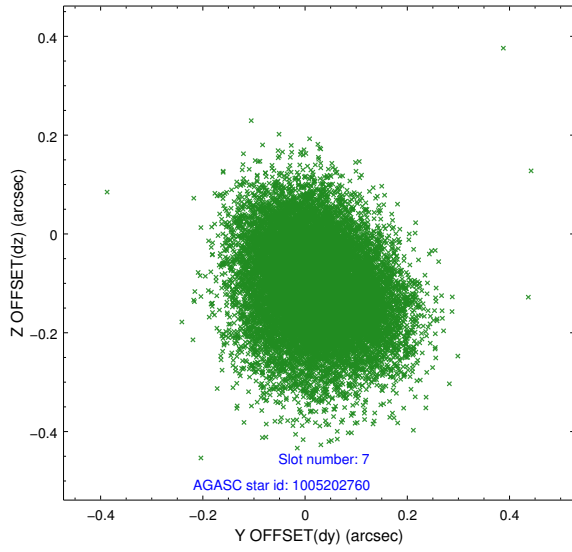
2.4.3 Slot 5



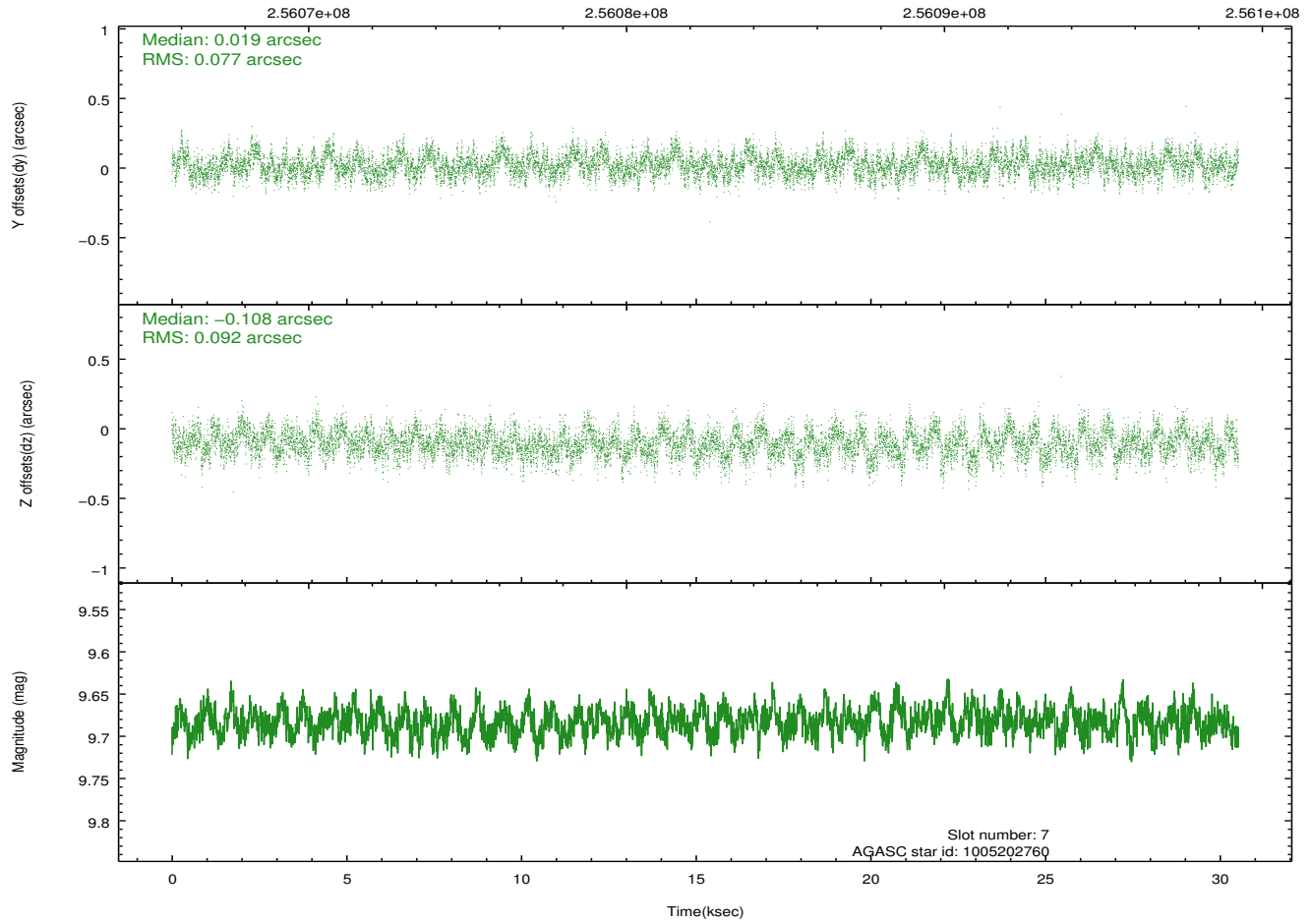
2.4.4 Slot 6



2.4.5 Slot 7

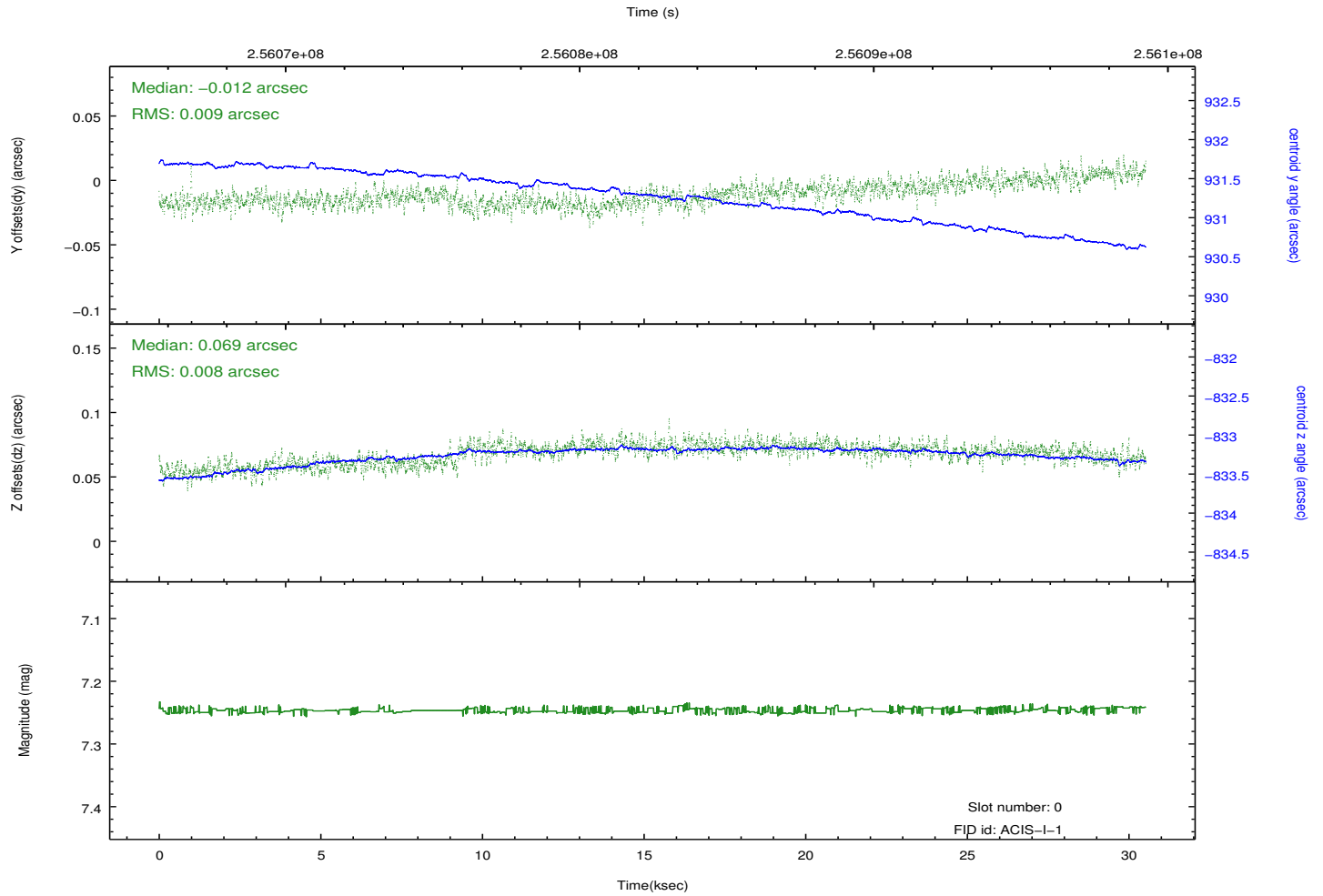
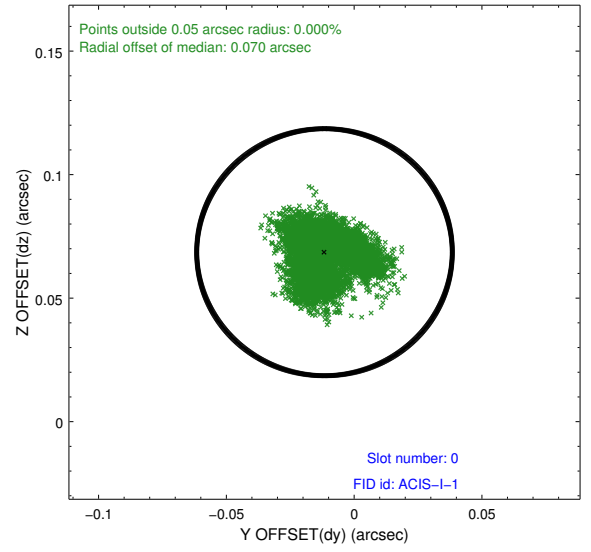
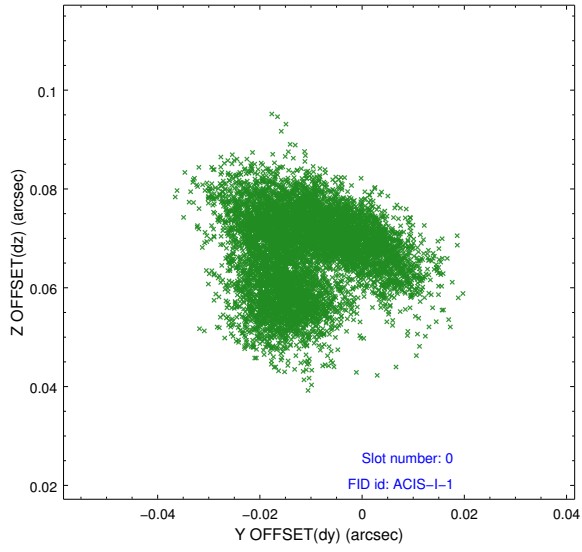


Time (s)

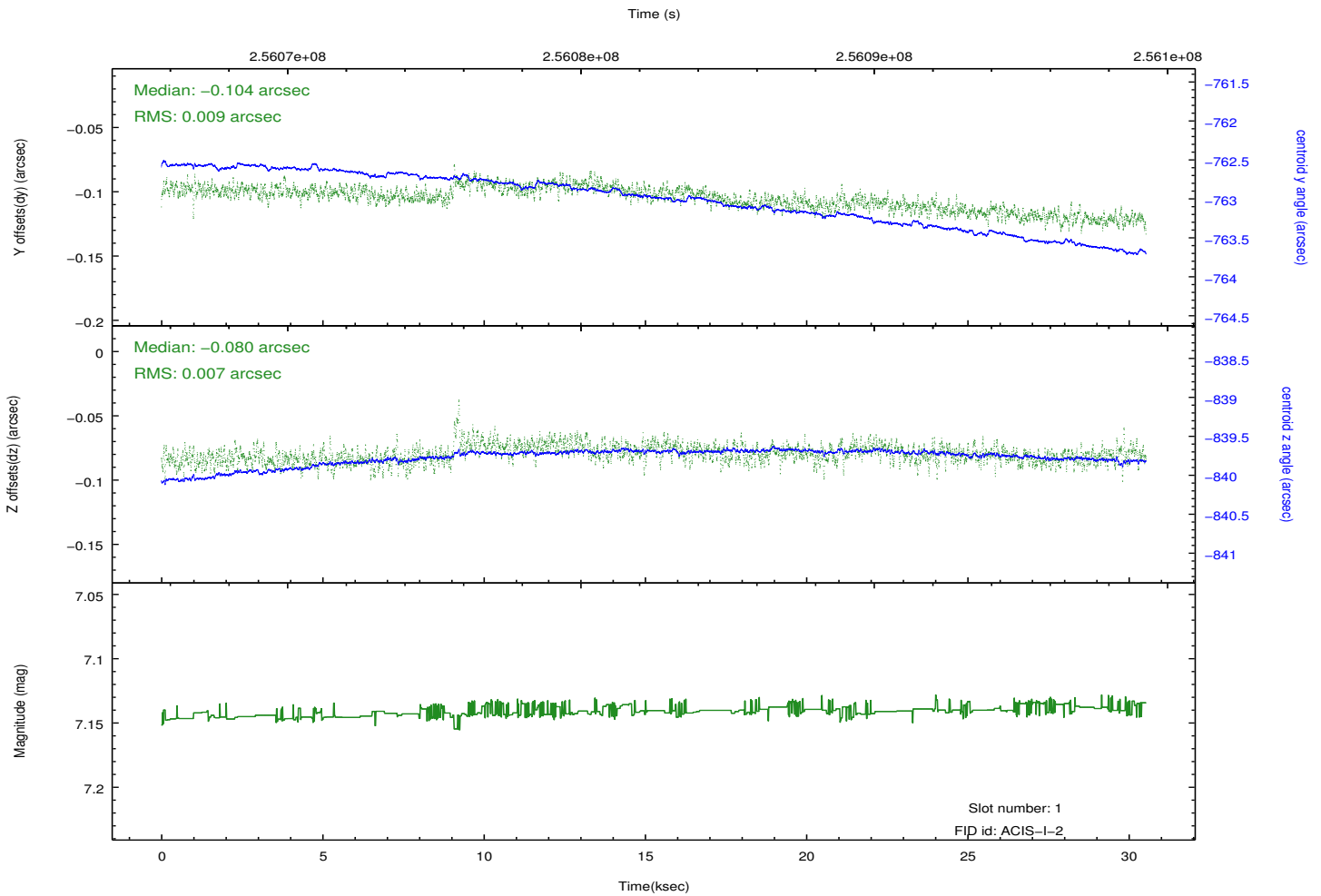
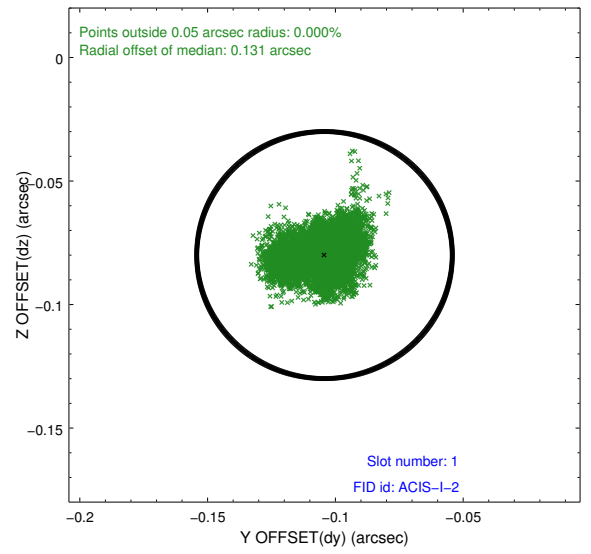
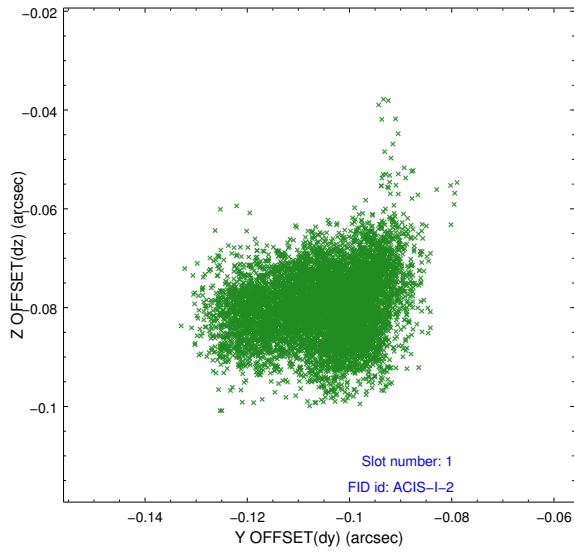


2.5 FID Slots

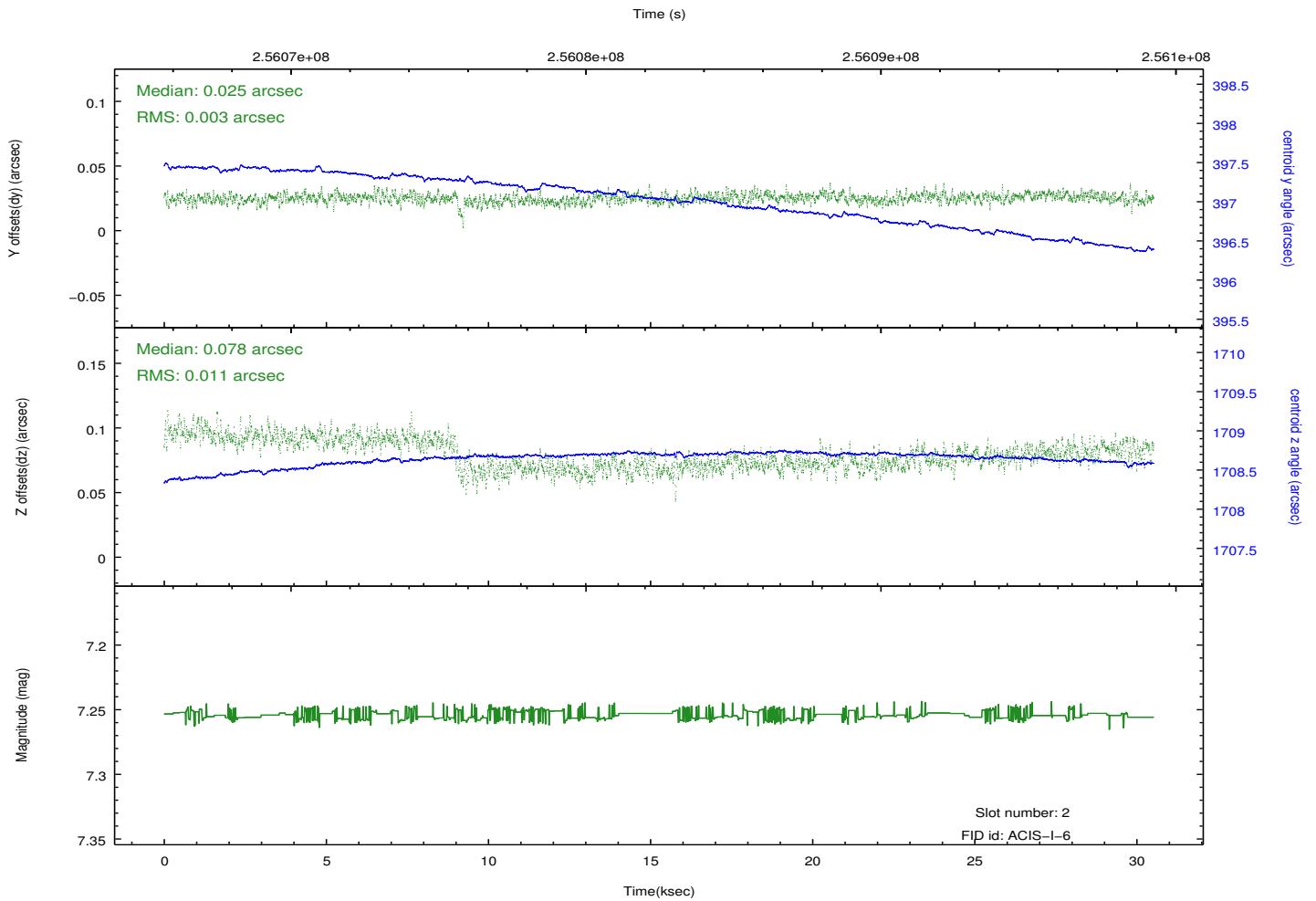
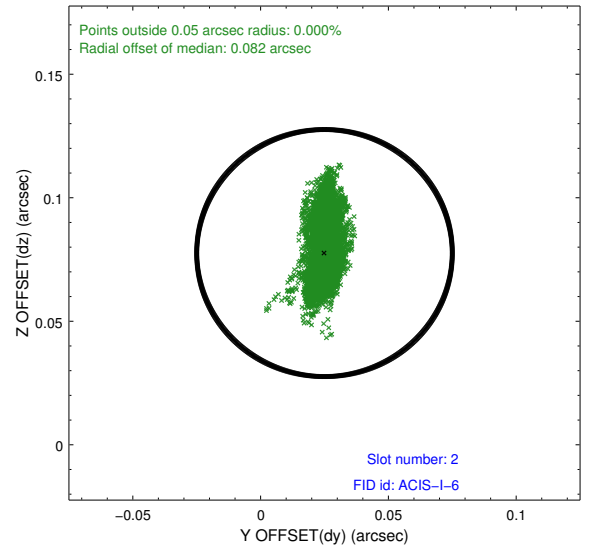
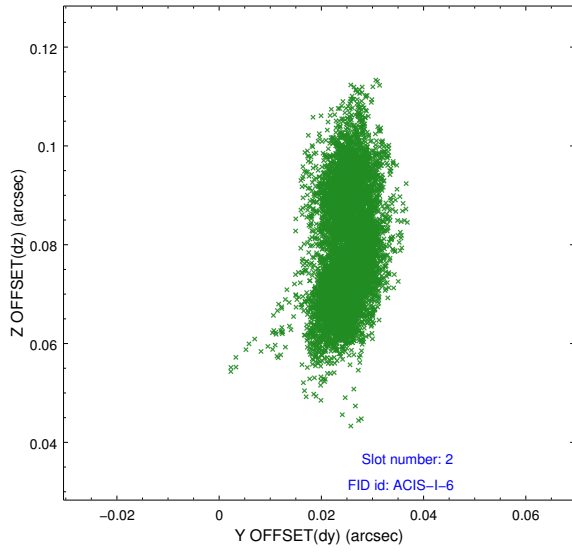
2.5.1 Slot 0



2.5.2 Slot 1



2.5.3 Slot 2



A Summary

A.1 Status

V&V Scientist	Jen Lauer
V&V Date (YYYY-MM-DD)	2012.03.27
V&V Edition	1
V&V Disposition and Status	OK
V&V Charge Time	28.6517345

A.2 Comments

Preferred roll angle not met.