

V&V Reference Report

L2 ASCDS Version : 8.4.5

Observation 651 - L2 Version 3
Chandra X-Ray Center

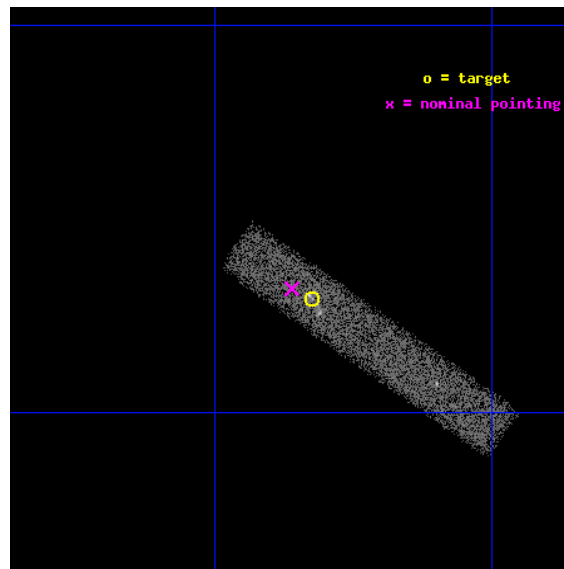
L2 Processing Date : Sep 1 2012

Contents

1	Front	2
2	OBI	3
2.1	OBI	3
2.1.1	Images	3
2.1.2	Bias	3
2.1.3	Parameters	4
2.1.4	Events	4
2.2	Compared Parameters	5
2.3	Aspect	6
2.4	Star Slots	9
2.4.1	Slot 3	9
2.4.2	Slot 4	10
2.4.3	Slot 5	11
2.4.4	Slot 6	12
2.4.5	Slot 7	13
2.5	FID Slots	14
2.5.1	Slot 0	14
2.5.2	Slot 1	15
2.5.3	Slot 2	16
A	Summary	17
A.1	Status	17
A.2	Comments	17

1 Front

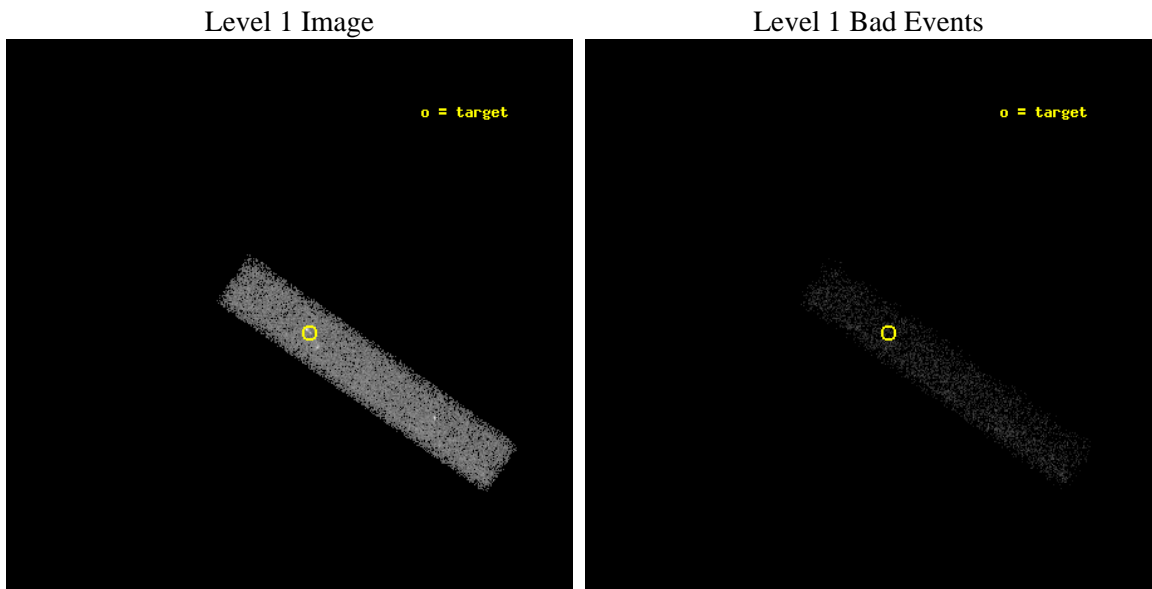
seq_num	300020	Sequence number
obs_id	651	Observation id
title	THE X-RAY SPATIAL AND SPECTRAL STRUCTURE OF R AQUARI	Proposal tit
observer	Dr. Edwin Kellogg	Principal investigator
object	R AQUARI	Source name
dtcycle	0	
cycle	P	events from which exps? Prim/Second/Both
ra_targ	355.956052	Observer's specified target RA [deg]
dec_targ	-15.284496	Observer's specified target Dec [deg]
ra_nom	355.96540863138	Nominal RA [deg]
dec_nom	-15.280367984387	Nominal Dec [deg]
roll_nom	34.980189873327	Nominal Roll [deg]
revision	3	Processing version of data
ontime	24582.5	Sum of GTIs [s]
livetime	22717.821233181	Livetime [s]
ontime7	24582.5	Sum of GTIs [s]
l2events	14524	Number of level 2 events



2 OBI

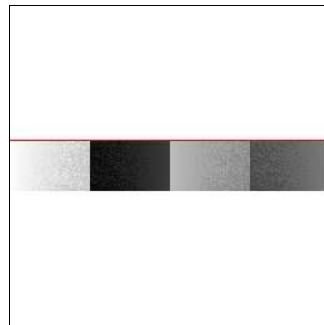
2.1 OBI

2.1.1 Images



2.1.2 Bias

Chip 7



2.1.3 Parameters

obi_num	1	Obi number	sched_exp_time	24401.953000	[s] Scheduled observation exposure time
ascdsver	8.4.5	Processing system revision	ontime	24582.5	Sum of GTIs [s]
caldbver	4.5.1.1	 	ontime7	24582.5	Sum of GTIs [s]
date	2012-09-01T15:50:22	Date and time of file creation	l1events	31464	Number of level 1 events
revision	3	Processing version of data			

2.1.4 Events

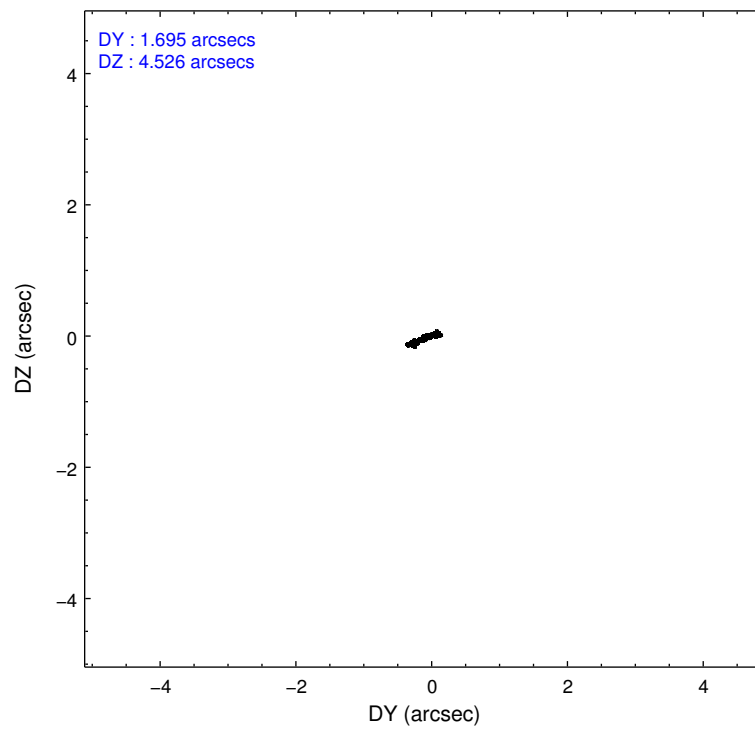
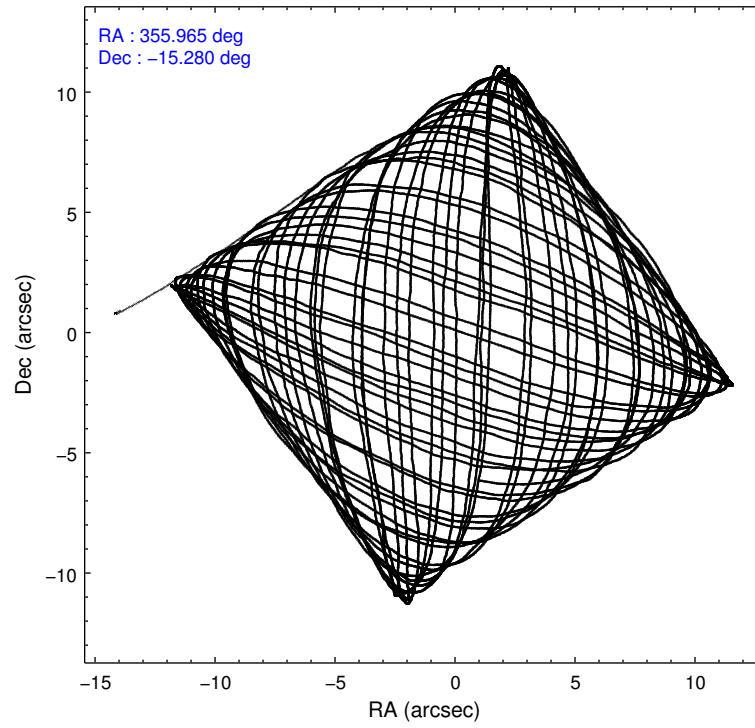
	ccd 7
level 1 events	31464
rejected events	16343
rejected %	51%

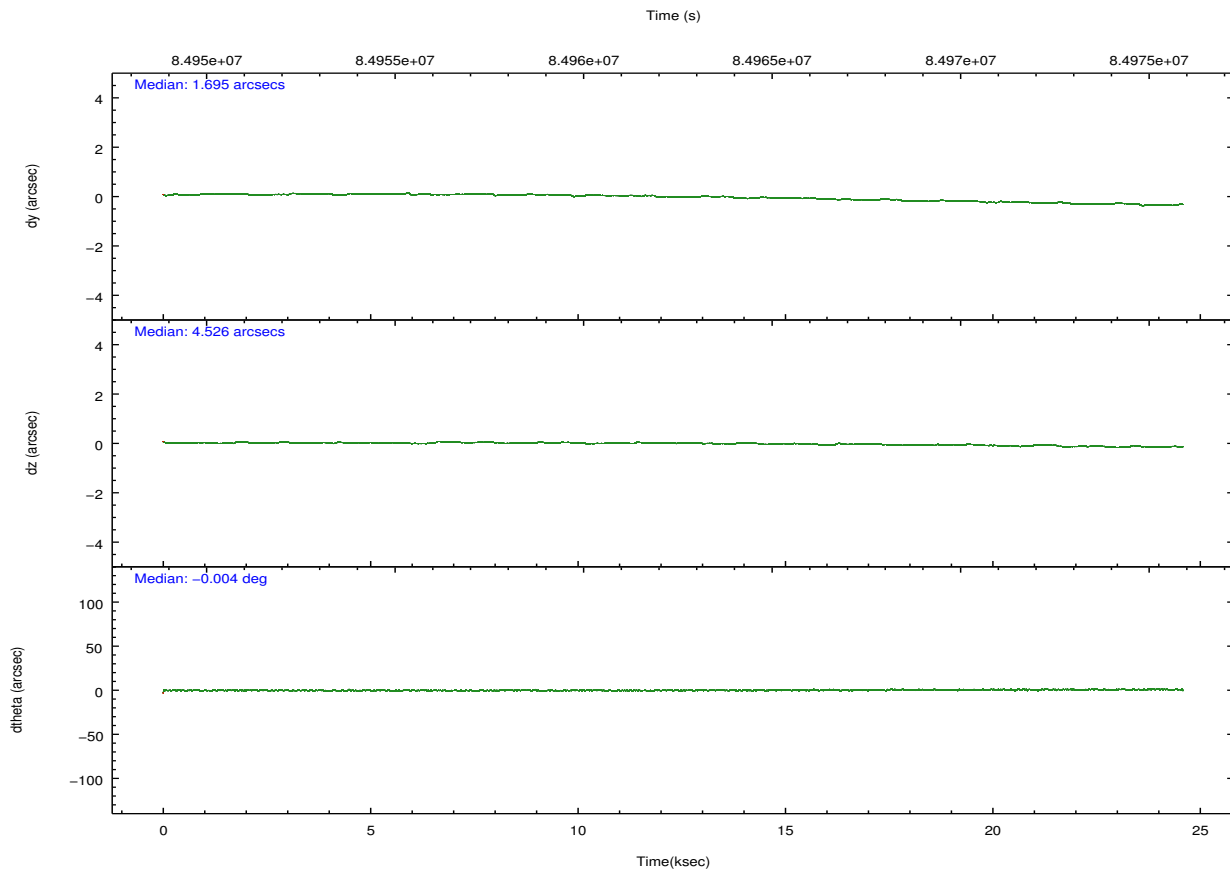
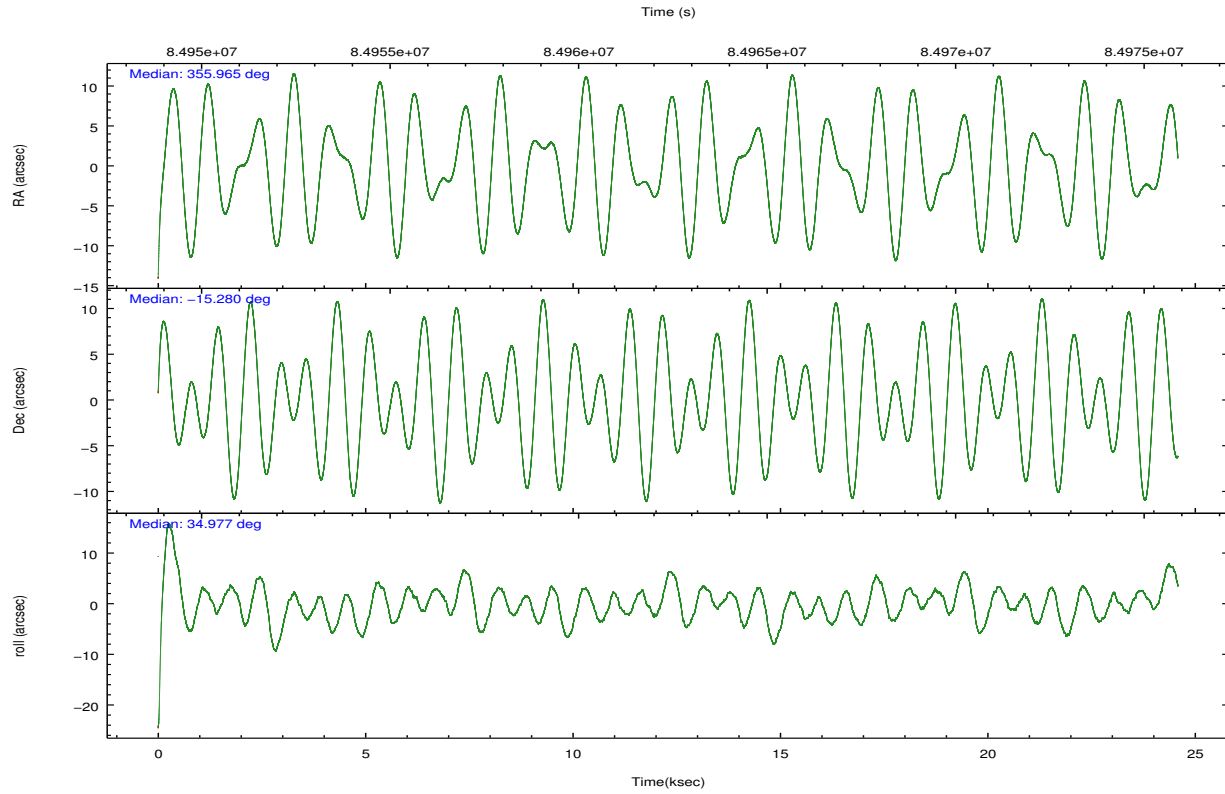
	ccd 7
grade 0 events	2398
	7%
grade 1 events	35
	0%
grade 2 events	2965
	9%
grade 3 events	1959
	6%
grade 4 events	1912
	6%
grade 5 events	2888
	9%
grade 6 events	6421
	20%
grade 7 events	12886
	40%

2.2 Compared Parameters

Parameter	Planned	Actual	Parameter	Planned	Actual
Instrument	ACIS	ACIS	Obspar format version number	7	7
Detector	ACIS-7	ACIS-7	Obspar file type	PREDICTED	ACTUAL
Grating	NONE	NONE	Obspar update status	NONE	UPDATED
Data mode	VFAINT	VFAINT	Number of optional ACIS chips dropped	0	0
Observation mode	POINTING	POINTING	On-chip summing requested	N	N
[deg] Pointing RA	355.953551	355.9654086313761	Subarray requested	CUSTOM	CUSTOM
[deg] Pointing Dec	-15.305260	-15.28036798438712	Subarray start row	433	433
[deg] Pointing Roll	34.820443	34.98018987332694	Subarray row count	160	160
[mm] SIM focus pos	-0.684267	-0.6828225247311905	Alternating exposures requested	N	N
[mm] SIM defocus	0	0.001444936568705701	[s] Primary exposure time	0.000000	0.5
[mm] SIM translation stage pos	-190.132523	-190.145094680475			
[mm] SIM translation stage offset	0	0.01257209746719923			
[s] Observation start time (MET)	84950259.184000	84949180.568974			
Observation start date	2000-09-10T05:16:35	2000-09-10T04:59:40			
[s] Observation end time (MET)	84974661.184000	84974975.207443			
Observation end date	2000-09-10T12:03:17	2000-09-10T12:09:35			
Read mode	TIMED	TIMED			

2.3 Aspect



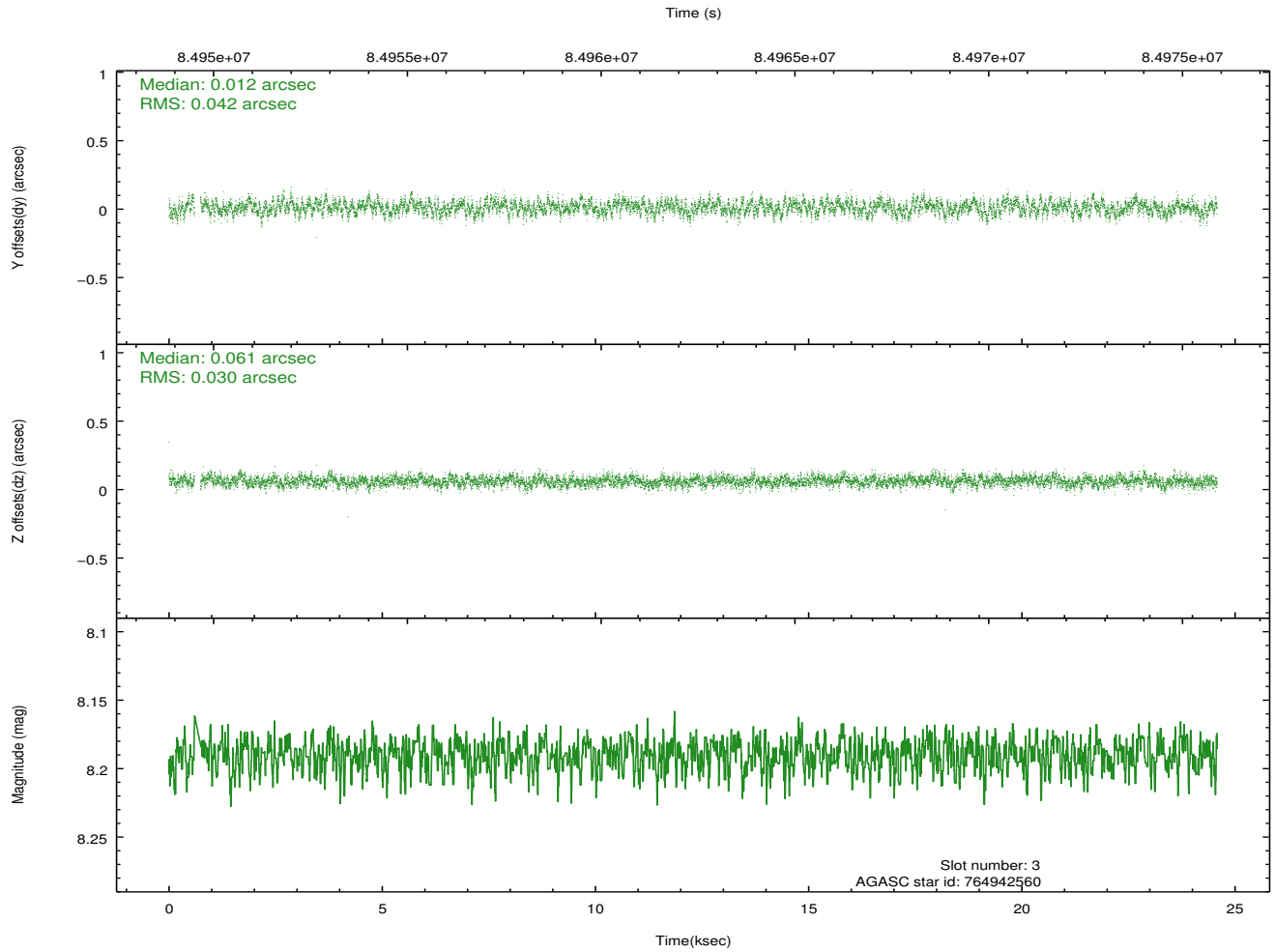
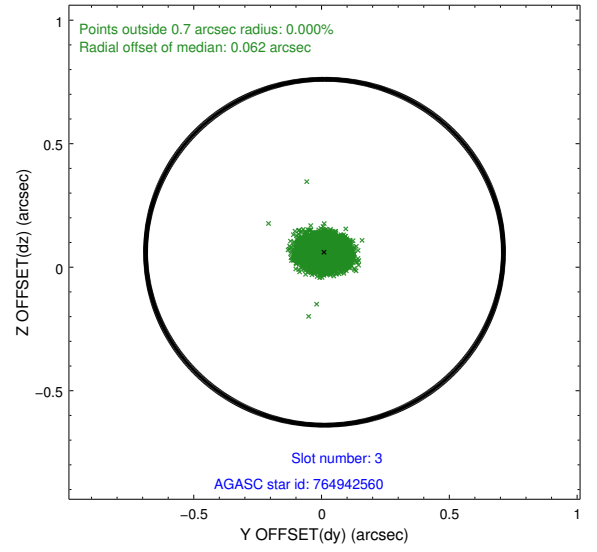
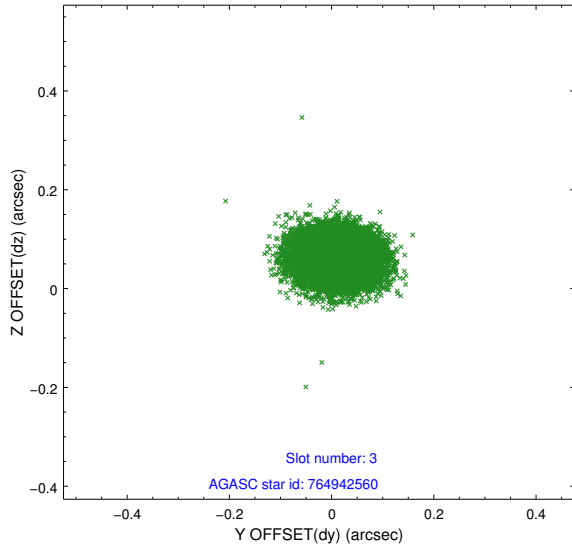


Slot Statistics

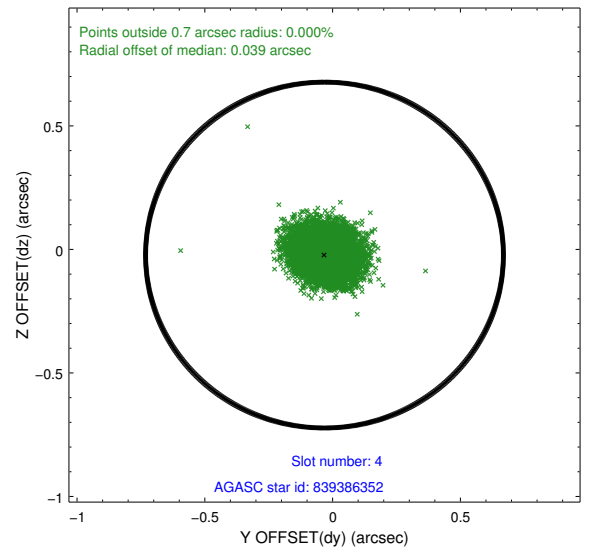
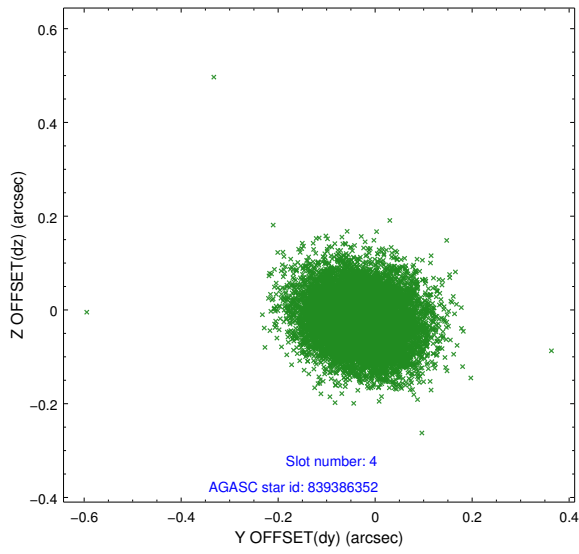
slot	status	id	mag	n_pts	med_dy	med_dz	dr1	dr2	ra	dec	mean_y	mean_z
0	FID	ACIS-S-2	7.11	5997	-0.023	-0.008	0.007	0.011	0.000000	0.000000	-754.28	-1725.50
1	FID	ACIS-S-4	7.21	5997	-0.017	0.013	0.005	0.010	0.000000	0.000000	2158.95	182.87
2	FID	ACIS-S-5	7.24	5997	0.009	0.003	0.006	0.011	0.000000	0.000000	-1806.93	176.68
3	GUIDE	764942560	8.19	11923	0.012	0.061	0.055	0.089	356.119527	-14.420028	2294.97	2284.89
4	GUIDE	839386352	9.51	11986	-0.032	-0.023	0.085	0.139	355.395782	-15.624441	-2244.55	157.81
5	GUIDE	839386400	9.28	11988	-0.057	0.022	0.076	0.125	356.007432	-15.662506	-580.86	-1163.49
6	GUIDE	764942264	9.84	11978	0.071	-0.040	0.106	0.173	356.098614	-14.982946	1076.97	663.29
7	GUIDE	764943912	10.39	11978	0.002	-0.019	0.126	0.202	355.483162	-14.990840	-697.20	1860.78

2.4 Star Slots

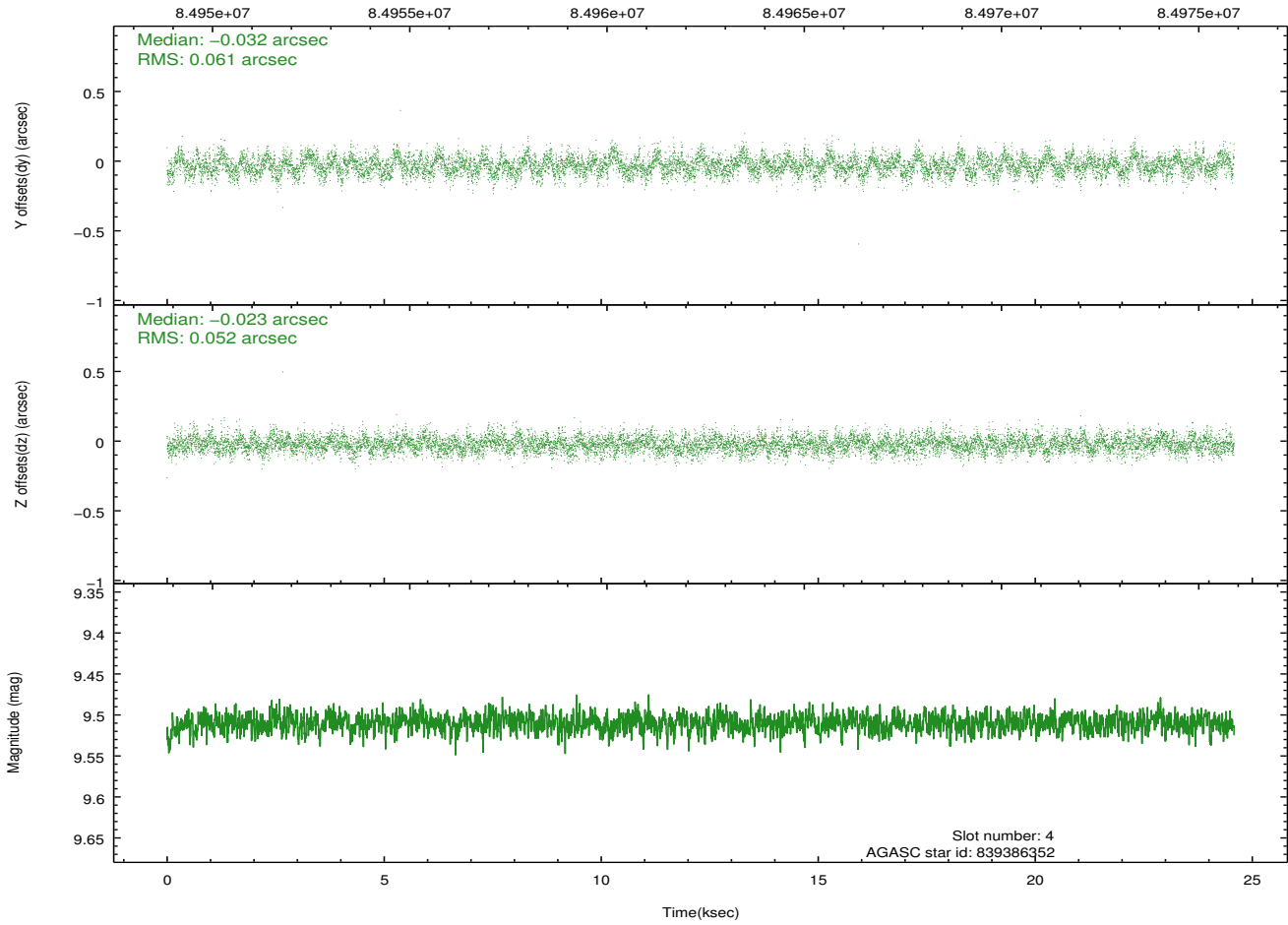
2.4.1 Slot 3



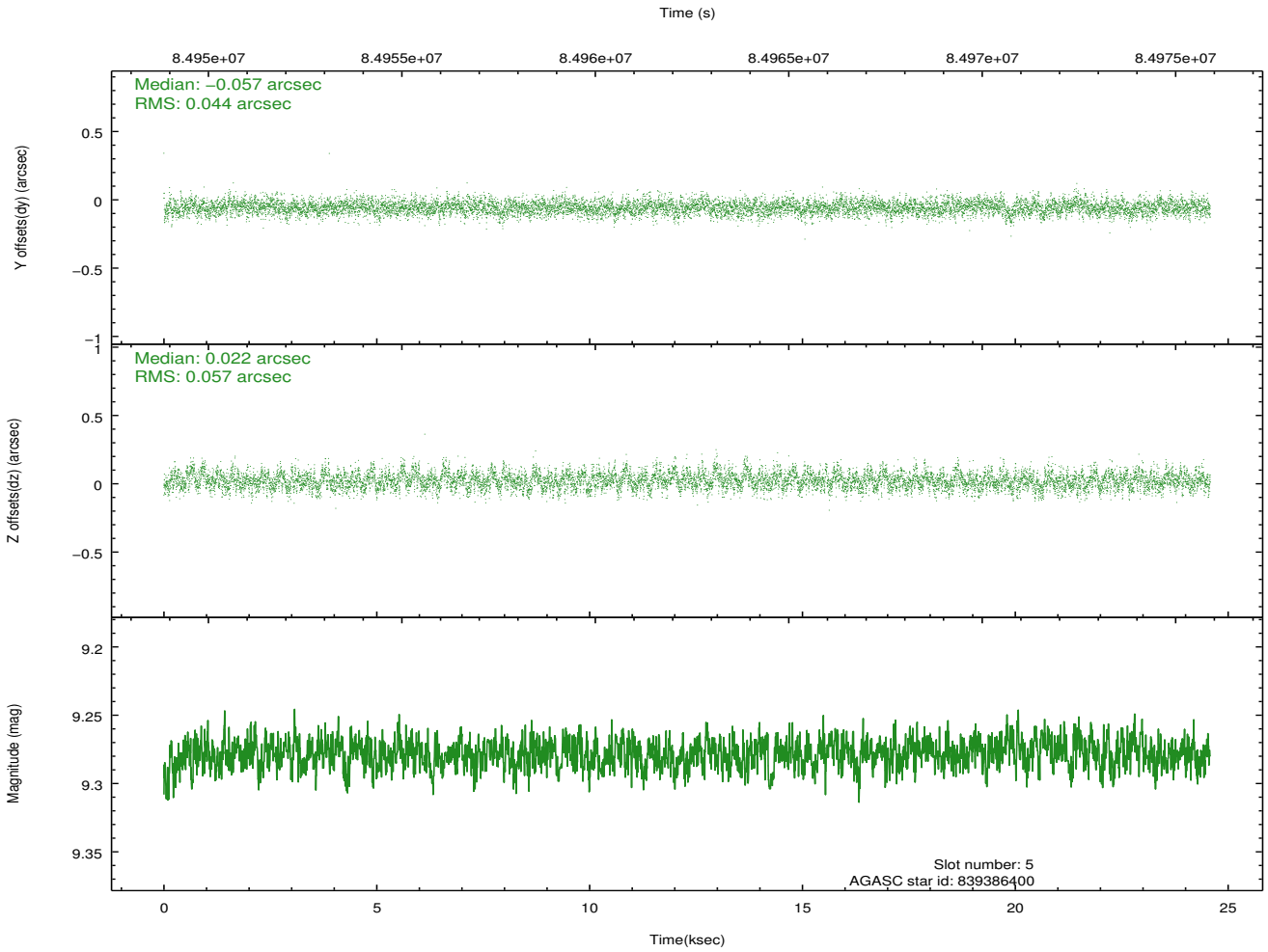
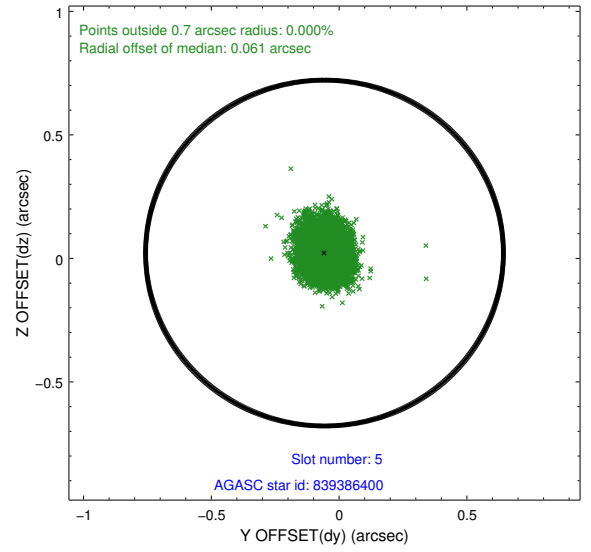
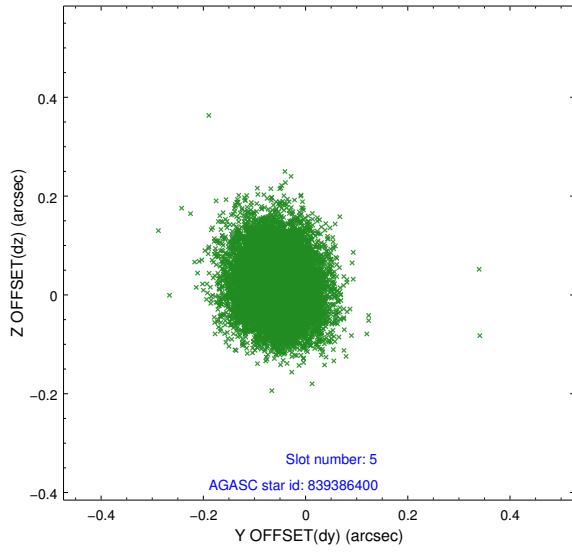
2.4.2 Slot 4



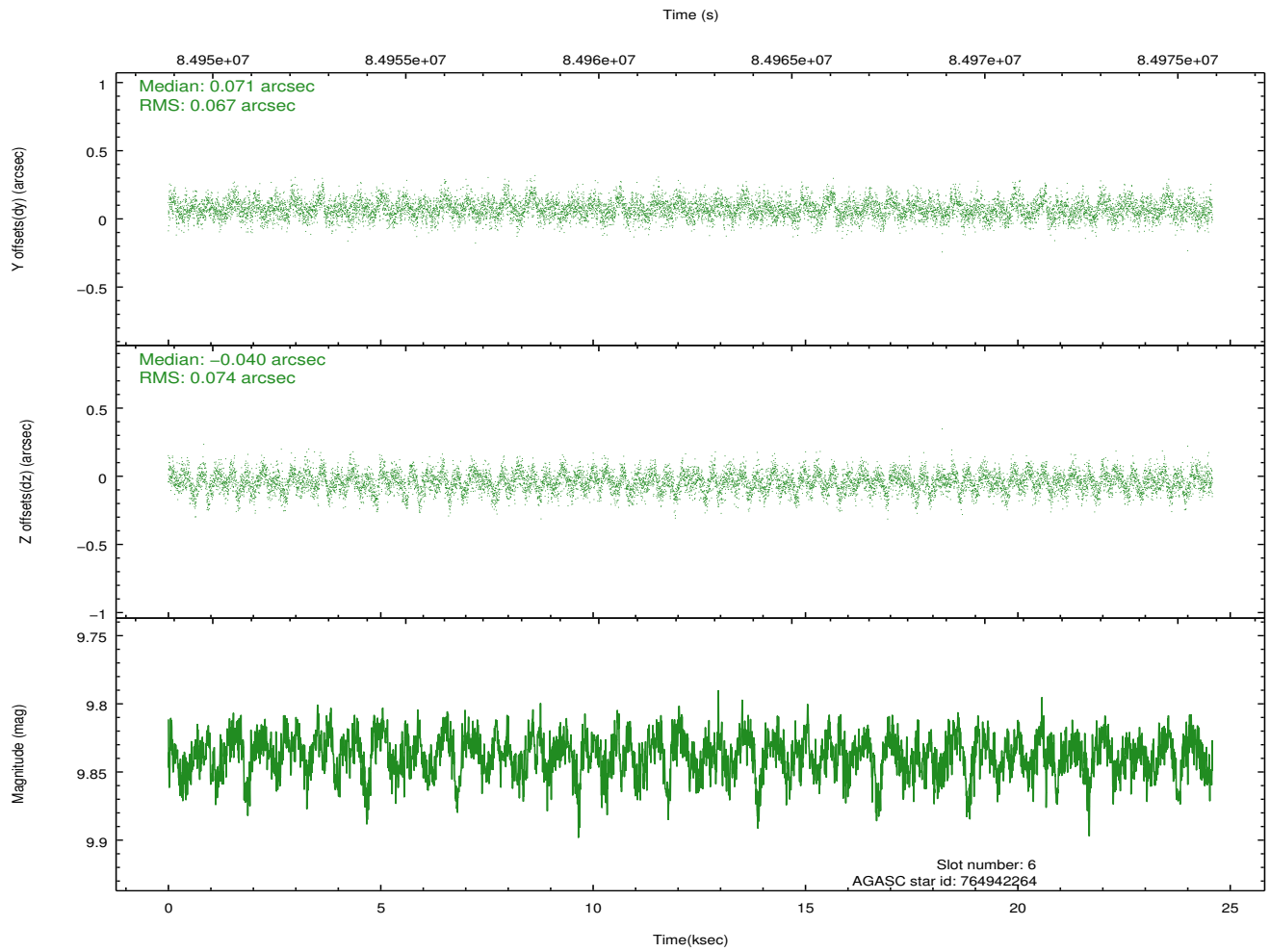
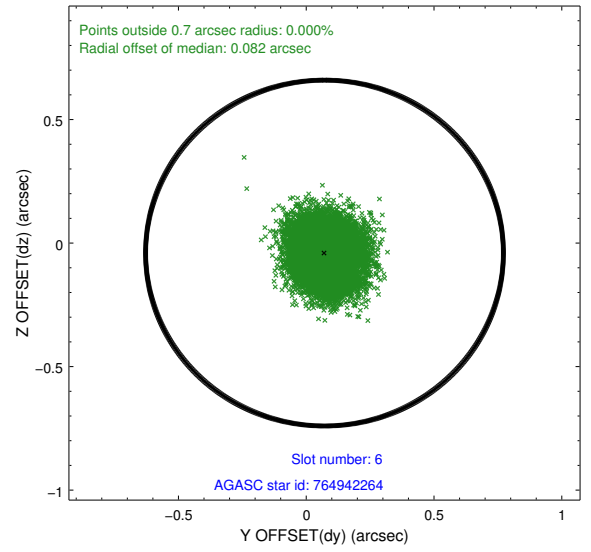
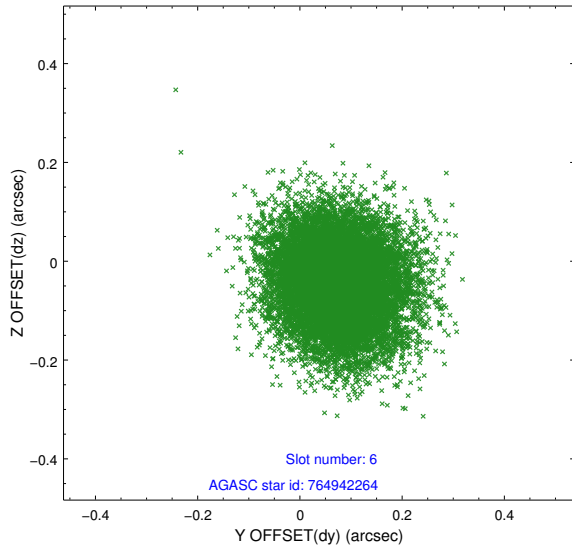
Time (s)



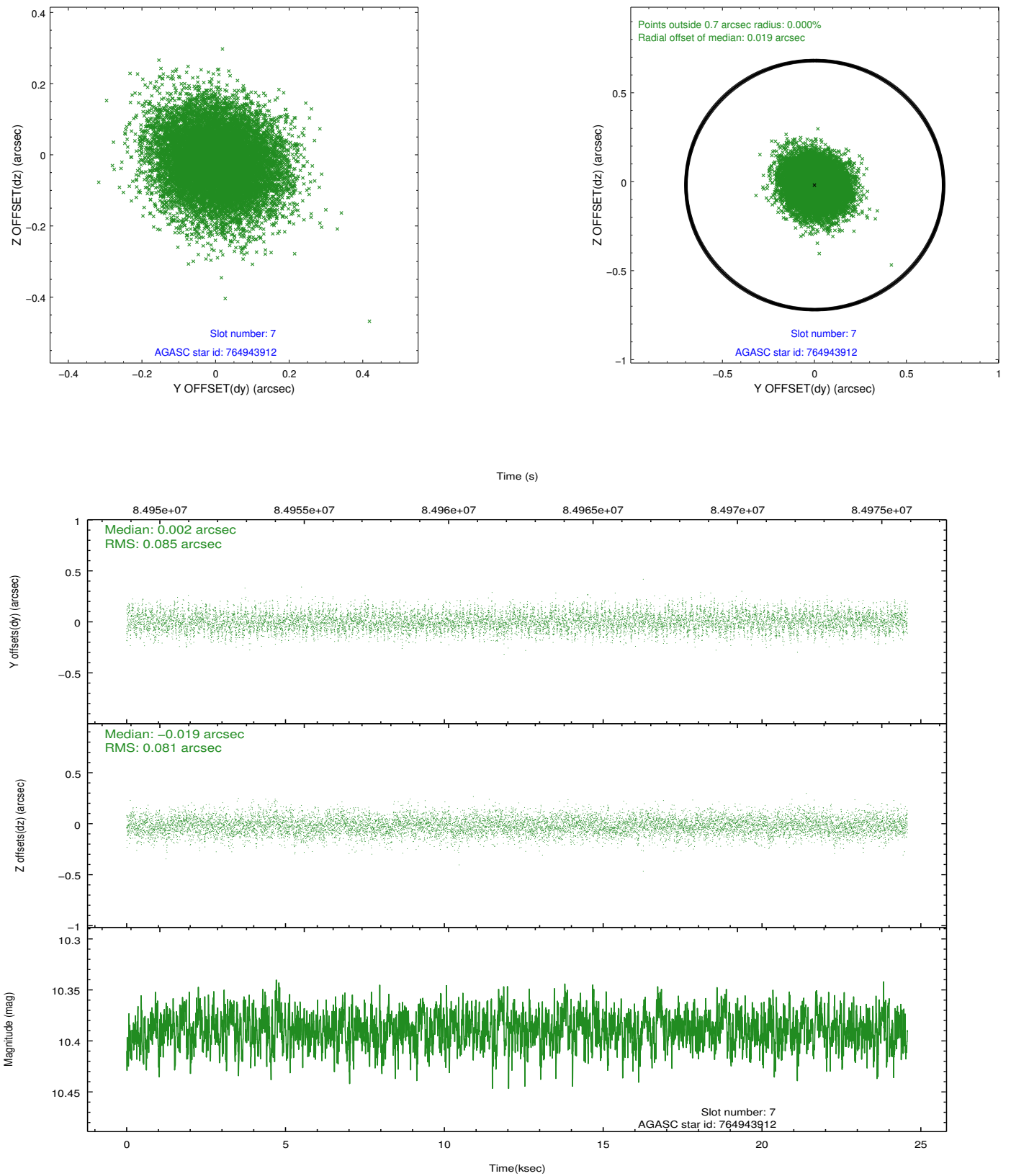
2.4.3 Slot 5



2.4.4 Slot 6

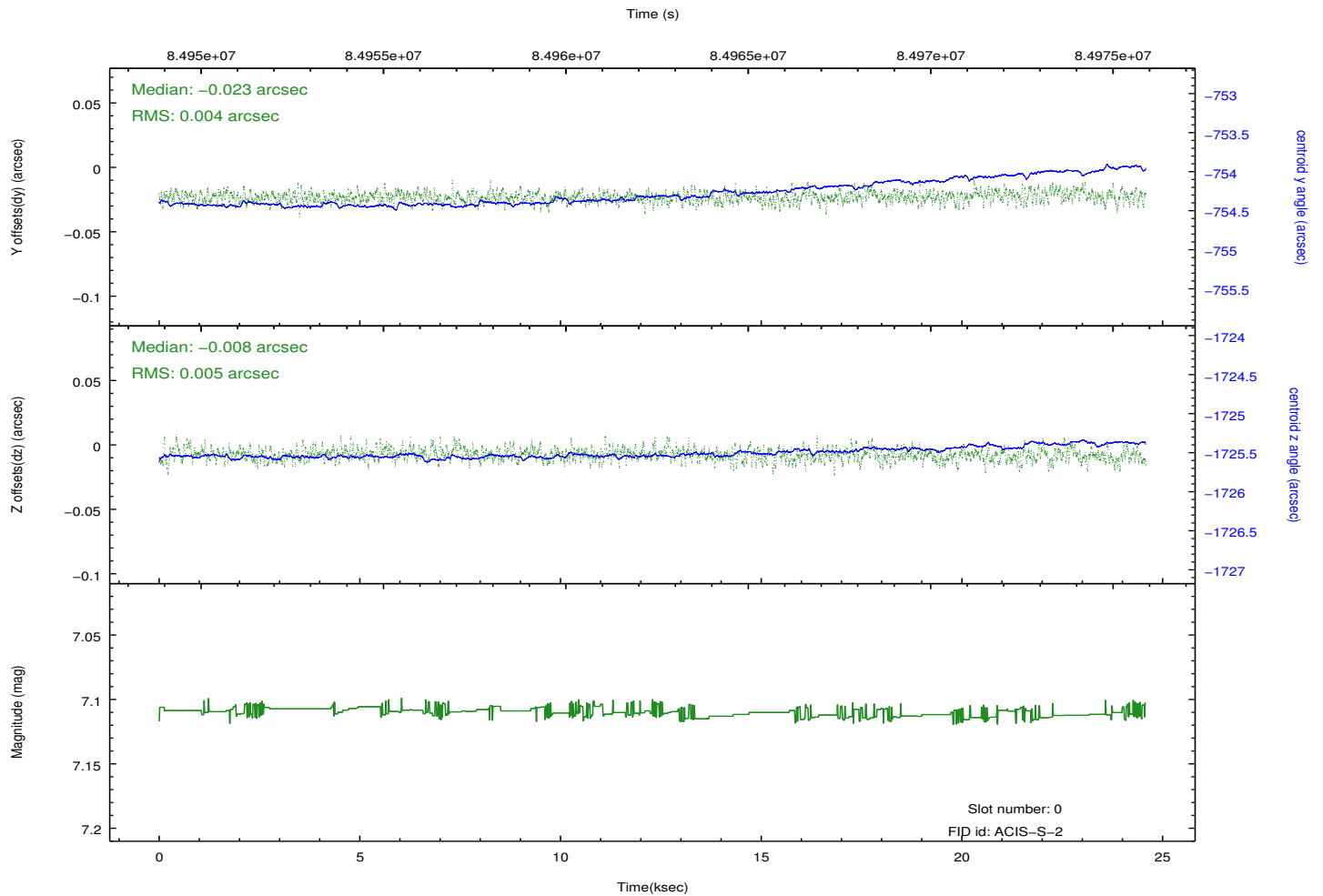
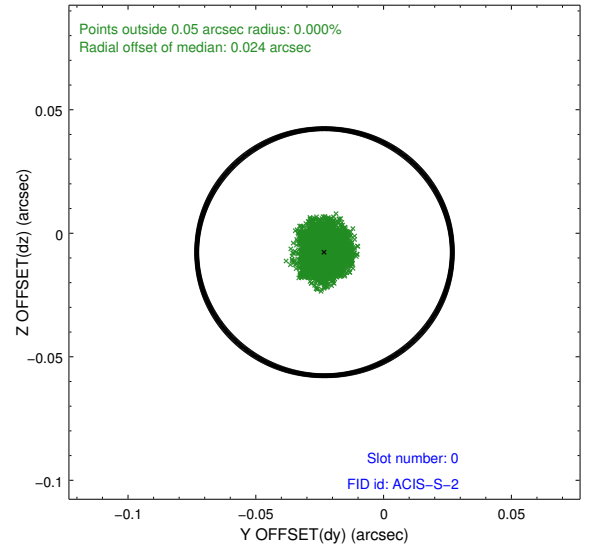
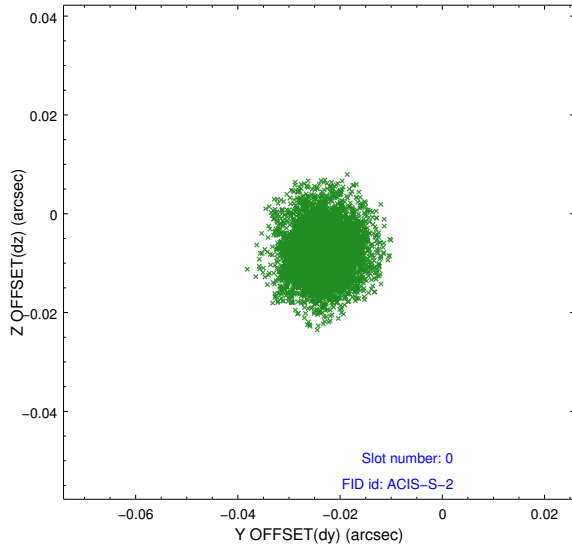


2.4.5 Slot 7

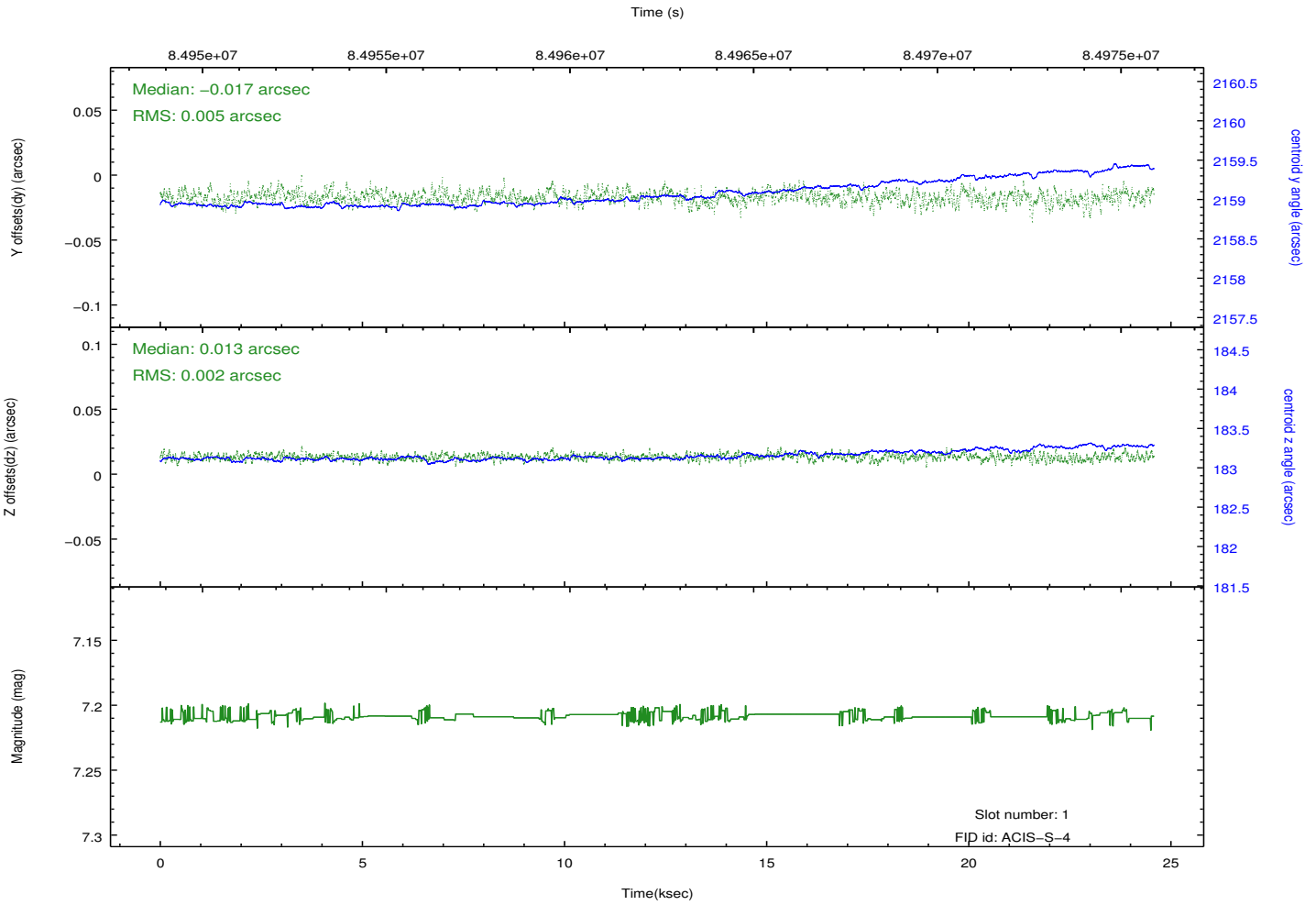
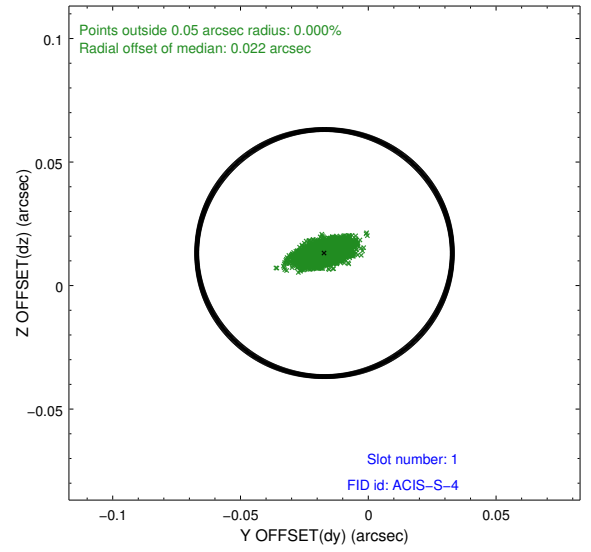
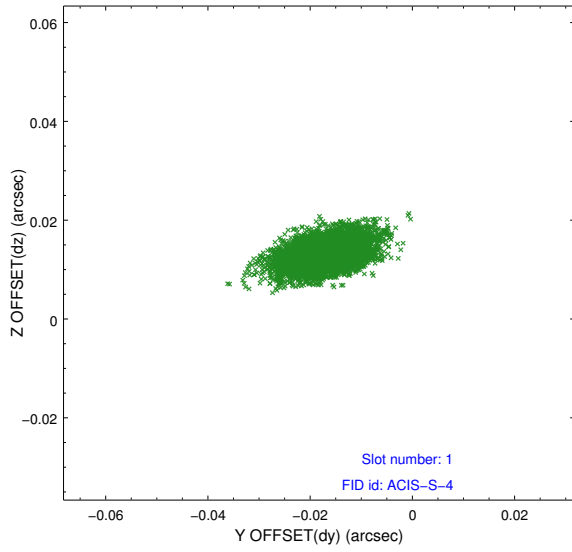


2.5 FID Slots

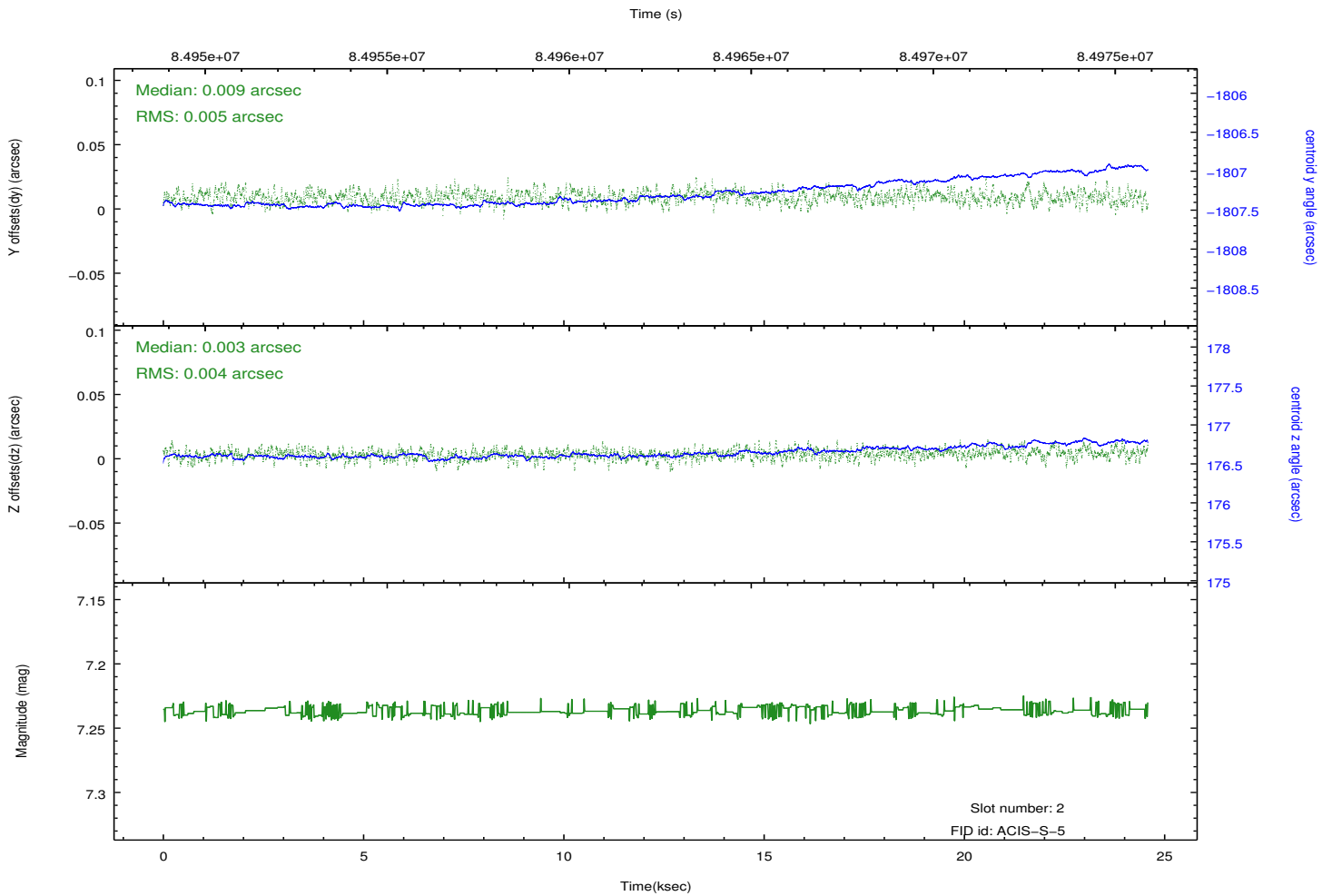
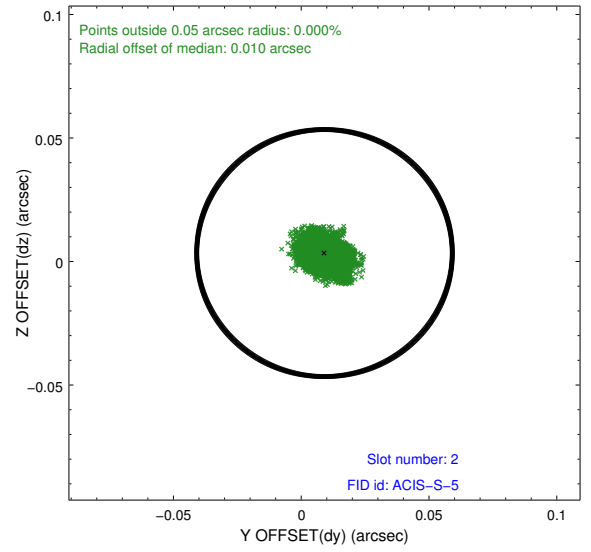
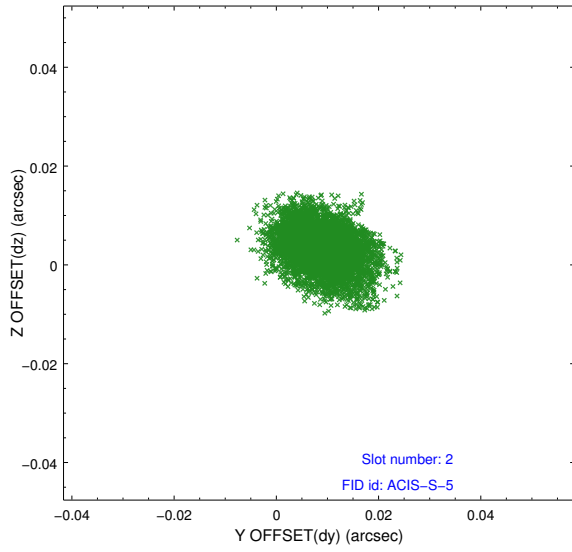
2.5.1 Slot 0



2.5.2 Slot 1



2.5.3 Slot 2



A Summary

A.1 Status

V&V Scientist	Jen Lauer
V&V Date (YYYY-MM-DD)	2012.09.10
V&V Edition	1
V&V Disposition and Status	OK
V&V Charge Time	24.582

A.2 Comments