

# V&V Reference Report

## L2 ASCDS Version : 8.4.3

Observation 6561 - L2 Version 3  
Chandra X-Ray Center

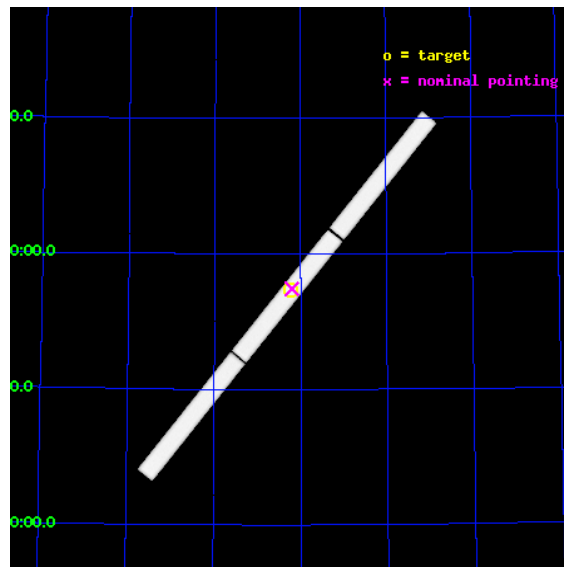
L2 Processing Date : Aug 11 2012

## Contents

<b>1</b>	<b>Front</b>	<b>2</b>
<b>2</b>	<b>OBI</b>	<b>3</b>
2.1	OBI . . . . .	3
2.1.1	Images . . . . .	3
2.1.2	Parameters . . . . .	4
2.1.3	Events . . . . .	4
2.2	Compared Parameters . . . . .	5
2.3	Aspect . . . . .	6
2.4	Star Slots . . . . .	9
2.4.1	Slot 3 . . . . .	9
2.4.2	Slot 4 . . . . .	10
2.4.3	Slot 5 . . . . .	11
2.4.4	Slot 6 . . . . .	12
2.4.5	Slot 7 . . . . .	13
2.5	FID Slots . . . . .	14
2.5.1	Slot 0 . . . . .	14
2.5.2	Slot 1 . . . . .	15
2.5.3	Slot 2 . . . . .	16
<b>3</b>	<b>Gratings</b>	<b>17</b>
3.1	LETG Arm . . . . .	17
<b>A</b>	<b>Summary</b>	<b>19</b>
A.1	Status . . . . .	19
A.2	Comments . . . . .	19

# 1 Front

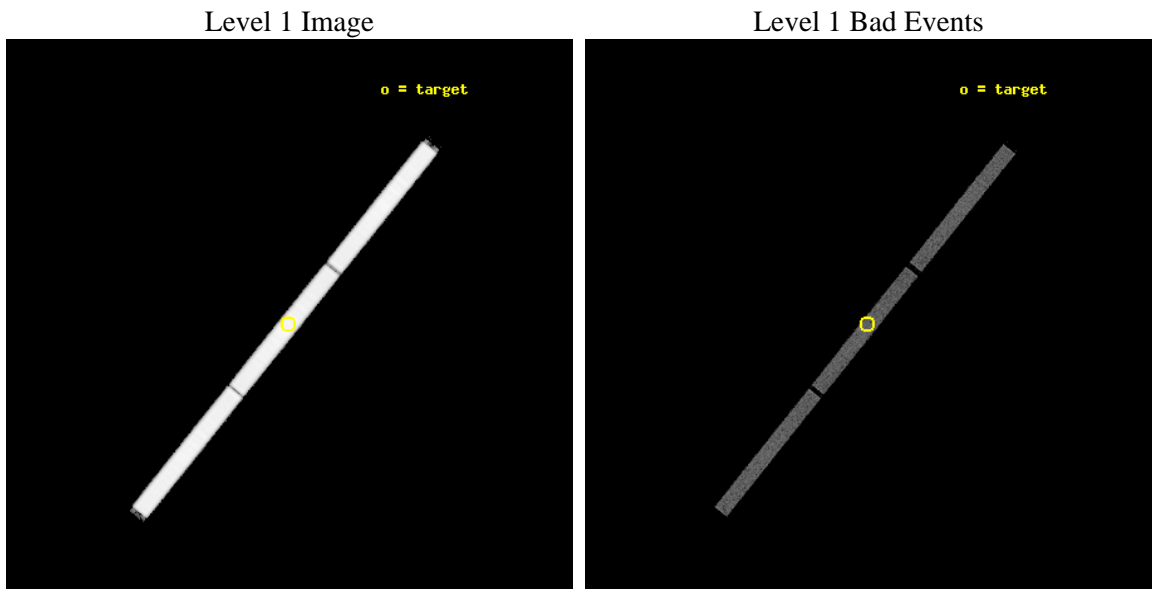
seq_num	300165	Sequence number
obs_id	6561	Observation id
title	The time resolved Chandra LETGS plasma diagnostics of the cataclysmic variable AM Herculis	Proposal title
observer	Dr. Peter Predehl	Principal investigator
object	AM Her	Source name
ra_targ	274.055417	Observer's specified target RA [deg]
dec_targ	49.867833	Observer's specified target Dec [deg]
ra_nom	274.05103058028	Nominal RA [deg]
dec_nom	49.871601751501	Nominal Dec [deg]
roll_nom	128.75203144217	Nominal Roll [deg]
revision	3	Processing version of data
ontime	25169.132423908	[s]
livetime	24950.796404573	Ontime multiplied by DTCOR
l2events	1785498	Number of level 2 events



## 2 OBI

### 2.1 OBI

#### 2.1.1 Images



## 2.1.2 Parameters

obi_num	0	Obi number	sched_exp_time	25000.000000	[s] Scheduled observation exposure time
ascdsver	8.4.5	Processing system revision	ontime	25169.132423908	[s]
caldbver	4.5.1.1	&#160	l1events	2512883	Number of level 1 events
date	2012-08-11T07:21:42	Date and time of file creation			
revision	3	Processing version of data			

## 2.1.3 Events

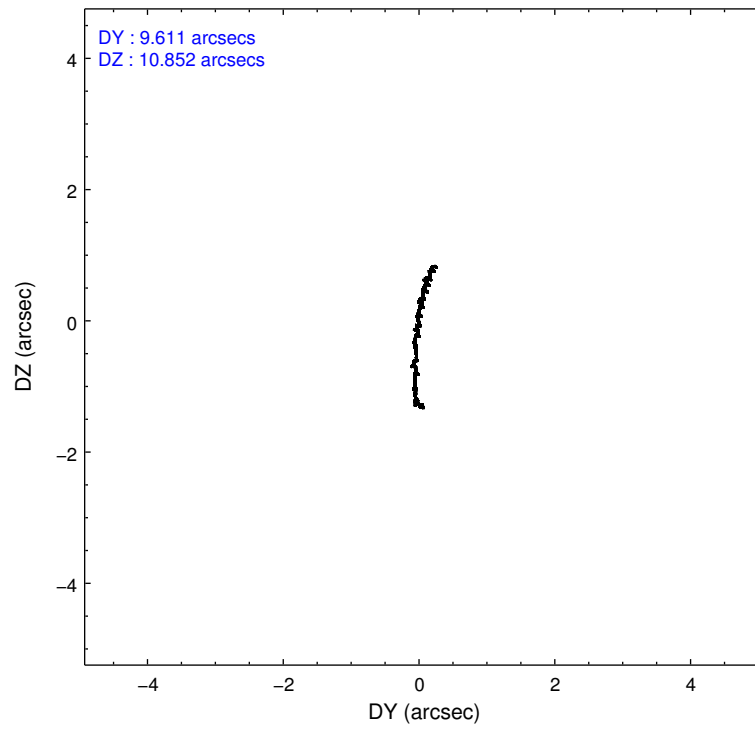
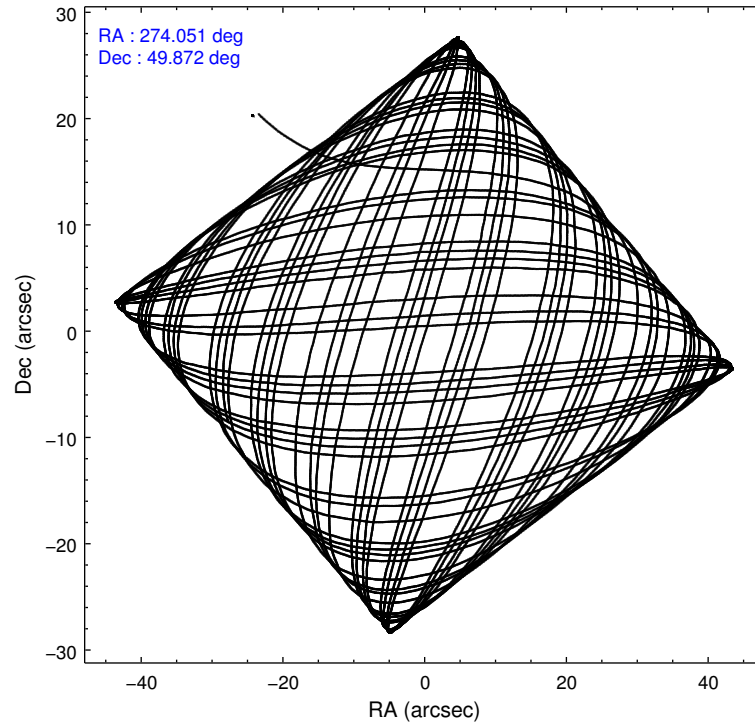
### Level 1 Events

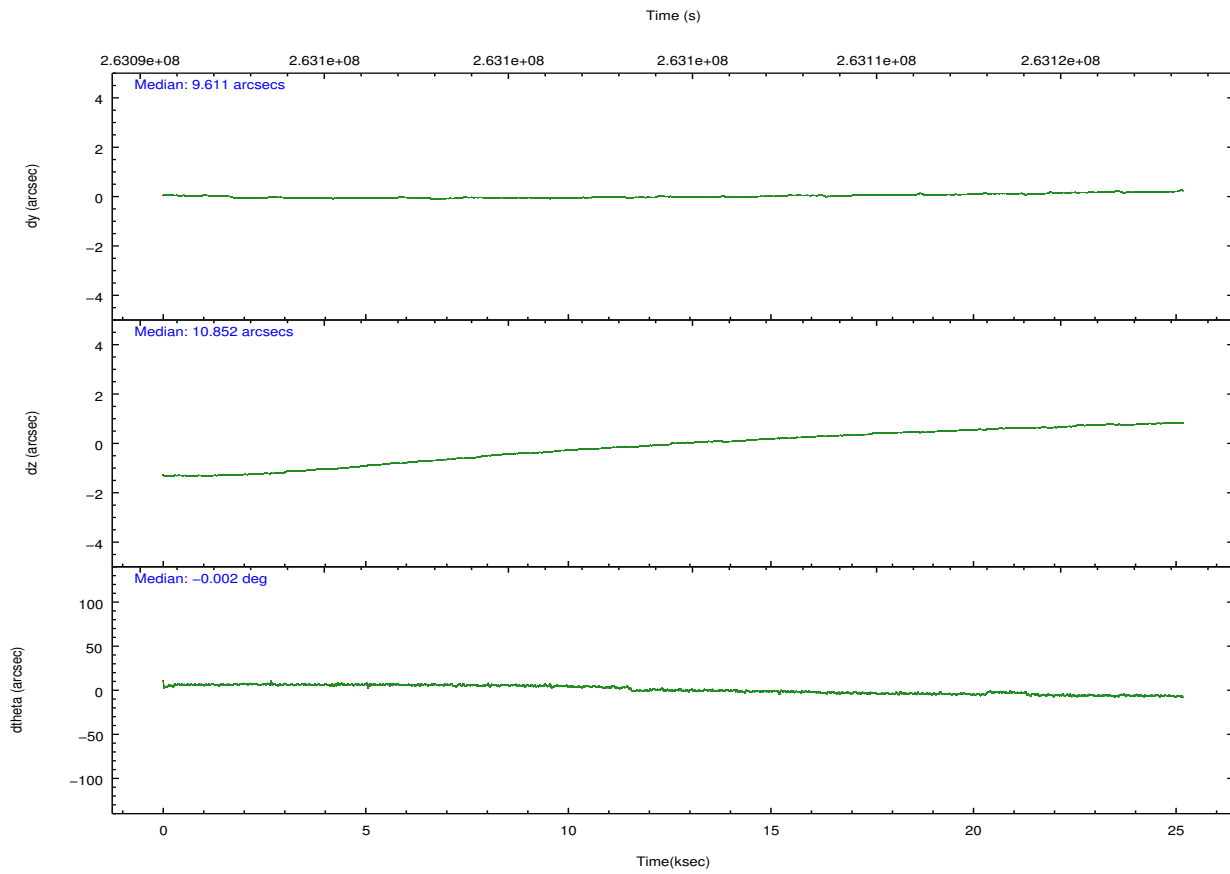
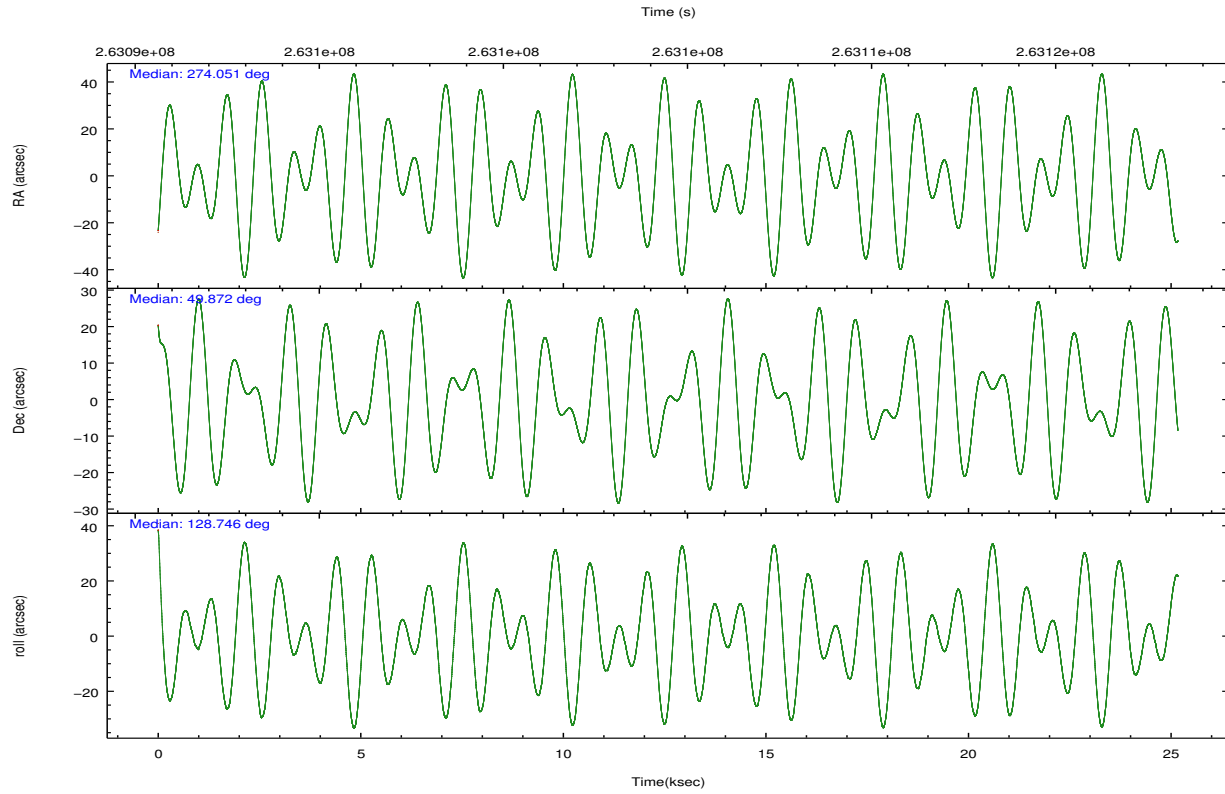
	<b>segment 1</b>	<b>segment 2</b>	<b>segment 3</b>
level 1 events	840591	825666	846626
rejected events	40222	39066	40286
rejected %	4%	4%	4%

## 2.2 Compared Parameters

Parameter	Planned	Actual	Parameter	Planned	Actual
Instrument	HRC	HRC	Obspar format version number	7	7
Detector	HRC-S	HRC-S	Obspar file type	PREDICTED	ACTUAL
Grating	LETG	LETG	Obspar update status	NONE	UPDATED
Data mode	OBSERVING	OBSERVING			
Observation mode	POINTING	POINTING			
[deg] Pointing RA	274.093136	274.0510305802784			
[deg] Pointing Dec	49.862529	49.87160175150116			
[deg] Pointing Roll	128.652499	128.7520314421713			
[mm] SIM focus pos	-1.429586	-1.428180813131781			
[mm] SIM defocus	0.1037507710433287	0.1051558262725154			
[mm] SIM translation stage pos	250.455976	250.466033080201			
[mm] SIM translation stage offset	0	-0.01005468664627074			
[s] Observation start time (MET)	263092056.184000	263091215.1351			
Observation start date	2006-05-04T01:06:31	2006-05-04T00:53:35			
[s] Observation end time (MET)	263117056.184000	263117645.27383			
Observation end date	2006-05-04T08:03:11	2006-05-04T08:14:05			

## 2.3 Aspect



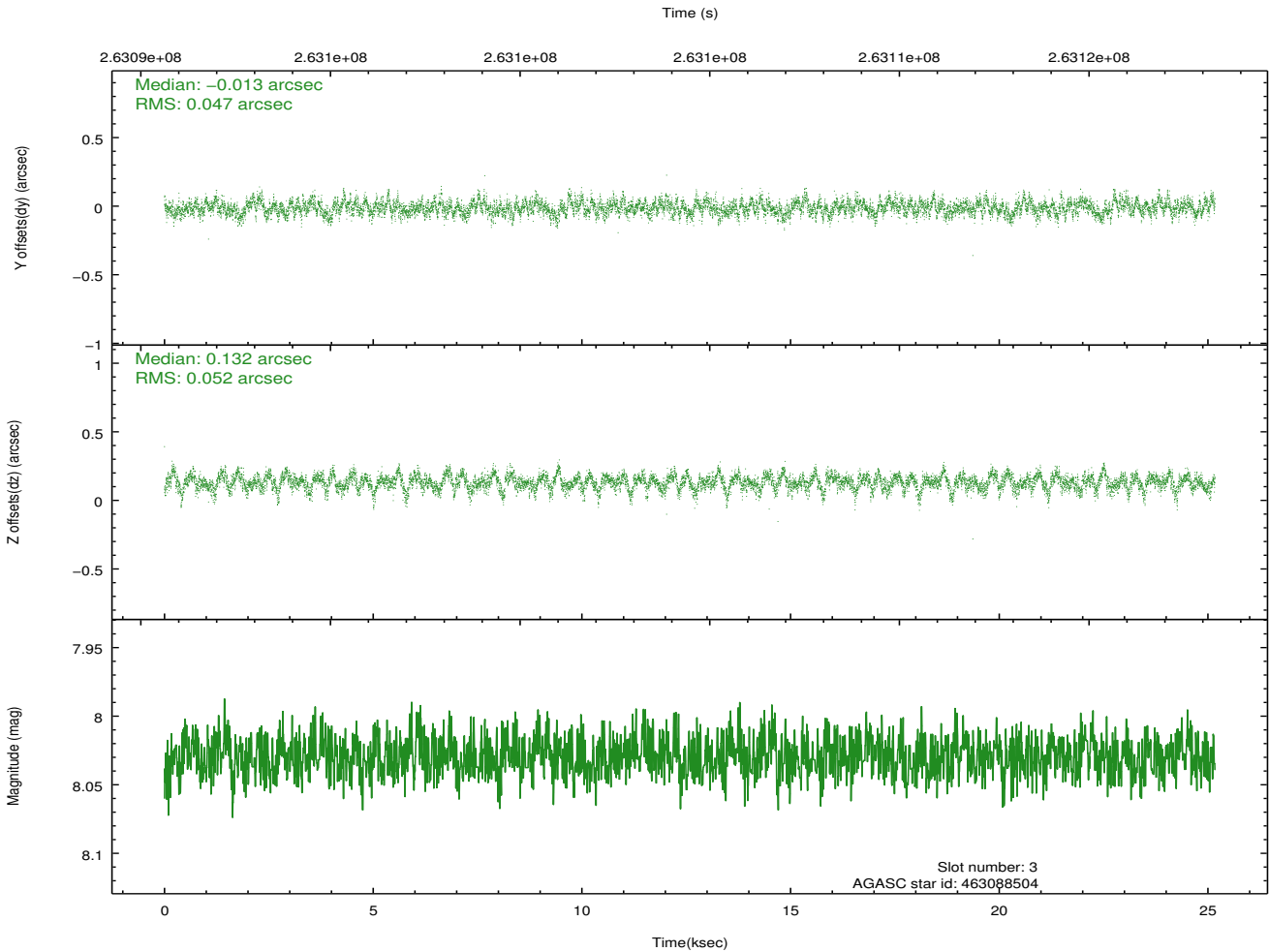
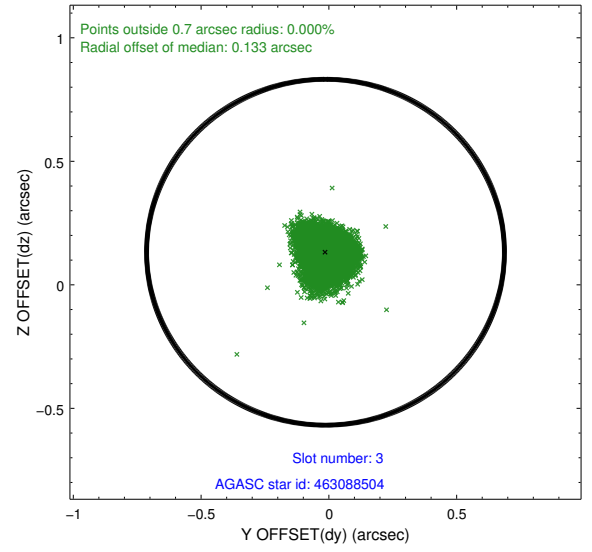
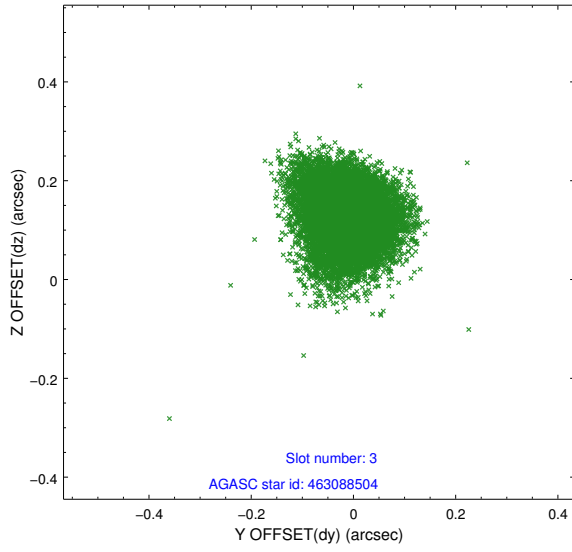


### Slot Statistics

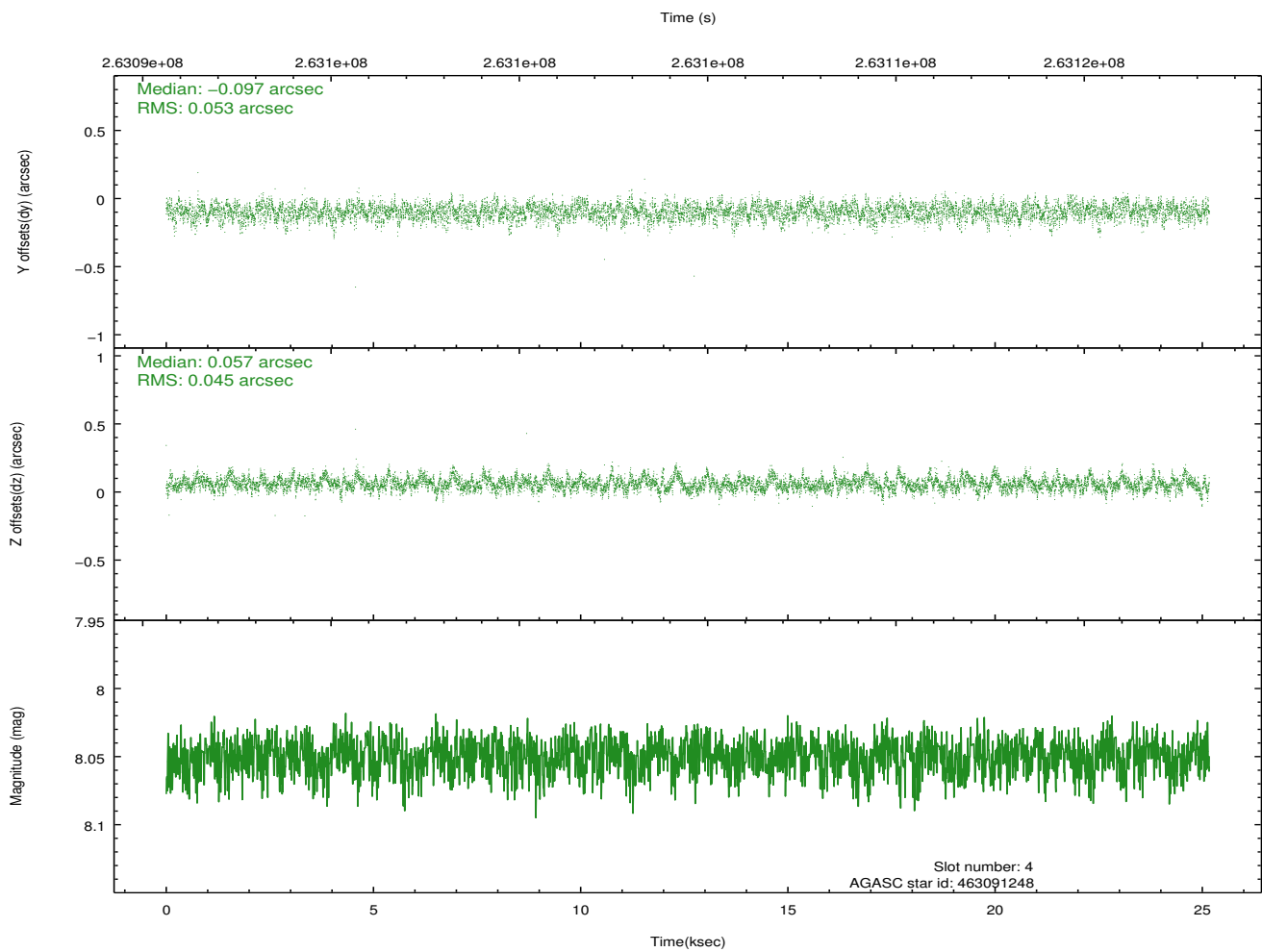
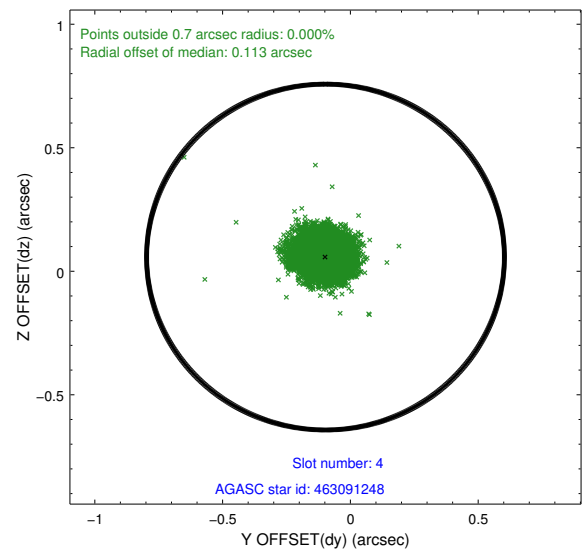
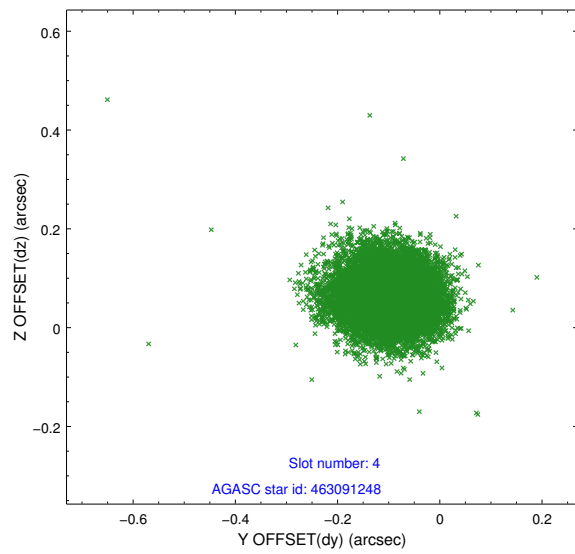
slot	status	id	mag	n_pts	med_dy	med_dz	dr1	dr2	ra	dec	mean_y	mean_z
0	FID	HRC-S-2	7.00	6140	0.140	-0.152	0.027	0.056	0.000000	0.000000	1235.82	-452.09
1	FID	HRC-S-3	7.02	6139	0.079	-0.096	0.015	0.023	0.000000	0.000000	-1166.41	570.13
2	FID	HRC-S-4	6.97	6139	0.188	-0.045	0.029	0.061	0.000000	0.000000	1234.29	572.82
3	GUIDE	463088504	8.03	12272	-0.013	0.132	0.073	0.122	273.676468	50.243700	1672.93	-109.01
4	GUIDE	463091248	8.05	12278	-0.097	0.057	0.073	0.120	274.115888	50.616558	2087.93	-1735.55
5	GUIDE	463084696	9.05	12275	0.080	-0.239	0.132	0.221	273.211558	49.626674	630.56	2128.22
6	GUIDE	463092584	7.94	12192	-0.040	0.101	0.083	0.139	274.013753	50.532643	1997.76	-1364.30
7	GUIDE	463095992	7.13	12278	0.075	-0.050	0.066	0.105	274.225415	49.094564	-2353.33	1483.03

## 2.4 Star Slots

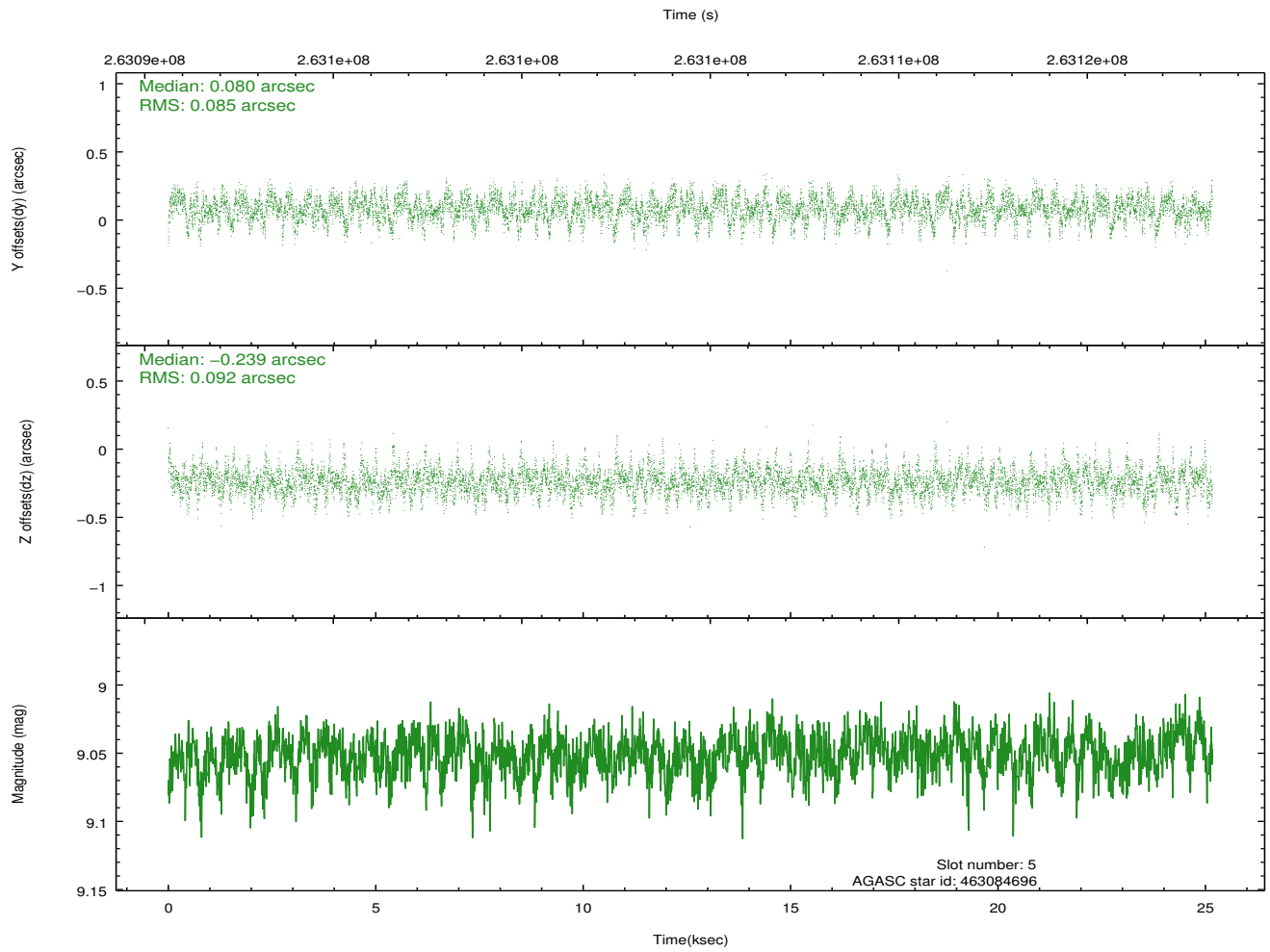
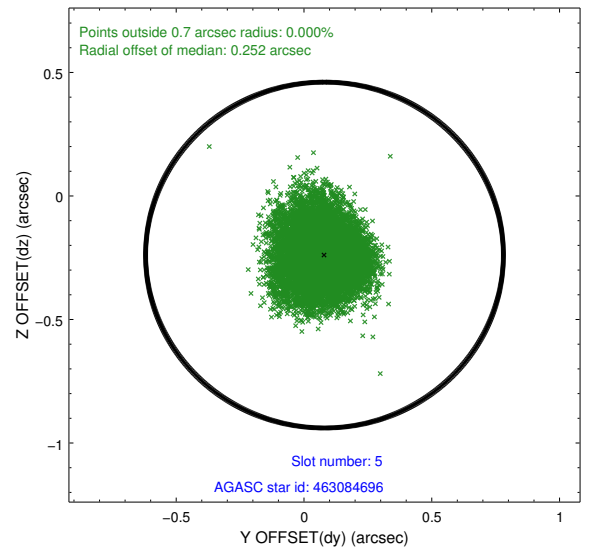
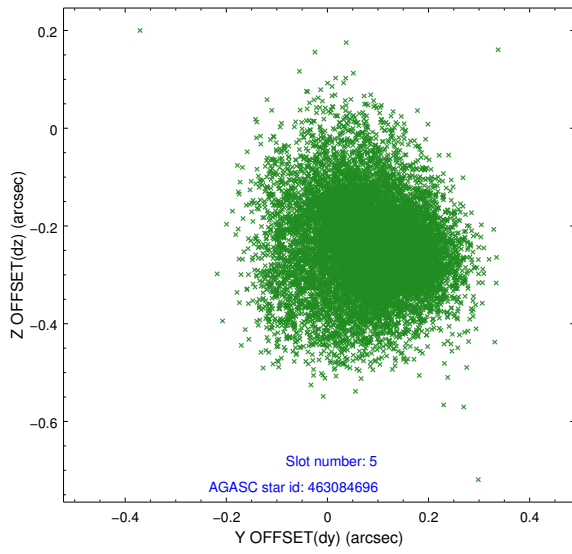
### 2.4.1 Slot 3



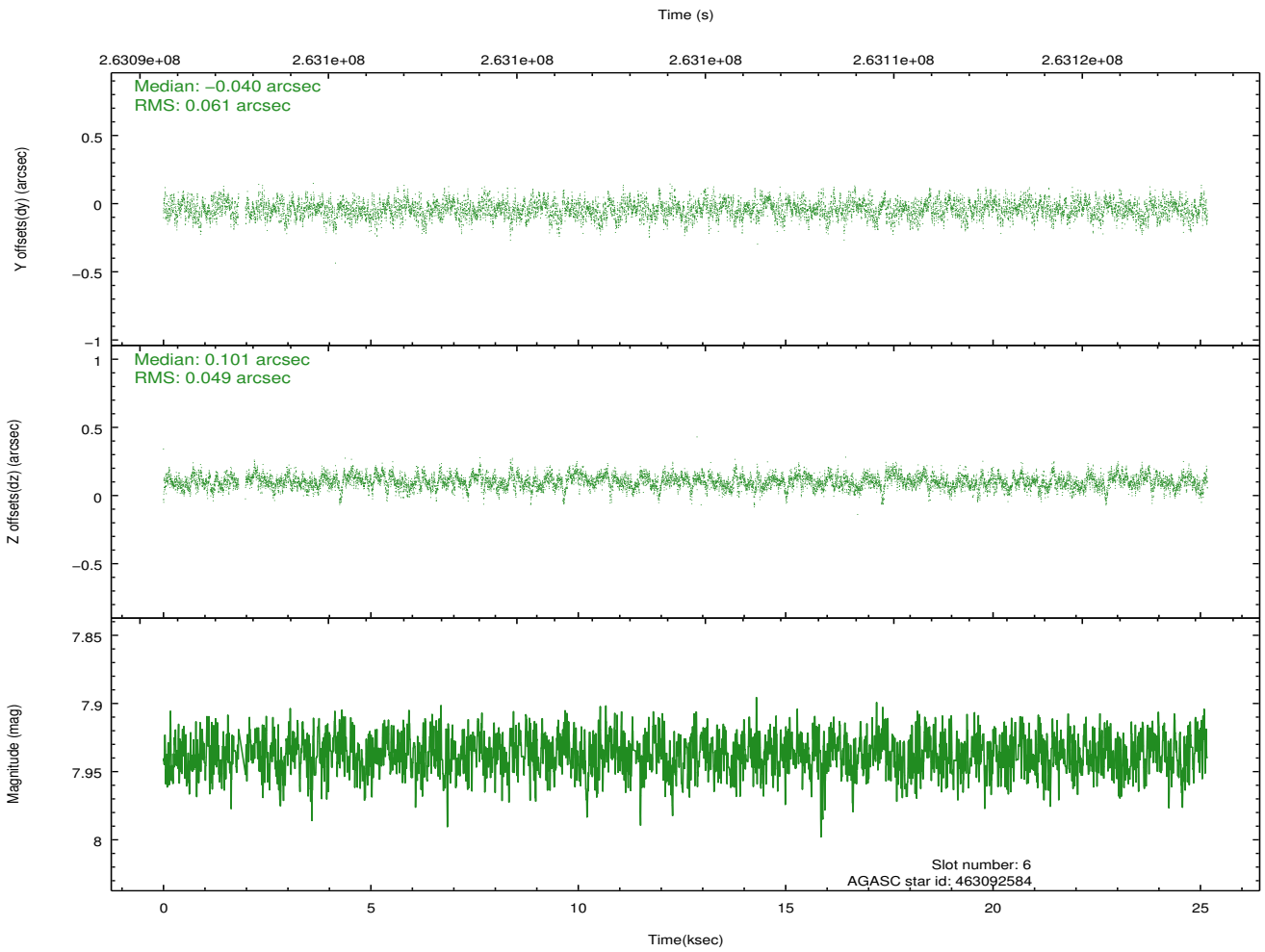
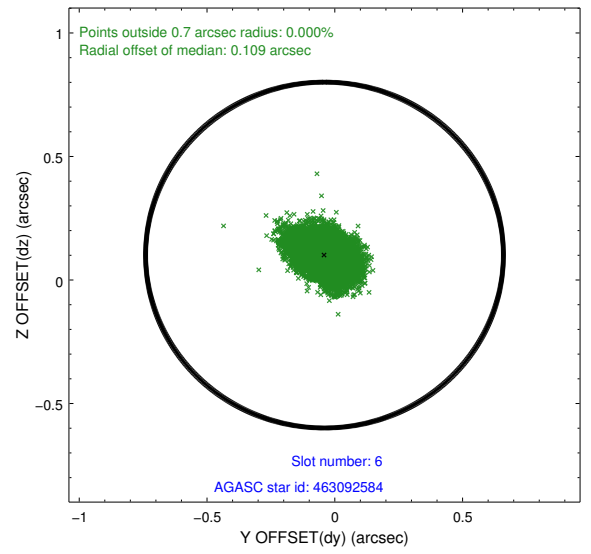
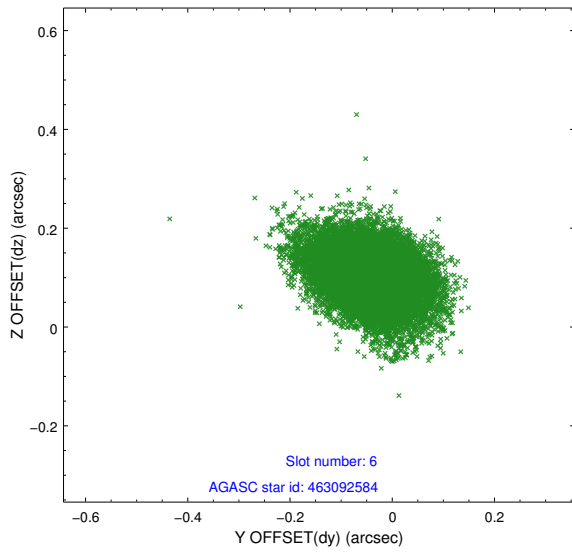
## 2.4.2 Slot 4



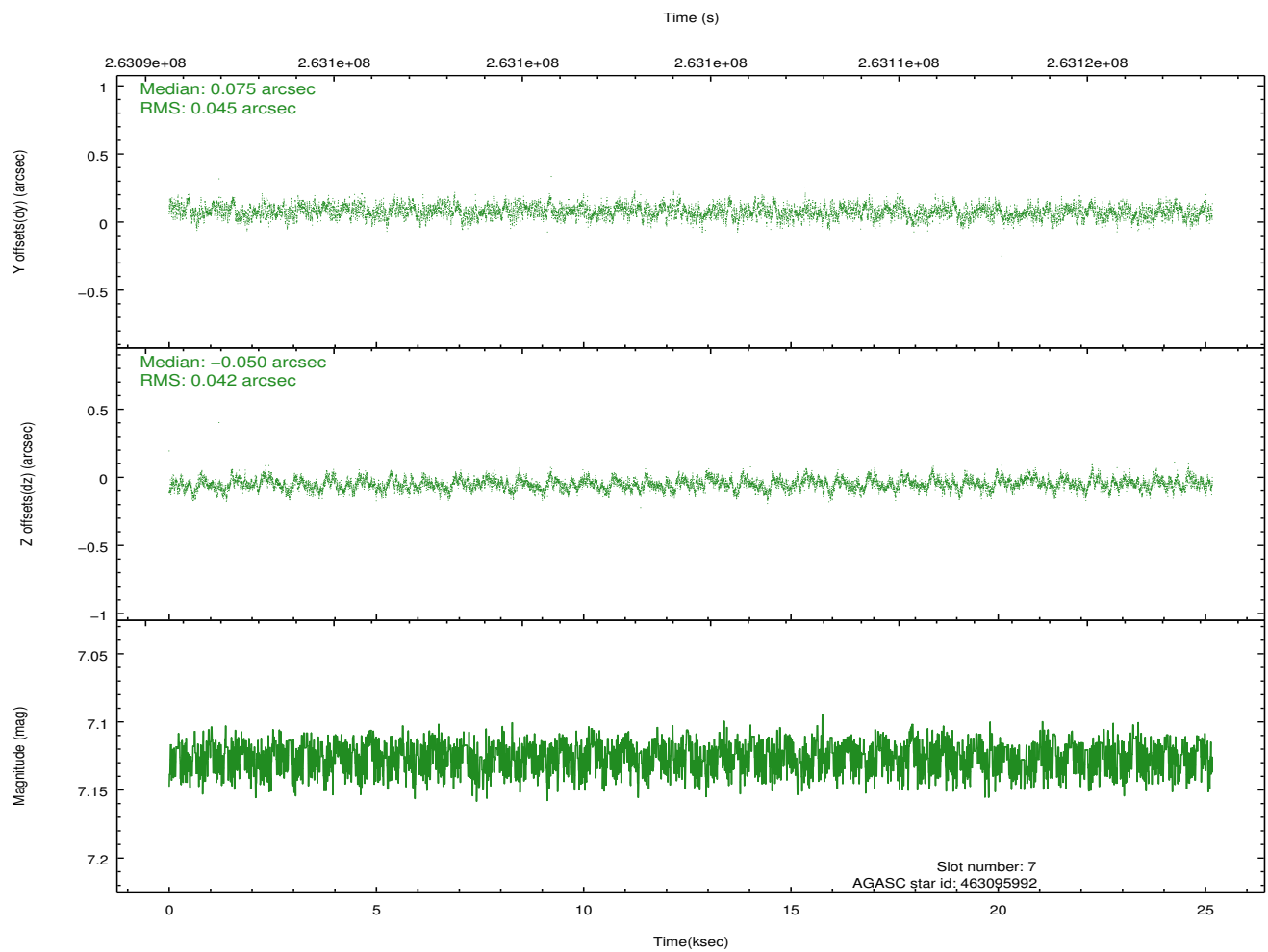
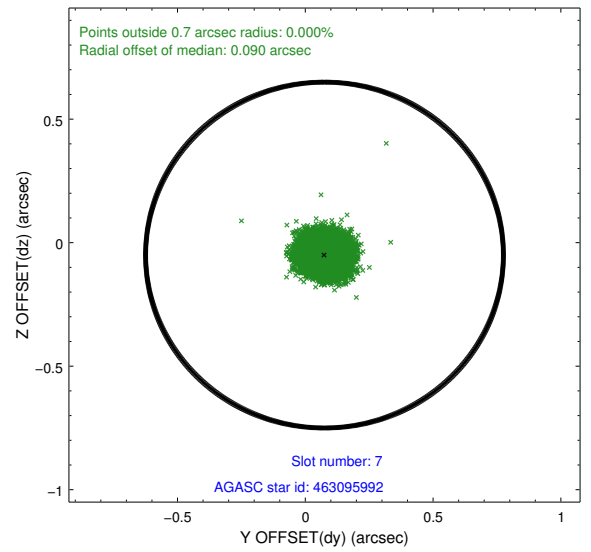
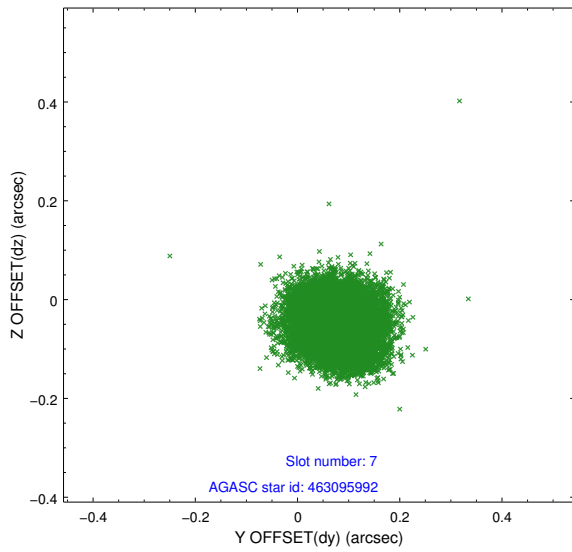
### 2.4.3 Slot 5



## 2.4.4 Slot 6

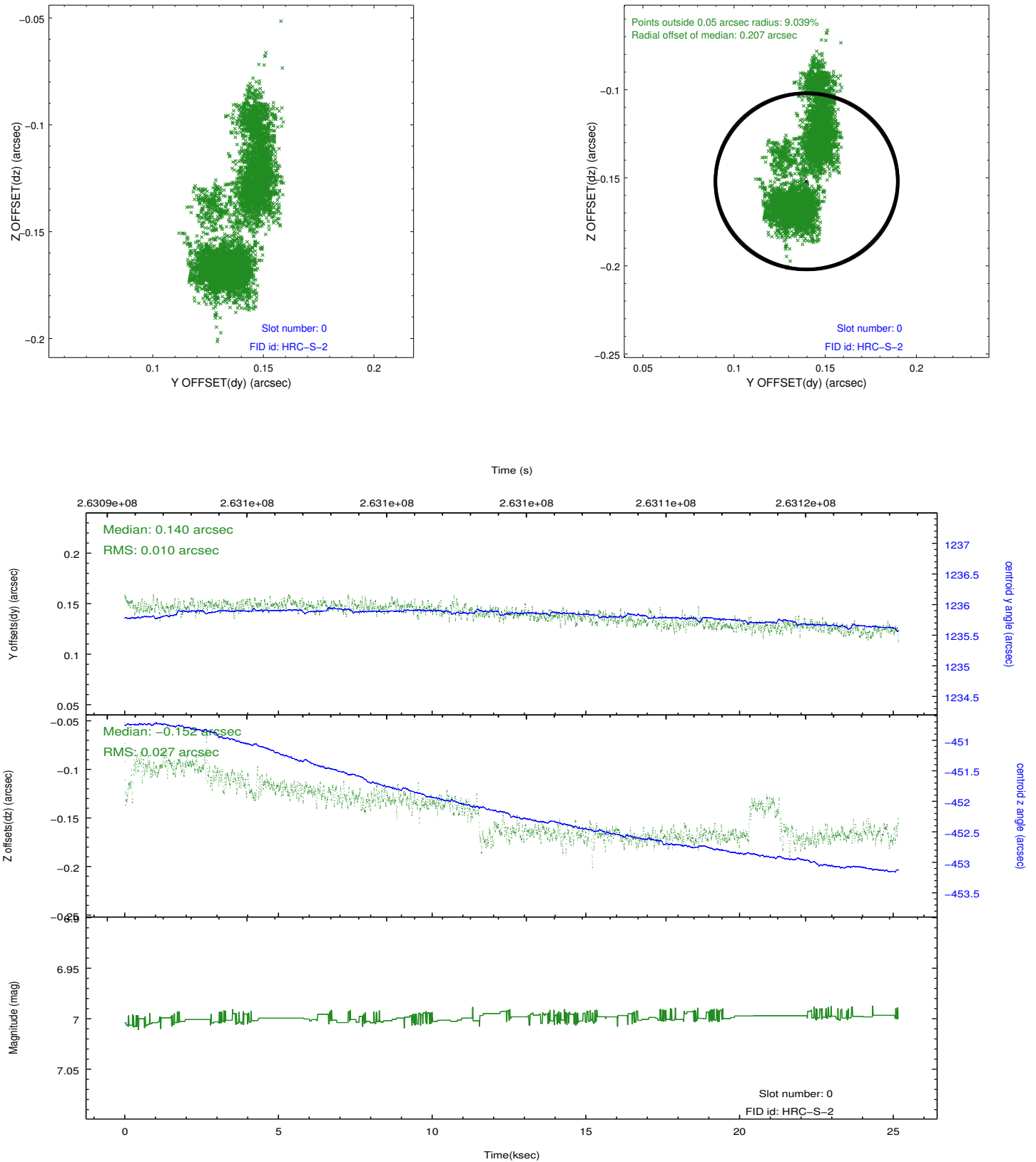


## 2.4.5 Slot 7

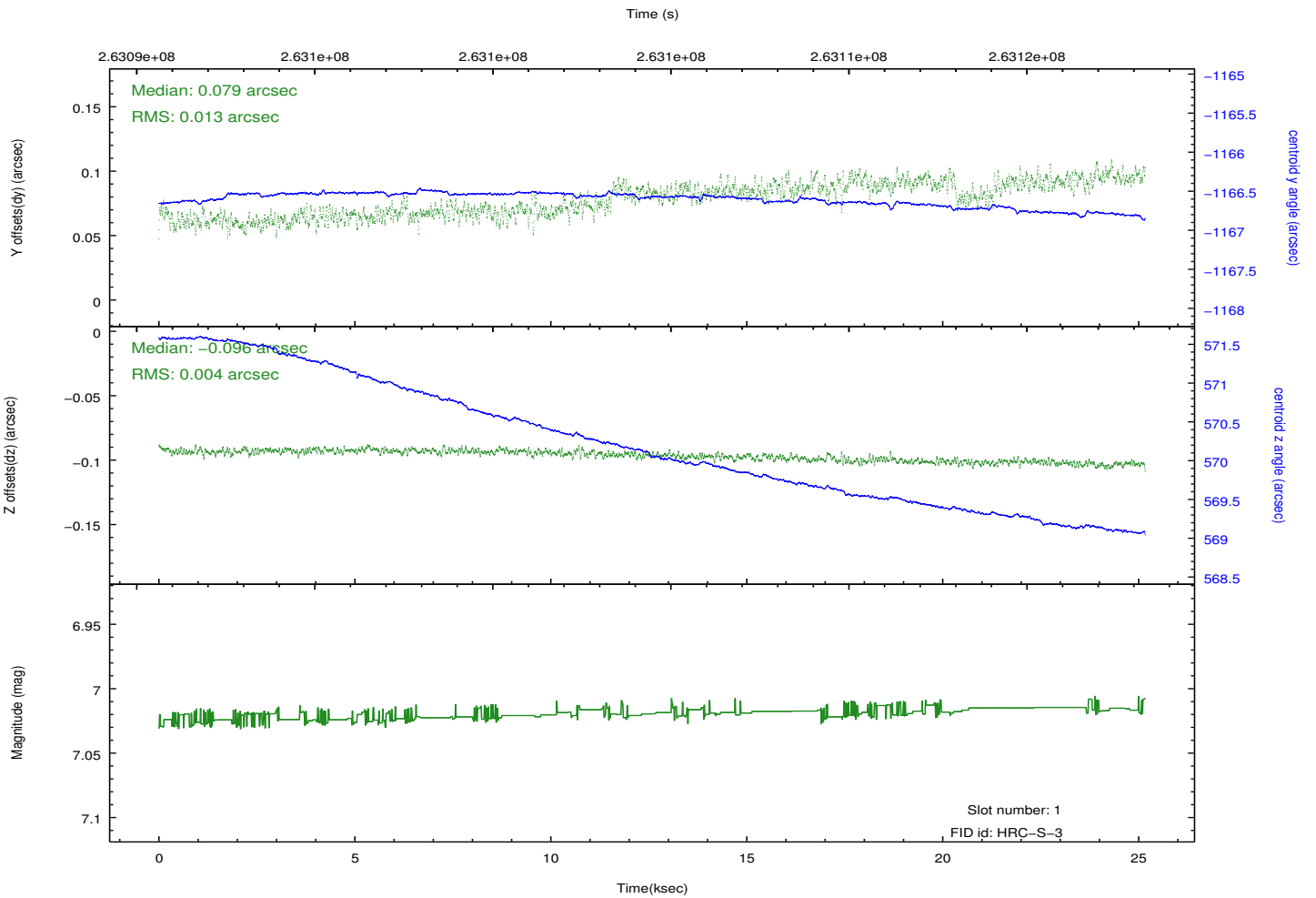
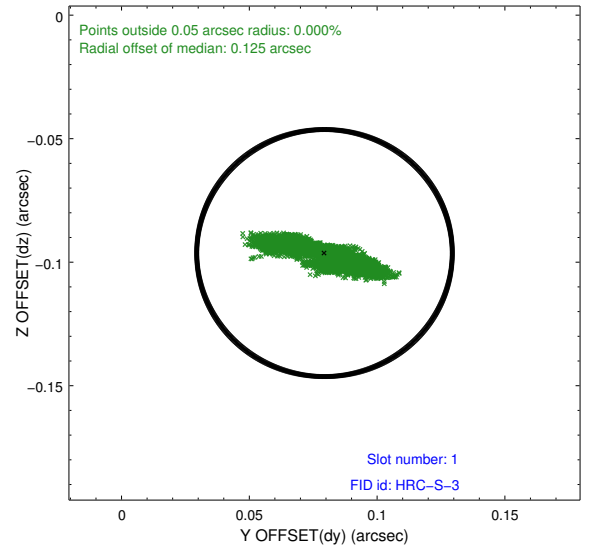
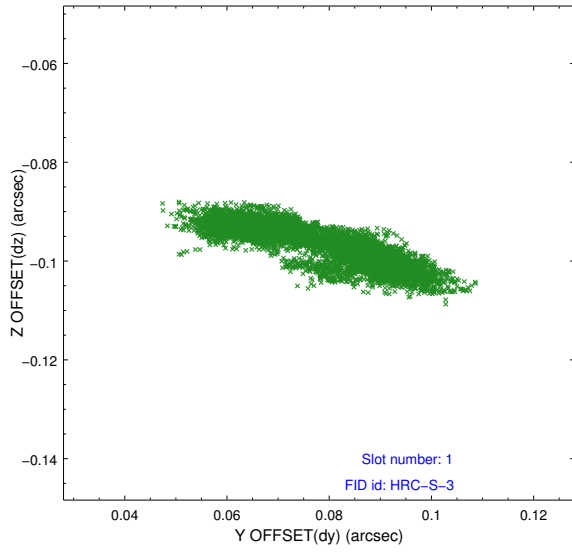


## 2.5 FID Slots

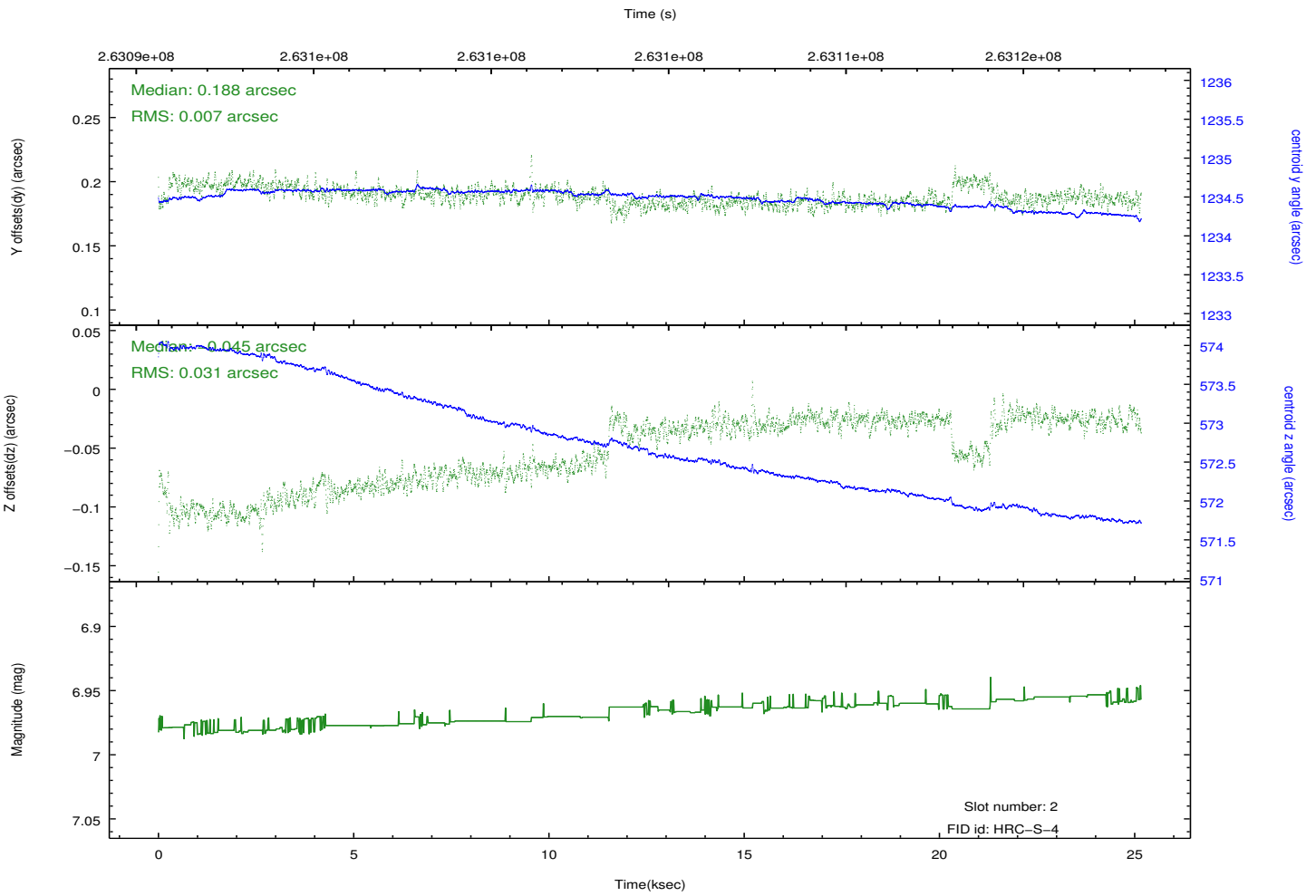
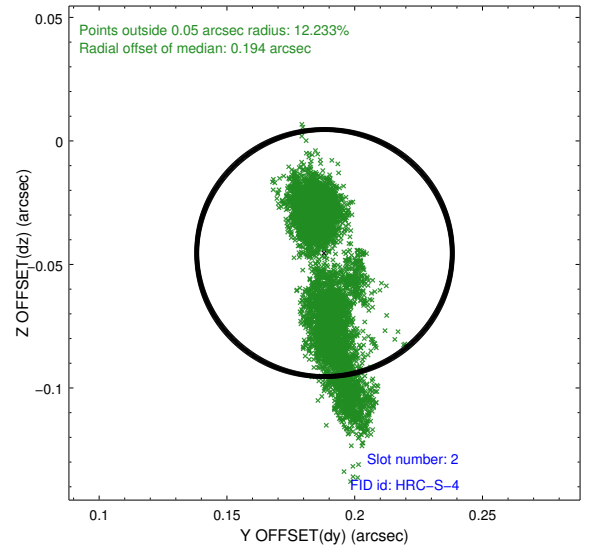
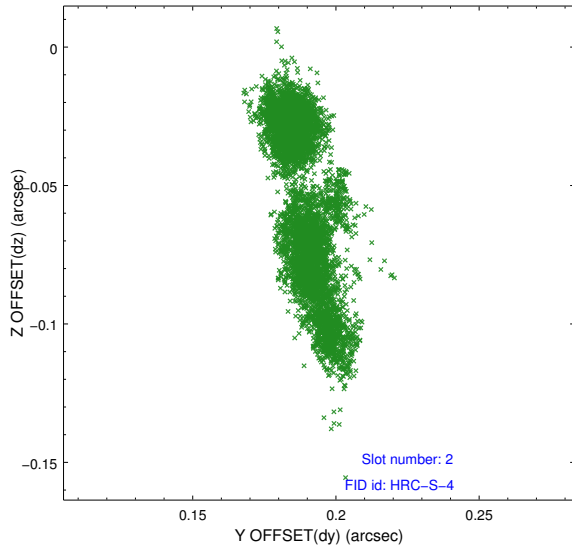
### 2.5.1 Slot 0



## 2.5.2 Slot 1

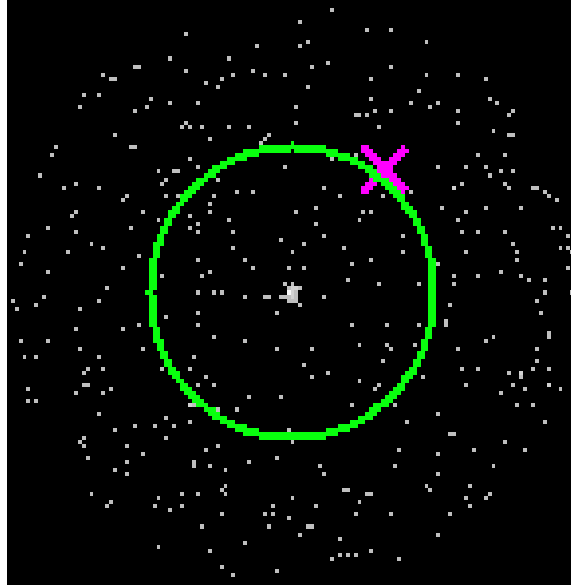


### 2.5.3 Slot 2

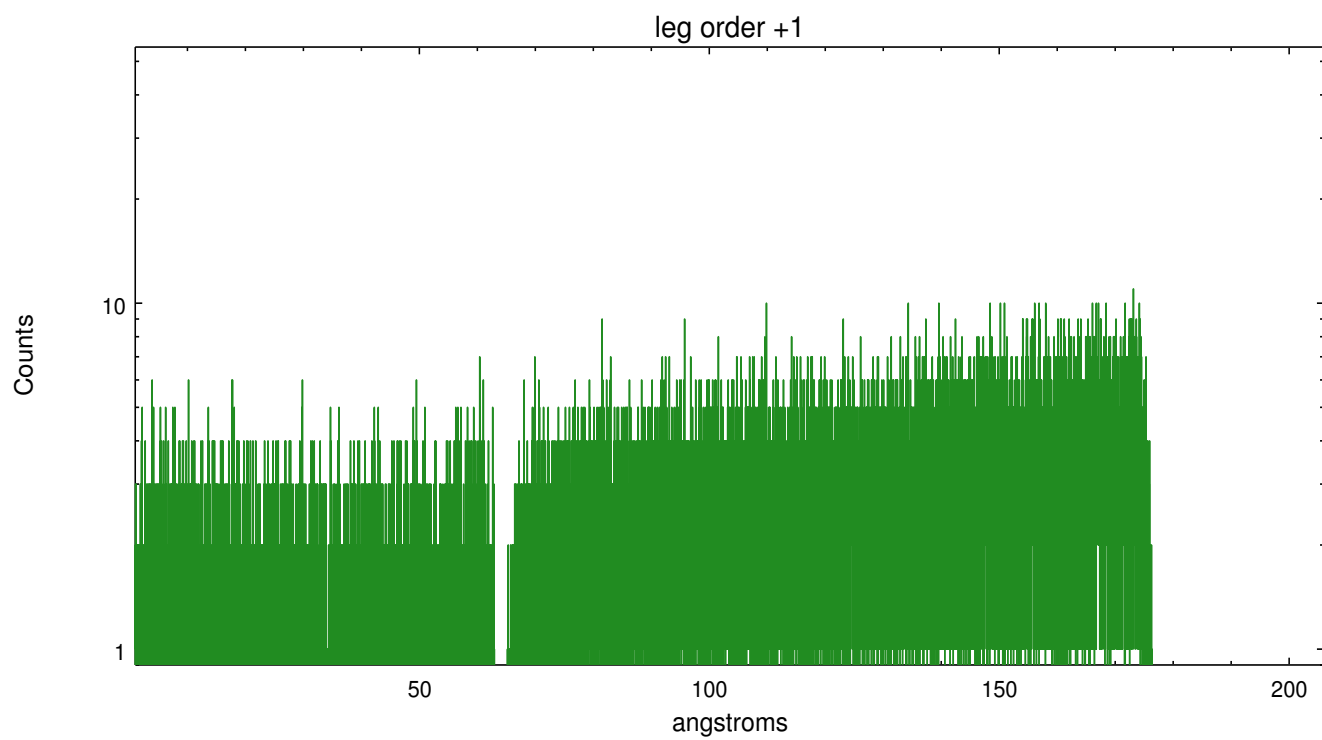
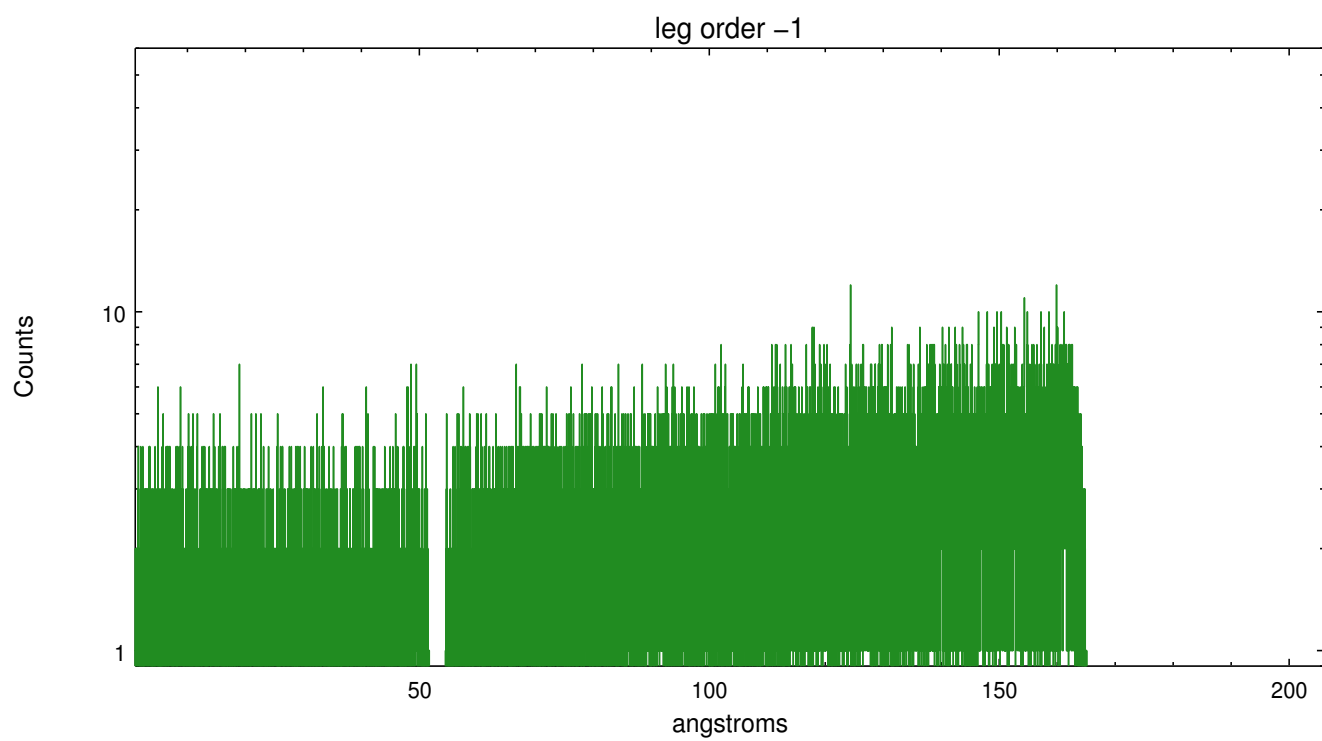


### 3 Gratings

#### 3.1 LETG Arm



LETG Zero Order



# A Summary

## A.1 Status

V&V Scientist	Joy Nichols
V&V Date (YYYY-MM-DD)	2012.08.14
V&V Edition	1
V&V Disposition and Status	OK
V&V Charge Time	25.1691324

## A.2 Comments

Source somewhat extended.

Source is relatively faint. AM Her is in a low optical state at this time.