

V&V Reference Report

L2 ASCDS Version : 8.4.3

Observation 6661 - L2 Version 2
Chandra X-Ray Center

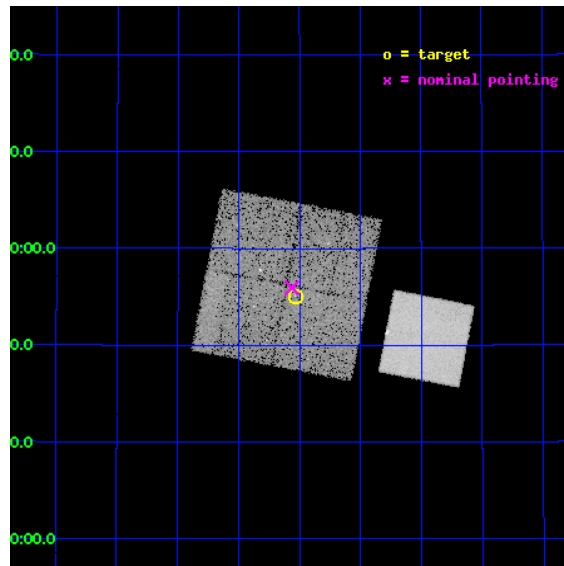
L2 Processing Date : Mar 23 2012

Contents

1	Front	2
2	OBI	3
2.1	OBI	3
2.1.1	Images	3
2.1.2	Bias	3
2.1.3	Parameters	4
2.1.4	Events	4
2.2	Compared Parameters	5
2.3	Aspect	6
2.4	Star Slots	9
2.4.1	Slot 3	9
2.4.2	Slot 4	10
2.4.3	Slot 5	11
2.4.4	Slot 6	12
2.4.5	Slot 7	13
2.5	FID Slots	14
2.5.1	Slot 0	14
2.5.2	Slot 1	15
2.5.3	Slot 2	16
A	Summary	17
A.1	Status	17
A.2	Comments	17

1 Front

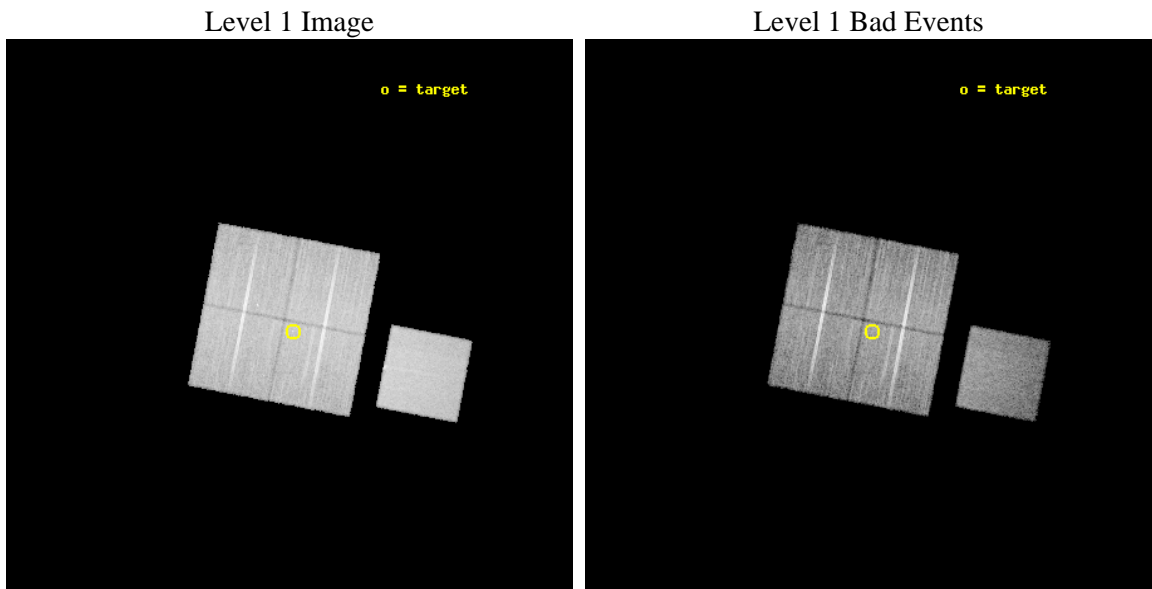
seq_num	500615	Sequence number
obs_id	6661	Observation id
title	Dark Bursts: Signposts for Obscured High Redshift Star Formation Formation	Proposal title
observer	Prof. Edo Berger	Principal investigator
object	GRB060108	Source name
dtcycle	0	
cycle	P	events from which exps? Prim/Second/Both
ra_targ	147.006667	Observer's specified target RA [deg]
dec_targ	31.917944	Observer's specified target Dec [deg]
ra_nom	147.015620603	Nominal RA [deg]
dec_nom	31.932257405261	Nominal Dec [deg]
roll_nom	100.88401406991	Nominal Roll [deg]
revision	2	Processing version of data
ontime	20035.258961201	Sum of GTIs [s]
livetime	19773.48355313	Livetime [s]
ontime0	20038.399961442	Sum of GTIs [s]
ontime1	20038.399961442	Sum of GTIs [s]
ontime2	20038.399961442	Sum of GTIs [s]
ontime3	20035.258961201	Sum of GTIs [s]
ontime7	20038.399961442	Sum of GTIs [s]
l2events	112552	Number of level 2 events



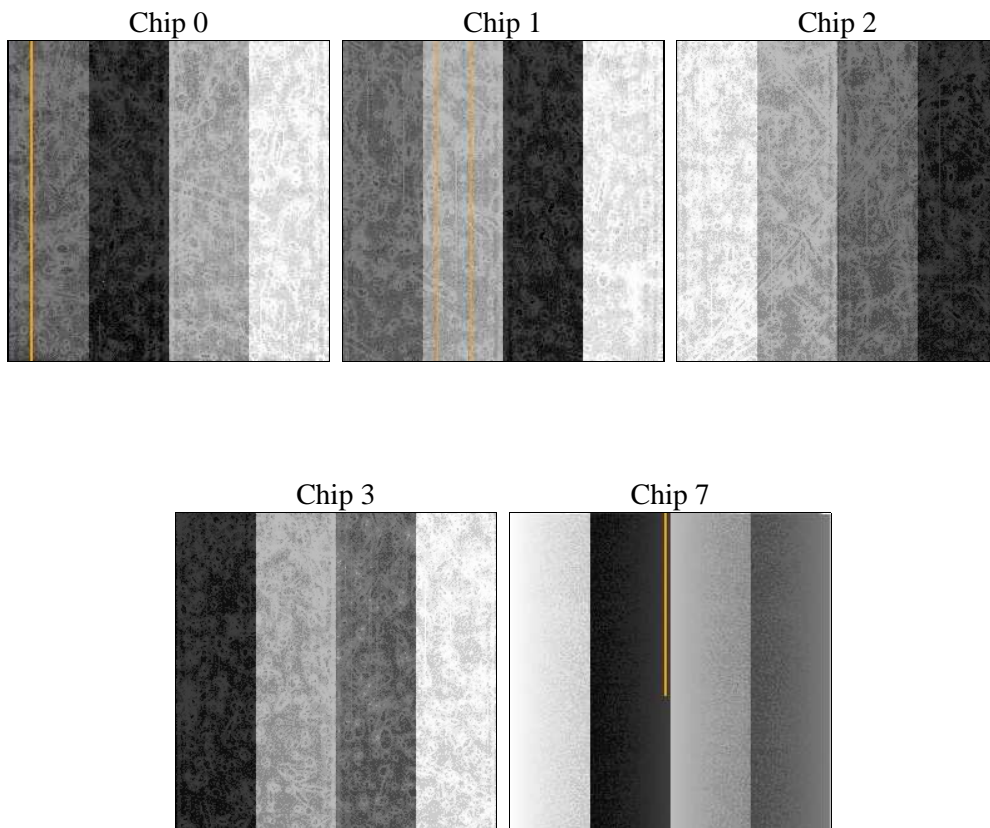
2 OBI

2.1 OBI

2.1.1 Images



2.1.2 Bias



2.1.3 Parameters

obi_num	0	Obi number	sched_exp_time	20000.000000	[s] Scheduled observation exposure time
ascdsver	8.4.3	Processing system revision	ontime	20035.258961201	Sum of GTIs [s]
caldbver	4.4.8	 	ontime0	20038.399961442	Sum of GTIs [s]
date	2012-03-23T14:12:29	Date and time of file creation	ontime1	20038.399961442	Sum of GTIs [s]
revision	2	Processing version of data	ontime2	20038.399961442	Sum of GTIs [s]
			ontime3	20035.258961201	Sum of GTIs [s]
			ontime7	20038.399961442	Sum of GTIs [s]
			l1events	698830	Number of level 1 events

2.1.4 Events

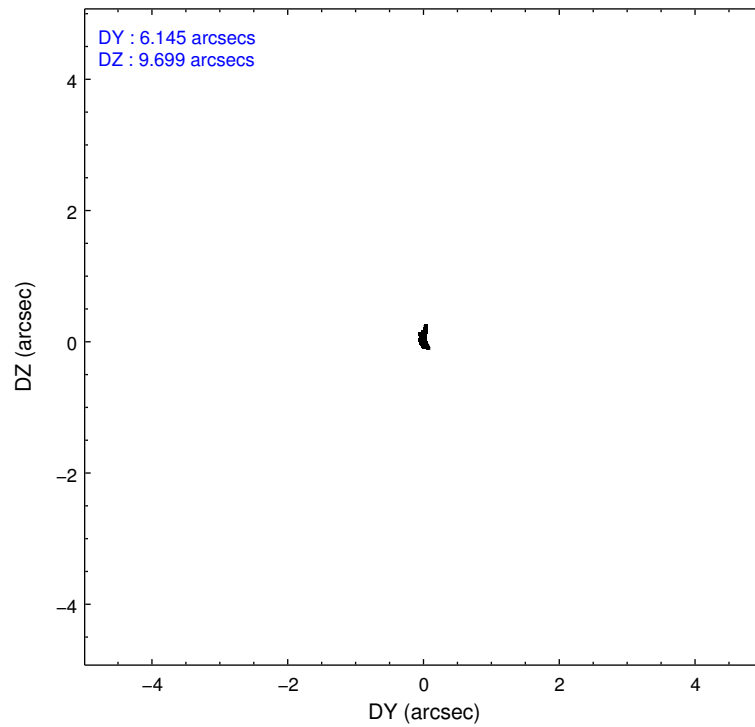
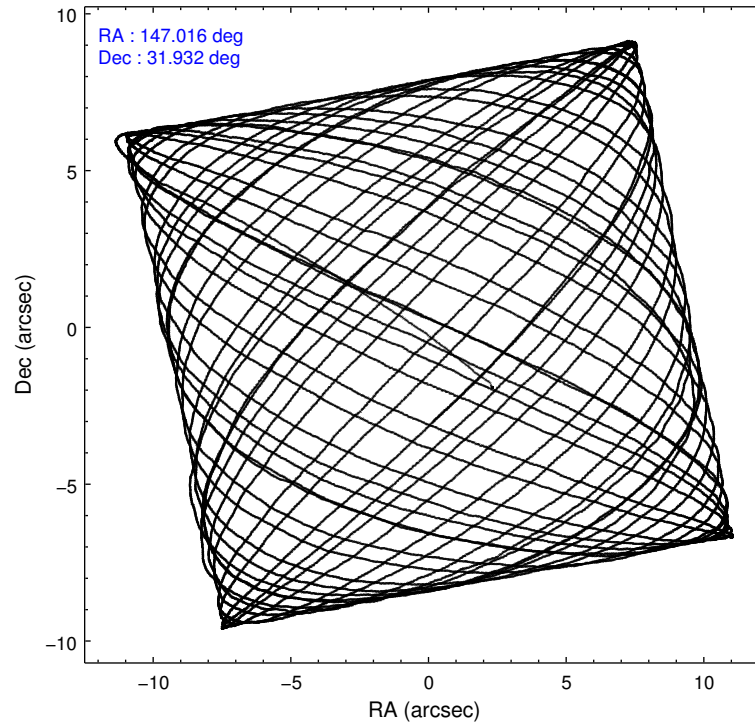
	ccd 0	ccd 1	ccd 2	ccd 3	ccd 7
level 1 events	130550	129872	147056	137958	153394
rejected events	116847	114353	133890	124970	84246
rejected %	89%	88%	91%	90%	54%

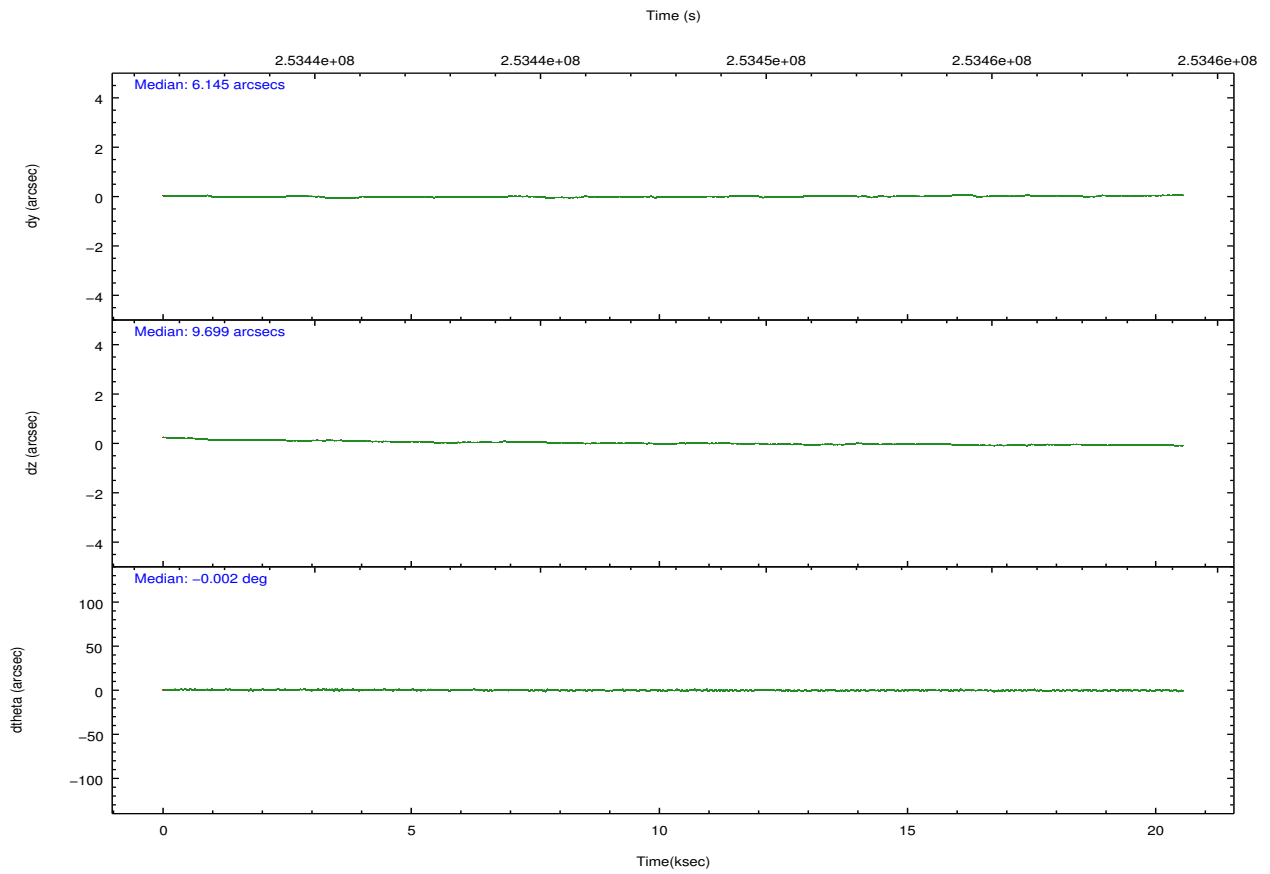
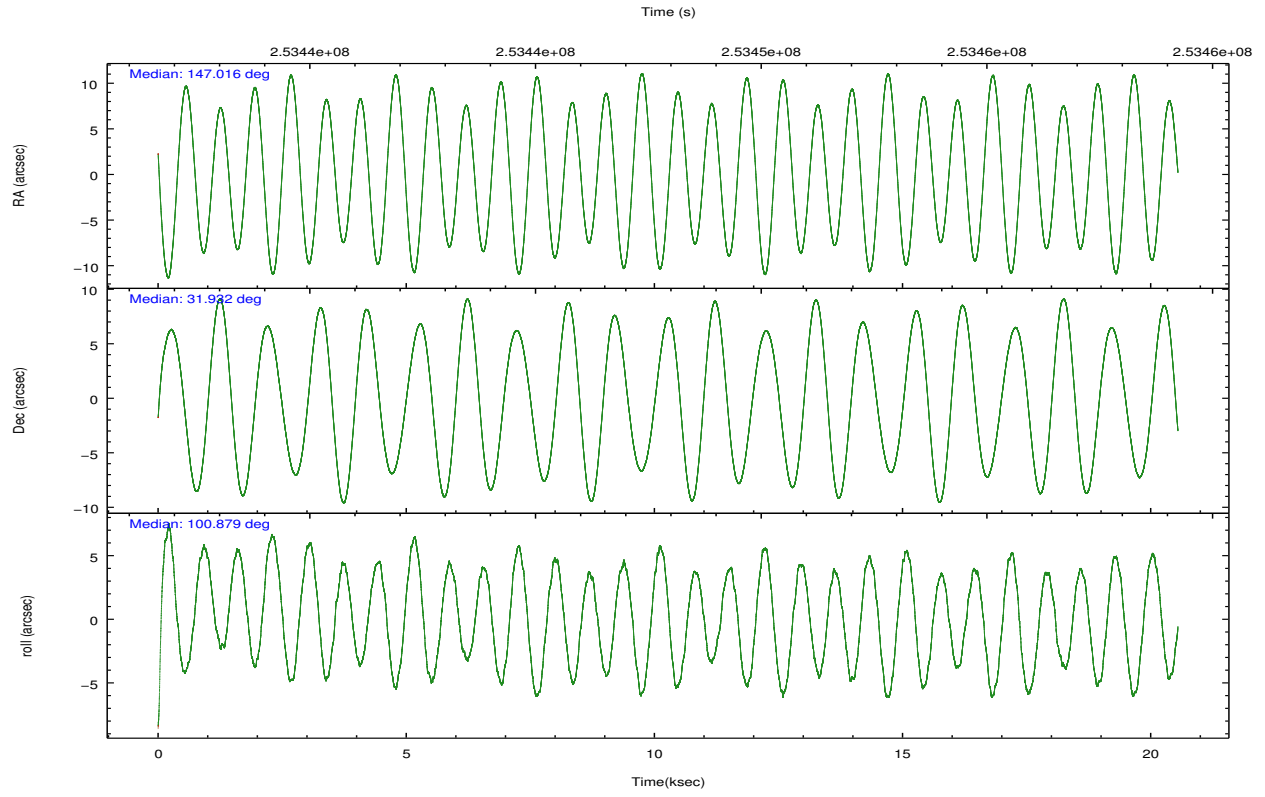
	ccd 0	ccd 1	ccd 2	ccd 3	ccd 7
grade 0 events	4790	5670	4719	4513	6049
	3%	4%	3%	3%	3%
grade 1 events	71	59	74	84	121
	0%	0%	0%	0%	0%
grade 2 events	3200	3388	3161	2896	14089
	2%	2%	2%	2%	9%
grade 3 events	1595	1697	1425	1513	6483
	1%	1%	0%	1%	4%
grade 4 events	1516	1727	1429	1480	6390
	1%	1%	0%	1%	4%
grade 5 events	4755	5092	4454	5505	16219
	3%	3%	3%	3%	10%
grade 6 events	2603	3041	2434	2589	36148
	1%	2%	1%	1%	23%
grade 7 events	112020	109198	129360	119378	67895
	85%	84%	87%	86%	44%

2.2 Compared Parameters

Parameter	Planned	Actual	Parameter	Planned	Actual
Instrument	ACIS	ACIS	Obspar format version number	7	7
Detector	ACIS-01237	ACIS-01237	Obspar file type	PREDICTED	ACTUAL
Grating	NONE	NONE	Obspar update status	NONE	UPDATED
Data mode	VFAINT	VFAINT	Number of optional ACIS chips dropped	0	0
Observation mode	POINTING	POINTING	On-chip summing requested	N	N
[deg] Pointing RA	147.036855	147.015620603002	Subarray requested	NONE	NONE
[deg] Pointing Dec	31.911578	31.9322574052613	Alternating exposures requested	N	N
[deg] Pointing Roll	100.664103	100.8840140699133	[s] Primary exposure time	0.000000	3.1
[mm] SIM focus pos	-0.782348	-0.7809083437167272			
[mm] SIM defocus	0	0.001439871863259334			
[mm] SIM translation stage pos	-233.592463	-233.5874344608287			
[mm] SIM translation stage offset	0	-0.005018542100998502			
[s] Observation start time (MET)	253438214.184000	253437105.09869			
Observation start date	2006-01-12T07:29:09	2006-01-12T07:11:45			
[s] Observation end time (MET)	253458214.184000	253459601.79973			
Observation end date	2006-01-12T13:02:29	2006-01-12T13:26:41			
Read mode	TIMED	TIMED			

2.3 Aspect



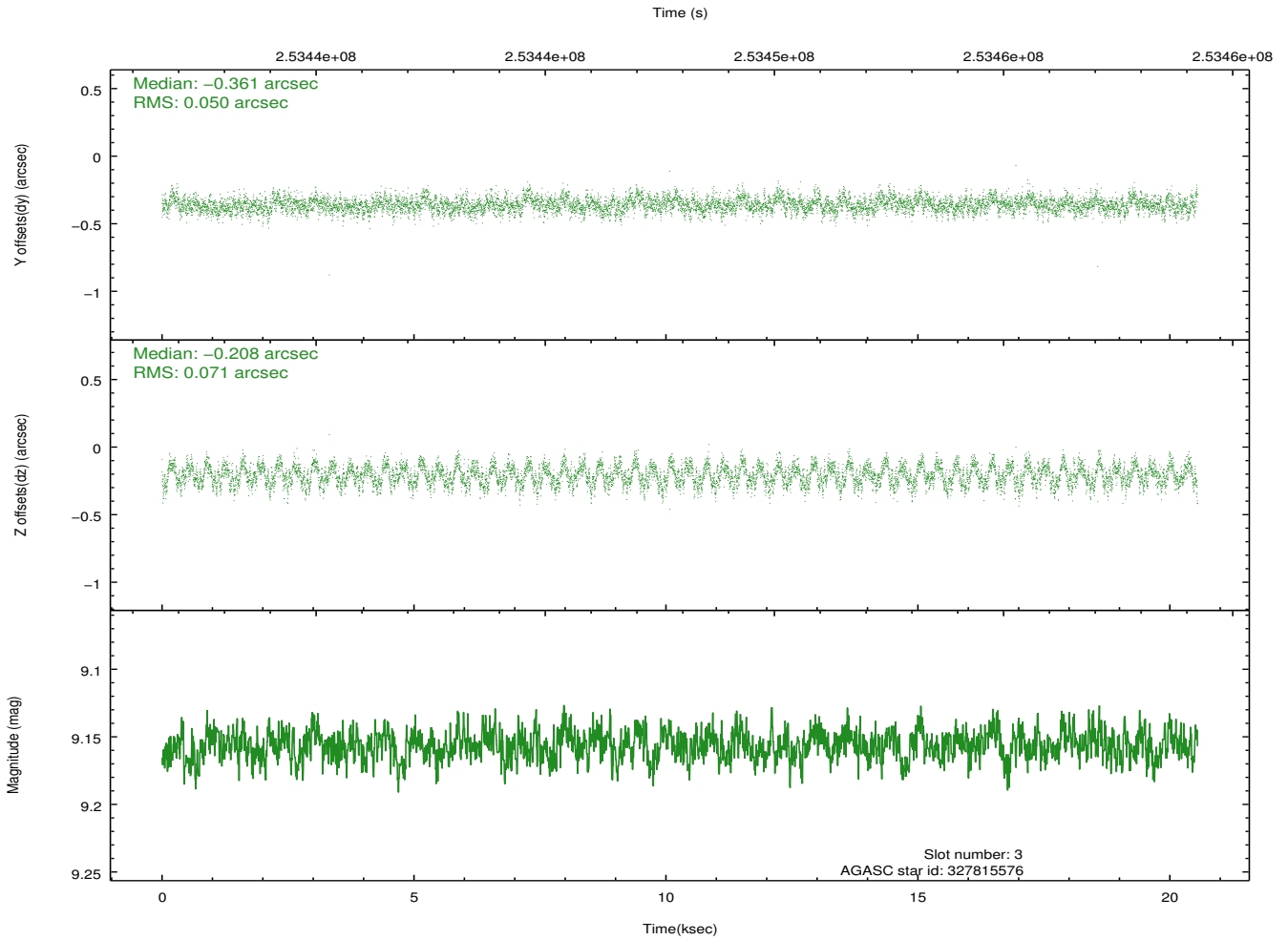
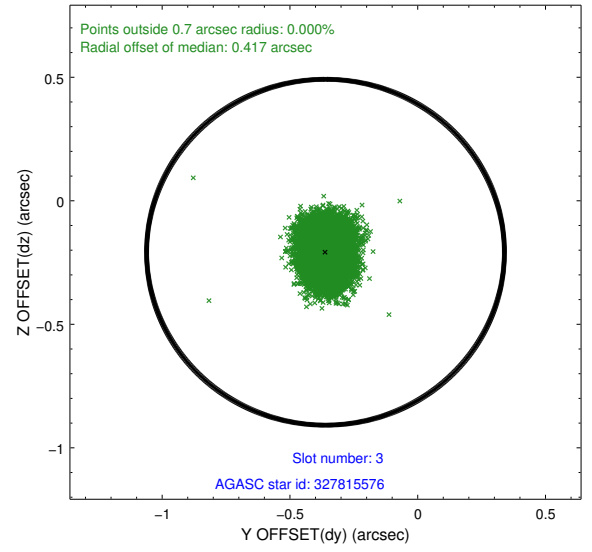
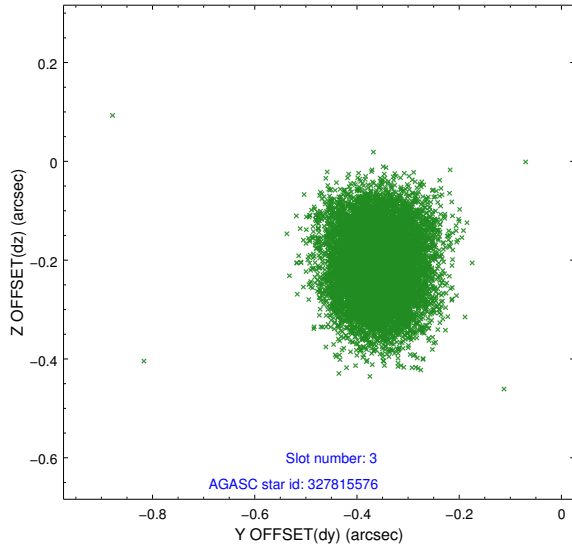


Slot Statistics

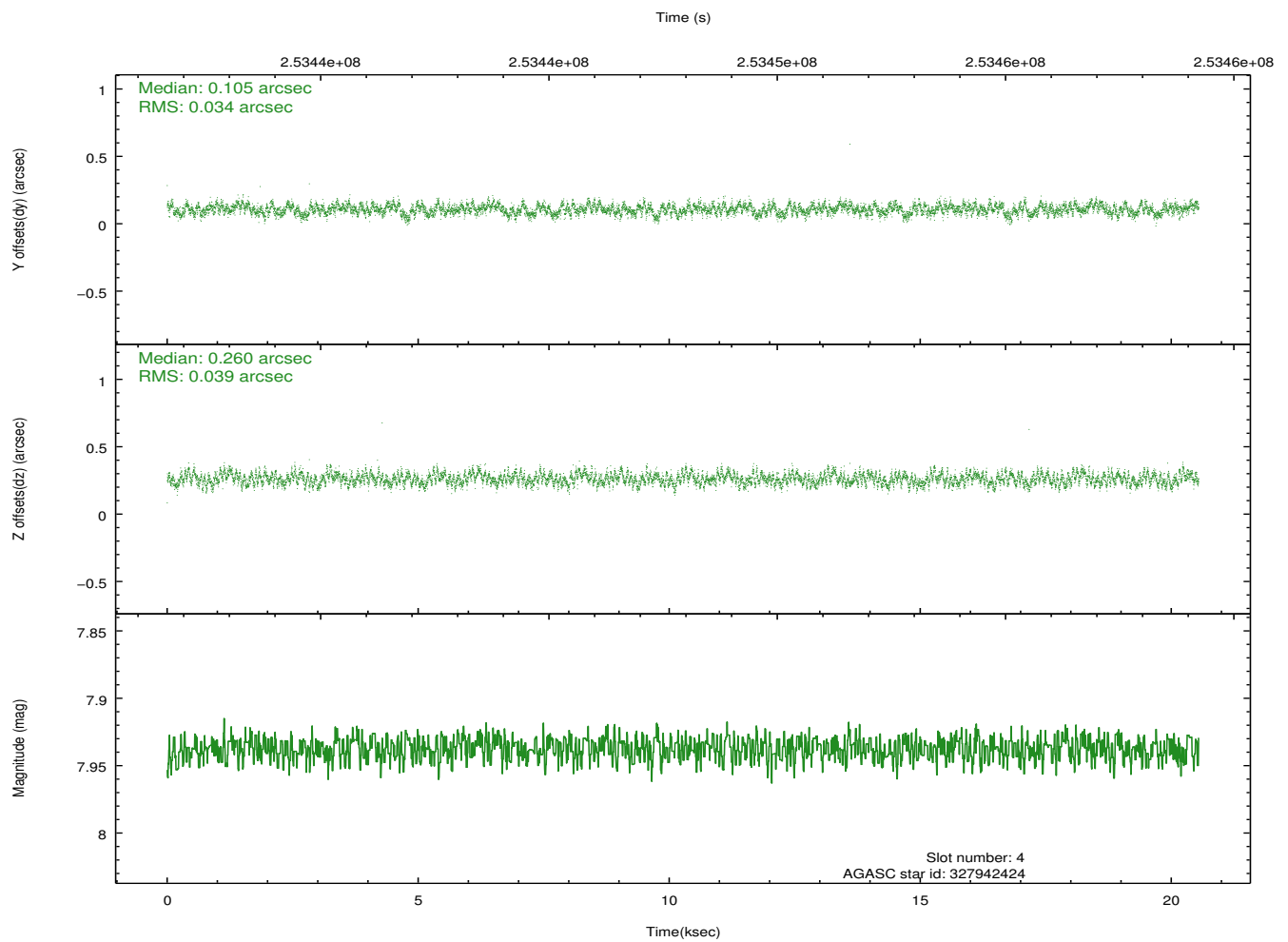
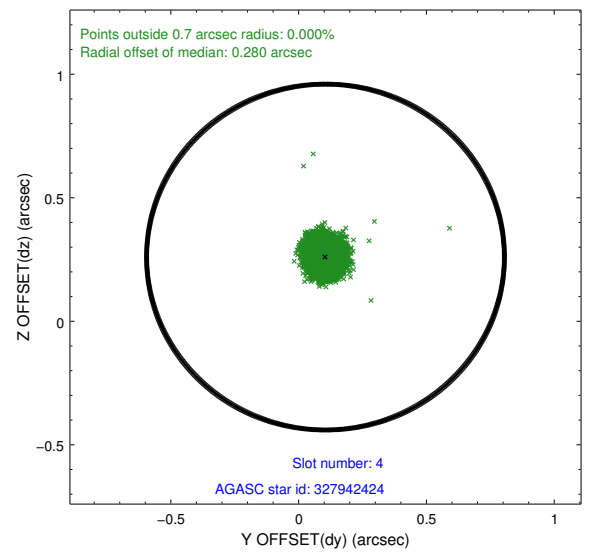
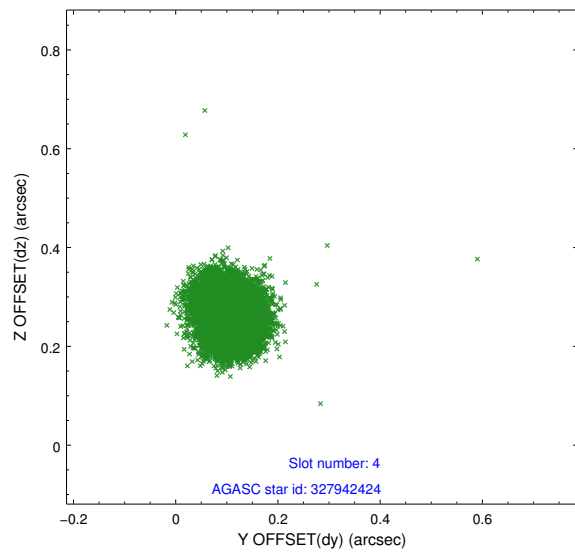
slot	status	id	mag	n_pts	med_dy	med_dz	dr1	dr2	ra	dec	mean_y	mean_z
0	FID	ACIS-I-1	7.25	5012	0.011	0.013	0.007	0.013	0.000000	0.000000	933.57	-833.16
1	FID	ACIS-I-5	7.23	5012	-0.163	0.030	0.006	0.011	0.000000	0.000000	-1814.62	1064.25
2	FID	ACIS-I-6	7.26	5012	0.061	0.028	0.007	0.012	0.000000	0.000000	398.96	1708.96
3	GUIDE	327815576	9.16	10018	-0.361	-0.208	0.093	0.147	146.573244	32.078653	855.25	1277.99
4	GUIDE	327942424	7.94	10021	0.105	0.260	0.056	0.088	147.736012	31.385852	-2250.52	-1762.28
5	GUIDE	327943312	8.79	10020	0.284	-0.185	0.058	0.097	147.023241	31.271069	-2258.28	467.55
6	GUIDE	327945680	9.16	10015	0.001	0.072	0.083	0.139	147.036442	32.114549	718.05	-133.58
7	GUIDE	327947128	8.54	10019	-0.033	0.064	0.078	0.123	147.917173	31.436532	-2170.18	-2342.77

2.4 Star Slots

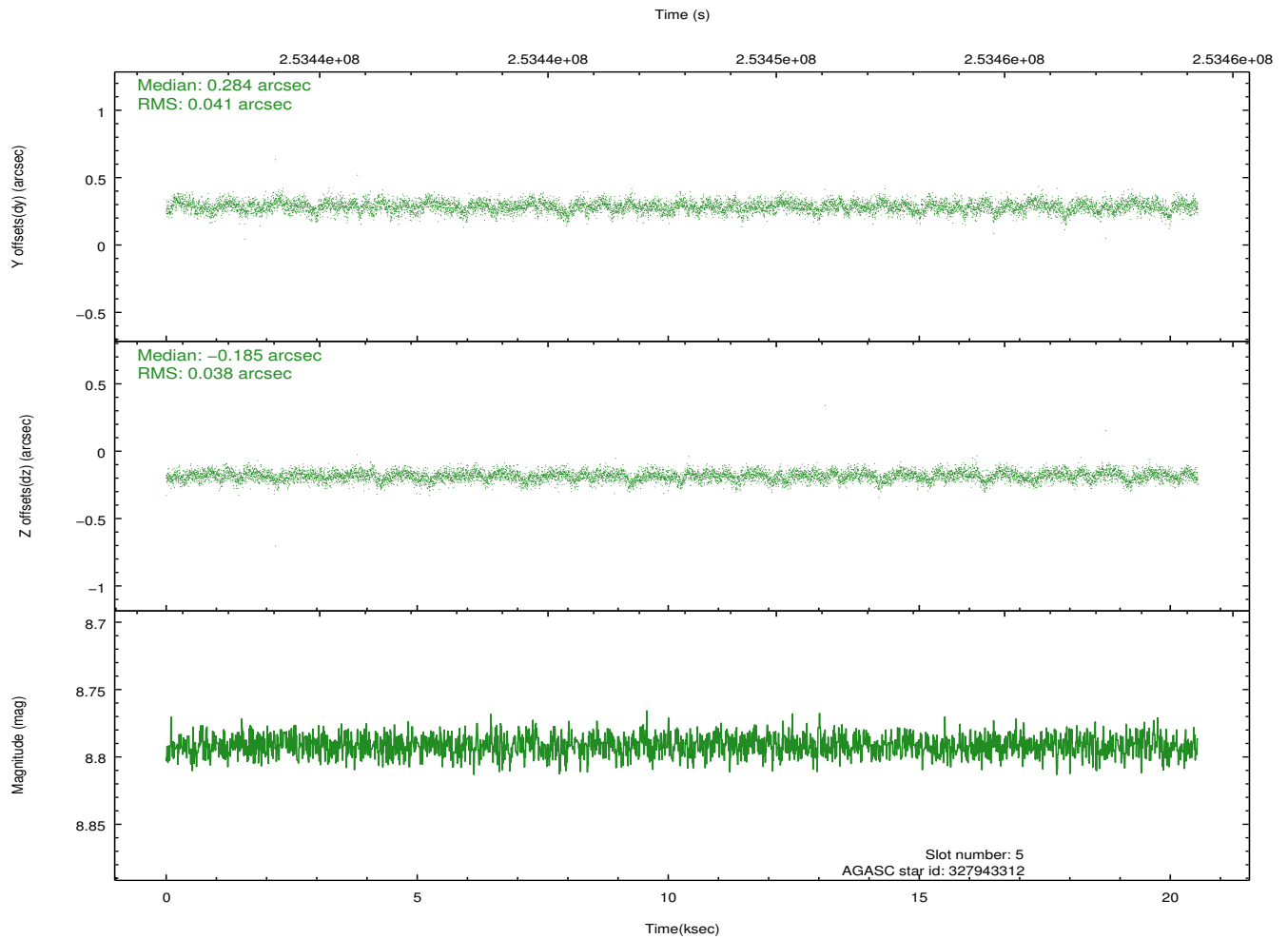
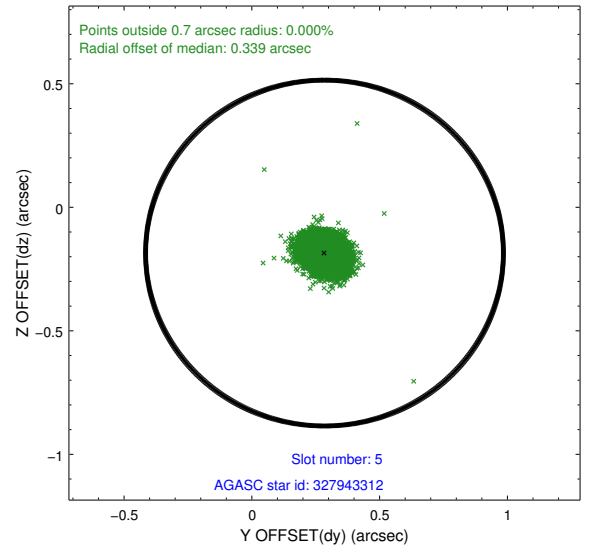
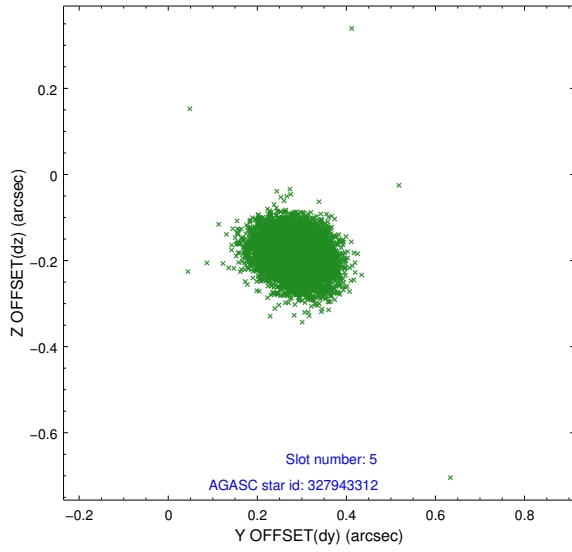
2.4.1 Slot 3



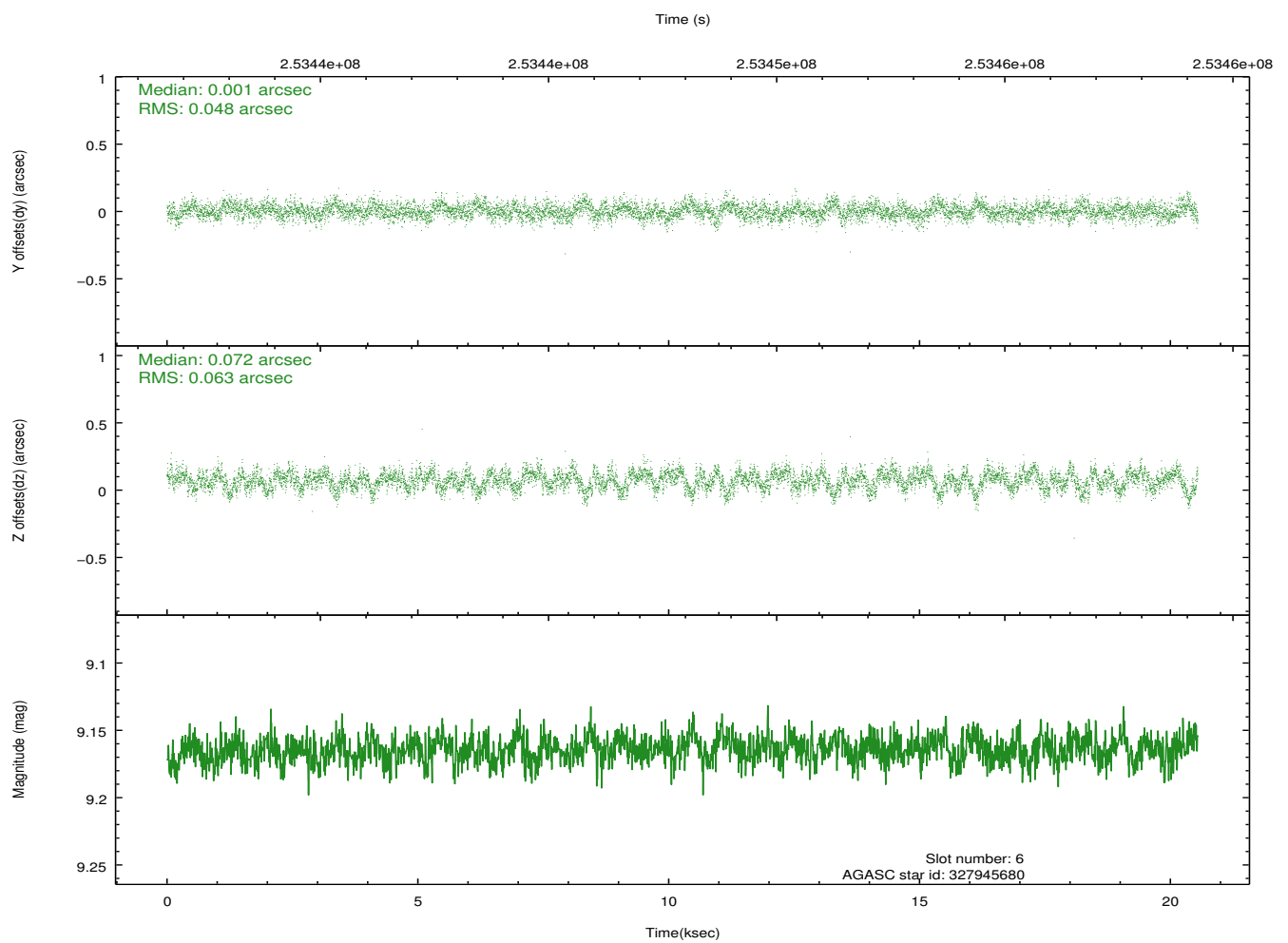
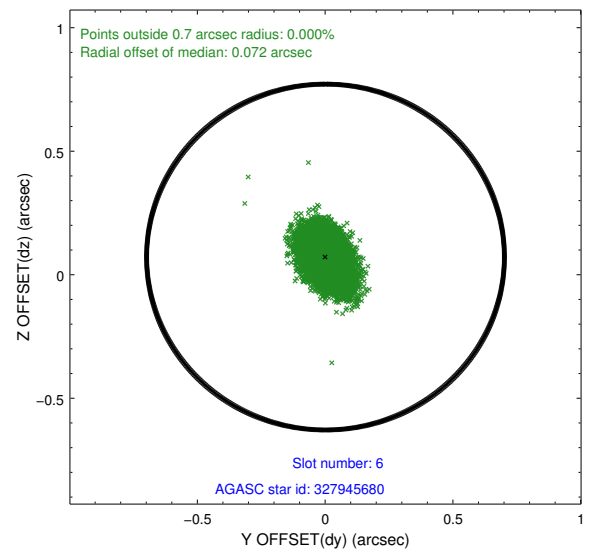
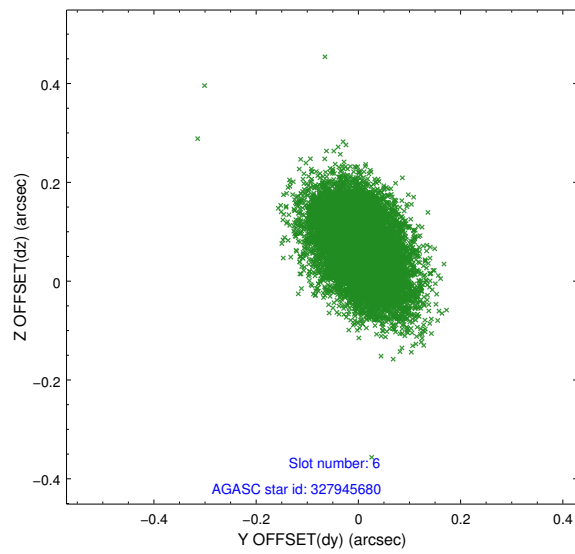
2.4.2 Slot 4



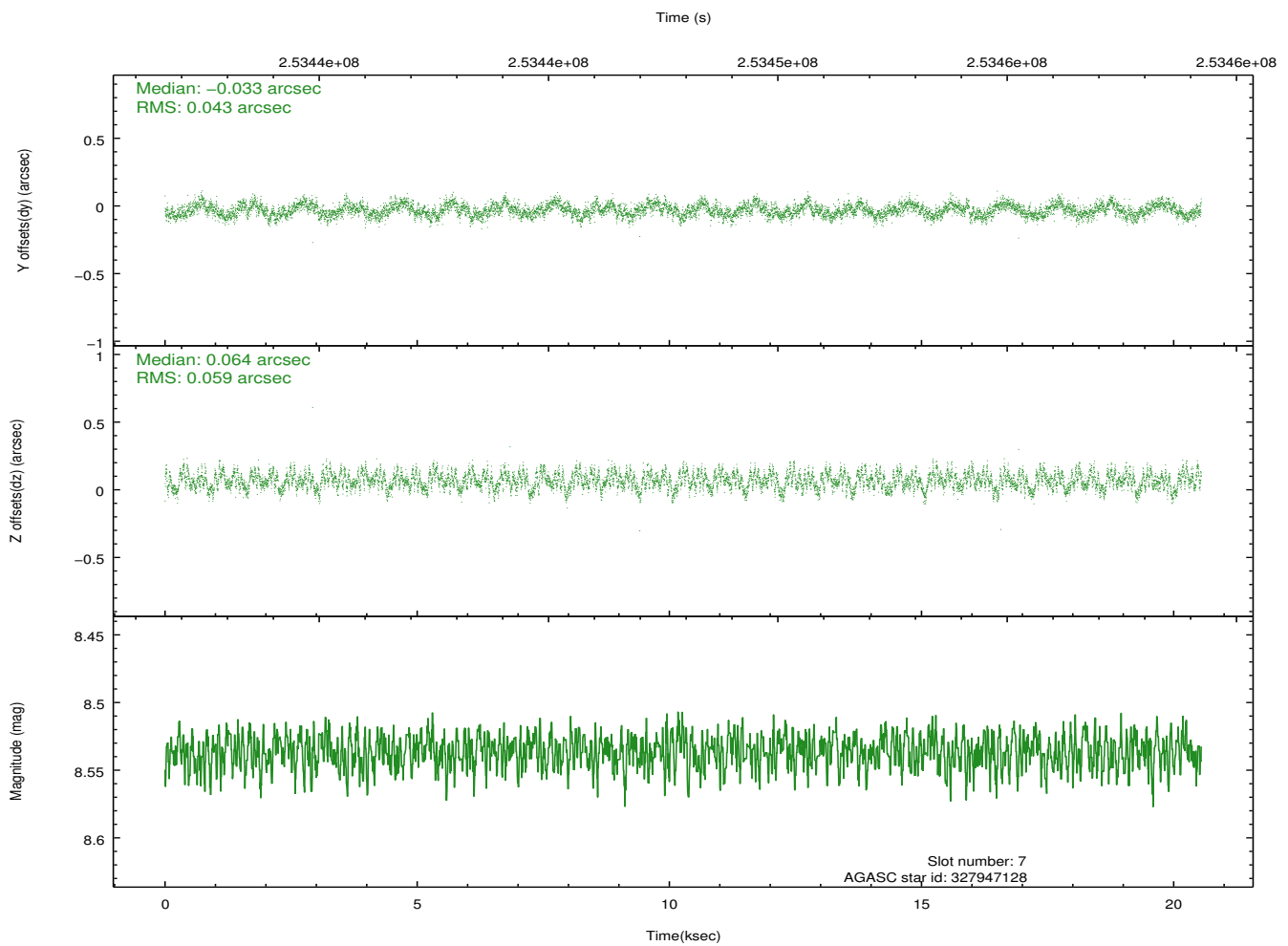
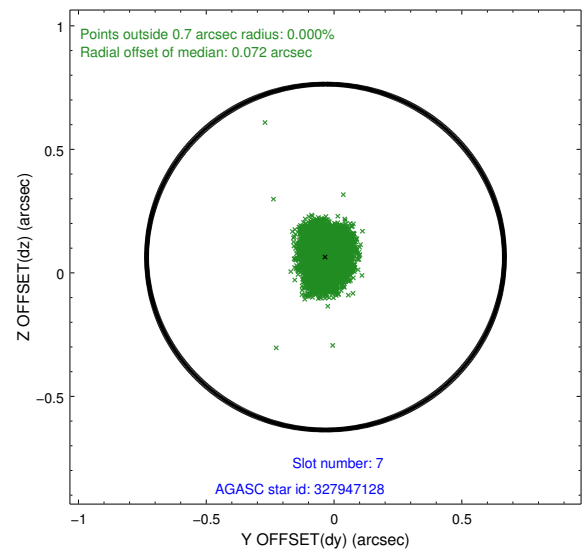
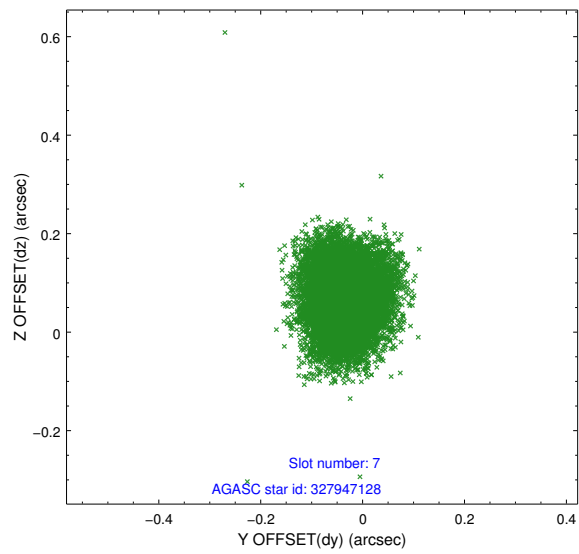
2.4.3 Slot 5



2.4.4 Slot 6

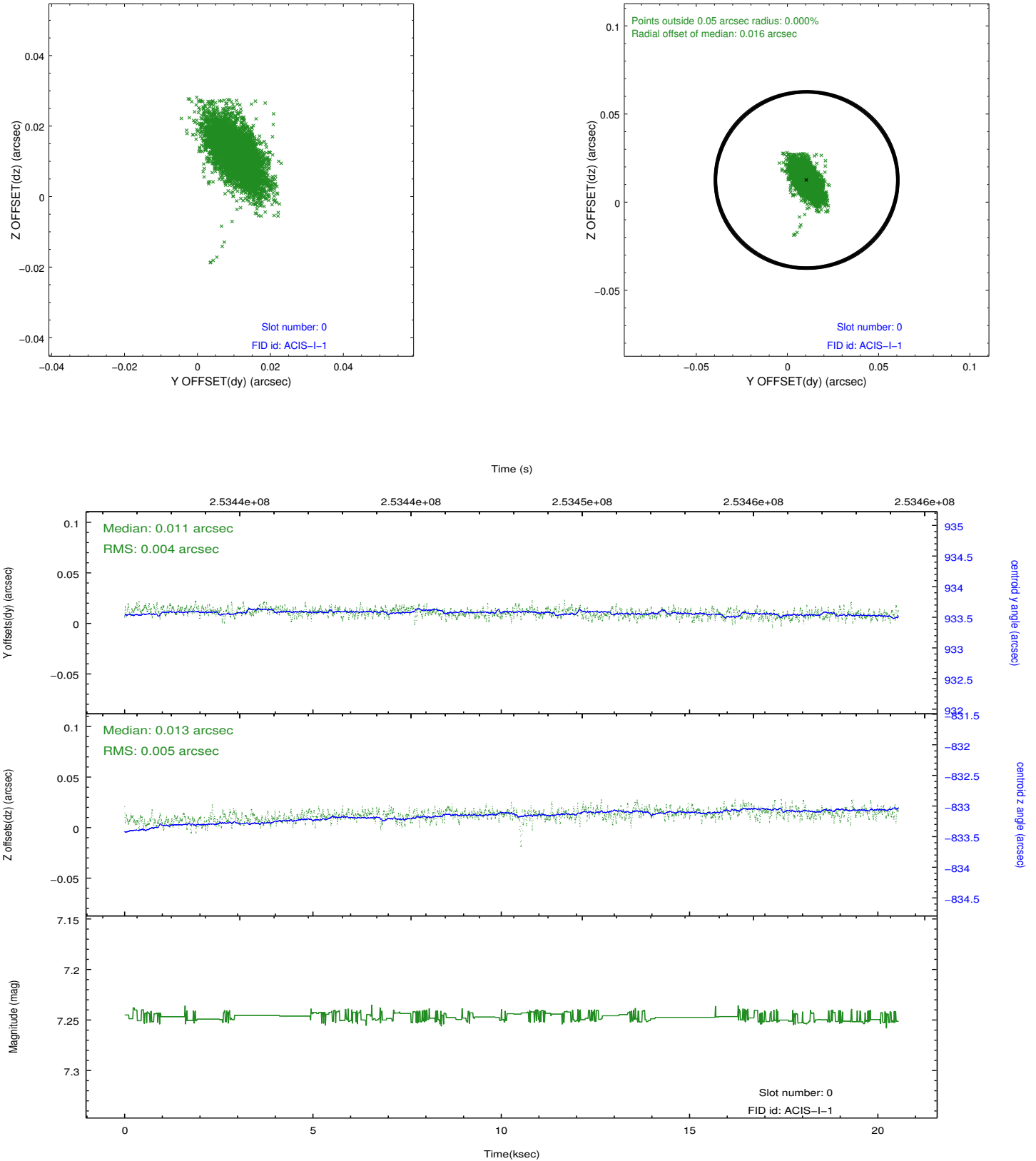


2.4.5 Slot 7

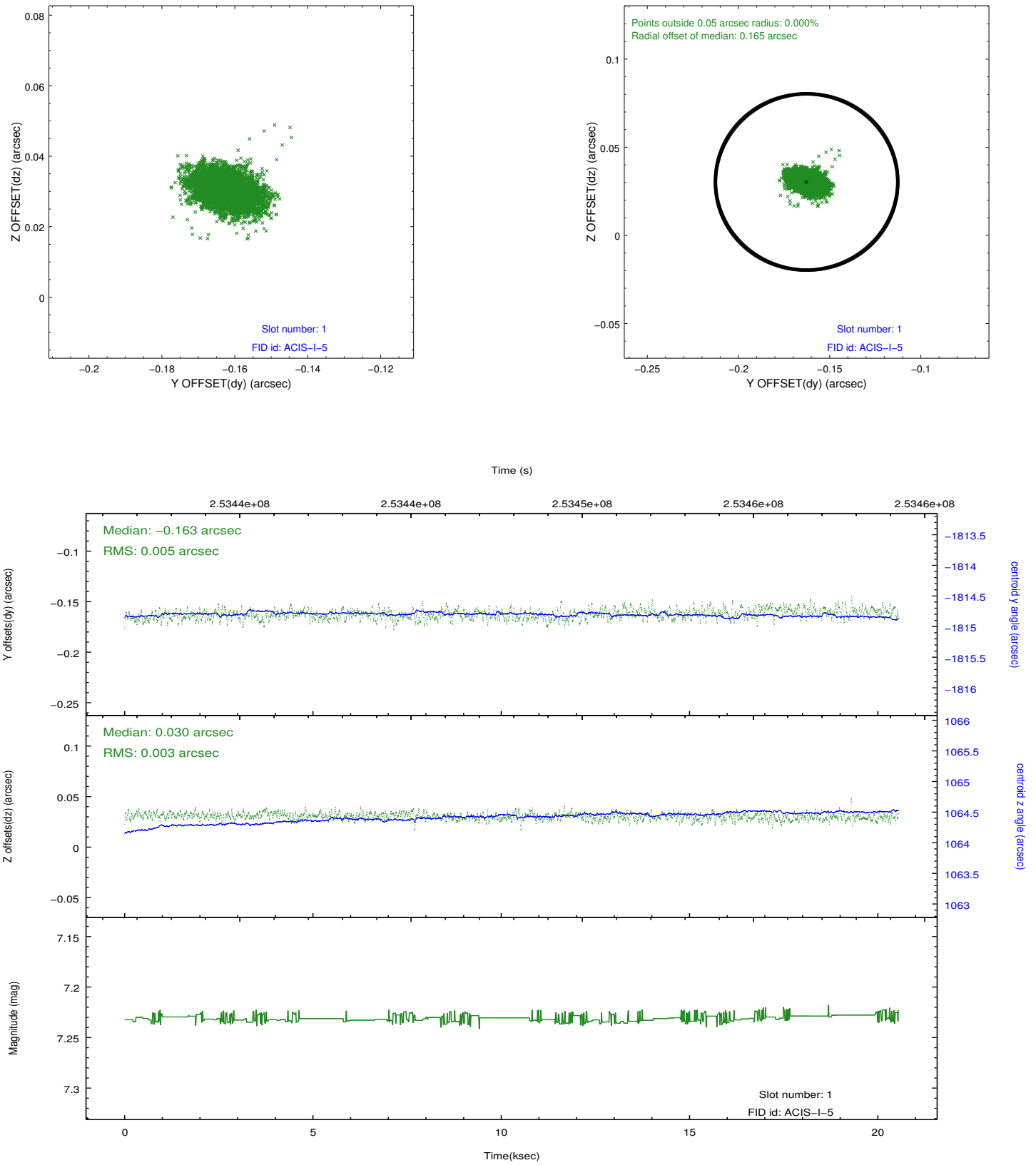


2.5 FID Slots

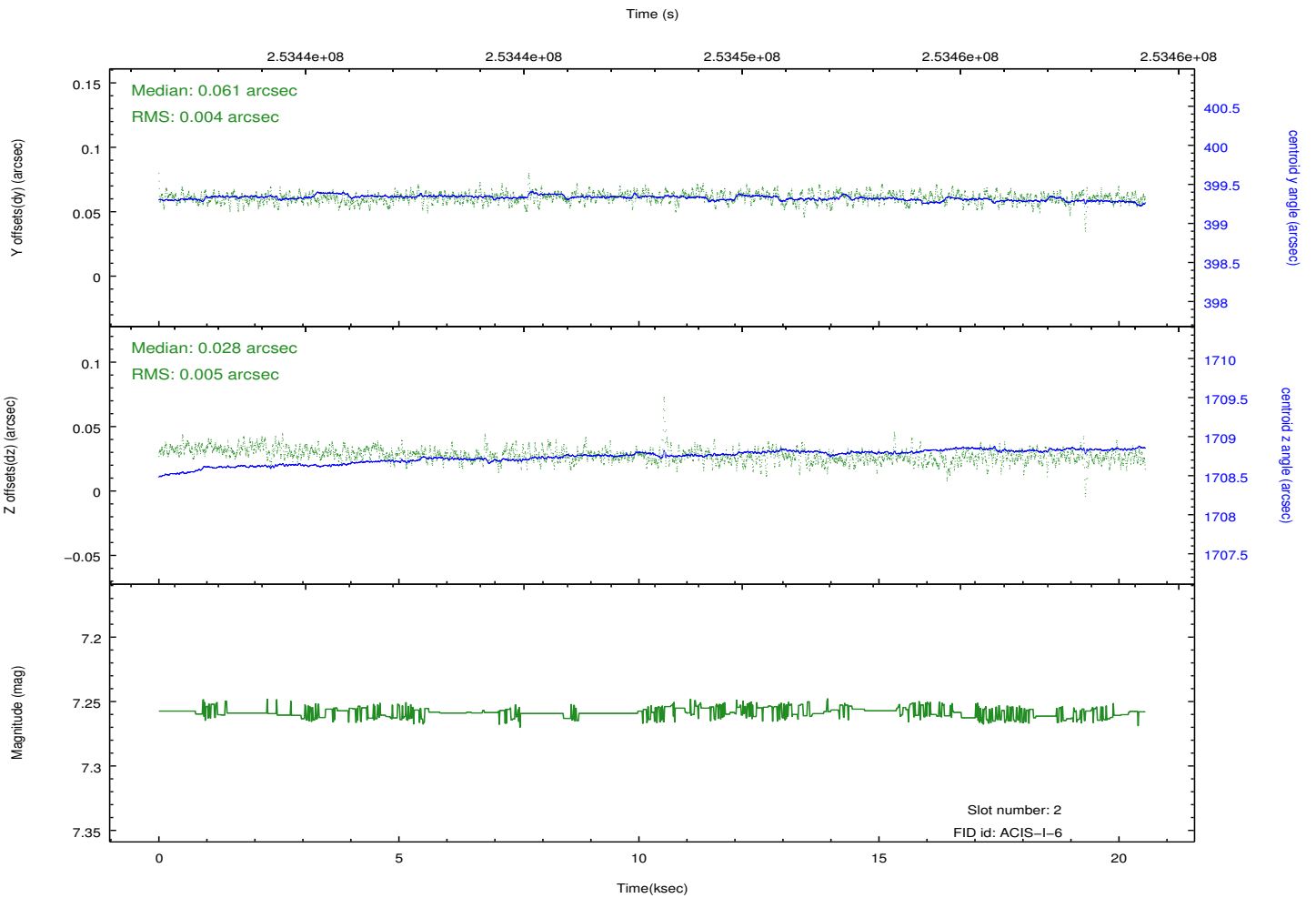
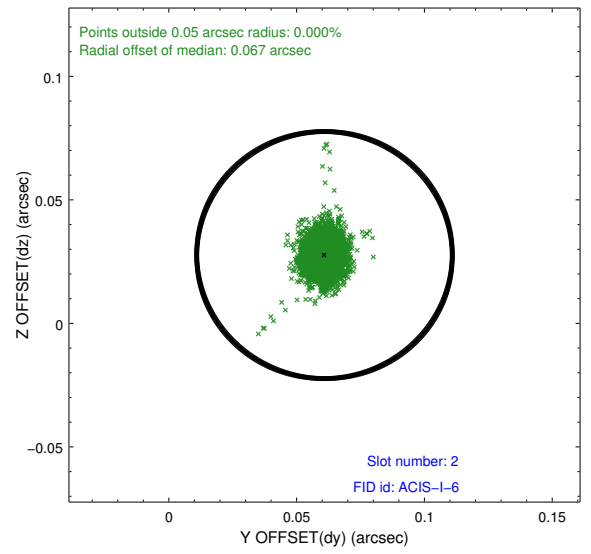
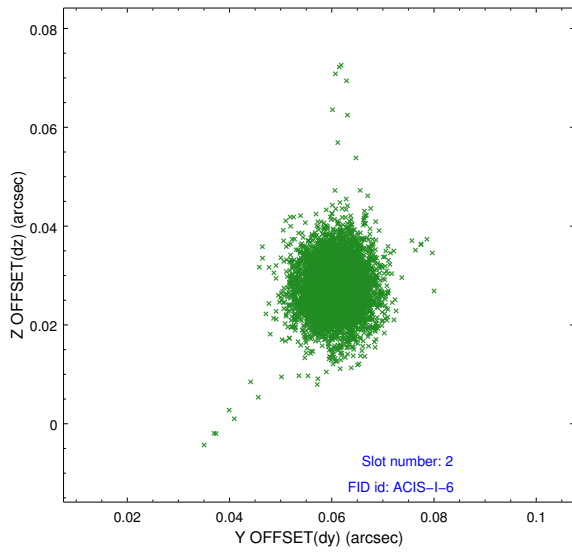
2.5.1 Slot 0



2.5.2 Slot 1



2.5.3 Slot 2



A Summary

A.1 Status

V&V Scientist	Jen Lauer
V&V Date (YYYY-MM-DD)	2012.03.23
V&V Edition	1
V&V Disposition and Status	OK
V&V Charge Time	20.0352589

A.2 Comments