

# V&V Reference Report

## L2 ASCDS Version : 8.4.3.1

Observation 6781 - L2 Version 2  
Chandra X-Ray Center

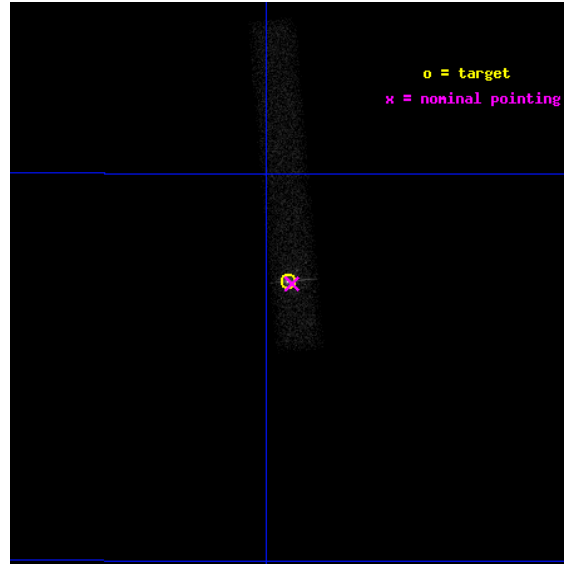
L2 Processing Date : Apr 4 2012

## Contents

<b>1</b>	<b>Front</b>	<b>2</b>
<b>2</b>	<b>OBI</b>	<b>3</b>
2.1	OBI . . . . .	3
2.1.1	Images . . . . .	3
2.1.2	Bias . . . . .	3
2.1.3	Parameters . . . . .	4
2.1.4	Events . . . . .	4
2.2	Compared Parameters . . . . .	5
2.3	Aspect . . . . .	6
2.4	Star Slots . . . . .	9
2.4.1	Slot 3 . . . . .	9
2.4.2	Slot 4 . . . . .	10
2.4.3	Slot 5 . . . . .	11
2.4.4	Slot 6 . . . . .	12
2.4.5	Slot 7 . . . . .	13
2.5	FID Slots . . . . .	14
2.5.1	Slot 0 . . . . .	14
2.5.2	Slot 1 . . . . .	15
2.5.3	Slot 2 . . . . .	16
<b>A</b>	<b>Summary</b>	<b>17</b>
A.1	Status . . . . .	17
A.2	Comments . . . . .	17

# 1 Front

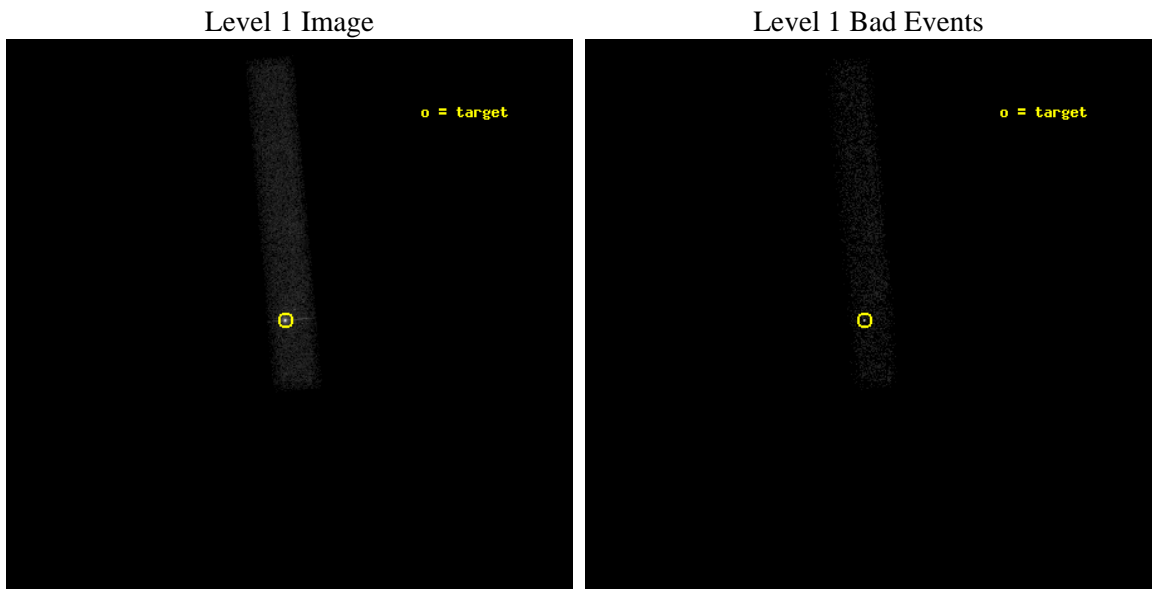
seq_num	701199	Sequence number
obs_id	6781	Observation id
title	Active Galactic Nuclei in nearby galaxies: a new view of the origin of the radio-loud radio-quiet dichotomy?	Proposal title
observer	Dr. Alessandro Capetti	Principal investigator
object	UGC6946	Source name
dtcycle	0	&#160
cycle	P	events from which exps? Prim/Second/Both
ra_targ	179.48375	Observer's specified target RA [deg]
dec_targ	55.453611	Observer's specified target Dec [deg]
ra_nom	179.48064266612	Nominal RA [deg]
dec_nom	55.452505481899	Nominal Dec [deg]
roll_nom	264.93459819651	Nominal Roll [deg]
revision	2	Processing version of data
ontime	15003.200223535	Sum of GTIs [s]
liveltime	13607.110668906	Livetime [s]
ontime7	15003.200223535	Sum of GTIs [s]
l2events	33421	Number of level 2 events



## 2 OBI

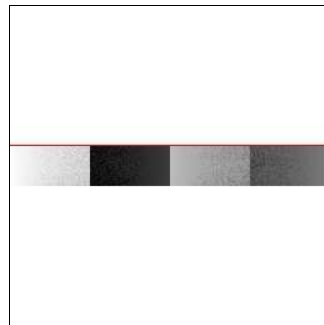
### 2.1 OBI

#### 2.1.1 Images



#### 2.1.2 Bias

Chip 7



### 2.1.3 Parameters

obi_num	1	Obi number	sched_exp_time	14850.000000	[s] Scheduled observation exposure time
ascdsver	8.4.3.1	Processing system revision	ontime	15003.200223535	Sum of GTIs [s]
caldbver	4.4.9	&#160	ontime7	15003.200223535	Sum of GTIs [s]
date	2012-04-04T19:51:24	Date and time of file creation	l1events	52850	Number of level 1 events
revision	2	Processing version of data			

### 2.1.4 Events

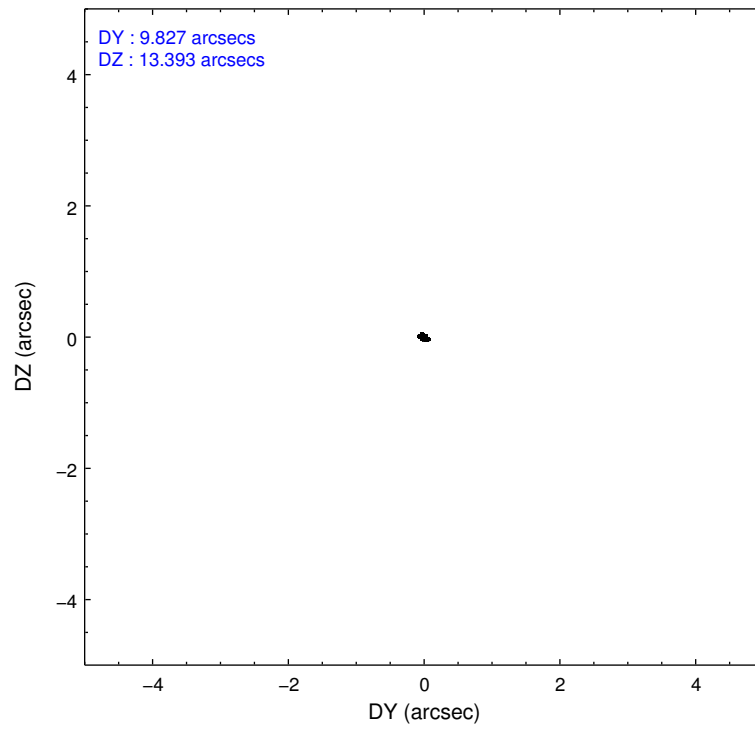
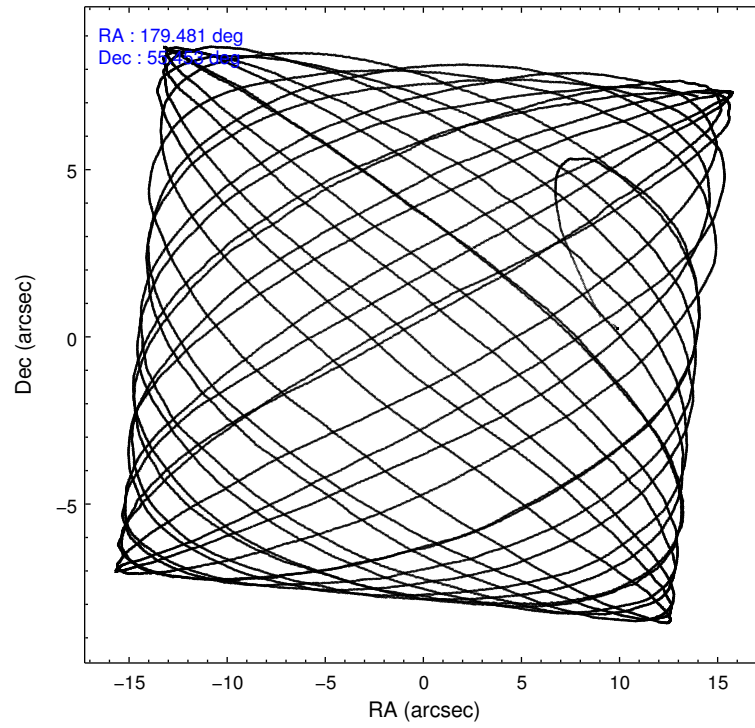
	<b>ccd 7</b>
level 1 events	52850
rejected events	18971
rejected %	<b>35%</b>

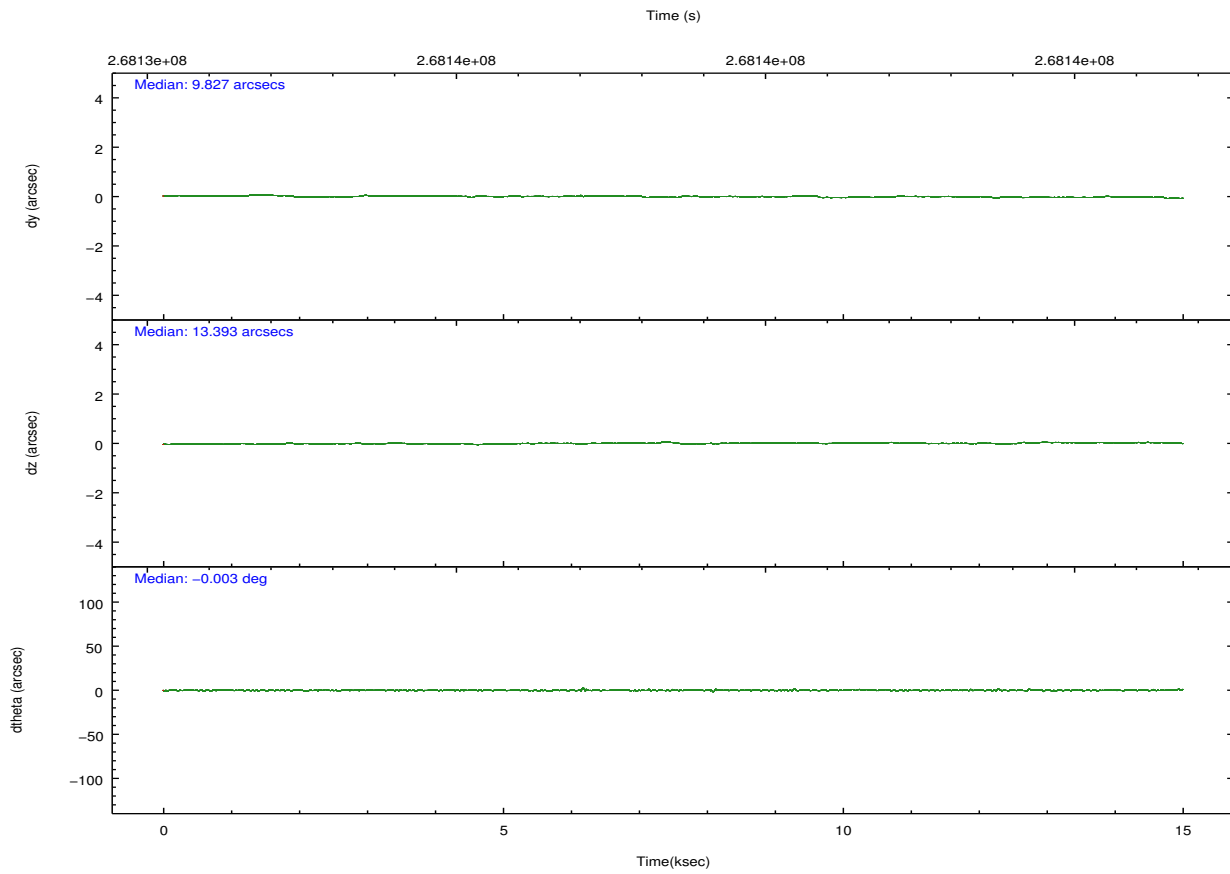
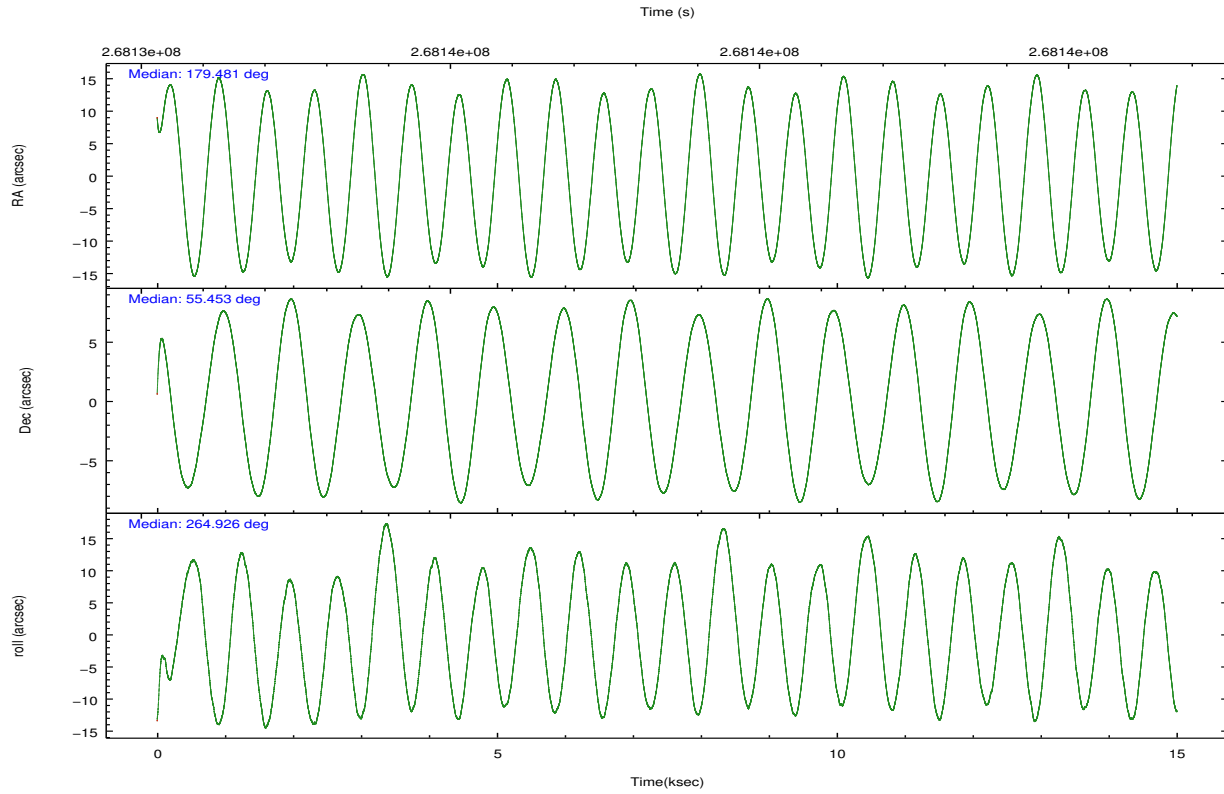
	<b>ccd 7</b>
grade 0 events	6862
	12%
grade 1 events	396
	0%
grade 2 events	7937
	15%
grade 3 events	4192
	7%
grade 4 events	3916
	7%
grade 5 events	4065
	7%
grade 6 events	12053
	22%
grade 7 events	13429
	25%

## 2.2 Compared Parameters

Parameter	Planned	Actual	Parameter	Planned	Actual
Instrument	ACIS	ACIS	Obspar format version number	7	7
Detector	ACIS-7	ACIS-7	Obspar file type	PREDICTED	ACTUAL
Grating	NONE	NONE	Obspar update status	NONE	UPDATED
Data mode	VFAINT	VFAINT	Number of optional ACIS chips dropped	0	0
Observation mode	POINTING	POINTING	On-chip summing requested	N	N
[deg] Pointing RA	179.459770	179.4806426661201	Subarray requested	CUSTOM	1/8
[deg] Pointing Dec	55.477053	55.45250548189871	Subarray start row	449	449
[deg] Pointing Roll	264.795176	264.9345981965096	Subarray row count	128	128
[mm] SIM focus pos	-0.684267	-0.6828225247311905	Alternating exposures requested	N	N
[mm] SIM defocus	0	0.001444936568705701	[s] Primary exposure time	0.000000	0.4
[mm] SIM translation stage pos	-190.132523	-190.1425803651734			
[mm] SIM translation stage offset	0	0.01005778216563158			
[s] Observation start time (MET)	268131155.184000	268129886.28299			
Observation start date	2006-07-01T08:51:30	2006-07-01T08:31:26			
[s] Observation end time (MET)	268146005.184000	268146961.75879			
Observation end date	2006-07-01T12:59:00	2006-07-01T13:16:01			
Read mode	TIMED	TIMED			

## 2.3 Aspect



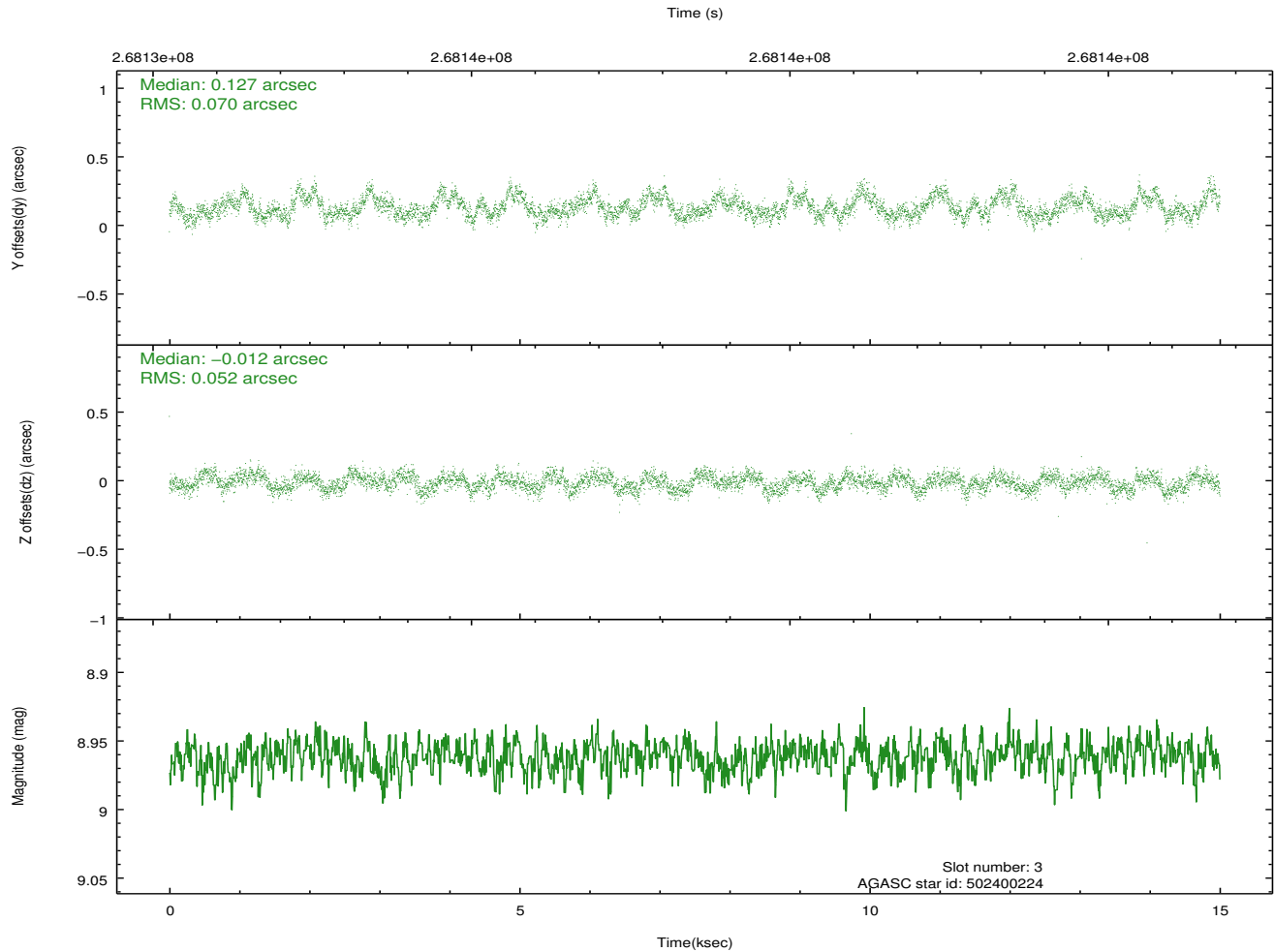
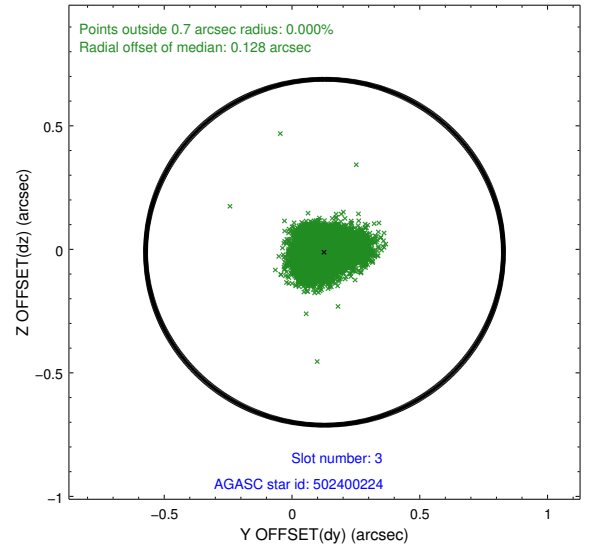
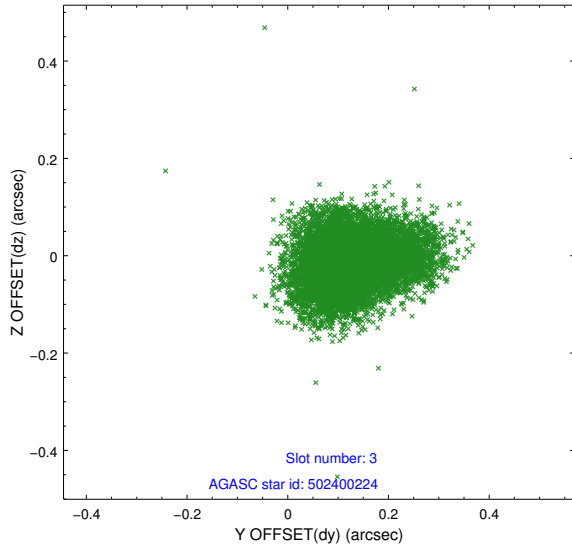


### Slot Statistics

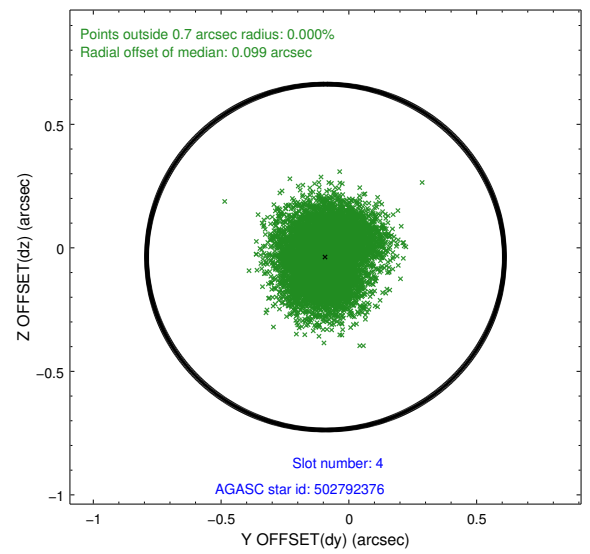
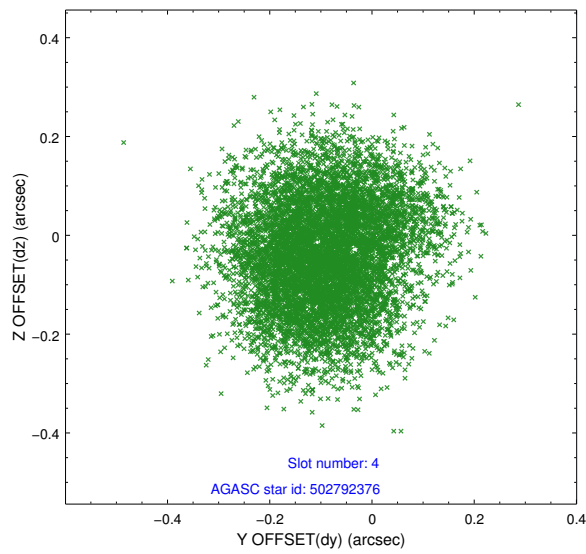
slot	status	id	mag	n_pts	med_dy	med_dz	dr1	dr2	ra	dec	mean_y	mean_z
0	FID	ACIS-S-2	7.10	3660	-0.019	-0.046	0.007	0.011	0.000000	0.000000	-762.70	-1734.71
1	FID	ACIS-S-4	7.20	3660	0.126	0.022	0.006	0.010	0.000000	0.000000	2150.61	173.48
2	FID	ACIS-S-5	7.23	3660	-0.138	0.033	0.007	0.011	0.000000	0.000000	-1815.25	167.56
3	GUIDE	502400224	8.96	7271	0.127	-0.012	0.093	0.148	180.457538	54.870956	1970.77	2255.14
4	GUIDE	502792376	9.88	7311	-0.091	-0.037	0.154	0.239	180.437493	55.132253	1039.60	2115.68
5	GUIDE	502793960	9.55	7316	0.013	0.185	0.176	0.262	179.393376	55.531414	-182.41	-152.06
6	GUIDE	502795632	9.08	7318	-0.061	-0.001	0.097	0.153	180.454171	55.827001	-1451.56	1886.80
7	GUIDE	502796064	9.72	7306	-0.002	-0.123	0.126	0.200	178.783977	55.701683	-687.44	-1439.15

## 2.4 Star Slots

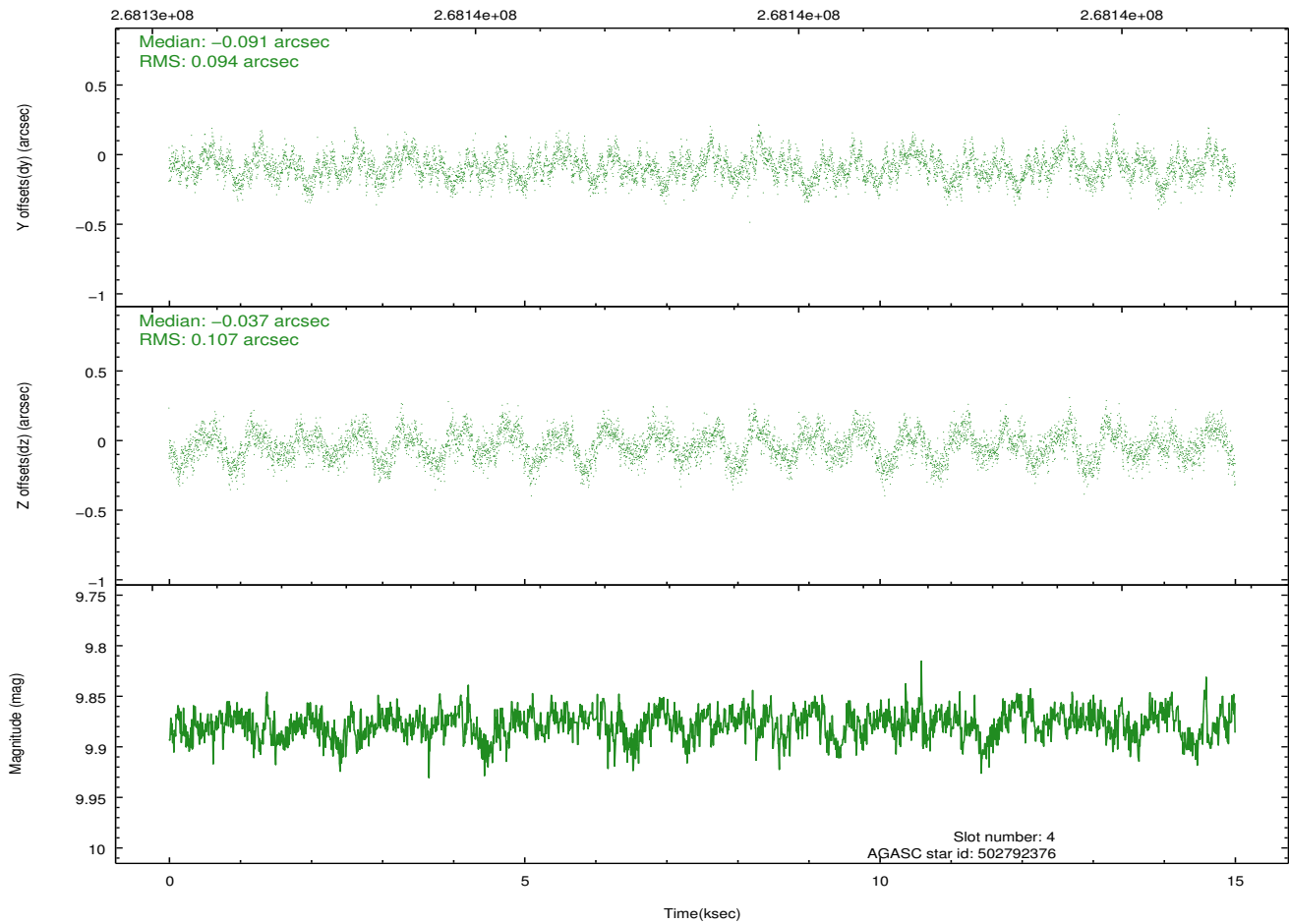
### 2.4.1 Slot 3



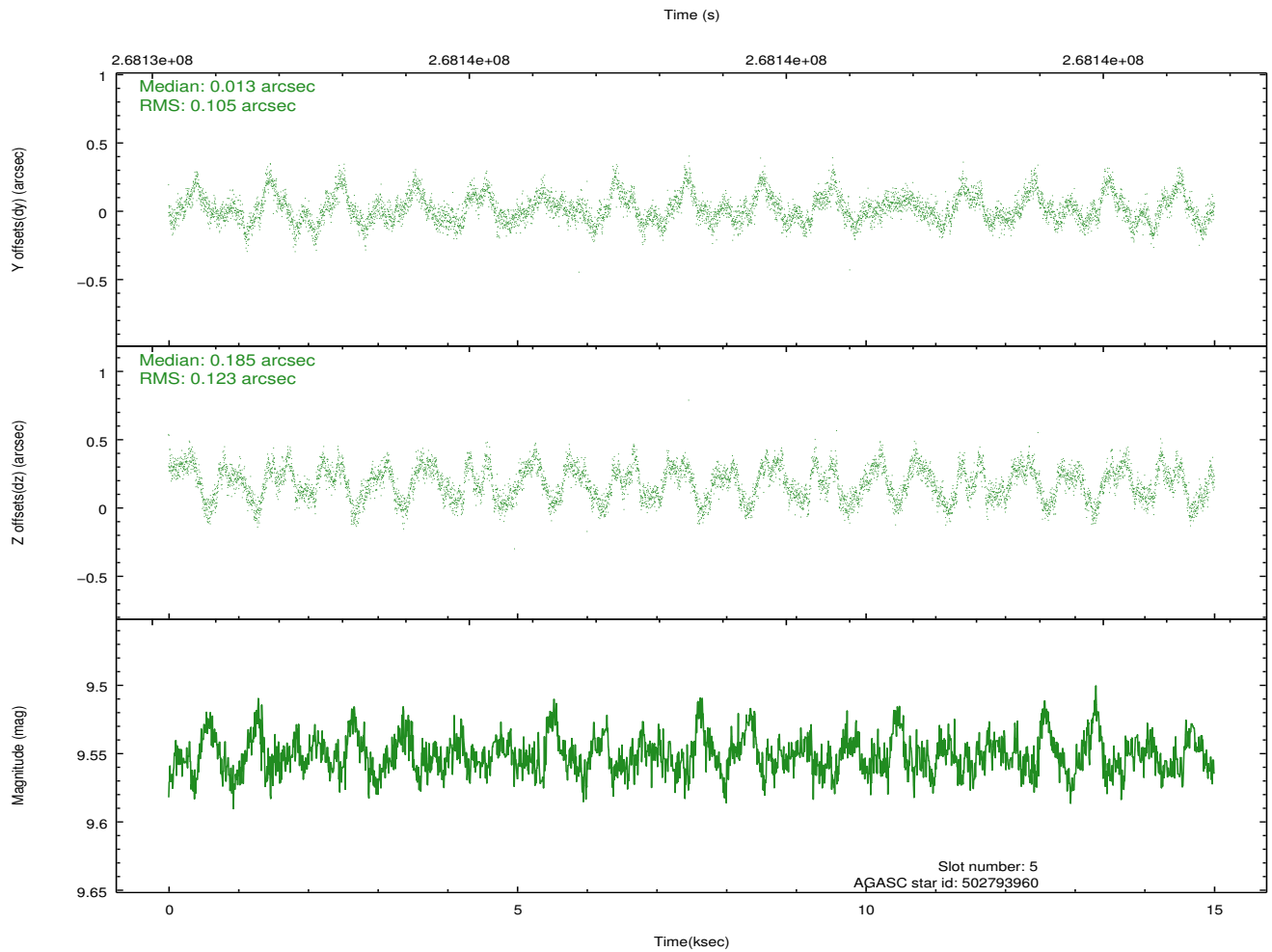
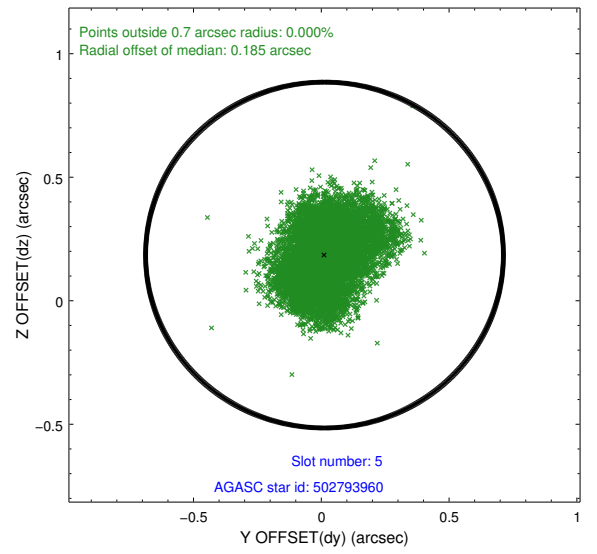
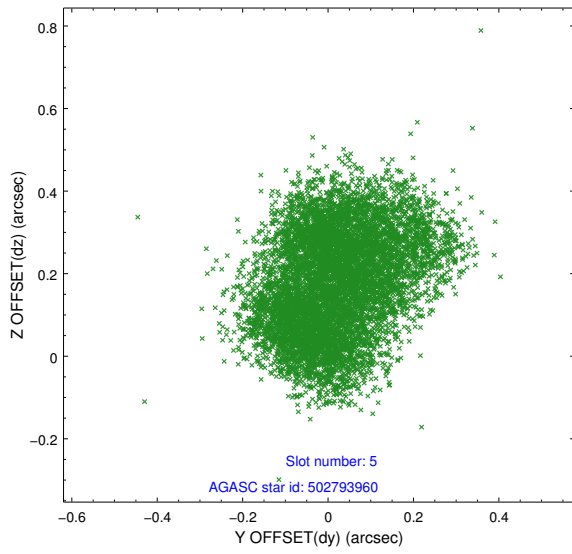
## 2.4.2 Slot 4



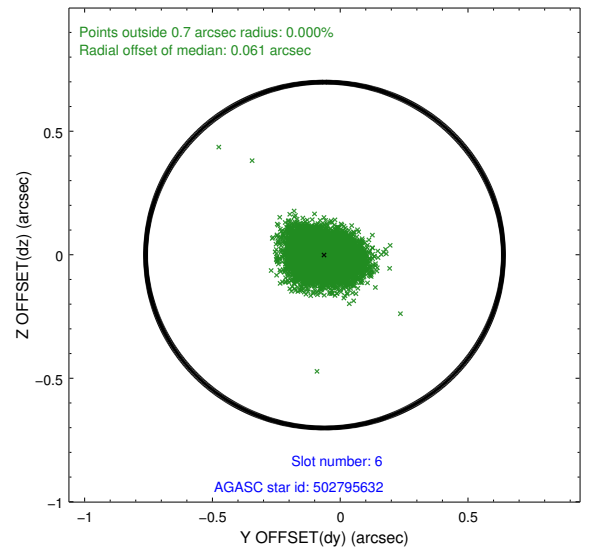
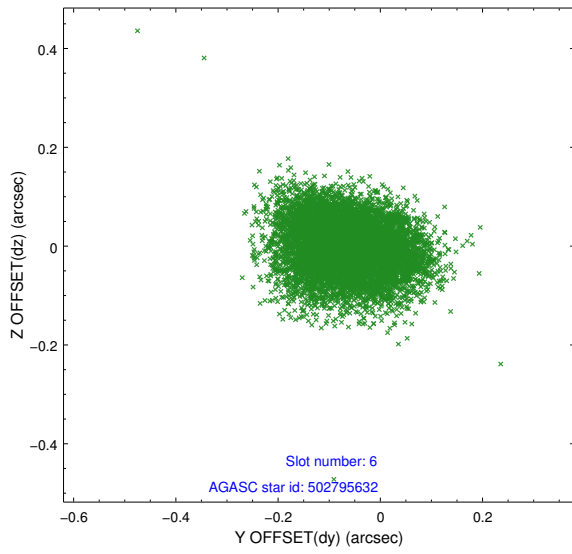
Time (s)



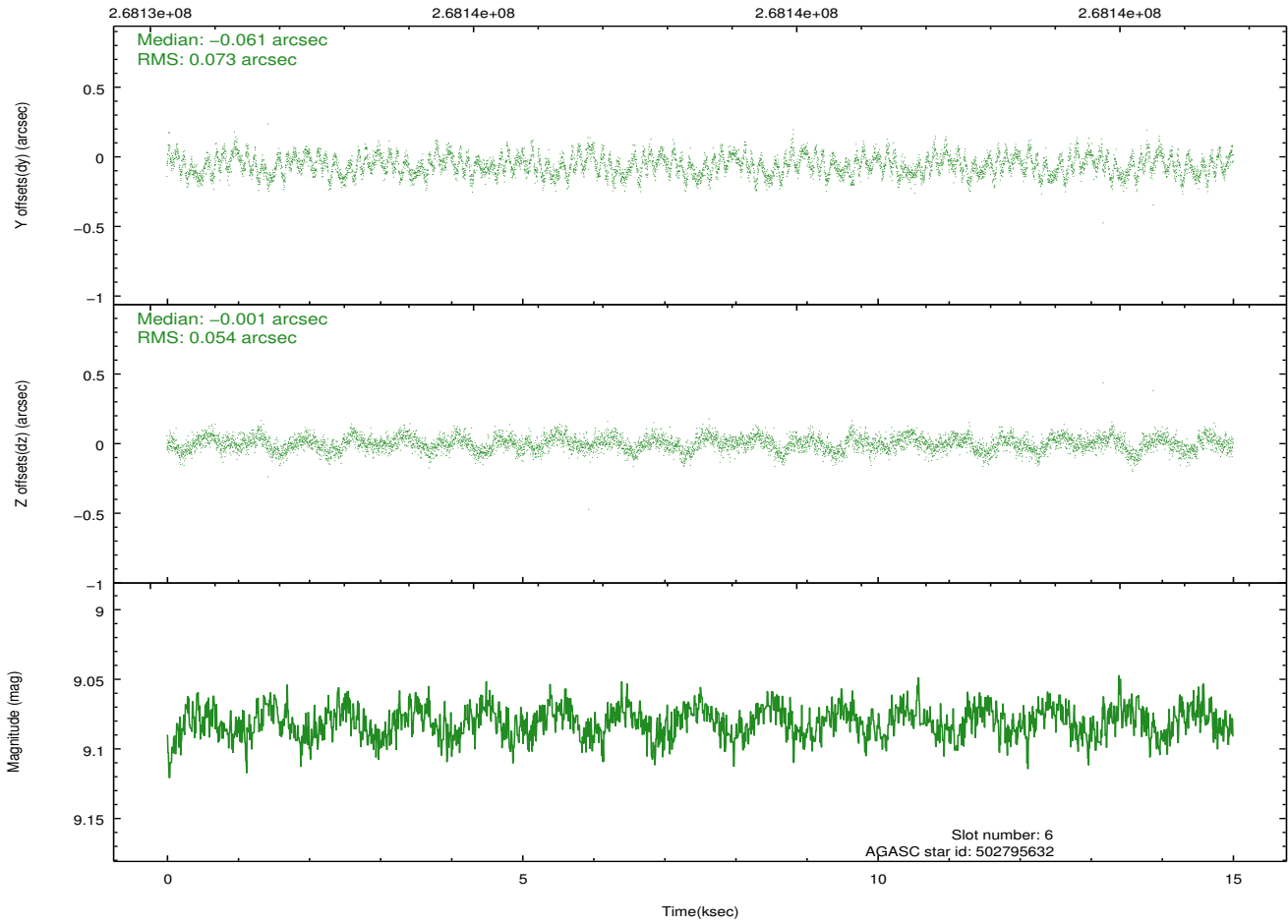
### 2.4.3 Slot 5



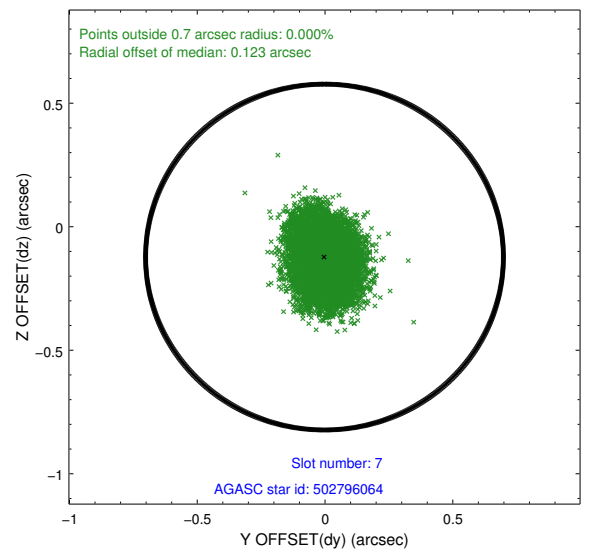
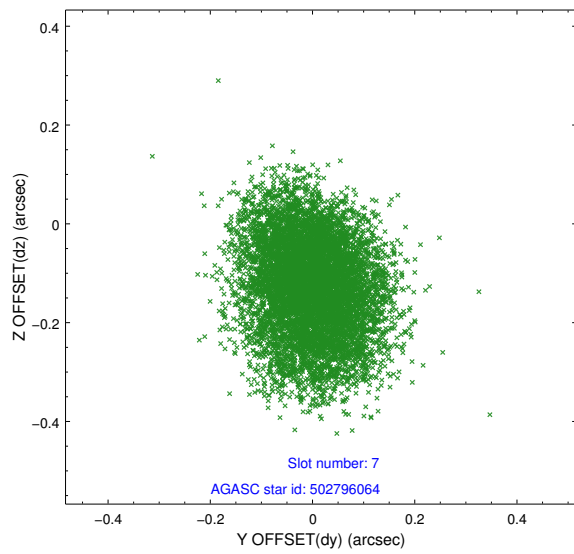
### 2.4.4 Slot 6



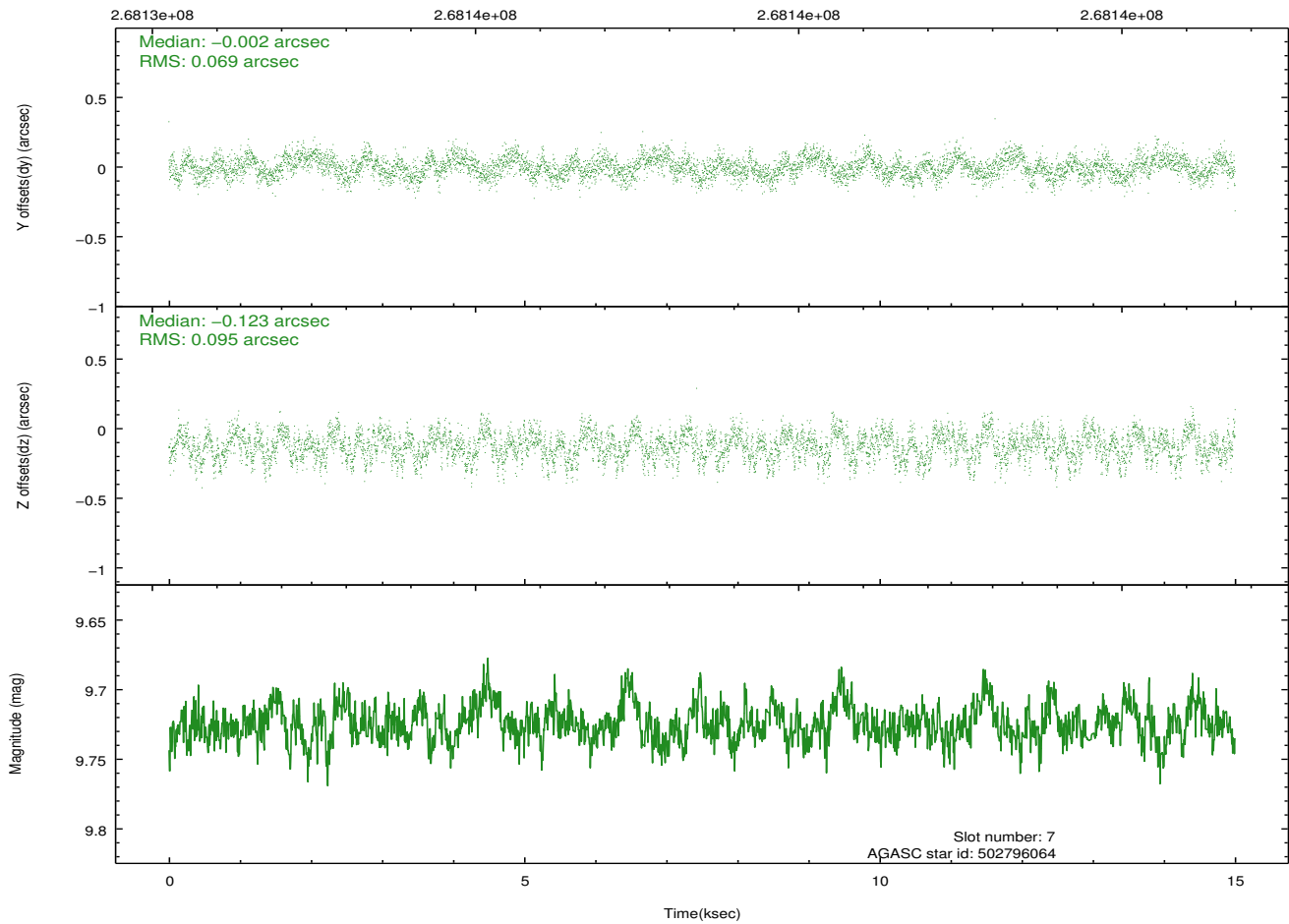
Time (s)



## 2.4.5 Slot 7

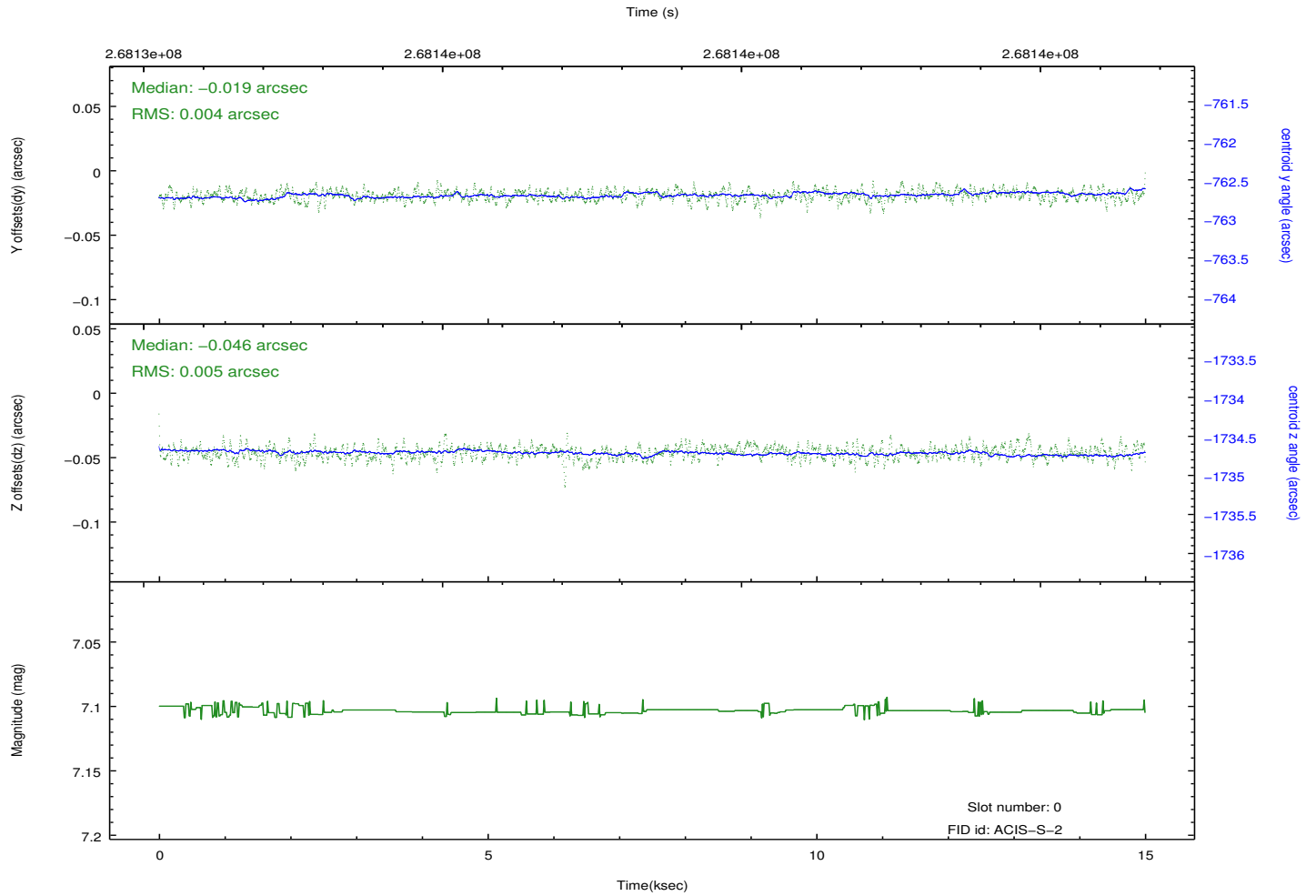
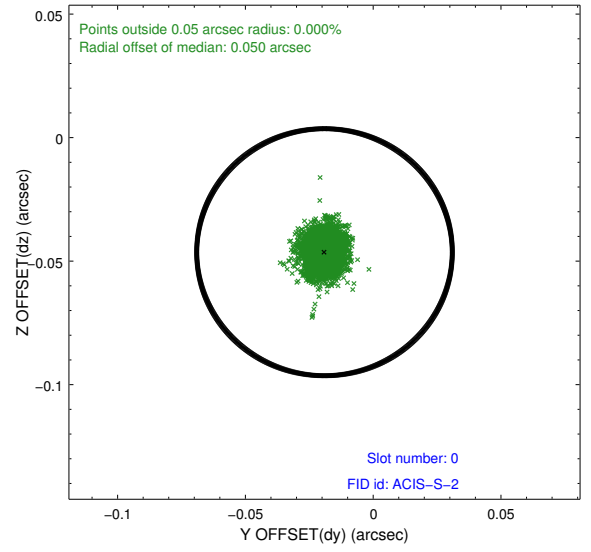
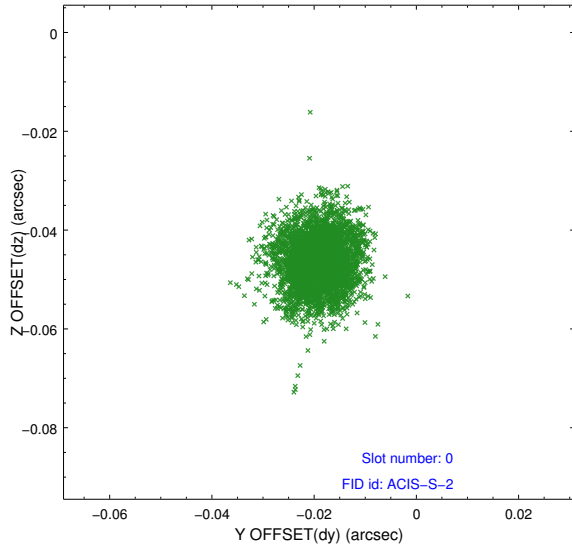


Time (s)

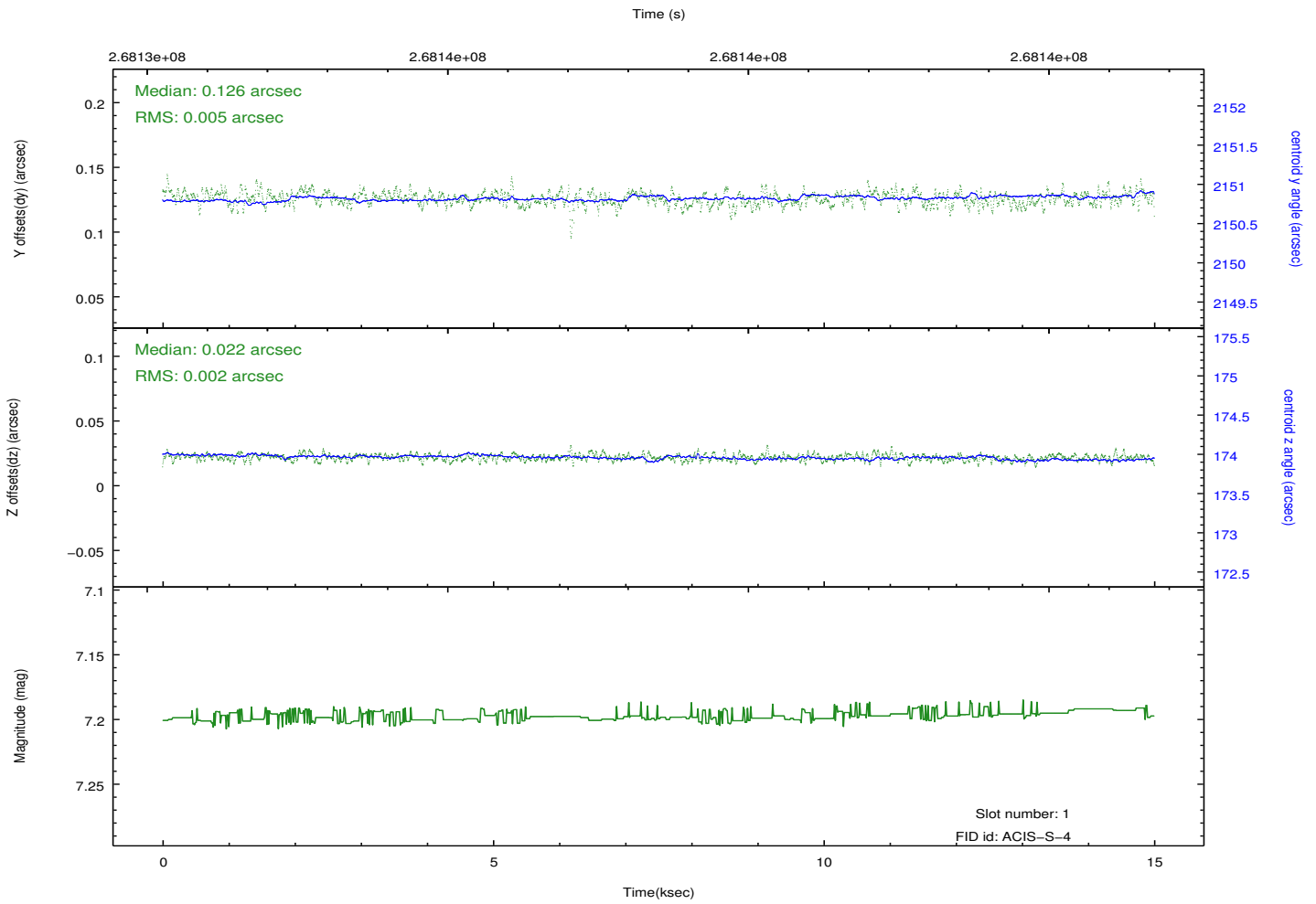
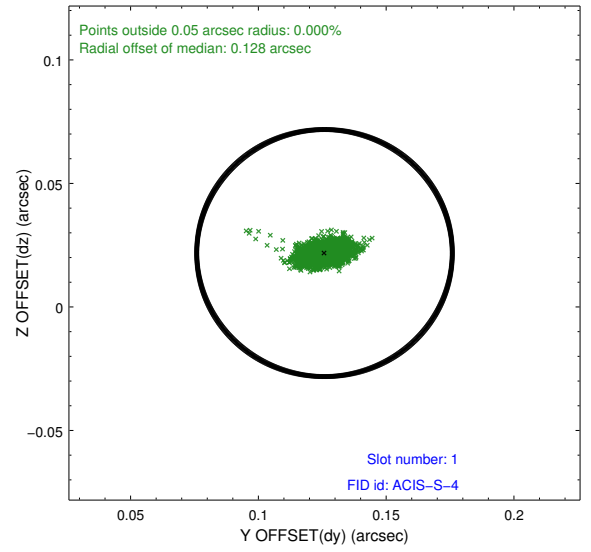
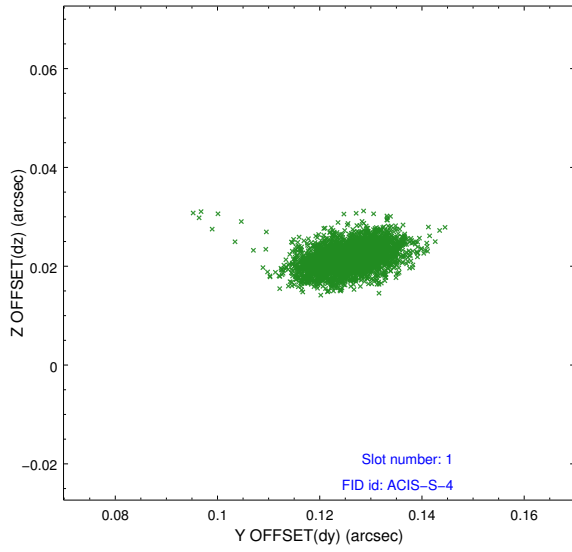


## 2.5 FID Slots

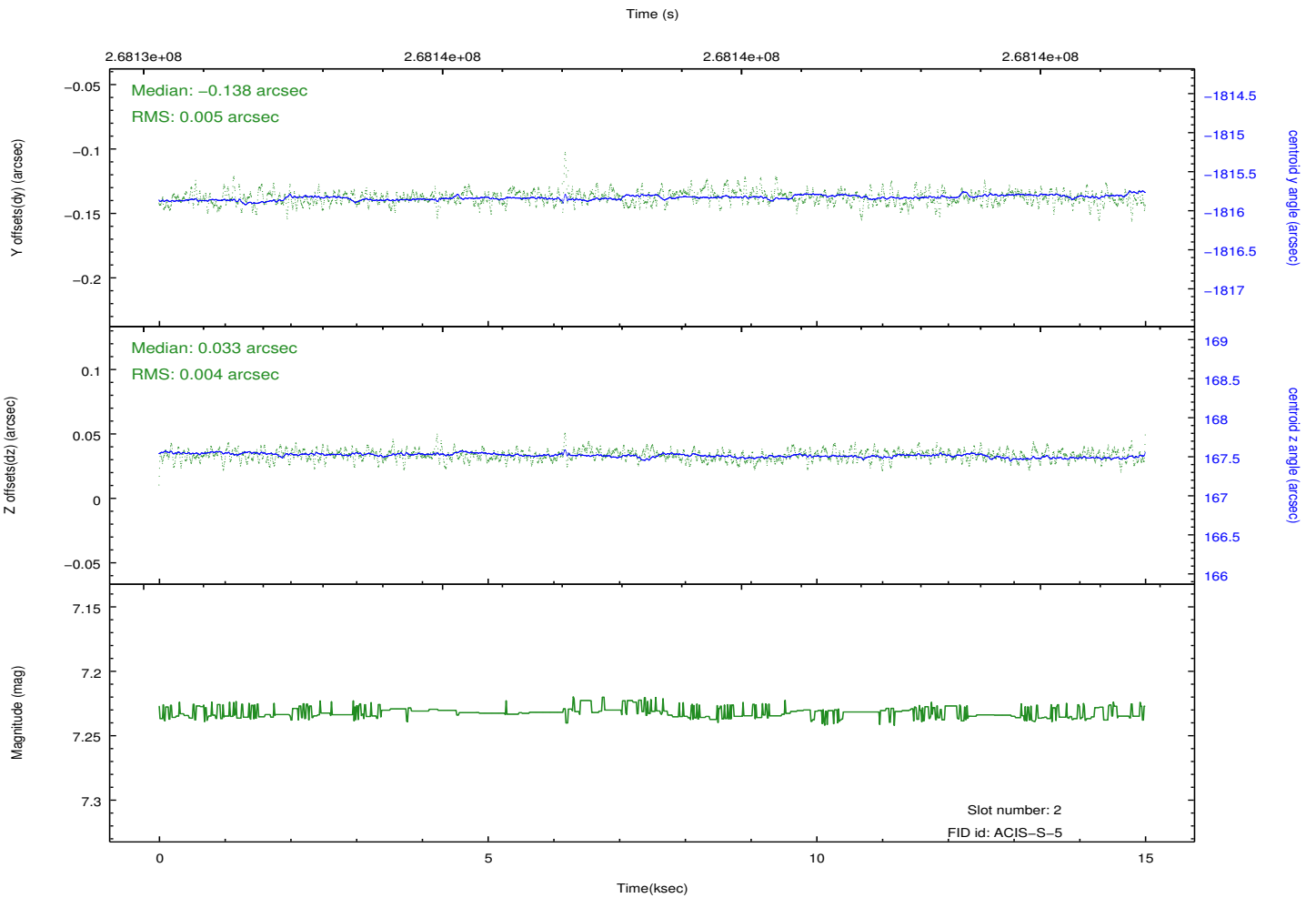
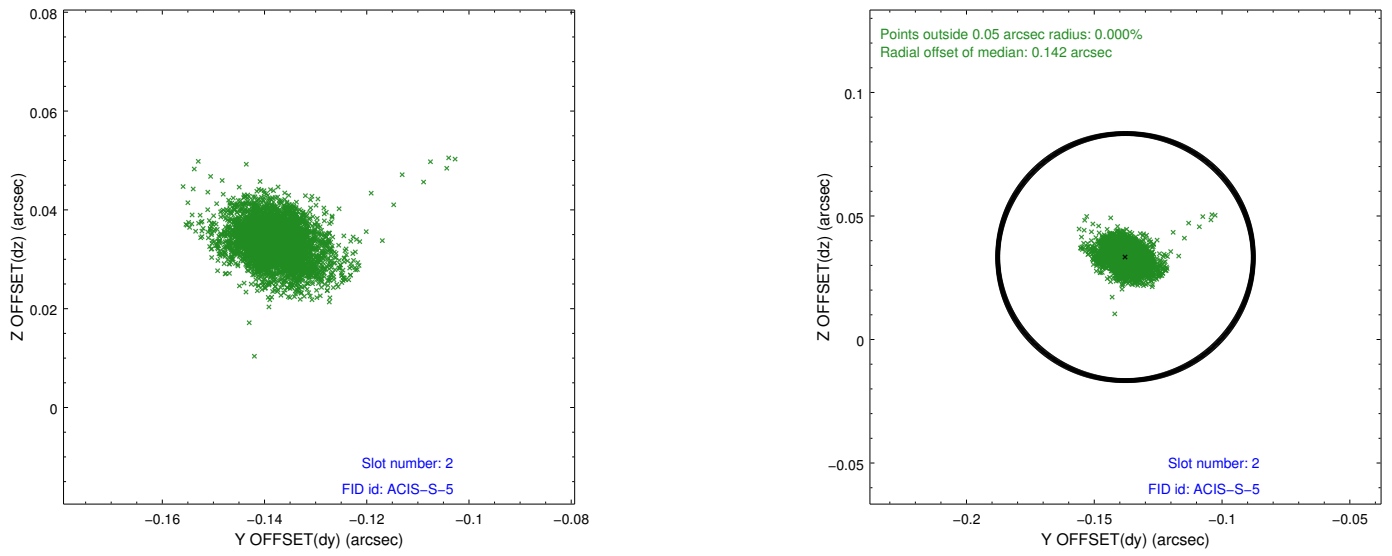
### 2.5.1 Slot 0



## 2.5.2 Slot 1



### 2.5.3 Slot 2



# A Summary

## A.1 Status

V&V Scientist	Beth Sundheim
V&V Date (YYYY-MM-DD)	2012.04.05
V&V Edition	1
V&V Disposition and Status	OK
V&V Charge Time	15.0032002

## A.2 Comments