

V&V Reference Report

L2 ASCDS Version : 8.4.3.1

Observation 6841 - L2 Version 2
Chandra X-Ray Center

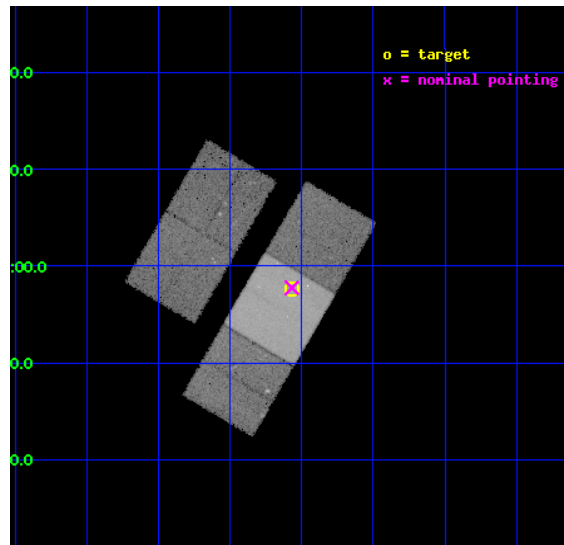
L2 Processing Date : Mar 30 2012

Contents

1	Front	2
2	OBI	3
2.1	OBI	3
2.1.1	Images	3
2.1.2	Bias	3
2.1.3	Parameters	4
2.1.4	Events	4
2.2	Compared Parameters	5
2.3	Aspect	6
2.4	Star Slots	9
2.4.1	Slot 3	9
2.4.2	Slot 4	10
2.4.3	Slot 5	11
2.4.4	Slot 6	12
2.4.5	Slot 7	13
2.5	FID Slots	14
2.5.1	Slot 0	14
2.5.2	Slot 1	15
2.5.3	Slot 2	16
A	Summary	17
A.1	Status	17
A.2	Comments	17

1 Front

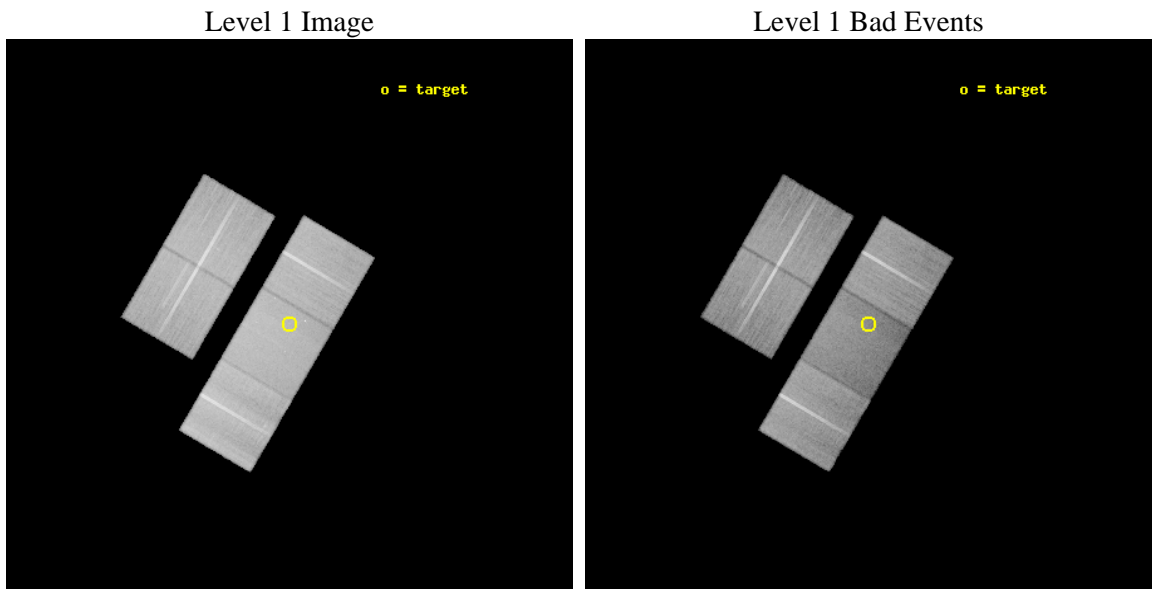
seq_num	701259	Sequence number
obs_id	6841	Observation id
title	Particle acceleration and the nature of multiple hotspots in FRII radio galaxies	Proposal title
observer	Dr Martin Hardcastle	Principal investigator
object	3C327	Source name
dtcycle	0	
cycle	P	events from which exps? Prim/Second/Both
ra_targ	240.64125	Observer's specified target RA [deg]
dec_targ	1.960472	Observer's specified target Dec [deg]
ra_nom	240.64206485588	Nominal RA [deg]
dec_nom	1.9623971890263	Nominal Dec [deg]
roll_nom	120.39106739403	Nominal Roll [deg]
revision	2	Processing version of data
ontime	40175.999922723	Sum of GTIs [s]
livetime	39651.070906591	Livetime [s]
ontime2	40172.85894236	Sum of GTIs [s]
ontime3	40172.859011978	Sum of GTIs [s]
ontime6	40172.858932465	Sum of GTIs [s]
ontime7	40175.999922723	Sum of GTIs [s]
ontime8	40172.858932436	Sum of GTIs [s]
l2events	257841	Number of level 2 events



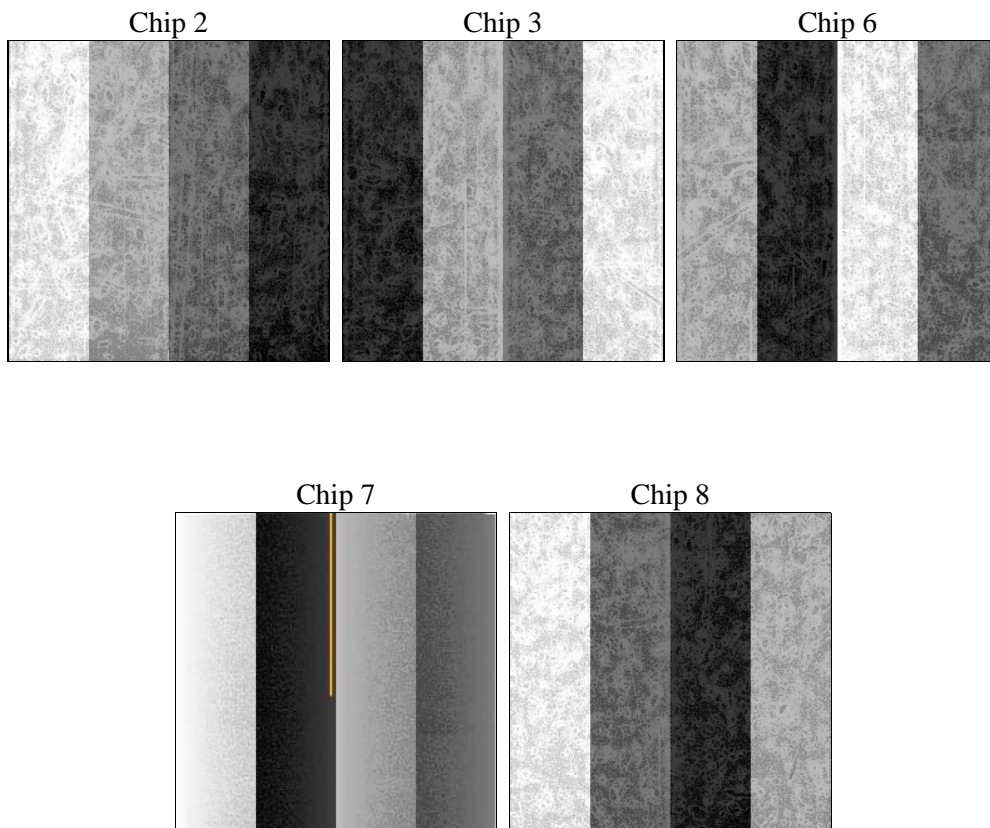
2 OBI

2.1 OBI

2.1.1 Images



2.1.2 Bias



2.1.3 Parameters

obi_num	0	Obi number	sched_exp_time	40000.000000	[s] Scheduled observation exposure time
ascdsver	8.4.3.1	Processing system revision	ontime	40175.999922723	Sum of GTIs [s]
caldbver	4.4.8	 	ontime2	40172.85894236	Sum of GTIs [s]
date	2012-03-30T19:31:19	Date and time of file creation	ontime3	40172.859011978	Sum of GTIs [s]
revision	2	Processing version of data	ontime6	40172.858932465	Sum of GTIs [s]
			ontime7	40175.999922723	Sum of GTIs [s]
			ontime8	40172.858932436	Sum of GTIs [s]
			l1events	1685083	Number of level 1 events

2.1.4 Events

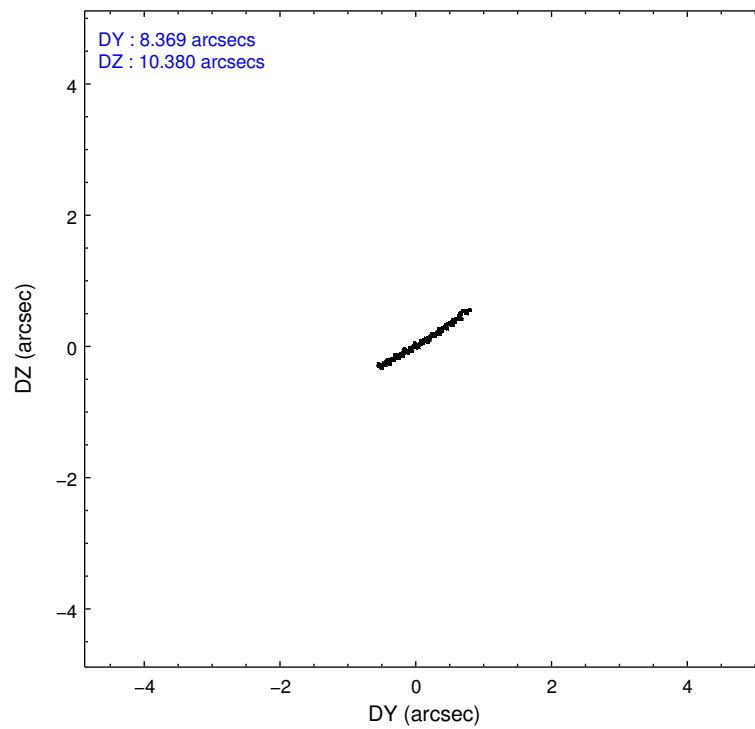
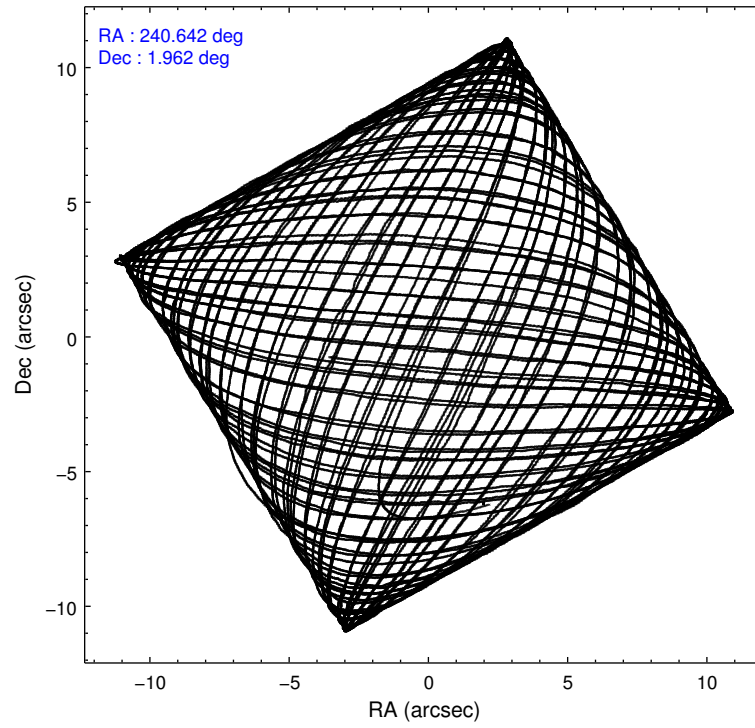
	ccd 2	ccd 3	ccd 6	ccd 7	ccd 8
level 1 events	321545	309382	319129	342586	392441
rejected events	291965	281131	287442	188674	301015
rejected %	90%	90%	90%	55%	76%

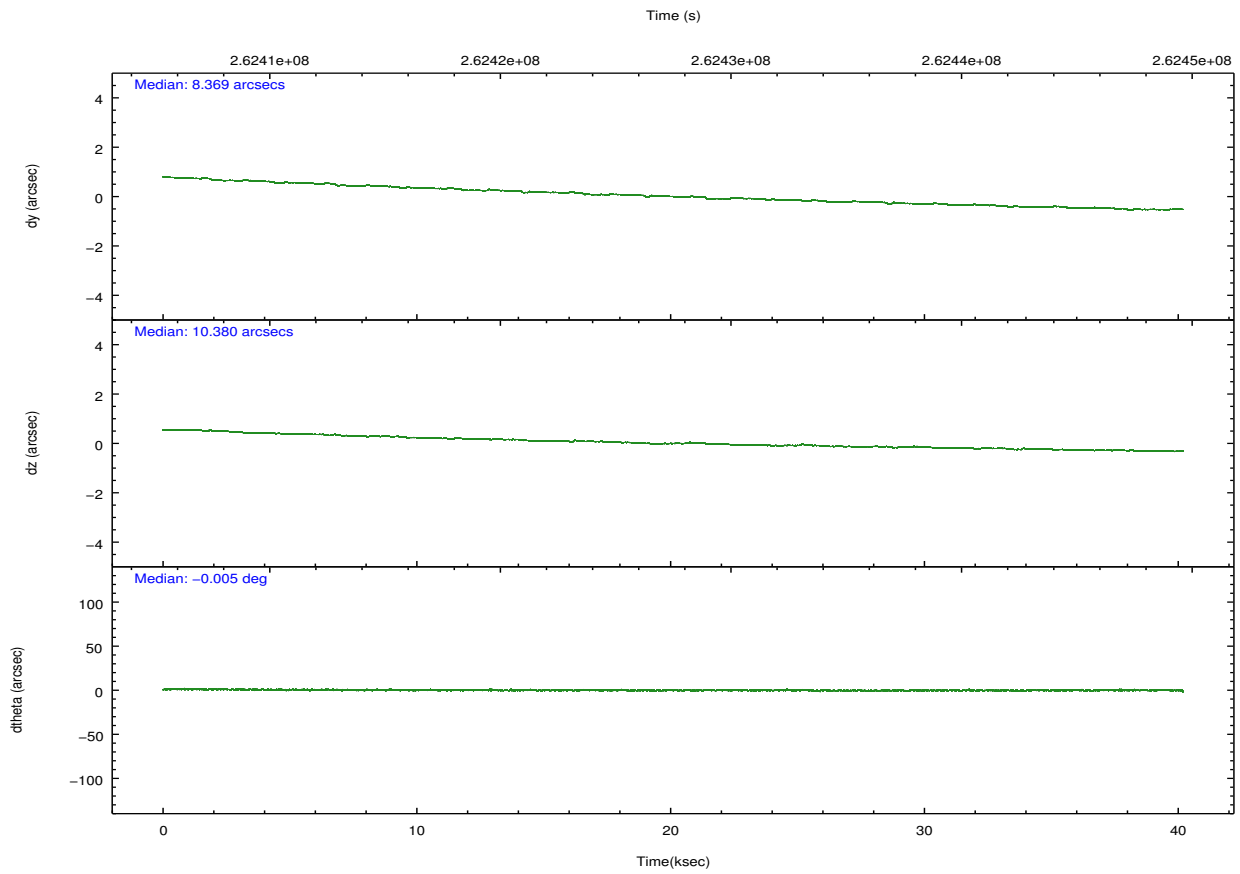
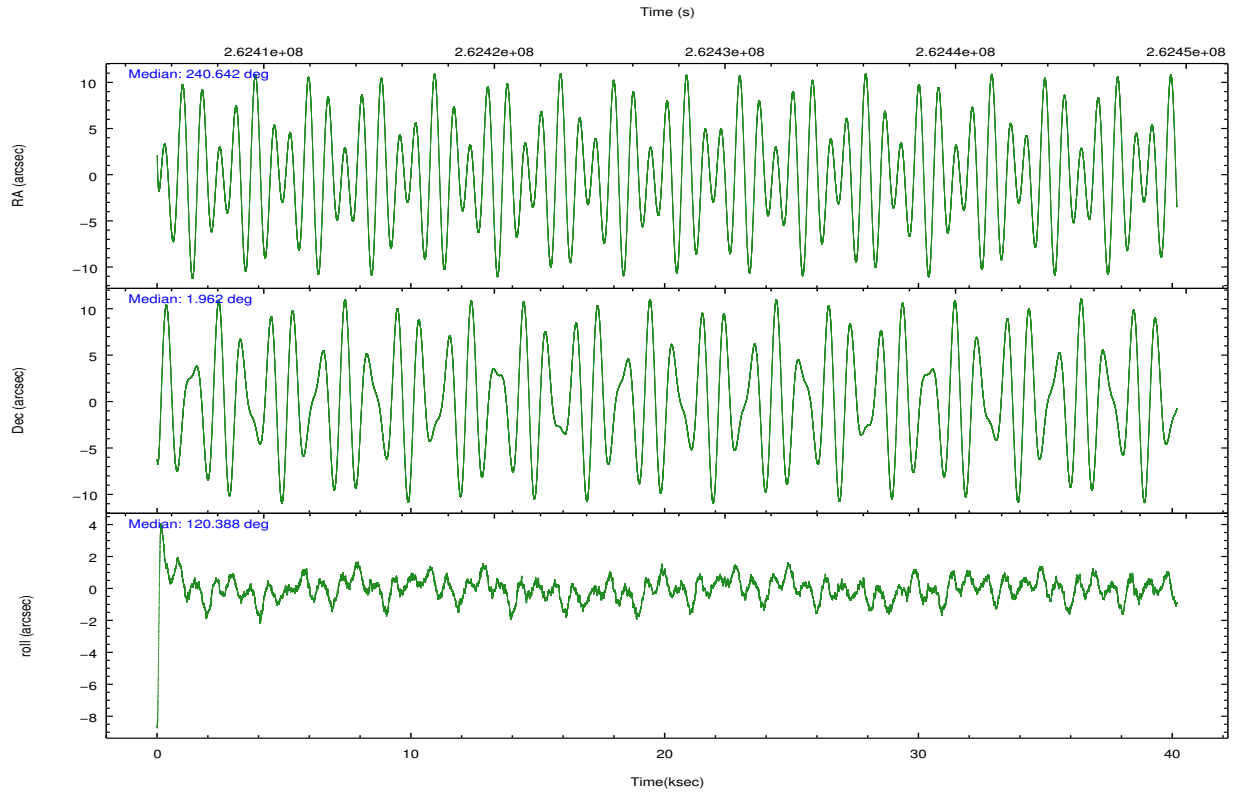
	ccd 2	ccd 3	ccd 6	ccd 7	ccd 8
grade 0 events	11392	10324	11667	14757	28772
	3%	3%	3%	4%	7%
grade 1 events	188	171	167	319	318
	0%	0%	0%	0%	0%
grade 2 events	6849	6127	6951	31844	20792
	2%	1%	2%	9%	5%
grade 3 events	3233	3302	3523	14679	9758
	1%	1%	1%	4%	2%
grade 4 events	3326	3276	3430	14775	9213
	1%	1%	1%	4%	2%
grade 5 events	9578	12236	12545	36267	17737
	2%	3%	3%	10%	4%
grade 6 events	5300	5727	6655	80568	24250
	1%	1%	2%	23%	6%
grade 7 events	281679	268219	274191	149377	281601
	87%	86%	85%	43%	71%

2.2 Compared Parameters

Parameter	Planned	Actual	Parameter	Planned	Actual
Instrument	ACIS	ACIS	Obspar format version number	7	7
Detector	ACIS-23678	ACIS-23678	Obspar file type	PREDICTED	ACTUAL
Grating	NONE	NONE	Obspar update status	NONE	UPDATED
Data mode	VFAINT	VFAINT	Number of optional ACIS chips dropped	0	0
Observation mode	POINTING	POINTING	On-chip summing requested	N	N
[deg] Pointing RA	240.665932	240.642064855881	Subarray requested	NONE	NONE
[deg] Pointing Dec	1.949255	1.962397189026349	Alternating exposures requested	N	N
[deg] Pointing Roll	120.233622	120.3910673940263	[s] Primary exposure time	0.000000	3.1
[mm] SIM focus pos	-0.684267	-0.6828225247311905			
[mm] SIM defocus	0	0.001444936568705701			
[mm] SIM translation stage pos	-190.132523	-190.1425803651734			
[mm] SIM translation stage offset	0	0.01005778216563158			
[s] Observation start time (MET)	262407578.184000	262406224.00315			
Observation start date	2006-04-26T02:58:33	2006-04-26T02:37:04			
[s] Observation end time (MET)	262447578.184000	262448650.80513			
Observation end date	2006-04-26T14:05:13	2006-04-26T14:24:10			
Read mode	TIMED	TIMED			

2.3 Aspect



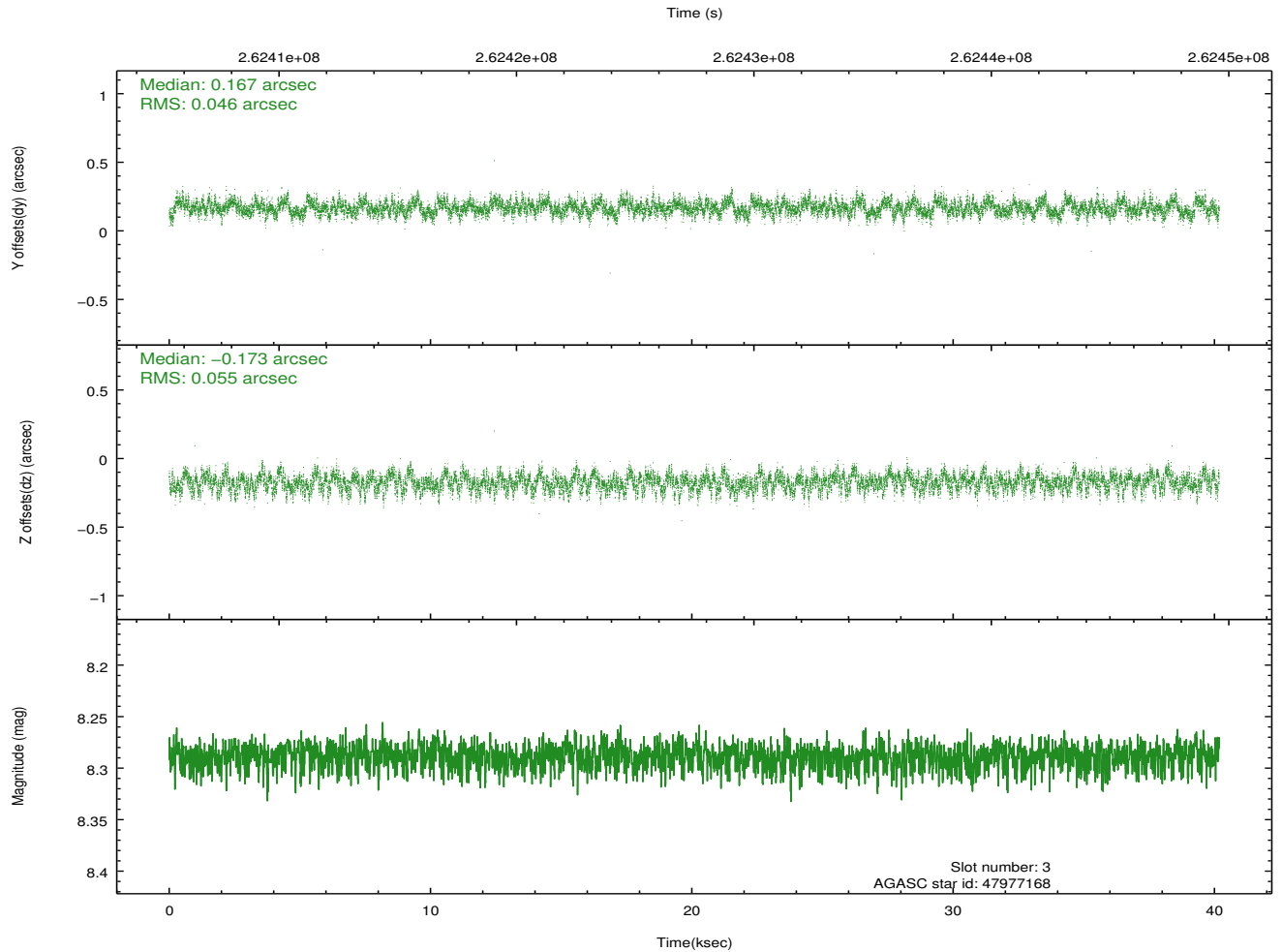
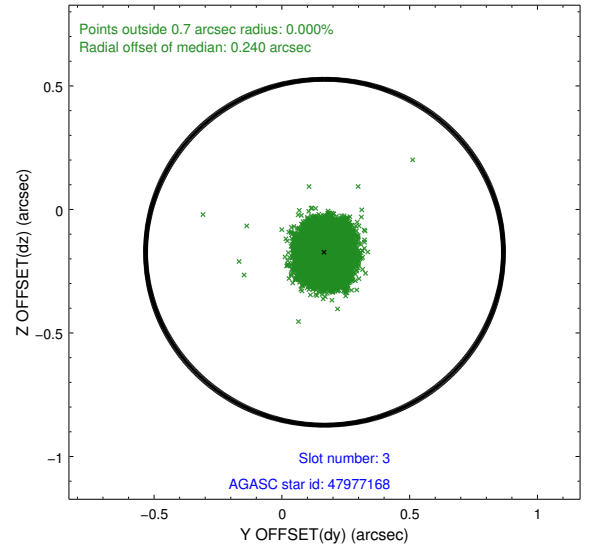
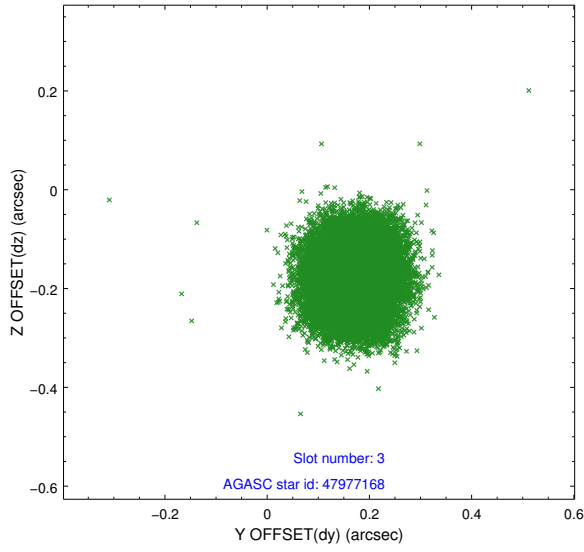


Slot Statistics

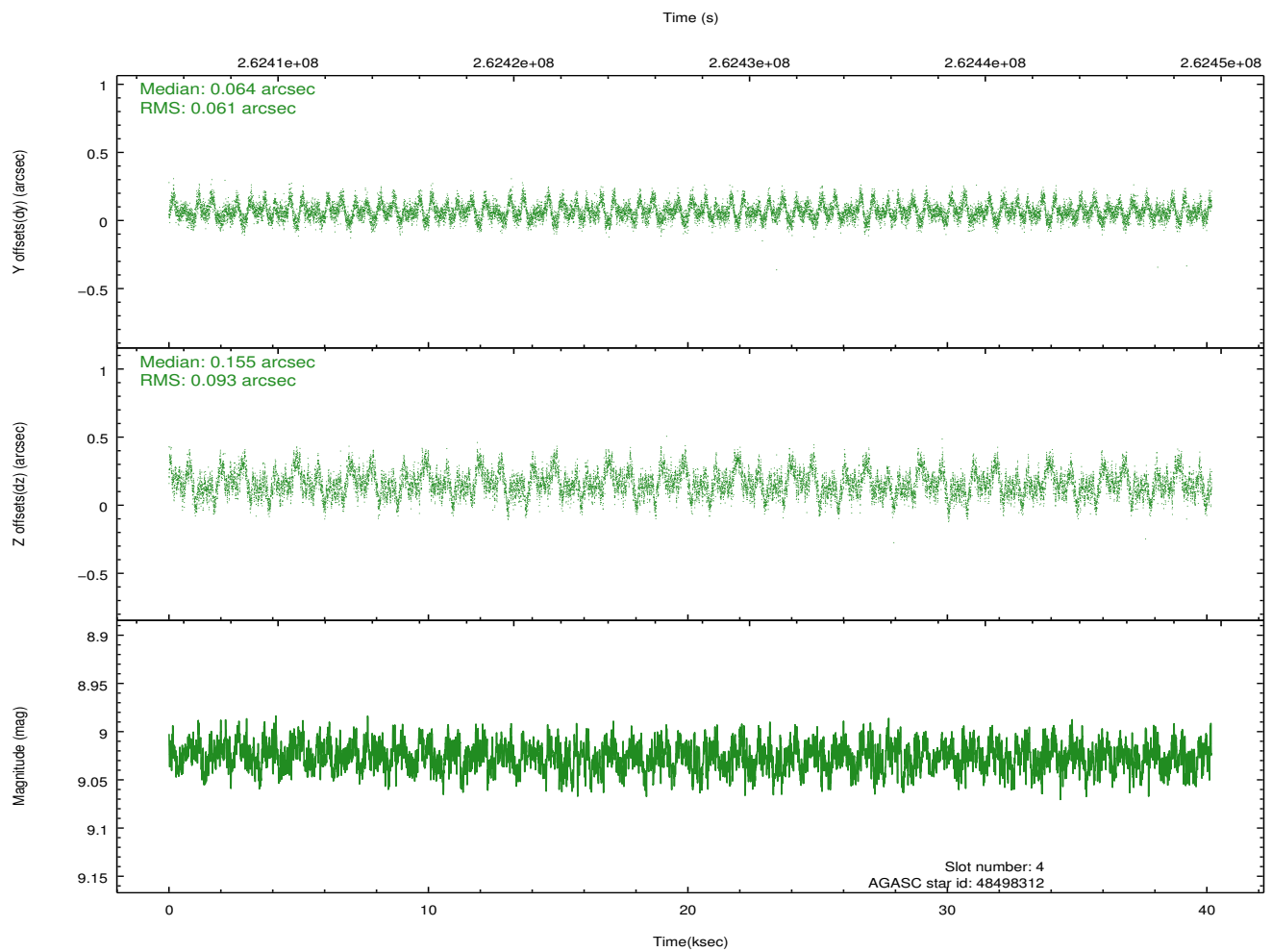
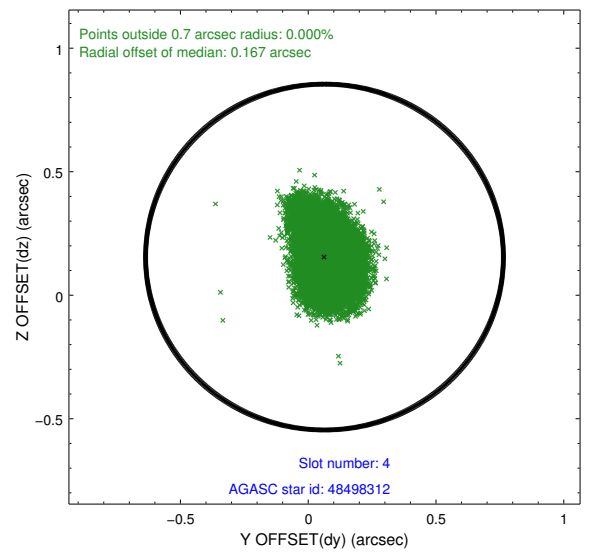
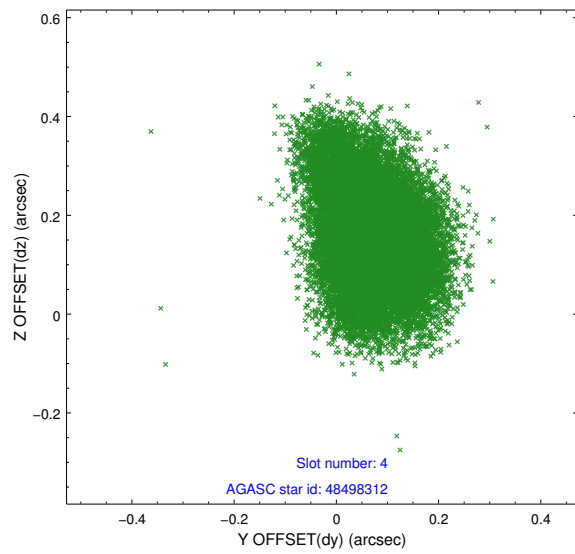
slot	status	id	mag	n_pts	med_dy	med_dz	dr1	dr2	ra	dec	mean_y	mean_z
0	FID	ACIS-S-2	7.11	9801	-0.050	-0.027	0.011	0.017	0.000000	0.000000	-761.21	-1731.67
1	FID	ACIS-S-4	7.21	9799	0.147	0.031	0.014	0.022	0.000000	0.000000	2152.22	176.92
2	FID	ACIS-S-5	7.23	9801	-0.128	0.005	0.015	0.023	0.000000	0.000000	-1814.15	170.49
3	GUIDE	47977168	8.29	19582	0.167	-0.173	0.077	0.122	240.738208	1.698432	-910.76	229.91
4	GUIDE	48498312	9.03	19589	0.064	0.155	0.118	0.201	241.090419	2.299432	321.01	-1953.64
5	GUIDE	48500784	8.05	19598	-0.004	-0.129	0.059	0.095	240.369285	2.064291	895.63	713.60
6	GUIDE	48501408	7.70	19596	-0.070	0.135	0.120	0.175	240.648810	2.658835	2238.49	-1232.54
7	GUIDE	47974944	7.29	19599	-0.173	0.007	0.064	0.101	241.560727	1.711024	-2361.26	-2350.33

2.4 Star Slots

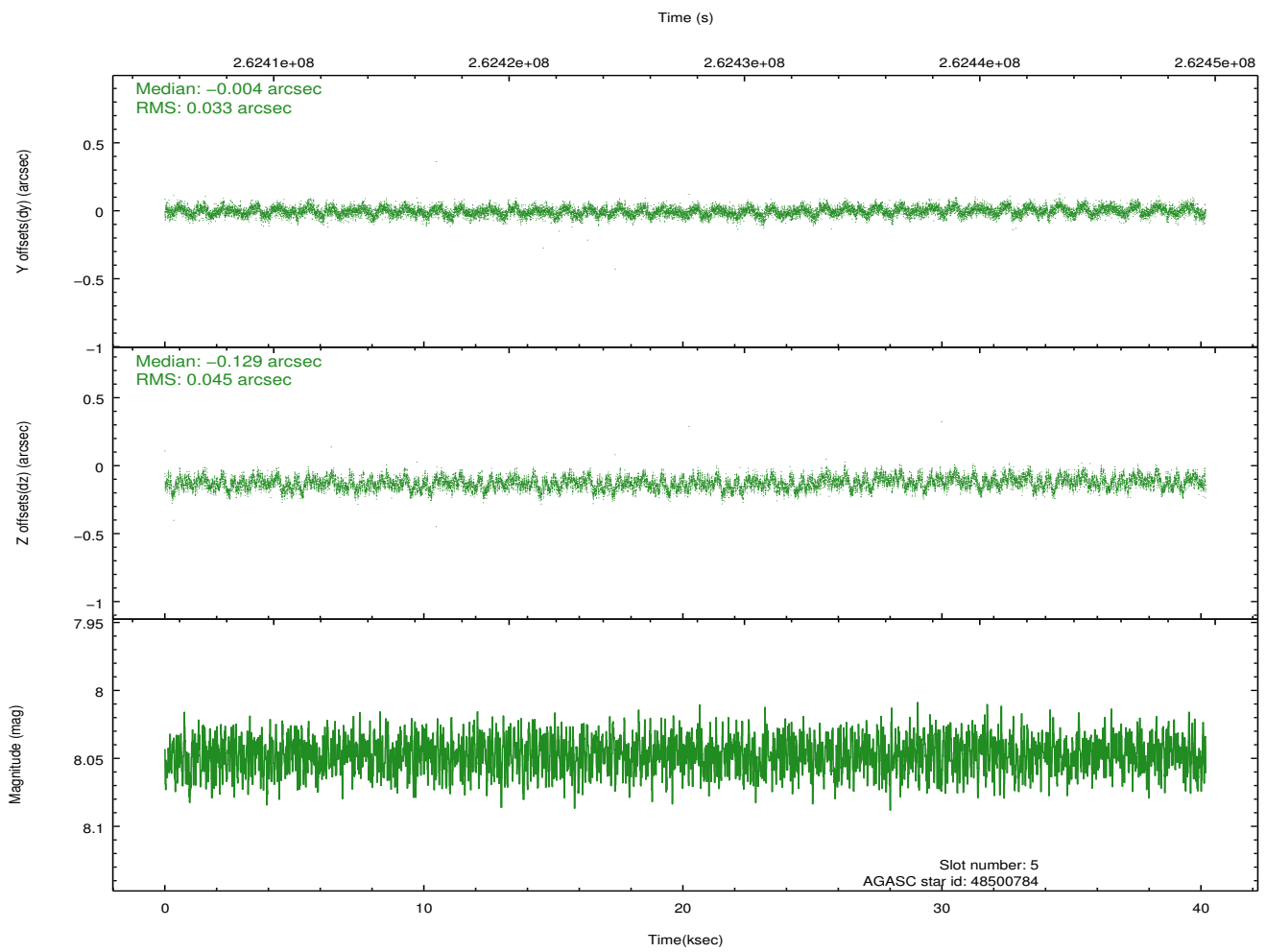
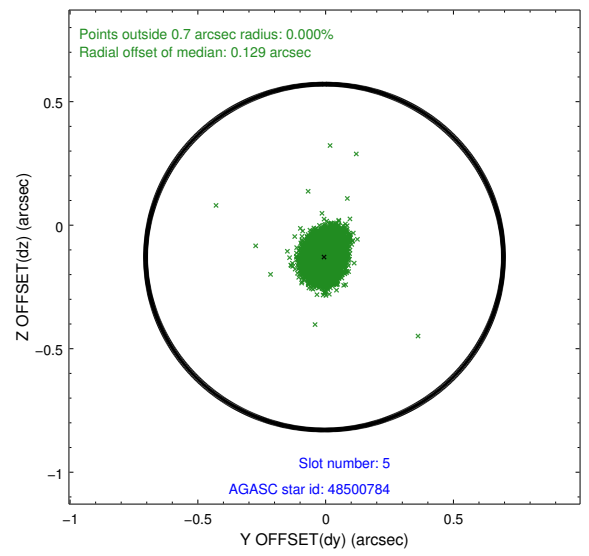
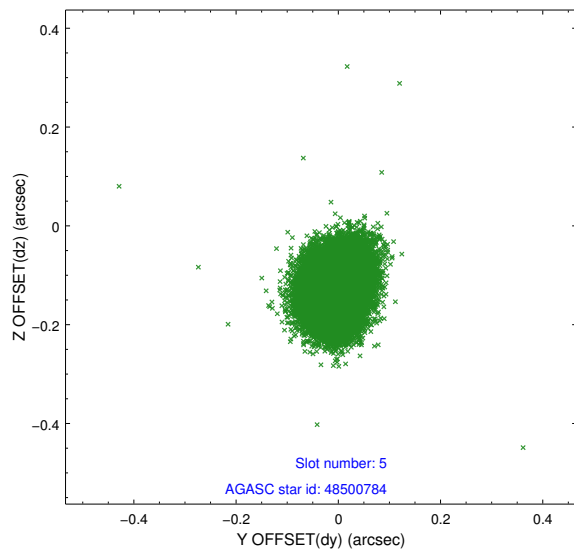
2.4.1 Slot 3



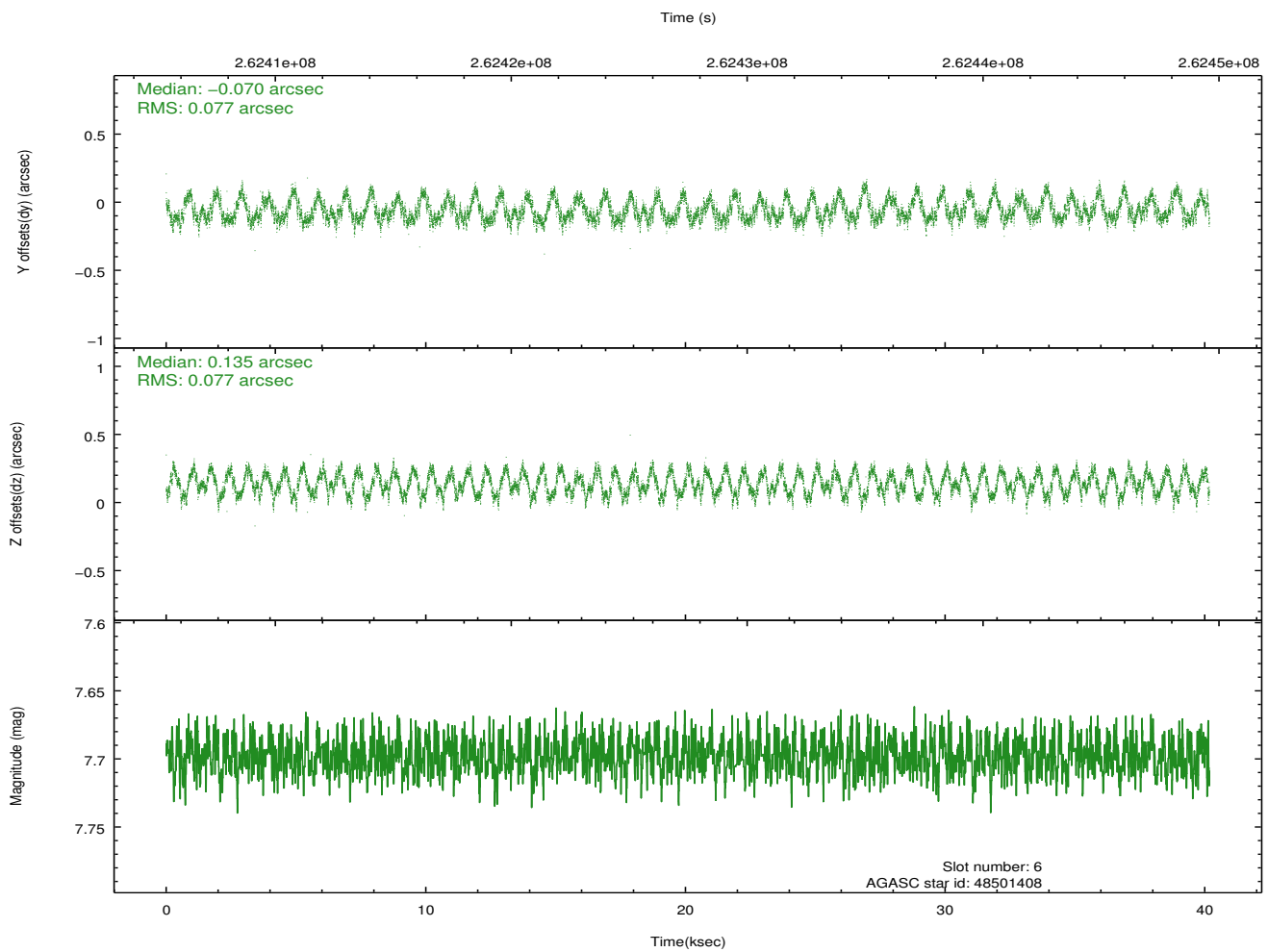
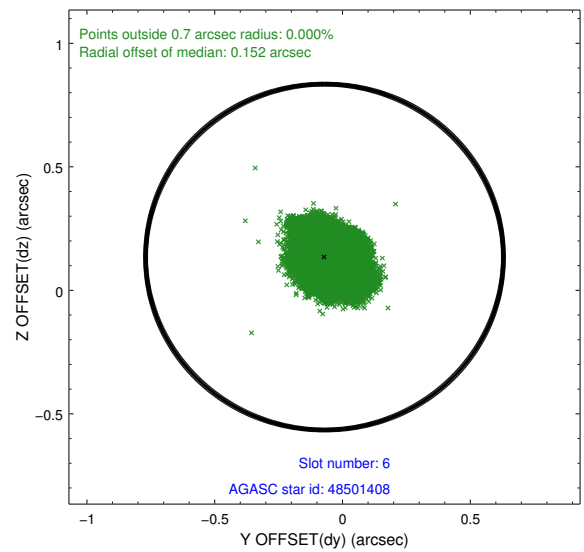
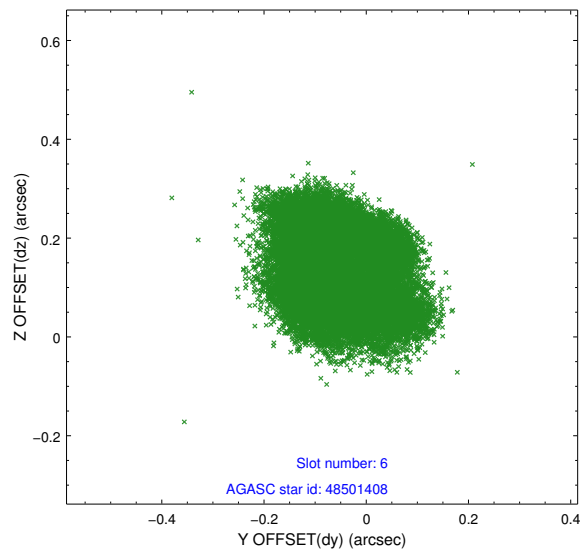
2.4.2 Slot 4



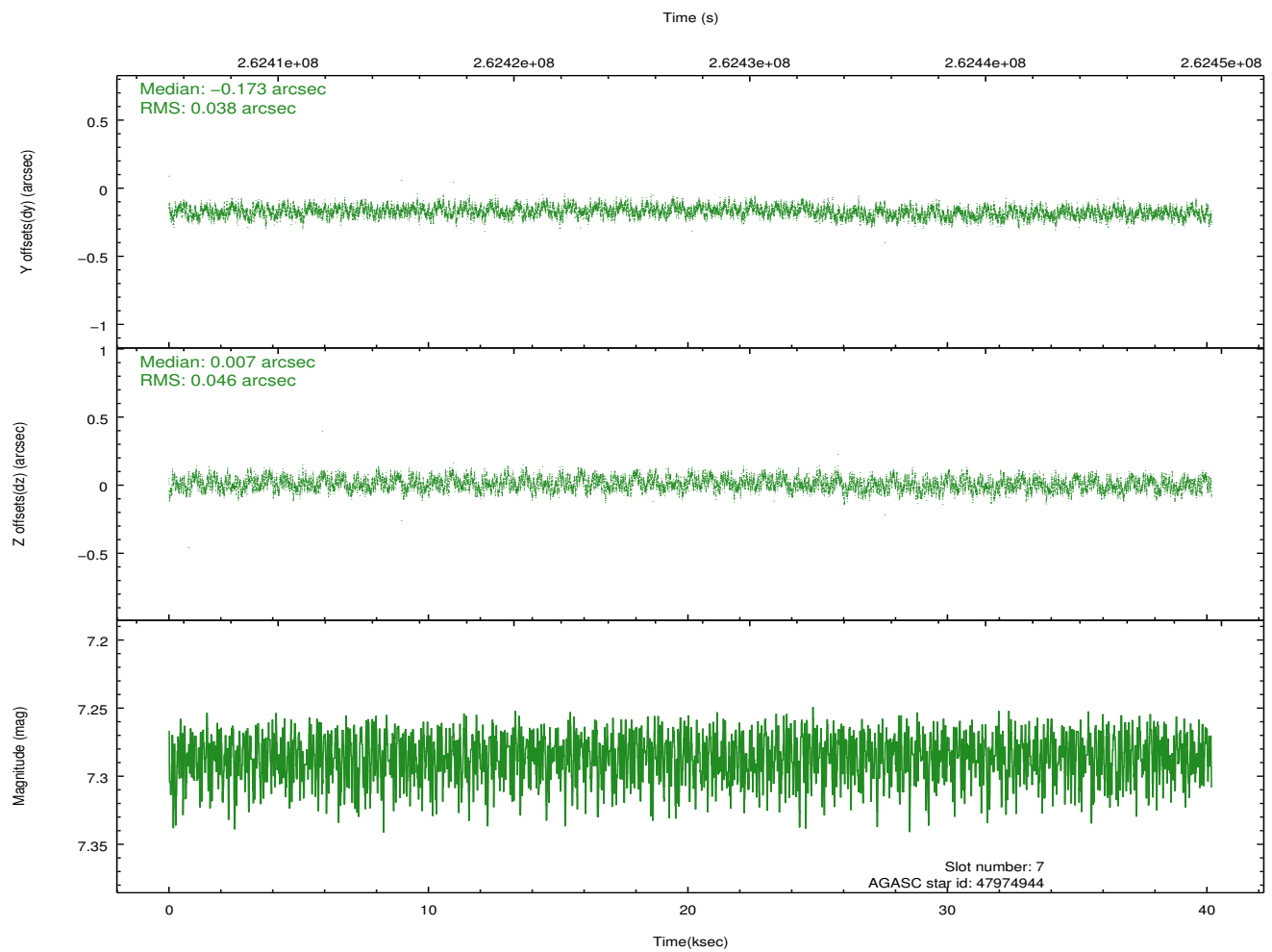
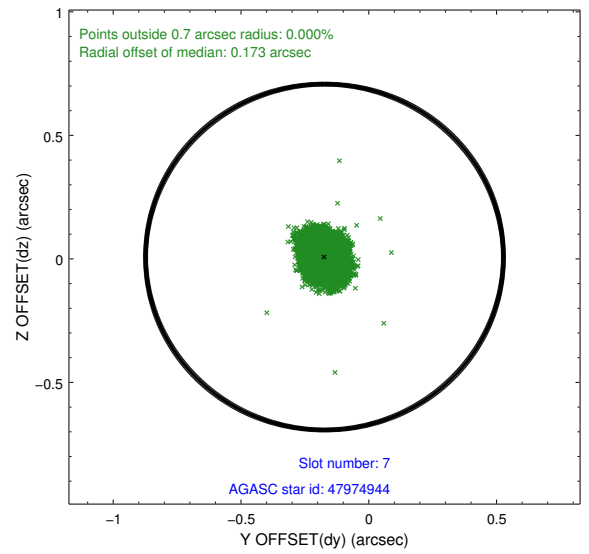
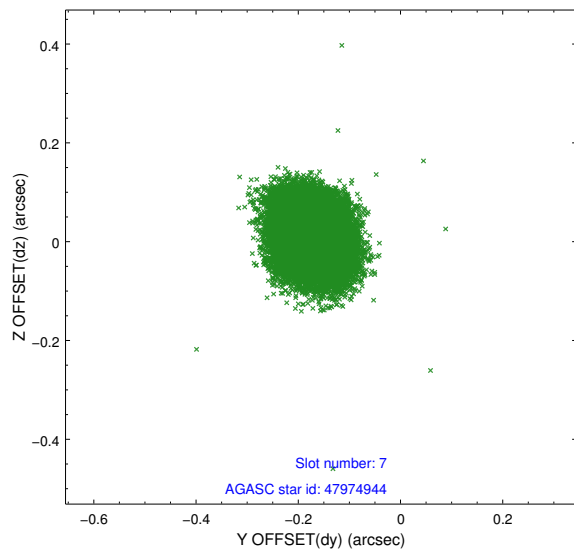
2.4.3 Slot 5



2.4.4 Slot 6

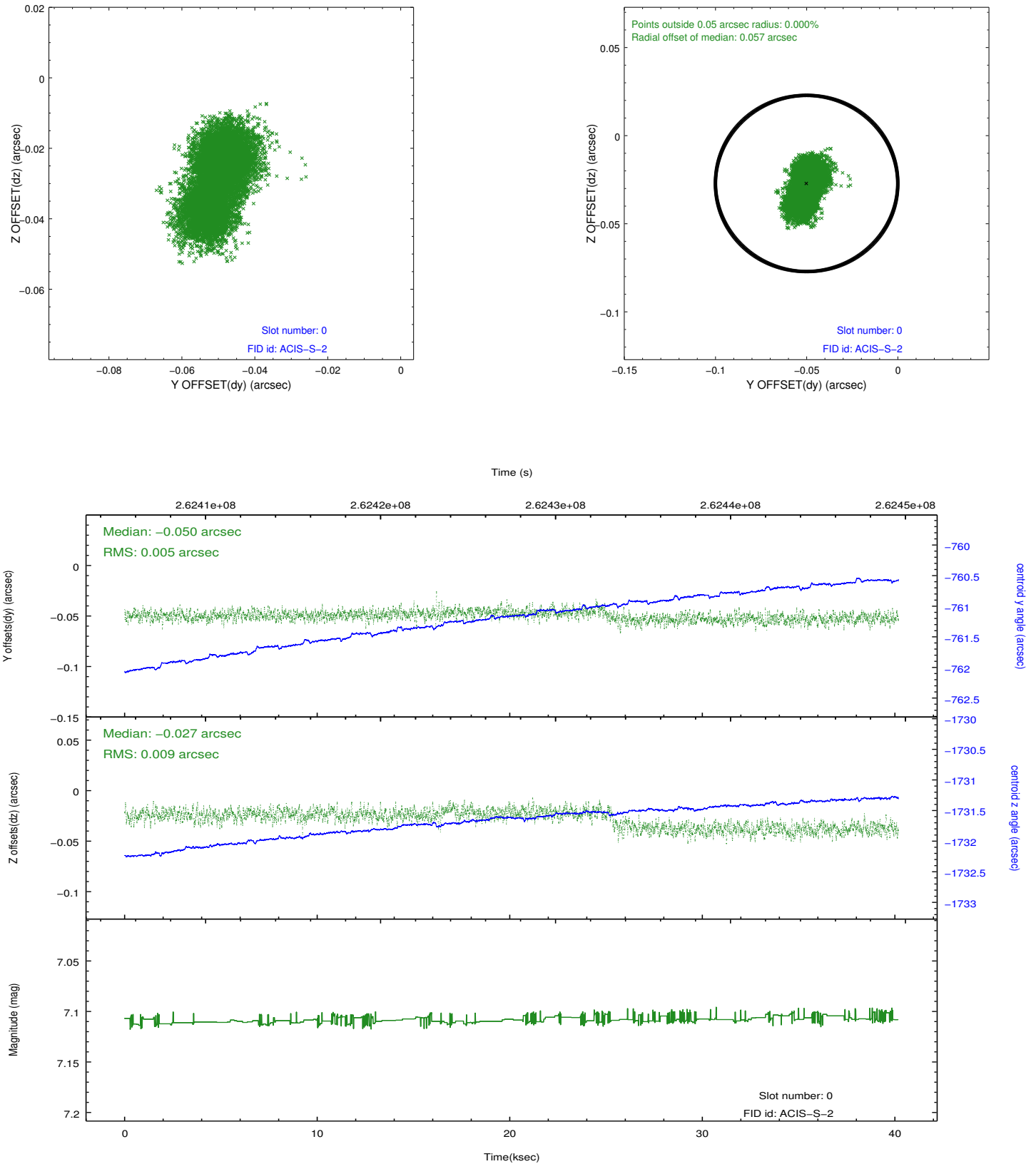


2.4.5 Slot 7

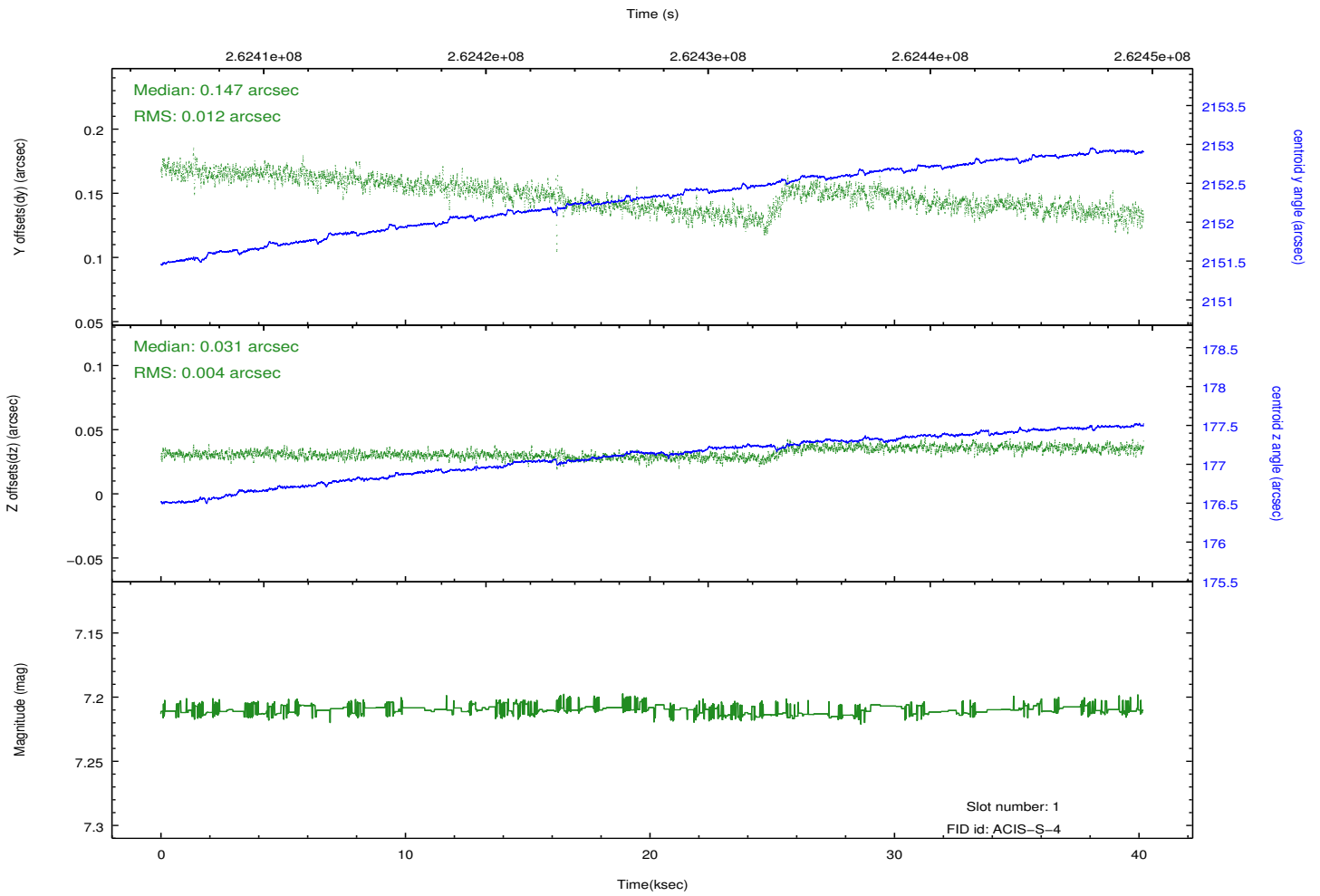
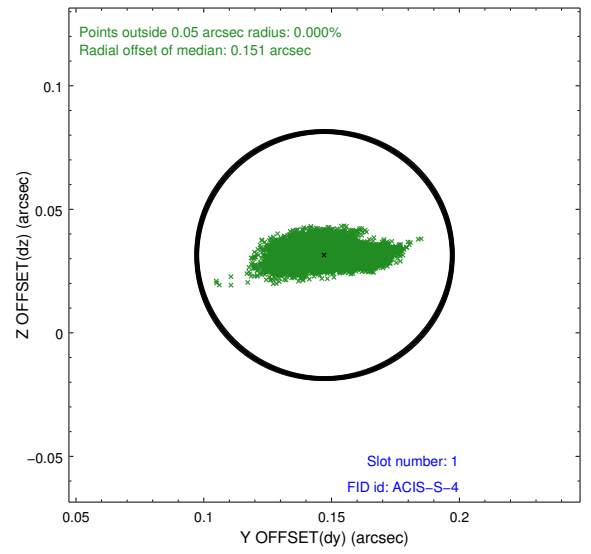
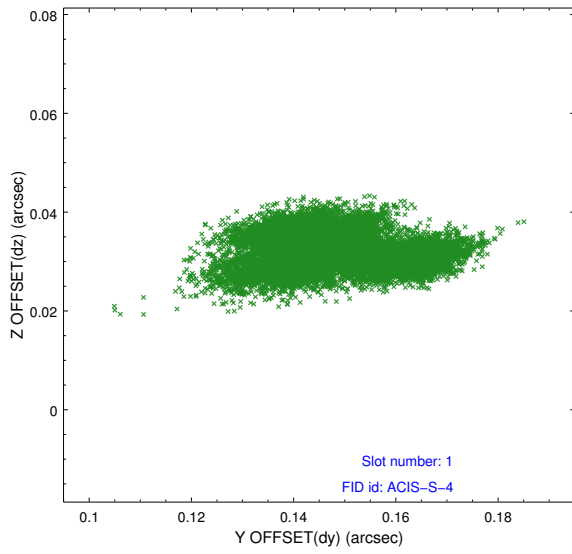


2.5 FID Slots

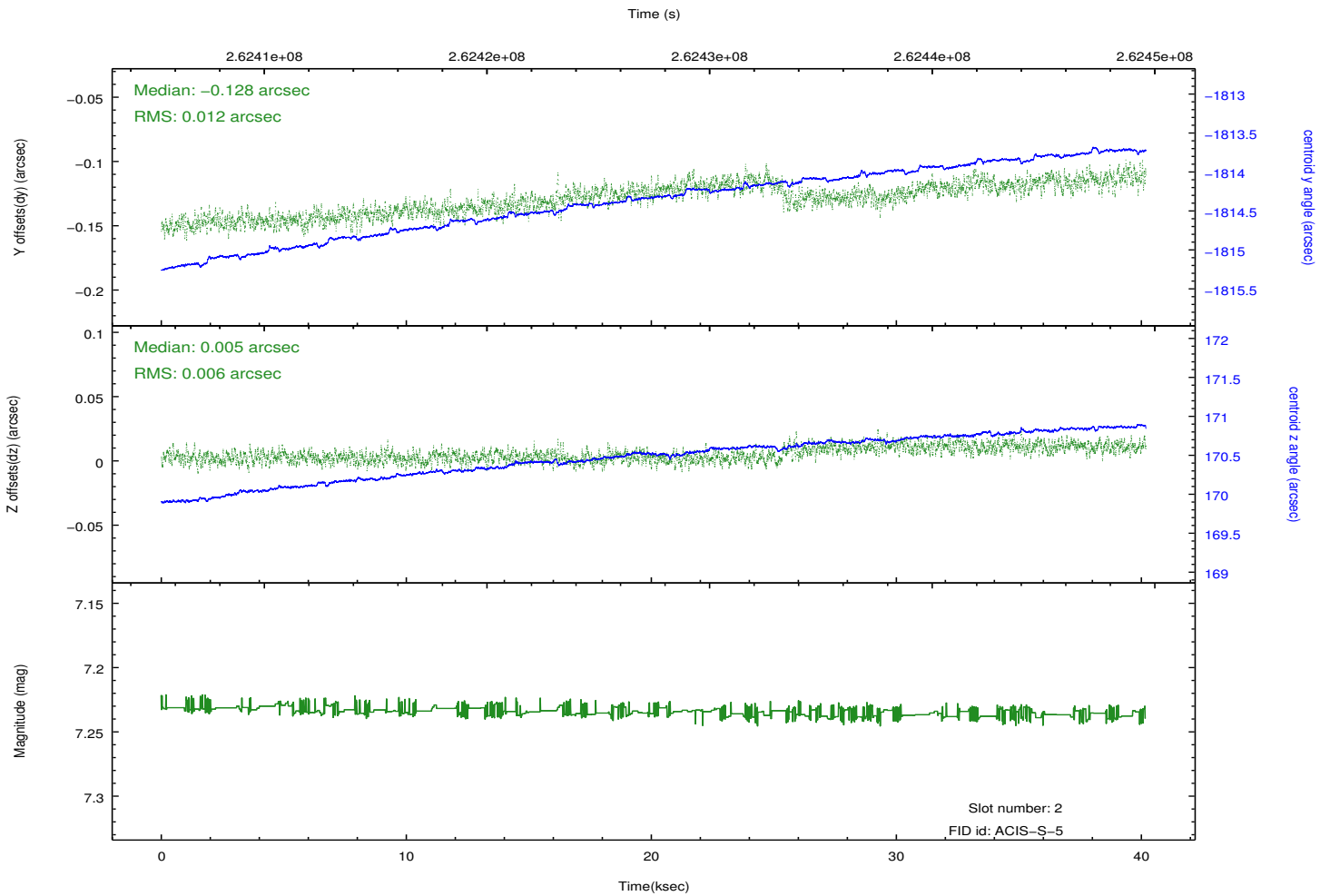
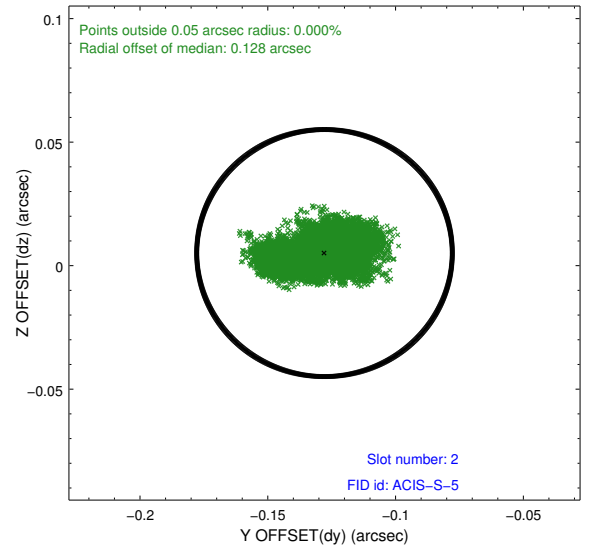
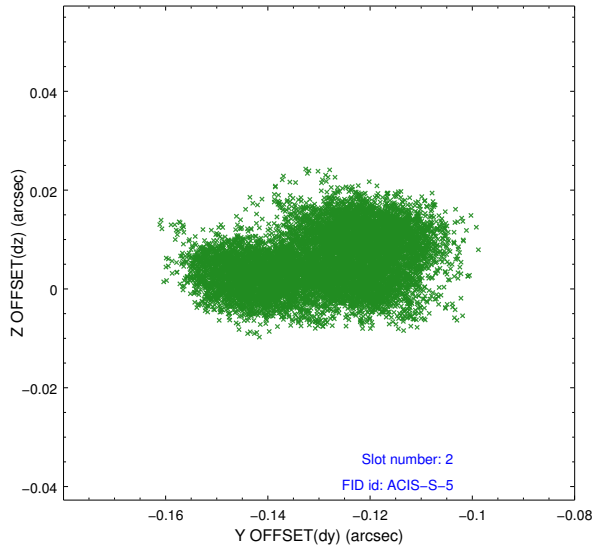
2.5.1 Slot 0



2.5.2 Slot 1



2.5.3 Slot 2



A Summary

A.1 Status

V&V Scientist	Beth Sundheim
V&V Date (YYYY-MM-DD)	2012.04.02
V&V Edition	1
V&V Disposition and Status	OK
V&V Charge Time	40.1759999

A.2 Comments