

V&V Reference Report

L2 ASCDS Version : 8.4.3

Observation 6851 - L2 Version 2
Chandra X-Ray Center

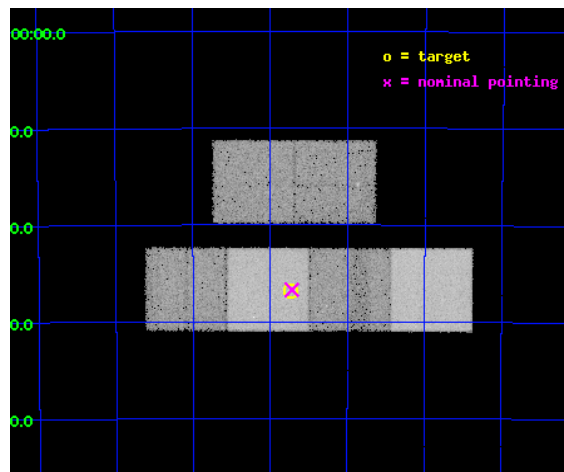
L2 Processing Date : Apr 1 2012

Contents

1	Front	2
2	OBI	3
2.1	OBI	3
2.1.1	Images	3
2.1.2	Bias	3
2.1.3	Parameters	4
2.1.4	Events	4
2.2	Compared Parameters	5
2.3	Aspect	6
2.4	Star Slots	9
2.4.1	Slot 3	9
2.4.2	Slot 4	10
2.4.3	Slot 5	11
2.4.4	Slot 6	12
2.4.5	Slot 7	13
2.5	FID Slots	14
2.5.1	Slot 0	14
2.5.2	Slot 1	15
2.5.3	Slot 2	16
A	Summary	17
A.1	Status	17
A.2	Comments	17

1 Front

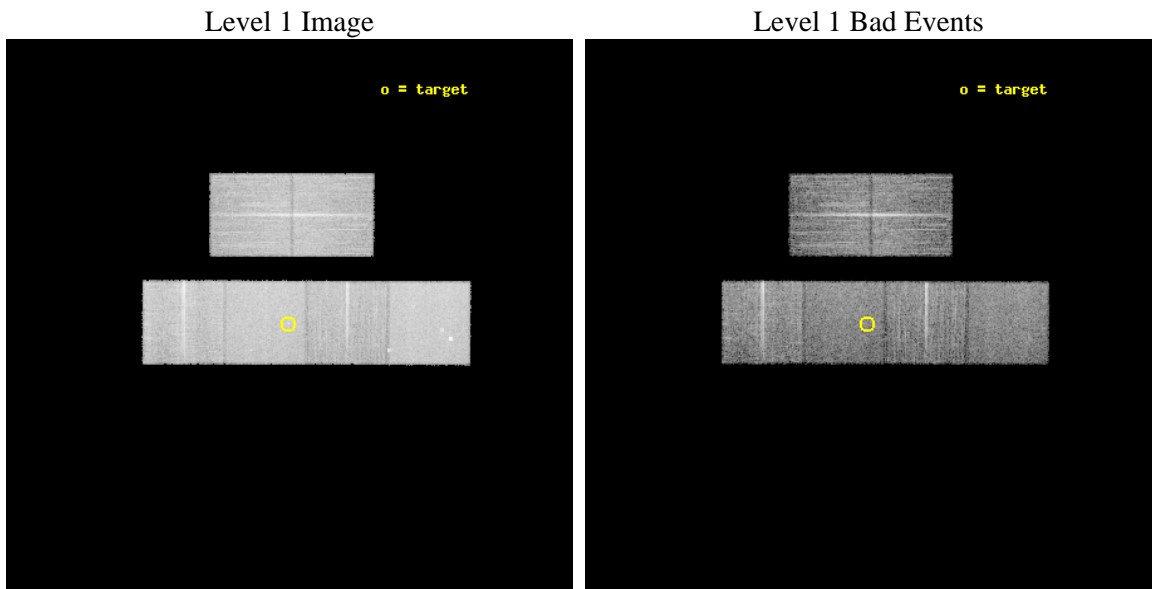
seq_num	701269	Sequence number
obs_id	6851	Observation id
title	Unveiling obscured AGNs in close pairs of similar sized galaxies	P
observer	Dr. Nora Loiseau	Principal investigator
object	AM 0316-573	Source name
dtcycle	0	
cycle	P	events from which exps? Prim/Second/Both
ra_targ	49.4325	Observer's specified target RA [deg]
dec_targ	-57.446944	Observer's specified target Dec [deg]
ra_nom	49.430125641337	Nominal RA [deg]
dec_nom	-57.445254212177	Nominal Dec [deg]
roll_nom	180.13000897793	Nominal Roll [deg]
revision	2	Processing version of data
ontime	10024.699517488	Sum of GTIs [s]
livetime	9897.7607360487	Livetime [s]
ontime2	10024.740557492	Sum of GTIs [s]
ontime3	10024.576397479	Sum of GTIs [s]
ontime5	10024.658477485	Sum of GTIs [s]
ontime6	10024.617437482	Sum of GTIs [s]
ontime7	10024.699517488	Sum of GTIs [s]
ontime8	10024.535357505	Sum of GTIs [s]
l2events	205494	Number of level 2 events



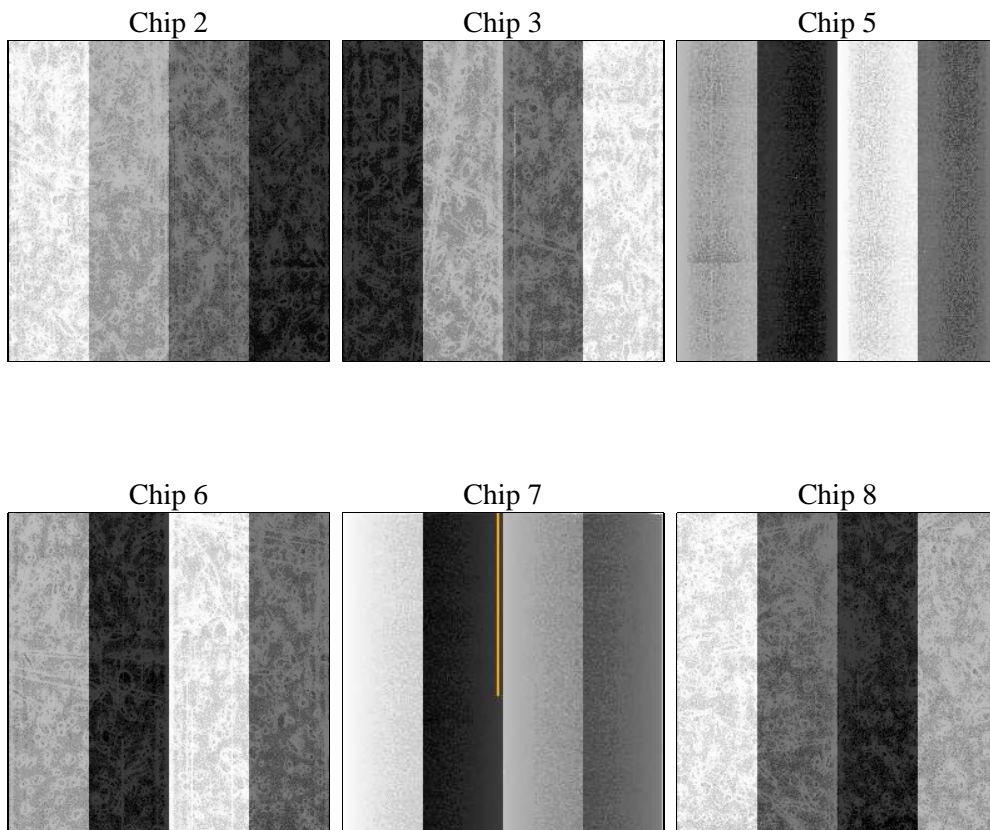
2 OBI

2.1 OBI

2.1.1 Images



2.1.2 Bias



2.1.3 Parameters

obi_num	0	Obi number	sched_exp_time	10000.000000	[s] Scheduled observation exposure time
ascdsver	8.4.3	Processing system revision	ontime	10024.699517488	Sum of GTIs [s]
caldbver	4.4.9	 	ontime2	10024.740557492	Sum of GTIs [s]
date	2012-04-01T04:54:58	Date and time of file creation	ontime3	10024.576397479	Sum of GTIs [s]
revision	2	Processing version of data	ontime5	10024.658477485	Sum of GTIs [s]
			ontime6	10024.617437482	Sum of GTIs [s]
			ontime7	10024.699517488	Sum of GTIs [s]
			ontime8	10024.535357505	Sum of GTIs [s]
			l1events	702302	Number of level 1 events

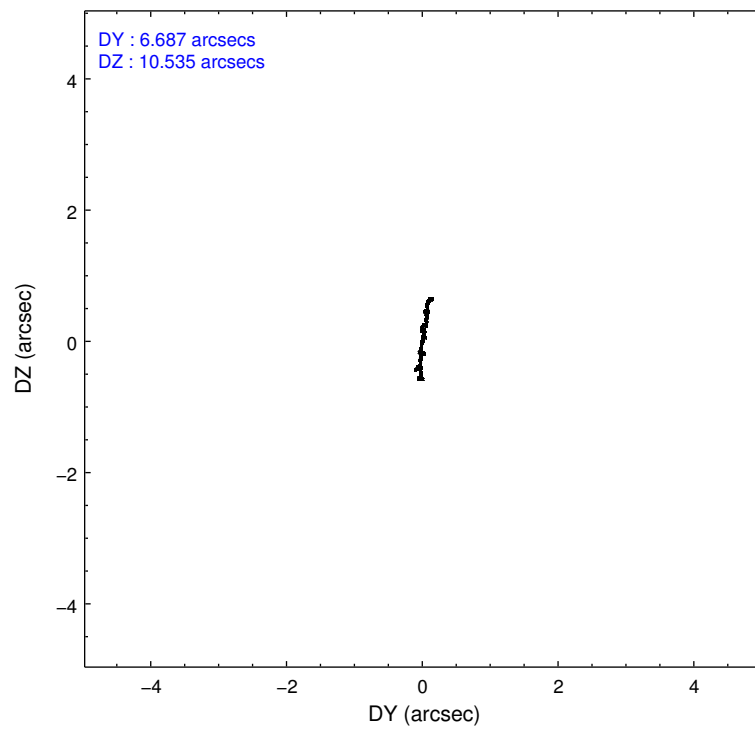
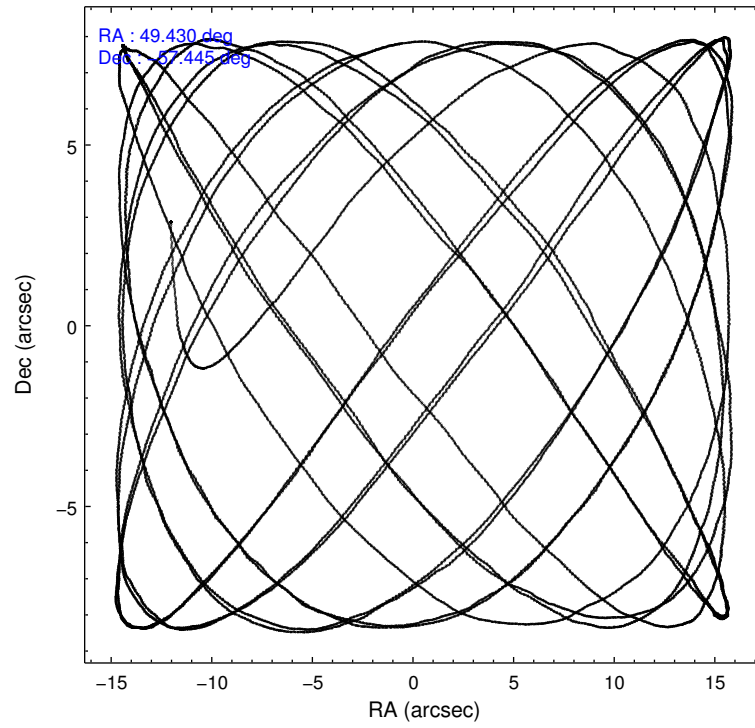
2.1.4 Events

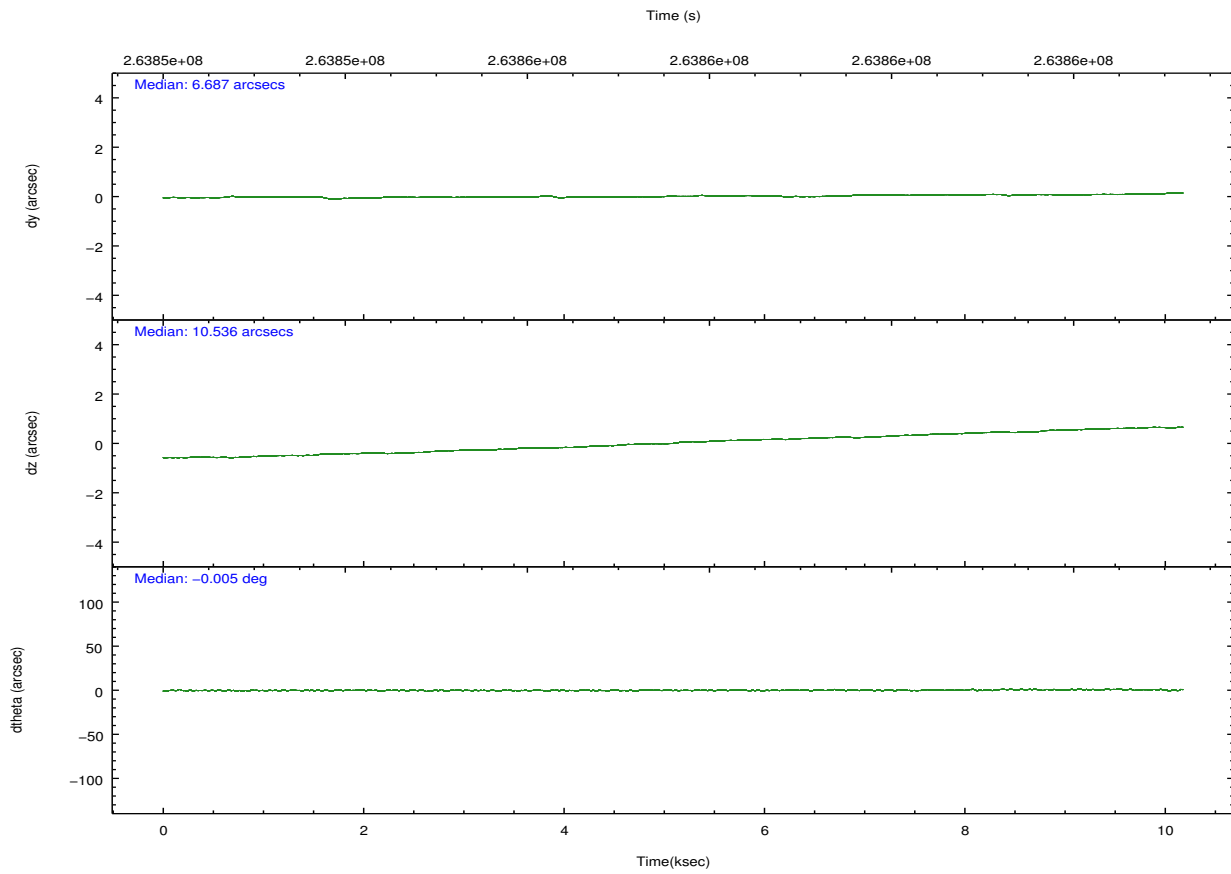
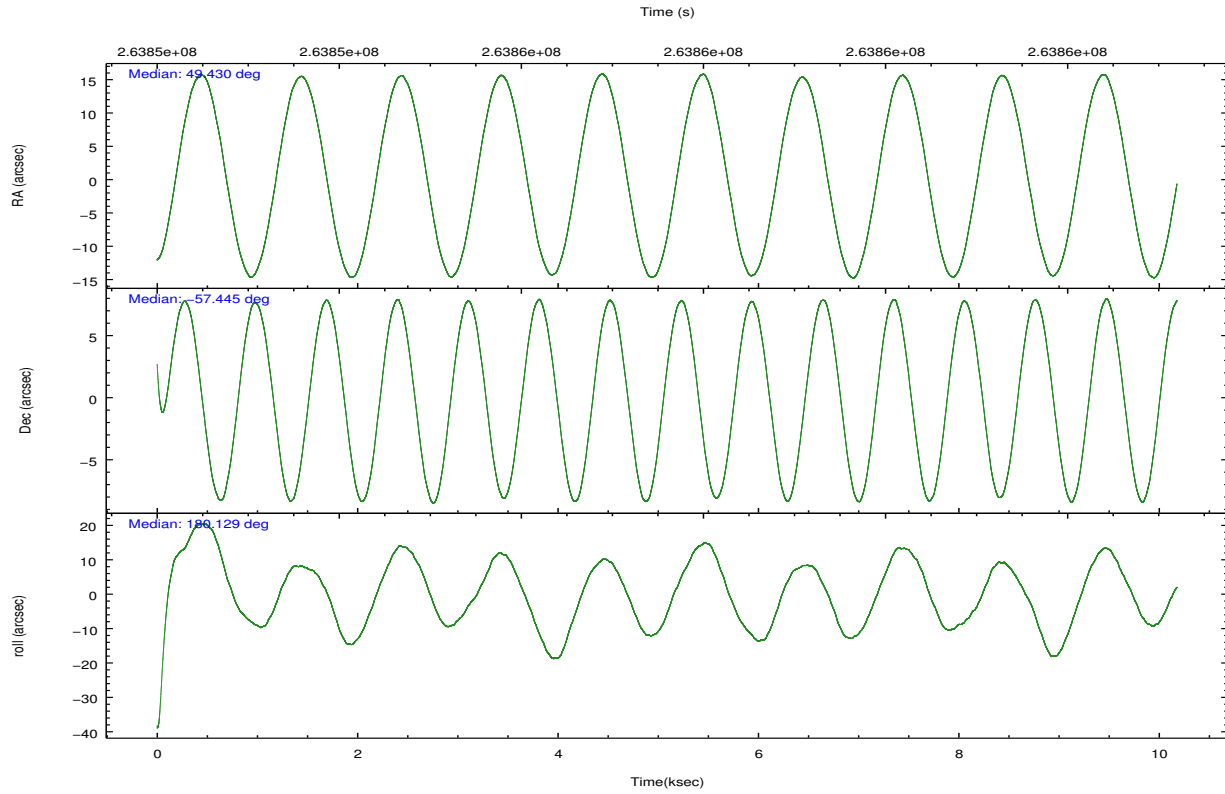
	ccd 2	ccd 3	ccd 5	ccd 6	ccd 7	ccd 8		ccd 2	ccd 3	ccd 5	ccd 6	ccd 7	ccd 8
level 1 events	102426	100713	143025	100227	131361	124550	grade 0 events	13027	12881	6355	11610	5656	16035
rejected events	80838	79135	73324	79081	70446	88905		12%	12%	4%	11%	4%	12%
rejected %	78%	78%	51%	78%	53%	71%	grade 1 events	115	118	230	71	111	121
								0%	0%	0%	0%	0%	0%
							grade 2 events	3416	3158	21157	3821	11724	6832
								3%	3%	14%	3%	8%	5%
							grade 3 events	1375	1489	2720	1395	4953	2990
								1%	1%	1%	1%	3%	2%
							grade 4 events	1440	1472	2584	1318	4960	2799
								1%	1%	1%	1%	3%	2%
							grade 5 events	3467	4006	9744	4009	11372	5399
								3%	3%	6%	3%	8%	4%
							grade 6 events	2385	2638	36956	3069	33692	7061
								2%	2%	25%	3%	25%	5%
							grade 7 events	77201	74951	63279	74934	58893	83313
								75%	74%	44%	74%	44%	66%

2.2 Compared Parameters

Parameter	Planned	Actual	Parameter	Planned	Actual
Instrument	ACIS	ACIS	Obspar format version number	7	7
Detector	ACIS-235678	ACIS-235678	Obspar file type	PREDICTED	ACTUAL
Grating	NONE	NONE	Obspar update status	NONE	UPDATED
Data mode	FAINT	FAINT	Number of optional ACIS chips dropped	0	0
Observation mode	POINTING	POINTING	On-chip summing requested	N	N
[deg] Pointing RA	49.473595	49.43012564133728	Subarray requested	NONE	NONE
[deg] Pointing Dec	-57.431279	-57.44525421217669	Alternating exposures requested	N	N
[deg] Pointing Roll	180.010074	180.1300089779287	[s] Primary exposure time	0.000000	3.2
[mm] SIM focus pos	-0.684267	-0.6828225247311905			
[mm] SIM defocus	0	0.001444936568705701			
[mm] SIM translation stage pos	-190.132523	-190.1400660498719			
[mm] SIM translation stage offset	0	0.00754346686406393			
[s] Observation start time (MET)	263852688.184000	263851691.37057			
Observation start date	2006-05-12T20:23:43	2006-05-12T20:08:11			
[s] Observation end time (MET)	263862688.184000	263863551.64612			
Observation end date	2006-05-12T23:10:23	2006-05-12T23:25:51			
Read mode	TIMED	TIMED			

2.3 Aspect



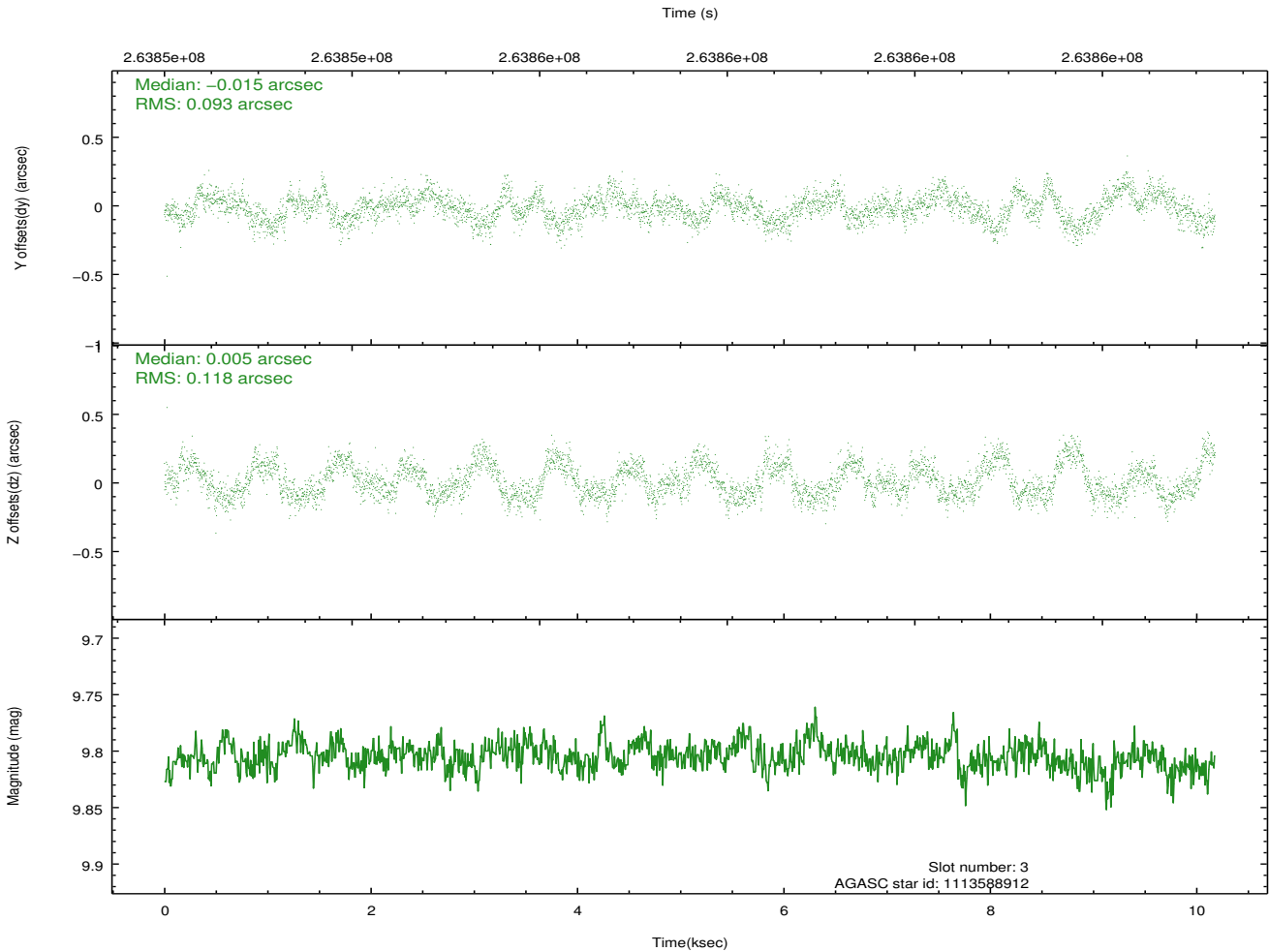
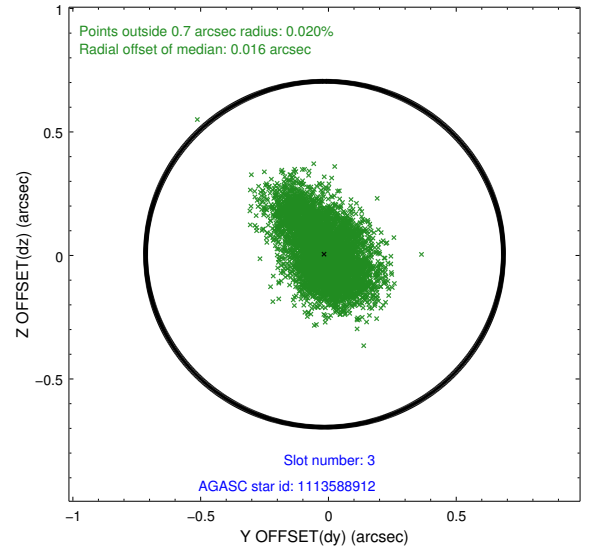
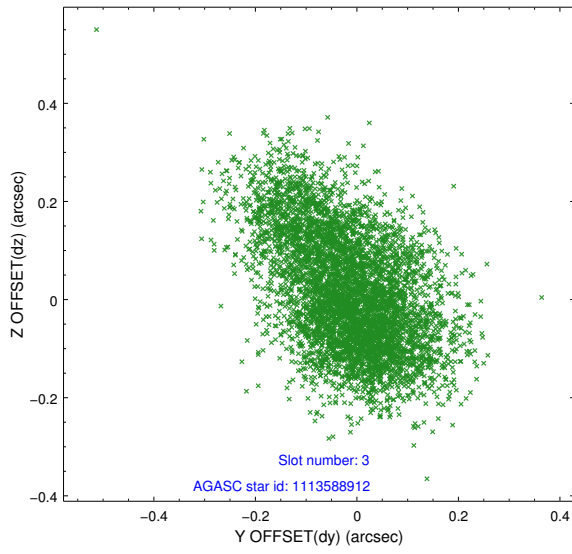


Slot Statistics

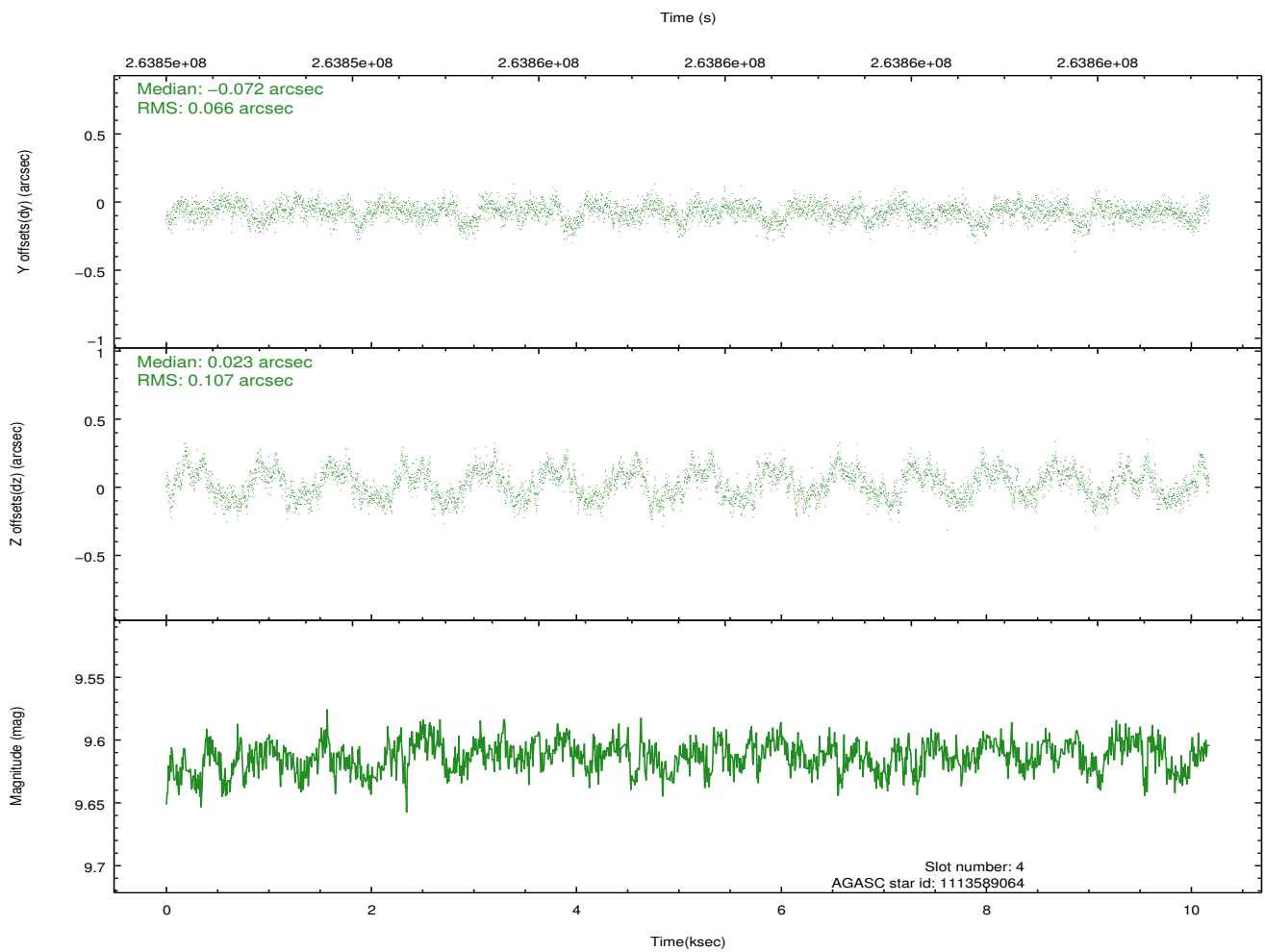
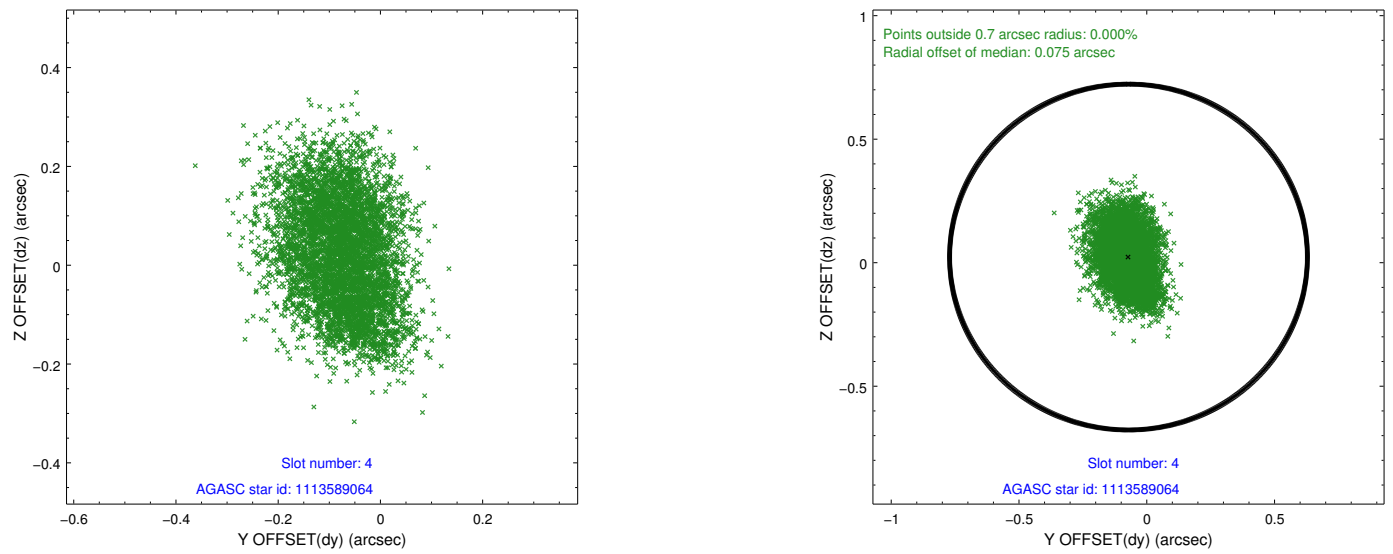
slot	status	id	mag	n_pts	med_dy	med_dz	dr1	dr2	ra	dec	mean_y	mean_z
0	FID	ACIS-S-2	7.10	2482	-0.088	-0.066	0.007	0.013	0.000000	0.000000	-759.51	-1731.88
1	FID	ACIS-S-4	7.21	2483	0.084	0.041	0.008	0.013	0.000000	0.000000	2153.68	176.20
2	FID	ACIS-S-6	7.35	2483	-0.024	0.033	0.009	0.015	0.000000	0.000000	403.17	814.16
3	GUIDE	1113588912	9.80	4960	-0.015	0.005	0.158	0.261	49.631793	-57.231092	-308.35	-719.82
4	GUIDE	1113589064	9.61	4966	-0.072	0.023	0.135	0.213	48.910745	-57.019579	1102.57	-1477.36
5	GUIDE	1113857176	9.55	4961	-0.044	0.034	0.219	0.316	48.260687	-57.833851	2324.96	1469.87
6	GUIDE	1113981952	9.94	4962	0.095	-0.034	0.128	0.204	50.432665	-57.793369	-1839.34	1317.54
7	GUIDE	1113982024	10.28	4961	0.069	-0.035	0.210	0.336	50.702772	-57.846532	-2355.09	1517.21

2.4 Star Slots

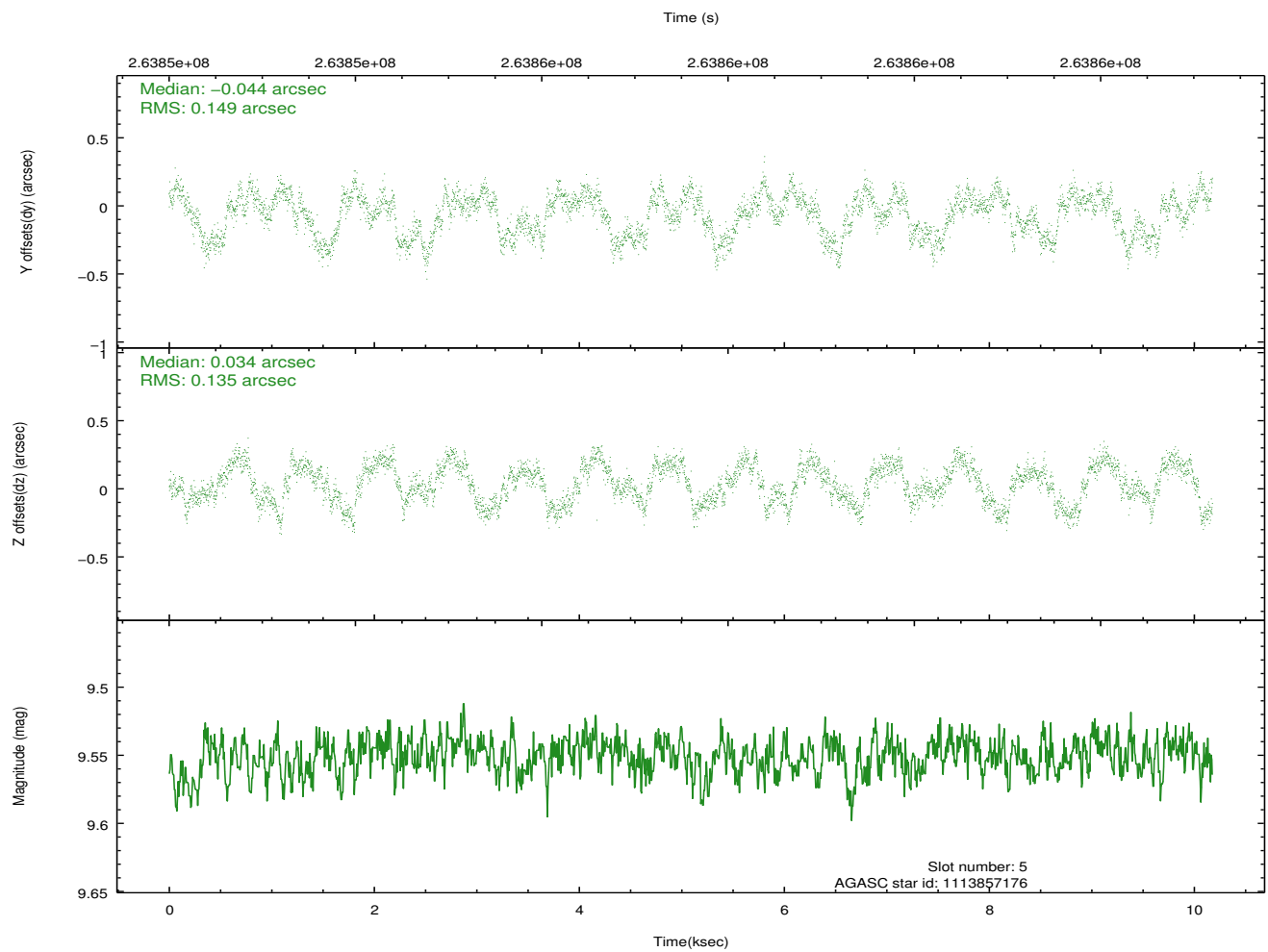
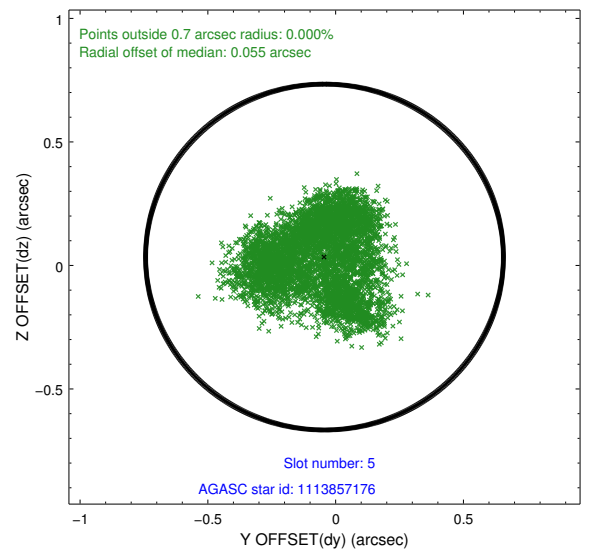
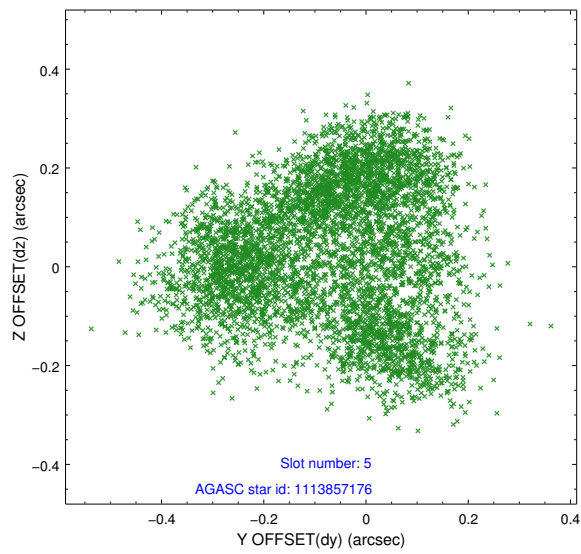
2.4.1 Slot 3



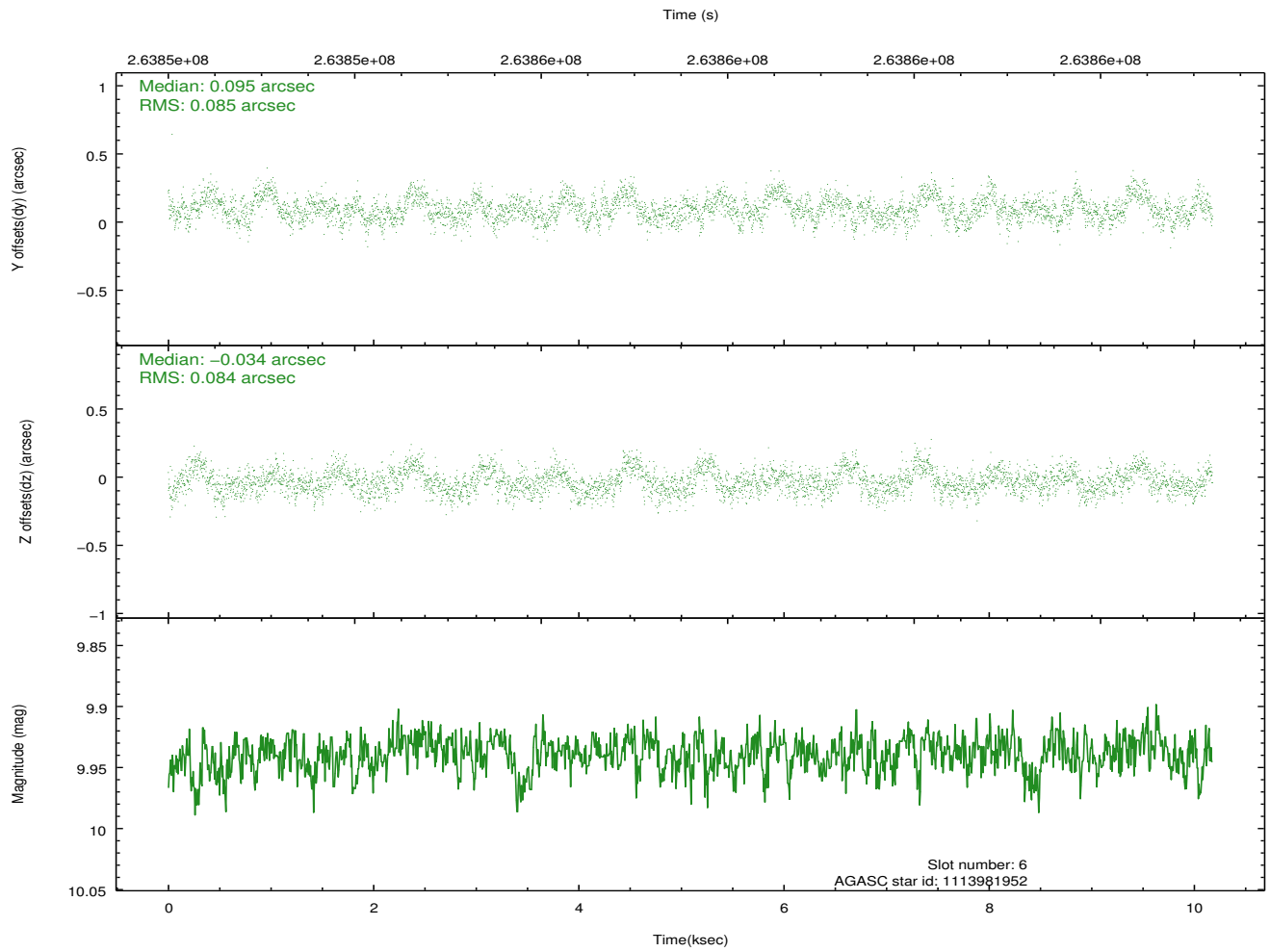
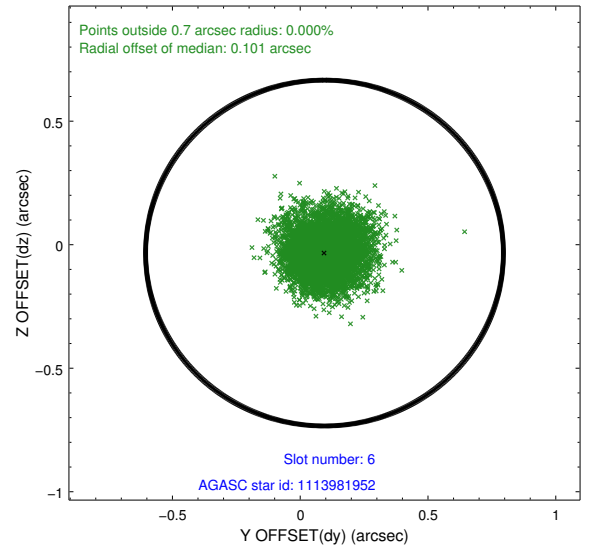
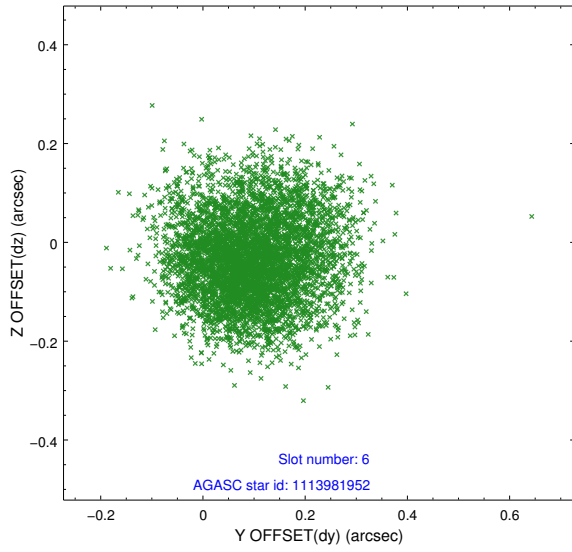
2.4.2 Slot 4



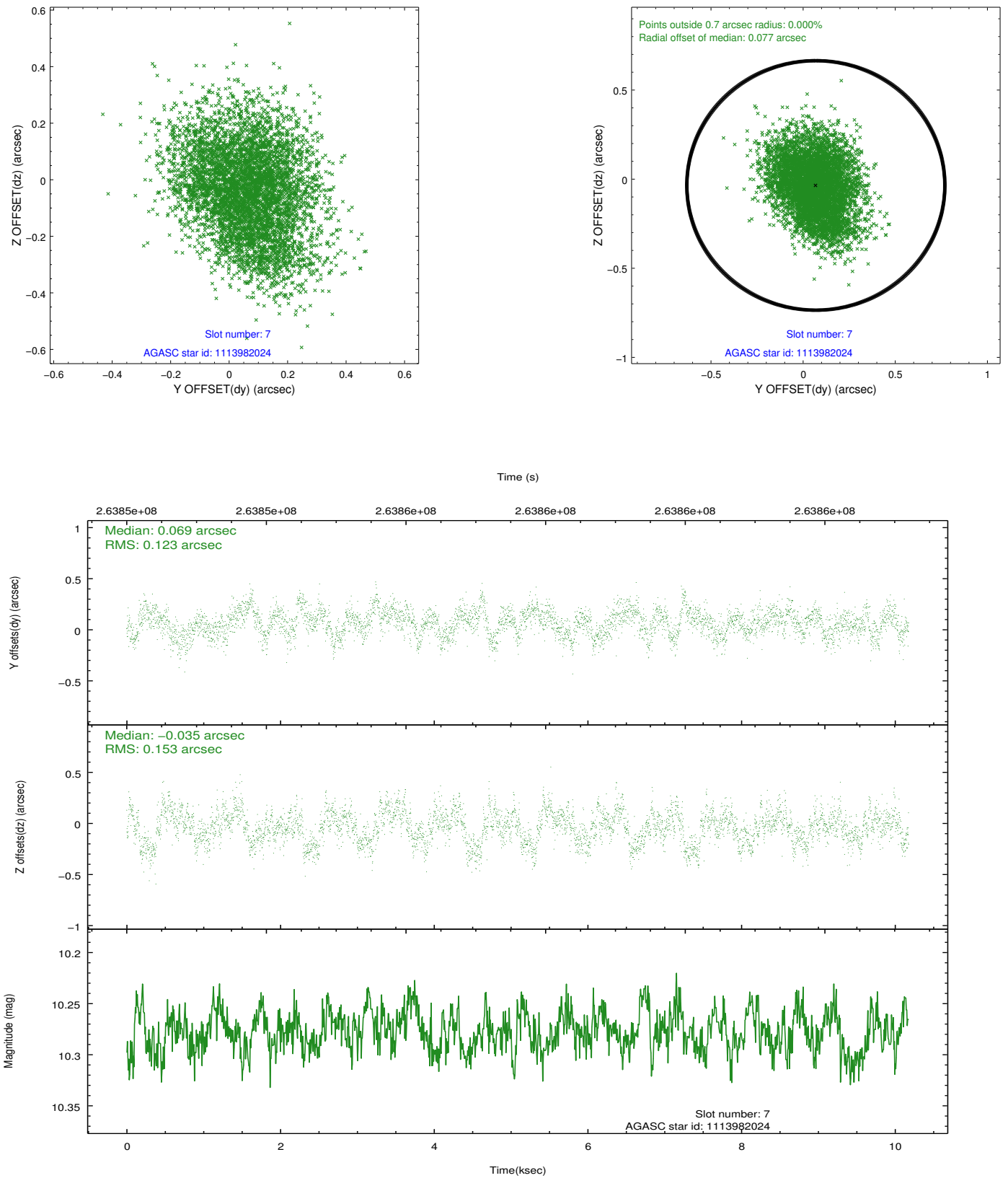
2.4.3 Slot 5



2.4.4 Slot 6

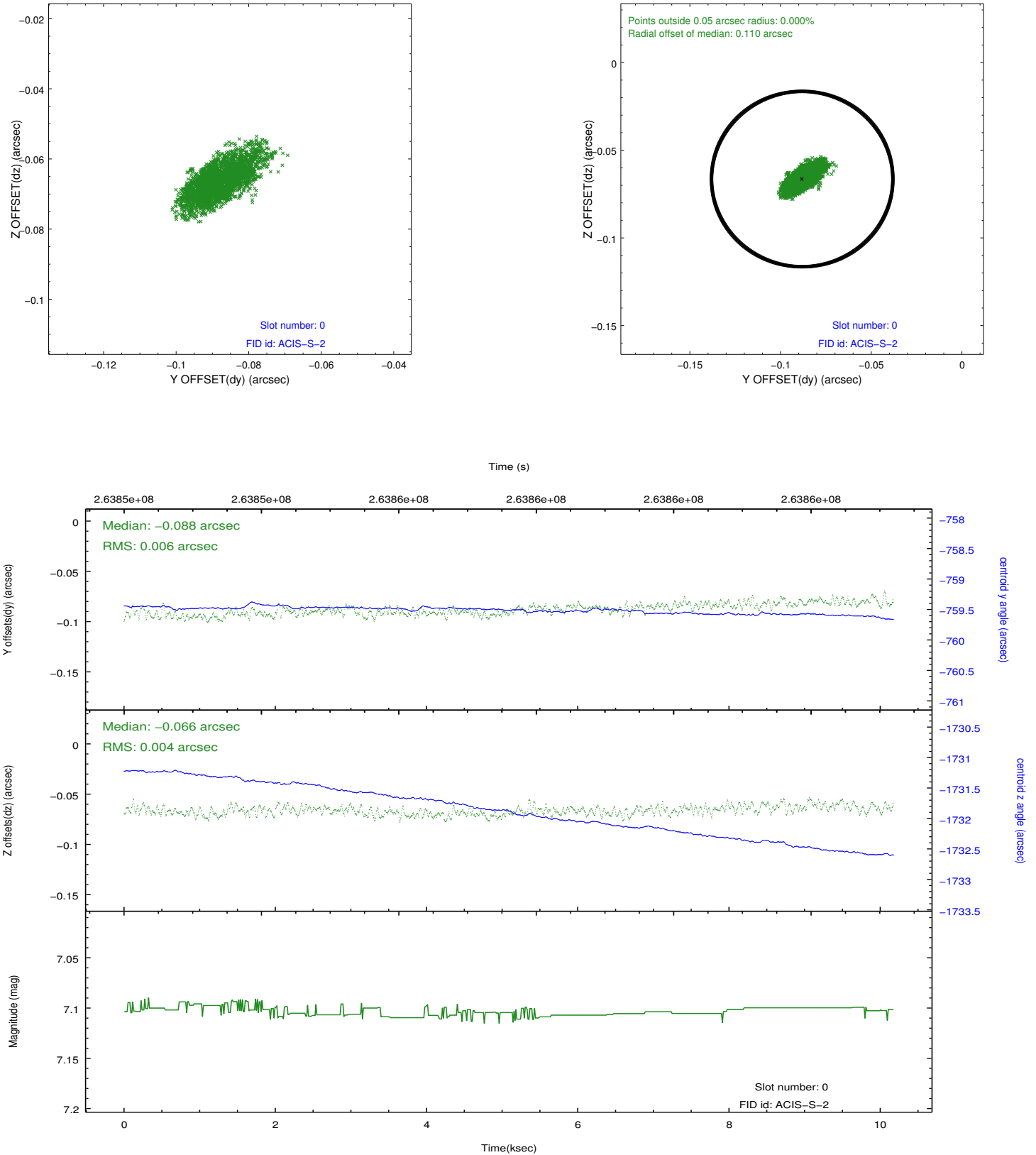


2.4.5 Slot 7

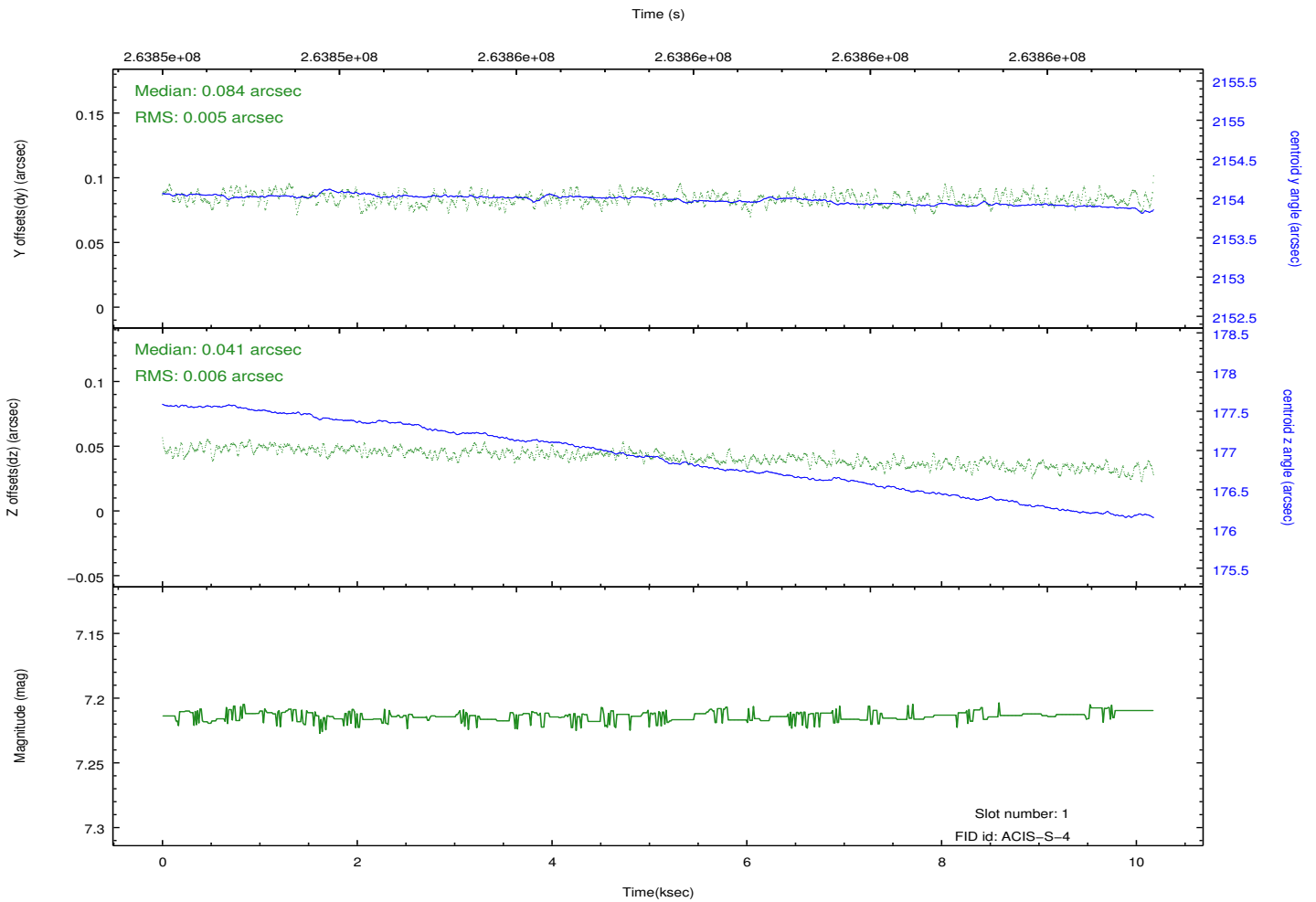
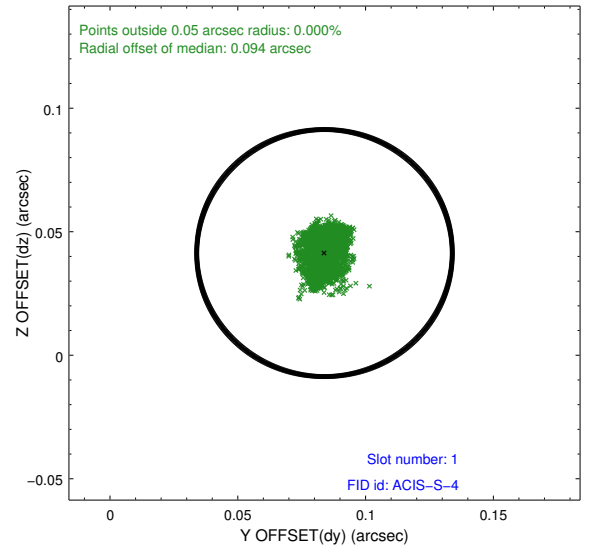
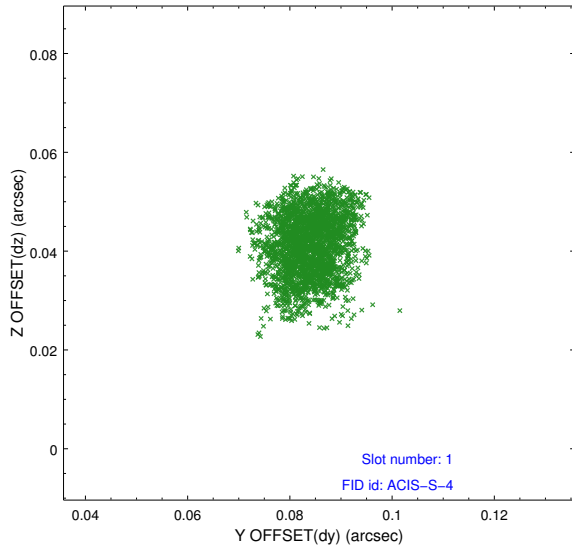


2.5 FID Slots

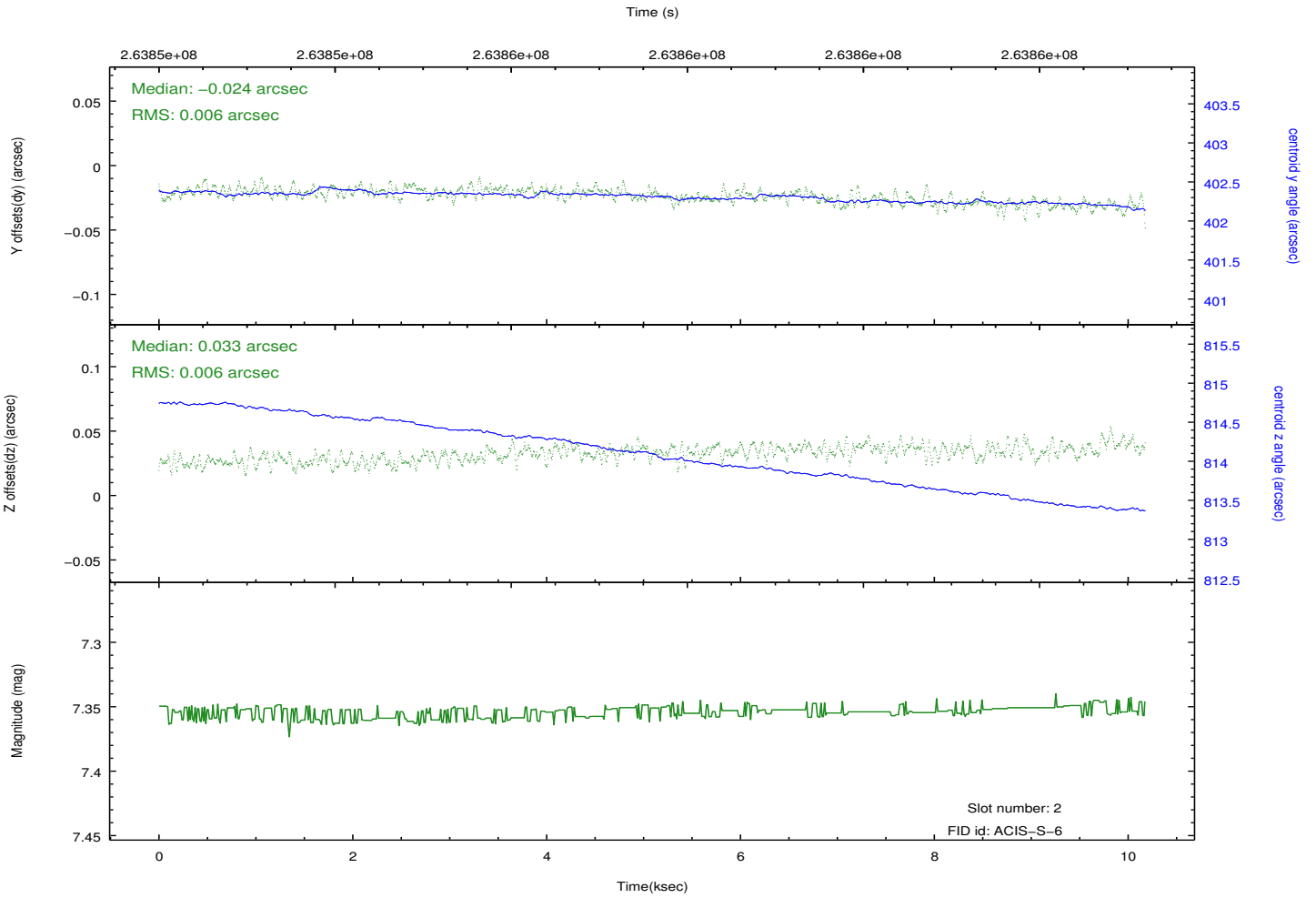
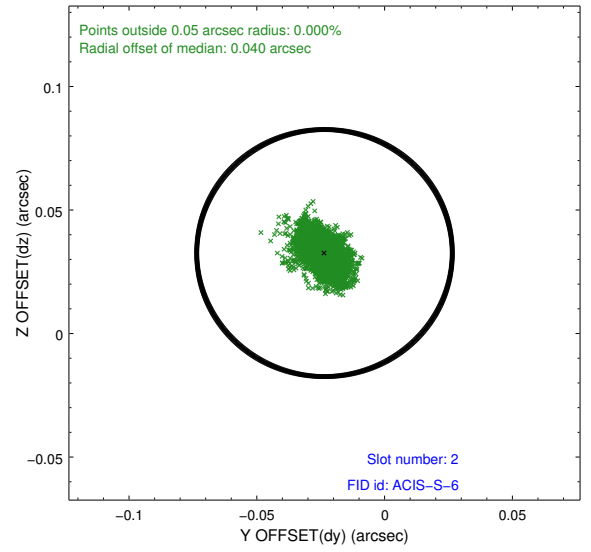
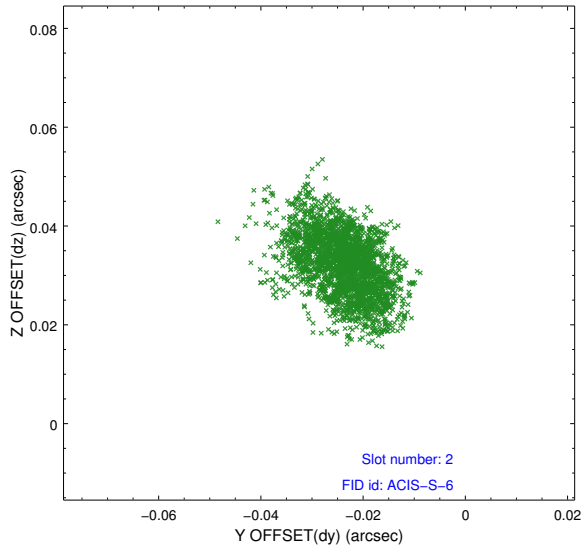
2.5.1 Slot 0



2.5.2 Slot 1



2.5.3 Slot 2



A Summary

A.1 Status

V&V Scientist	Jen Lauer
V&V Date (YYYY-MM-DD)	2012.04.03
V&V Edition	1
V&V Disposition and Status	OK
V&V Charge Time	10.0255999

A.2 Comments