

V&V Reference Report

L2 ASCDS Version : 8.4.3

Observation 6881 - L2 Version 3
Chandra X-Ray Center

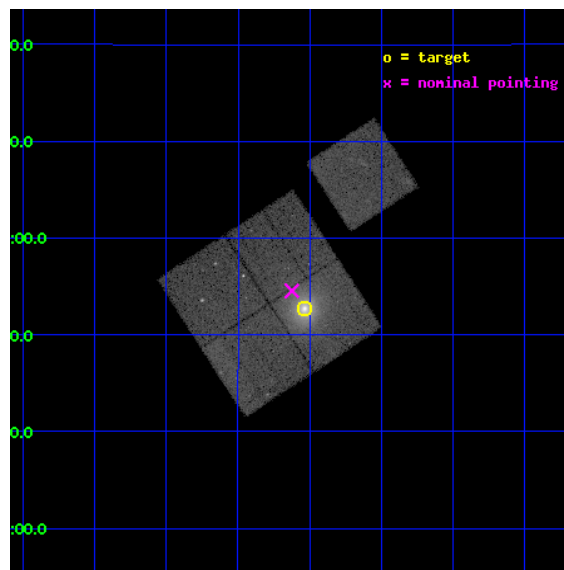
L2 Processing Date : Mar 18 2012

Contents

1	Front	2
2	OBI	3
2.1	OBI	3
2.1.1	Images	3
2.1.2	Bias	3
2.1.3	Parameters	4
2.1.4	Events	4
2.2	Compared Parameters	5
2.3	Aspect	6
2.4	Star Slots	9
2.4.1	Slot 3	9
2.4.2	Slot 5	10
2.4.3	Slot 6	11
2.4.4	Slot 7	12
2.5	FID Slots	13
2.5.1	Slot 0	13
2.5.2	Slot 1	14
2.5.3	Slot 2	15
A	Summary	16
A.1	Status	16
A.2	Comments	16

1 Front

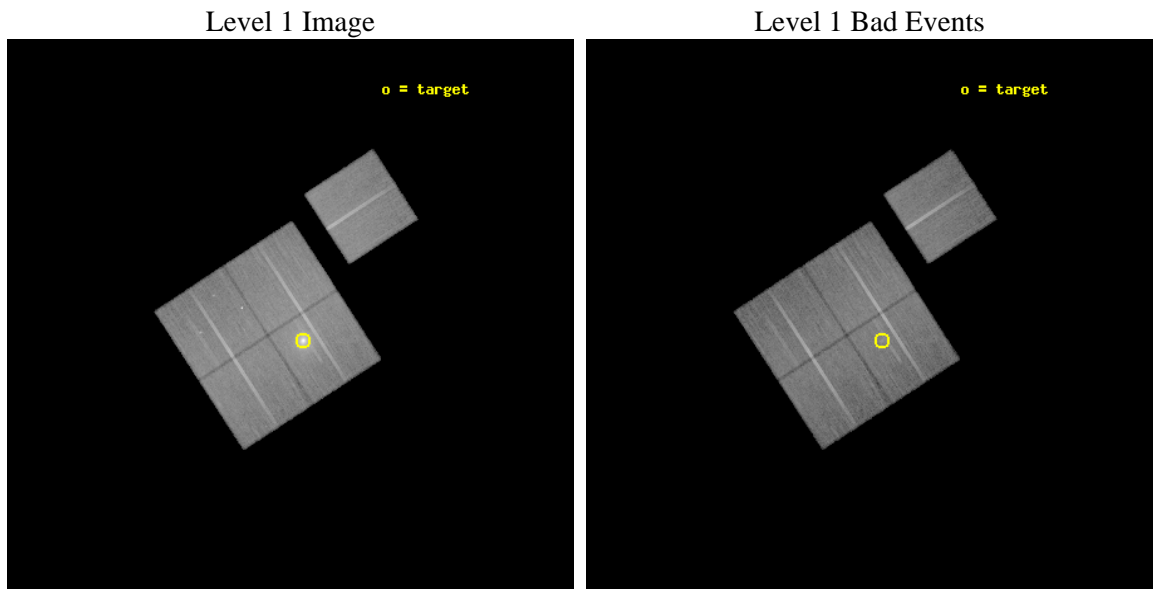
seq_num	701298	Sequence number
obs_id	6881	Observation id
title	CHARACTERIZING THE NATURE OF OPTICAL DROP-OUTS AND $z \geq 6-10$ GALAXIES BEHIND THE LENSING CLUSTER ABELL 1835	Proposal title
observer	Dr. Michael Wise	Principal investigator
object	Abell 1835	Source name
dtcycle	0	
cycle	P	events from which exps? Prim/Second/Both
ra_targ	210.25875	Observer's specified target RA [deg]
dec_targ	2.878667	Observer's specified target Dec [deg]
ra_nom	210.28092883183	Nominal RA [deg]
dec_nom	2.9091272666503	Nominal Dec [deg]
roll_nom	56.922623612807	Nominal Roll [deg]
revision	3	Processing version of data
ontime	36761.818516344	Sum of GTIs [s]
livetime	36281.498293771	Livetime [s]
ontime0	36771.11829707	Sum of GTIs [s]
ontime1	36768.018346965	Sum of GTIs [s]
ontime2	36768.059406817	Sum of GTIs [s]
ontime3	36761.818516344	Sum of GTIs [s]
ontime6	36774.218217313	Sum of GTIs [s]
l2events	177692	Number of level 2 events



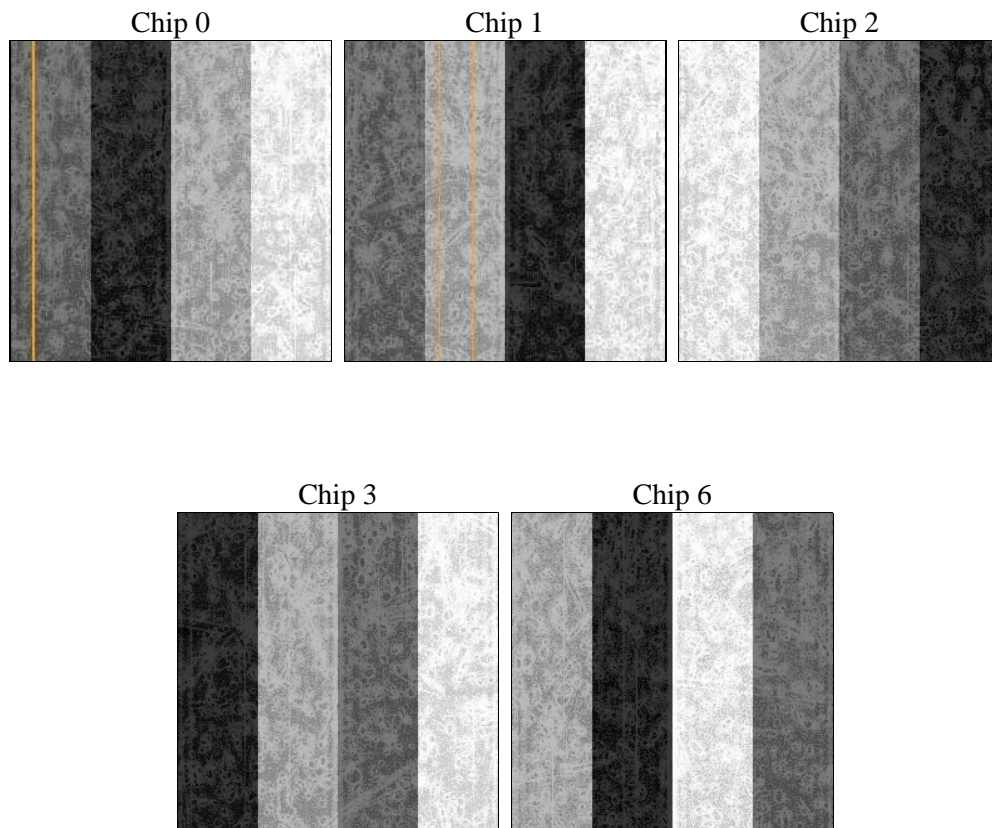
2 OBI

2.1 OBI

2.1.1 Images



2.1.2 Bias



2.1.3 Parameters

obi_num	0	Obi number	sched_exp_time	37000.000000	[s] Scheduled observation exposure time
ascdsver	8.4.3.1	Processing system revision	ontime	36761.818516344	Sum of GTIs [s]
caldbver	4.4.8	 	ontime0	36771.11829707	Sum of GTIs [s]
date	2012-03-18T20:04:38	Date and time of file creation	ontime1	36768.018346965	Sum of GTIs [s]
revision	3	Processing version of data	ontime2	36768.059406817	Sum of GTIs [s]
			ontime3	36761.818516344	Sum of GTIs [s]
			ontime6	36774.218217313	Sum of GTIs [s]
			l1events	1311723	Number of level 1 events

2.1.4 Events

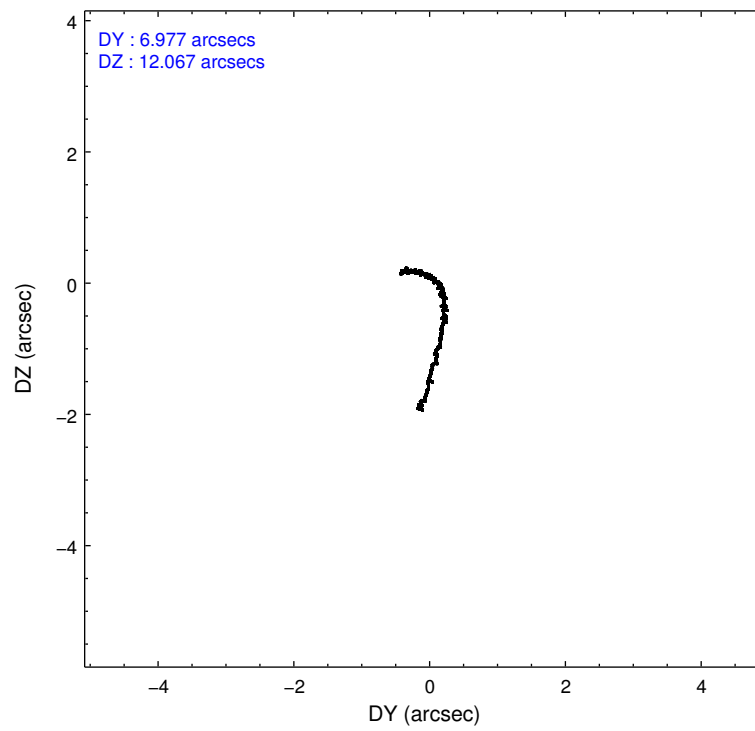
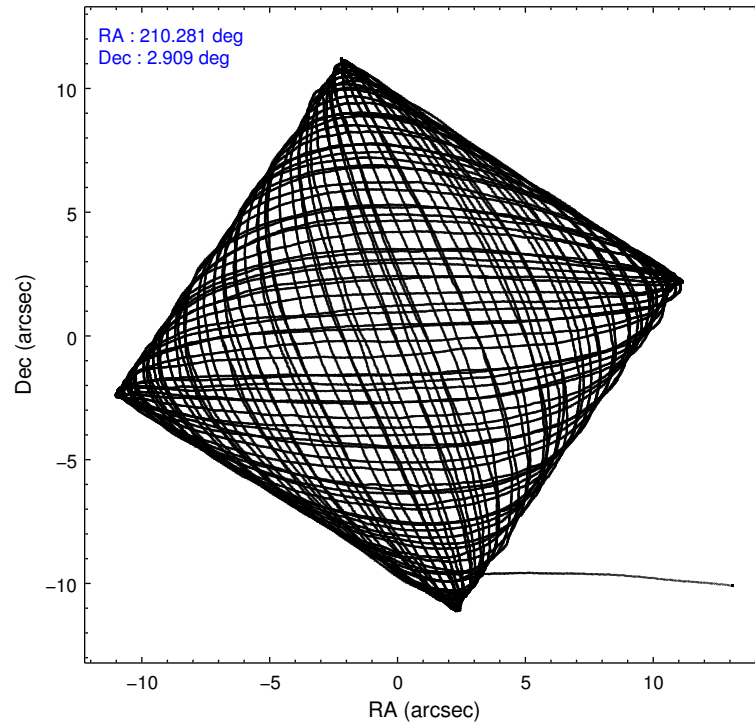
	ccd 0	ccd 1	ccd 2	ccd 3	ccd 6
level 1 events	239364	234732	271719	316965	248943
rejected events	211625	205079	245728	224864	222995
rejected %	88%	87%	90%	70%	89%

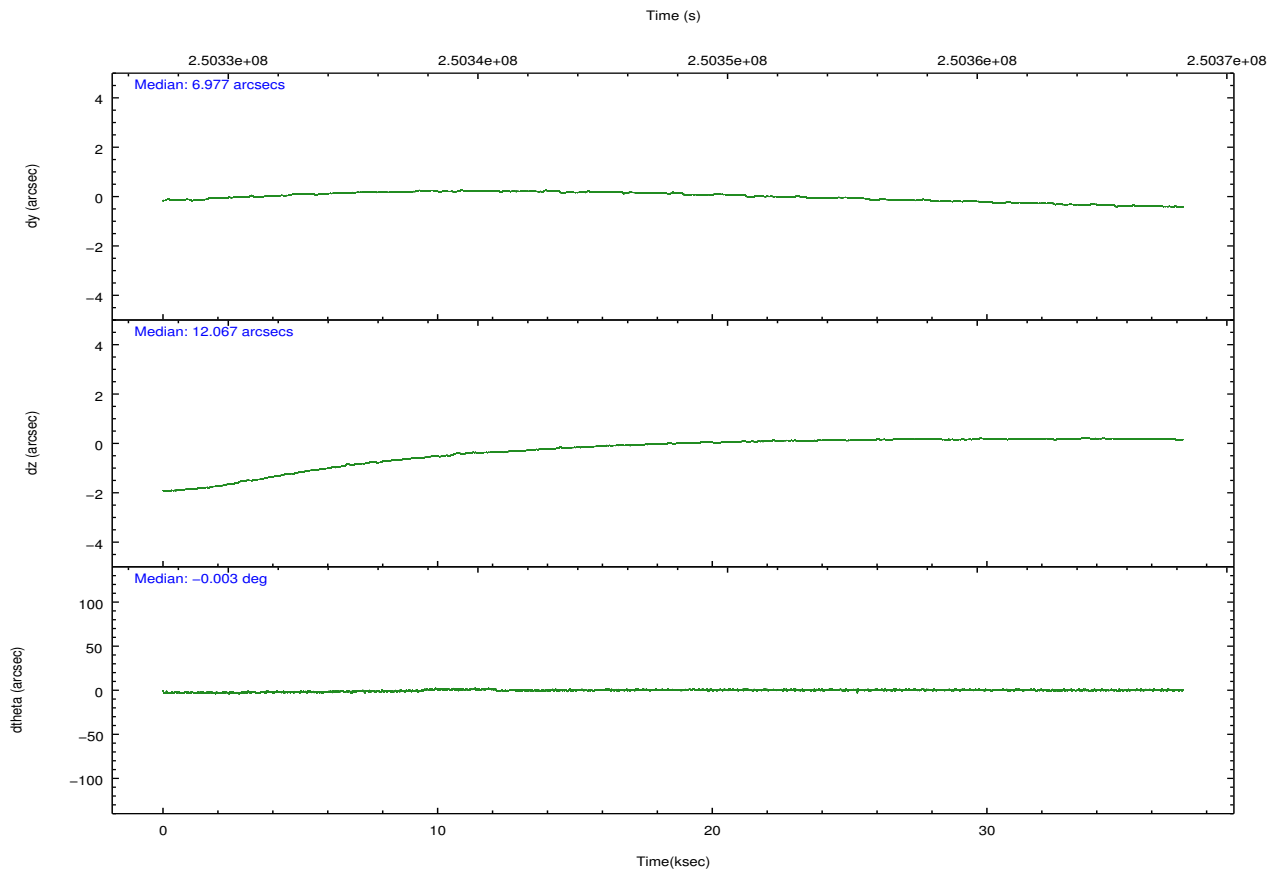
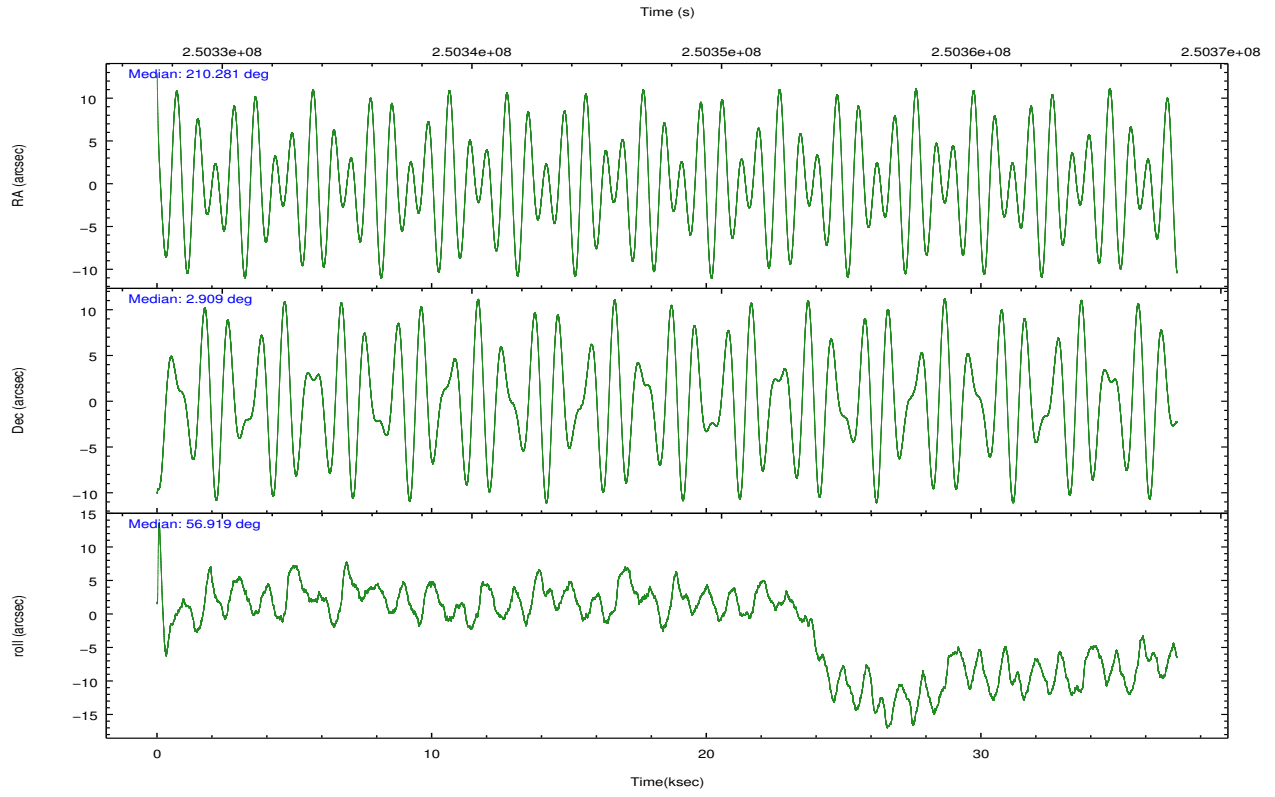
	ccd 0	ccd 1	ccd 2	ccd 3	ccd 6
grade 0 events	11151	11481	10103	64818	9380
	4%	4%	3%	20%	3%
grade 1 events	135	123	160	539	106
	0%	0%	0%	0%	0%
grade 2 events	6207	6322	5947	11757	5606
	2%	2%	2%	3%	2%
grade 3 events	2842	3119	2703	4639	2863
	1%	1%	0%	1%	1%
grade 4 events	2722	3146	2775	4639	2822
	1%	1%	1%	1%	1%
grade 5 events	8527	9681	8271	10266	9846
	3%	4%	3%	3%	3%
grade 6 events	4818	5585	4464	6256	5278
	2%	2%	1%	1%	2%
grade 7 events	202962	195275	237296	214051	213042
	84%	83%	87%	67%	85%

2.2 Compared Parameters

Parameter	Planned	Actual	Parameter	Planned	Actual
Instrument	ACIS	ACIS	Obspar format version number	7	7
Detector	ACIS-01236	ACIS-01236	Obspar file type	PREDICTED	ACTUAL
Grating	NONE	NONE	Obspar update status	NONE	UPDATED
Data mode	VFAINT	VFAINT	Number of optional ACIS chips dropped	0	0
Observation mode	POINTING	POINTING	On-chip summing requested	N	N
[deg] Pointing RA	210.279561	210.2809288318287	Subarray requested	NONE	NONE
[deg] Pointing Dec	2.881774	2.909127266650253	Alternating exposures requested	N	N
[deg] Pointing Roll	56.714014	56.92262361280722	[s] Primary exposure time	0.000000	3.1
[mm] SIM focus pos	-0.782348	-0.7809083437167272			
[mm] SIM defocus	0	0.001439871863259334			
[mm] SIM translation stage pos	-227.592463	-227.5933067819097			
[mm] SIM translation stage offset	-6	-5.999146221020027			
[s] Observation start time (MET)	250329385.184000	250328219.47975			
Observation start date	2005-12-07T07:55:21	2005-12-07T07:36:59			
[s] Observation end time (MET)	250366385.184000	250366546.79403			
Observation end date	2005-12-07T18:12:01	2005-12-07T18:15:46			
Read mode	TIMED	TIMED			

2.3 Aspect



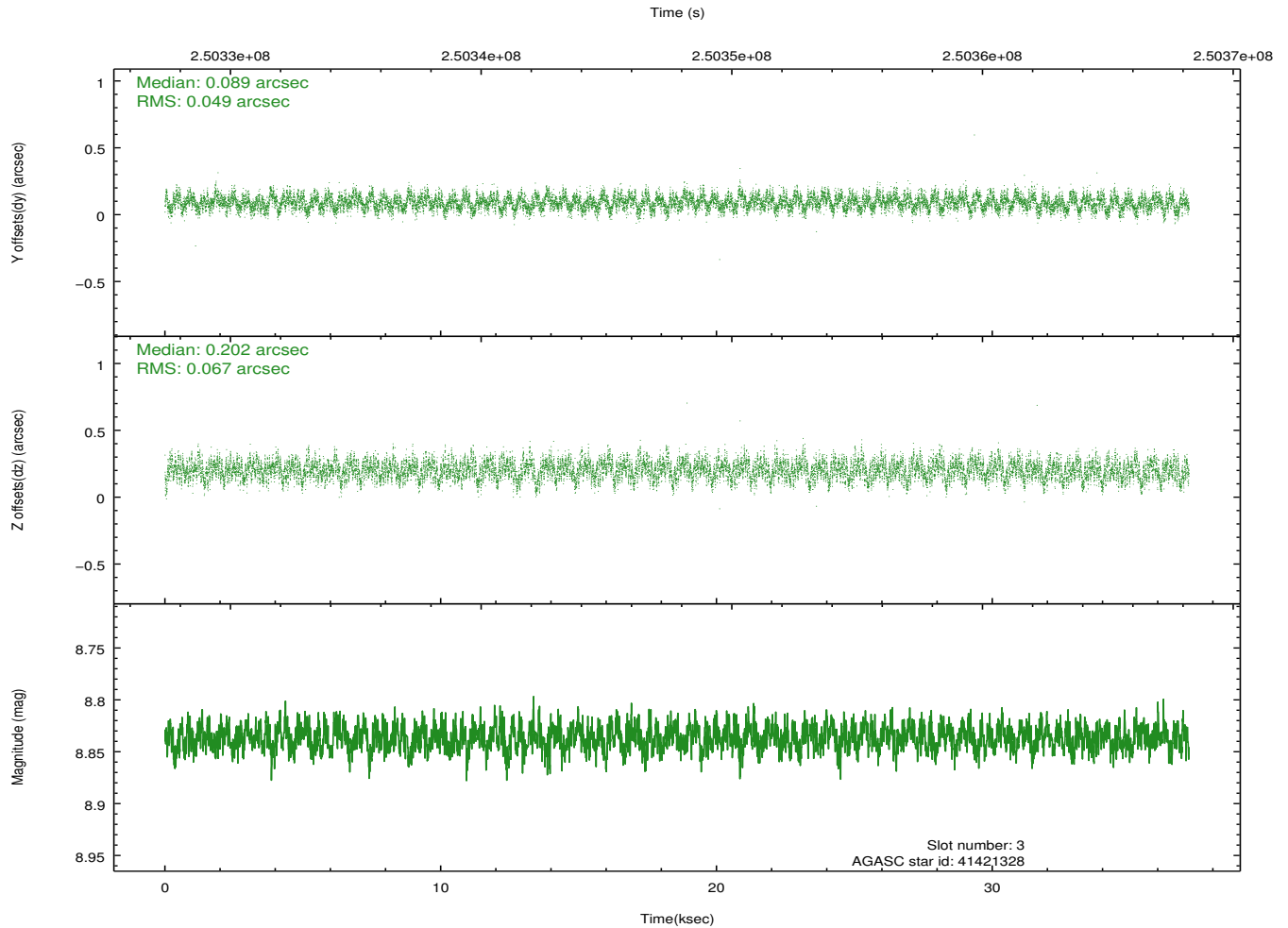
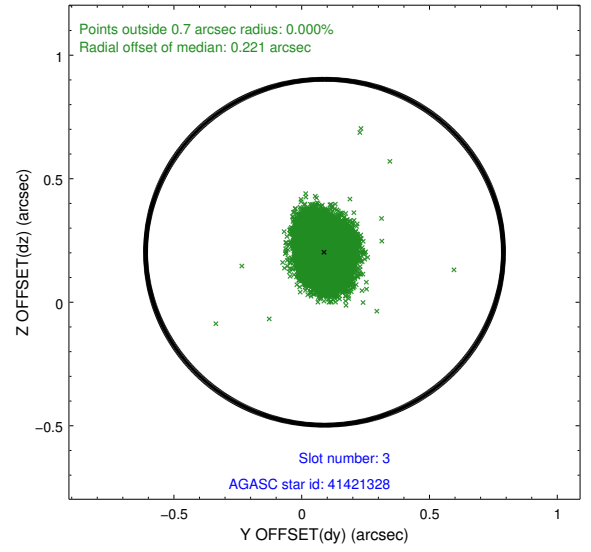
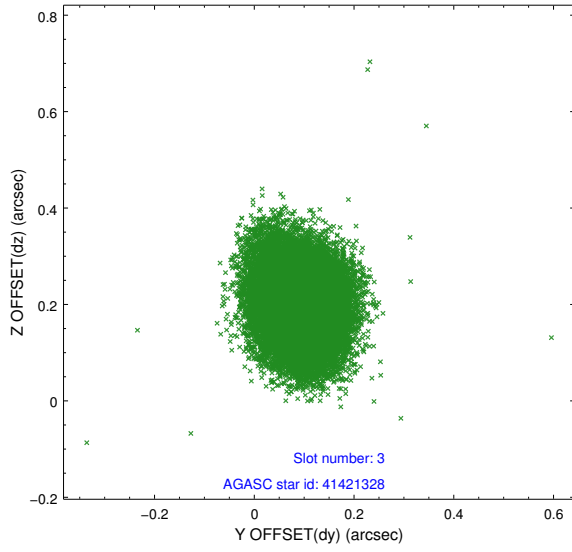


Slot Statistics

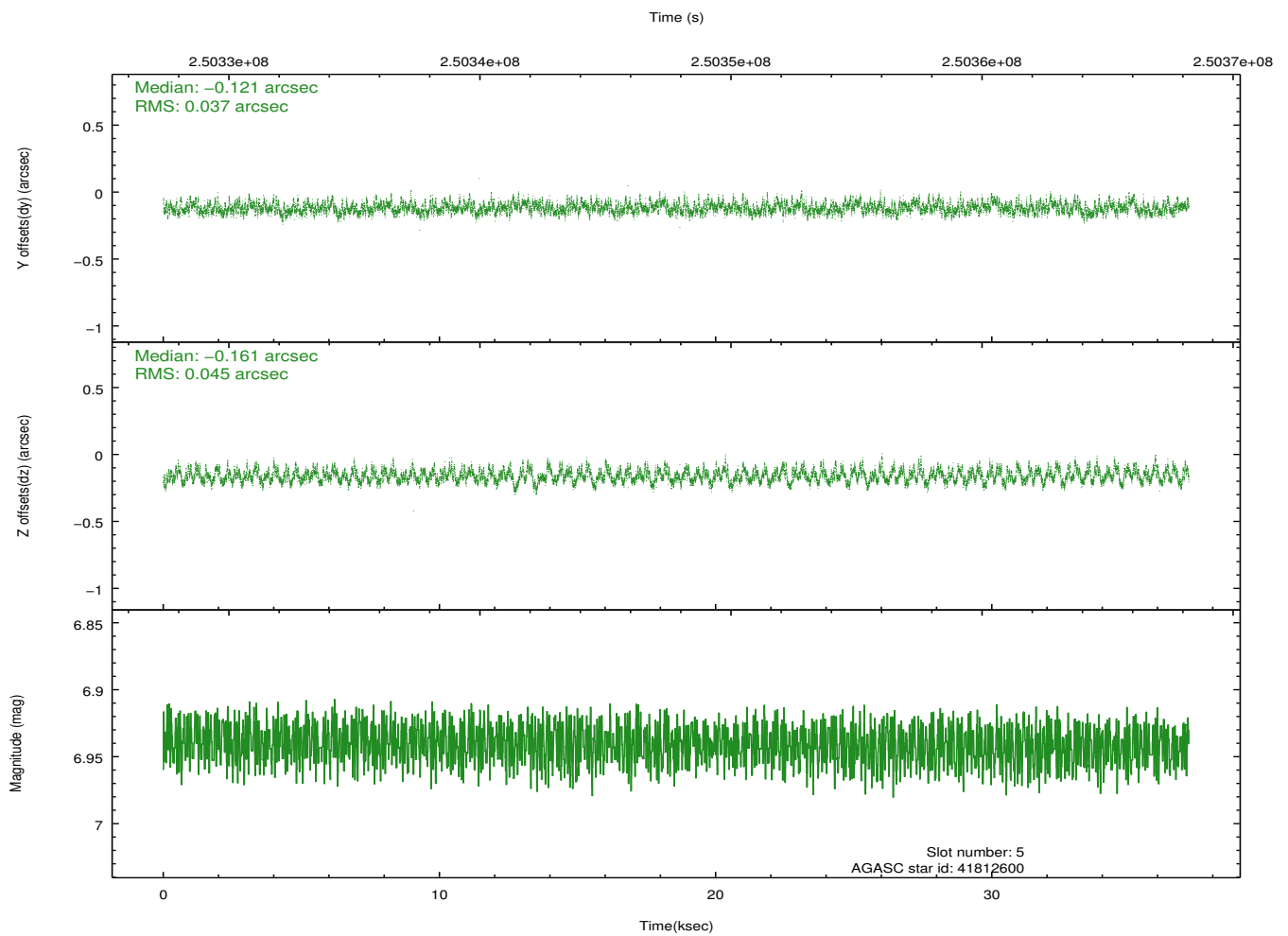
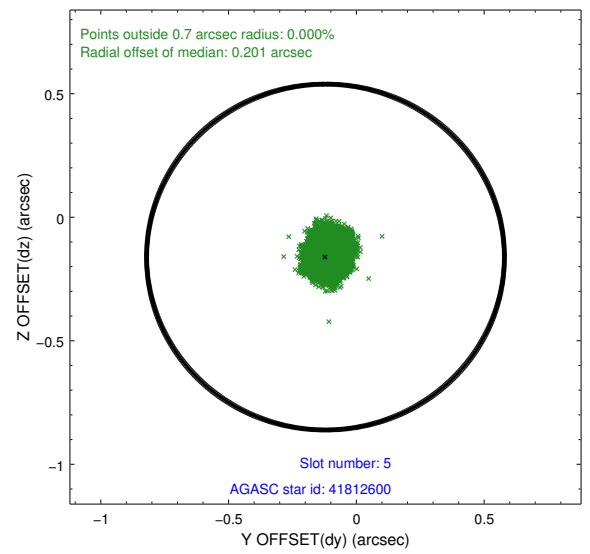
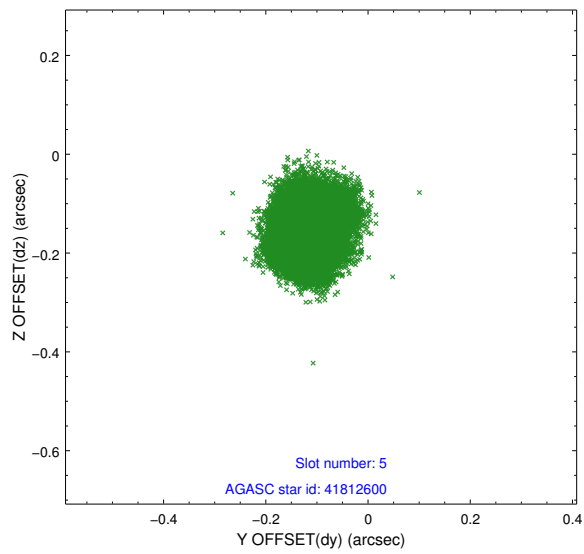
slot	status	id	mag	n_pts	med_dy	med_dz	dr1	dr2	ra	dec	mean_y	mean_z
0	FID	ACIS-I-1	7.24	9056	0.073	-0.169	0.030	0.063	0.000000	0.000000	932.71	-958.55
1	FID	ACIS-I-4	7.15	9056	0.018	0.106	0.019	0.034	0.000000	0.000000	2152.33	942.27
2	FID	ACIS-I-5	7.22	9056	-0.186	0.134	0.016	0.030	0.000000	0.000000	-1815.56	939.34
3	GUIDE	41421328	8.84	18094	0.089	0.202	0.088	0.141	210.405722	2.285281	-1545.33	-1557.28
4	OMITTED		0.00	0	0.000	0.000	0.000	0.000	0.000000	0.000000	0.00	0.00
5	GUIDE	41812600	6.94	18113	-0.121	-0.161	0.063	0.099	210.084142	2.674576	-1009.13	178.05
6	GUIDE	41812672	9.21	18094	0.154	0.062	0.121	0.186	210.433277	2.688495	-278.53	-844.02
7	GUIDE	41817264	9.72	18095	-0.125	-0.108	0.105	0.172	210.440099	3.222215	1341.53	190.46

2.4 Star Slots

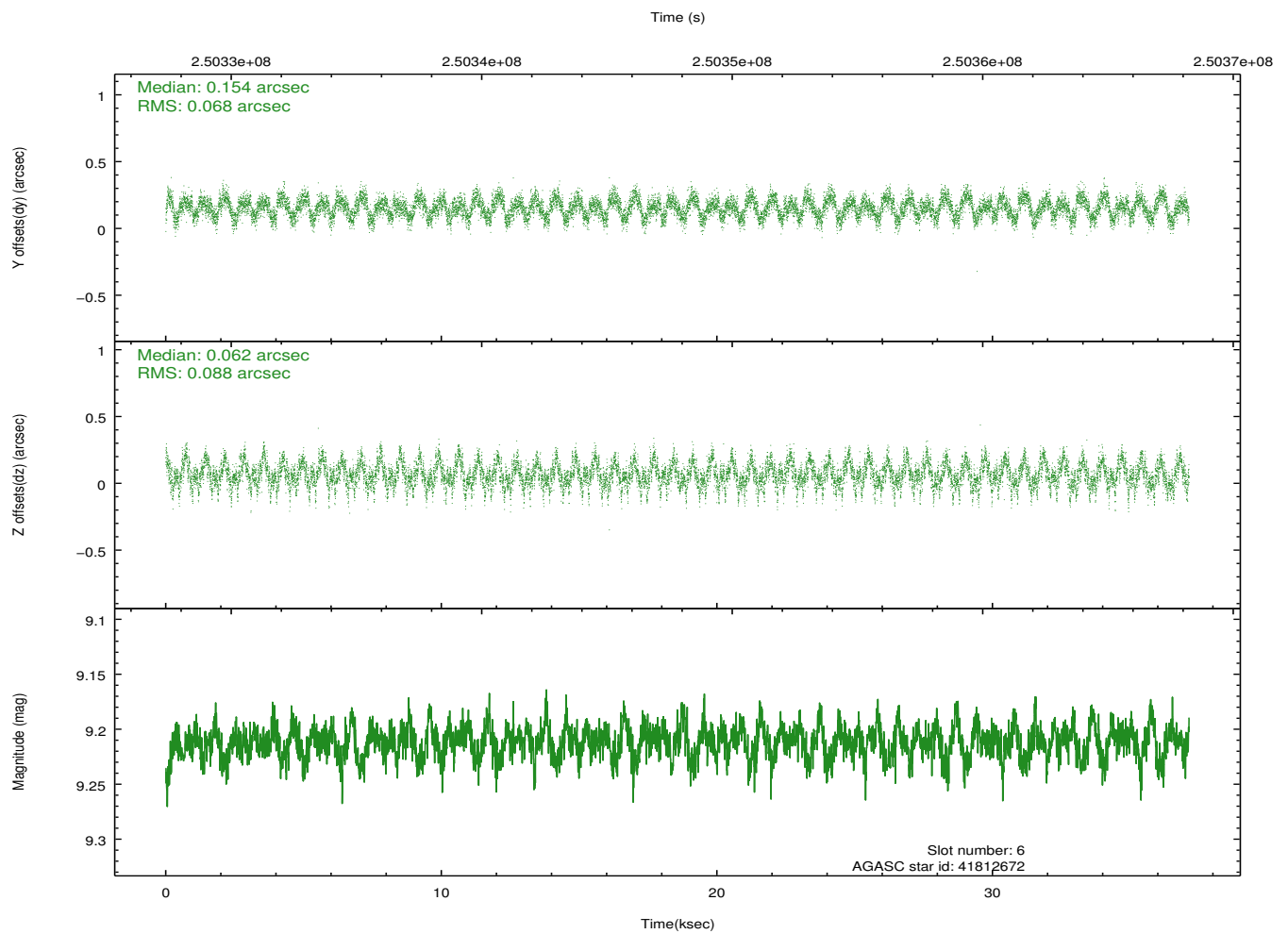
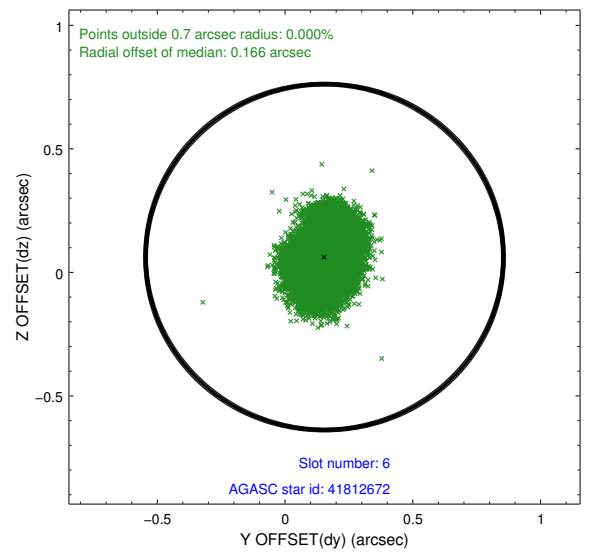
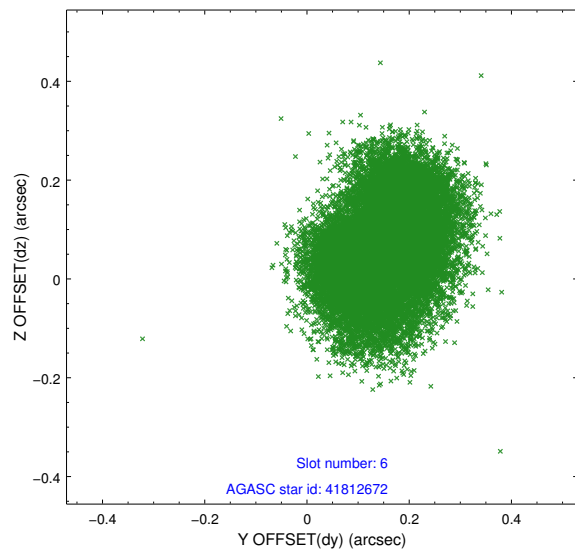
2.4.1 Slot 3



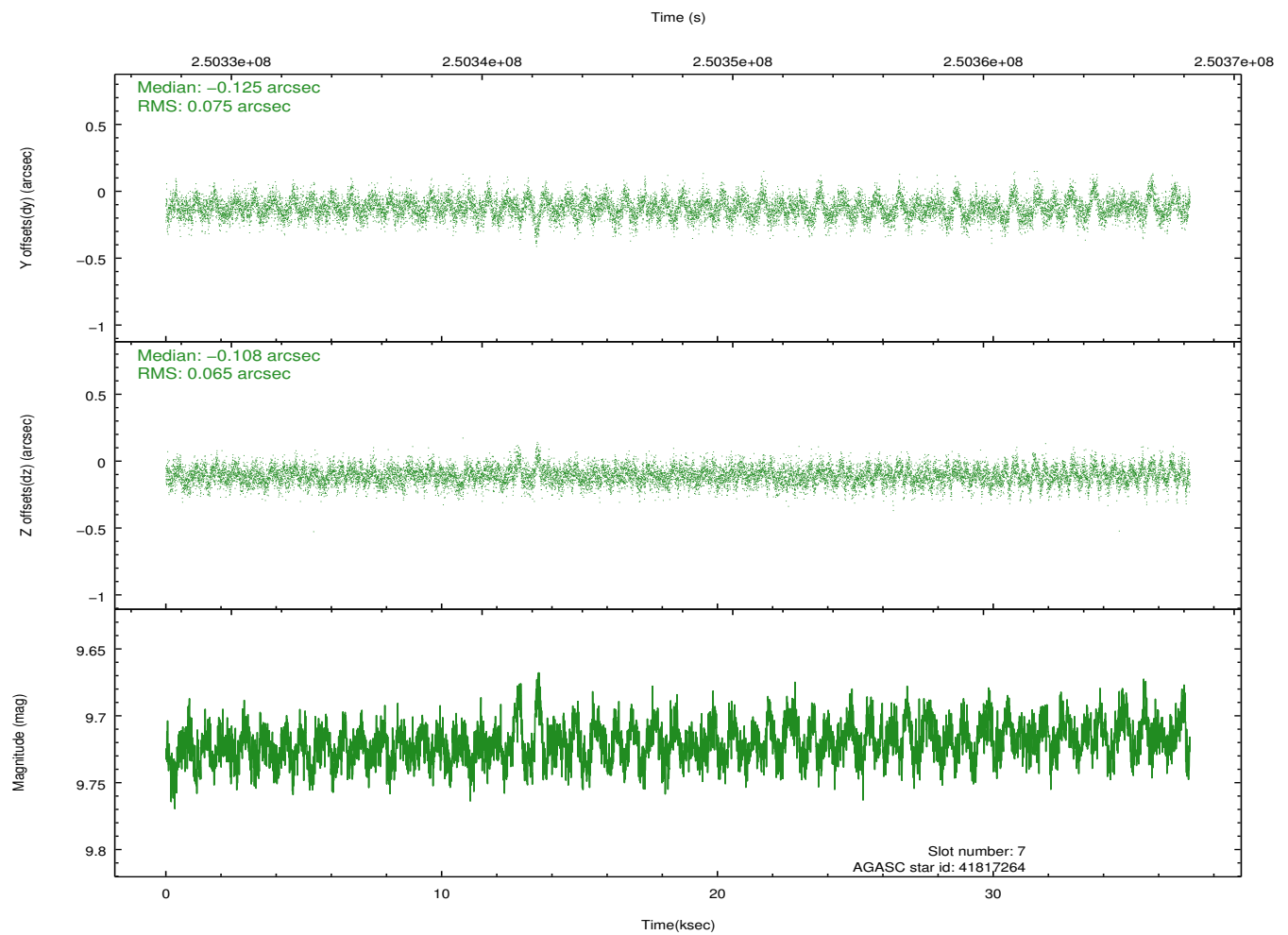
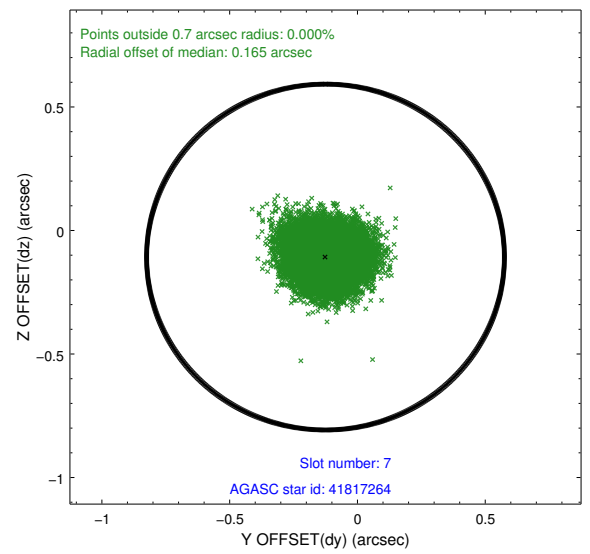
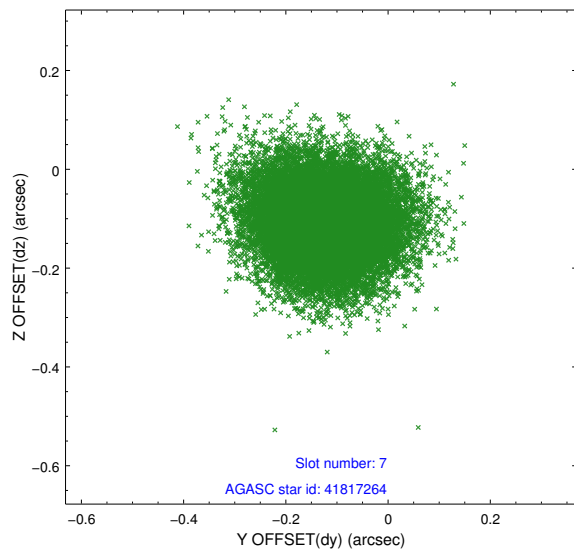
2.4.2 Slot 5



2.4.3 Slot 6

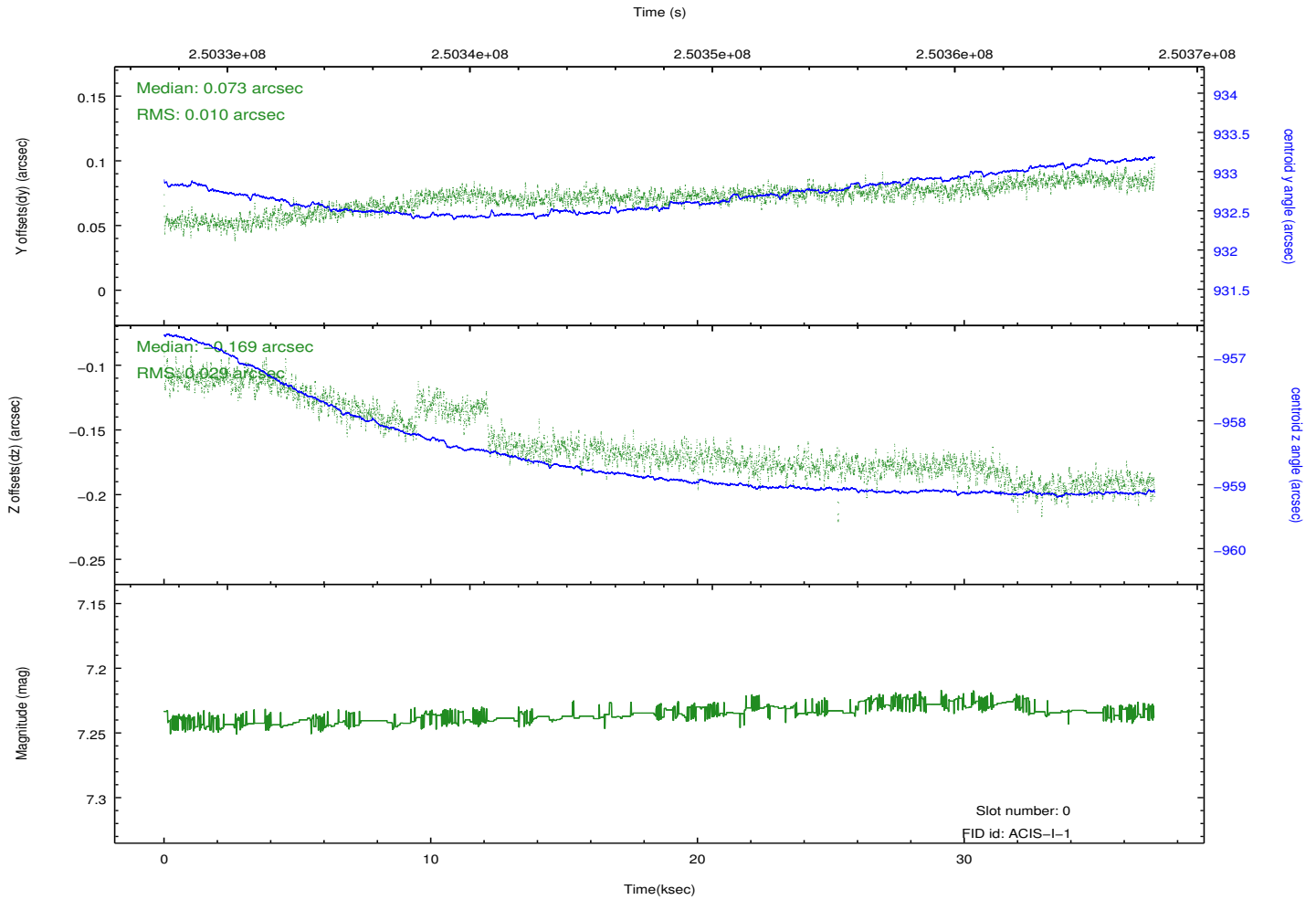
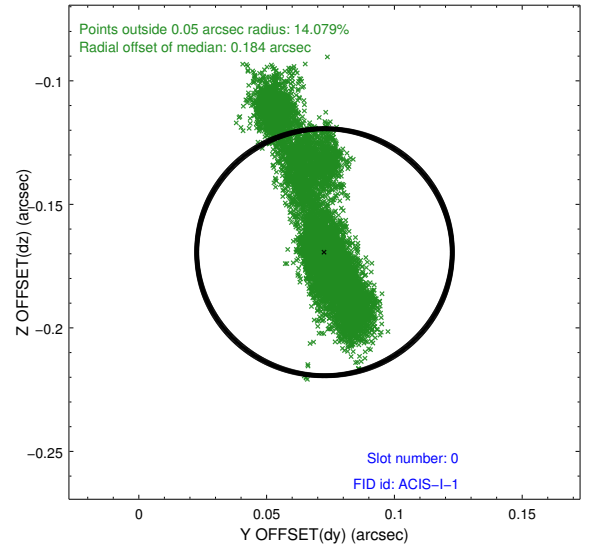
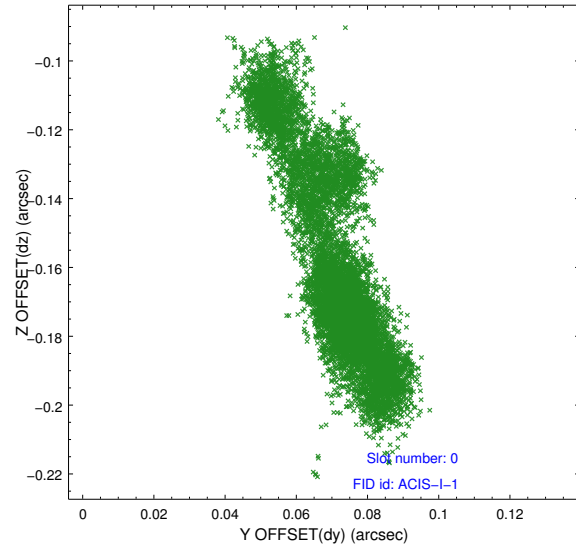


2.4.4 Slot 7

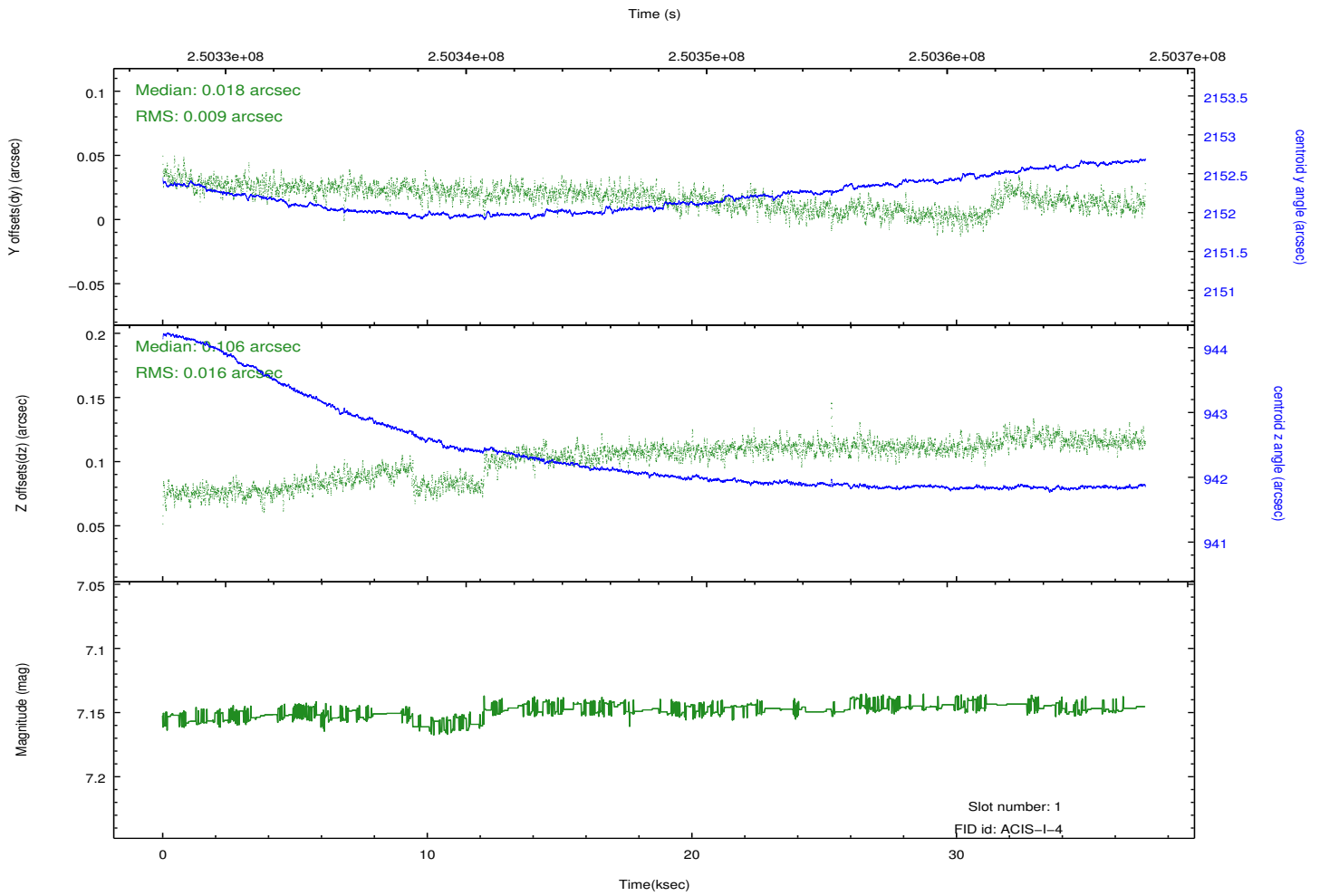
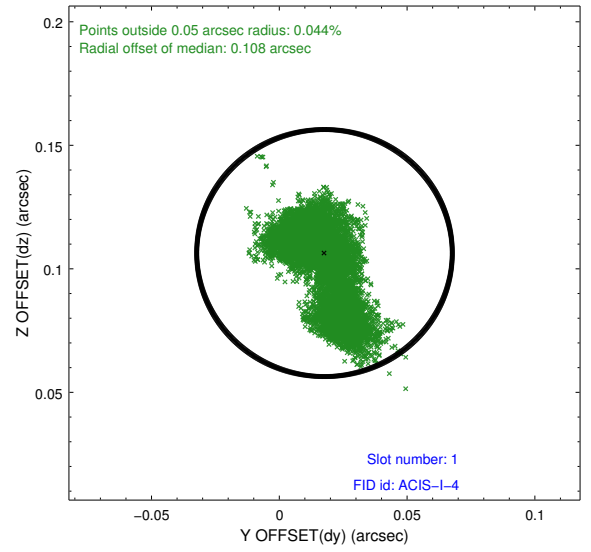
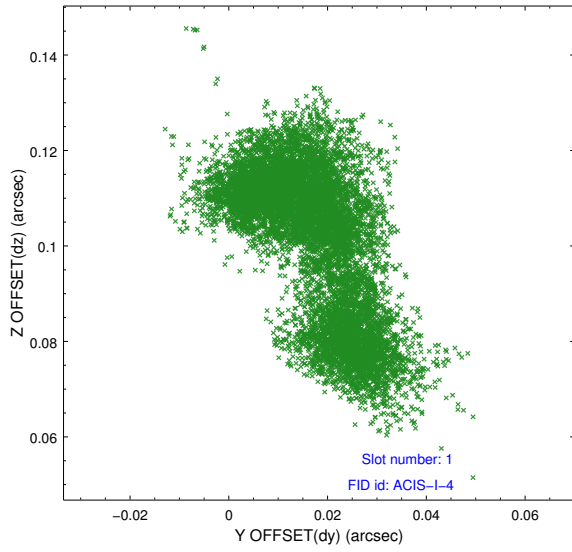


2.5 FID Slots

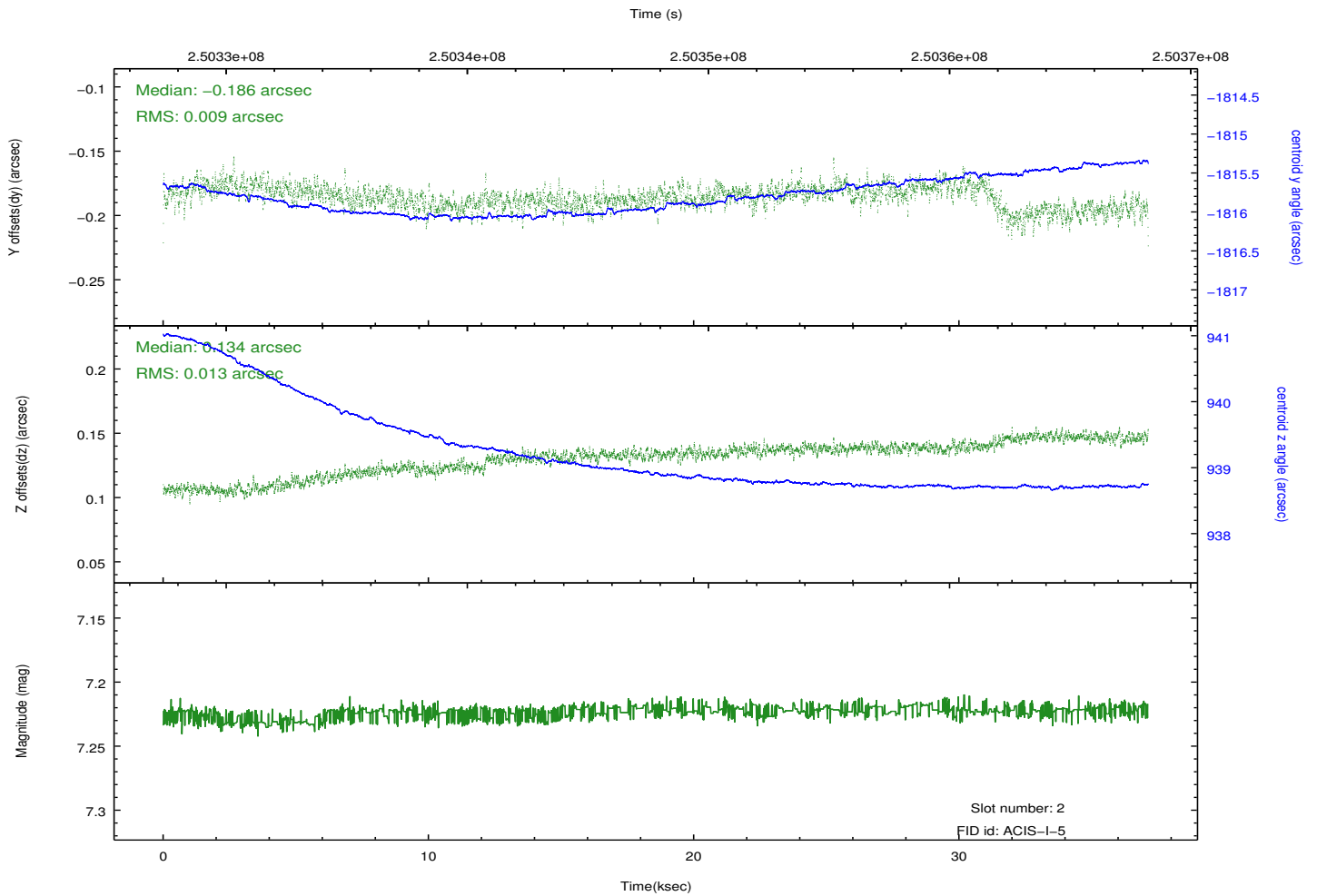
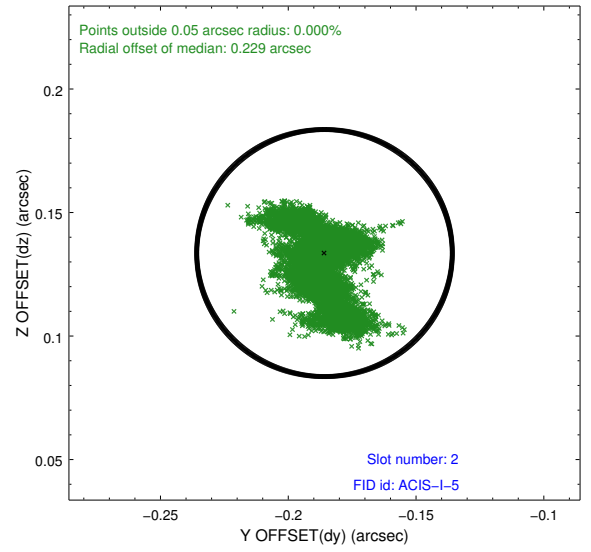
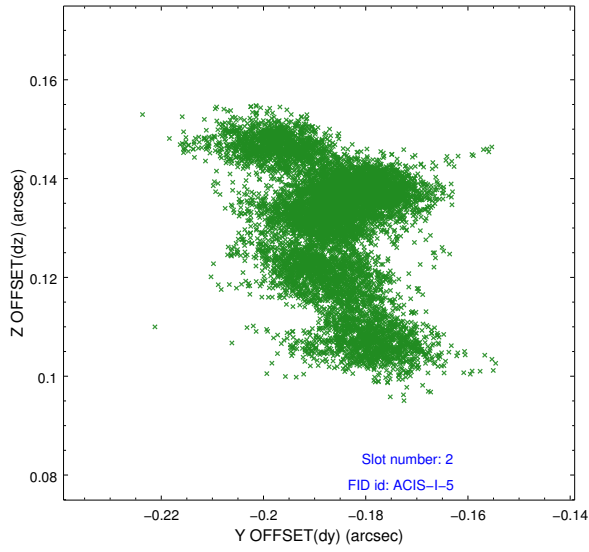
2.5.1 Slot 0



2.5.2 Slot 1



2.5.3 Slot 2



A Summary

A.1 Status

V&V Scientist	Beth Sundheim
V&V Date (YYYY-MM-DD)	2012.03.19
V&V Edition	1
V&V Disposition and Status	OK
V&V Charge Time	36.76273

A.2 Comments

The guide star in slot 4 was removed from the aspect solution due to poor data quality. The aspect solution is improved by the removal of this star from the solution.