

# V&V Reference Report

## L2 ASCDS Version : 8.4.3

Observation 6891 - L2 Version 2  
Chandra X-Ray Center

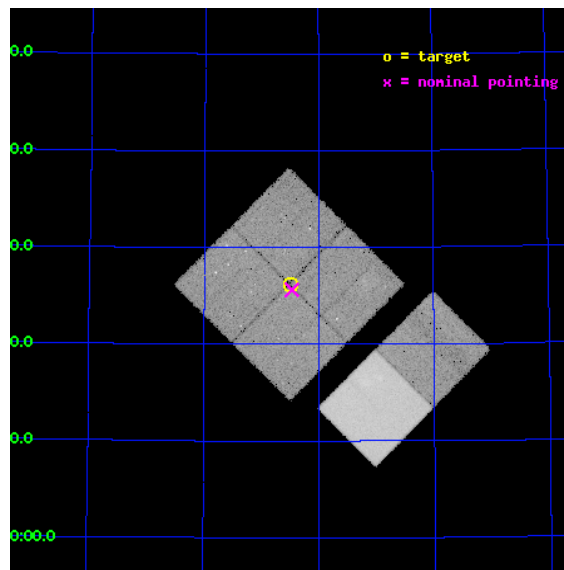
L2 Processing Date : Mar 29 2012

## Contents

<b>1</b>	<b>Front</b>	<b>2</b>
<b>2</b>	<b>OBI</b>	<b>3</b>
2.1	OBI . . . . .	3
2.1.1	Images . . . . .	3
2.1.2	Bias . . . . .	3
2.1.3	Parameters . . . . .	4
2.1.4	Events . . . . .	4
2.2	Compared Parameters . . . . .	5
2.3	Aspect . . . . .	6
2.4	Star Slots . . . . .	9
2.4.1	Slot 3 . . . . .	9
2.4.2	Slot 4 . . . . .	10
2.4.3	Slot 5 . . . . .	11
2.4.4	Slot 6 . . . . .	12
2.4.5	Slot 7 . . . . .	13
2.5	FID Slots . . . . .	14
2.5.1	Slot 0 . . . . .	14
2.5.2	Slot 1 . . . . .	15
2.5.3	Slot 2 . . . . .	16
<b>A</b>	<b>Summary</b>	<b>17</b>
A.1	Status . . . . .	17
A.2	Comments . . . . .	17

# 1 Front

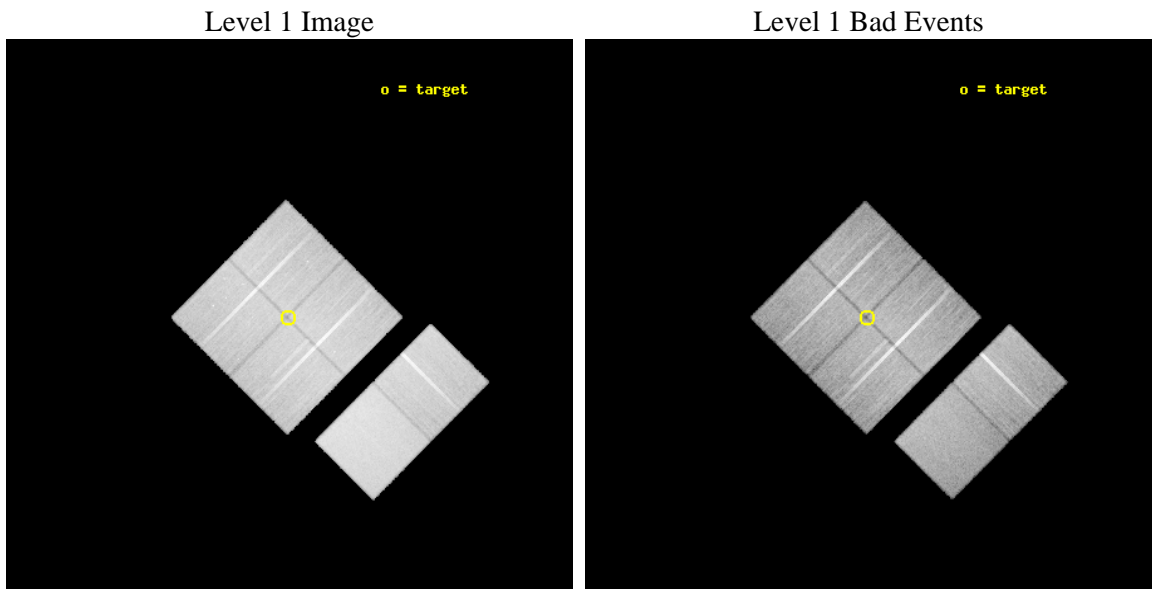
seq_num	701308	Sequence number
obs_id	6891	Observation id
title	Quasars in the MAMBO Deep Millimeter Survey	Proposal title
observer	Dr. Chris Carilli	Principal investigator
object	A2125-Offset	Source name
dtcycle	0	&#160
cycle	P	events from which exps? Prim/Second/Both
ra_targ	235.621667	Observer's specified target RA [deg]
dec_targ	66.436917	Observer's specified target Dec [deg]
ra_nom	235.6170836815	Nominal RA [deg]
dec_nom	66.427331976604	Nominal Dec [deg]
roll_nom	134.77515599891	Nominal Roll [deg]
revision	2	Processing version of data
ontime	31449.558912516	Sum of GTIs [s]
livetime	31051.325660914	Livetime [s]
ontime0	31452.799882829	Sum of GTIs [s]
ontime1	31449.558892608	Sum of GTIs [s]
ontime2	31452.799882829	Sum of GTIs [s]
ontime3	31449.558912516	Sum of GTIs [s]
ontime6	31452.799882829	Sum of GTIs [s]
ontime7	31452.799882829	Sum of GTIs [s]
l2events	303463	Number of level 2 events



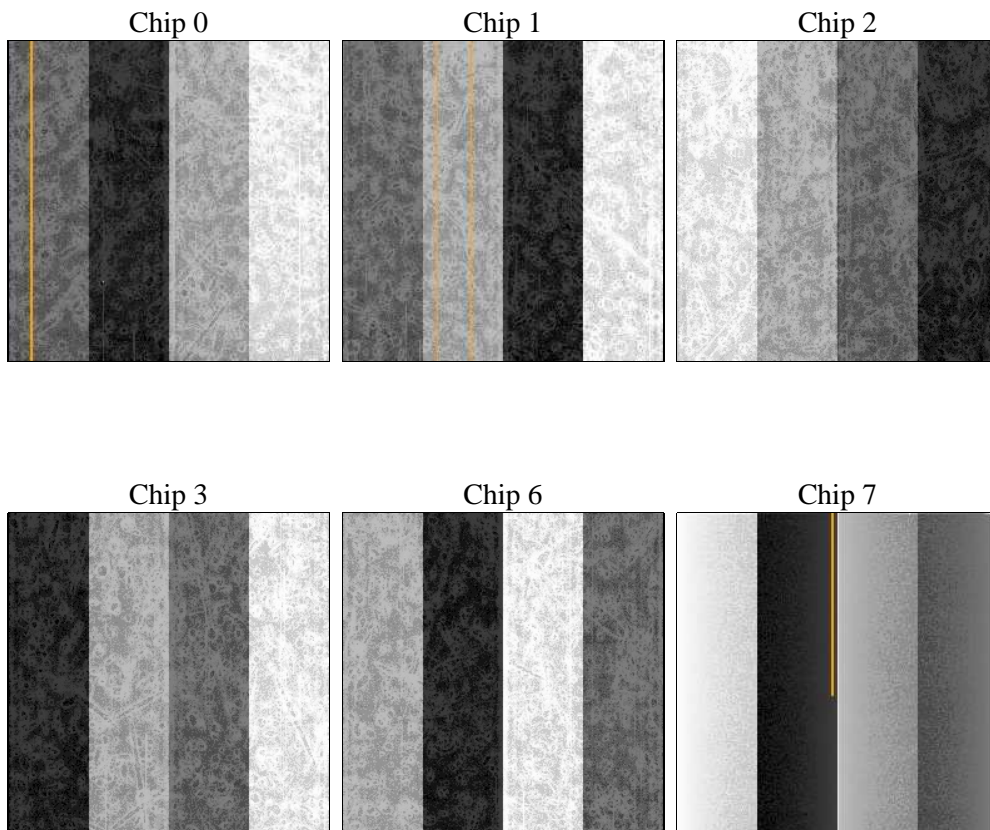
## 2 OBI

### 2.1 OBI

#### 2.1.1 Images



#### 2.1.2 Bias



### 2.1.3 Parameters

obi_num	1	Obi number	sched_exp_time	31500.000000	[s] Scheduled observation exposure time
ascdsver	8.4.3.1	Processing system revision	ontime	31449.558912516	Sum of GTIs [s]
caldbver	4.4.8	&#160	ontime0	31452.799882829	Sum of GTIs [s]
date	2012-03-29T13:04:44	Date and time of file creation	ontime1	31449.558892608	Sum of GTIs [s]
revision	2	Processing version of data	ontime2	31452.799882829	Sum of GTIs [s]
			ontime3	31449.558912516	Sum of GTIs [s]
			ontime6	31452.799882829	Sum of GTIs [s]
			ontime7	31452.799882829	Sum of GTIs [s]
			l1events	1750156	Number of level 1 events

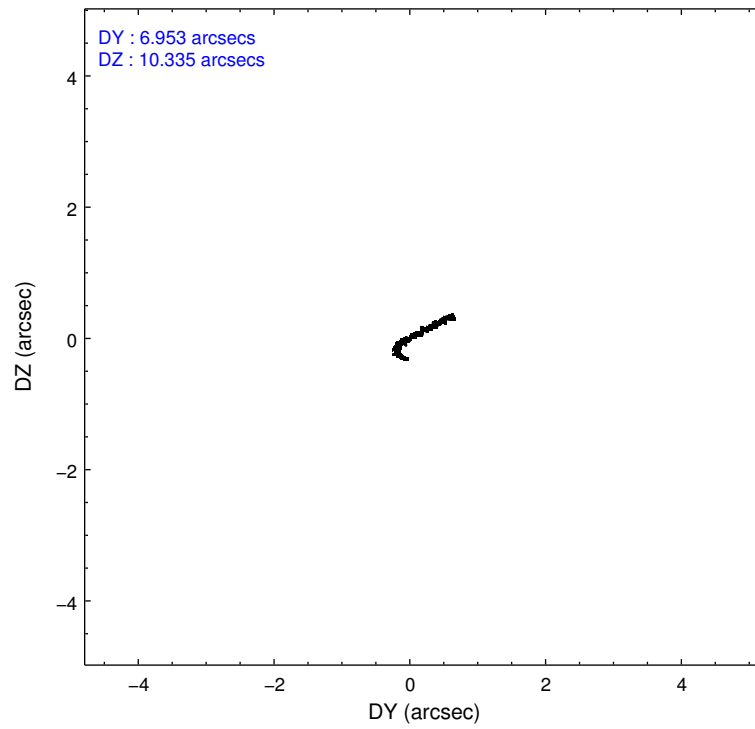
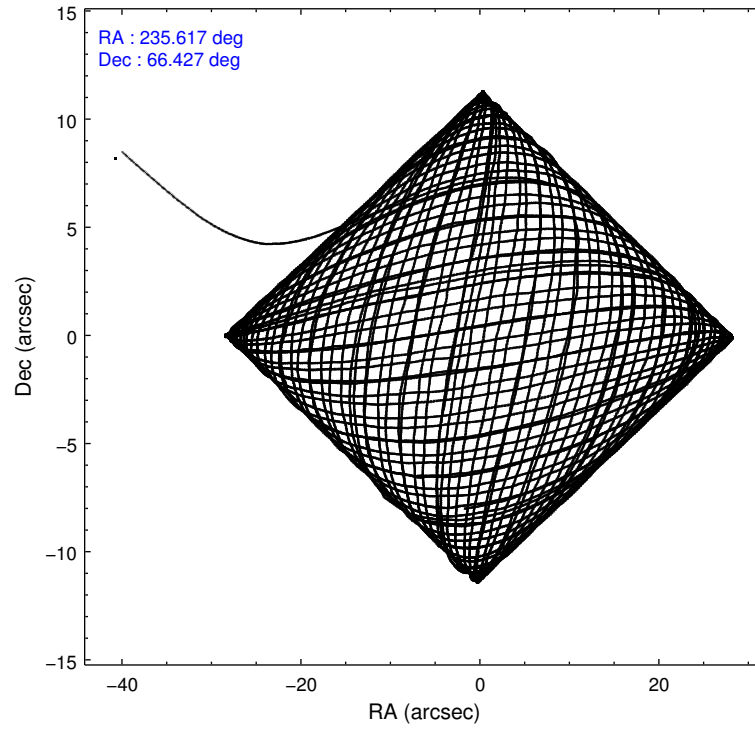
### 2.1.4 Events

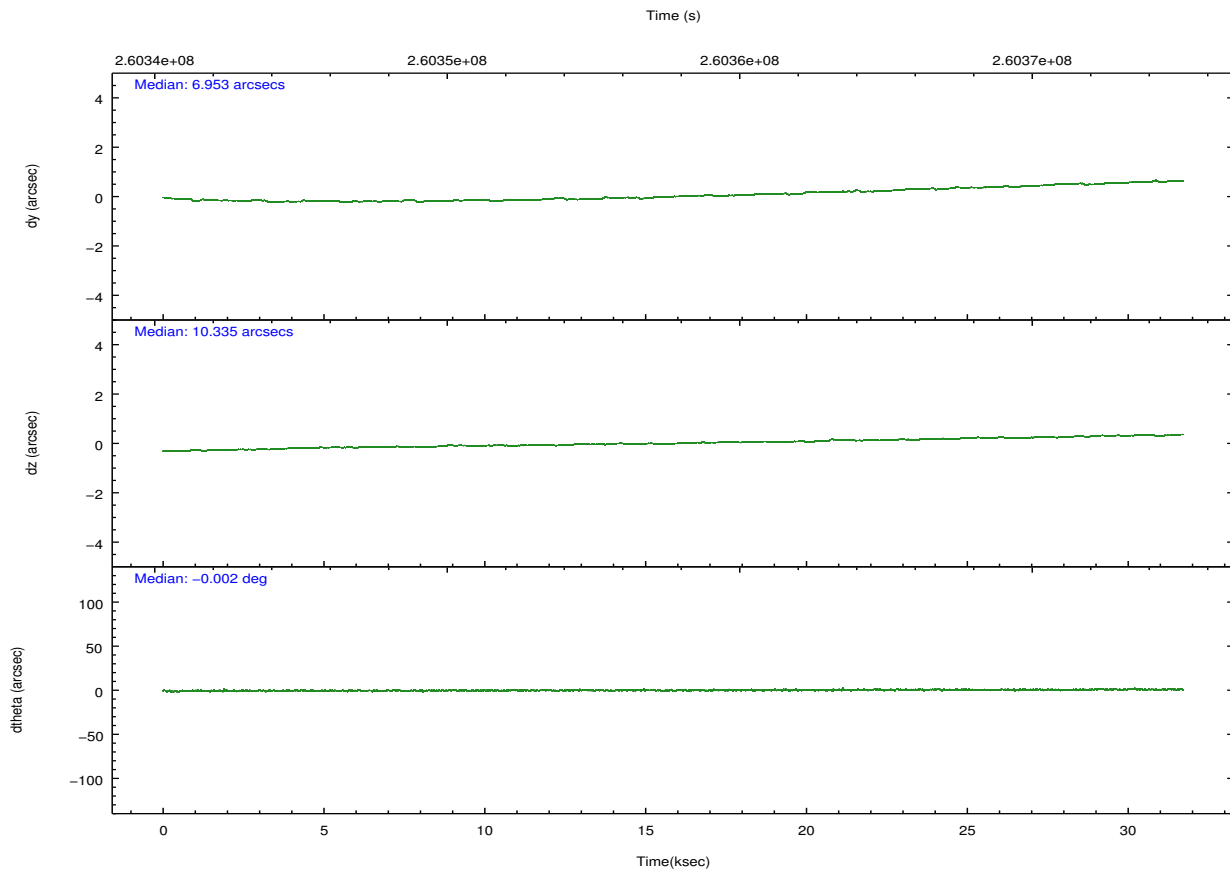
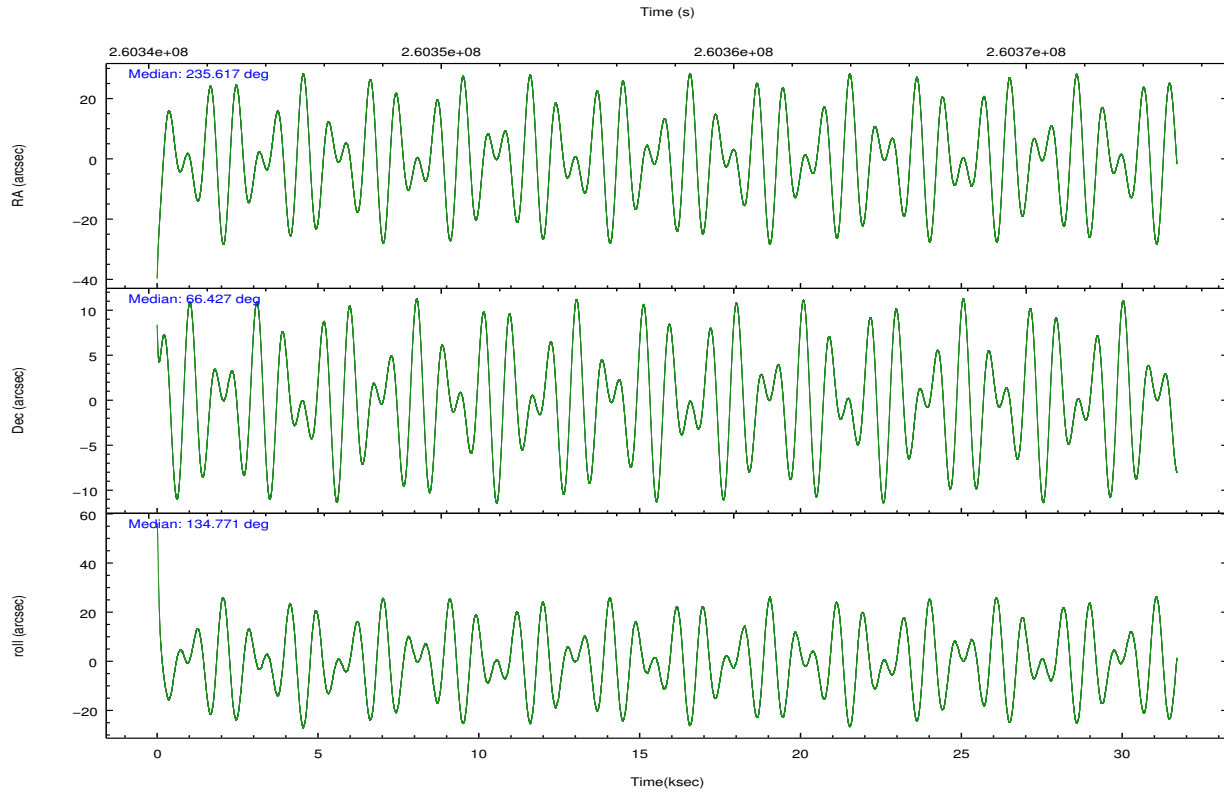
	ccd 0	ccd 1	ccd 2	ccd 3	ccd 6	ccd 7		ccd 0	ccd 1	ccd 2	ccd 3	ccd 6	ccd 7
level 1 events	261335	259053	284169	276033	285977	383589	grade 0 events	14085	14259	16057	14068	12907	14787
rejected events	228125	223080	249822	243582	252537	222144		5%	5%	5%	5%	4%	3%
rejected %	87%	86%	87%	88%	88%	57%	grade 1 events	161	148	173	189	170	391
								0%	0%	0%	0%	0%	0%
							grade 2 events	7185	7867	6865	6223	7212	32200
								2%	3%	2%	2%	2%	8%
							grade 3 events	3224	3407	3075	3197	3266	14166
								1%	1%	1%	1%	1%	3%
							grade 4 events	3021	3444	3079	3121	3136	14151
								1%	1%	1%	1%	1%	3%
							grade 5 events	11055	11774	10687	12580	13311	36140
								4%	4%	3%	4%	4%	9%
							grade 6 events	5697	7004	5276	5845	6930	86163
								2%	2%	1%	2%	2%	22%
							grade 7 events	216907	211150	238957	230810	239045	185591
								82%	81%	84%	83%	83%	48%

## 2.2 Compared Parameters

Parameter	Planned	Actual	Parameter	Planned	Actual
Instrument	ACIS	ACIS	Obspar format version number	7	7
Detector	ACIS-012367	ACIS-012367	Obspar file type	PREDICTED	ACTUAL
Grating	NONE	NONE	Obspar update status	NONE	UPDATED
Data mode	VFAINT	VFAINT	Number of optional ACIS chips dropped	0	0
Observation mode	POINTING	POINTING	On-chip summing requested	N	N
[deg] Pointing RA	235.683218	235.6170836815038	Subarray requested	NONE	NONE
[deg] Pointing Dec	66.420217	66.42733197660414	Alternating exposures requested	N	N
[deg] Pointing Roll	134.505850	134.7751559989083	[s] Primary exposure time	0.000000	3.2
[mm] SIM focus pos	-0.782348	-0.7809083437167272			
[mm] SIM defocus	0	0.001439871863259334			
[mm] SIM translation stage pos	-233.592463	-233.5874344608287			
[mm] SIM translation stage offset	0	-0.005018542100998502			
[s] Observation start time (MET)	260342073.184000	260341089.2694			
Observation start date	2006-04-02T05:13:28	2006-04-02T04:58:09			
[s] Observation end time (MET)	260373573.184000	260374320.79595			
Observation end date	2006-04-02T13:58:28	2006-04-02T14:12:00			
Read mode	TIMED	TIMED			

## 2.3 Aspect



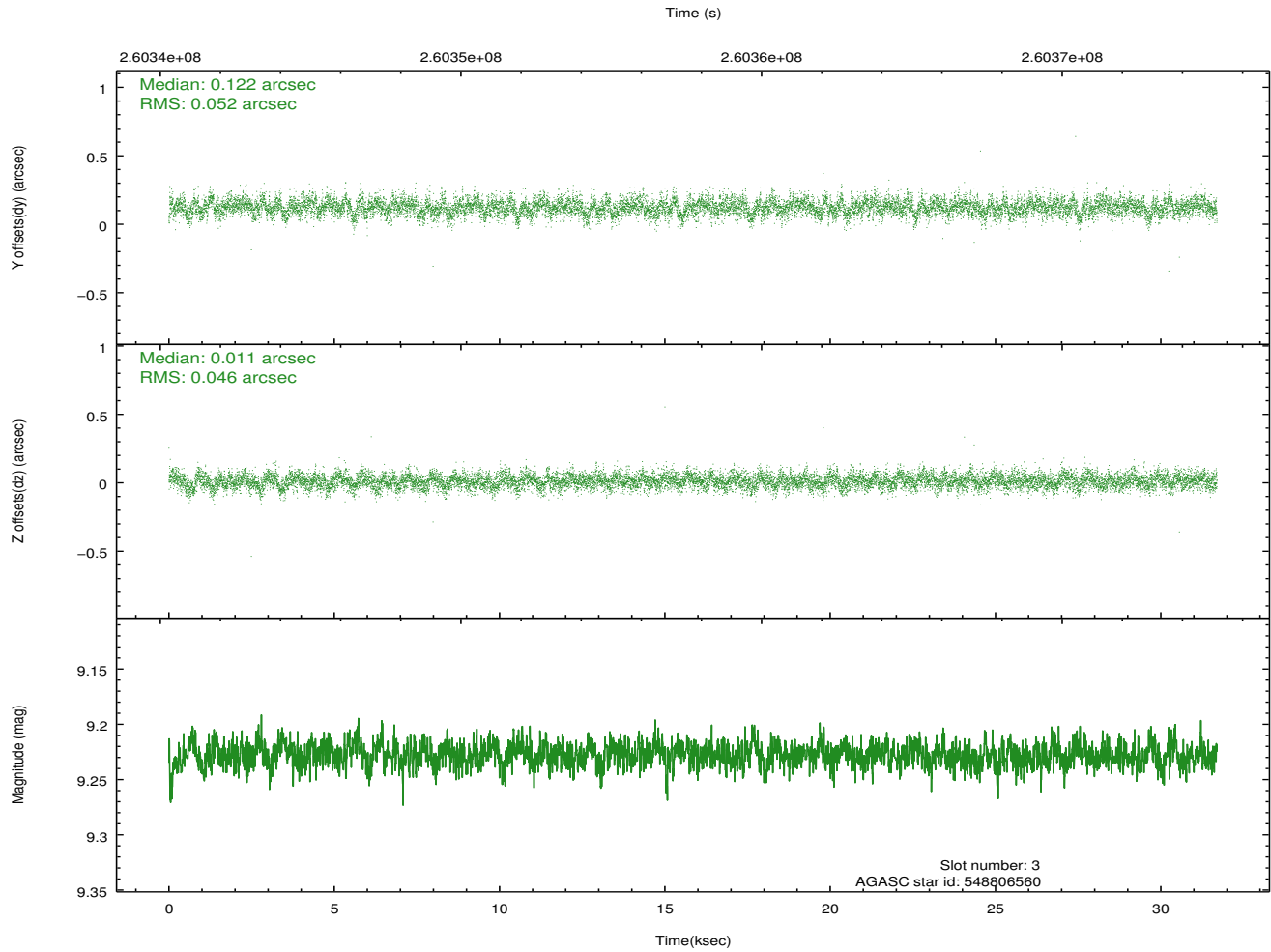
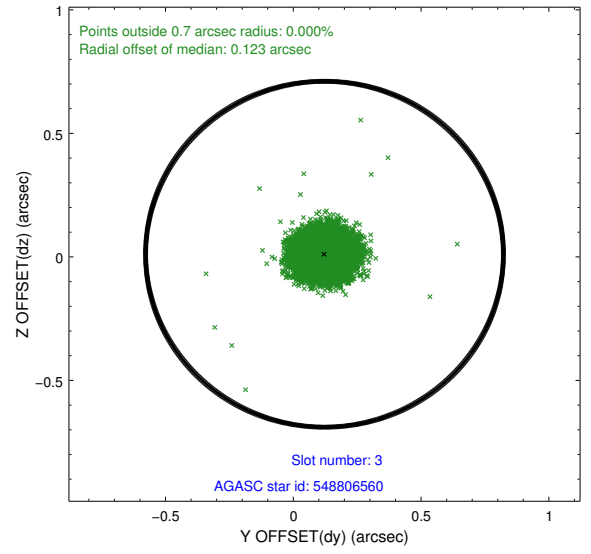
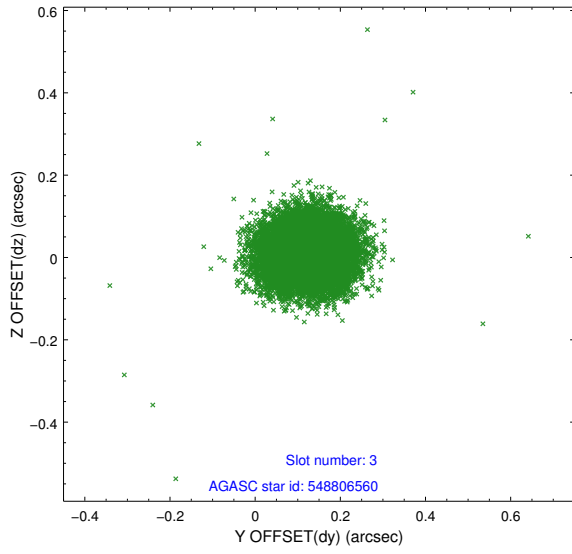


### Slot Statistics

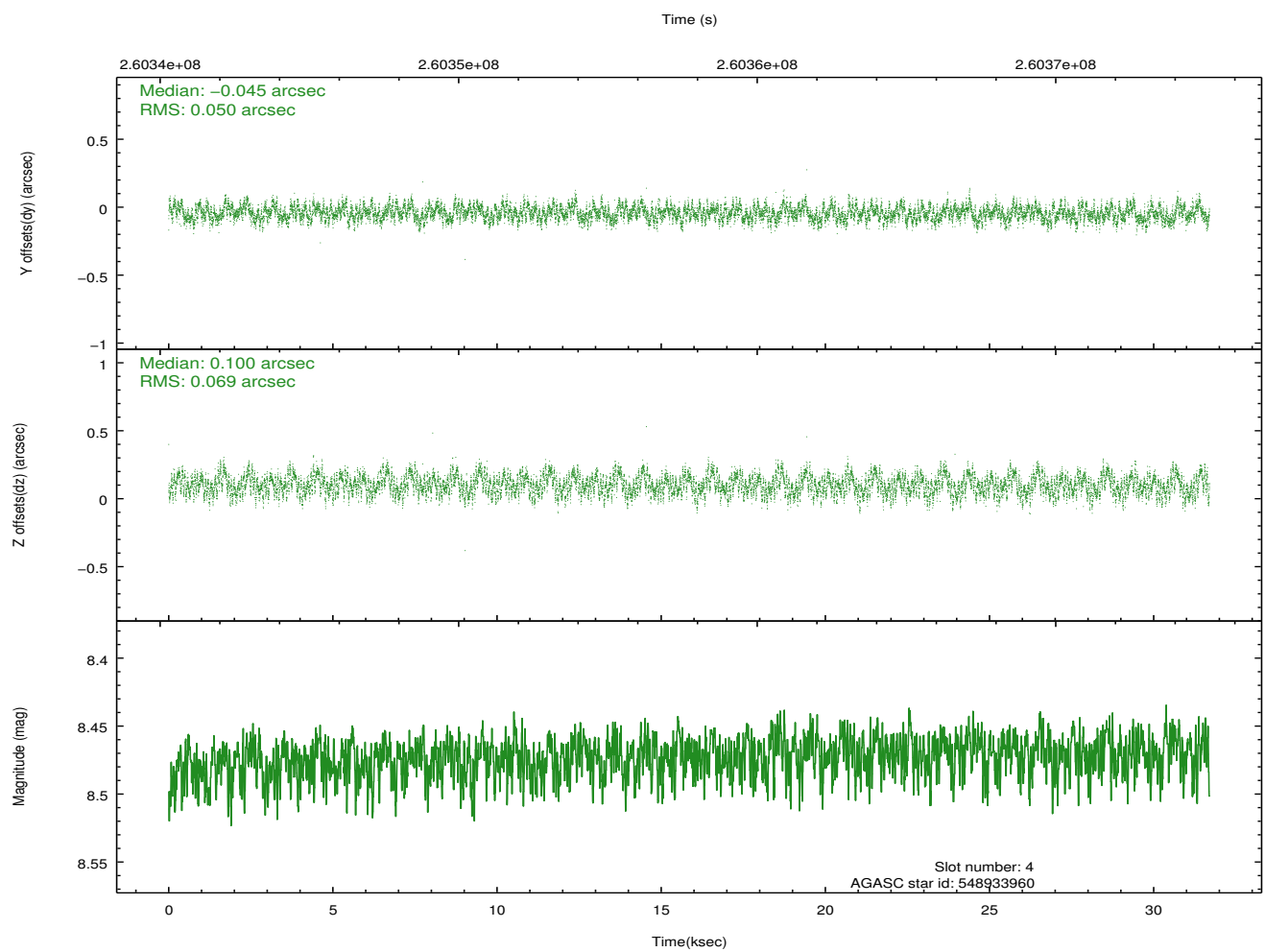
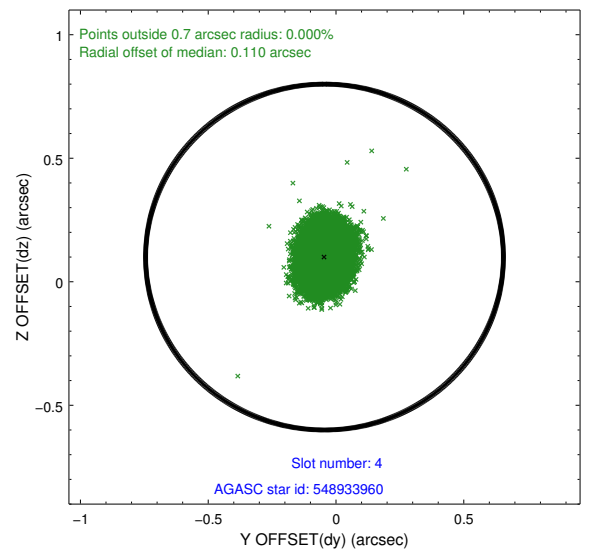
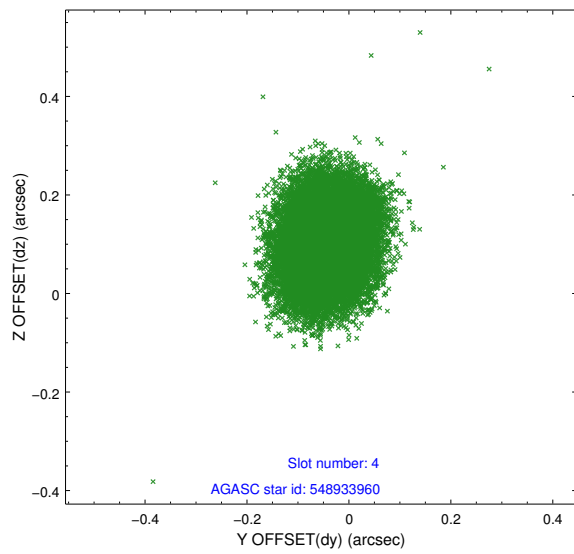
slot	status	id	mag	n_pts	med_dy	med_dz	dr1	dr2	ra	dec	mean_y	mean_z
0	FID	ACIS-I-1	7.24	7732	0.020	-0.008	0.014	0.030	0.000000	0.000000	932.66	-833.85
1	FID	ACIS-I-5	7.23	7732	-0.165	0.036	0.010	0.022	0.000000	0.000000	-1815.59	1063.67
2	FID	ACIS-I-6	7.26	7732	0.054	0.043	0.009	0.015	0.000000	0.000000	398.19	1708.24
3	GUIDE	548806560	9.23	15457	0.122	0.011	0.073	0.119	234.048610	66.578455	2068.09	1247.64
4	GUIDE	548933960	8.47	15460	-0.045	0.100	0.092	0.142	237.671184	66.428675	-1951.52	-2093.46
5	GUIDE	548934848	8.23	15459	-0.145	-0.134	0.069	0.108	235.310442	66.385864	289.82	468.83
6	GUIDE	548935144	9.16	15452	0.091	0.118	0.105	0.175	235.100115	67.073922	2254.95	-1068.83
7	GUIDE	548933640	9.04	15454	-0.024	-0.087	0.116	0.182	234.501000	66.048749	269.17	2158.37

## 2.4 Star Slots

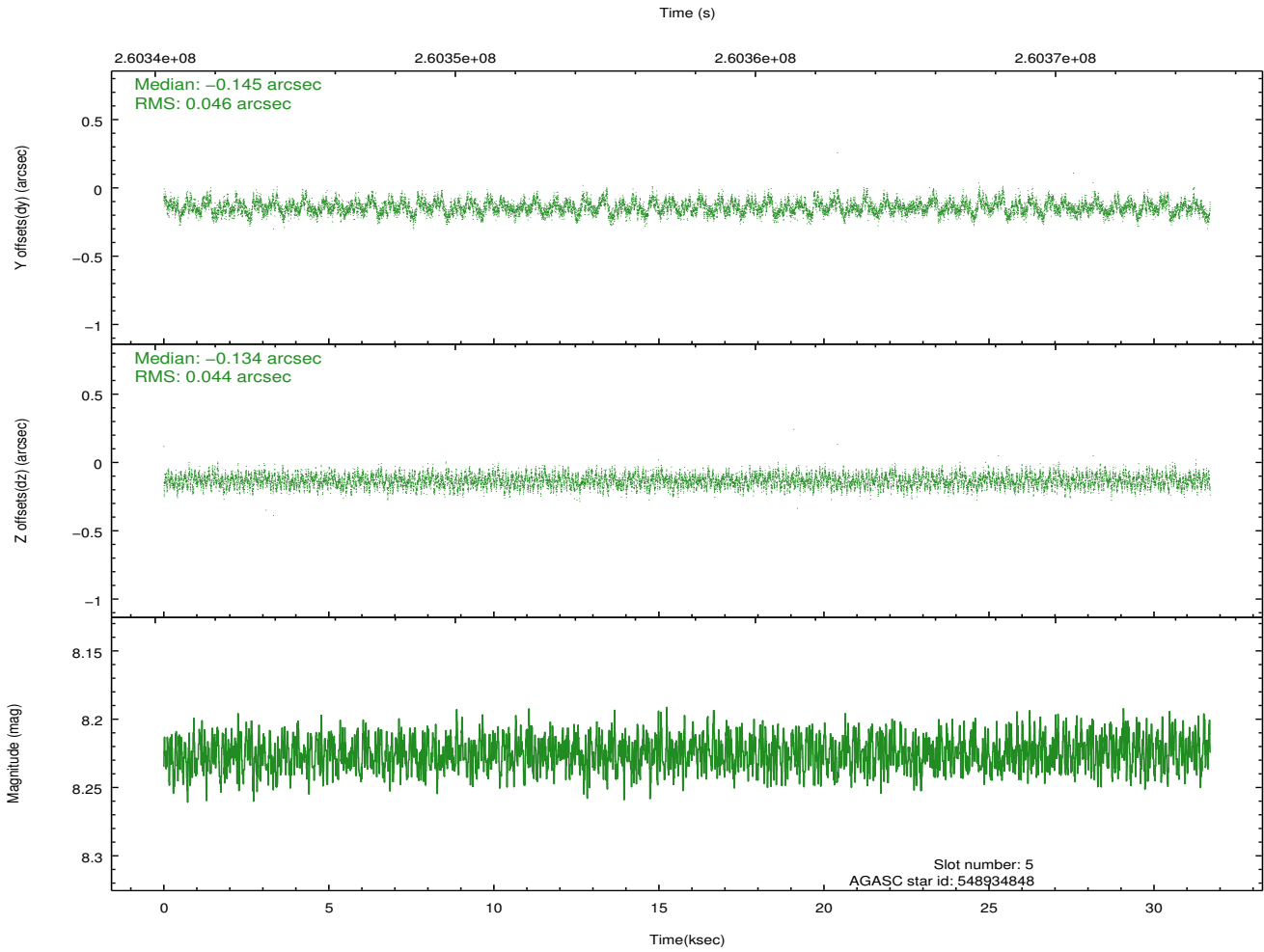
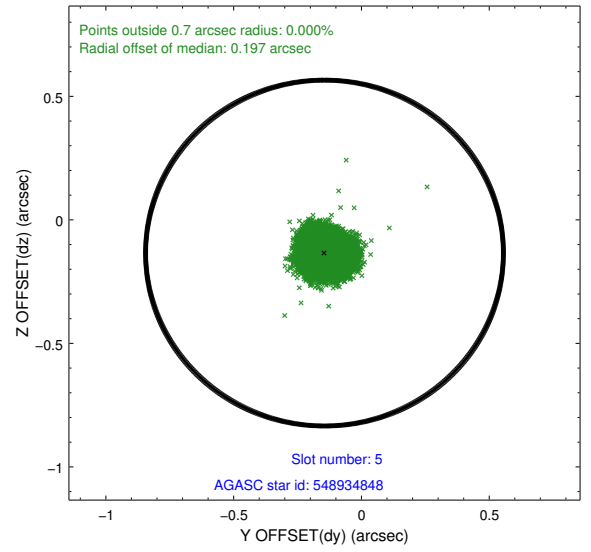
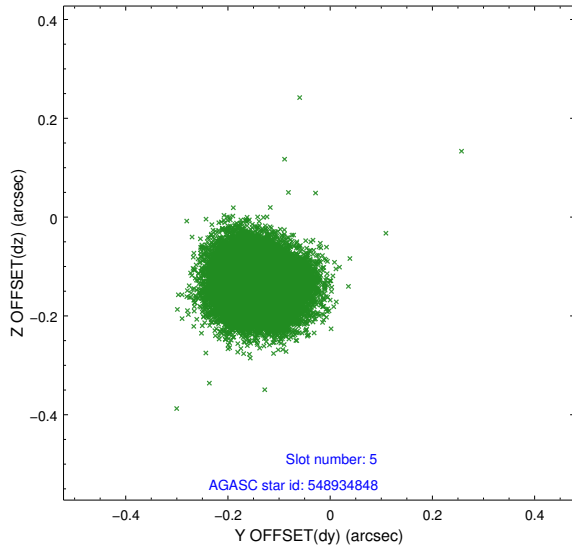
### 2.4.1 Slot 3



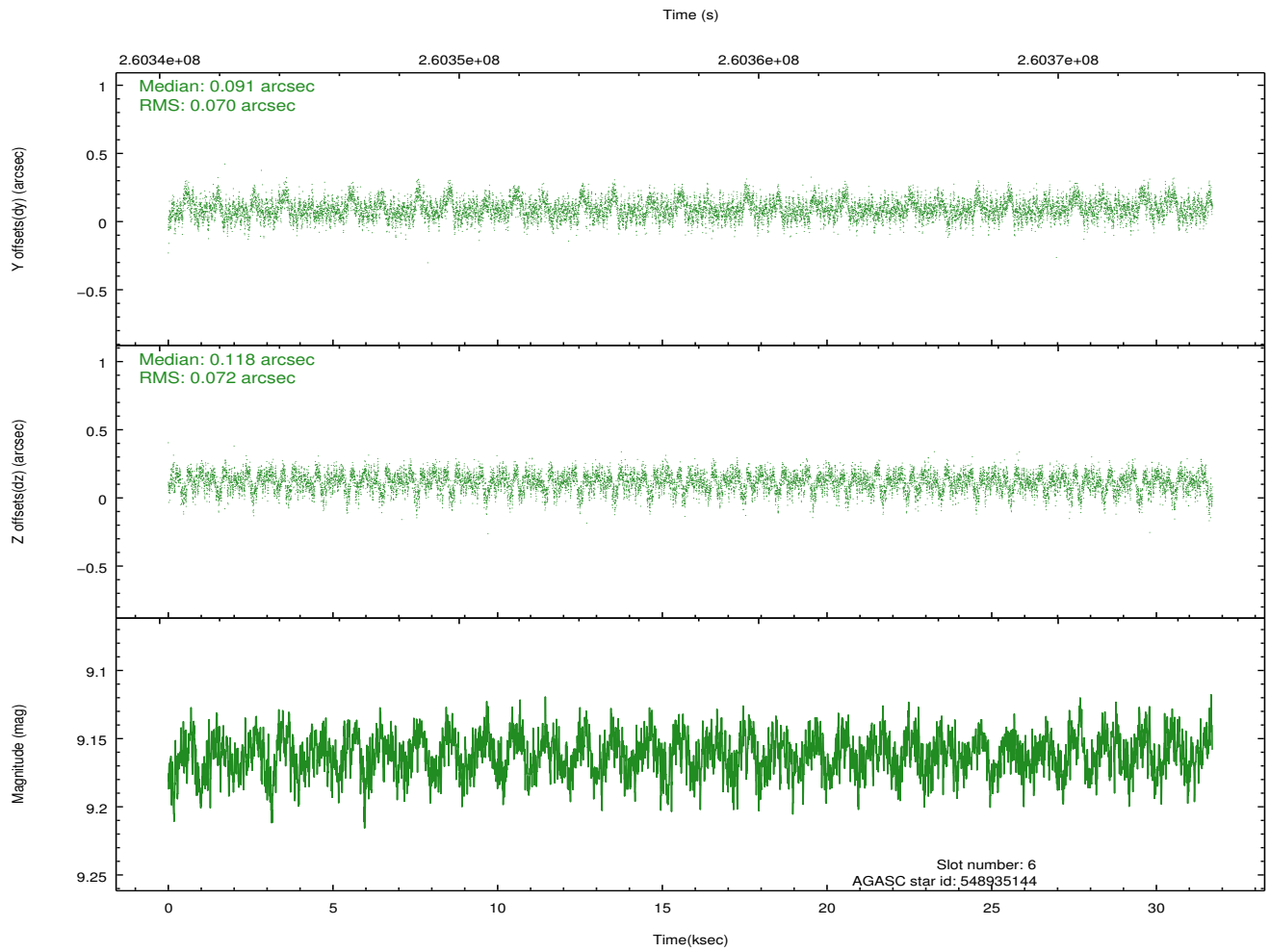
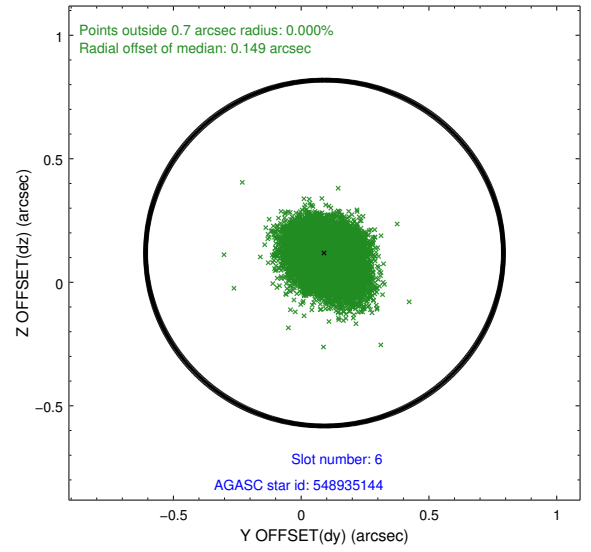
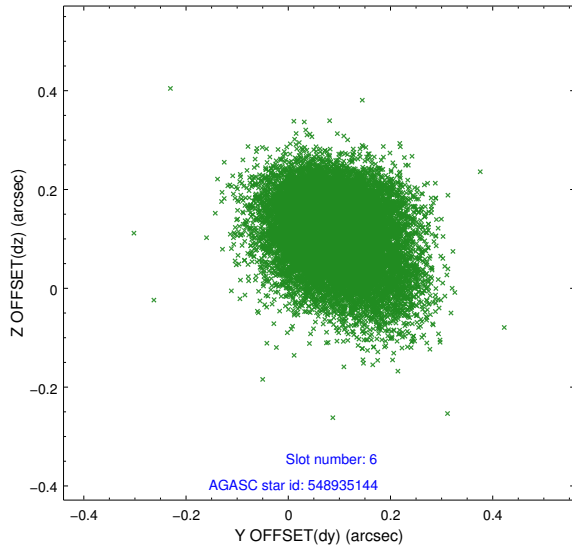
## 2.4.2 Slot 4



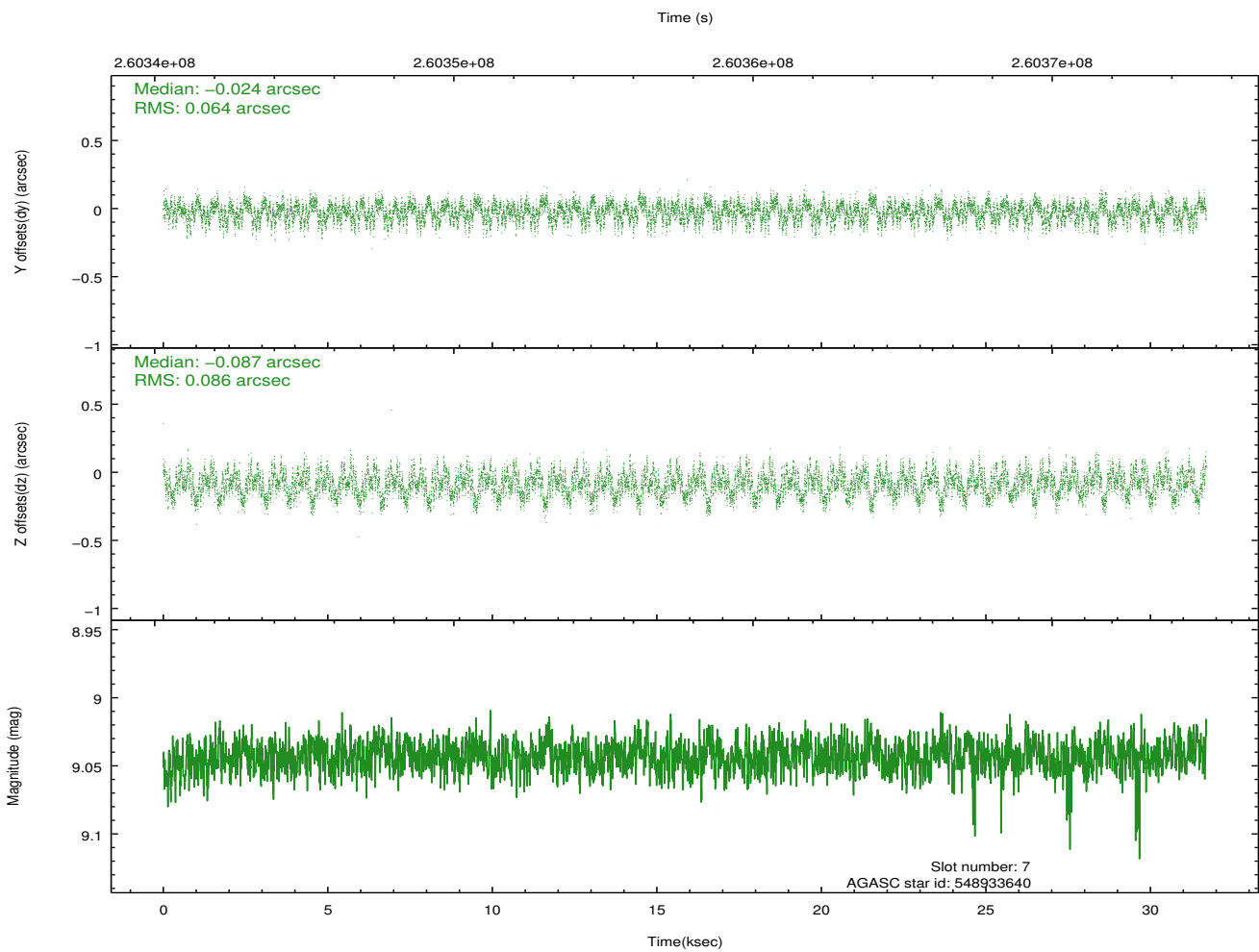
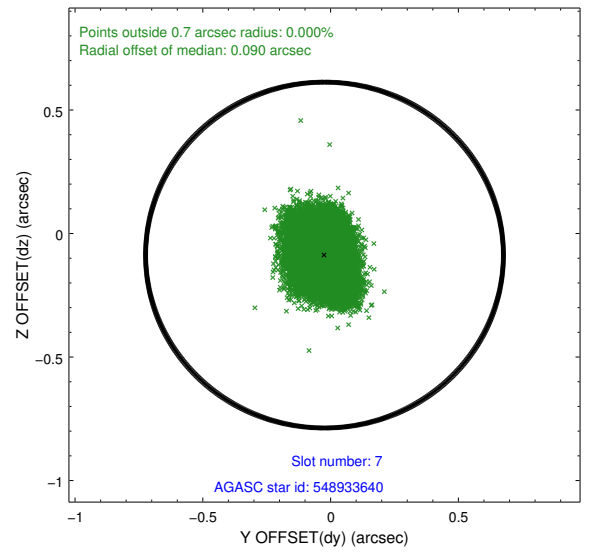
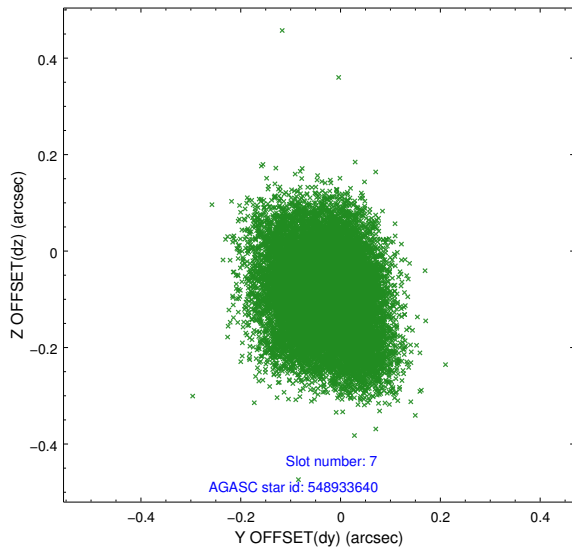
### 2.4.3 Slot 5



### 2.4.4 Slot 6

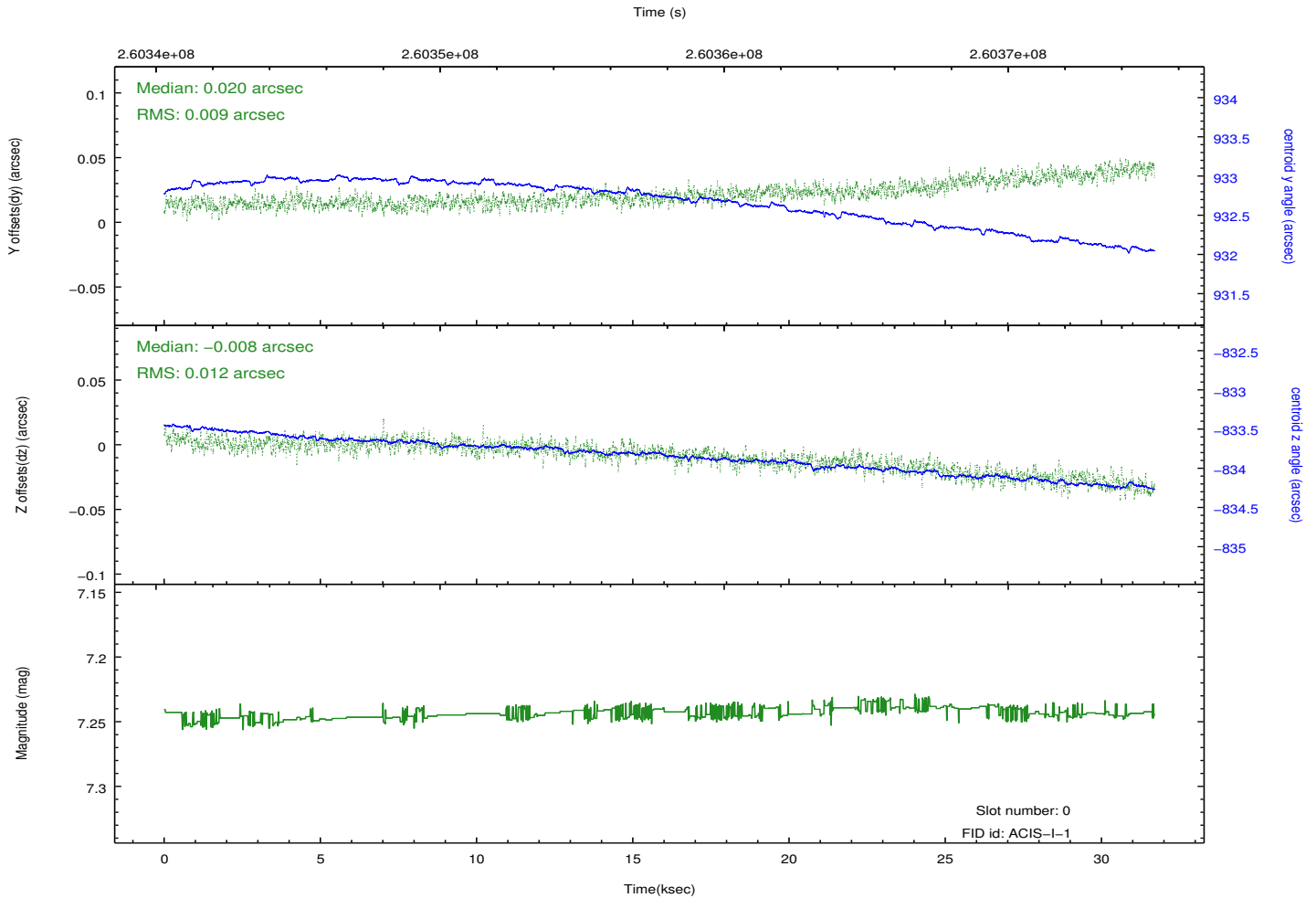
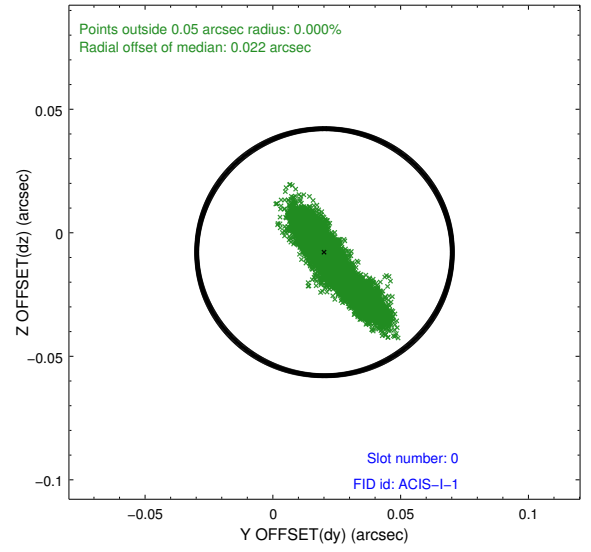
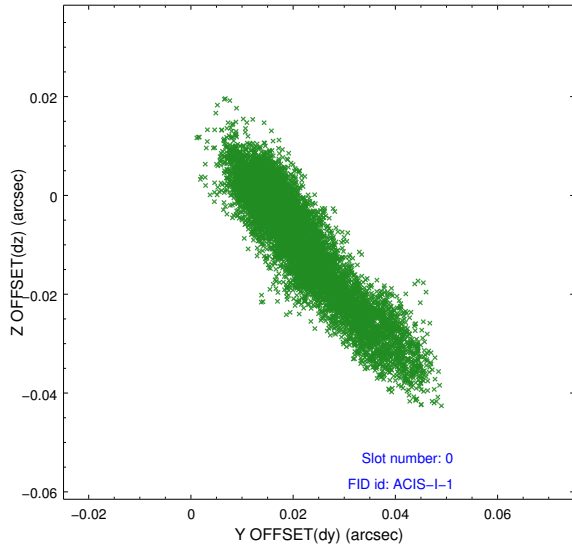


## 2.4.5 Slot 7

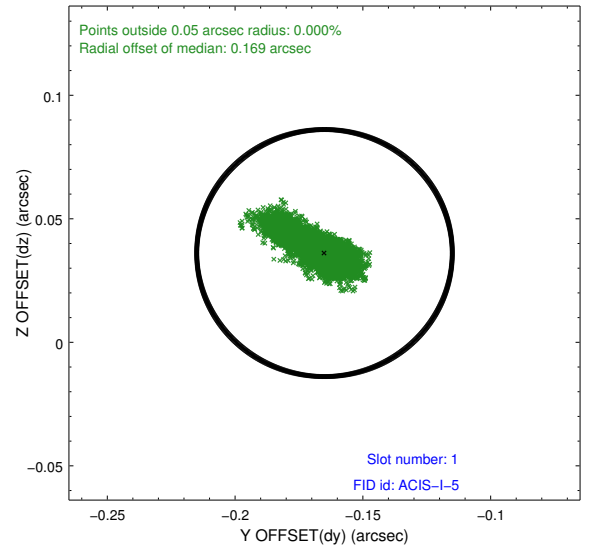
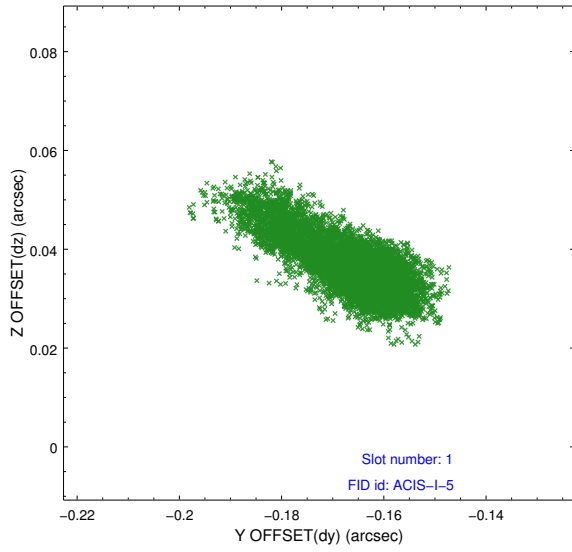


## 2.5 FID Slots

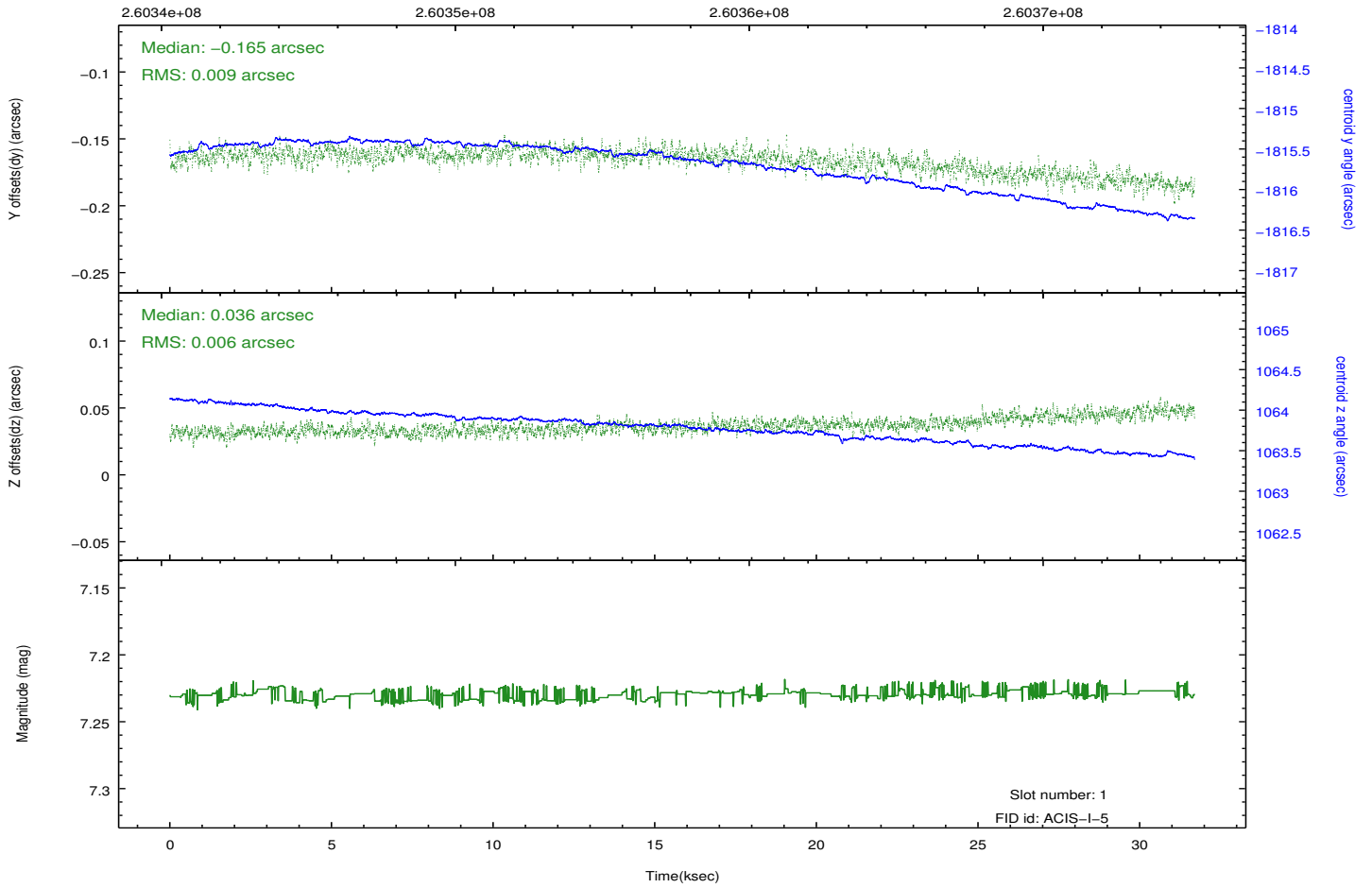
### 2.5.1 Slot 0



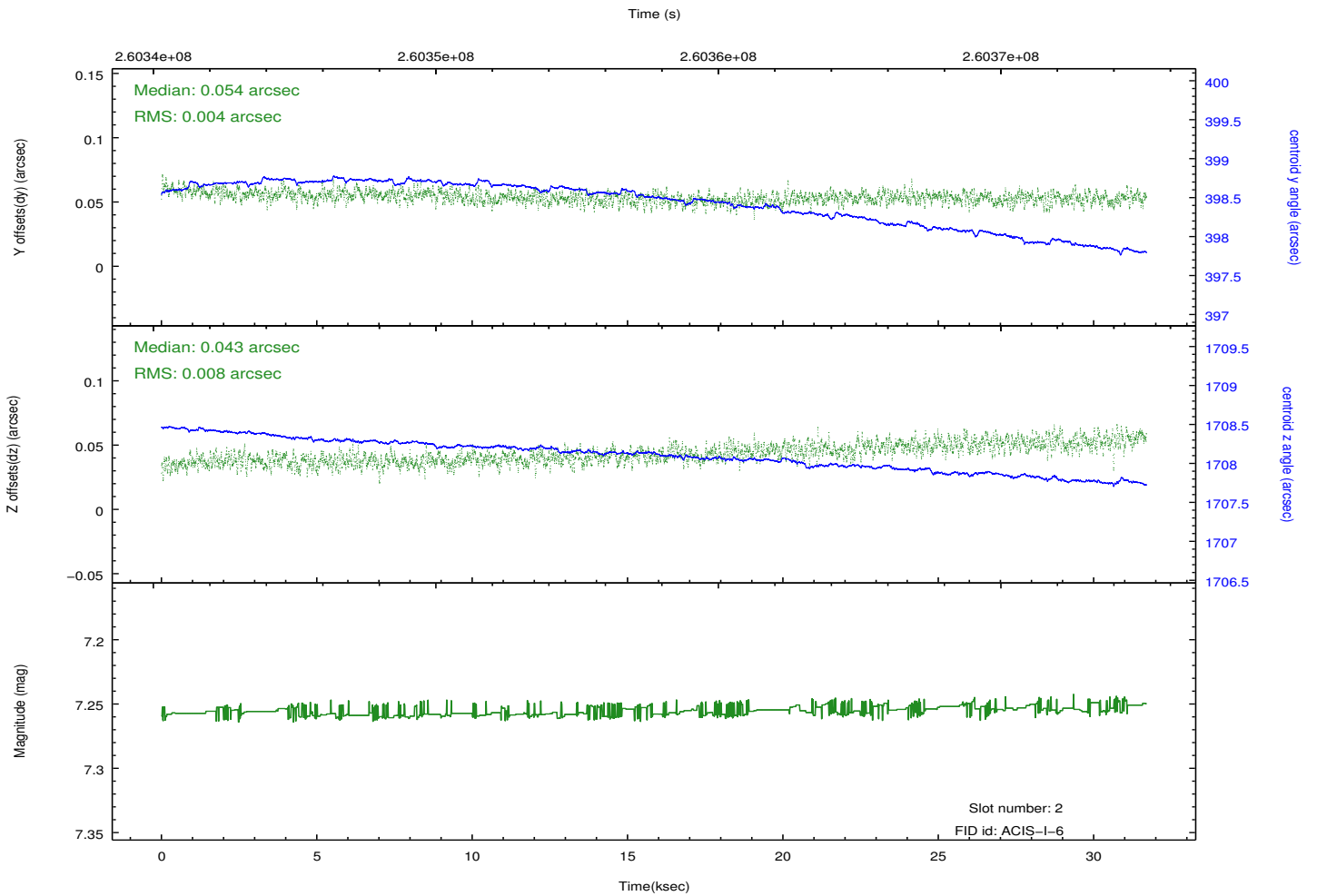
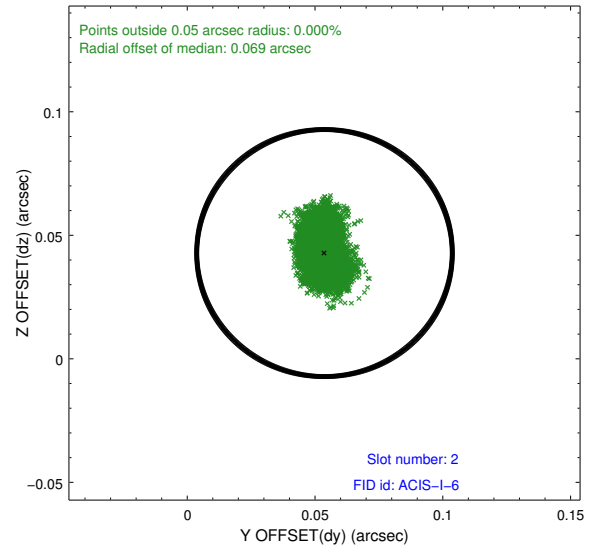
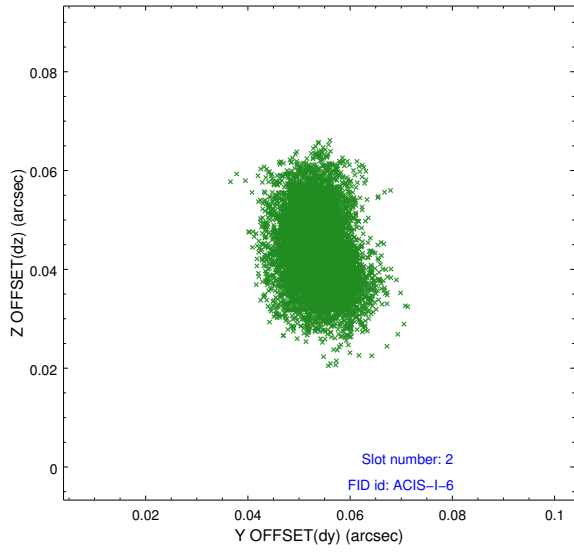
## 2.5.2 Slot 1



Time (s)



### 2.5.3 Slot 2



# A Summary

## A.1 Status

V&V Scientist	Jen Lauer
V&V Date (YYYY-MM-DD)	2012.03.30
V&V Edition	1
V&V Disposition and Status	OK
V&V Charge Time	31.4495589

## A.2 Comments