

V&V Reference Report

L2 ASCDS Version : 8.4.3.1

Observation 6901 - L2 Version 2
Chandra X-Ray Center

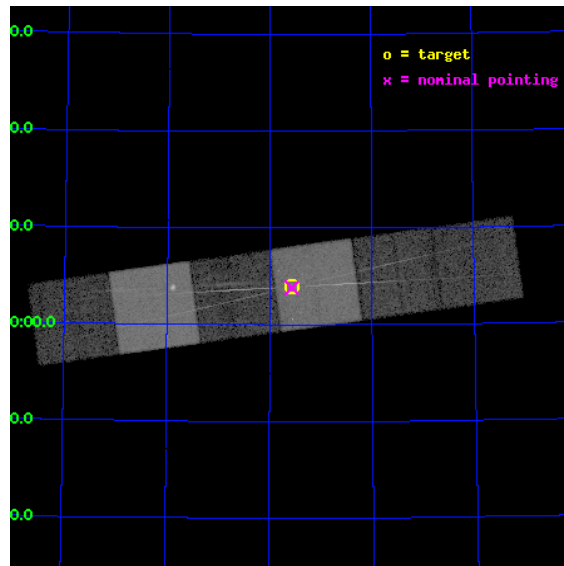
L2 Processing Date : Apr 7 2012

Contents

1	Front	2
2	OBI	3
2.1	OBI	3
2.1.1	Images	3
2.1.2	Bias	3
2.1.3	Parameters	4
2.1.4	Events	4
2.2	Compared Parameters	5
2.3	Aspect	6
2.4	Star Slots	9
2.4.1	Slot 3	9
2.4.2	Slot 4	10
2.4.3	Slot 5	11
2.4.4	Slot 6	12
2.4.5	Slot 7	13
2.5	FID Slots	14
2.5.1	Slot 0	14
2.5.2	Slot 1	15
2.5.3	Slot 2	16
3	Gratings	17
3.1	HEG Arm	17
3.2	MEG Arm	19
A	Summary	21
A.1	Status	21
A.2	Comments	21

1 Front

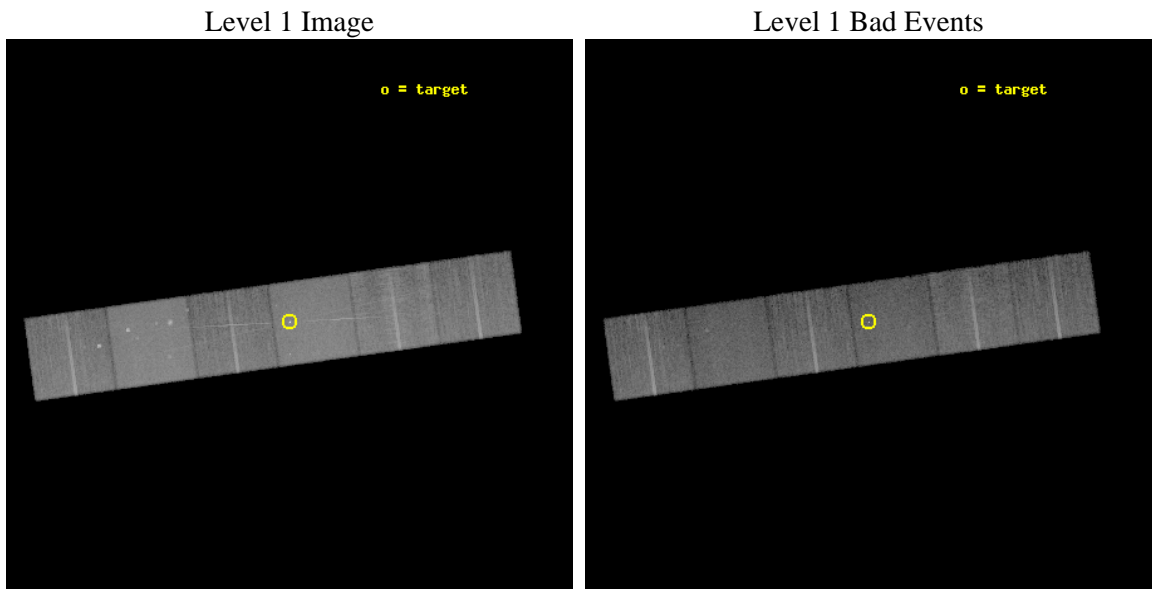
seq_num	701318	Sequence number
obs_id	6901	Observation id
title	Testing Broad-Band Jet-Powered Emission in the LLAGN M81*	Proposal
observer	Dr Jon Miller	Principal investigator
object	M81*	Source name
dtcycle	0	
cycle	P	events from which exps? Prim/Second/Both
ra_targ	148.888333	Observer's specified target RA [deg]
dec_targ	69.065306	Observer's specified target Dec [deg]
ra_nom	148.89127759947	Nominal RA [deg]
dec_nom	69.063484820897	Nominal Dec [deg]
roll_nom	352.0948920887	Nominal Roll [deg]
revision	2	Processing version of data
ontime	14952.531473219	Sum of GTIs [s]
liveltime	14763.193516372	Livetime [s]
ontime4	14949.331652582	Sum of GTIs [s]
ontime5	14952.490433216	Sum of GTIs [s]
ontime6	14952.449393213	Sum of GTIs [s]
ontime7	14952.531473219	Sum of GTIs [s]
ontime8	14952.408353209	Sum of GTIs [s]
ontime9	14952.367313206	Sum of GTIs [s]
l2events	238836	Number of level 2 events



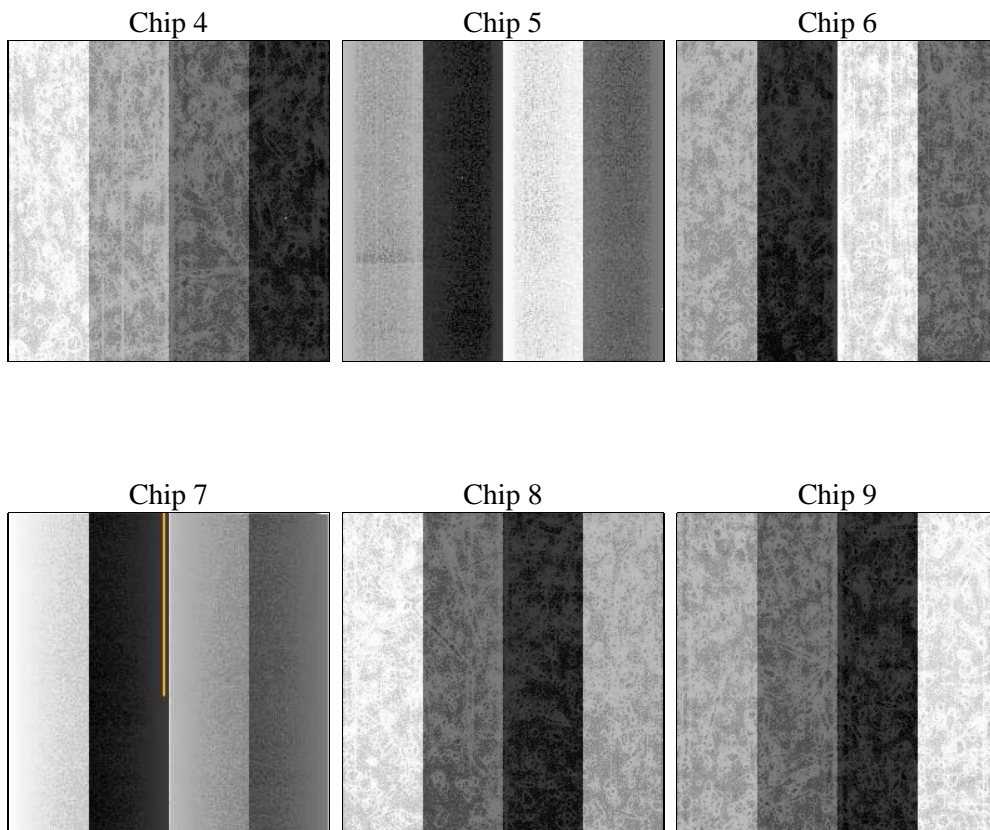
2 OBI

2.1 OBI

2.1.1 Images



2.1.2 Bias



2.1.3 Parameters

obi_num	0	Obi number	sched_exp_time	15000.000000	[s] Scheduled observation exposure time
ascdsver	8.4.3.1	Processing system revision	ontime	14952.531473219	Sum of GTIs [s]
caldsver	4.4.9	 	ontime4	14949.331652582	Sum of GTIs [s]
date	2012-04-07T08:47:40	Date and time of file creation	ontime5	14952.490433216	Sum of GTIs [s]
revision	2	Processing version of data	ontime6	14952.449393213	Sum of GTIs [s]
			ontime7	14952.531473219	Sum of GTIs [s]
			ontime8	14952.408353209	Sum of GTIs [s]
			ontime9	14952.367313206	Sum of GTIs [s]
			l1events	1005392	Number of level 1 events

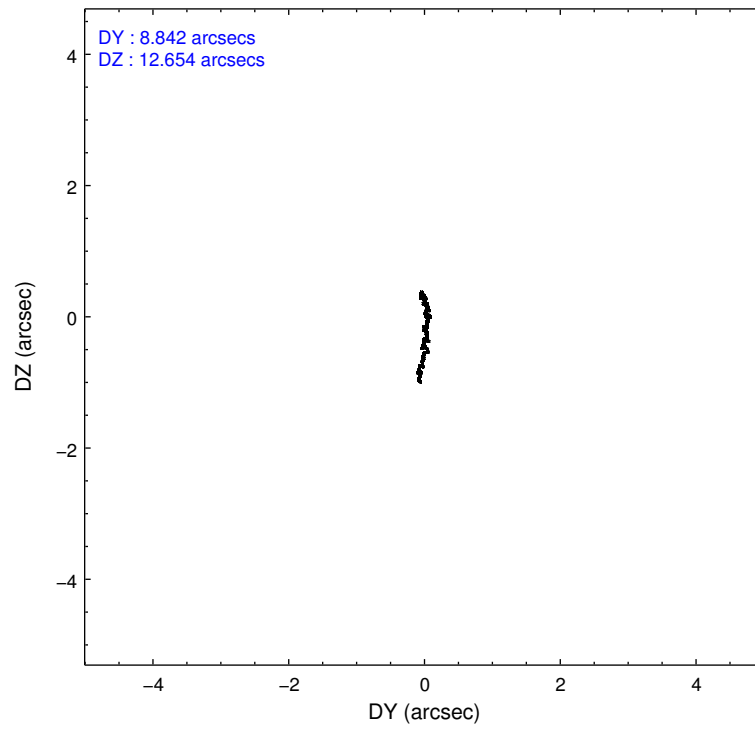
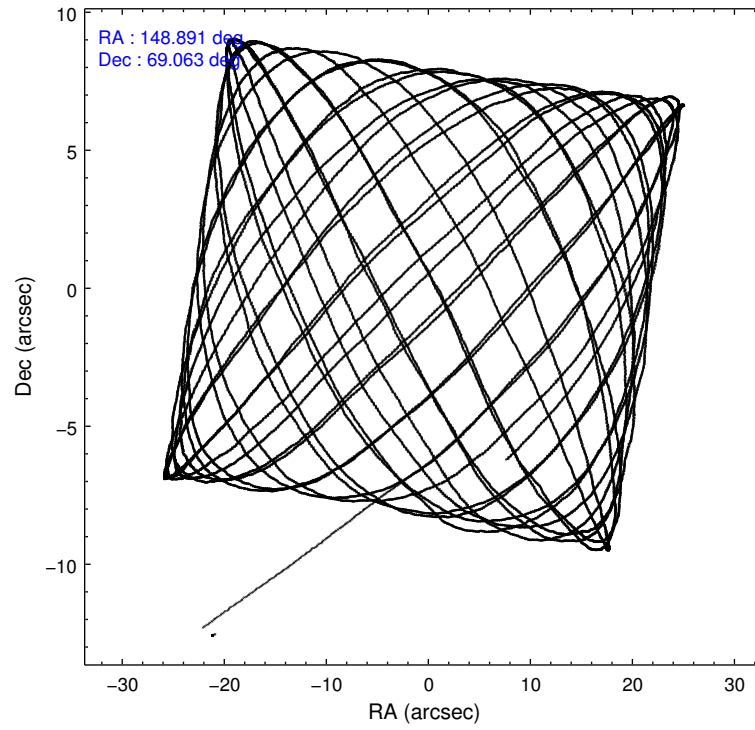
2.1.4 Events

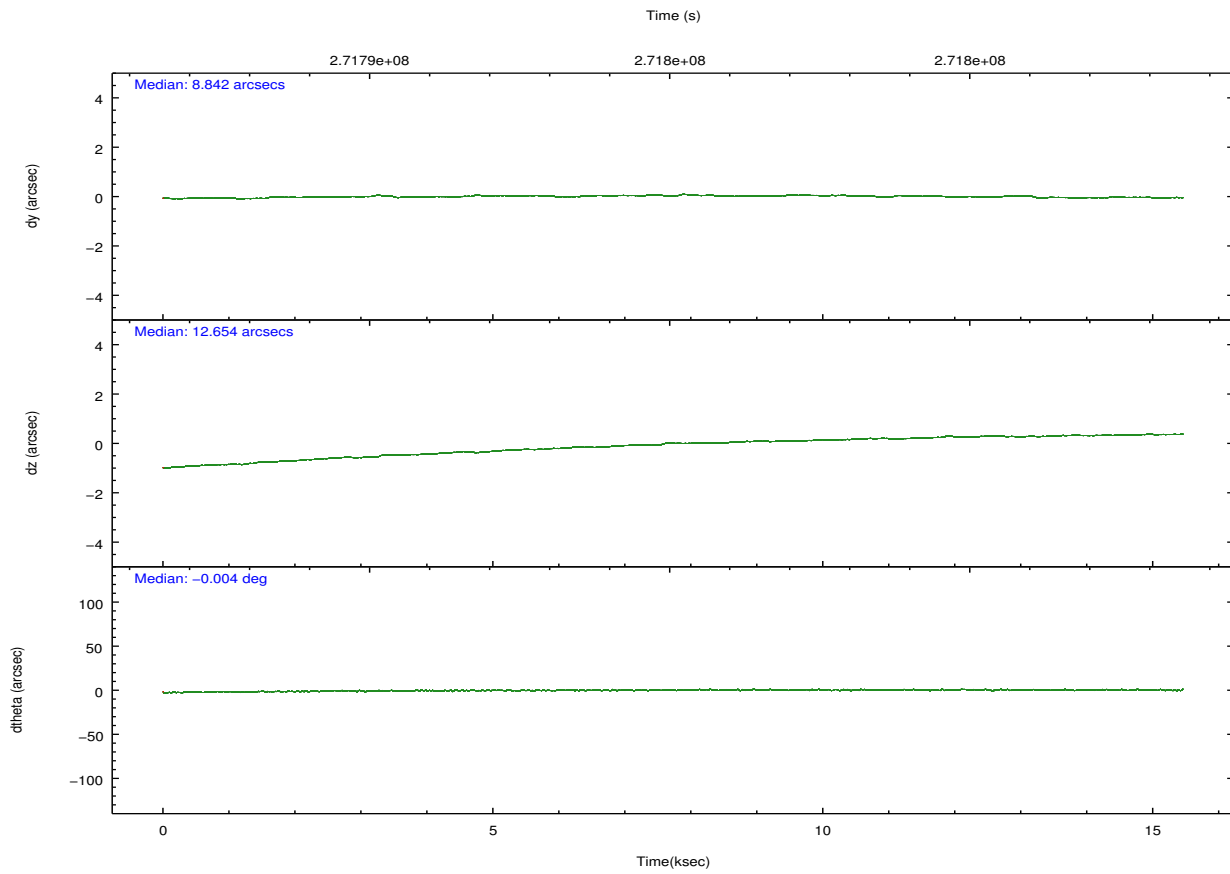
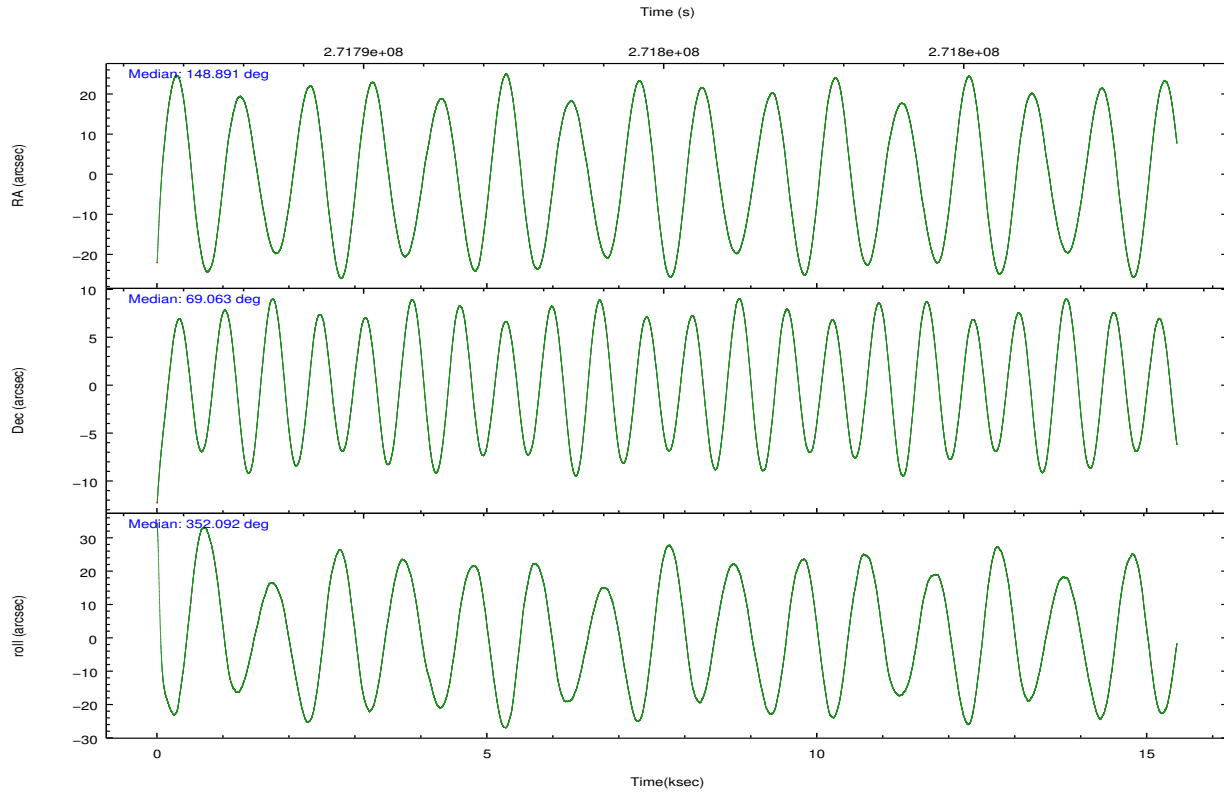
	ccd 4	ccd 5	ccd 6	ccd 7	ccd 8	ccd 9		ccd 4	ccd 5	ccd 6	ccd 7	ccd 8	ccd 9
level 1 events	155307	205774	140851	192662	176522	134276	grade 0 events	9938	9055	9930	8224	13325	6958
rejected events	135700	109923	120180	108354	136509	117674		6%	4%	7%	4%	7%	5%
rejected %	87%	53%	85%	56%	77%	87%	grade 1 events	151	513	99	258	124	91
								0%	0%	0%	0%	0%	0%
							grade 2 events	3654	28985	4076	16988	8771	3283
								2%	14%	2%	8%	4%	2%
							grade 3 events	1680	3811	1713	7532	4048	1620
								1%	1%	1%	3%	2%	1%
							grade 4 events	1634	3705	1629	7583	3669	1530
								1%	1%	1%	3%	2%	1%
							grade 5 events	6060	15017	6303	17930	8473	6651
								3%	7%	4%	9%	4%	4%
							grade 6 events	2707	50312	3326	44003	10203	3213
								1%	24%	2%	22%	5%	2%
							grade 7 events	129483	94376	113775	90144	127909	110930
								83%	45%	80%	46%	72%	82%

2.2 Compared Parameters

Parameter	Planned	Actual	Parameter	Planned	Actual
Instrument	ACIS	ACIS	Obspar format version number	7	7
Detector	ACIS-456789	ACIS-456789	Obspar file type	PREDICTED	ACTUAL
Grating	HETG	HETG	Obspar update status	NONE	UPDATED
Data mode	FAINT	FAINT	Number of optional ACIS chips dropped	0	0
Observation mode	POINTING	POINTING	On-chip summing requested	N	N
[deg] Pointing RA	148.820945	148.891277599465	Subarray requested	NONE	NONE
[deg] Pointing Dec	69.052875	69.06348482089713	Alternating exposures requested	N	N
[deg] Pointing Roll	352.003941	352.0948920887002	[s] Primary exposure time	0.000000	3.2
[mm] SIM focus pos	-0.684267	-0.6828225247311905			
[mm] SIM defocus	0	0.001444936568705701			
[mm] SIM translation stage pos	-190.132523	-190.1400660498719			
[mm] SIM translation stage offset	0	0.00754346686406393			
[s] Observation start time (MET)	271787787.184000	271786546.79186			
Observation start date	2006-08-12T16:35:22	2006-08-12T16:15:46			
[s] Observation end time (MET)	271802787.184000	271803512.08015			
Observation end date	2006-08-12T20:45:22	2006-08-12T20:58:32			
Read mode	TIMED	TIMED			

2.3 Aspect



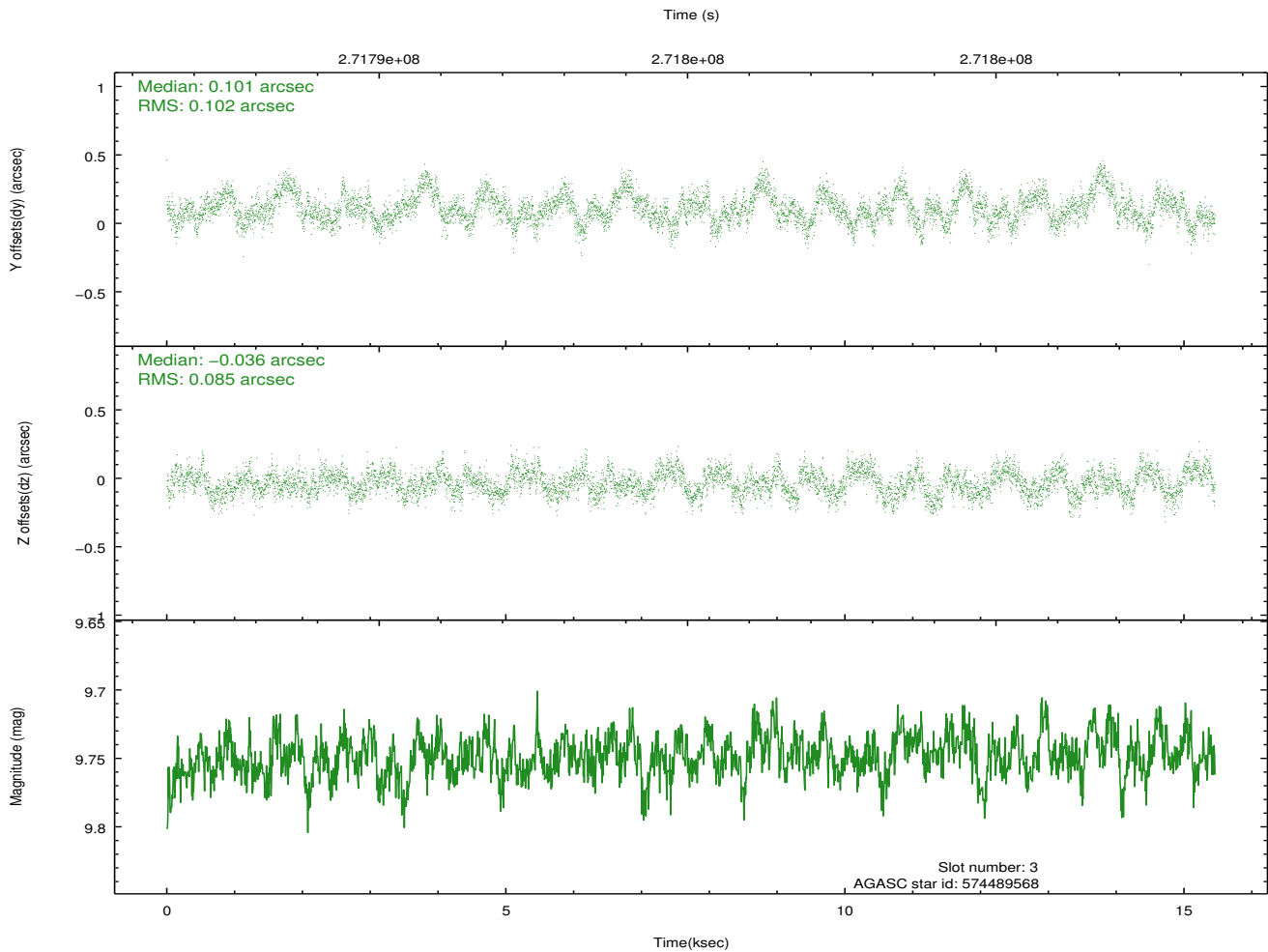
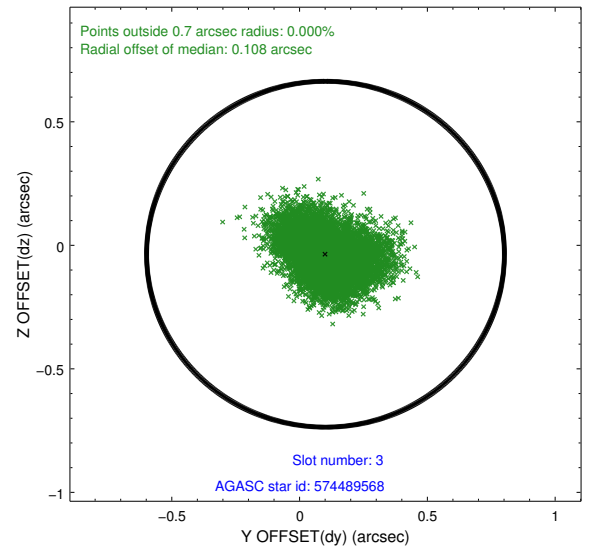
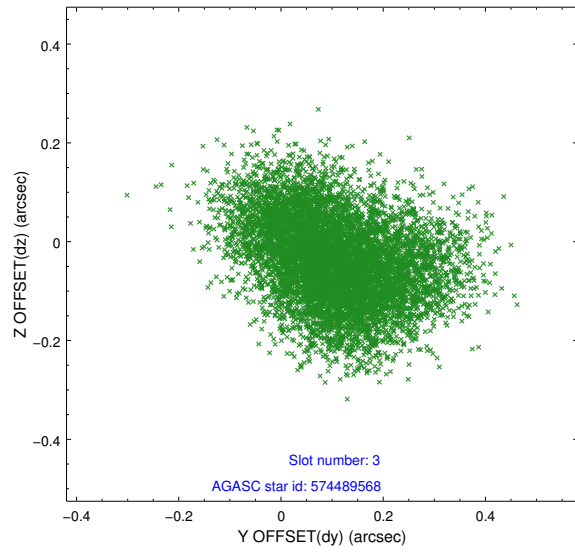


Slot Statistics

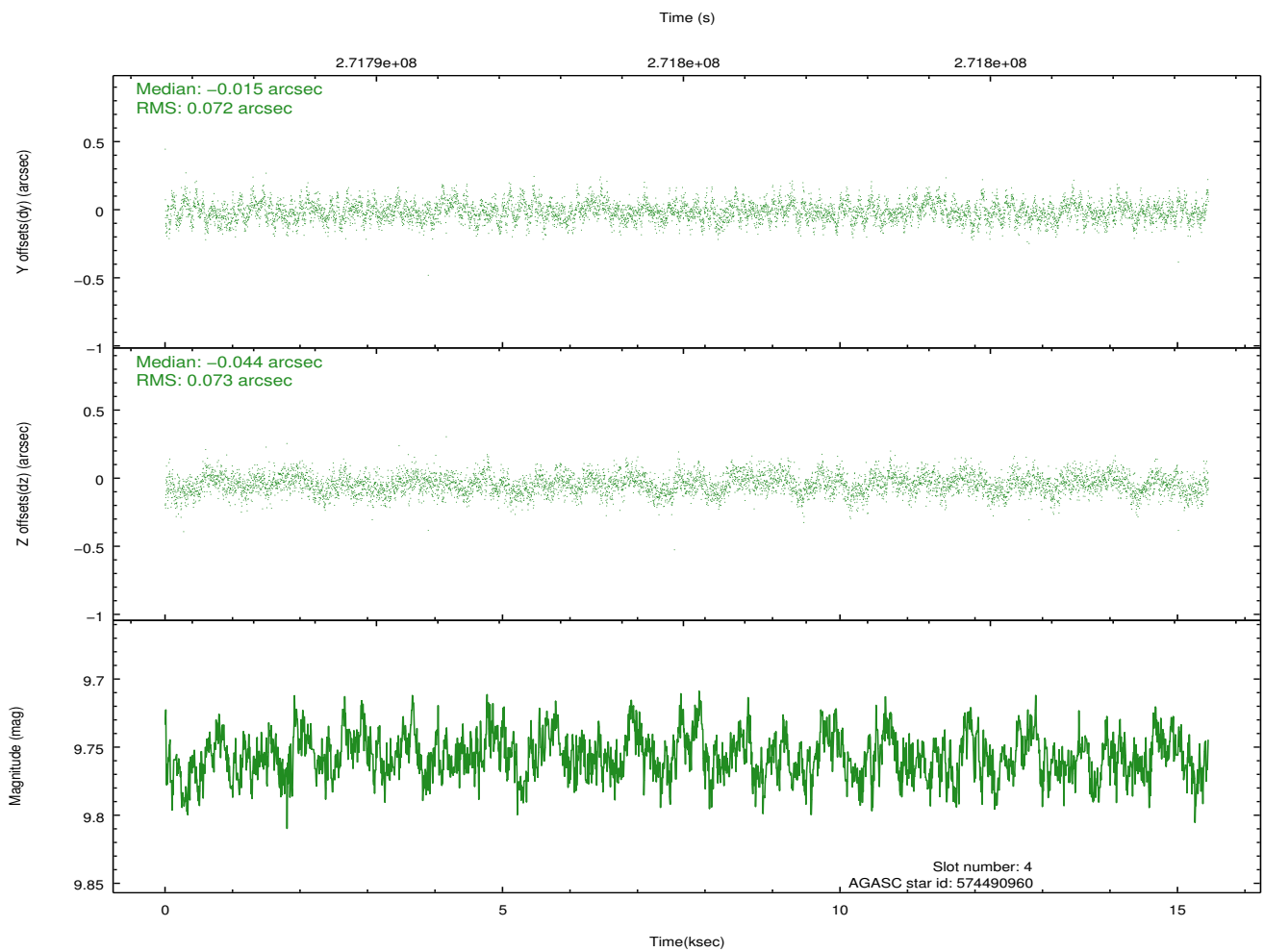
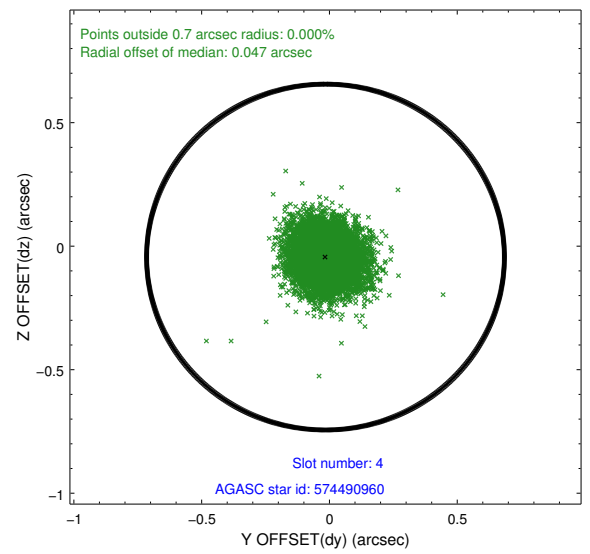
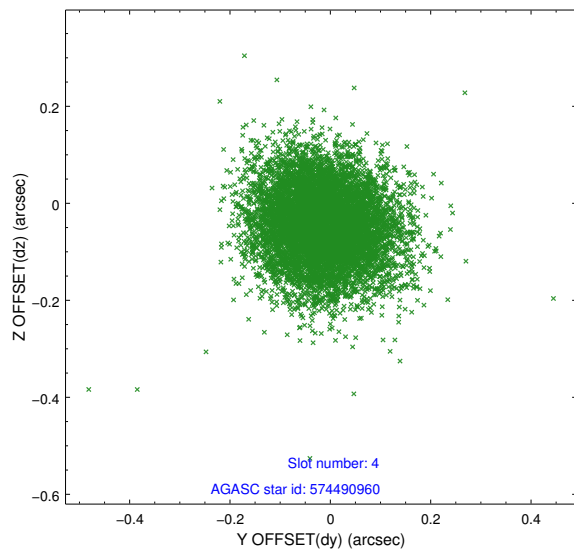
slot	status	id	mag	n_pts	med_dy	med_dz	dr1	dr2	ra	dec	mean_y	mean_z
0	FID	ACIS-S-2	7.11	3770	-0.012	-0.043	0.011	0.025	0.000000	0.000000	-761.67	-1733.87
1	FID	ACIS-S-4	7.20	3770	0.126	0.017	0.006	0.010	0.000000	0.000000	2151.63	174.35
2	FID	ACIS-S-5	7.23	3770	-0.144	0.034	0.010	0.022	0.000000	0.000000	-1814.26	168.39
3	GUIDE	574489568	9.75	7521	0.101	-0.036	0.143	0.228	147.223974	69.438157	-2195.85	1118.82
4	GUIDE	574490960	9.76	7489	-0.015	-0.044	0.109	0.176	148.185918	69.658768	-1091.42	2053.62
5	GUIDE	574491280	9.33	7533	-0.035	0.007	0.131	0.203	148.611567	69.450135	-461.93	1379.57
6	GUIDE	574498696	9.03	7537	-0.012	0.202	0.087	0.142	146.881317	68.486979	-2257.59	-2333.07
7	GUIDE	574491872	9.27	7534	-0.046	-0.132	0.108	0.173	147.207613	69.765453	-2350.02	2284.71

2.4 Star Slots

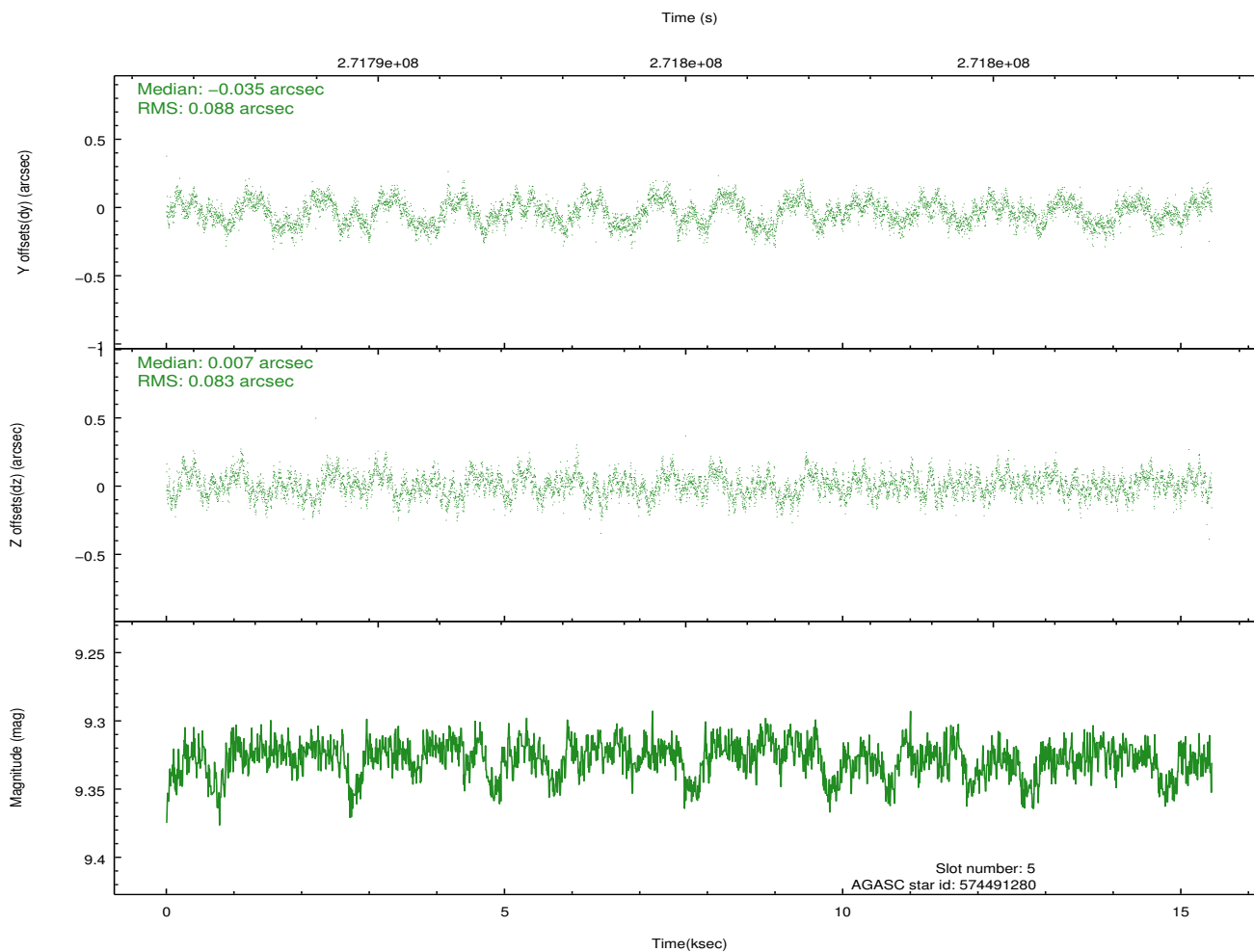
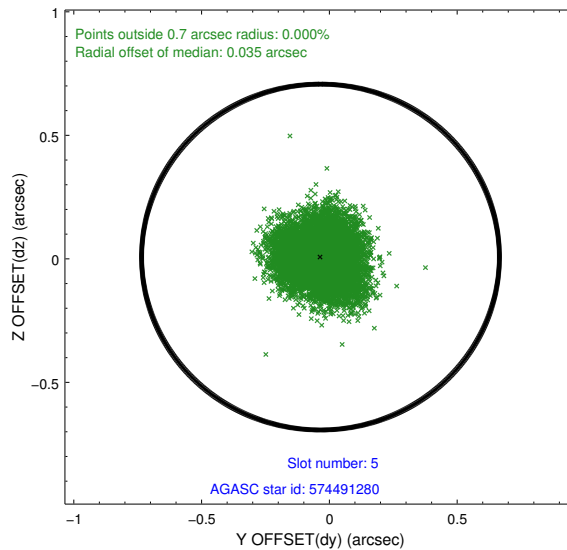
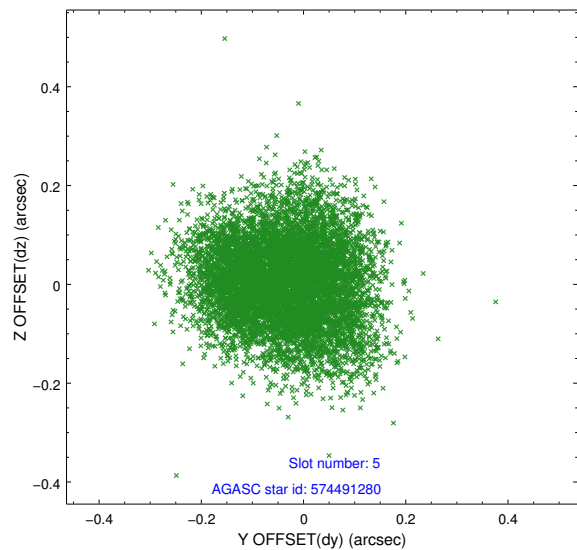
2.4.1 Slot 3



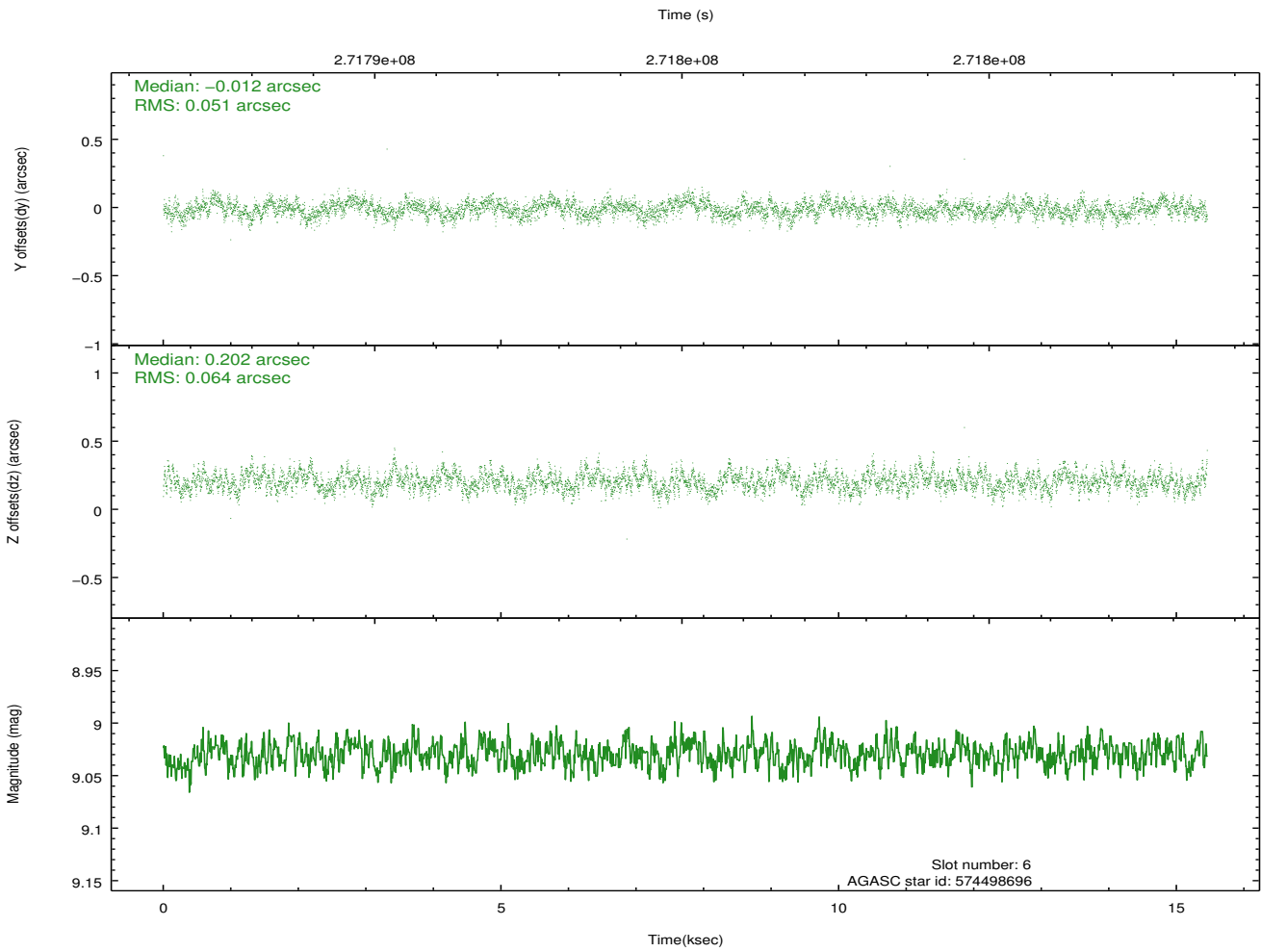
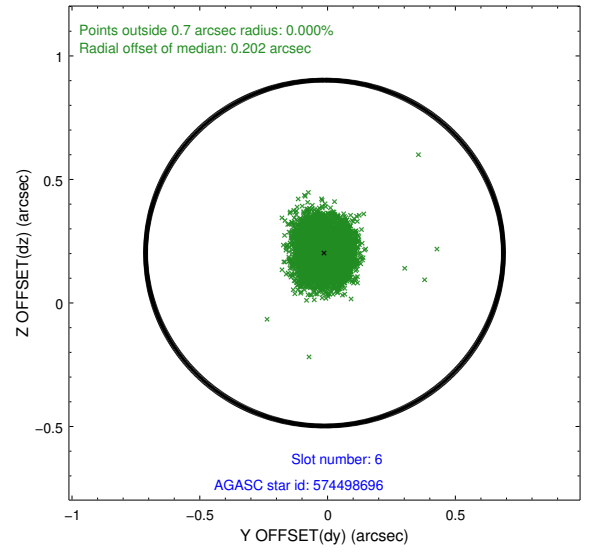
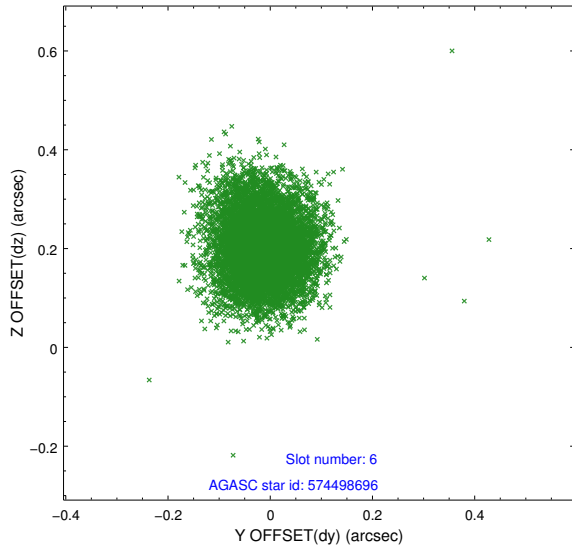
2.4.2 Slot 4



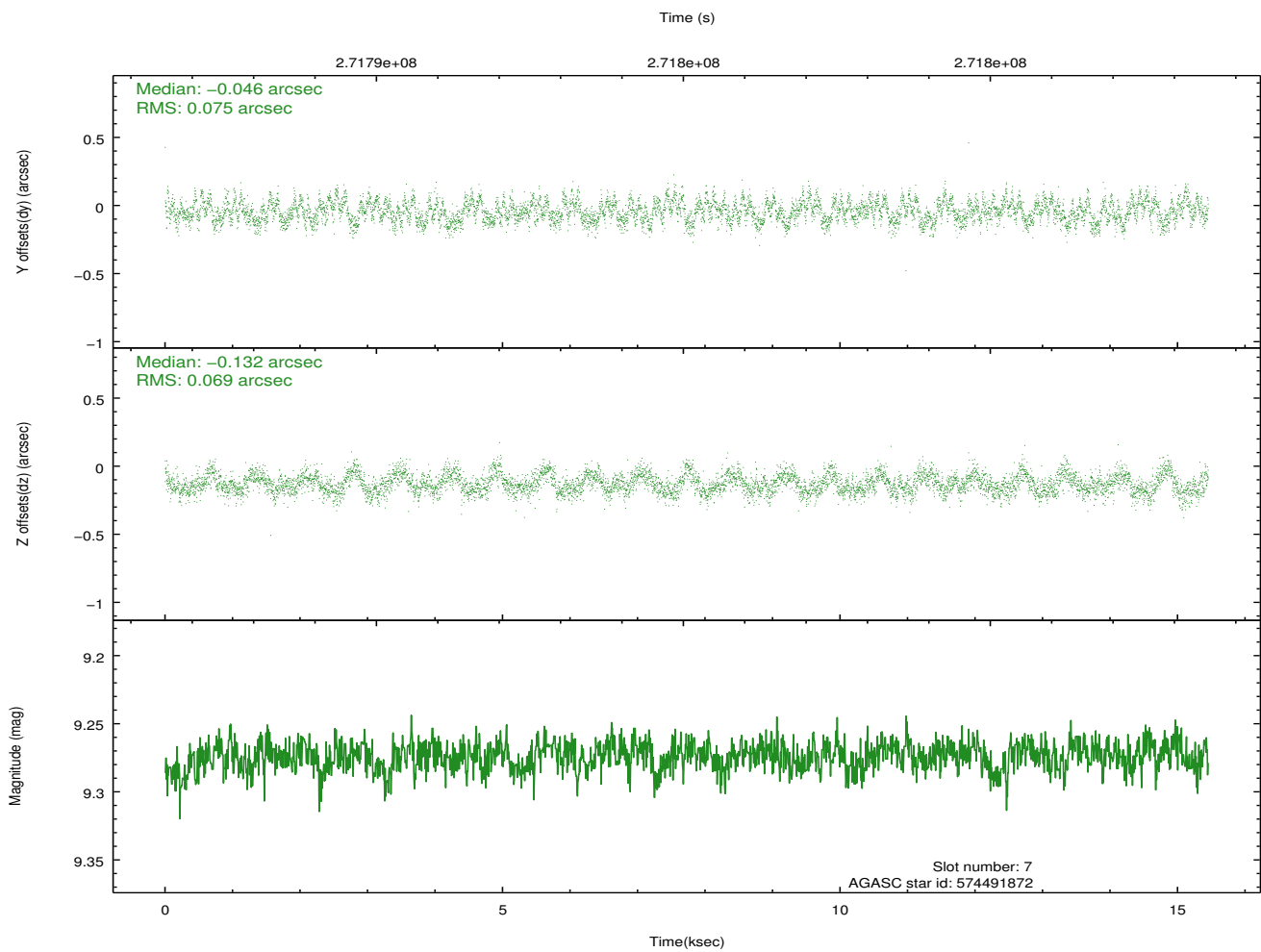
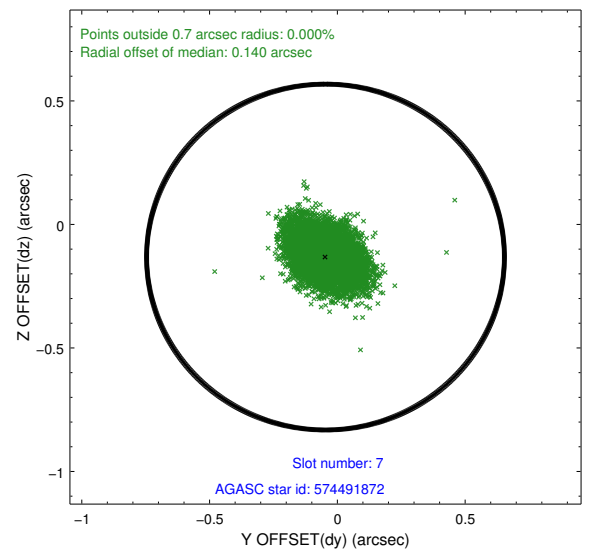
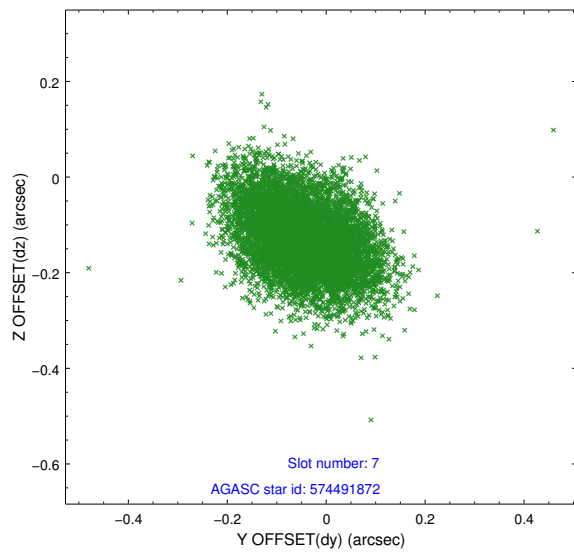
2.4.3 Slot 5



2.4.4 Slot 6

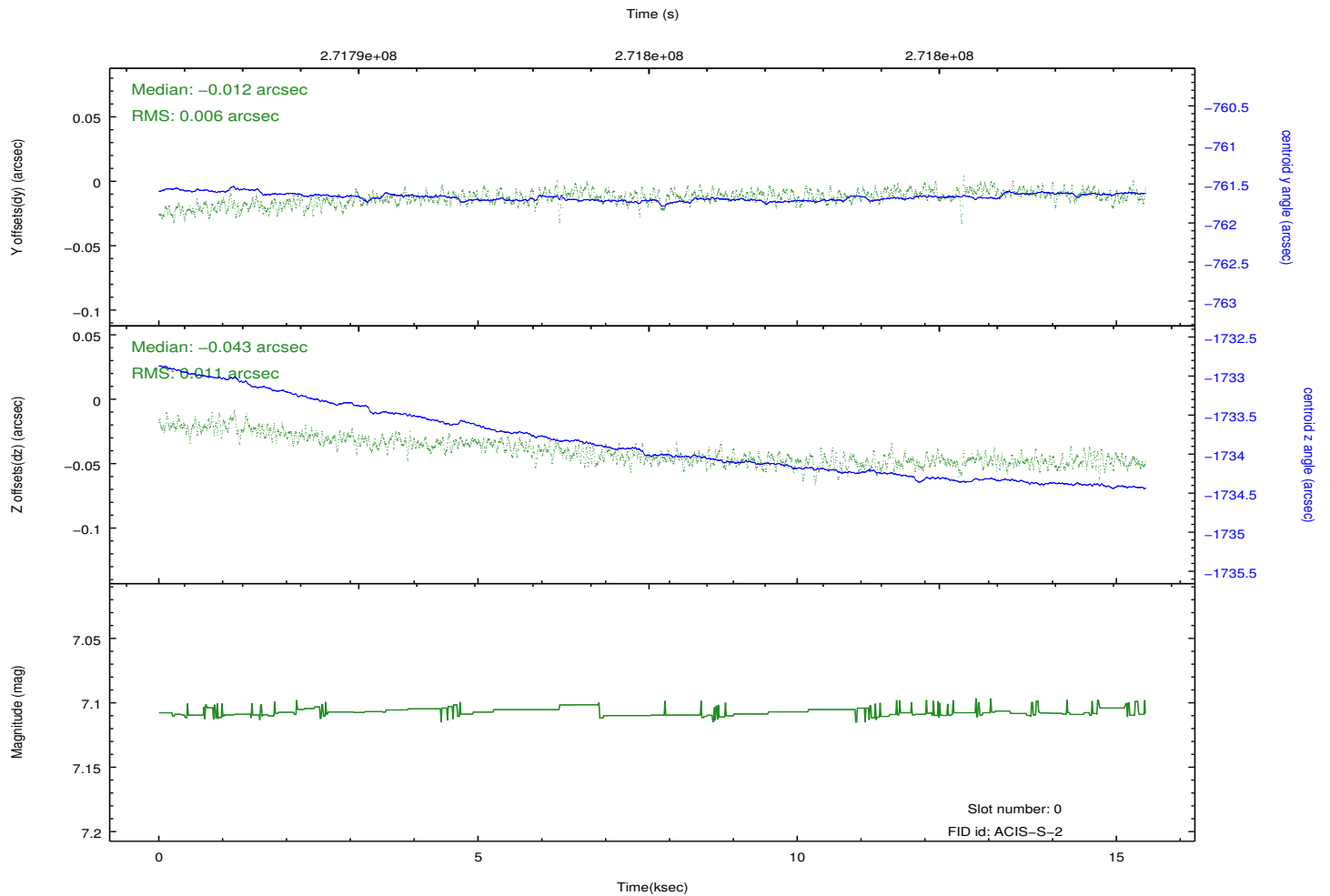
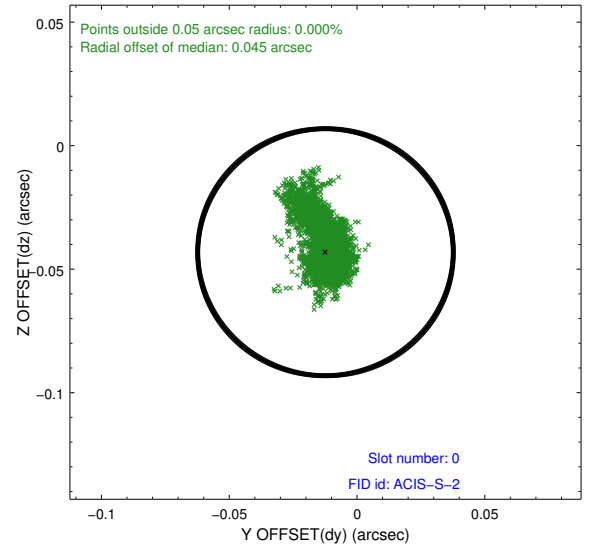
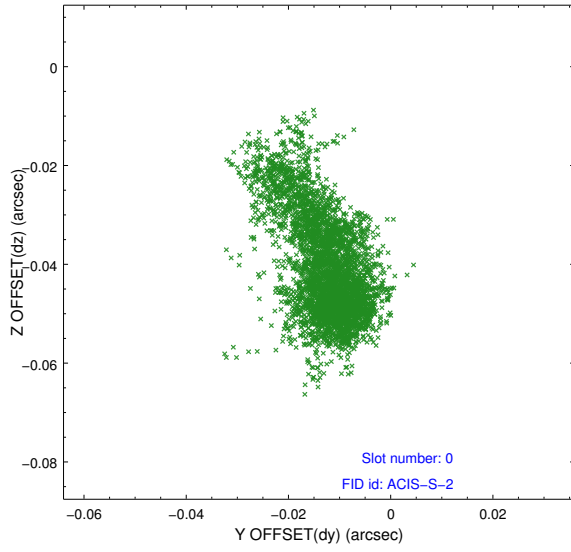


2.4.5 Slot 7

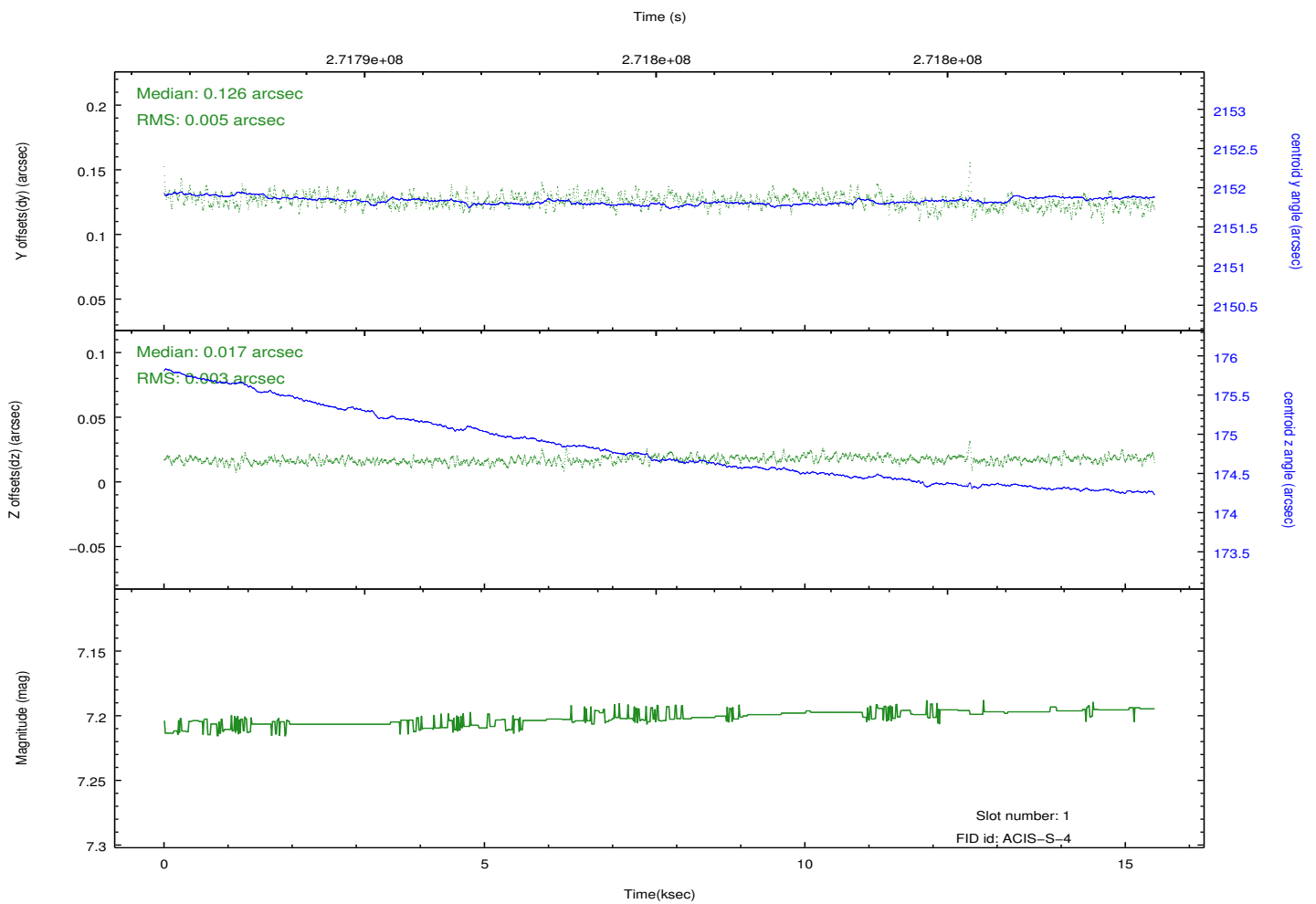
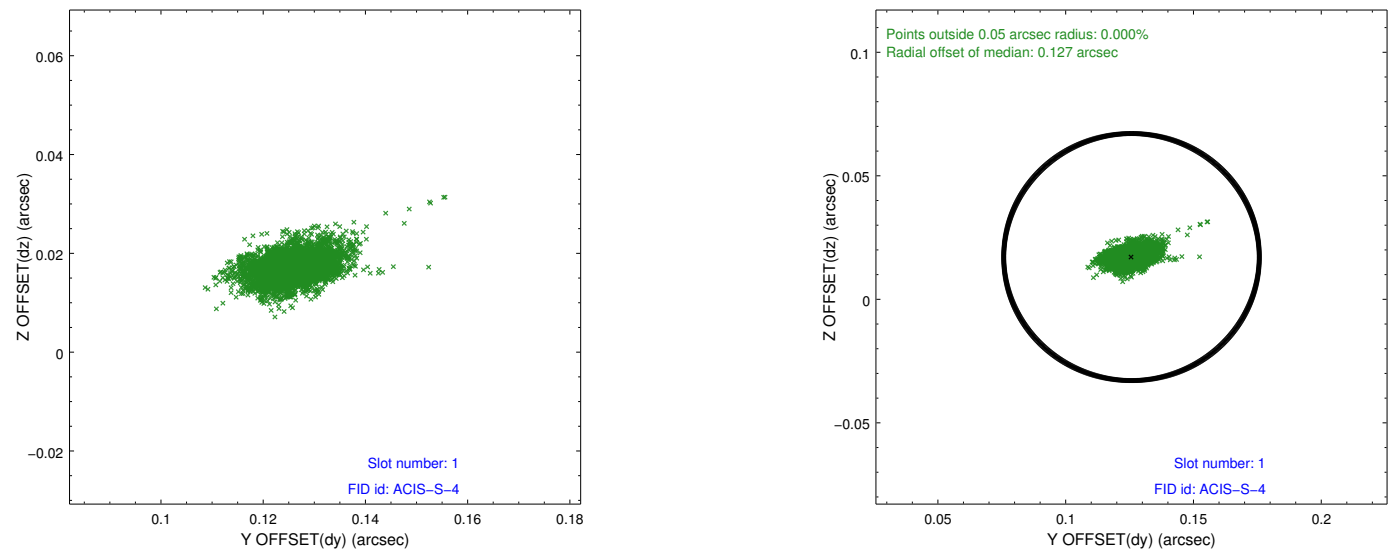


2.5 FID Slots

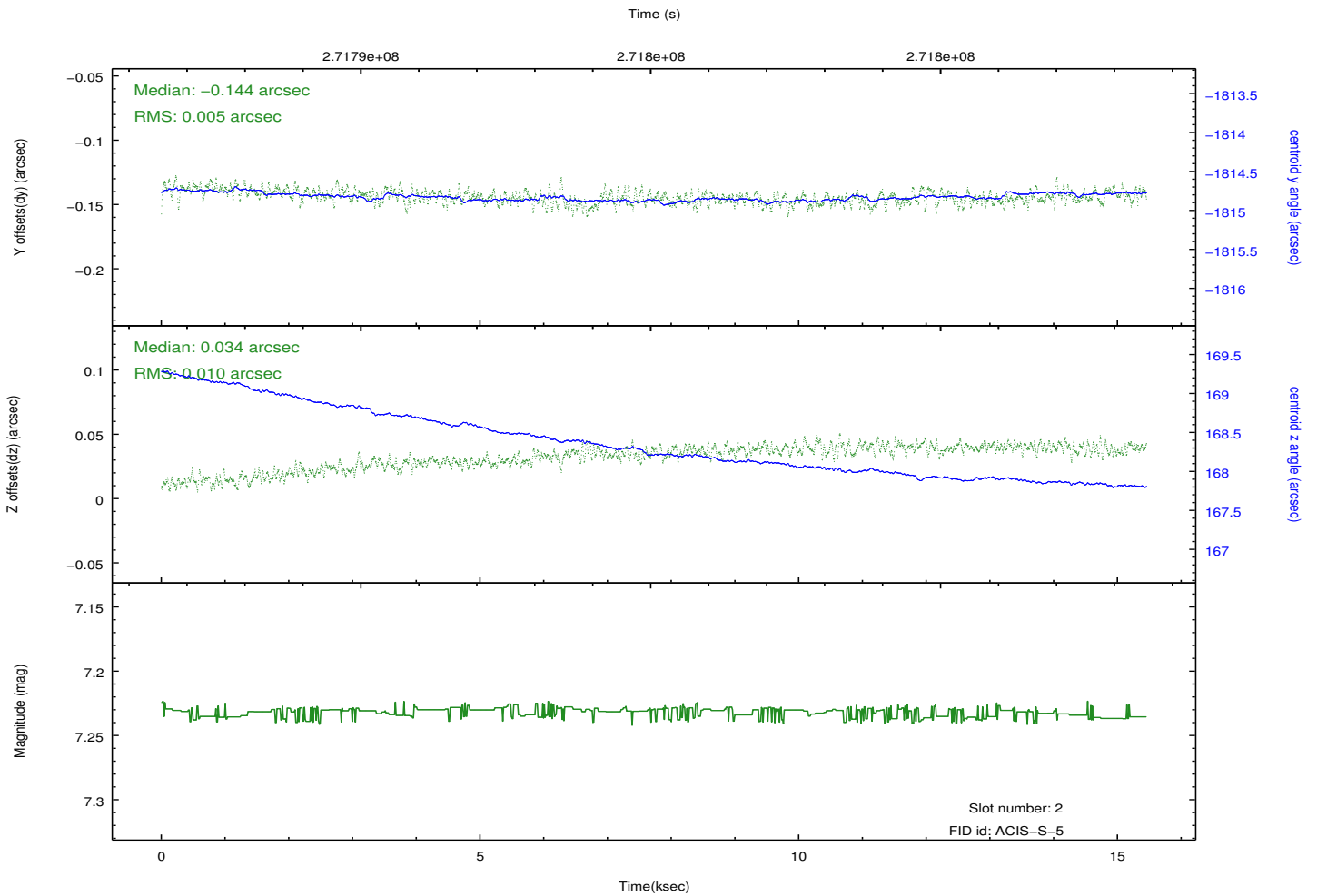
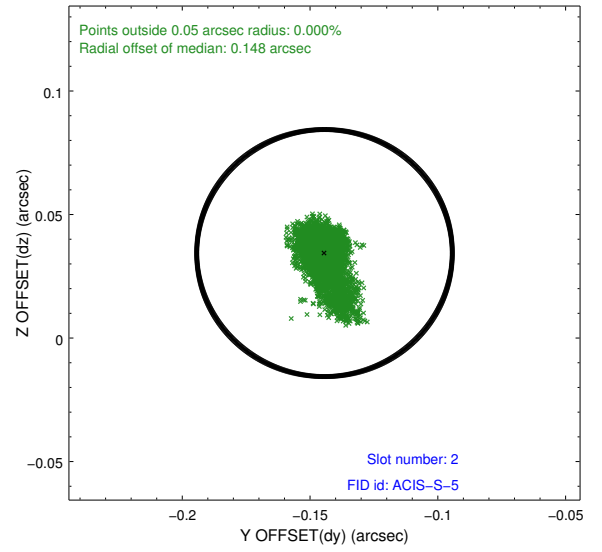
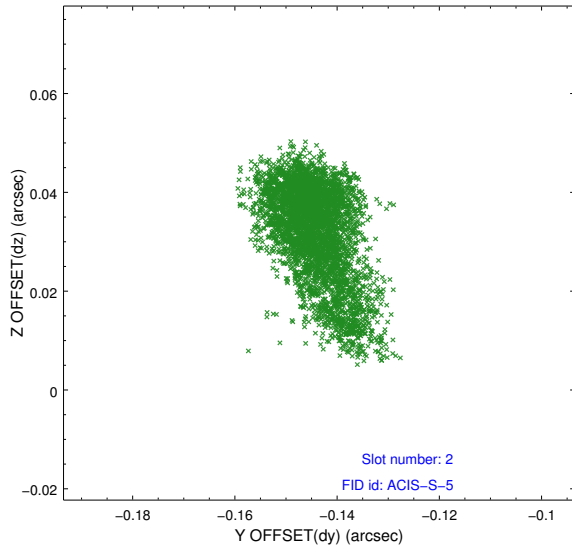
2.5.1 Slot 0



2.5.2 Slot 1



2.5.3 Slot 2

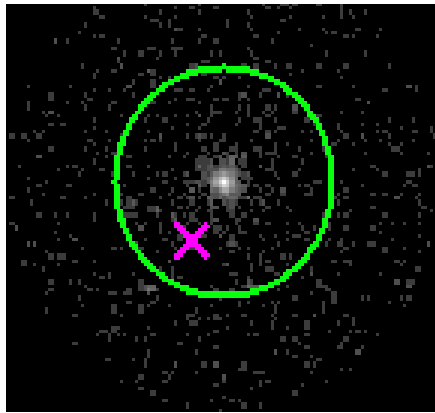


3 Gratings

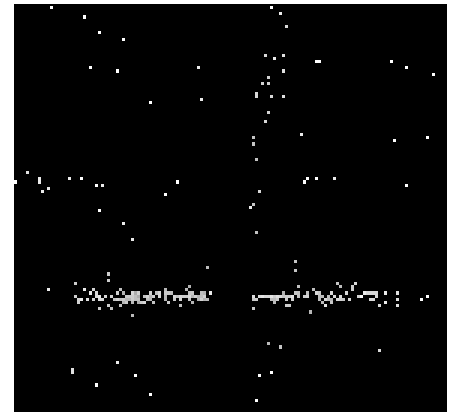
3.1 HEG Arm



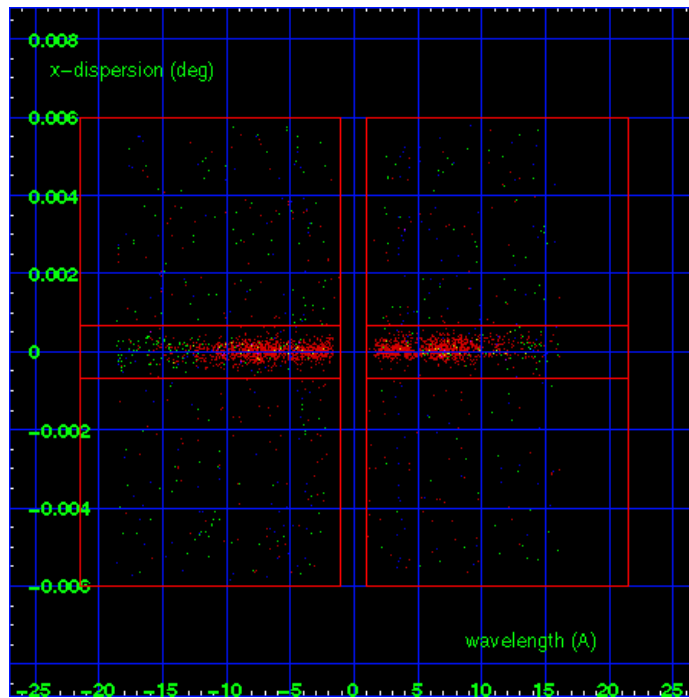
HEG Order Sort 123



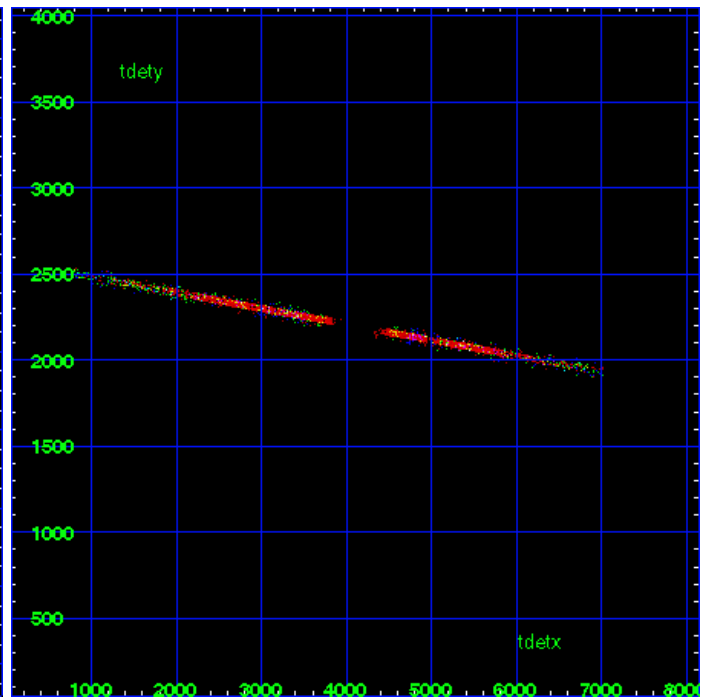
HEG Zero Order



HEG Order Sort ALL

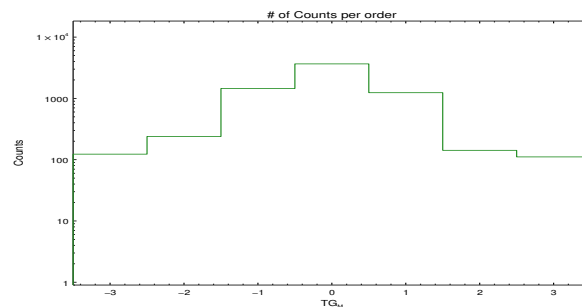


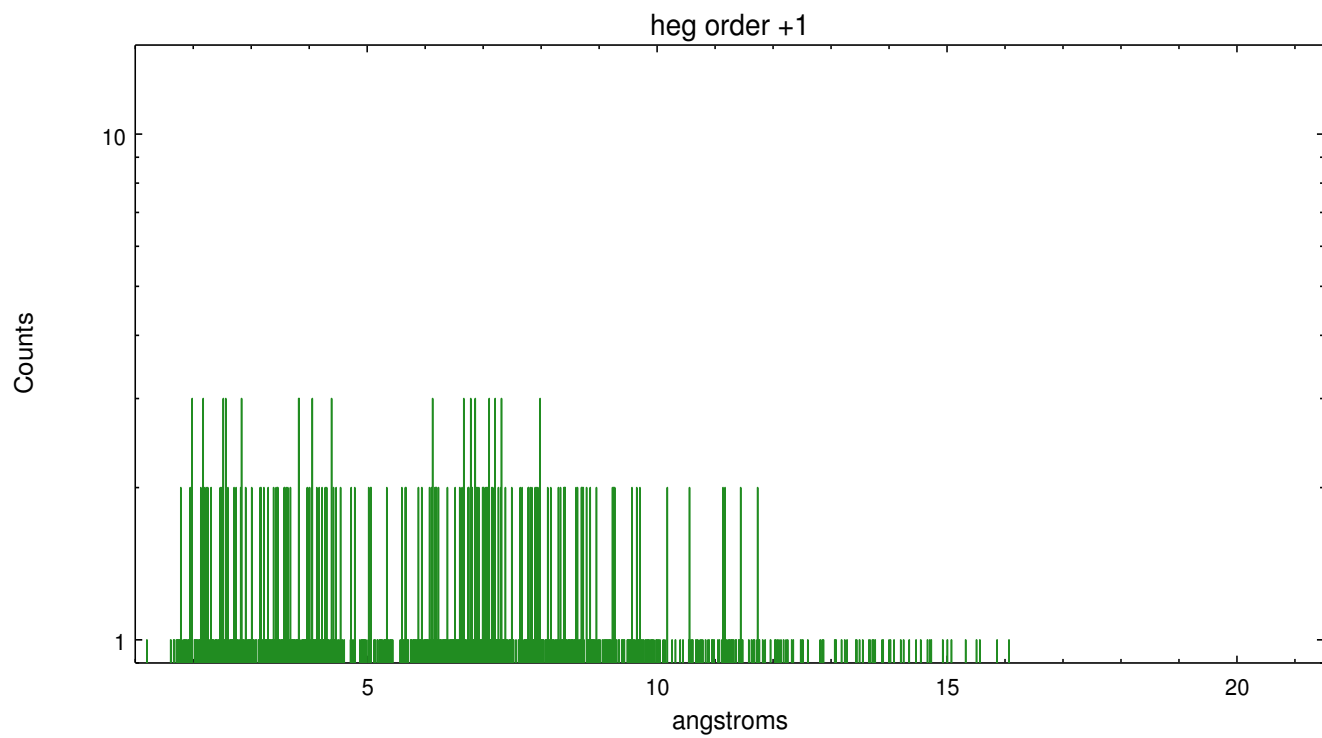
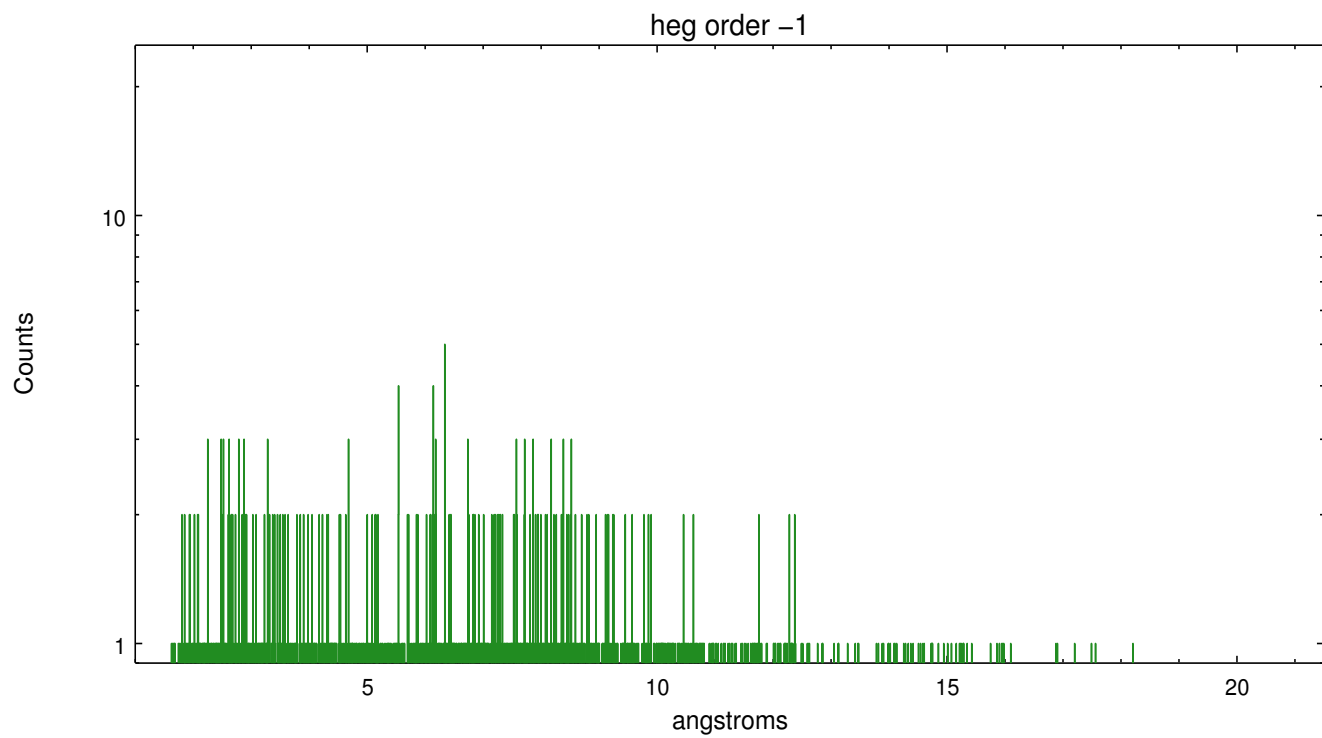
Spot Image HEG



Full Detector HEG

	order -3	order -2	order -1	order 0	order 1	order 2	order 3
Events	123	239	1450	3657	1239	142	111

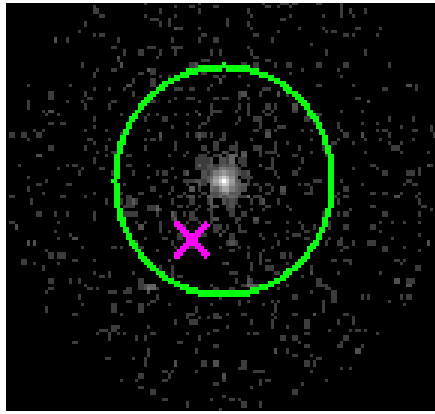




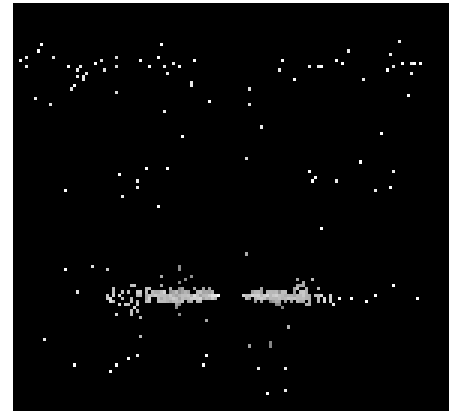
3.2 MEG Arm



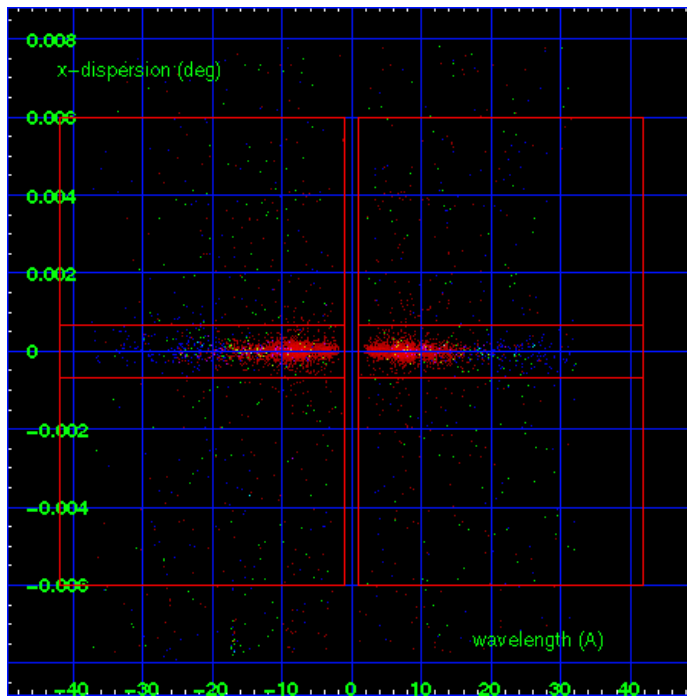
MEG Order Sort 123



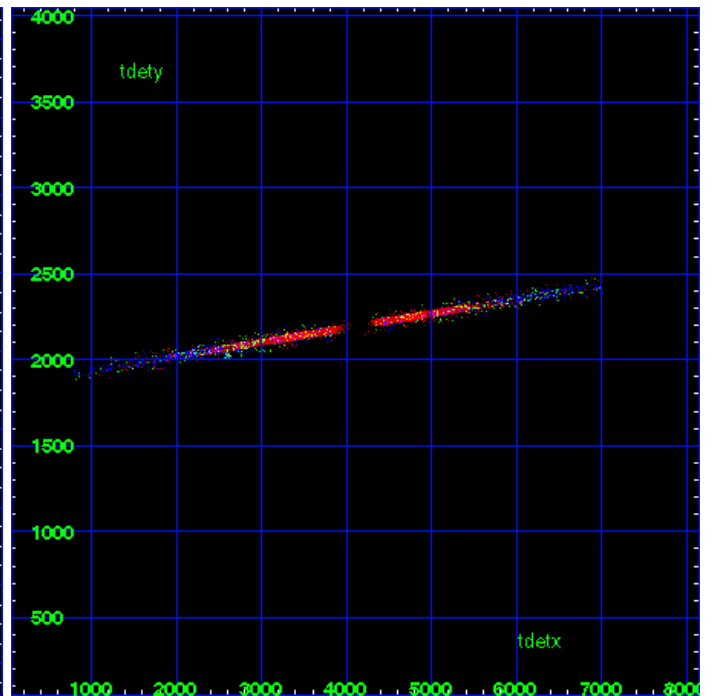
MEG Zero Order



MEG Order Sort ALL

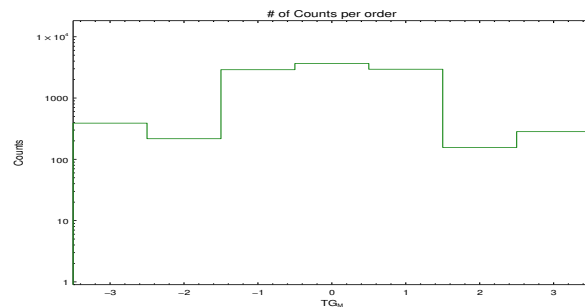


Spot Image MEG

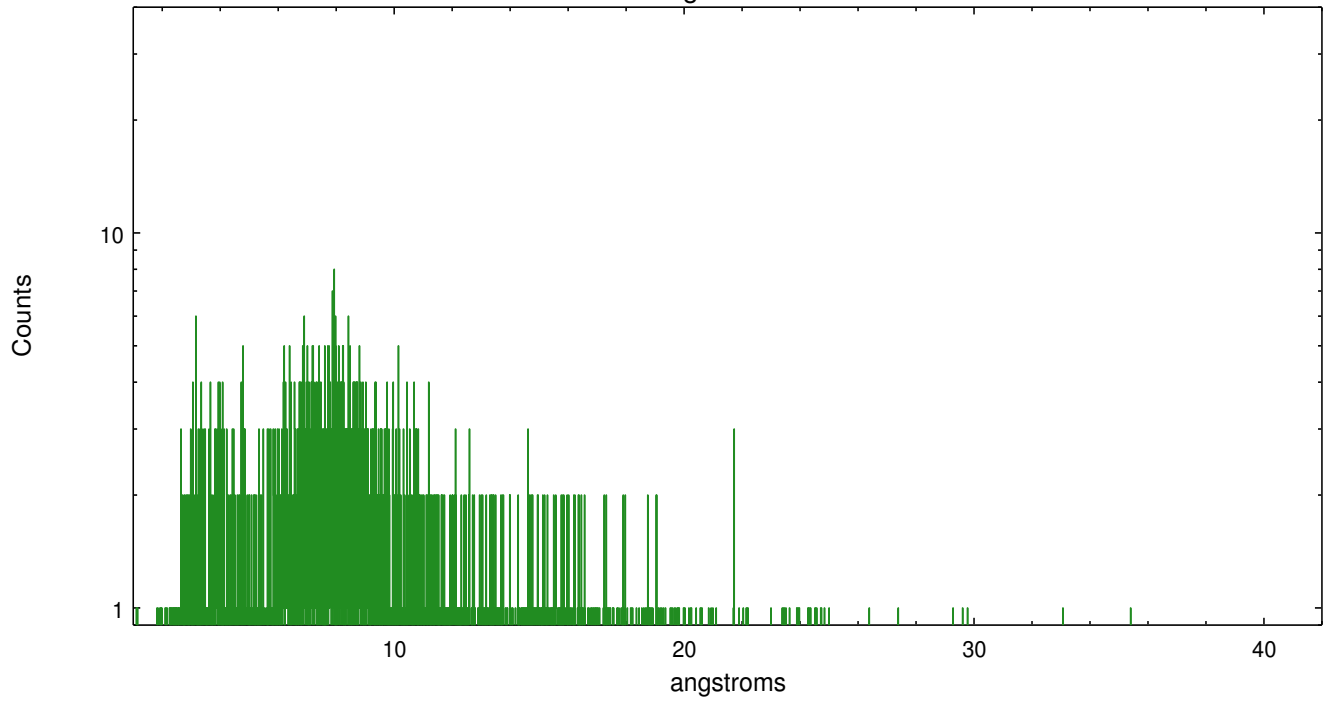


Full Detector MEG

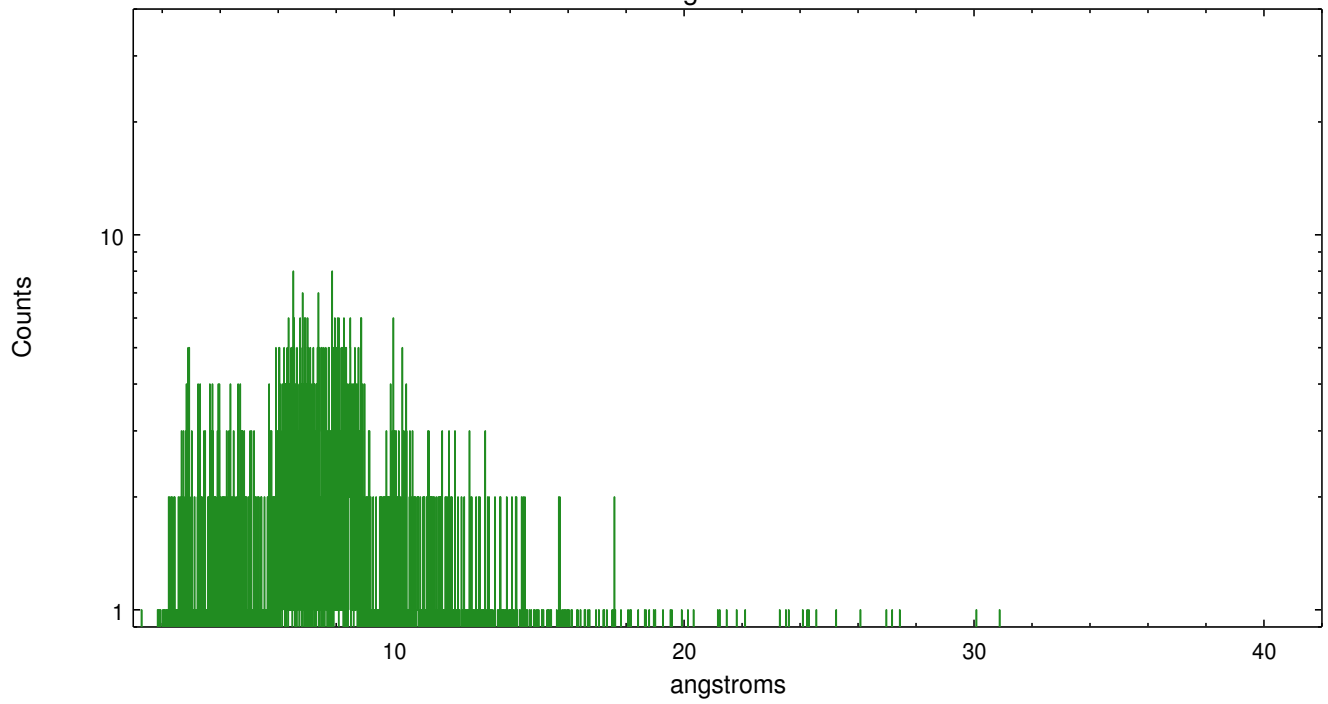
	order -3	order -2	order -1	order 0	order 1	order 2	order 3
Events	389	217	2900	3657	2948	156	283



meg order -1



meg order +1



A Summary

A.1 Status

V&V Scientist	Joy Nichols
V&V Date (YYYY-MM-DD)	2012.04.09
V&V Edition	1
V&V Disposition and Status	OK
V&V Charge Time	14.9535999

A.2 Comments

Possible low-level contamination of one of the MEG -1 background regions (near ~ 16 A) by an off-axis source. Count rate about twice that of most other M81* observations.