

# V&V Reference Report

## L2 ASCDS Version : 8.4.3.1

Observation 7231 - L2 Version 2  
Chandra X-Ray Center

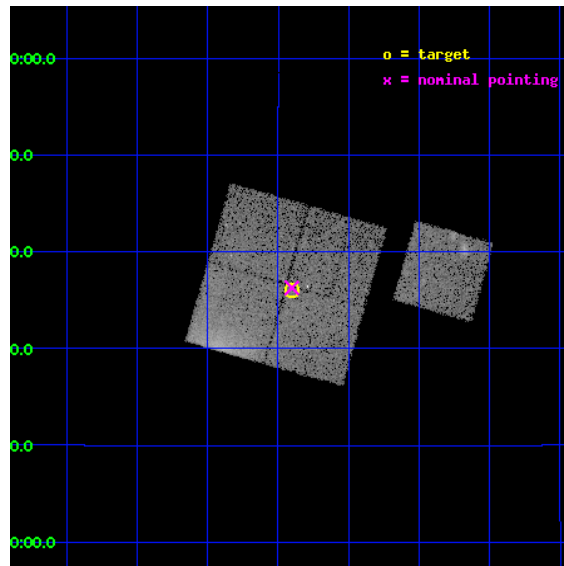
L2 Processing Date : Apr 6 2012

## Contents

<b>1</b>	<b>Front</b>	<b>2</b>
<b>2</b>	<b>OBI</b>	<b>3</b>
2.1	OBI . . . . .	3
2.1.1	Images . . . . .	3
2.1.2	Bias . . . . .	3
2.1.3	Parameters . . . . .	4
2.1.4	Events . . . . .	4
2.2	Compared Parameters . . . . .	5
2.3	Aspect . . . . .	6
2.4	Star Slots . . . . .	9
2.4.1	Slot 3 . . . . .	9
2.4.2	Slot 4 . . . . .	10
2.4.3	Slot 5 . . . . .	11
2.4.4	Slot 6 . . . . .	12
2.4.5	Slot 7 . . . . .	13
2.5	FID Slots . . . . .	14
2.5.1	Slot 0 . . . . .	14
2.5.2	Slot 1 . . . . .	15
2.5.3	Slot 2 . . . . .	16
<b>A</b>	<b>Summary</b>	<b>17</b>
A.1	Status . . . . .	17
A.2	Comments . . . . .	17

# 1 Front

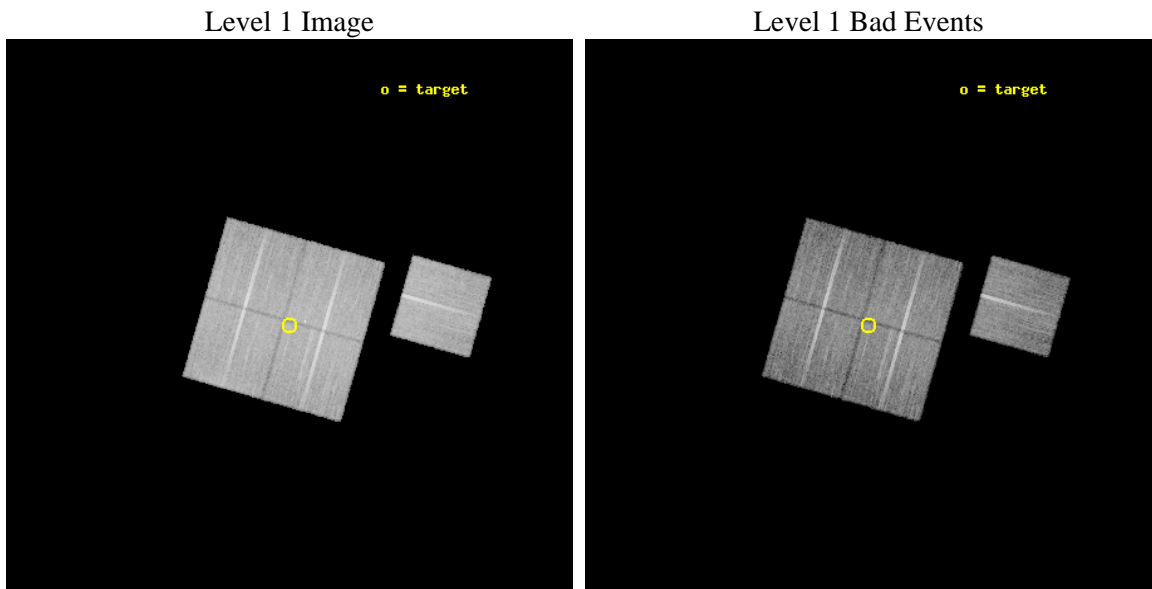
seq_num	800561	Sequence number
obs_id	7231	Observation id
title	Temperature profiles of relaxed galaxy clusters	Proposal title
observer	Dr Stephen Murray	Principal investigator
object	A478_OFFSET1	Source name
dtcycle	0	&#160
cycle	P	events from which exps? Prim/Second/Both
ra_targ	63.225	Observer's specified target RA [deg]
dec_targ	10.6	Observer's specified target Dec [deg]
ra_nom	63.225568835652	Nominal RA [deg]
dec_nom	10.604647531533	Nominal Dec [deg]
roll_nom	105.92293535652	Nominal Roll [deg]
revision	2	Processing version of data
ontime	17544.855658531	Sum of GTIs [s]
livetime	17315.619203018	Livetime [s]
ontime0	17547.873508811	Sum of GTIs [s]
ontime1	17544.773588479	Sum of GTIs [s]
ontime2	17547.955588818	Sum of GTIs [s]
ontime3	17544.855658531	Sum of GTIs [s]
ontime6	17541.550628006	Sum of GTIs [s]
l2events	67210	Number of level 2 events



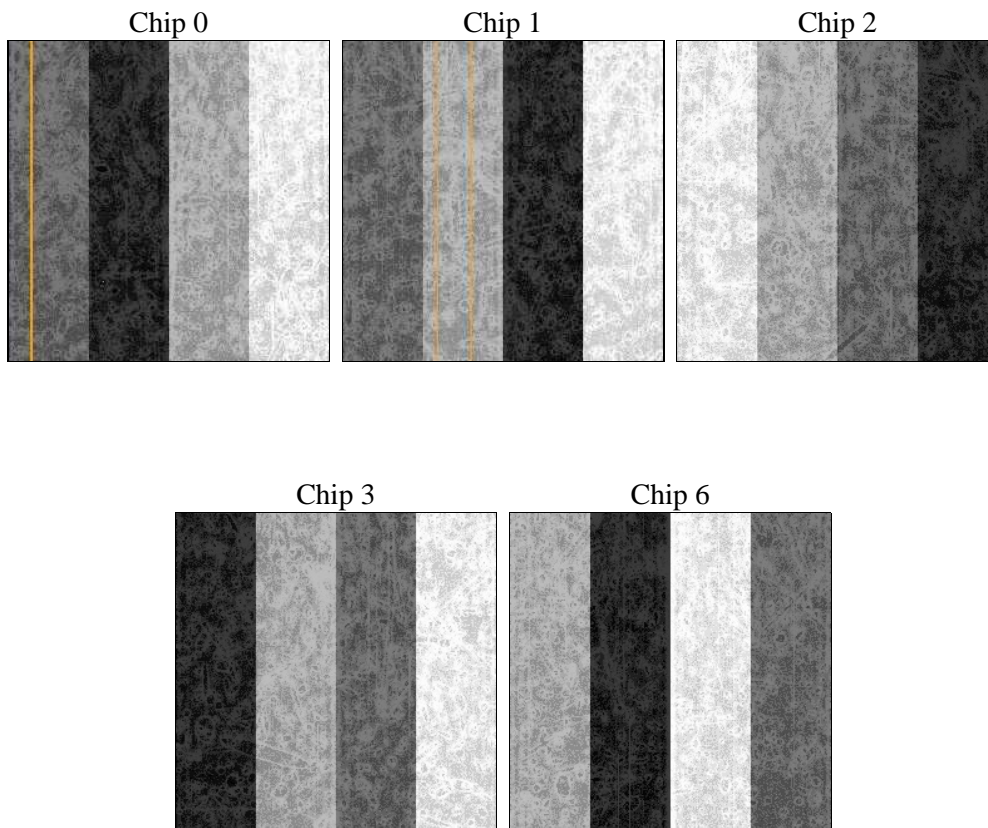
## 2 OBI

### 2.1 OBI

#### 2.1.1 Images



#### 2.1.2 Bias



### 2.1.3 Parameters

obi_num	0	Obi number	sched_exp_time	17453.000000	[s] Scheduled observation exposure time
ascdsver	8.4.3.1	Processing system revision	ontime	17544.855658531	Sum of GTIs [s]
caldbver	4.4.9	&#160	ontime0	17547.873508811	Sum of GTIs [s]
date	2012-04-06T03:14:11	Date and time of file creation	ontime1	17544.773588479	Sum of GTIs [s]
revision	2	Processing version of data	ontime2	17547.955588818	Sum of GTIs [s]
			ontime3	17544.855658531	Sum of GTIs [s]
			ontime6	17541.550628006	Sum of GTIs [s]
			l1events	675801	Number of level 1 events

### 2.1.4 Events

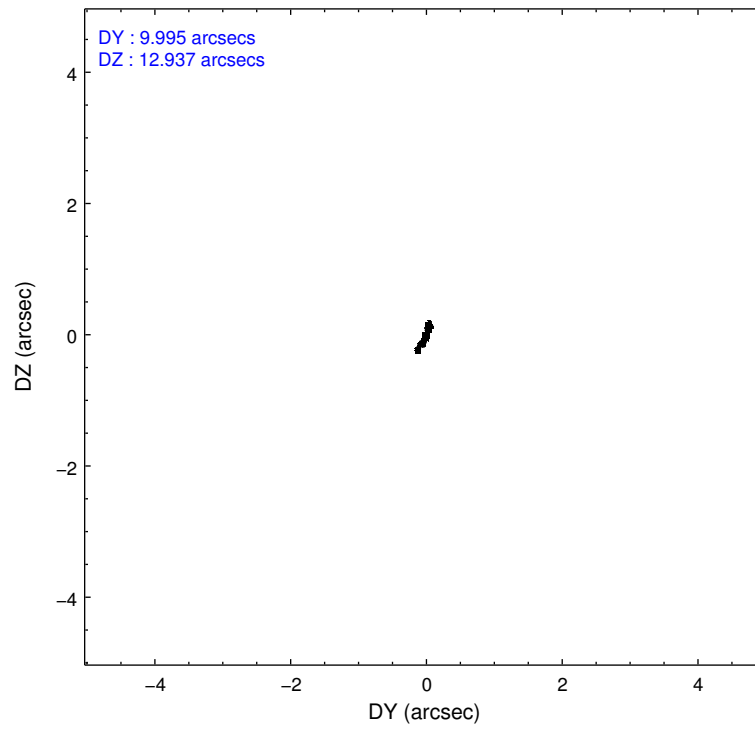
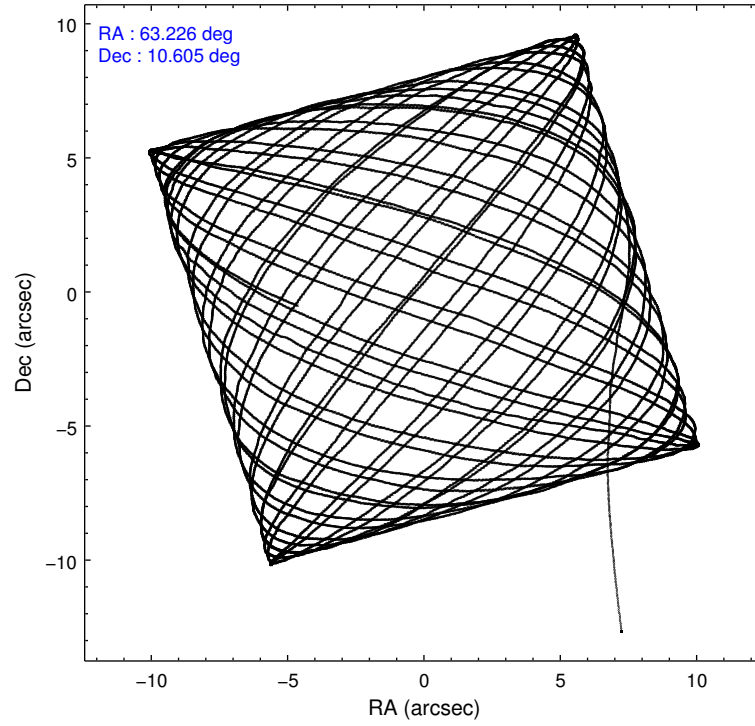
	ccd 0	ccd 1	ccd 2	ccd 3	ccd 6
level 1 events	125906	137868	140669	135488	135870
rejected events	112574	112352	127597	121698	122263
rejected %	89%	81%	90%	89%	89%

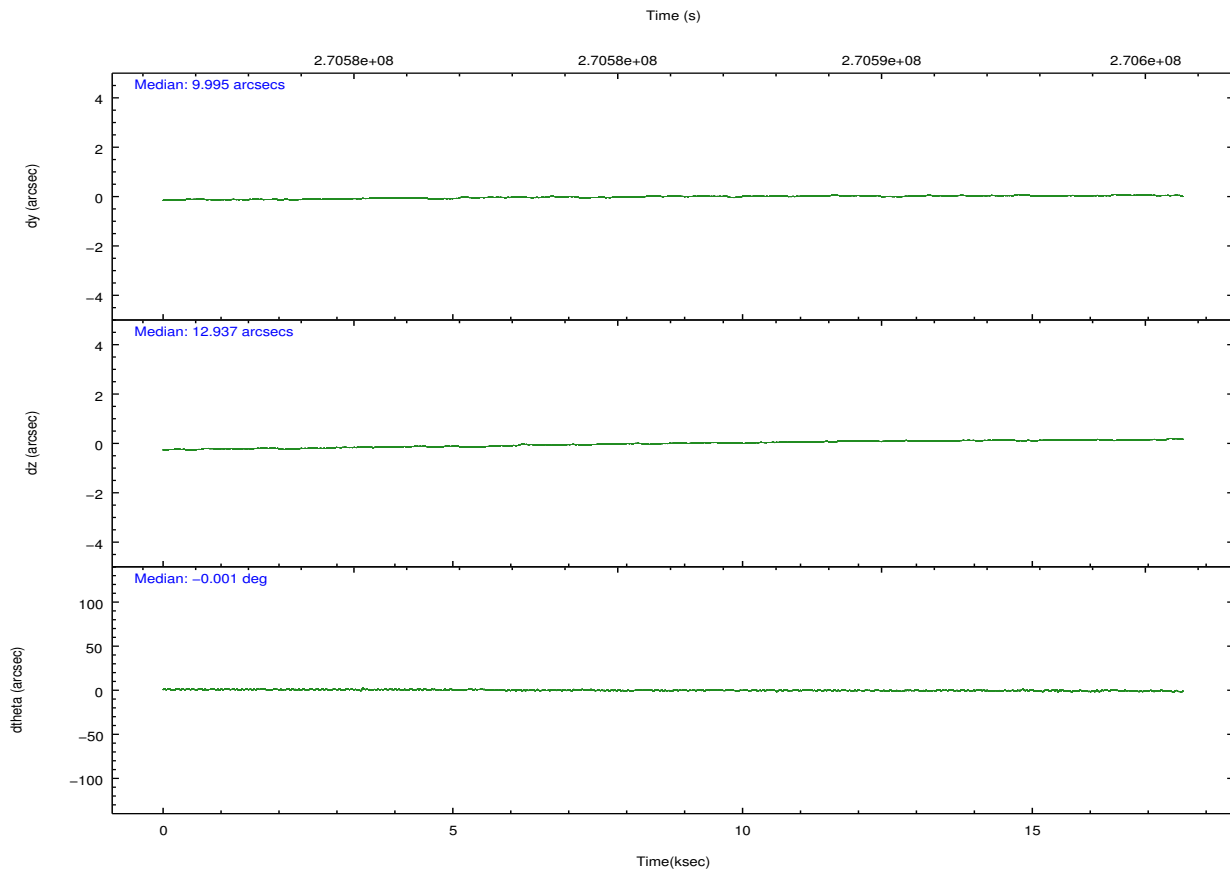
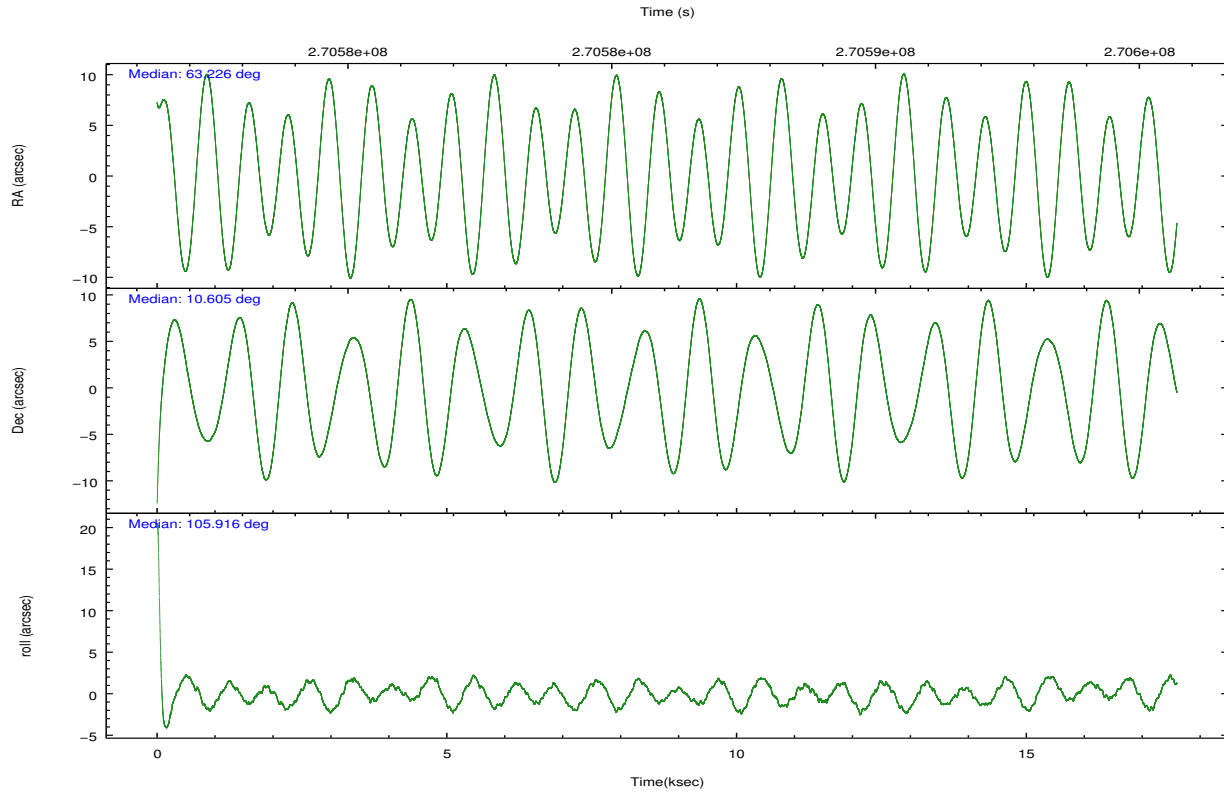
	ccd 0	ccd 1	ccd 2	ccd 3	ccd 6
grade 0 events	4796	13600	4822	5485	4894
	3%	9%	3%	4%	3%
grade 1 events	59	100	86	85	58
	0%	0%	0%	0%	0%
grade 2 events	3148	4584	3068	2897	2948
	2%	3%	2%	2%	2%
grade 3 events	1568	2038	1328	1465	1507
	1%	1%	0%	1%	1%
grade 4 events	1421	1967	1425	1481	1486
	1%	1%	1%	1%	1%
grade 5 events	4589	5087	4319	5379	5216
	3%	3%	3%	3%	3%
grade 6 events	2401	3331	2432	2463	2774
	1%	2%	1%	1%	2%
grade 7 events	107924	107161	123189	116233	116987
	85%	77%	87%	85%	86%

## 2.2 Compared Parameters

Parameter	Planned	Actual	Parameter	Planned	Actual
Instrument	ACIS	ACIS	Obspar format version number	7	7
Detector	ACIS-01236	ACIS-01236	Obspar file type	PREDICTED	ACTUAL
Grating	NONE	NONE	Obspar update status	NONE	UPDATED
Data mode	VFAINT	VFAINT	Number of optional ACIS chips dropped	0	0
Observation mode	POINTING	POINTING	On-chip summing requested	N	N
[deg] Pointing RA	63.245669	63.2255688356522	Subarray requested	NONE	NONE
[deg] Pointing Dec	10.585627	10.60464753153314	Alternating exposures requested	N	N
[deg] Pointing Roll	105.710540	105.9229353565228	[s] Primary exposure time	0.000000	3.1
[mm] SIM focus pos	-0.782348	-0.7809083437167272			
[mm] SIM defocus	0	0.001439871863259334			
[mm] SIM translation stage pos	-233.592463	-233.5874344608287			
[mm] SIM translation stage offset	0	-0.005018542100998502			
[s] Observation start time (MET)	270577394.184000	270576434.8101			
Observation start date	2006-07-29T16:22:09	2006-07-29T16:07:14			
[s] Observation end time (MET)	270594847.184000	270596414.11104			
Observation end date	2006-07-29T21:13:02	2006-07-29T21:40:14			
Read mode	TIMED	TIMED			

## 2.3 Aspect



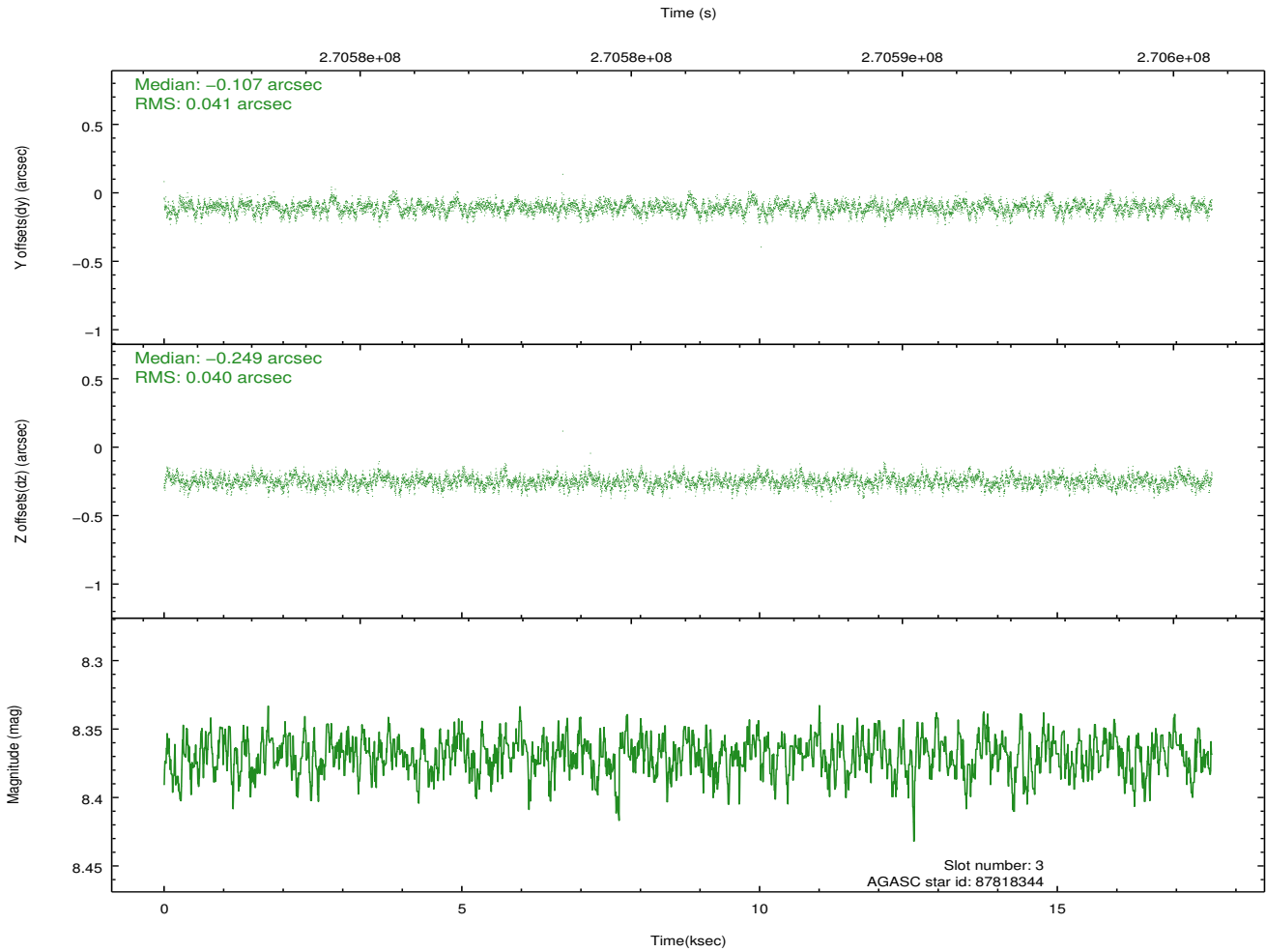
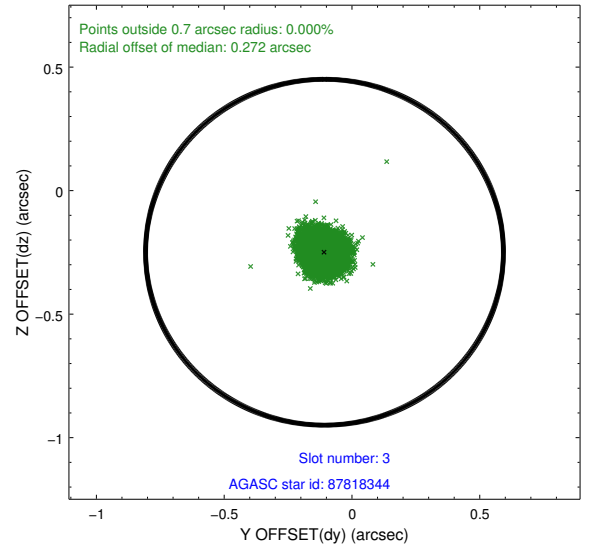
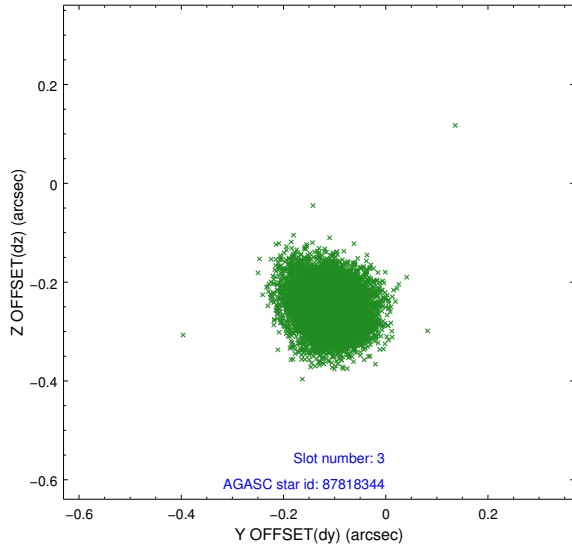


### Slot Statistics

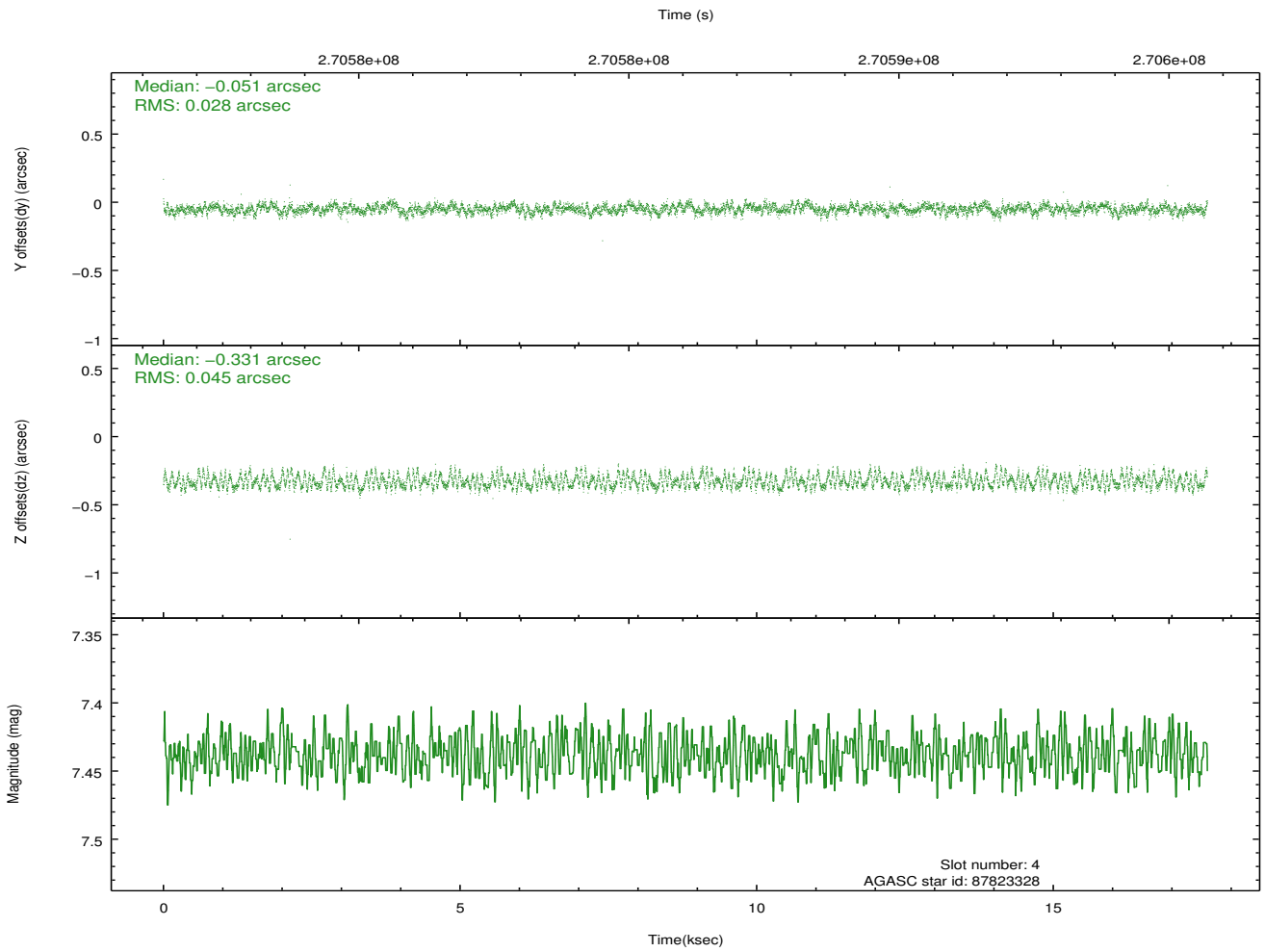
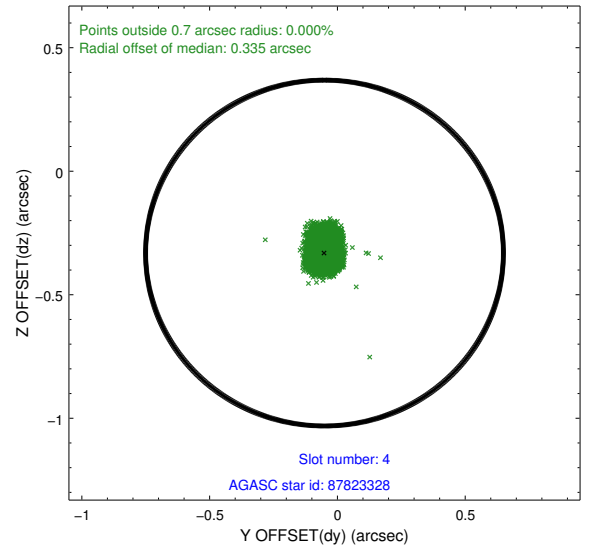
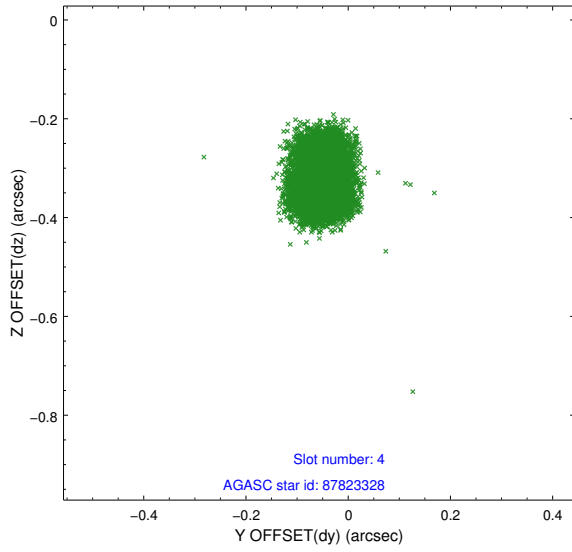
slot	status	id	mag	n_pts	med_dy	med_dz	dr1	dr2	ra	dec	mean_y	mean_z
0	FID	ACIS-I-1	7.24	4293	0.039	0.003	0.009	0.017	0.000000	0.000000	929.65	-836.47
1	FID	ACIS-I-5	7.23	4293	-0.198	0.050	0.007	0.012	0.000000	0.000000	-1818.54	1060.97
2	FID	ACIS-I-6	7.24	4292	0.068	0.018	0.008	0.013	0.000000	0.000000	394.99	1705.69
3	GUIDE	87818344	8.37	8585	-0.107	-0.249	0.061	0.100	62.599114	10.854229	1551.79	1938.03
4	GUIDE	87823328	7.44	8584	-0.051	-0.331	0.056	0.090	62.510071	10.846228	1610.05	2248.84
5	GUIDE	87953912	6.67	8586	0.207	0.182	0.074	0.139	63.394036	10.212467	-1435.23	-142.14
6	GUIDE	87954552	8.35	8582	-0.146	0.319	0.068	0.107	63.195345	11.171305	2077.49	-399.32
7	GUIDE	87955152	7.69	8582	0.087	0.077	0.056	0.089	63.504124	11.027236	1283.91	-1309.59

## 2.4 Star Slots

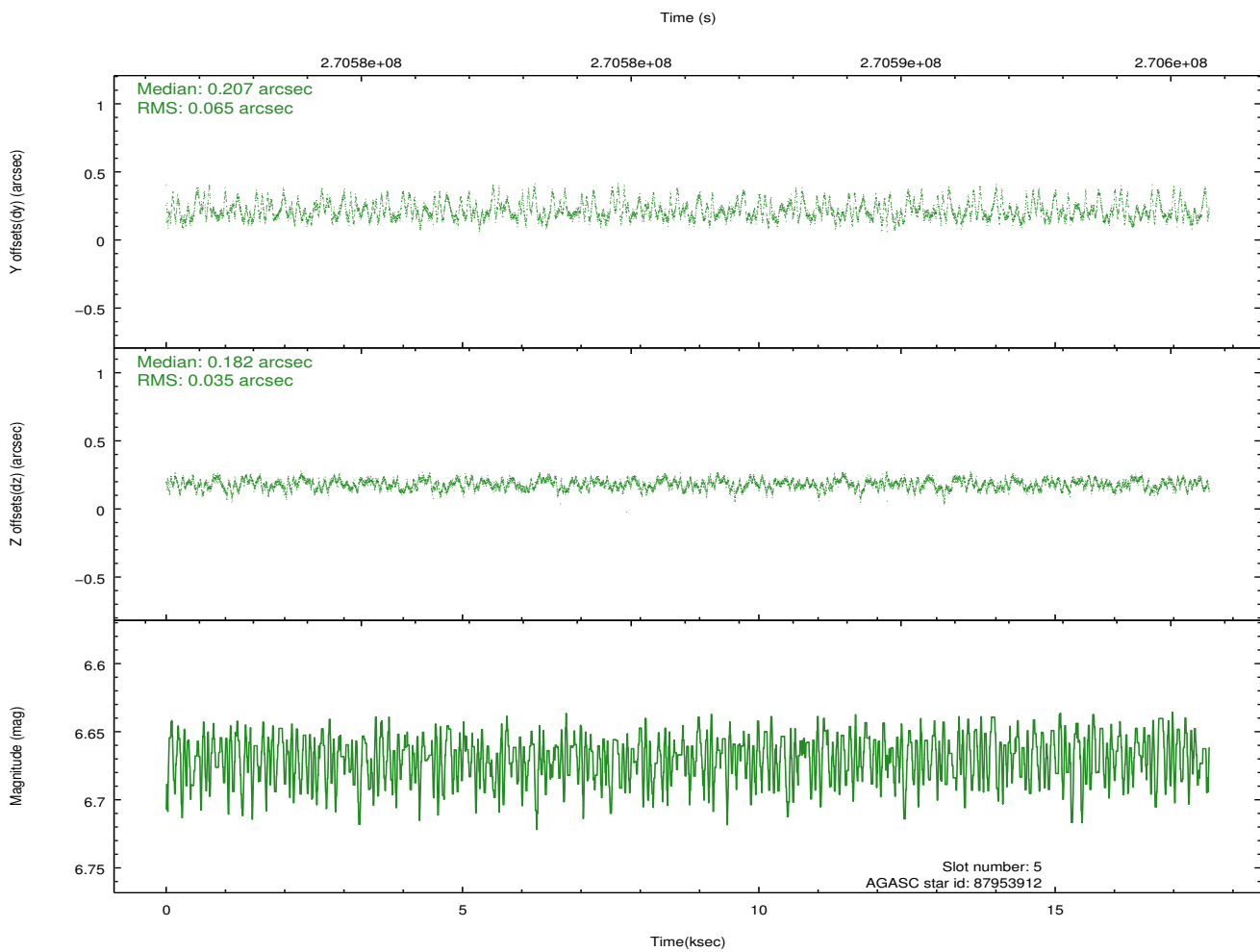
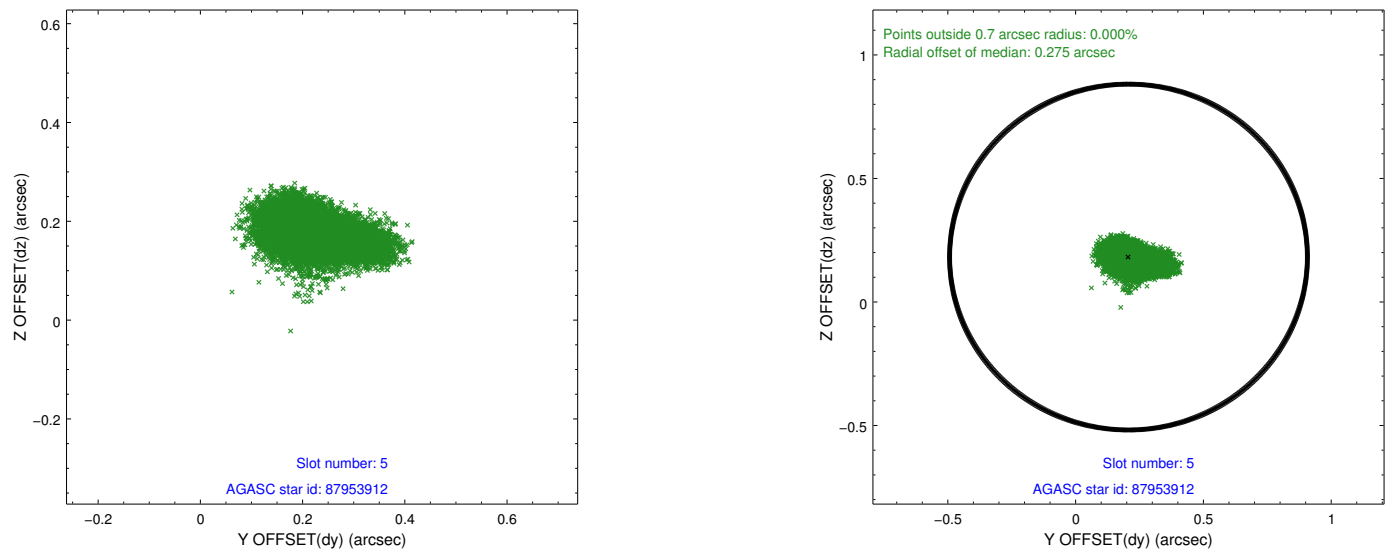
### 2.4.1 Slot 3



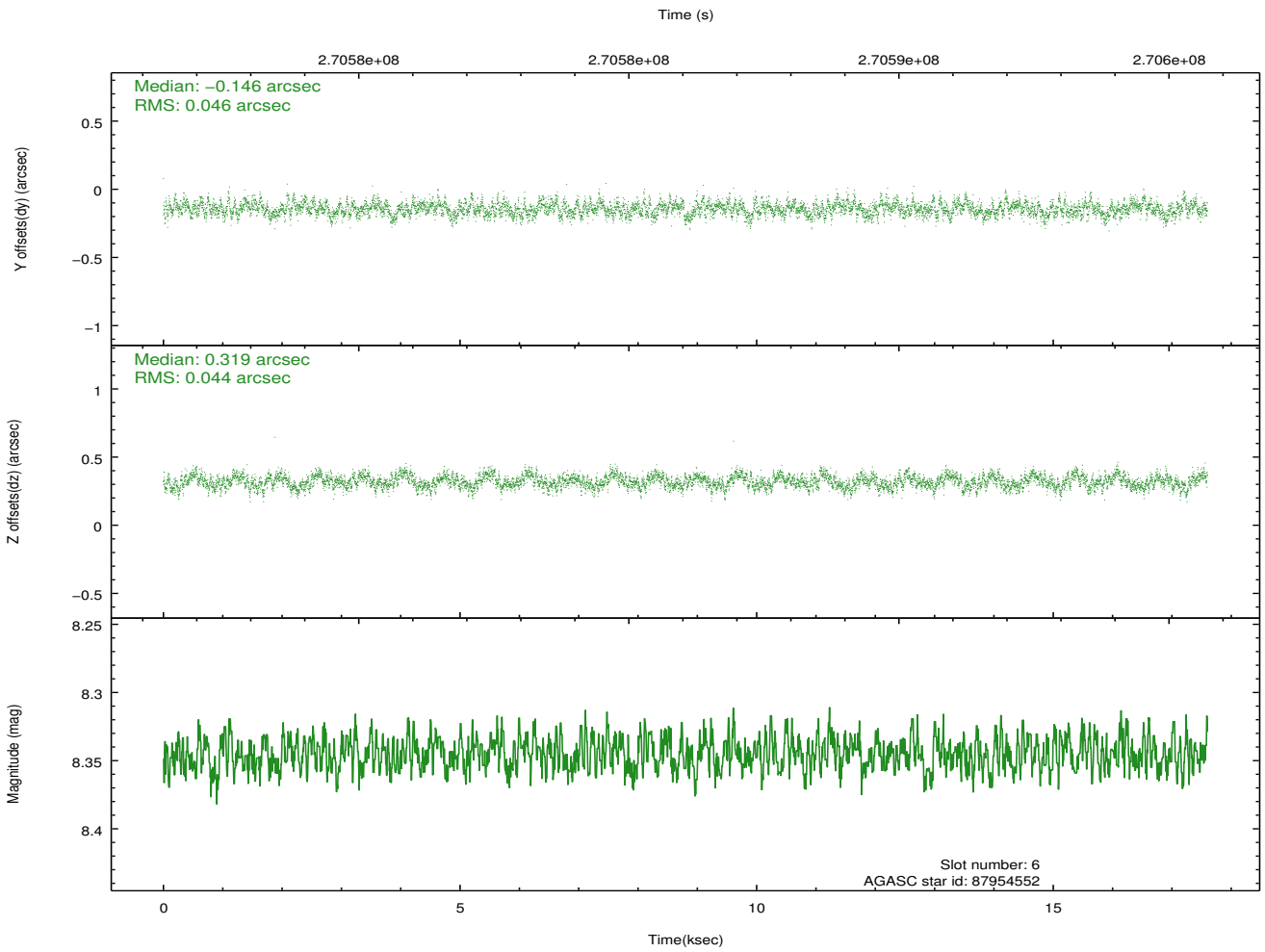
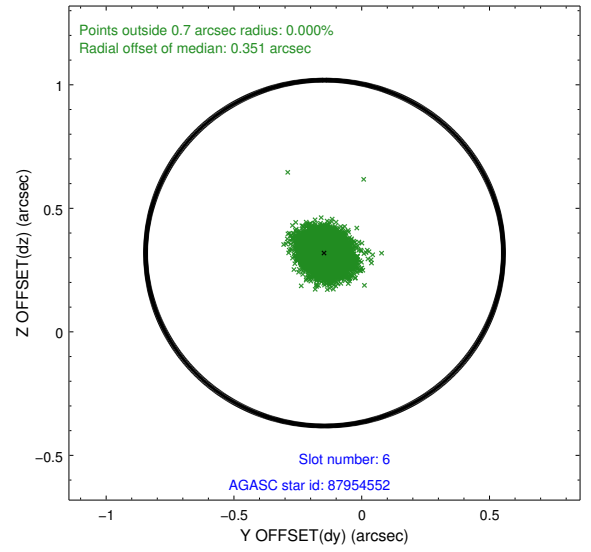
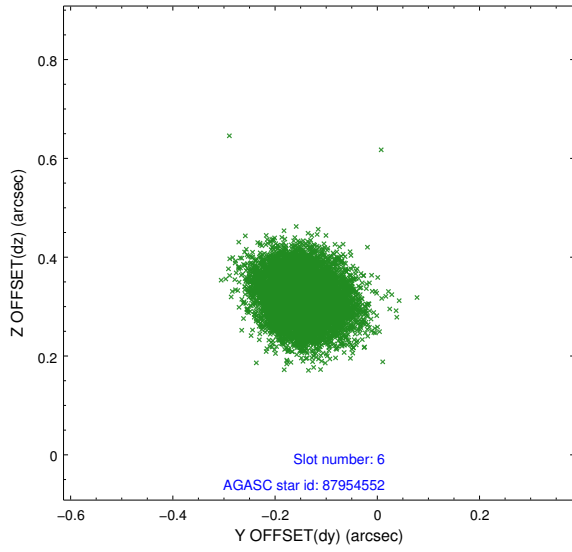
### 2.4.2 Slot 4



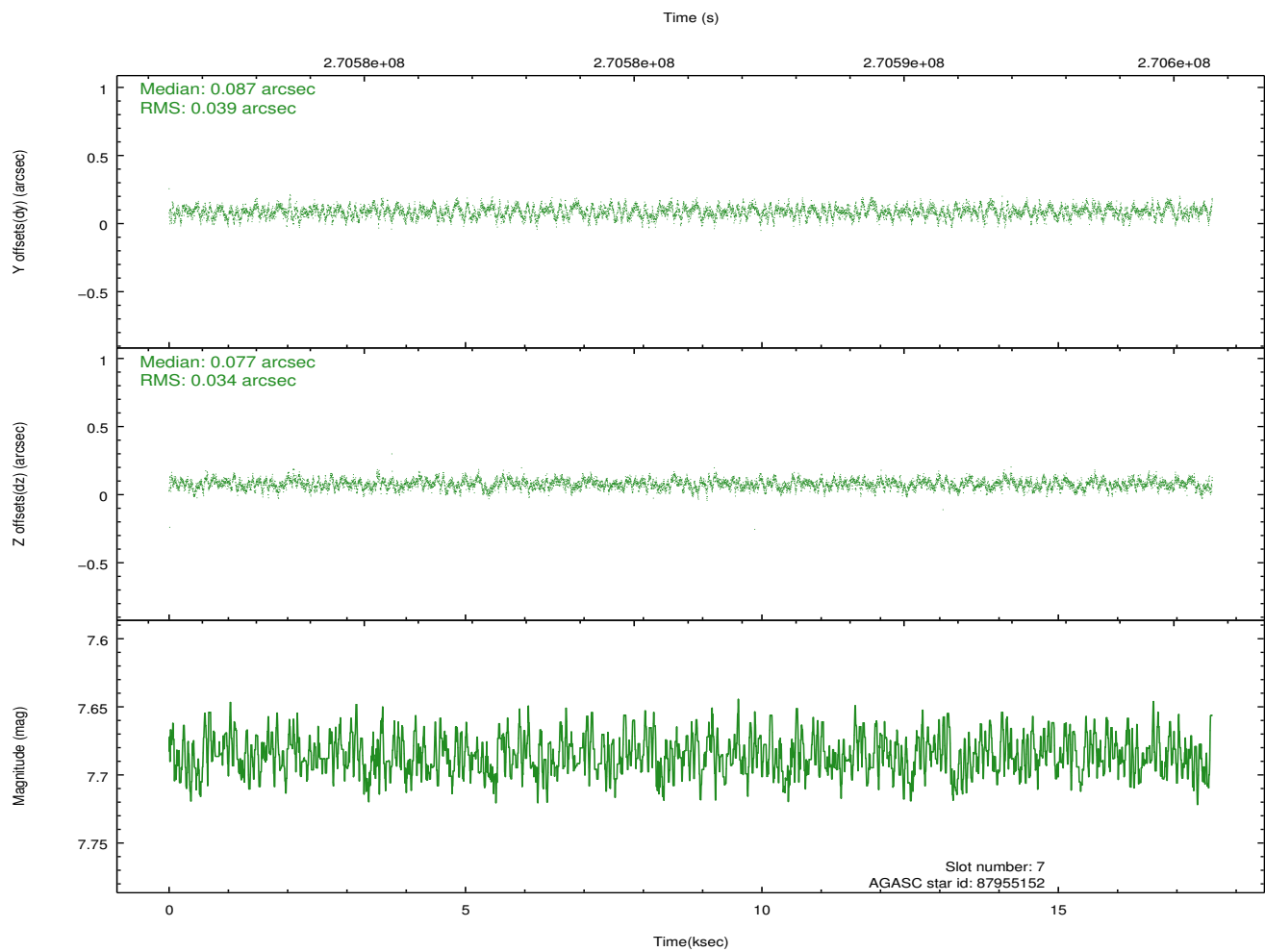
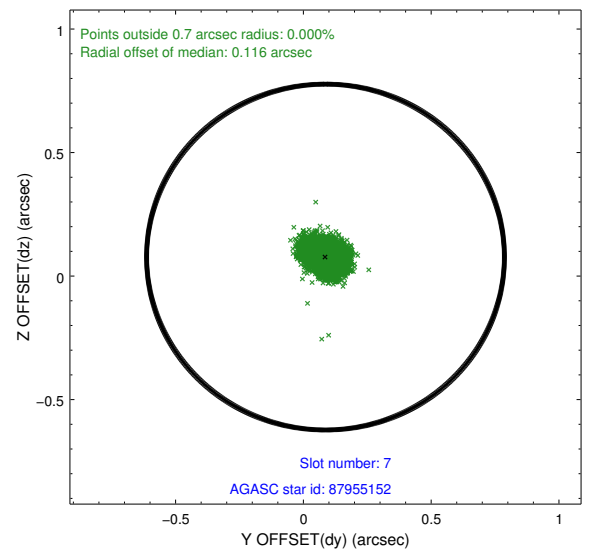
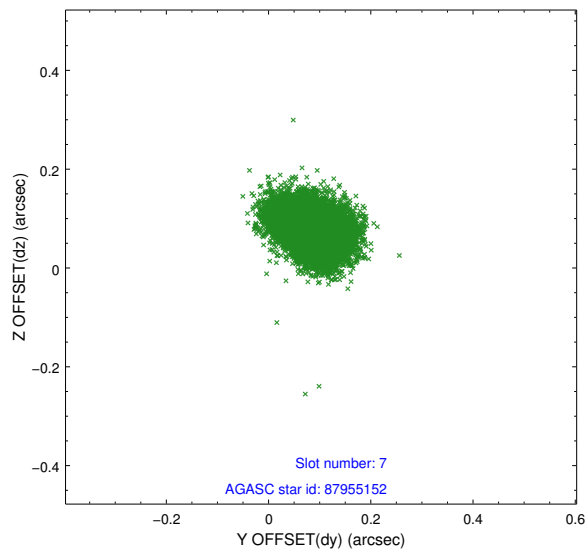
### 2.4.3 Slot 5



### 2.4.4 Slot 6

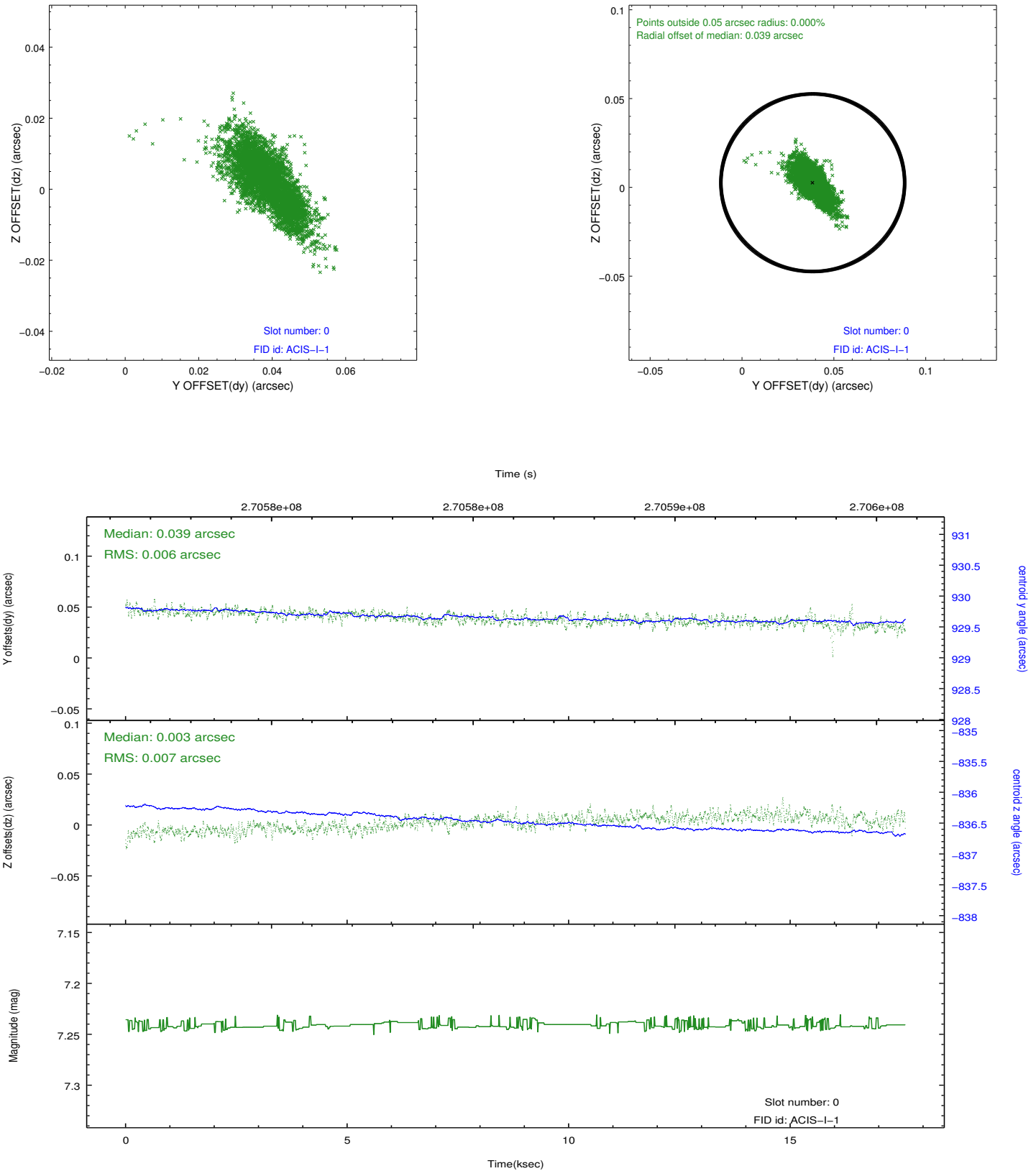


## 2.4.5 Slot 7

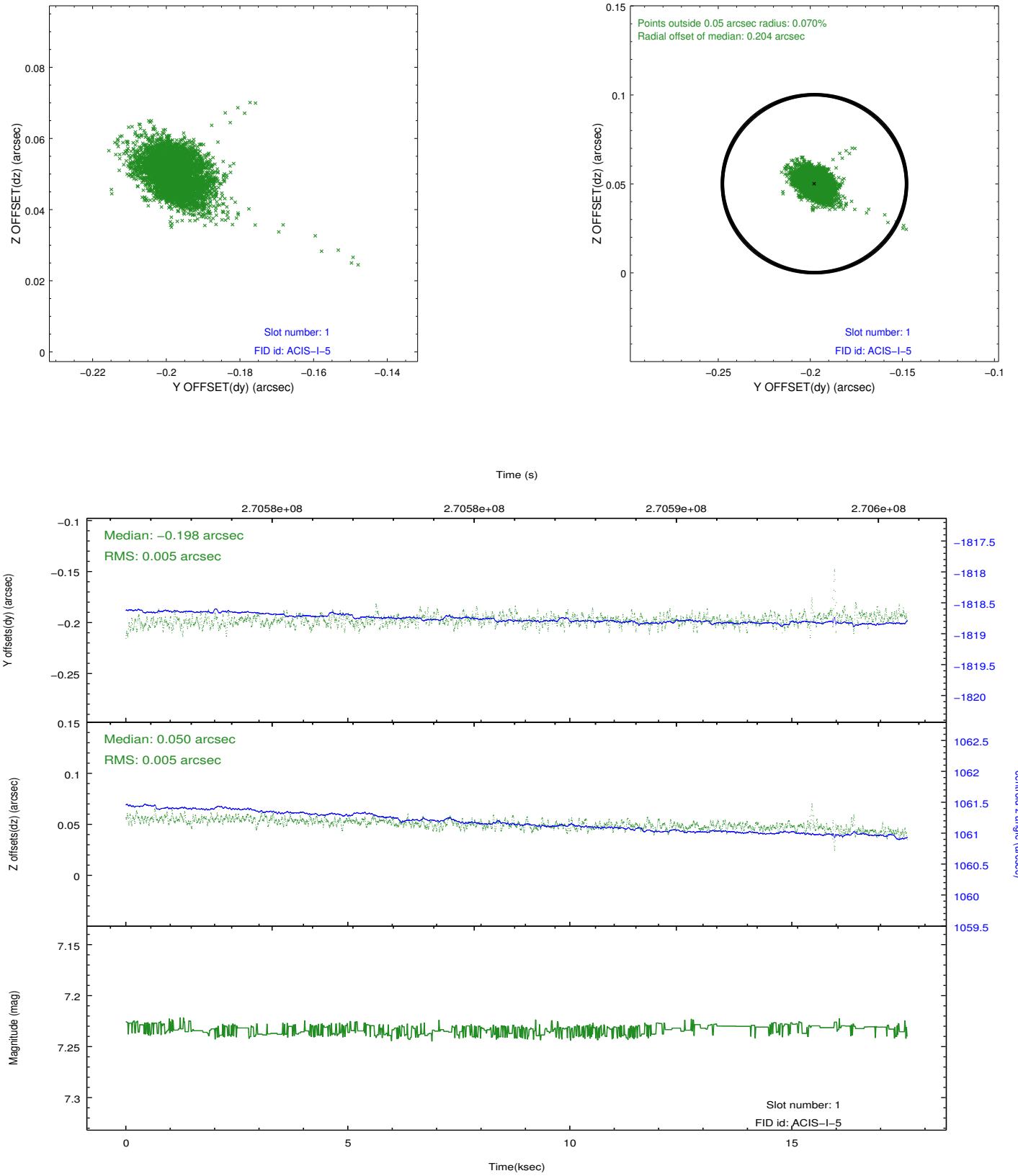


## 2.5 FID Slots

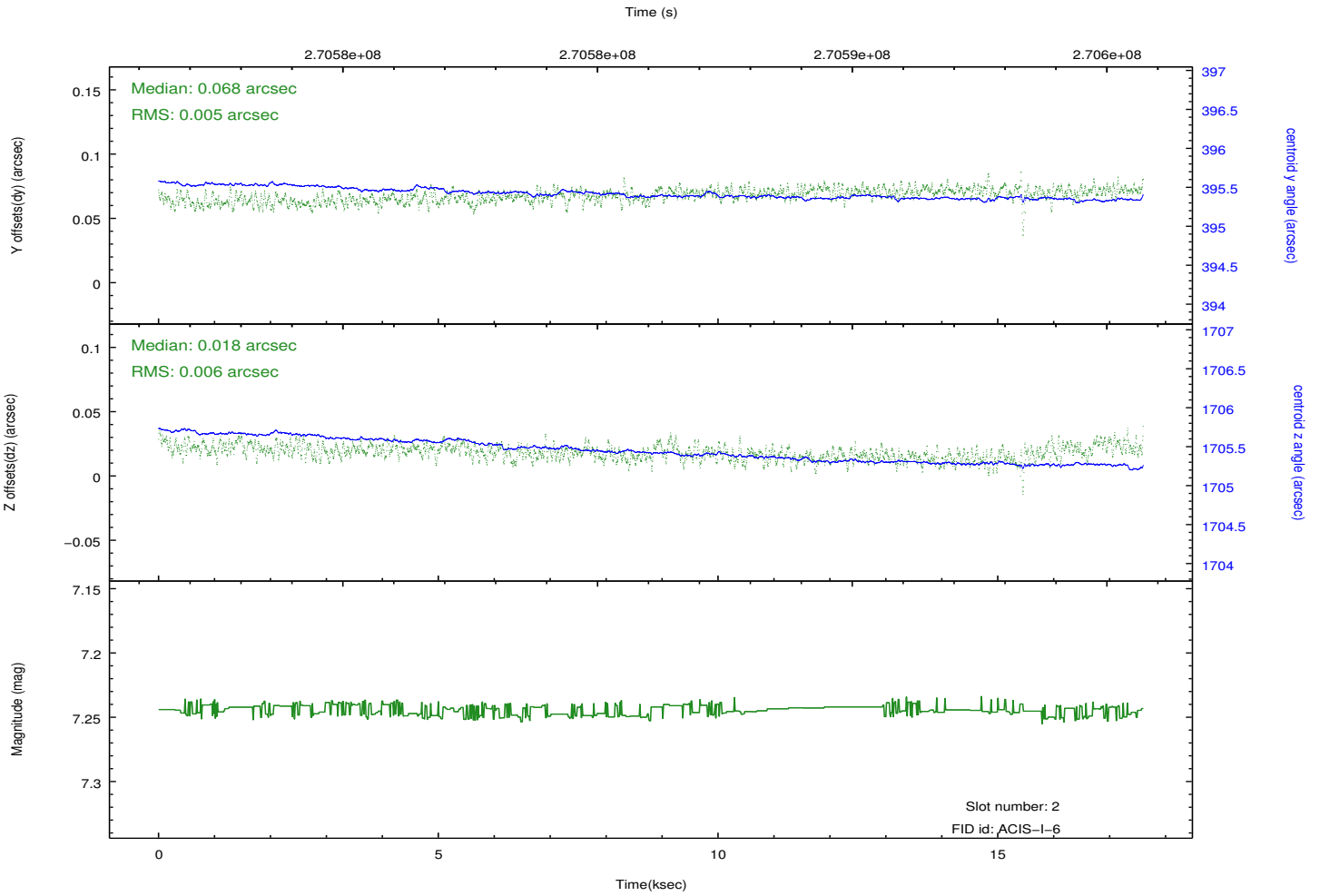
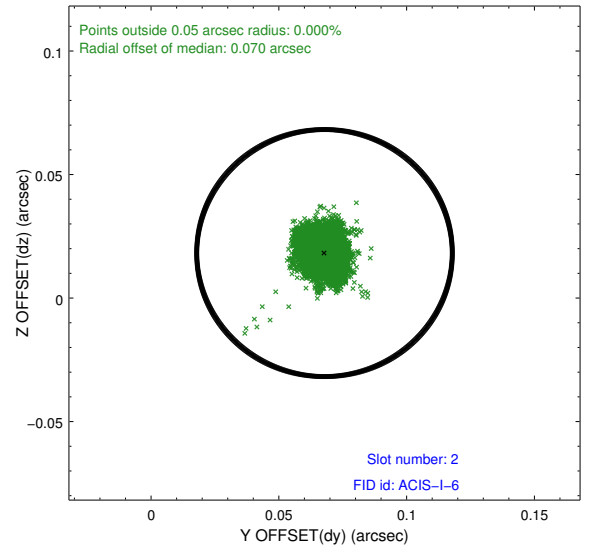
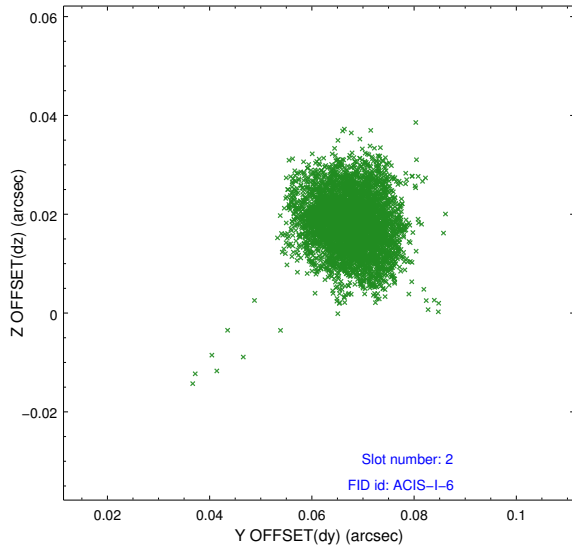
### 2.5.1 Slot 0



## 2.5.2 Slot 1



### 2.5.3 Slot 2



# A Summary

## A.1 Status

V&V Scientist	Beth Sundheim
V&V Date (YYYY-MM-DD)	2012.04.06
V&V Edition	1
V&V Disposition and Status	OK
V&V Charge Time	17.5459591

## A.2 Comments