

# V&V Reference Report

## L2 ASCDS Version : 8.4.5

Observation 731 - L2 Version 4  
Chandra X-Ray Center

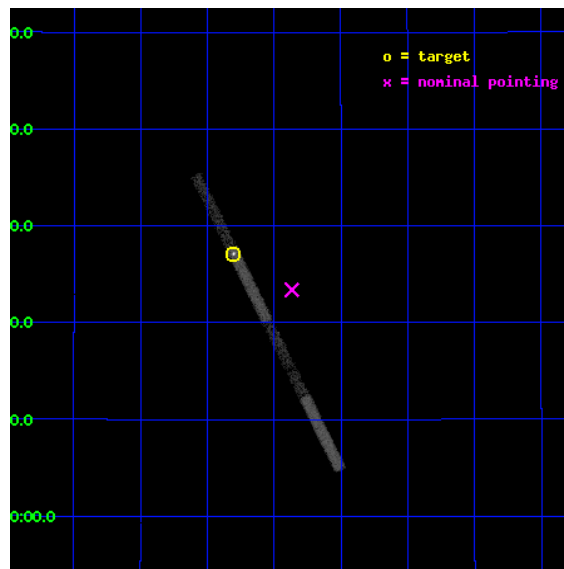
L2 Processing Date : Aug 29 2012

## Contents

<b>1</b>	<b>Front</b>	<b>2</b>
<b>2</b>	<b>OBI</b>	<b>3</b>
2.1	OBI . . . . .	3
2.1.1	Images . . . . .	3
2.1.2	Bias . . . . .	3
2.1.3	Parameters . . . . .	4
2.1.4	Events . . . . .	4
2.2	Compared Parameters . . . . .	5
2.3	Aspect . . . . .	6
2.4	Star Slots . . . . .	9
2.4.1	Slot 3 . . . . .	9
2.4.2	Slot 4 . . . . .	10
2.4.3	Slot 5 . . . . .	11
2.4.4	Slot 6 . . . . .	12
2.4.5	Slot 7 . . . . .	13
2.5	FID Slots . . . . .	14
2.5.1	Slot 0 . . . . .	14
2.5.2	Slot 1 . . . . .	15
2.5.3	Slot 2 . . . . .	16
<b>A</b>	<b>Summary</b>	<b>17</b>
A.1	Status . . . . .	17
A.2	Comments . . . . .	17

# 1 Front

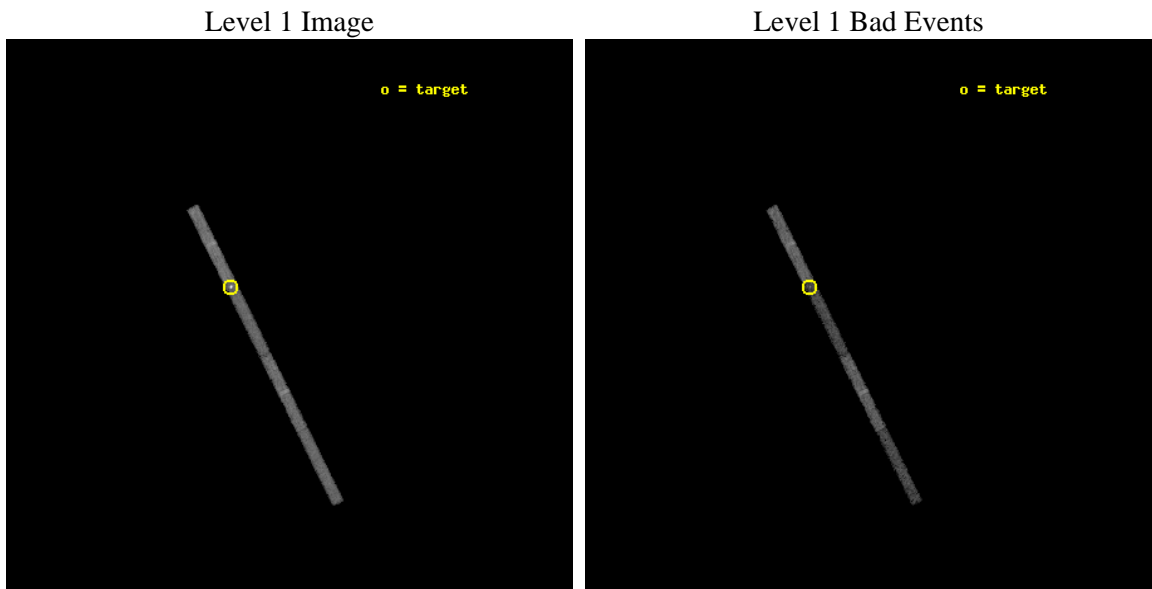
seq_num	500027	Sequence number
obs_id	731	Observation id
title	RBS 1223 - A NEW ISOLATED NEUTRON STAR?	Proposal title
observer	Guenther Hasinger	Principal investigator
object	RBS 1223	Source name
dtycycle	0	&#160
cycle	P	events from which exps? Prim/Second/Both
ra_targ	197.2025	Observer's specified target RA [deg]
dec_targ	21.452389	Observer's specified target Dec [deg]
ra_nom	197.09182578627	Nominal RA [deg]
dec_nom	21.389923746043	Nominal Dec [deg]
roll_nom	243.50485645626	Nominal Roll [deg]
revision	4	Processing version of data
ontime	10275.927557692	Sum of GTIs [s]
livetime	9496.4582634296	Livetime [s]
ontime5	10275.886517689	Sum of GTIs [s]
ontime6	10275.845477685	Sum of GTIs [s]
ontime7	10275.927557692	Sum of GTIs [s]
ontime8	10275.804437697	Sum of GTIs [s]
l2events	19393	Number of level 2 events



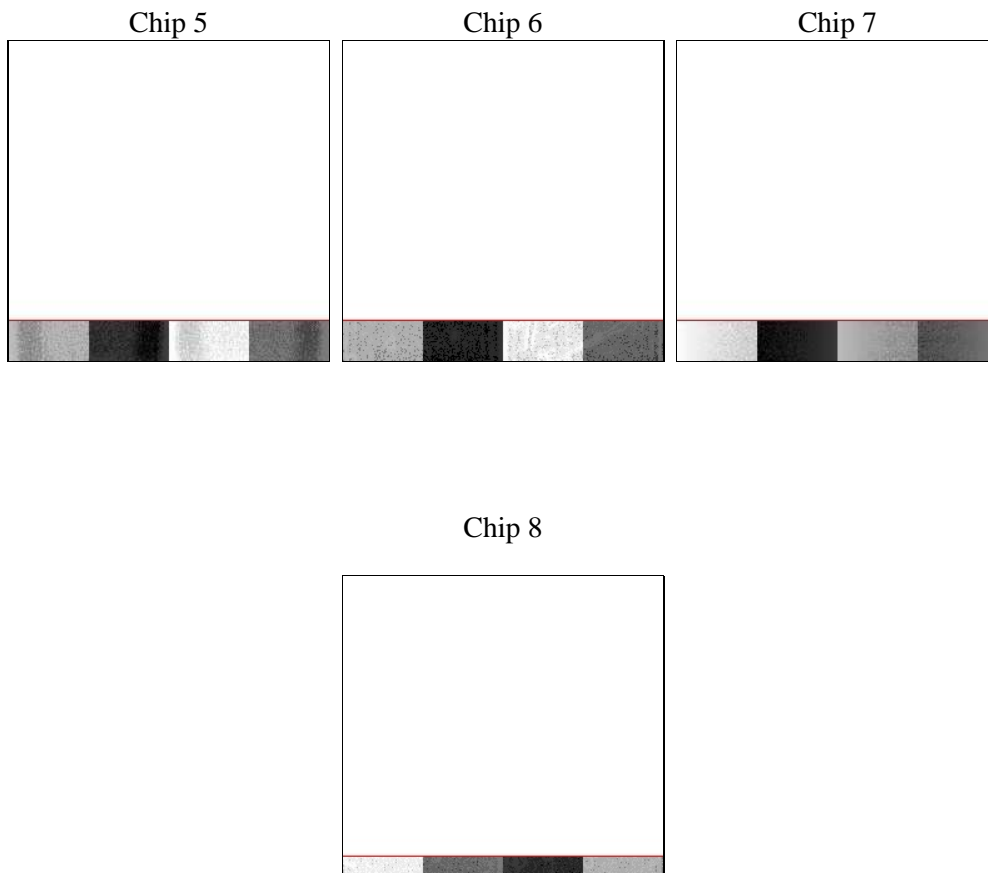
## 2 OBI

### 2.1 OBI

#### 2.1.1 Images



#### 2.1.2 Bias



### 2.1.3 Parameters

obi_num	0	Obi number	sched_exp_time	9550.000000	[s] Scheduled observation exposure time
ascdsver	8.4.5	Processing system revision	ontime	10275.927557692	Sum of GTIs [s]
caldbver	4.5.1.1	&#160	ontime5	10275.886517689	Sum of GTIs [s]
date	2012-08-29T21:35:08	Date and time of file creation	ontime6	10275.845477685	Sum of GTIs [s]
revision	4	Processing version of data	ontime7	10275.927557692	Sum of GTIs [s]
			ontime8	10275.804437697	Sum of GTIs [s]
			l1events	63033	Number of level 1 events

### 2.1.4 Events

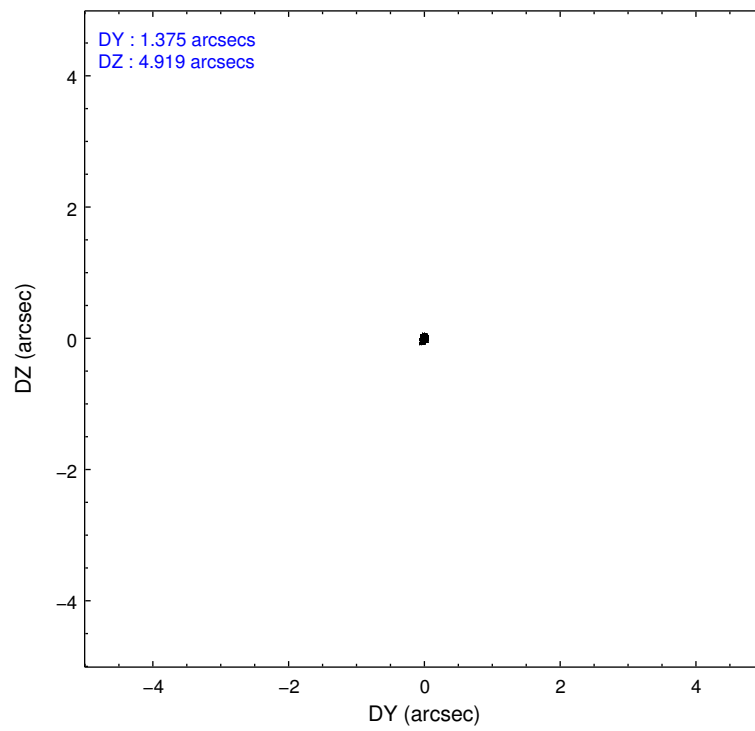
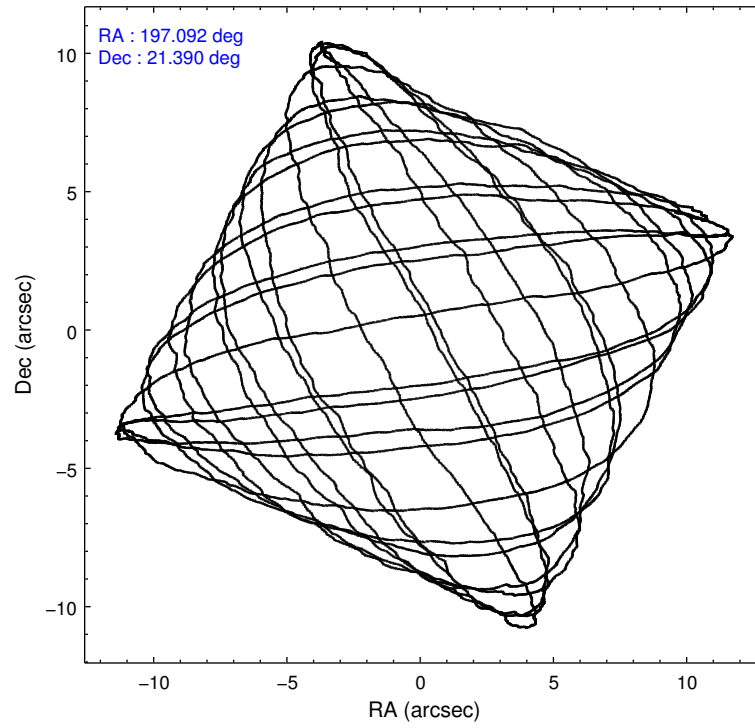
	ccd 5	ccd 6	ccd 7	ccd 8
level 1 events	11235	14576	18442	18780
rejected events	5786	13264	6153	16102
rejected %	51%	90%	33%	85%

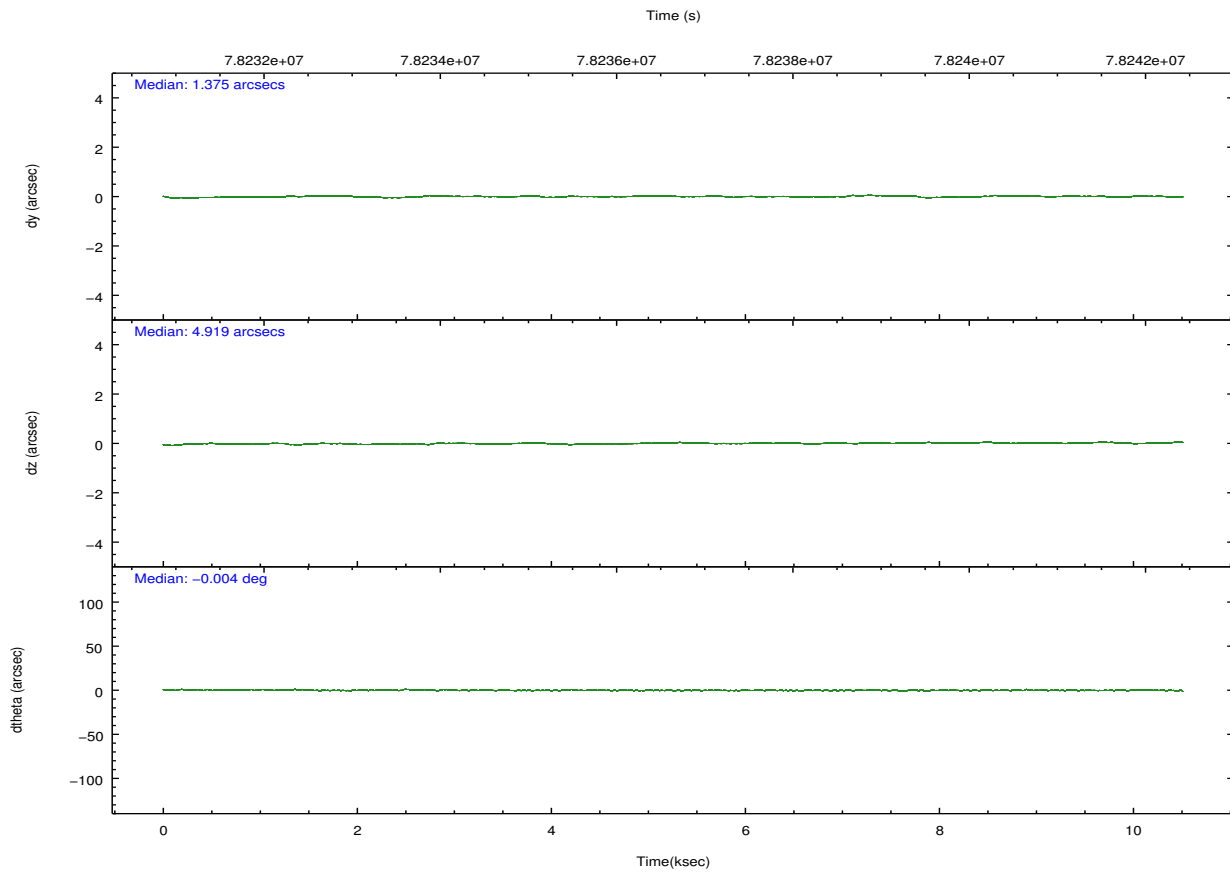
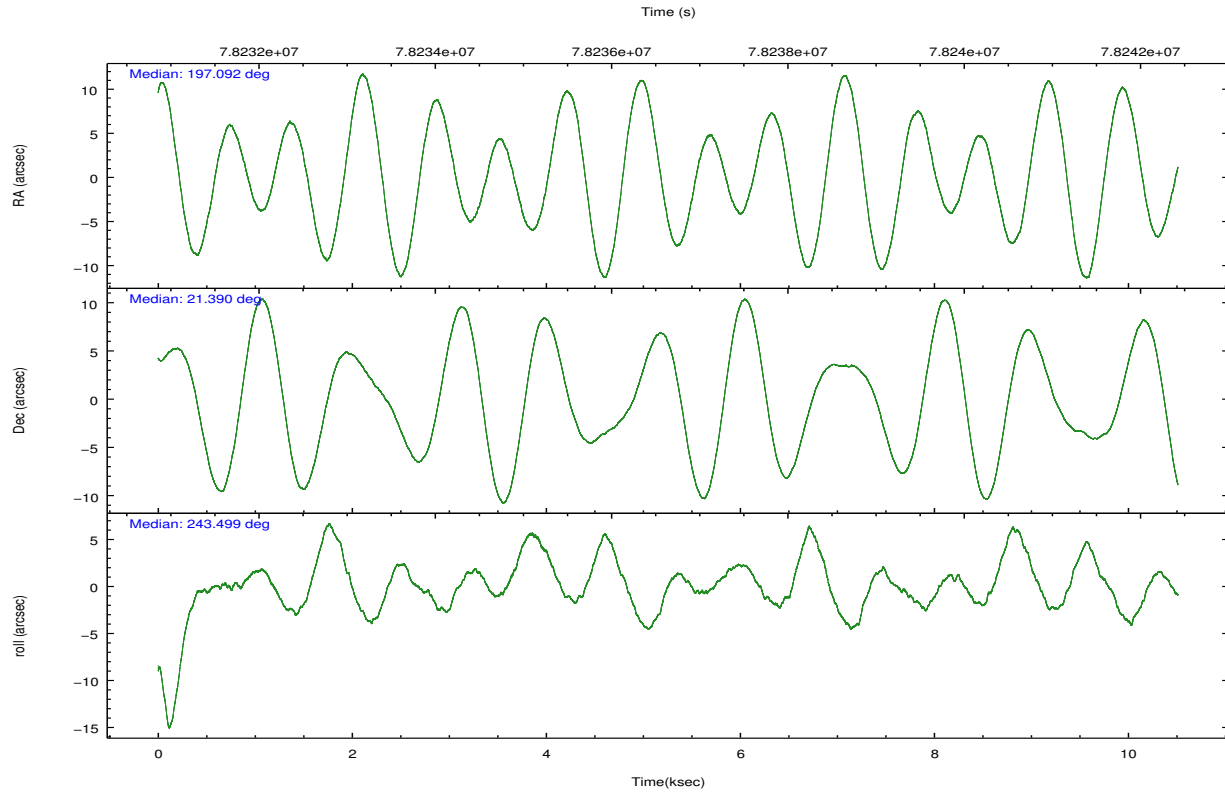
	ccd 5	ccd 6	ccd 7	ccd 8
grade 0 events	569	397	3690	765
	5%	2%	20%	4%
grade 1 events	7	3	16	8
	0%	0%	0%	0%
grade 2 events	1360	171	2854	417
	12%	1%	15%	2%
grade 3 events	509	260	1521	442
	4%	1%	8%	2%
grade 4 events	511	277	1413	392
	4%	1%	7%	2%
grade 5 events	1054	278	954	299
	9%	1%	5%	1%
grade 6 events	2501	207	2812	662
	22%	1%	15%	3%
grade 7 events	4724	12983	5182	15795
	42%	89%	28%	84%

## 2.2 Compared Parameters

Parameter	Planned	Actual	Parameter	Planned	Actual
Instrument	ACIS	ACIS	Obspar format version number	7	7
Detector	ACIS-5678	ACIS-5678	Obspar file type	PREDICTED	ACTUAL
Grating	NONE	NONE	Obspar update status	NONE	UPDATED
Data mode	VFAINT	VFAINT	Number of optional ACIS chips dropped	0	0
Observation mode	POINTING	POINTING	On-chip summing requested	N	N
[deg] Pointing RA	197.089893	197.0918257862674	Subarray requested	CUSTOM	1/8
[deg] Pointing Dec	21.417256	21.38992374604304	Subarray start row	1	1
[deg] Pointing Roll	243.348930	243.5048564562626	Subarray row count	128	128
[mm] SIM focus pos	-0.684267	-0.6828225247311905	Alternating exposures requested	N	N
[mm] SIM defocus	0	0.001444936568705701	[s] Primary exposure time	0.000000	0.5
[mm] SIM translation stage pos	-190.132523	-190.1425803651734			
[mm] SIM translation stage offset	0	0.01005778216563158			
[s] Observation start time (MET)	78232343.184000	78230999.243889			
Observation start date	2000-06-24T11:11:19	2000-06-24T10:49:59			
[s] Observation end time (MET)	78241893.184000	78242344.96930701			
Observation end date	2000-06-24T13:50:29	2000-06-24T13:59:04			
Read mode	TIMED	TIMED			

## 2.3 Aspect



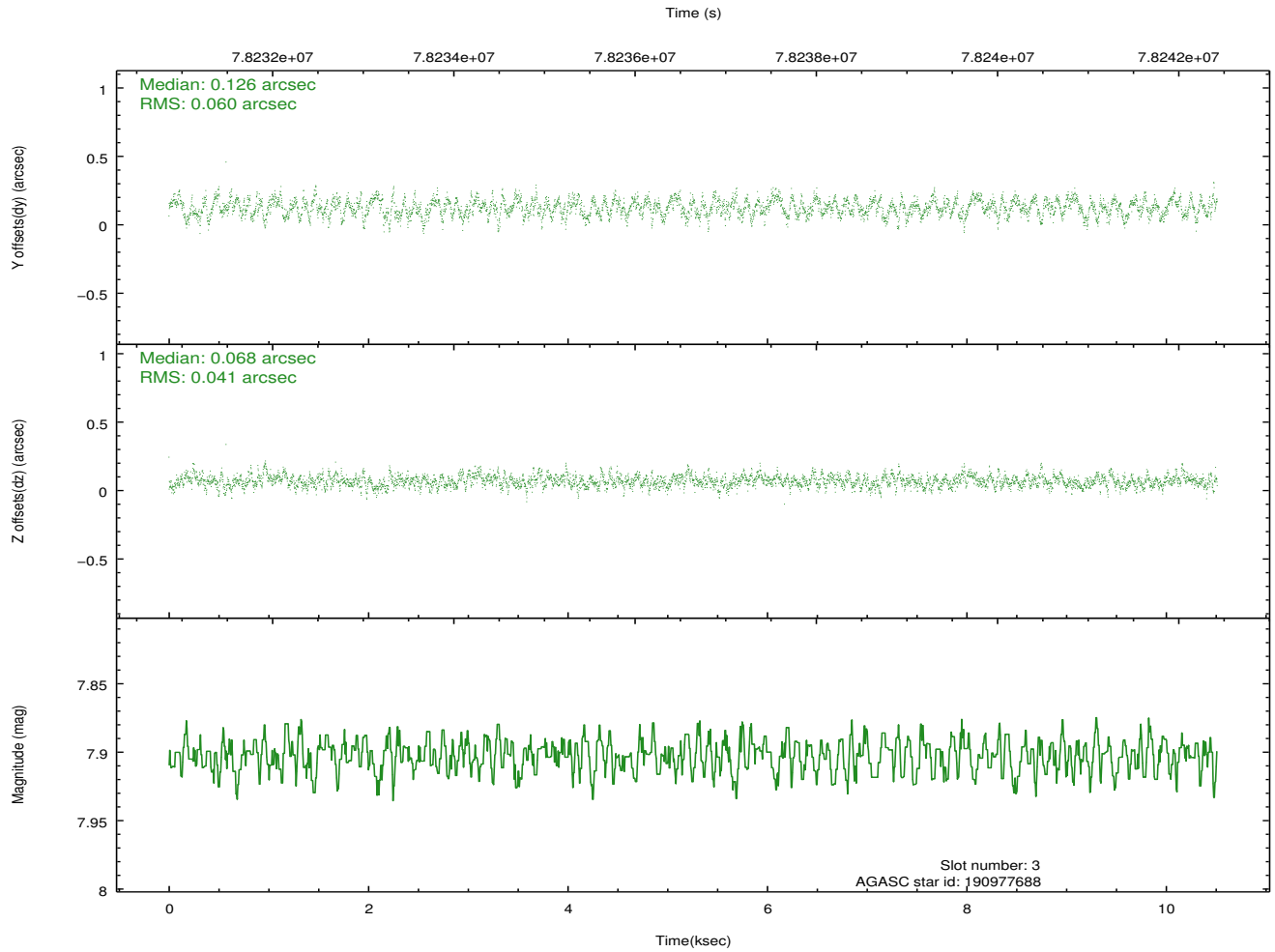
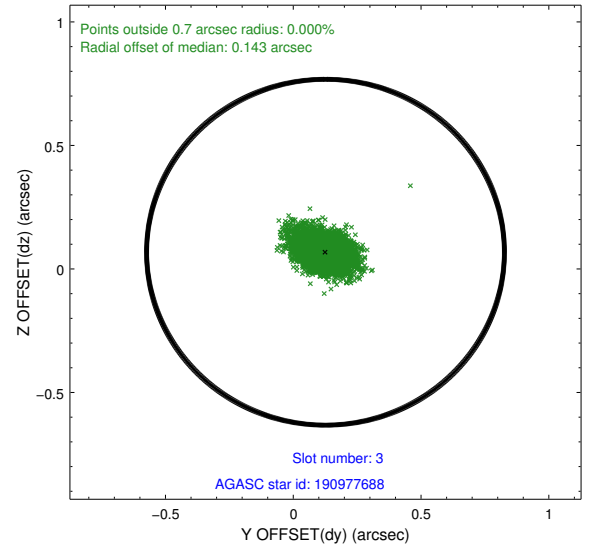
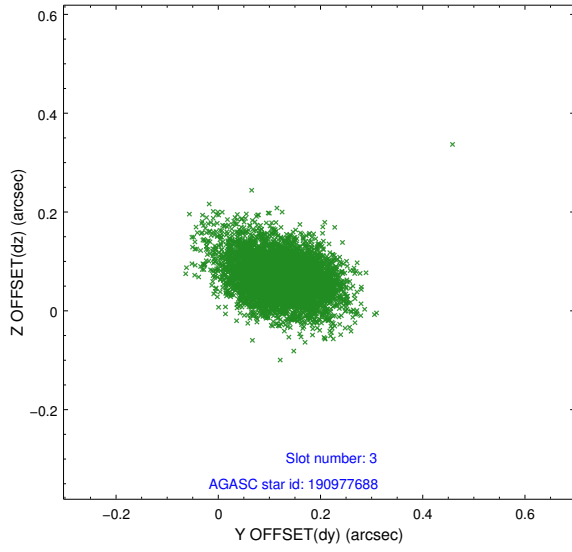


### Slot Statistics

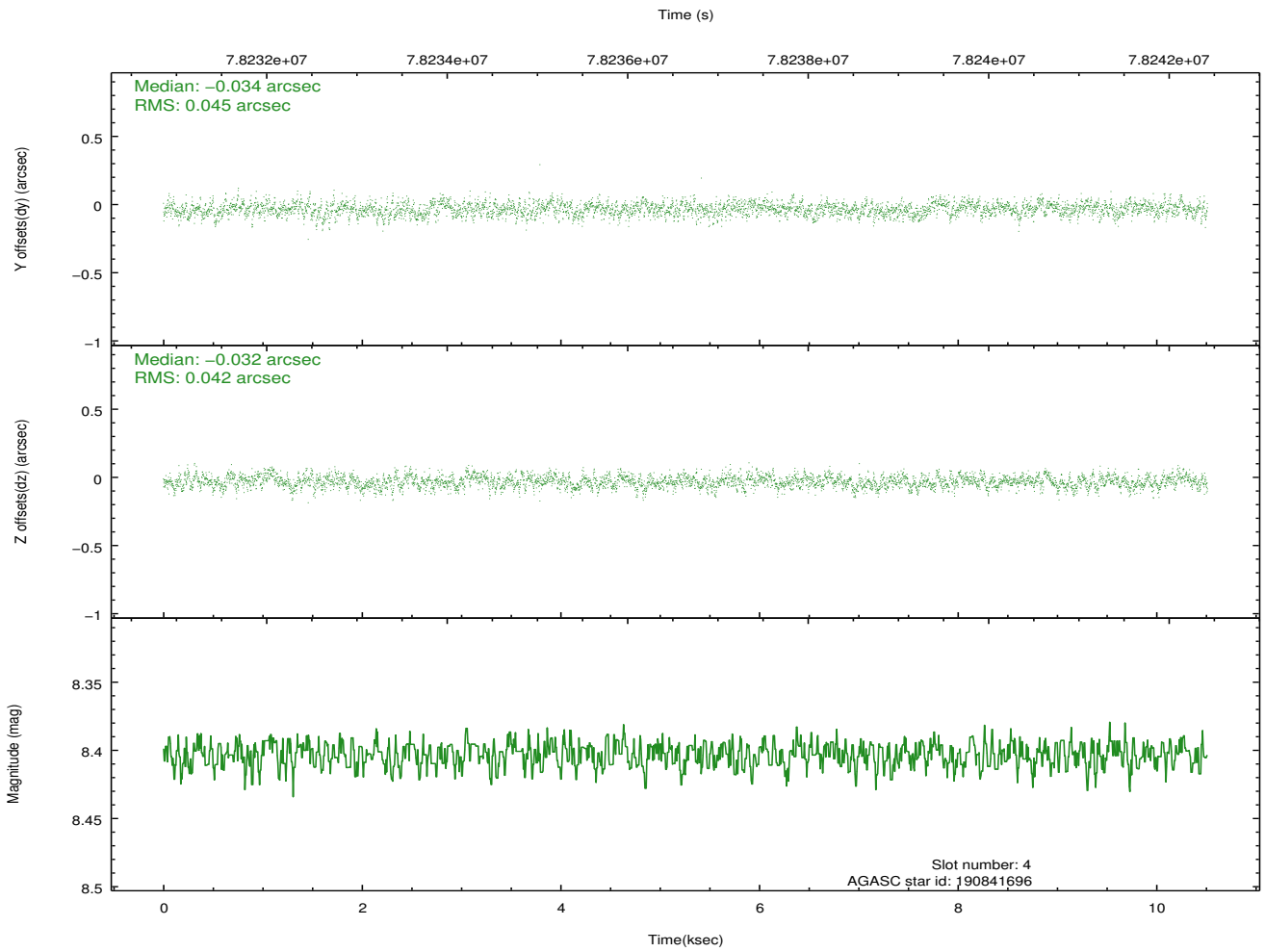
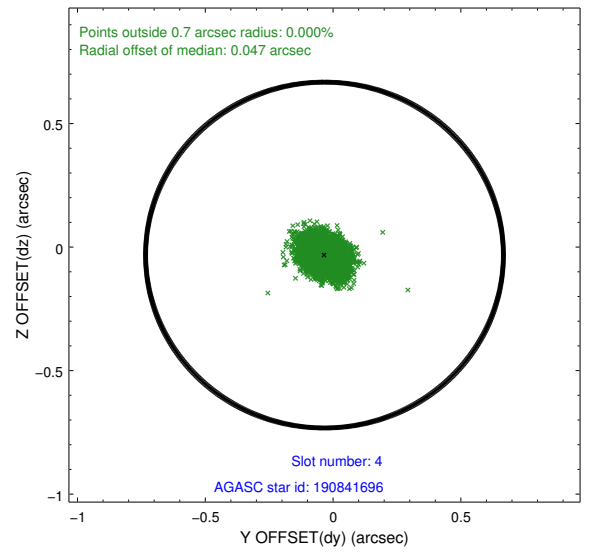
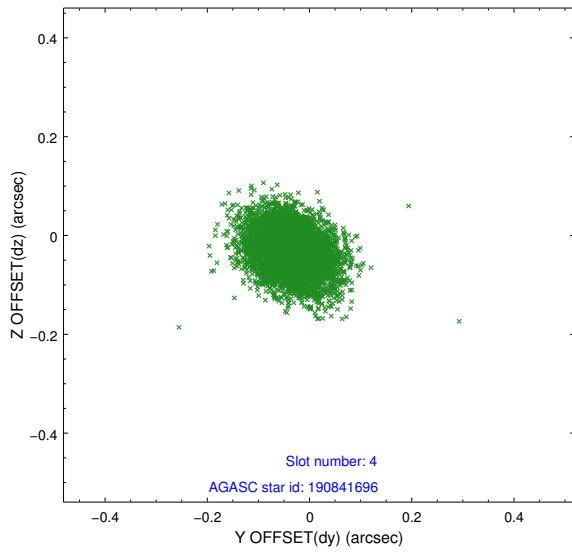
slot	status	id	mag	n_pts	med_dy	med_dz	dr1	dr2	ra	dec	mean_y	mean_z
0	FID	ACIS-S-2	7.11	2563	-0.035	-0.007	0.007	0.011	0.000000	0.000000	-754.00	-1725.98
1	FID	ACIS-S-4	7.21	2564	-0.000	0.019	0.006	0.012	0.000000	0.000000	2159.08	182.02
2	FID	ACIS-S-5	7.24	2564	0.004	-0.003	0.006	0.011	0.000000	0.000000	-1806.17	176.23
3	GUIDE	190977688	7.90	5128	0.126	0.068	0.075	0.126	197.454100	20.653773	1904.80	2329.58
4	GUIDE	190841696	8.40	5129	-0.034	-0.032	0.065	0.107	197.285441	21.456102	-419.07	523.52
5	GUIDE	190973928	9.86	5125	-0.136	0.073	0.129	0.208	197.904188	21.564389	-1703.23	2196.34
6	GUIDE	190979840	10.36	5124	0.055	0.114	0.148	0.238	197.337465	20.846267	1462.45	1667.38
7	GUIDE	190847304	10.15	5124	-0.012	-0.222	0.134	0.218	196.395854	21.619494	386.98	-2404.25

## 2.4 Star Slots

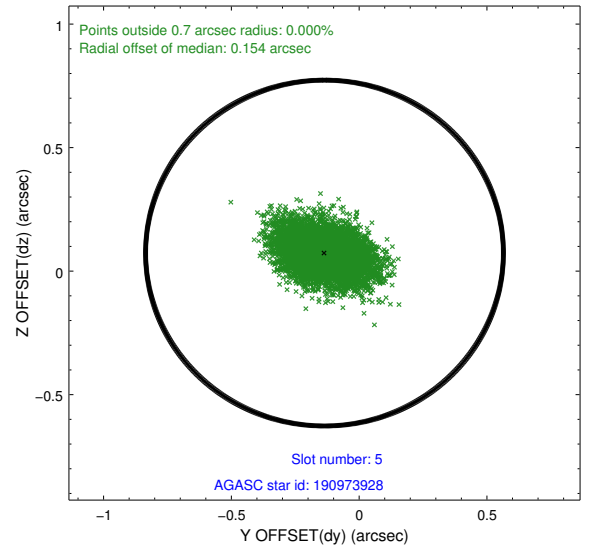
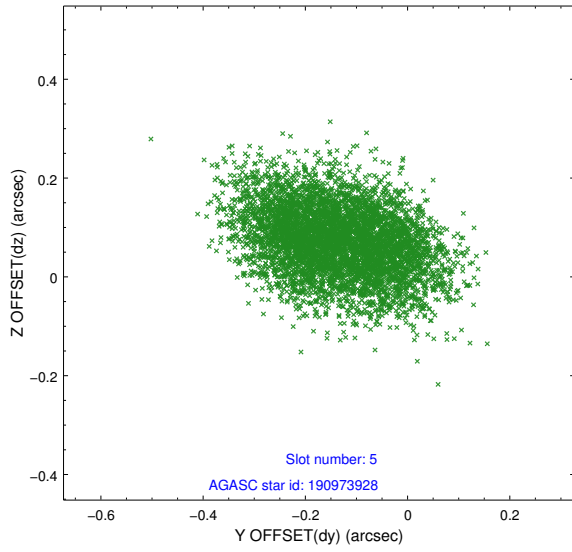
### 2.4.1 Slot 3



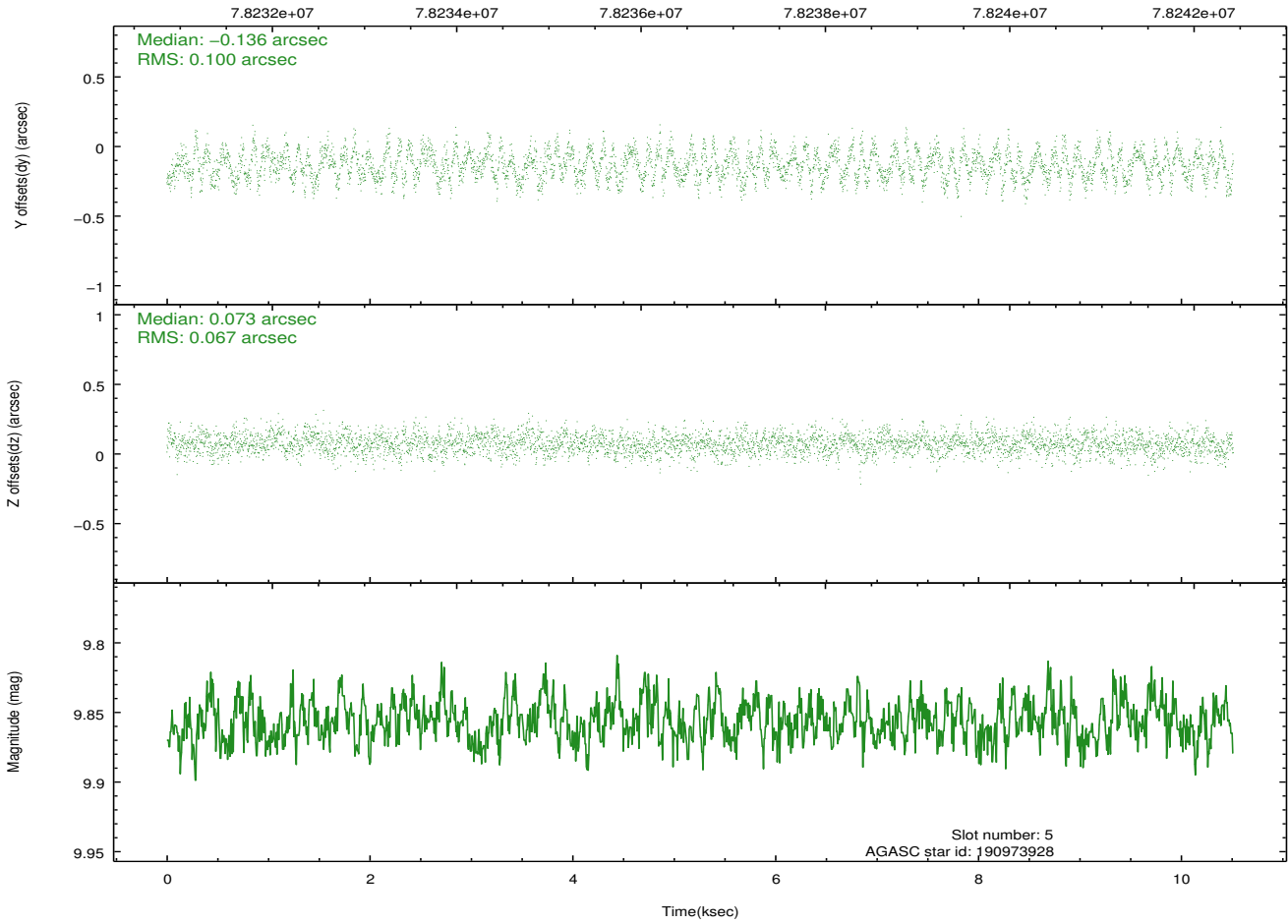
### 2.4.2 Slot 4



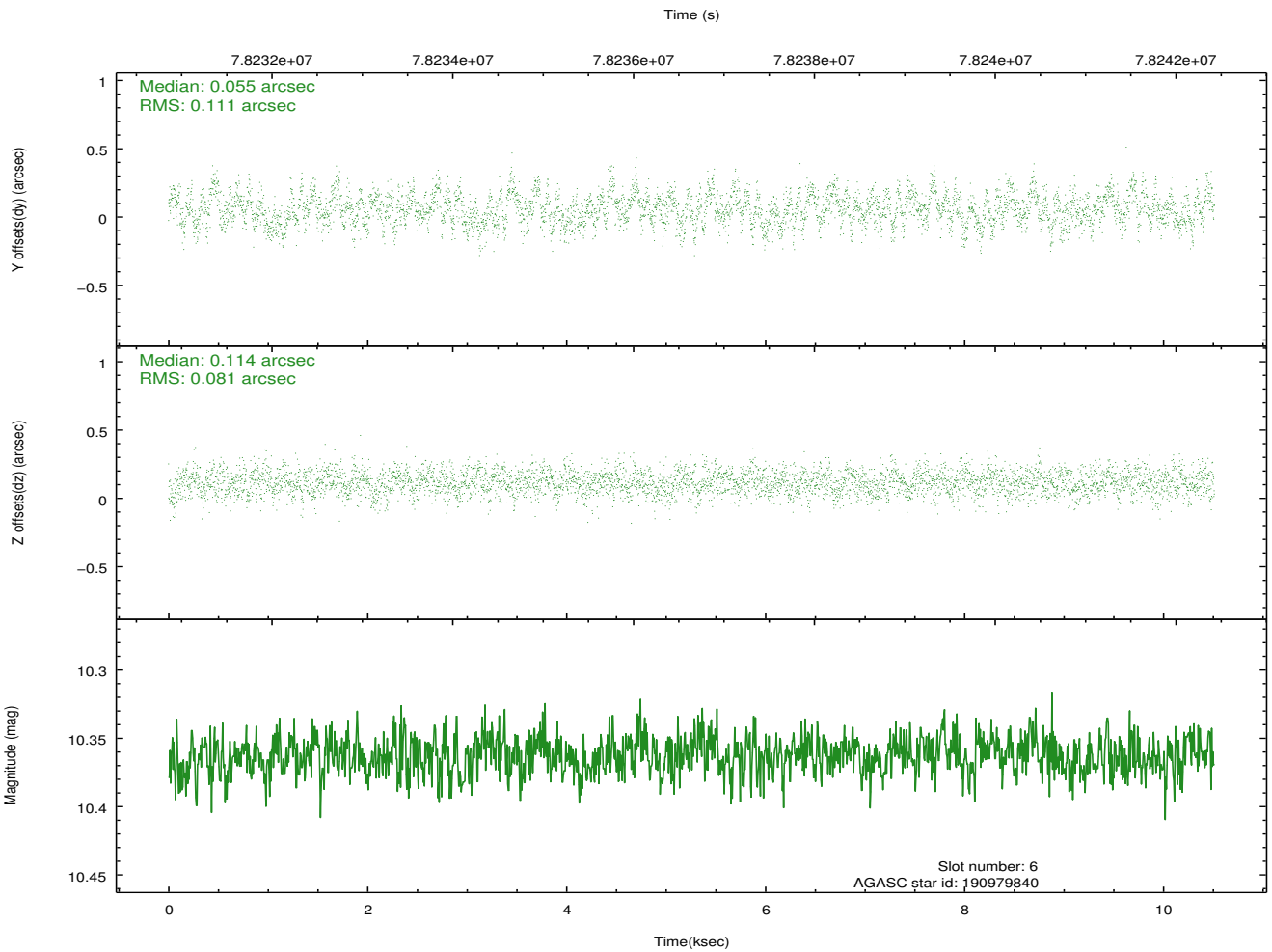
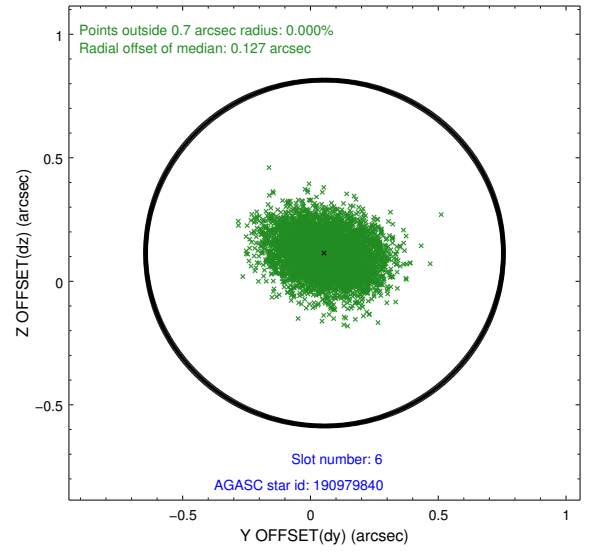
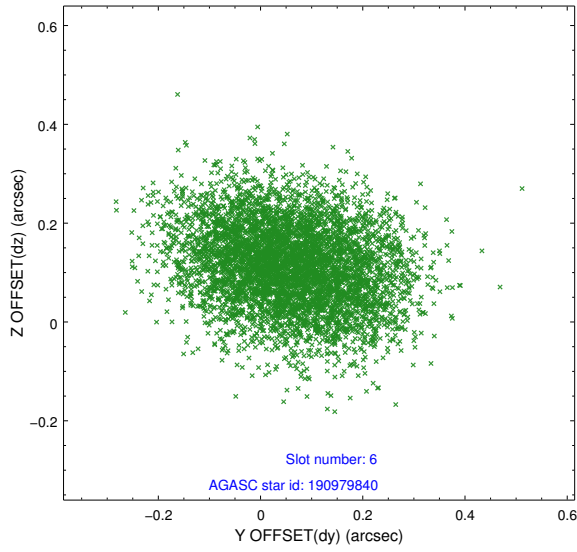
### 2.4.3 Slot 5



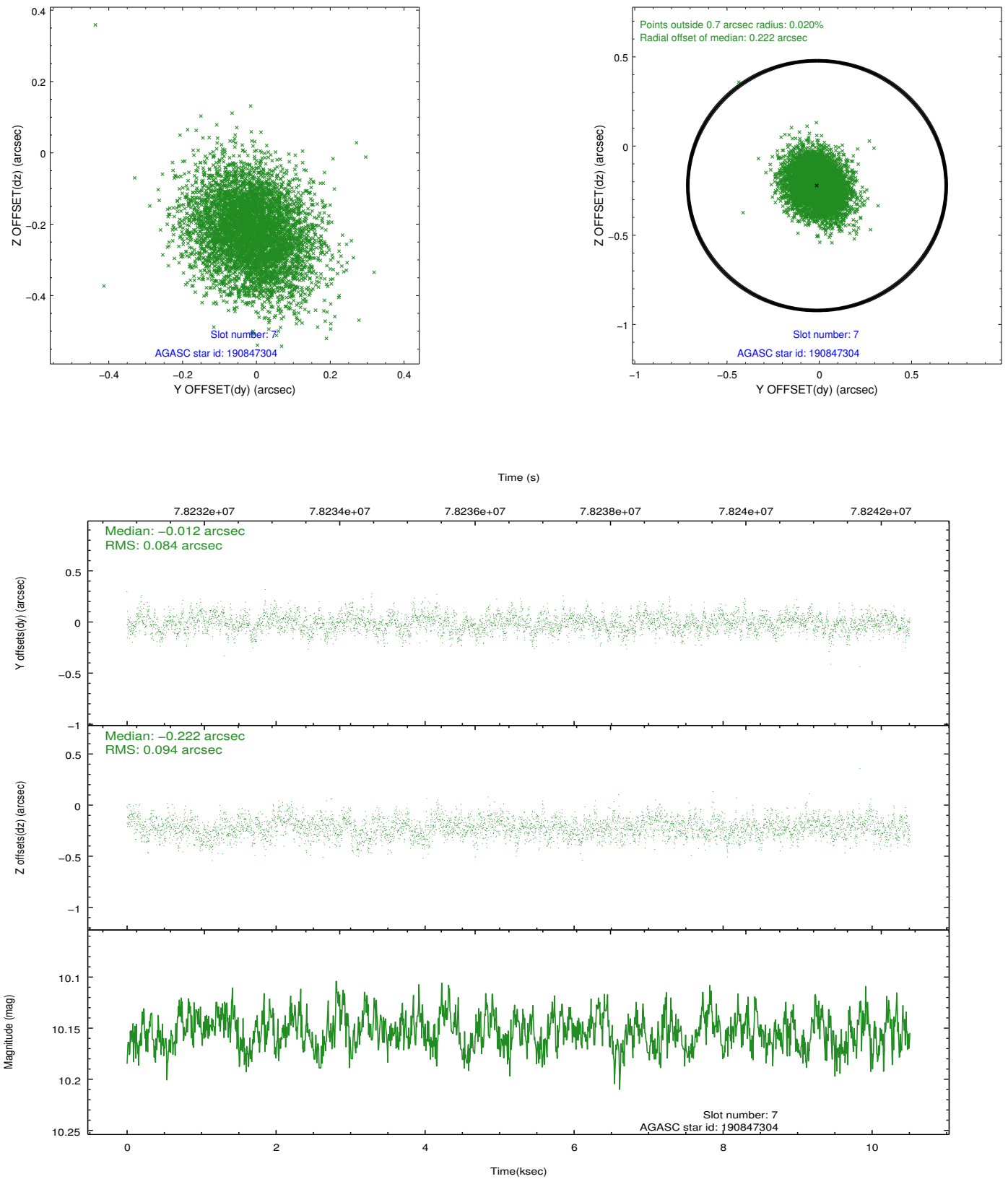
Time (s)



### 2.4.4 Slot 6

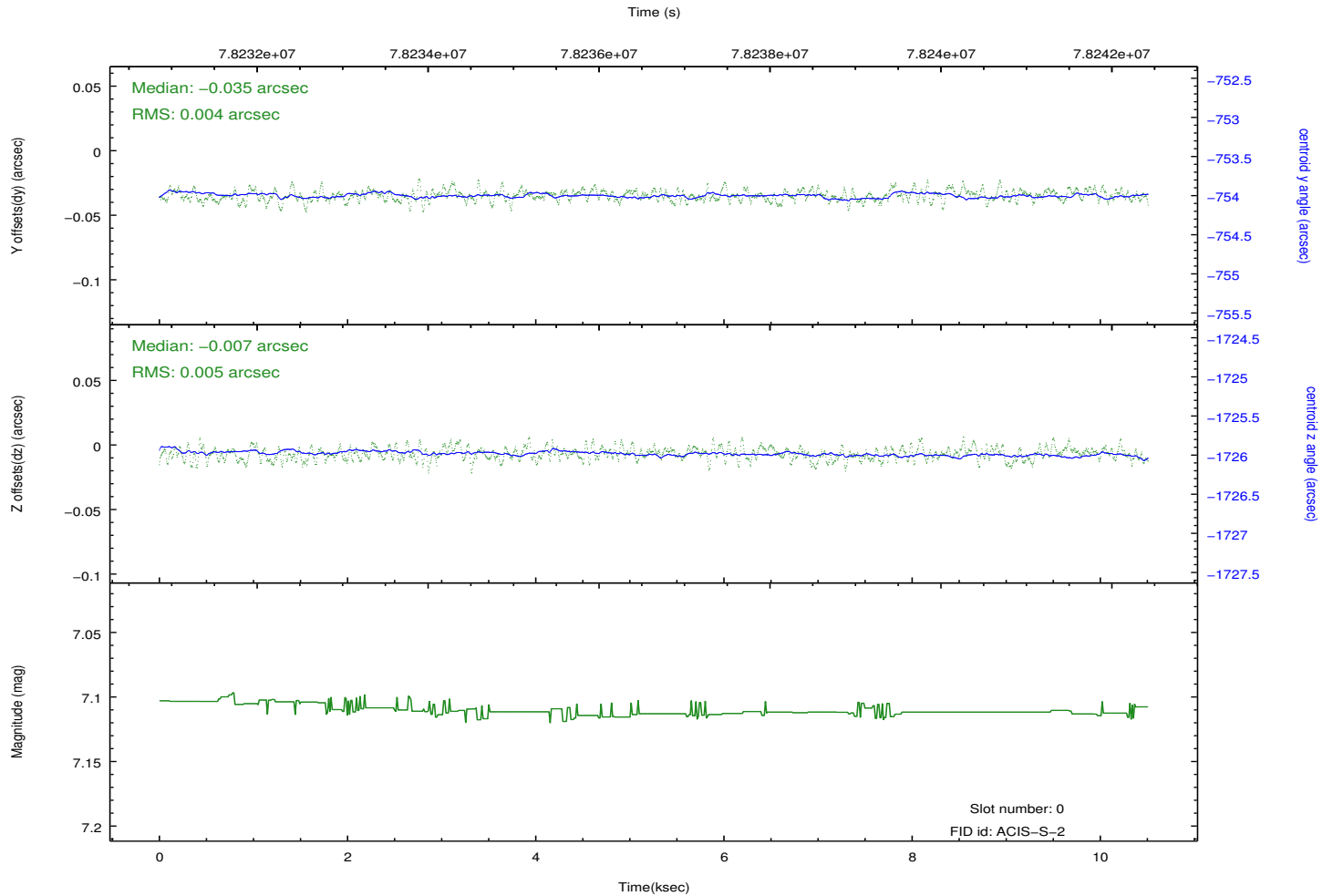
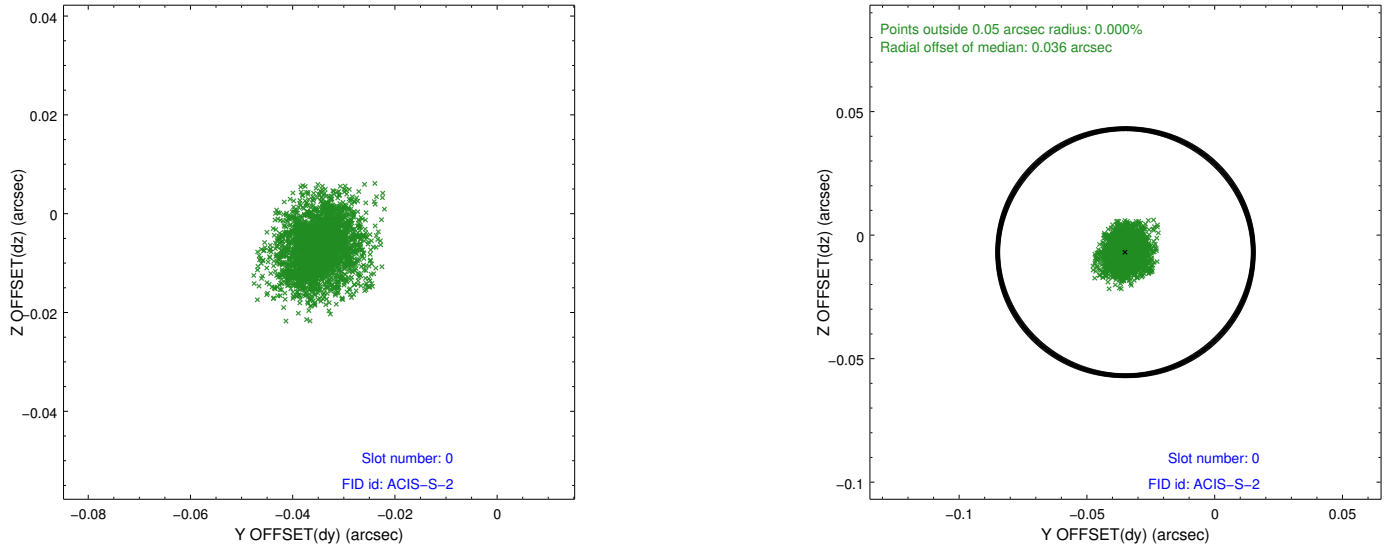


## 2.4.5 Slot 7

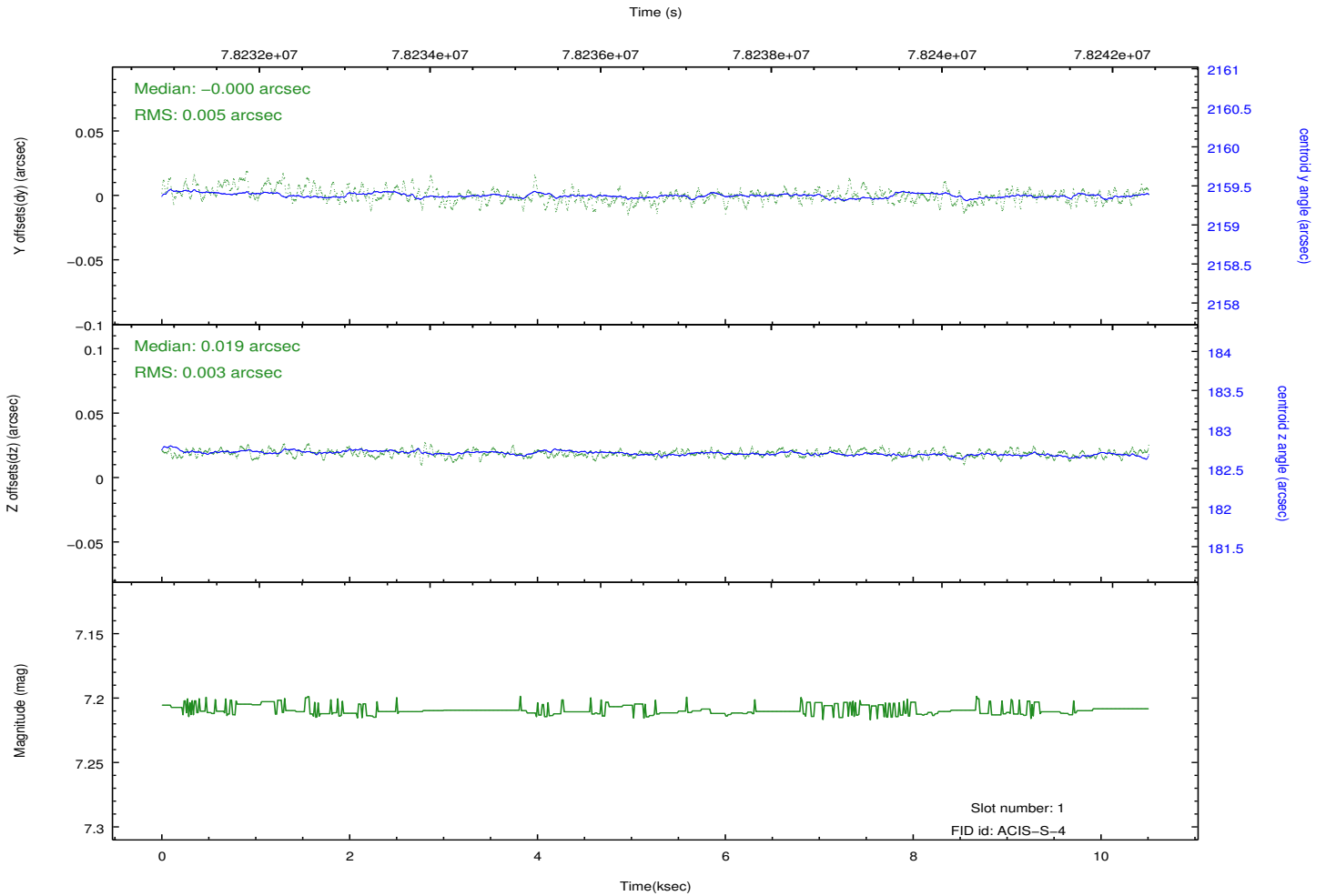
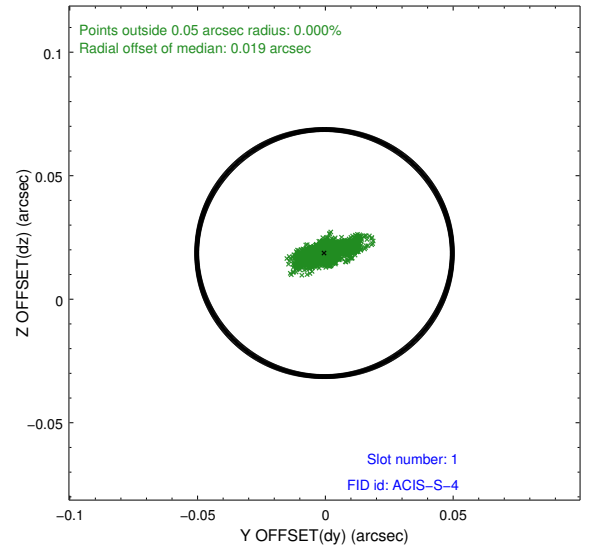
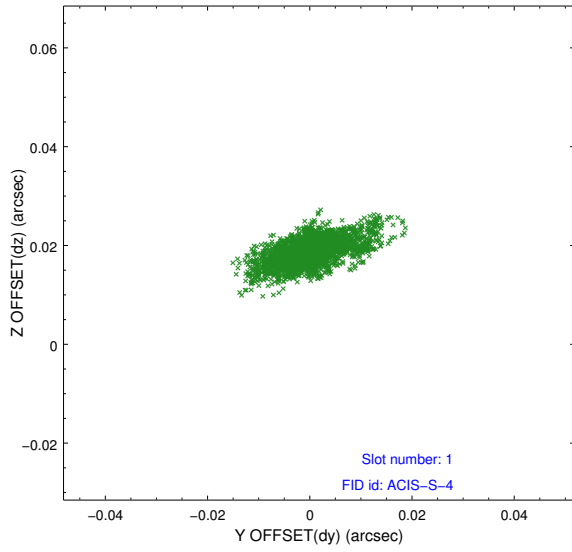


## 2.5 FID Slots

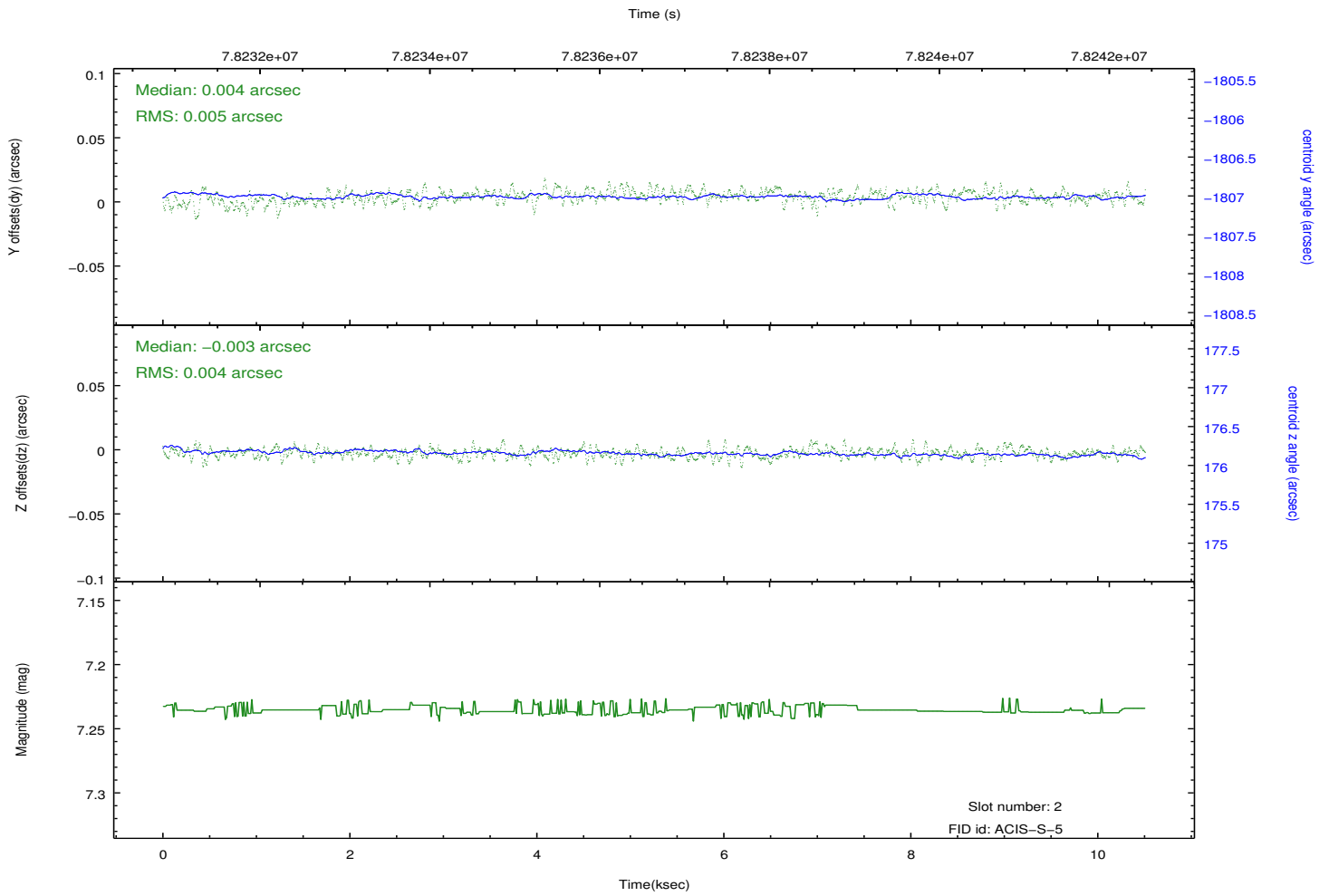
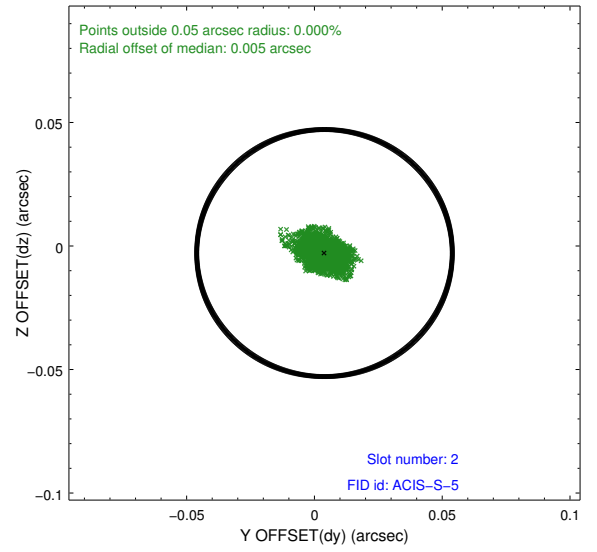
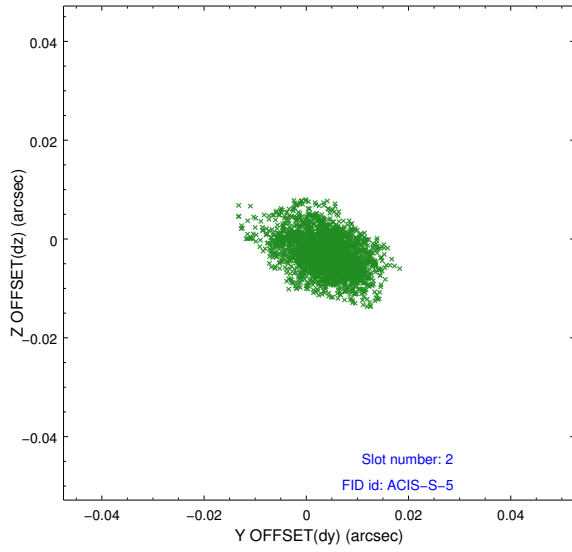
### 2.5.1 Slot 0



## 2.5.2 Slot 1



### 2.5.3 Slot 2



## A Summary

### A.1 Status

V&V Scientist	Jen Lauer
V&V Date (YYYY-MM-DD)	2012.09.04
V&V Edition	1
V&V Disposition and Status	OK
V&V Charge Time	10.276

### A.2 Comments