

V&V Reference Report

L2 ASCDS Version : 8.4.4

Observation 7441 - L2 Version 2
Chandra X-Ray Center

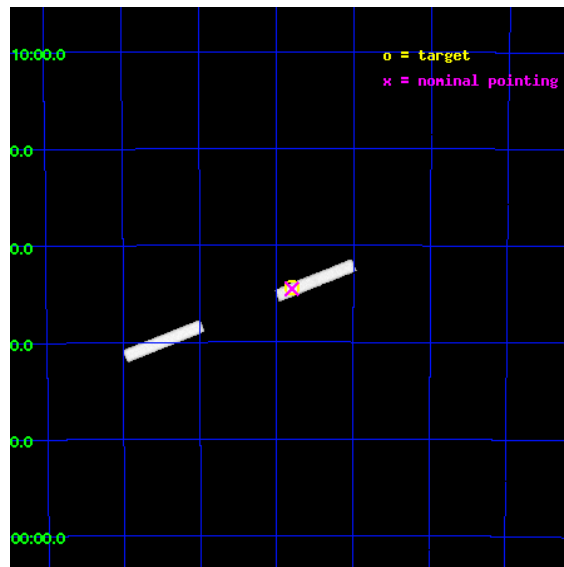
L2 Processing Date : Apr 25 2012

Contents

1	Front	2
2	OBI	3
2.1	OBI	3
2.1.1	Images	3
2.1.2	Bias	3
2.1.3	Parameters	4
2.1.4	Events	4
2.2	Compared Parameters	5
2.3	Aspect	6
2.4	Star Slots	9
2.4.1	Slot 3	9
2.4.2	Slot 4	10
2.4.3	Slot 5	11
2.4.4	Slot 6	12
2.4.5	Slot 7	13
2.5	FID Slots	14
2.5.1	Slot 0	14
2.5.2	Slot 1	15
2.5.3	Slot 2	16
A	Summary	17
A.1	Status	17
A.2	Comments	17

1 Front

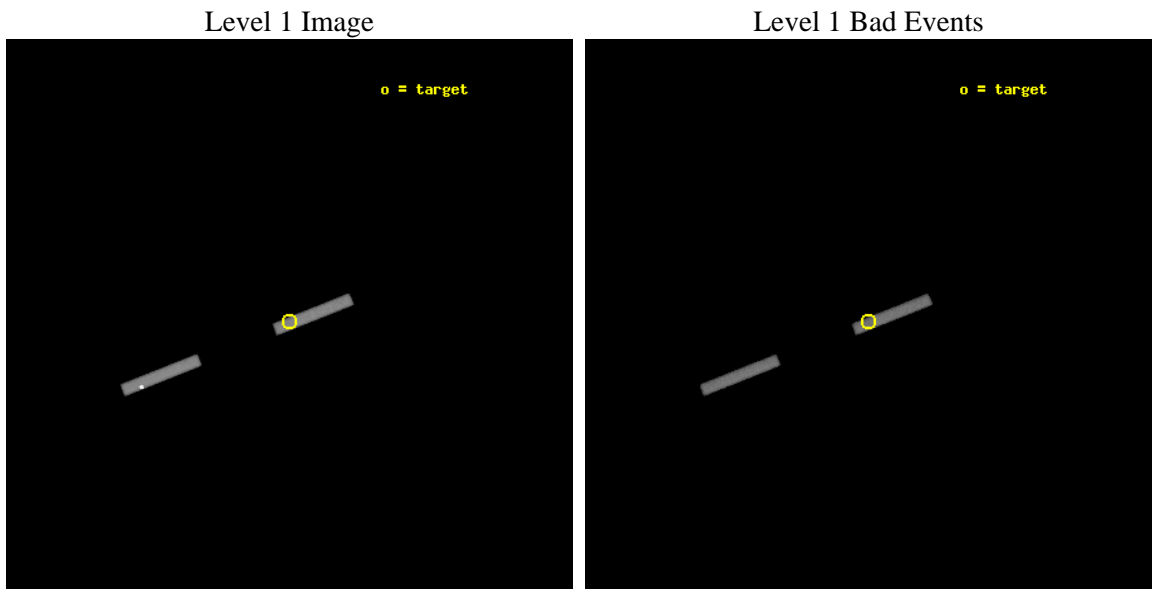
seq_num	200451	Sequence number
obs_id	7441	Observation id
title	MAGNETIC FIELDS ON 'ALIEN DWARFS' - II : CORONAL ACTIVITY IN THE ARCTURUS MOVING GROUP	Proposal title
observer	Dr. Alexander Brown	Principal investigator
object	HD145417	Source name
dtcycle	0	
cycle	P	events from which exps? Prim/Second/Both
ra_targ	243.449229	Observer's specified target RA [deg]
dec_targ	-57.573253	Observer's specified target Dec [deg]
ra_nom	243.45031604791	Nominal RA [deg]
dec_nom	-57.575228394487	Nominal Dec [deg]
roll_nom	338.41160320981	Nominal Roll [deg]
revision	2	Processing version of data
ontime	35167.0	Sum of GTIs [s]
livetime	32499.445512347	Livetime [s]
ontime5	35167.0	Sum of GTIs [s]
ontime7	35167.0	Sum of GTIs [s]
l2events	57633	Number of level 2 events



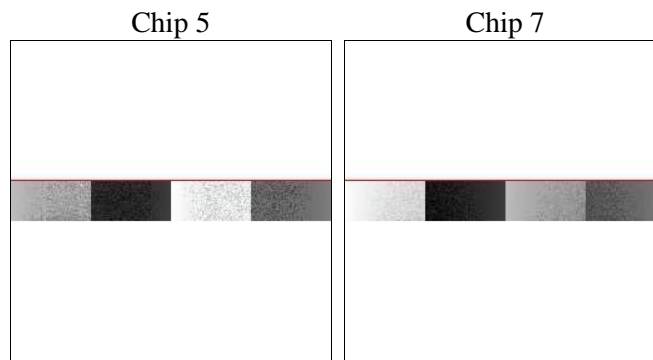
2 OBI

2.1 OBI

2.1.1 Images



2.1.2 Bias



2.1.3 Parameters

obi_num	0	Obi number	sched_exp_time	35000.000000	[s] Scheduled observation exposure time
ascdsver	8.4.4	Processing system revision	ontime	35167.0	Sum of GTIs [s]
caldbver	4.4.9	 	ontime5	35167.0	Sum of GTIs [s]
date	2012-04-25T22:02:41	Date and time of file creation	ontime7	35167.0	Sum of GTIs [s]
revision	2	Processing version of data	ll events	182323	Number of level 1 events

2.1.4 Events

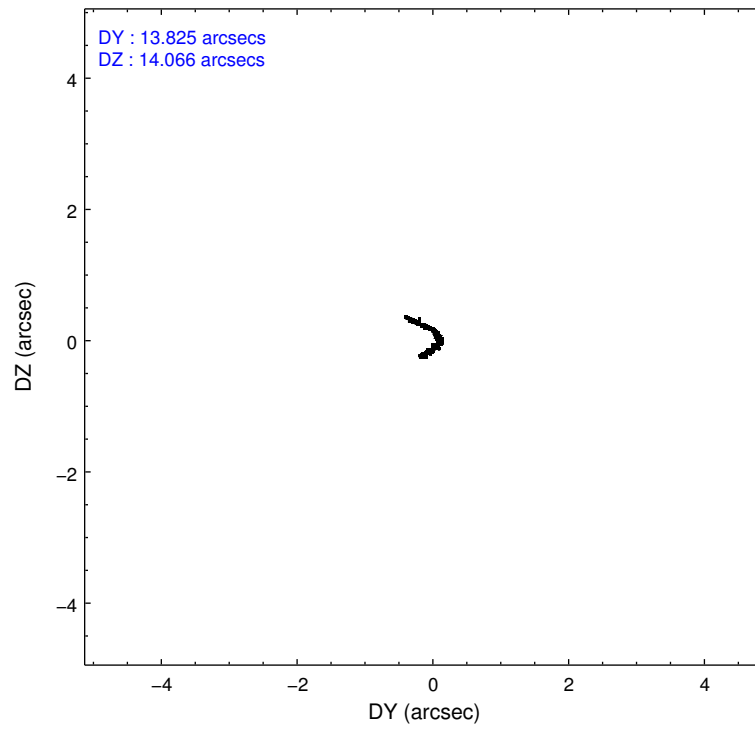
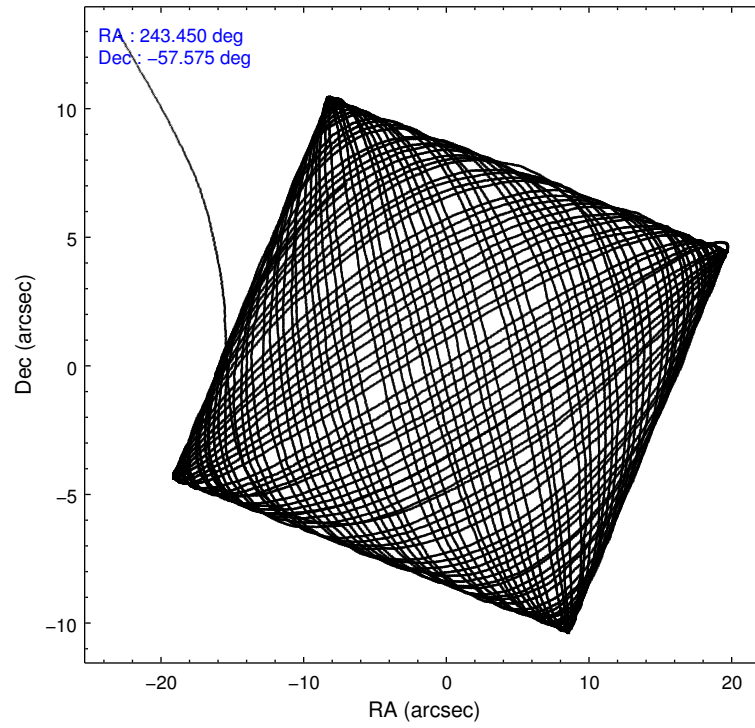
	ccd 5	ccd 7
level 1 events	120945	61378
rejected events	34900	33521
rejected %	28%	54%

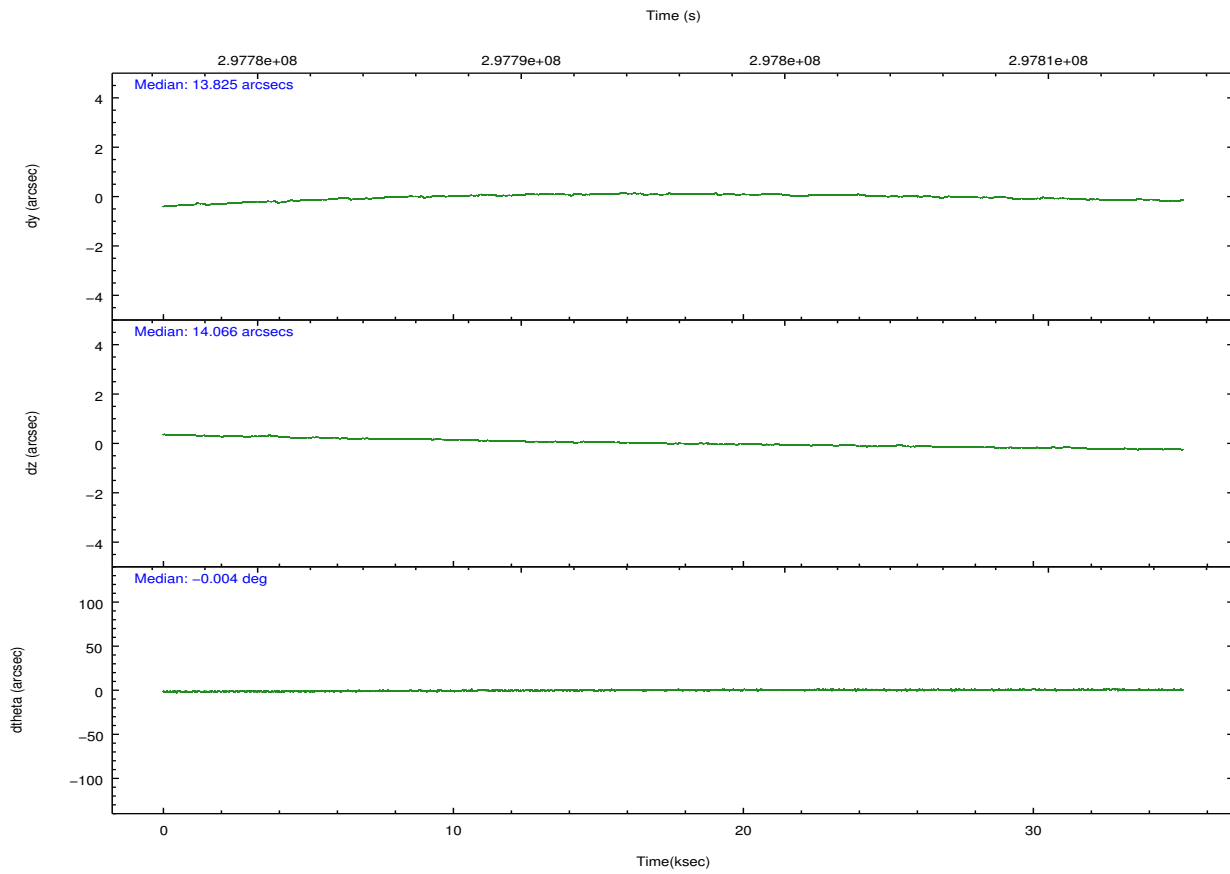
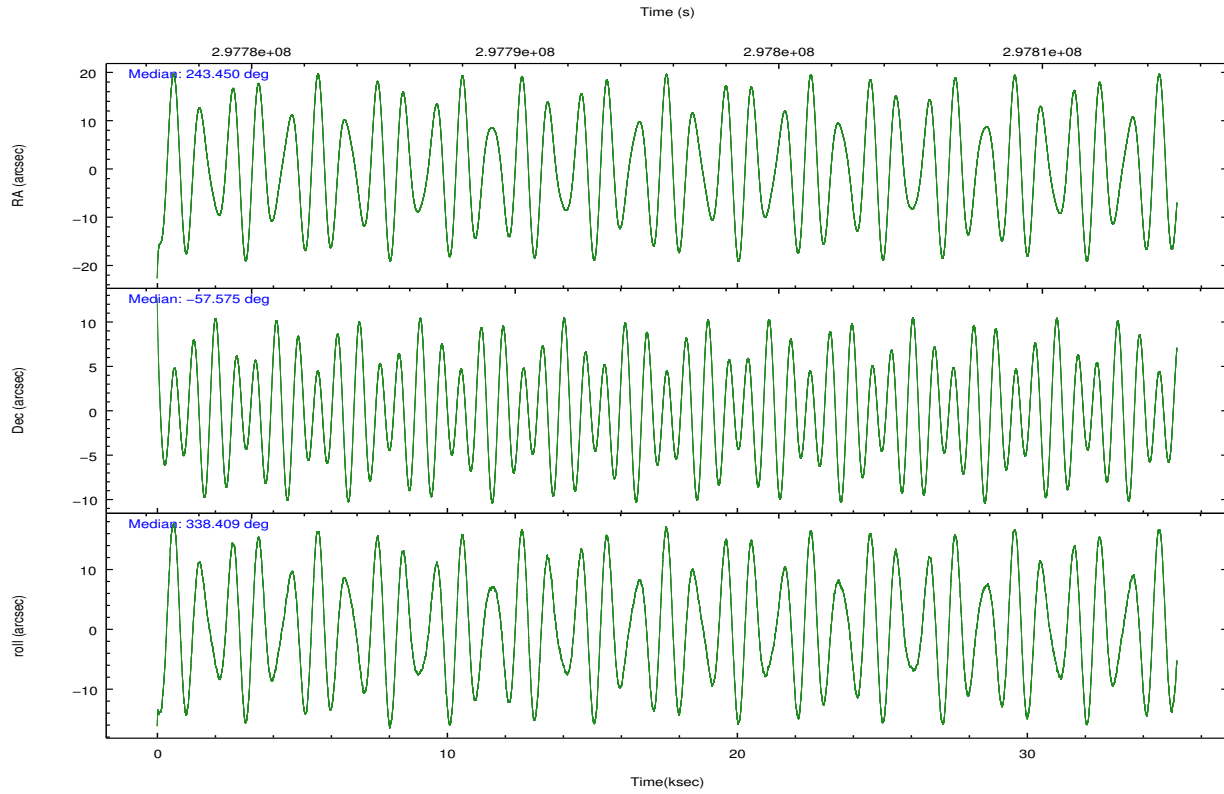
	ccd 5	ccd 7
grade 0 events	42642	2919
	35%	4%
grade 1 events	139	71
	0%	0%
grade 2 events	23917	5606
	19%	9%
grade 3 events	2609	3414
	2%	5%
grade 4 events	2788	3223
	2%	5%
grade 5 events	5614	5690
	4%	9%
grade 6 events	15407	13088
	12%	21%
grade 7 events	27829	27367
	23%	44%

2.2 Compared Parameters

Parameter	Planned	Actual	Parameter	Planned	Actual
Instrument	ACIS	ACIS	Obspar format version number	7	7
Detector	ACIS-57	ACIS-57	Obspar file type	PREDICTED	ACTUAL
Grating	NONE	NONE	Obspar update status	NONE	UPDATED
Data mode	VFAINT	VFAINT	Number of optional ACIS chips dropped	0	0
Observation mode	POINTING	POINTING	On-chip summing requested	N	N
[deg] Pointing RA	243.399996	243.4503160479111	Subarray requested	CUSTOM	1/8
[deg] Pointing Dec	-57.579578	-57.57522839448717	Subarray start row	449	449
[deg] Pointing Roll	338.212502	338.411603209813	Subarray row count	128	128
[mm] SIM focus pos	-0.684267	-0.6828225247311905	Alternating exposures requested	N	N
[mm] SIM defocus	0	0.001444936568705701	[s] Primary exposure time	0.000000	0.5
[mm] SIM translation stage pos	-190.132523	-190.1400660498719			
[mm] SIM translation stage offset	0	0.00754346686406393			
[s] Observation start time (MET)	297778335.184000	297777437.14844			
Observation start date	2007-06-09T12:11:10	2007-06-09T11:57:17			
[s] Observation end time (MET)	297813335.184000	297814342.78771			
Observation end date	2007-06-09T21:54:30	2007-06-09T22:12:22			
Read mode	TIMED	TIMED			

2.3 Aspect



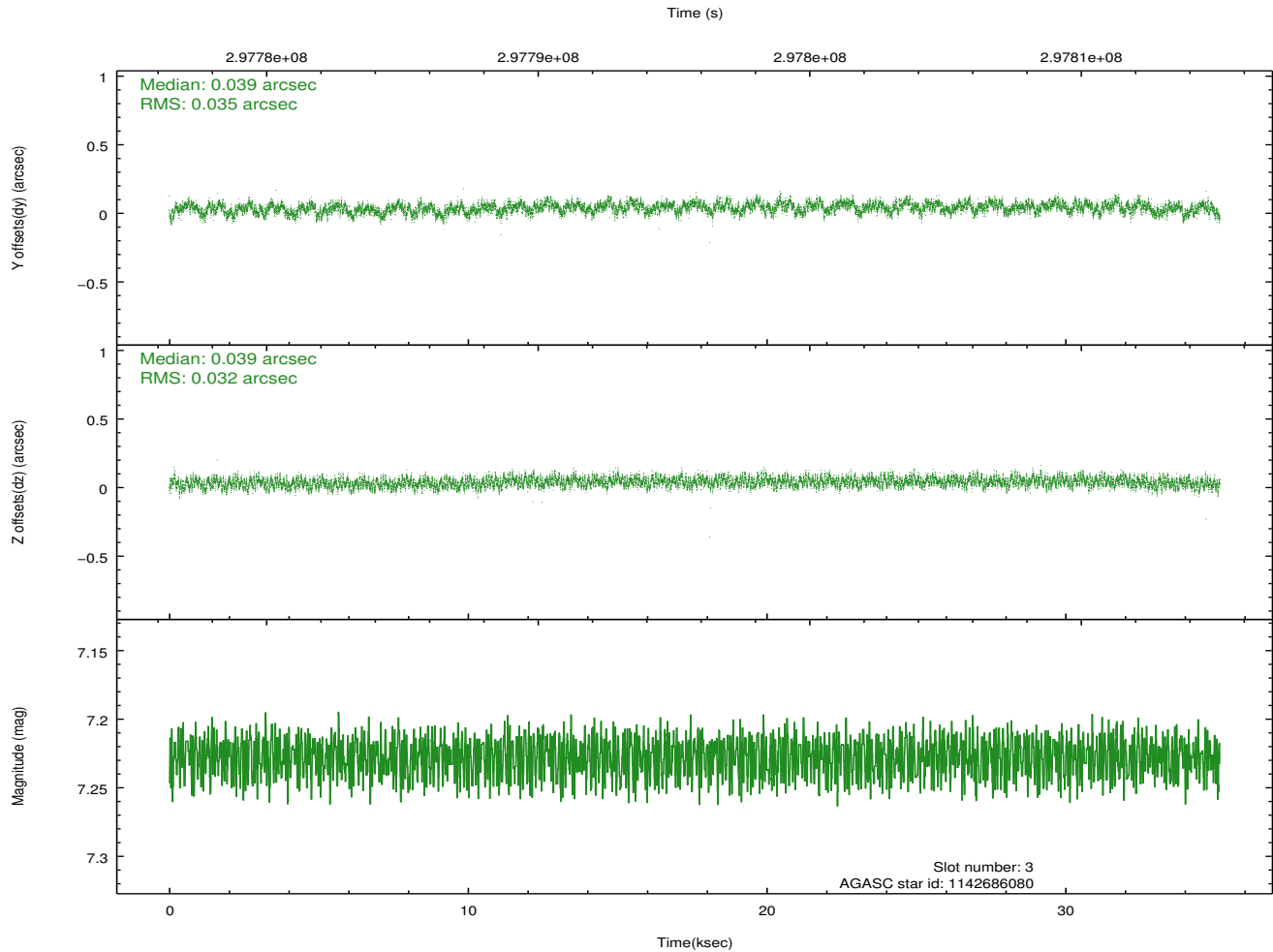
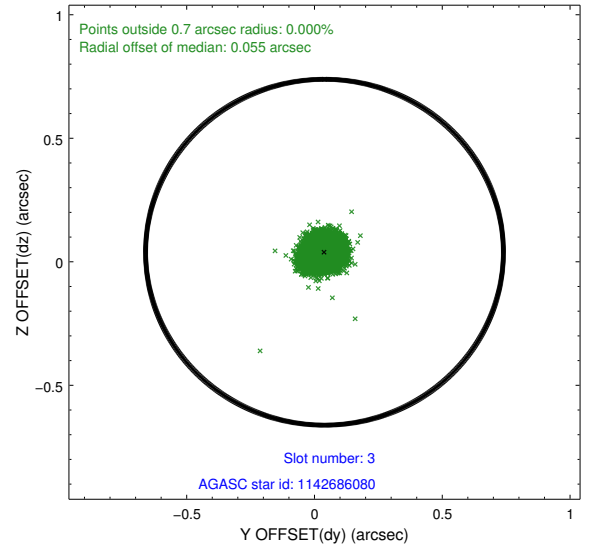
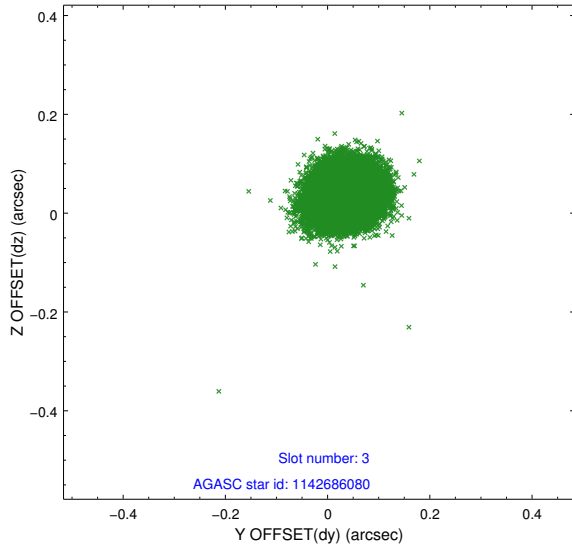


Slot Statistics

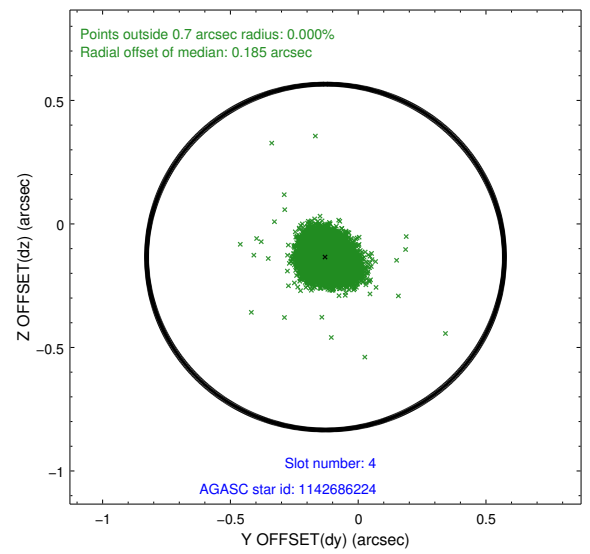
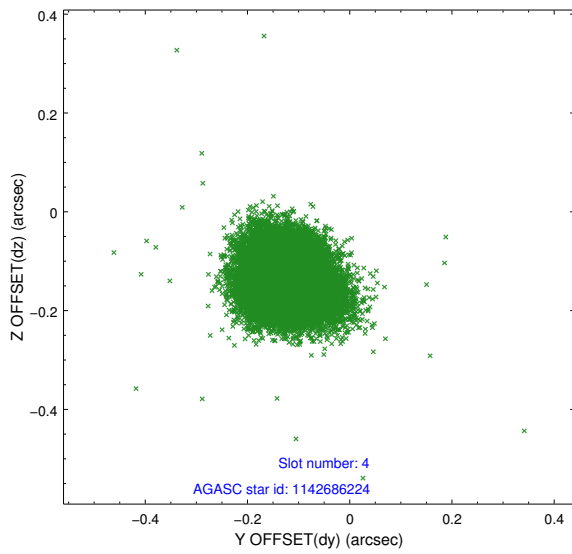
slot	status	id	mag	n_pts	med_dy	med_dz	dr1	dr2	ra	dec	mean_y	mean_z
0	FID	ACIS-S-2	7.10	8578	-0.060	-0.058	0.009	0.016	0.000000	0.000000	-766.78	-1735.50
1	FID	ACIS-S-4	7.19	8578	0.199	0.044	0.009	0.018	0.000000	0.000000	2146.73	173.05
2	FID	ACIS-S-5	7.22	8578	-0.171	0.022	0.009	0.017	0.000000	0.000000	-1819.69	166.73
3	GUIDE	1142686080	7.23	17154	0.039	0.039	0.051	0.081	242.522822	-57.759754	-1319.00	-1237.47
4	GUIDE	1142686224	8.48	17149	-0.128	-0.134	0.069	0.112	242.762343	-57.425135	-1351.68	52.13
5	GUIDE	1142822840	6.72	17156	-0.065	0.062	0.048	0.082	243.522754	-58.039051	831.59	-1448.83
6	GUIDE	1142826360	8.90	17146	0.059	0.077	0.069	0.111	244.511220	-57.250325	1576.69	1886.86
7	GUIDE	1142821992	8.70	17148	0.093	-0.046	0.070	0.113	244.656647	-57.696124	2409.38	487.31

2.4 Star Slots

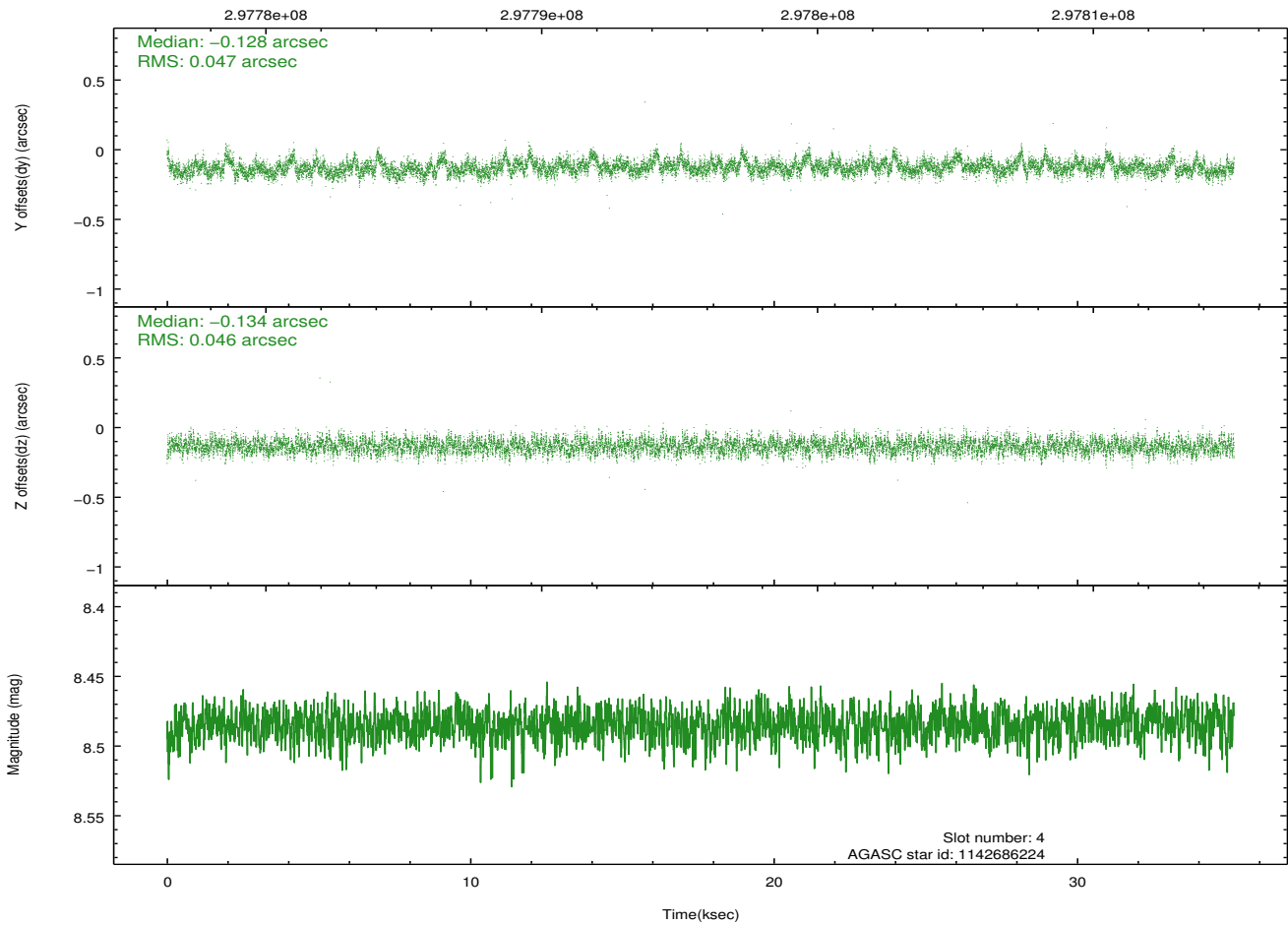
2.4.1 Slot 3



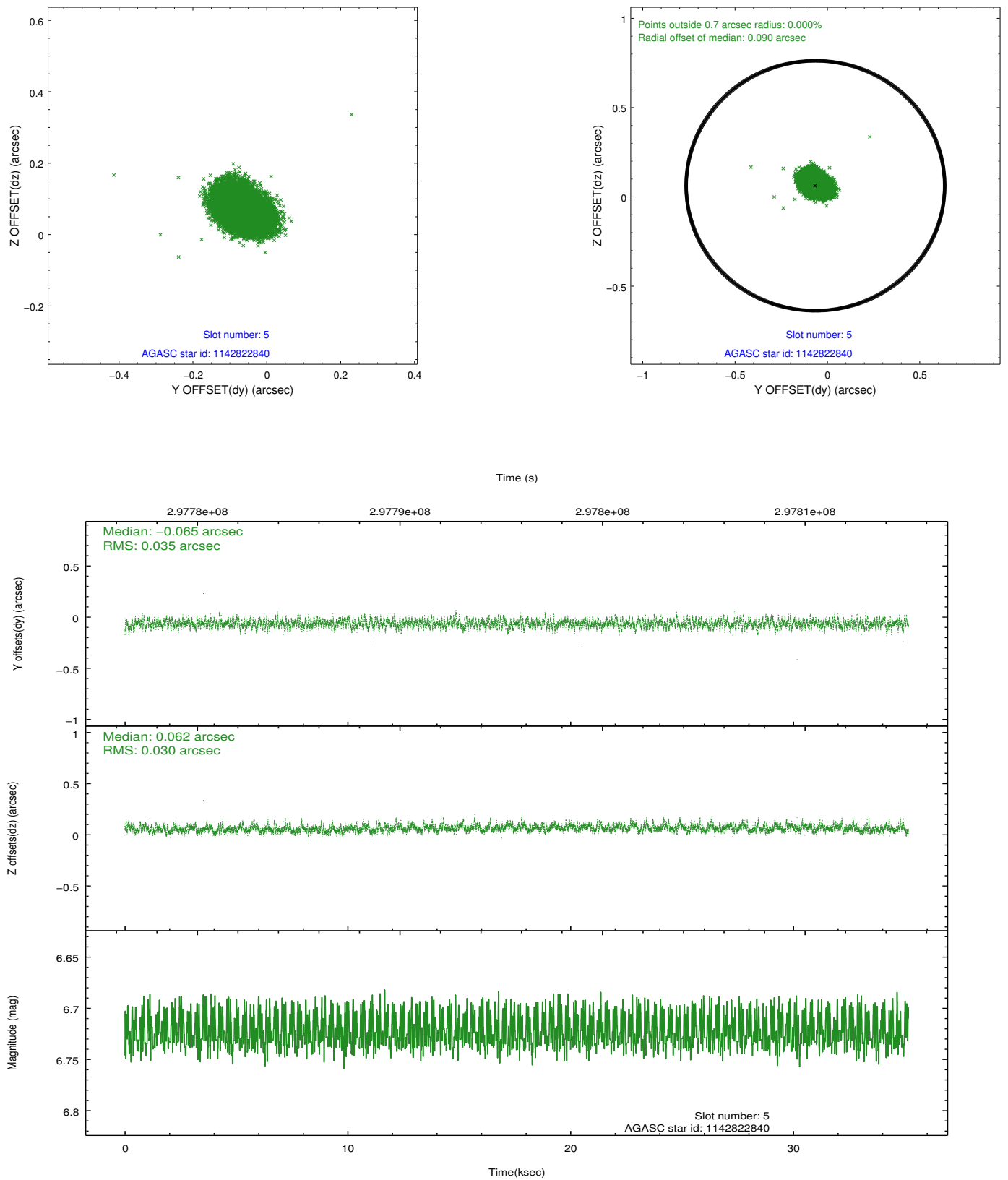
2.4.2 Slot 4



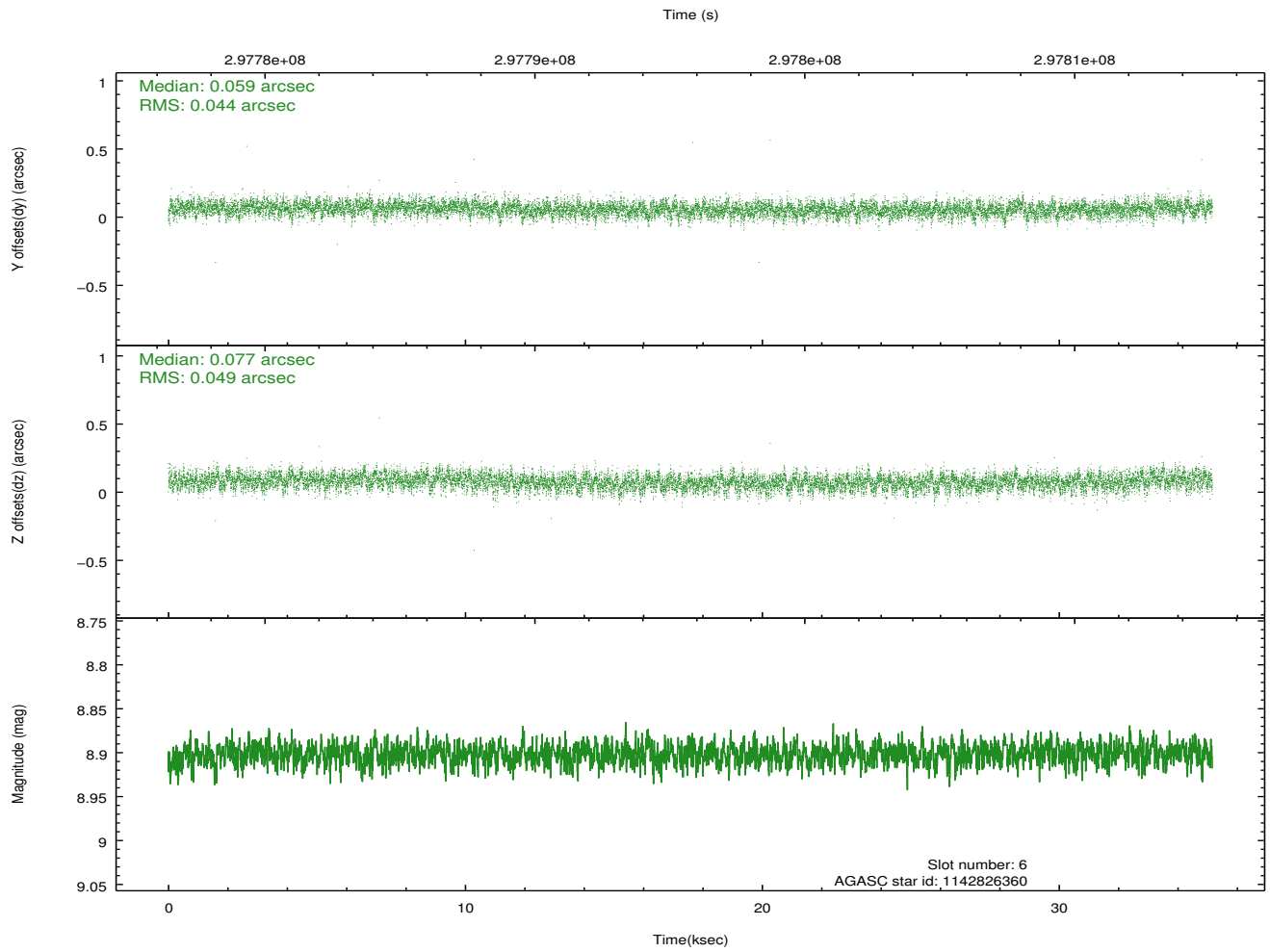
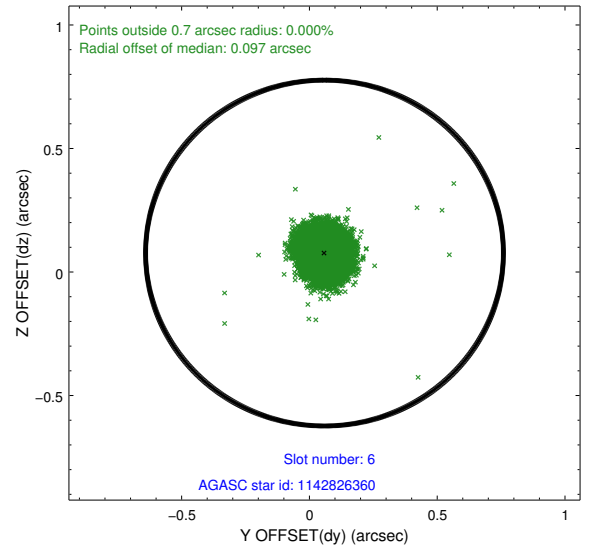
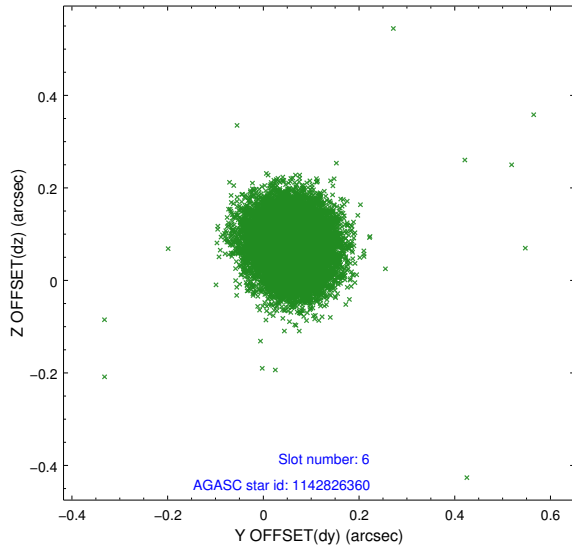
Time (s)



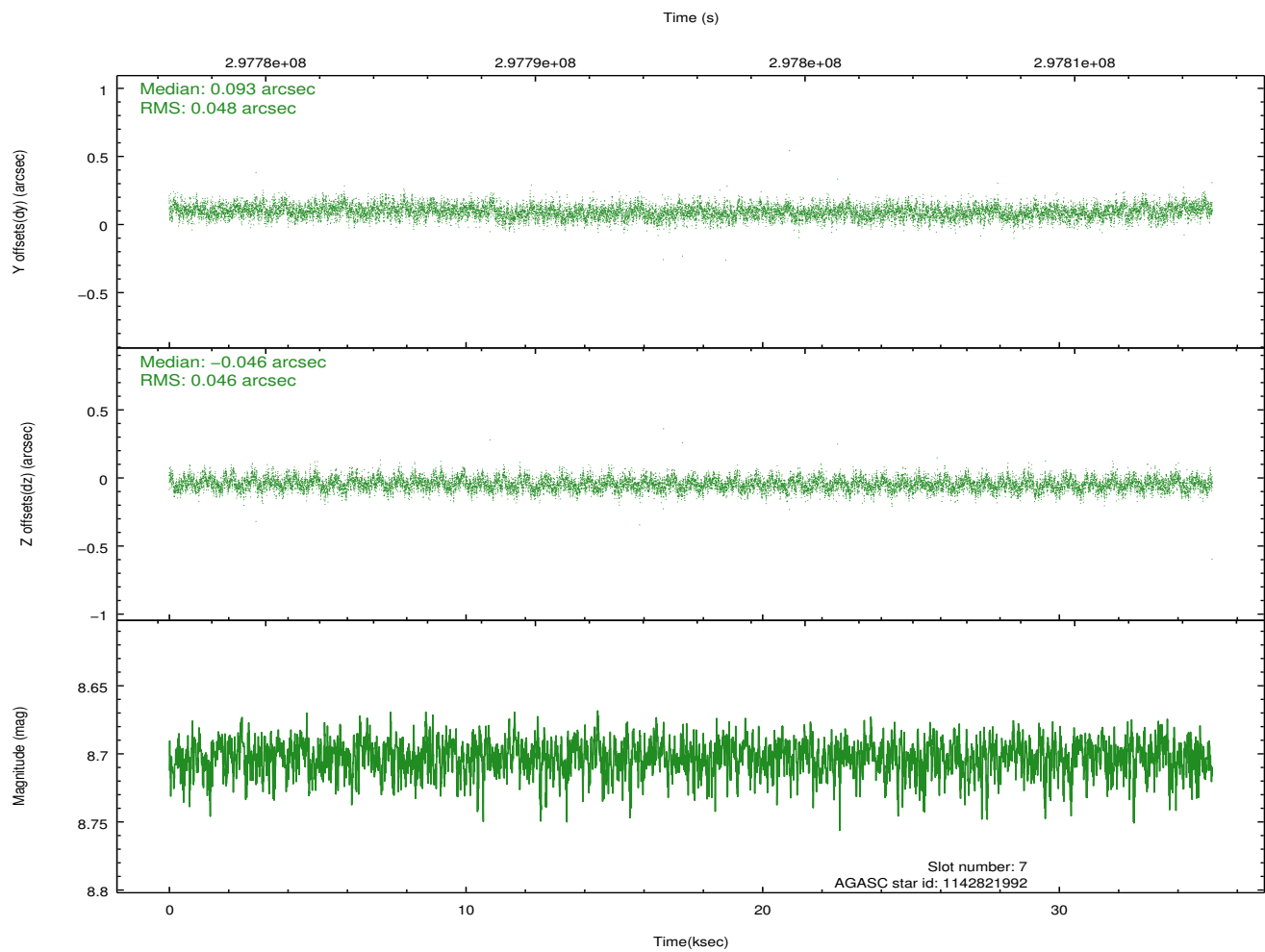
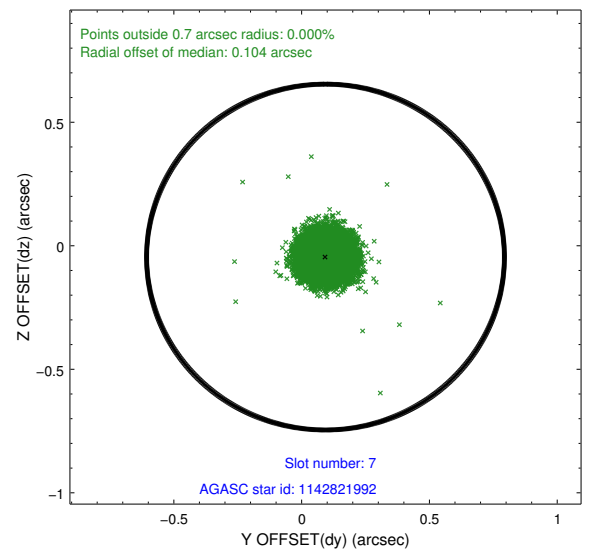
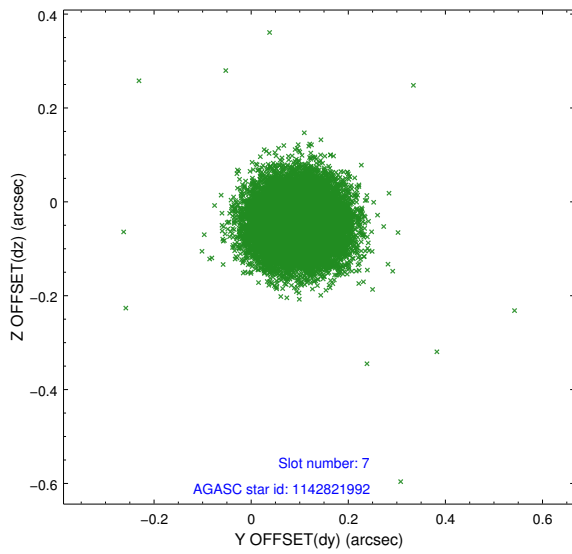
2.4.3 Slot 5



2.4.4 Slot 6

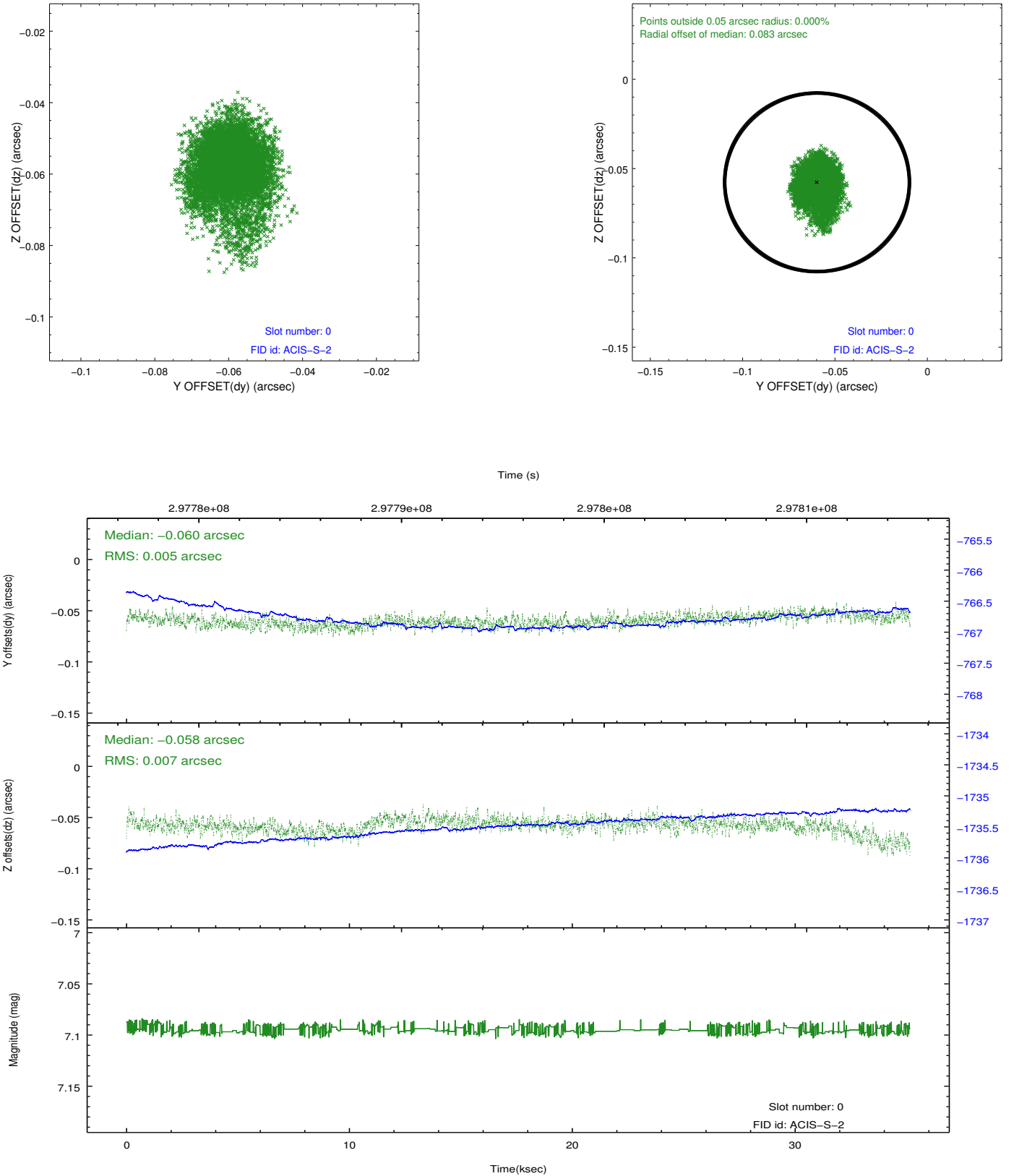


2.4.5 Slot 7

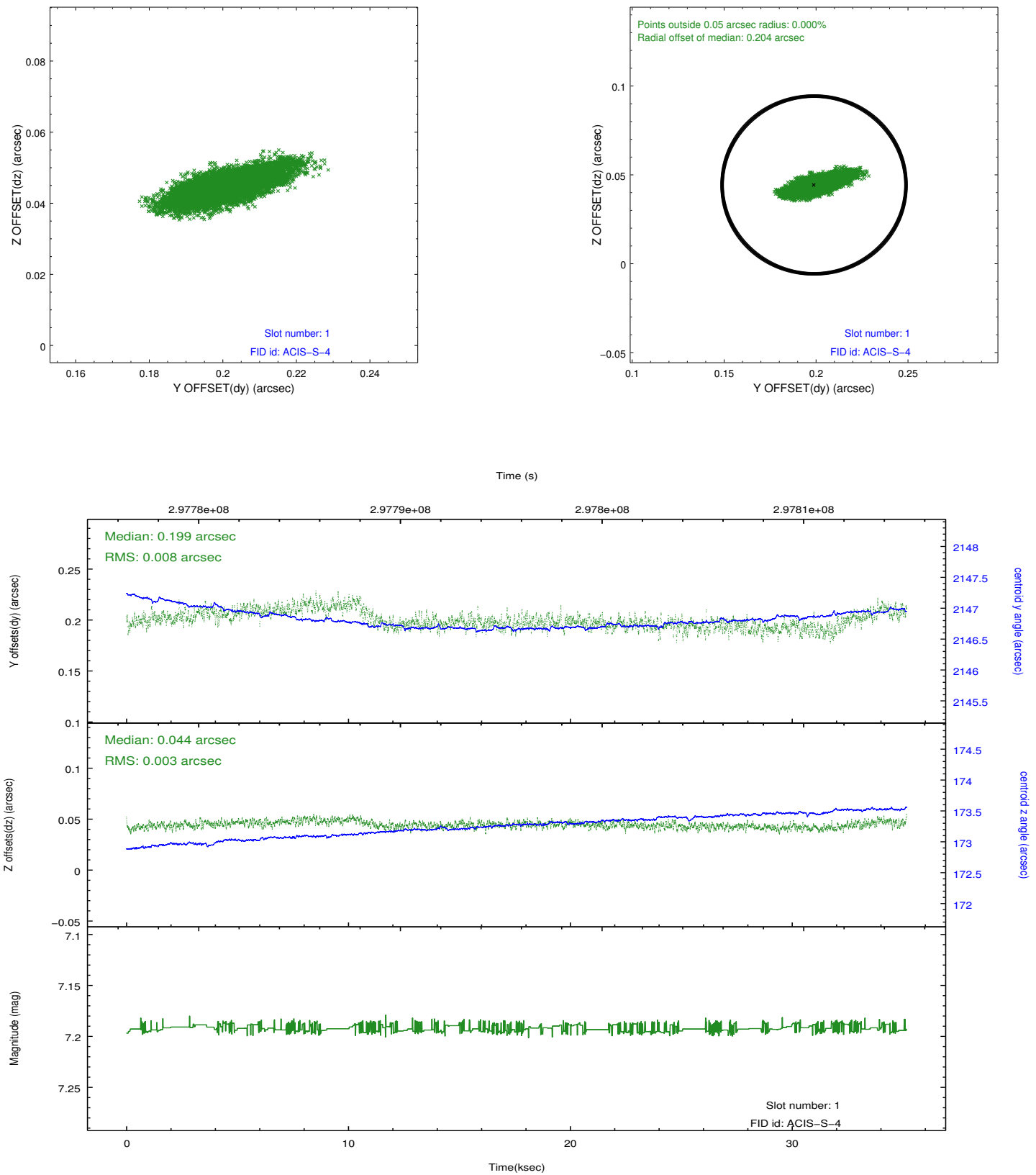


2.5 FID Slots

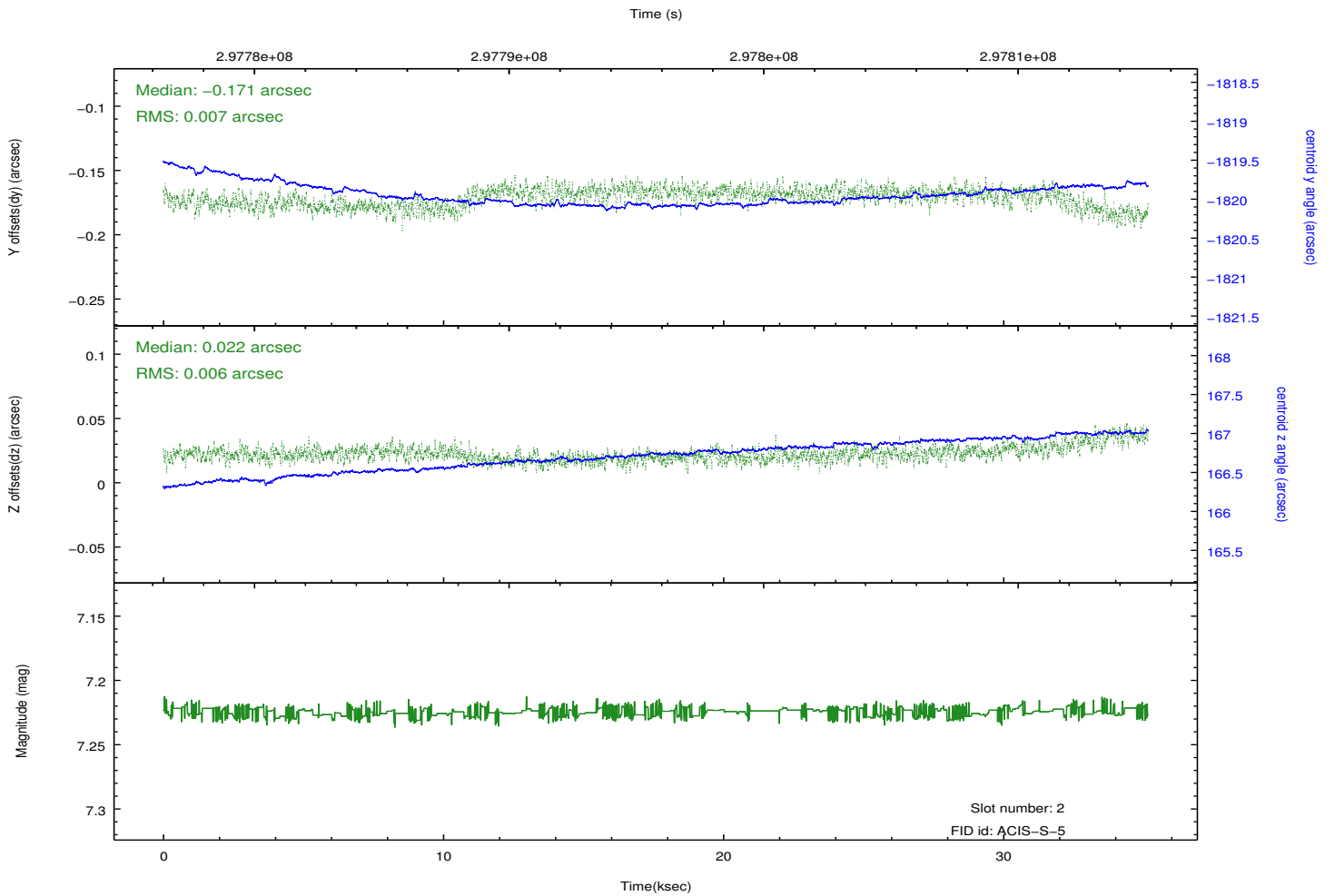
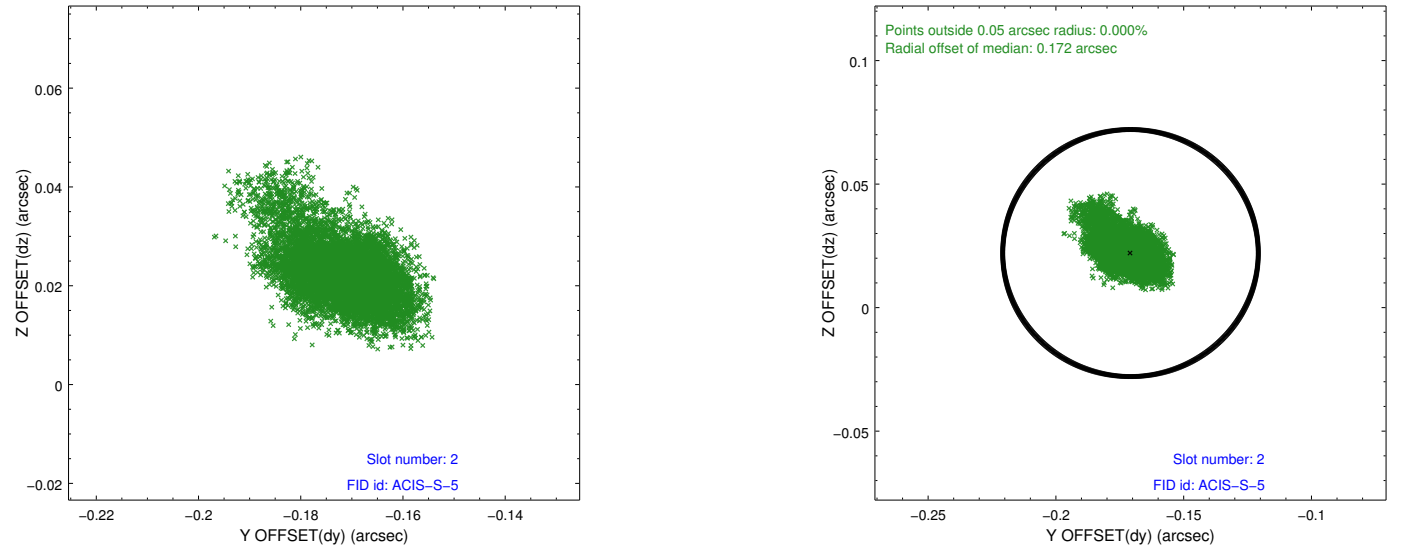
2.5.1 Slot 0



2.5.2 Slot 1



2.5.3 Slot 2



A Summary

A.1 Status

V&V Scientist	Jen Lauer
V&V Date (YYYY-MM-DD)	2012.04.26
V&V Edition	1
V&V Disposition and Status	OK
V&V Charge Time	35.167

A.2 Comments