

V&V Reference Report

L2 ASCDS Version : 8.4.3.1

Observation 7901 - L2 Version 2
Chandra X-Ray Center

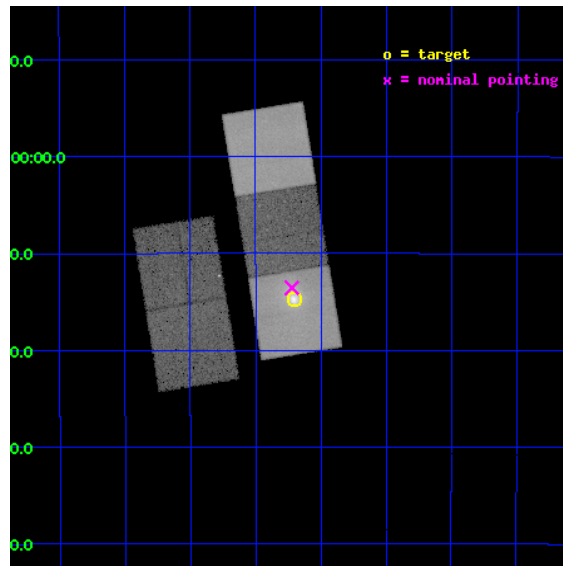
L2 Processing Date : Apr 14 2012

Contents

1	Front	2
2	OBI	3
2.1	OBI	3
2.1.1	Images	3
2.1.2	Bias	3
2.1.3	Parameters	4
2.1.4	Events	4
2.2	Compared Parameters	5
2.3	Aspect	6
2.4	Star Slots	9
2.4.1	Slot 3	9
2.4.2	Slot 4	10
2.4.3	Slot 5	11
2.4.4	Slot 6	12
2.4.5	Slot 7	13
2.5	FID Slots	14
2.5.1	Slot 0	14
2.5.2	Slot 1	15
2.5.3	Slot 2	16
A	Summary	17
A.1	Status	17
A.2	Comments	17

1 Front

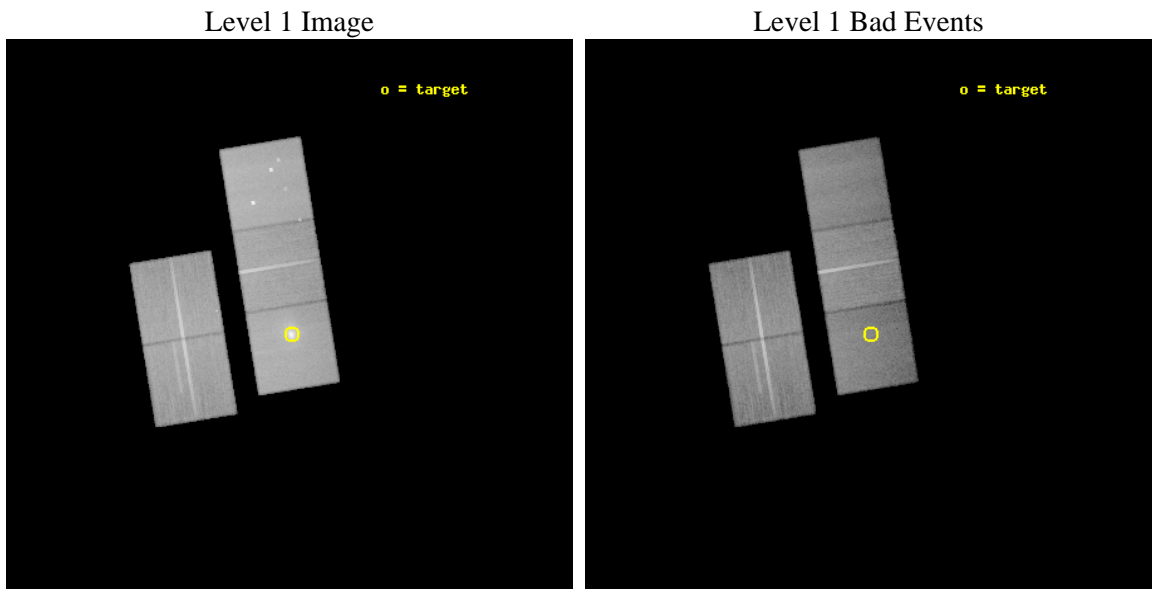
seq_num	800619	Sequence number
obs_id	7901	Observation id
title	AGN Feedback and Galaxy Formation in Cluster Cores	Proposal title
observer	Prof. Brian McNamara	Principal investigator
object	Abell 1664	Source name
dtycycle	0	
cycle	P	events from which exps? Prim/Second/Both
ra_targ	195.925	Observer's specified target RA [deg]
dec_targ	-24.246111	Observer's specified target Dec [deg]
ra_nom	195.93053733904	Nominal RA [deg]
dec_nom	-24.225958333736	Nominal Dec [deg]
roll_nom	80.722369608357	Nominal Roll [deg]
revision	2	Processing version of data
ontime	37041.900284886	Sum of GTIs [s]
liveltime	36557.920587814	Livetime [s]
ontime2	37041.832701802	Sum of GTIs [s]
ontime3	37029.309820831	Sum of GTIs [s]
ontime5	37041.900284886	Sum of GTIs [s]
ontime6	37032.477373898	Sum of GTIs [s]
ontime7	37041.900284886	Sum of GTIs [s]
l2events	460103	Number of level 2 events



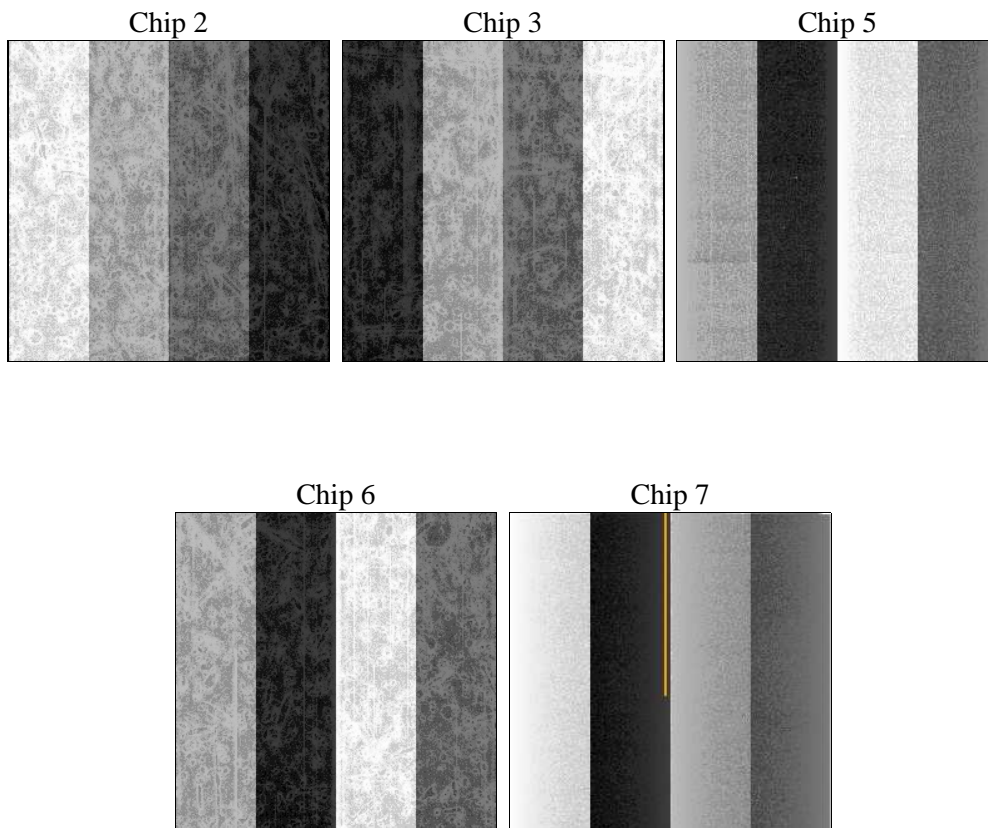
2 OBI

2.1 OBI

2.1.1 Images



2.1.2 Bias



2.1.3 Parameters

obi_num	0	Obi number	sched_exp_time	37000.000000	[s] Scheduled observation exposure time
ascdsver	8.4.3.1	Processing system revision	ontime	37041.900284886	Sum of GTIs [s]
caldsver	4.4.9	 	ontime2	37041.832701802	Sum of GTIs [s]
date	2012-04-14T18:25:35	Date and time of file creation	ontime3	37029.309820831	Sum of GTIs [s]
revision	2	Processing version of data	ontime5	37041.900284886	Sum of GTIs [s]
			ontime6	37032.477373898	Sum of GTIs [s]
			ontime7	37041.900284886	Sum of GTIs [s]
			l1events	1652314	Number of level 1 events

2.1.4 Events

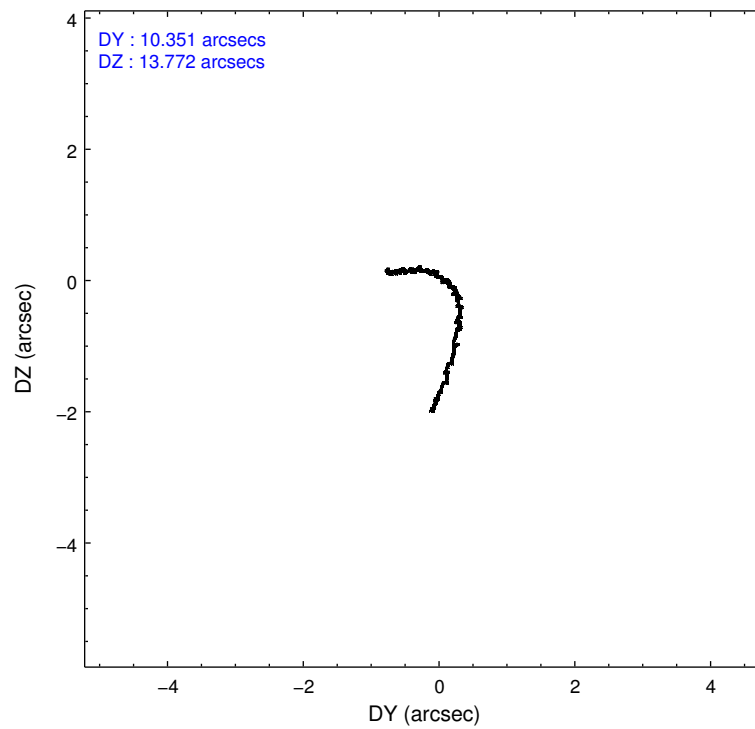
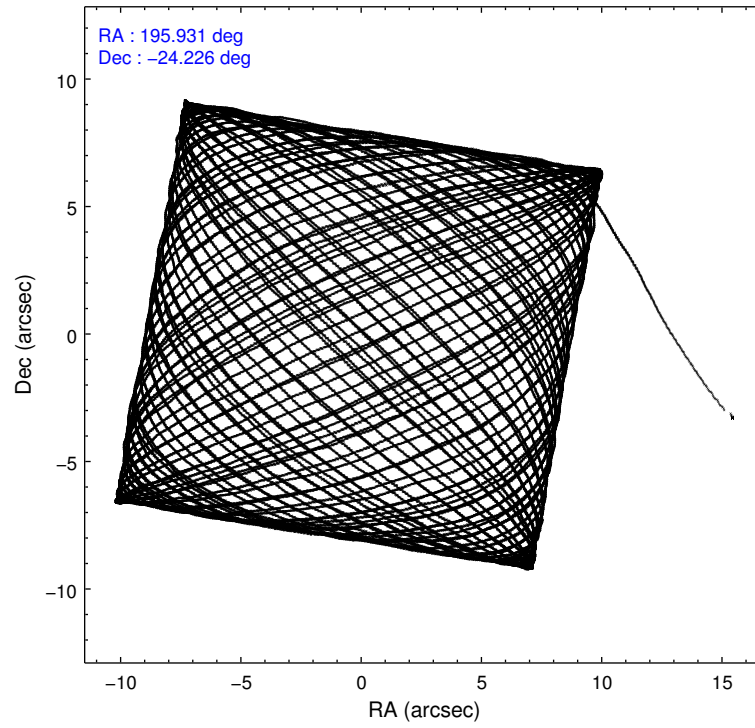
	ccd 2	ccd 3	ccd 5	ccd 6	ccd 7
level 1 events	298918	278259	400581	292079	382477
rejected events	270722	251717	199779	260859	174413
rejected %	90%	90%	49%	89%	45%

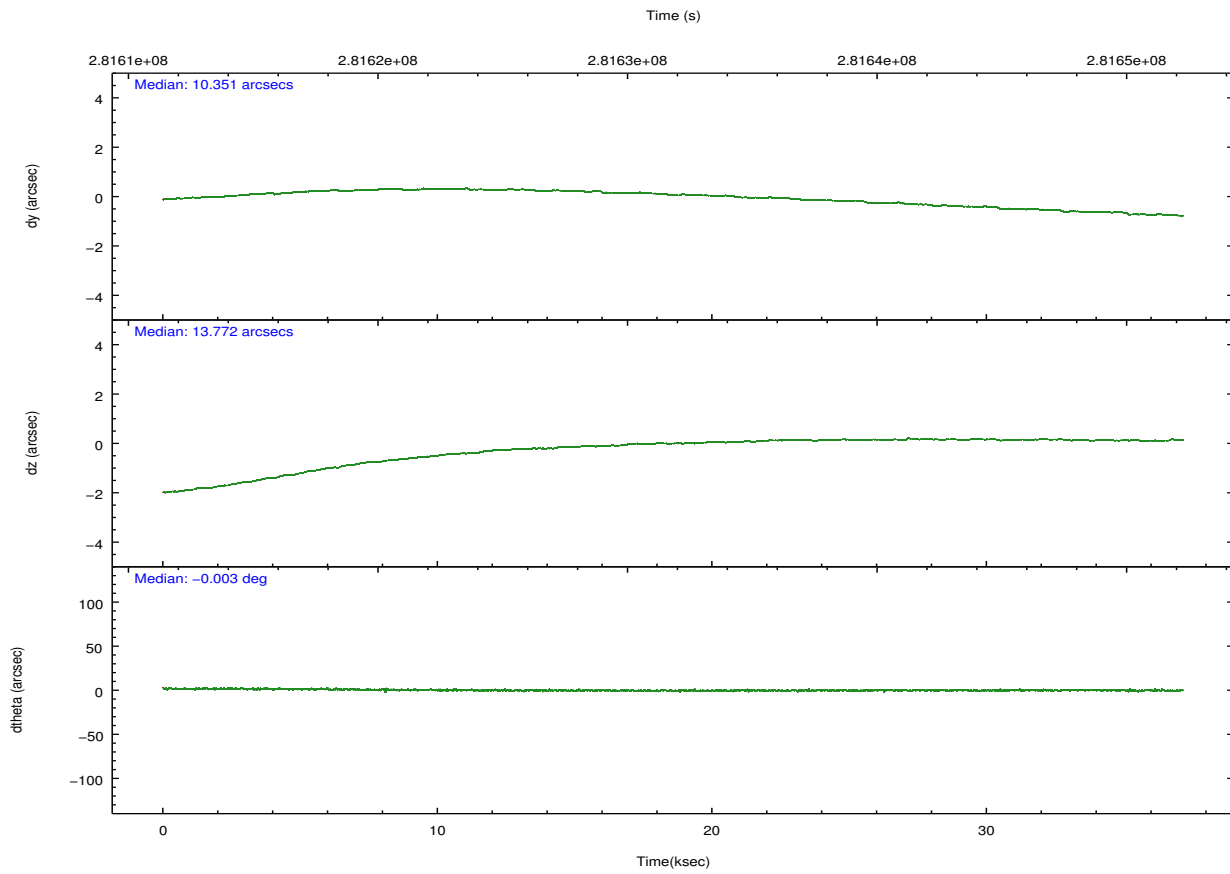
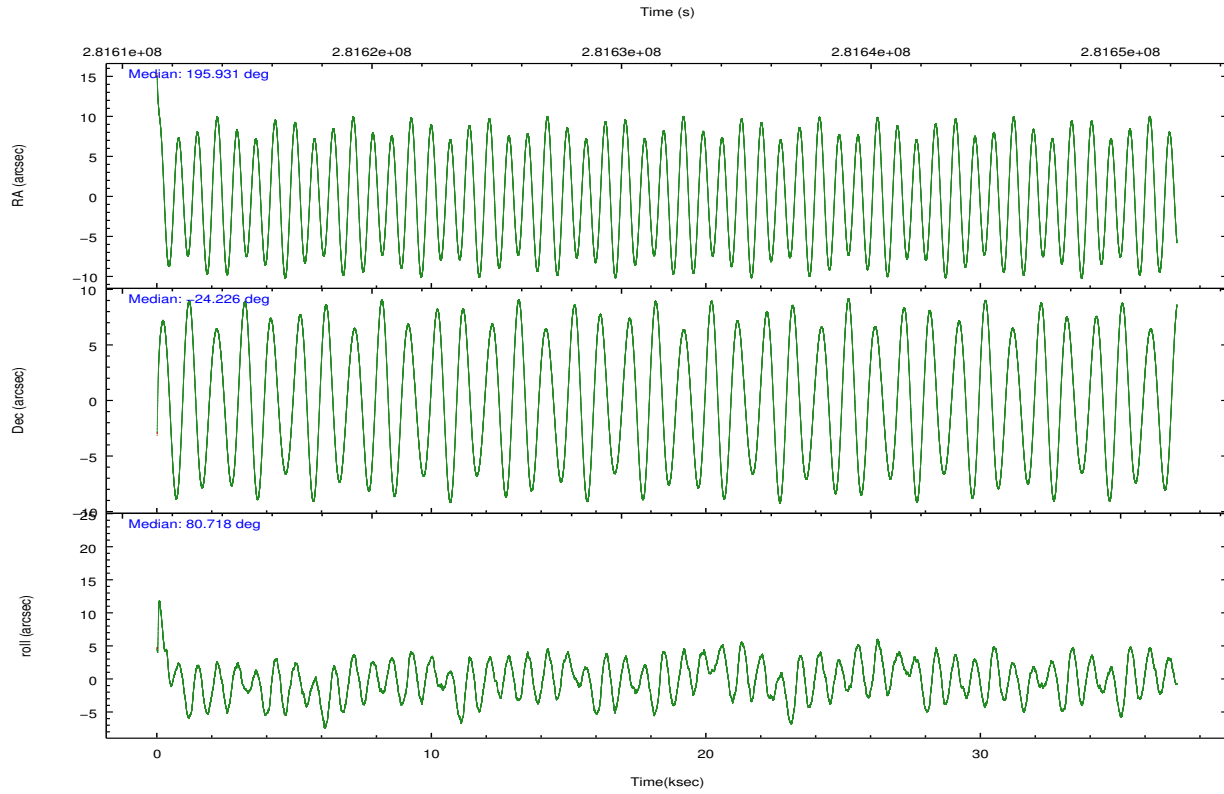
	ccd 2	ccd 3	ccd 5	ccd 6	ccd 7
grade 0 events	10434	9247	26076	11841	32653
	3%	3%	6%	4%	8%
grade 1 events	152	142	816	136	397
	0%	0%	0%	0%	0%
grade 2 events	6520	5776	56912	6677	45737
	2%	2%	14%	2%	11%
grade 3 events	3083	3103	8229	3331	21068
	1%	1%	2%	1%	5%
grade 4 events	3060	3041	7831	3151	20831
	1%	1%	1%	1%	5%
grade 5 events	9113	11097	31113	11698	33901
	3%	3%	7%	4%	8%
grade 6 events	5104	5381	101793	6223	87811
	1%	1%	25%	2%	22%
grade 7 events	261452	240472	167811	249022	140079
	87%	86%	41%	85%	36%

2.2 Compared Parameters

Parameter	Planned	Actual	Parameter	Planned	Actual
Instrument	ACIS	ACIS	Obspar format version number	7	7
Detector	ACIS-23567	ACIS-23567	Obspar file type	PREDICTED	ACTUAL
Grating	NONE	NONE	Obspar update status	NONE	UPDATED
Data mode	VFAINT	VFAINT	CCD I0 on	N	N
Observation mode	POINTING	POINTING	CCD I1 on	N	N
[deg] Pointing RA	195.941478	195.9305373390443	CCD I2 on	O1	Y
[deg] Pointing Dec	-24.251311	-24.22595833373568	CCD I3 on	Y	Y
[deg] Pointing Roll	80.570246	80.72236960835744	CCD S0 on	N	N
[mm] SIM focus pos	-0.684267	-0.6828225247311905	CCD S1 on	Y	Y
[mm] SIM defocus	0	0.001444936568705701	CCD S2 on	Y	Y
[mm] SIM translation stage pos	-190.132523	-190.1425803651734	CCD S3 on	Y	Y
[mm] SIM translation stage offset	0	0.01005778216563158	CCD S4 on	N	N
[s] Observation start time (MET)	281613410.184000	281612476.05476	CCD S5 on	N	N
Observation start date	2006-12-04T09:55:45	2006-12-04T09:41:16	Number of optional ACIS chips dropped	0	0
[s] Observation end time (MET)	281650410.184000	281651327.14409	On-chip summing requested	N	N
Observation end date	2006-12-04T20:12:25	2006-12-04T20:28:47	Subarray requested	NONE	NONE
Read mode	TIMED	TIMED	Alternating exposures requested	N	N
			[s] Primary exposure time	0.000000	3.1

2.3 Aspect



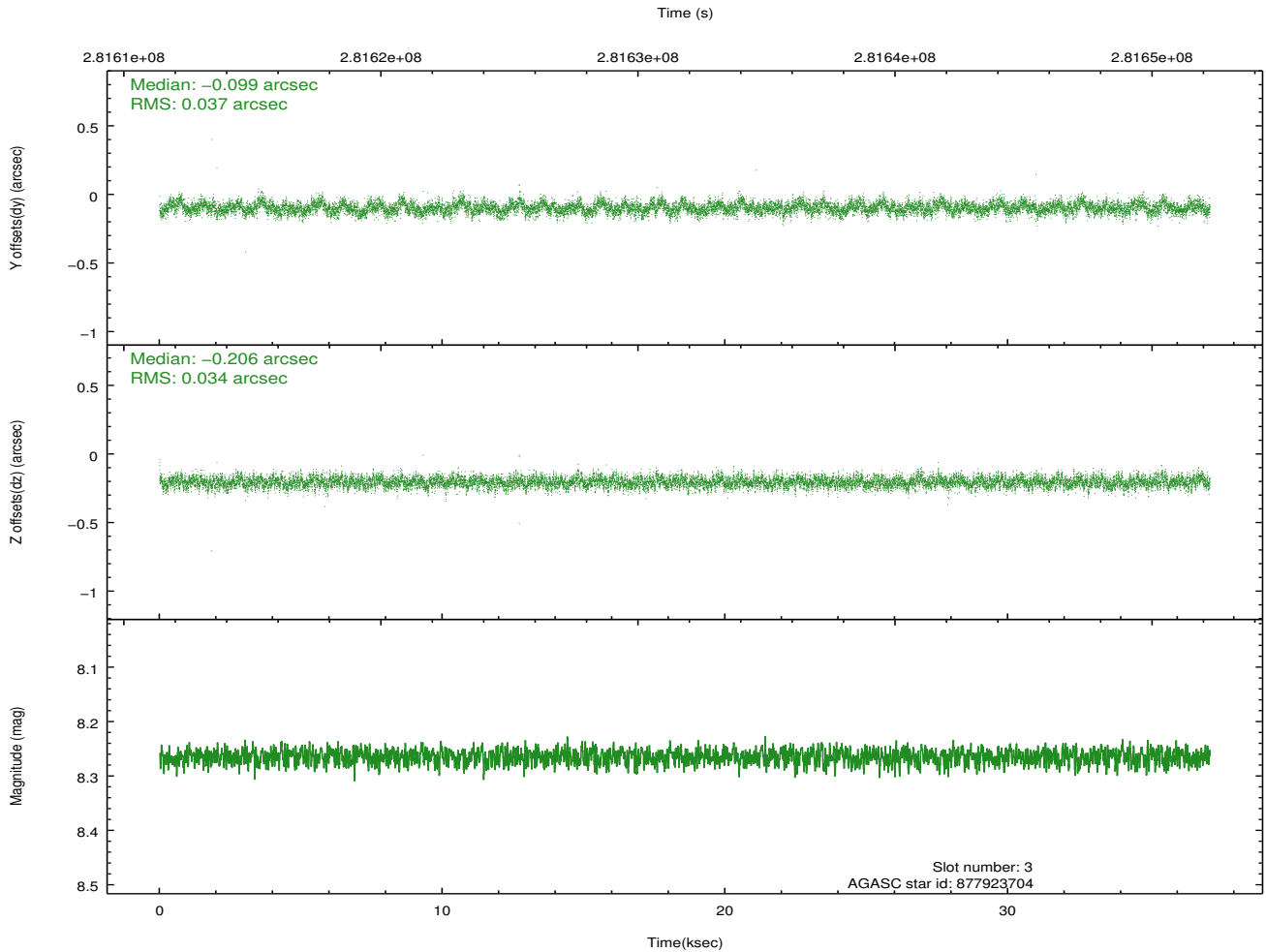
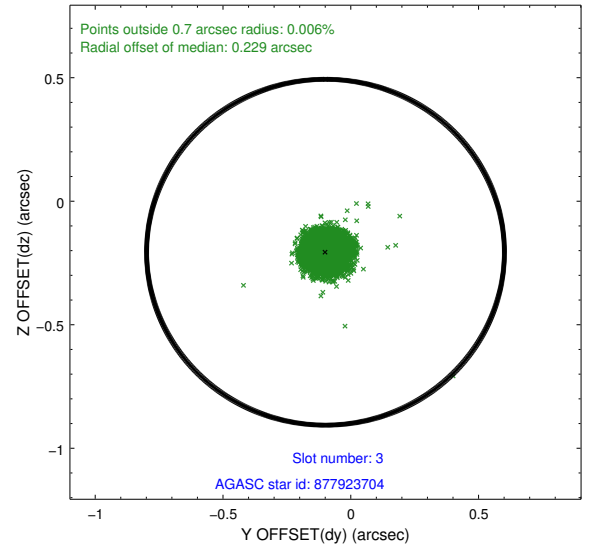
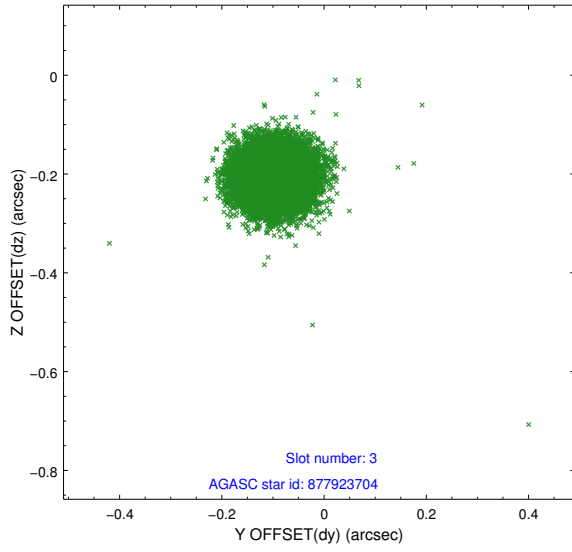


Slot Statistics

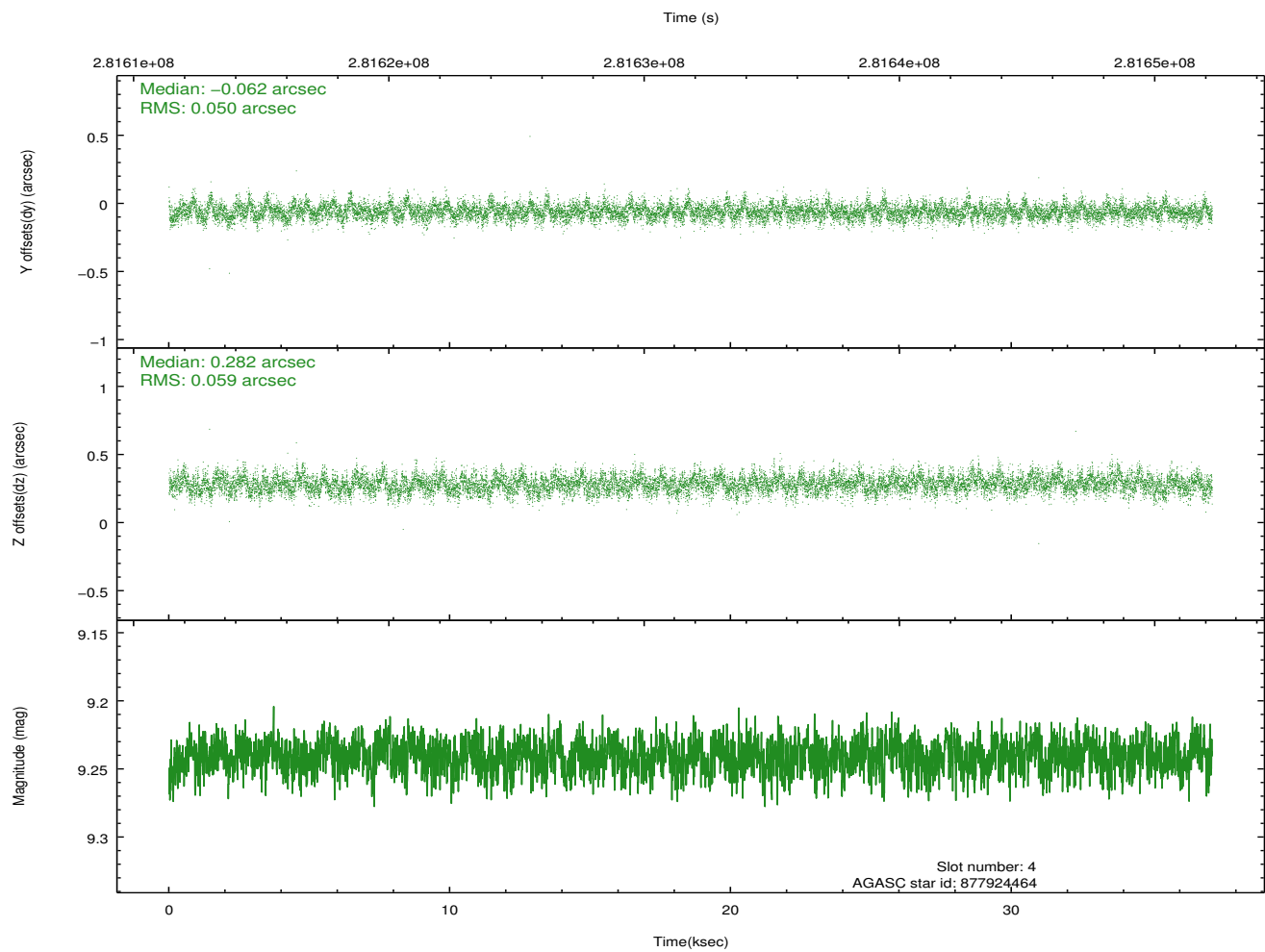
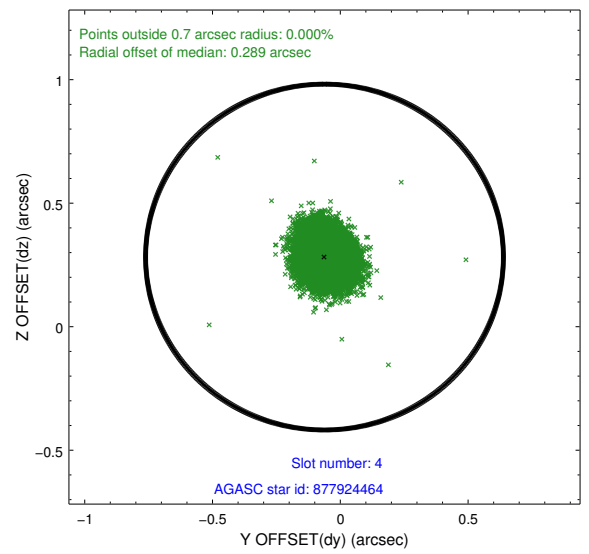
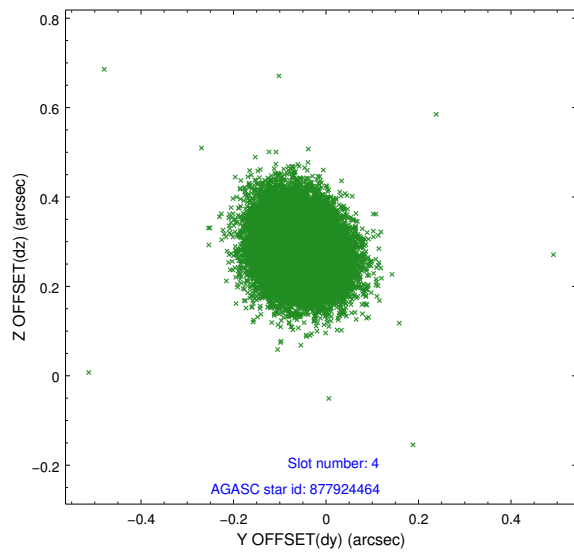
slot	status	id	mag	n_pts	med_dy	med_dz	dr1	dr2	ra	dec	mean_y	mean_z
0	FID	ACIS-S-1	7.19	9060	0.006	0.020	0.017	0.088	0.000000	0.000000	932.86	-1730.40
1	FID	ACIS-S-2	7.10	9061	-0.104	-0.065	0.014	0.044	0.000000	0.000000	-763.14	-1734.99
2	FID	ACIS-S-4	7.20	9061	0.072	0.052	0.012	0.044	0.000000	0.000000	2150.22	173.74
3	GUIDE	877923704	8.26	18115	-0.099	-0.206	0.053	0.085	195.777573	-24.149712	272.33	590.92
4	GUIDE	877924464	9.24	18105	-0.062	0.282	0.082	0.133	196.557235	-24.291020	186.00	-2016.73
5	GUIDE	878444816	7.15	18116	0.059	-0.019	0.051	0.083	195.982981	-24.517217	-921.55	-290.67
6	GUIDE	878445112	9.40	18104	0.171	0.008	0.084	0.138	195.967344	-24.500475	-870.45	-230.51
7	GUIDE	877927208	9.70	18067	-0.074	-0.065	0.122	0.197	195.391934	-23.484537	2422.25	2242.25

2.4 Star Slots

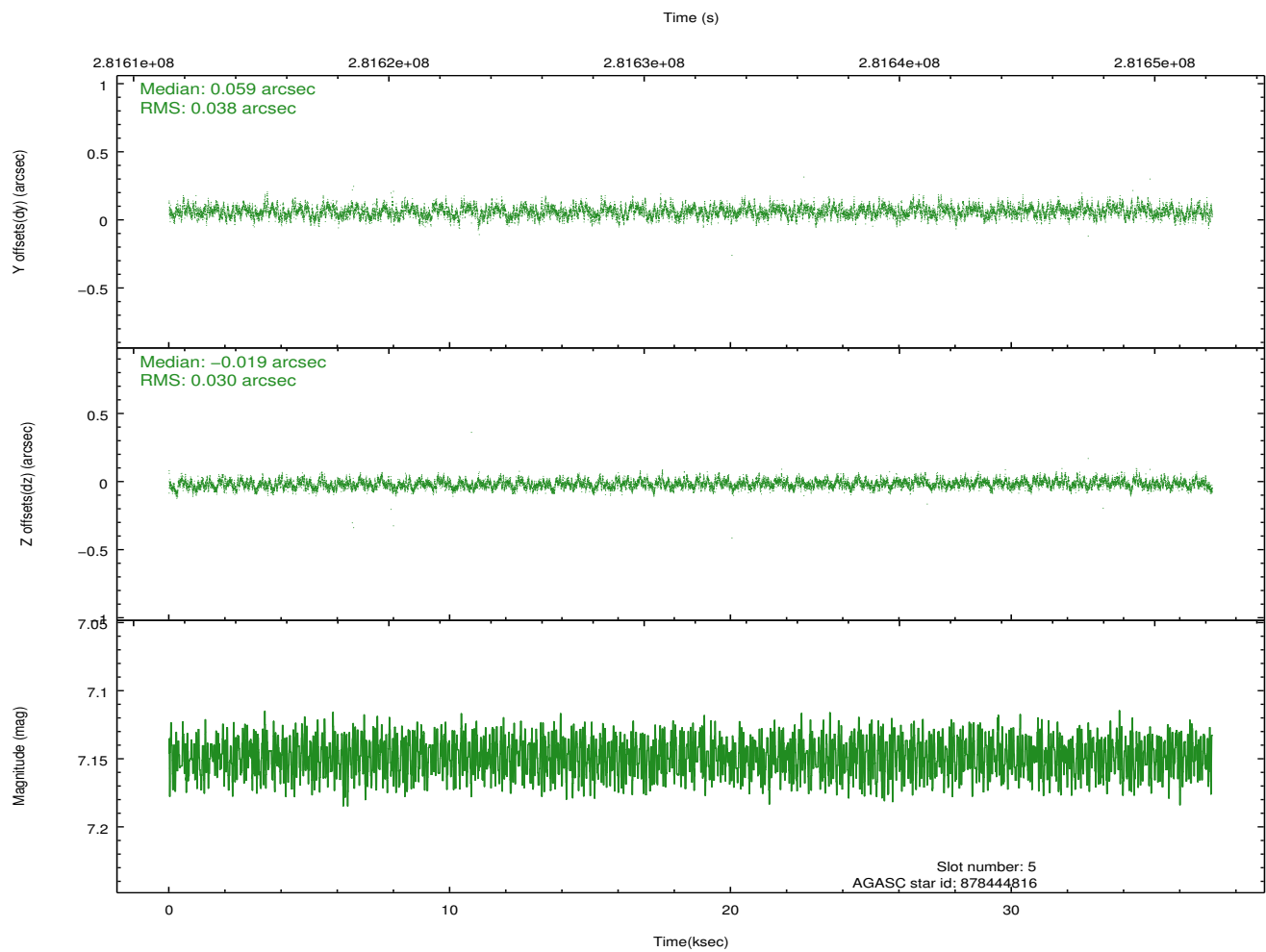
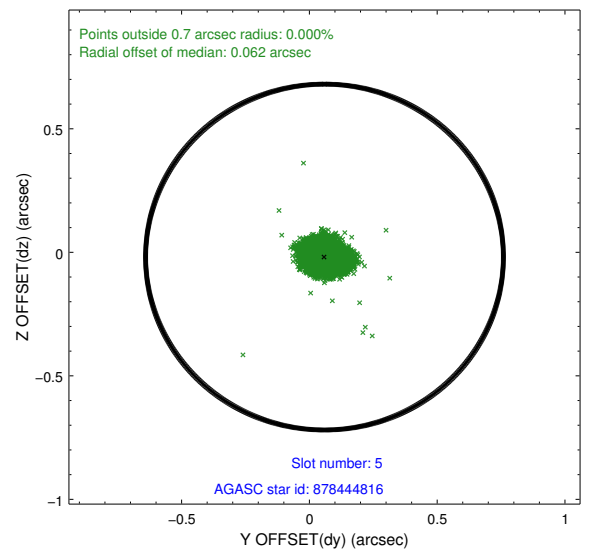
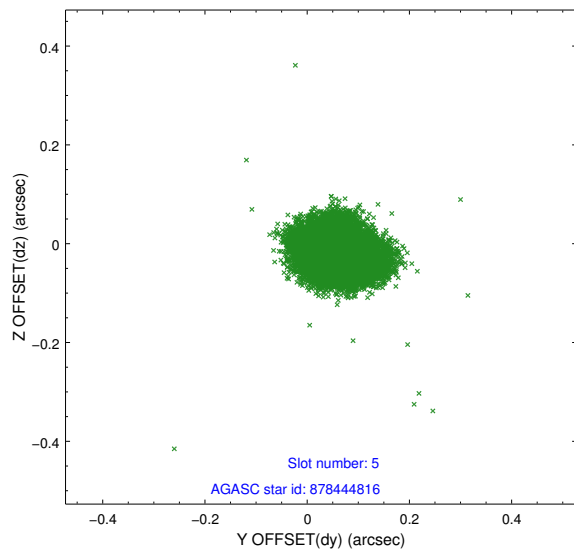
2.4.1 Slot 3



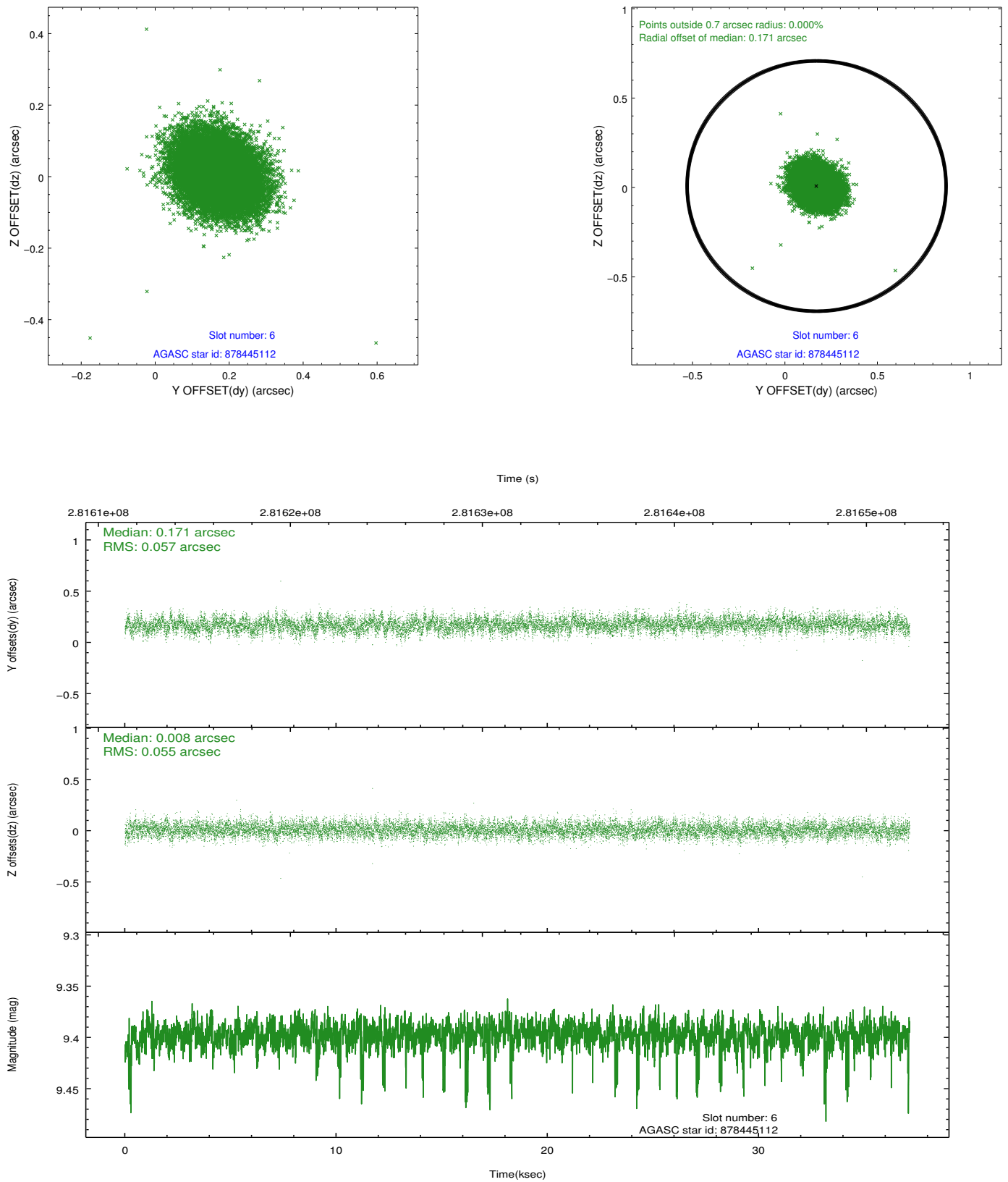
2.4.2 Slot 4



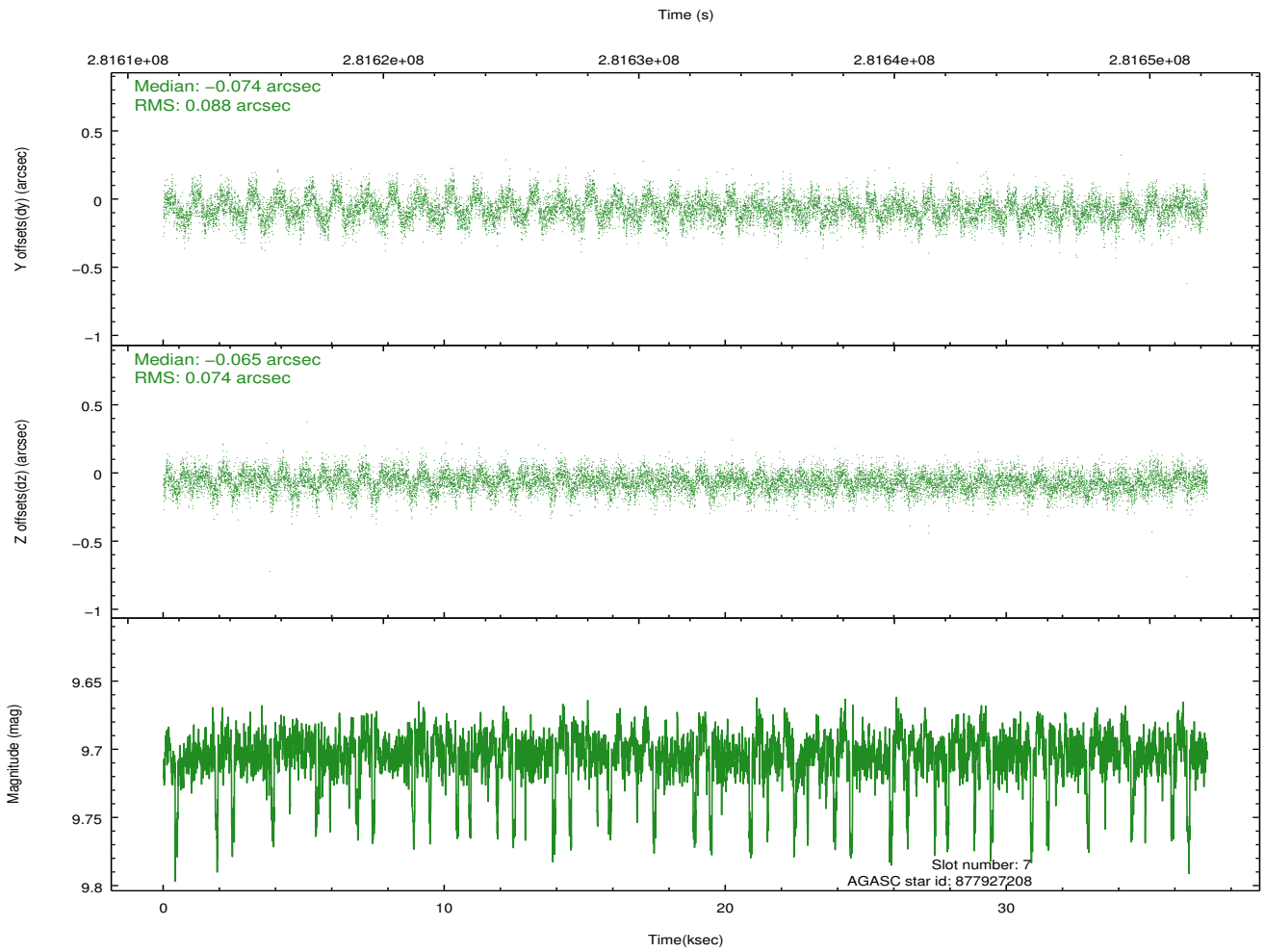
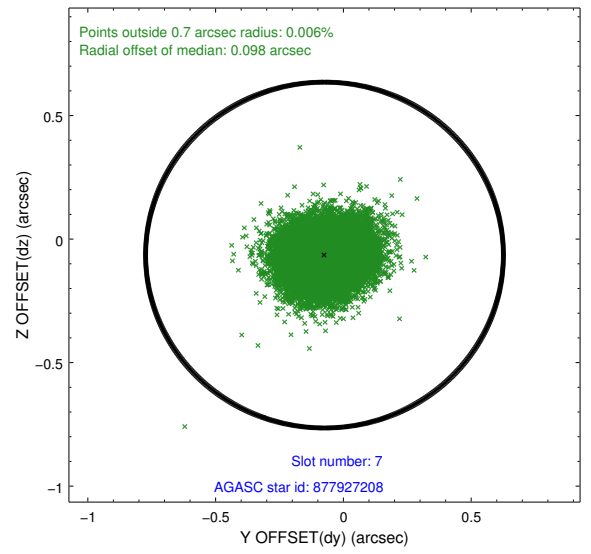
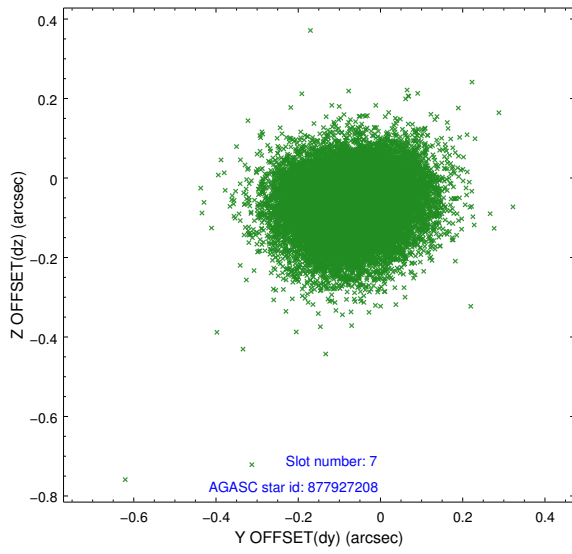
2.4.3 Slot 5



2.4.4 Slot 6

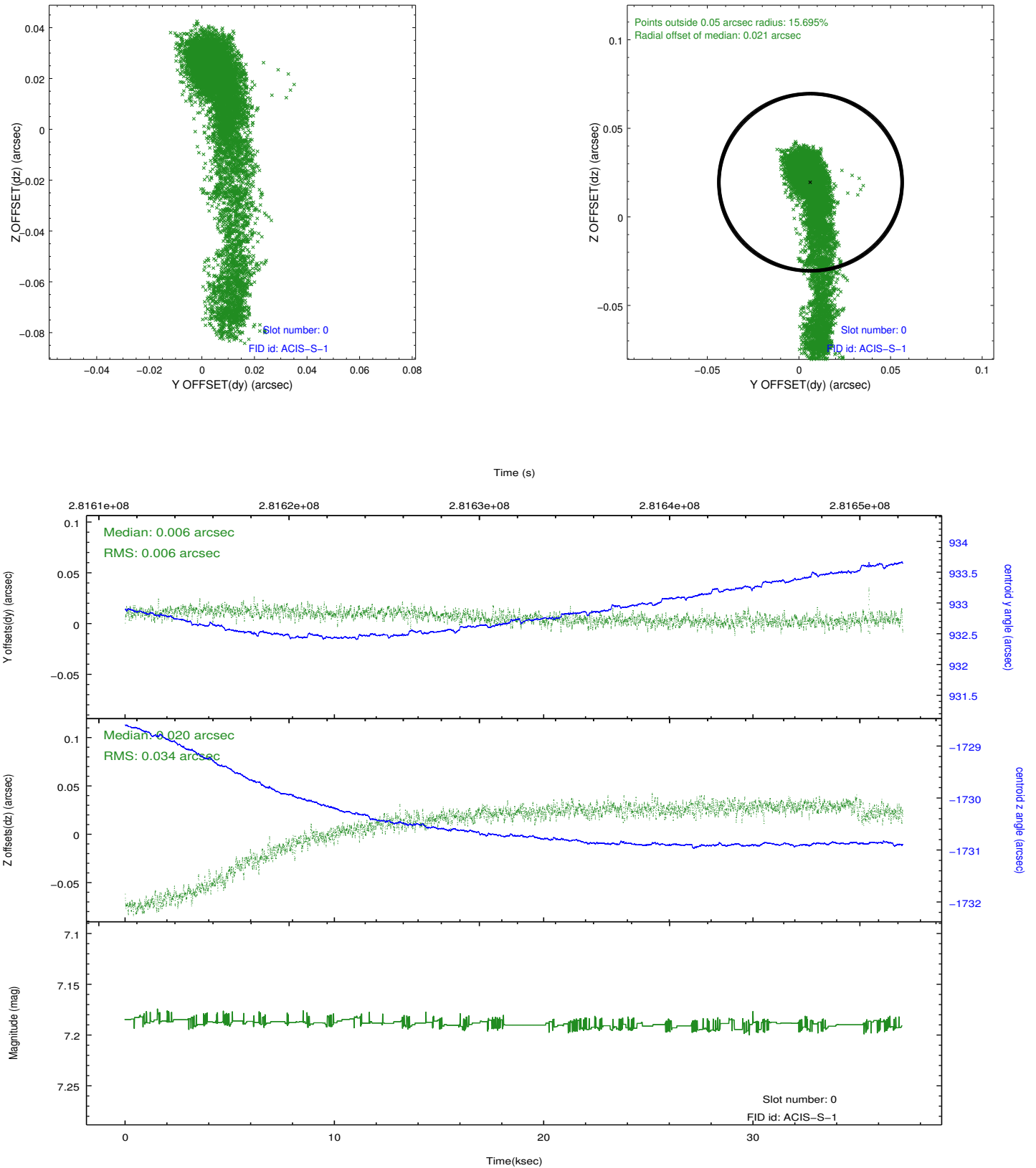


2.4.5 Slot 7

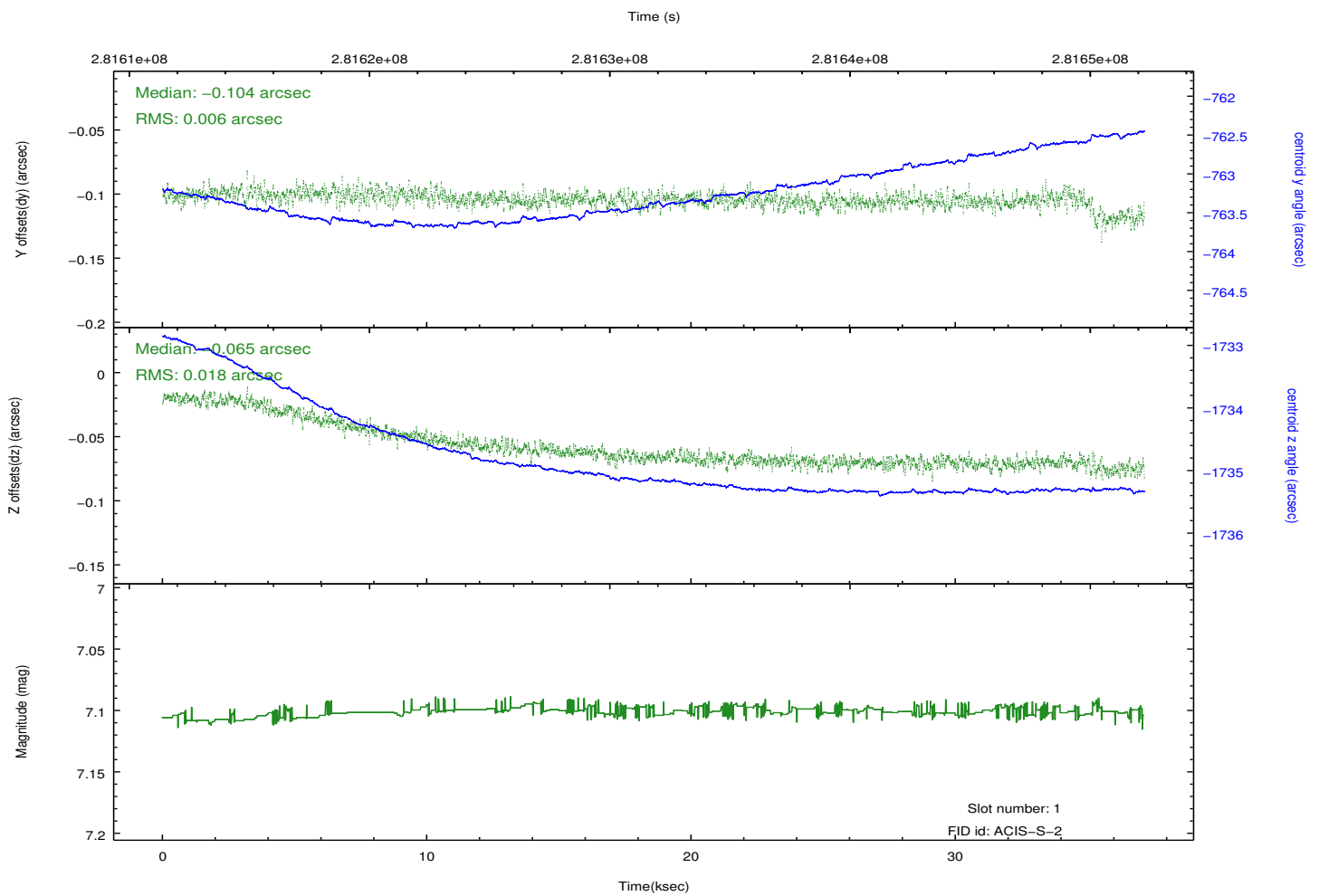
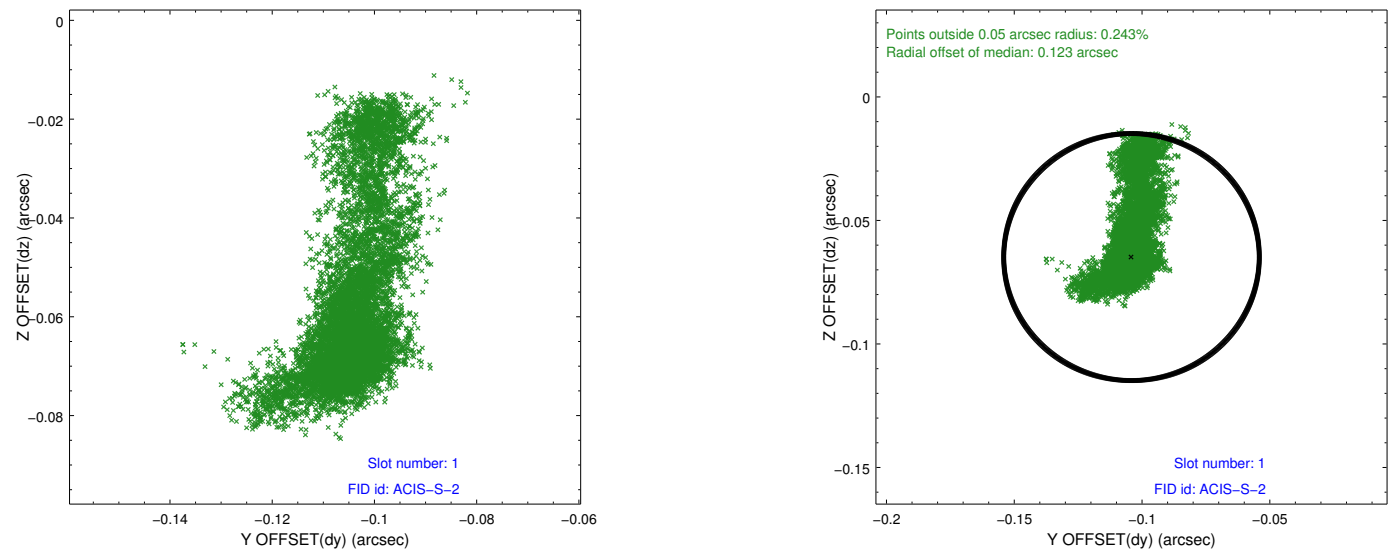


2.5 FID Slots

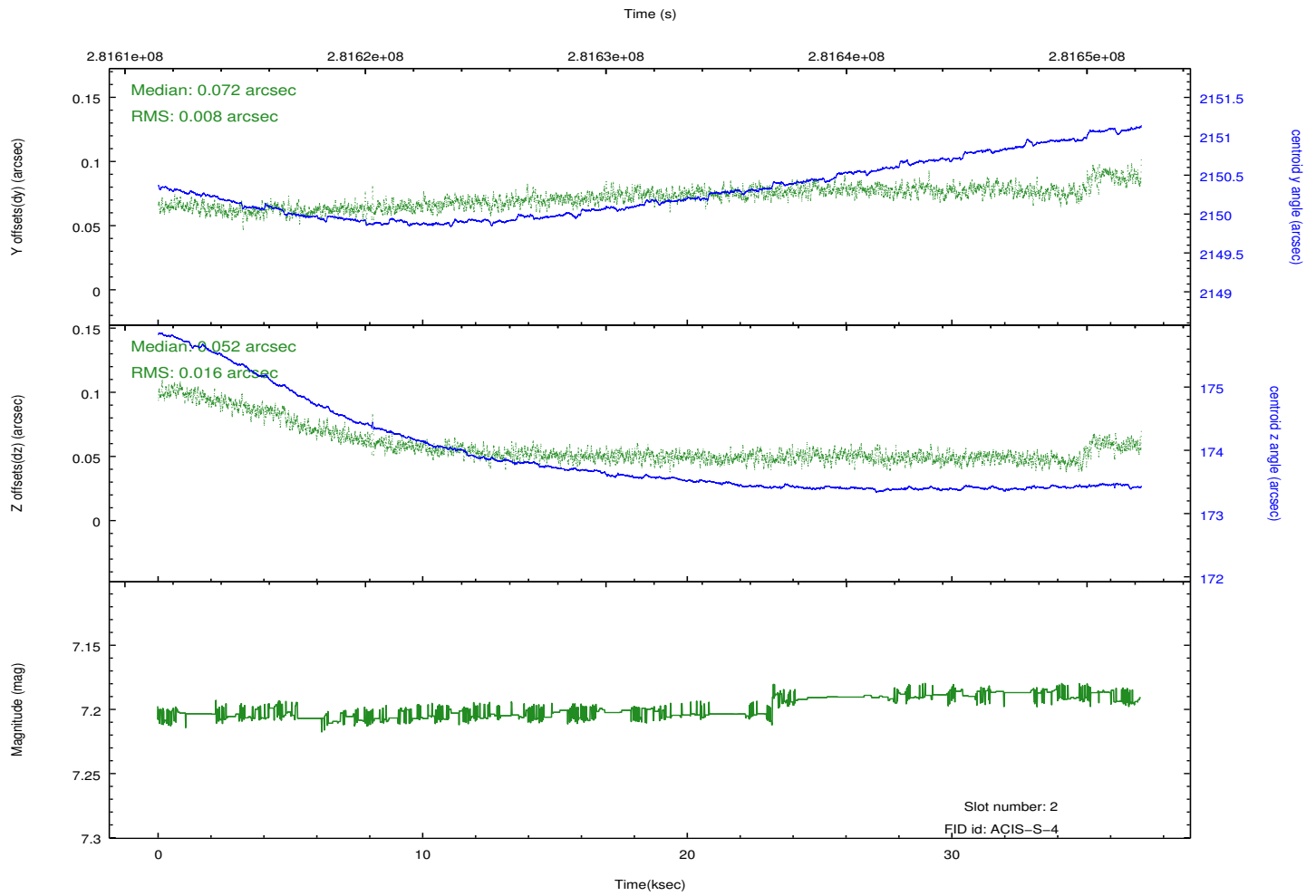
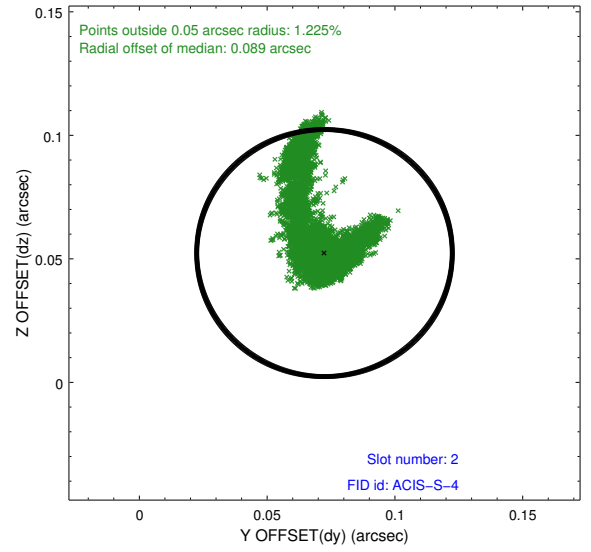
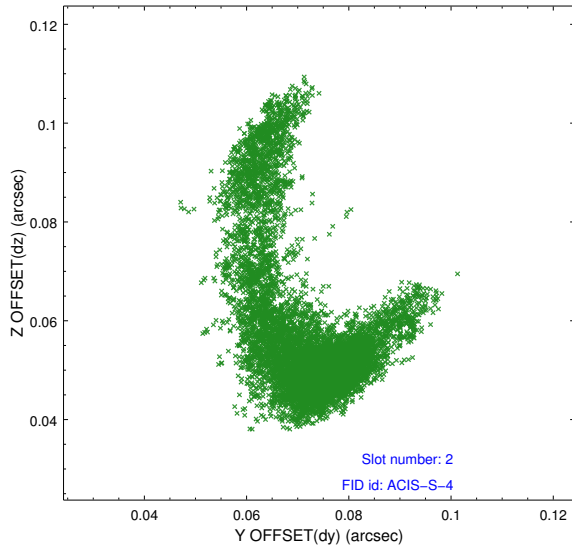
2.5.1 Slot 0



2.5.2 Slot 1



2.5.3 Slot 2



A Summary

A.1 Status

V&V Scientist	Jen Lauer
V&V Date (YYYY-MM-DD)	2012.04.18
V&V Edition	1
V&V Disposition and Status	OK
V&V Charge Time	37.0419002

A.2 Comments