

V&V Reference Report

L2 ASCDS Version : 8.4.4

Observation 7931 - L2 Version 2
Chandra X-Ray Center

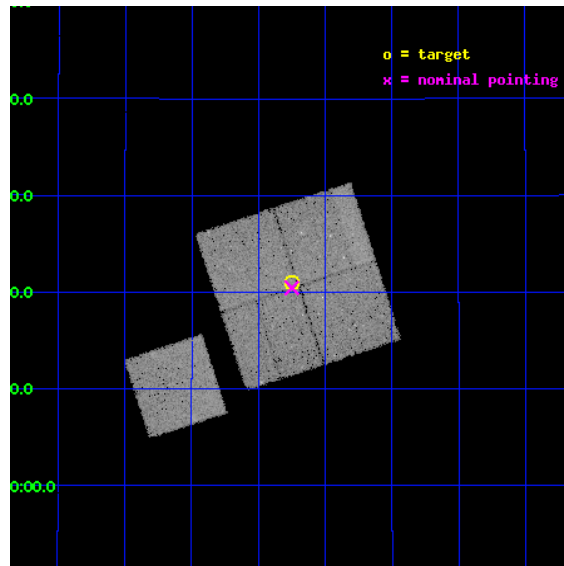
L2 Processing Date : May 9 2012

Contents

1	Front	2
2	OBI	3
2.1	OBI	3
2.1.1	Images	3
2.1.2	Bias	3
2.1.3	Parameters	4
2.1.4	Events	4
2.2	Compared Parameters	5
2.3	Aspect	6
2.4	Star Slots	9
2.4.1	Slot 3	9
2.4.2	Slot 4	10
2.4.3	Slot 5	11
2.4.4	Slot 6	12
2.4.5	Slot 7	13
2.5	FID Slots	14
2.5.1	Slot 0	14
2.5.2	Slot 1	15
2.5.3	Slot 2	16
A	Summary	17
A.1	Status	17
A.2	Comments	17

1 Front

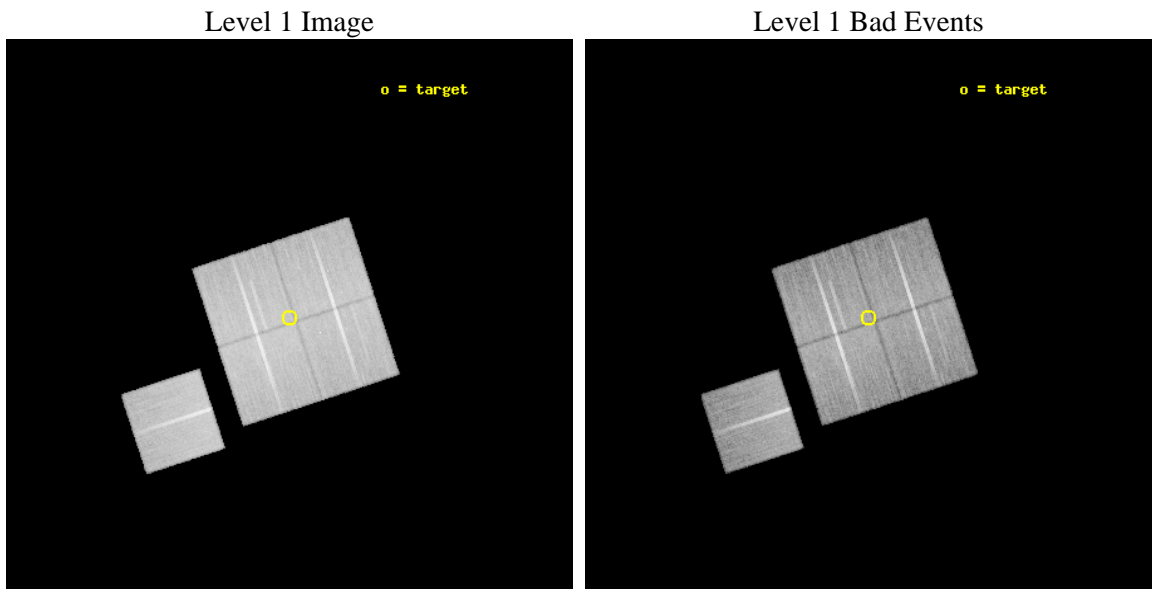
seq_num	800649	Sequence number
obs_id	7931	Observation id
title	A Complete Baryon Census in a Nearby Galaxy Group	Proposal title
observer	Dr. John Mulchaey	Principal investigator
object	NGC2563-P8	Source name
dtcycle	0	
cycle	P	events from which exps? Prim/Second/Both
ra_targ	124.8125	Observer's specified target RA [deg]
dec_targ	21.349111	Observer's specified target Dec [deg]
ra_nom	124.8123886804	Nominal RA [deg]
dec_nom	21.341016260003	Nominal Dec [deg]
roll_nom	251.91274034684	Nominal Roll [deg]
revision	2	Processing version of data
ontime	30125.718271077	Sum of GTIs [s]
liveltime	29732.103583634	Livetime [s]
ontime0	30125.718241274	Sum of GTIs [s]
ontime1	30122.577201247	Sum of GTIs [s]
ontime2	30132.000231743	Sum of GTIs [s]
ontime3	30125.718271077	Sum of GTIs [s]
ontime6	30125.718261063	Sum of GTIs [s]
l2events	102546	Number of level 2 events



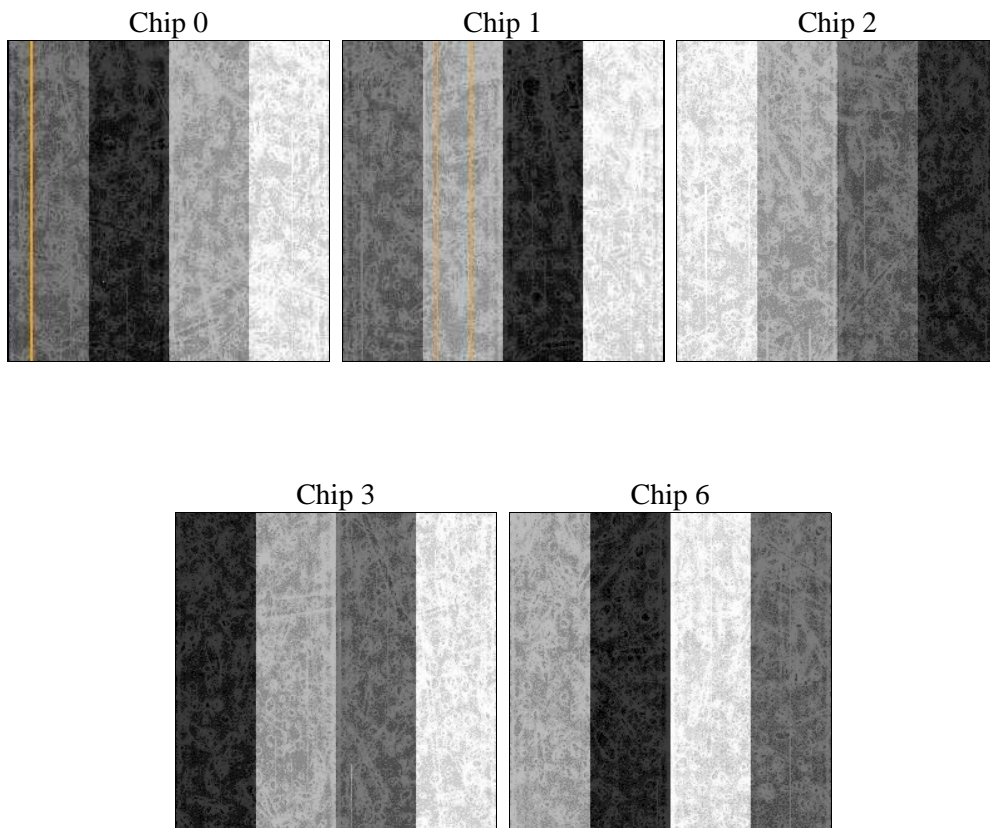
2 OBI

2.1 OBI

2.1.1 Images



2.1.2 Bias



2.1.3 Parameters

obi_num	0	Obi number	sched_exp_time	30000.000000	[s] Scheduled observation exposure time
ascdsver	8.4.4	Processing system revision	ontime	30125.718271077	Sum of GTIs [s]
caldbver	4.4.9	 	ontime0	30125.718241274	Sum of GTIs [s]
date	2012-05-09T05:48:05	Date and time of file creation	ontime1	30122.577201247	Sum of GTIs [s]
revision	2	Processing version of data	ontime2	30132.000231743	Sum of GTIs [s]
			ontime3	30125.718271077	Sum of GTIs [s]
			ontime6	30125.718261063	Sum of GTIs [s]
			l1events	1199144	Number of level 1 events

2.1.4 Events

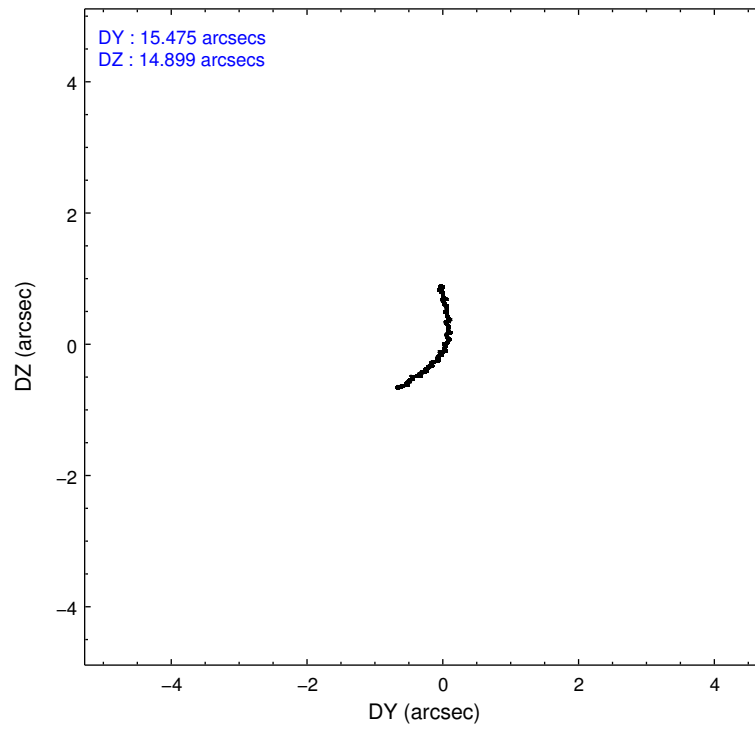
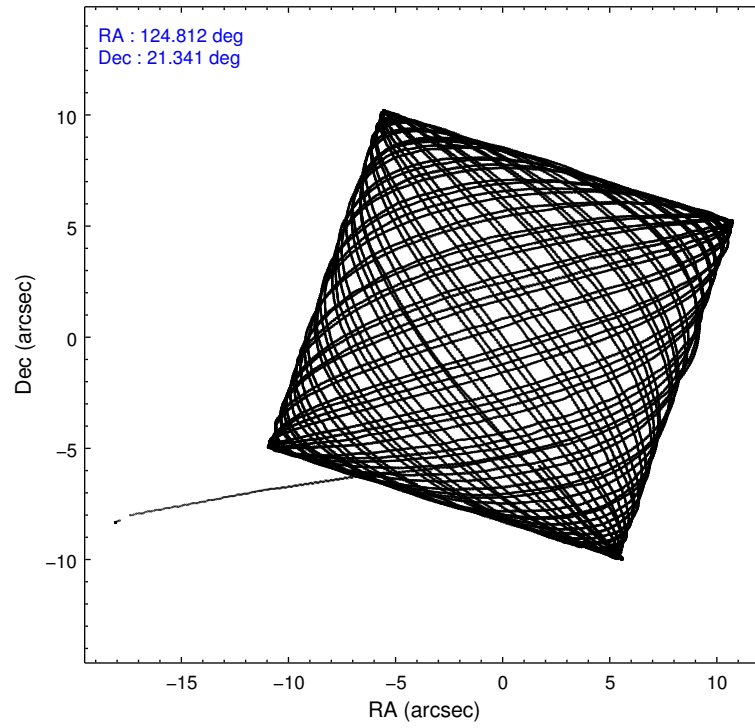
	ccd 0	ccd 1	ccd 2	ccd 3	ccd 6
level 1 events	230407	229434	251685	242992	244626
rejected events	206073	202243	228076	220259	219038
rejected %	89%	88%	90%	90%	89%

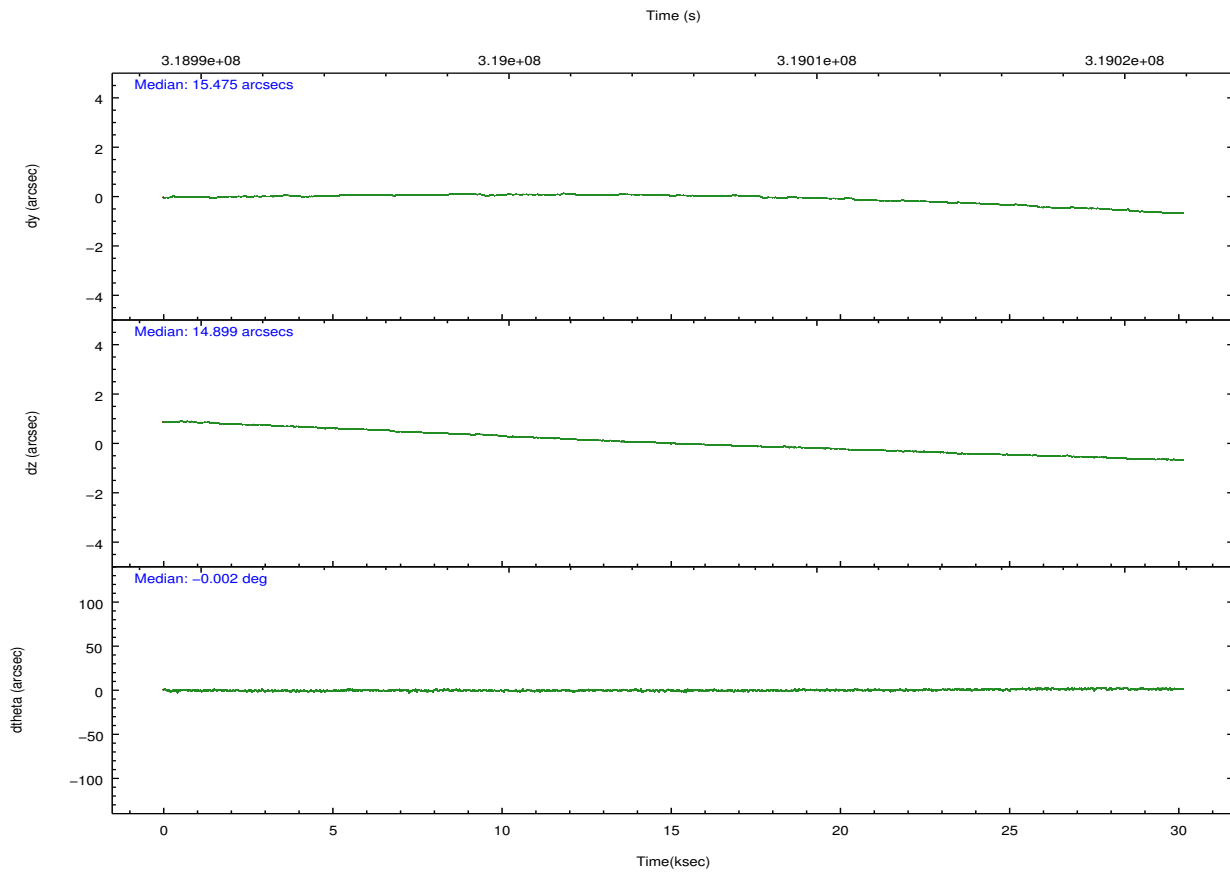
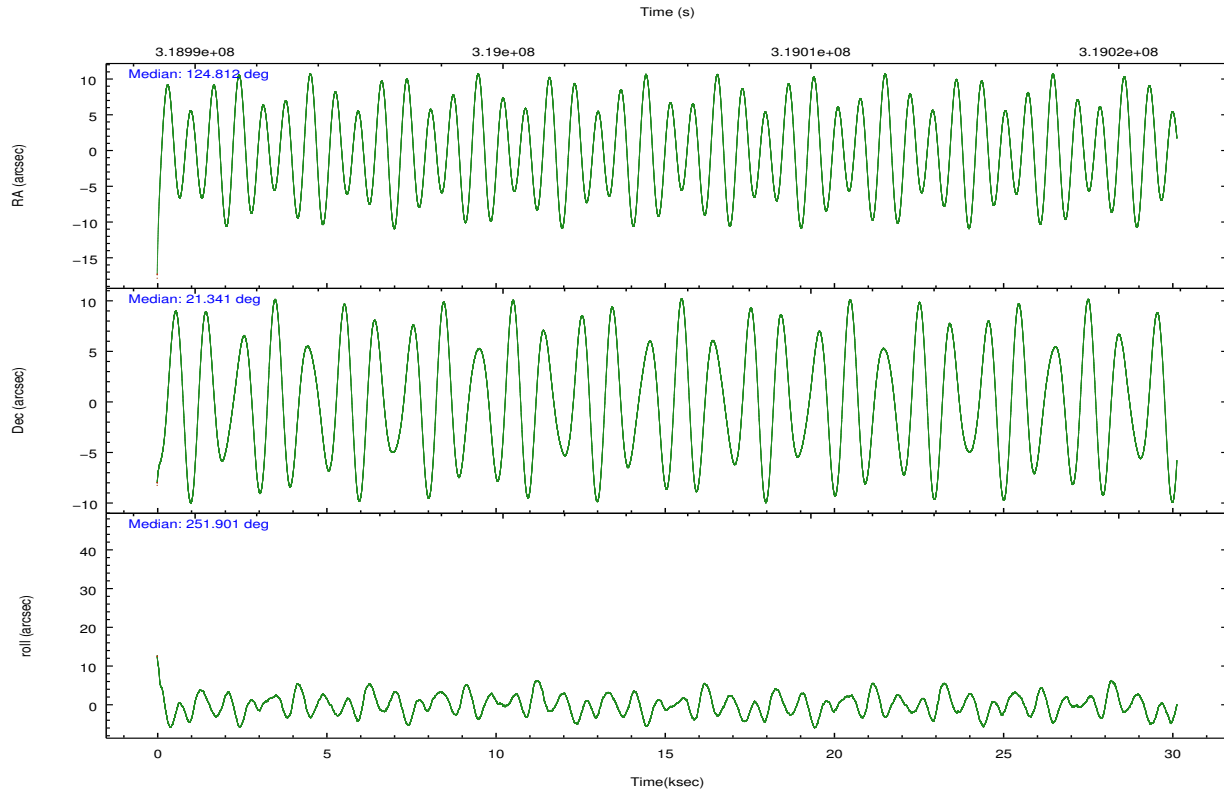
	ccd 0	ccd 1	ccd 2	ccd 3	ccd 6
grade 0 events	8620	10126	8638	8183	9553
	3%	4%	3%	3%	3%
grade 1 events	129	113	128	140	93
	0%	0%	0%	0%	0%
grade 2 events	6045	6256	5784	5156	5655
	2%	2%	2%	2%	2%
grade 3 events	2750	2898	2513	2557	2796
	1%	1%	0%	1%	1%
grade 4 events	2634	2974	2709	2517	2726
	1%	1%	1%	1%	1%
grade 5 events	8672	9505	8252	10077	9560
	3%	4%	3%	4%	3%
grade 6 events	4836	5546	4426	4801	5421
	2%	2%	1%	1%	2%
grade 7 events	196721	192016	219235	209561	208822
	85%	83%	87%	86%	85%

2.2 Compared Parameters

Parameter	Planned	Actual	Parameter	Planned	Actual
Instrument	ACIS	ACIS	Obspar format version number	7	7
Detector	ACIS-01236	ACIS-01236	Obspar file type	PREDICTED	ACTUAL
Grating	NONE	NONE	Obspar update status	NONE	UPDATED
Data mode	VFAINT	VFAINT	CCD I0 on	Y	Y
Observation mode	POINTING	POINTING	CCD I1 on	Y	Y
[deg] Pointing RA	124.806169	124.8123886803956	CCD I2 on	Y	Y
[deg] Pointing Dec	21.367914	21.34101626000295	CCD I3 on	Y	Y
[deg] Pointing Roll	251.706316	251.9127403468353	CCD S0 on	N	N
[mm] SIM focus pos	-0.782348	-0.7809083437167272	CCD S1 on	N	N
[mm] SIM defocus	0	0.001439871863259334	CCD S2 on	O1	Y
[mm] SIM translation stage pos	-233.592463	-233.5874344608287	CCD S3 on	N	N
[mm] SIM translation stage offset	0	-0.005018542100998502	CCD S4 on	N	N
[s] Observation start time (MET)	318990394.184000	318989086.95793	CCD S5 on	N	N
Observation start date	2008-02-10T00:25:29	2008-02-10T00:04:46	Number of optional ACIS chips dropped	0	0
[s] Observation end time (MET)	319020394.184000	319021244.79699	On-chip summing requested	N	N
Observation end date	2008-02-10T08:45:29	2008-02-10T09:00:44	Subarray requested	NONE	NONE
Read mode	TIMED	TIMED	Alternating exposures requested	N	N
			[s] Primary exposure time	0.000000	3.1

2.3 Aspect



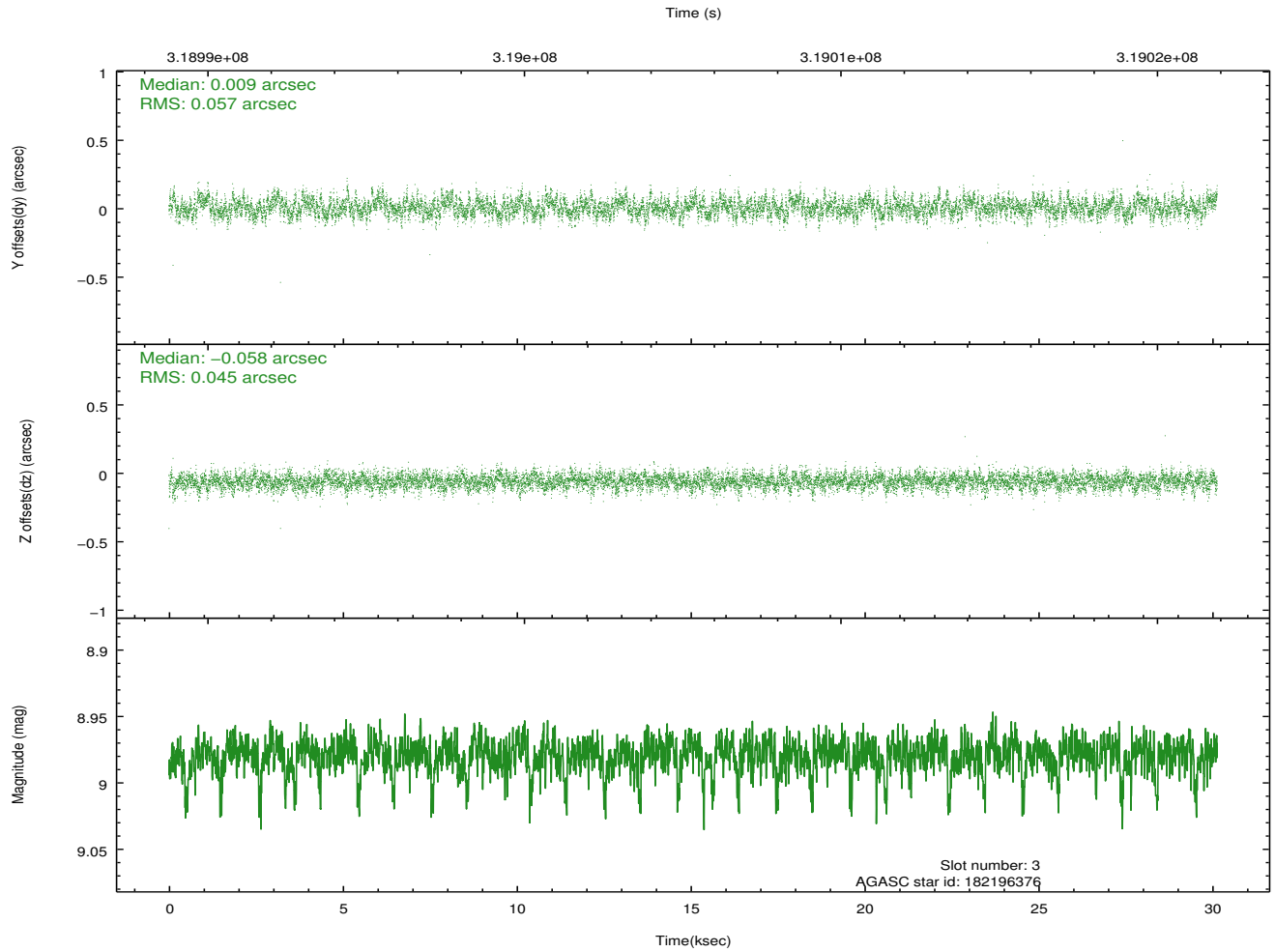
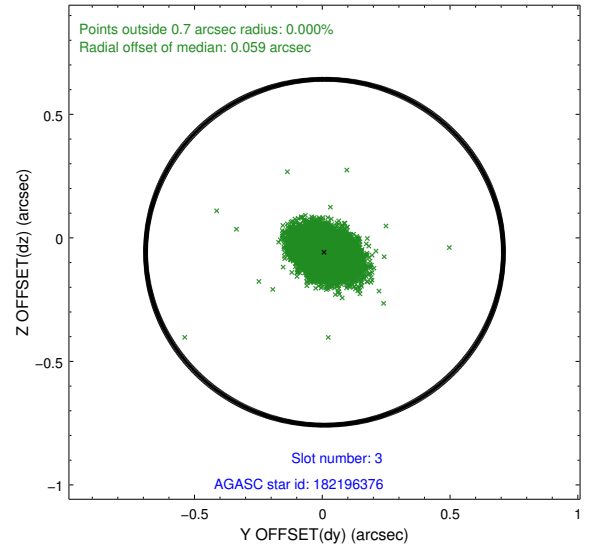
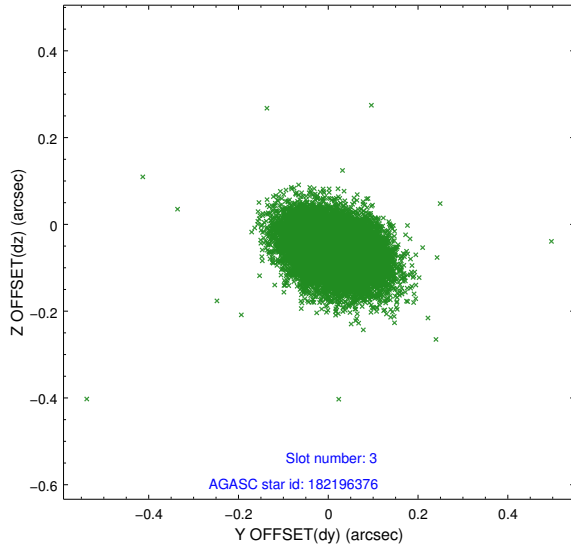


Slot Statistics

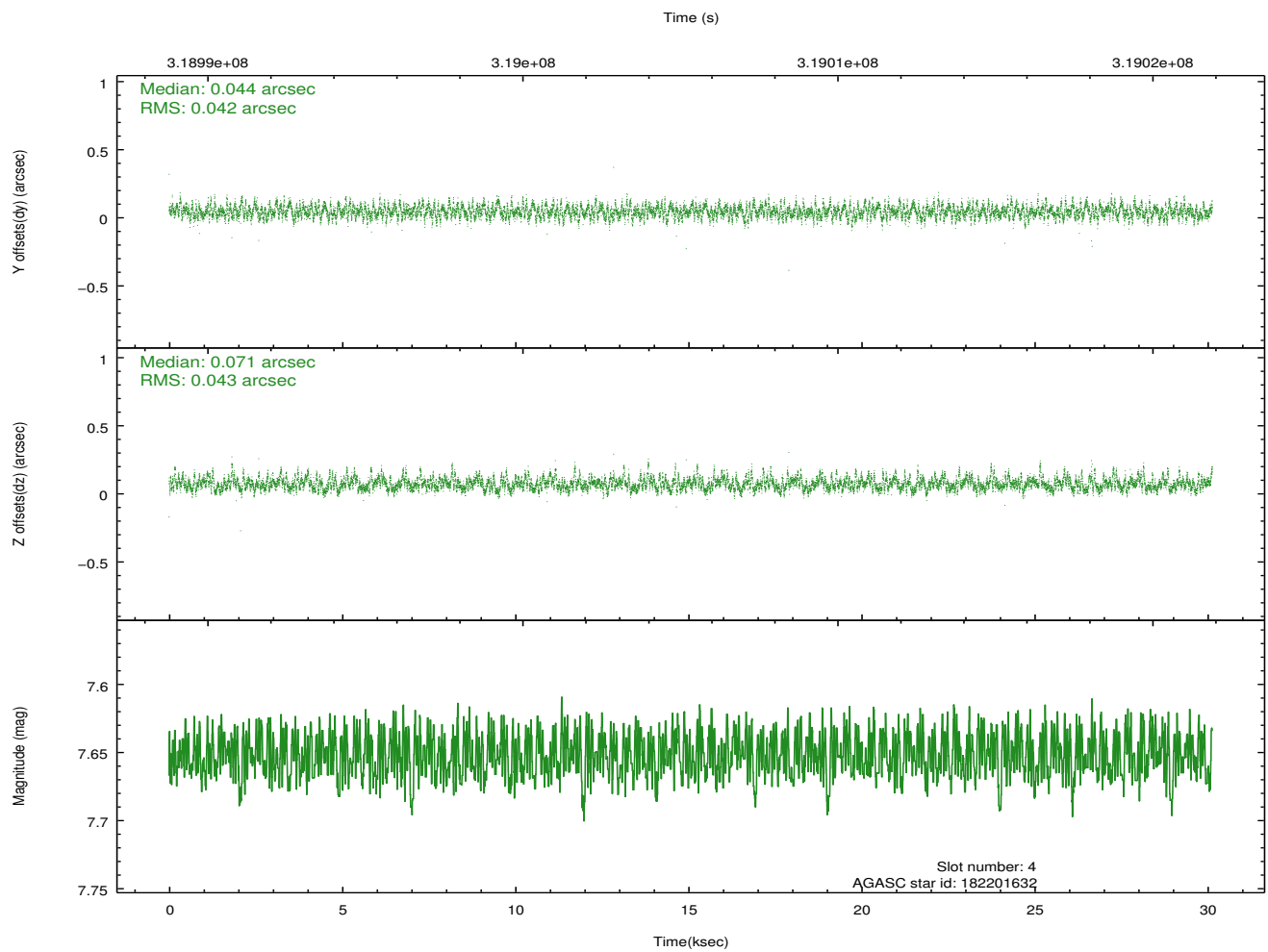
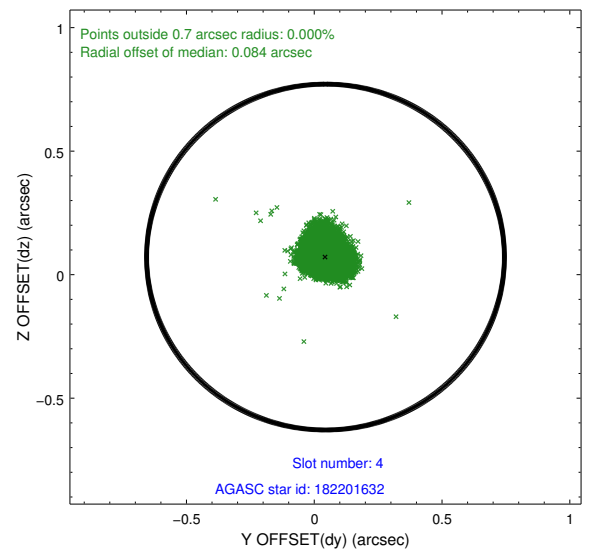
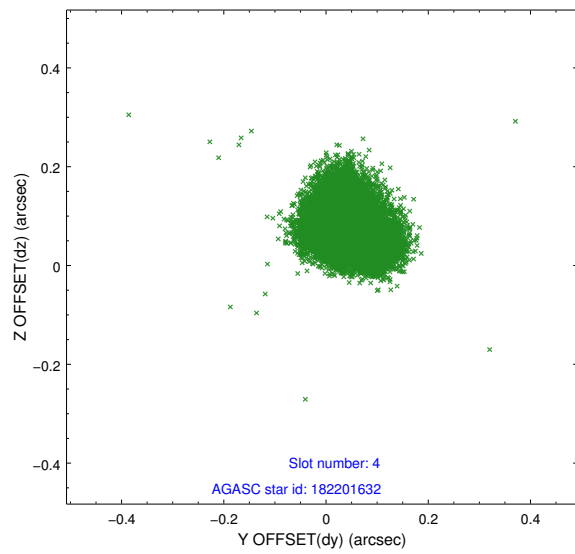
slot	status	id	mag	n_pts	med_dy	med_dz	dr1	dr2	ra	dec	mean_y	mean_z
0	FID	ACIS-I-2	7.13	7351	-0.070	-0.077	0.018	0.035	0.000000	0.000000	-770.17	-844.99
1	FID	ACIS-I-4	7.17	7350	0.165	0.065	0.012	0.020	0.000000	0.000000	2144.09	1061.28
2	FID	ACIS-I-5	7.22	7349	-0.197	0.081	0.018	0.030	0.000000	0.000000	-1824.03	1059.24
3	GUIDE	182196376	8.98	14692	0.009	-0.058	0.076	0.126	125.557315	21.603160	-1599.12	2119.45
4	GUIDE	182201632	7.65	14701	0.044	0.071	0.063	0.102	124.727284	21.494130	-348.21	-392.98
5	GUIDE	182203576	7.56	14701	-0.024	0.049	0.067	0.107	124.189461	21.231017	1114.35	-1810.95
6	GUIDE	182201408	8.54	14700	-0.041	0.047	0.102	0.162	124.236039	21.919804	-1291.27	-2432.28
7	GUIDE	182202928	9.09	14683	0.017	-0.108	0.122	0.188	125.551699	21.434953	-1019.24	2294.44

2.4 Star Slots

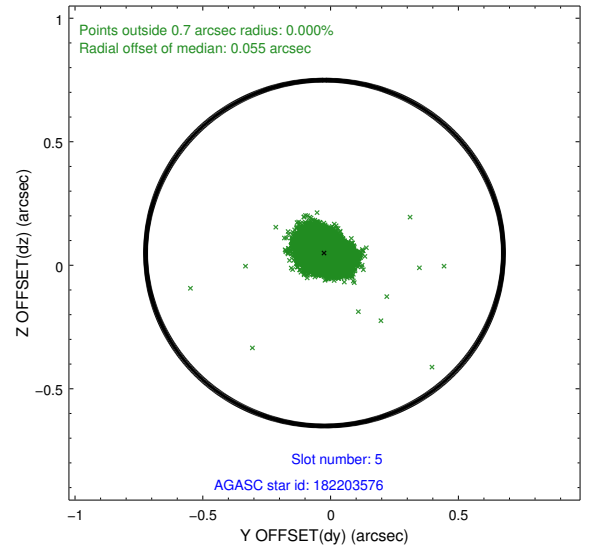
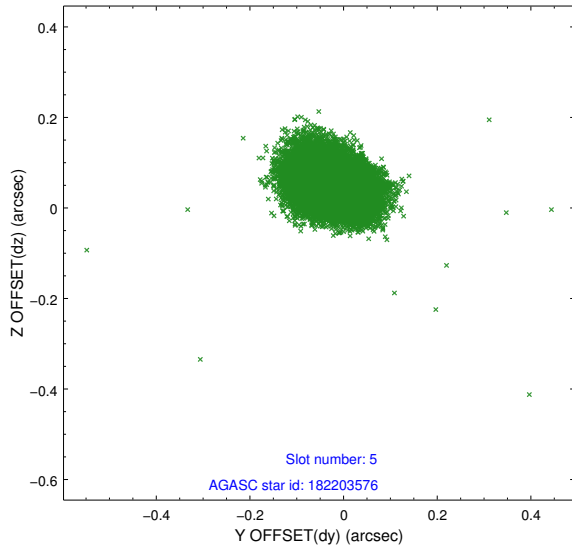
2.4.1 Slot 3



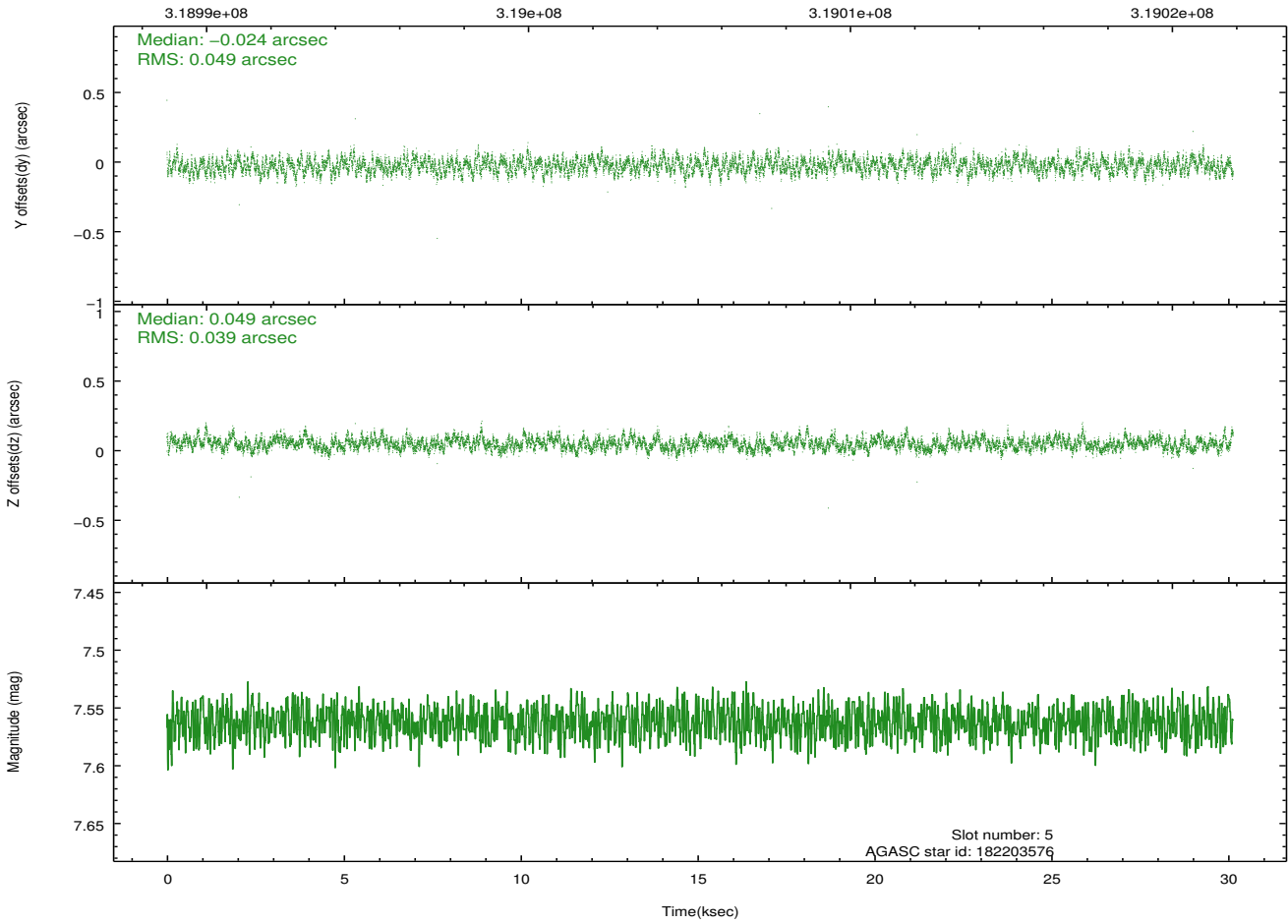
2.4.2 Slot 4



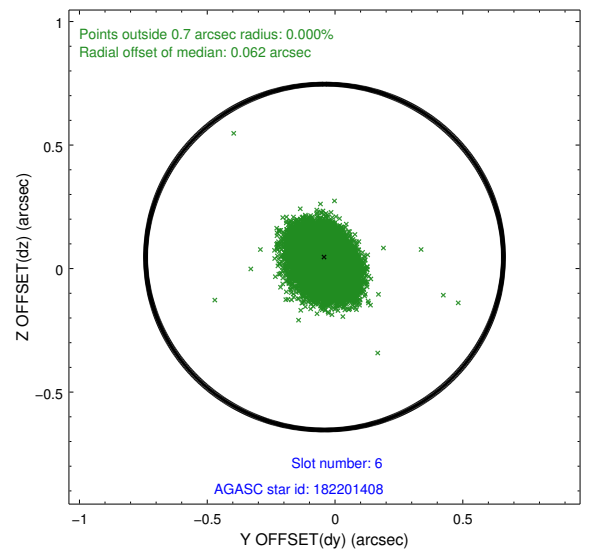
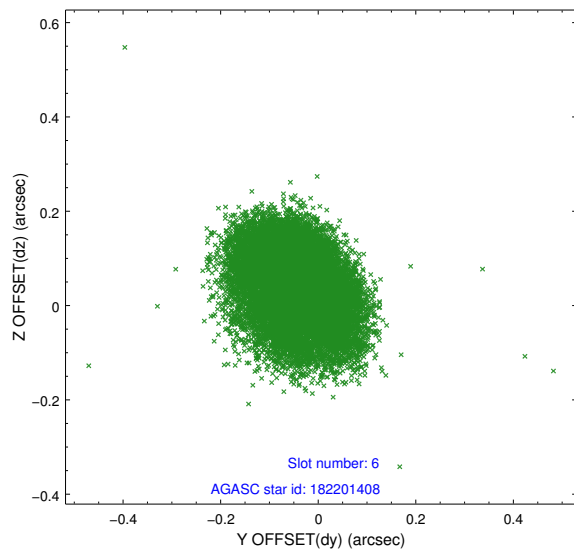
2.4.3 Slot 5



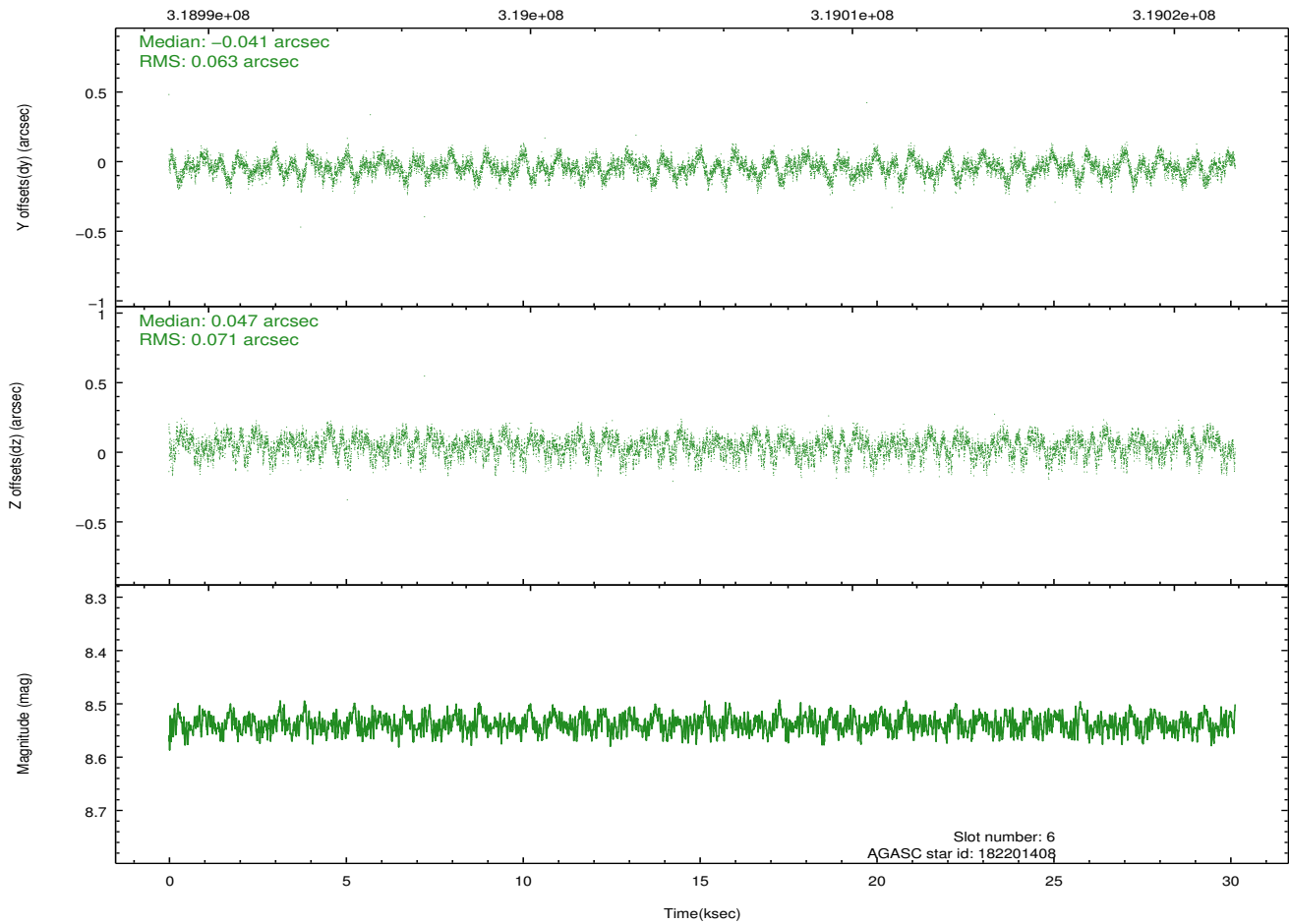
Time (s)



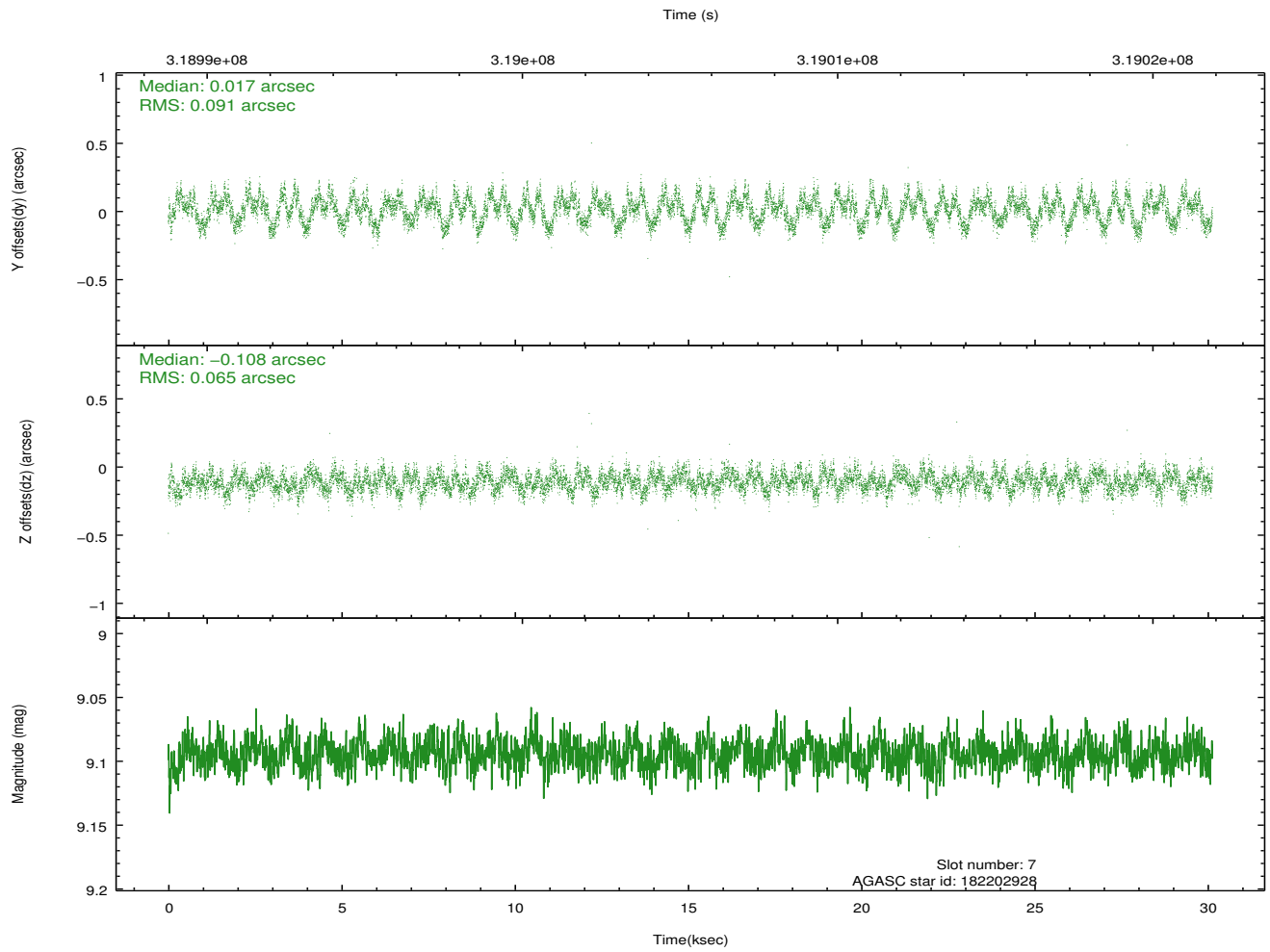
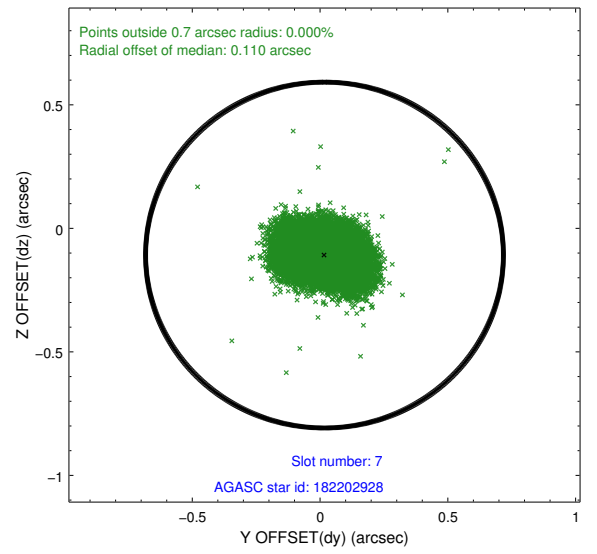
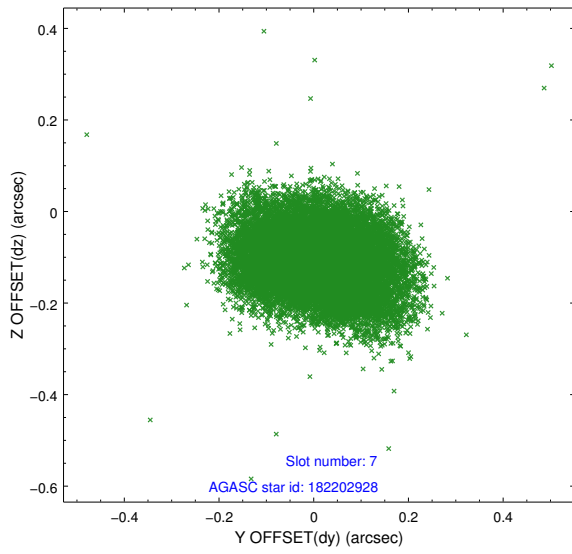
2.4.4 Slot 6



Time (s)

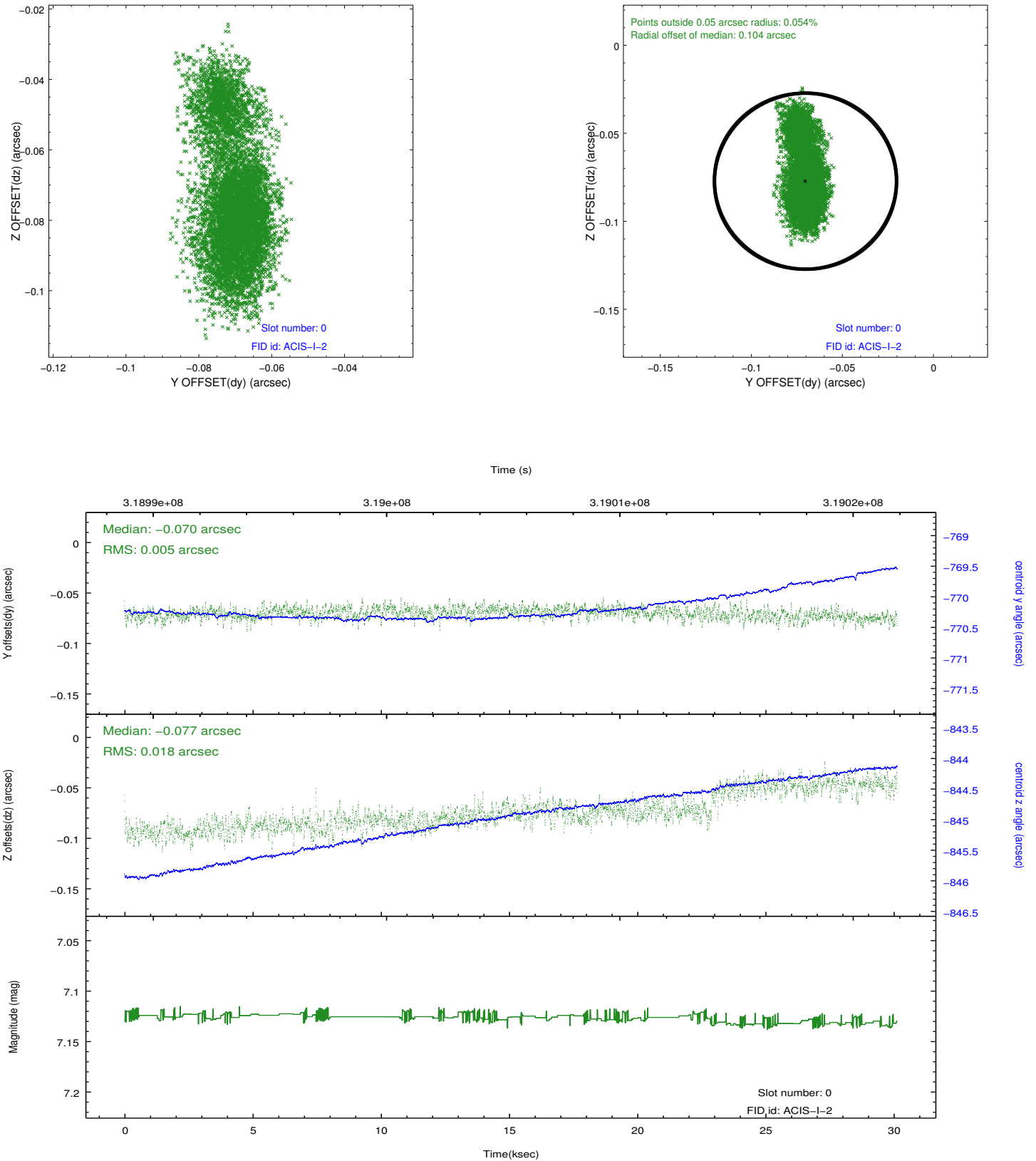


2.4.5 Slot 7

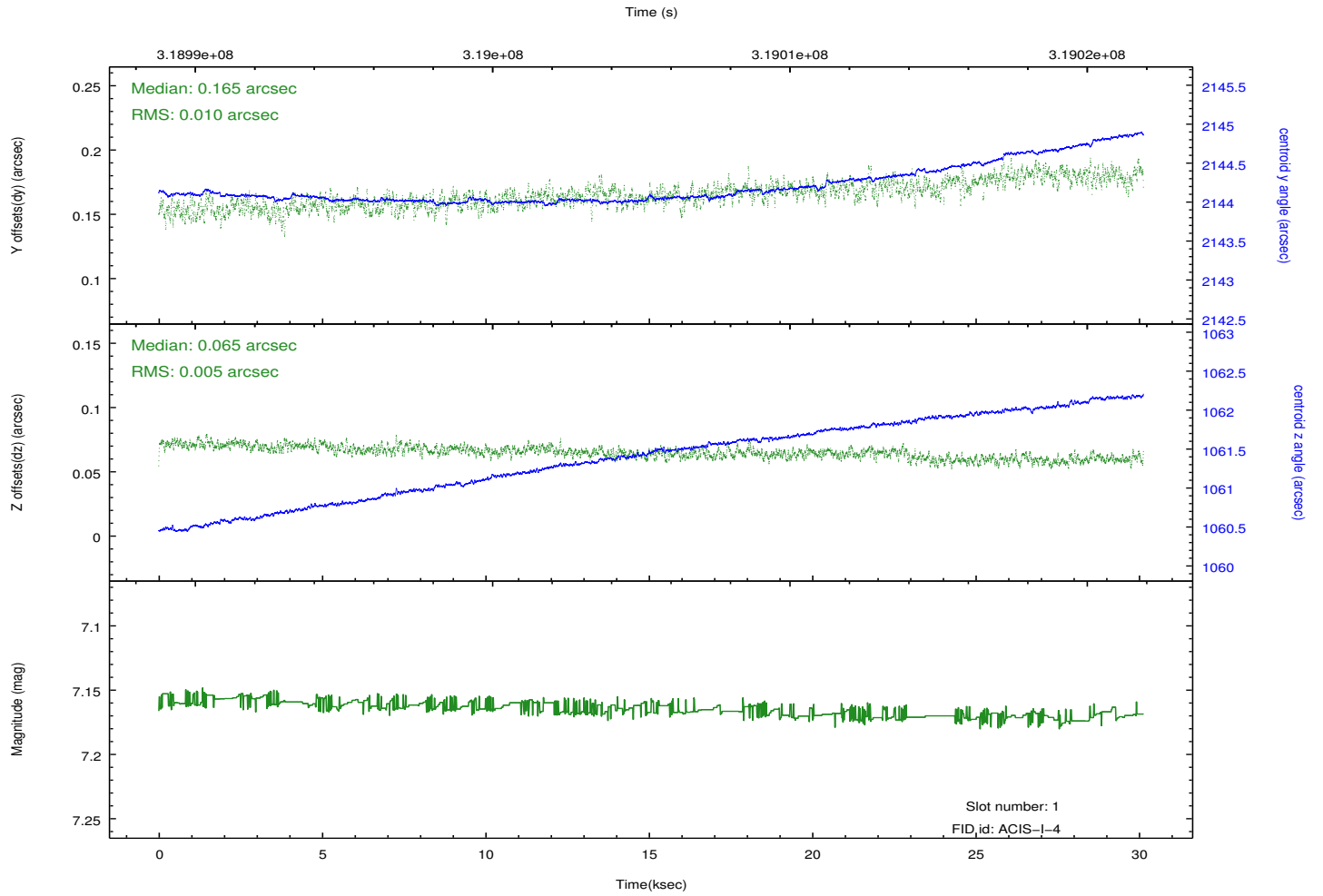
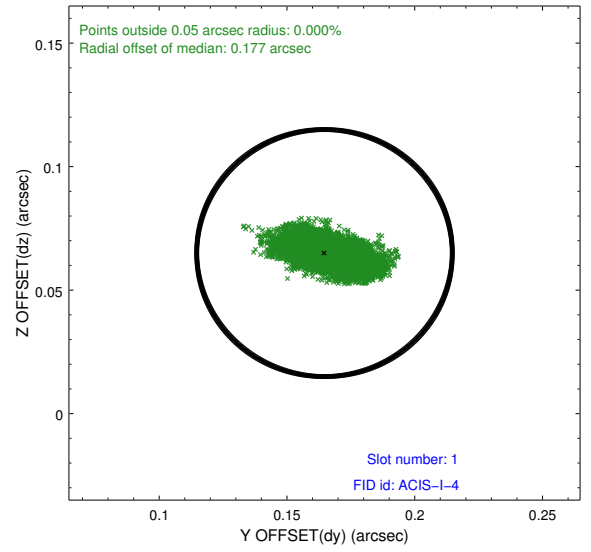
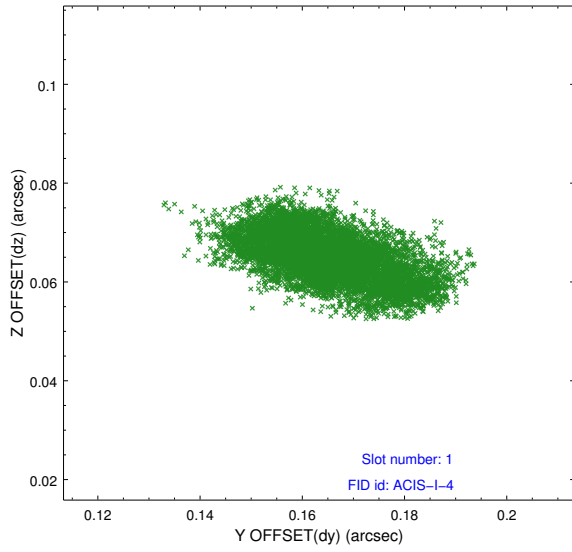


2.5 FID Slots

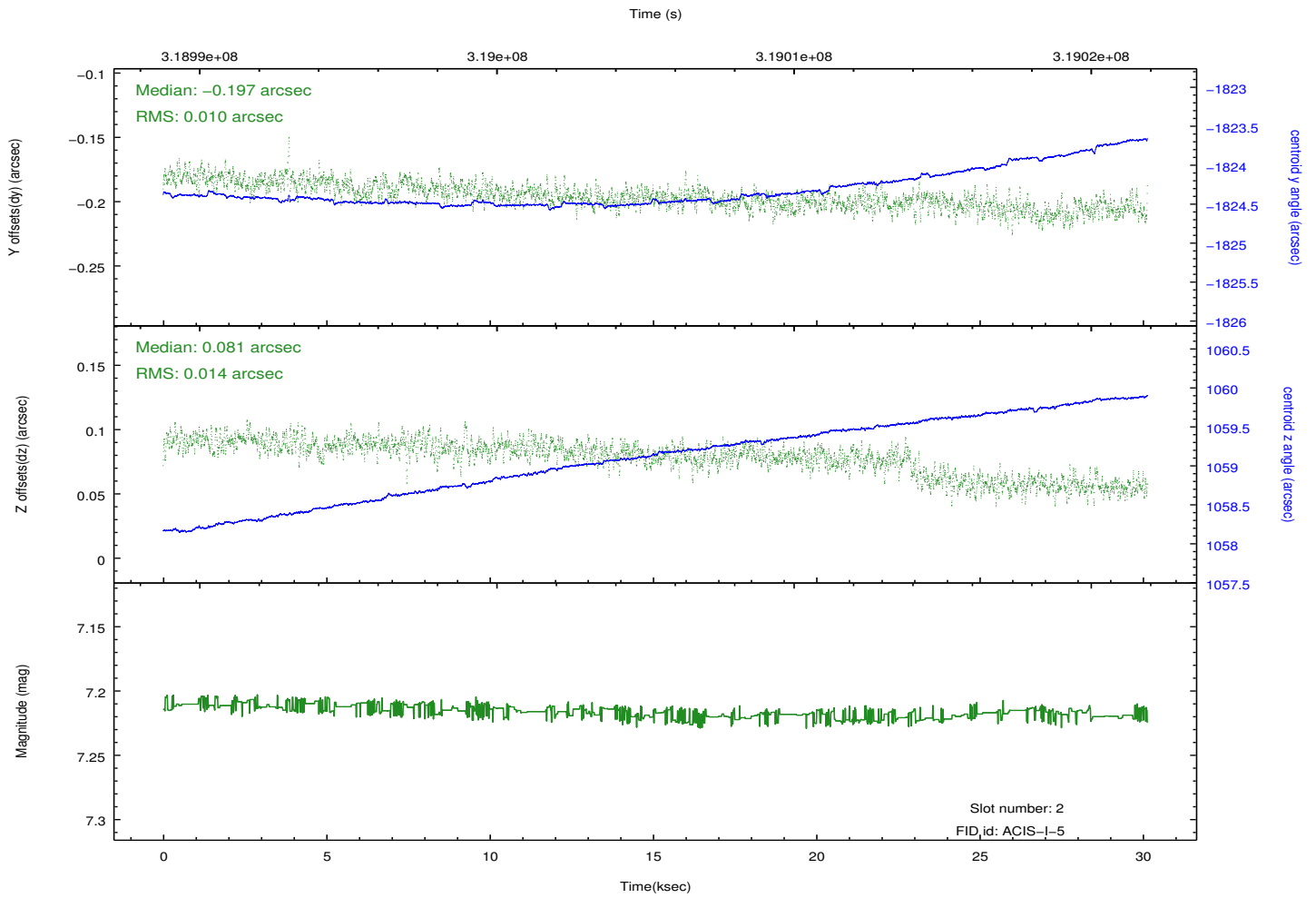
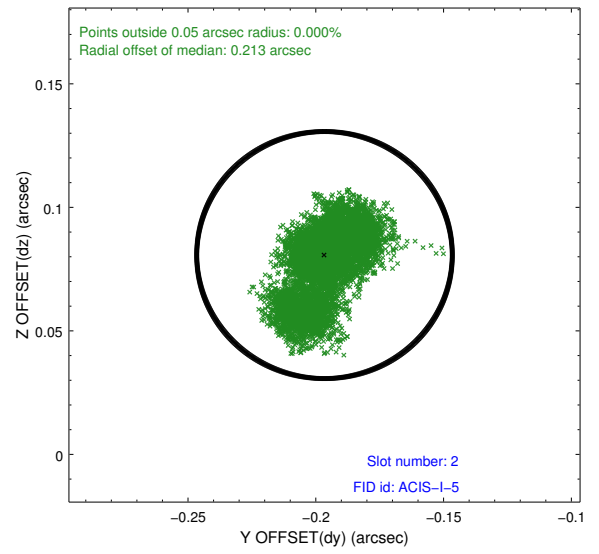
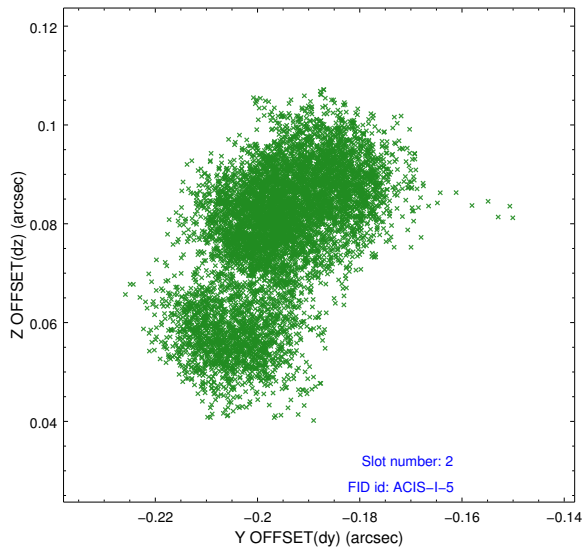
2.5.1 Slot 0



2.5.2 Slot 1



2.5.3 Slot 2



A Summary

A.1 Status

V&V Scientist	Jen Lauer
V&V Date (YYYY-MM-DD)	2012.05.10
V&V Edition	1
V&V Disposition and Status	OK
V&V Charge Time	30.1257182

A.2 Comments