

V&V Reference Report

L2 ASCDS Version : 8.4.4

Observation 7941 - L2 Version 2
Chandra X-Ray Center

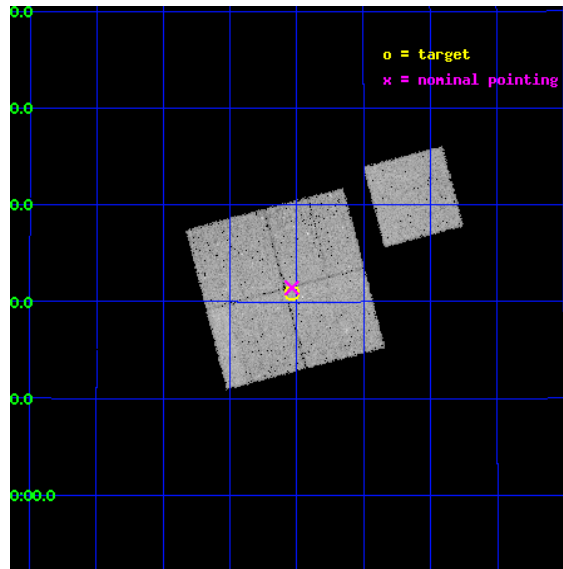
L2 Processing Date : May 1 2012

Contents

1	Front	2
2	OBI	3
2.1	OBI	3
2.1.1	Images	3
2.1.2	Bias	3
2.1.3	Parameters	4
2.1.4	Events	4
2.2	Compared Parameters	5
2.3	Aspect	6
2.4	Star Slots	9
2.4.1	Slot 3	9
2.4.2	Slot 4	10
2.4.3	Slot 5	11
2.4.4	Slot 6	12
2.4.5	Slot 7	13
2.5	FID Slots	14
2.5.1	Slot 0	14
2.5.2	Slot 1	15
2.5.3	Slot 2	16
A	Summary	17
A.1	Status	17
A.2	Comments	17

1 Front

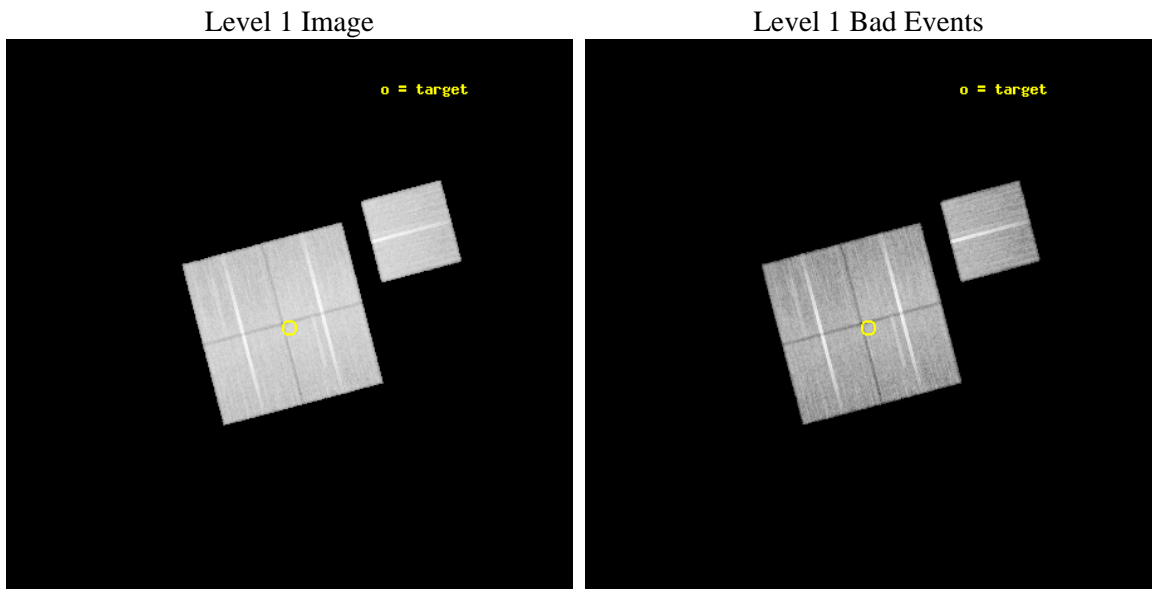
seq_num	800659	Sequence number
obs_id	7941	Observation id
title	A Complete Baryon Census in a Nearby Galaxy Group	Proposal title
observer	Dr. John Mulchaey	Principal investigator
object	NGC2563-P4	Source name
dtcycle	0	
cycle	P	events from which exps? Prim/Second/Both
ra_targ	125.384583	Observer's specified target RA [deg]
dec_targ	21.349278	Observer's specified target Dec [deg]
ra_nom	125.3841909574	Nominal RA [deg]
dec_nom	21.357364862505	Nominal Dec [deg]
roll_nom	75.29151990405	Nominal Roll [deg]
revision	2	Processing version of data
ontime	30172.218261659	Sum of GTIs [s]
livetime	29777.996017607	Livetime [s]
ontime0	30169.077311277	Sum of GTIs [s]
ontime1	30178.5002321	Sum of GTIs [s]
ontime2	30169.077321231	Sum of GTIs [s]
ontime3	30172.218261659	Sum of GTIs [s]
ontime6	30178.5002321	Sum of GTIs [s]
l2events	103155	Number of level 2 events



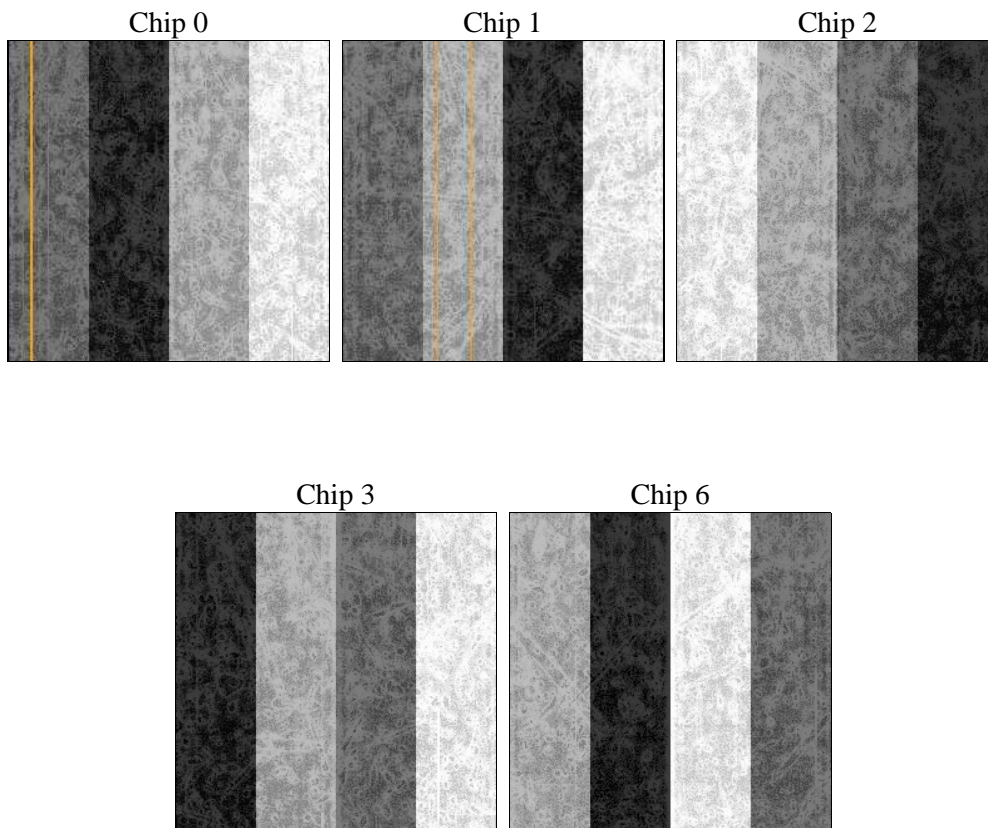
2 OBI

2.1 OBI

2.1.1 Images



2.1.2 Bias



2.1.3 Parameters

obi_num	0	Obi number	sched_exp_time	30000.000000	[s] Scheduled observation exposure time
ascdsver	8.4.4	Processing system revision	ontime	30172.218261659	Sum of GTIs [s]
caldsver	4.4.9	 	ontime0	30169.077311277	Sum of GTIs [s]
date	2012-05-01T06:32:37	Date and time of file creation	ontime1	30178.5002321	Sum of GTIs [s]
revision	2	Processing version of data	ontime2	30169.077321231	Sum of GTIs [s]
			ontime3	30172.218261659	Sum of GTIs [s]
			ontime6	30178.5002321	Sum of GTIs [s]
			l1events	1245664	Number of level 1 events

2.1.4 Events

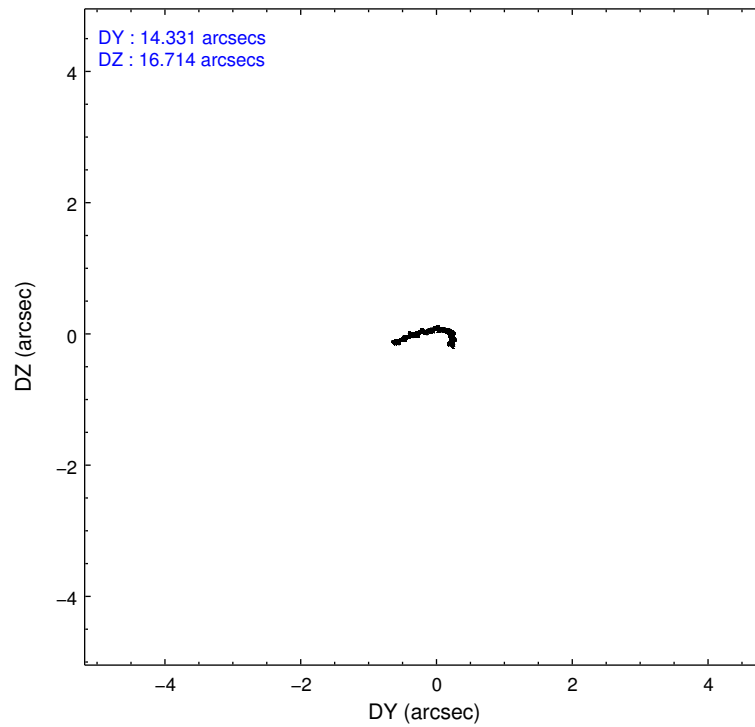
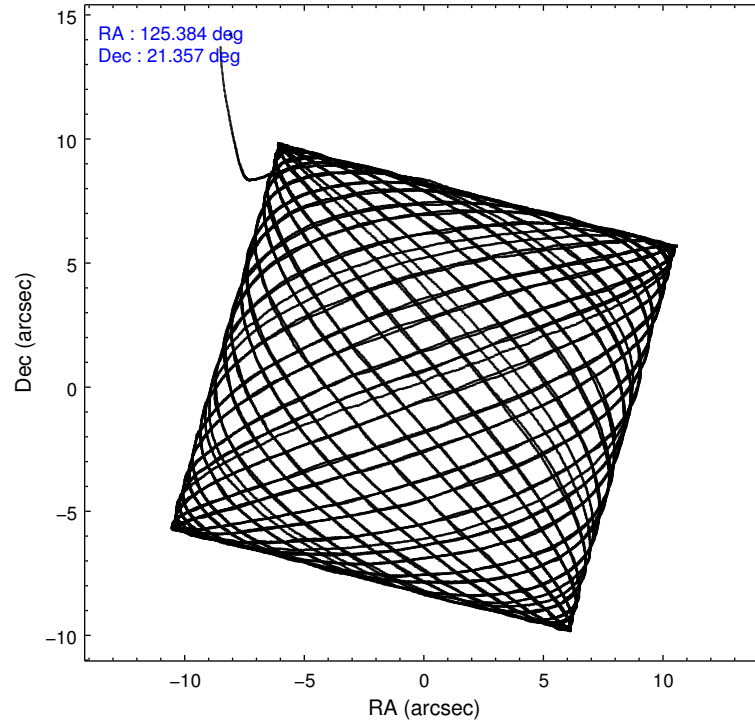
	ccd 0	ccd 1	ccd 2	ccd 3	ccd 6
level 1 events	235338	236645	269238	250425	254018
rejected events	211066	209233	244586	226908	229198
rejected %	89%	88%	90%	90%	90%

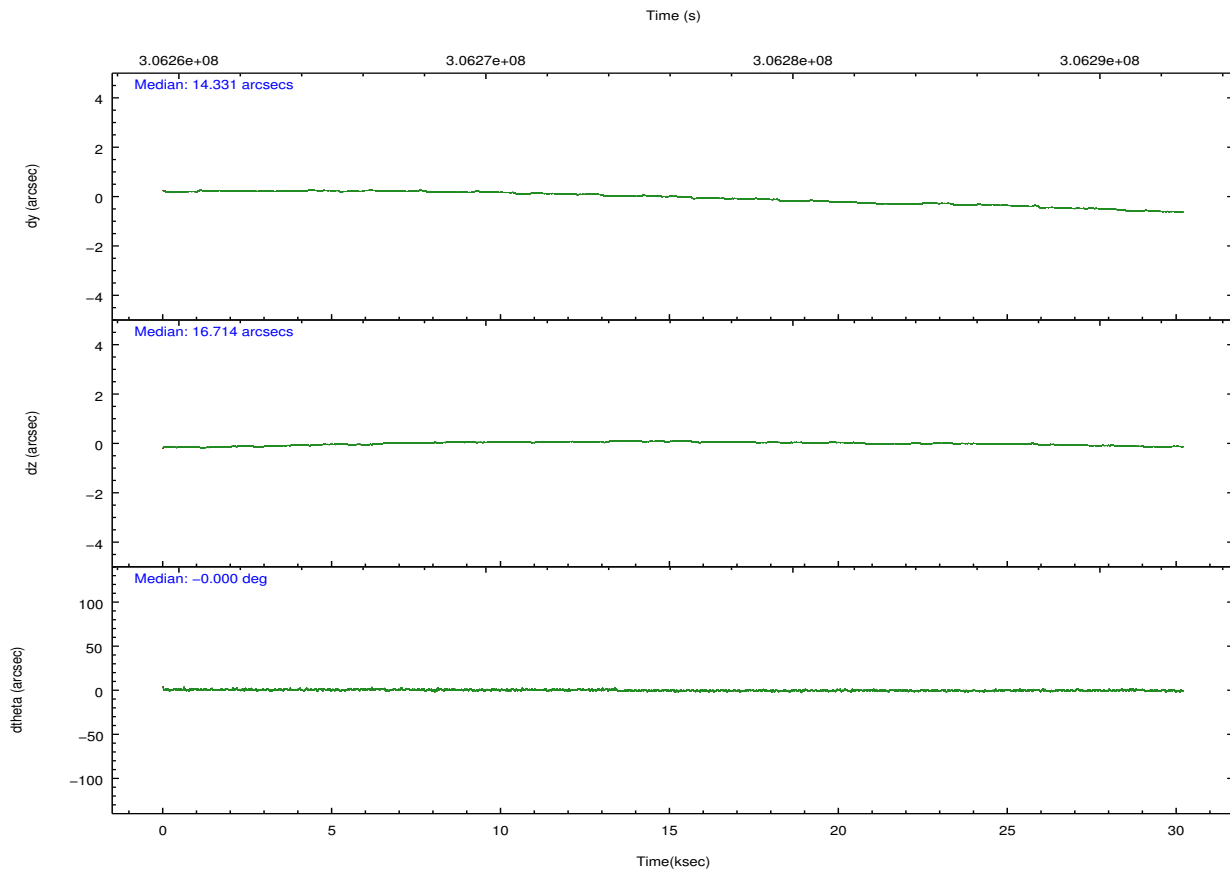
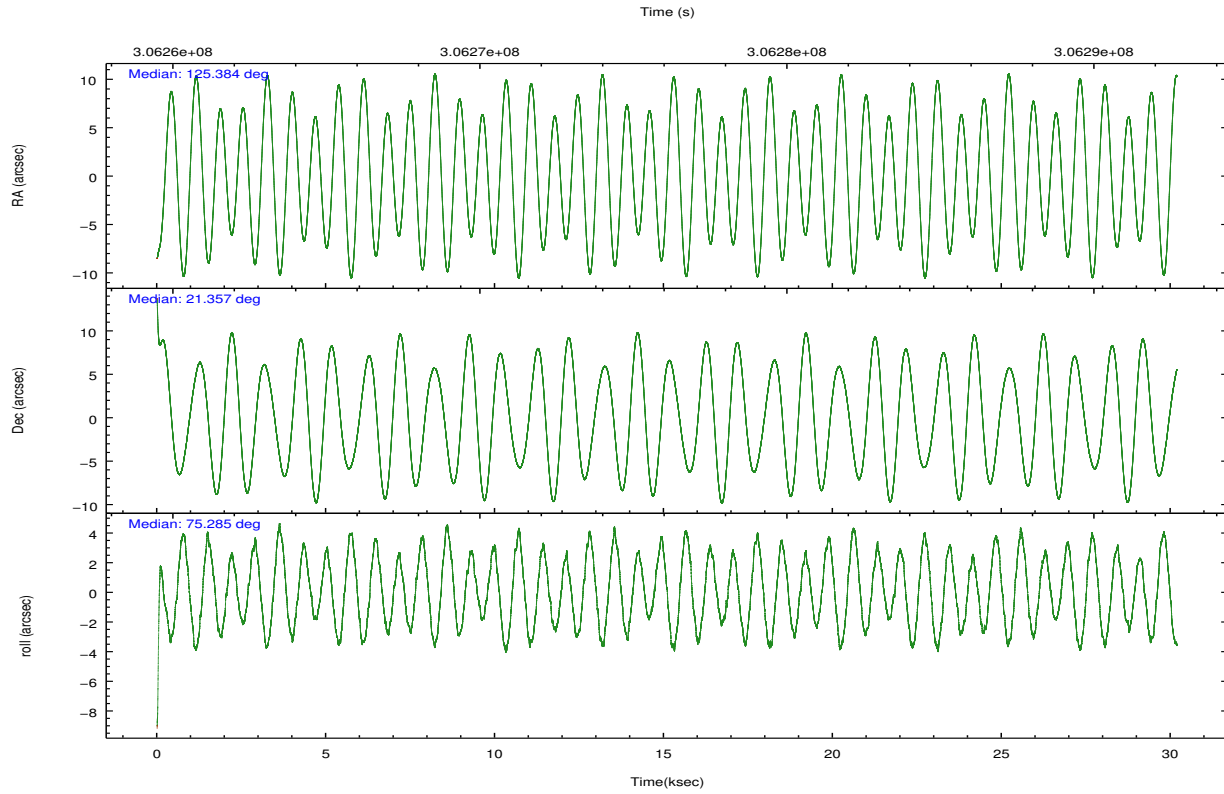
	ccd 0	ccd 1	ccd 2	ccd 3	ccd 6
grade 0 events	8656	10012	9138	8556	8623
	3%	4%	3%	3%	3%
grade 1 events	131	120	122	161	101
	0%	0%	0%	0%	0%
grade 2 events	6025	6289	6111	5206	5599
	2%	2%	2%	2%	2%
grade 3 events	2805	3093	2722	2776	2715
	1%	1%	1%	1%	1%
grade 4 events	2622	2995	2625	2659	2813
	1%	1%	0%	1%	1%
grade 5 events	8720	9791	8485	10282	9695
	3%	4%	3%	4%	3%
grade 6 events	4631	5551	4554	4805	5544
	1%	2%	1%	1%	2%
grade 7 events	201748	198794	235481	215980	218928
	85%	84%	87%	86%	86%

2.2 Compared Parameters

Parameter	Planned	Actual	Parameter	Planned	Actual
Instrument	ACIS	ACIS	Obspar format version number	7	7
Detector	ACIS-01236	ACIS-01236	Obspar file type	PREDICTED	ACTUAL
Grating	NONE	NONE	Obspar update status	NONE	UPDATED
Data mode	VFAINT	VFAINT	CCD I0 on	Y	Y
Observation mode	POINTING	POINTING	CCD I1 on	Y	Y
[deg] Pointing RA	125.392094	125.3841909573998	CCD I2 on	Y	Y
[deg] Pointing Dec	21.330856	21.35736486250491	CCD I3 on	Y	Y
[deg] Pointing Roll	75.079968	75.29151990405039	CCD S0 on	N	N
[mm] SIM focus pos	-0.782348	-0.7809083437167272	CCD S1 on	N	N
[mm] SIM defocus	0	0.001439871863259334	CCD S2 on	O1	Y
[mm] SIM translation stage pos	-233.592463	-233.5874344608287	CCD S3 on	N	N
[mm] SIM translation stage offset	0	-0.005018542100998502	CCD S4 on	N	N
[s] Observation start time (MET)	306261192.184000	306259905.51778	CCD S5 on	N	N
Observation start date	2007-09-15T16:32:07	2007-09-15T16:11:45	Number of optional ACIS chips dropped	0	0
[s] Observation end time (MET)	306291192.184000	306292292.44434	On-chip summing requested	N	N
Observation end date	2007-09-16T00:52:07	2007-09-16T01:11:32	Subarray requested	NONE	NONE
Read mode	TIMED	TIMED	Alternating exposures requested	N	N
			[s] Primary exposure time	0.000000	3.1

2.3 Aspect



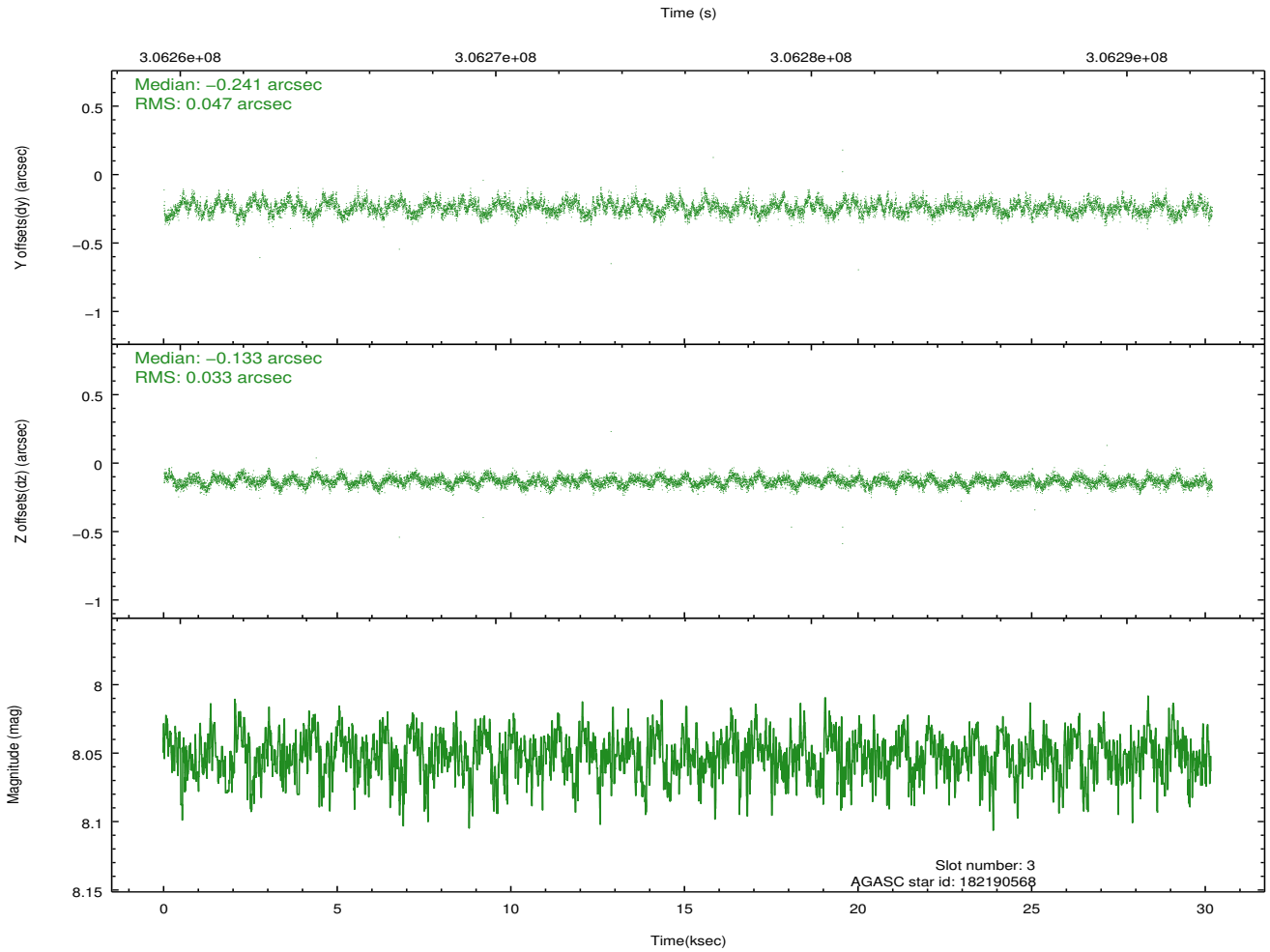
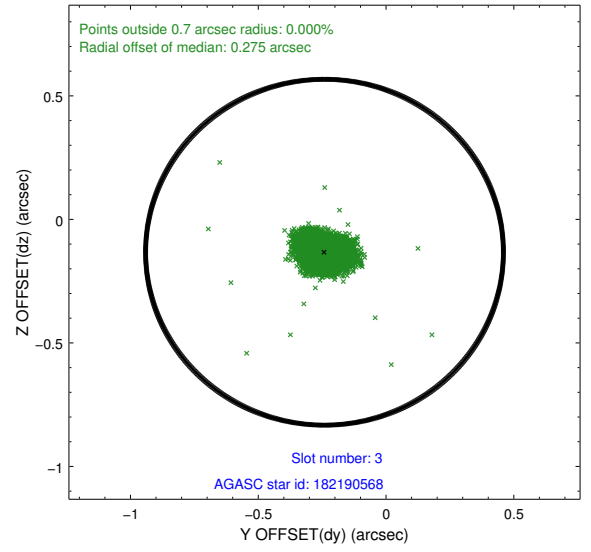
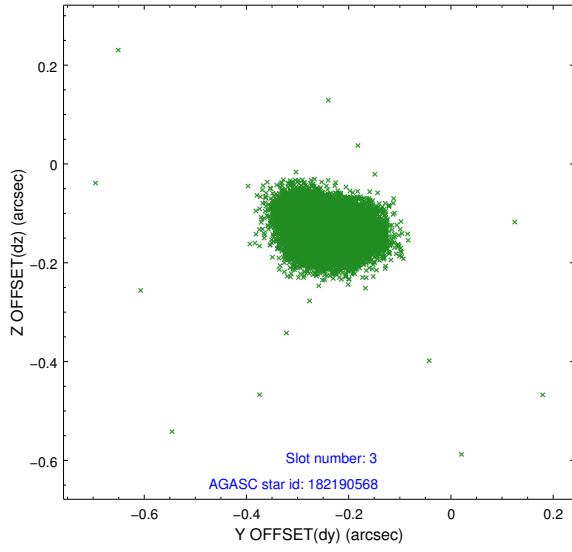


Slot Statistics

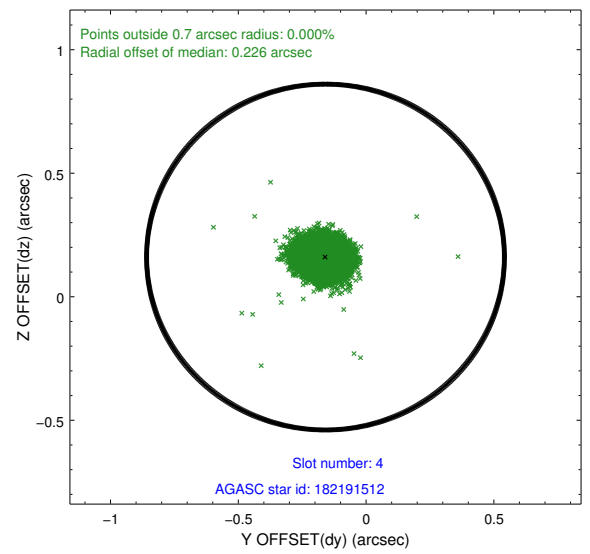
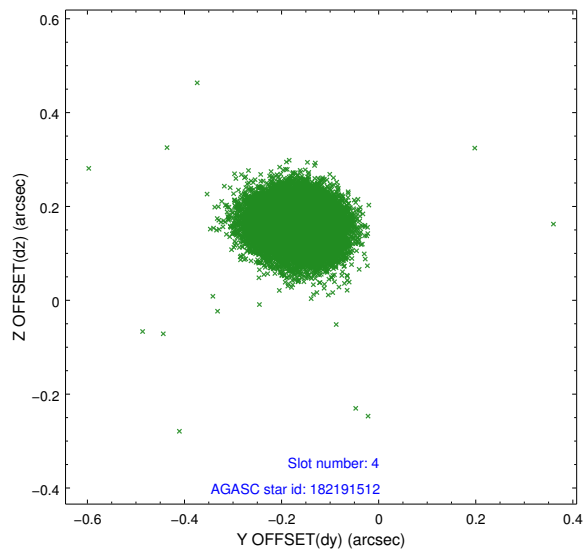
slot	status	id	mag	n_pts	med_dy	med_dz	dr1	dr2	ra	dec	mean_y	mean_z
0	FID	ACIS-I-1	7.22	7363	0.015	0.009	0.009	0.015	0.000000	0.000000	925.20	-840.36
1	FID	ACIS-I-2	7.14	7362	-0.105	-0.047	0.012	0.018	0.000000	0.000000	-768.97	-846.84
2	FID	ACIS-I-6	7.23	7362	-0.002	0.106	0.010	0.016	0.000000	0.000000	390.87	1701.53
3	GUIDE	182190568	8.05	14724	-0.241	-0.133	0.060	0.098	125.270475	22.031708	2333.34	1042.11
4	GUIDE	182191512	8.19	14719	-0.159	0.161	0.067	0.107	125.905406	21.821214	2150.53	-1201.99
5	GUIDE	182195136	8.56	14720	0.242	0.025	0.062	0.103	124.931899	20.918080	-1831.75	1113.13
6	GUIDE	182202936	7.82	14726	0.103	-0.129	0.070	0.112	124.849962	21.257255	-721.51	1689.86
7	GUIDE	182326096	9.36	14707	0.054	0.076	0.116	0.191	126.208179	21.812453	2384.80	-2187.32

2.4 Star Slots

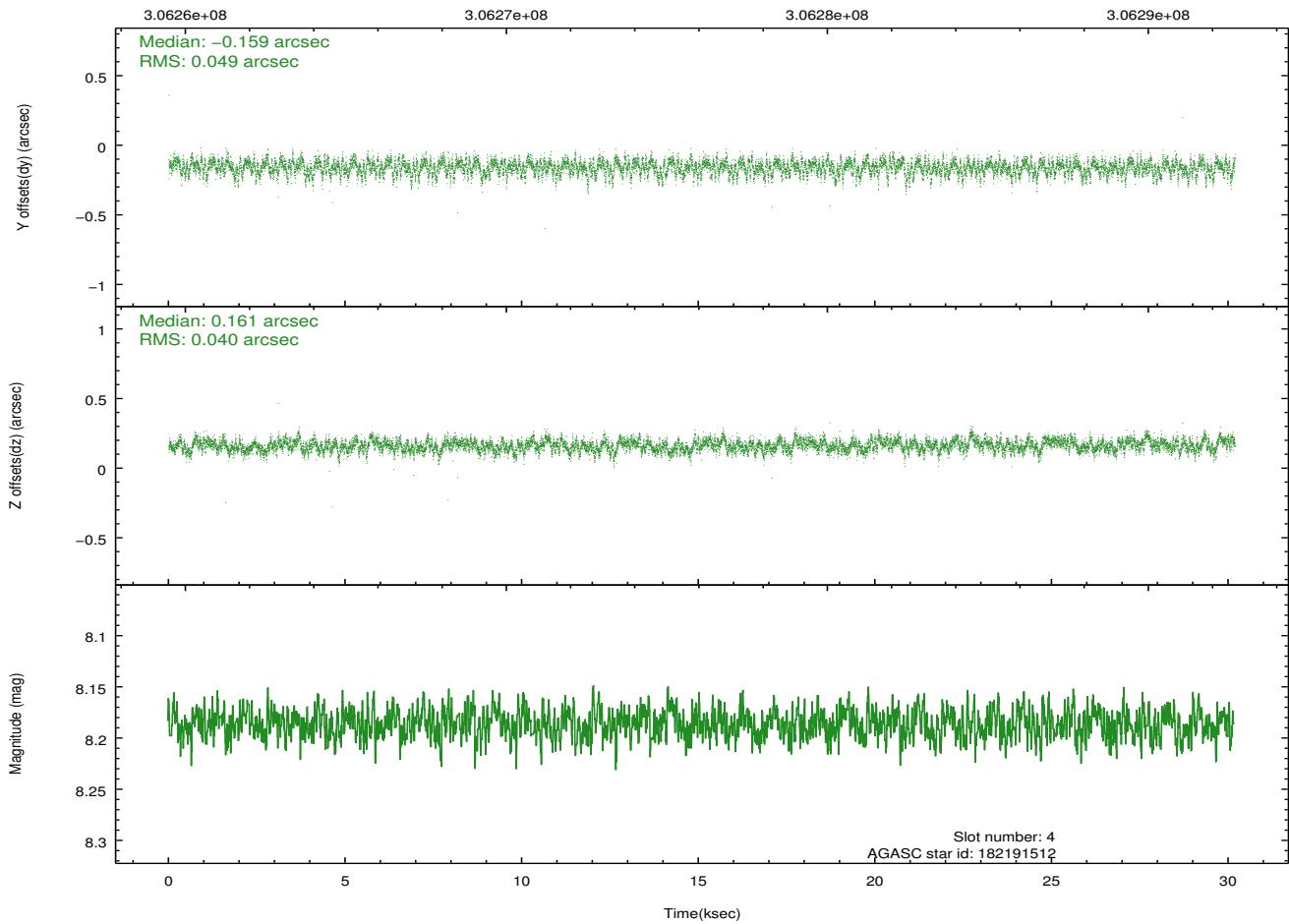
2.4.1 Slot 3



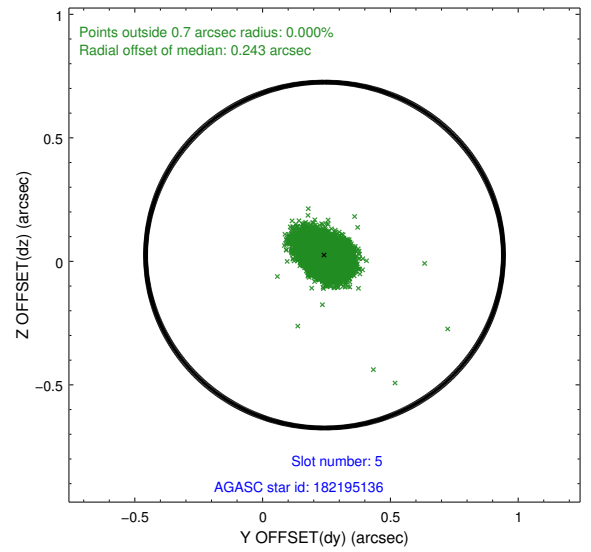
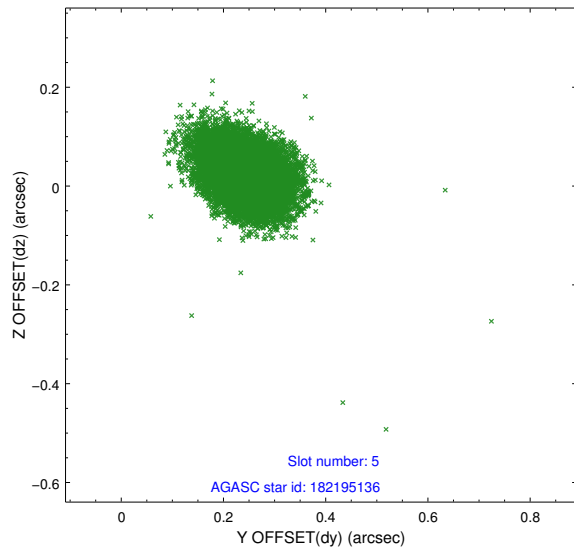
2.4.2 Slot 4



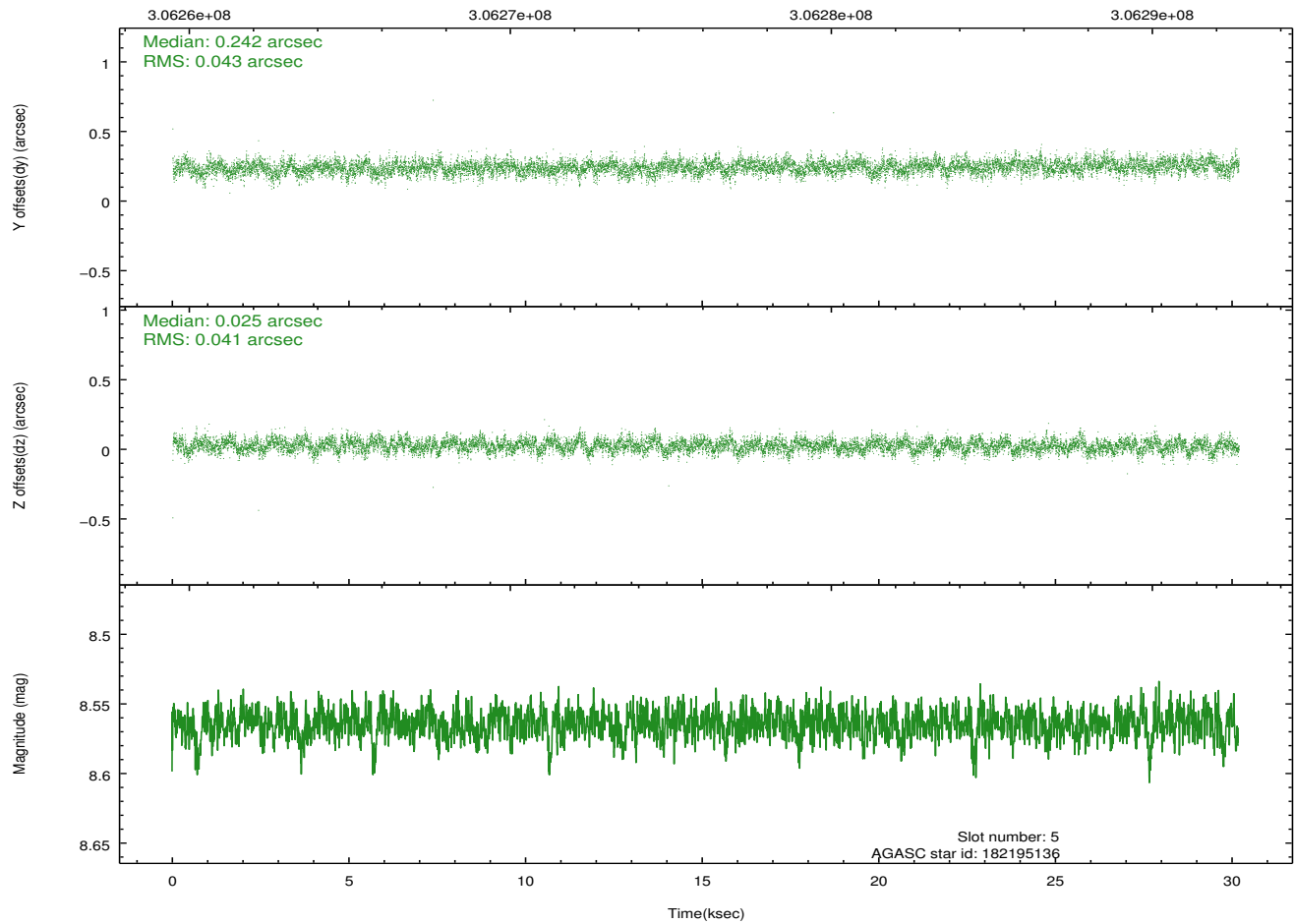
Time (s)



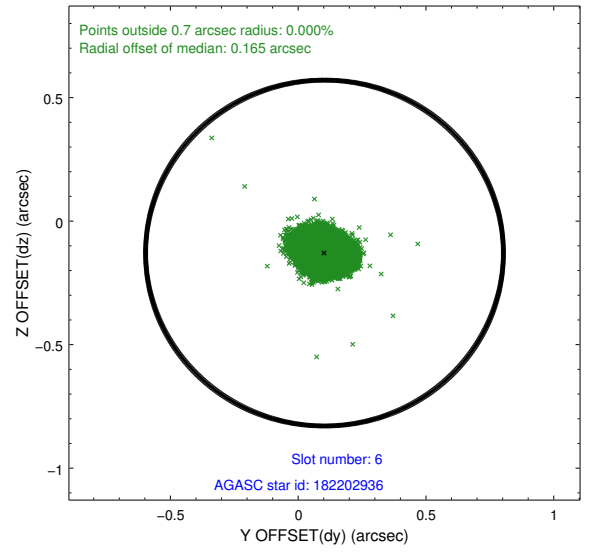
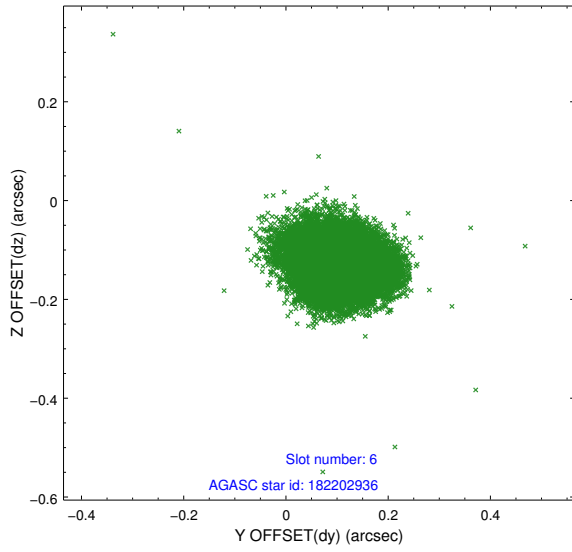
2.4.3 Slot 5



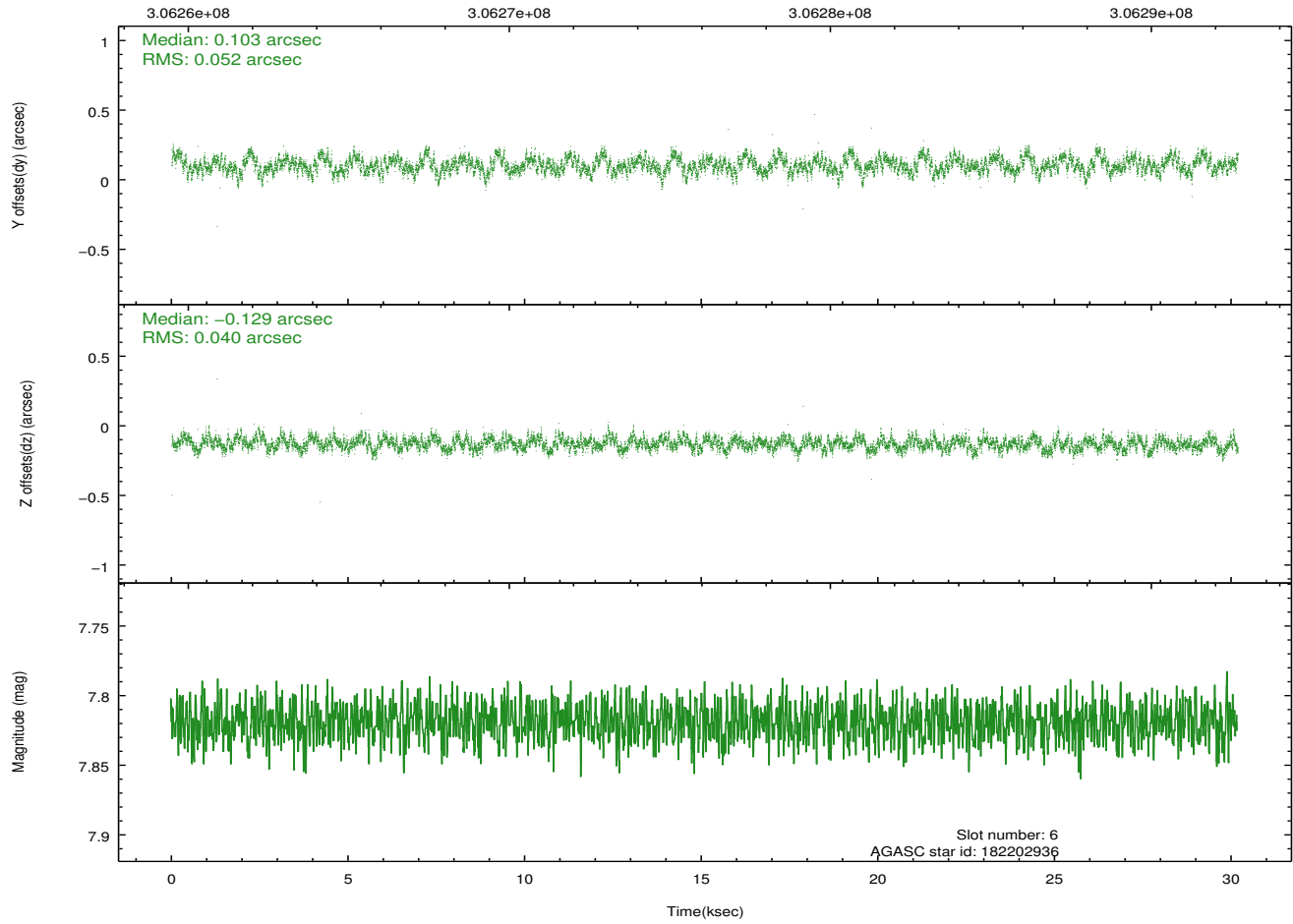
Time (s)



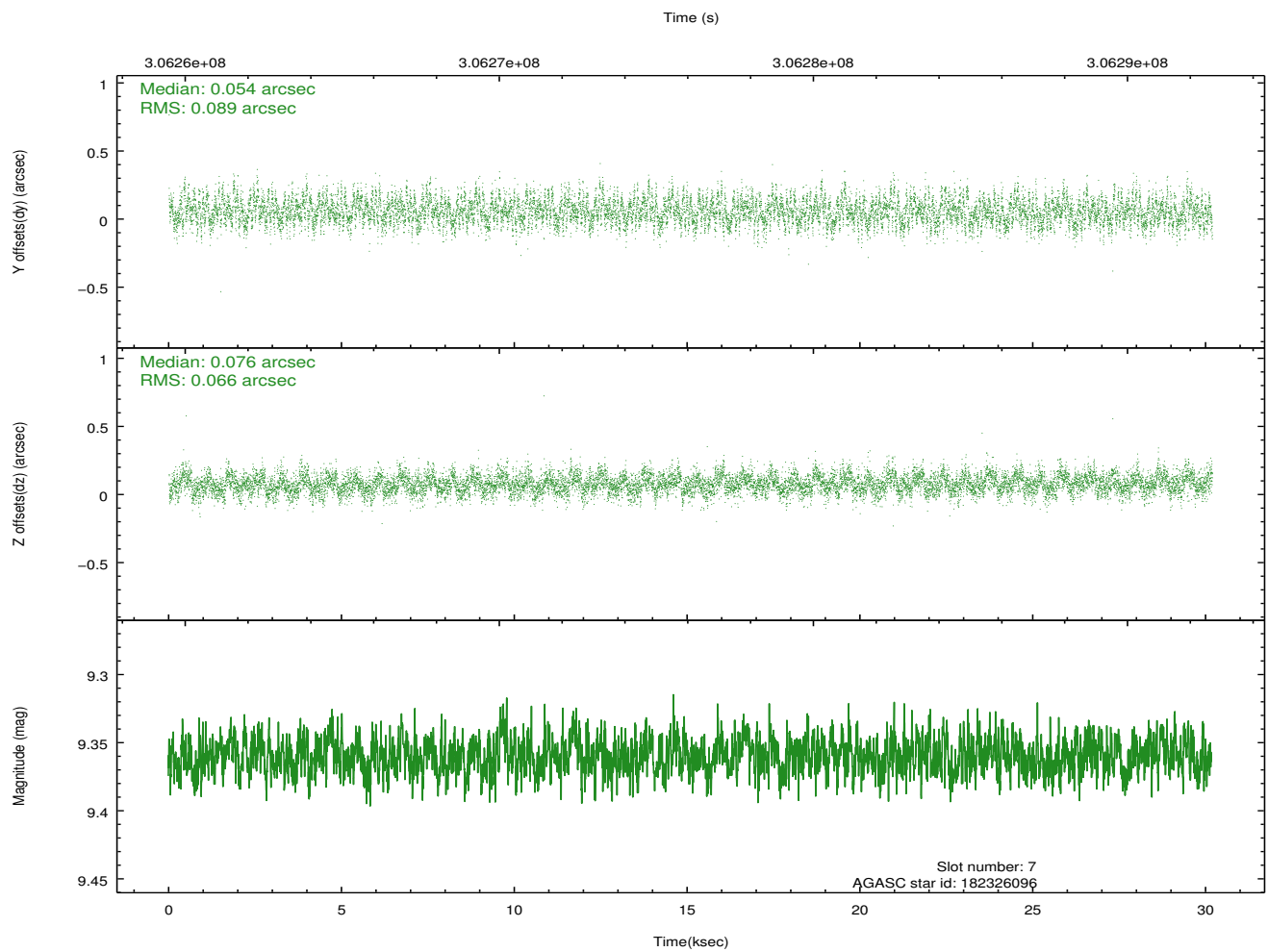
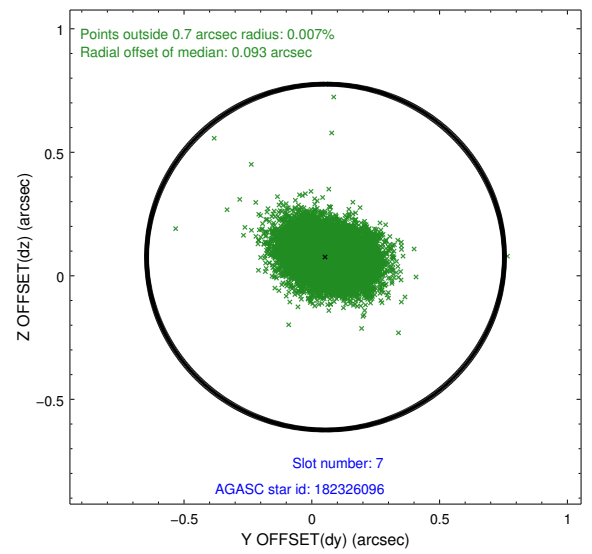
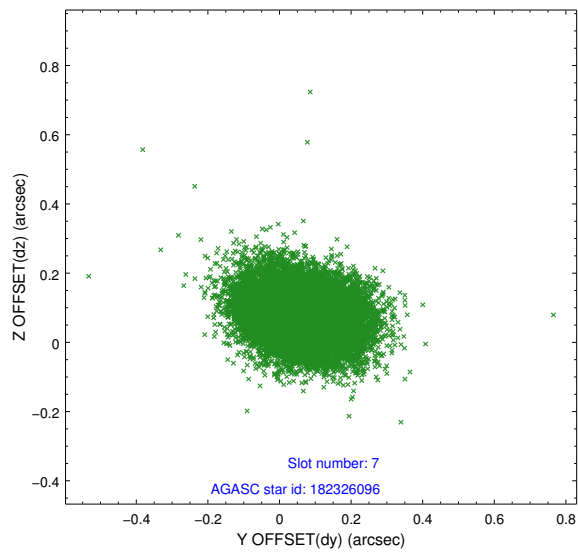
2.4.4 Slot 6



Time (s)

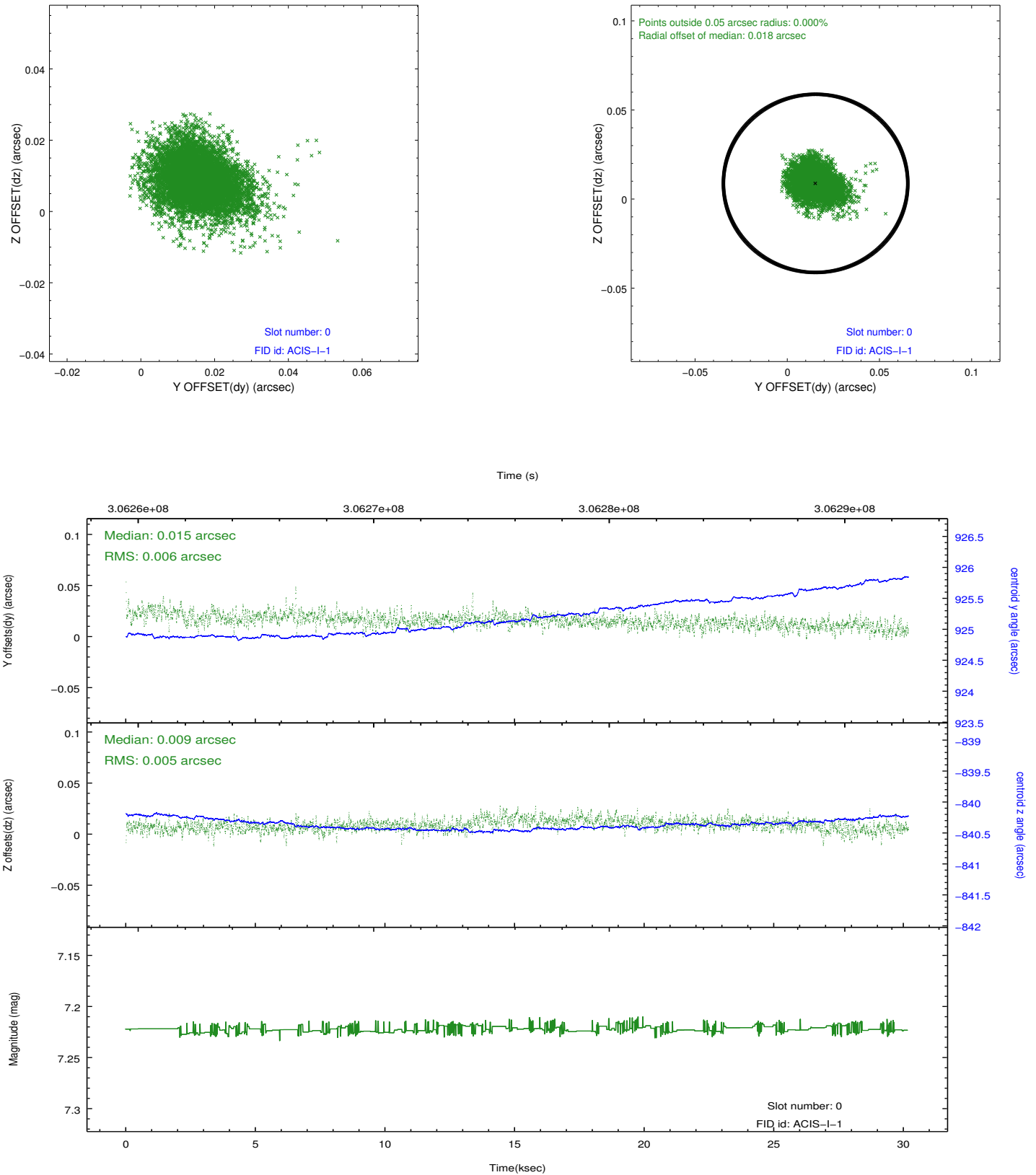


2.4.5 Slot 7

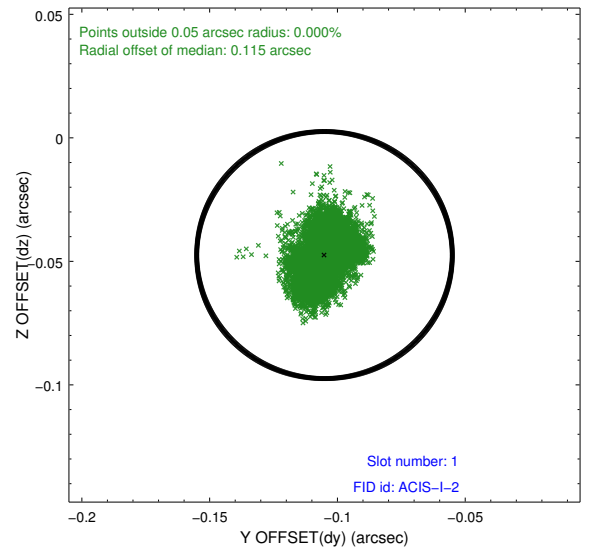
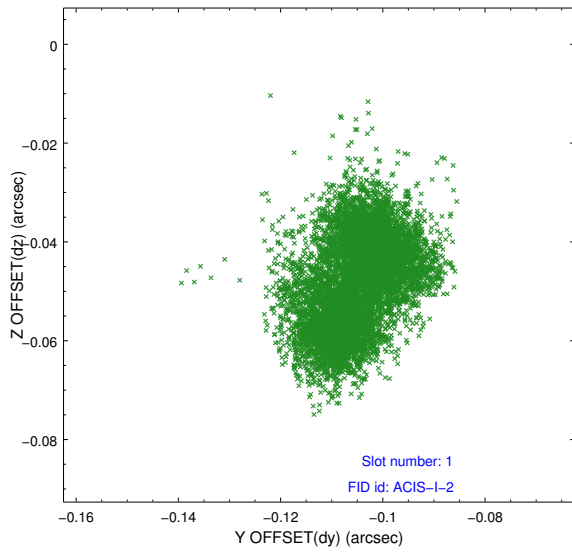


2.5 FID Slots

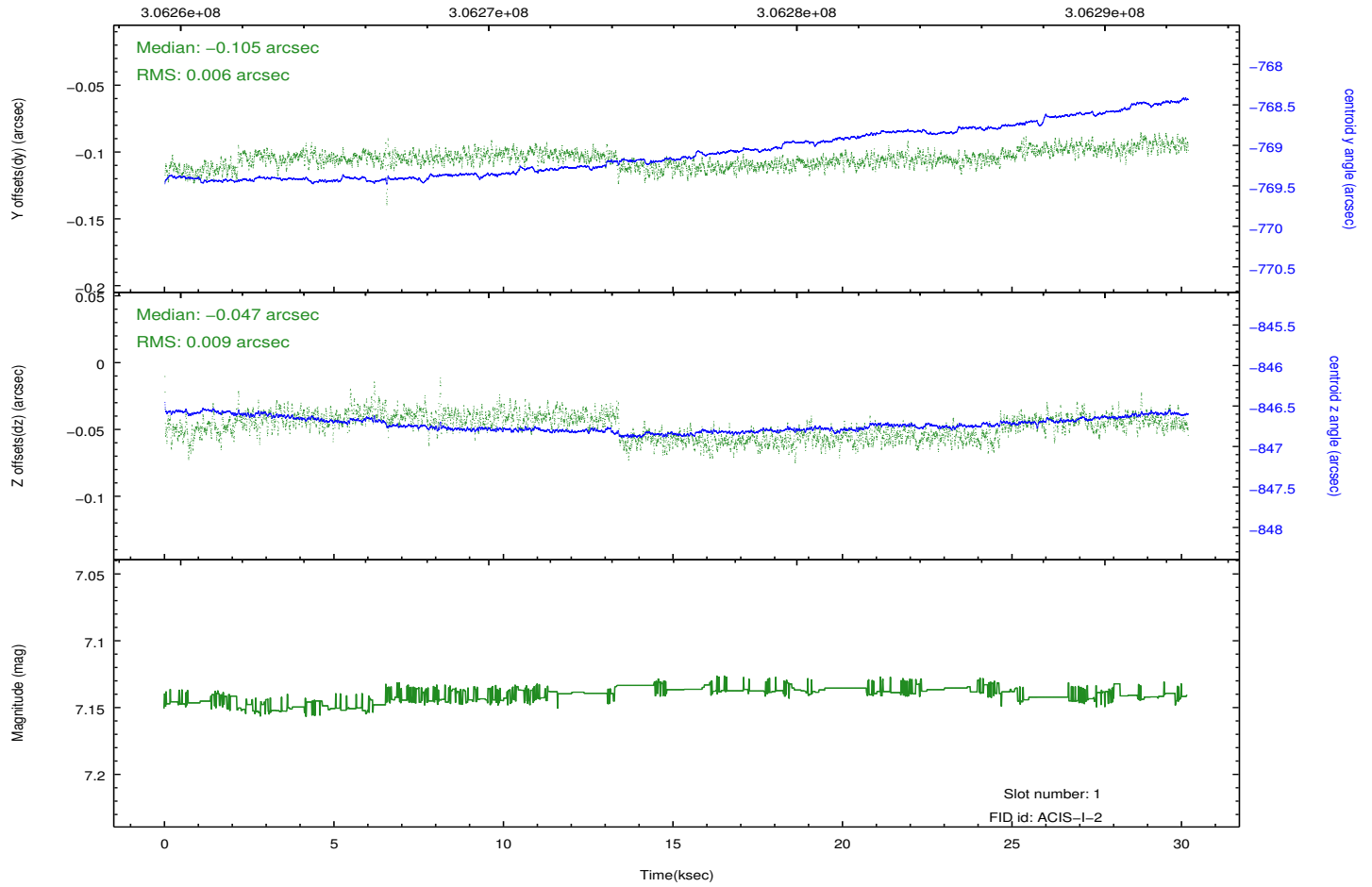
2.5.1 Slot 0



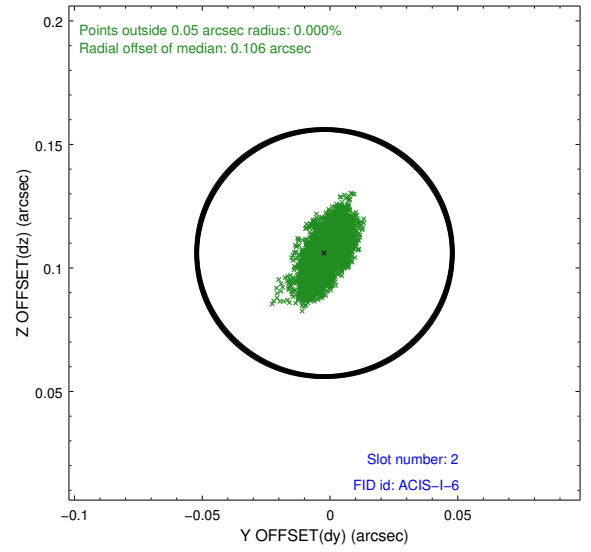
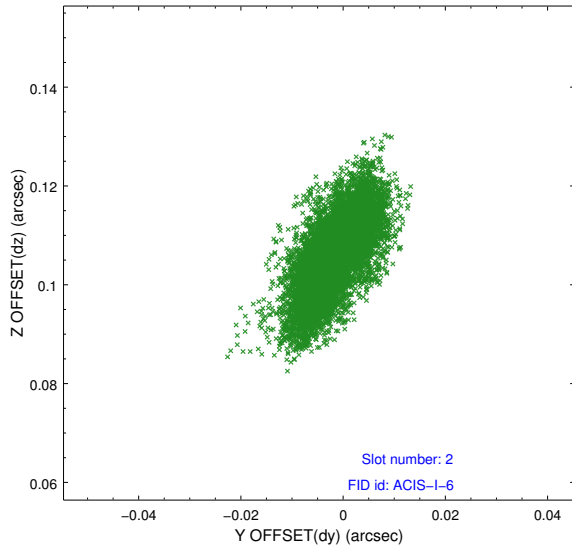
2.5.2 Slot 1



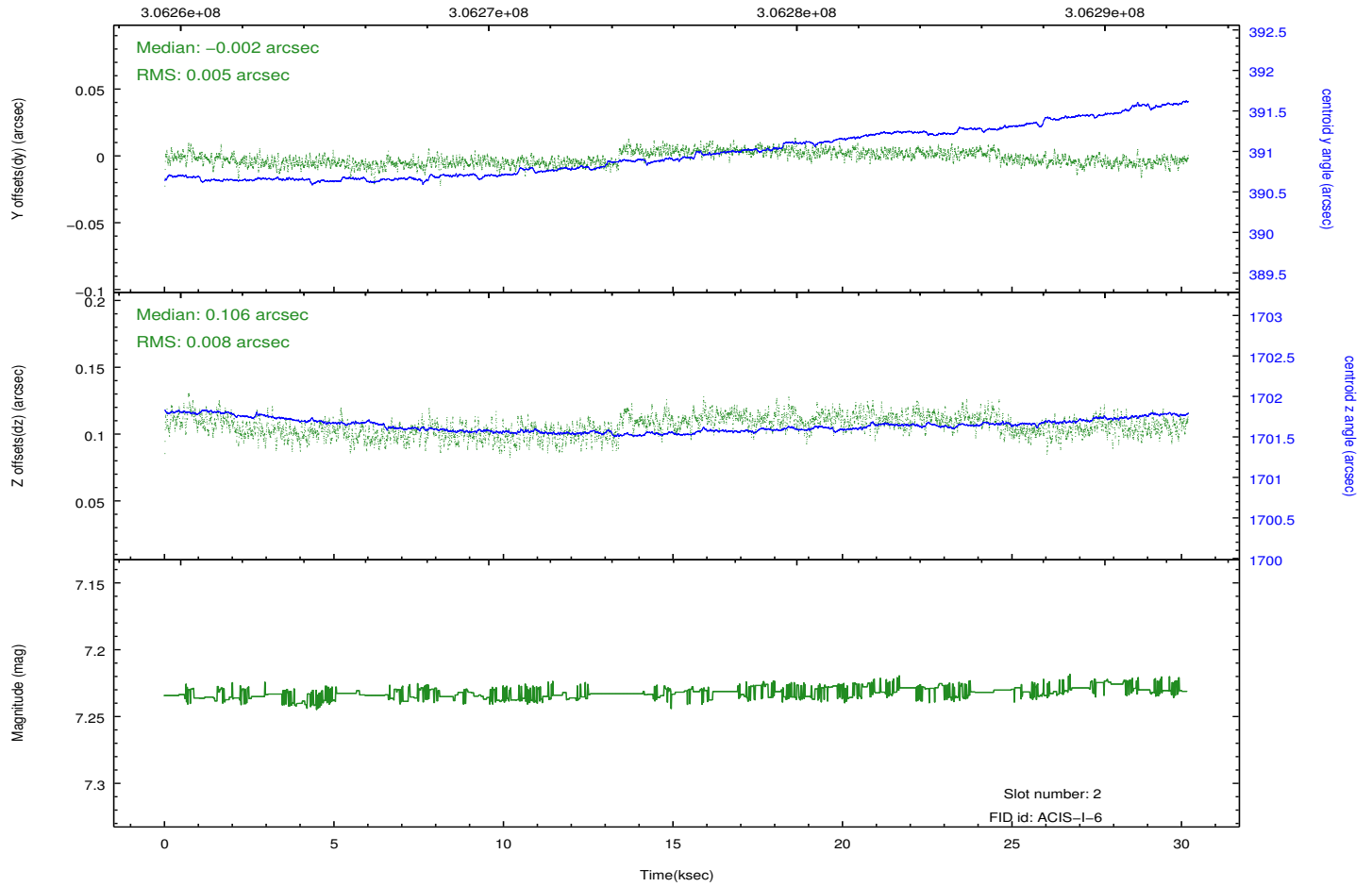
Time (s)



2.5.3 Slot 2



Time (s)



A Summary

A.1 Status

V&V Scientist	Jen Lauer
V&V Date (YYYY-MM-DD)	2012.05.03
V&V Edition	1
V&V Disposition and Status	OK
V&V Charge Time	30.1722182

A.2 Comments