

V&V Reference Report

L2 ASCDS Version : 8.4.4

Observation 8171 - L2 Version 2
Chandra X-Ray Center

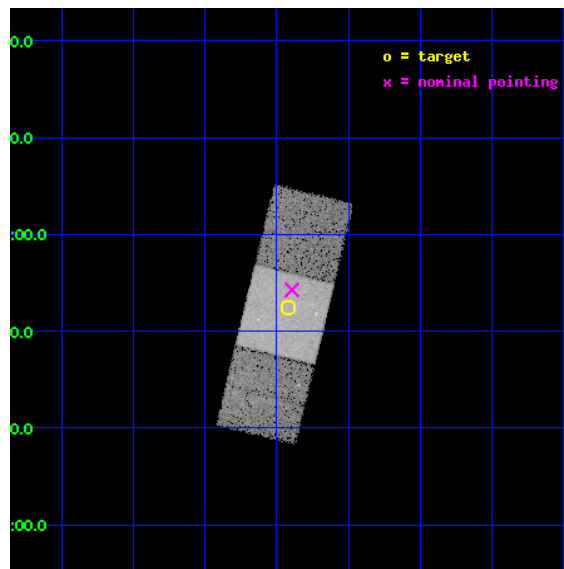
L2 Processing Date : May 1 2012

Contents

1	Front	2
2	OBI	3
2.1	OBI	3
2.1.1	Images	3
2.1.2	Bias	3
2.1.3	Parameters	4
2.1.4	Events	4
2.2	Compared Parameters	5
2.3	Aspect	6
2.4	Star Slots	9
2.4.1	Slot 3	9
2.4.2	Slot 4	10
2.4.3	Slot 5	11
2.4.4	Slot 6	12
2.4.5	Slot 7	13
2.5	FID Slots	14
2.5.1	Slot 0	14
2.5.2	Slot 1	15
2.5.3	Slot 2	16
A	Summary	17
A.1	Status	17
A.2	Comments	17

1 Front

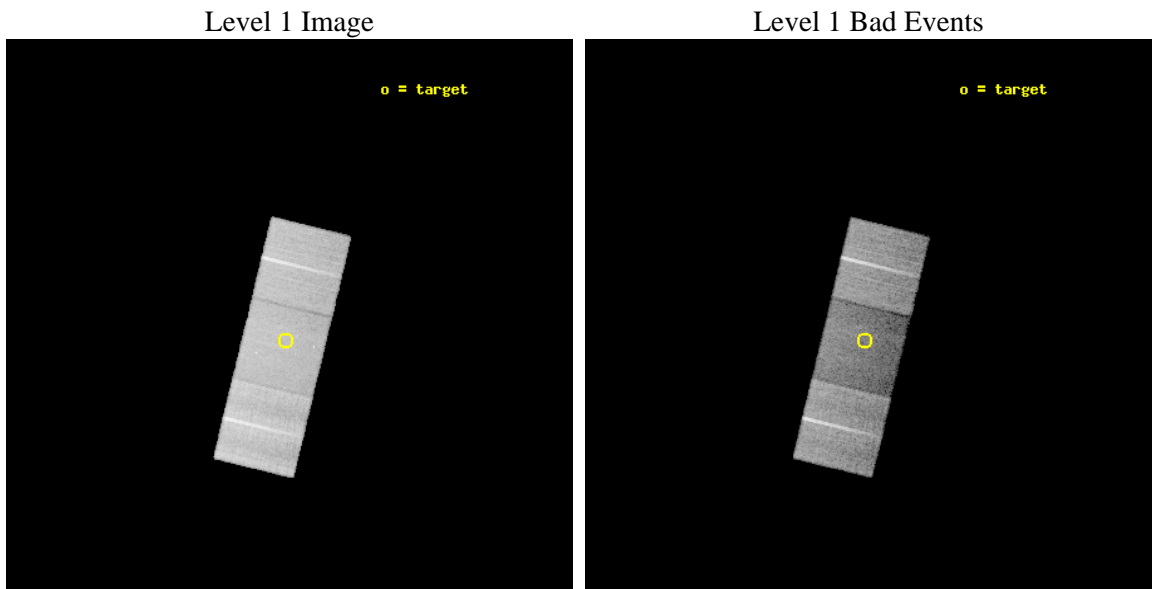
seq_num	600608	Sequence number
obs_id	8171	Observation id
title	Compact Galaxy Groups: Building Blocks of Galaxy Clusters and Massive Ellipticals	Proposal title
observer	Professor Gordon Garmire	Principal investigator
object	HCG 7	Source name
dtcycle	0	
cycle	P	events from which exps? Prim/Second/Both
ra_targ	9.854167	Observer's specified target RA [deg]
dec_targ	0.874722	Observer's specified target Dec [deg]
ra_nom	9.8486206852812	Nominal RA [deg]
dec_nom	0.90460697307904	Nominal Dec [deg]
roll_nom	103.65671847404	Nominal Roll [deg]
revision	2	Processing version of data
ontime	19421.500149369	Sum of GTIs [s]
livetime	19167.743952017	Livetime [s]
ontime6	19418.35917896	Sum of GTIs [s]
ontime7	19421.500149369	Sum of GTIs [s]
ontime8	19418.359159112	Sum of GTIs [s]
l2events	96494	Number of level 2 events



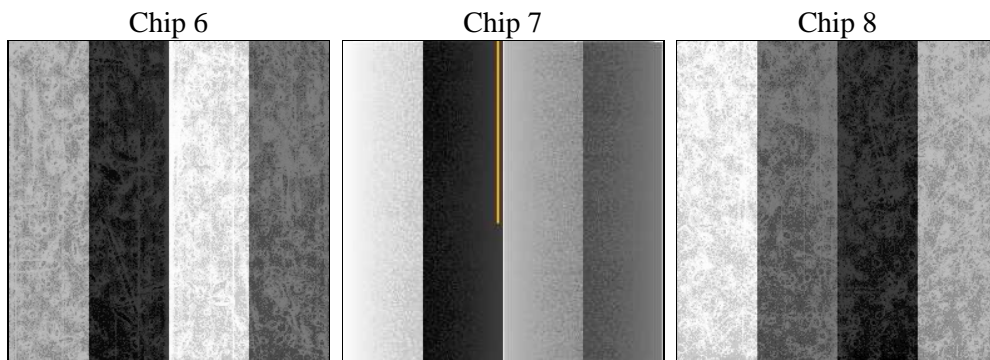
2 OBI

2.1 OBI

2.1.1 Images



2.1.2 Bias



2.1.3 Parameters

obi_num	0	Obi number	sched_exp_time	19295.635000	[s] Scheduled observation exposure time
ascdsver	8.4.4	Processing system revision	ontime	19421.500149369	Sum of GTIs [s]
caldsver	4.4.9	 	ontime6	19418.35917896	Sum of GTIs [s]
date	2012-05-01T04:43:10	Date and time of file creation	ontime7	19421.500149369	Sum of GTIs [s]
revision	2	Processing version of data	ontime8	19418.359159112	Sum of GTIs [s]
			l1events	501709	Number of level 1 events

2.1.4 Events

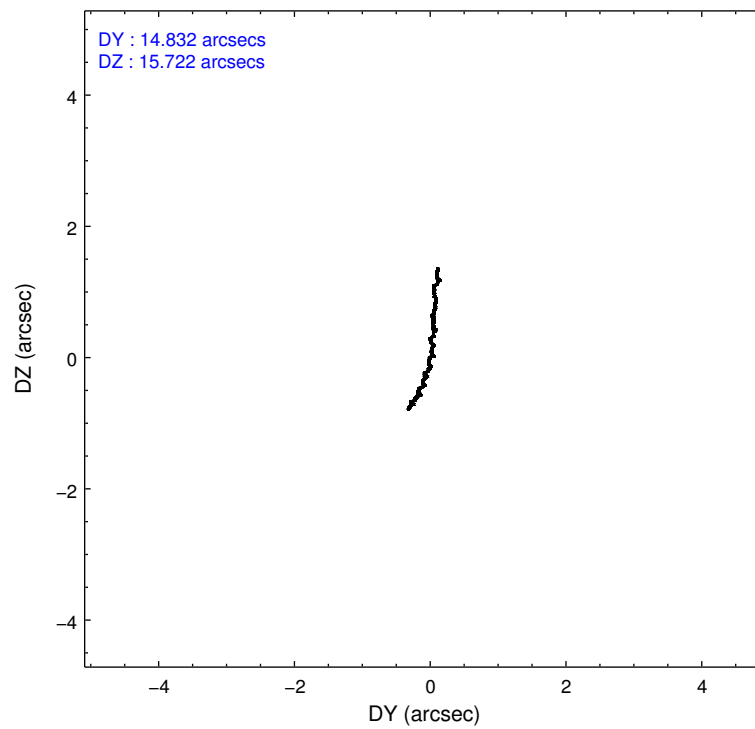
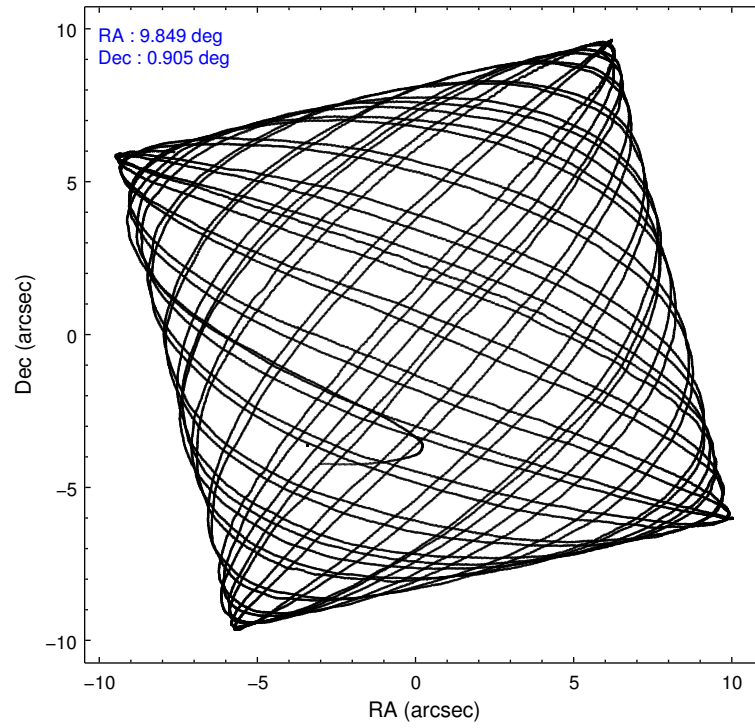
	ccd 6	ccd 7	ccd 8
level 1 events	158003	148197	195509
rejected events	142753	76966	149103
rejected %	90%	51%	76%

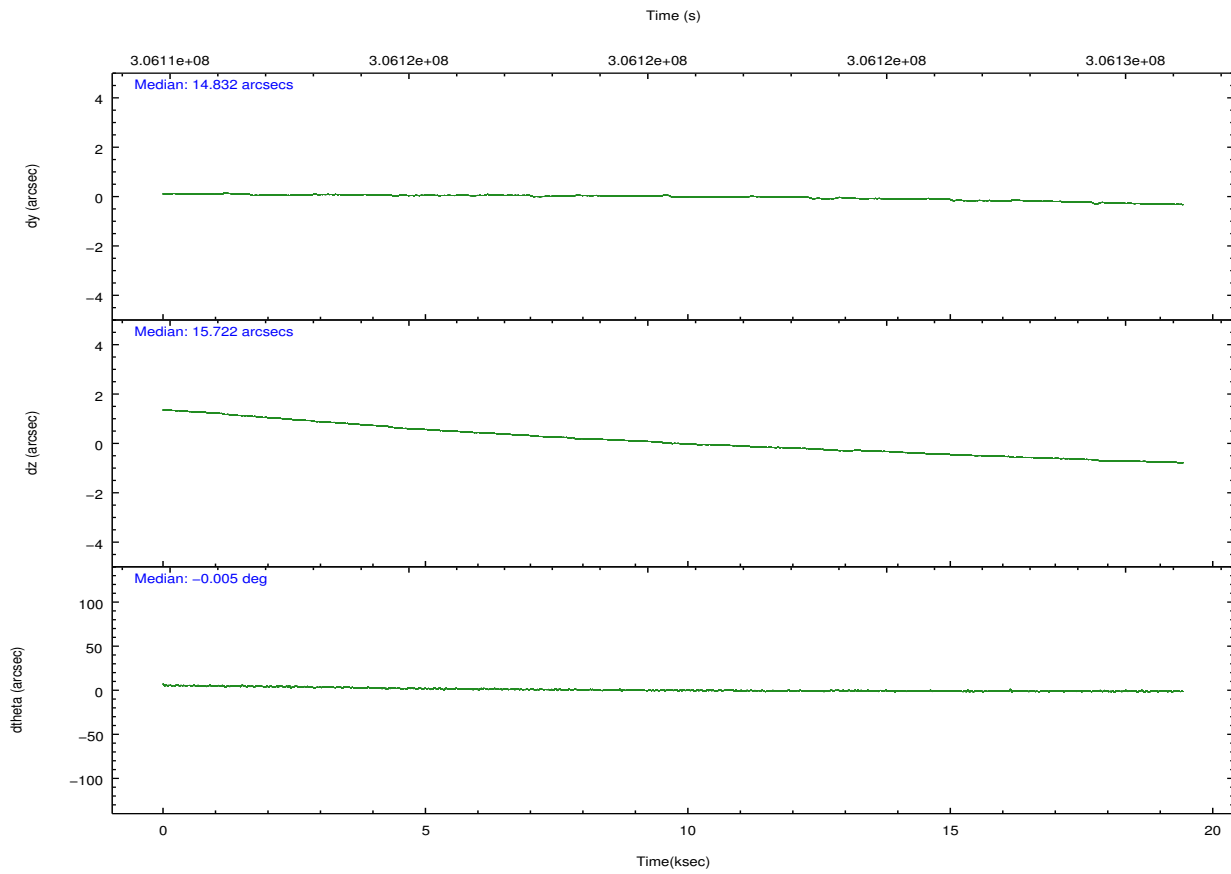
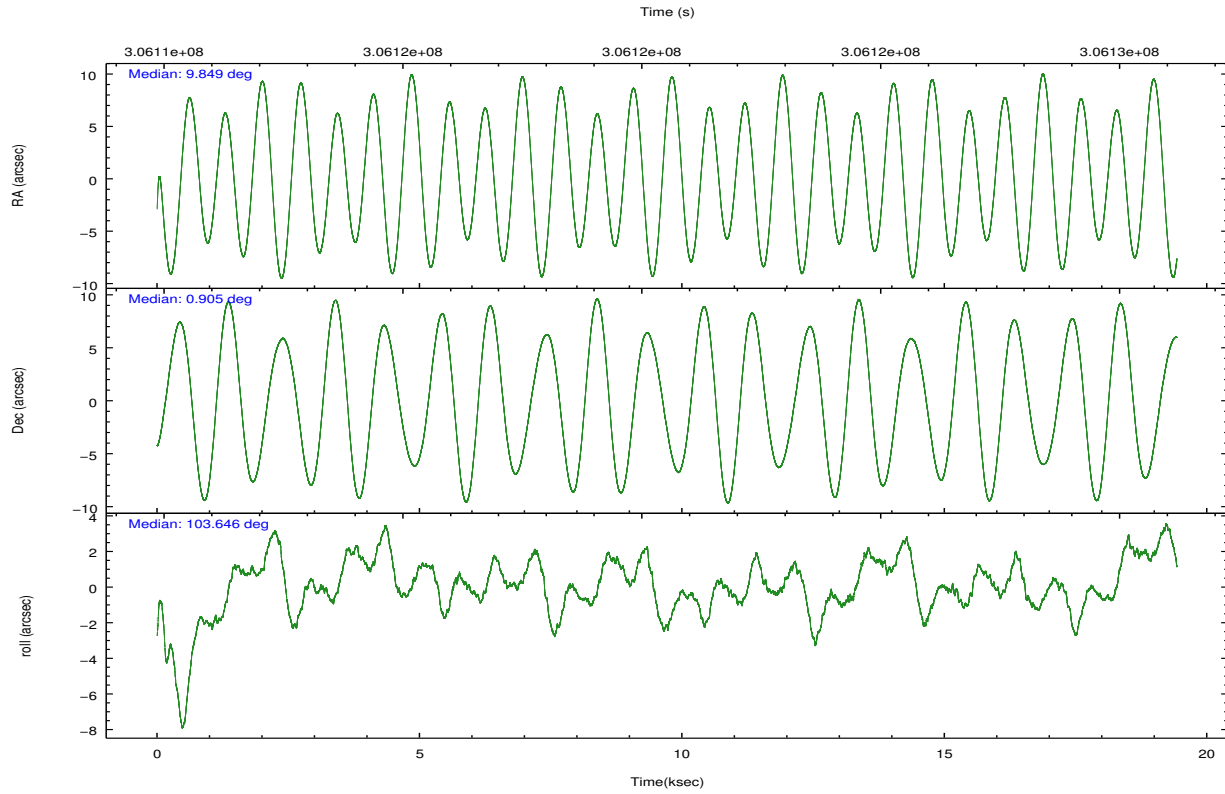
	ccd 6	ccd 7	ccd 8
grade 0 events	5810	7970	13277
	3%	5%	6%
grade 1 events	71	218	177
	0%	0%	0%
grade 2 events	3547	15724	11526
	2%	10%	5%
grade 3 events	1729	7060	5370
	1%	4%	2%
grade 4 events	1681	7004	5019
	1%	4%	2%
grade 5 events	5326	15806	8305
	3%	10%	4%
grade 6 events	3145	36435	13378
	1%	24%	6%
grade 7 events	136694	57980	138457
	86%	39%	70%

2.2 Compared Parameters

Parameter	Planned	Actual	Parameter	Planned	Actual
Instrument	ACIS	ACIS	Obspar format version number	7	7
Detector	ACIS-678	ACIS-678	Obspar file type	PREDICTED	ACTUAL
Grating	NONE	NONE	Obspar update status	NONE	UPDATED
Data mode	VFAINT	VFAINT	Number of optional ACIS chips dropped	0	0
Observation mode	POINTING	POINTING	On-chip summing requested	N	N
[deg] Pointing RA	9.867797	9.84862068528119	Subarray requested	NONE	NONE
[deg] Pointing Dec	0.885074	0.9046069730790363	Alternating exposures requested	N	N
[deg] Pointing Roll	103.499792	103.6567184740435	[s] Primary exposure time	0.000000	3.1
[mm] SIM focus pos	-0.684267	-0.6828225247311905			
[mm] SIM defocus	0	0.001444936568705701			
[mm] SIM translation stage pos	-190.132523	-190.1425803651734			
[mm] SIM translation stage offset	0	0.01005778216563158			
[s] Observation start time (MET)	306110952.184000	306109690.73555			
Observation start date	2007-09-13T22:48:07	2007-09-13T22:28:10			
[s] Observation end time (MET)	306130248.184000	306130471.07405			
Observation end date	2007-09-14T04:09:43	2007-09-14T04:14:31			
Read mode	TIMED	TIMED			

2.3 Aspect



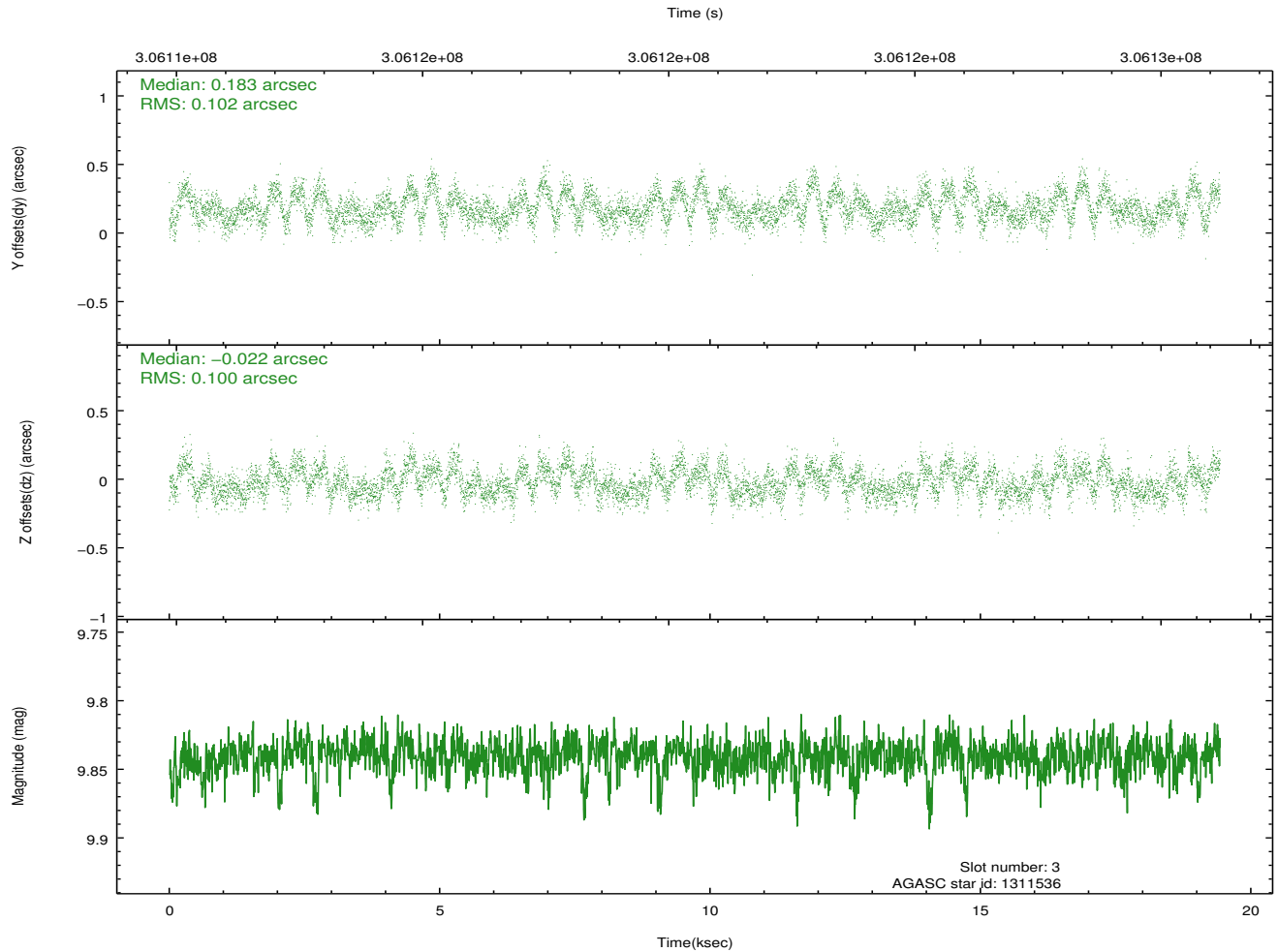
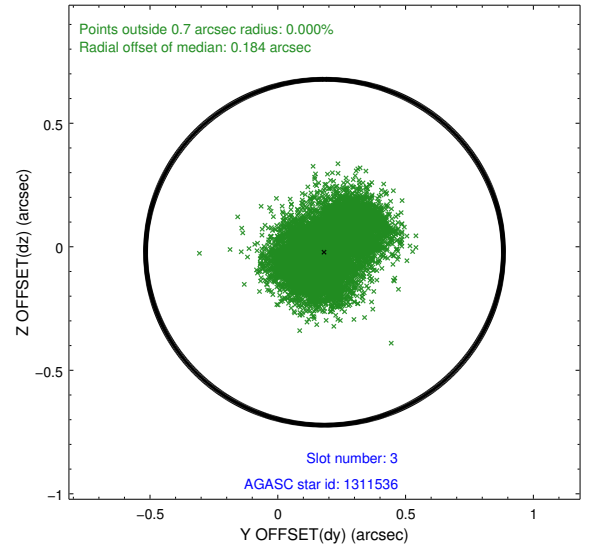
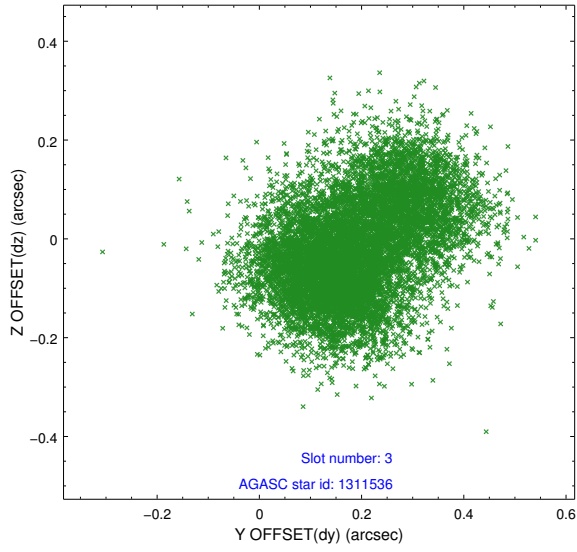


Slot Statistics

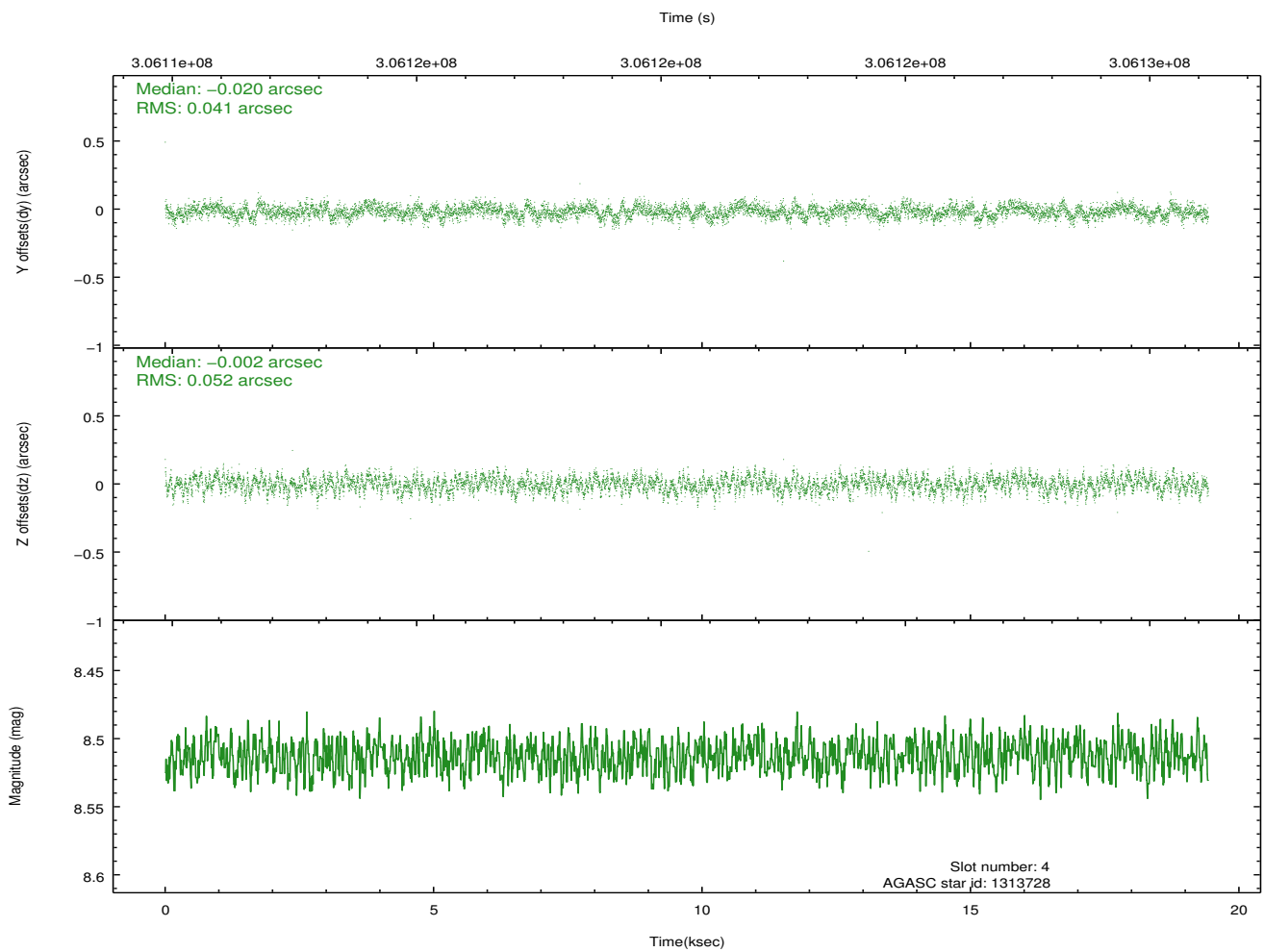
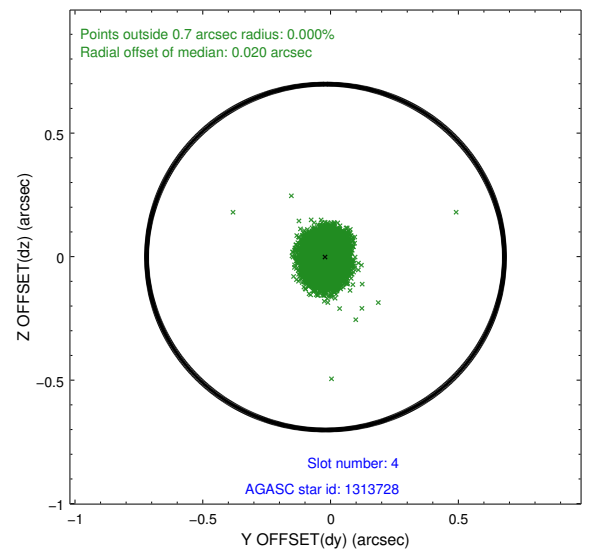
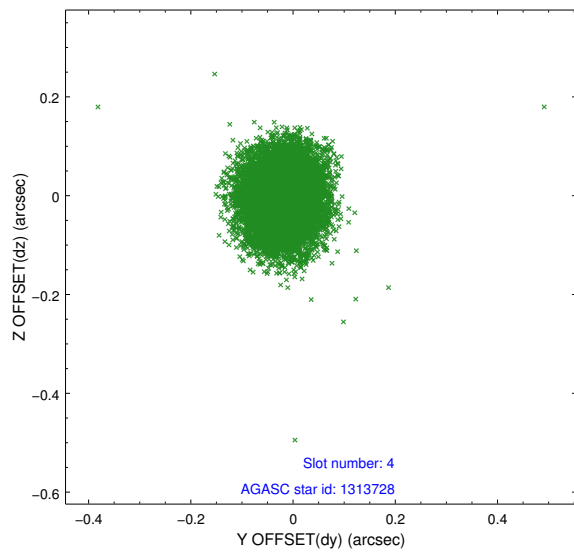
slot	status	id	mag	n_pts	med_dy	med_dz	dr1	dr2	ra	dec	mean_y	mean_z
0	FID	ACIS-S-1	7.18	4737	0.028	-0.083	0.028	0.038	0.000000	0.000000	928.29	-1732.90
1	FID	ACIS-S-4	7.19	4739	0.159	0.045	0.016	0.023	0.000000	0.000000	2145.94	171.17
2	FID	ACIS-S-5	7.22	4738	-0.217	0.047	0.014	0.023	0.000000	0.000000	-1820.57	165.01
3	GUIDE	1311536	9.84	9470	0.183	-0.022	0.155	0.241	9.611725	0.209714	-2148.84	1463.85
4	GUIDE	1313728	8.51	9474	-0.020	-0.002	0.071	0.113	9.948618	1.012743	378.93	-389.60
5	GUIDE	1314512	9.55	9468	-0.110	-0.121	0.107	0.173	9.488193	0.437625	-1247.49	1704.69
6	GUIDE	1446568	9.38	9470	0.032	0.054	0.096	0.155	10.345096	0.709207	-1016.24	-1523.14
7	GUIDE	1449360	8.90	9470	-0.094	0.091	0.087	0.137	10.210501	1.173717	722.78	-1441.67

2.4 Star Slots

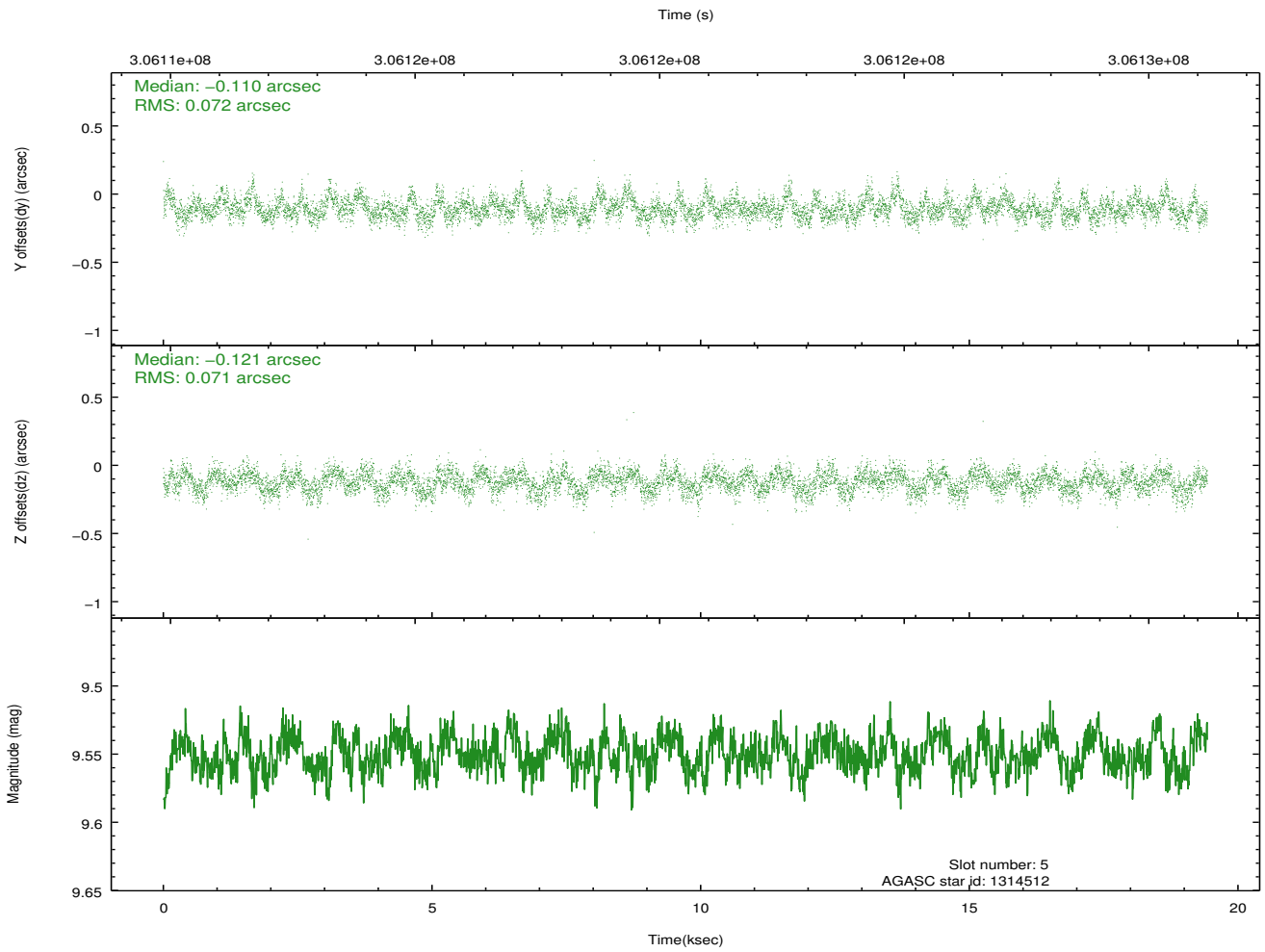
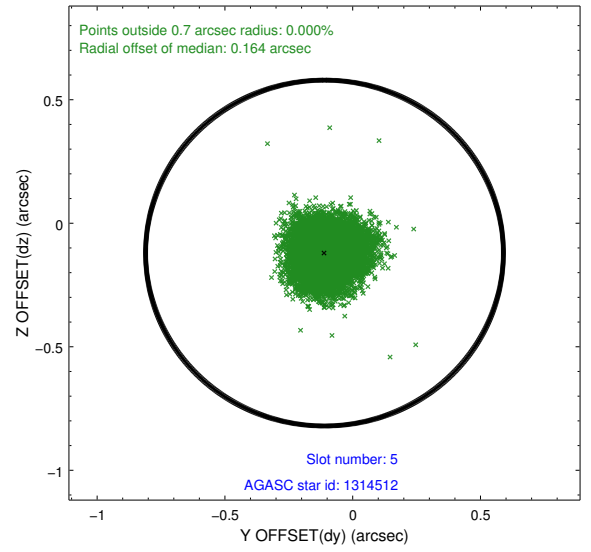
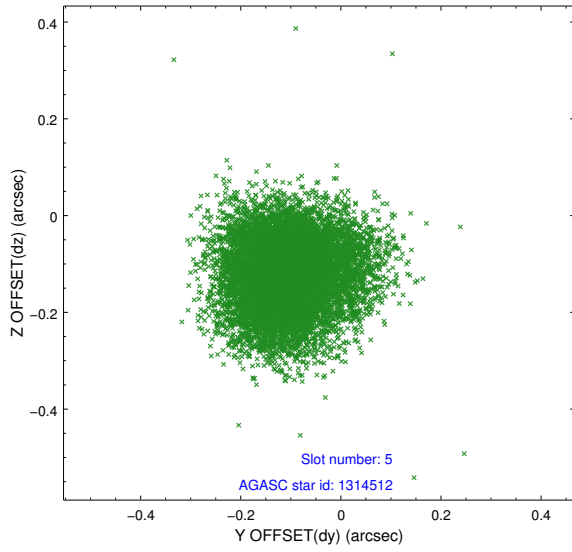
2.4.1 Slot 3



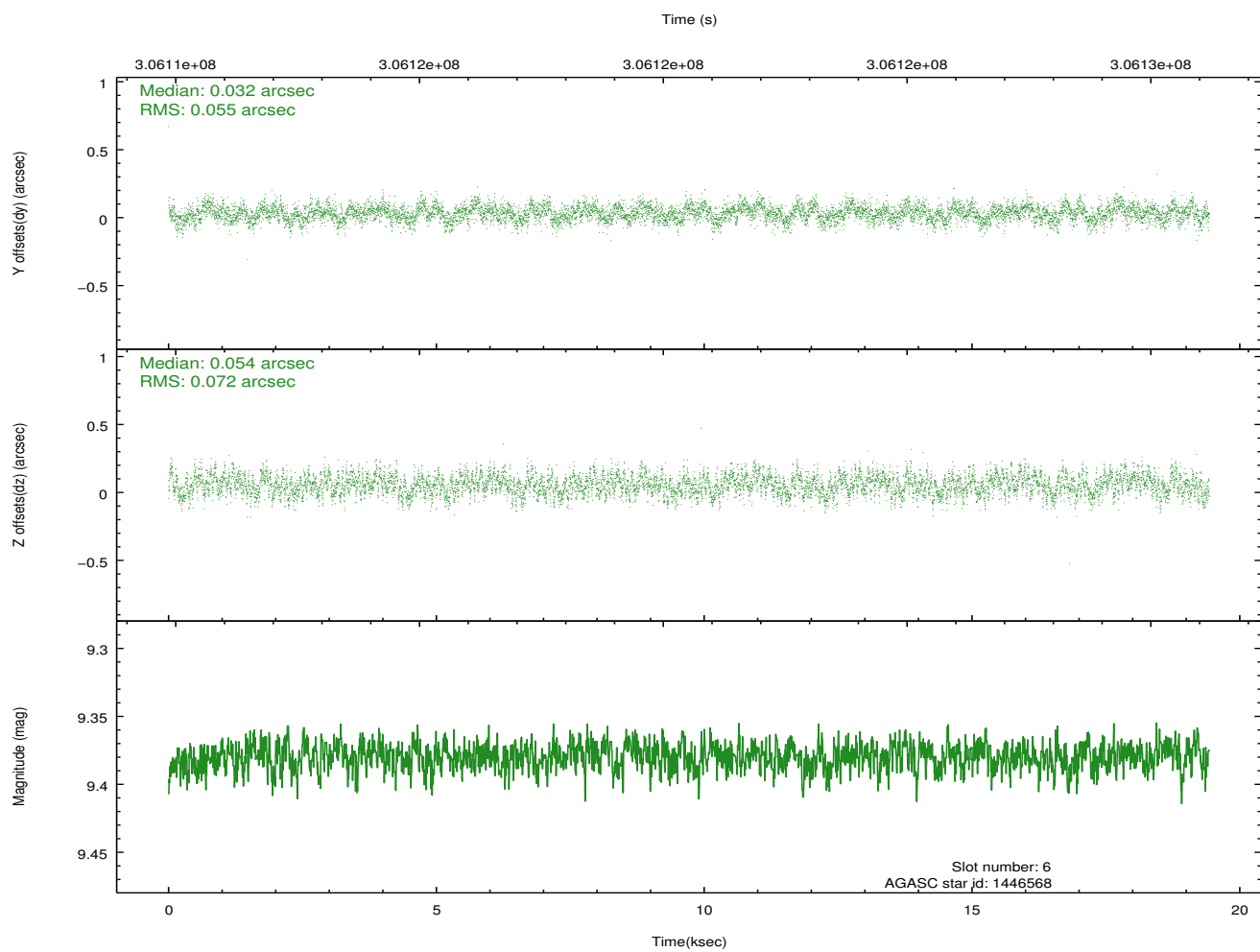
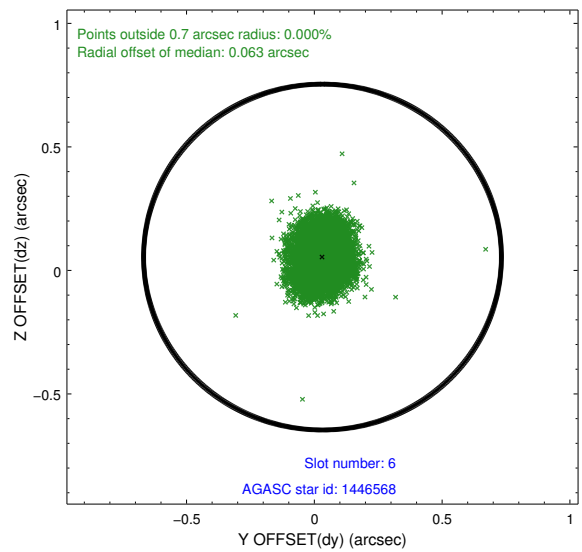
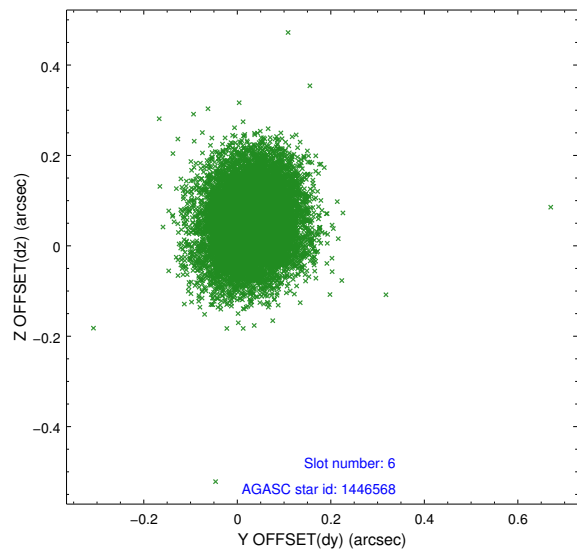
2.4.2 Slot 4



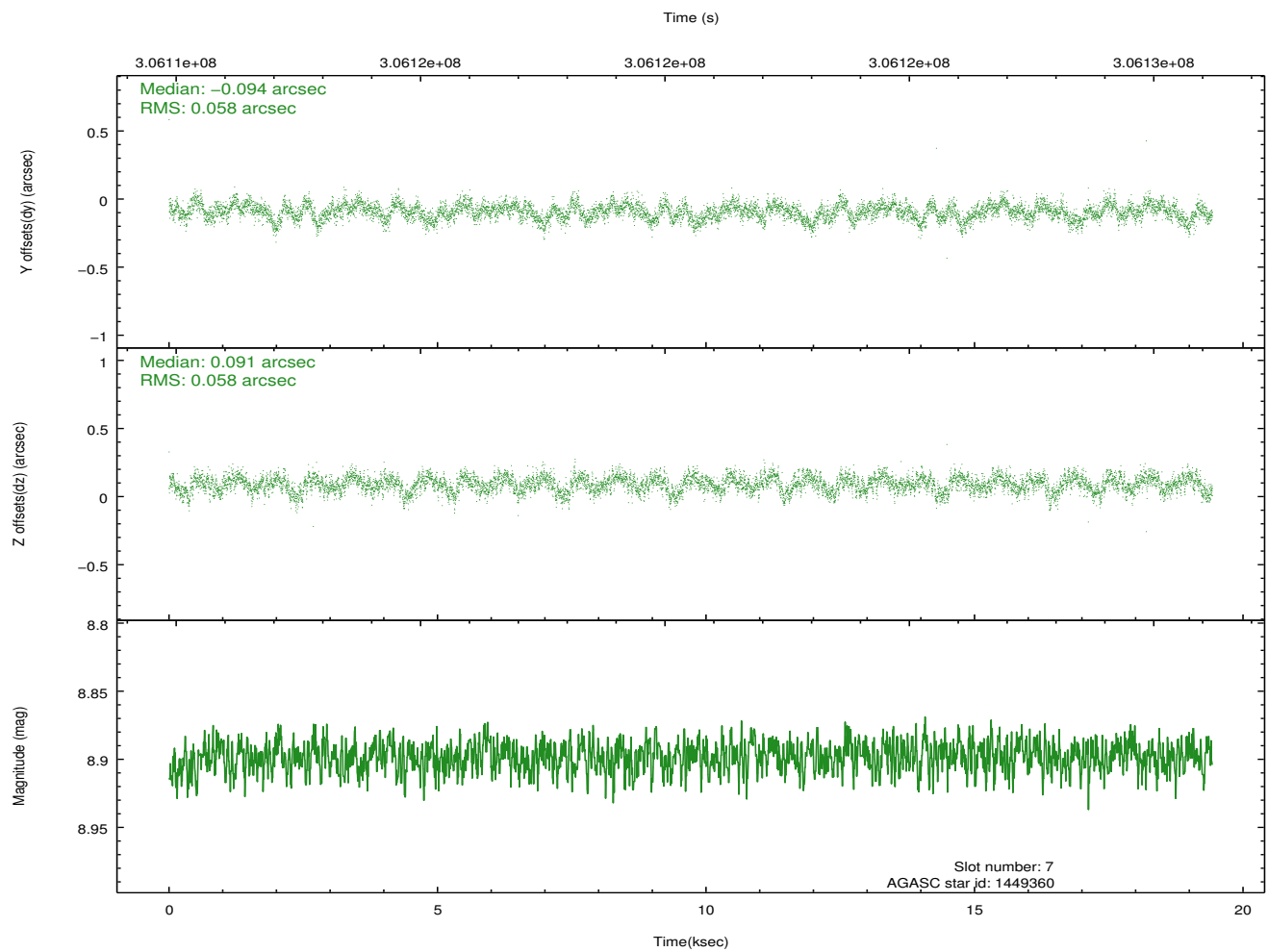
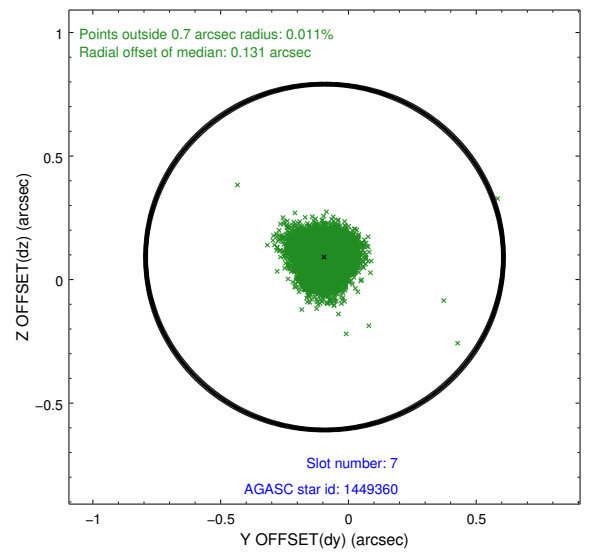
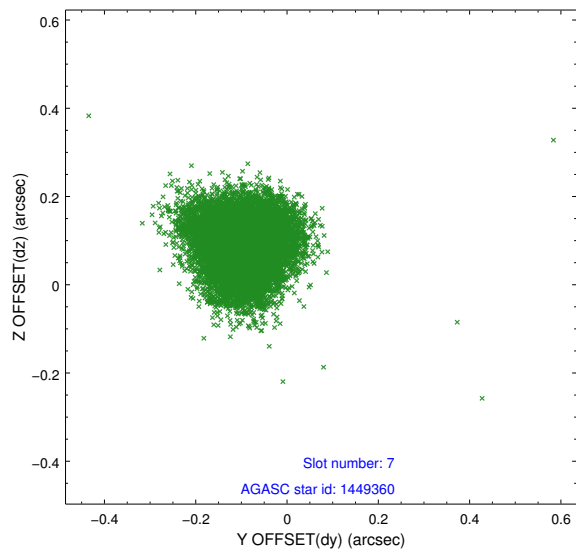
2.4.3 Slot 5



2.4.4 Slot 6

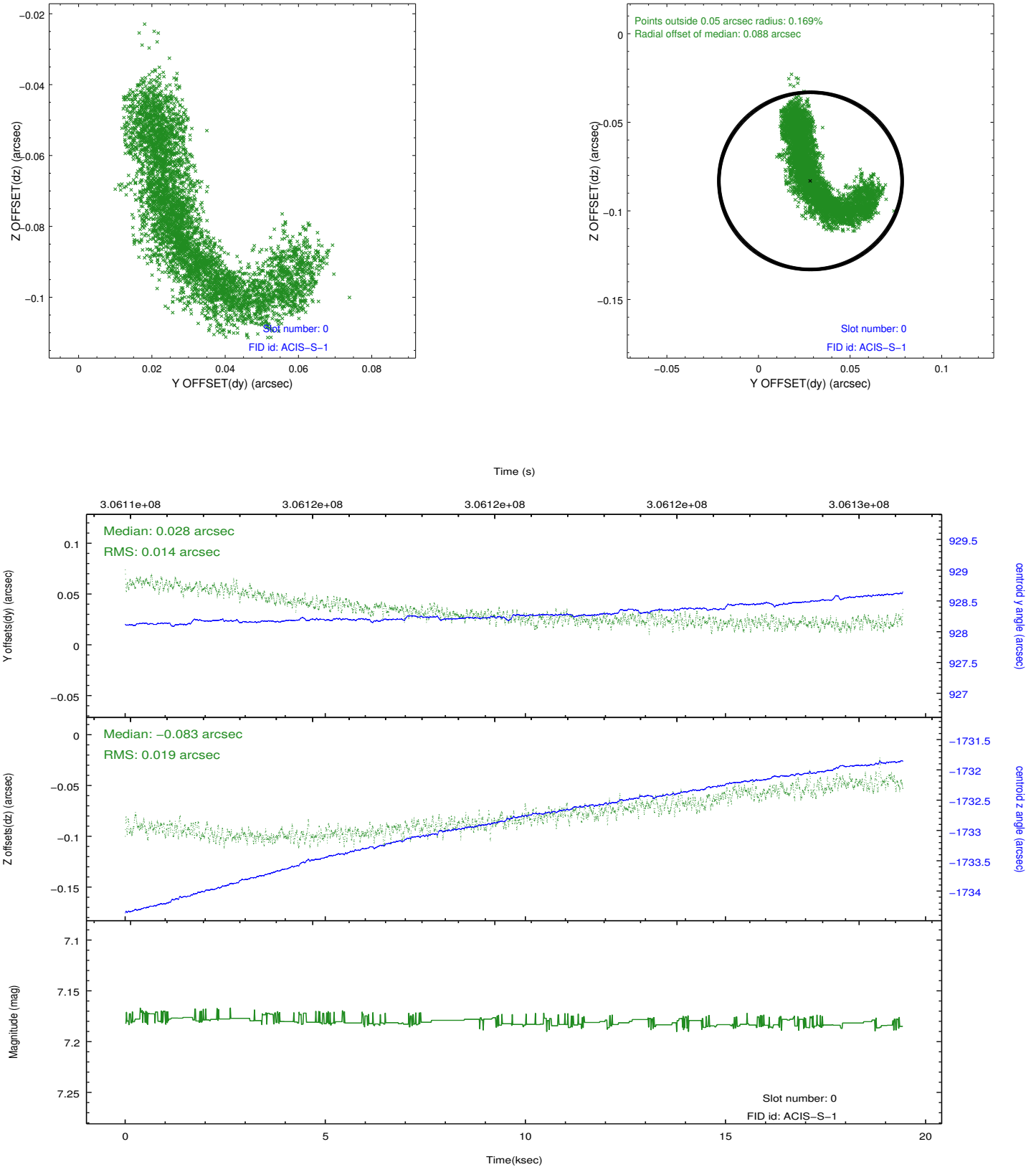


2.4.5 Slot 7

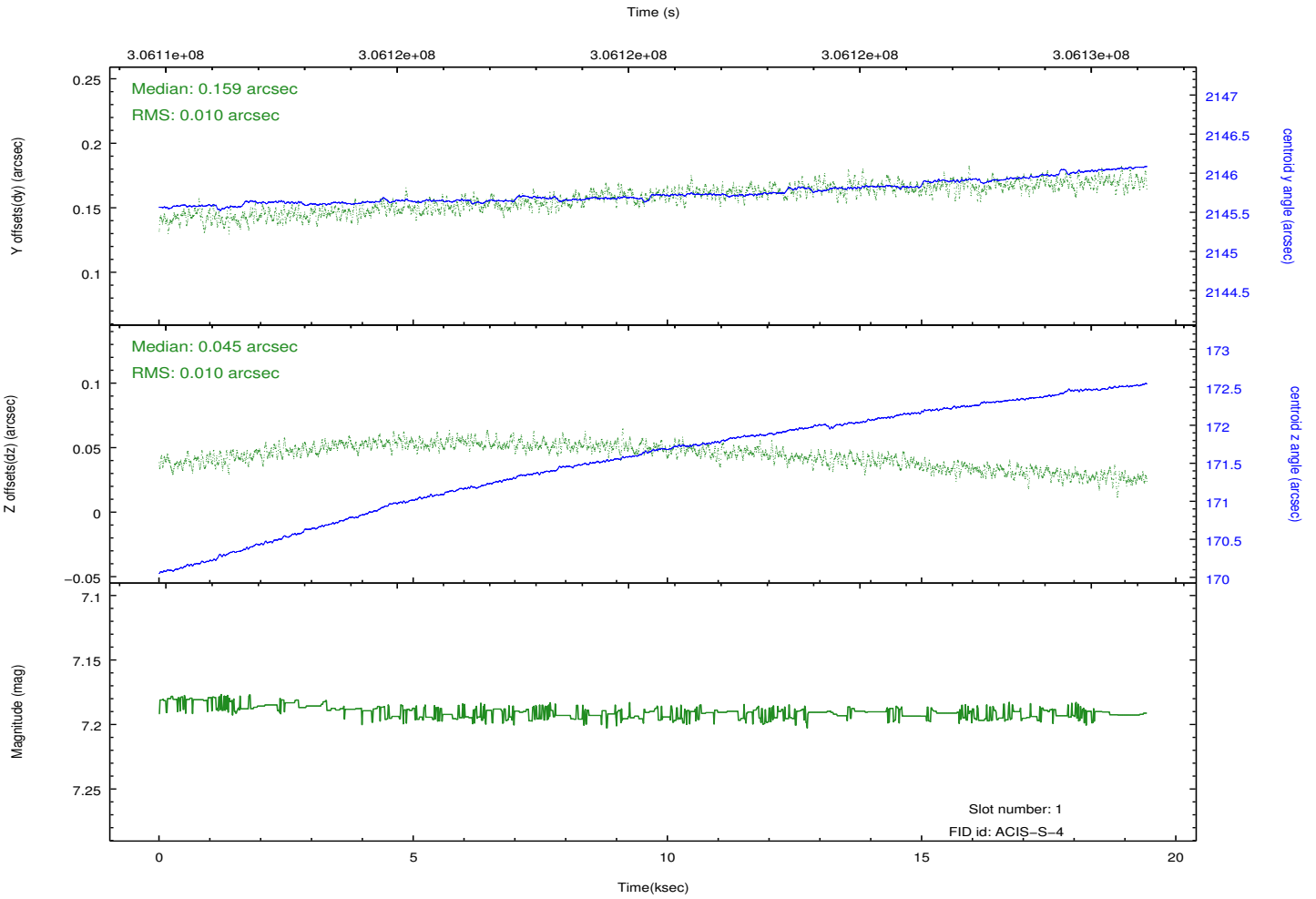
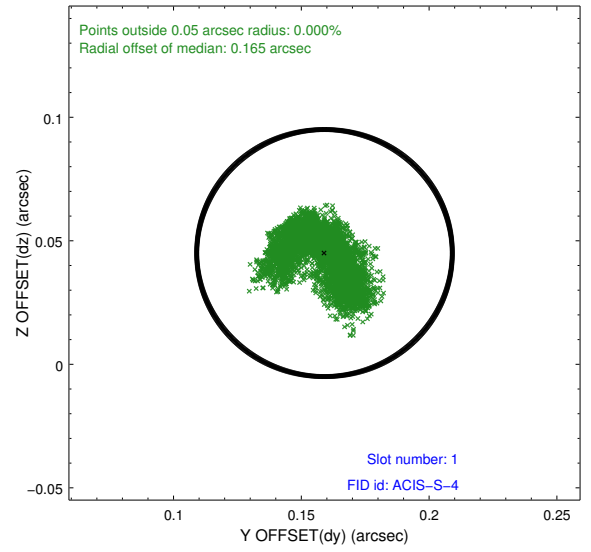
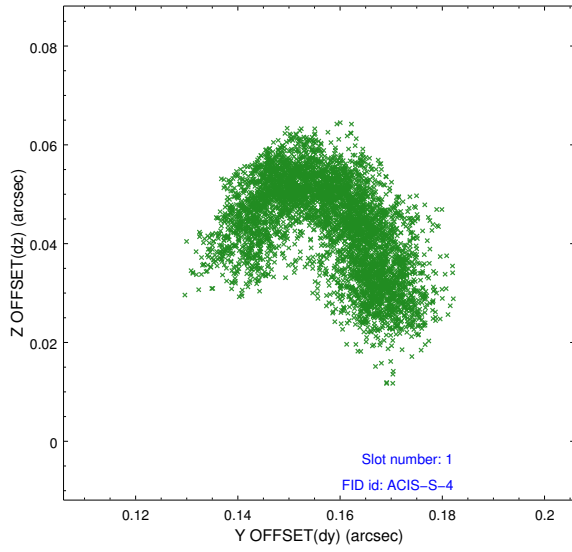


2.5 FID Slots

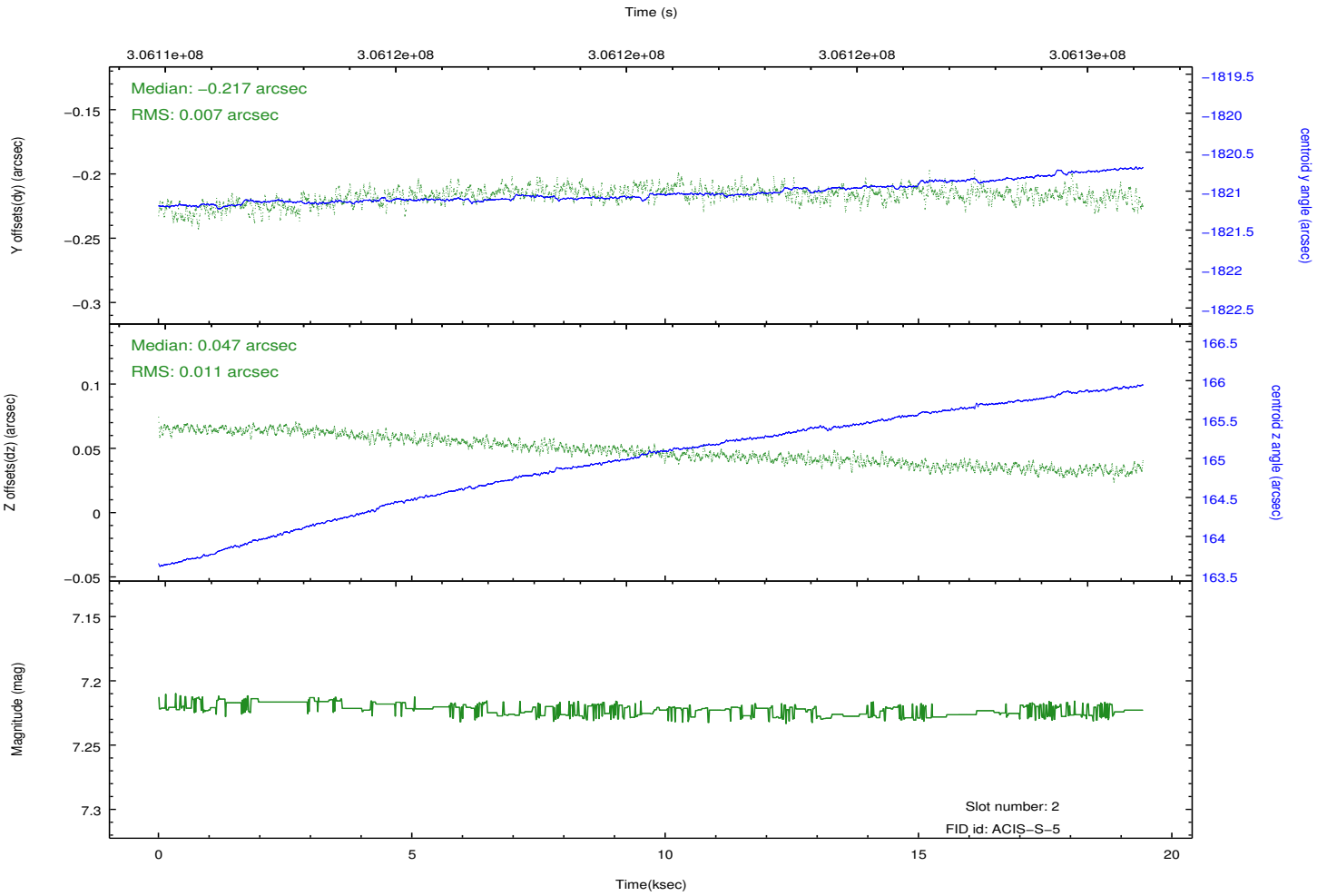
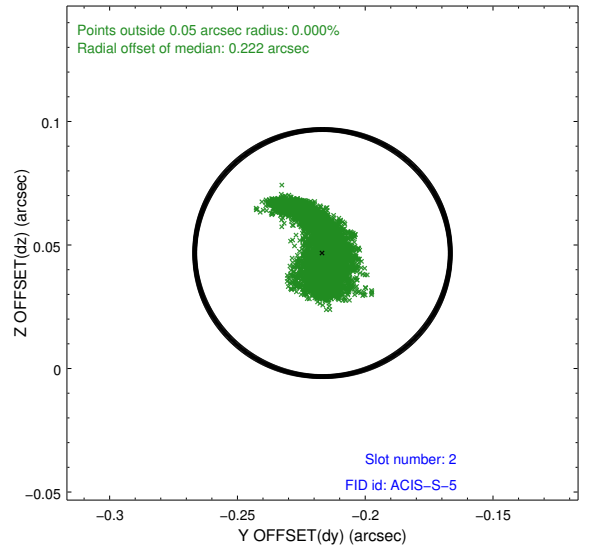
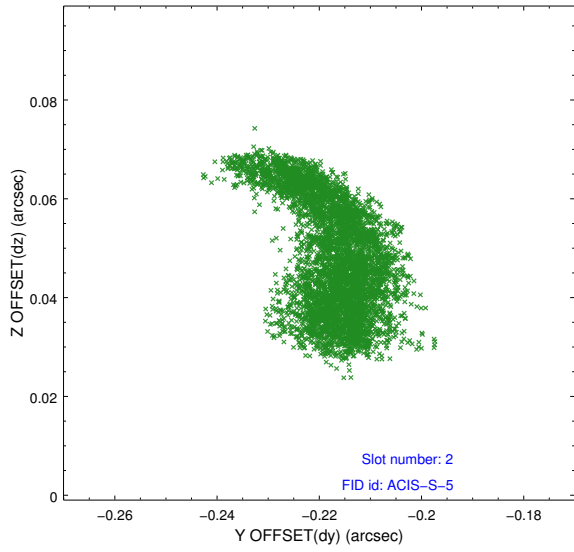
2.5.1 Slot 0



2.5.2 Slot 1



2.5.3 Slot 2



A Summary

A.1 Status

V&V Scientist	Beth Sundheim
V&V Date (YYYY-MM-DD)	2012.05.03
V&V Edition	1
V&V Disposition and Status	OK
V&V Charge Time	19.4215001

A.2 Comments