

V&V Reference Report

L2 ASCDS Version : 8.4.4

Observation 8201 - L2 Version 2
Chandra X-Ray Center

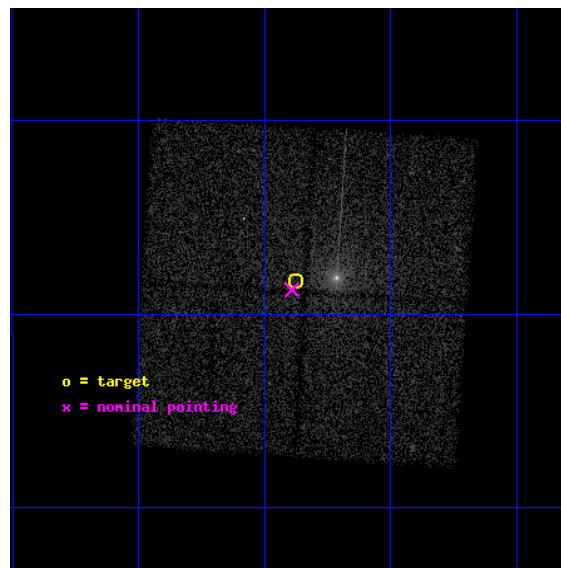
L2 Processing Date : Apr 28 2012

Contents

1	Front	2
2	OBI	3
2.1	OBI	3
2.1.1	Images	3
2.1.2	Bias	3
2.1.3	Parameters	4
2.1.4	Events	4
2.2	Compared Parameters	5
2.3	Aspect	6
2.4	Star Slots	9
2.4.1	Slot 3	9
2.4.2	Slot 4	10
2.4.3	Slot 5	11
2.4.4	Slot 6	12
2.4.5	Slot 7	13
2.5	FID Slots	14
2.5.1	Slot 0	14
2.5.2	Slot 1	15
2.5.3	Slot 2	16
A	Summary	17
A.1	Status	17
A.2	Comments	17

1 Front

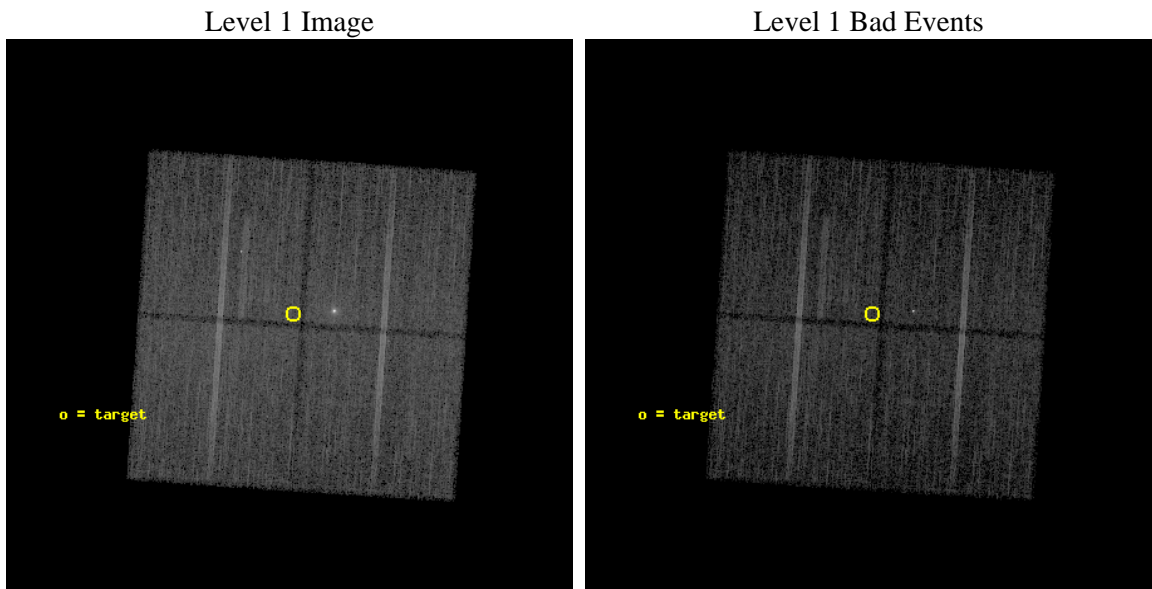
seq_num	600637	Sequence number
obs_id	8201	Observation id
title	Galactic Bulge Latitude Survey-2	Proposal title
observer	Professor Johnathan Grindlay	Principal investigator
object	GBW21	Source name
dtcycle	0	
cycle	P	events from which exps? Prim/Second/Both
ra_targ	265.219583	Observer's specified target RA [deg]
dec_targ	-28.304972	Observer's specified target Dec [deg]
ra_nom	265.22289626939	Nominal RA [deg]
dec_nom	-28.312496247707	Nominal Dec [deg]
roll_nom	273.81025733279	Nominal Roll [deg]
revision	2	Processing version of data
ontime	14489.400111437	Sum of GTIs [s]
livetime	14300.08543204	Livetime [s]
ontime0	14486.259141088	Sum of GTIs [s]
ontime1	14489.400111437	Sum of GTIs [s]
ontime2	14489.400111437	Sum of GTIs [s]
ontime3	14489.400111437	Sum of GTIs [s]
l2events	52559	Number of level 2 events



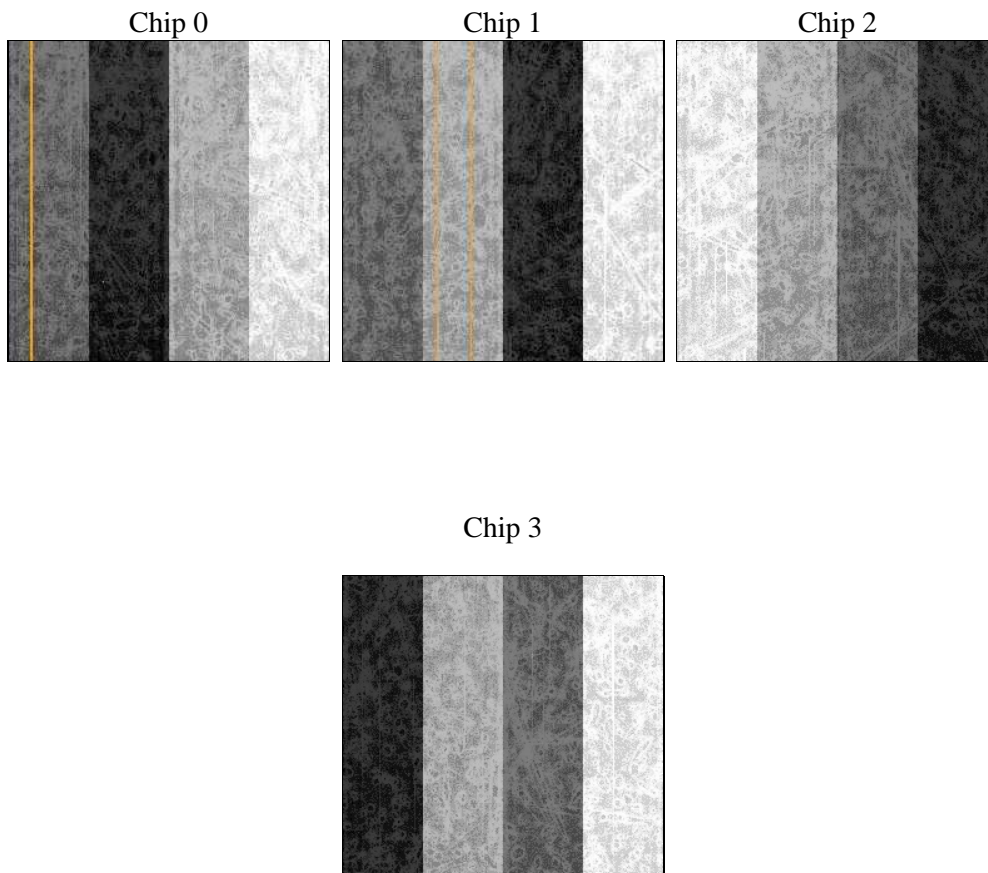
2 OBI

2.1 OBI

2.1.1 Images



2.1.2 Bias



2.1.3 Parameters

obi_num	0	Obi number	sched_exp_time	14700.000000	[s] Scheduled observation exposure time
ascdsver	8.4.4	Processing system revision	ontime	14489.400111437	Sum of GTIs [s]
caldsver	4.4.9	 	ontime0	14486.259141088	Sum of GTIs [s]
date	2012-04-28T16:20:37	Date and time of file creation	ontime1	14489.400111437	Sum of GTIs [s]
revision	2	Processing version of data	ontime2	14489.400111437	Sum of GTIs [s]
			ontime3	14489.400111437	Sum of GTIs [s]
			l1events	446928	Number of level 1 events

2.1.4 Events

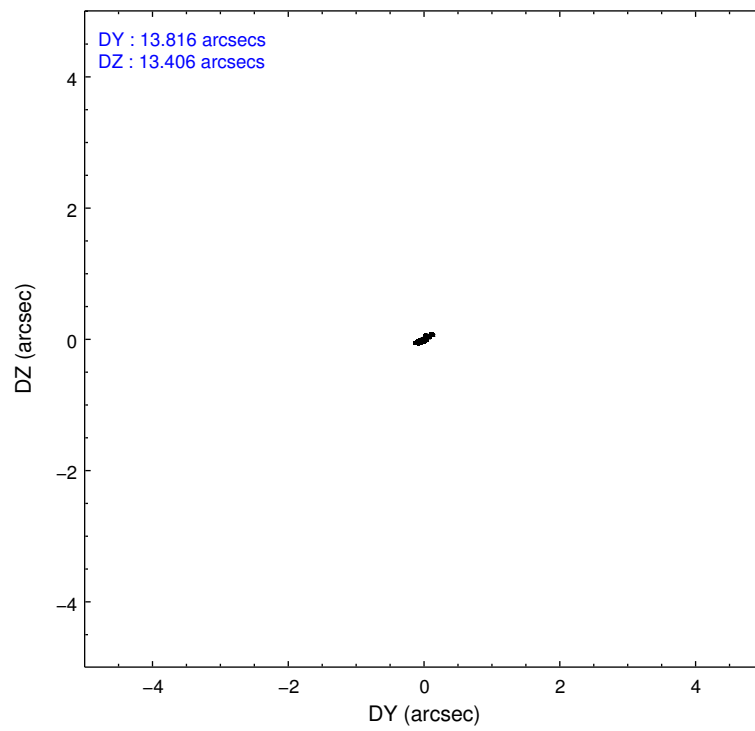
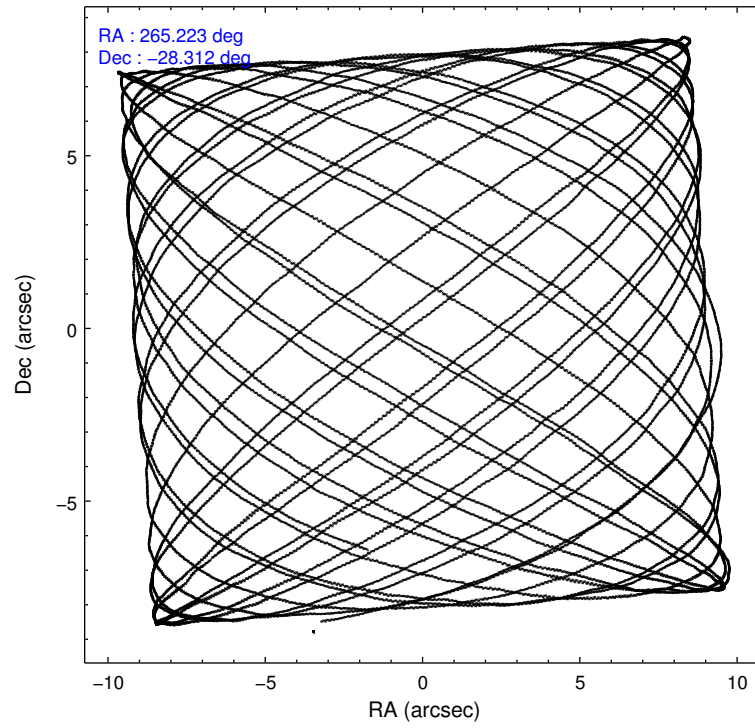
	ccd 0	ccd 1	ccd 2	ccd 3
level 1 events	104856	112625	119004	110443
rejected events	91187	90674	105894	97352
rejected %	86%	80%	88%	88%

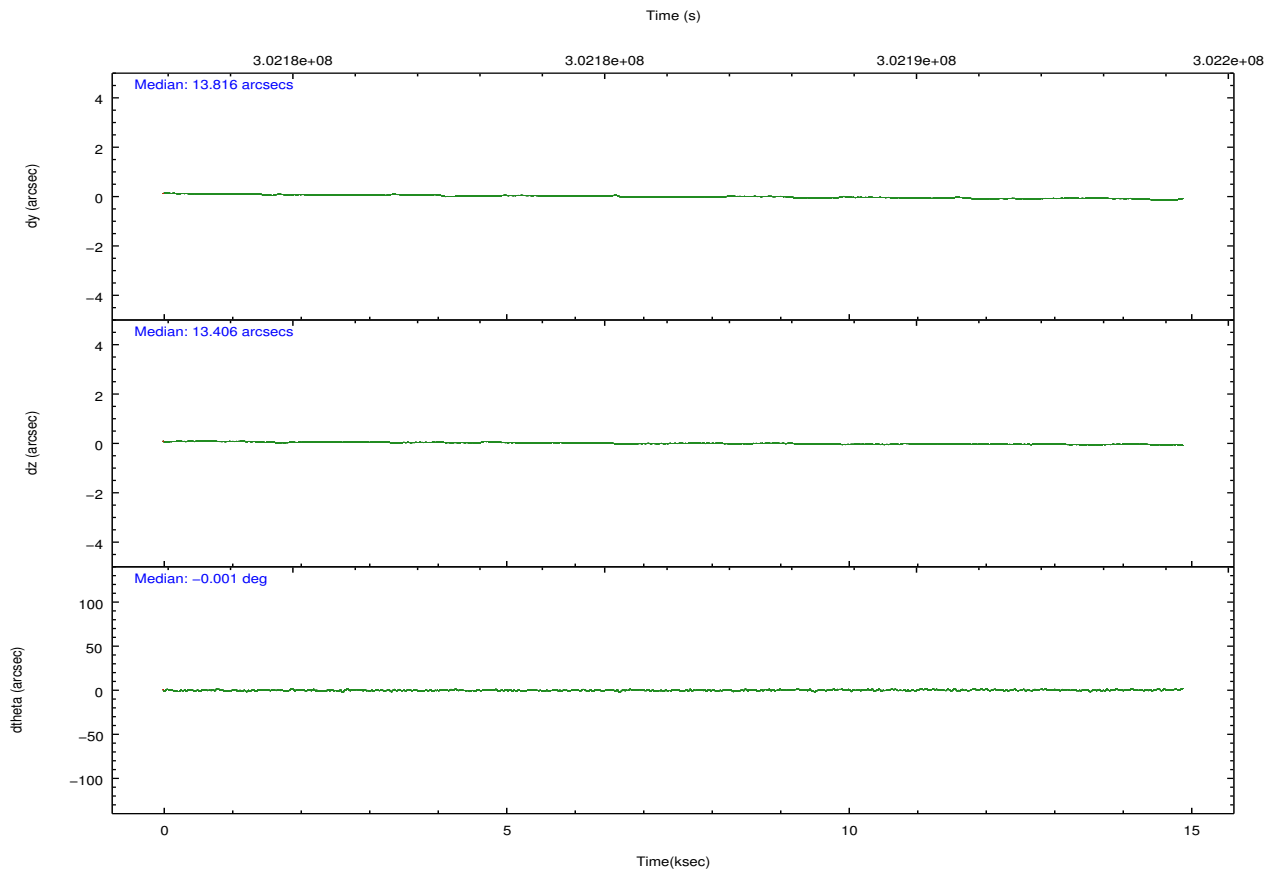
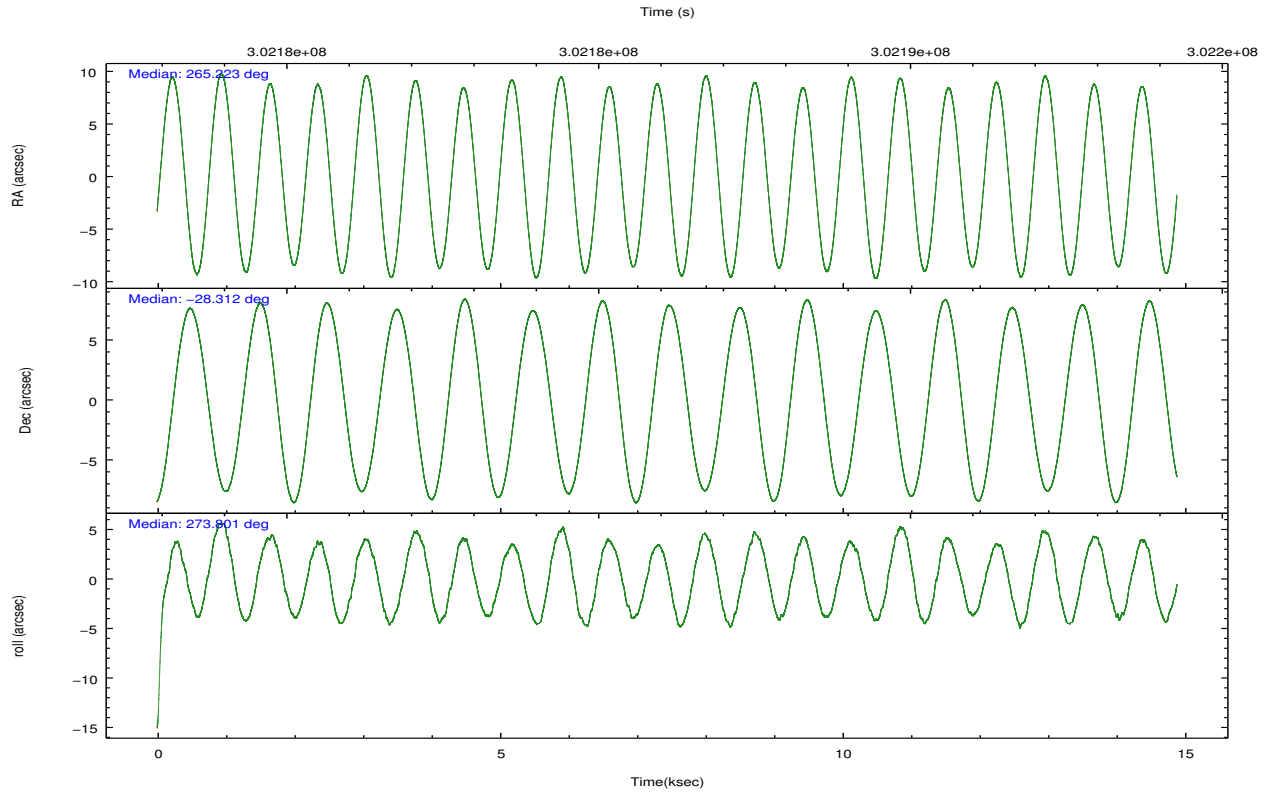
	ccd 0	ccd 1	ccd 2	ccd 3
grade 0 events	6261	11047	5962	6186
	5%	9%	5%	5%
grade 1 events	59	630	67	85
	0%	0%	0%	0%
grade 2 events	2856	4024	2873	2411
	2%	3%	2%	2%
grade 3 events	1210	1864	1183	1225
	1%	1%	0%	1%
grade 4 events	1223	1921	1241	1213
	1%	1%	1%	1%
grade 5 events	3238	4449	3009	3916
	3%	3%	2%	3%
grade 6 events	2127	3108	1857	2060
	2%	2%	1%	1%
grade 7 events	87882	85582	102812	93347
	83%	75%	86%	84%

2.2 Compared Parameters

Parameter	Planned	Actual	Parameter	Planned	Actual
Instrument	ACIS	ACIS	Obspar format version number	7	7
Detector	ACIS-0123	ACIS-0123	Obspar file type	PREDICTED	ACTUAL
Grating	NONE	NONE	Obspar update status	NONE	UPDATED
Data mode	VFAINT	VFAINT	Number of optional ACIS chips dropped	0	0
Observation mode	POINTING	POINTING	On-chip summing requested	N	N
[deg] Pointing RA	265.205411	265.2228962693893	Subarray requested	NONE	NONE
[deg] Pointing Dec	-28.289725	-28.31249624770671	Alternating exposures requested	N	N
[deg] Pointing Roll	273.593286	273.8102573327939	[s] Primary exposure time	0.000000	3.1
[mm] SIM focus pos	-0.782348	-0.7809083437167272			
[mm] SIM defocus	0	0.001439871863259334			
[mm] SIM translation stage pos	-233.592463	-233.5874344608287			
[mm] SIM translation stage offset	0	-0.005018542100998502			
[s] Observation start time (MET)	302178828.184000	302178453.20918			
Observation start date	2007-07-30T10:32:43	2007-07-30T10:27:33			
[s] Observation end time (MET)	302193528.184000	302193662.67241			
Observation end date	2007-07-30T14:37:43	2007-07-30T14:41:02			
Read mode	TIMED	TIMED			

2.3 Aspect



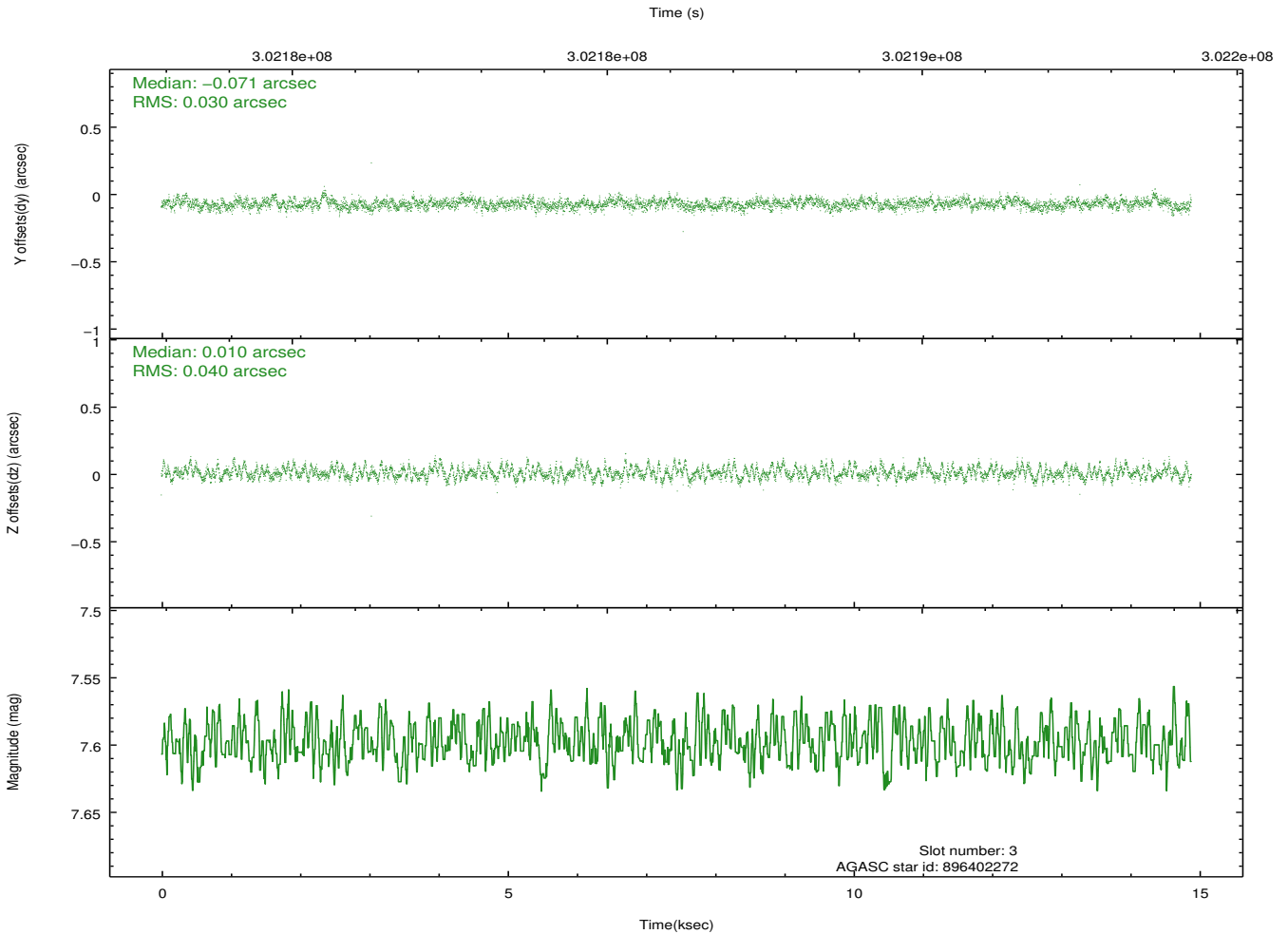
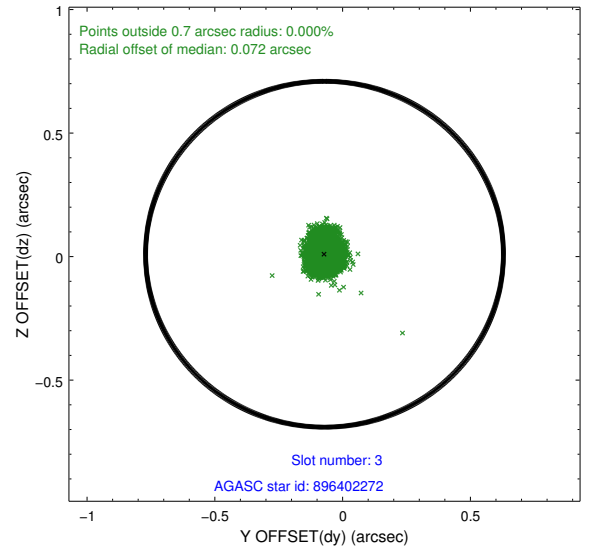
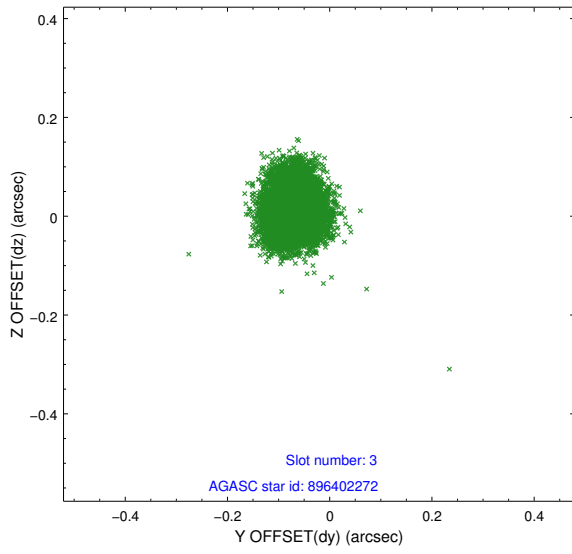


Slot Statistics

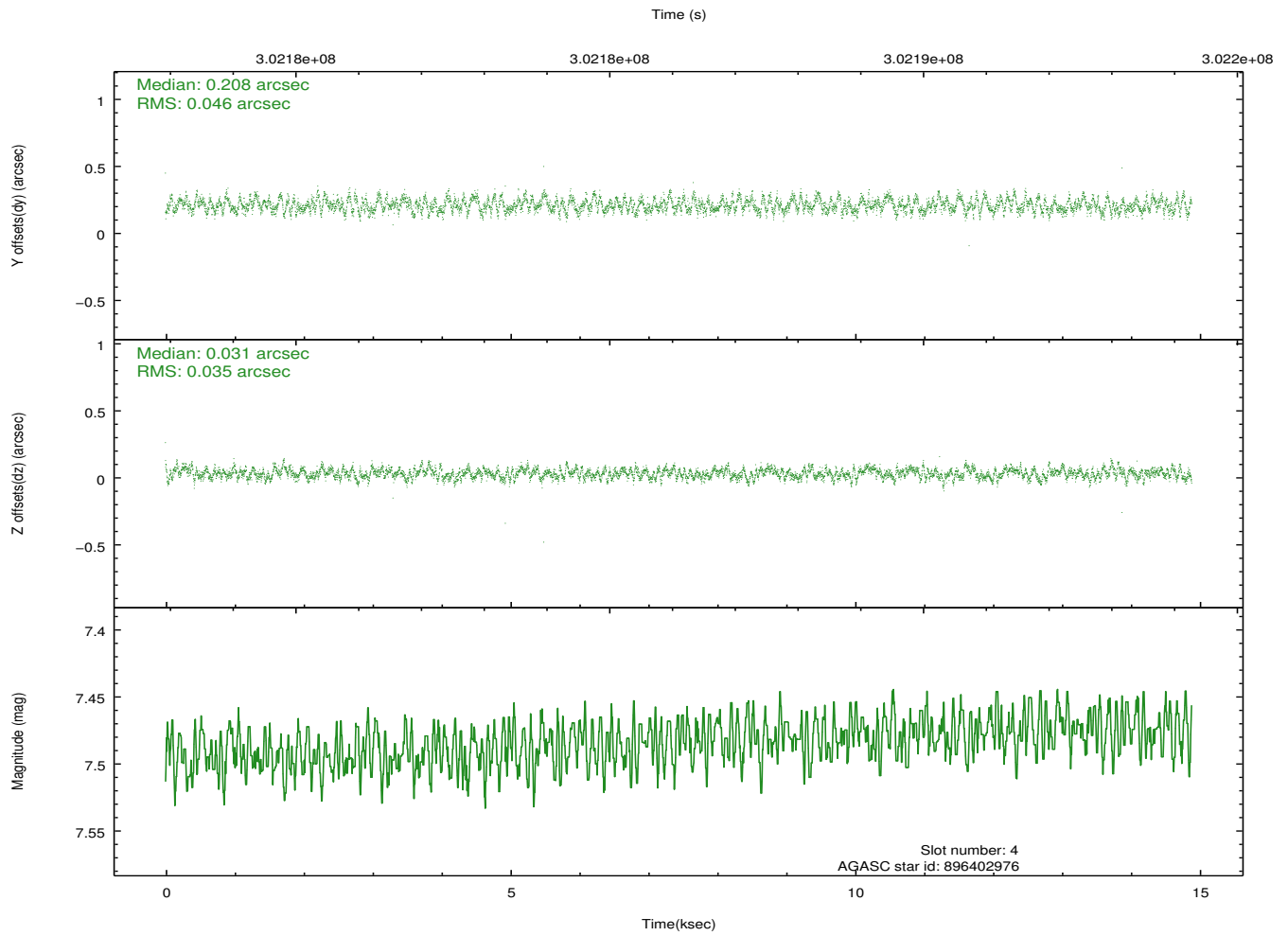
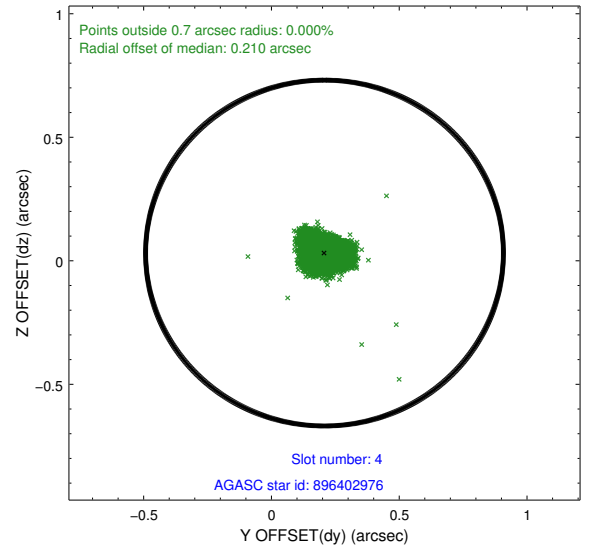
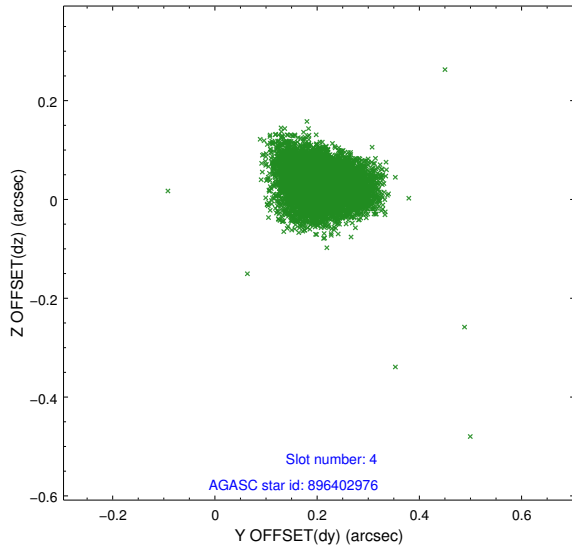
slot	status	id	mag	n_pts	med_dy	med_dz	dr1	dr2	ra	dec	mean_y	mean_z
0	FID	ACIS-I-1	7.24	3631	-0.001	0.026	0.009	0.016	0.000000	0.000000	925.67	-836.95
1	FID	ACIS-I-4	7.15	3630	0.210	0.006	0.008	0.014	0.000000	0.000000	2146.12	1062.66
2	FID	ACIS-I-5	7.22	3632	-0.307	0.039	0.007	0.014	0.000000	0.000000	-1822.22	1060.95
3	GUIDE	896402272	7.60	7259	-0.071	0.010	0.053	0.086	265.637294	-28.313189	172.63	1360.72
4	GUIDE	896402976	7.48	7263	0.208	0.031	0.061	0.098	265.099474	-28.923203	2255.95	-475.50
5	GUIDE	896404568	7.85	7262	-0.027	-0.005	0.058	0.090	265.687293	-28.431080	606.97	1490.53
6	GUIDE	896405048	8.28	7259	-0.110	0.037	0.060	0.100	264.482575	-28.152230	-630.30	-2259.07
7	GUIDE	896406568	8.25	7256	-0.003	-0.069	0.081	0.125	264.435951	-28.437282	385.93	-2465.08

2.4 Star Slots

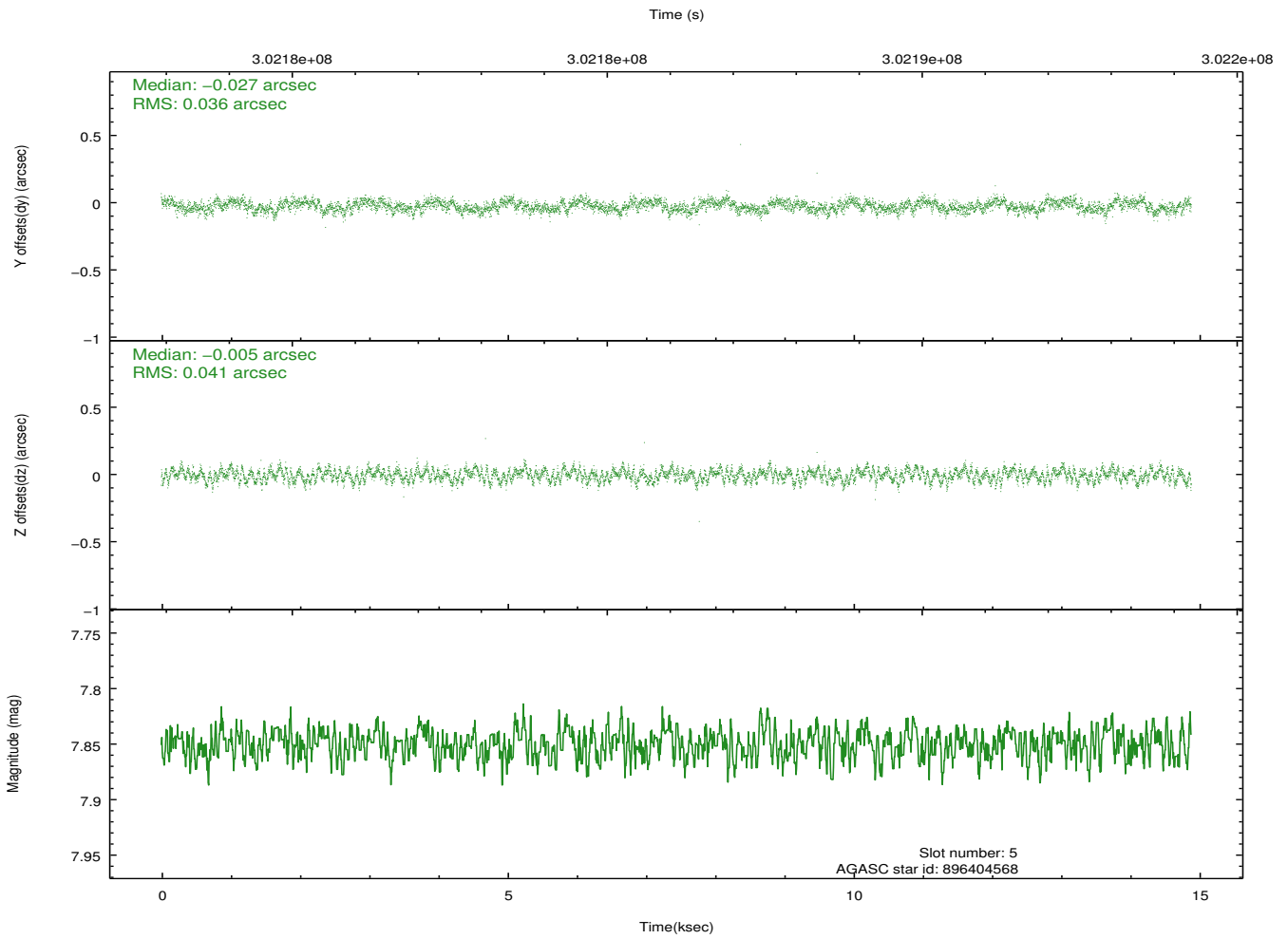
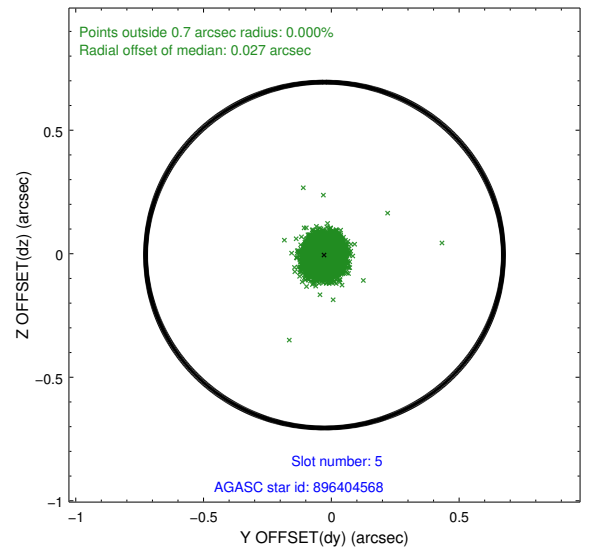
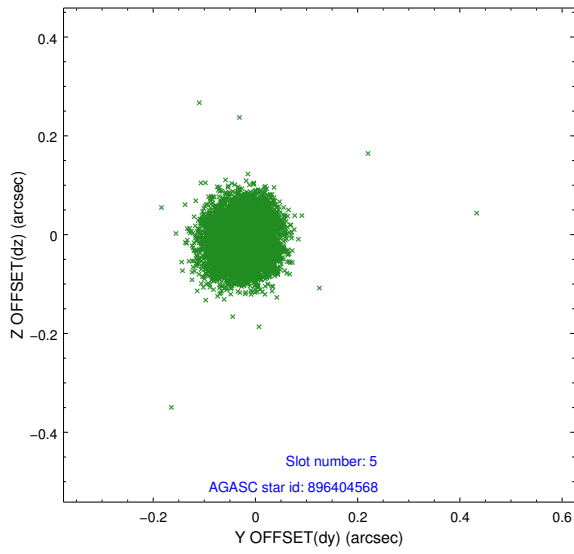
2.4.1 Slot 3



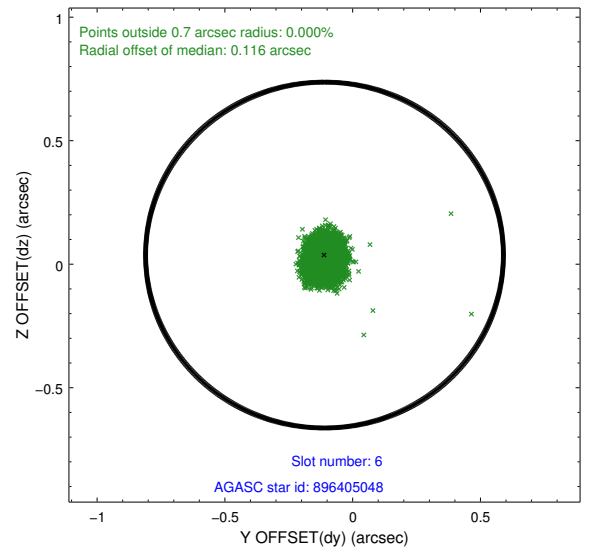
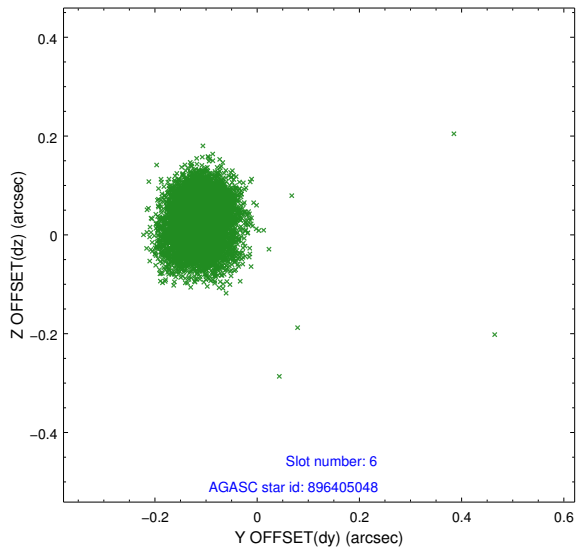
2.4.2 Slot 4



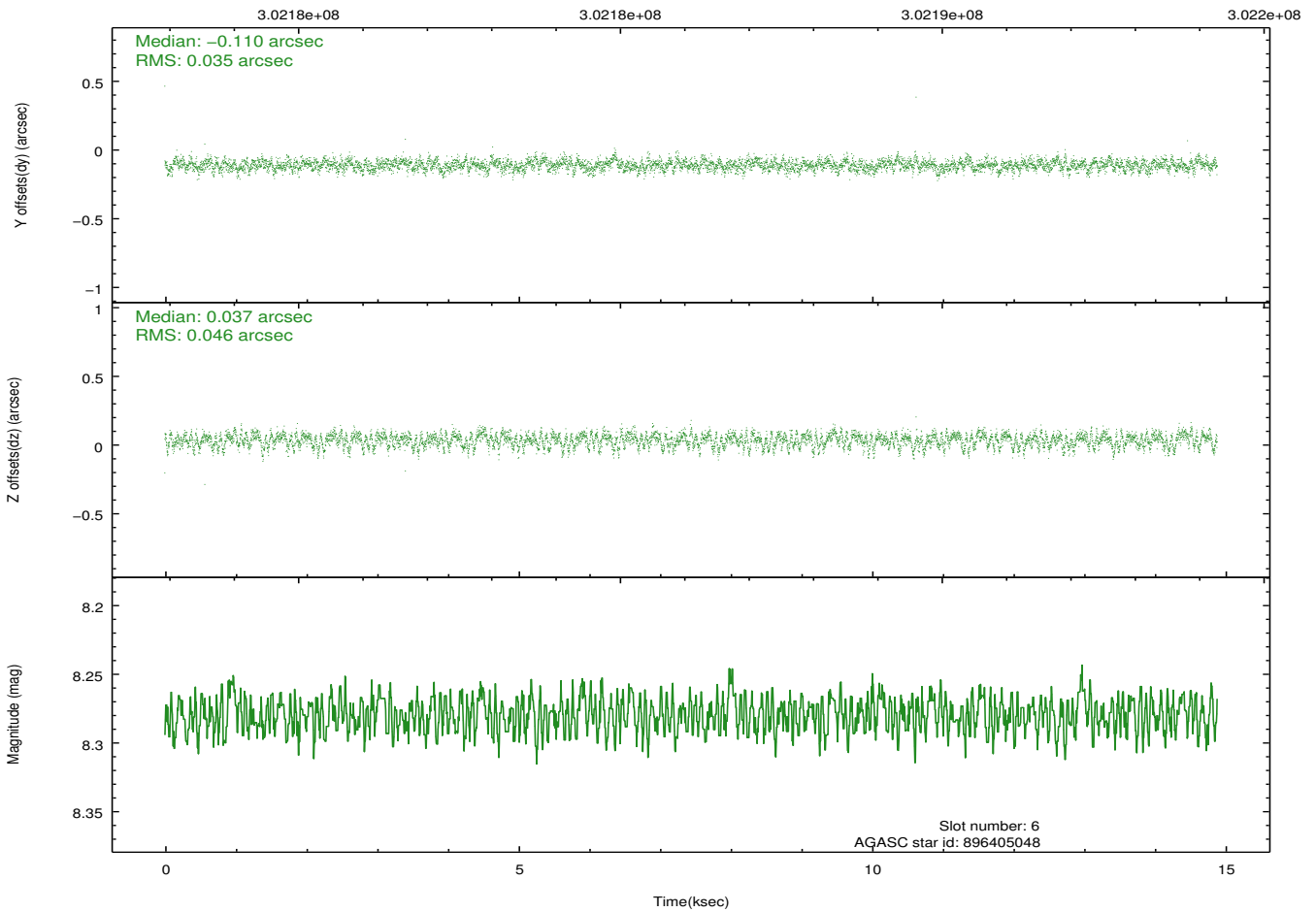
2.4.3 Slot 5



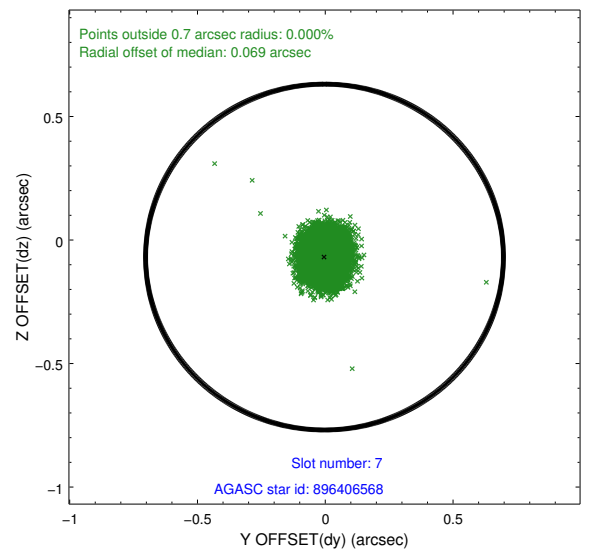
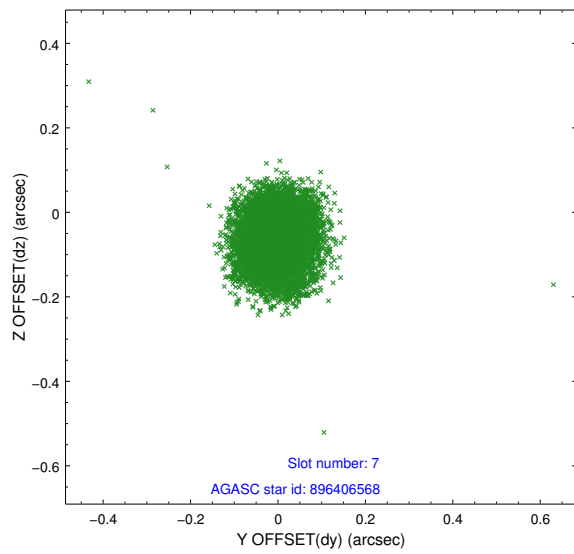
2.4.4 Slot 6



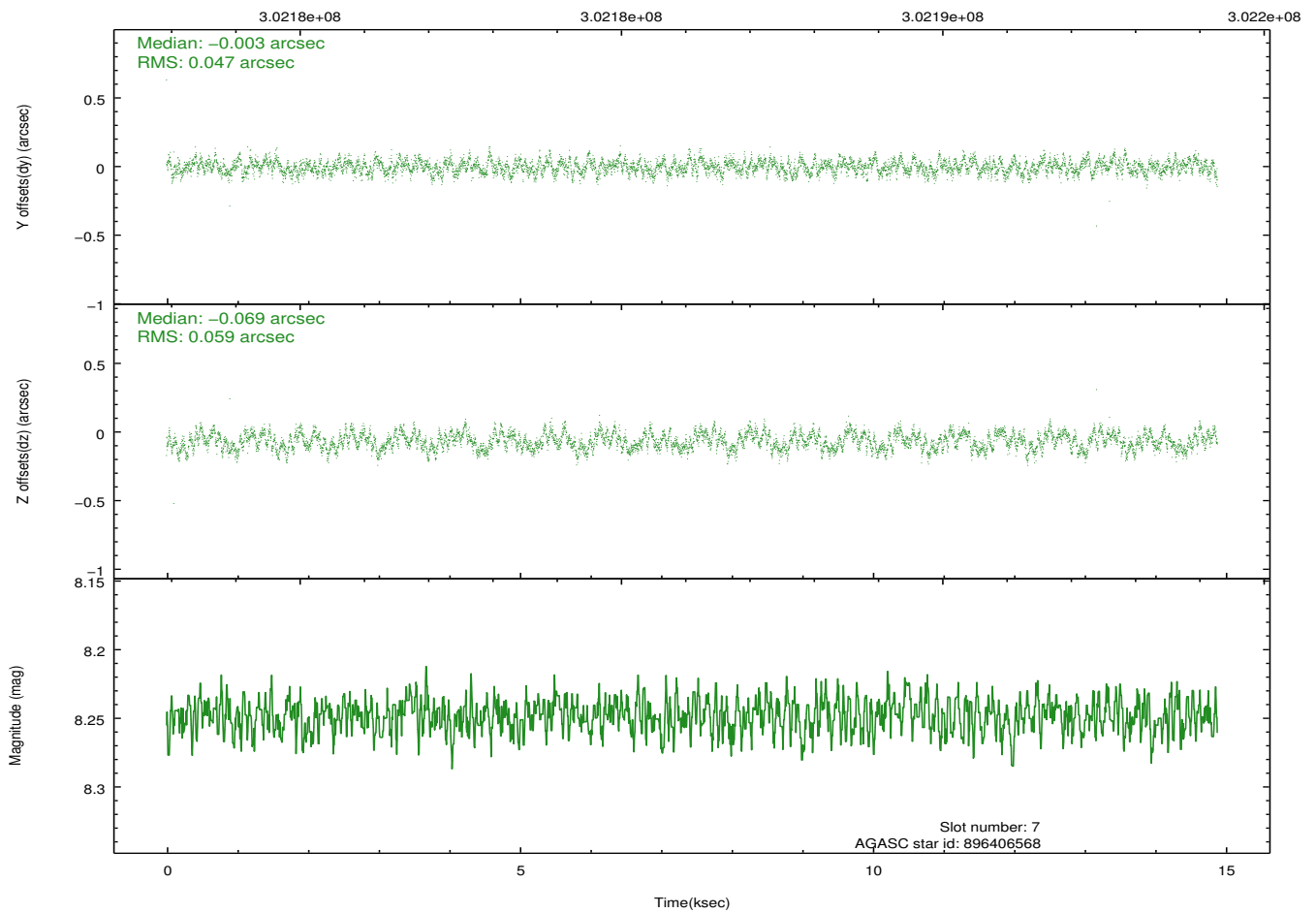
Time (s)



2.4.5 Slot 7

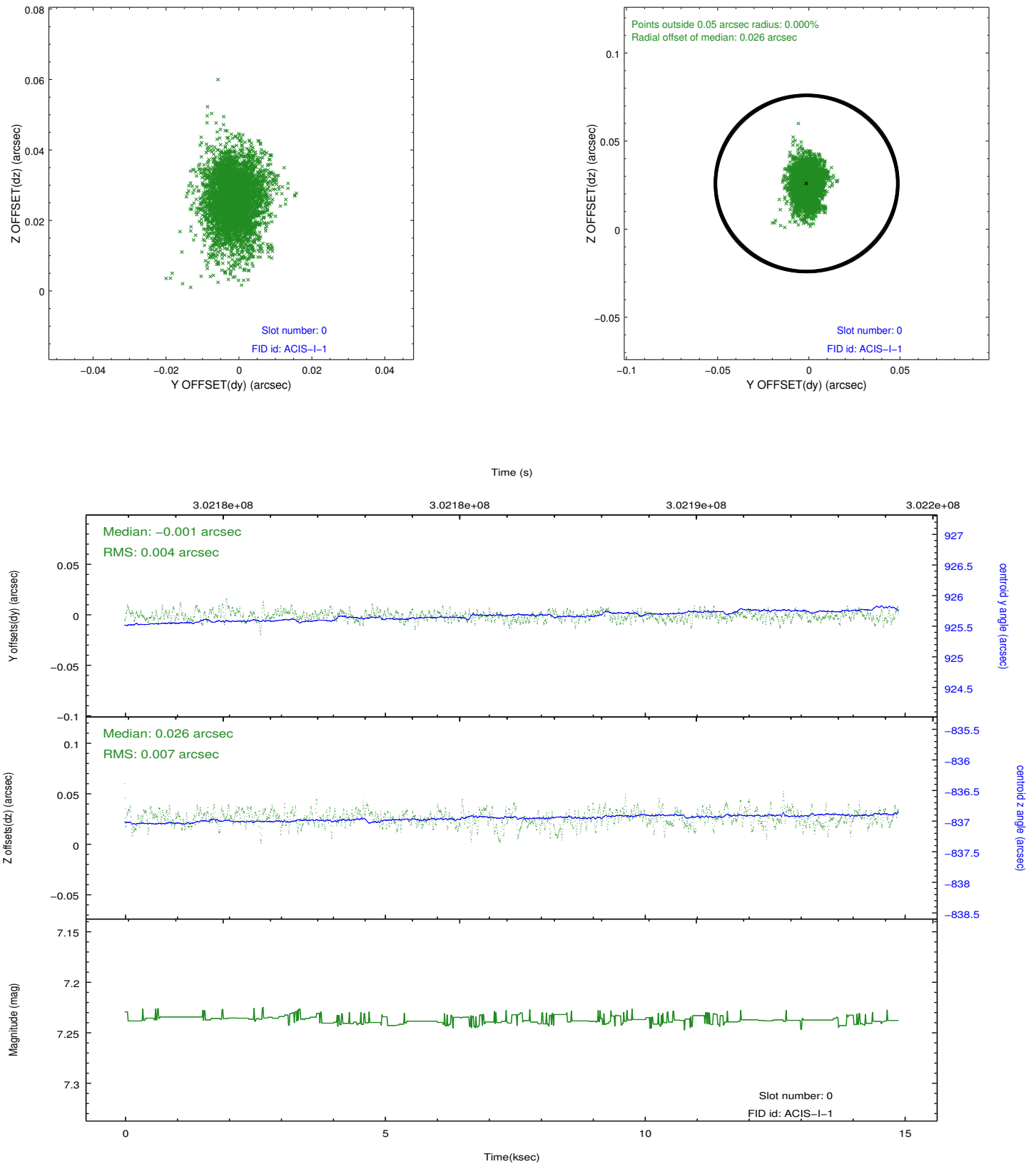


Time (s)

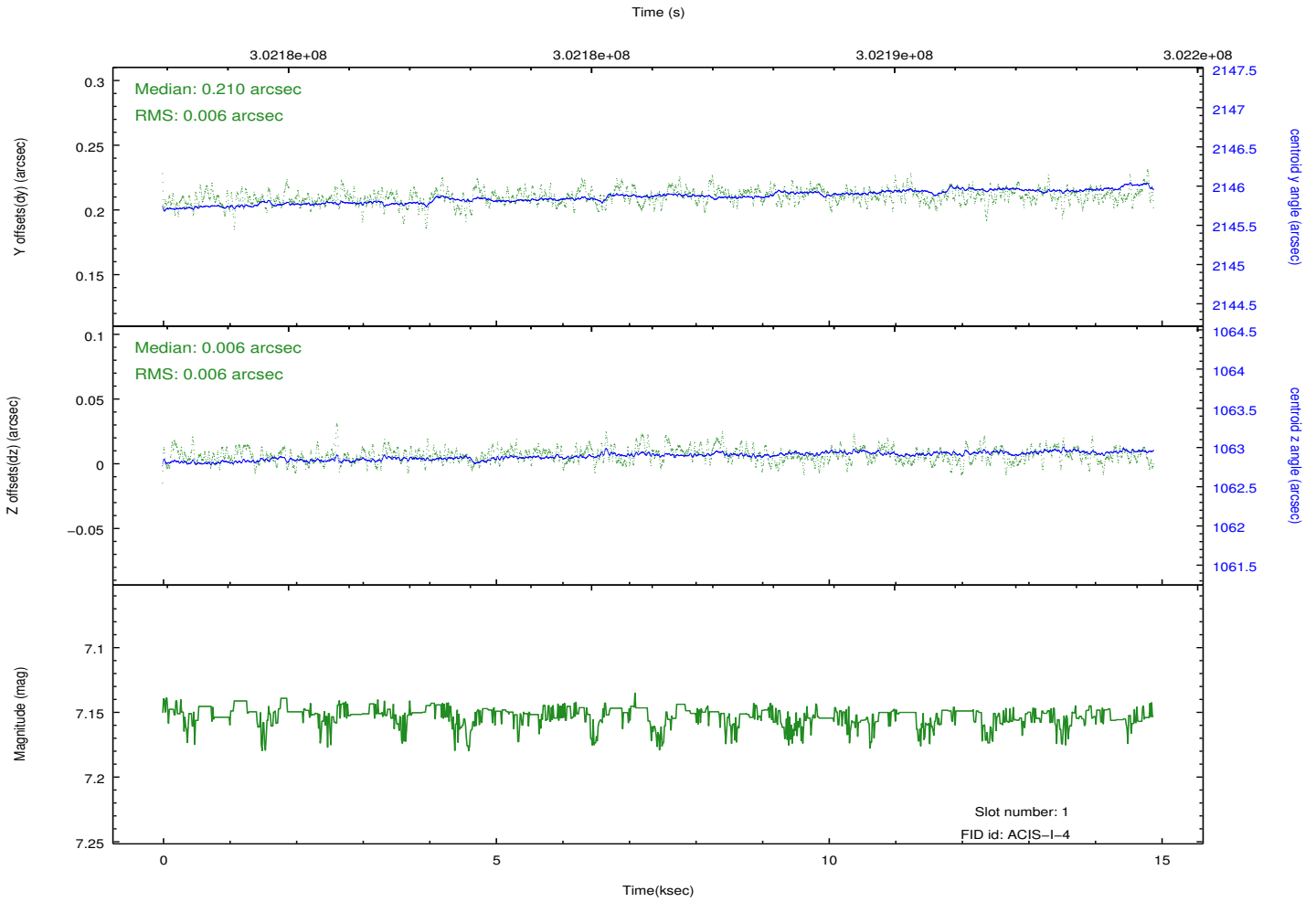
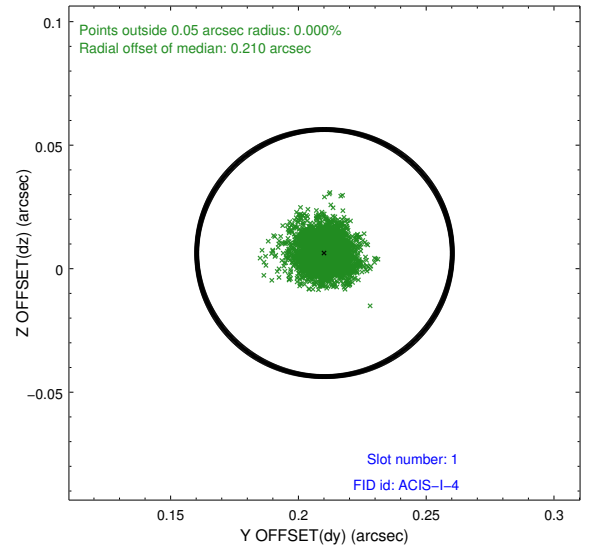
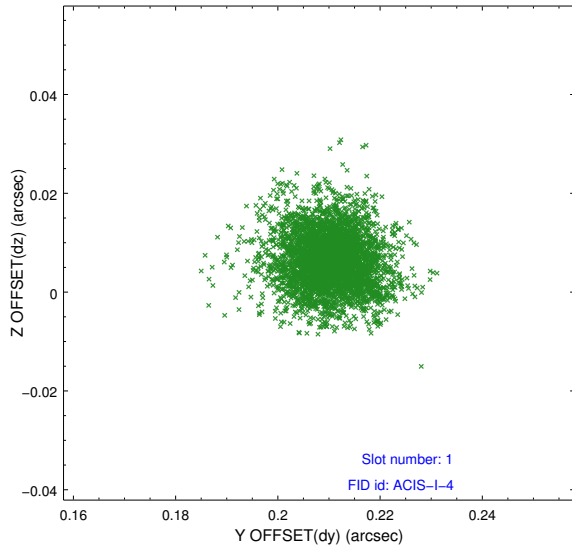


2.5 FID Slots

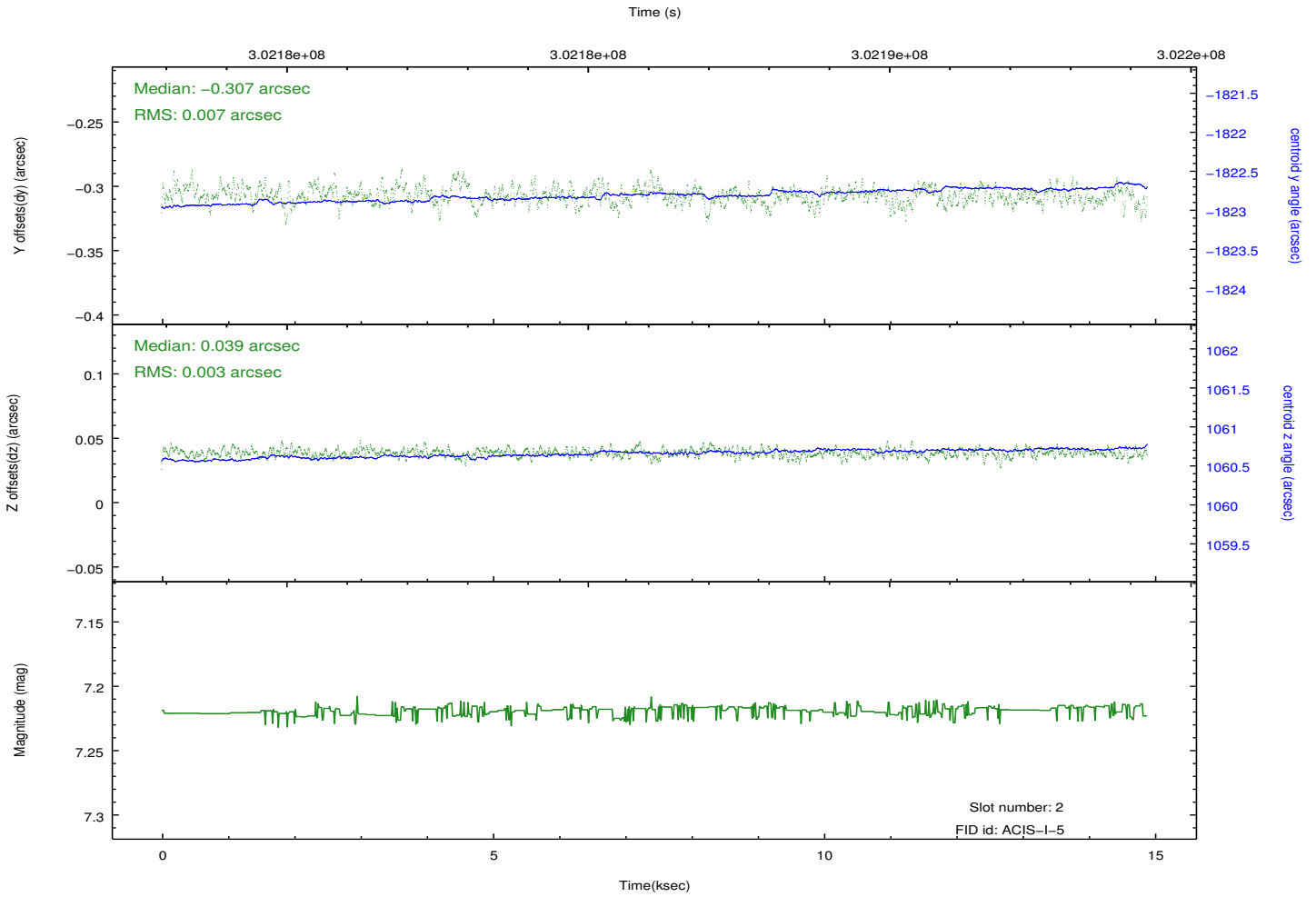
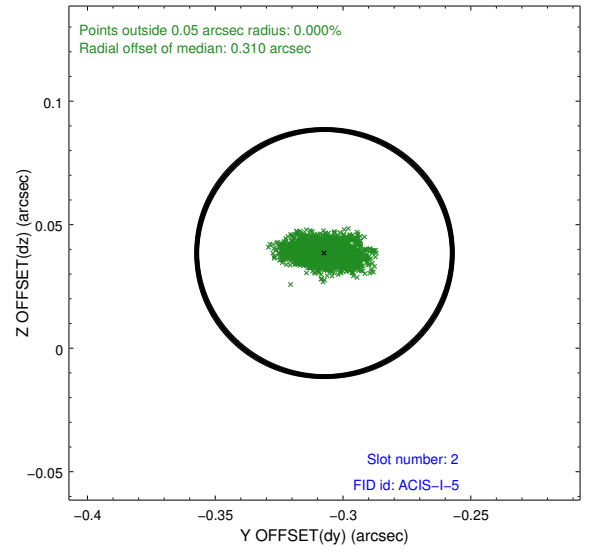
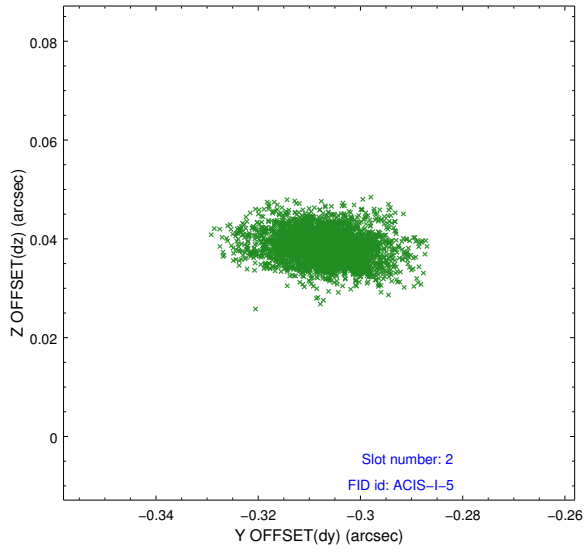
2.5.1 Slot 0



2.5.2 Slot 1



2.5.3 Slot 2



A Summary

A.1 Status

V&V Scientist	Jen Lauer
V&V Date (YYYY-MM-DD)	2012.05.01
V&V Edition	1
V&V Disposition and Status	OK
V&V Charge Time	14.4894001

A.2 Comments

Roll constraint met. Spatial window was requested by observer to block bright source in the field to prevent telemetry saturation. The spatial window was apparently not used. However, no telemetry saturation is detected.