

V&V Reference Report

L2 ASCDS Version : 8.4.4

Observation 8361 - L2 Version 3
Chandra X-Ray Center

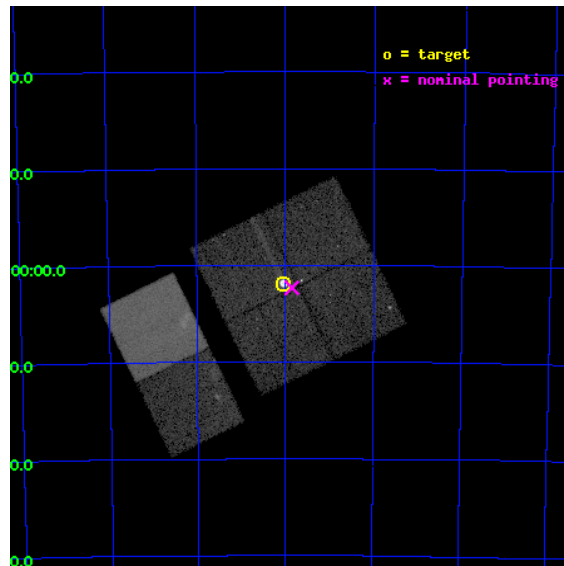
L2 Processing Date : Apr 19 2012

Contents

1	Front	2
2	OBI	3
2.1	OBI	3
2.1.1	Images	3
2.1.2	Bias	3
2.1.3	Parameters	4
2.1.4	Events	4
2.2	Compared Parameters	5
2.3	Aspect	6
2.4	Star Slots	9
2.4.1	Slot 3	9
2.4.2	Slot 4	10
2.4.3	Slot 5	11
2.4.4	Slot 6	12
2.4.5	Slot 7	13
2.5	FID Slots	14
2.5.1	Slot 0	14
2.5.2	Slot 1	15
2.5.3	Slot 2	16
A	Summary	17
A.1	Status	17
A.2	Comments	17

1 Front

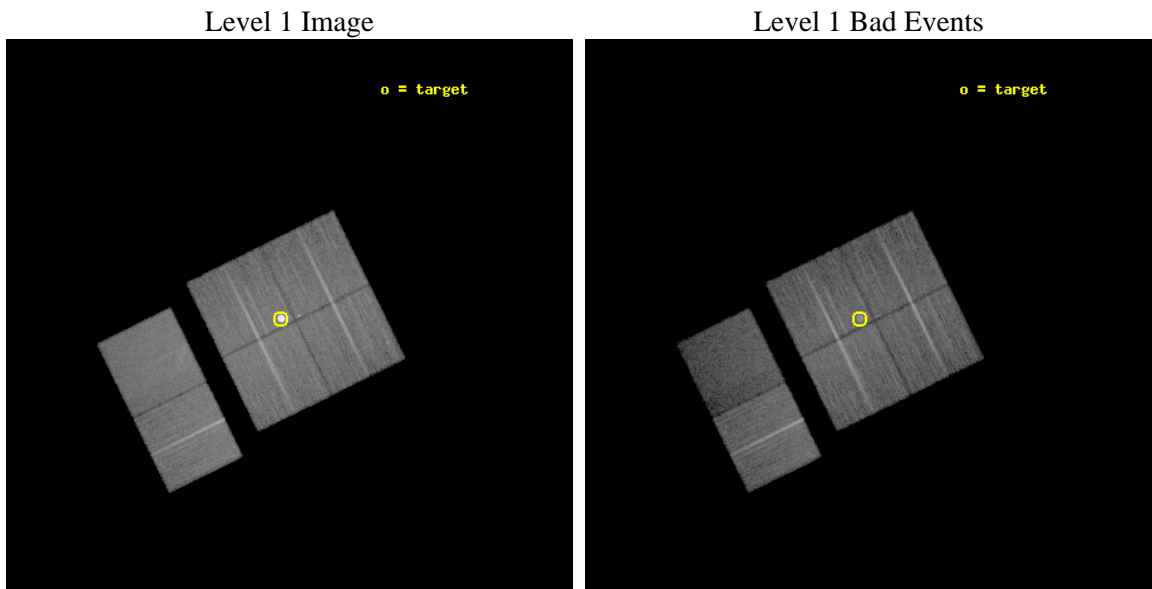
seq_num	590454	Sequence number
obs_id	8361	Observation id
title	AO8 Calibration Observations of E0102-72	Proposal title
observer	Dr. CXC Calibration	Principal investigator
object	E0102-72[I3,-120,-0.5,0.5,0]	Source name
dtycycle	0	
cycle	P	events from which exps? Prim/Second/Both
ra_targ	16.01	Observer's specified target RA [deg]
dec_targ	-72.032028	Observer's specified target Dec [deg]
ra_nom	15.962492346097	Nominal RA [deg]
dec_nom	-72.03894931828	Nominal Dec [deg]
roll_nom	243.8552962086	Nominal Roll [deg]
revision	3	Processing version of data
ontime	20044.799925387	Sum of GTIs [s]
livetime	19790.980599202	Livetime [s]
ontime0	20044.799925387	Sum of GTIs [s]
ontime1	20041.558955133	Sum of GTIs [s]
ontime2	20041.558965087	Sum of GTIs [s]
ontime3	20044.799925387	Sum of GTIs [s]
ontime6	20044.799925387	Sum of GTIs [s]
ontime7	20044.799925387	Sum of GTIs [s]
l2events	189062	Number of level 2 events



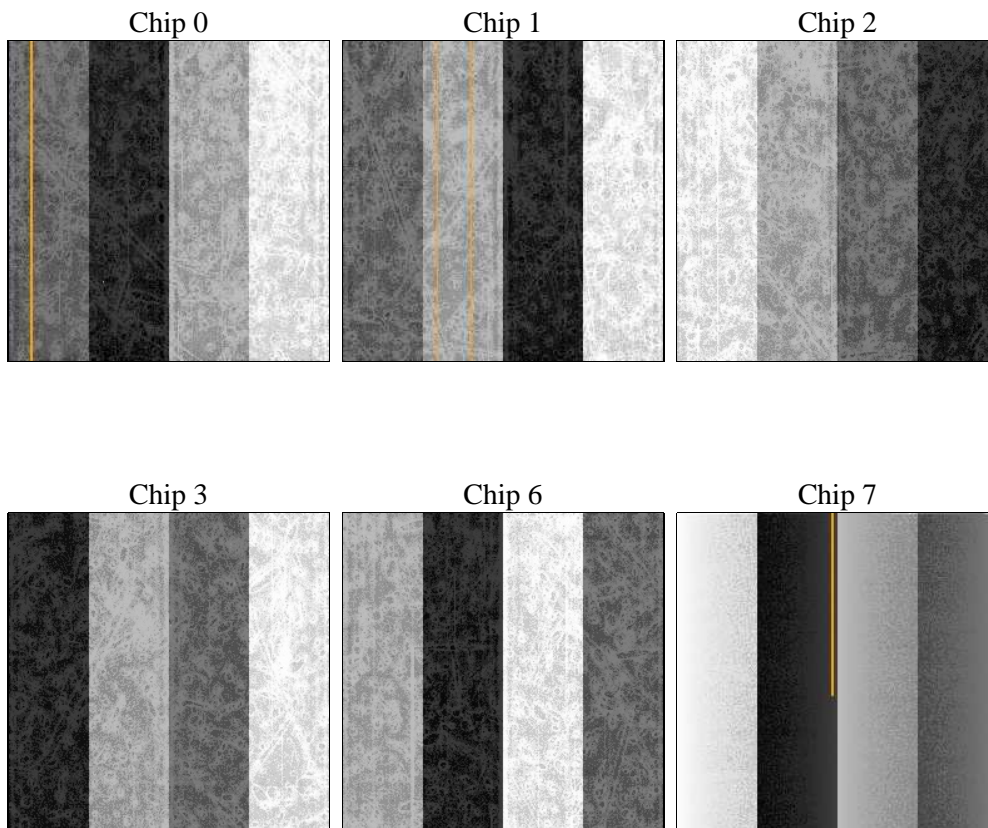
2 OBI

2.1 OBI

2.1.1 Images



2.1.2 Bias



2.1.3 Parameters

obi_num	0	Obi number	sched_exp_time	20000.000000	[s] Scheduled observation exposure time
ascdsver	8.4.4	Processing system revision	ontime	20044.799925387	Sum of GTIs [s]
caldbver	4.4.9	 	ontime0	20044.799925387	Sum of GTIs [s]
date	2012-04-19T14:37:58	Date and time of file creation	ontime1	20041.558955133	Sum of GTIs [s]
revision	3	Processing version of data	ontime2	20041.558965087	Sum of GTIs [s]
			ontime3	20044.799925387	Sum of GTIs [s]
			ontime6	20044.799925387	Sum of GTIs [s]
			ontime7	20044.799925387	Sum of GTIs [s]
			l1events	907645	Number of level 1 events

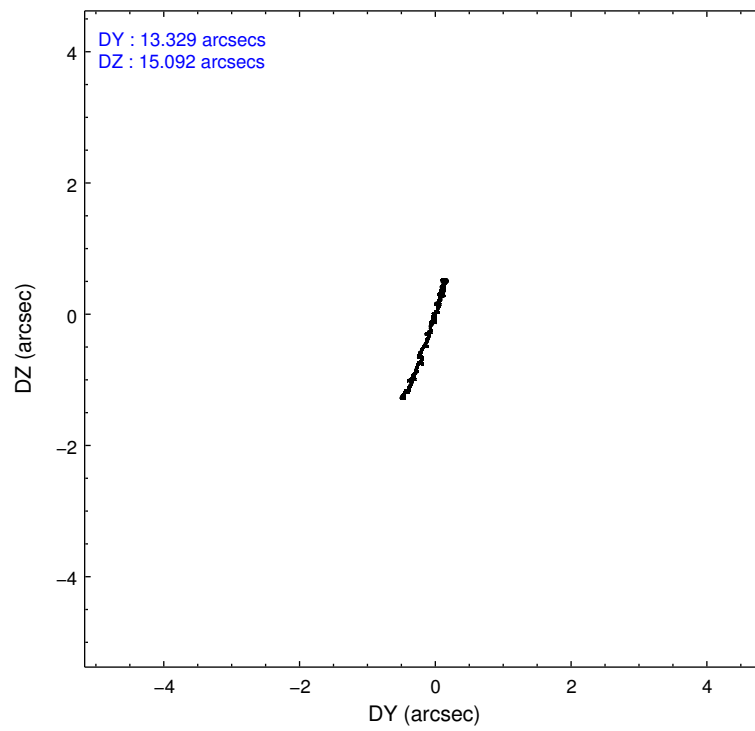
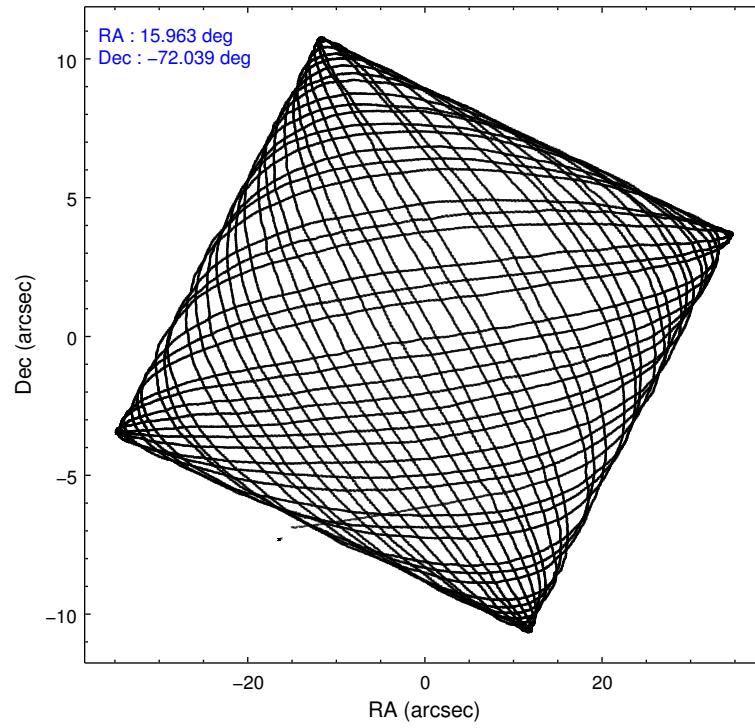
2.1.4 Events

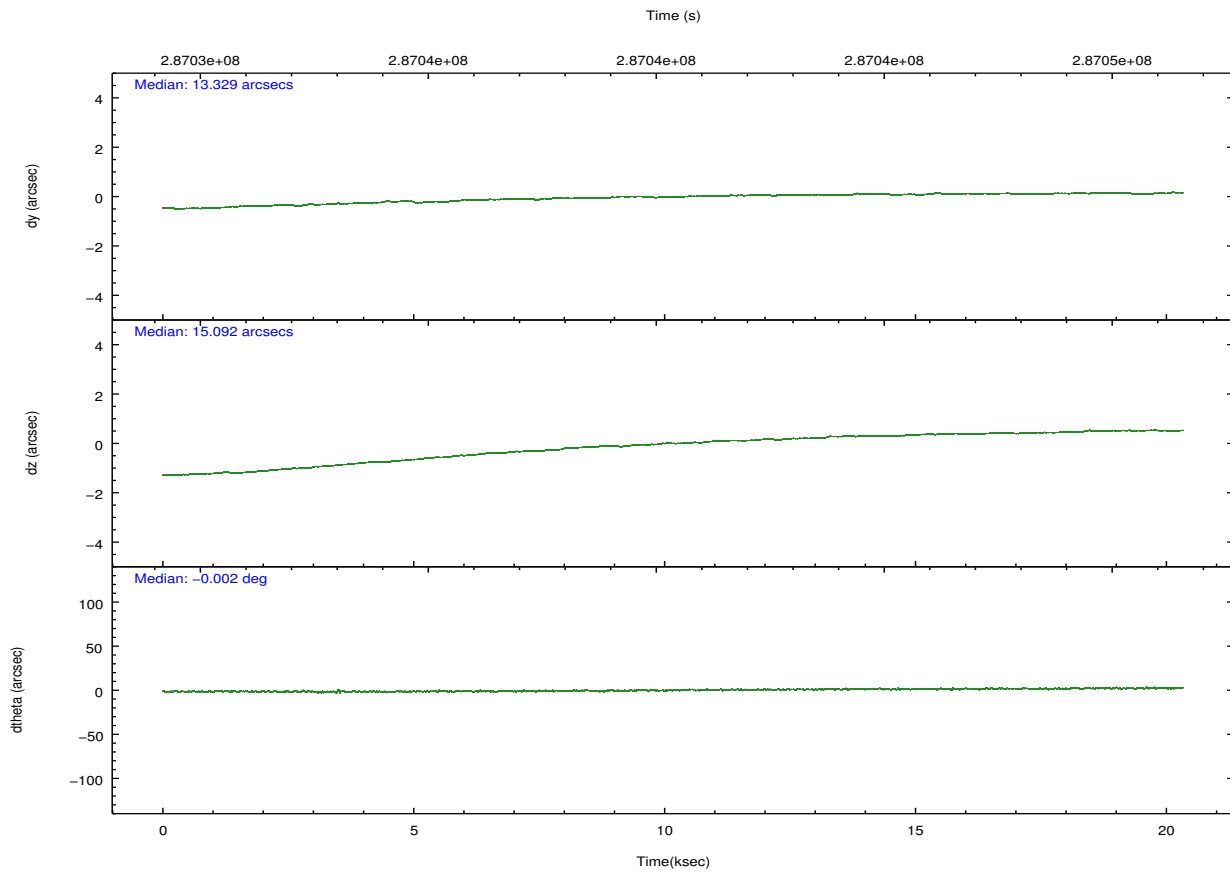
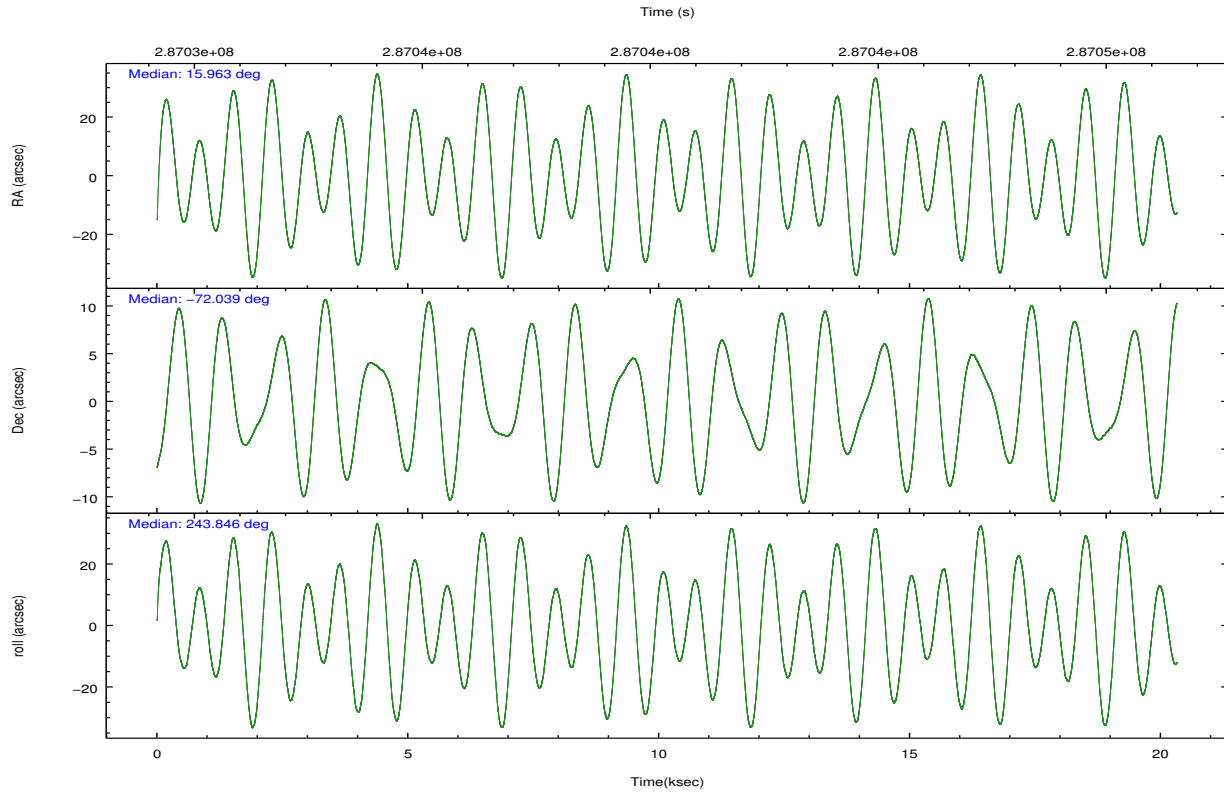
	ccd 0	ccd 1	ccd 2	ccd 3	ccd 6	ccd 7		ccd 0	ccd 1	ccd 2	ccd 3	ccd 6	ccd 7
level 1 events	136115	130552	153375	201363	149987	136253	grade 0 events	5517	6747	6168	60724	5731	7430
rejected events	121591	113930	138465	125818	134998	68378		4%	5%	4%	30%	3%	5%
rejected %	89%	87%	90%	62%	90%	50%	grade 1 events	80	105	91	777	68	184
								0%	0%	0%	0%	0%	0%
							grade 2 events	3453	3458	3435	7066	3244	14462
								2%	2%	2%	3%	2%	10%
							grade 3 events	1561	1719	1411	2506	1501	6535
								1%	1%	0%	1%	1%	4%
							grade 4 events	1457	1694	1508	2412	1582	6501
								1%	1%	0%	1%	1%	4%
							grade 5 events	4158	4584	3894	5091	4976	14453
								3%	3%	2%	2%	3%	10%
							grade 6 events	2539	3005	2392	2849	2932	32960
								1%	2%	1%	1%	1%	24%
							grade 7 events	117350	109240	134476	119938	129953	53728
								86%	83%	87%	59%	86%	39%

2.2 Compared Parameters

Parameter	Planned	Actual	Parameter	Planned	Actual
Instrument	ACIS	ACIS	Obspar format version number	7	7
Detector	ACIS-012367	ACIS-012367	Obspar file type	PREDICTED	ACTUAL
Grating	NONE	NONE	Obspar update status	NONE	UPDATED
Data mode	VFAINT	VFAINT	CCD I0 on	Y	Y
Observation mode	POINTING	POINTING	CCD I1 on	Y	Y
[deg] Pointing RA	15.956136	15.96249234609731	CCD I2 on	Y	Y
[deg] Pointing Dec	-72.011539	-72.03894931827979	CCD I3 on	Y	Y
[deg] Pointing Roll	243.640559	243.8552962086038	CCD S0 on	N	N
[s] Window start time (MET)	281318465.184000	281318465.184000	CCD S1 on	N	N
[s] Window stop time (MET)	294278465.184000	294278465.184000	CCD S2 on	O1	Y
[mm] SIM focus pos	-0.782348	-0.7809083437167272	CCD S3 on	Y	Y
[mm] SIM defocus	0	0.001439871863259334	CCD S4 on	N	N
[mm] SIM translation stage pos	-233.592463	-233.5874344608287	CCD S5 on	N	N
[mm] SIM translation stage offset	0	-0.005018542100998502	Number of optional ACIS chips dropped	0	0
[s] Observation start time (MET)	287030538.184000	287029461.91134	On-chip summing requested	N	N
Observation start date	2007-02-05T02:41:13	2007-02-05T02:24:21	Subarray requested	NONE	NONE
[s] Observation end time (MET)	287050538.184000	287051326.69988	Alternating exposures requested	N	N
Observation end date	2007-02-05T08:14:33	2007-02-05T08:28:46	[s] Primary exposure time	0.000000	3.2
Read mode	TIMED	TIMED			

2.3 Aspect



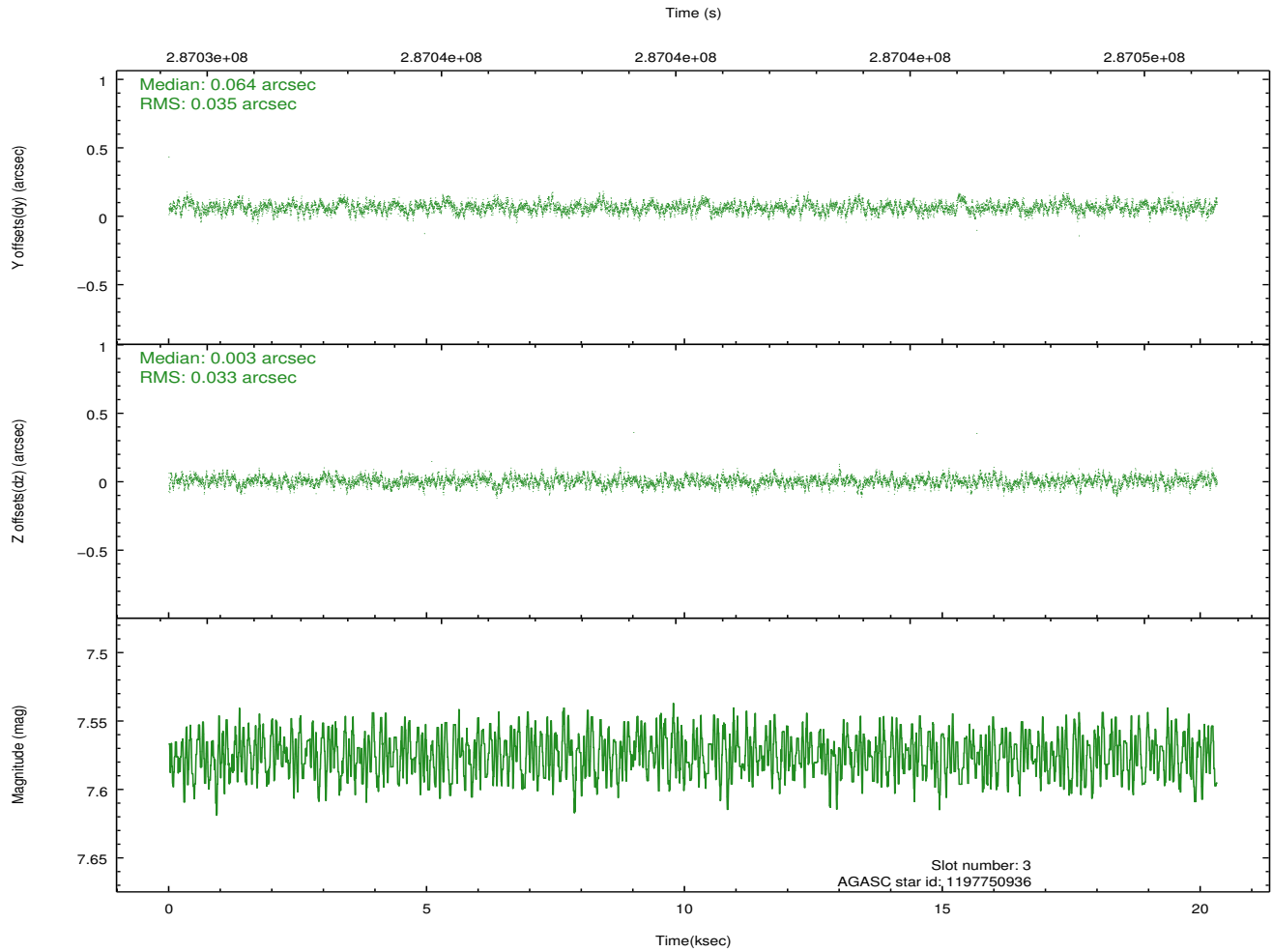
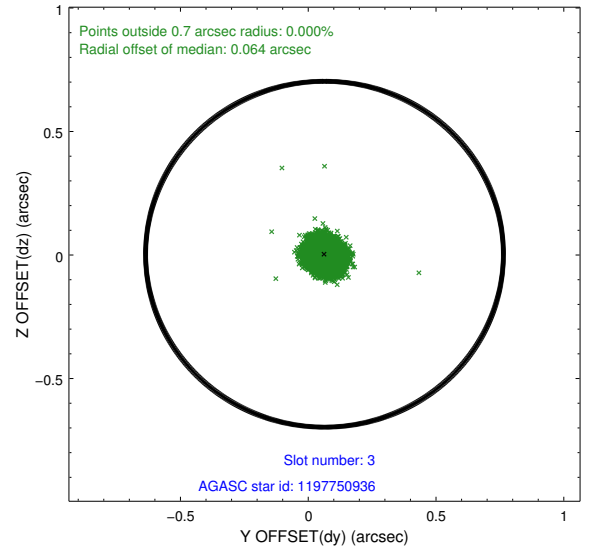
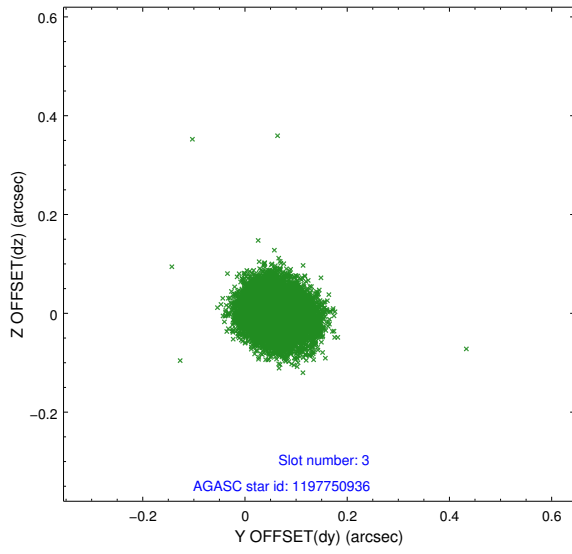


Slot Statistics

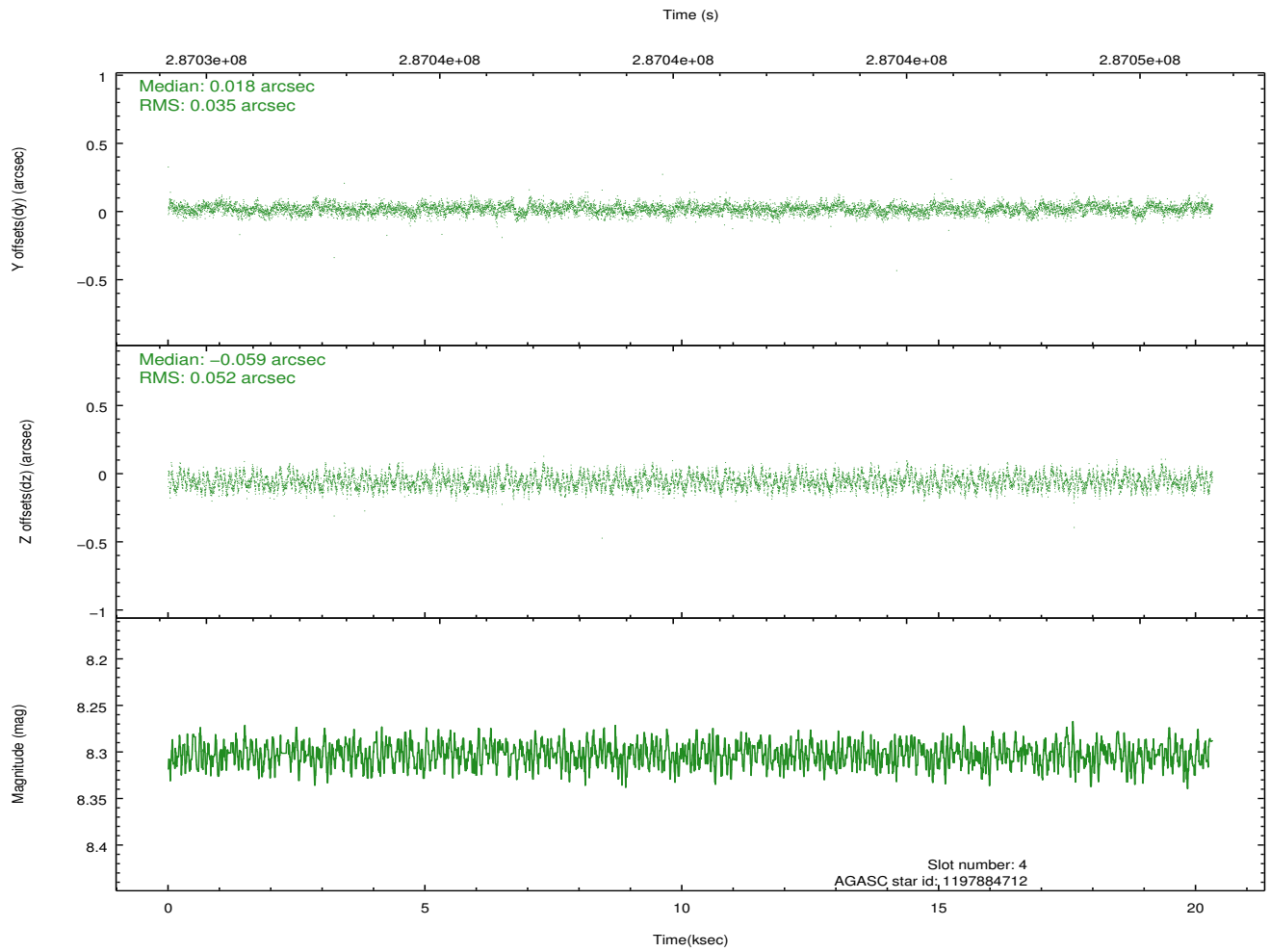
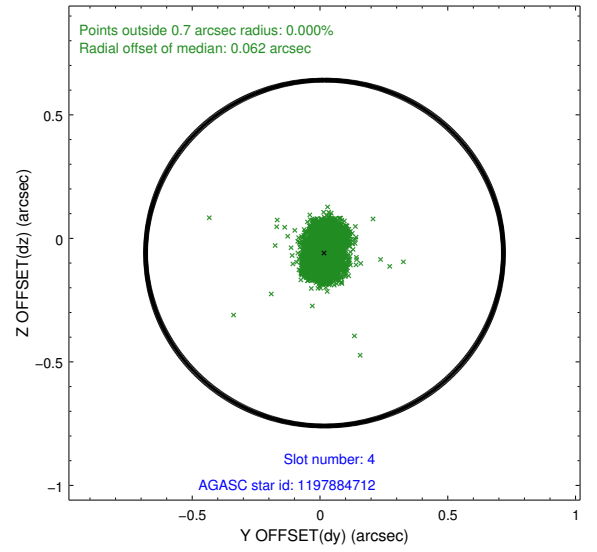
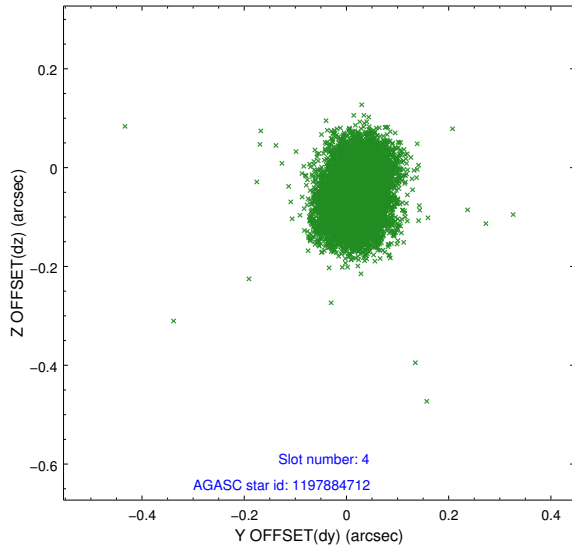
slot	status	id	mag	n_pts	med_dy	med_dz	dr1	dr2	ra	dec	mean_y	mean_z
0	FID	ACIS-I-1	7.23	4958	0.048	-0.034	0.028	0.050	0.000000	0.000000	926.28	-838.56
1	FID	ACIS-I-5	7.22	4958	-0.220	0.045	0.010	0.018	0.000000	0.000000	-1821.98	1058.92
2	FID	ACIS-I-6	7.24	4958	0.082	0.060	0.021	0.044	0.000000	0.000000	391.67	1703.63
3	GUIDE	1197750936	7.57	9915	0.064	0.003	0.051	0.081	15.387940	-71.549550	-1199.24	-1317.04
4	GUIDE	1197884712	8.30	9913	0.018	-0.059	0.065	0.106	16.087398	-72.252690	714.24	514.68
5	GUIDE	1197885104	9.36	9905	0.039	-0.026	0.099	0.160	17.845067	-72.189368	-319.89	2162.17
6	GUIDE	1197885328	7.25	9908	0.019	0.157	0.061	0.097	16.283090	-71.733943	-1058.63	-111.88
7	GUIDE	1198283128	7.73	9910	-0.140	-0.077	0.050	0.079	17.272580	-72.642428	1420.97	2282.35

2.4 Star Slots

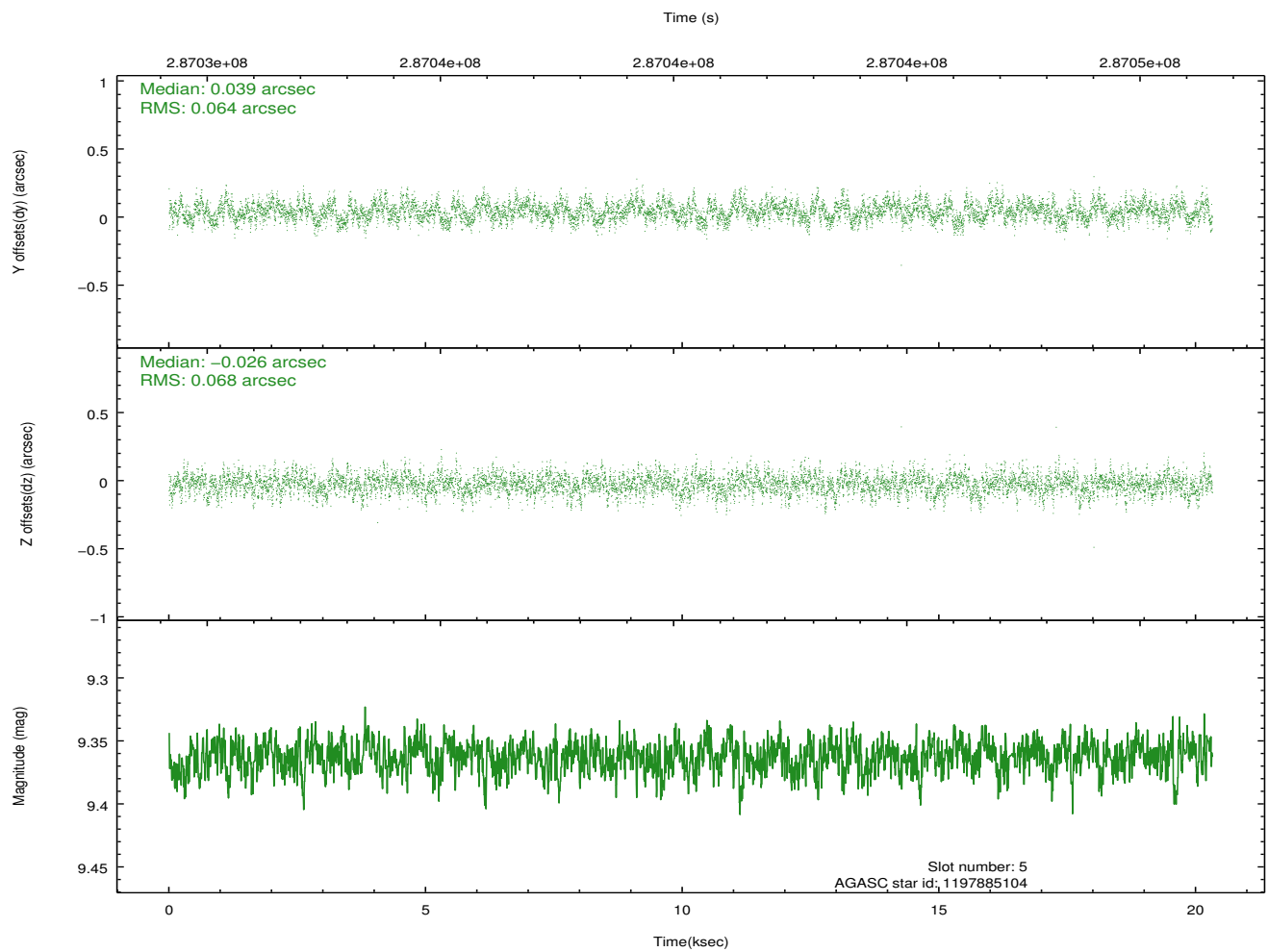
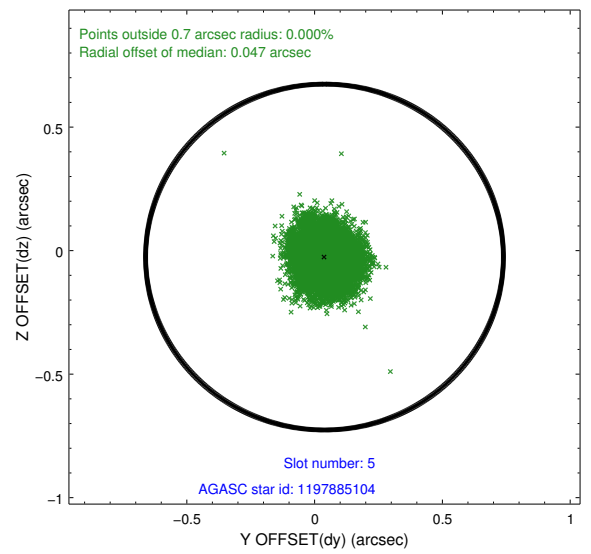
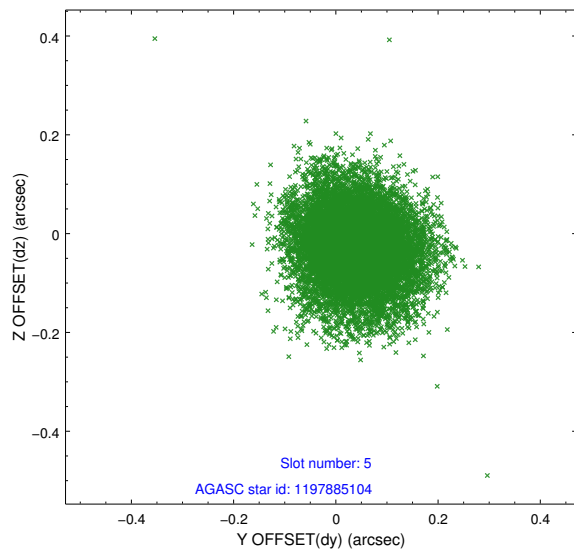
2.4.1 Slot 3



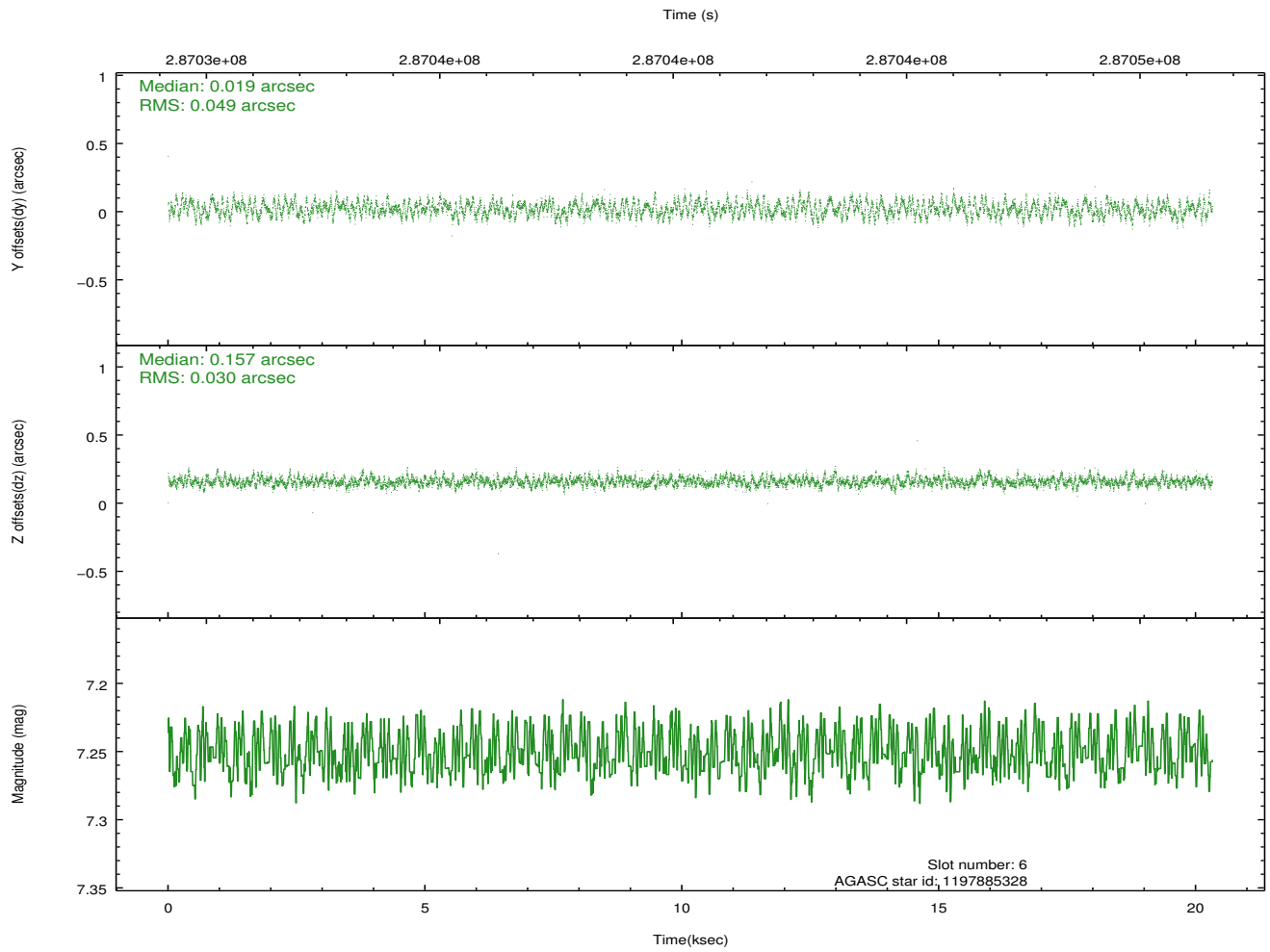
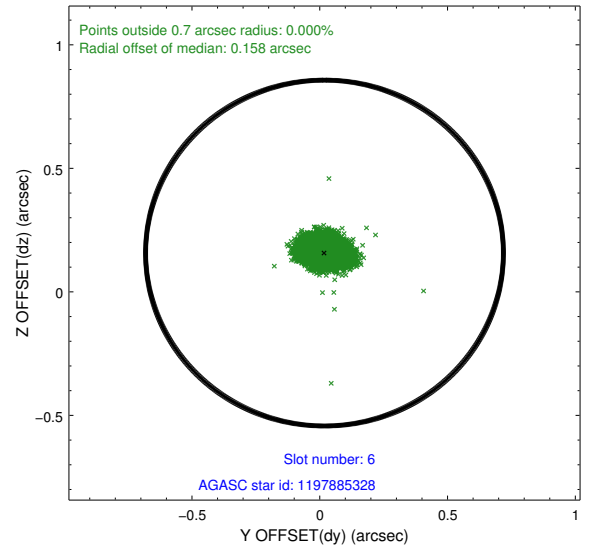
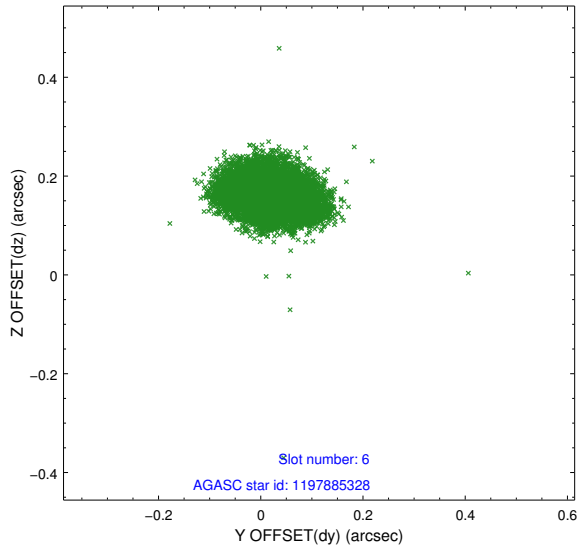
2.4.2 Slot 4



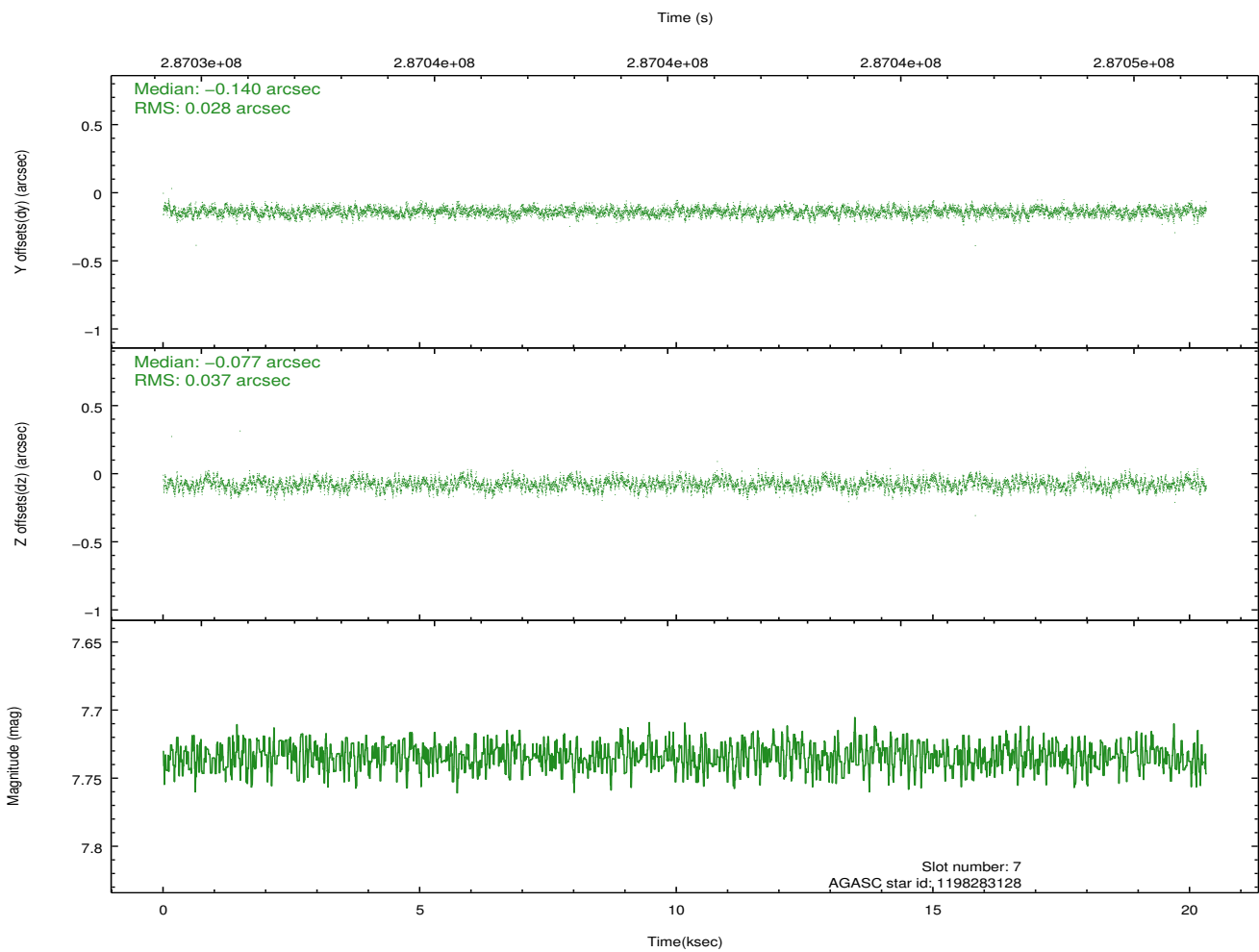
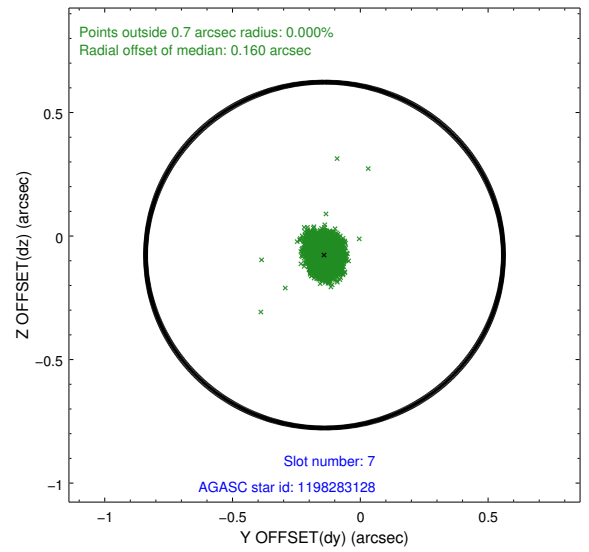
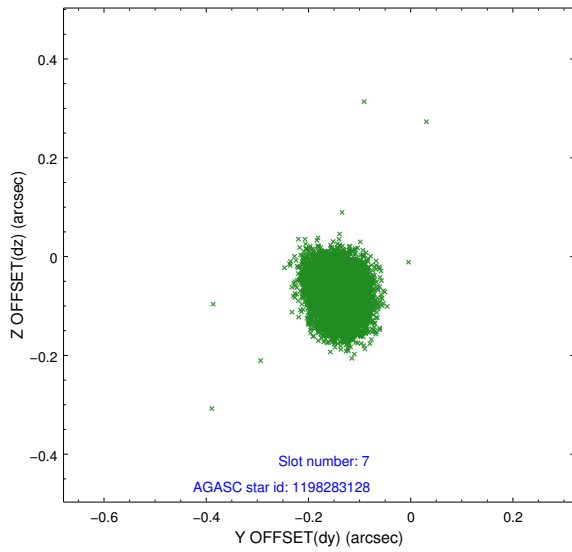
2.4.3 Slot 5



2.4.4 Slot 6

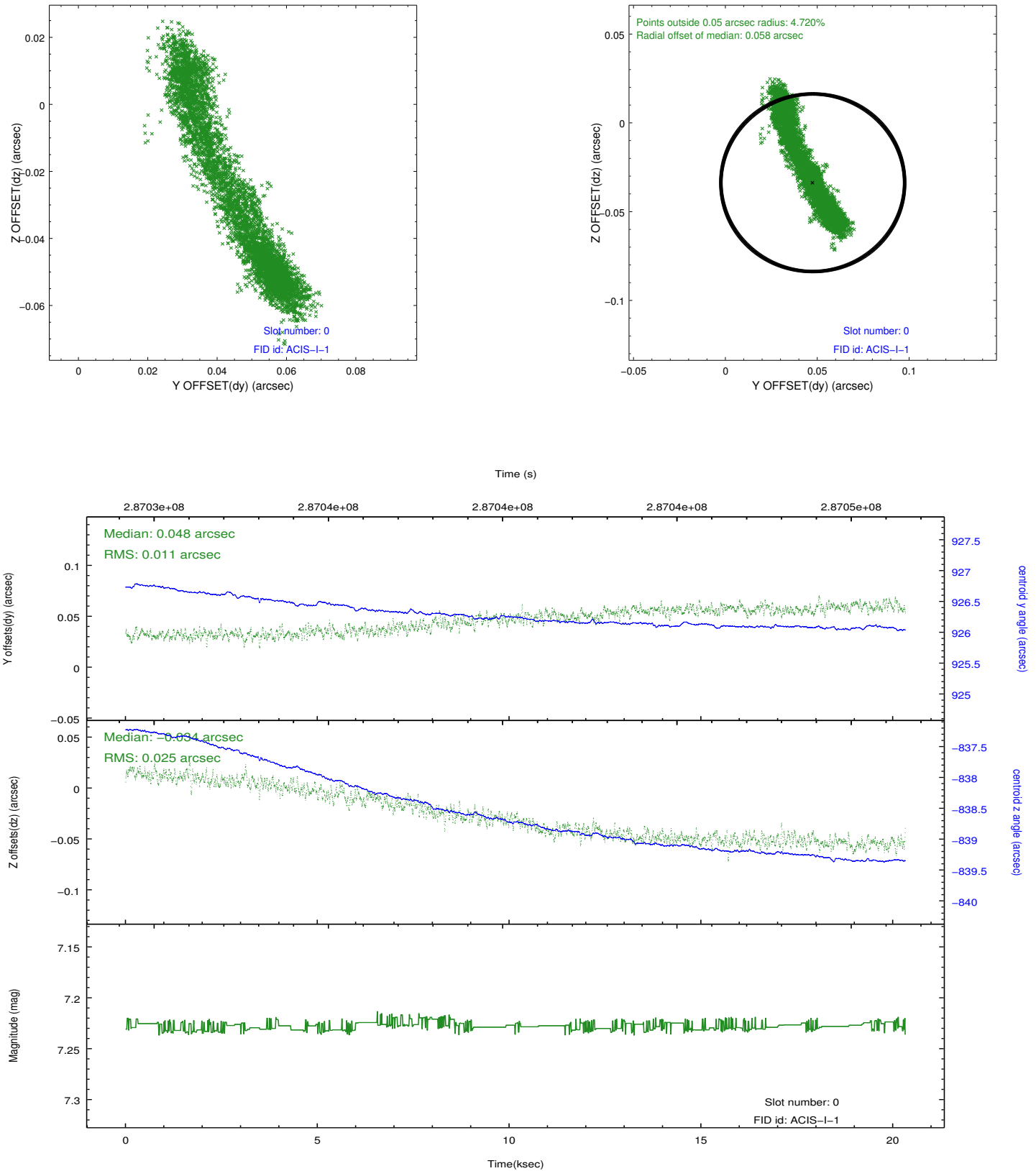


2.4.5 Slot 7

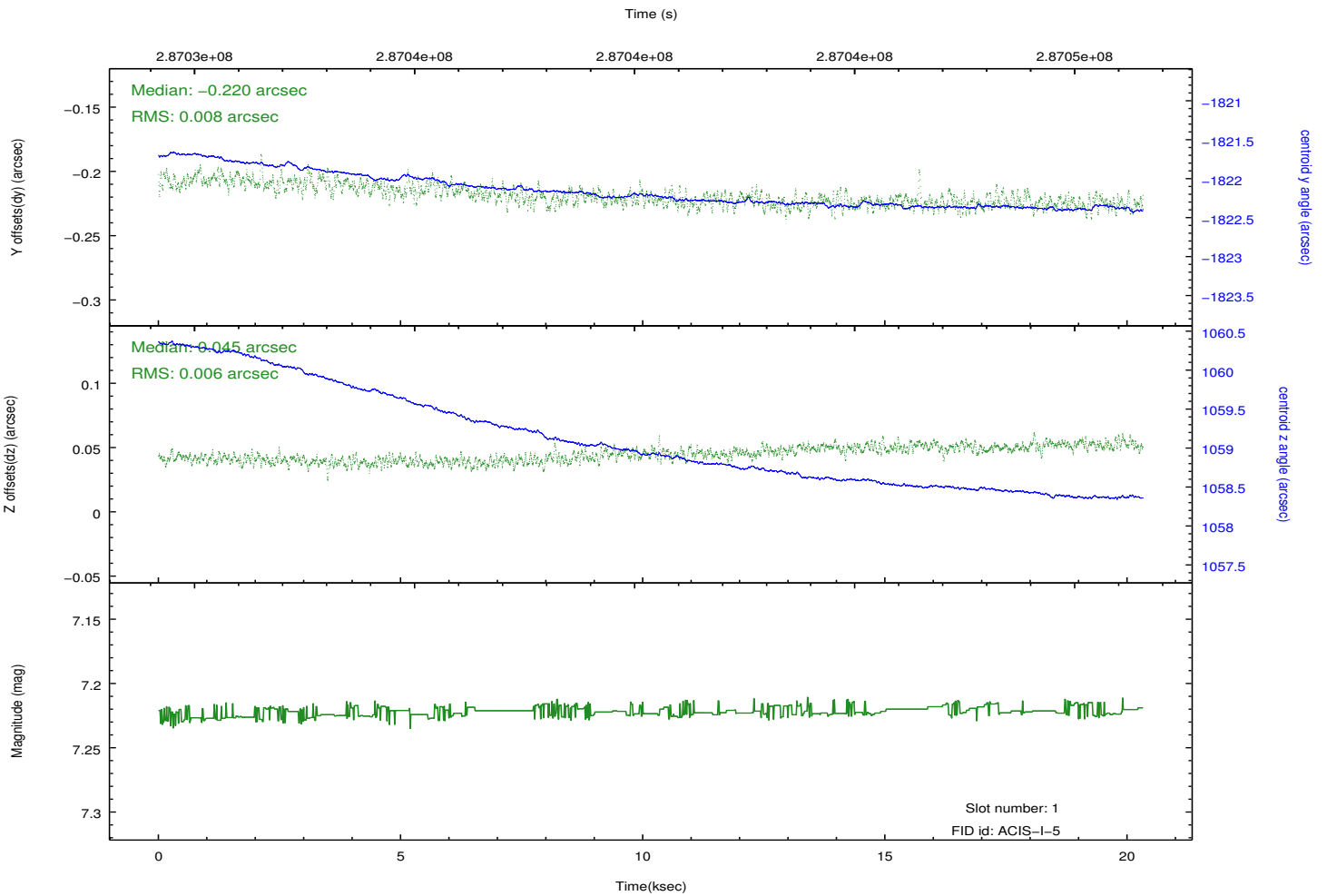
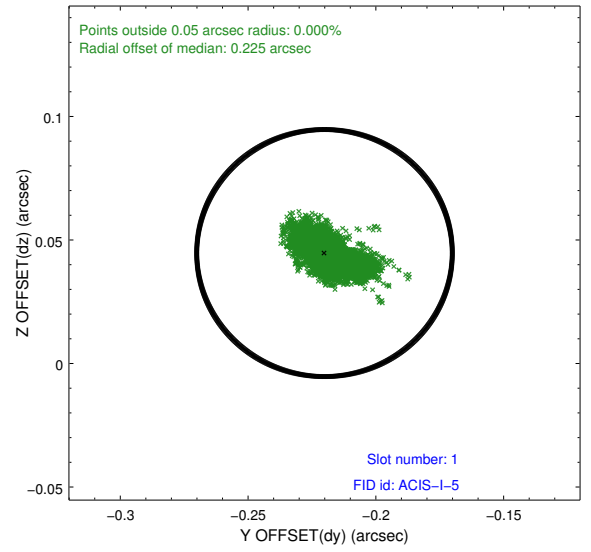
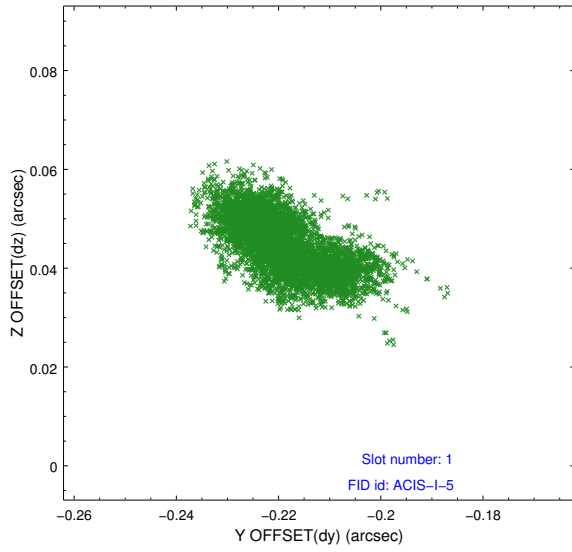


2.5 FID Slots

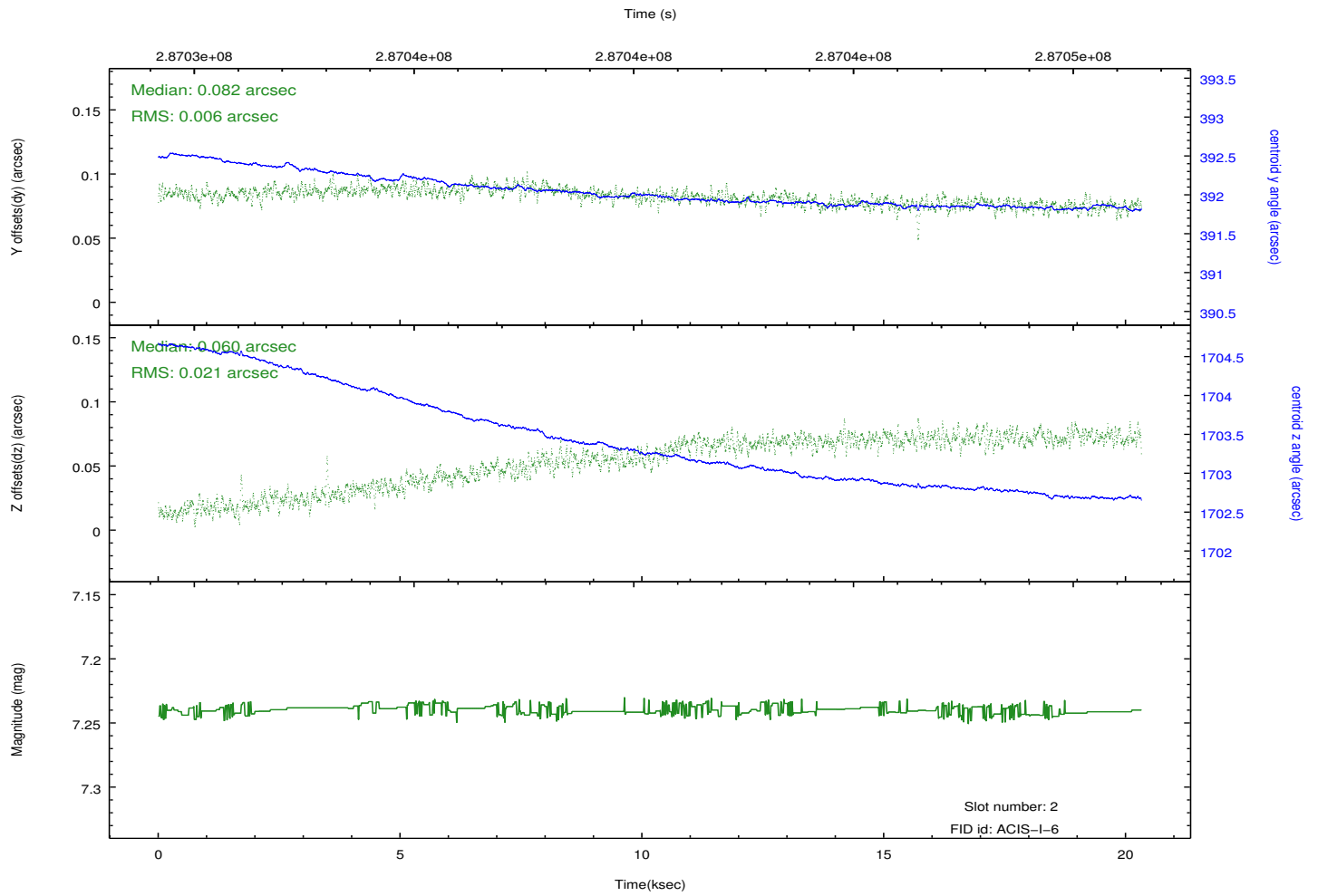
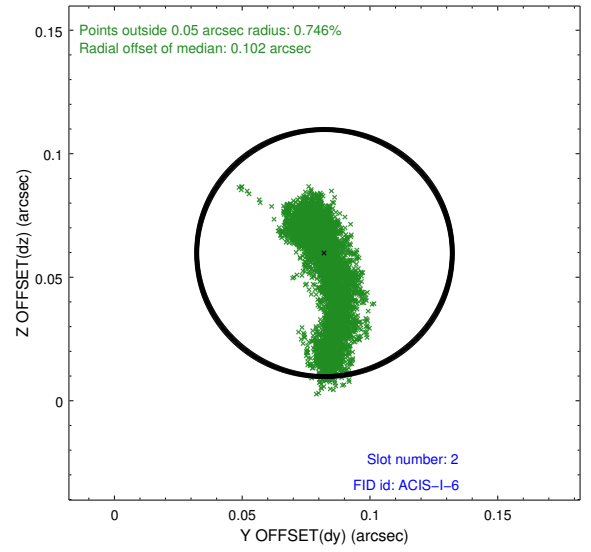
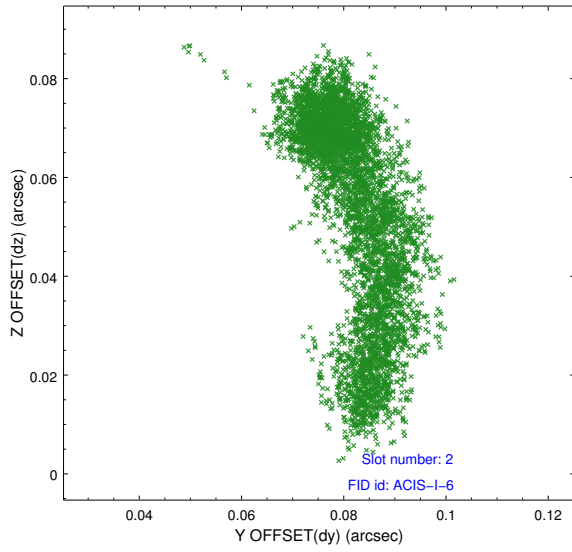
2.5.1 Slot 0



2.5.2 Slot 1



2.5.3 Slot 2



A Summary

A.1 Status

V&V Scientist	Beth Sundheim
V&V Date (YYYY-MM-DD)	2012.04.20
V&V Edition	1
V&V Disposition and Status	OK
V&V Charge Time	20.0447999

A.2 Comments

Window preference met.