

V&V Reference Report

L2 ASCDS Version : 8.4.4

Observation 8591 - L2 Version 2
Chandra X-Ray Center

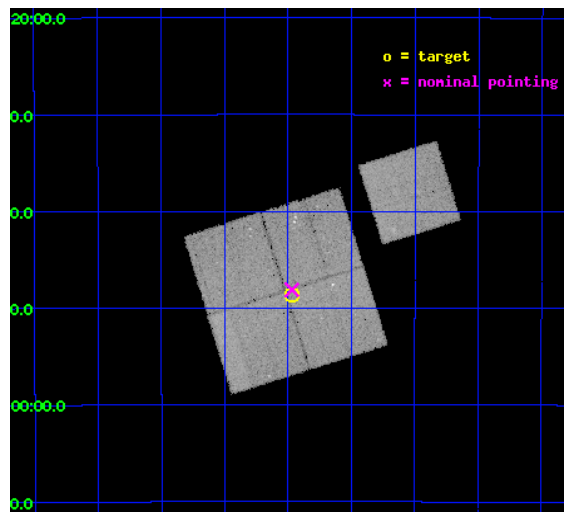
L2 Processing Date : May 1 2012

Contents

1	Front	2
2	OBI	3
2.1	OBI	3
2.1.1	Images	3
2.1.2	Bias	3
2.1.3	Parameters	4
2.1.4	Events	4
2.2	Compared Parameters	5
2.3	Aspect	6
2.4	Star Slots	9
2.4.1	Slot 3	9
2.4.2	Slot 4	10
2.4.3	Slot 5	11
2.4.4	Slot 6	12
2.4.5	Slot 7	13
2.5	FID Slots	14
2.5.1	Slot 0	14
2.5.2	Slot 1	15
2.5.3	Slot 2	16
A	Summary	17
A.1	Status	17
A.2	Comments	17

1 Front

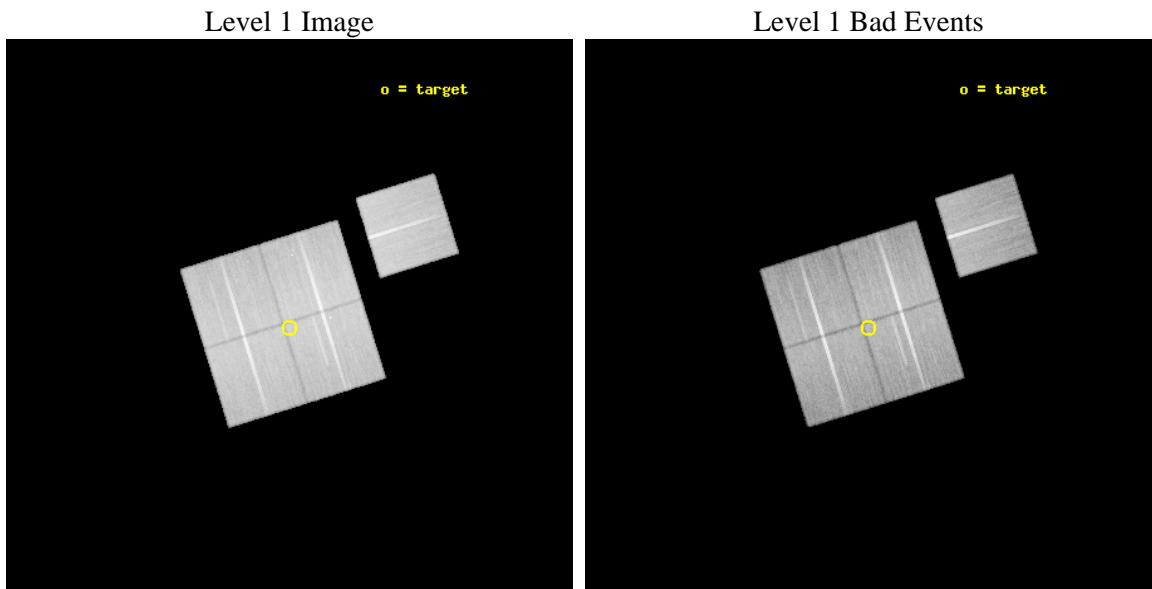
seq_num	900737	Sequence number
obs_id	8591	Observation id
title	The Chandra Deep Field-South Survey: A Public Chandra Legacy	Propo
observer	Dr. Harvey Tananbaum	Principal investigator
object	Chandra Deep Field-South	Source name
dtcycle	0	
cycle	P	events from which exps? Prim/Second/Both
ra_targ	53.1175	Observer's specified target RA [deg]
dec_targ	-27.81	Observer's specified target Dec [deg]
ra_nom	53.117512397603	Nominal RA [deg]
dec_nom	-27.801910024938	Nominal Dec [deg]
roll_nom	72.708696500419	Nominal Roll [deg]
revision	2	Processing version of data
ontime	46033.82027638	Sum of GTIs [s]
livetime	45432.354524863	Livetime [s]
ontime0	46039.979096949	Sum of GTIs [s]
ontime1	46036.879176617	Sum of GTIs [s]
ontime2	46024.356365025	Sum of GTIs [s]
ontime3	46033.82027638	Sum of GTIs [s]
ontime6	46033.656156123	Sum of GTIs [s]
l2events	157459	Number of level 2 events



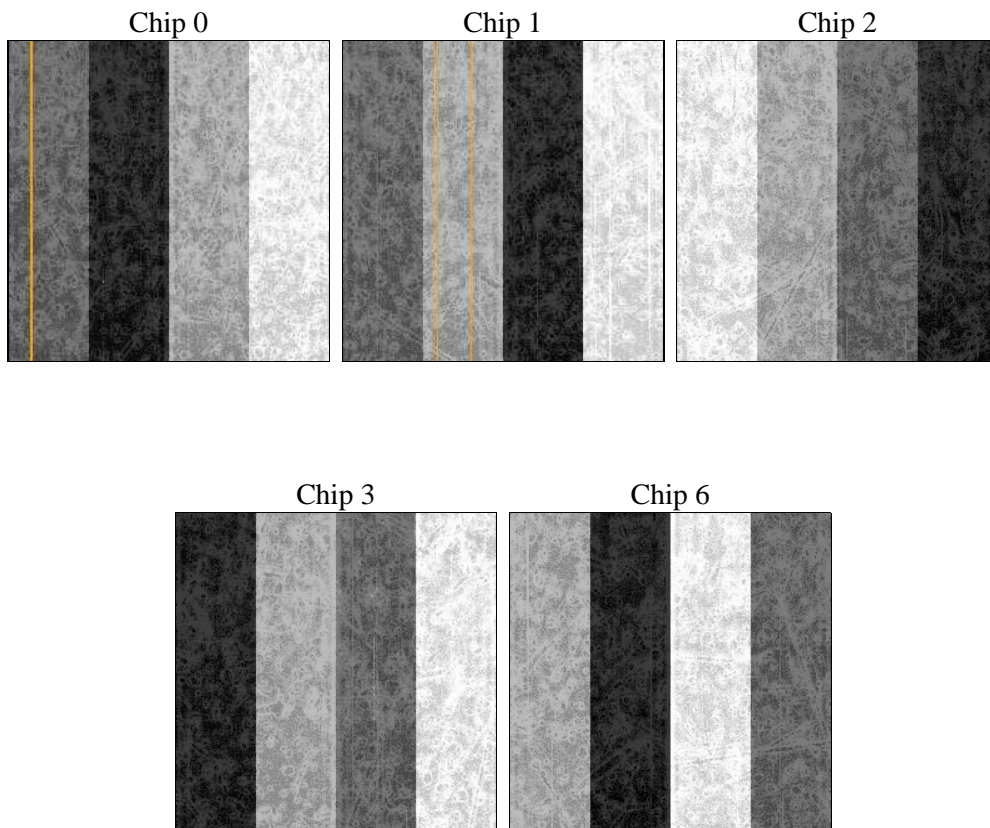
2 OBI

2.1 OBI

2.1.1 Images



2.1.2 Bias



2.1.3 Parameters

obi_num	0	Obi number	sched_exp_time	46000.000000	[s] Scheduled observation exposure time
ascdsver	8.4.4	Processing system revision	ontime	46033.82027638	Sum of GTIs [s]
caldsver	4.4.9	 	ontime0	46039.979096949	Sum of GTIs [s]
date	2012-05-01T21:51:04	Date and time of file creation	ontime1	46036.879176617	Sum of GTIs [s]
revision	2	Processing version of data	ontime2	46024.356365025	Sum of GTIs [s]
			ontime3	46033.82027638	Sum of GTIs [s]
			ontime6	46033.656156123	Sum of GTIs [s]
			l1events	1888435	Number of level 1 events

2.1.4 Events

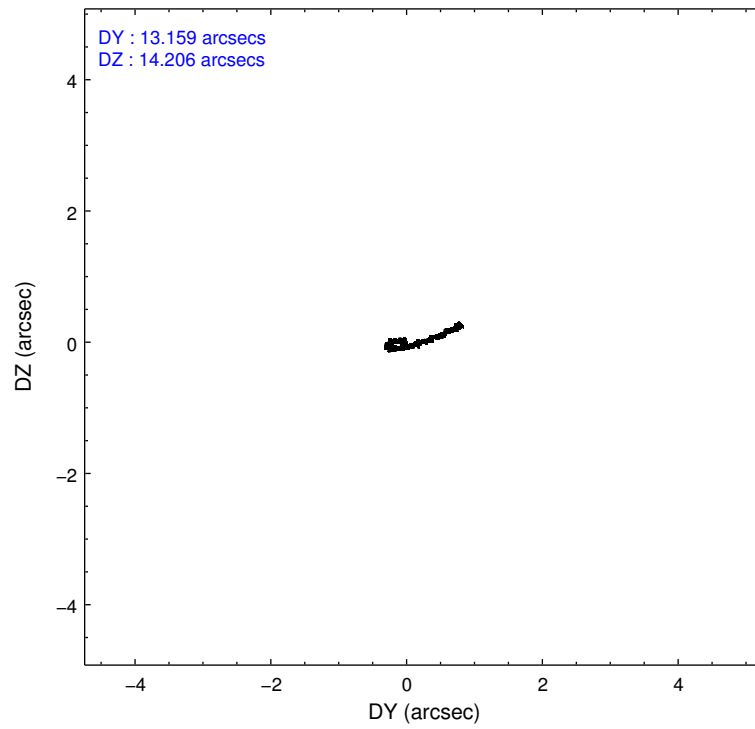
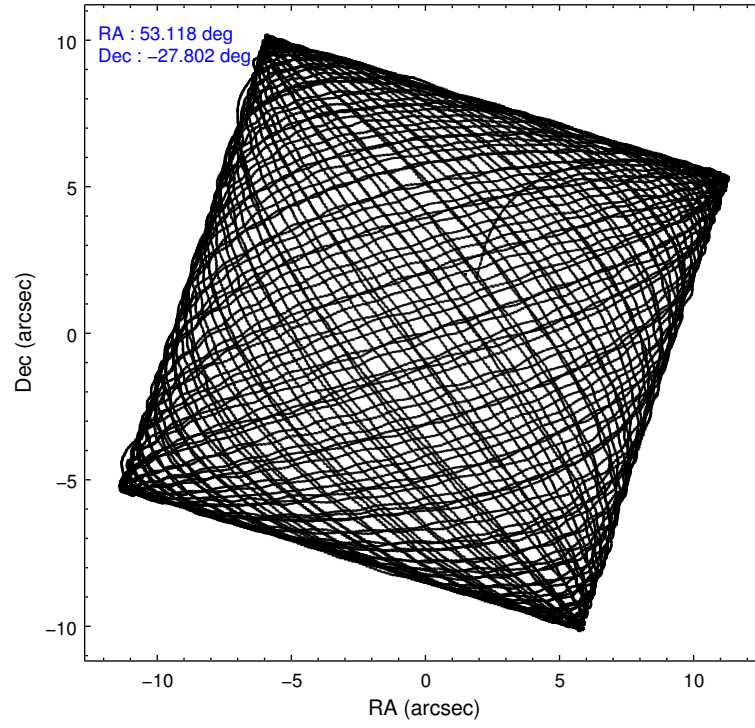
	ccd 0	ccd 1	ccd 2	ccd 3	ccd 6
level 1 events	362440	359948	409202	378563	378282
rejected events	325059	317968	371633	342828	340700
rejected %	89%	88%	90%	90%	90%

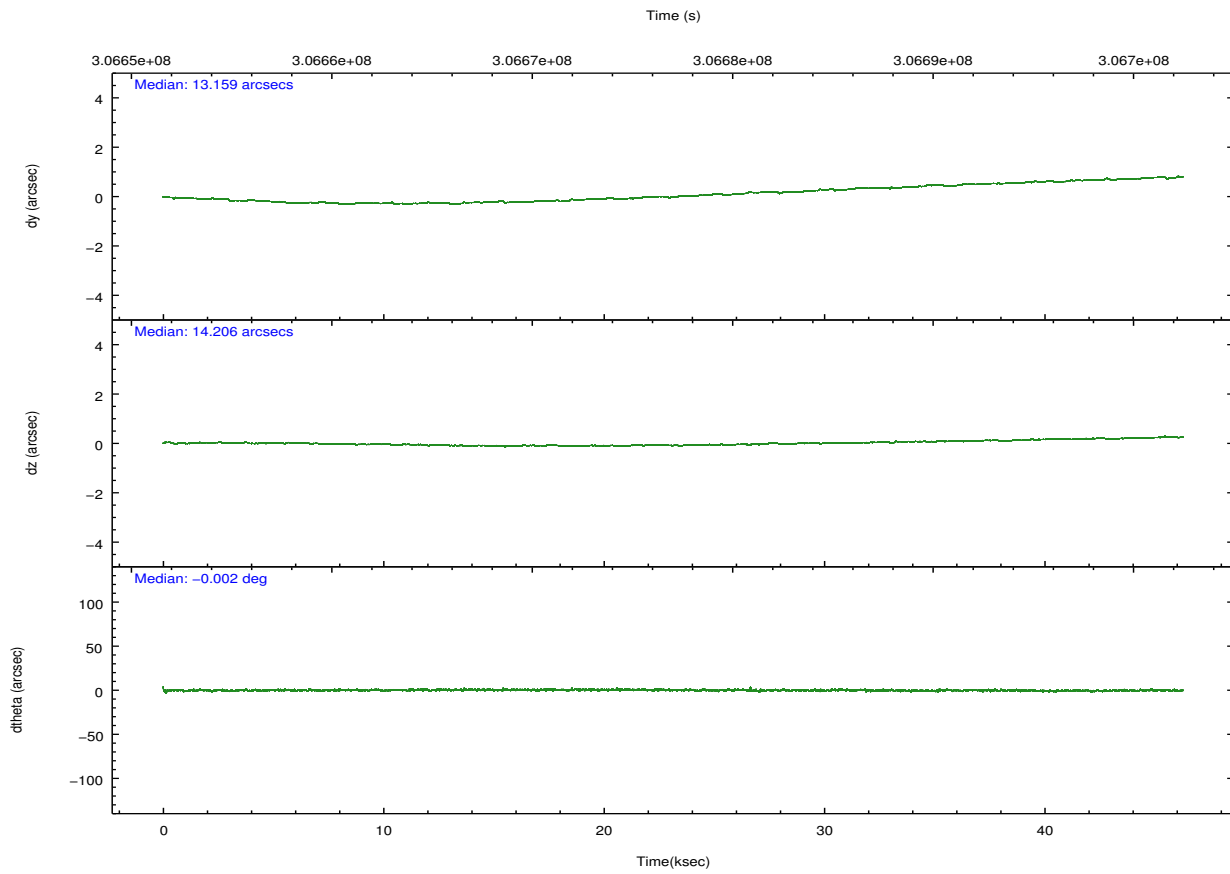
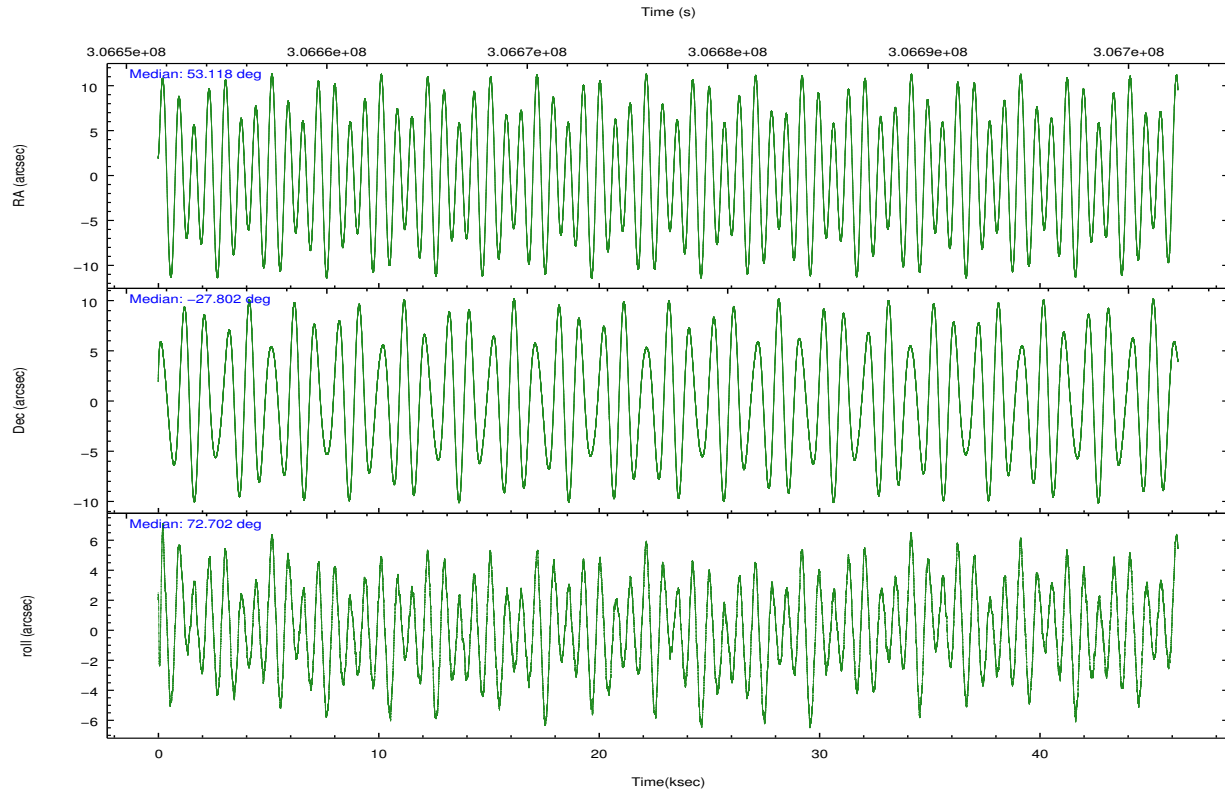
	ccd 0	ccd 1	ccd 2	ccd 3	ccd 6
grade 0 events	12766	14951	13506	12371	12875
	3%	4%	3%	3%	3%
grade 1 events	196	172	237	213	204
	0%	0%	0%	0%	0%
grade 2 events	9111	9585	9081	7896	8292
	2%	2%	2%	2%	2%
grade 3 events	4230	4578	3972	4031	4268
	1%	1%	0%	1%	1%
grade 4 events	3955	4466	4030	4109	4131
	1%	1%	0%	1%	1%
grade 5 events	13248	14697	12490	15217	15035
	3%	4%	3%	4%	3%
grade 6 events	7321	8404	6981	7328	8020
	2%	2%	1%	1%	2%
grade 7 events	311613	303095	358905	327398	325457
	85%	84%	87%	86%	86%

2.2 Compared Parameters

Parameter	Planned	Actual	Parameter	Planned	Actual
Instrument	ACIS	ACIS	Obspar format version number	7	7
Detector	ACIS-01236	ACIS-01236	Obspar file type	PREDICTED	ACTUAL
Grating	NONE	NONE	Obspar update status	NONE	UPDATED
Data mode	VFAINT	VFAINT	Number of optional ACIS chips dropped	0	0
Observation mode	POINTING	POINTING	On-chip summing requested	N	N
[deg] Pointing RA	53.124460	53.11751239760332	Subarray requested	NONE	NONE
[deg] Pointing Dec	-27.828719	-27.80191002493762	Alternating exposures requested	N	N
[deg] Pointing Roll	72.503244	72.70869650041926	[s] Primary exposure time	0.000000	3.1
[mm] SIM focus pos	-0.782348	-0.7809083437167272			
[mm] SIM defocus	0	0.001439871863259334			
[mm] SIM translation stage pos	-233.592463	-233.5874344608287			
[mm] SIM translation stage offset	0	-0.005018542100998502			
[s] Observation start time (MET)	306654147.184000	306653172.92421			
Observation start date	2007-09-20T05:41:22	2007-09-20T05:26:12			
[s] Observation end time (MET)	306700147.184000	306700986.10151			
Observation end date	2007-09-20T18:28:02	2007-09-20T18:43:06			
Read mode	TIMED	TIMED			

2.3 Aspect



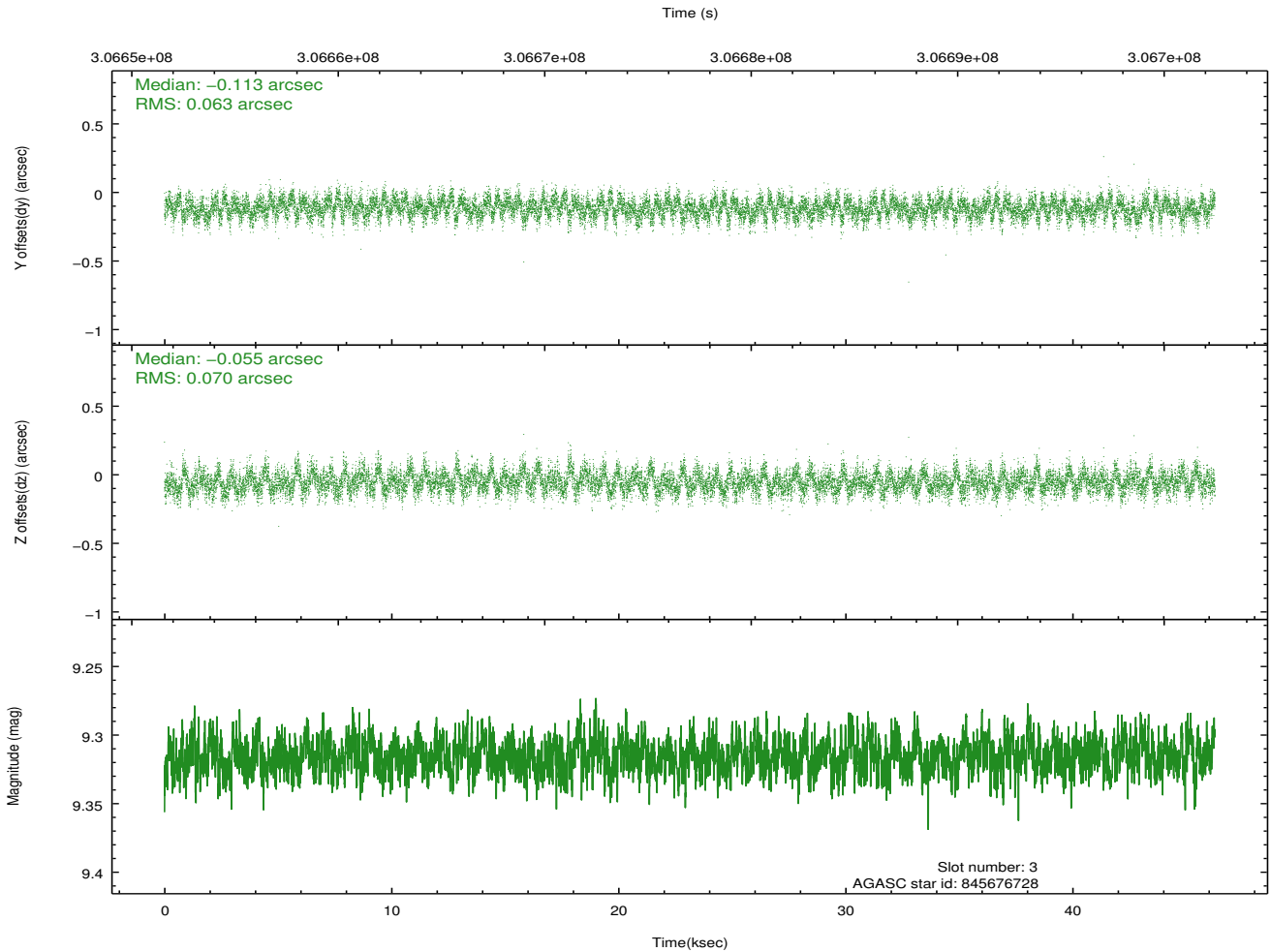
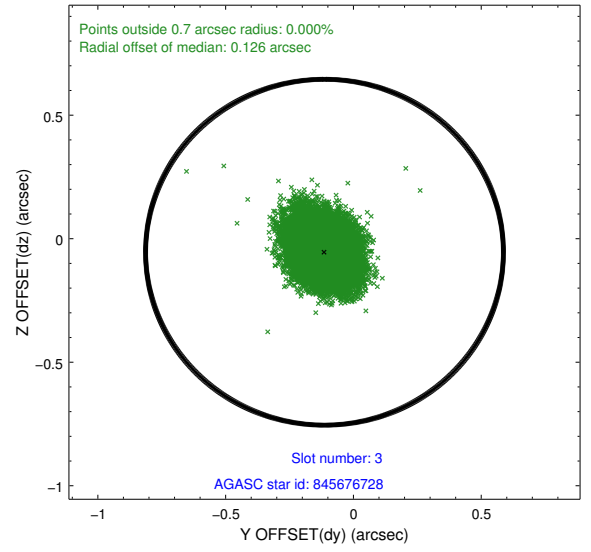
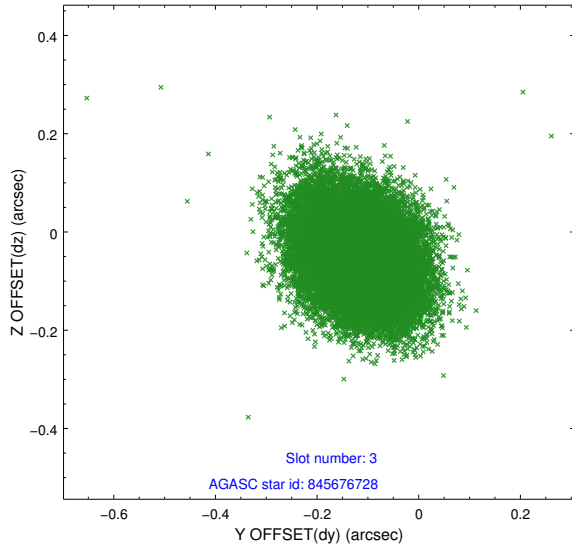


Slot Statistics

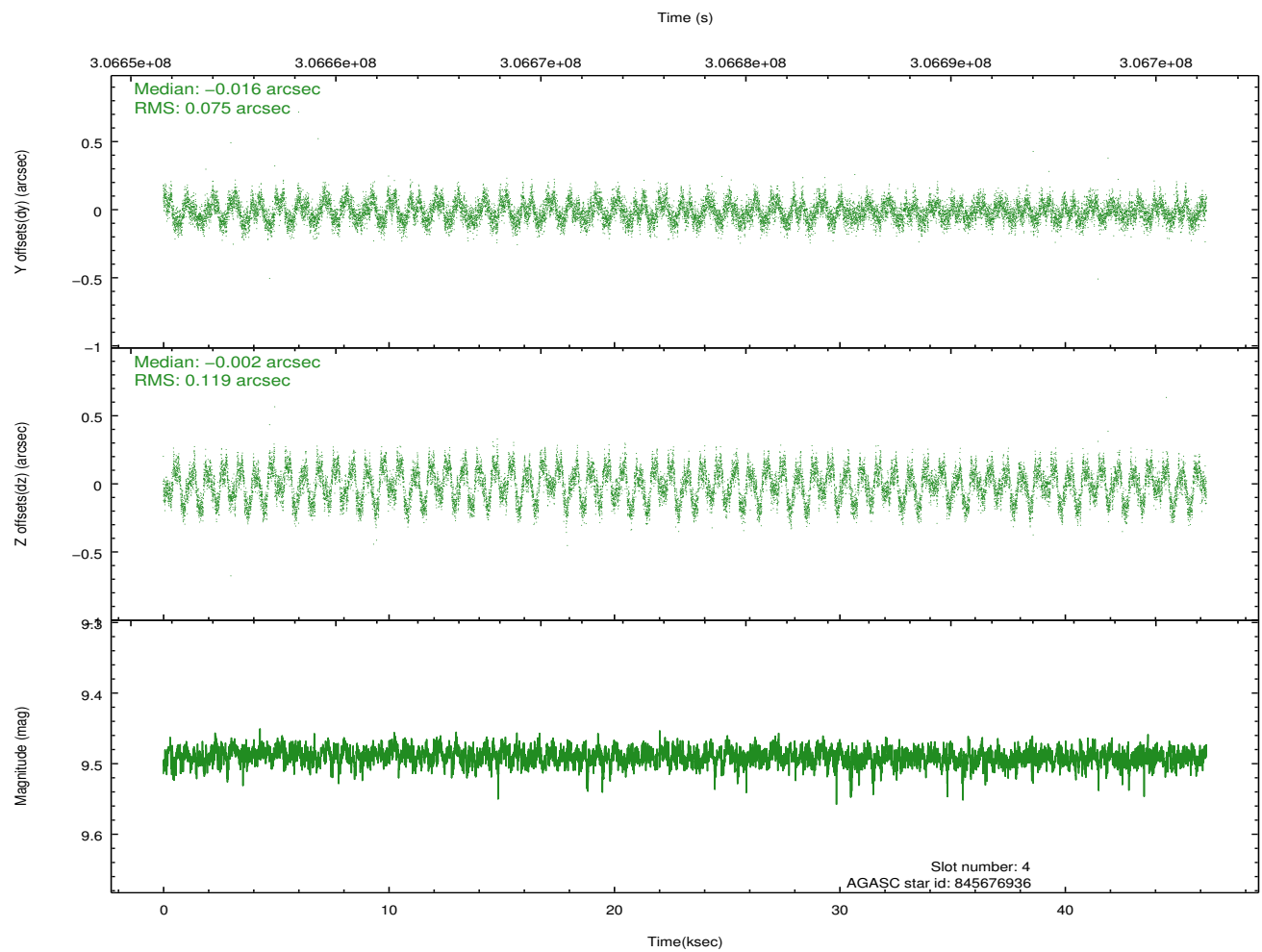
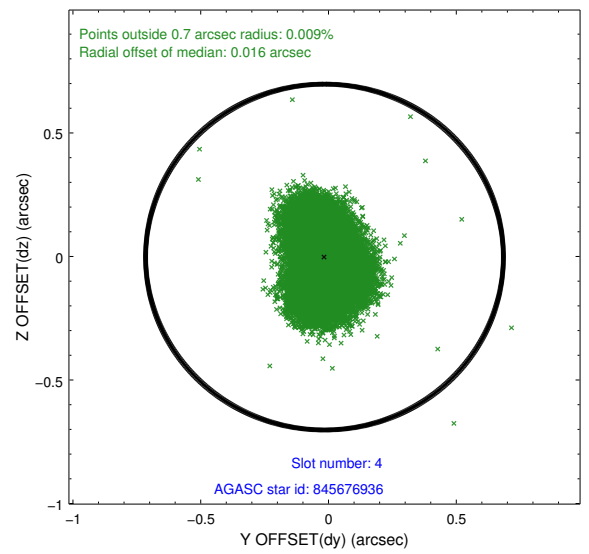
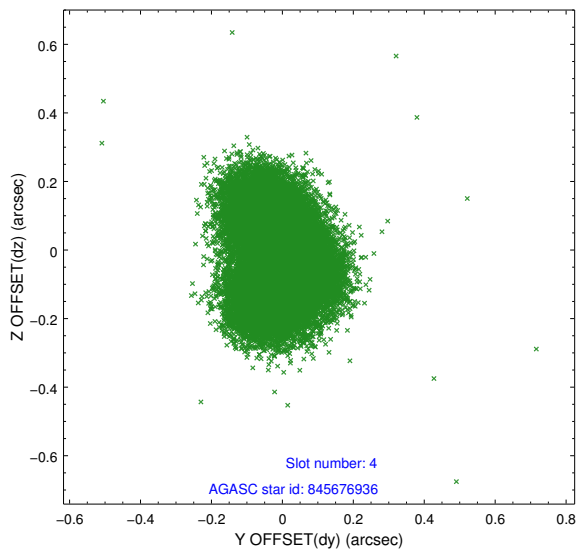
slot	status	id	mag	n_pts	med_dy	med_dz	dr1	dr2	ra	dec	mean_y	mean_z
0	FID	ACIS-I-1	7.23	11286	-0.017	0.041	0.012	0.020	0.000000	0.000000	926.21	-837.76
1	FID	ACIS-I-4	7.15	11282	0.192	0.003	0.011	0.017	0.000000	0.000000	2146.47	1062.00
2	FID	ACIS-I-5	7.22	11284	-0.274	0.026	0.010	0.017	0.000000	0.000000	-1822.04	1059.89
3	GUIDE	845676728	9.32	22548	-0.113	-0.055	0.100	0.162	52.877179	-27.664318	326.63	929.88
4	GUIDE	845676936	9.49	22549	-0.016	-0.002	0.153	0.233	52.843773	-27.880153	-445.83	795.84
5	GUIDE	845683408	9.21	22553	0.187	-0.102	0.087	0.141	52.484531	-28.338862	-2366.19	1379.96
6	GUIDE	845816224	10.23	22541	0.058	0.051	0.150	0.240	53.578992	-28.631005	-2325.04	-2239.01
7	GUIDE	845808968	9.92	22532	-0.113	0.129	0.178	0.292	54.016598	-27.589085	1669.06	-2458.15

2.4 Star Slots

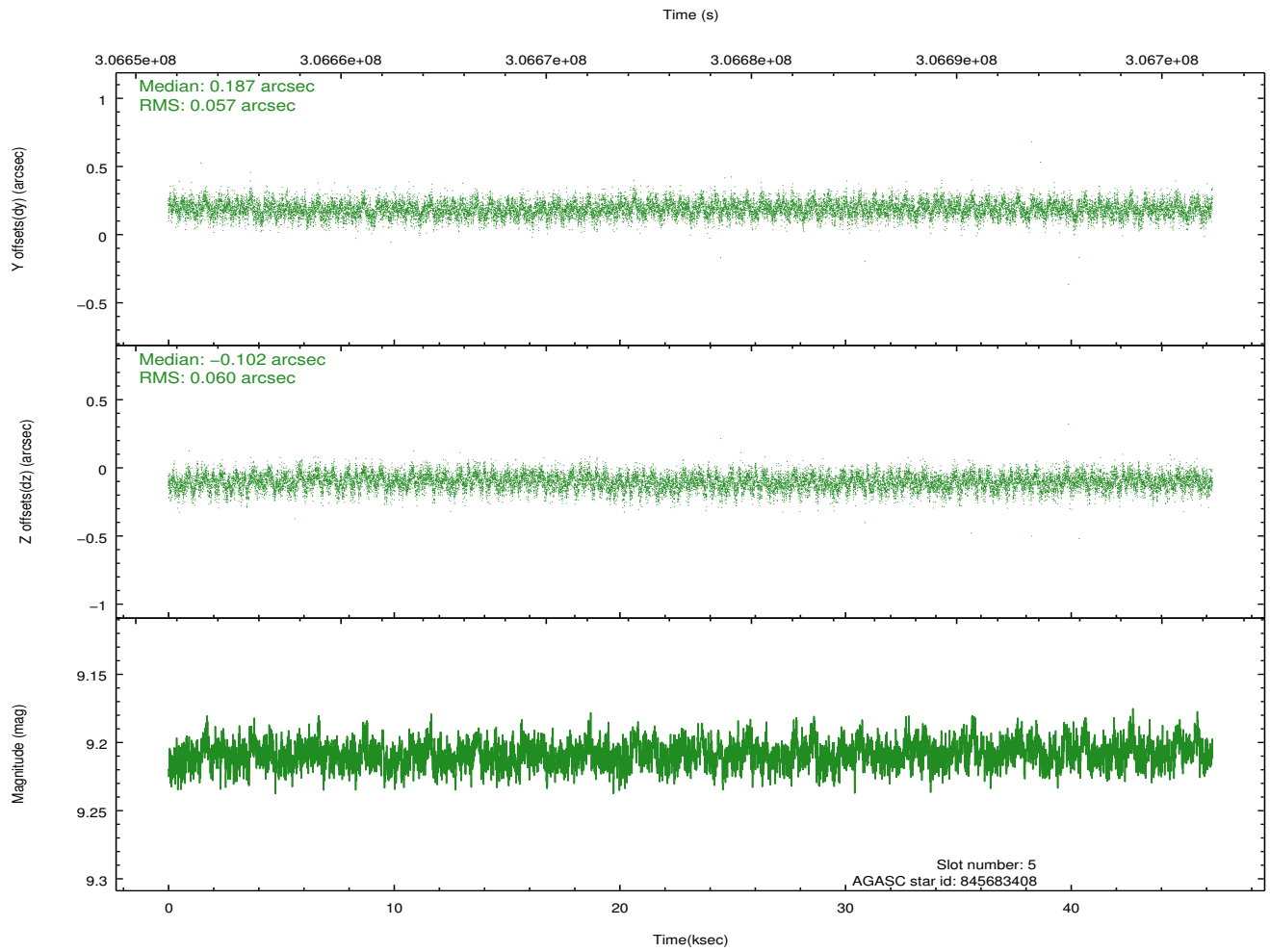
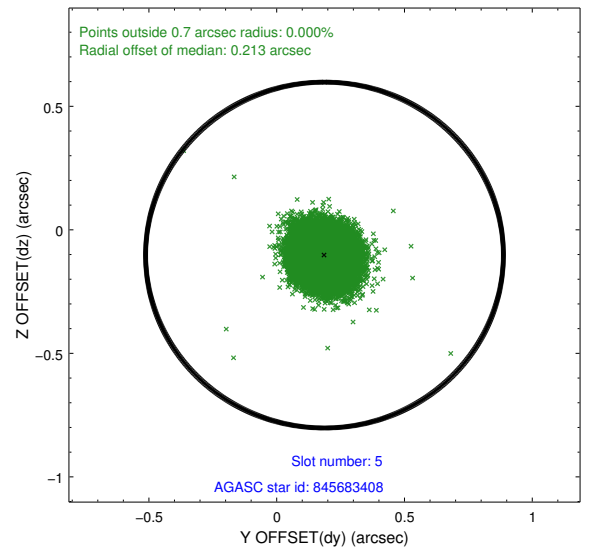
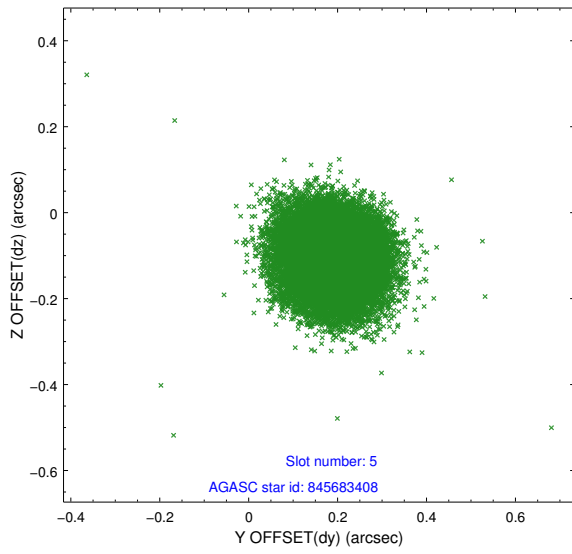
2.4.1 Slot 3



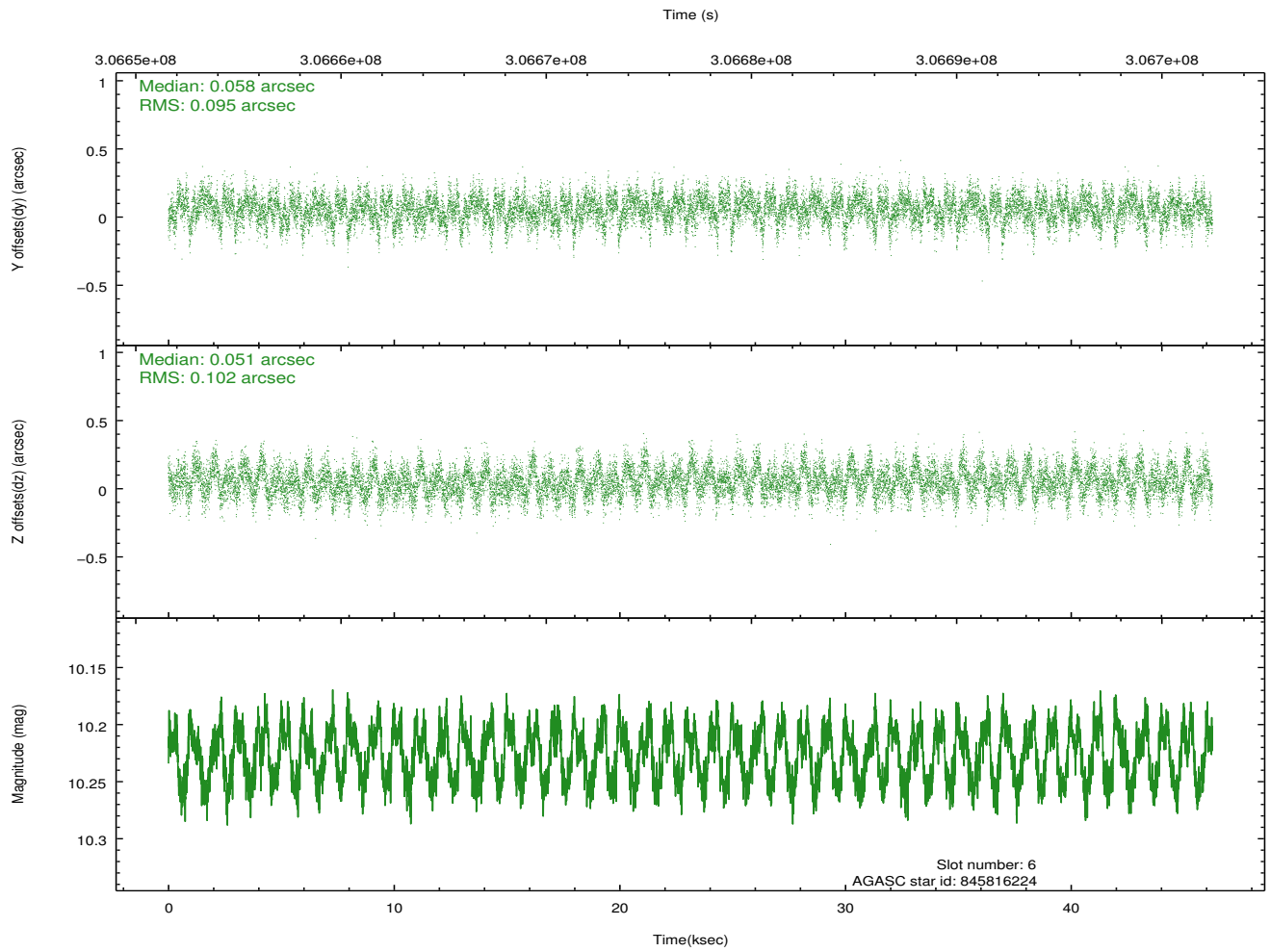
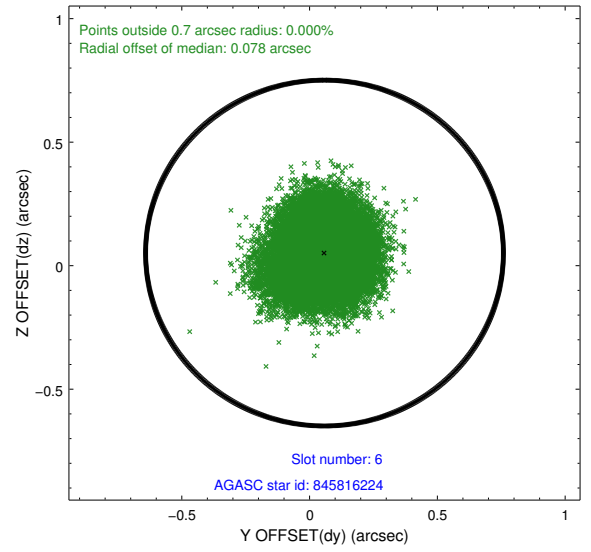
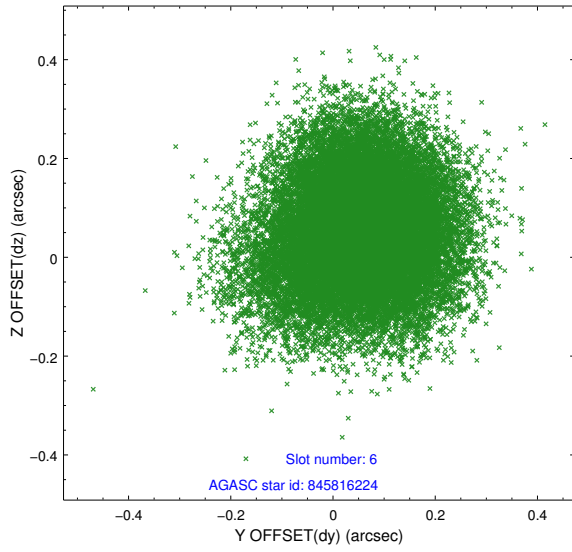
2.4.2 Slot 4



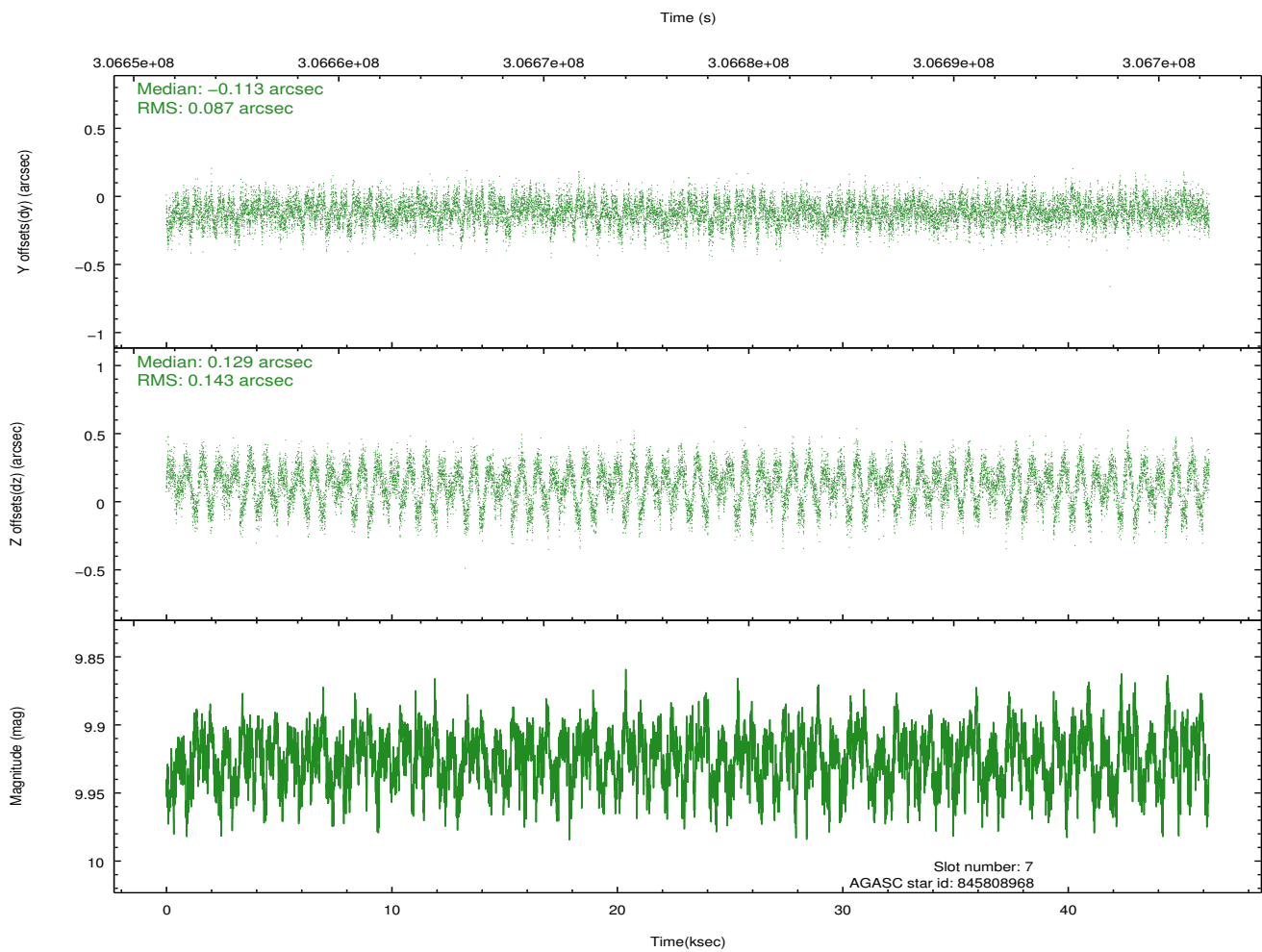
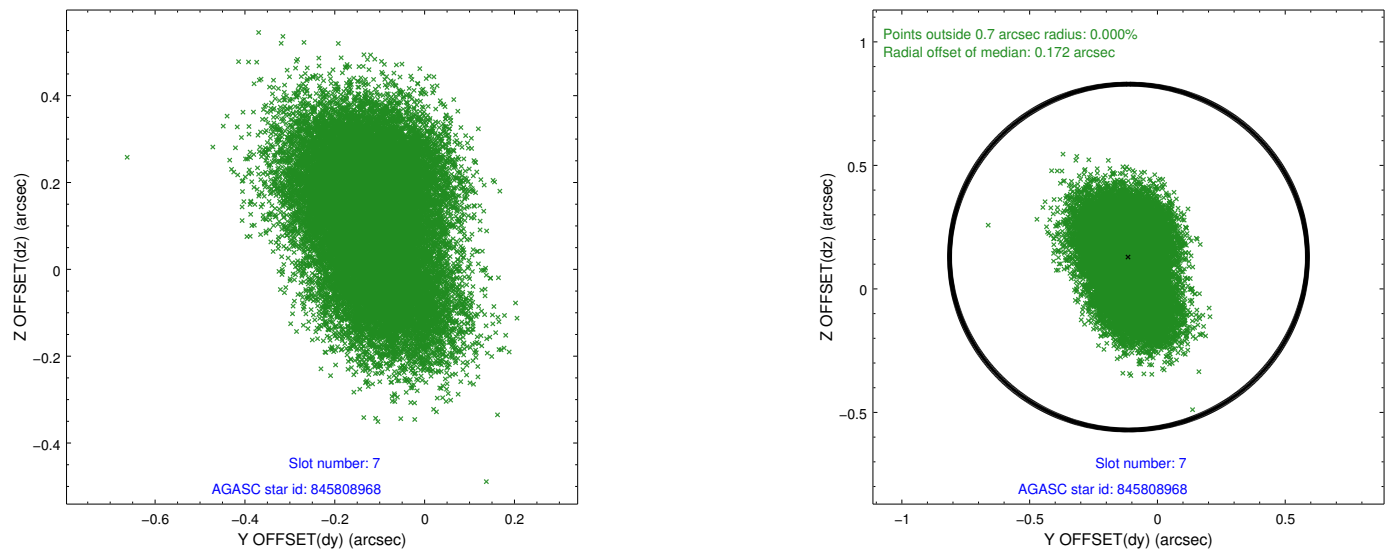
2.4.3 Slot 5



2.4.4 Slot 6

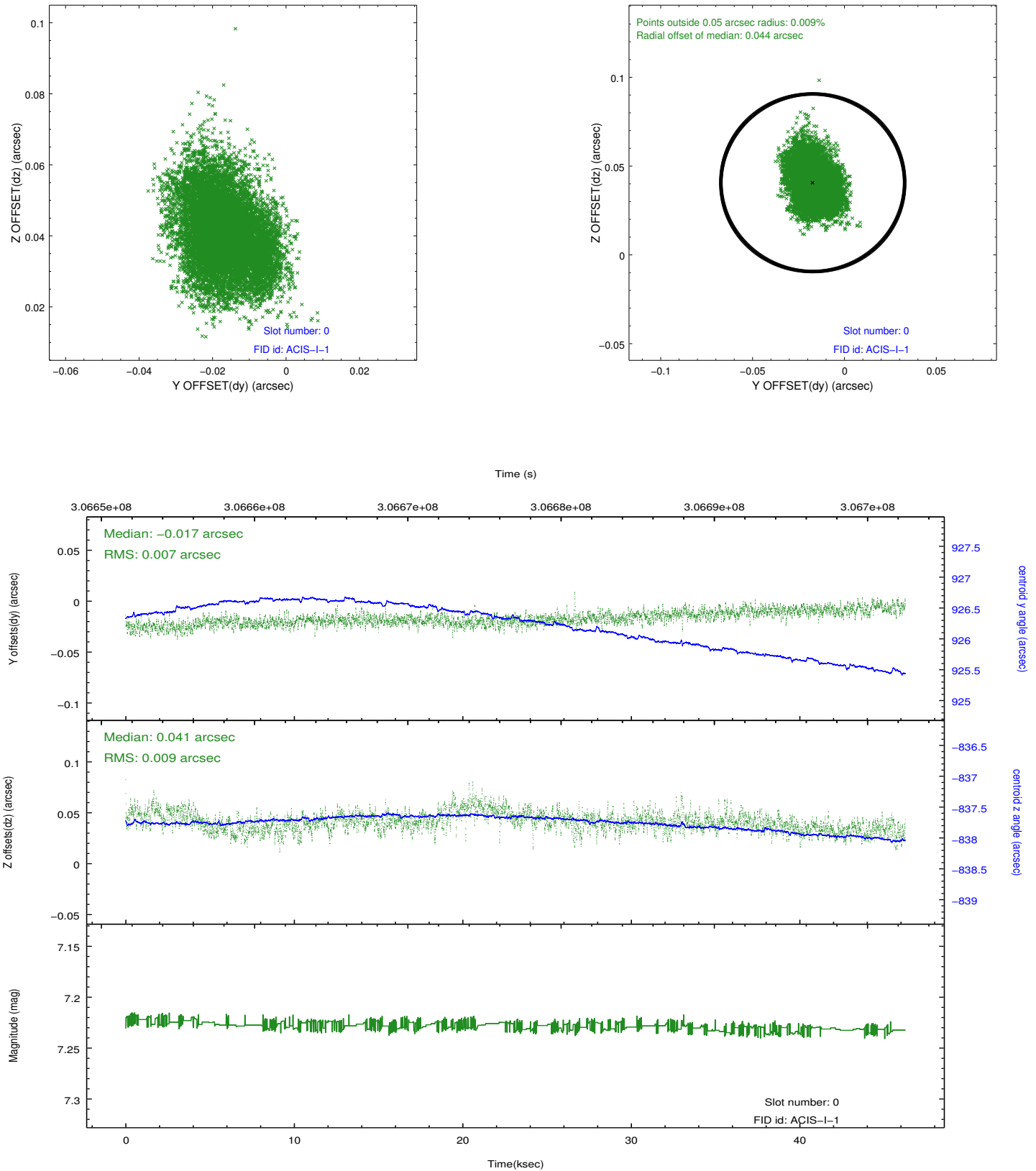


2.4.5 Slot 7

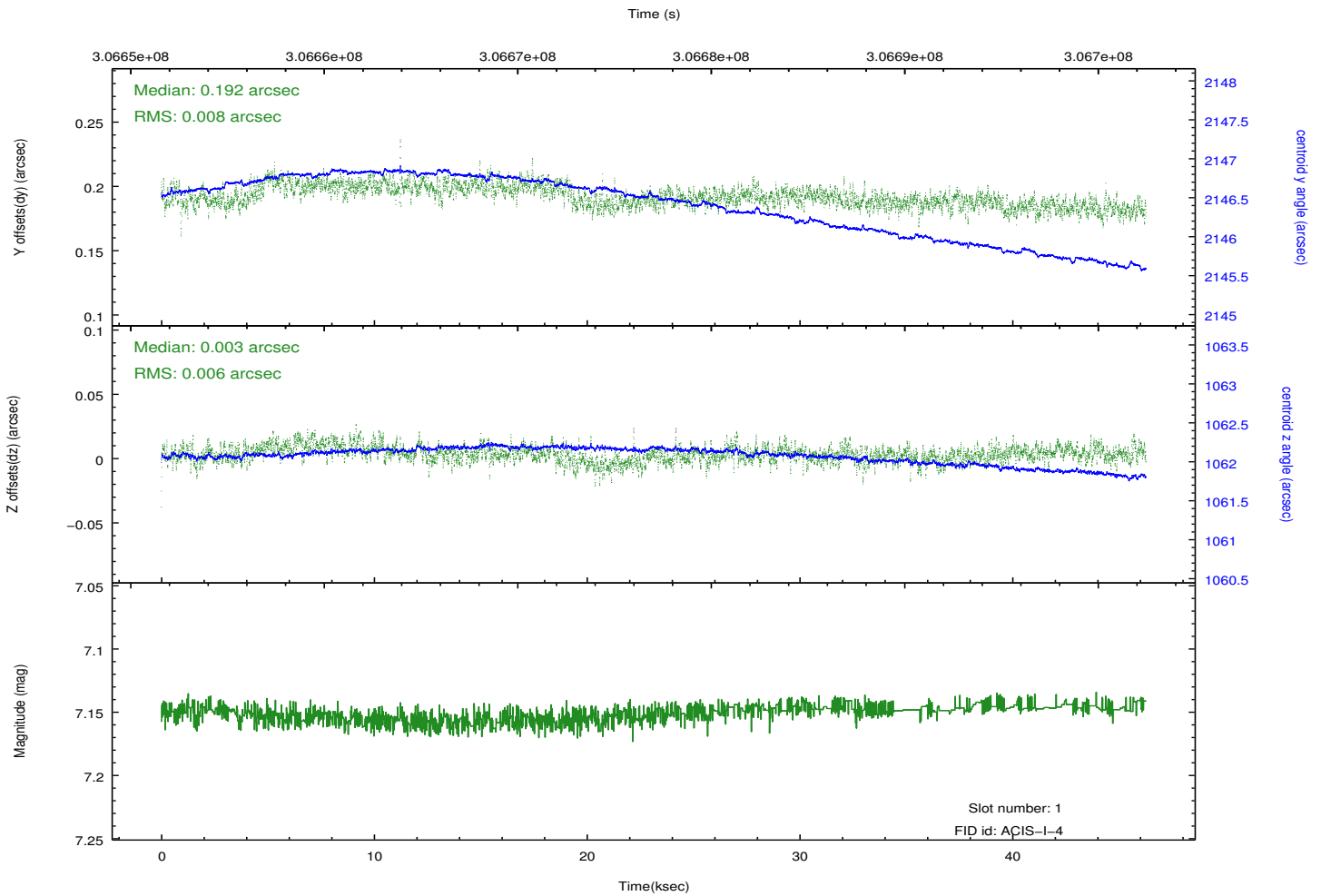
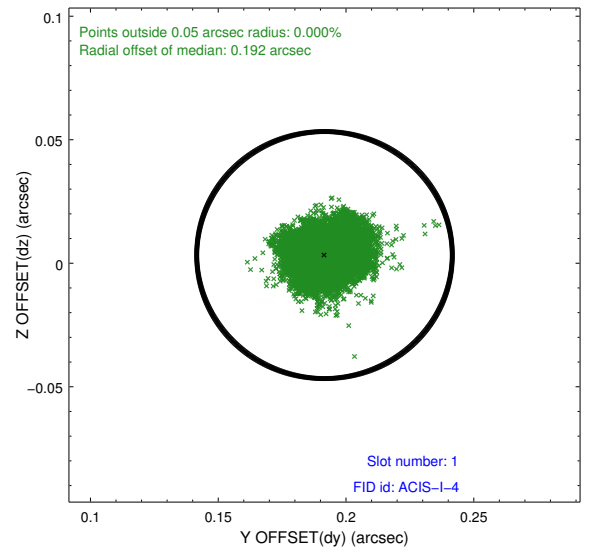
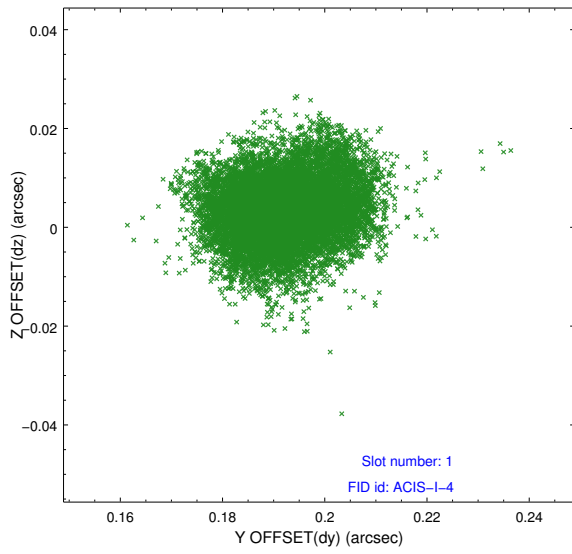


2.5 FID Slots

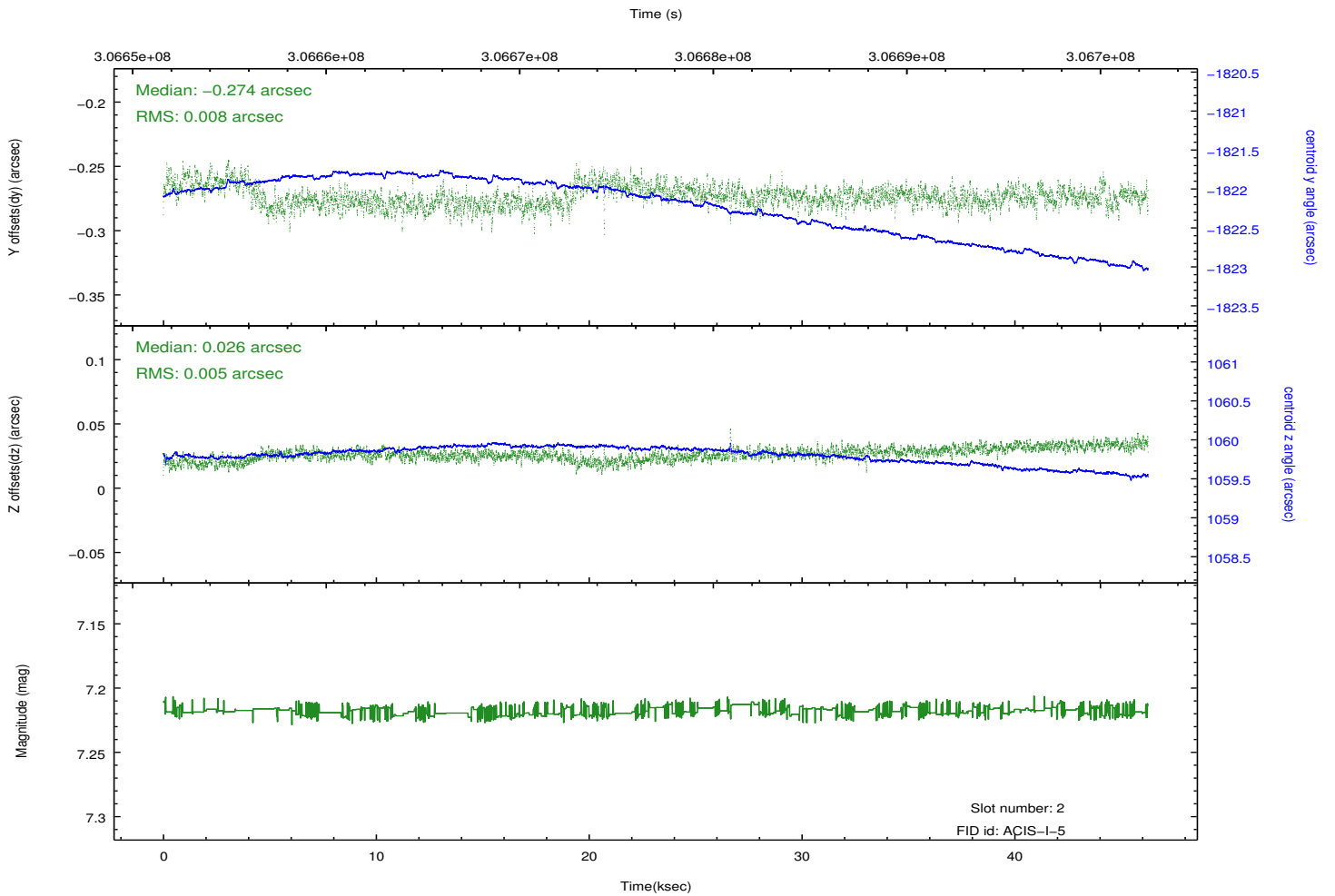
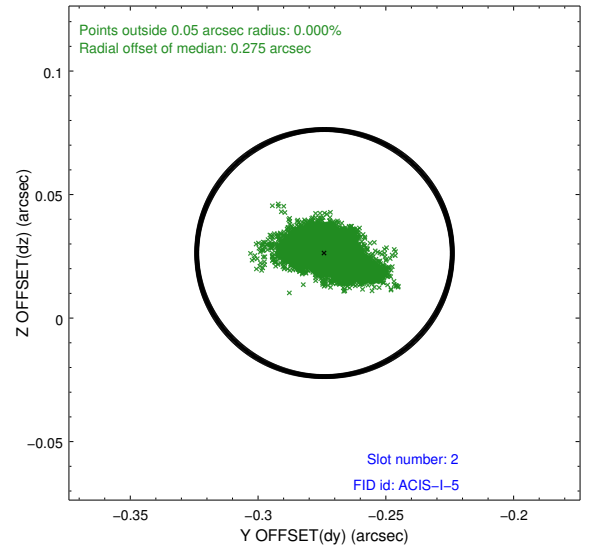
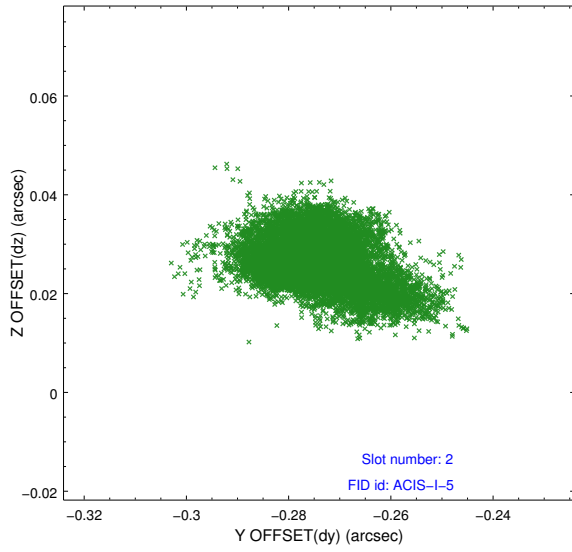
2.5.1 Slot 0



2.5.2 Slot 1



2.5.3 Slot 2



A Summary

A.1 Status

V&V Scientist	Jen Lauer
V&V Date (YYYY-MM-DD)	2012.05.04
V&V Edition	1
V&V Disposition and Status	OK
V&V Charge Time	46.0348774

A.2 Comments