

V&V Reference Report

L2 ASCDS Version : 8.4.4

Observation 8611 - L2 Version 2
Chandra X-Ray Center

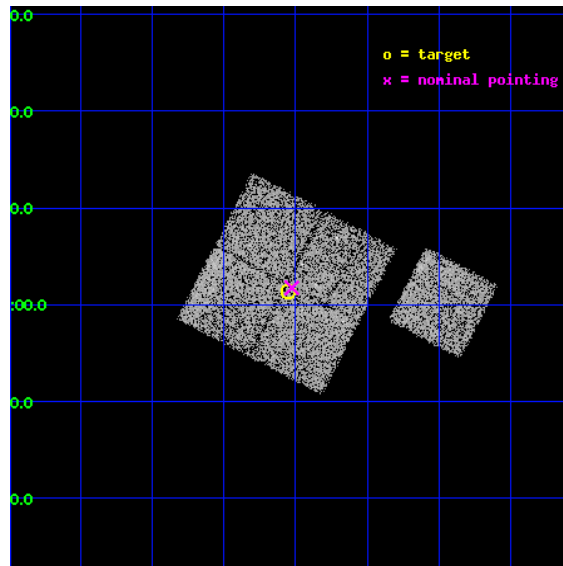
L2 Processing Date : May 19 2012

Contents

1	Front	2
2	OBI	3
2.1	OBI	3
2.1.1	Images	3
2.1.2	Bias	3
2.1.3	Parameters	4
2.1.4	Events	4
2.2	Compared Parameters	5
2.3	Aspect	6
2.4	Star Slots	9
2.4.1	Slot 3	9
2.4.2	Slot 4	10
2.4.3	Slot 5	11
2.4.4	Slot 6	12
2.4.5	Slot 7	13
2.5	FID Slots	14
2.5.1	Slot 0	14
2.5.2	Slot 1	15
2.5.3	Slot 2	16
A	Summary	17
A.1	Status	17
A.2	Comments	17

1 Front

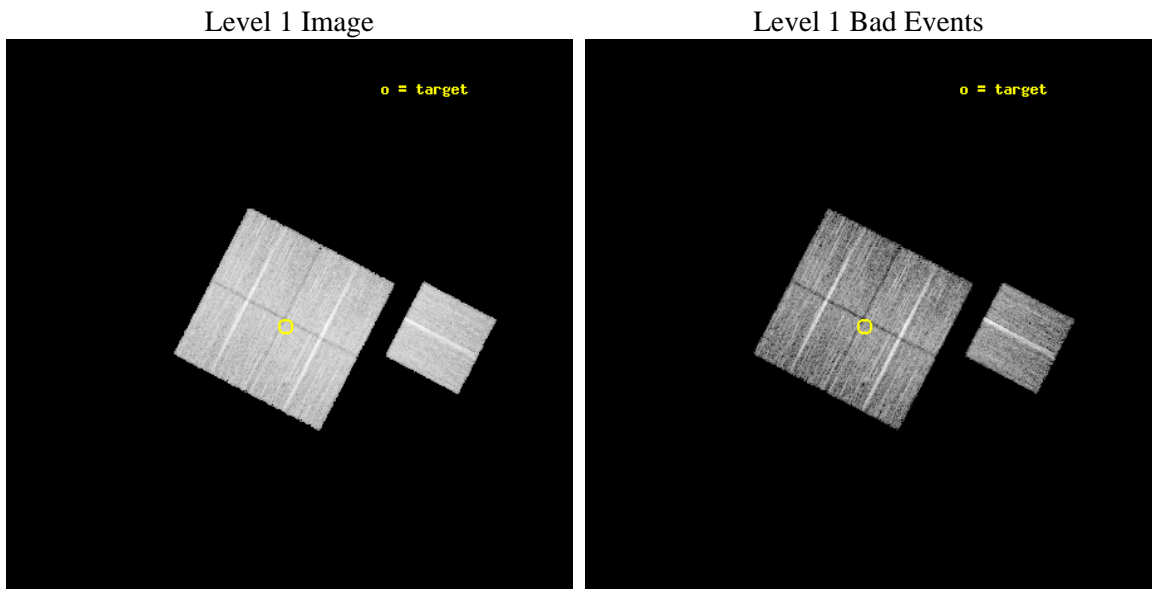
seq_num	900748	Sequence number
obs_id	8611	Observation id
title	Chandra Observations of the DEEP2 Fields	Proposal title
observer	Dr. Stephen Murray	Principal investigator
object	DEEP2 Field 3	Source name
dtcycle	0	
cycle	P	events from which exps? Prim/Second/Both
ra_targ	352.01198	Observer's specified target RA [deg]
dec_targ	0.023391	Observer's specified target Dec [deg]
ra_nom	352.00631376325	Nominal RA [deg]
dec_nom	0.029131289513836	Nominal Dec [deg]
roll_nom	117.50874562919	Nominal Roll [deg]
revision	2	Processing version of data
ontime	8949.6180682182	Sum of GTIs [s]
livetime	8832.684719544	Livetime [s]
ontime0	8952.7590685487	Sum of GTIs [s]
ontime1	8955.9000688791	Sum of GTIs [s]
ontime2	8952.7590586543	Sum of GTIs [s]
ontime3	8949.6180682182	Sum of GTIs [s]
ontime6	8955.9000688791	Sum of GTIs [s]
l2events	30984	Number of level 2 events



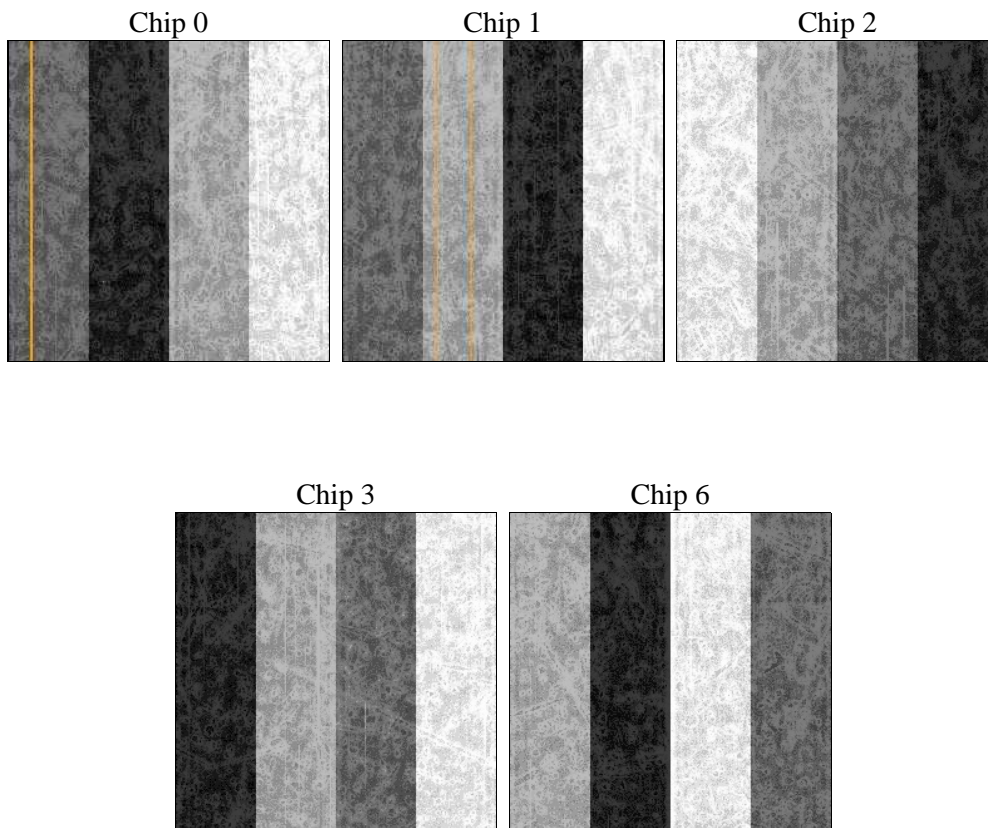
2 OBI

2.1 OBI

2.1.1 Images



2.1.2 Bias



2.1.3 Parameters

obi_num	0	Obi number	sched_exp_time	8771.000000	[s] Scheduled observation exposure time
ascdsver	8.4.4	Processing system revision	ontime	8949.6180682182	Sum of GTIs [s]
caldsver	4.4.9	 	ontime0	8952.7590685487	Sum of GTIs [s]
date	2012-05-19T01:54:00	Date and time of file creation	ontime1	8955.9000688791	Sum of GTIs [s]
revision	2	Processing version of data	ontime2	8952.7590586543	Sum of GTIs [s]
			ontime3	8949.6180682182	Sum of GTIs [s]
			ontime6	8955.9000688791	Sum of GTIs [s]
			l1events	379373	Number of level 1 events

2.1.4 Events

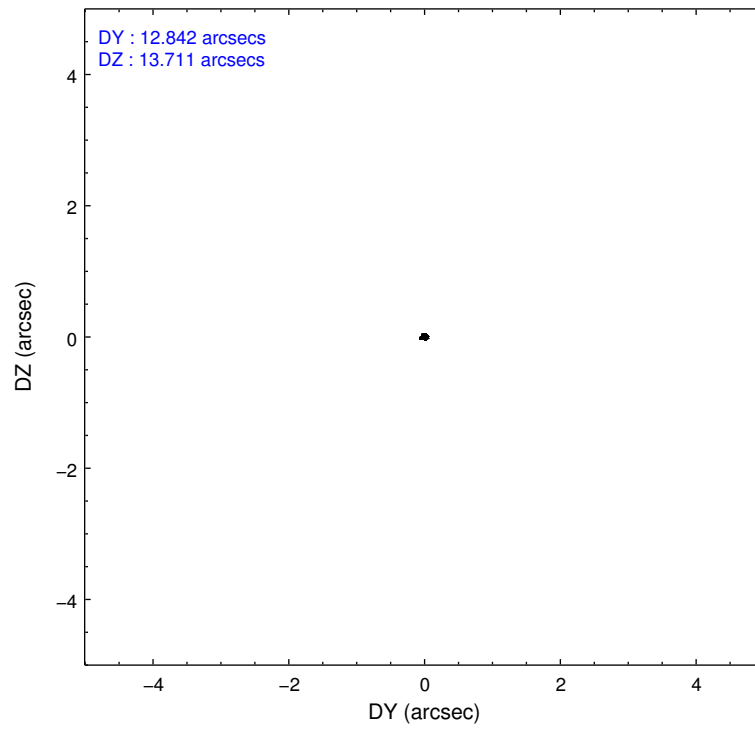
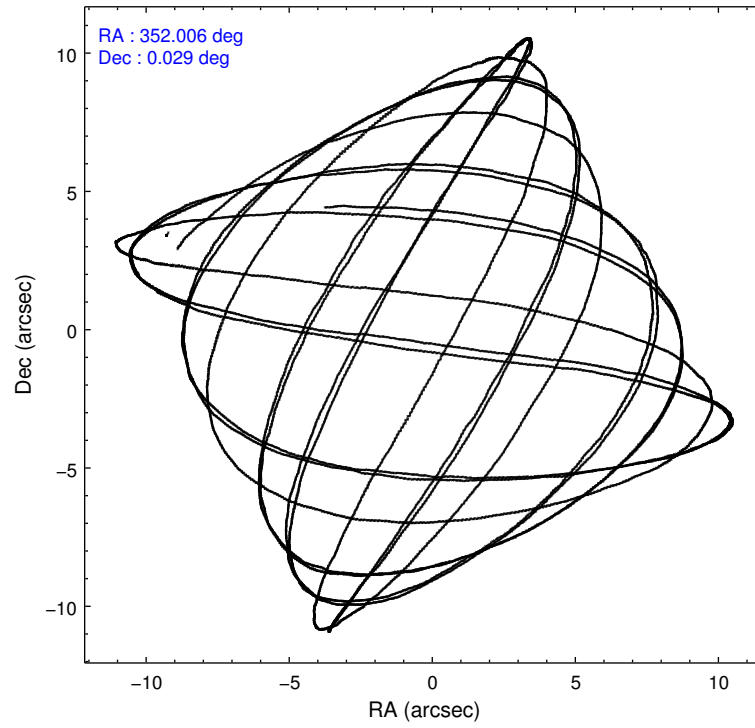
	ccd 0	ccd 1	ccd 2	ccd 3	ccd 6
level 1 events	72768	71333	81847	76865	76560
rejected events	65437	63133	74536	69964	68983
rejected %	89%	88%	91%	91%	90%

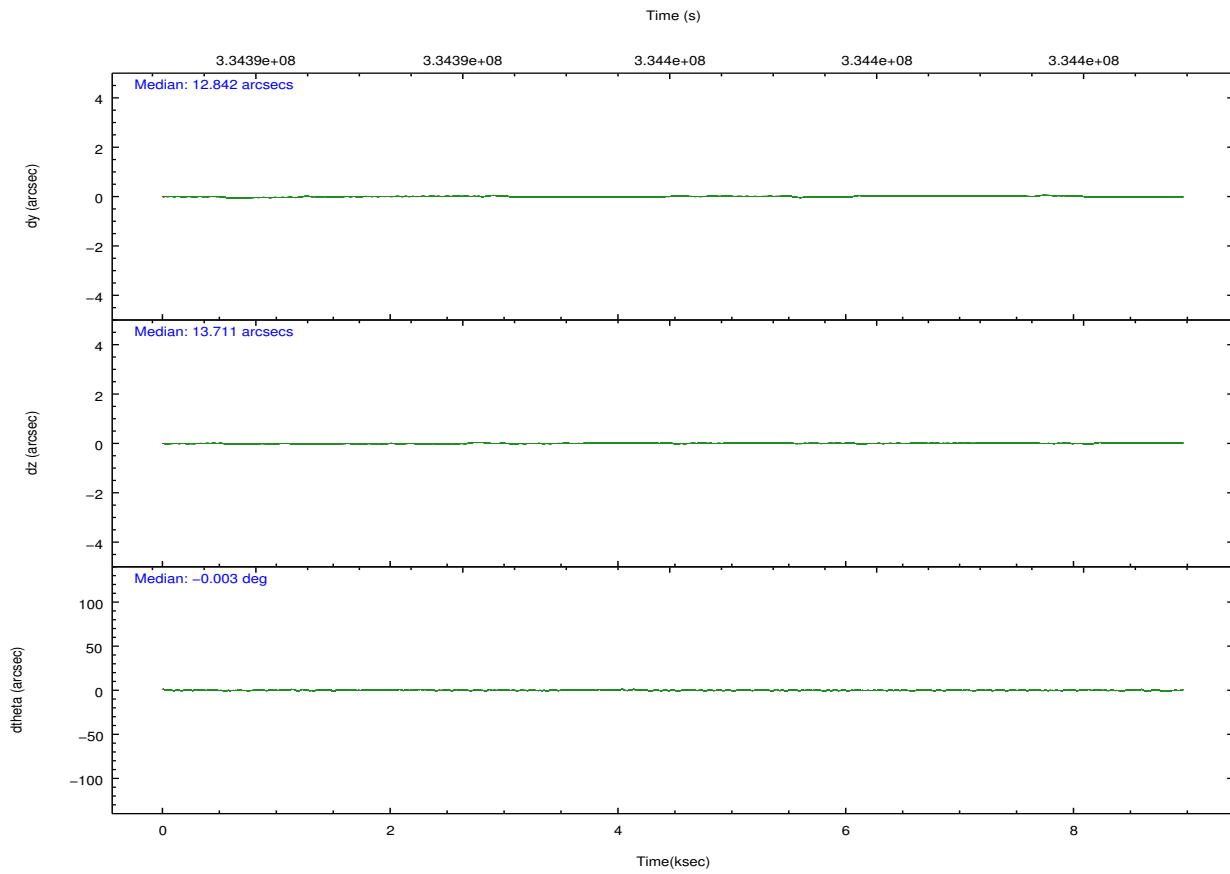
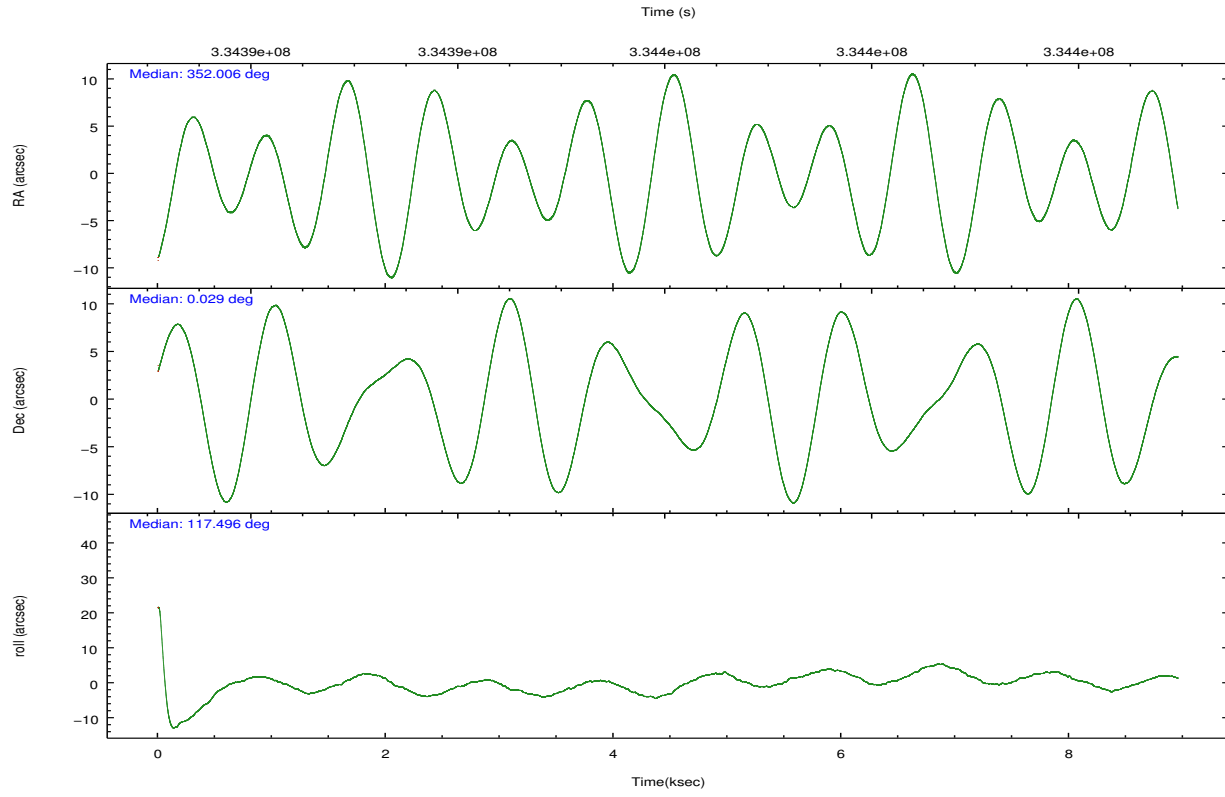
	ccd 0	ccd 1	ccd 2	ccd 3	ccd 6
grade 0 events	2639	3009	2733	2468	2664
	3%	4%	3%	3%	3%
grade 1 events	34	43	47	47	35
	0%	0%	0%	0%	0%
grade 2 events	1826	1940	1789	1576	1742
	2%	2%	2%	2%	2%
grade 3 events	806	902	860	833	858
	1%	1%	1%	1%	1%
grade 4 events	784	894	810	842	844
	1%	1%	0%	1%	1%
grade 5 events	2718	2991	2434	3104	3093
	3%	4%	2%	4%	4%
grade 6 events	1551	1782	1393	1433	1741
	2%	2%	1%	1%	2%
grade 7 events	62410	59772	71781	66562	65583
	85%	83%	87%	86%	85%

2.2 Compared Parameters

Parameter	Planned	Actual	Parameter	Planned	Actual
Instrument	ACIS	ACIS	Obspar format version number	7	7
Detector	ACIS-01236	ACIS-01236	Obspar file type	PREDICTED	ACTUAL
Grating	NONE	NONE	Obspar update status	NONE	UPDATED
Data mode	VFAINT	VFAINT	CCD I0 on	Y	Y
Observation mode	POINTING	POINTING	CCD I1 on	Y	Y
[deg] Pointing RA	352.029542	352.0063137632545	CCD I2 on	Y	Y
[deg] Pointing Dec	0.014449	0.02913128951383554	CCD I3 on	Y	Y
[deg] Pointing Roll	117.299996	117.5087456291873	CCD S0 on	N	N
[mm] SIM focus pos	-0.782348	-0.7809083437167272	CCD S1 on	N	N
[mm] SIM defocus	0	0.001439871863259334	CCD S2 on	O1	Y
[mm] SIM translation stage pos	-233.592463	-233.5874344608287	CCD S3 on	N	N
[mm] SIM translation stage offset	0	-0.005018542100998502	CCD S4 on	N	N
[s] Observation start time (MET)	334391743.184000	334391367.57156	CCD S5 on	N	N
Observation start date	2008-08-06T06:34:38	2008-08-06T06:29:27	Number of optional ACIS chips dropped	0	0
[s] Observation end time (MET)	334400514.184000	334400648.43451	On-chip summing requested	N	N
Observation end date	2008-08-06T09:00:49	2008-08-06T09:04:08	Subarray requested	NONE	NONE
Read mode	TIMED	TIMED	Alternating exposures requested	N	N
			[s] Primary exposure time	0.000000	3.1

2.3 Aspect



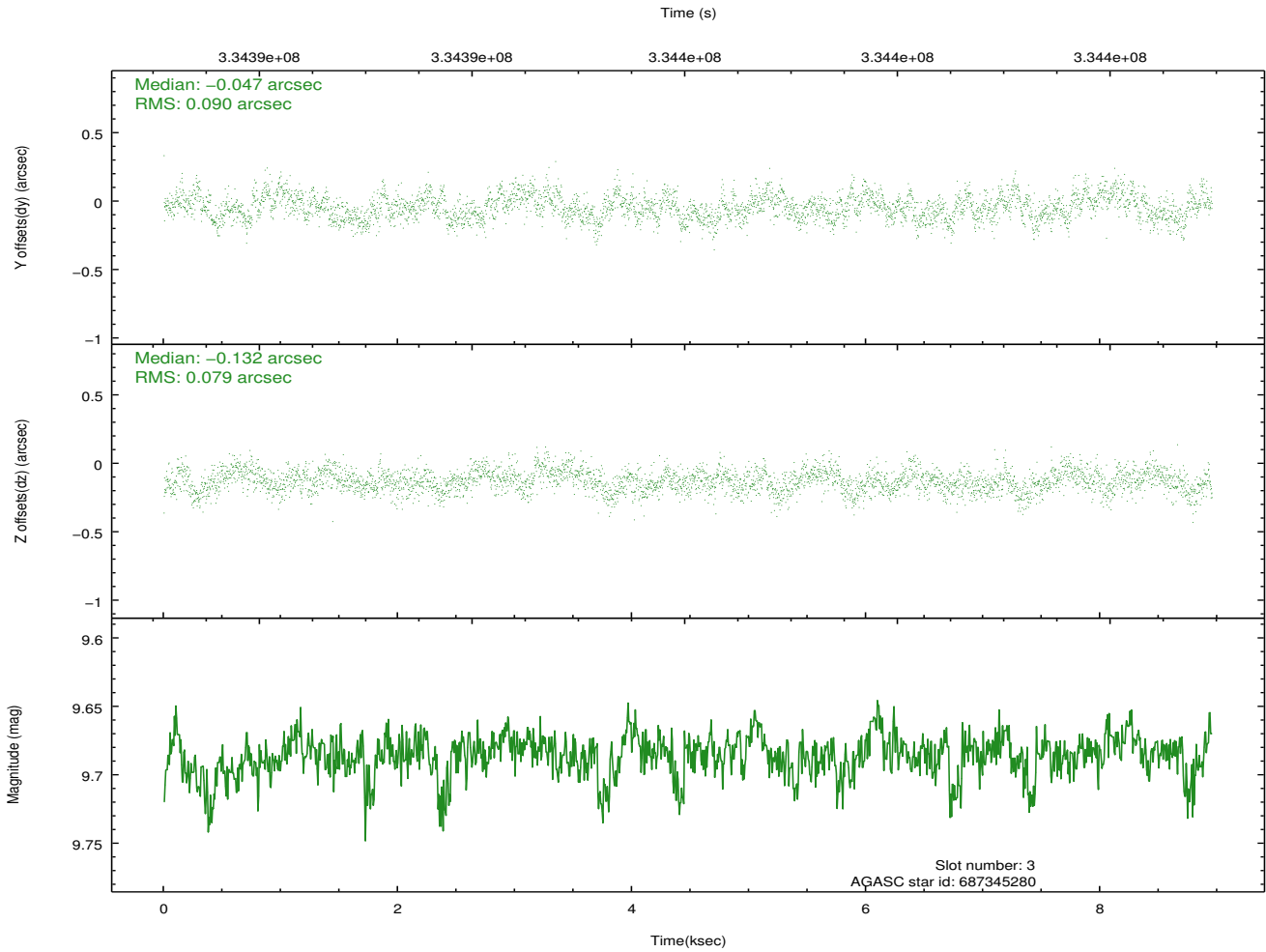
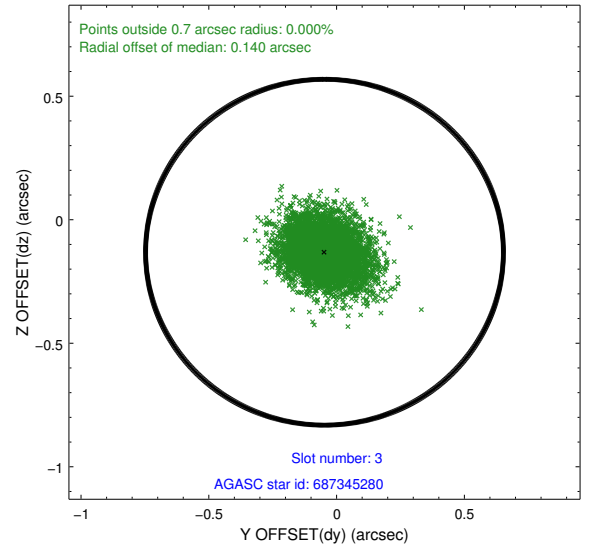
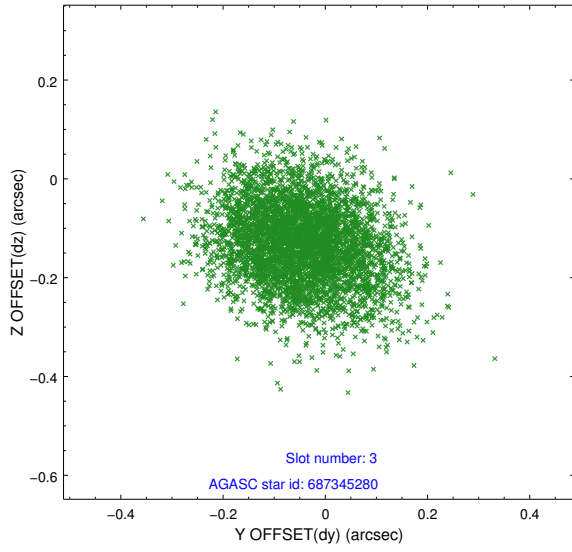


Slot Statistics

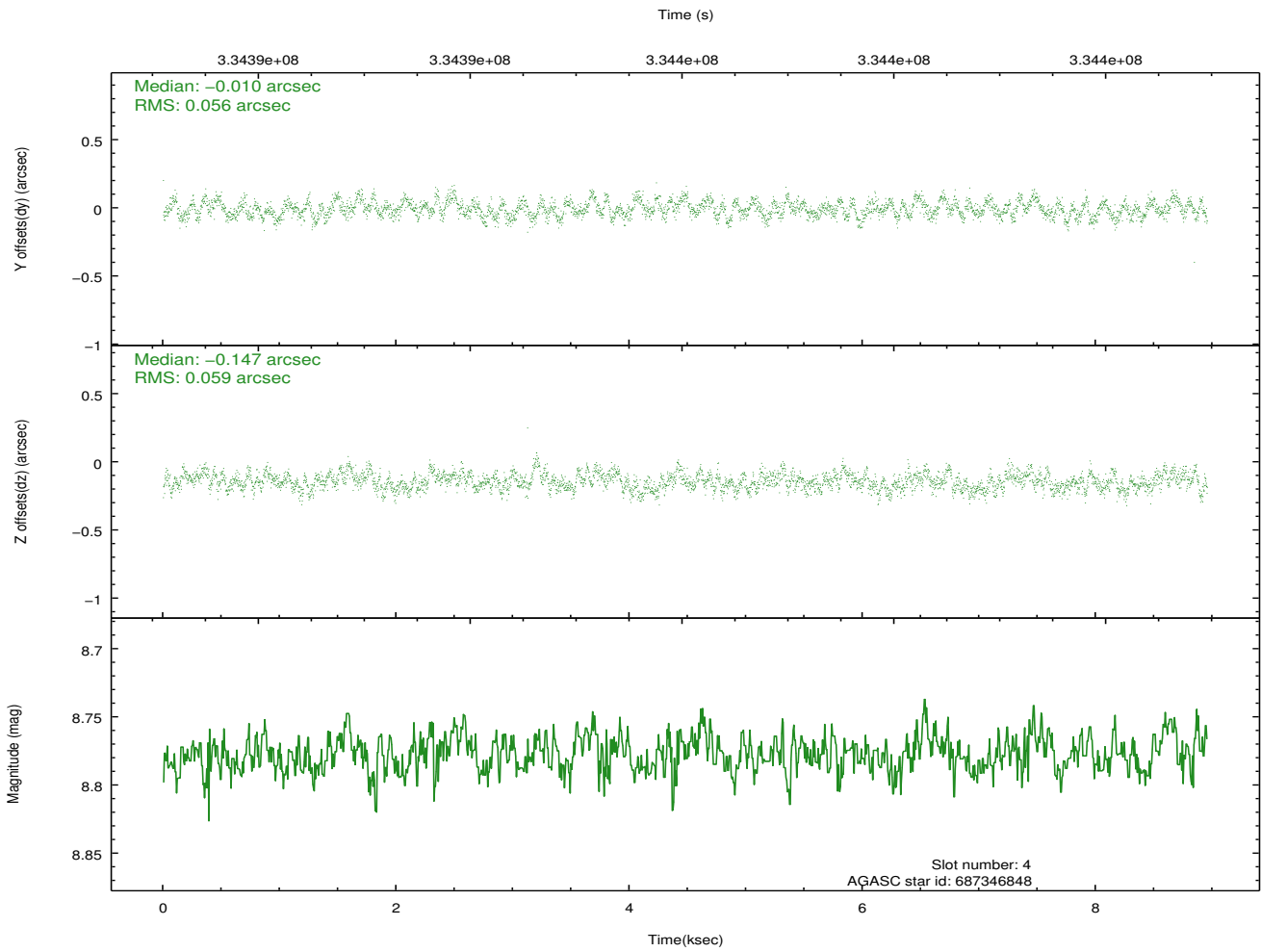
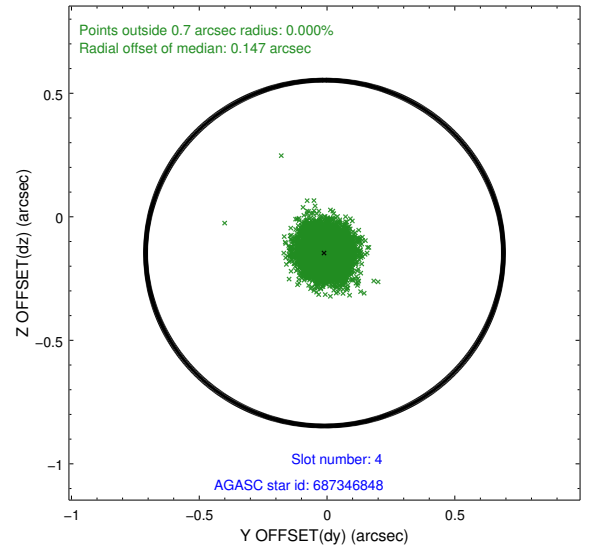
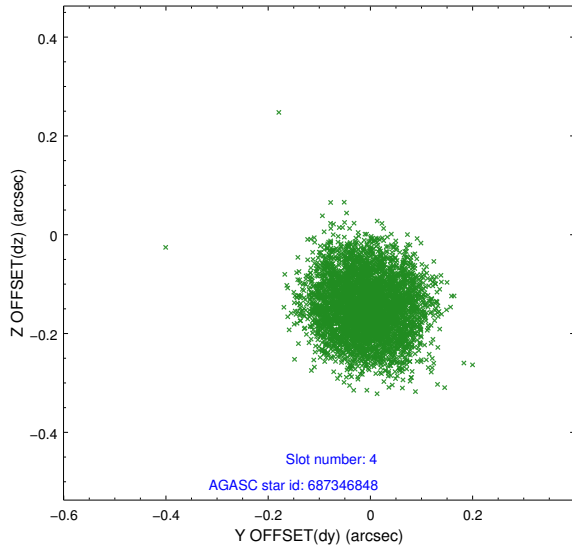
slot	status	id	mag	n_pts	med_dy	med_dz	dr1	dr2	ra	dec	mean_y	mean_z
0	FID	ACIS-I-1	7.07	2185	0.013	0.034	0.008	0.015	0.000000	0.000000	926.70	-837.23
1	FID	ACIS-I-5	7.05	2185	-0.179	0.034	0.007	0.013	0.000000	0.000000	-1821.28	1059.92
2	FID	ACIS-I-6	7.06	2185	0.074	0.002	0.007	0.012	0.000000	0.000000	391.62	1705.11
3	GUIDE	687345280	9.69	4367	-0.047	-0.132	0.126	0.203	351.784155	-0.815361	-2249.81	2155.06
4	GUIDE	687346848	8.78	4366	-0.010	-0.147	0.089	0.134	351.544424	-0.463235	-728.00	2341.33
5	GUIDE	687347656	9.60	4367	-0.004	0.223	0.108	0.169	352.228641	-0.041094	-506.20	-543.80
6	GUIDE	688265896	9.17	4295	-0.003	0.316	0.086	0.136	352.587516	-0.177872	-1536.22	-1467.16
7	GUIDE	687348152	9.46	4359	0.060	-0.255	0.109	0.178	351.554637	-0.505254	-878.89	2377.27

2.4 Star Slots

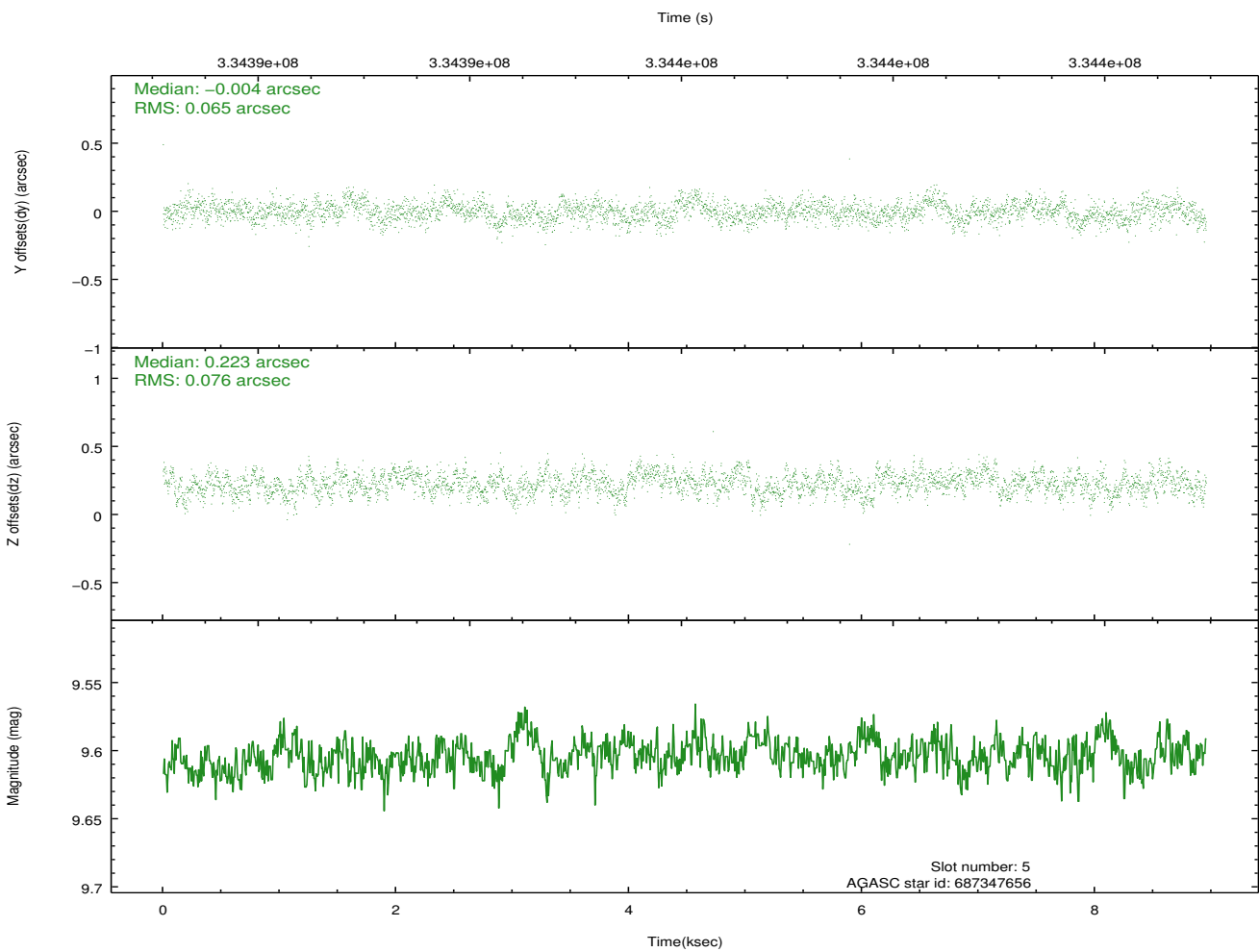
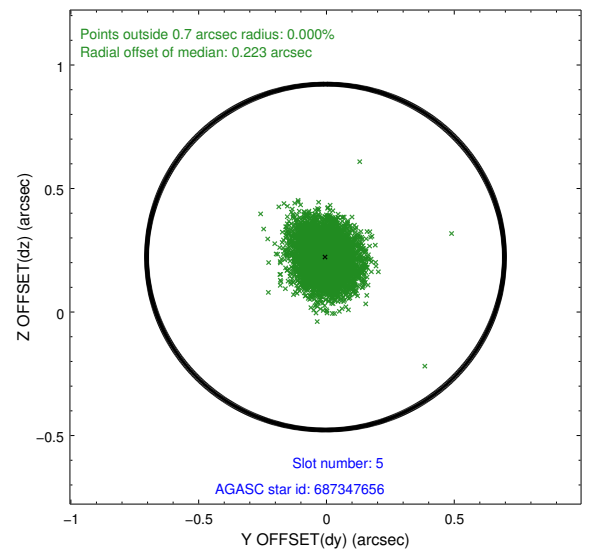
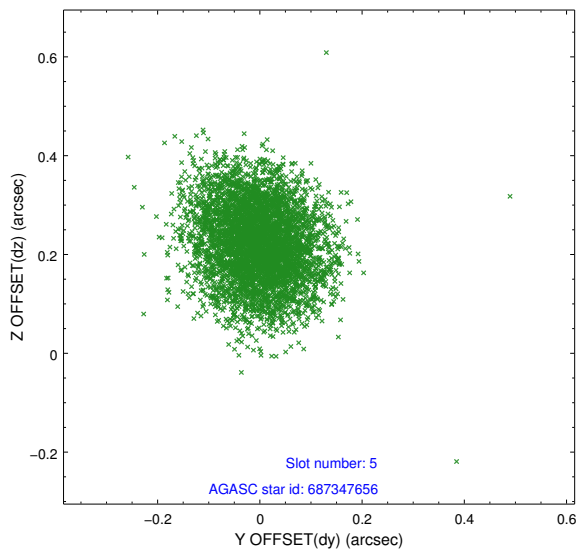
2.4.1 Slot 3



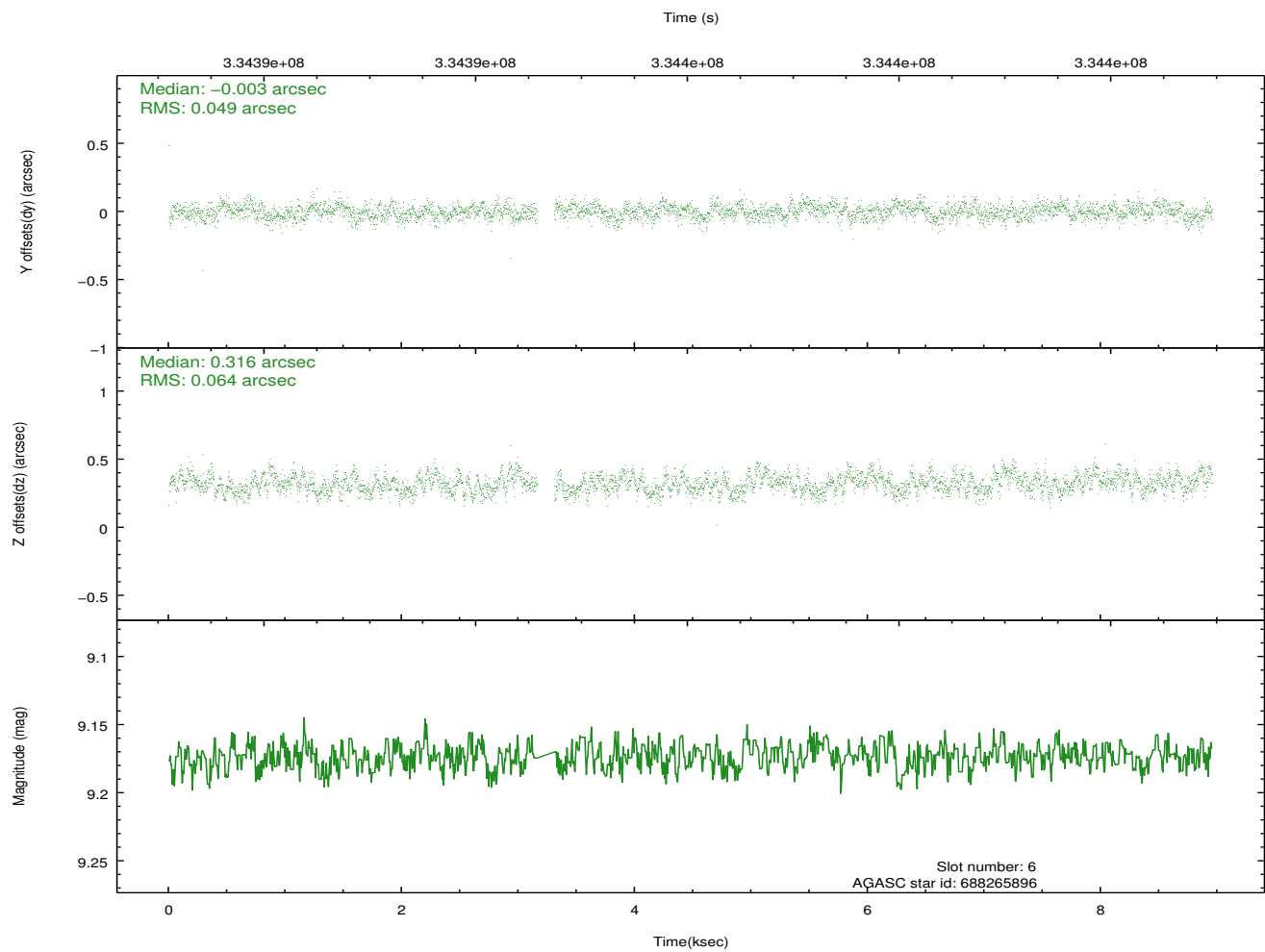
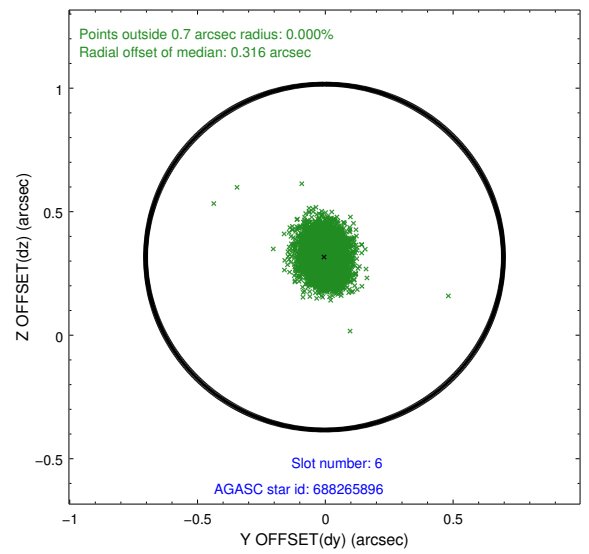
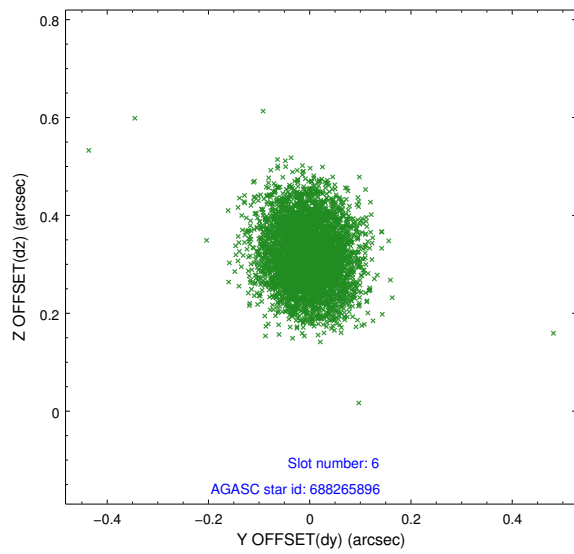
2.4.2 Slot 4



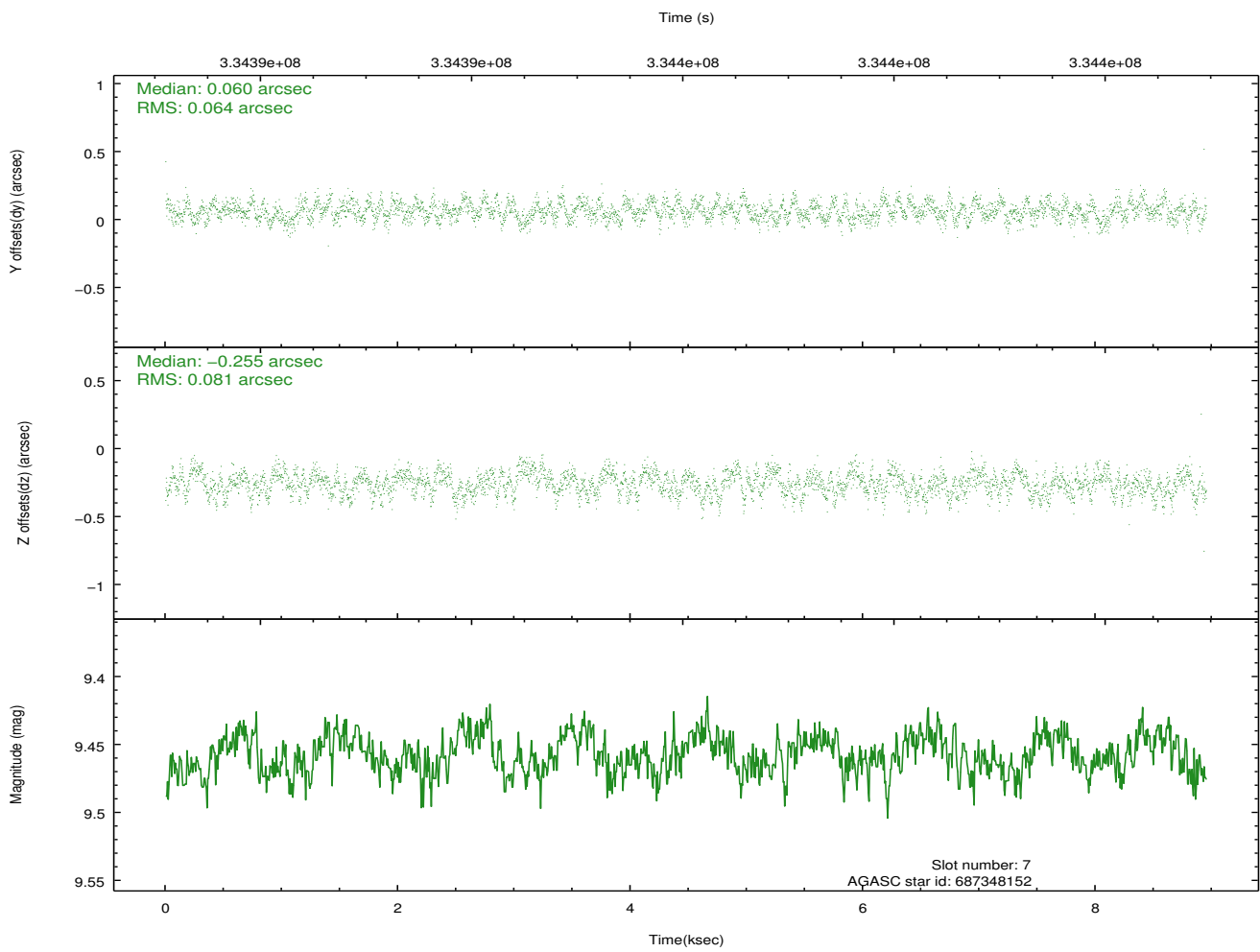
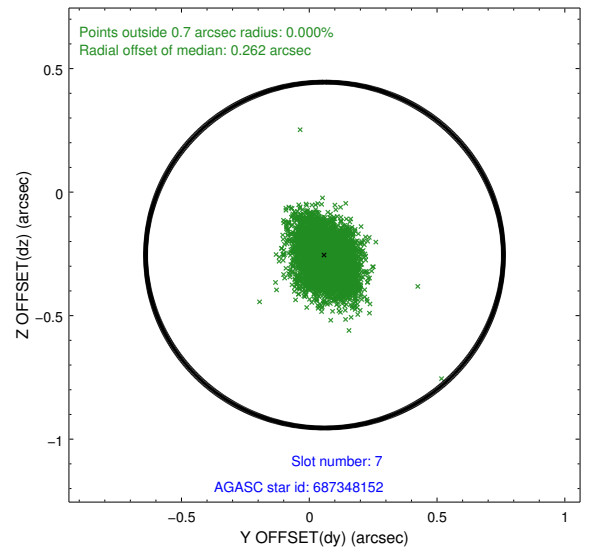
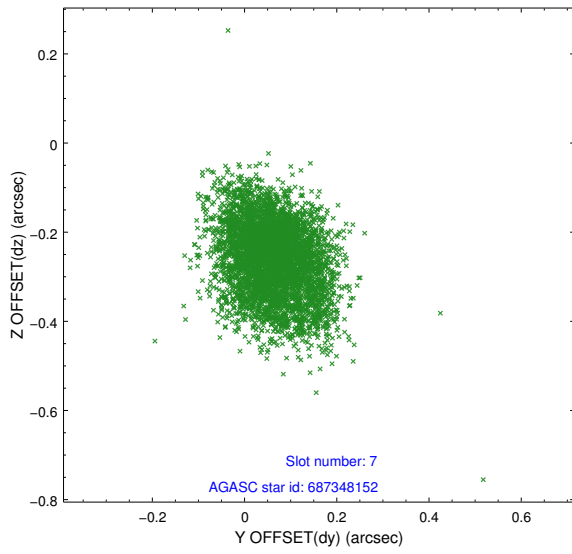
2.4.3 Slot 5



2.4.4 Slot 6

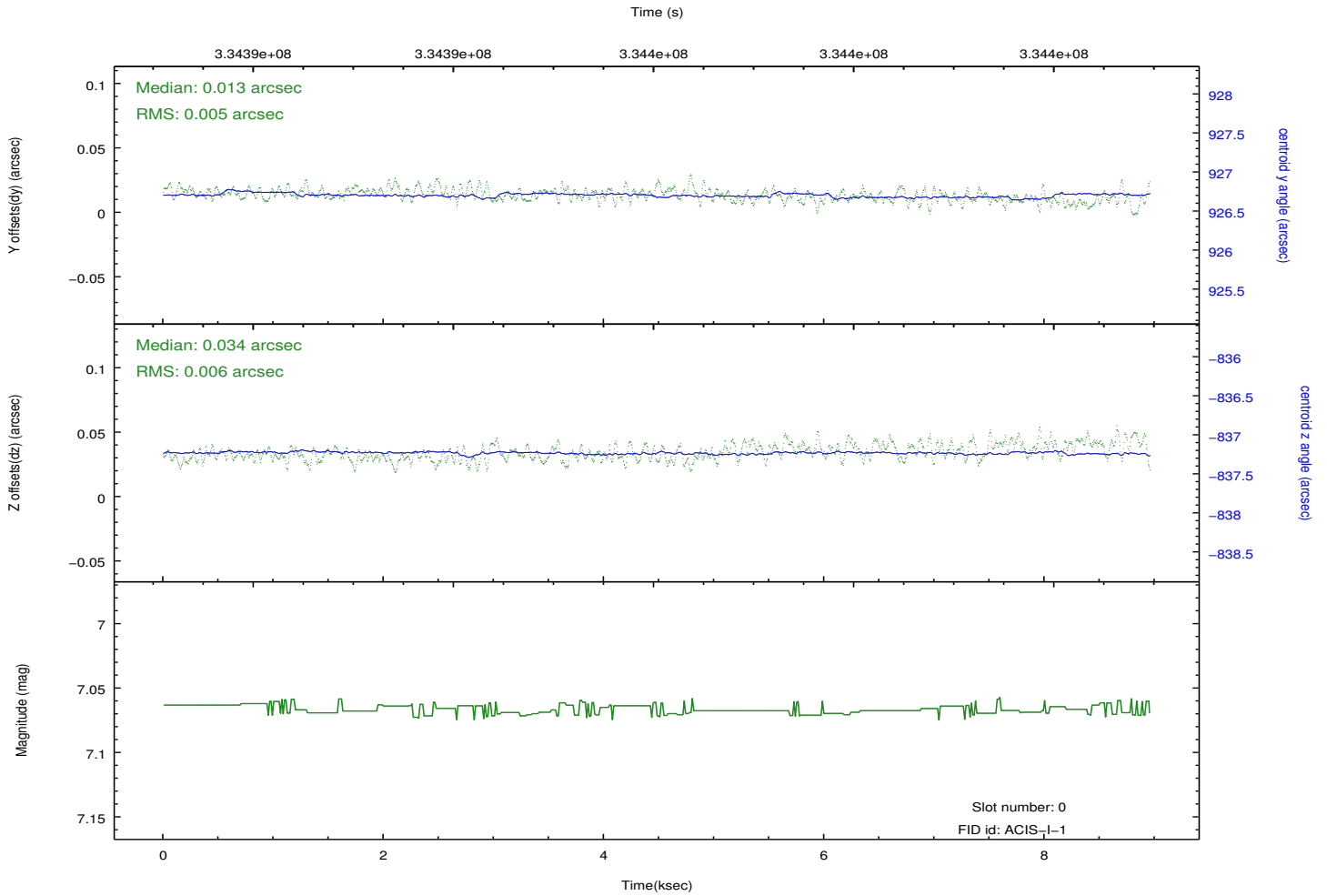
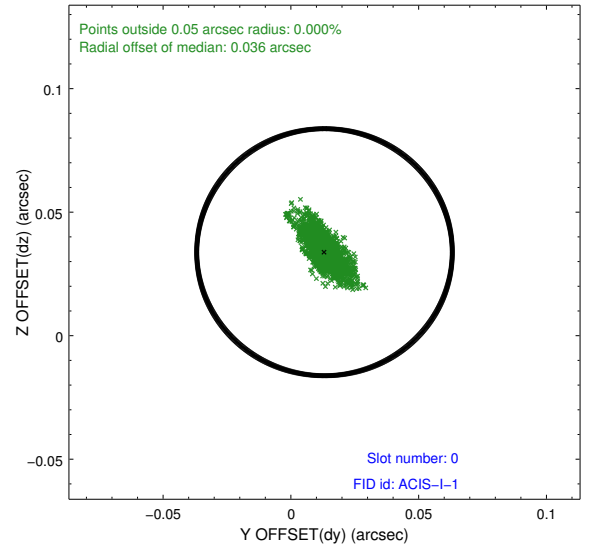
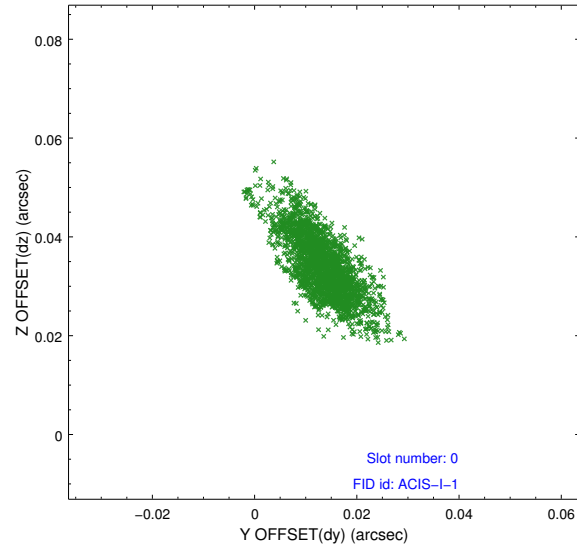


2.4.5 Slot 7

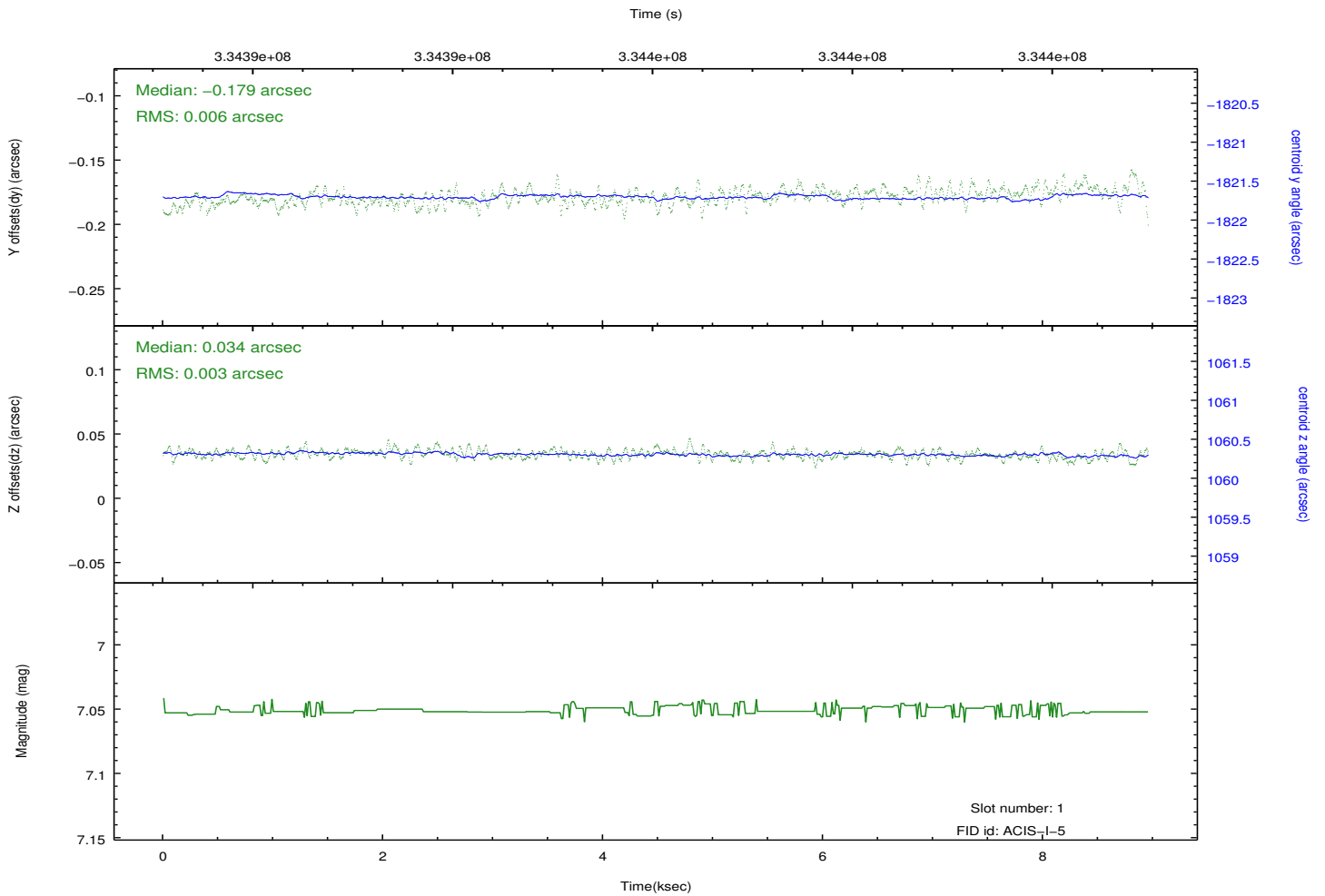
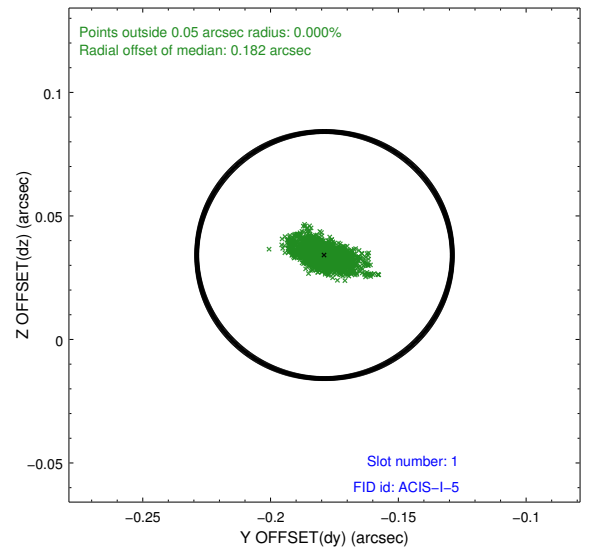
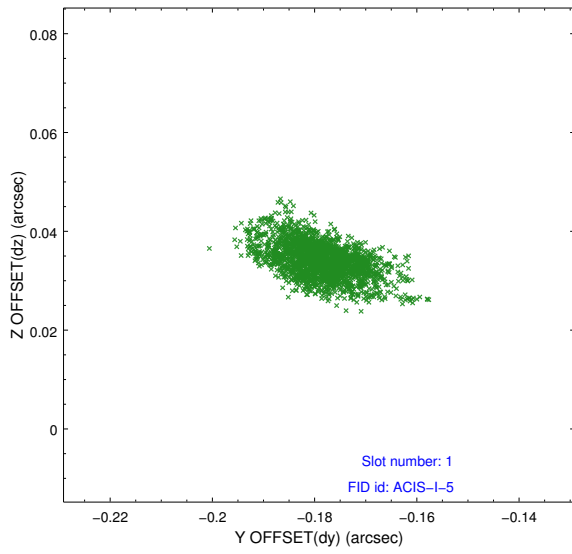


2.5 FID Slots

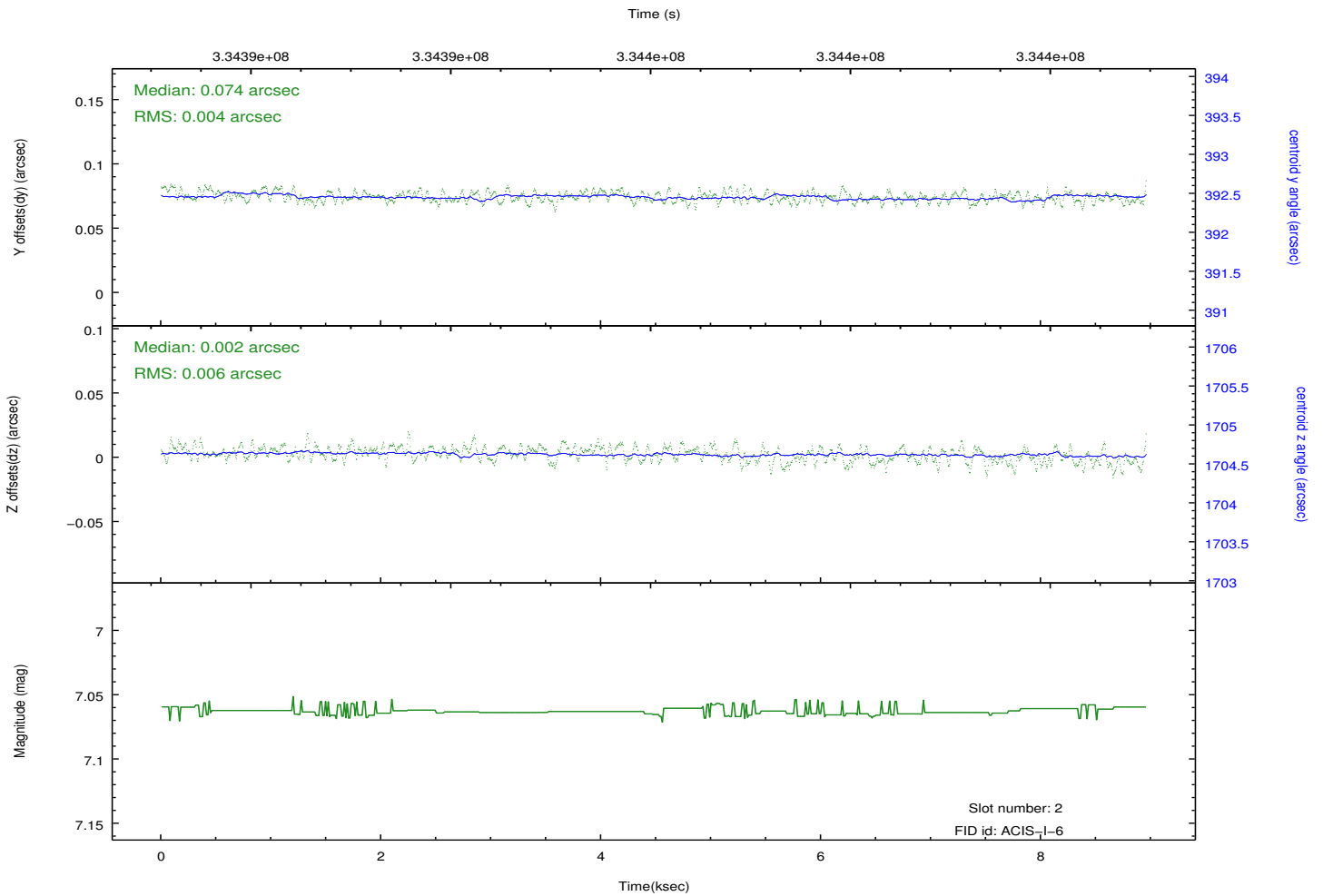
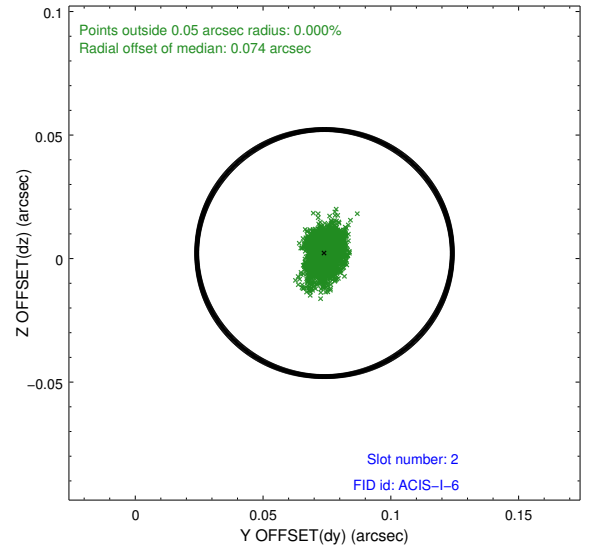
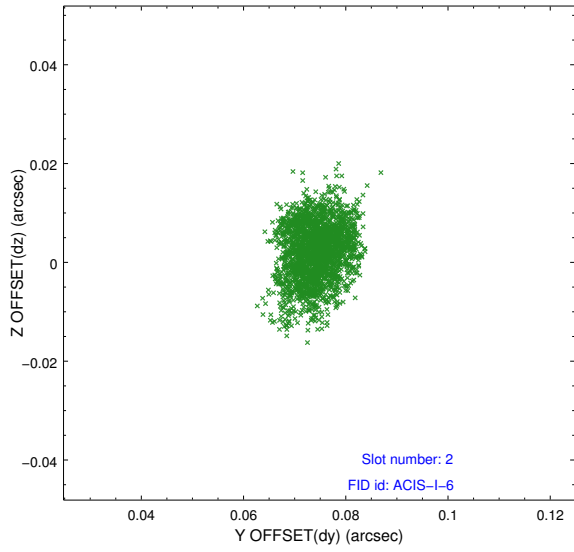
2.5.1 Slot 0



2.5.2 Slot 1



2.5.3 Slot 2



A Summary

A.1 Status

V&V Scientist	Beth Sundheim
V&V Date (YYYY-MM-DD)	2012.05.27
V&V Edition	1
V&V Disposition and Status	OK
V&V Charge Time	8.94961806

A.2 Comments