

V&V Reference Report

L2 ASCDS Version : 8.4.4

Observation 8901 - L2 Version 2
Chandra X-Ray Center

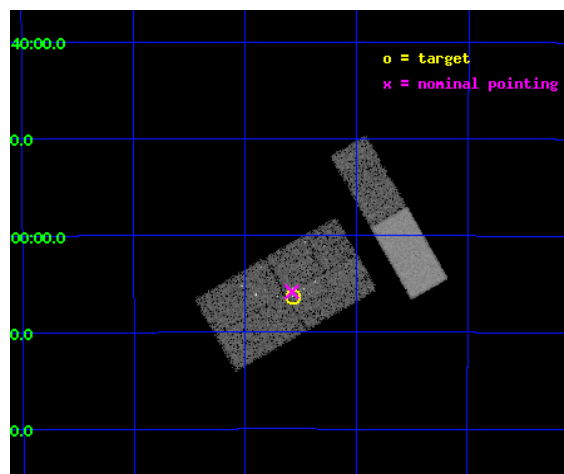
L2 Processing Date : May 12 2012

Contents

1	Front	2
2	OBI	3
2.1	OBI	3
2.1.1	Images	3
2.1.2	Bias	3
2.1.3	Parameters	4
2.1.4	Events	4
2.2	Compared Parameters	5
2.3	Aspect	6
2.4	Star Slots	9
2.4.1	Slot 3	9
2.4.2	Slot 4	10
2.4.3	Slot 5	11
2.4.4	Slot 6	12
2.4.5	Slot 7	13
2.5	FID Slots	14
2.5.1	Slot 0	14
2.5.2	Slot 1	15
2.5.3	Slot 2	16
A	Summary	17
A.1	Status	17
A.2	Comments	17

1 Front

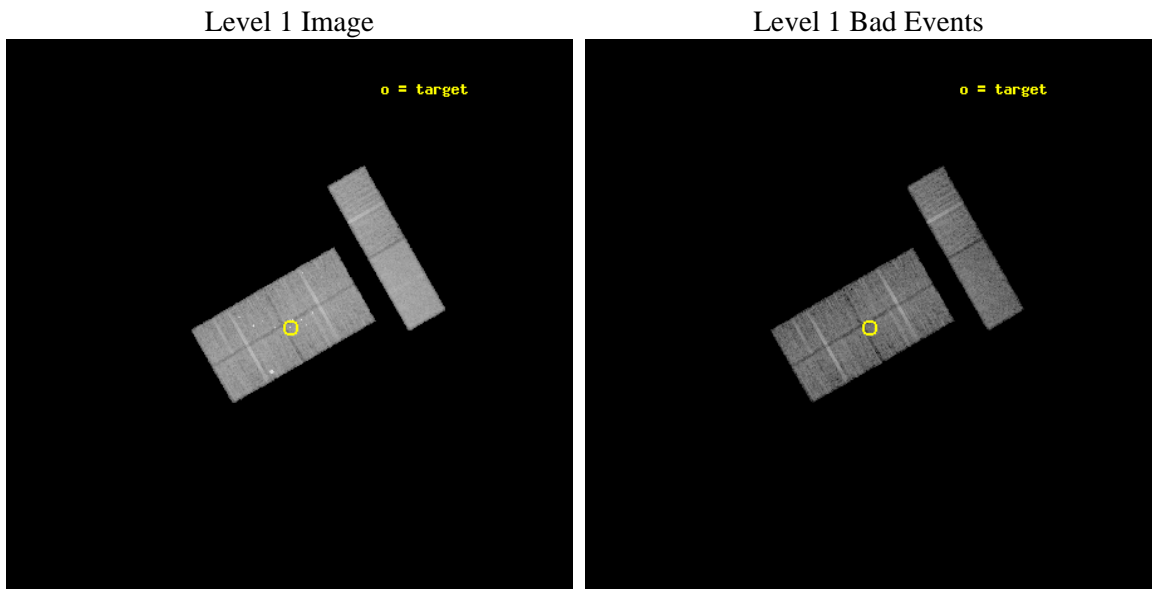
seq_num	200482	Sequence number
obs_id	8901	Observation id
title	Are the Herbig Ae star HR 5999 and the peculiar A-type star HR 6000 X-ray emitter?	Proposal title
observer	Dr. Jan Robrade	Principal investigator
object	HR 5999	Source name
dtcycle	0	
cycle	P	events from which exps? Prim/Second/Both
ra_targ	242.142917	Observer's specified target RA [deg]
dec_targ	-39.105139	Observer's specified target Dec [deg]
ra_nom	242.14509723231	Nominal RA [deg]
dec_nom	-39.097248016654	Nominal Dec [deg]
roll_nom	60.173740612248	Nominal Roll [deg]
revision	2	Processing version of data
ontime	10125.000066996	Sum of GTIs [s]
livetime	9899.2961155609	Livetime [s]
ontime0	10125.000066996	Sum of GTIs [s]
ontime1	10125.000066996	Sum of GTIs [s]
ontime2	10125.000066996	Sum of GTIs [s]
ontime3	10125.000066996	Sum of GTIs [s]
ontime6	10125.000066996	Sum of GTIs [s]
ontime7	10125.000066996	Sum of GTIs [s]
l2events	61250	Number of level 2 events



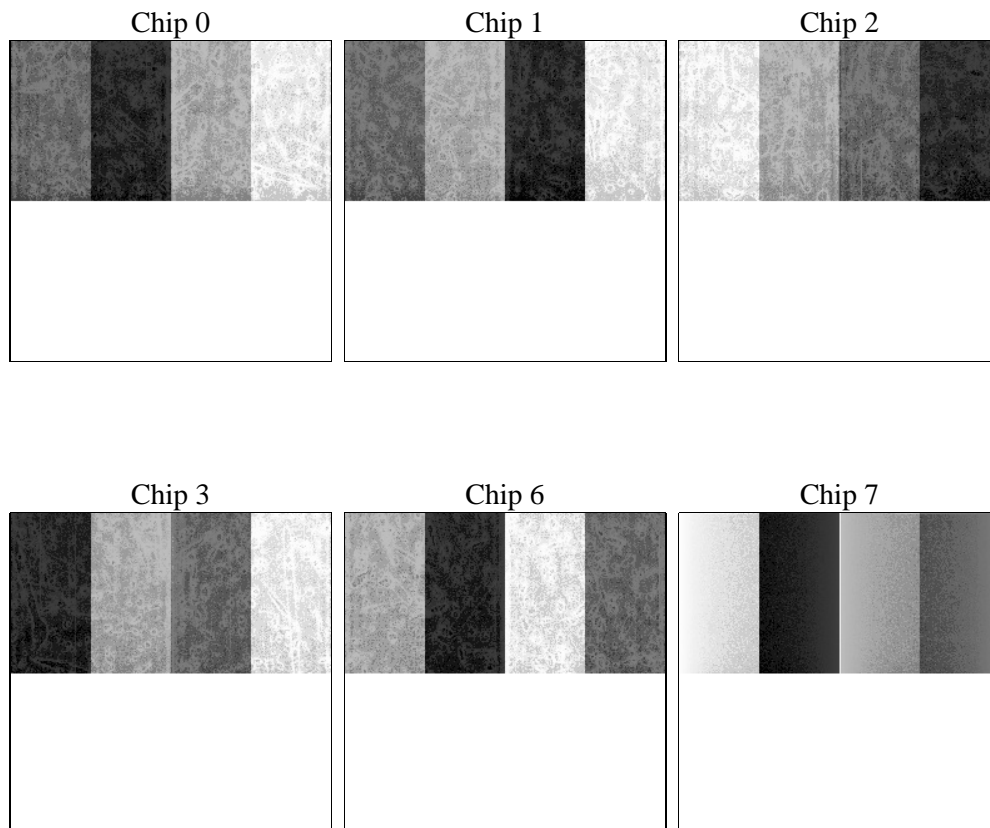
2 OBI

2.1 OBI

2.1.1 Images



2.1.2 Bias



2.1.3 Parameters

obi_num	0	Obi number	sched_exp_time	10000.000000	[s] Scheduled observation exposure time
ascdsver	8.4.4	Processing system revision	ontime	10125.000066996	Sum of GTIs [s]
caldbver	4.4.9	 	ontime0	10125.000066996	Sum of GTIs [s]
date	2012-05-13T00:06:59	Date and time of file creation	ontime1	10125.000066996	Sum of GTIs [s]
revision	2	Processing version of data	ontime2	10125.000066996	Sum of GTIs [s]
			ontime3	10125.000066996	Sum of GTIs [s]
			ontime6	10125.000066996	Sum of GTIs [s]
			ontime7	10125.000066996	Sum of GTIs [s]
			l1events	381429	Number of level 1 events

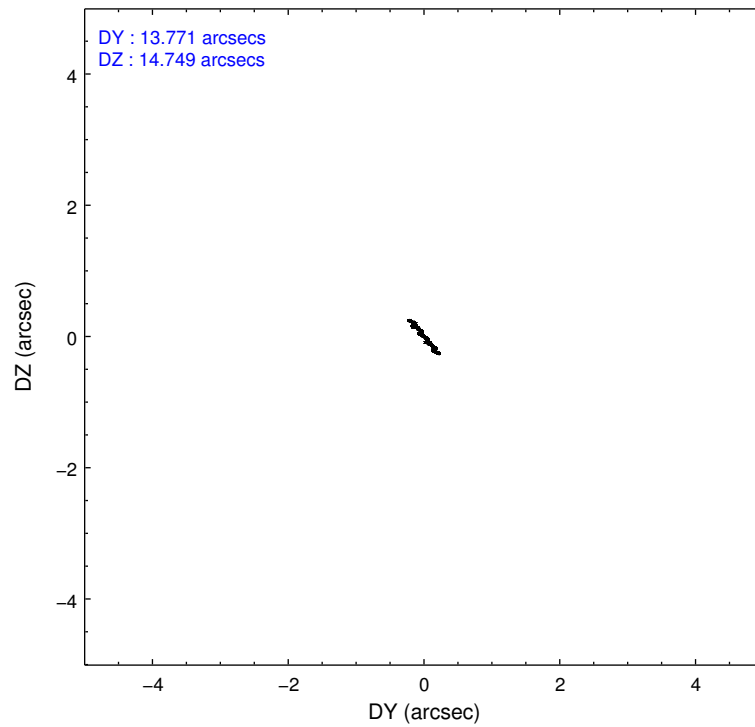
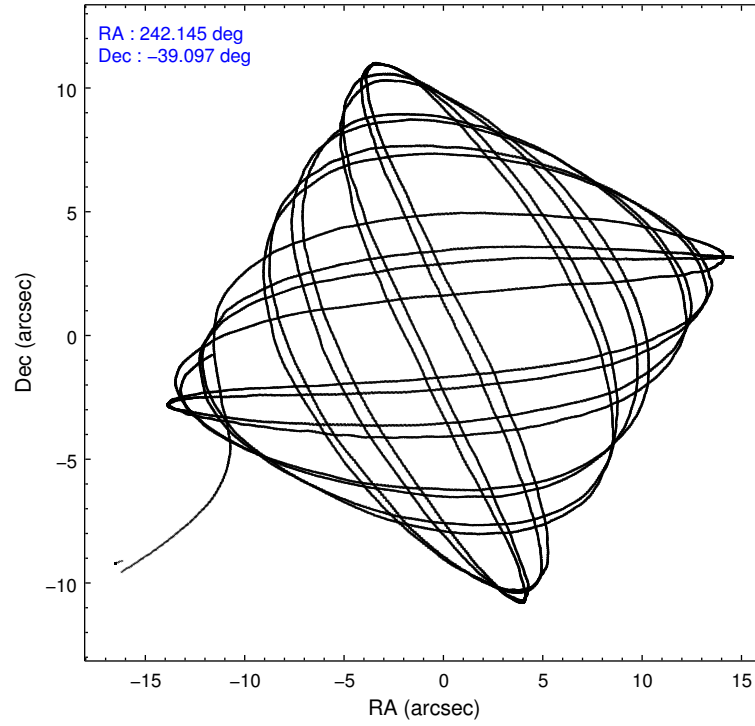
2.1.4 Events

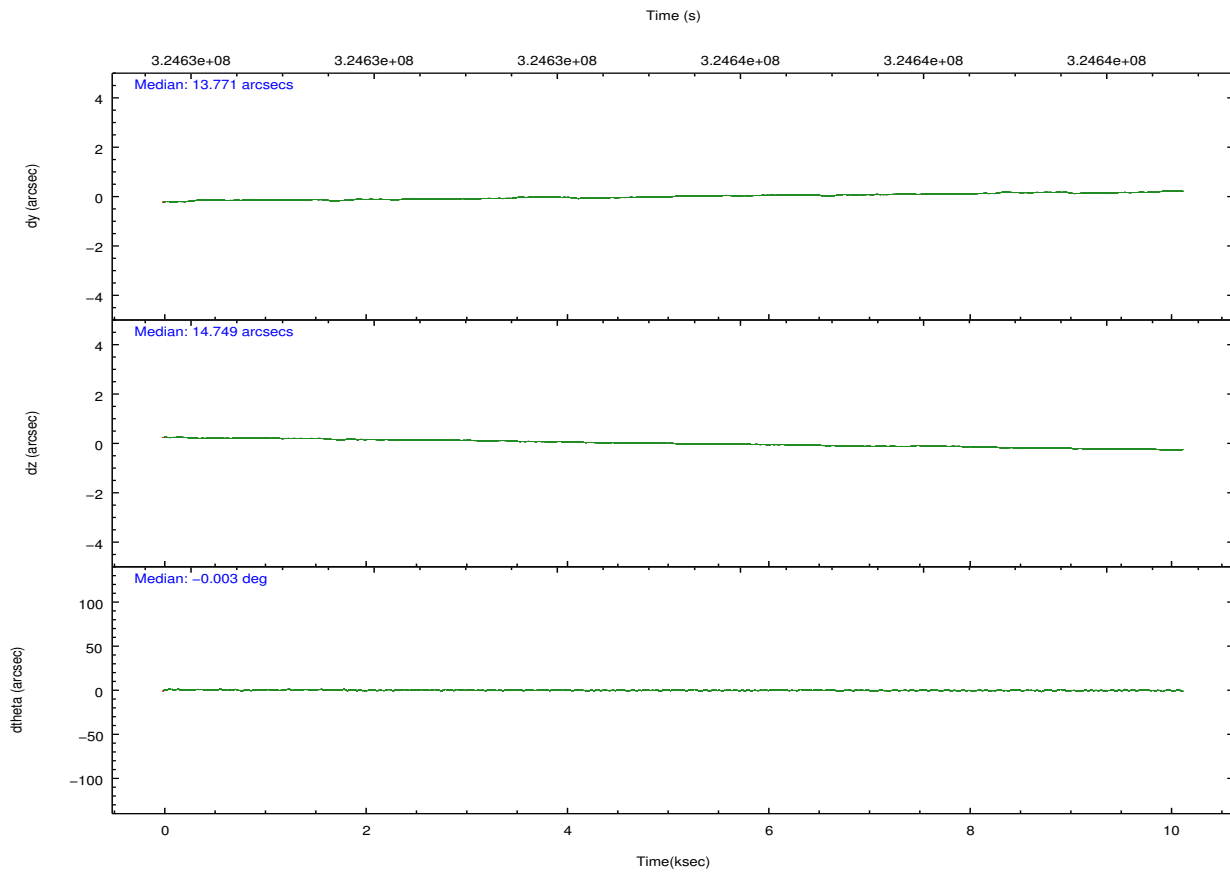
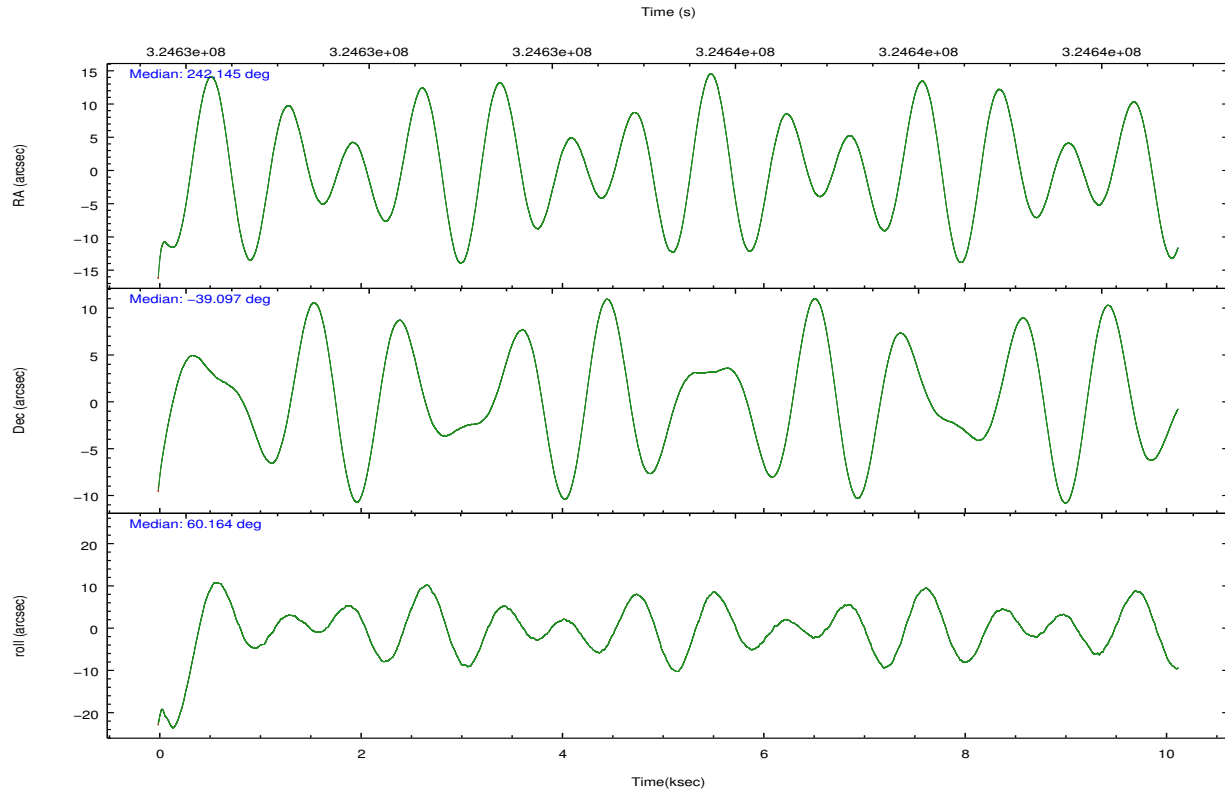
	ccd 0	ccd 1	ccd 2	ccd 3	ccd 6	ccd 7		ccd 0	ccd 1	ccd 2	ccd 3	ccd 6	ccd 7
level 1 events	56814	60129	60585	61717	62670	79514	grade 0 events	4609	5197	4157	4661	2695	3170
rejected events	48505	51317	53012	53417	56128	49655		8%	8%	6%	7%	4%	3%
rejected %	85%	85%	87%	86%	89%	62%	grade 1 events	71	35	81	41	28	103
								0%	0%	0%	0%	0%	0%
							grade 2 events	1670	1695	1458	1468	1531	6850
								2%	2%	2%	2%	2%	8%
							grade 3 events	798	759	779	873	805	3092
								1%	1%	1%	1%	1%	3%
							grade 4 events	786	776	827	813	787	2977
								1%	1%	1%	1%	1%	3%
							grade 5 events	2543	2562	2462	2906	2836	7745
								4%	4%	4%	4%	4%	9%
							grade 6 events	1208	1346	1121	1232	1449	17098
								2%	2%	1%	1%	2%	21%
							grade 7 events	45129	47759	49700	49723	52539	38479
								79%	79%	82%	80%	83%	48%

2.2 Compared Parameters

Parameter	Planned	Actual	Parameter	Planned	Actual
Instrument	ACIS	ACIS	Obspar format version number	7	7
Detector	ACIS-012367	ACIS-012367	Obspar file type	PREDICTED	ACTUAL
Grating	NONE	NONE	Obspar update status	NONE	UPDATED
Data mode	FAINT	FAINT	CCD I0 on	Y	Y
Observation mode	POINTING	POINTING	CCD I1 on	Y	Y
[deg] Pointing RA	242.145429	242.1450972323112	CCD I2 on	Y	Y
[deg] Pointing Dec	-39.124753	-39.09724801665364	CCD I3 on	Y	Y
[deg] Pointing Roll	59.965259	60.17374061224788	CCD S0 on	N	N
[mm] SIM focus pos	-0.782348	-0.7809083437167272	CCD S1 on	N	N
[mm] SIM defocus	0	0.001439871863259334	CCD S2 on	O1	Y
[mm] SIM translation stage pos	-233.592463	-233.5874344608287	CCD S3 on	O2	Y
[mm] SIM translation stage offset	0	-0.005018542100998502	CCD S4 on	N	N
[s] Observation start time (MET)	324630321.184000	324628932.43211	CCD S5 on	N	N
Observation start date	2008-04-15T07:04:16	2008-04-15T06:42:12	Number of optional ACIS chips dropped	0	0
[s] Observation end time (MET)	324640321.184000	324640750.68269	On-chip summing requested	N	N
Observation end date	2008-04-15T09:50:56	2008-04-15T09:59:10	Subarray requested	CUSTOM	1/2
Read mode	TIMED	TIMED	Subarray start row	513	513
			Subarray row count	512	512
			Alternating exposures requested	N	N
			[s] Primary exposure time	0.000000	1.8

2.3 Aspect



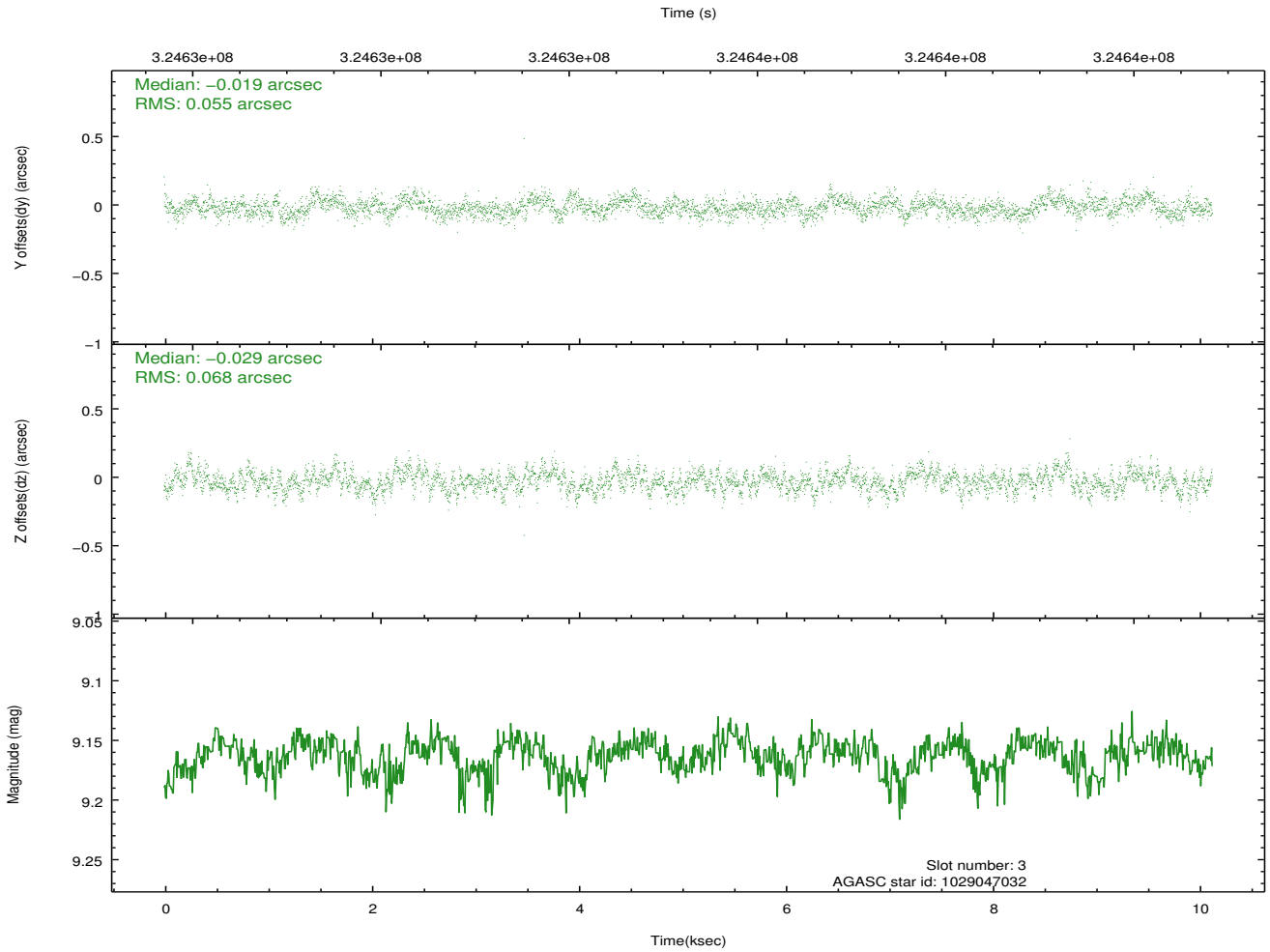
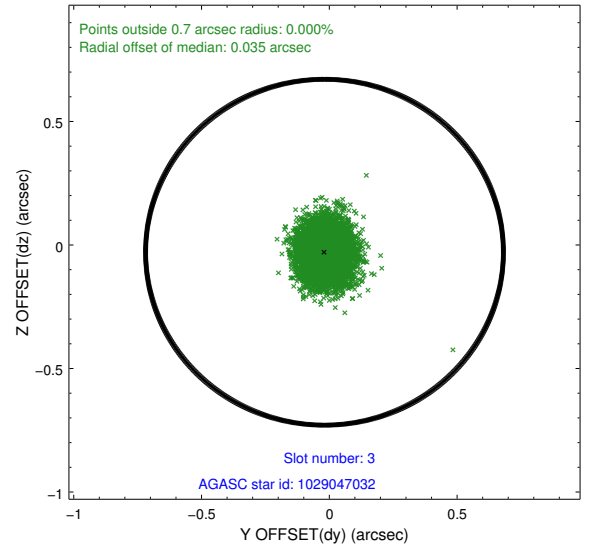
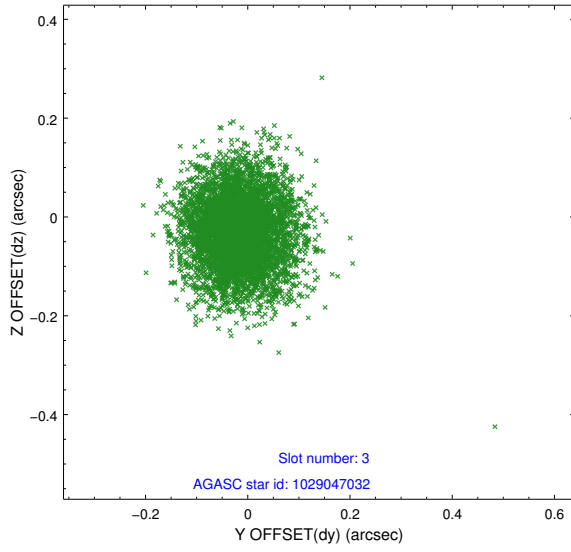


Slot Statistics

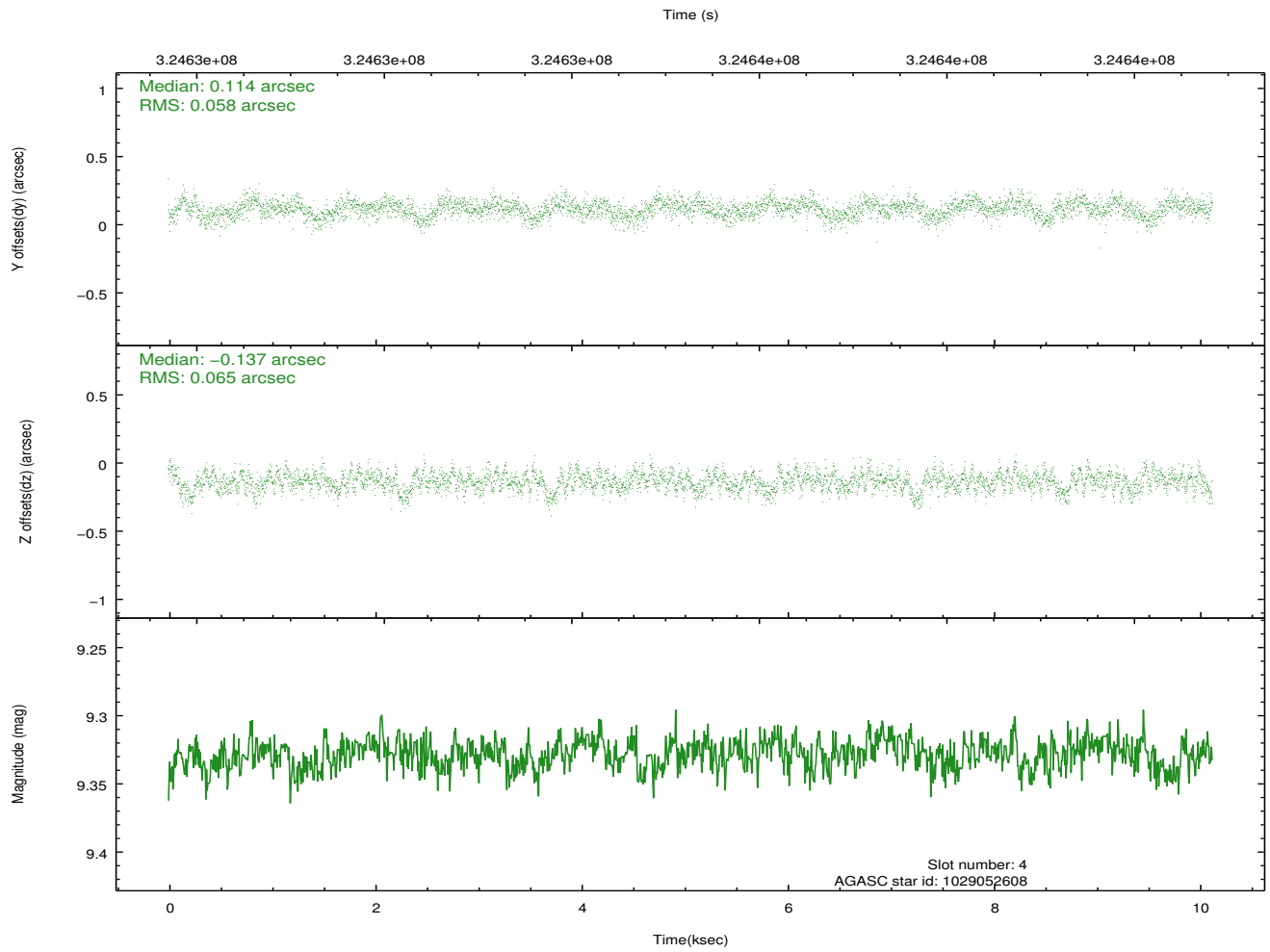
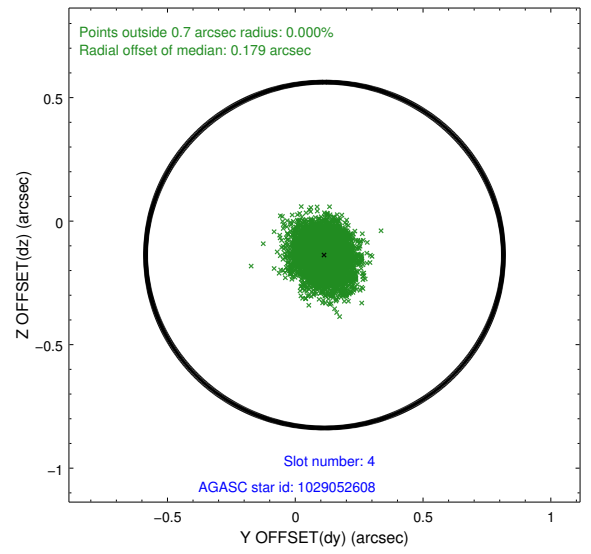
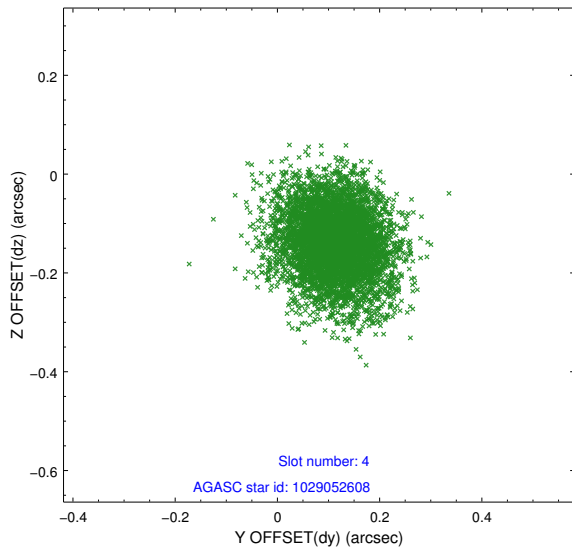
slot	status	id	mag	n_pts	med_dy	med_dz	dr1	dr2	ra	dec	mean_y	mean_z
0	FID	ACIS-I-1	7.00	2471	0.009	0.027	0.006	0.011	0.000000	0.000000	925.74	-838.31
1	FID	ACIS-I-5	6.99	2471	-0.190	0.024	0.007	0.012	0.000000	0.000000	-1822.30	1058.89
2	FID	ACIS-I-6	7.00	2471	0.090	0.019	0.007	0.012	0.000000	0.000000	390.77	1704.00
3	GUIDE	1029047032	9.16	4940	-0.019	-0.029	0.093	0.150	241.657214	-39.145122	-749.04	1141.47
4	GUIDE	1029052608	9.33	4936	0.114	-0.137	0.092	0.152	241.909057	-39.099888	-254.08	616.41
5	GUIDE	1029059360	8.27	4942	0.045	-0.021	0.071	0.110	241.638388	-39.259513	-1130.88	978.78
6	GUIDE	1029580280	9.17	4938	0.007	0.199	0.086	0.141	242.322361	-39.646406	-1380.55	-1364.33
7	GUIDE	1029579520	7.44	4939	-0.151	-0.011	0.072	0.121	241.185376	-39.434662	-2314.86	1744.92

2.4 Star Slots

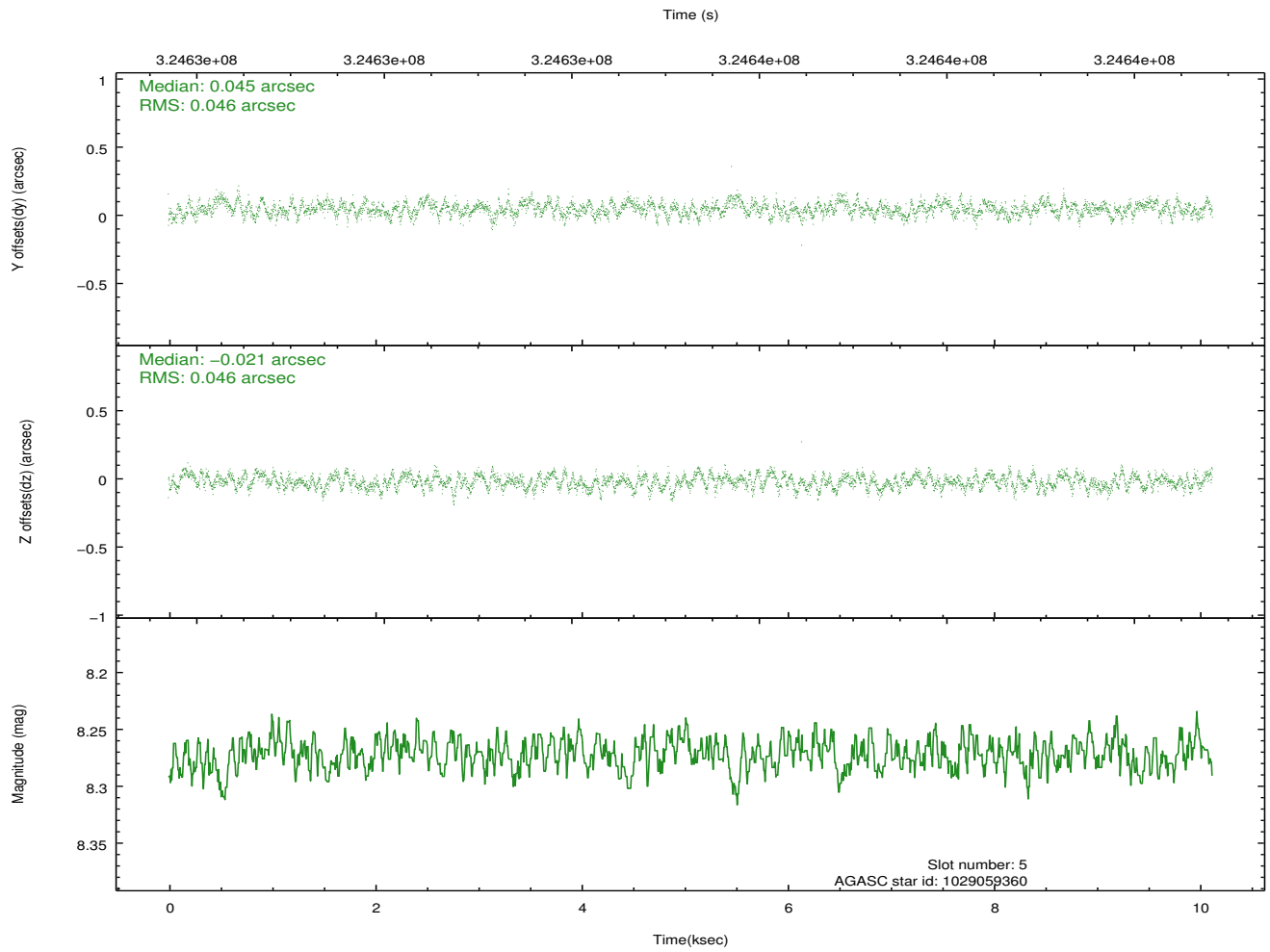
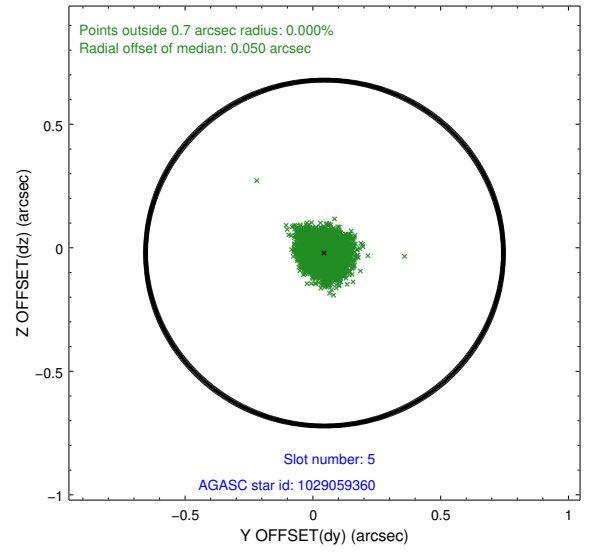
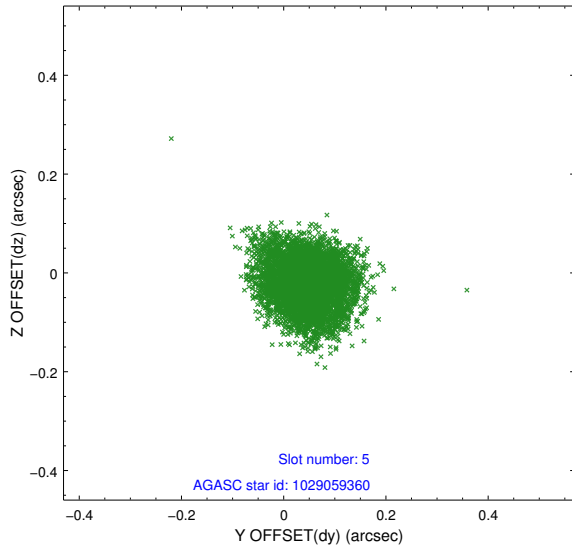
2.4.1 Slot 3



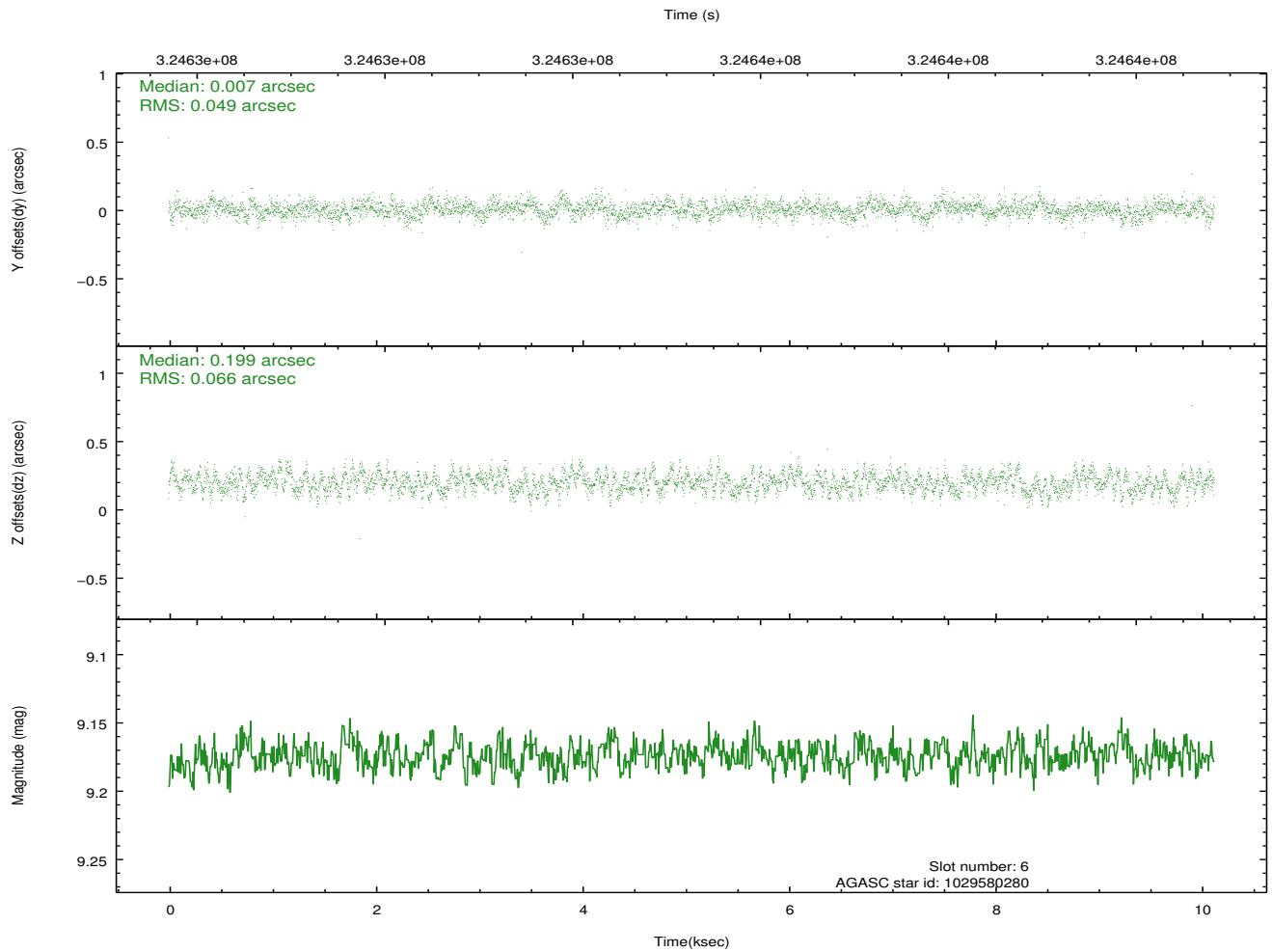
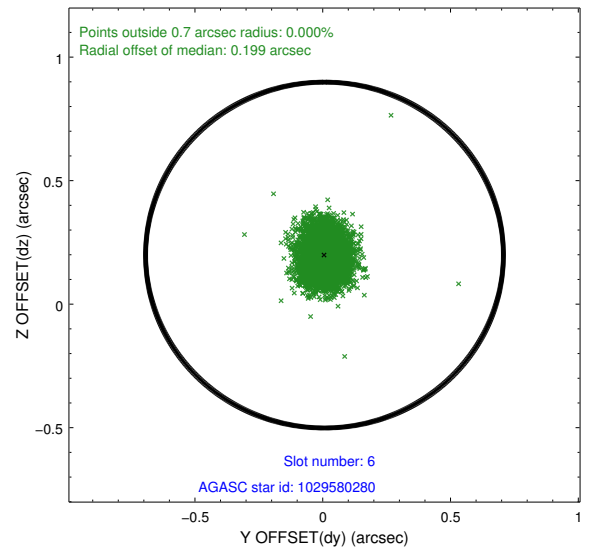
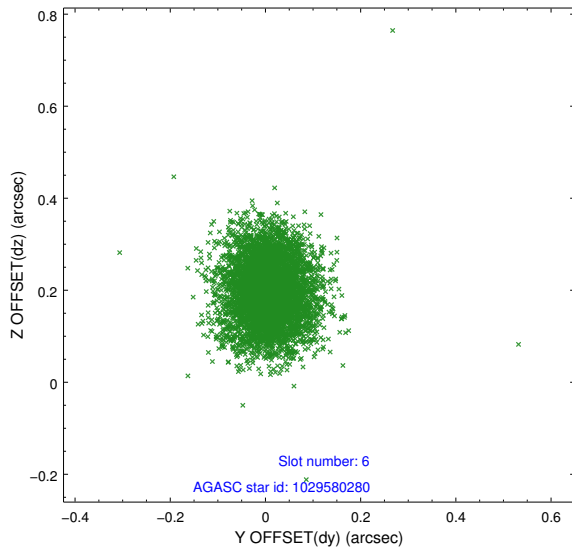
2.4.2 Slot 4



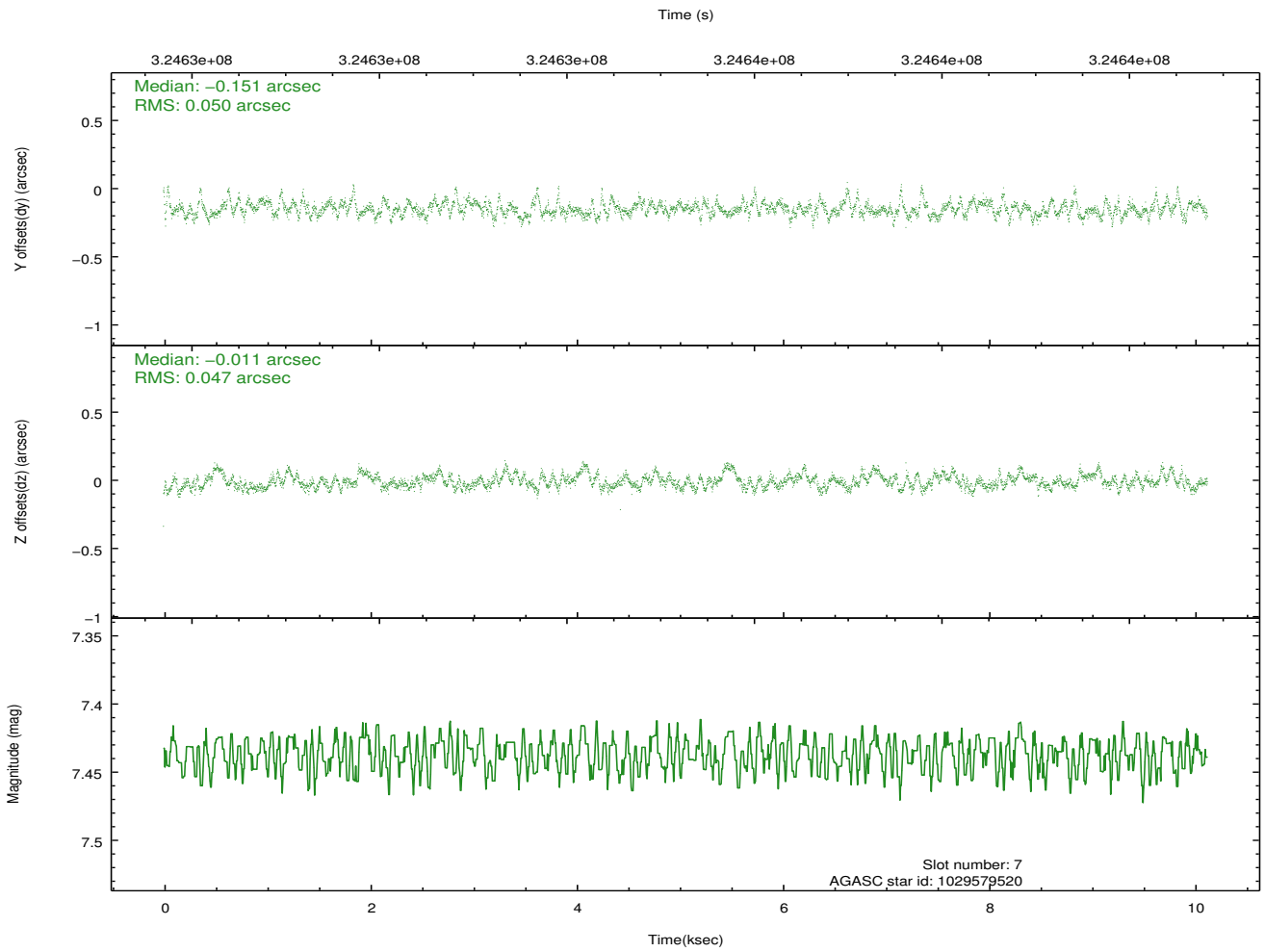
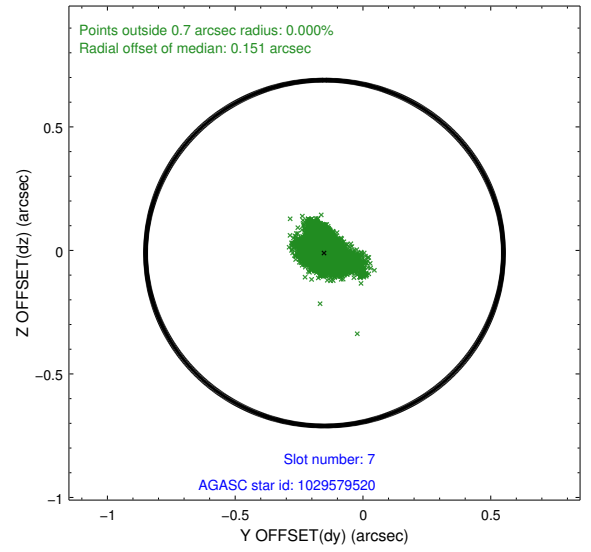
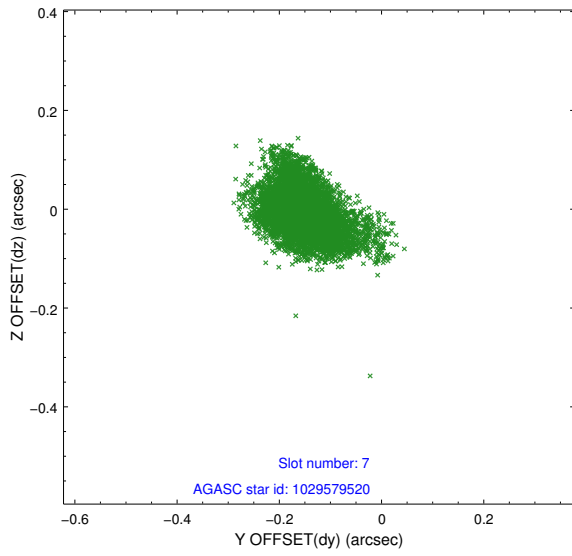
2.4.3 Slot 5



2.4.4 Slot 6

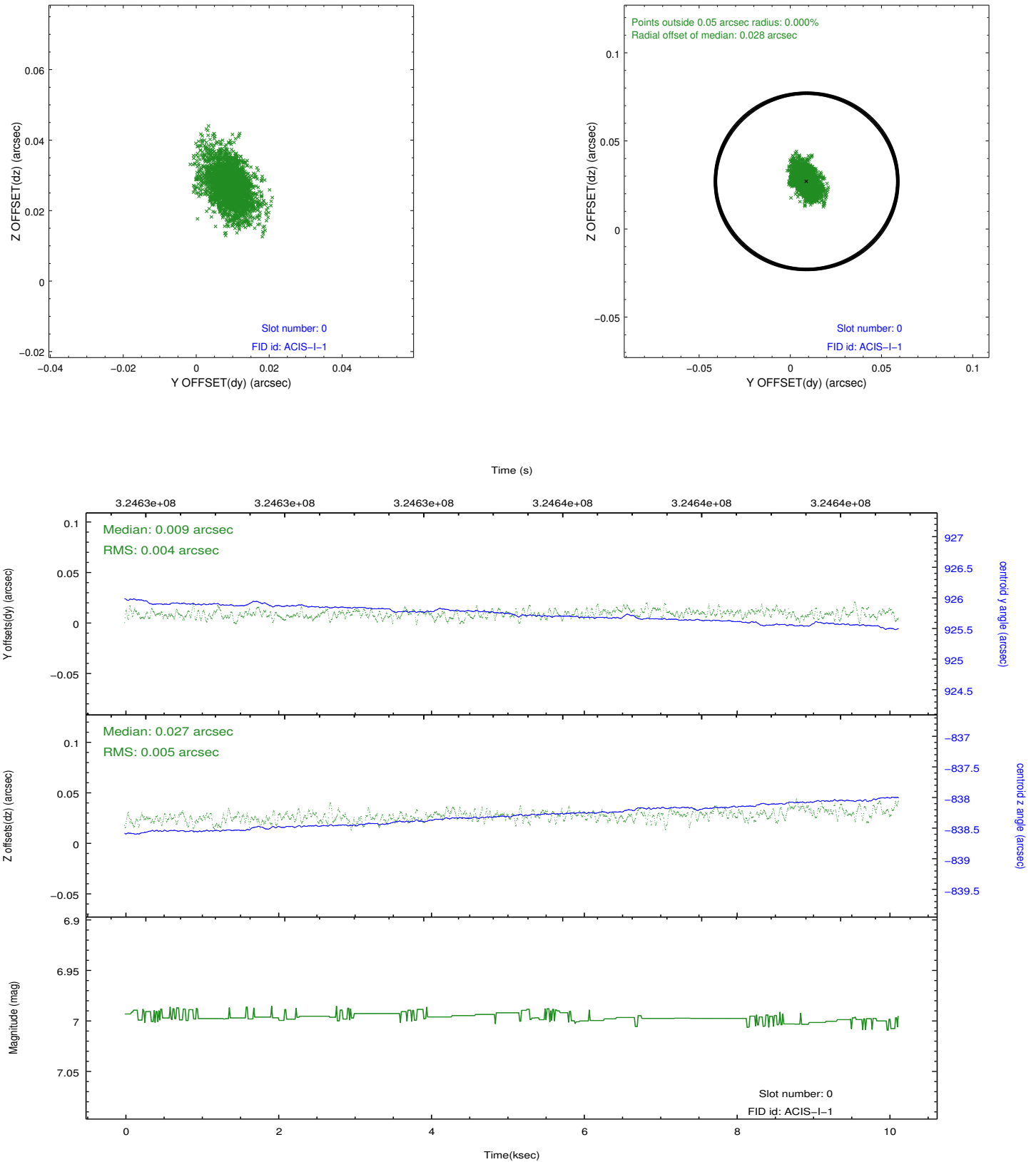


2.4.5 Slot 7

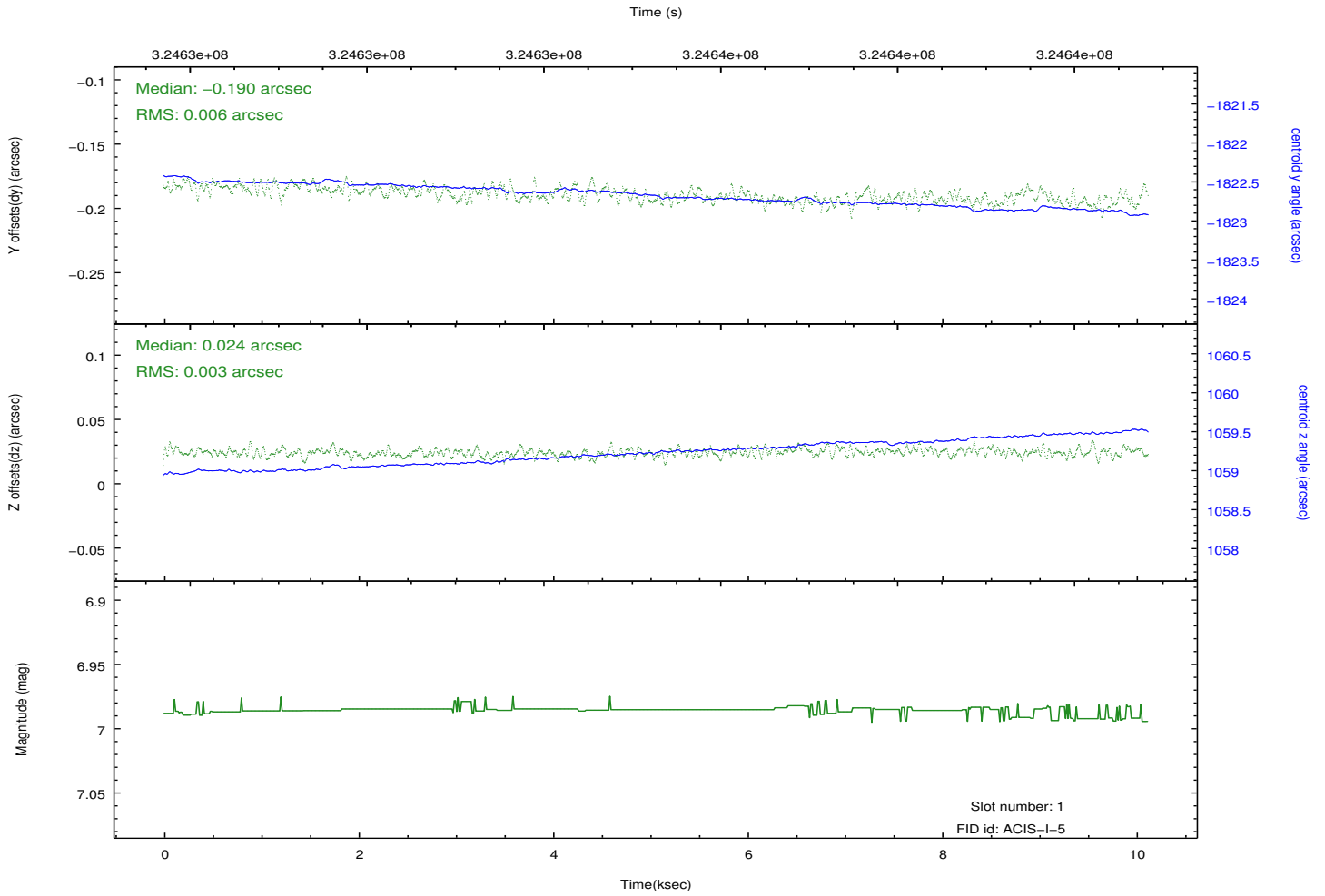
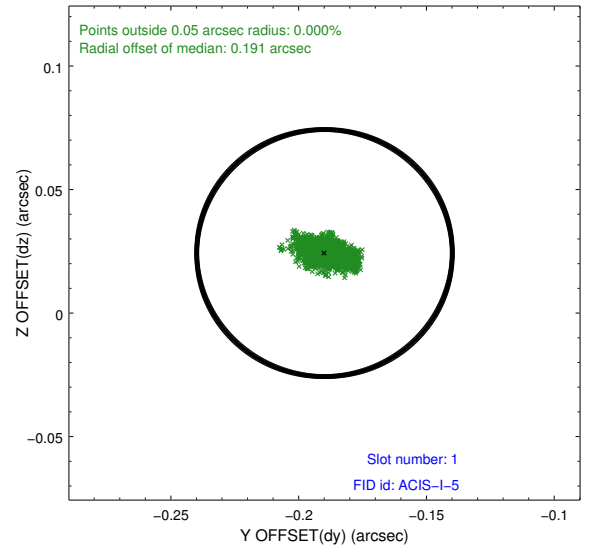
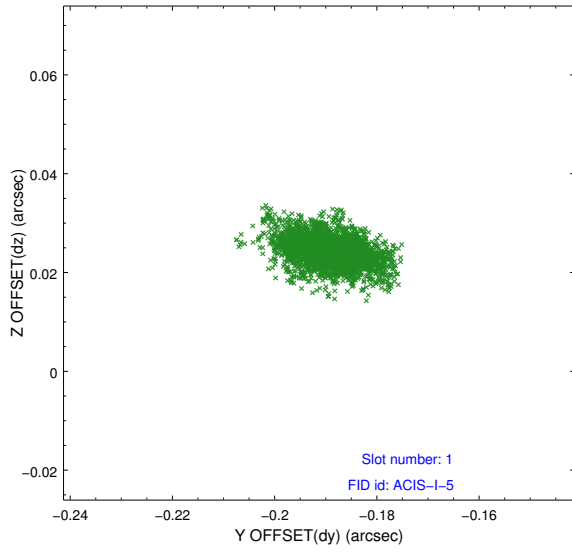


2.5 FID Slots

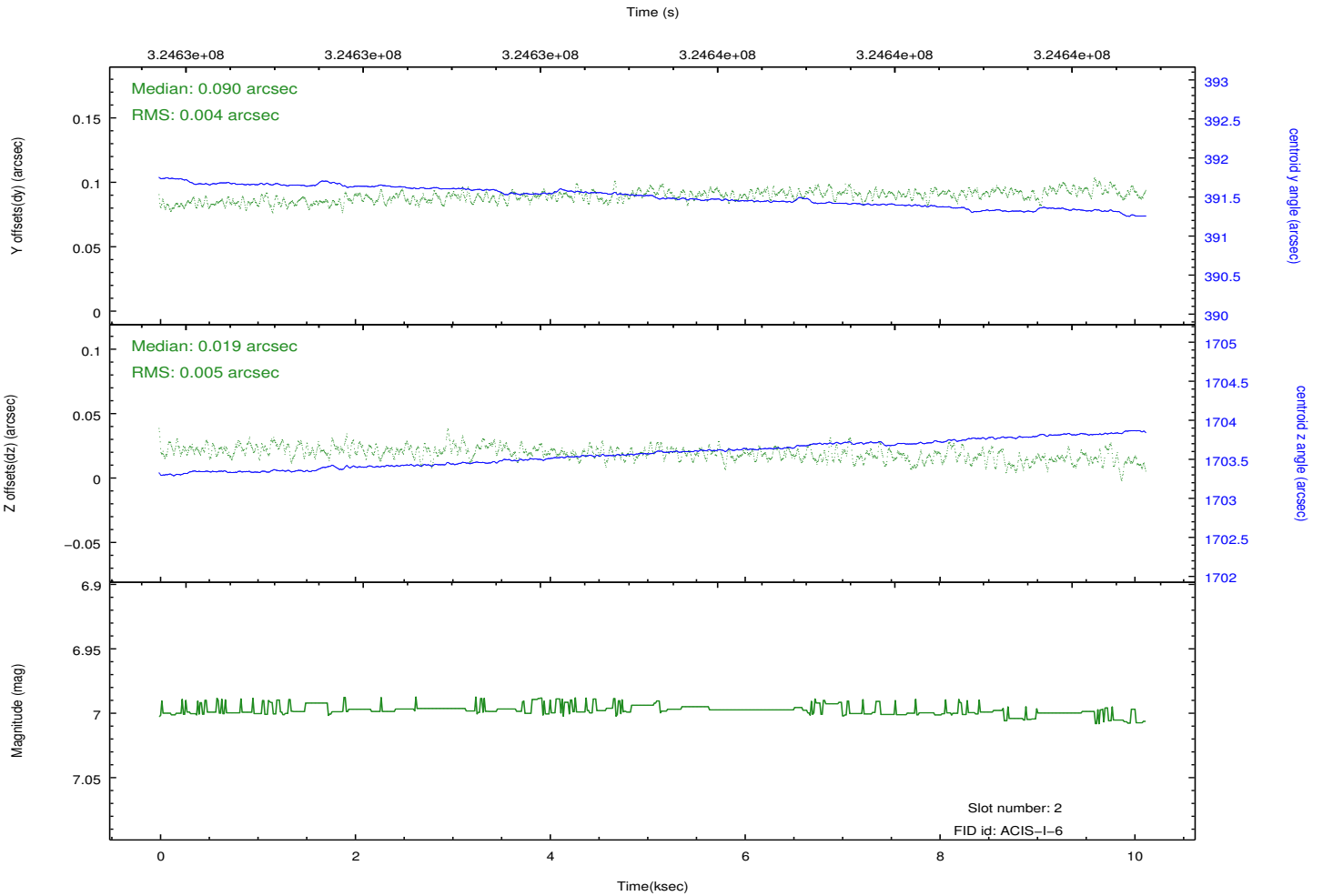
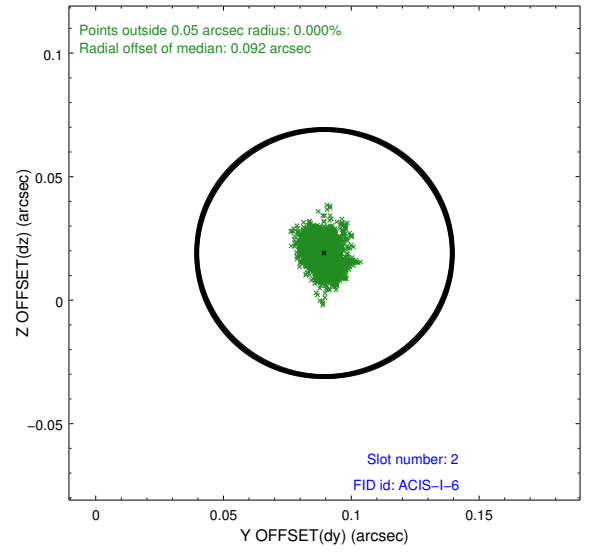
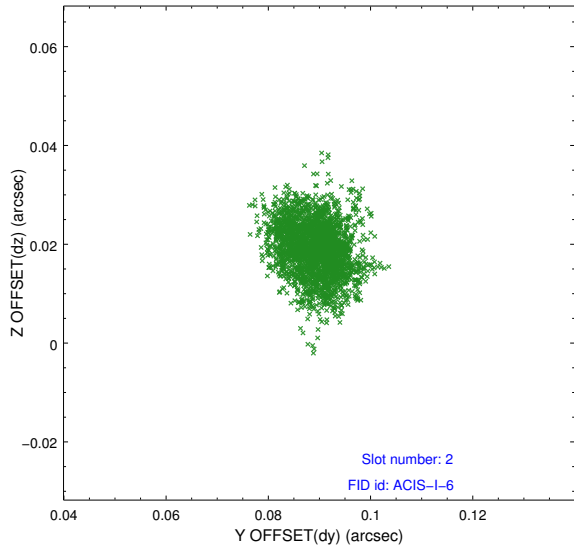
2.5.1 Slot 0



2.5.2 Slot 1



2.5.3 Slot 2



A Summary

A.1 Status

V&V Scientist	Beth Sundheim
V&V Date (YYYY-MM-DD)	2012.05.15
V&V Edition	1
V&V Disposition and Status	OK
V&V Charge Time	10.125

A.2 Comments