

# V&V Reference Report

## L2 ASCDS Version : 8.4.4

Observation 8921 - L2 Version 2  
Chandra X-Ray Center

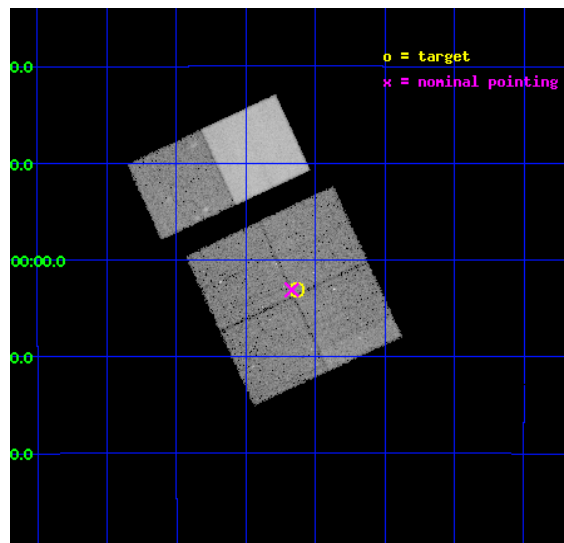
L2 Processing Date : May 6 2012

## Contents

<b>1</b>	<b>Front</b>	<b>2</b>
<b>2</b>	<b>OBI</b>	<b>3</b>
2.1	OBI . . . . .	3
2.1.1	Images . . . . .	3
2.1.2	Bias . . . . .	3
2.1.3	Parameters . . . . .	4
2.1.4	Events . . . . .	4
2.2	Compared Parameters . . . . .	5
2.3	Aspect . . . . .	6
2.4	Star Slots . . . . .	9
2.4.1	Slot 3 . . . . .	9
2.4.2	Slot 4 . . . . .	10
2.4.3	Slot 5 . . . . .	11
2.4.4	Slot 6 . . . . .	12
2.4.5	Slot 7 . . . . .	13
2.5	FID Slots . . . . .	14
2.5.1	Slot 0 . . . . .	14
2.5.2	Slot 1 . . . . .	15
2.5.3	Slot 2 . . . . .	16
<b>A</b>	<b>Summary</b>	<b>17</b>
A.1	Status . . . . .	17
A.2	Comments . . . . .	17

# 1 Front

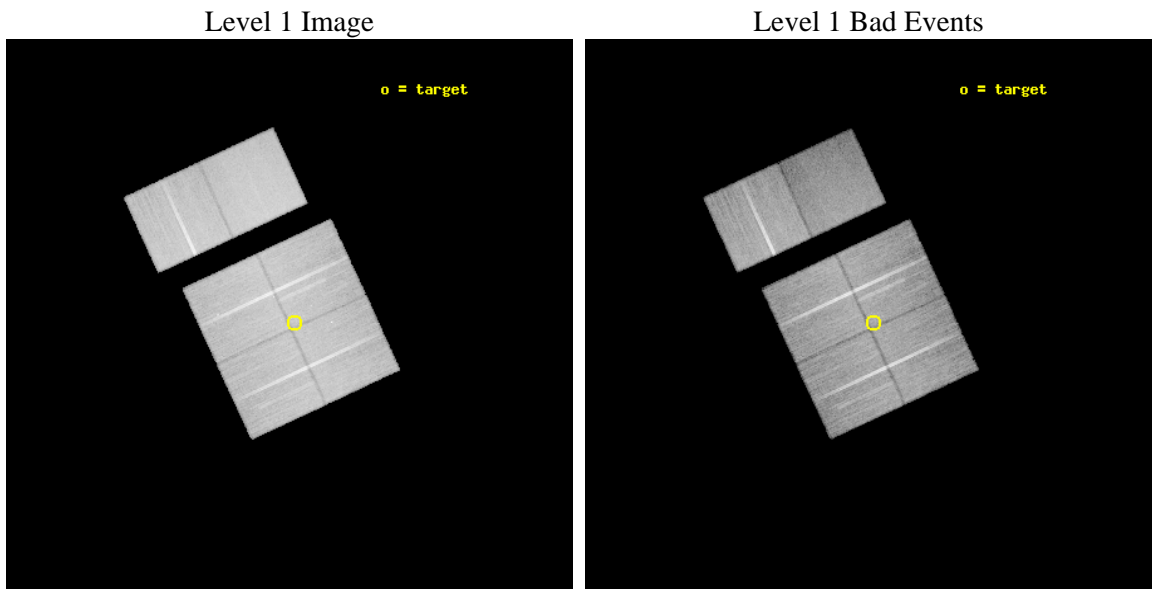
seq_num	200502	Sequence number
obs_id	8921	Observation id
title	The Full Picture of Magnetic Activity in Ultracool Dwarfs: Simultaneous Observations of Coronae and Chromospheres	Proposal title
observer	Prof. Edo Berger	Principal investigator
object	2MASS J0523382-140302	Source name
dtcycle	0	&#160
cycle	P	events from which exps? Prim/Second/Both
ra_targ	80.909167	Observer's specified target RA [deg]
dec_targ	-14.050556	Observer's specified target Dec [deg]
ra_nom	80.917407755408	Nominal RA [deg]
dec_nom	-14.051630686841	Nominal Dec [deg]
roll_nom	335.09952365934	Nominal Roll [deg]
revision	2	Processing version of data
ontime	30156.799887717	Sum of GTIs [s]
livetime	29774.936329294	Livetime [s]
ontime0	30156.799887717	Sum of GTIs [s]
ontime1	30156.799887717	Sum of GTIs [s]
ontime2	30156.799887717	Sum of GTIs [s]
ontime3	30156.799887717	Sum of GTIs [s]
ontime6	30156.799887717	Sum of GTIs [s]
ontime7	30156.799887717	Sum of GTIs [s]
l2events	226566	Number of level 2 events



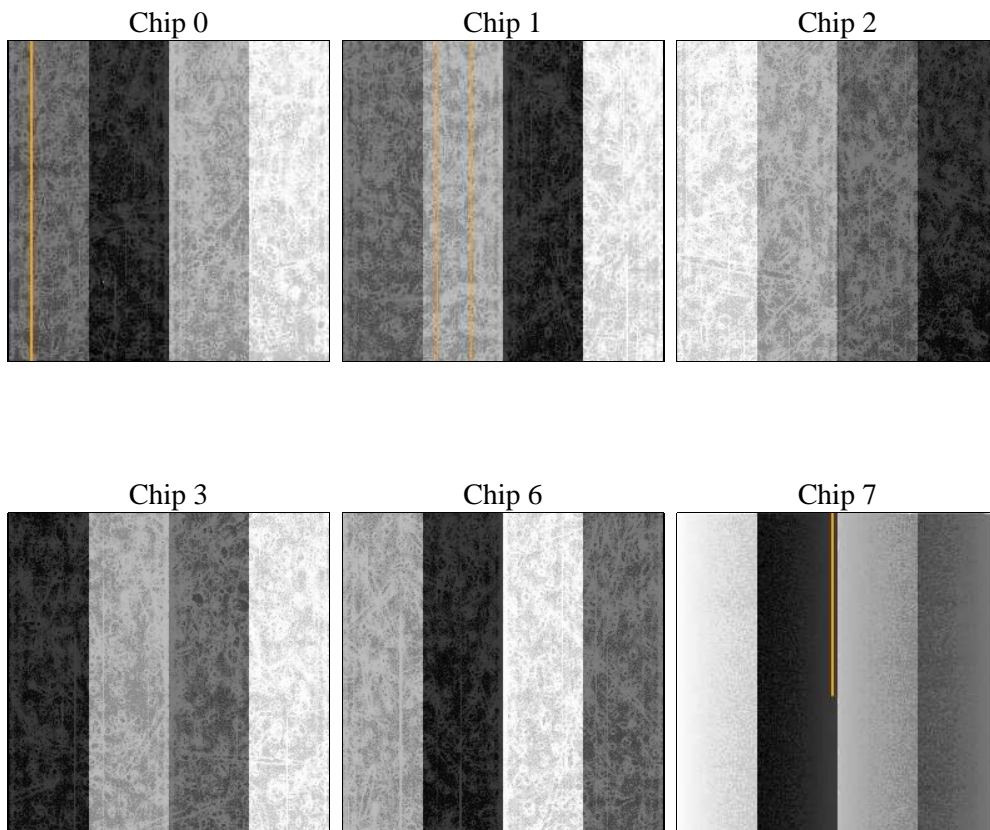
## 2 OBI

### 2.1 OBI

#### 2.1.1 Images



#### 2.1.2 Bias



### 2.1.3 Parameters

obi_num	0	Obi number	sched_exp_time	30000.000000	[s] Scheduled observation exposure time
ascdsver	8.4.4	Processing system revision	ontime	30156.799887717	Sum of GTIs [s]
caldbver	4.4.9	&#160	ontime0	30156.799887717	Sum of GTIs [s]
date	2012-05-06T16:10:55	Date and time of file creation	ontime1	30156.799887717	Sum of GTIs [s]
revision	2	Processing version of data	ontime2	30156.799887717	Sum of GTIs [s]
			ontime3	30156.799887717	Sum of GTIs [s]
			ontime6	30156.799887717	Sum of GTIs [s]
			ontime7	30156.799887717	Sum of GTIs [s]
			l1events	1524360	Number of level 1 events

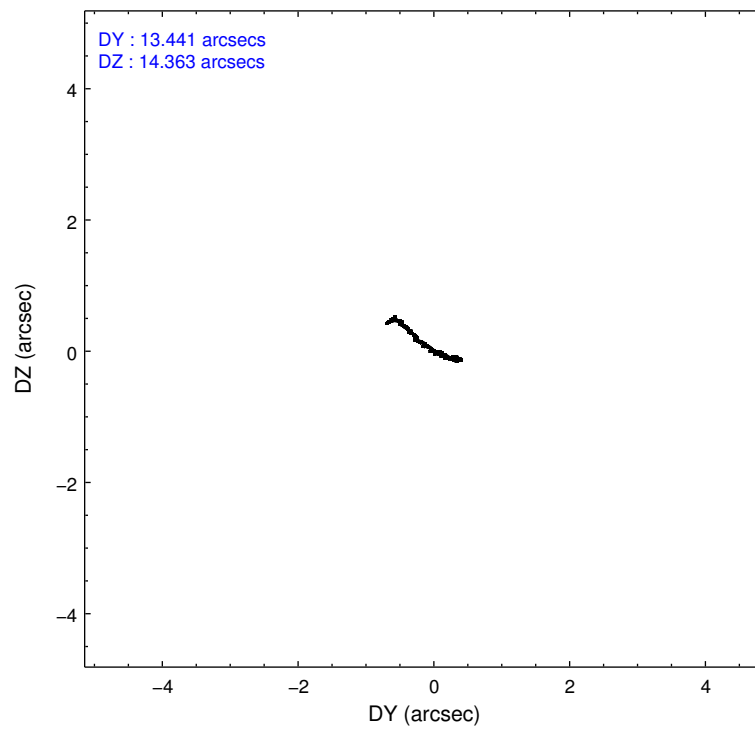
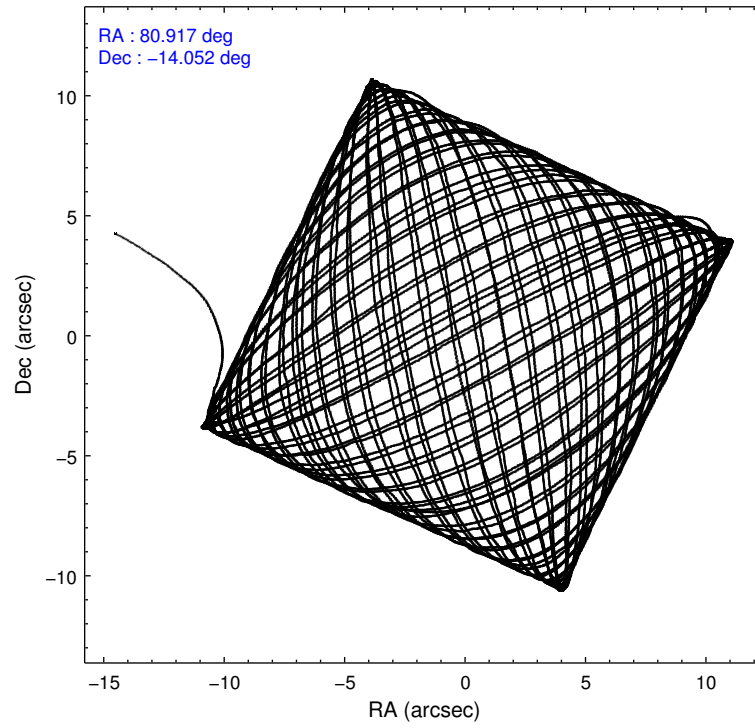
### 2.1.4 Events

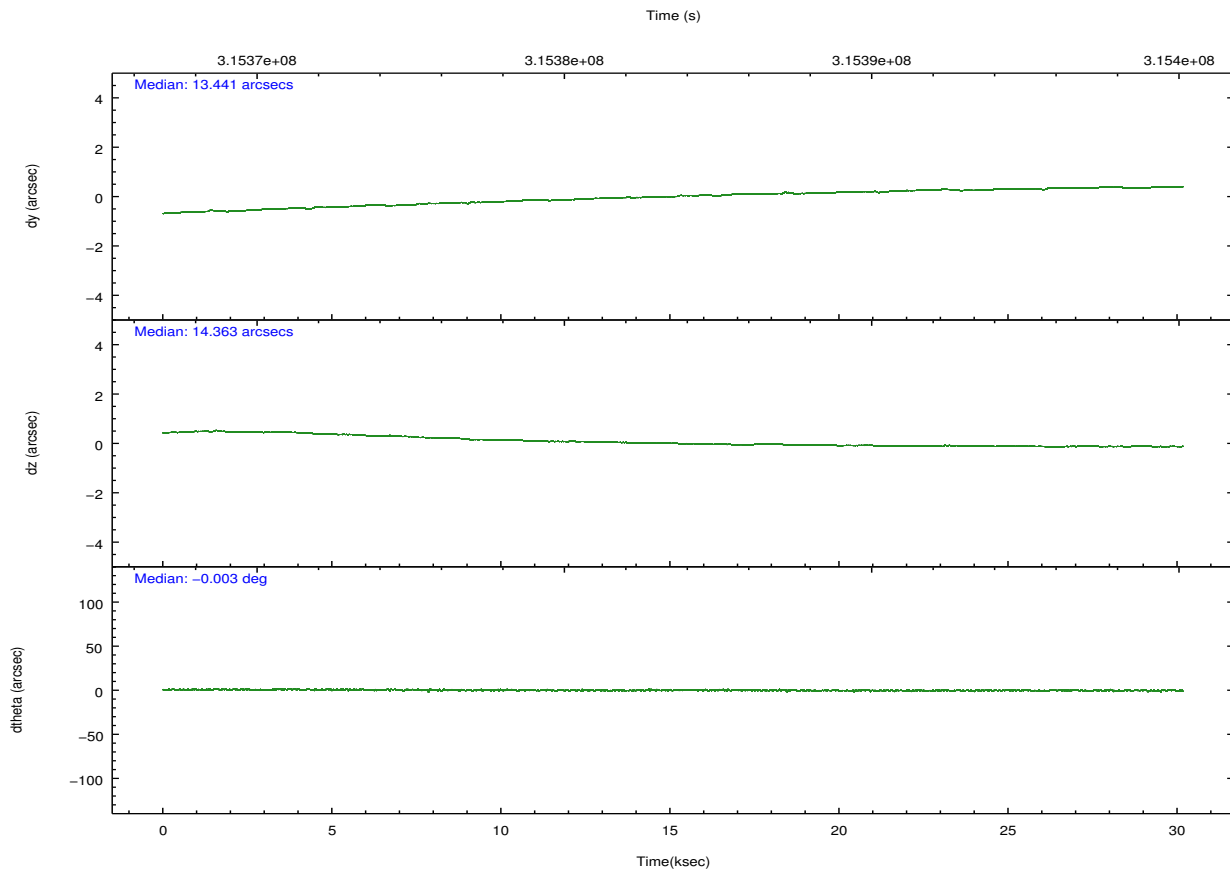
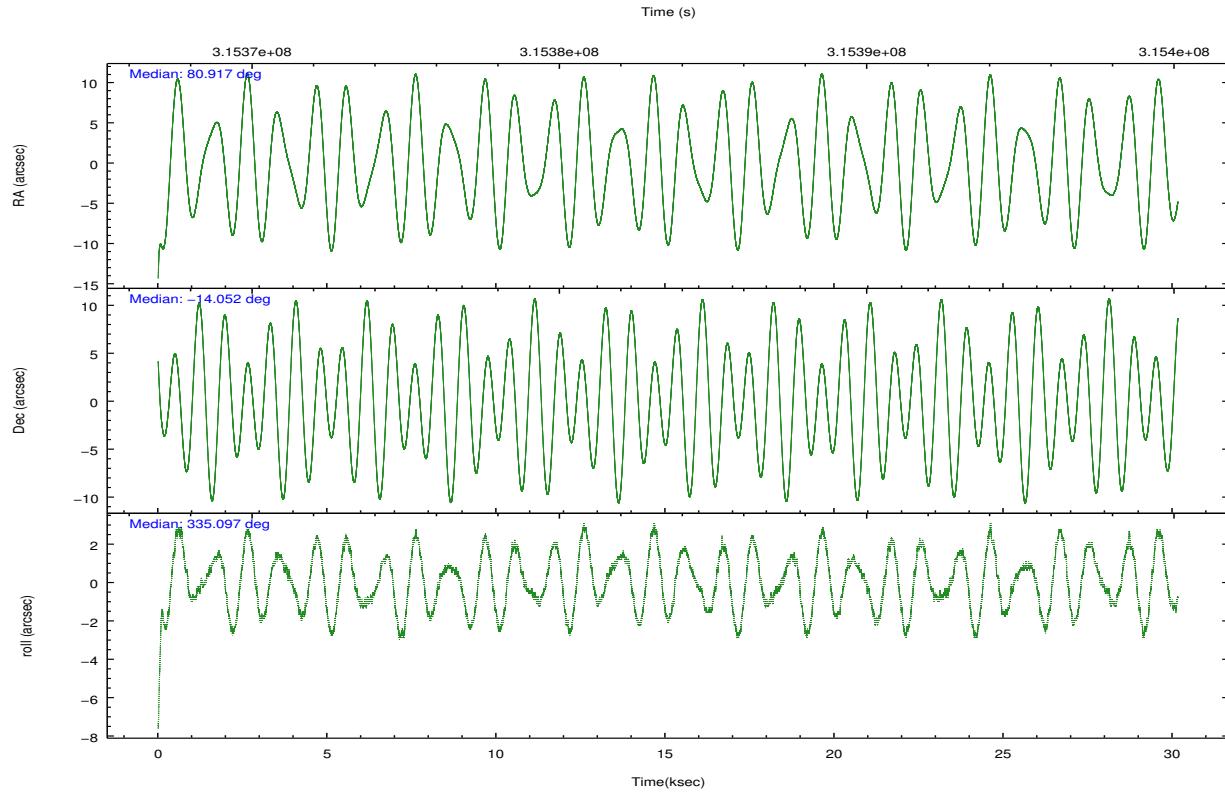
	ccd 0	ccd 1	ccd 2	ccd 3	ccd 6	ccd 7		ccd 0	ccd 1	ccd 2	ccd 3	ccd 6	ccd 7
level 1 events	238446	235587	258404	246876	265183	279864	grade 0 events	8452	10429	8831	8109	9344	11694
rejected events	214144	207744	233752	223992	238997	154266		3%	4%	3%	3%	3%	4%
rejected %	89%	88%	90%	90%	90%	55%	grade 1 events	123	142	155	137	130	342
								0%	0%	0%	0%	0%	0%
							grade 2 events	6169	6292	6093	5150	6073	25714
								2%	2%	2%	2%	2%	9%
							grade 3 events	2755	2971	2661	2602	2820	11608
								1%	1%	1%	1%	1%	4%
							grade 4 events	2504	2955	2707	2664	2706	11872
								1%	1%	1%	1%	1%	4%
							grade 5 events	8878	9763	8466	10210	10473	29490
								3%	4%	3%	4%	3%	10%
							grade 6 events	4753	5548	4653	4654	5557	66363
								1%	2%	1%	1%	2%	23%
							grade 7 events	204812	197487	224838	213350	228080	122781
								85%	83%	87%	86%	86%	43%

## 2.2 Compared Parameters

Parameter	Planned	Actual	Parameter	Planned	Actual
Instrument	ACIS	ACIS	Obspar format version number	7	7
Detector	ACIS-012367	ACIS-012367	Obspar file type	PREDICTED	ACTUAL
Grating	NONE	NONE	Obspar update status	NONE	UPDATED
Data mode	VFAINT	VFAINT	CCD I0 on	Y	Y
Observation mode	POINTING	POINTING	CCD I1 on	Y	Y
[deg] Pointing RA	80.889202	80.91740775540781	CCD I2 on	Y	Y
[deg] Pointing Dec	-14.054175	-14.05163068684126	CCD I3 on	Y	Y
[deg] Pointing Roll	334.883989	335.0995236593363	CCD S0 on	N	N
[s] Window start time (MET)	312854465.184000	312854465.184000	CCD S1 on	N	N
[s] Window stop time (MET)	316742465.184000	316742465.184000	CCD S2 on	O2	Y
[mm] SIM focus pos	-0.782348	-0.7809083437167272	CCD S3 on	O1	Y
[mm] SIM defocus	0	0.001439871863259334	CCD S4 on	N	N
[mm] SIM translation stage pos	-233.592463	-233.5874344608287	CCD S5 on	N	N
[mm] SIM translation stage offset	0	-0.005018542100998502	Number of optional ACIS chips dropped	0	0
[s] Observation start time (MET)	315368622.184000	315367366.64487	On-chip summing requested	N	N
Observation start date	2007-12-30T02:22:37	2007-12-30T02:02:46	Subarray requested	NONE	NONE
[s] Observation end time (MET)	315398622.184000	315399681.30894	Alternating exposures requested	N	N
Observation end date	2007-12-30T10:42:37	2007-12-30T11:01:21	[s] Primary exposure time	0.000000	3.2
Read mode	TIMED	TIMED			

## 2.3 Aspect



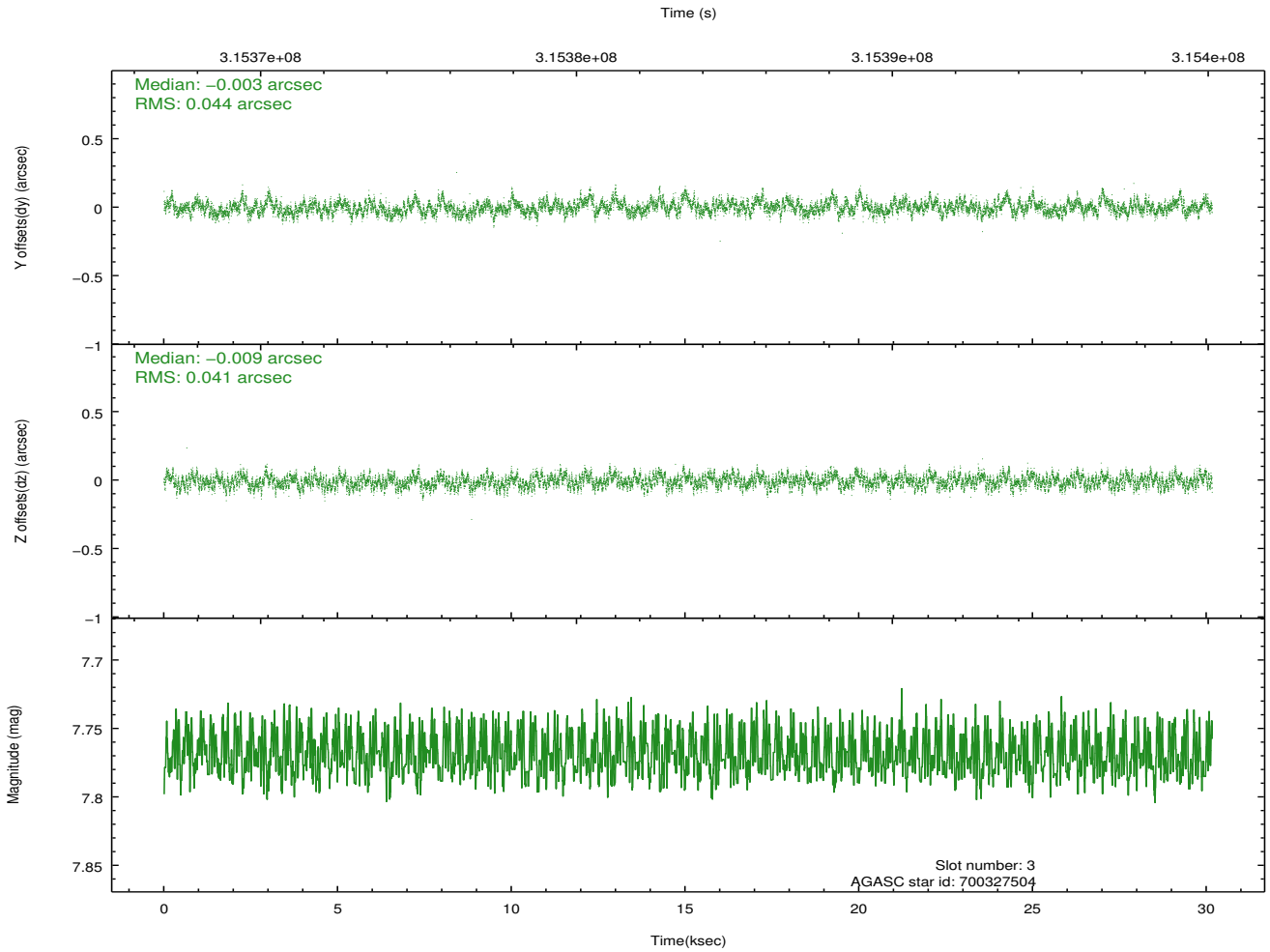
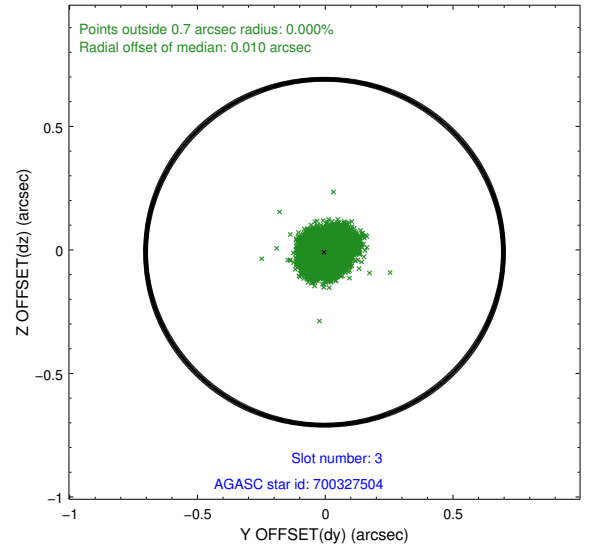
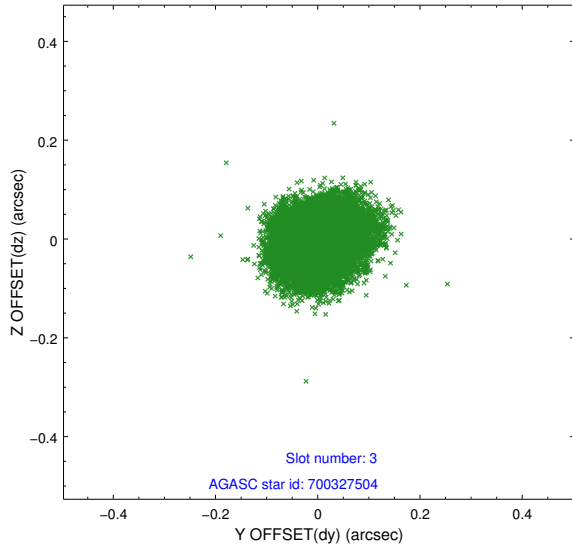


### Slot Statistics

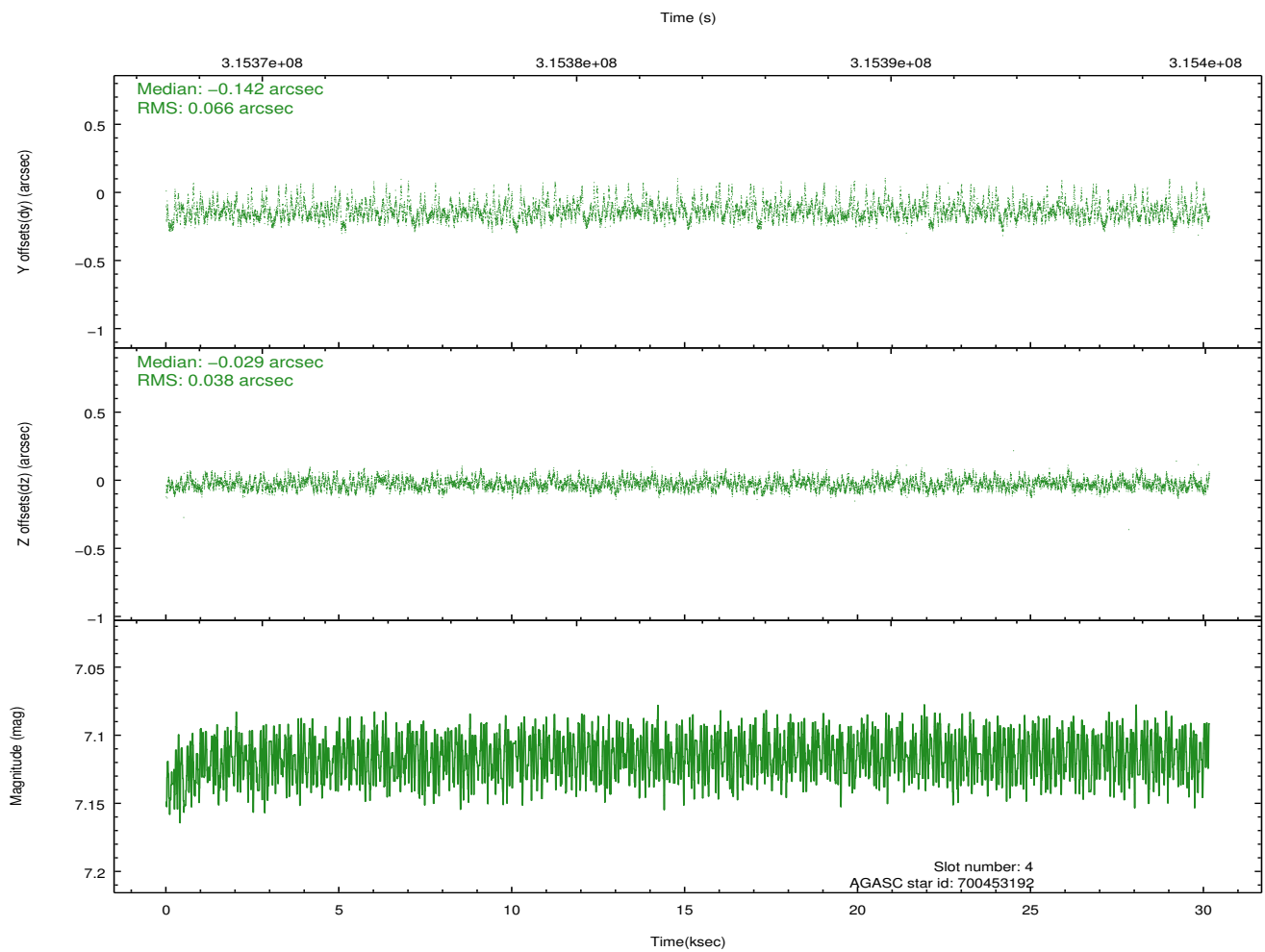
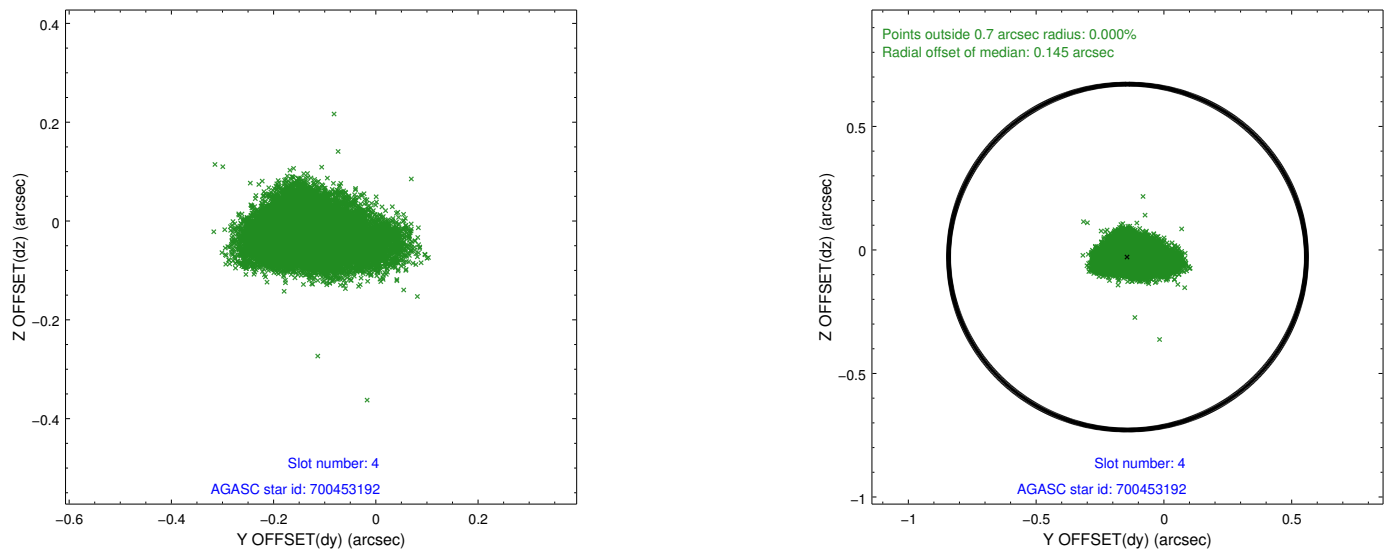
slot	status	id	mag	n_pts	med_dy	med_dz	dr1	dr2	ra	dec	mean_y	mean_z
0	FID	ACIS-I-1	7.23	7357	0.028	0.015	0.018	0.031	0.000000	0.000000	926.14	-838.01
1	FID	ACIS-I-5	7.22	7355	-0.210	0.036	0.008	0.014	0.000000	0.000000	-1822.18	1059.44
2	FID	ACIS-I-6	7.23	7357	0.091	0.020	0.016	0.030	0.000000	0.000000	391.64	1704.04
3	GUIDE	700327504	7.77	14706	-0.003	-0.009	0.064	0.103	80.303996	-14.152451	-1698.42	-1189.50
4	GUIDE	700453192	7.12	14715	-0.142	-0.029	0.077	0.143	80.462464	-13.755686	-1806.66	338.42
5	GUIDE	700456488	7.56	14706	0.080	0.051	0.063	0.112	81.663327	-13.859507	2154.37	1779.45
6	GUIDE	700459584	7.95	14706	0.051	-0.004	0.057	0.094	81.609322	-14.049207	2272.09	1080.60
7	GUIDE	700318000	7.80	14708	-0.001	-0.008	0.061	0.094	80.340351	-14.555377	-964.37	-2447.30

## 2.4 Star Slots

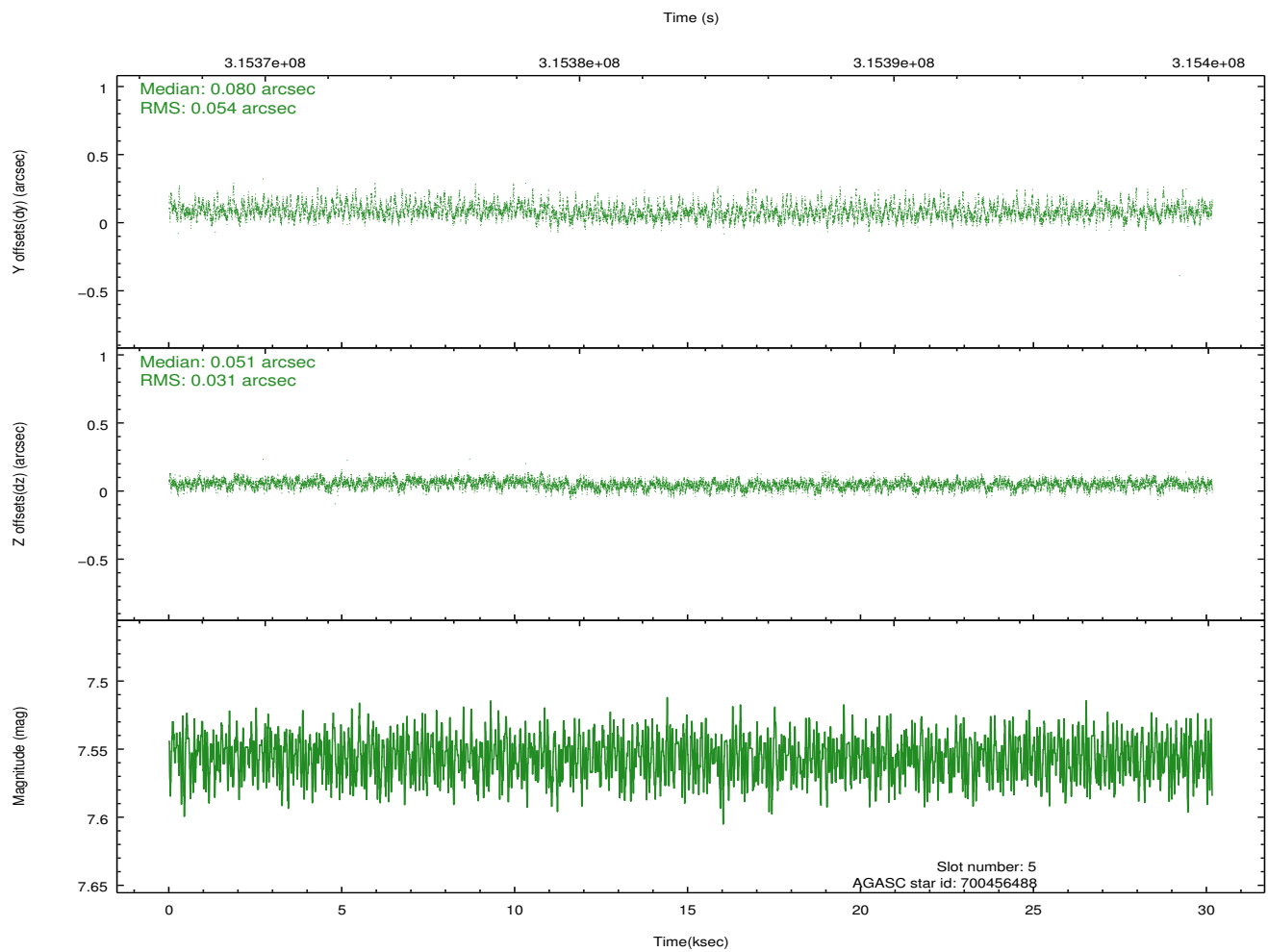
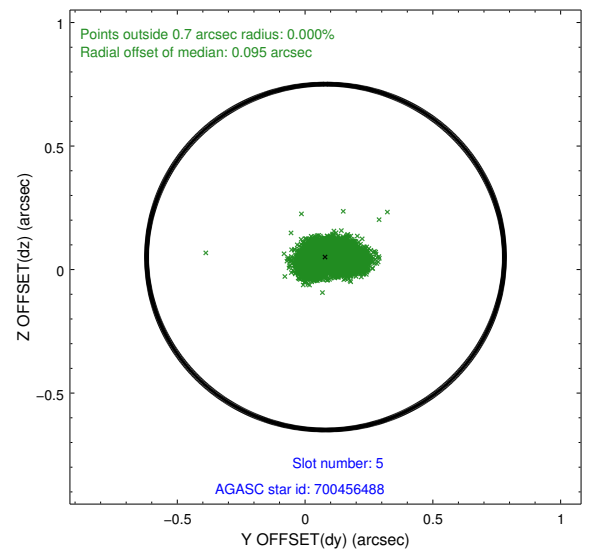
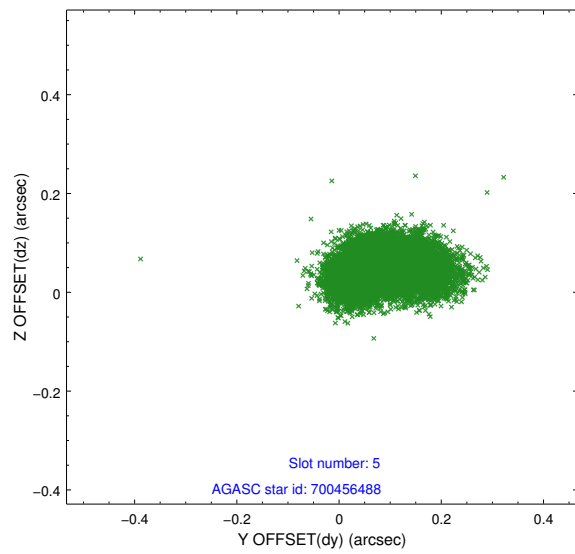
### 2.4.1 Slot 3



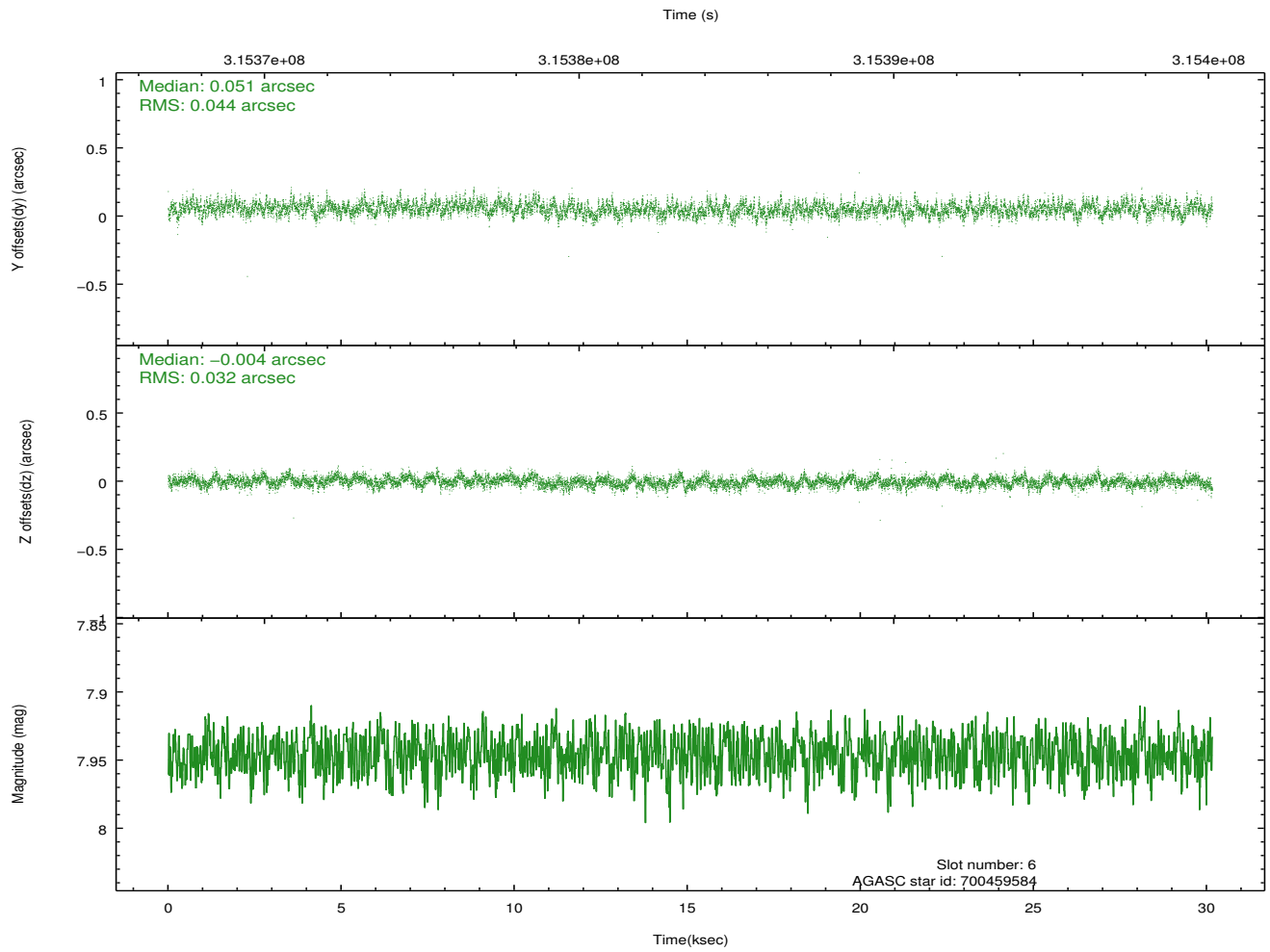
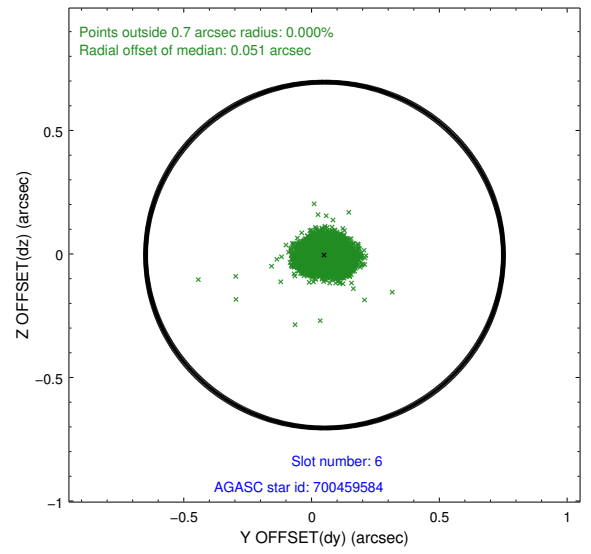
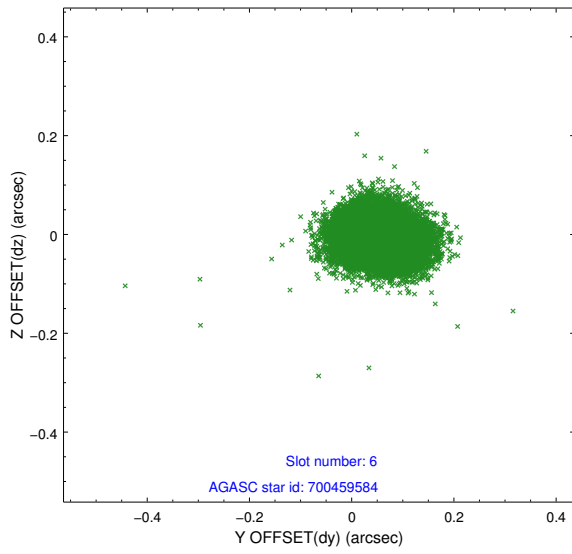
## 2.4.2 Slot 4



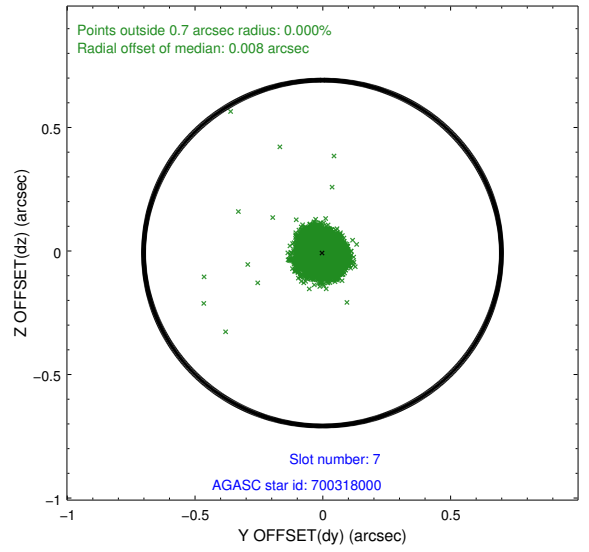
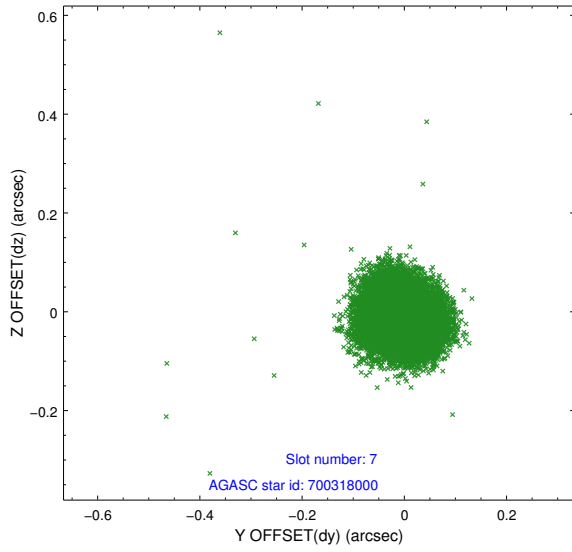
### 2.4.3 Slot 5



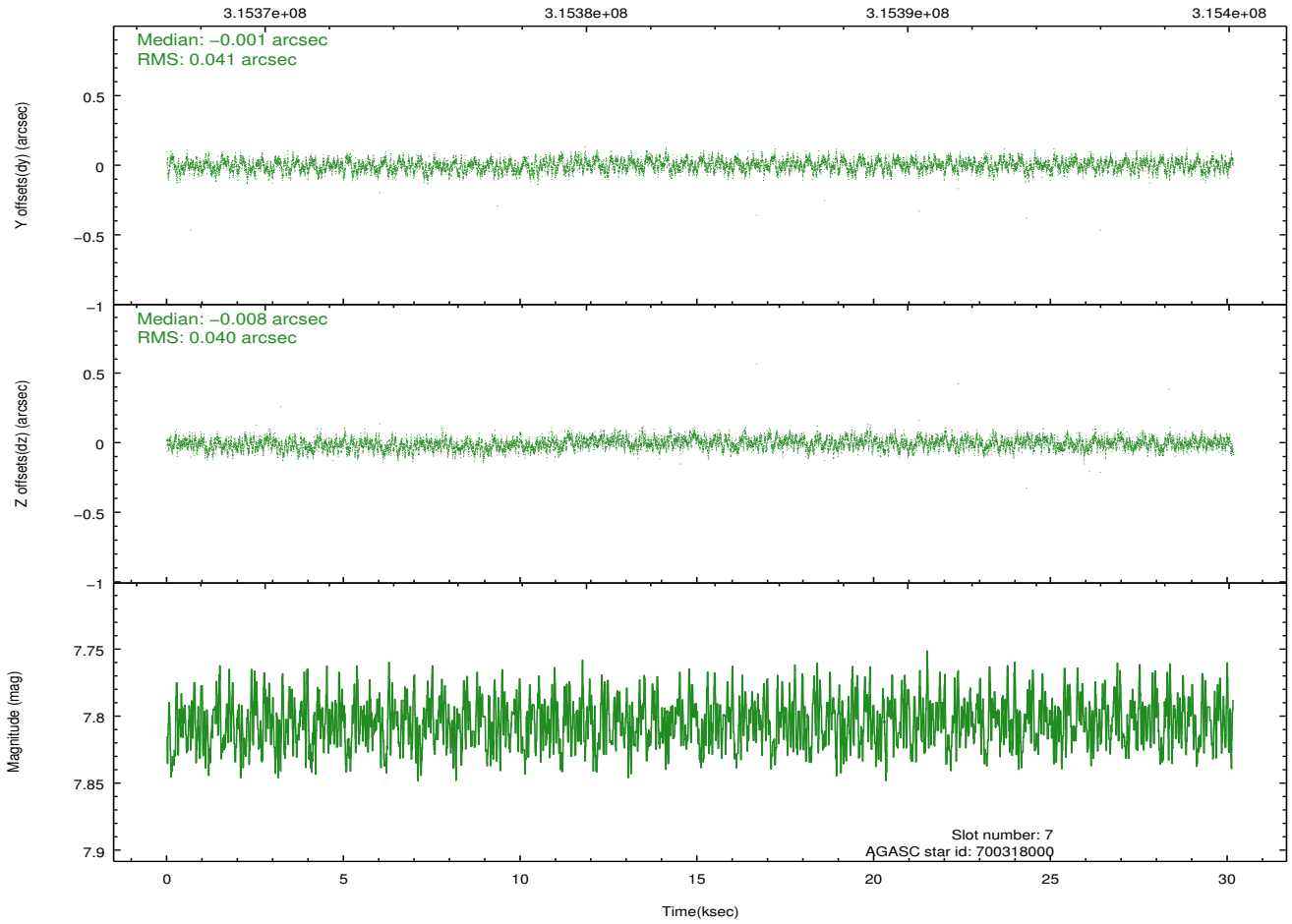
## 2.4.4 Slot 6



### 2.4.5 Slot 7

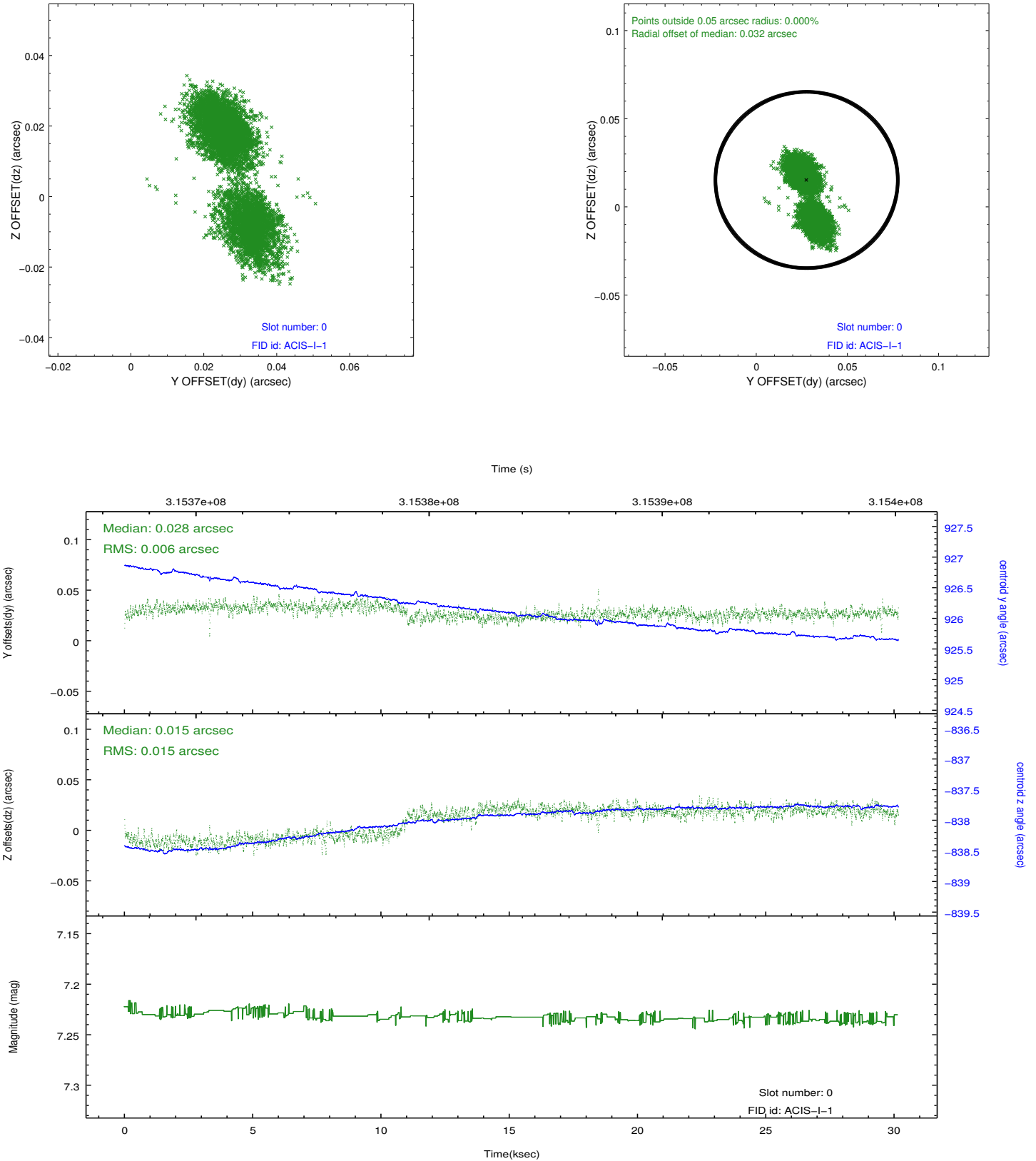


Time (s)

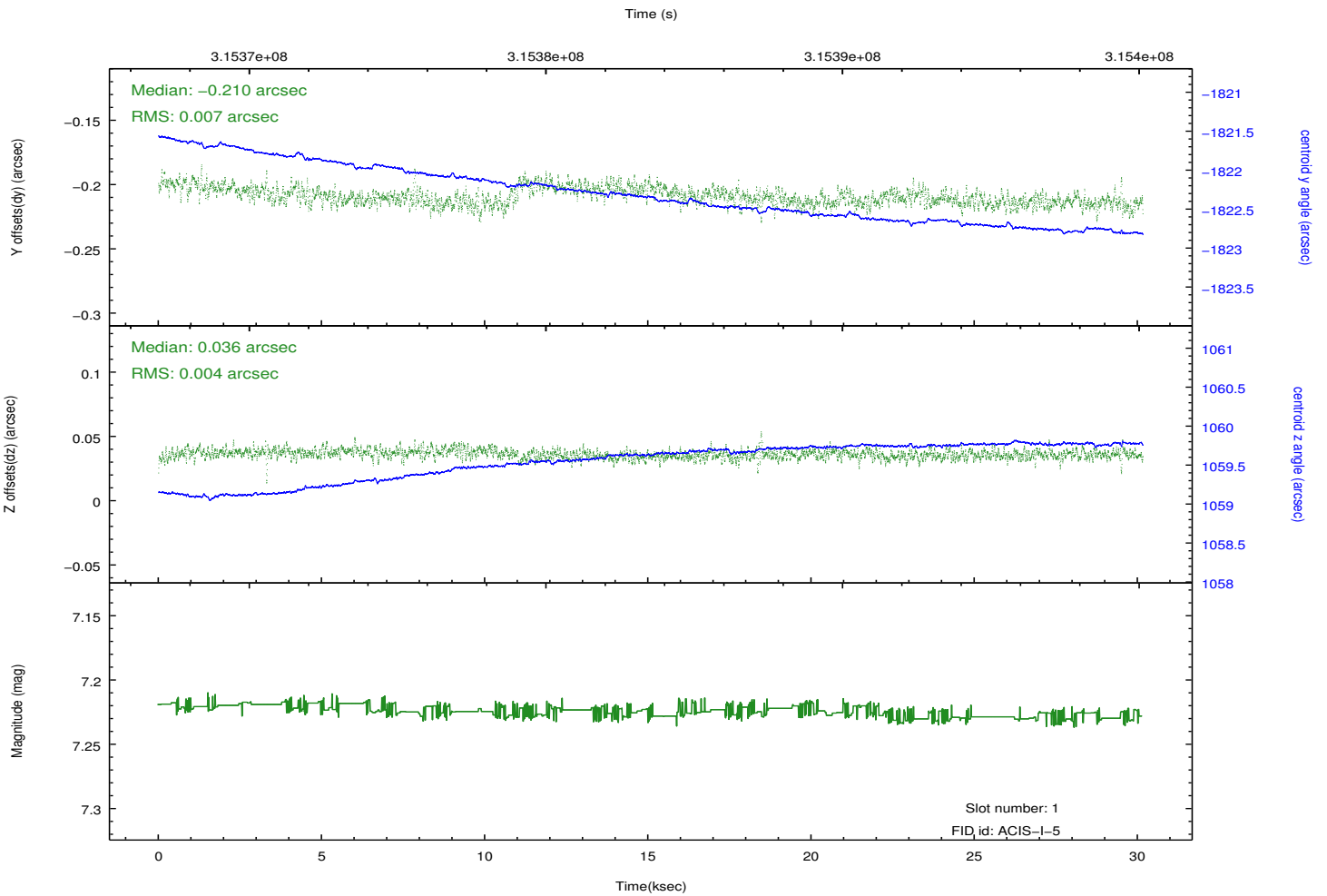
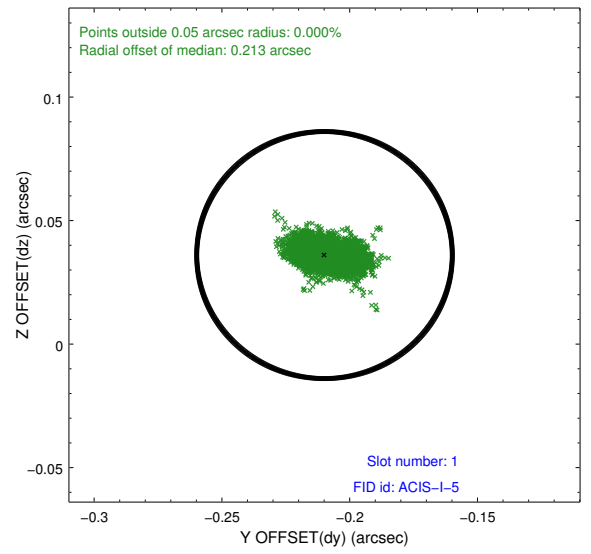
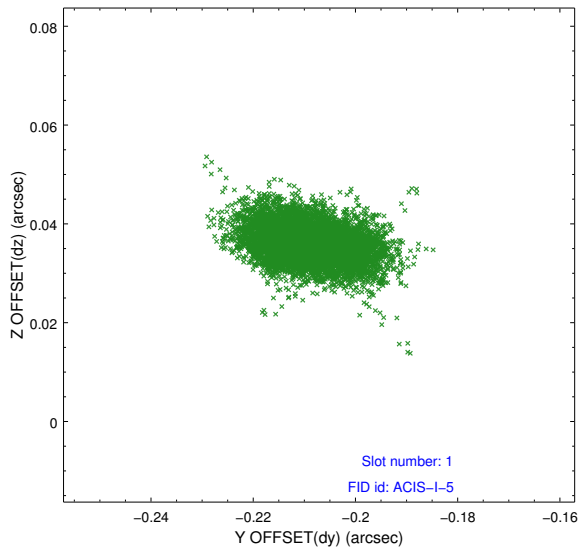


## 2.5 FID Slots

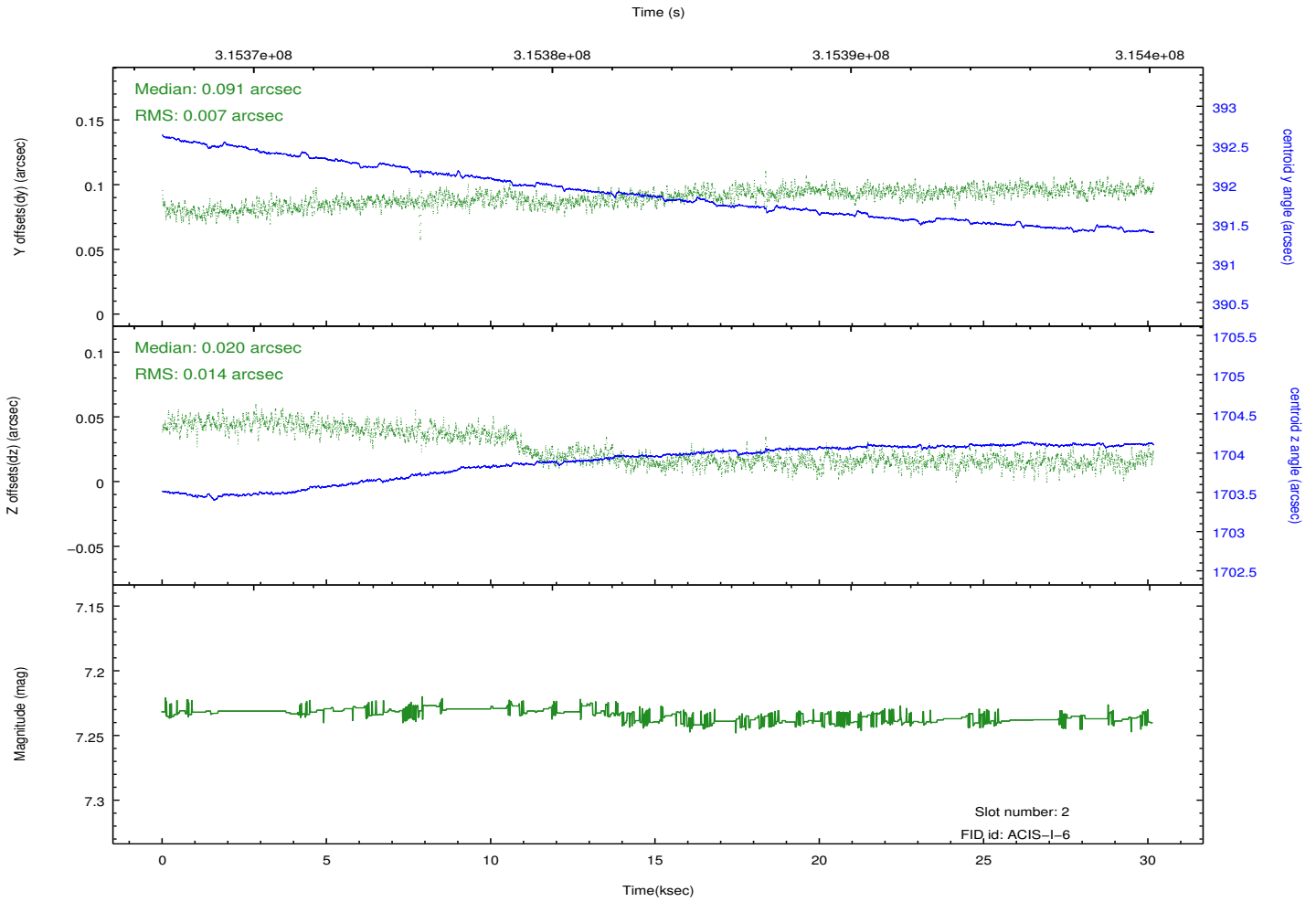
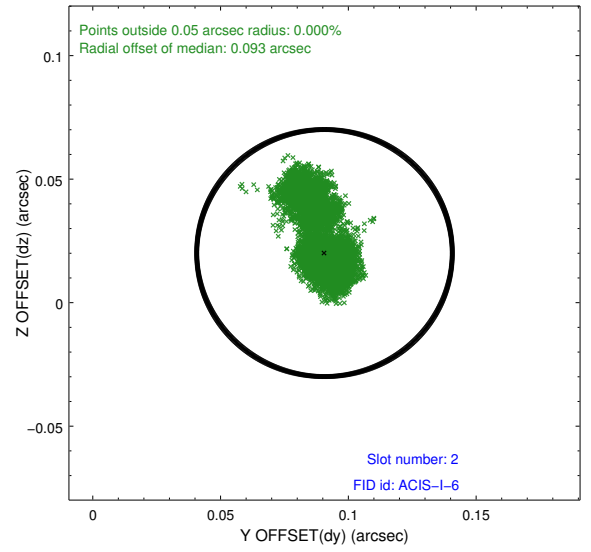
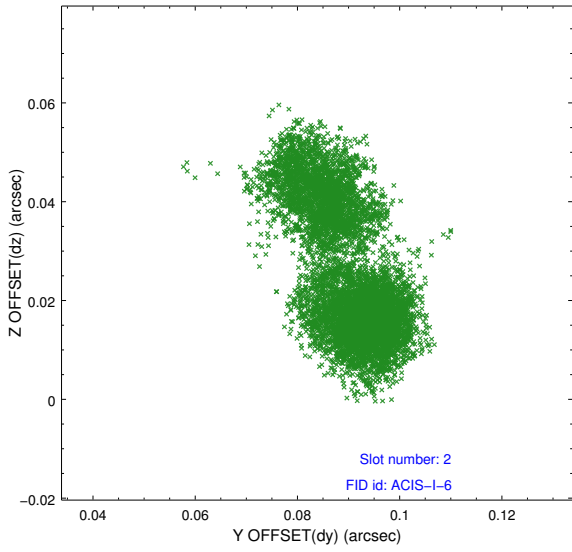
### 2.5.1 Slot 0



## 2.5.2 Slot 1



### 2.5.3 Slot 2



# A Summary

## A.1 Status

V&V Scientist	Jen Lauer
V&V Date (YYYY-MM-DD)	2012.05.08
V&V Edition	1
V&V Disposition and Status	OK
V&V Charge Time	30.1567998

## A.2 Comments

Time constraint met. Coordinated with NOAA.