

V&V Reference Report

L2 ASCDS Version : 8.4.4

Observation 9171 - L2 Version 2
Chandra X-Ray Center

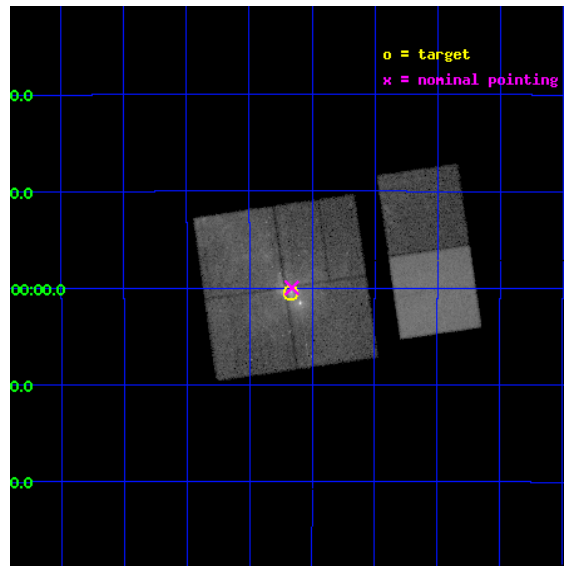
L2 Processing Date : May 14 2012

Contents

1	Front	2
2	OBI	3
2.1	OBI	3
2.1.1	Images	3
2.1.2	Bias	3
2.1.3	Parameters	4
2.1.4	Events	4
2.2	Compared Parameters	5
2.3	Aspect	6
2.4	Star Slots	9
2.4.1	Slot 3	9
2.4.2	Slot 4	10
2.4.3	Slot 5	11
2.4.4	Slot 6	12
2.4.5	Slot 7	13
2.5	FID Slots	14
2.5.1	Slot 0	14
2.5.2	Slot 1	15
2.5.3	Slot 2	16
A	Summary	17
A.1	Status	17
A.2	Comments	17

1 Front

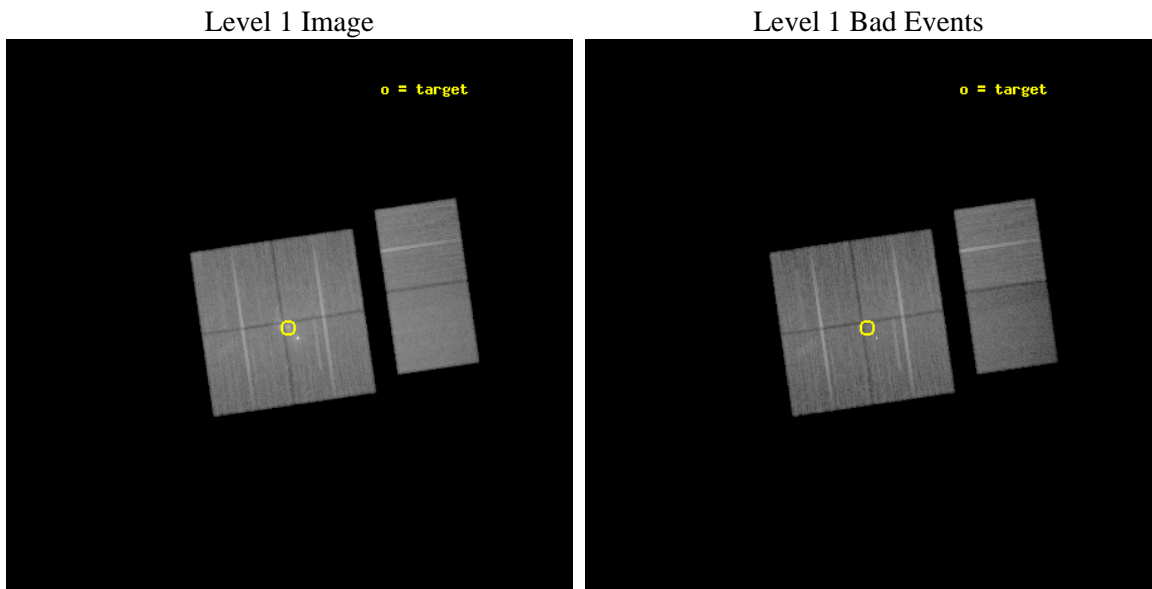
seq_num	701613	Sequence number
obs_id	9171	Observation id
title	Simultaneous Chandra, VLT, and APEX Observations of Sgr A*	Proposa
observer	Prof Farhad Yusef-Zadeh	Principal investigator
object	Sgr A*	Source name
dtycycle	0	
cycle	P	events from which exps? Prim/Second/Both
ra_targ	266.416667	Observer's specified target RA [deg]
dec_targ	-29.007806	Observer's specified target Dec [deg]
ra_nom	266.41521632316	Nominal RA [deg]
dec_nom	-28.999803648993	Nominal Dec [deg]
roll_nom	81.707983136916	Nominal Roll [deg]
revision	2	Processing version of data
ontime	28040.997132301	Sum of GTIs [s]
livetime	27685.925142351	Livetime [s]
ontime0	28044.114992857	Sum of GTIs [s]
ontime1	28037.674052238	Sum of GTIs [s]
ontime2	28044.197072864	Sum of GTIs [s]
ontime3	28040.997132301	Sum of GTIs [s]
ontime6	28044.320192873	Sum of GTIs [s]
ontime7	28044.27915287	Sum of GTIs [s]
l2events	341762	Number of level 2 events



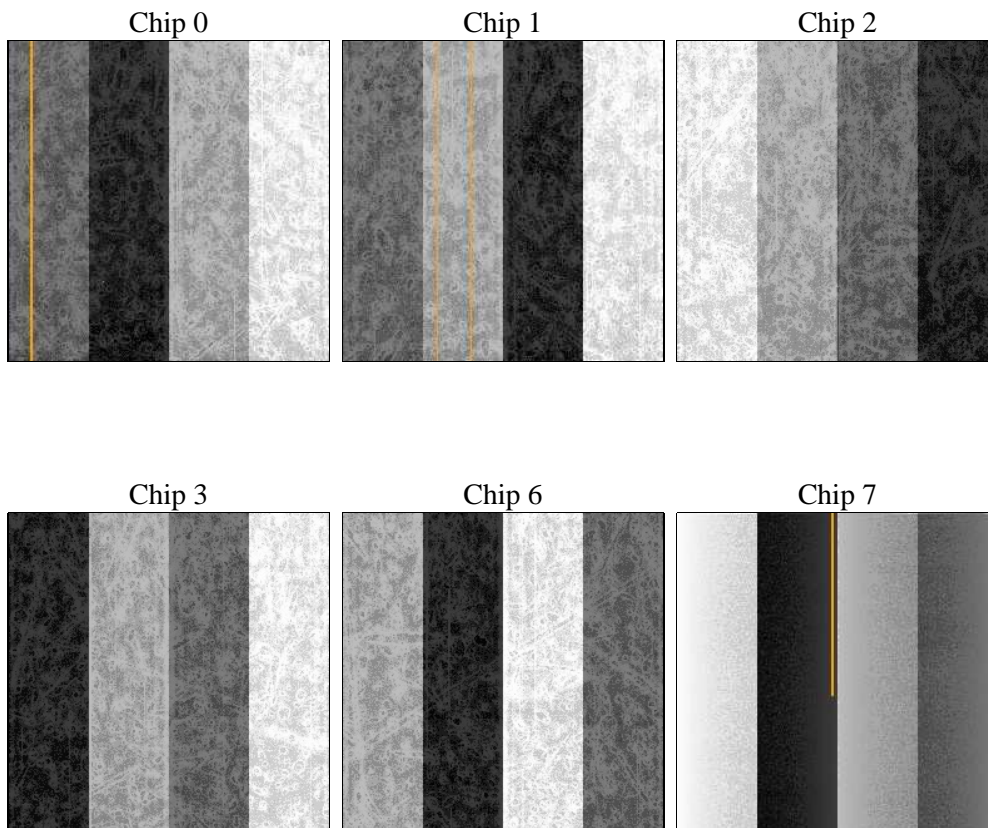
2 OBI

2.1 OBI

2.1.1 Images



2.1.2 Bias



2.1.3 Parameters

obi_num	1	Obi number	sched_exp_time	28000.000000	[s] Scheduled observation exposure time
ascdsver	8.4.4	Processing system revision	ontime	28040.997132301	Sum of GTIs [s]
caldbver	4.4.9	 	ontime0	28044.114992857	Sum of GTIs [s]
date	2012-05-14T03:09:10	Date and time of file creation	ontime1	28037.674052238	Sum of GTIs [s]
revision	2	Processing version of data	ontime2	28044.197072864	Sum of GTIs [s]
			ontime3	28040.997132301	Sum of GTIs [s]
			ontime6	28044.320192873	Sum of GTIs [s]
			ontime7	28044.27915287	Sum of GTIs [s]
			l1events	1499158	Number of level 1 events

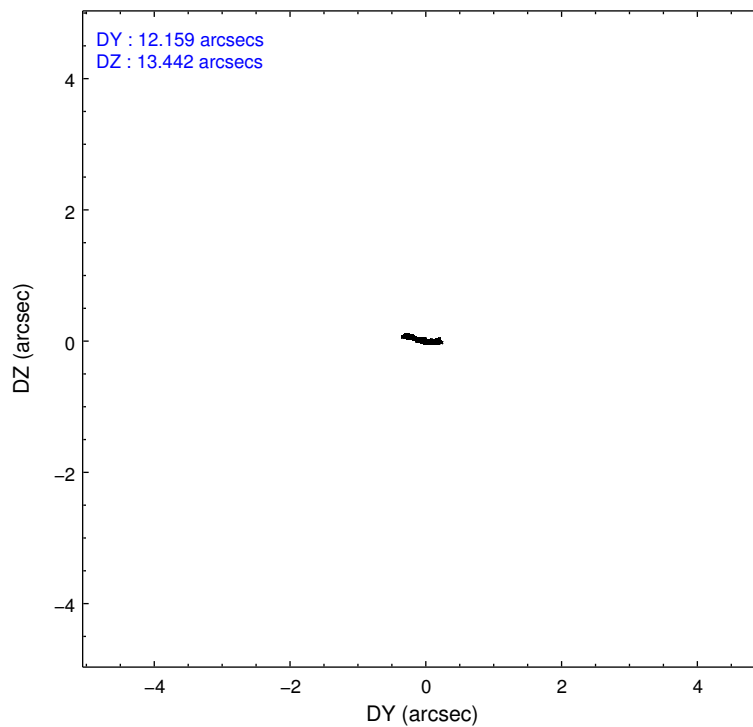
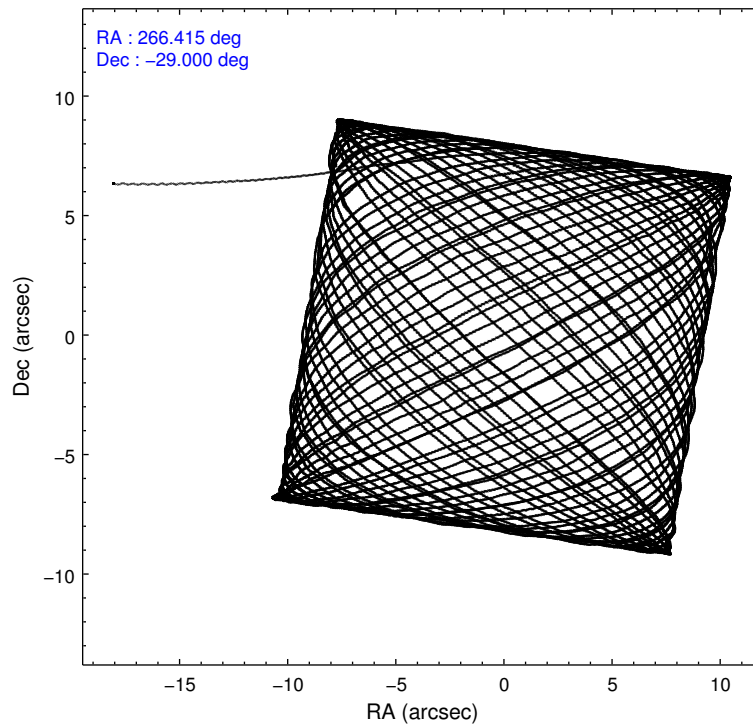
2.1.4 Events

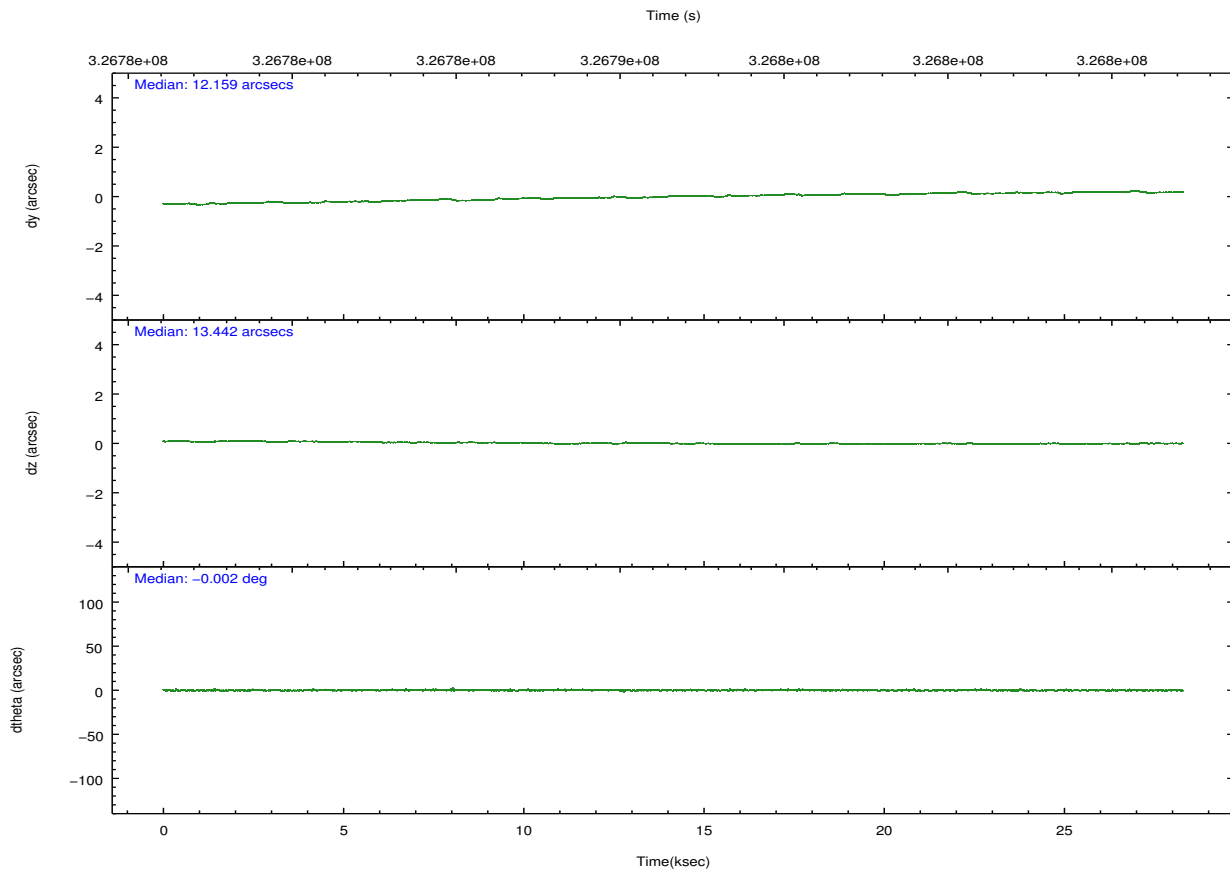
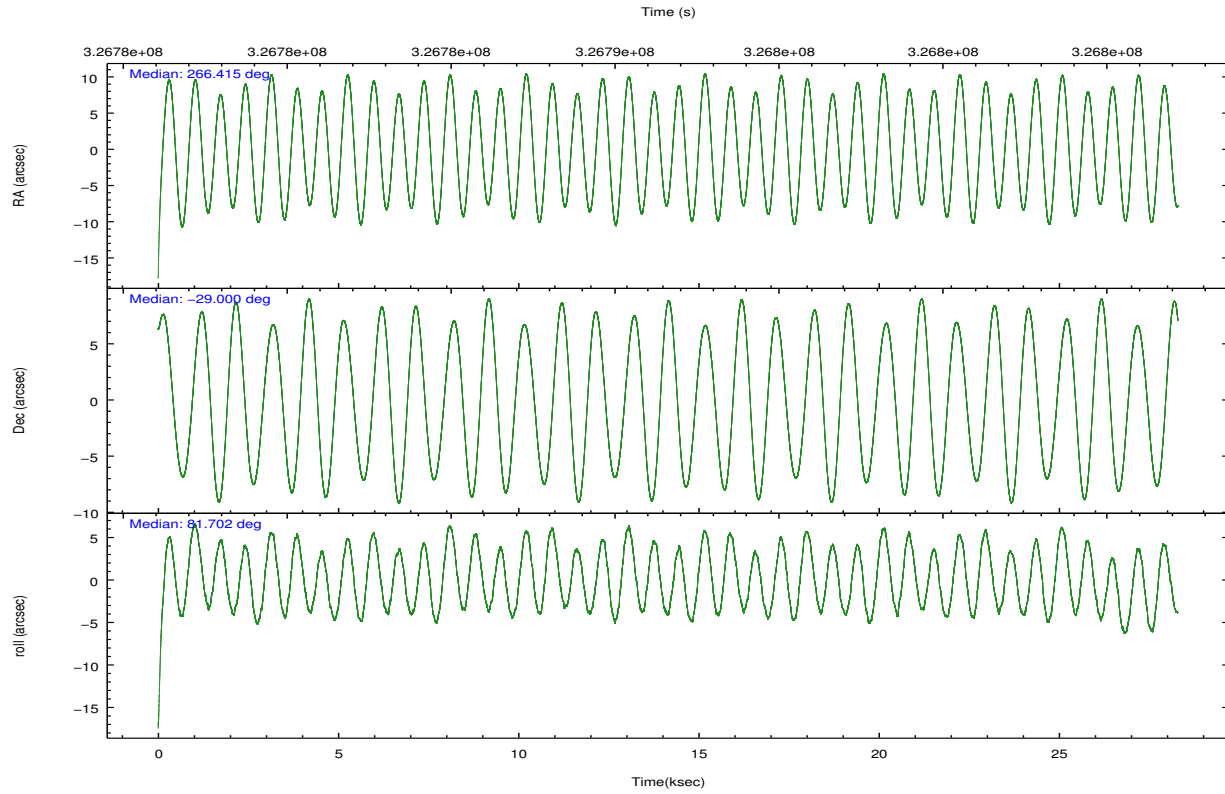
	ccd 0	ccd 1	ccd 2	ccd 3	ccd 6	ccd 7		ccd 0	ccd 1	ccd 2	ccd 3	ccd 6	ccd 7
level 1 events	244892	236176	250379	269389	239426	258896	grade 0 events	35513	26664	22227	35784	11679	11511
rejected events	182712	185288	207559	203808	210701	137775		14%	11%	8%	13%	4%	4%
rejected %	74%	78%	82%	75%	88%	53%	grade 1 events	305	236	230	1187	139	335
								0%	0%	0%	0%	0%	0%
							grade 2 events	10871	9387	8094	11295	5990	25292
								4%	3%	3%	4%	2%	9%
							grade 3 events	4482	3841	3339	4907	2834	11192
								1%	1%	1%	1%	1%	4%
							grade 4 events	4254	3851	3464	4770	2726	11067
								1%	1%	1%	1%	1%	4%
							grade 5 events	8093	8769	7744	10438	9492	26910
								3%	3%	3%	3%	3%	10%
							grade 6 events	7066	7153	5702	8833	5497	62072
								2%	3%	2%	3%	2%	23%
							grade 7 events	174308	176275	199579	192175	201069	110517
								71%	74%	79%	71%	83%	42%

2.2 Compared Parameters

Parameter	Planned	Actual	Parameter	Planned	Actual
Instrument	ACIS	ACIS	Obspar format version number	7	7
Detector	ACIS-012367	ACIS-012367	Obspar file type	PREDICTED	ACTUAL
Grating	NONE	NONE	Obspar update status	NONE	UPDATED
Data mode	FAINT	FAINT	CCD I0 on	Y	Y
Observation mode	POINTING	POINTING	CCD I1 on	Y	Y
[deg] Pointing RA	266.426972	266.4152163231561	CCD I2 on	Y	Y
[deg] Pointing Dec	-29.025324	-28.99980364899299	CCD I3 on	Y	Y
[deg] Pointing Roll	81.504999	81.7079831369156	CCD S0 on	N	N
[mm] SIM focus pos	-0.782348	-0.7809083437167272	CCD S1 on	N	N
[mm] SIM defocus	0	0.001439871863259334	CCD S2 on	O2	Y
[mm] SIM translation stage pos	-233.592463	-233.5874344608287	CCD S3 on	O1	Y
[mm] SIM translation stage offset	0	-0.005018542100998502	CCD S4 on	N	N
Phase constraints	Y	Y	CCD S5 on	N	N
[d] Phase period	0.997270	0.997270	Number of optional ACIS chips dropped	0	0
[d] Phase epoch (MJD)	54587.160000	54587.160000	On-chip summing requested	N	N
Phase start	0.000000	0.000000	Subarray requested	NONE	NONE
Phase end	0.334000	0.334000	Alternating exposures requested	N	N
Phase start error	0.020000	0.020000	[s] Primary exposure time	0.000000	3.2
Phase end error	0.020000	0.020000			
[s] Observation start time (MET)	326777761.184000	326776682.68675			
Observation start date	2008-05-10T03:34:56	2008-05-10T03:18:02			
[s] Observation end time (MET)	326805761.184000	326805983.85068			
Observation end date	2008-05-10T11:21:36	2008-05-10T11:26:23			
Read mode	TIMED	TIMED			

2.3 Aspect



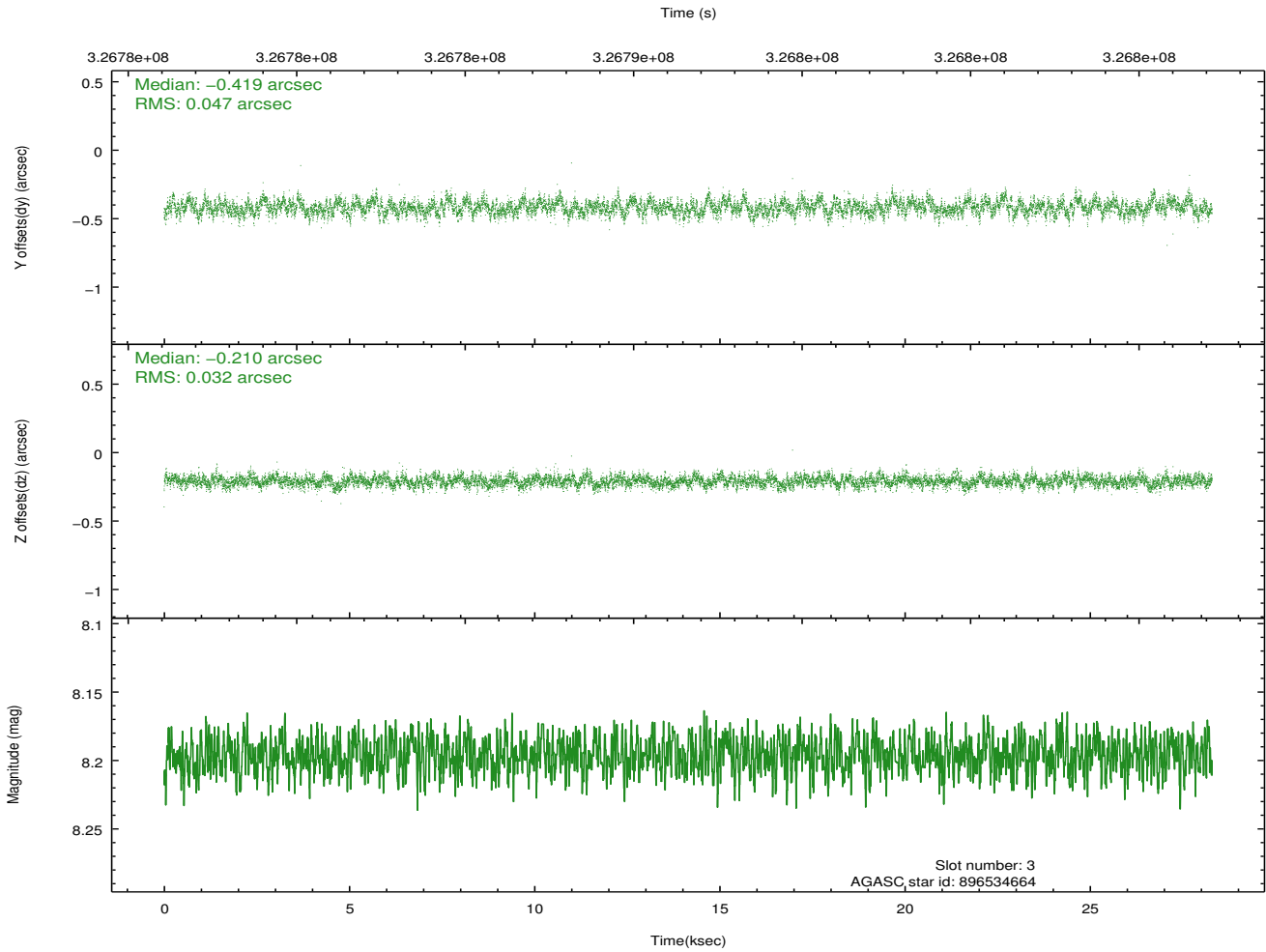
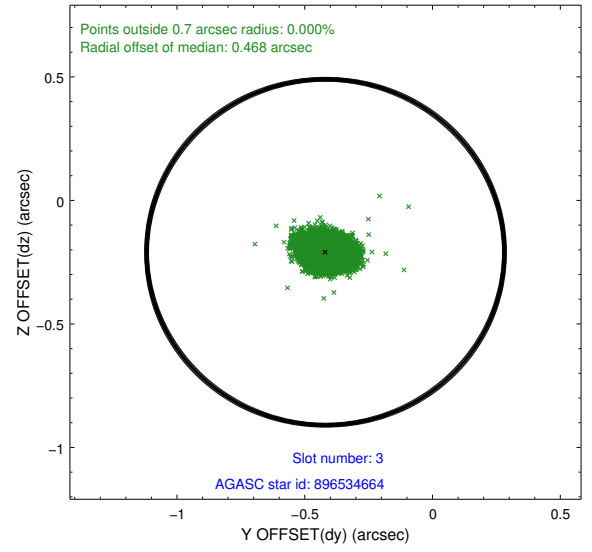
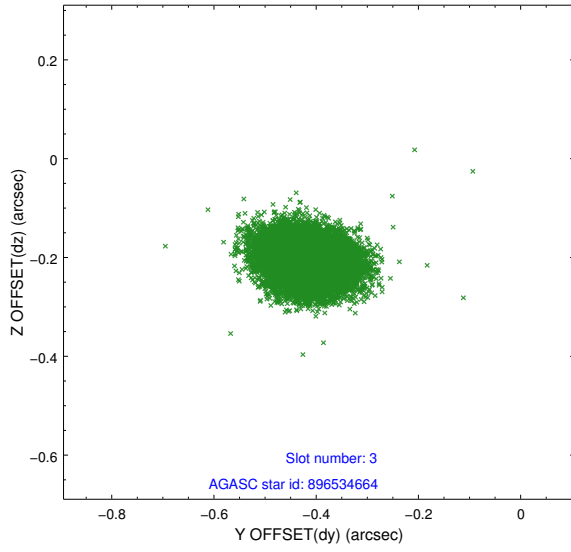


Slot Statistics

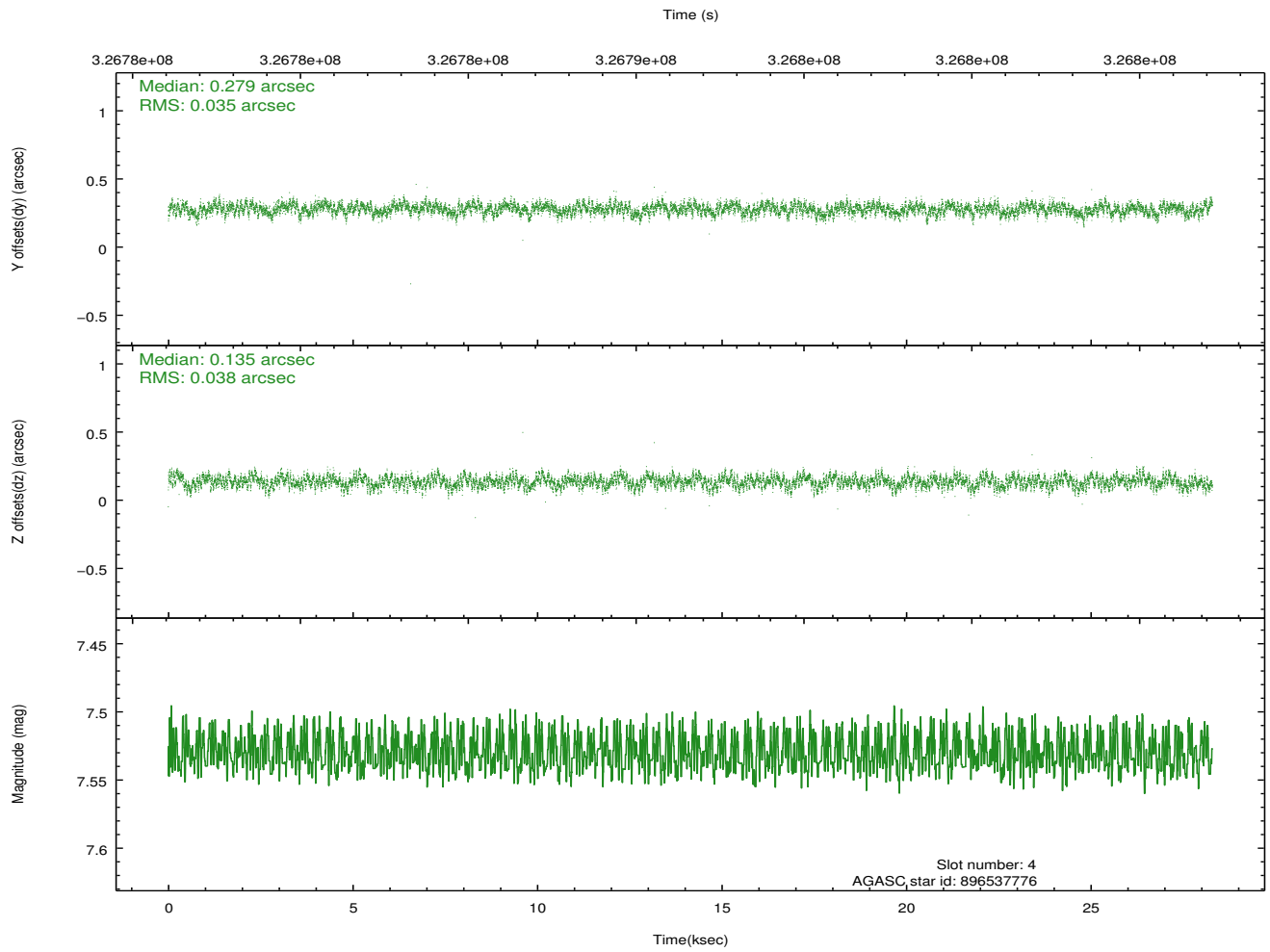
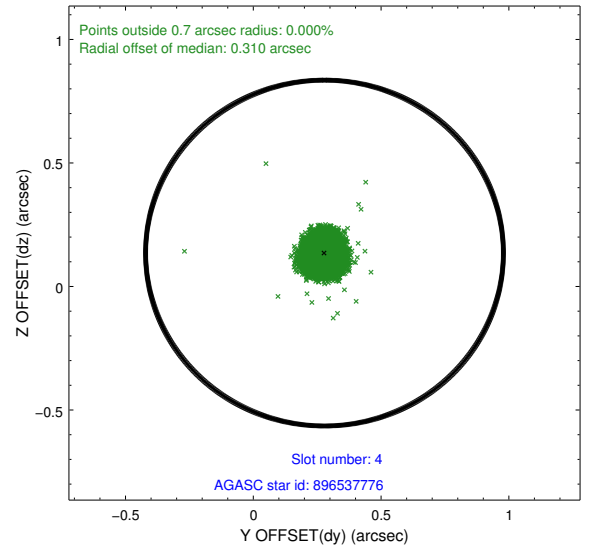
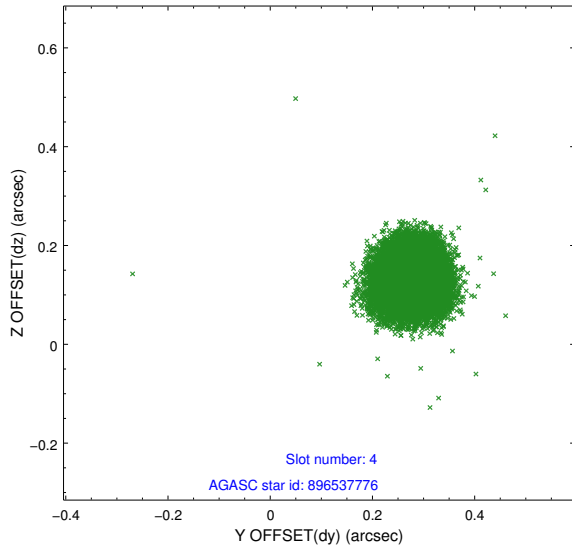
slot	status	id	mag	n_pts	med_dy	med_dz	dr1	dr2	ra	dec	mean_y	mean_z
0	FID	ACIS-I-1	7.03	6897	0.018	0.025	0.007	0.013	0.000000	0.000000	927.42	-836.99
1	FID	ACIS-I-5	7.02	6902	-0.168	0.040	0.007	0.012	0.000000	0.000000	-1820.83	1060.46
2	FID	ACIS-I-6	7.03	6893	0.059	0.005	0.007	0.012	0.000000	0.000000	392.90	1705.04
3	GUIDE	896534664	8.20	13798	-0.419	-0.210	0.060	0.098	266.405570	-28.407461	2189.53	395.81
4	GUIDE	896537776	7.53	13804	0.279	0.135	0.055	0.088	266.655684	-29.665673	-2174.33	-1048.21
5	GUIDE	896538208	7.97	13792	-0.127	0.212	0.063	0.100	267.176969	-28.671626	1601.99	-2155.52
6	GUIDE	896541576	8.19	13783	0.034	0.146	0.057	0.092	267.051055	-28.762912	1220.61	-1808.84
7	GUIDE	896403224	8.28	13802	0.230	-0.286	0.071	0.116	265.612825	-29.438915	-1858.46	2302.74

2.4 Star Slots

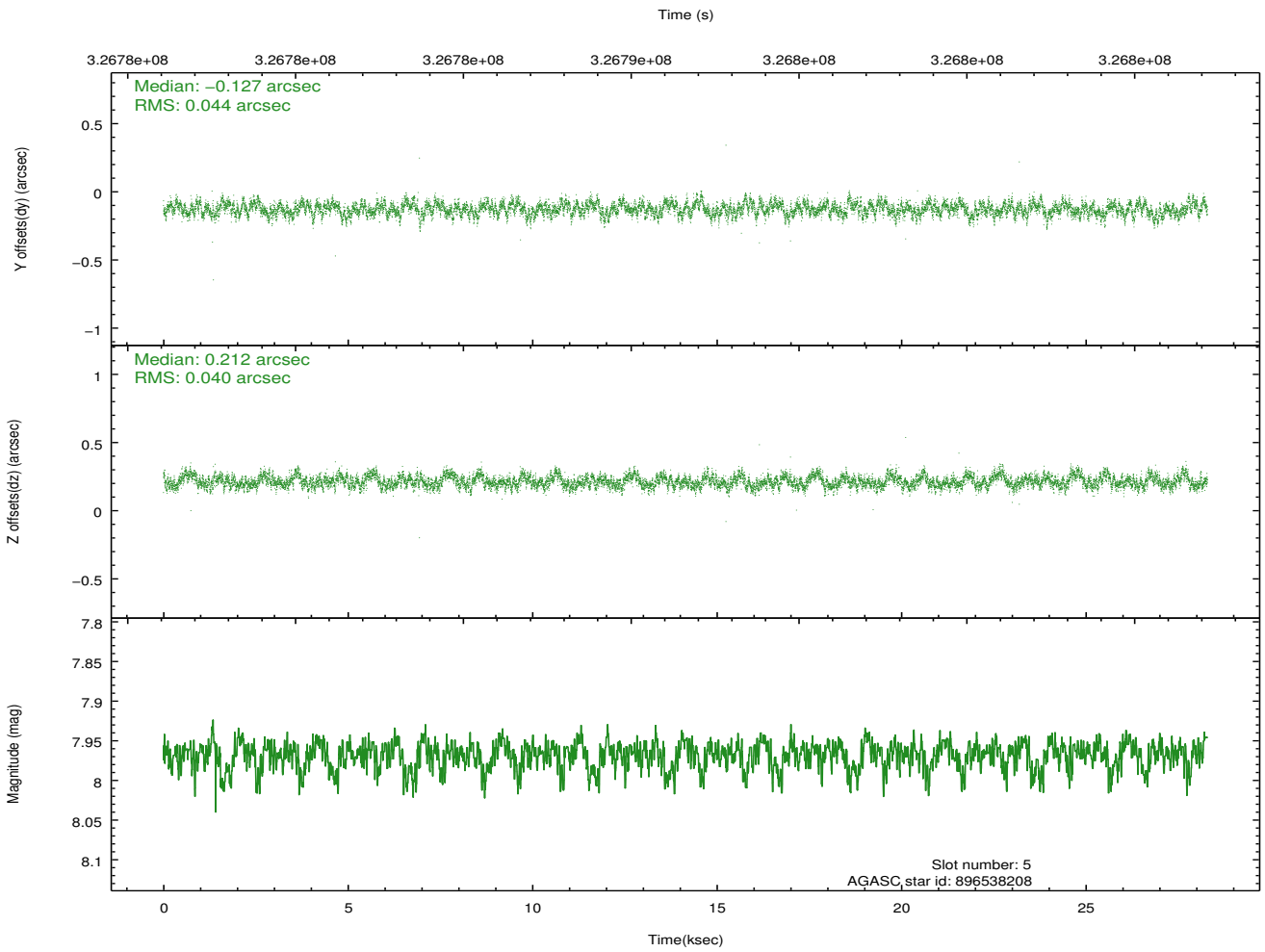
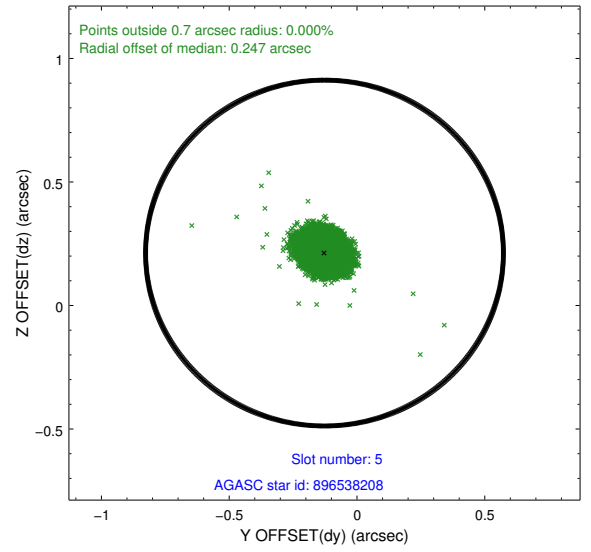
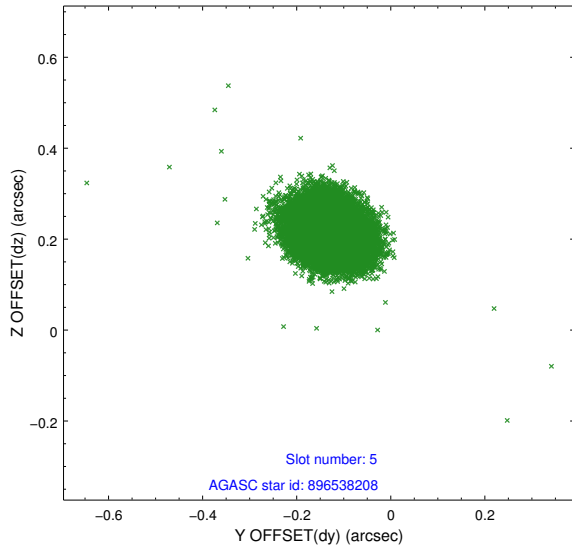
2.4.1 Slot 3



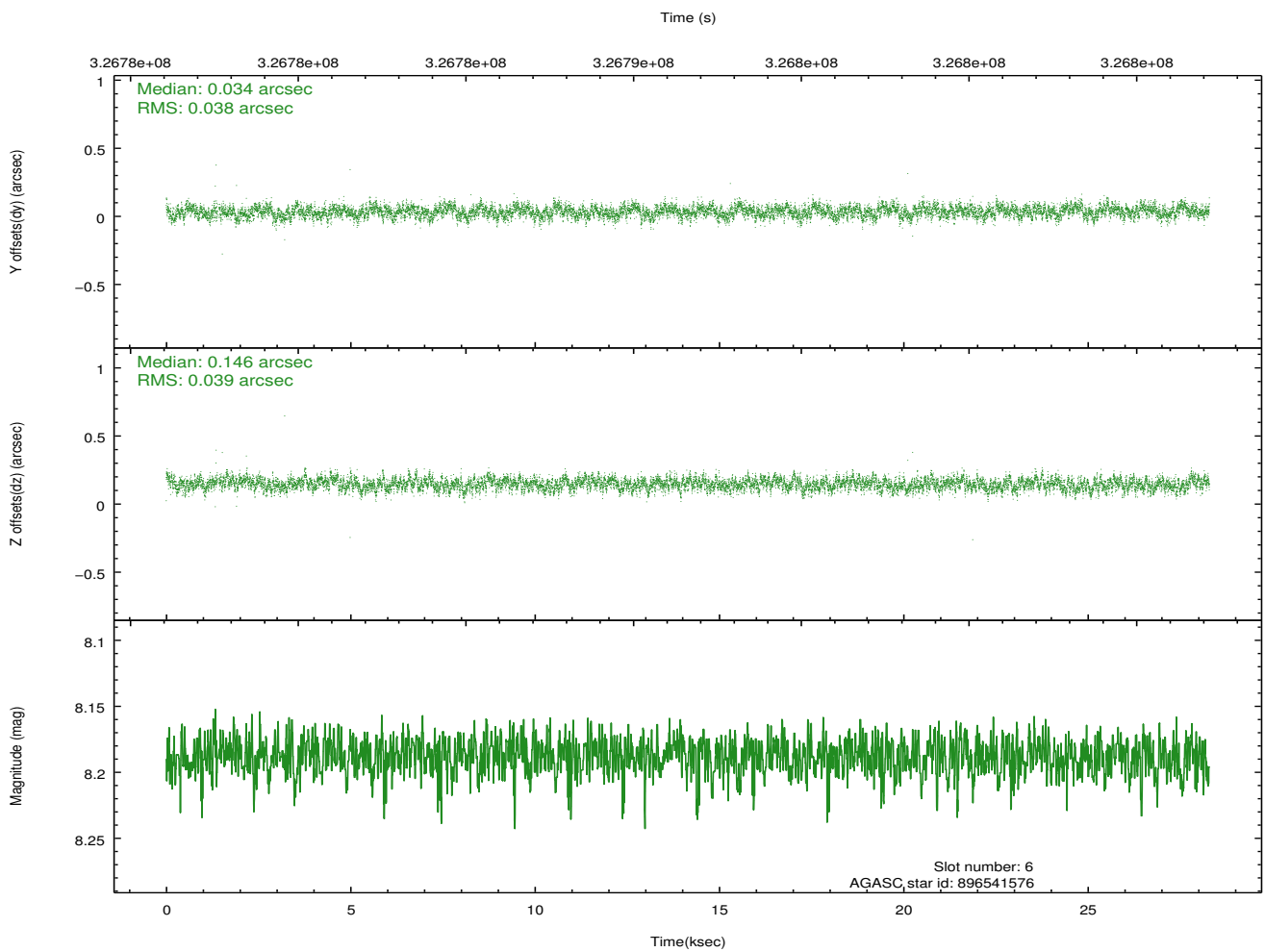
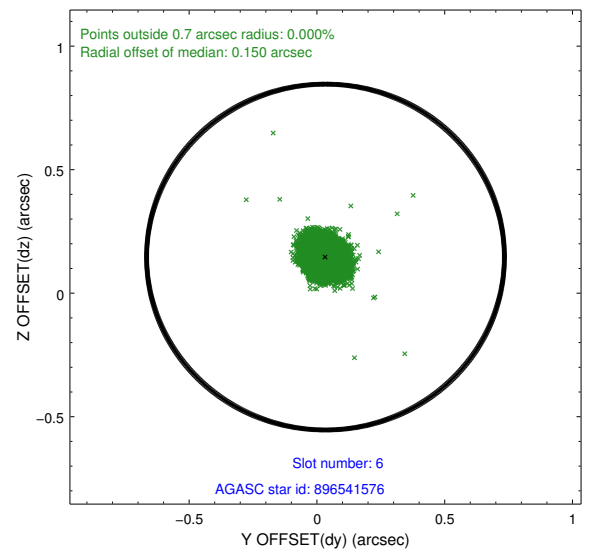
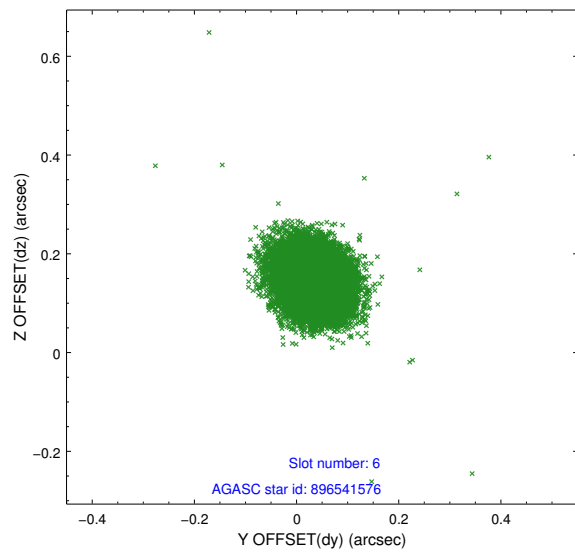
2.4.2 Slot 4



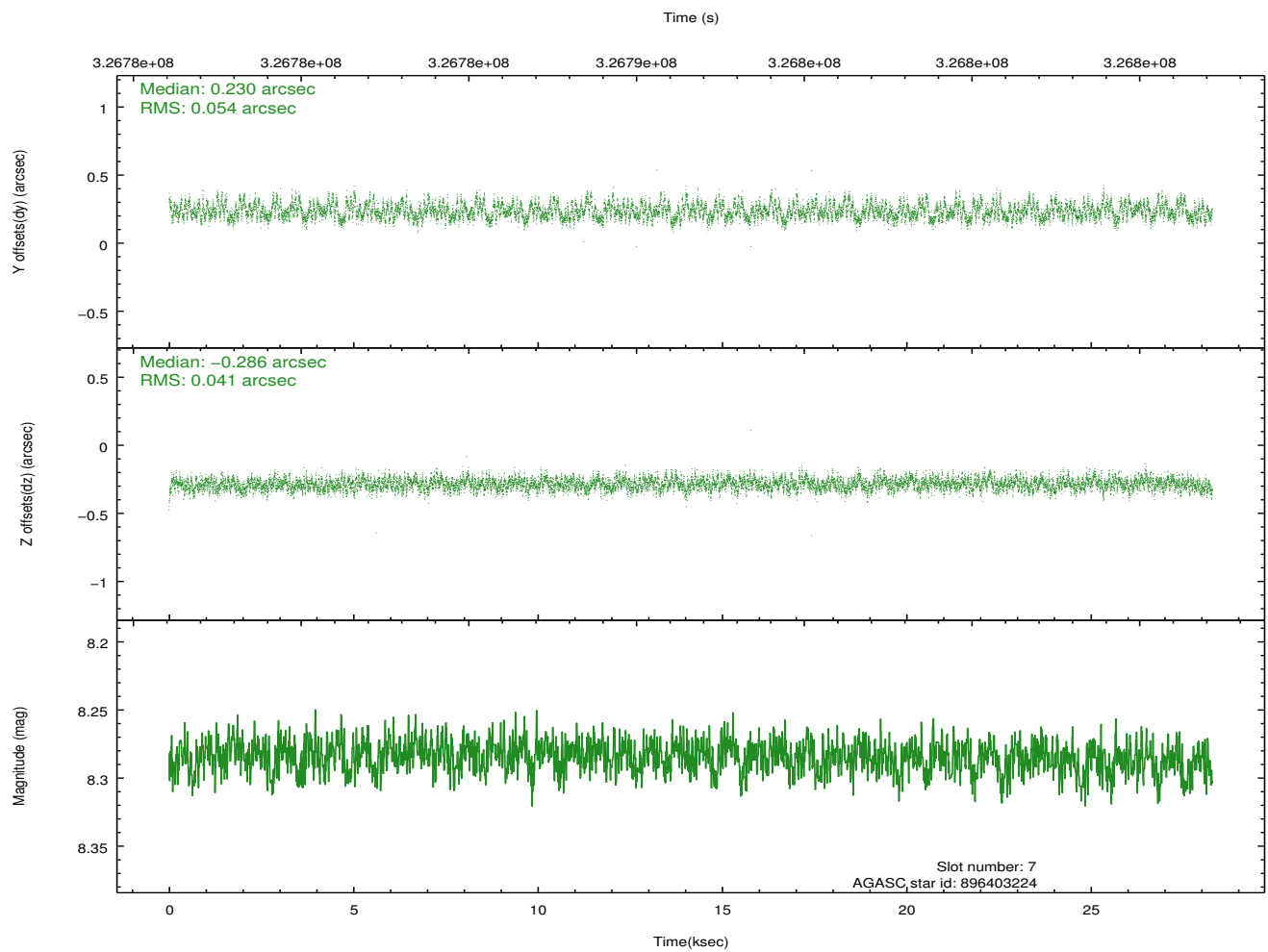
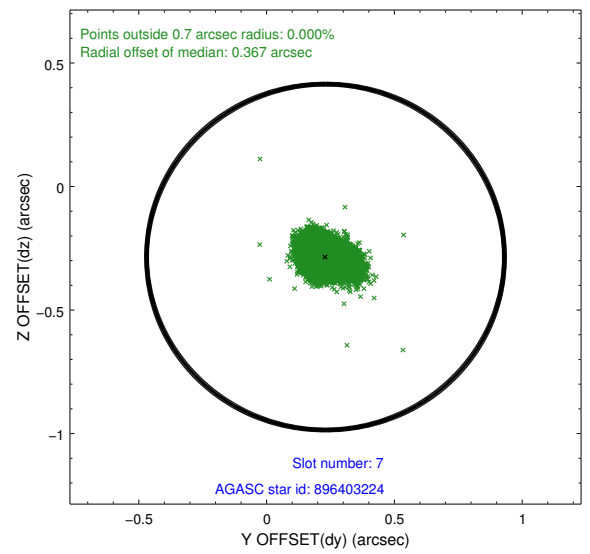
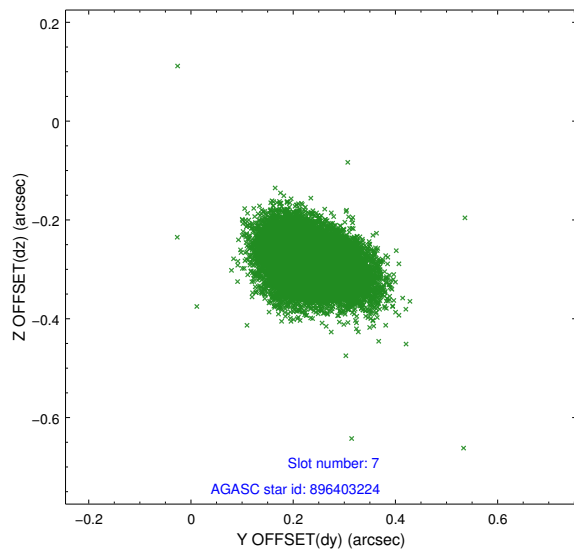
2.4.3 Slot 5



2.4.4 Slot 6

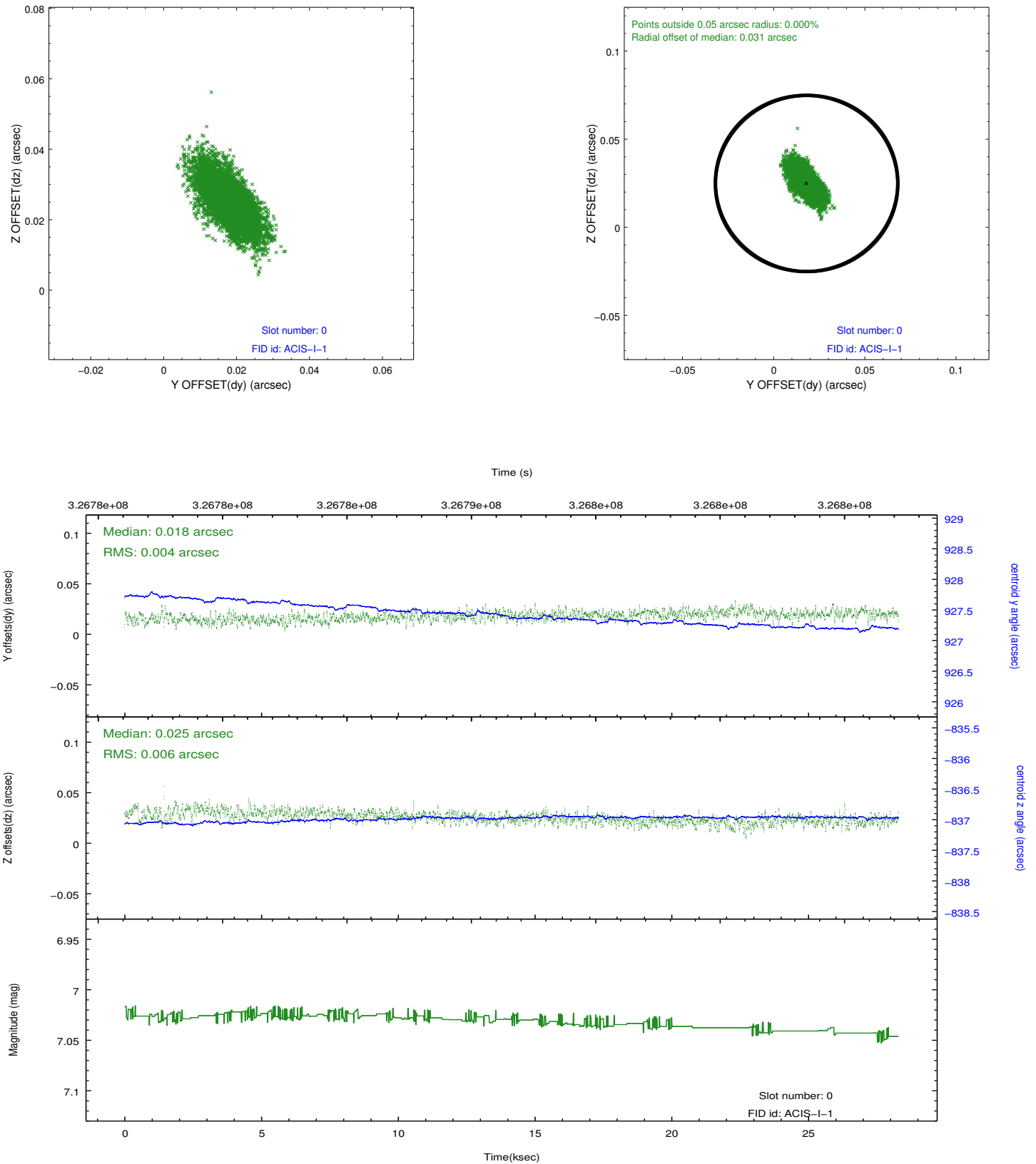


2.4.5 Slot 7

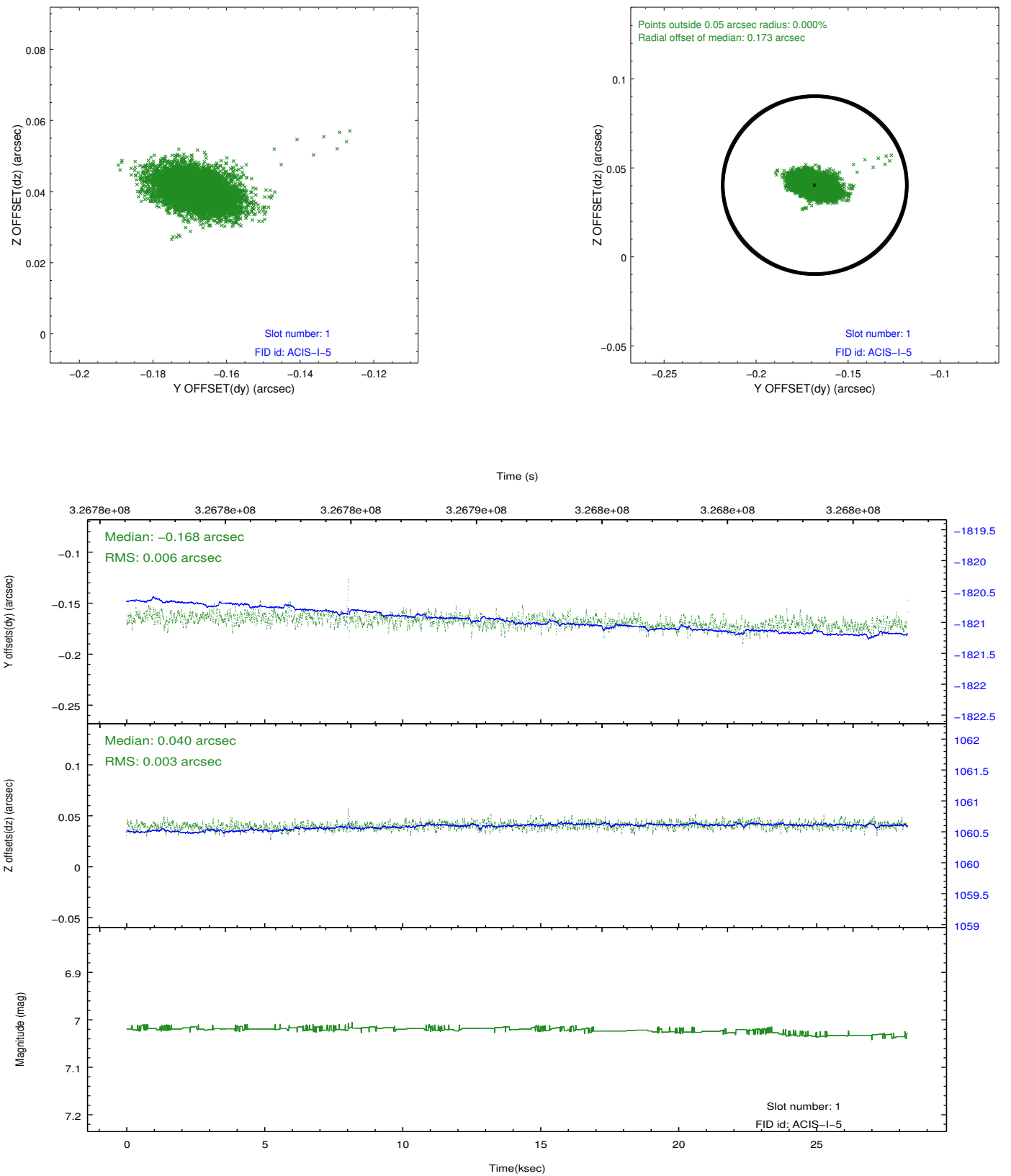


2.5 FID Slots

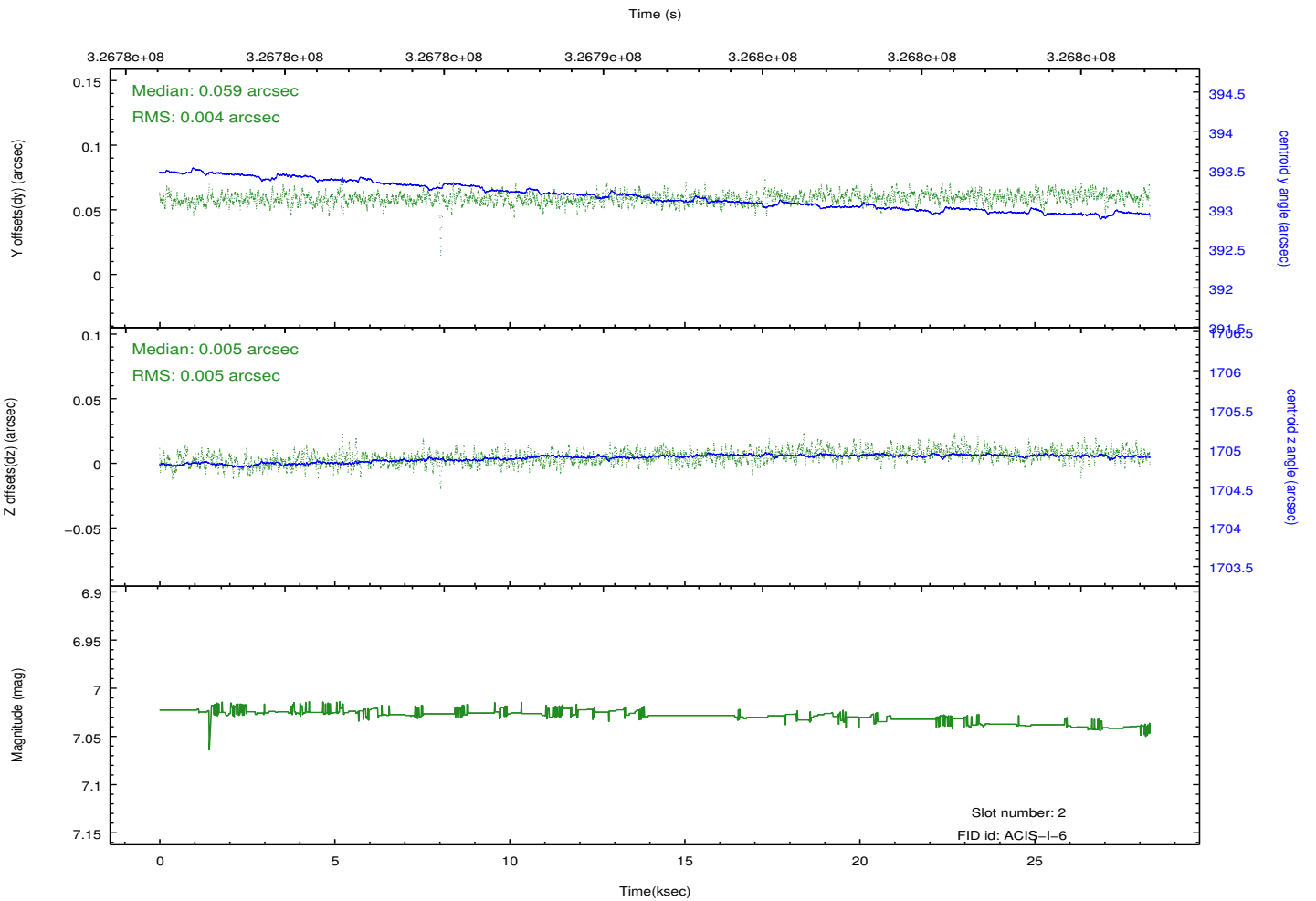
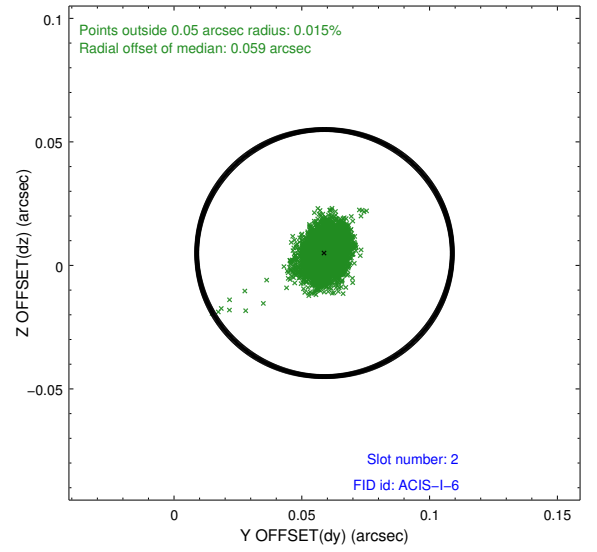
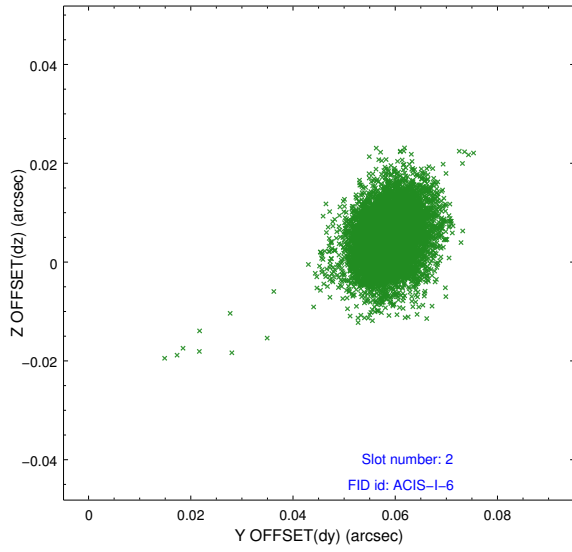
2.5.1 Slot 0



2.5.2 Slot 1



2.5.3 Slot 2



A Summary

A.1 Status

V&V Scientist	Jen Lauer
V&V Date (YYYY-MM-DD)	2012.05.16
V&V Edition	1
V&V Disposition and Status	OK
V&V Charge Time	28.0415589

A.2 Comments

Phase constraint met. Observation grouping constraint met.