

V&V Reference Report

L2 ASCDS Version : 8.4.4

Observation 9261 - L2 Version 3
Chandra X-Ray Center

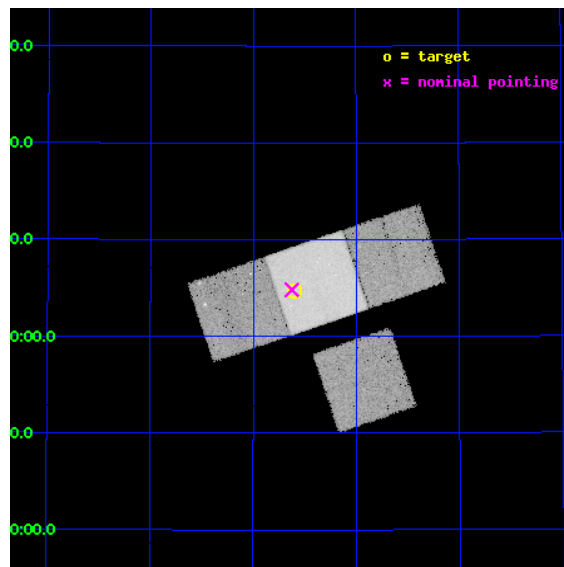
L2 Processing Date : May 10 2012

Contents

1	Front	2
2	OBI	3
2.1	OBI	3
2.1.1	Images	3
2.1.2	Bias	3
2.1.3	Parameters	4
2.1.4	Events	4
2.2	Compared Parameters	5
2.3	Aspect	6
2.4	Star Slots	9
2.4.1	Slot 3	9
2.4.2	Slot 4	10
2.4.3	Slot 5	11
2.4.4	Slot 6	12
2.4.5	Slot 7	13
2.5	FID Slots	14
2.5.1	Slot 0	14
2.5.2	Slot 1	15
2.5.3	Slot 2	16
A	Summary	17
A.1	Status	17
A.2	Comments	17

1 Front

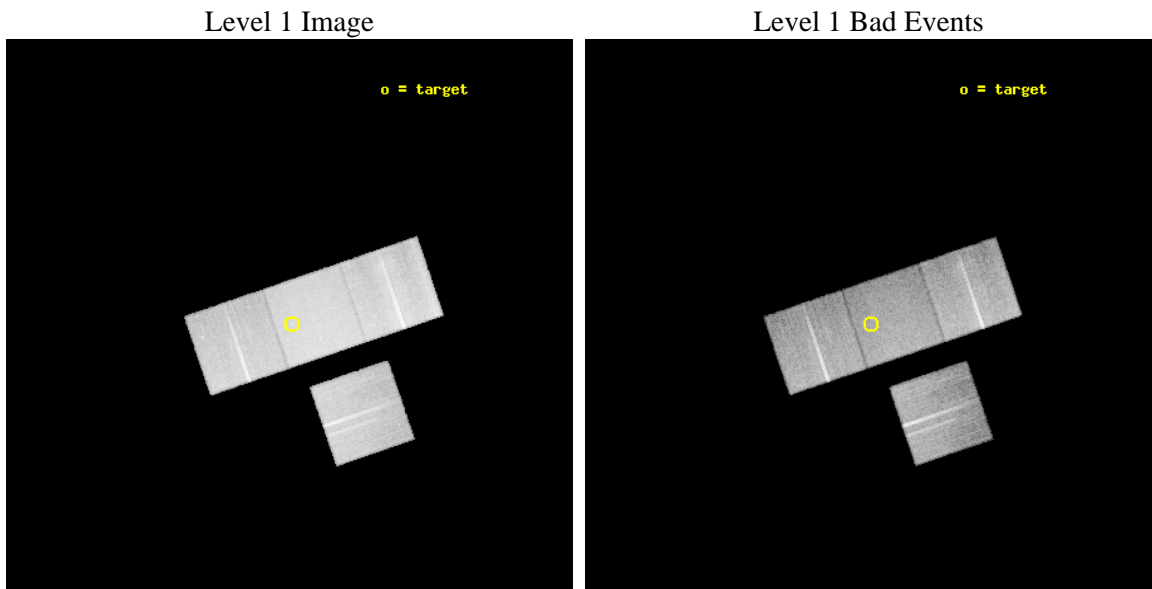
seq_num	701702	Sequence number
obs_id	9261	Observation id
title	Orientation effects in the X-ray and multi-wavelength properties of high-z, 3CRR quasars.	Proposal title
observer	Dr. Belinda Wilkes	Principal investigator
object	3CRR 470	Source name
dtcycle	0	
cycle	P	events from which exps? Prim/Second/Both
ra_targ	359.649583	Observer's specified target RA [deg]
dec_targ	44.079167	Observer's specified target Dec [deg]
ra_nom	359.65617048393	Nominal RA [deg]
dec_nom	44.080249859961	Nominal Dec [deg]
roll_nom	341.20703175958	Nominal Roll [deg]
revision	3	Processing version of data
ontime	20177.900155187	Sum of GTIs [s]
livetime	19914.261034905	Livetime [s]
ontime3	20177.900155187	Sum of GTIs [s]
ontime6	20177.900155187	Sum of GTIs [s]
ontime7	20177.900155187	Sum of GTIs [s]
ontime8	20177.900155187	Sum of GTIs [s]
l2events	176048	Number of level 2 events



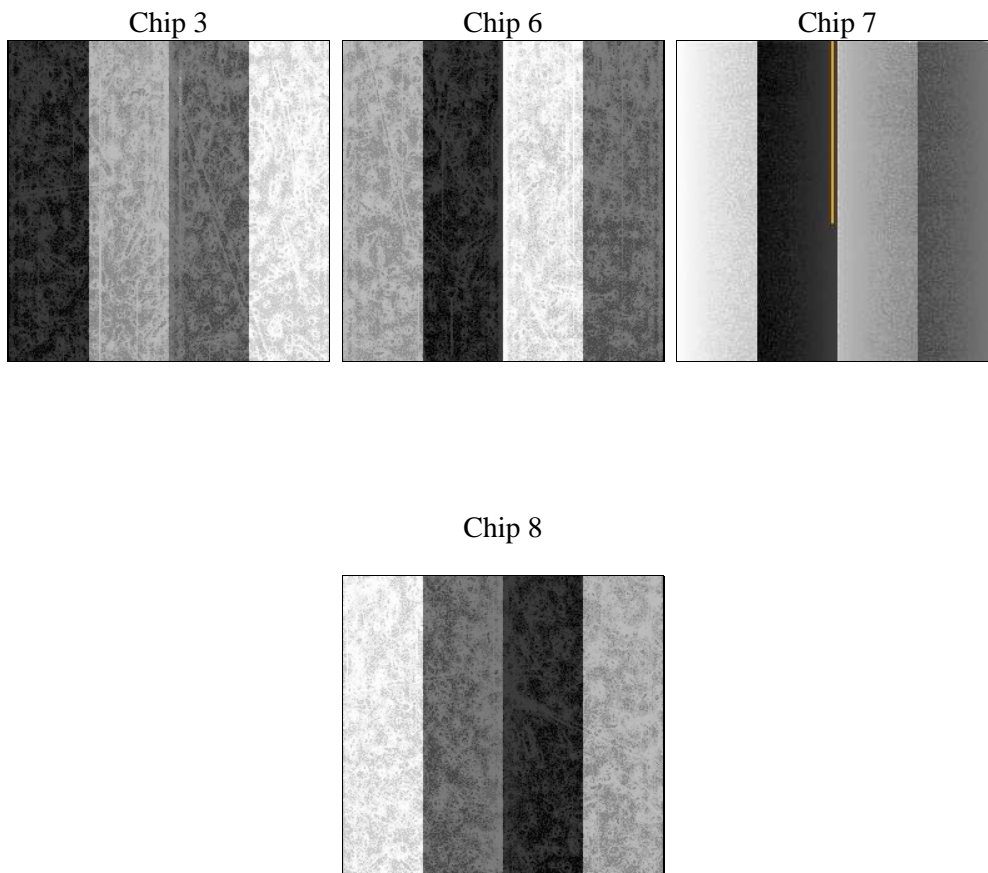
2 OBI

2.1 OBI

2.1.1 Images



2.1.2 Bias



2.1.3 Parameters

obi_num	0	Obi number	sched_exp_time	20000.000000	[s] Scheduled observation exposure time
ascdsver	8.4.4	Processing system revision	ontime	20177.900155187	Sum of GTIs [s]
caldsver	4.4.9	 	ontime3	20177.900155187	Sum of GTIs [s]
date	2012-05-10T22:30:37	Date and time of file creation	ontime6	20177.900155187	Sum of GTIs [s]
revision	3	Processing version of data	ontime7	20177.900155187	Sum of GTIs [s]
			ontime8	20177.900155187	Sum of GTIs [s]
			l1events	921469	Number of level 1 events

2.1.4 Events

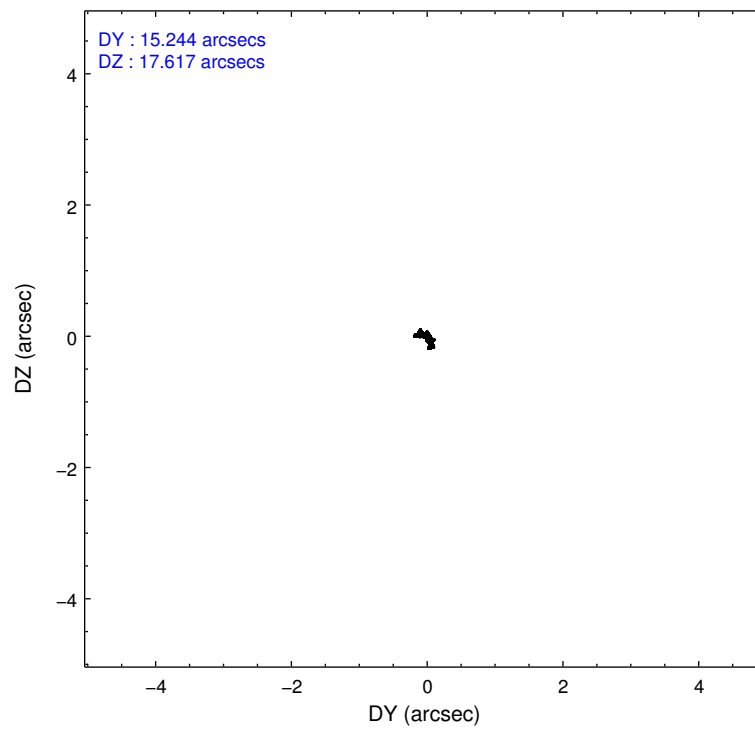
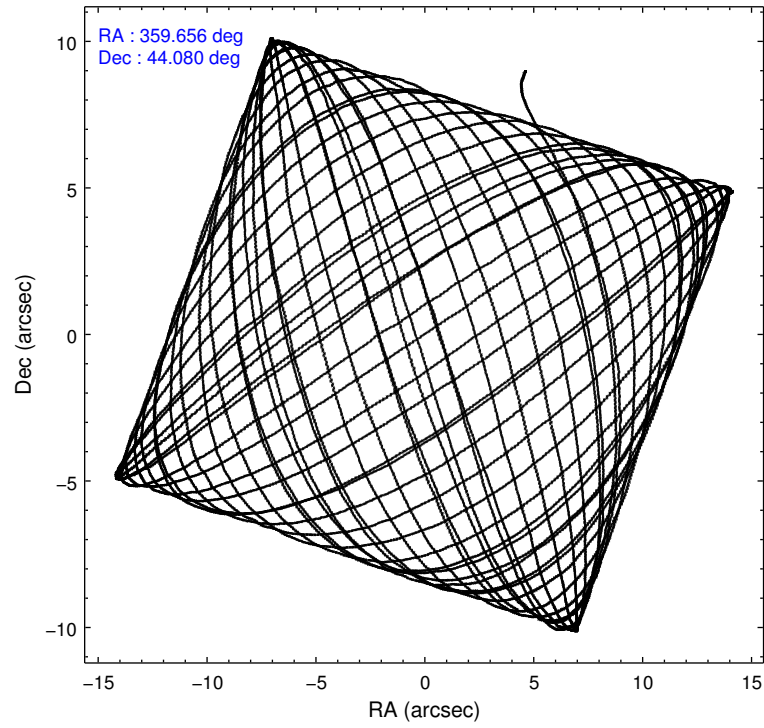
	ccd 3	ccd 6	ccd 7	ccd 8
level 1 events	192265	198417	273970	256817
rejected events	169064	173981	161173	199977
rejected %	87%	87%	58%	77%

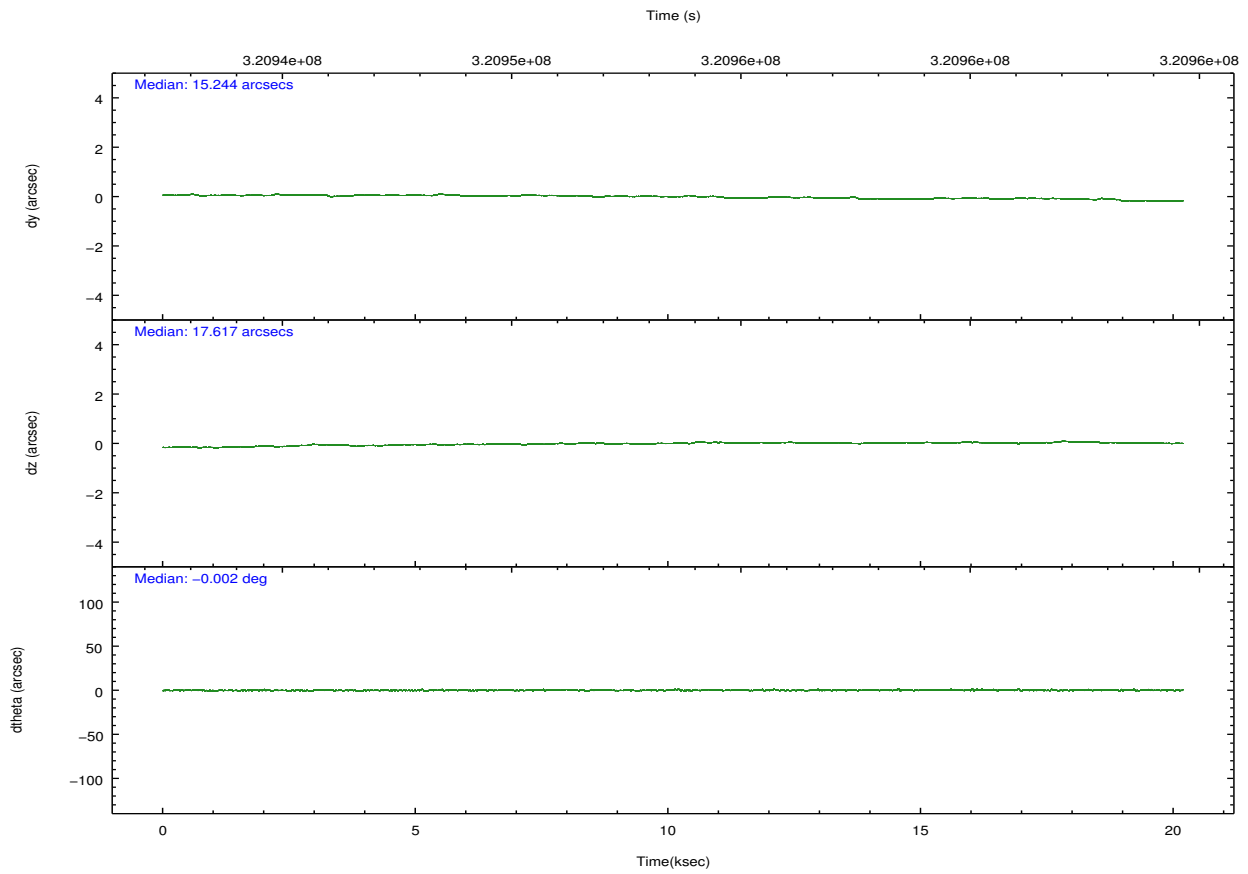
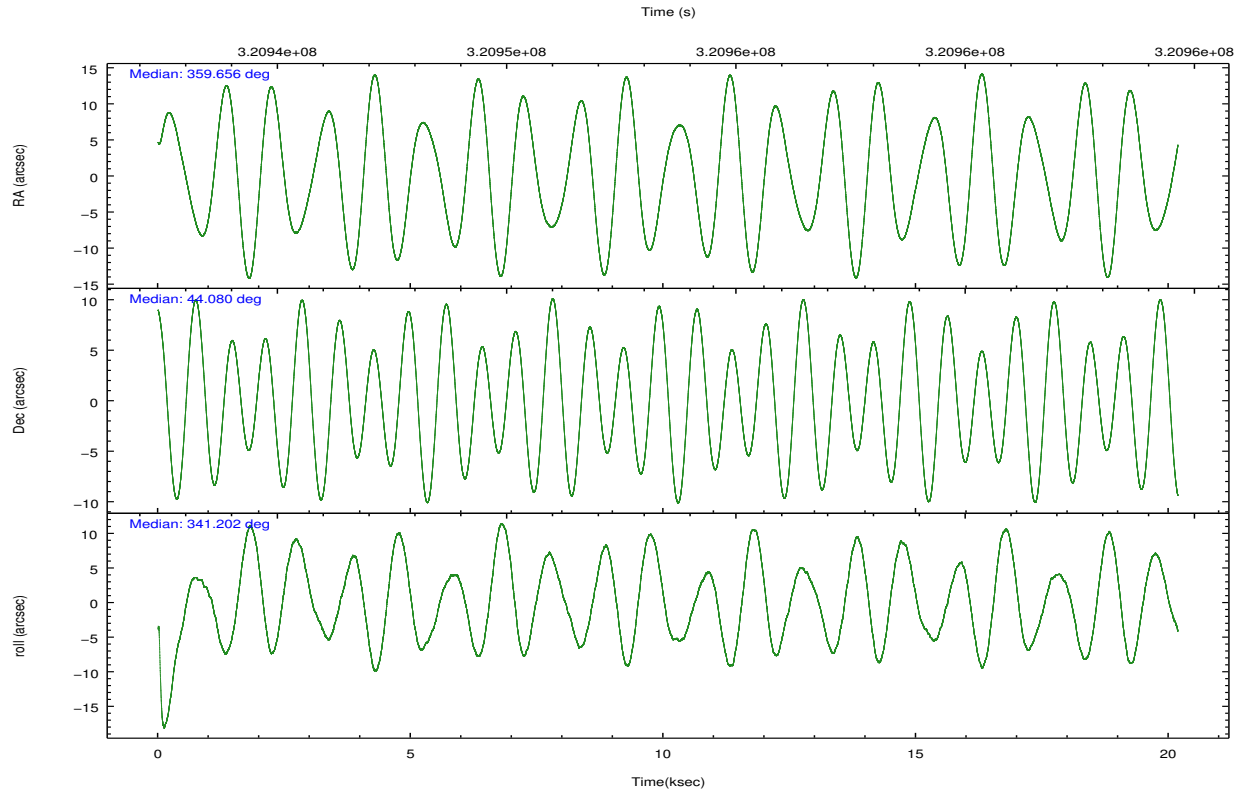
	ccd 3	ccd 6	ccd 7	ccd 8
grade 0 events	10217	10017	9824	18582
	5%	5%	3%	7%
grade 1 events	139	92	281	181
	0%	0%	0%	0%
grade 2 events	4733	5331	23553	12754
	2%	2%	8%	4%
grade 3 events	2269	2294	9568	6078
	1%	1%	3%	2%
grade 4 events	2183	2224	9587	5699
	1%	1%	3%	2%
grade 5 events	9266	9414	25798	12786
	4%	4%	9%	4%
grade 6 events	4170	4969	62240	14674
	2%	2%	22%	5%
grade 7 events	159288	164076	133119	186063
	82%	82%	48%	72%

2.2 Compared Parameters

Parameter	Planned	Actual	Parameter	Planned	Actual
Instrument	ACIS	ACIS	Obspar format version number	7	7
Detector	ACIS-3678	ACIS-3678	Obspar file type	PREDICTED	ACTUAL
Grating	NONE	NONE	Obspar update status	NONE	UPDATED
Data mode	FAINT	FAINT	CCD I0 on	N	N
Observation mode	POINTING	POINTING	CCD I1 on	N	N
[deg] Pointing RA	359.618938	359.6561704839307	CCD I2 on	N	N
[deg] Pointing Dec	44.074560	44.0802498599608	CCD I3 on	O1	Y
[deg] Pointing Roll	341.076306	341.2070317595782	CCD S0 on	N	N
[mm] SIM focus pos	-0.684267	-0.6828225247311905	CCD S1 on	N	N
[mm] SIM defocus	0	0.001444936568705701	CCD S2 on	O3	Y
[mm] SIM translation stage pos	-190.132523	-190.1425803651734	CCD S3 on	Y	Y
[mm] SIM translation stage offset	0	0.01005778216563158	CCD S4 on	O2	Y
[s] Observation start time (MET)	320943618.184000	320942513.09028	CCD S5 on	N	N
Observation start date	2008-03-03T14:59:13	2008-03-03T14:41:53	Number of optional ACIS chips dropped	0	0
[s] Observation end time (MET)	320963618.184000	320964657.70385	On-chip summing requested	N	N
Observation end date	2008-03-03T20:32:33	2008-03-03T20:50:57	Subarray requested	NONE	NONE
Read mode	TIMED	TIMED	Alternating exposures requested	N	N
			[s] Primary exposure time	0.000000	3.1

2.3 Aspect



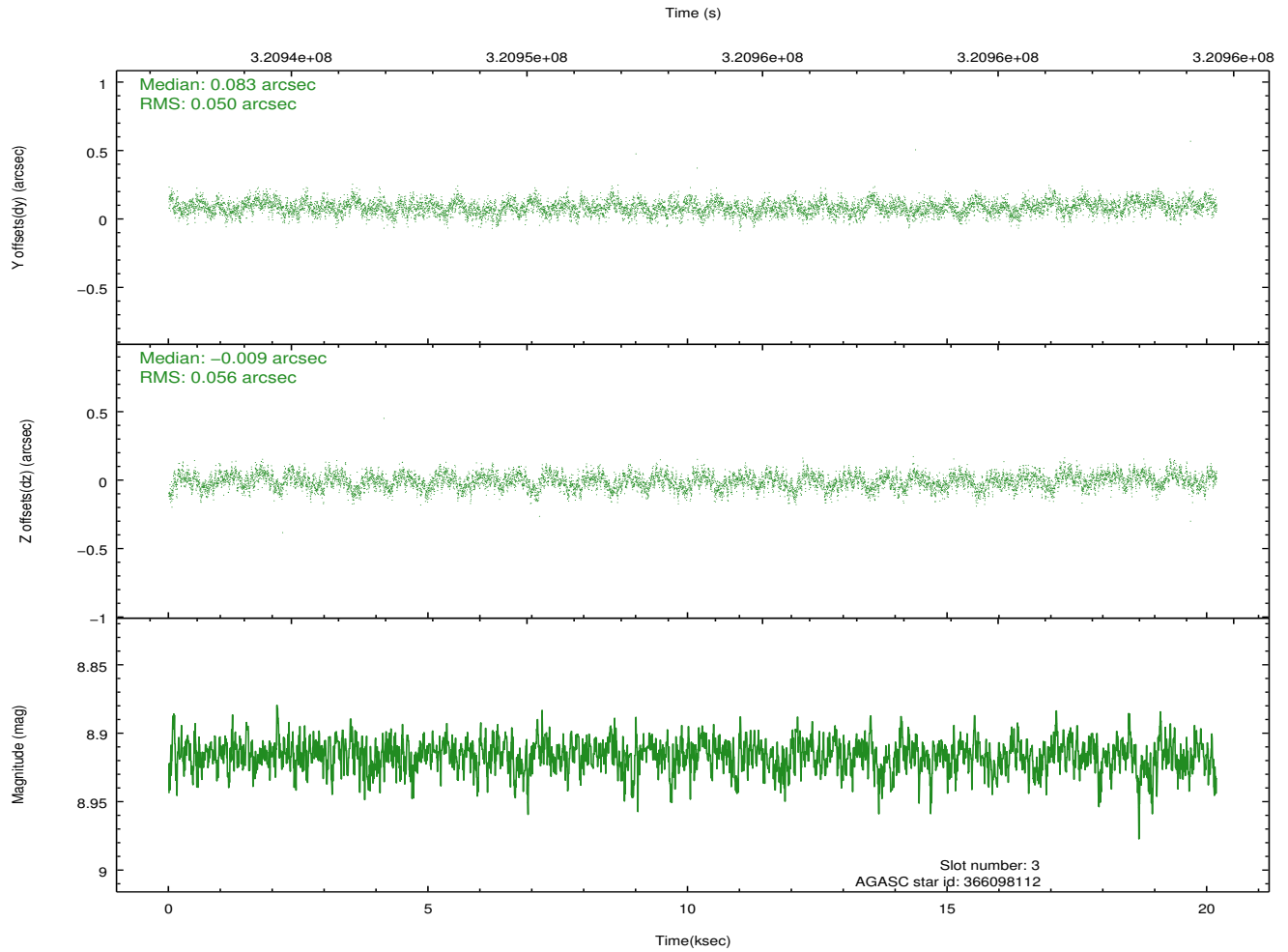
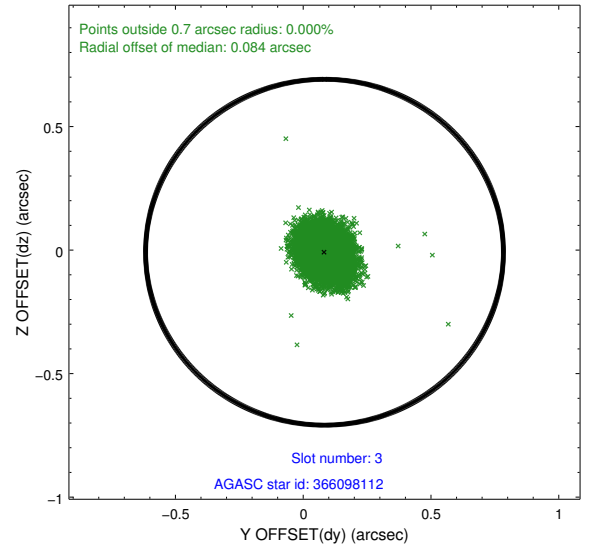
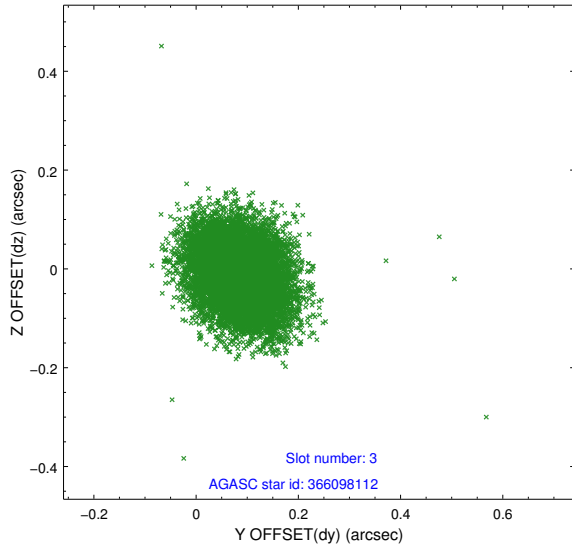


Slot Statistics

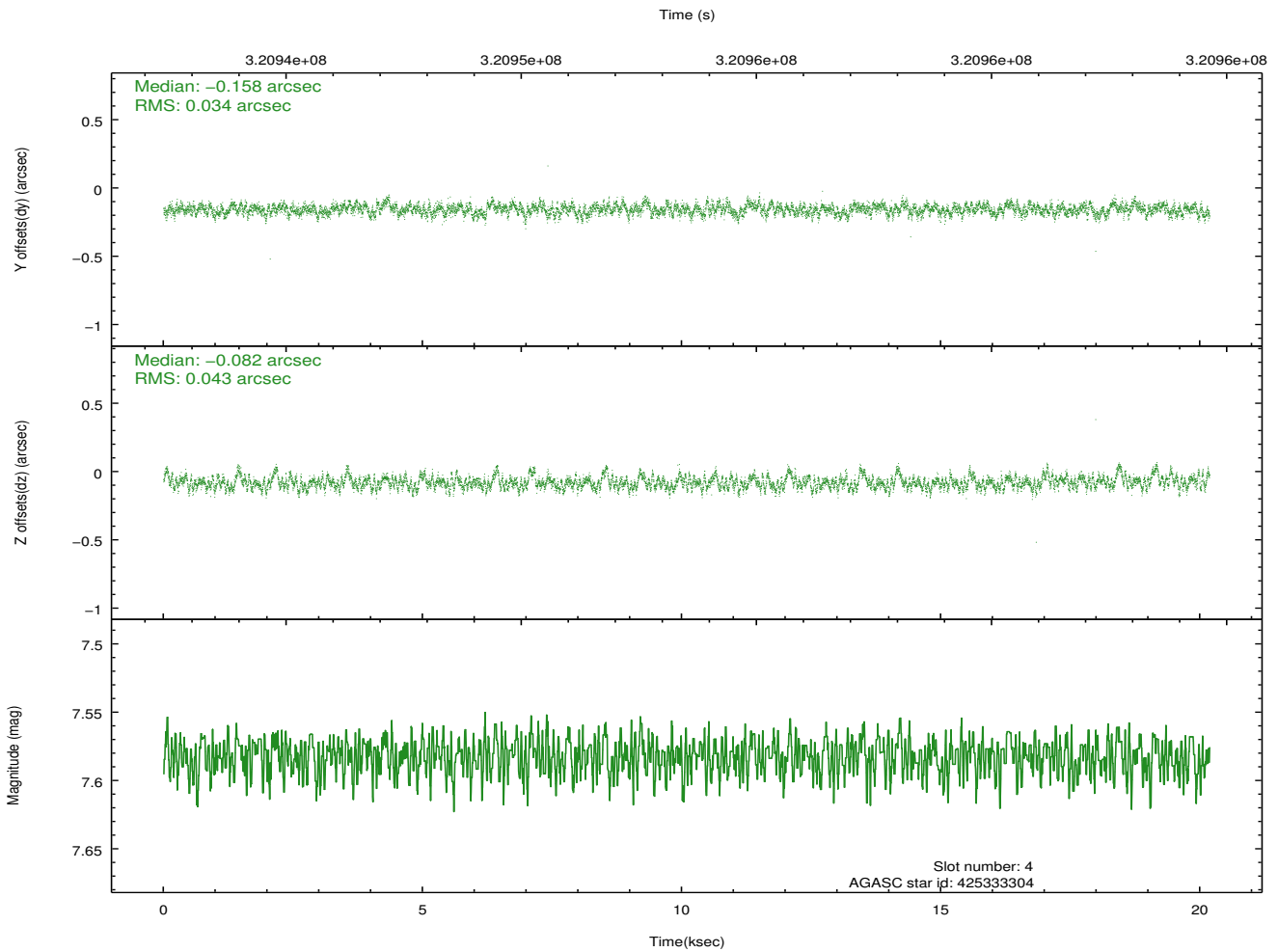
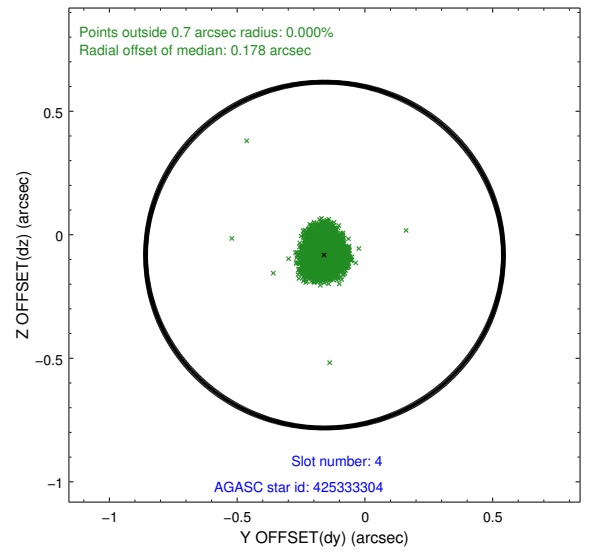
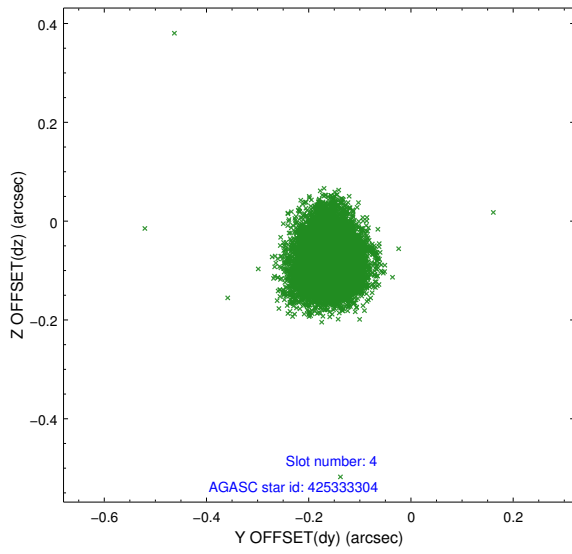
slot	status	id	mag	n_pts	med_dy	med_dz	dr1	dr2	ra	dec	mean_y	mean_z
0	FID	ACIS-S-2	7.09	4923	-0.067	-0.057	0.008	0.019	0.000000	0.000000	-768.32	-1739.03
1	FID	ACIS-S-4	7.18	4921	0.161	0.048	0.008	0.026	0.000000	0.000000	2145.16	169.28
2	FID	ACIS-S-5	7.22	4923	-0.126	0.018	0.009	0.025	0.000000	0.000000	-1820.93	163.26
3	GUIDE	366098112	8.92	9840	0.083	-0.009	0.079	0.128	0.553395	44.428263	1855.45	1996.77
4	GUIDE	425333304	7.58	9846	-0.158	-0.082	0.058	0.095	359.756427	44.563990	-237.90	1781.43
5	GUIDE	425336112	9.23	9836	-0.043	0.073	0.097	0.155	358.744847	44.019084	-2079.60	-911.43
6	GUIDE	425338016	8.78	9840	0.037	-0.000	0.080	0.125	359.810106	43.863509	715.54	-557.62
7	GUIDE	425344576	8.53	9843	0.082	0.015	0.066	0.107	359.455344	43.888134	-183.40	-772.12

2.4 Star Slots

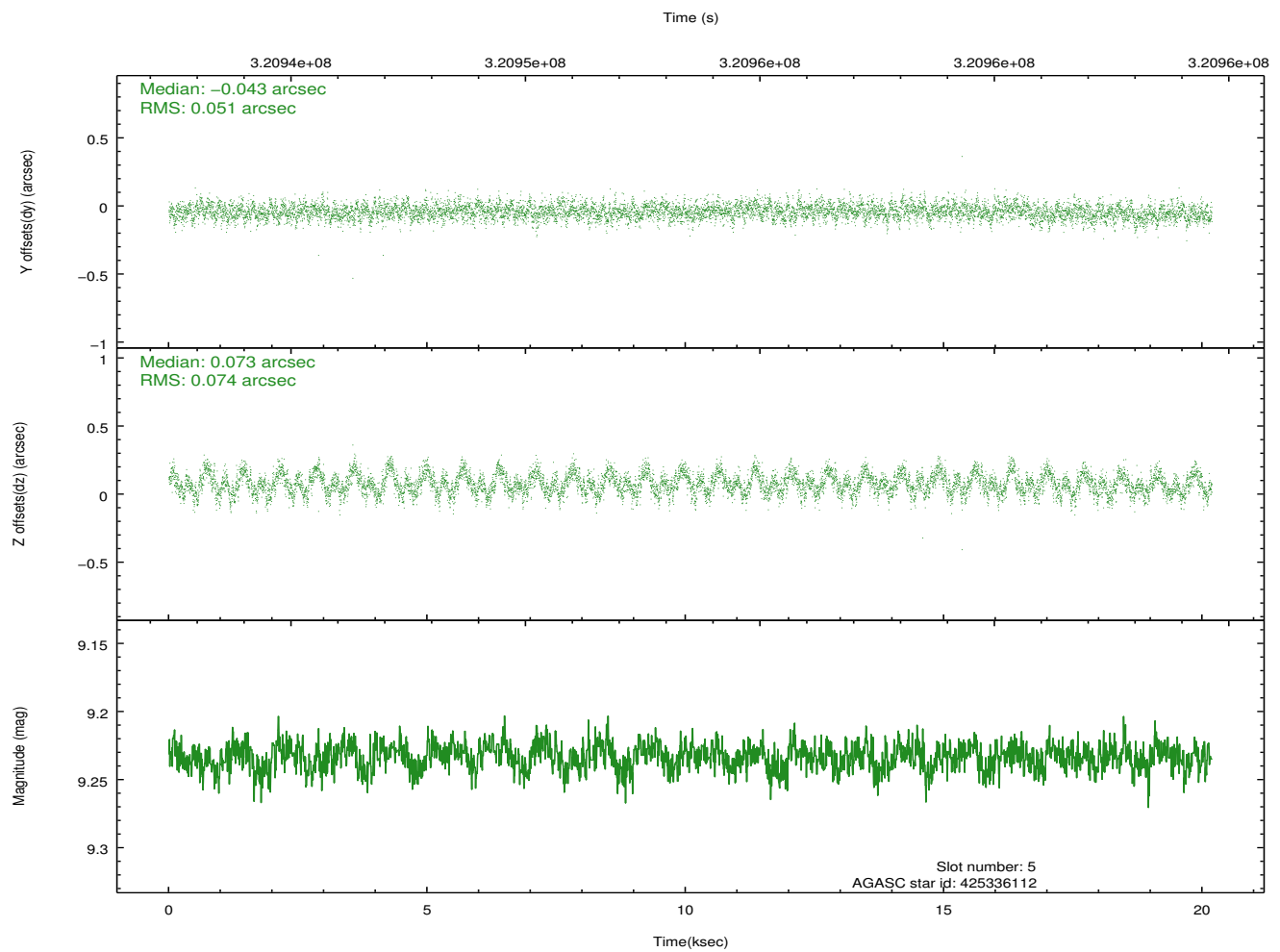
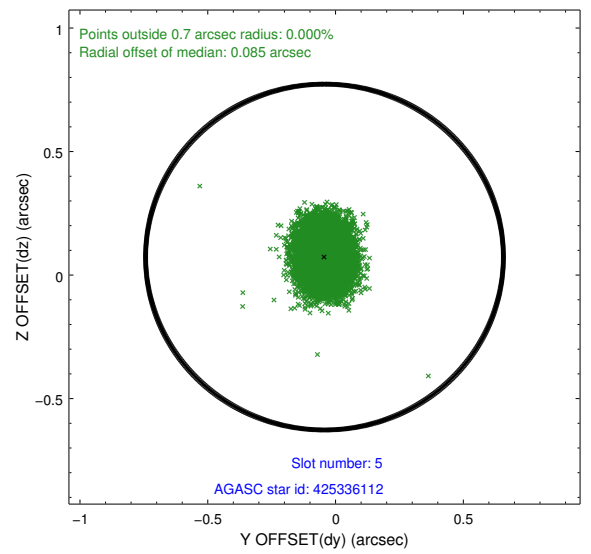
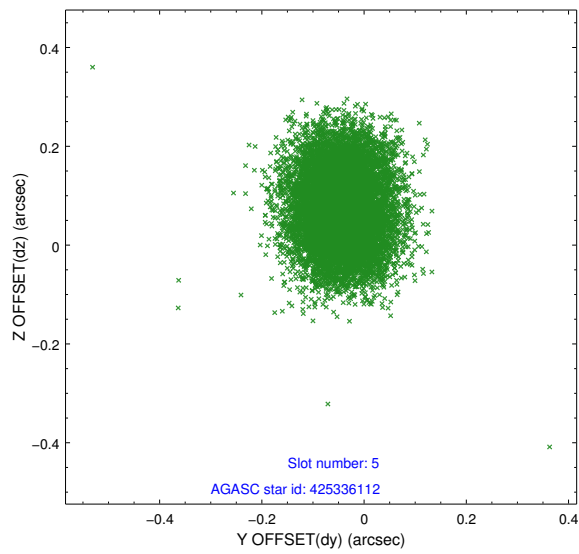
2.4.1 Slot 3



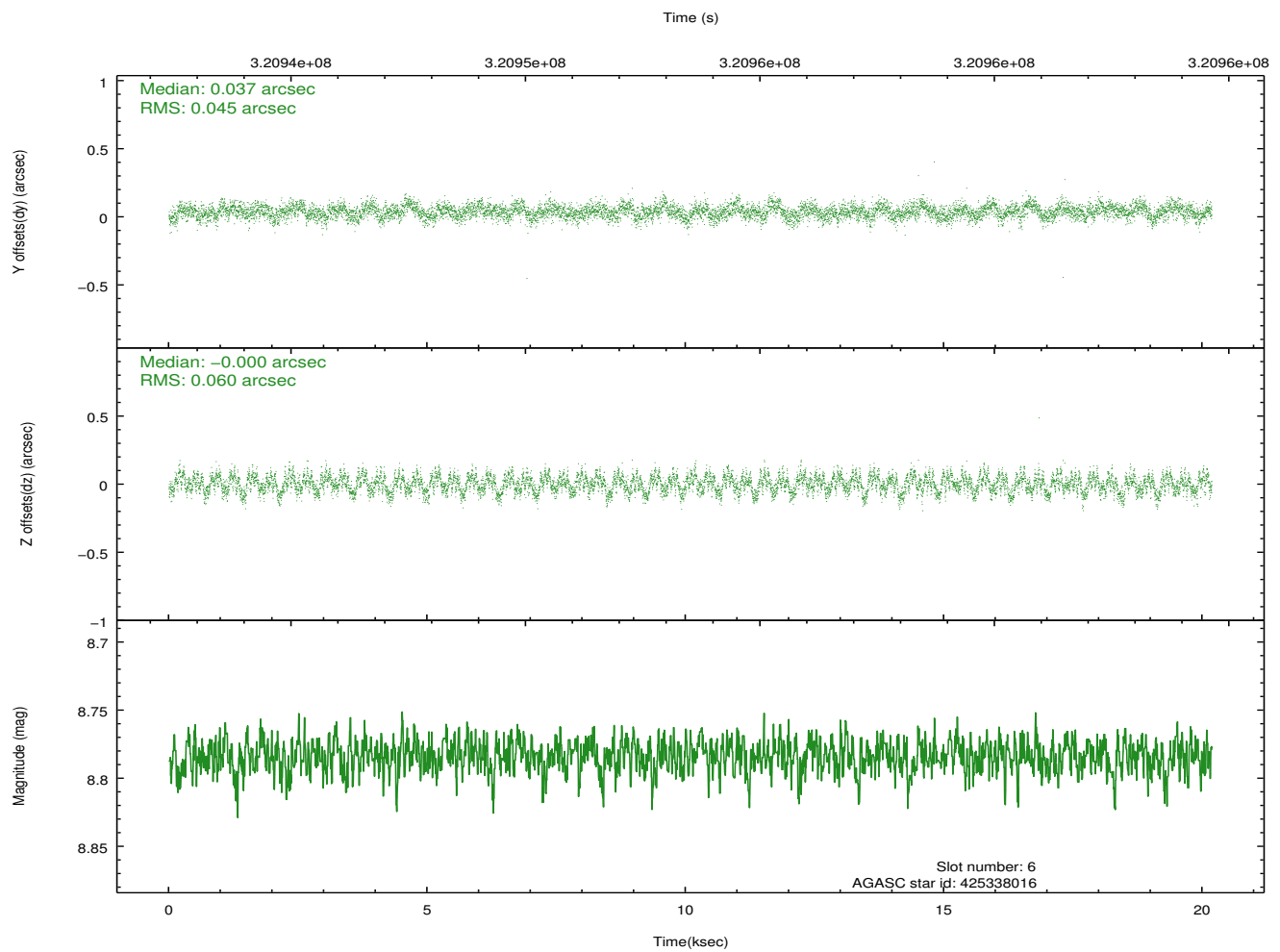
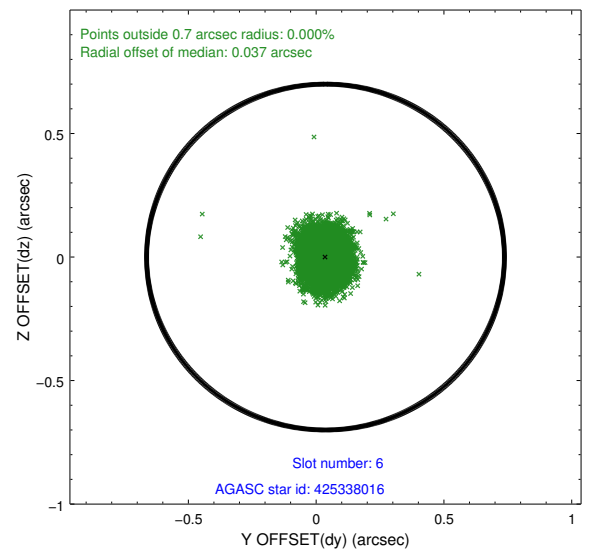
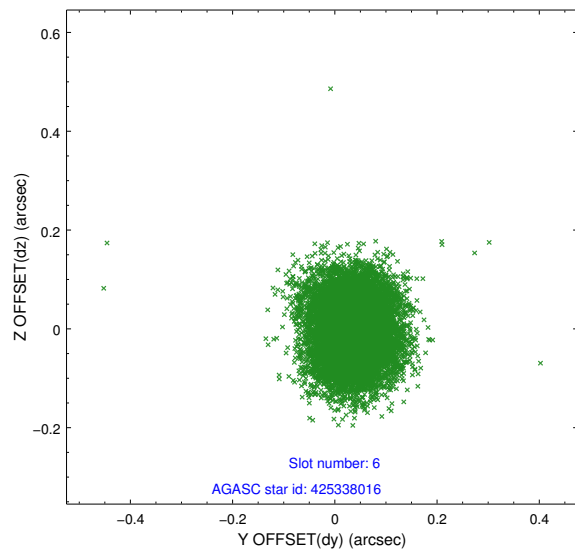
2.4.2 Slot 4



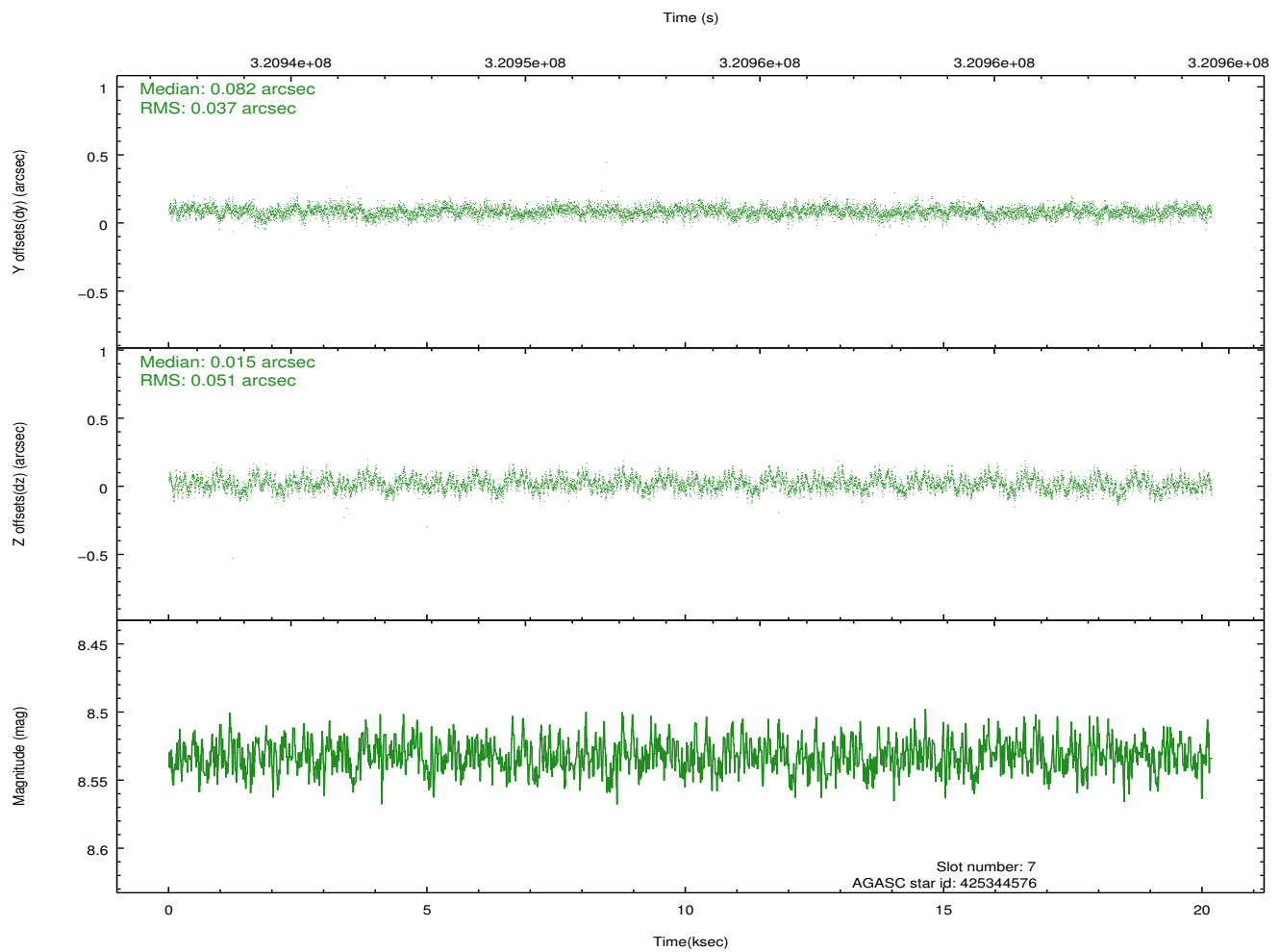
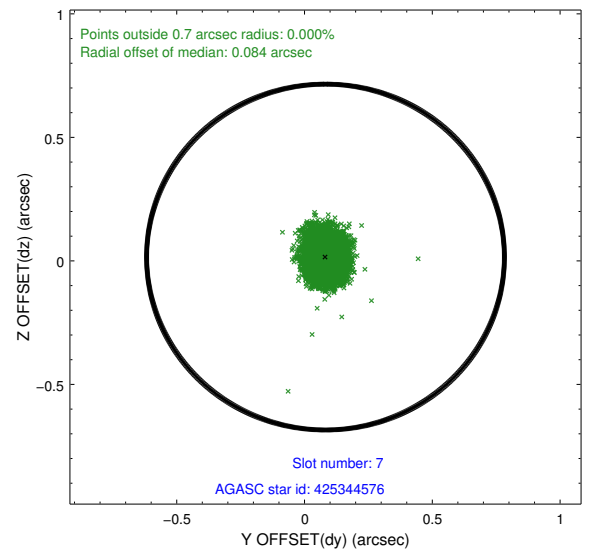
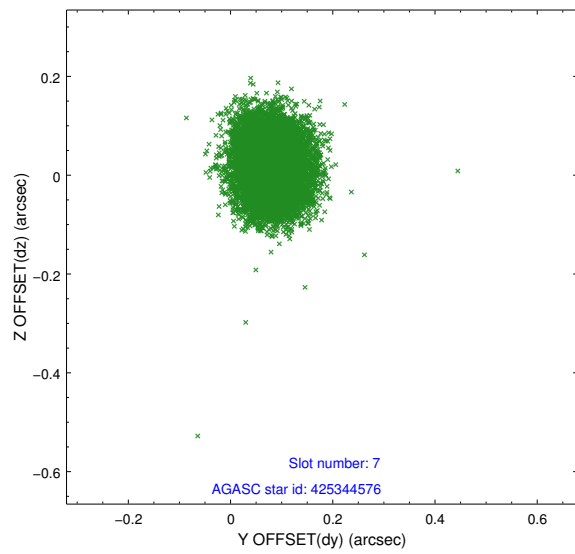
2.4.3 Slot 5



2.4.4 Slot 6

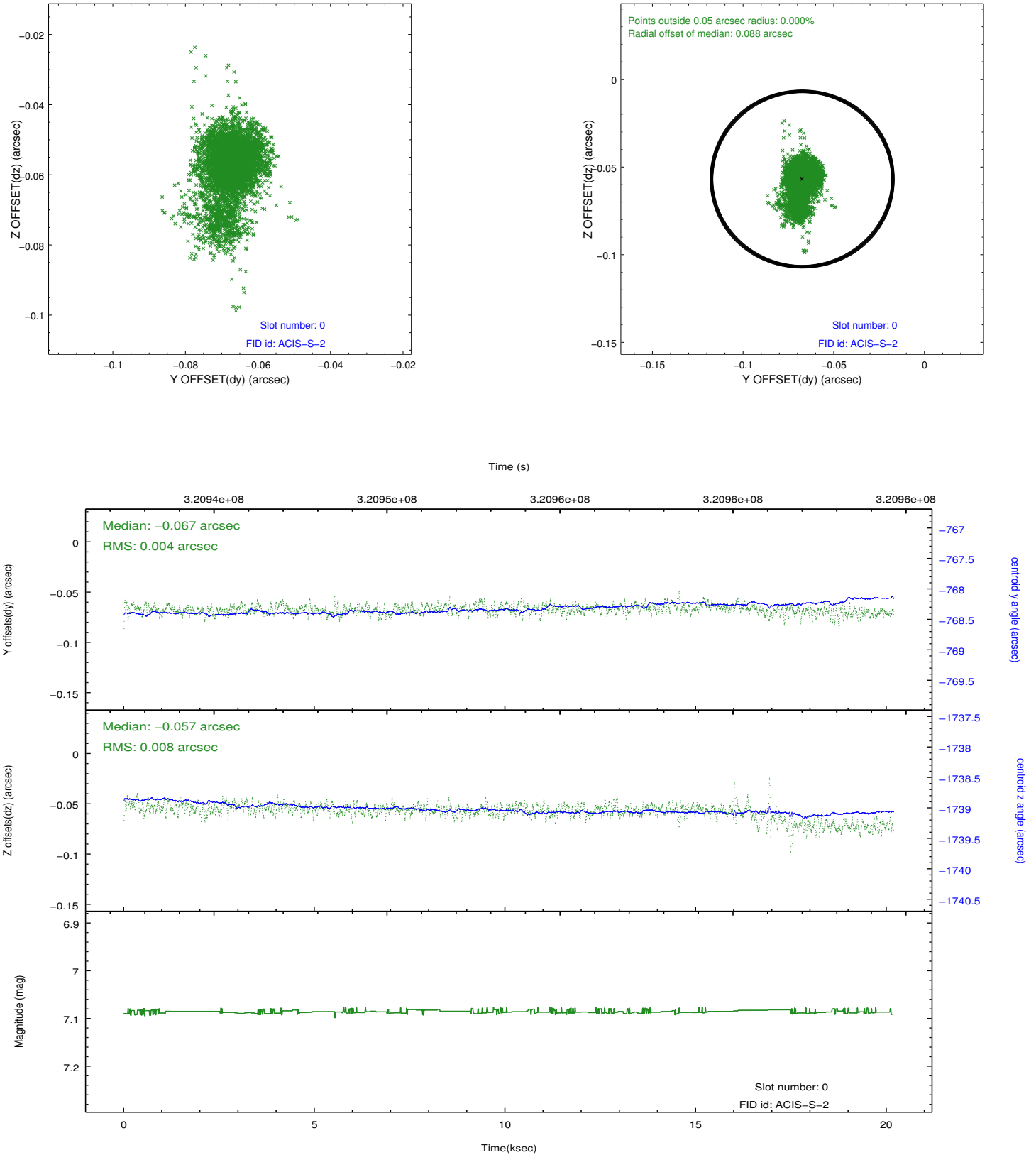


2.4.5 Slot 7

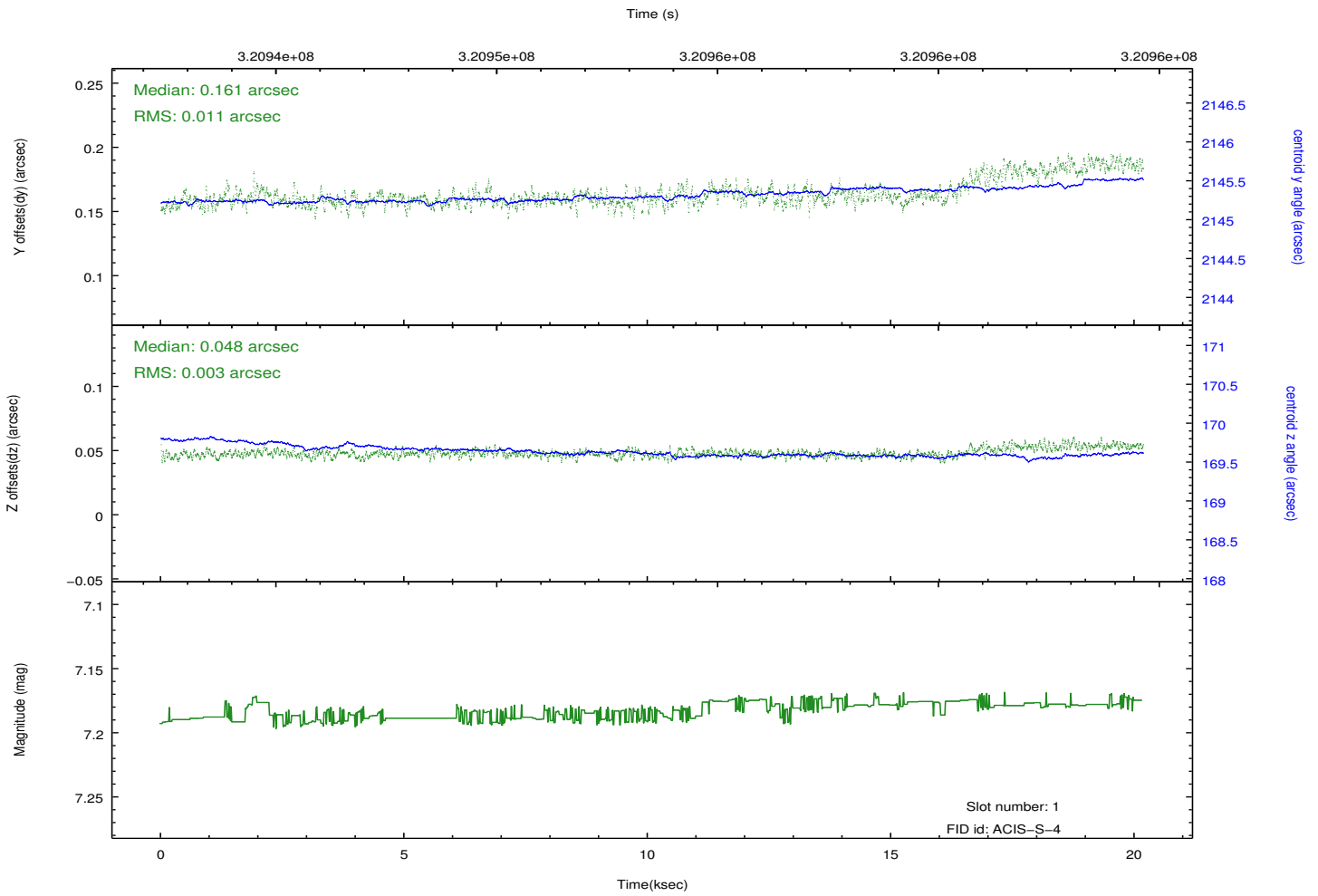
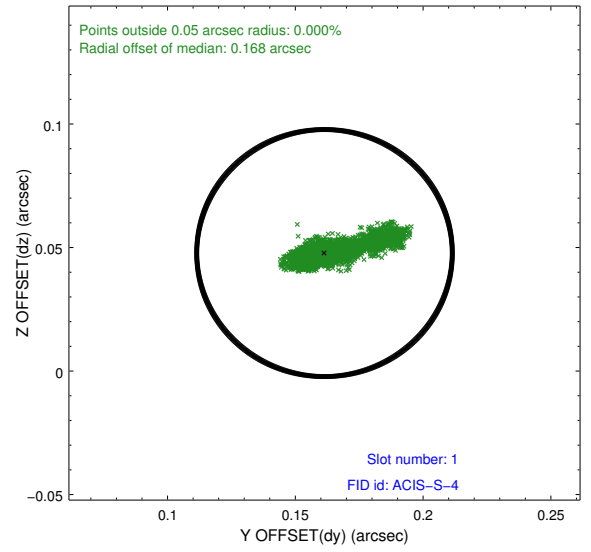
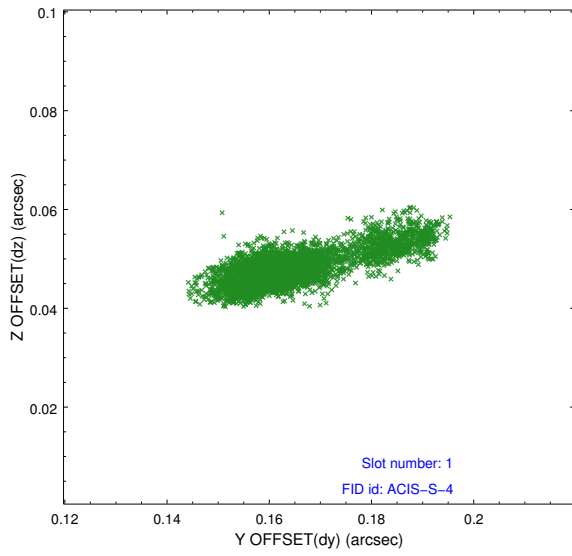


2.5 FID Slots

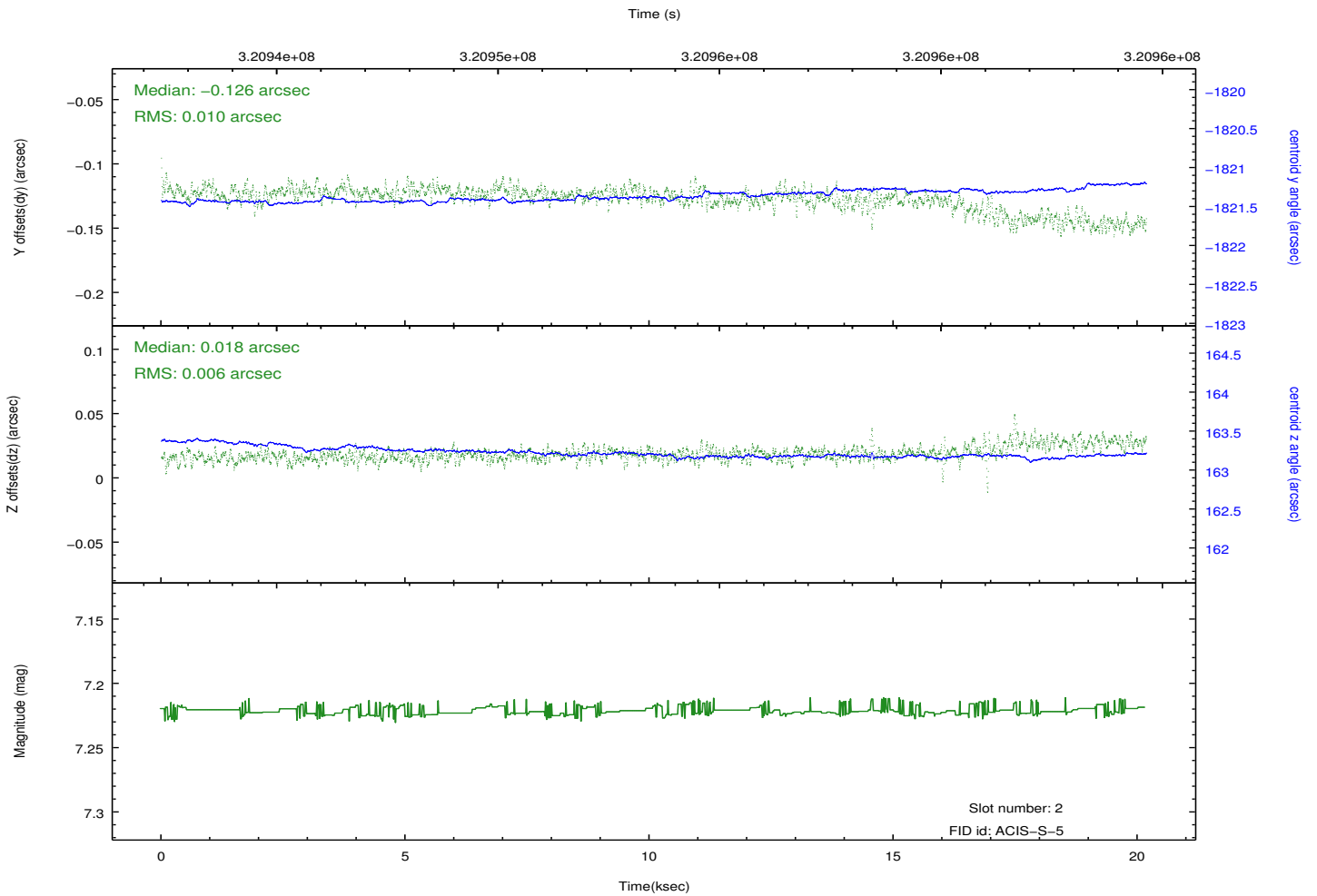
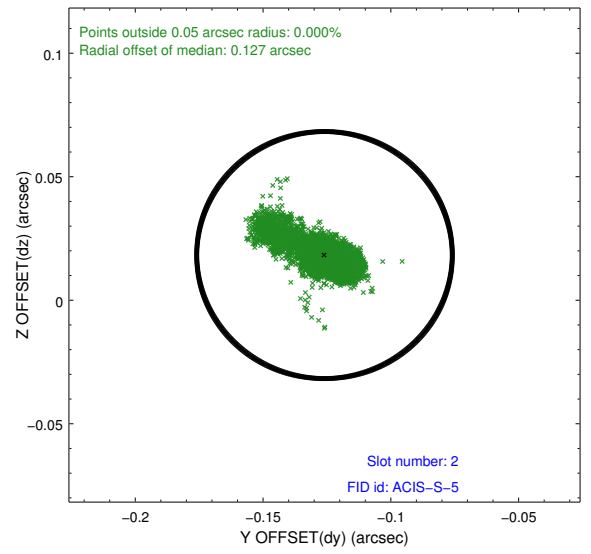
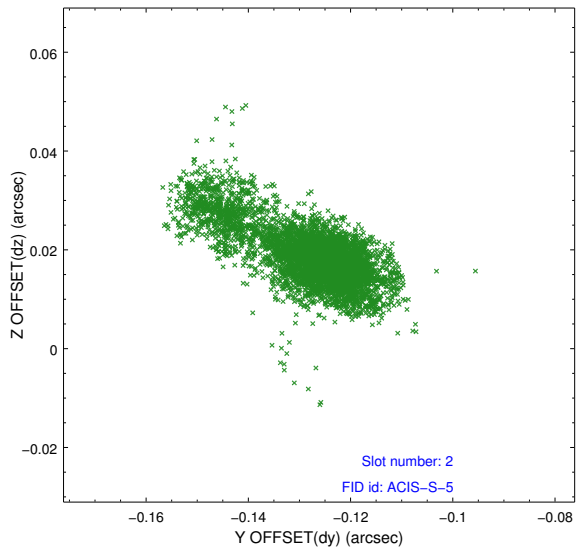
2.5.1 Slot 0



2.5.2 Slot 1



2.5.3 Slot 2



A Summary

A.1 Status

V&V Scientist	Jen Lauer
V&V Date (YYYY-MM-DD)	2012.05.14
V&V Edition	1
V&V Disposition and Status	OK
V&V Charge Time	20.1779001

A.2 Comments

The bias map for CCD_ID = 7 suffers from anomalously high bias values in three rows of the CCD. These rows do not intersect the source, but are very nearby and might affect a background determination. The bias map for CCD_ID=7 has been recreated for this processing to remove this anomaly by using scaled data from a comparable bias map for another observation to replace pixels affected by the anomaly. Therefore there should be no impact on the science from this bias issue. The affected rows are bounded by the sky coords:

(359.69491,44.08240), (359.51076,44.12722), (359.51064,44.12696), (359.69479,44.08214)