

V&V Reference Report

L2 ASCDS Version : 8.4.5

Observation 931 - L2 Version 4
Chandra X-Ray Center

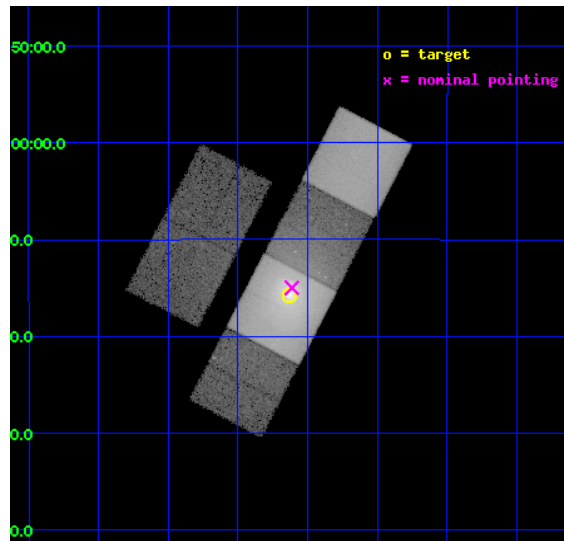
L2 Processing Date : Aug 30 2012

Contents

1	Front	2
2	OBI	3
2.1	OBI	3
2.1.1	Images	3
2.1.2	Bias	3
2.1.3	Parameters	4
2.1.4	Events	4
2.2	Compared Parameters	5
2.3	Aspect	6
2.4	Star Slots	9
2.4.1	Slot 3	9
2.4.2	Slot 4	10
2.4.3	Slot 5	11
2.4.4	Slot 6	12
2.4.5	Slot 7	13
2.5	FID Slots	14
2.5.1	Slot 0	14
2.5.2	Slot 1	15
2.5.3	Slot 2	16
A	Summary	17
A.1	Status	17
A.2	Comments	17

1 Front

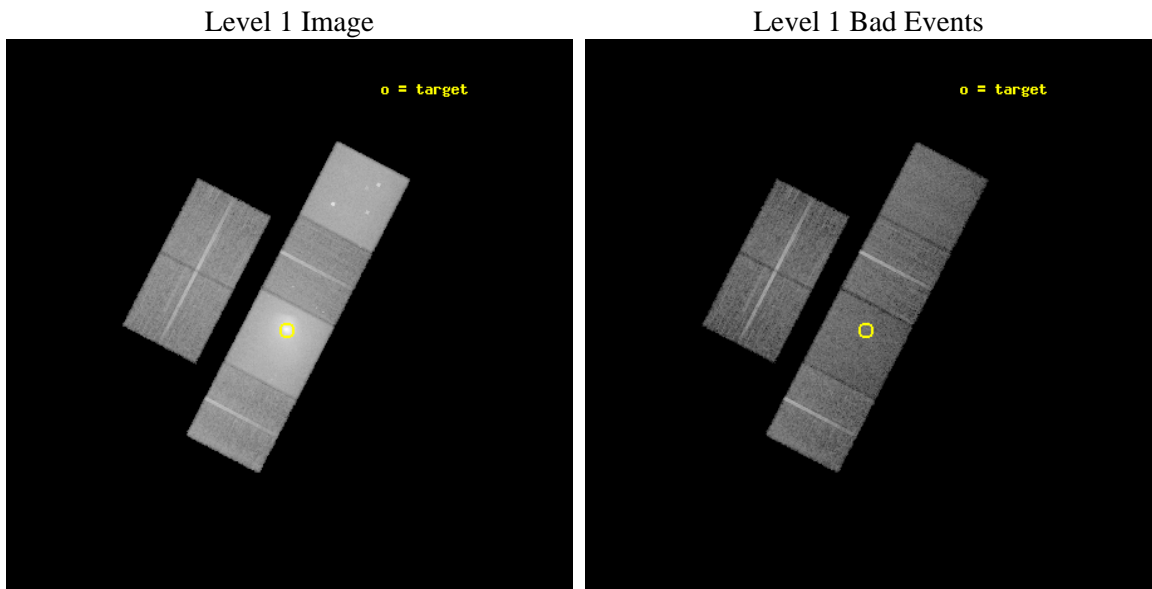
seq_num	800107	Sequence number
obs_id	931	Observation id
title	SPATIAL DISTRIBUTION OF ABUNDANCE AND TEMPERATURE IN ABELL 496	Pro
observer	Dr. Raymond White	Principal investigator
object	ABELL 496	Source name
dtcycle	0	
cycle	P	events from which exps? Prim/Second/Both
ra_targ	68.4075	Observer's specified target RA [deg]
dec_targ	-13.26194	Observer's specified target Dec [deg]
ra_nom	68.403193623509	Nominal RA [deg]
dec_nom	-13.249916822458	Nominal Dec [deg]
roll_nom	117.45095177731	Nominal Roll [deg]
revision	4	Processing version of data
ontime	19161.600017831	Sum of GTIs [s]
livetime	18918.964300675	Livetime [s]
ontime2	19161.600017831	Sum of GTIs [s]
ontime3	19161.600017831	Sum of GTIs [s]
ontime5	19161.600017831	Sum of GTIs [s]
ontime6	19161.600017831	Sum of GTIs [s]
ontime7	19161.600017831	Sum of GTIs [s]
ontime8	19161.600017831	Sum of GTIs [s]
l2events	717761	Number of level 2 events



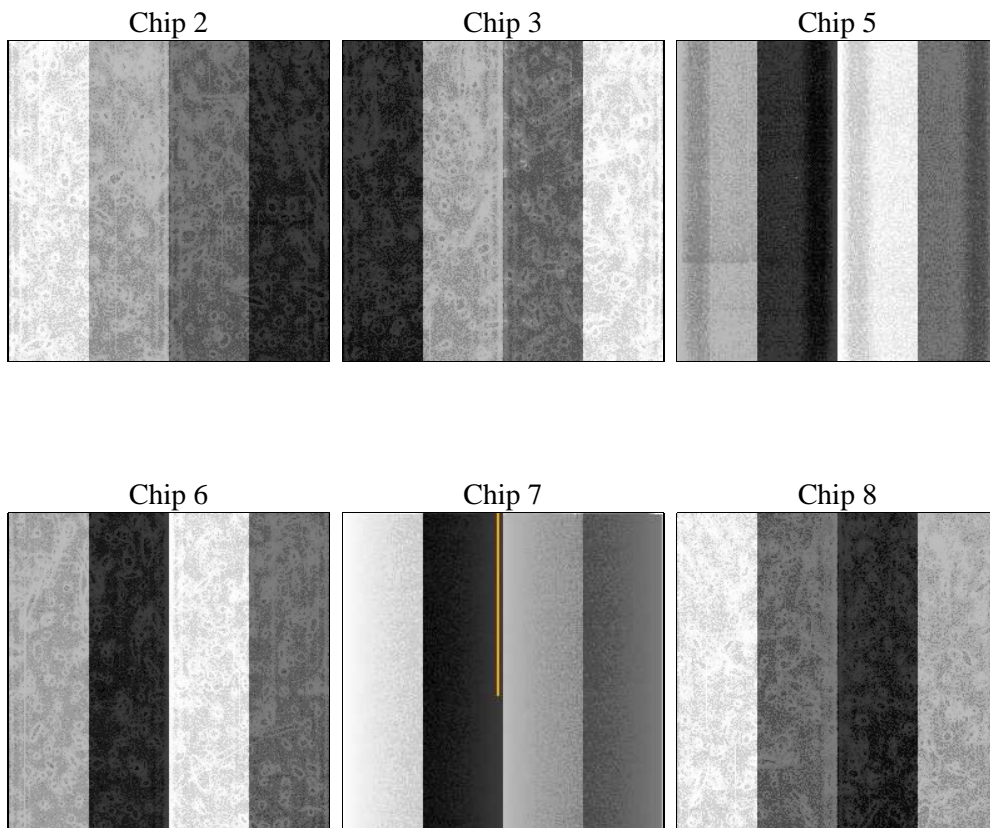
2 OBI

2.1 OBI

2.1.1 Images



2.1.2 Bias



2.1.3 Parameters

obi_num	0	Obi number	sched_exp_time	19000.000000	[s] Scheduled observation exposure time
ascdsver	8.4.5	Processing system revision	ontime	19161.600017831	Sum of GTIs [s]
caldsver	4.5.1.1	 	ontime2	19161.600017831	Sum of GTIs [s]
date	2012-08-30T21:34:29	Date and time of file creation	ontime3	19161.600017831	Sum of GTIs [s]
revision	4	Processing version of data	ontime5	19161.600017831	Sum of GTIs [s]
			ontime6	19161.600017831	Sum of GTIs [s]
			ontime7	19161.600017831	Sum of GTIs [s]
			ontime8	19161.600017831	Sum of GTIs [s]
			l1events	1327721	Number of level 1 events

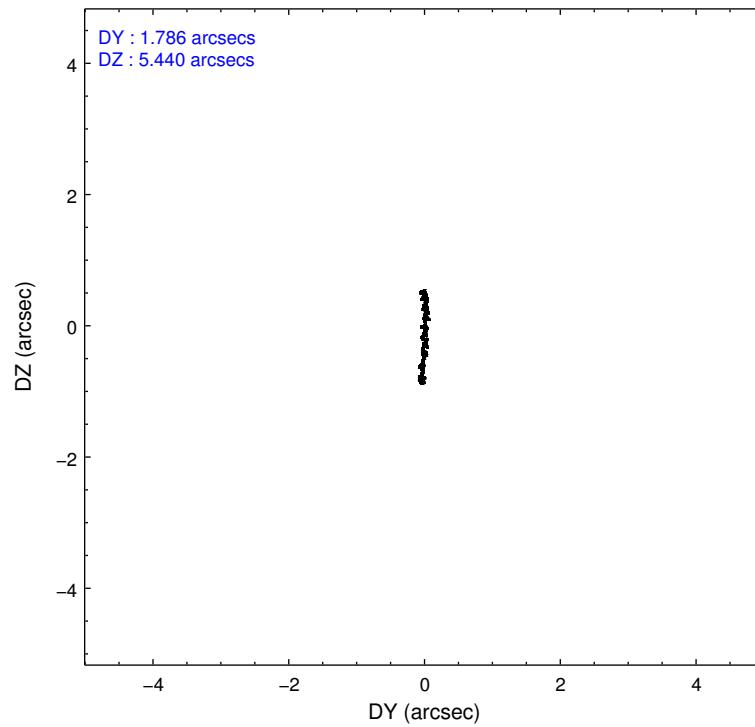
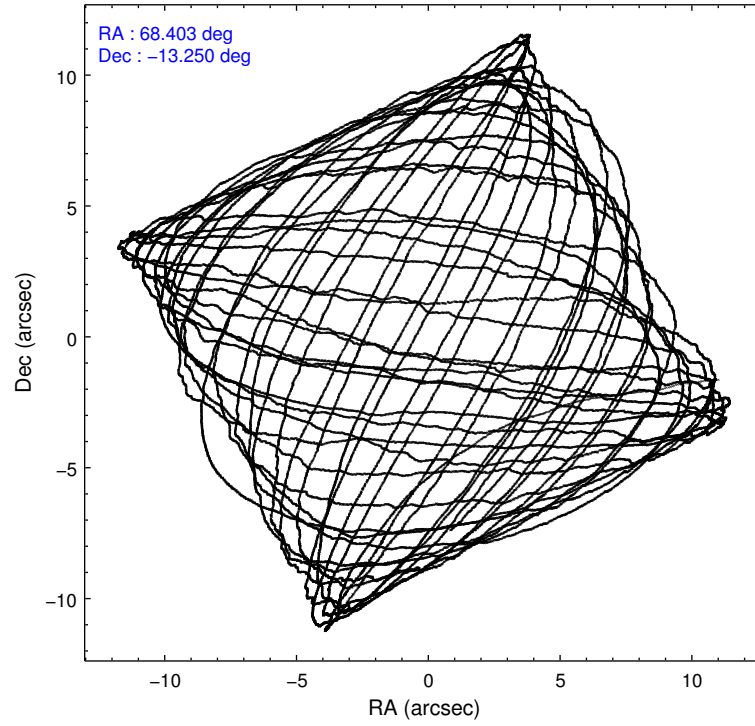
2.1.4 Events

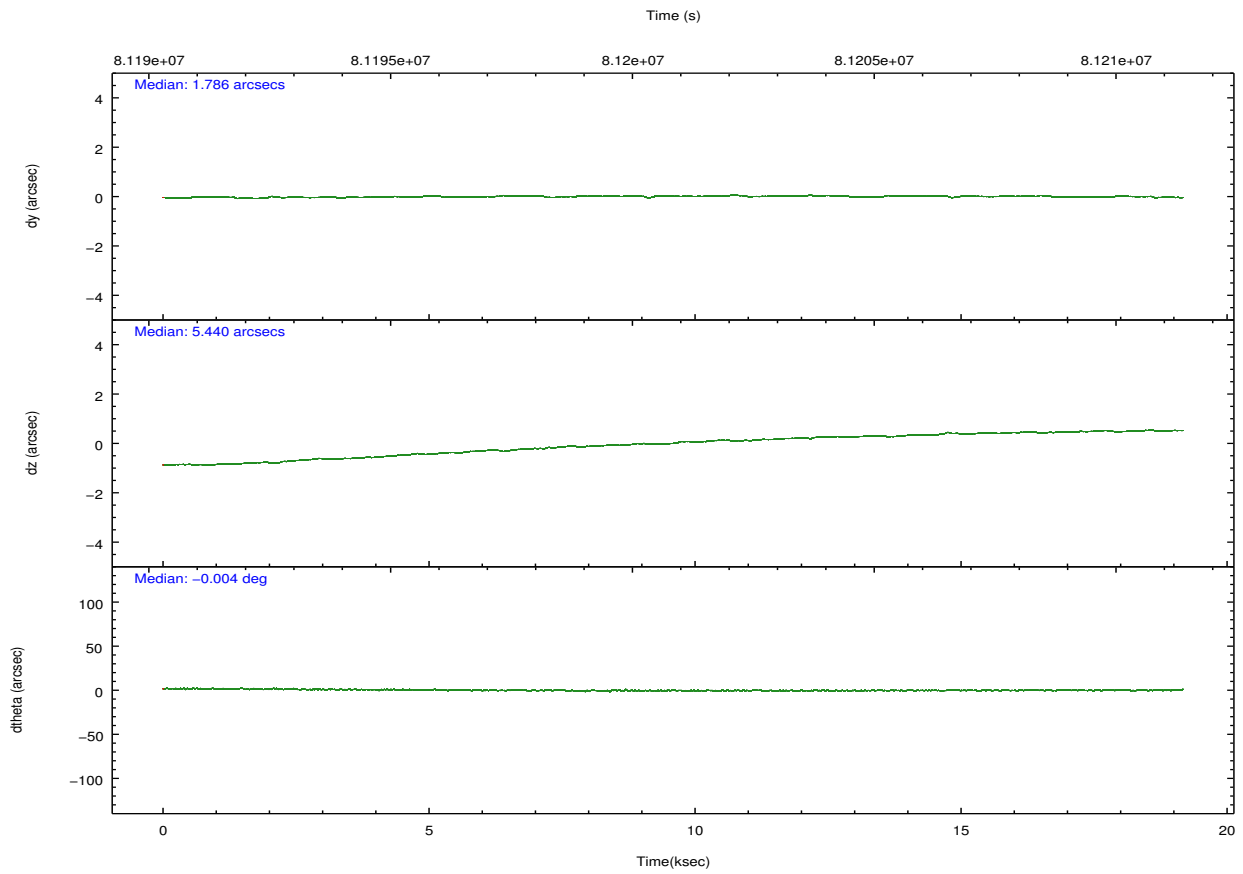
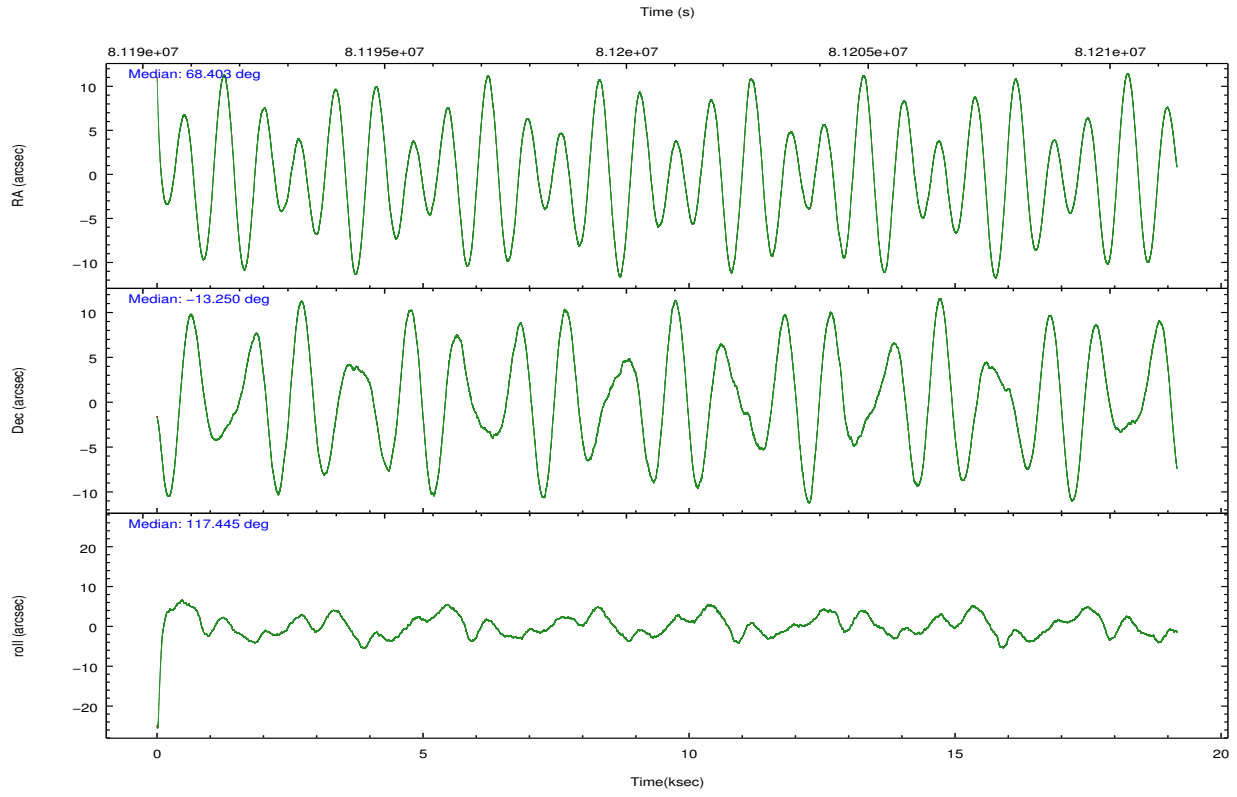
	ccd 2	ccd 3	ccd 5	ccd 6	ccd 7	ccd 8		ccd 2	ccd 3	ccd 5	ccd 6	ccd 7	ccd 8
level 1 events	117294	112425	301227	146432	501960	148383	grade 0 events	9970	10512	44136	35690	95008	18438
rejected events	99439	94152	88691	97615	81532	109557		8%	9%	14%	24%	18%	12%
rejected %	84%	83%	29%	66%	16%	73%	grade 1 events	63	57	253	131	219	101
								0%	0%	0%	0%	0%	0%
							grade 2 events	3104	2944	57546	5798	96279	6825
								2%	2%	19%	3%	19%	4%
							grade 3 events	1313	1351	13472	2154	43385	3336
								1%	1%	4%	1%	8%	2%
							grade 4 events	1345	1297	13262	2168	42791	3038
								1%	1%	4%	1%	8%	2%
							grade 5 events	3614	3968	12736	4399	14928	5399
								3%	3%	4%	3%	2%	3%
							grade 6 events	2180	2223	84372	3129	143809	7259
								1%	1%	28%	2%	28%	4%
							grade 7 events	95705	90073	75450	92963	65541	103987
								81%	80%	25%	63%	13%	70%

2.2 Compared Parameters

Parameter	Planned	Actual	Parameter	Planned	Actual
Instrument	ACIS	ACIS	Obspar format version number	7	7
Detector	ACIS-235678	ACIS-235678	Obspar file type	PREDICTED	ACTUAL
Grating	NONE	NONE	Obspar update status	NONE	UPDATED
Data mode	FAINT	FAINT	Number of optional ACIS chips dropped	0	0
Observation mode	POINTING	POINTING	On-chip summing requested	N	N
[deg] Pointing RA	68.426989	68.40319362350944	Subarray requested	NONE	NONE
[deg] Pointing Dec	-13.264530	-13.24991682245778	Alternating exposures requested	N	N
[deg] Pointing Roll	117.299807	117.4509517773124	[s] Primary exposure time	0.000000	3.2
[mm] SIM focus pos	-0.684267	-0.6828225247311905			
[mm] SIM defocus	0	0.001444936568705701			
[mm] SIM translation stage pos	-190.132523	-190.1400660498719			
[mm] SIM translation stage offset	0	0.00754346686406393			
[s] Observation start time (MET)	81191426.184000	81190338.865812			
Observation start date	2000-07-28T17:09:22	2000-07-28T16:52:18			
[s] Observation end time (MET)	81210426.184000	81211173.52908701			
Observation end date	2000-07-28T22:26:02	2000-07-28T22:39:33			
Read mode	TIMED	TIMED			

2.3 Aspect



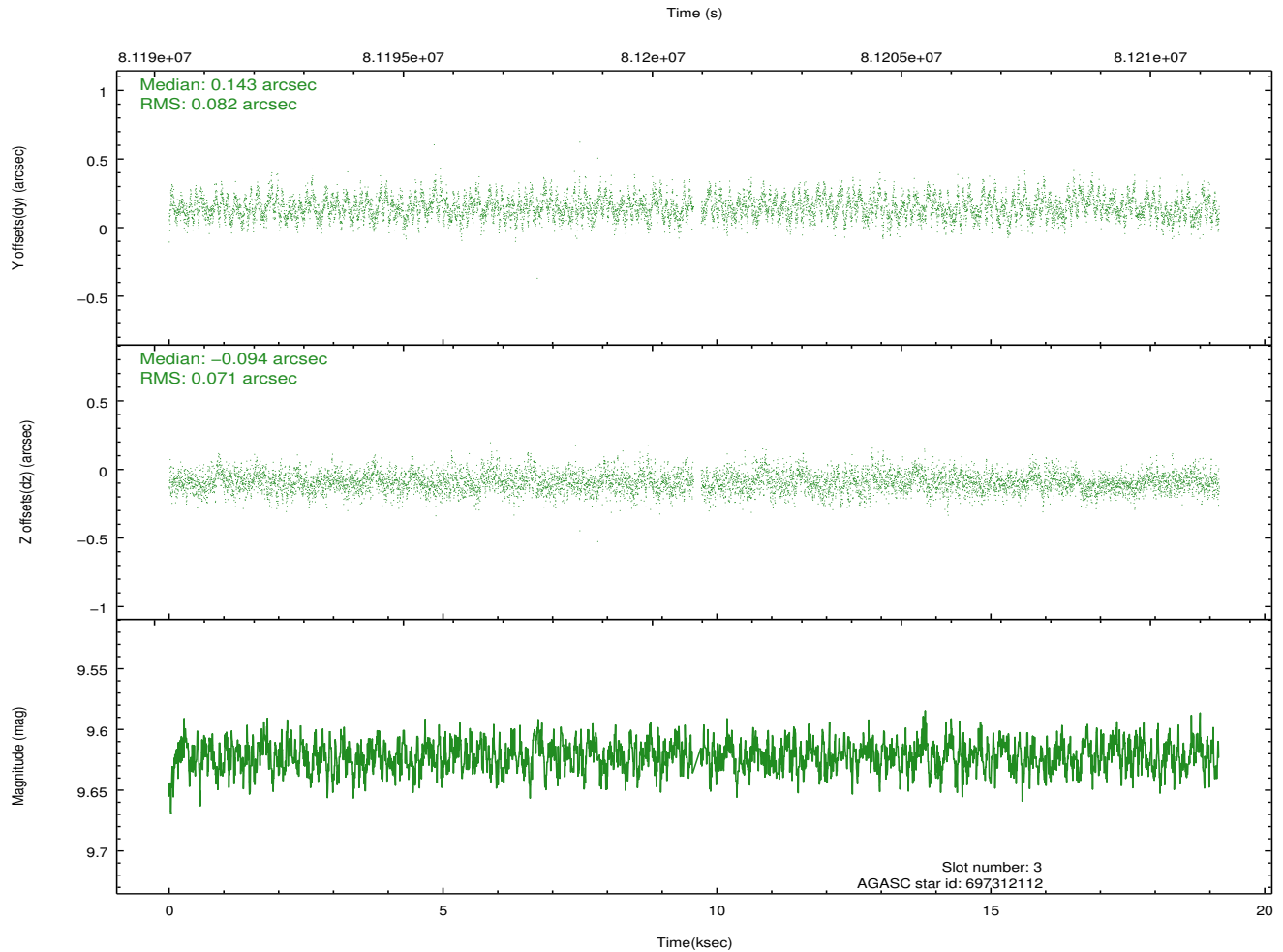
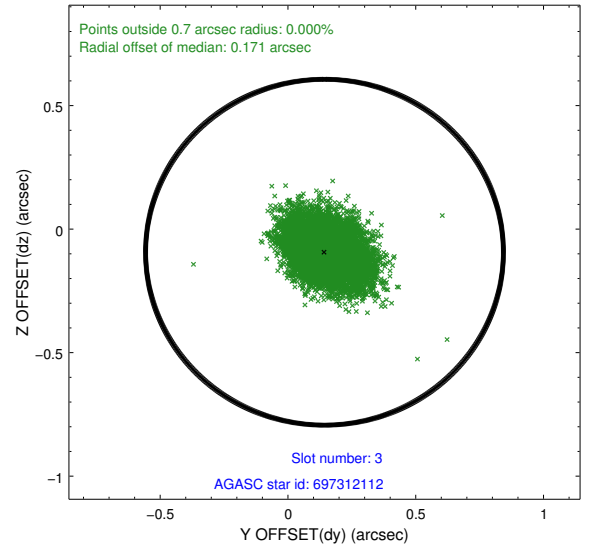
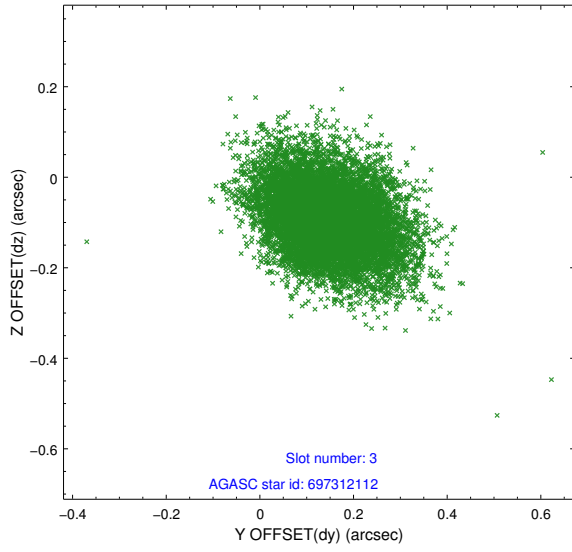


Slot Statistics

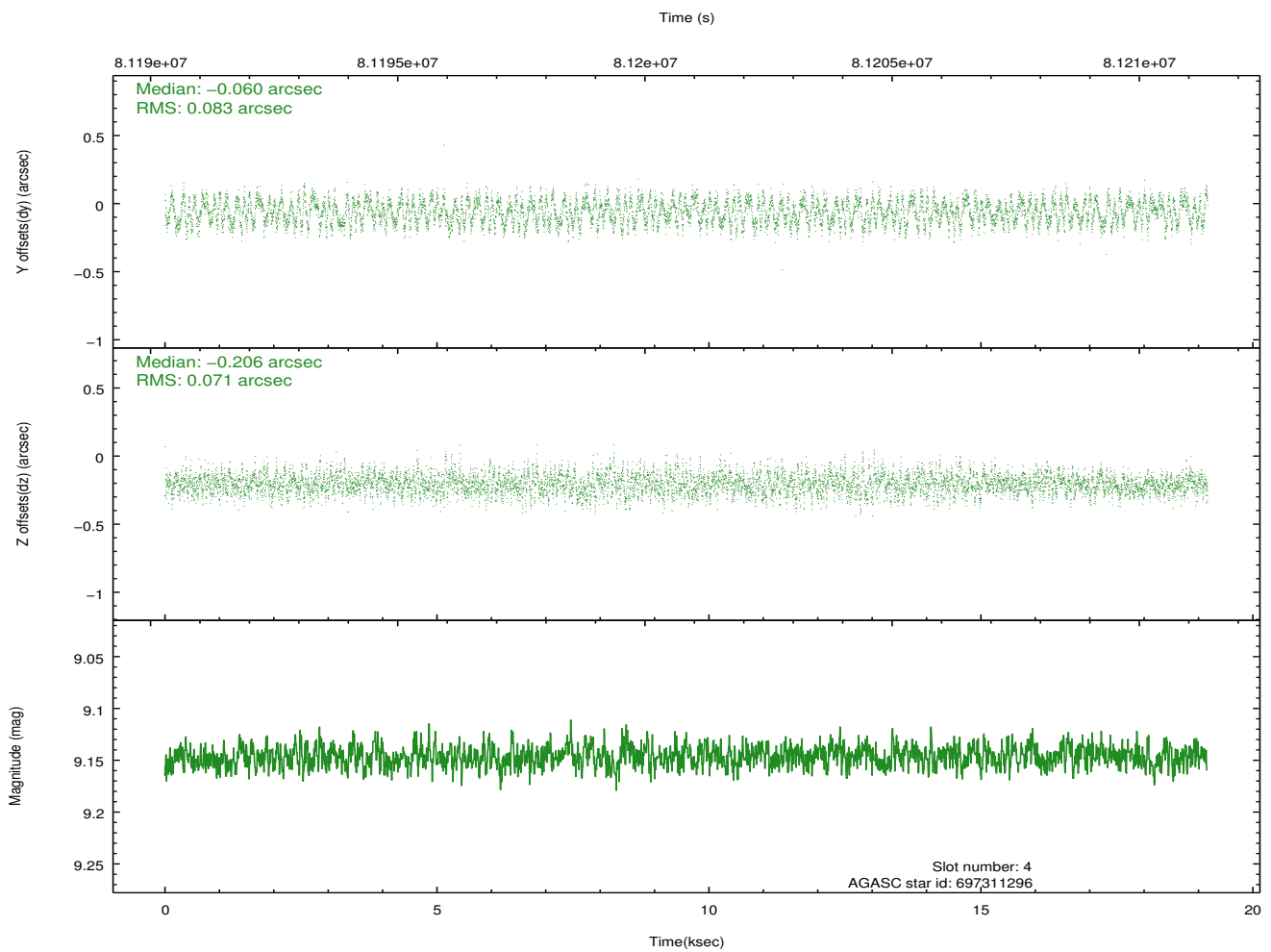
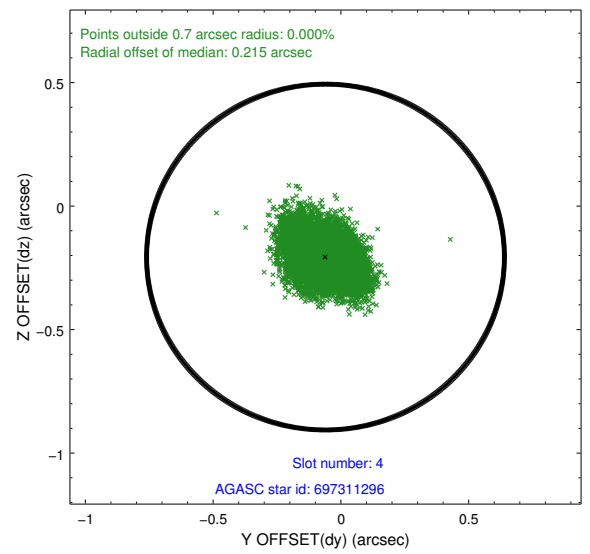
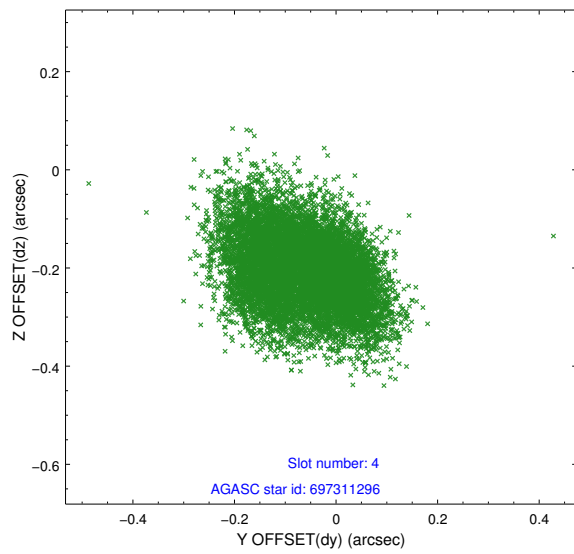
slot	status	id	mag	n_pts	med_dy	med_dz	dr1	dr2	ra	dec	mean_y	mean_z
0	FID	ACIS-S-2	7.11	4676	-0.038	0.000	0.009	0.015	0.000000	0.000000	-754.42	-1726.50
1	FID	ACIS-S-4	7.21	4674	-0.011	0.018	0.006	0.011	0.000000	0.000000	2158.78	181.81
2	FID	ACIS-S-5	7.24	4674	0.018	-0.010	0.010	0.019	0.000000	0.000000	-1806.96	175.66
3	GUIDE	697312112	9.62	9277	0.143	-0.094	0.114	0.189	68.203644	-13.816922	-1408.88	1606.48
4	GUIDE	697311296	9.15	9349	-0.060	-0.206	0.118	0.186	67.817784	-13.358108	677.01	2052.59
5	GUIDE	697303120	9.77	9345	-0.099	0.143	0.110	0.185	68.753732	-12.776019	1036.63	-1824.46
6	GUIDE	697317872	9.89	9346	-0.118	0.287	0.144	0.238	68.842801	-12.751213	972.13	-2143.48
7	GUIDE	697311800	9.67	9347	0.137	-0.134	0.102	0.172	68.465085	-13.769624	-1676.30	715.80

2.4 Star Slots

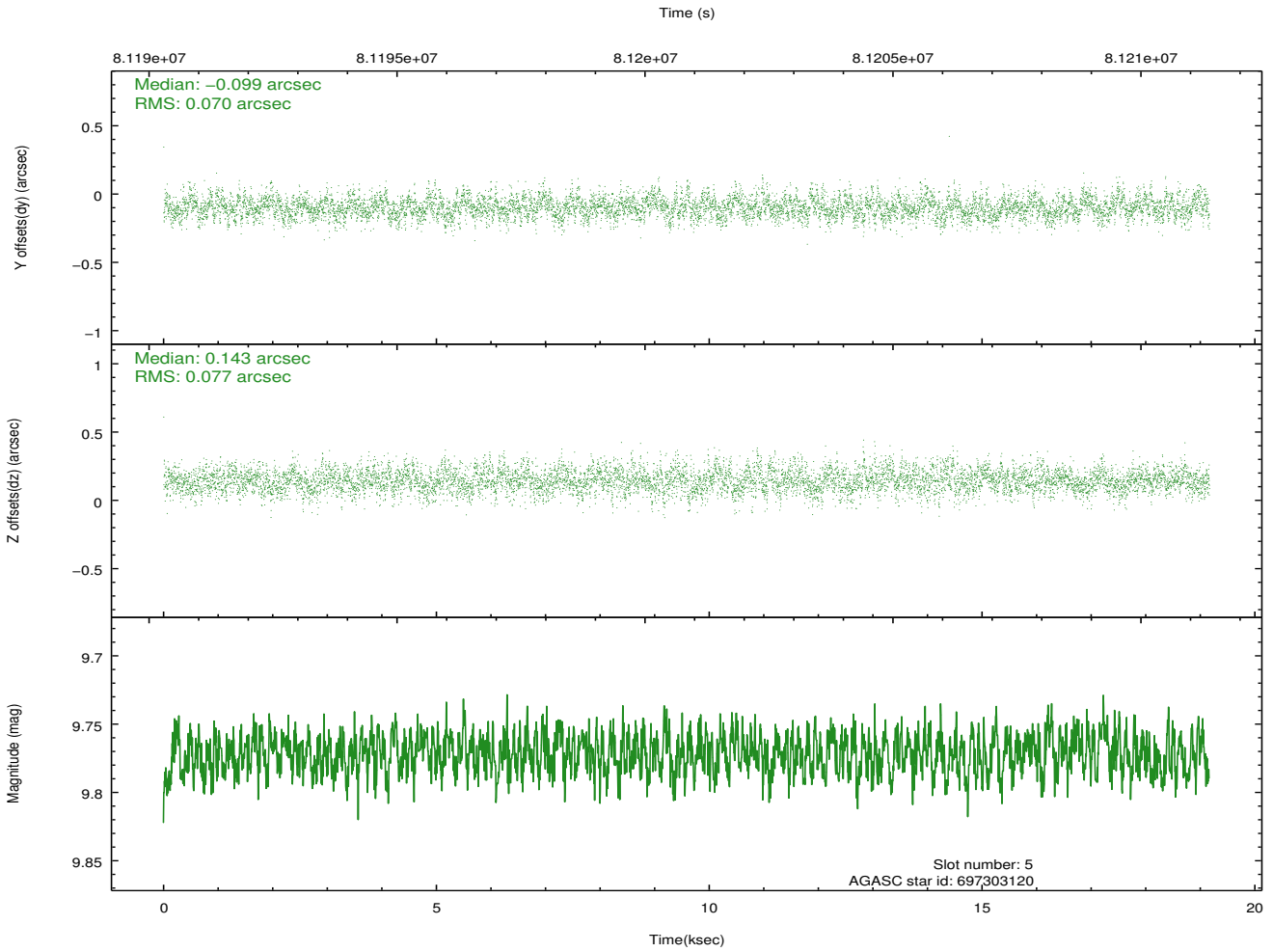
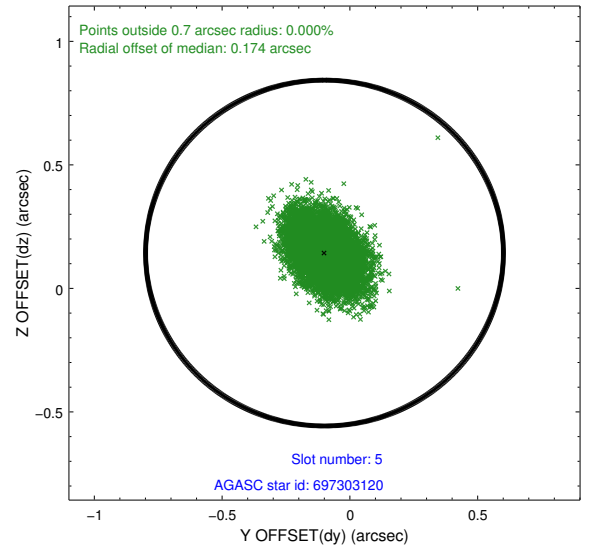
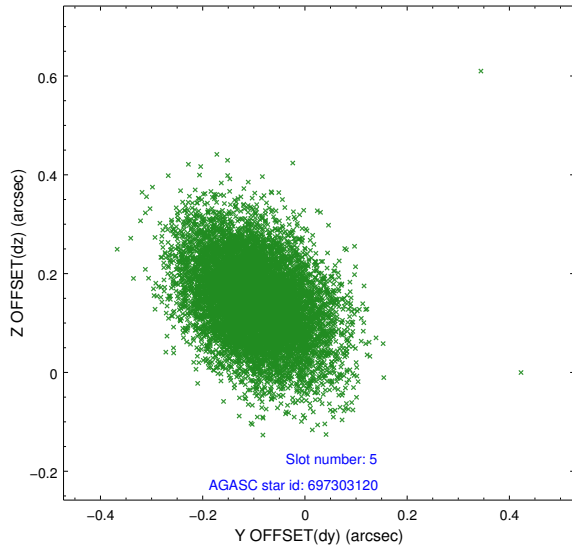
2.4.1 Slot 3



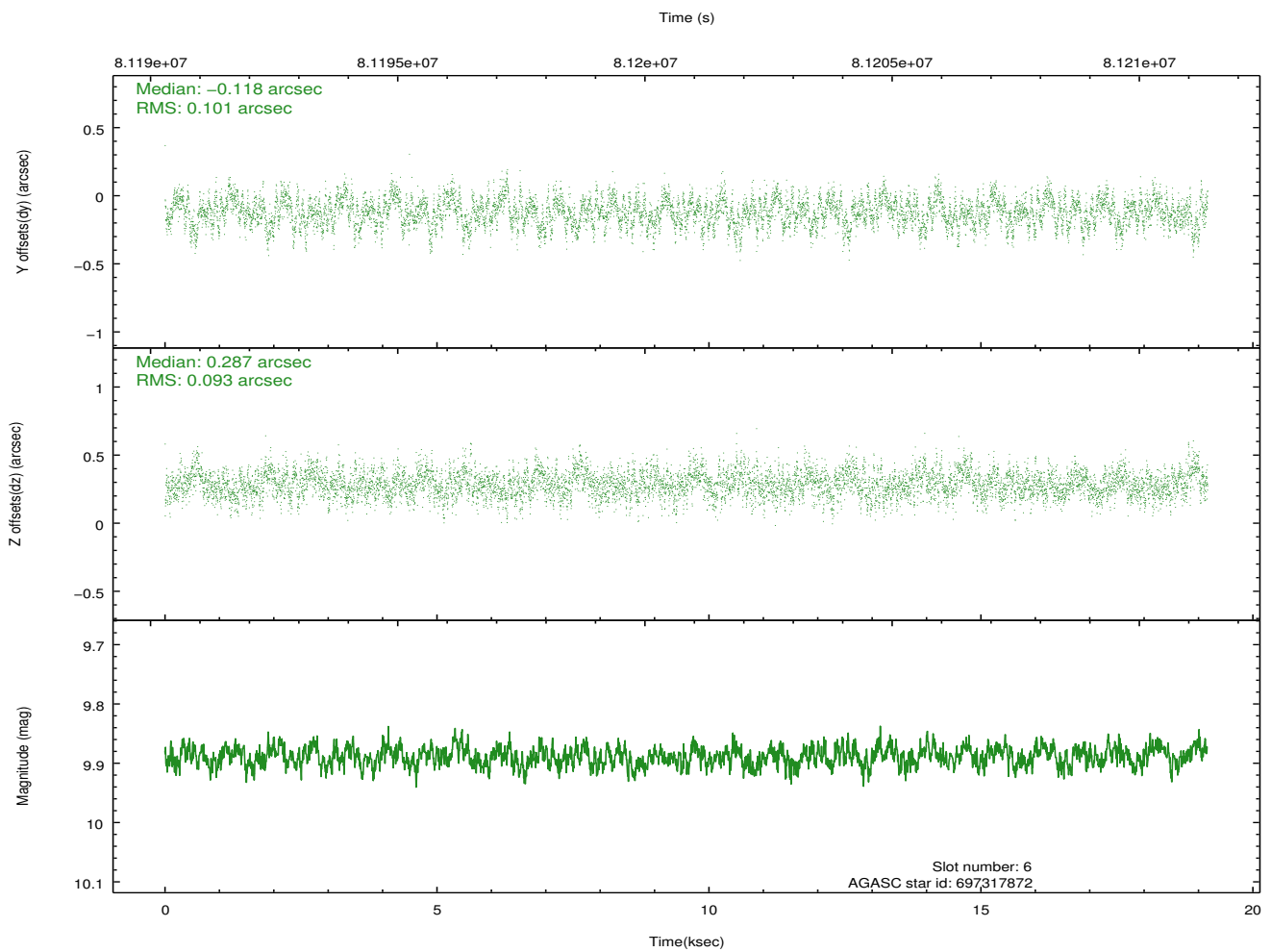
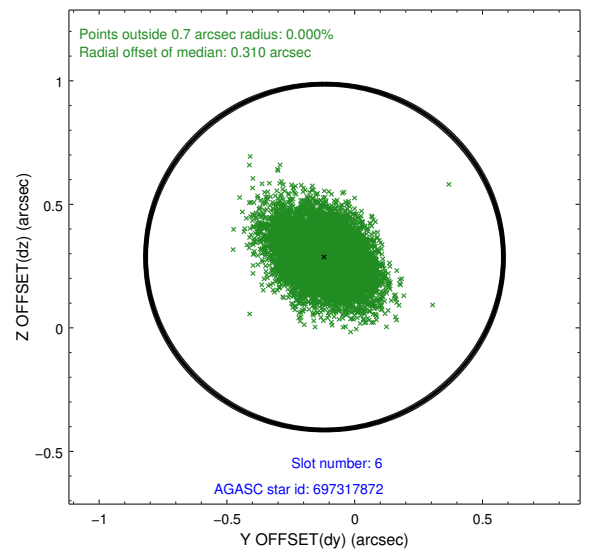
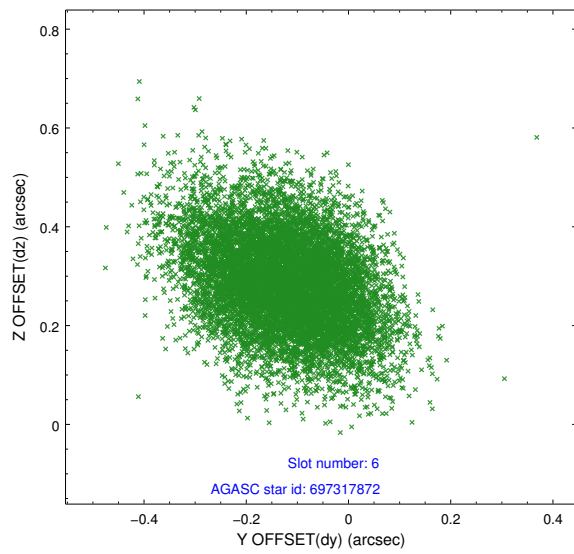
2.4.2 Slot 4



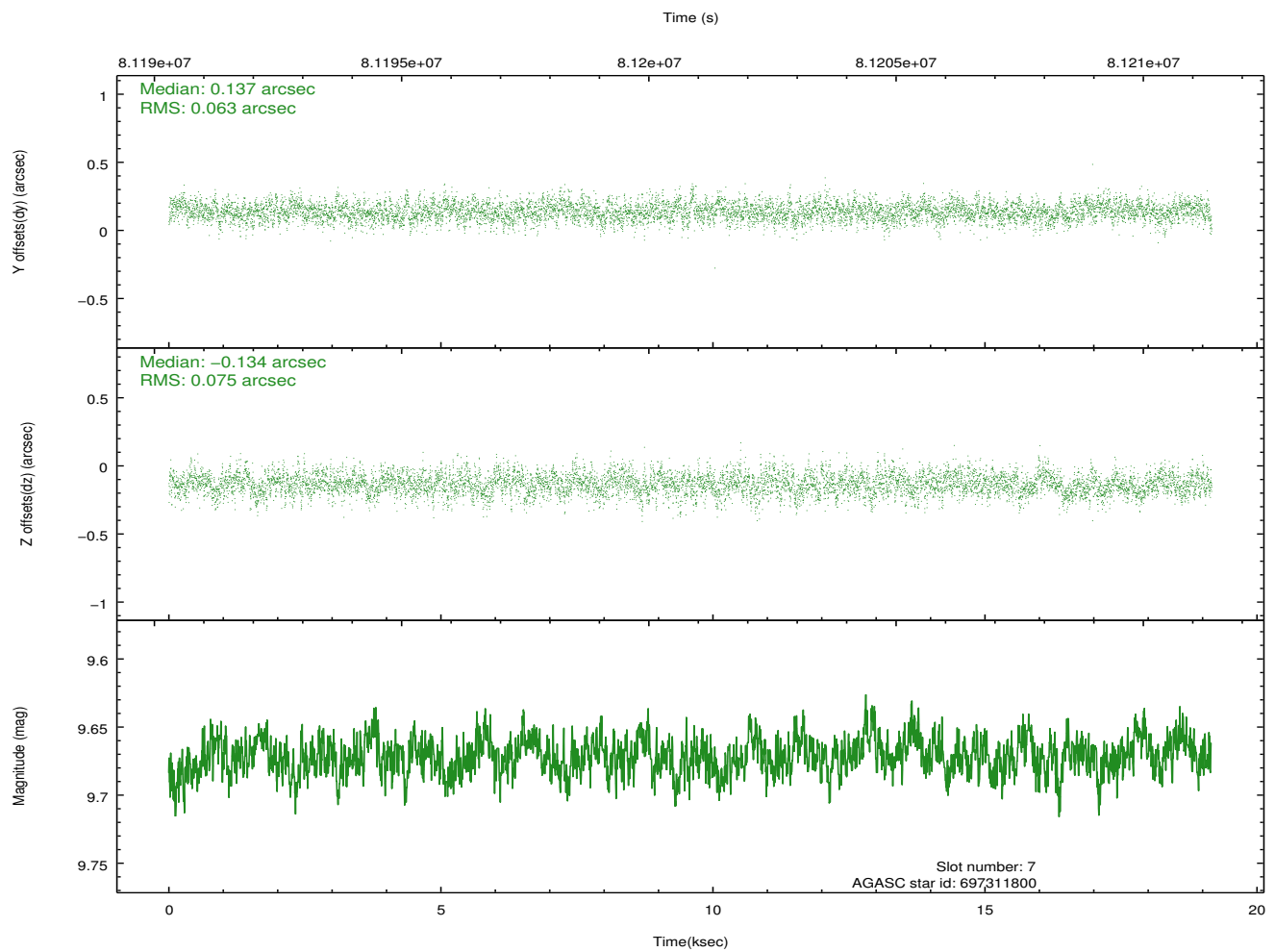
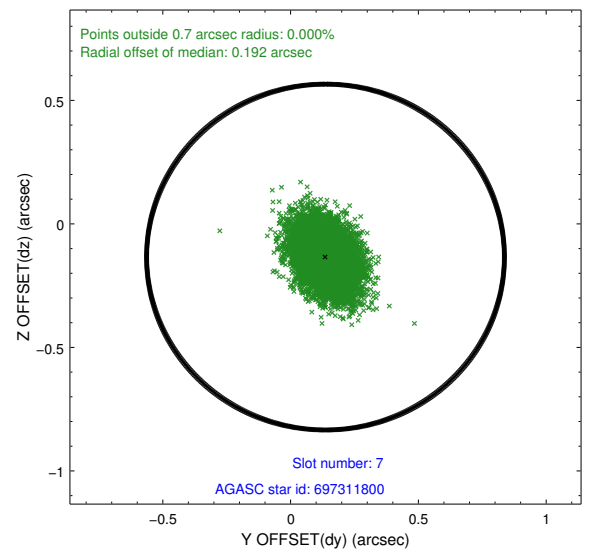
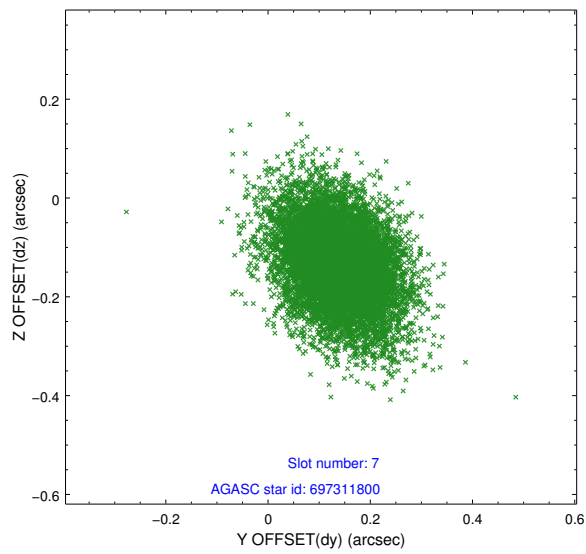
2.4.3 Slot 5



2.4.4 Slot 6

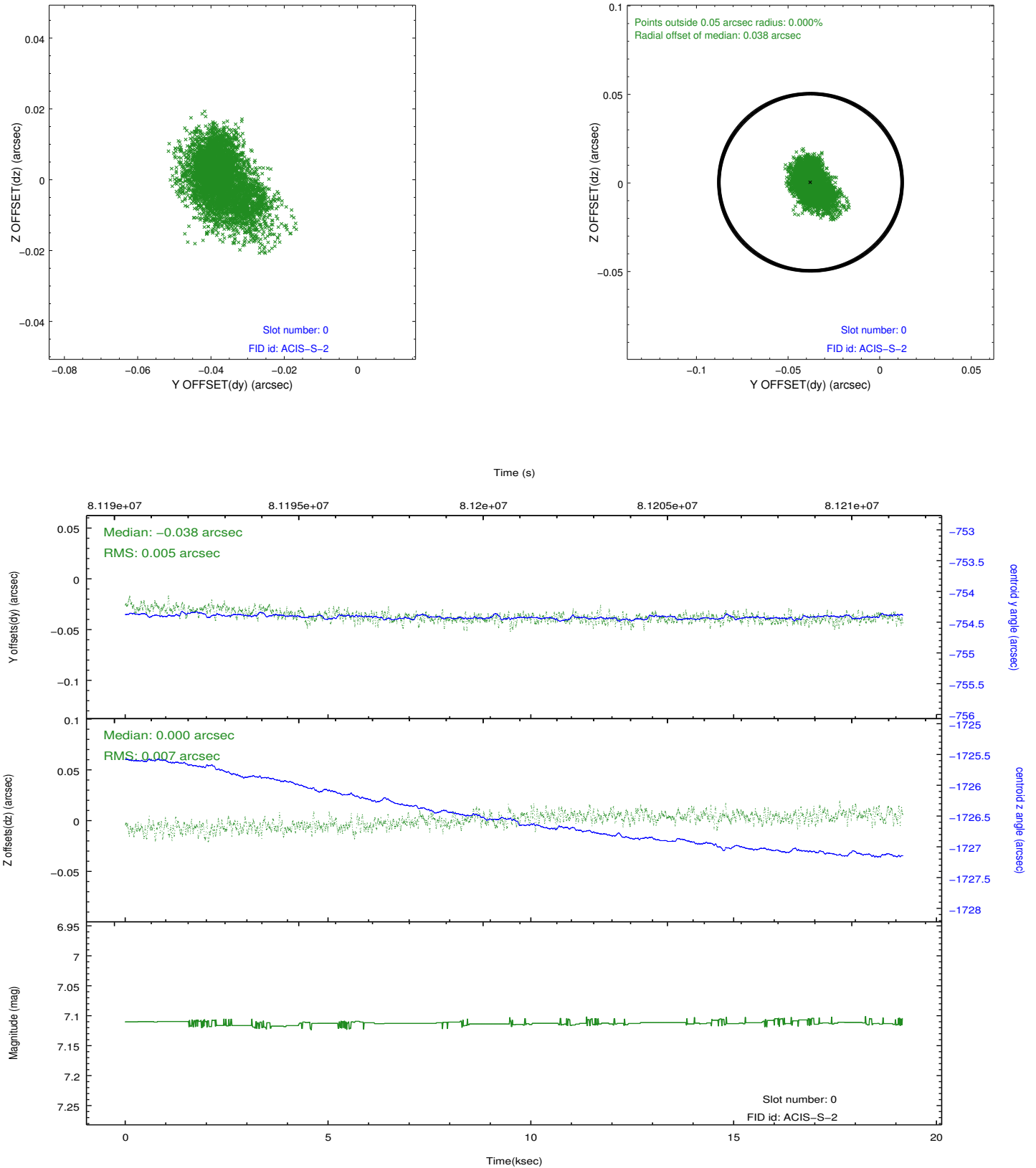


2.4.5 Slot 7

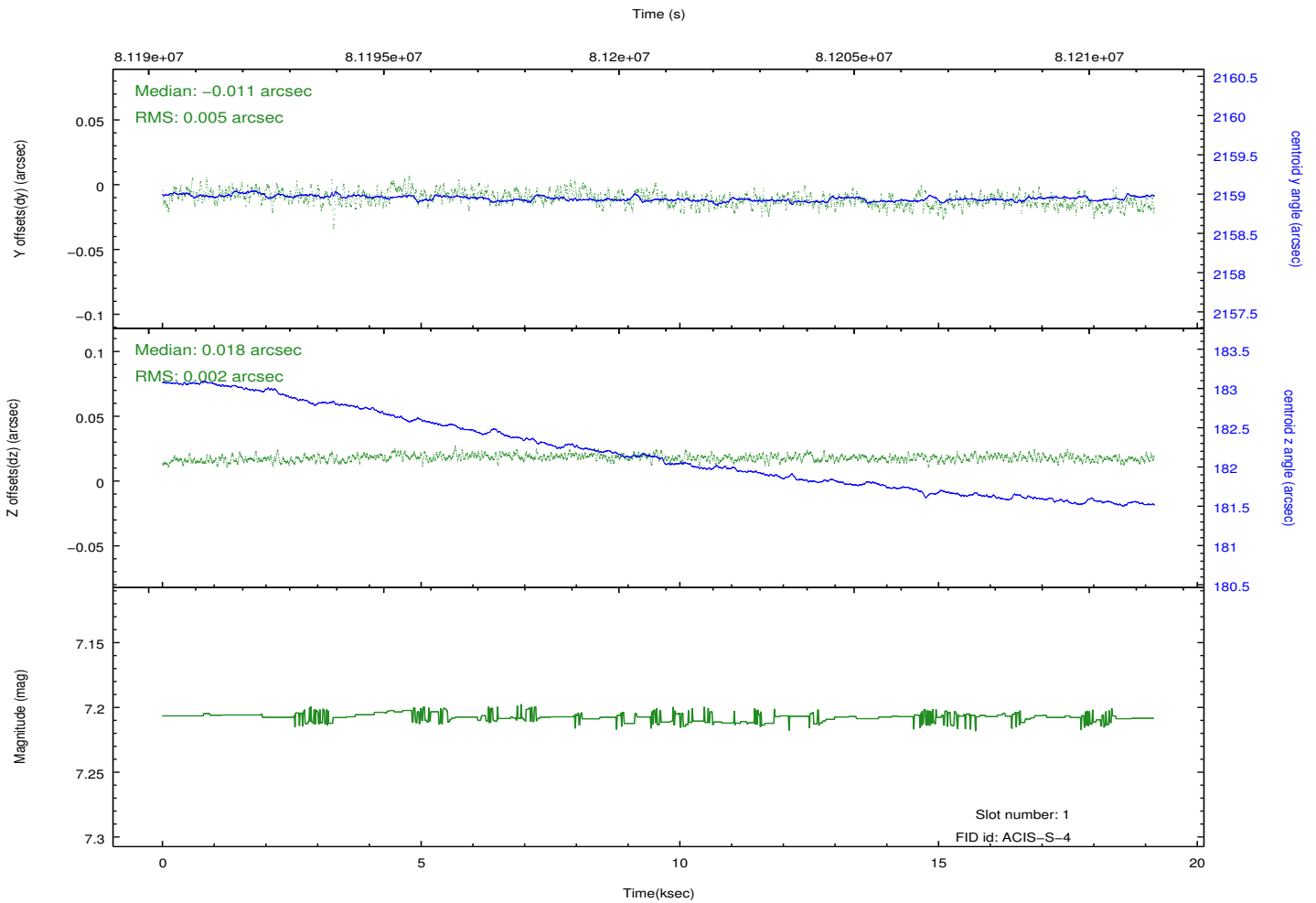
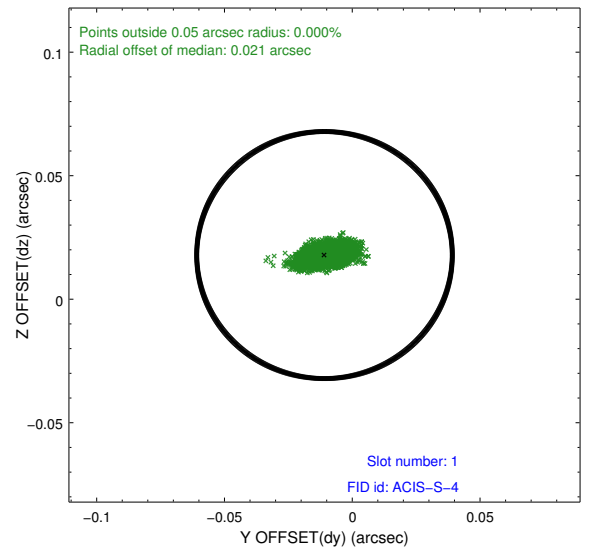
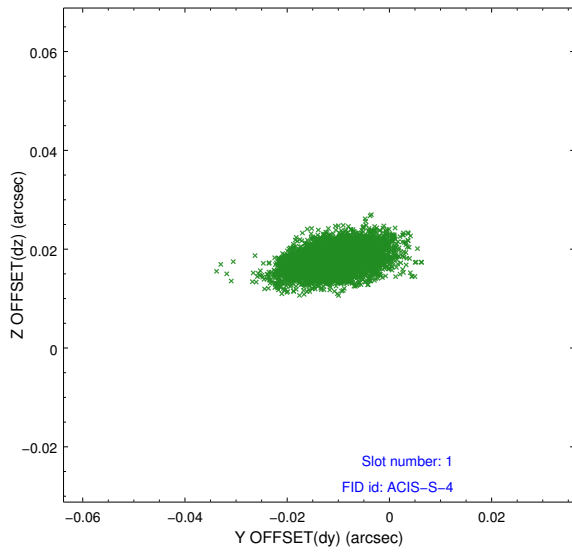


2.5 FID Slots

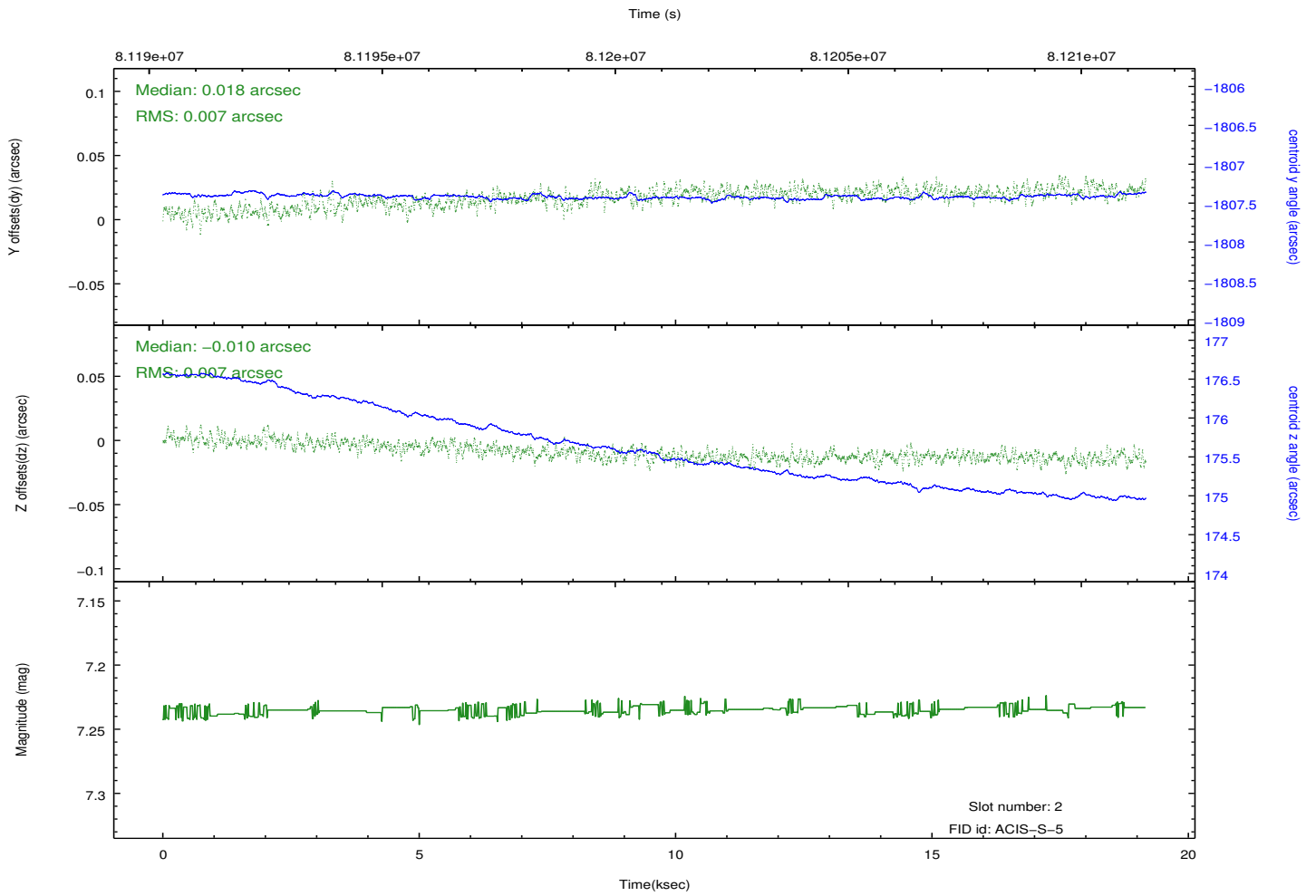
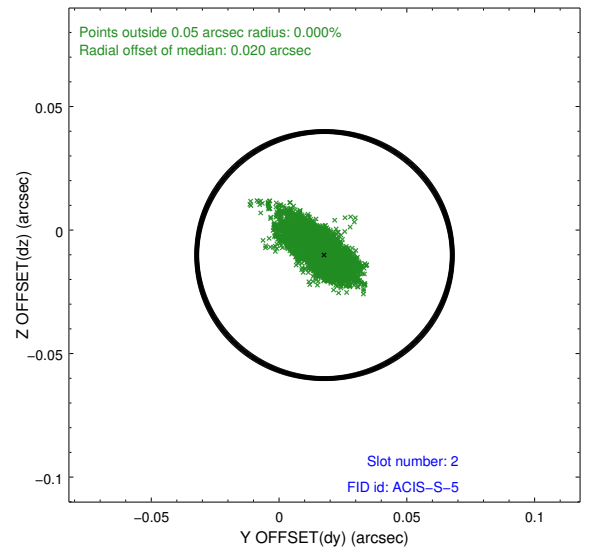
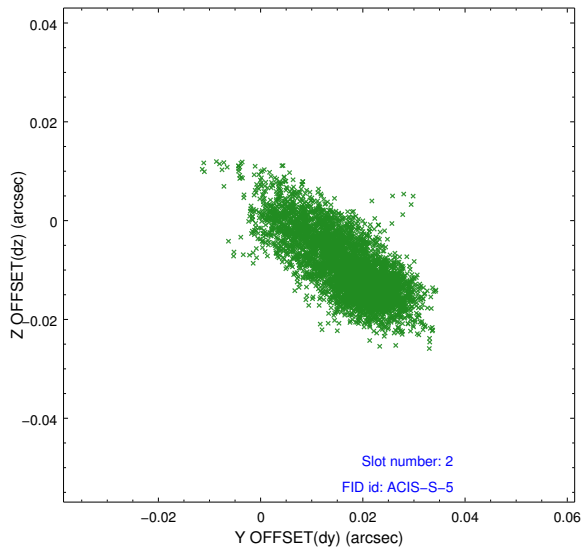
2.5.1 Slot 0



2.5.2 Slot 1



2.5.3 Slot 2



A Summary

A.1 Status

V&V Scientist	Jen Lauer
V&V Date (YYYY-MM-DD)	2012.09.05
V&V Edition	1
V&V Disposition and Status	OK
V&V Charge Time	19.161

A.2 Comments

Count rate rises in latter half of observation.