

V&V Reference Report

L2 ASCDS Version : 8.4.4

Observation 9341 - L2 Version 2
Chandra X-Ray Center

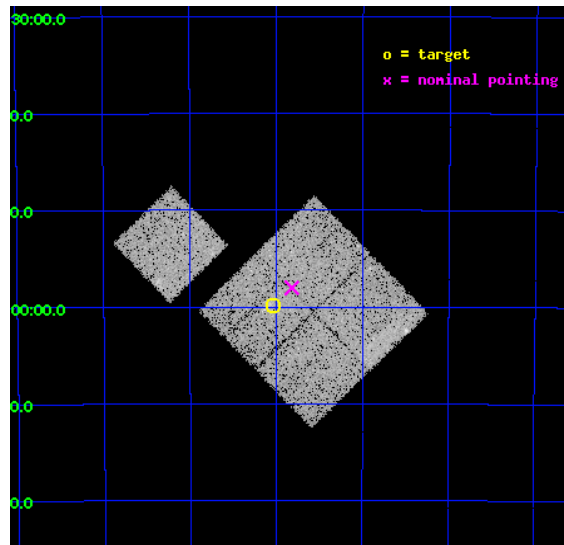
L2 Processing Date : May 30 2012

Contents

1	Front	2
2	OBI	3
2.1	OBI	3
2.1.1	Images	3
2.1.2	Bias	3
2.1.3	Parameters	4
2.1.4	Events	4
2.2	Compared Parameters	5
2.3	Aspect	6
2.4	Star Slots	9
2.4.1	Slot 3	9
2.4.2	Slot 4	10
2.4.3	Slot 5	11
2.4.4	Slot 6	12
2.4.5	Slot 7	13
2.5	FID Slots	14
2.5.1	Slot 0	14
2.5.2	Slot 1	15
2.5.3	Slot 2	16
A	Summary	17
A.1	Status	17
A.2	Comments	17

1 Front

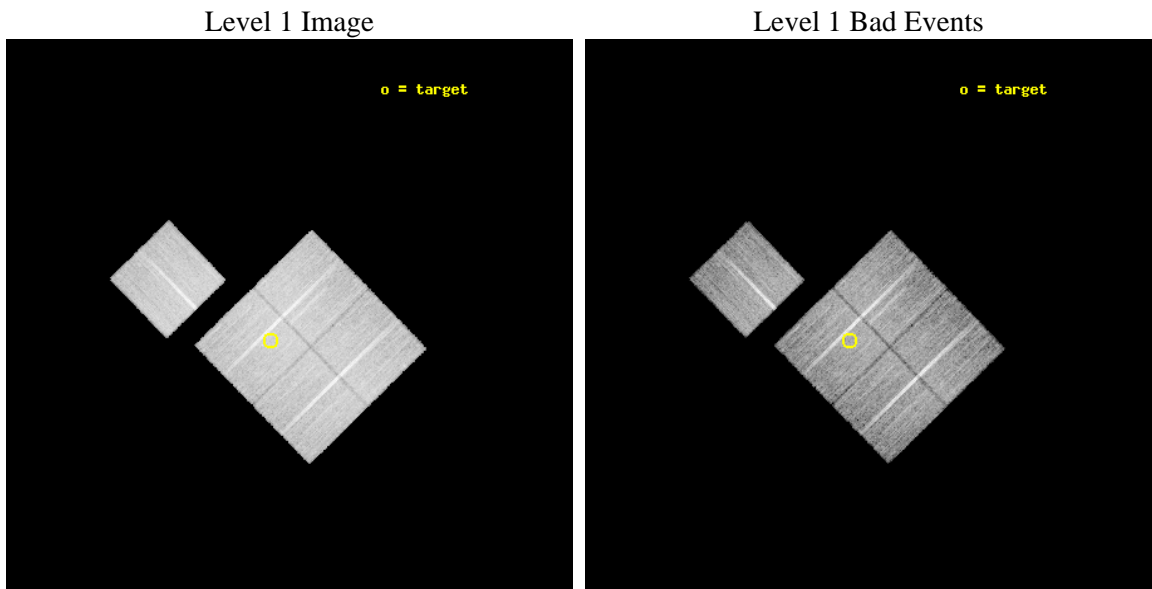
seq_num	800678	Sequence number
obs_id	9341	Observation id
title	South Pole Telescope (SPT) - Chandra Cluster Cosmology	Proposal ti
observer	Dr. Stephen Murray	Principal investigator
object	SPT-CL 0528-5300	Source name
dtycle	0	
cycle	P	events from which exps? Prim/Second/Both
ra_targ	82.011	Observer's specified target RA [deg]
dec_targ	-52.998	Observer's specified target Dec [deg]
ra_nom	81.954864342338	Nominal RA [deg]
dec_nom	-52.967285922672	Nominal Dec [deg]
roll_nom	315.73084477513	Nominal Roll [deg]
revision	2	Processing version of data
ontime	15041.200115681	Sum of GTIs [s]
livetime	14844.675762999	Livetime [s]
ontime0	15041.200115681	Sum of GTIs [s]
ontime1	15038.059135377	Sum of GTIs [s]
ontime2	15041.200115681	Sum of GTIs [s]
ontime3	15038.059125483	Sum of GTIs [s]
ontime6	15041.200115681	Sum of GTIs [s]
l2events	55273	Number of level 2 events



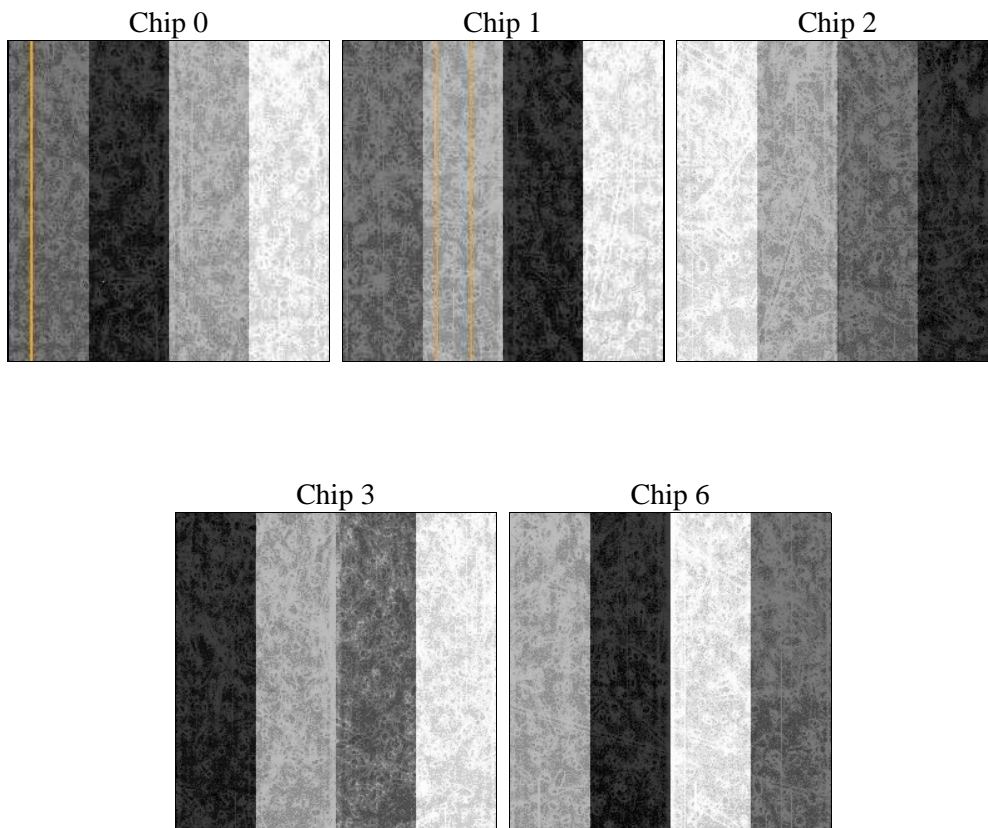
2 OBI

2.1 OBI

2.1.1 Images



2.1.2 Bias



2.1.3 Parameters

obi_num	0	Obi number	sched_exp_time	15000.000000	[s] Scheduled observation exposure time
ascdsver	8.4.4	Processing system revision	ontime	15041.200115681	Sum of GTIs [s]
caldbver	4.4.9	 	ontime0	15041.200115681	Sum of GTIs [s]
date	2012-05-30T05:59:40	Date and time of file creation	ontime1	15038.059135377	Sum of GTIs [s]
revision	2	Processing version of data	ontime2	15041.200115681	Sum of GTIs [s]
			ontime3	15038.059125483	Sum of GTIs [s]
			ontime6	15041.200115681	Sum of GTIs [s]
			l1events	629949	Number of level 1 events

2.1.4 Events

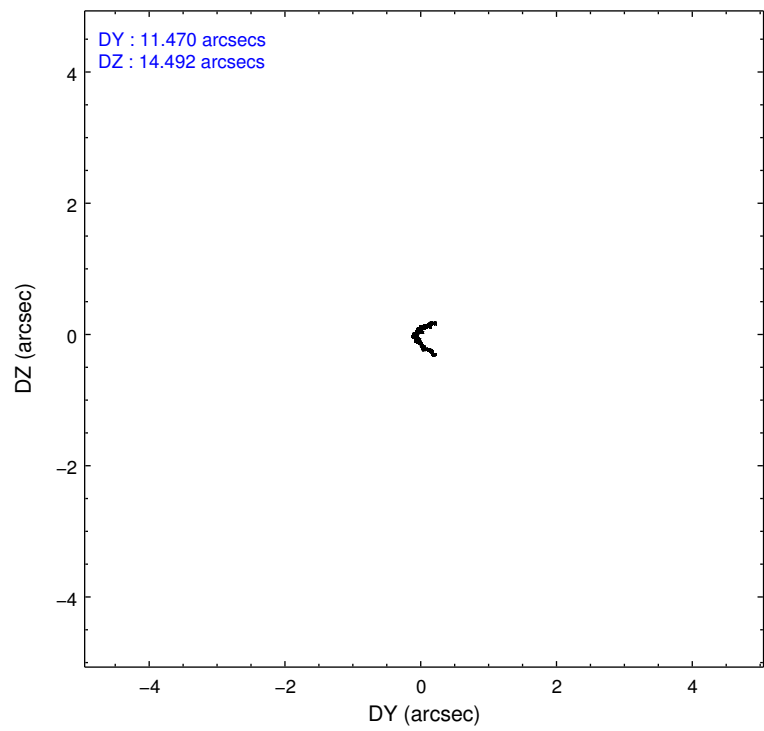
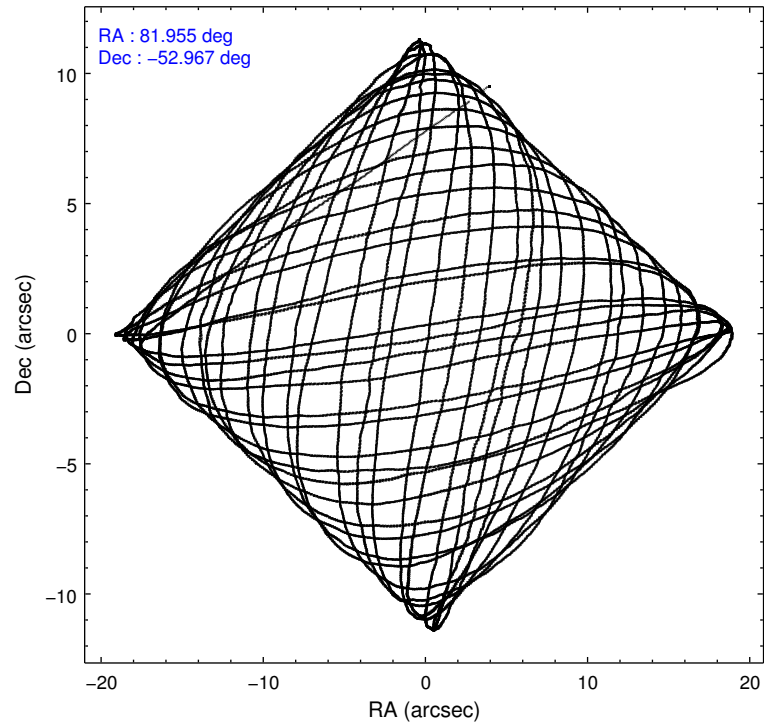
	ccd 0	ccd 1	ccd 2	ccd 3	ccd 6
level 1 events	118754	120116	131931	130610	128538
rejected events	105766	105241	118904	118404	115121
rejected %	89%	87%	90%	90%	89%

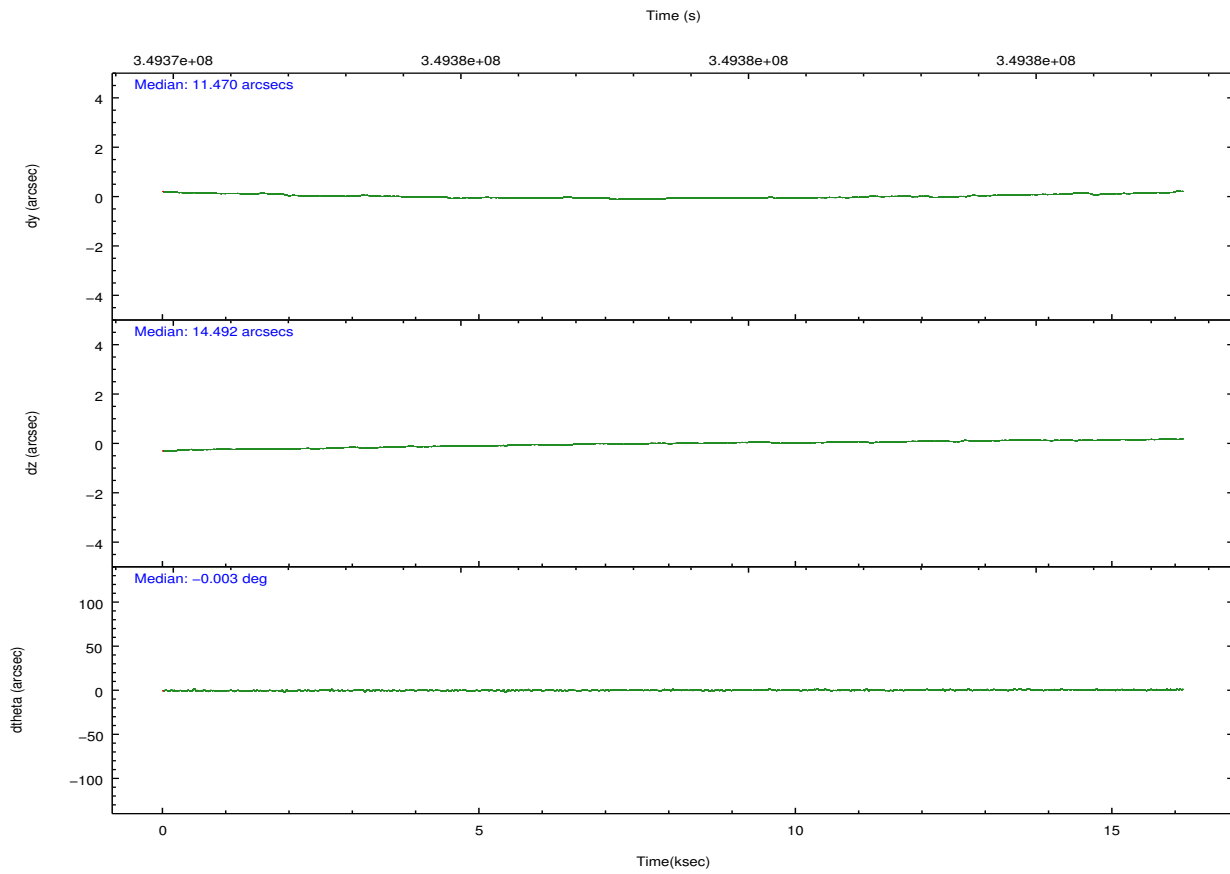
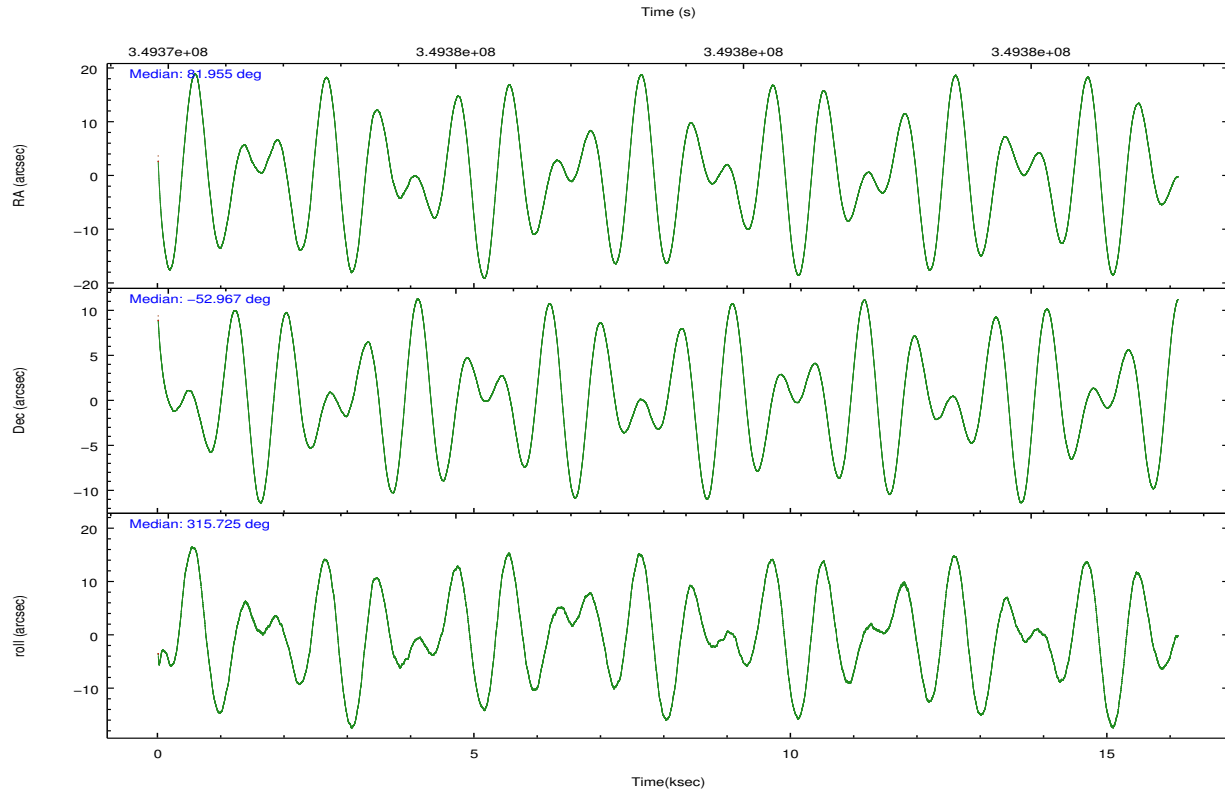
	ccd 0	ccd 1	ccd 2	ccd 3	ccd 6
grade 0 events	4377	5415	4787	4304	4672
	3%	4%	3%	3%	3%
grade 1 events	64	65	71	85	65
	0%	0%	0%	0%	0%
grade 2 events	3319	3423	3121	2663	3004
	2%	2%	2%	2%	2%
grade 3 events	1433	1557	1351	1386	1402
	1%	1%	1%	1%	1%
grade 4 events	1295	1488	1367	1381	1359
	1%	1%	1%	1%	1%
grade 5 events	4513	5000	4340	5175	5281
	3%	4%	3%	3%	4%
grade 6 events	2565	2995	2404	2476	2988
	2%	2%	1%	1%	2%
grade 7 events	101188	100173	114490	113140	109767
	85%	83%	86%	86%	85%

2.2 Compared Parameters

Parameter	Planned	Actual	Parameter	Planned	Actual
Instrument	ACIS	ACIS	Obspar format version number	7	7
Detector	ACIS-01236	ACIS-01236	Obspar file type	PREDICTED	ACTUAL
Grating	NONE	NONE	Obspar update status	NONE	UPDATED
Data mode	VFAINT	VFAINT	CCD I0 on	Y	Y
Observation mode	POINTING	POINTING	CCD I1 on	Y	Y
[deg] Pointing RA	81.910602	81.95486434233841	CCD I2 on	Y	Y
[deg] Pointing Dec	-52.960601	-52.96728592267191	CCD I3 on	Y	Y
[deg] Pointing Roll	315.486843	315.7308447751309	CCD S0 on	N	N
[mm] SIM focus pos	-0.782348	-0.7809083437167272	CCD S1 on	N	N
[mm] SIM defocus	0	0.001439871863259334	CCD S2 on	O1	Y
[mm] SIM translation stage pos	-225.840463	-225.8433433320239	CCD S3 on	N	N
[mm] SIM translation stage offset	-7.752	-7.749109670905796	CCD S4 on	N	N
[s] Observation start time (MET)	349371746.184000	349369815.05724	CCD S5 on	N	N
Observation start date	2009-01-26T15:41:20	2009-01-26T15:10:15	Number of optional ACIS chips dropped	0	0
[s] Observation end time (MET)	349386746.184000	349387610.08312	On-chip summing requested	N	N
Observation end date	2009-01-26T19:51:20	2009-01-26T20:06:50	Subarray requested	NONE	NONE
Read mode	TIMED	TIMED	Alternating exposures requested	N	N
			[s] Primary exposure time	0.000000	3.1

2.3 Aspect



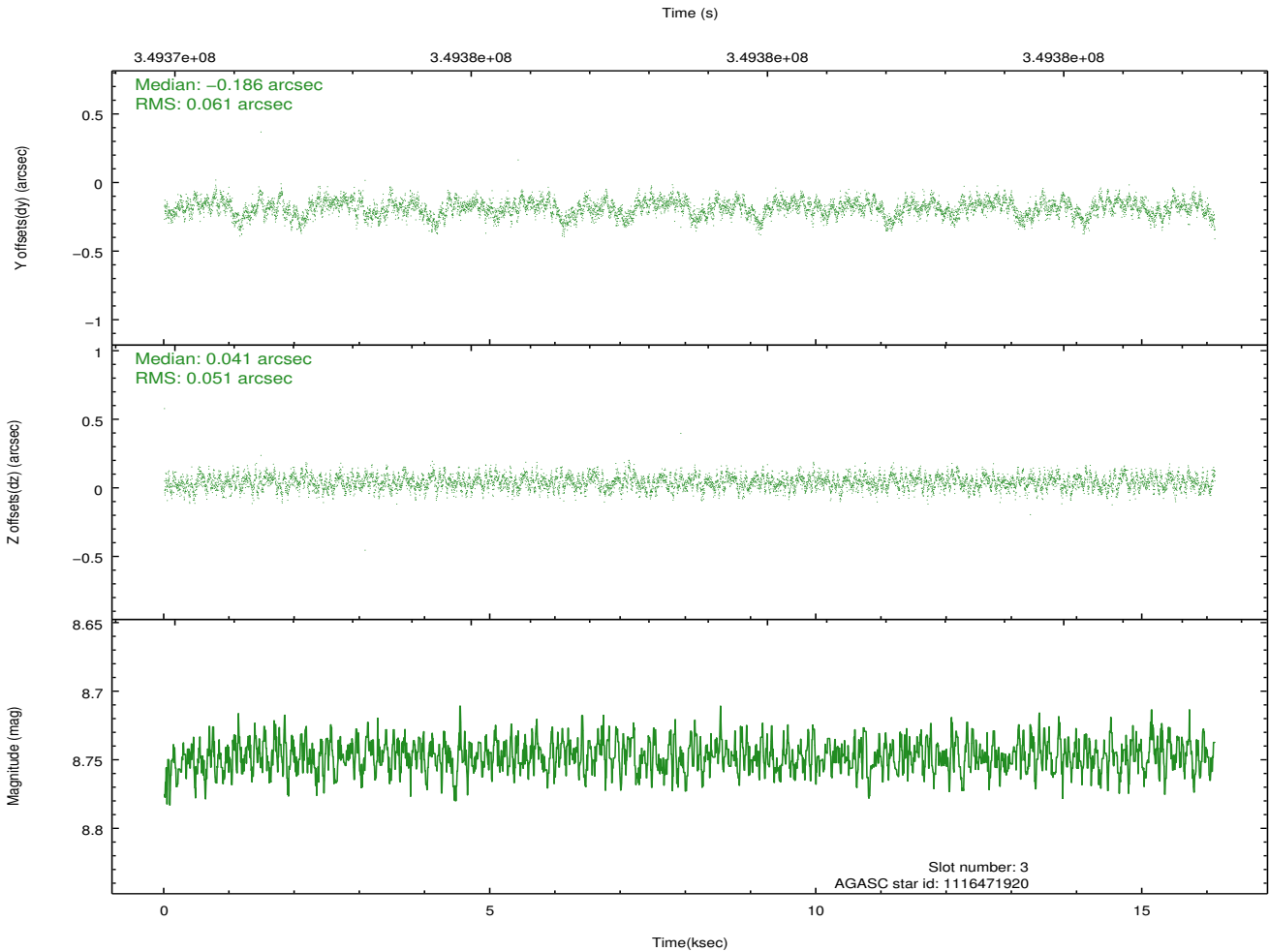
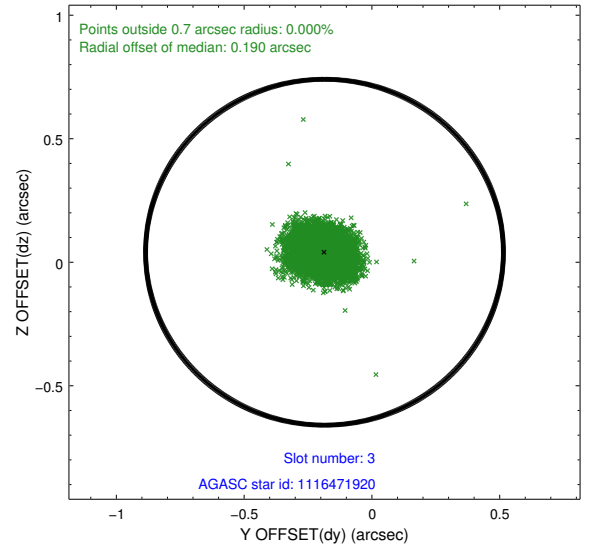
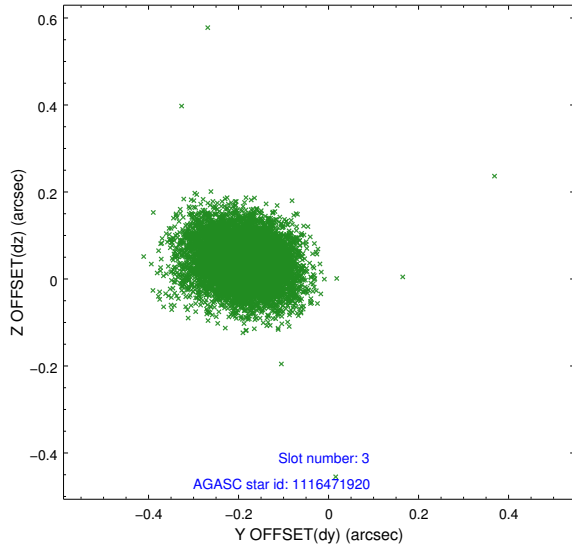


Slot Statistics

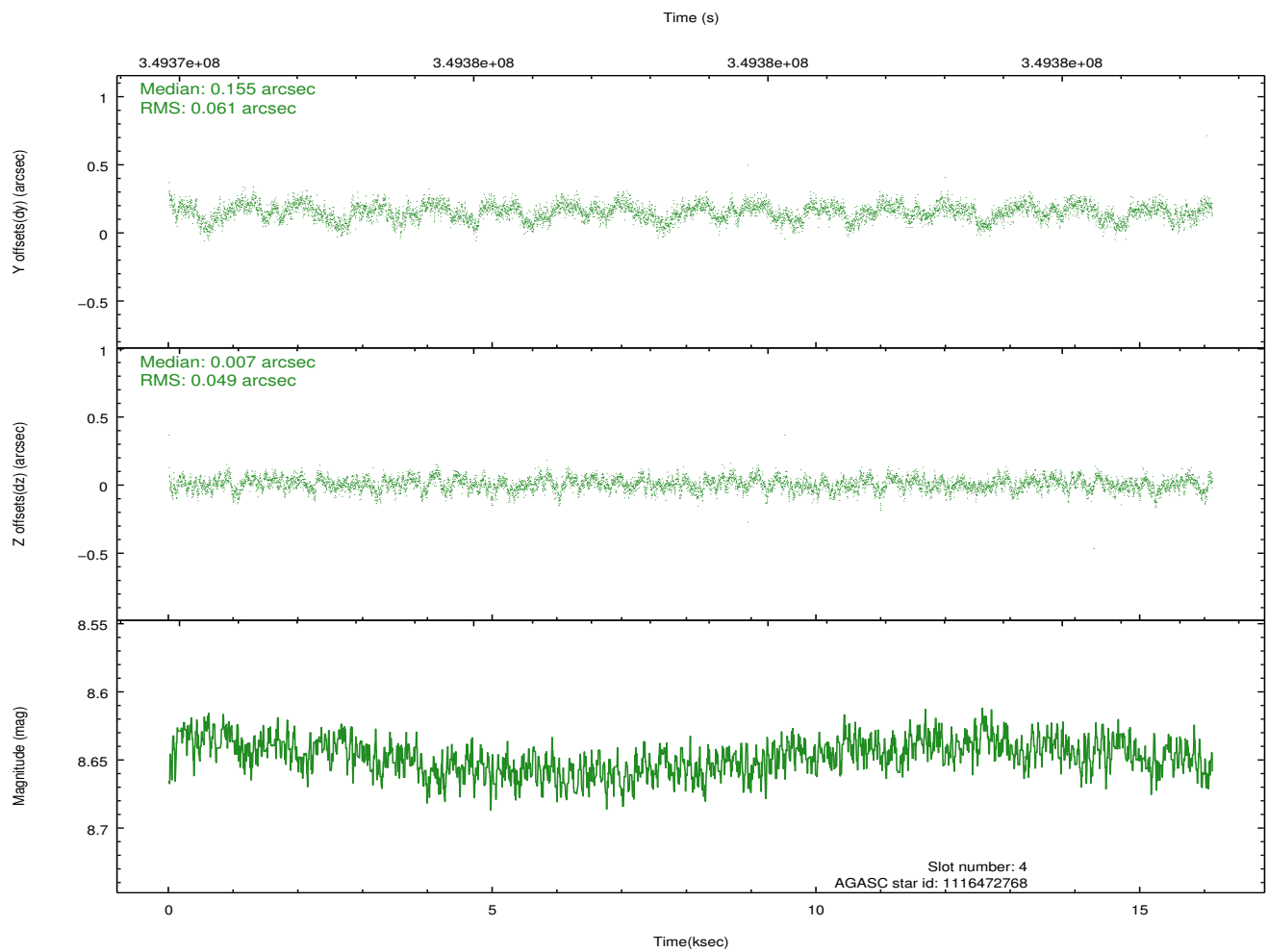
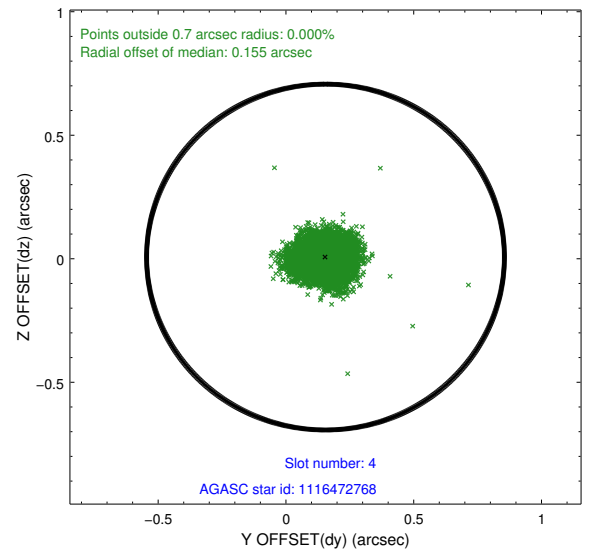
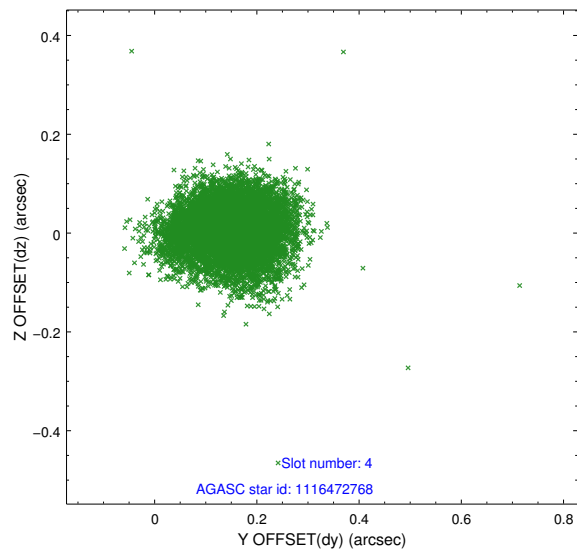
slot	status	id	mag	n_pts	med_dy	med_dz	dr1	dr2	ra	dec	mean_y	mean_z
0	FID	ACIS-I-1	7.03	3930	0.099	-0.081	0.007	0.014	0.000000	0.000000	928.04	-997.20
1	FID	ACIS-I-5	7.00	3930	-0.240	0.086	0.006	0.012	0.000000	0.000000	-1820.29	900.24
2	FID	ACIS-I-6	7.04	3930	0.050	0.066	0.007	0.012	0.000000	0.000000	393.20	1545.07
3	GUIDE	1116471920	8.75	7858	-0.186	0.041	0.084	0.137	82.785416	-52.710471	737.14	1971.94
4	GUIDE	1116472768	8.65	7855	0.155	0.007	0.083	0.132	81.201044	-52.621201	-1956.67	-220.91
5	GUIDE	1116473696	7.53	7860	-0.073	0.041	0.076	0.115	81.306955	-52.676900	-1651.90	-199.15
6	GUIDE	1116480536	8.47	7851	-0.068	0.177	0.077	0.122	81.460168	-53.582672	885.75	-2273.41
7	GUIDE	1061427632	8.92	7853	0.177	-0.261	0.083	0.134	82.581997	-52.440638	-256.81	2362.95

2.4 Star Slots

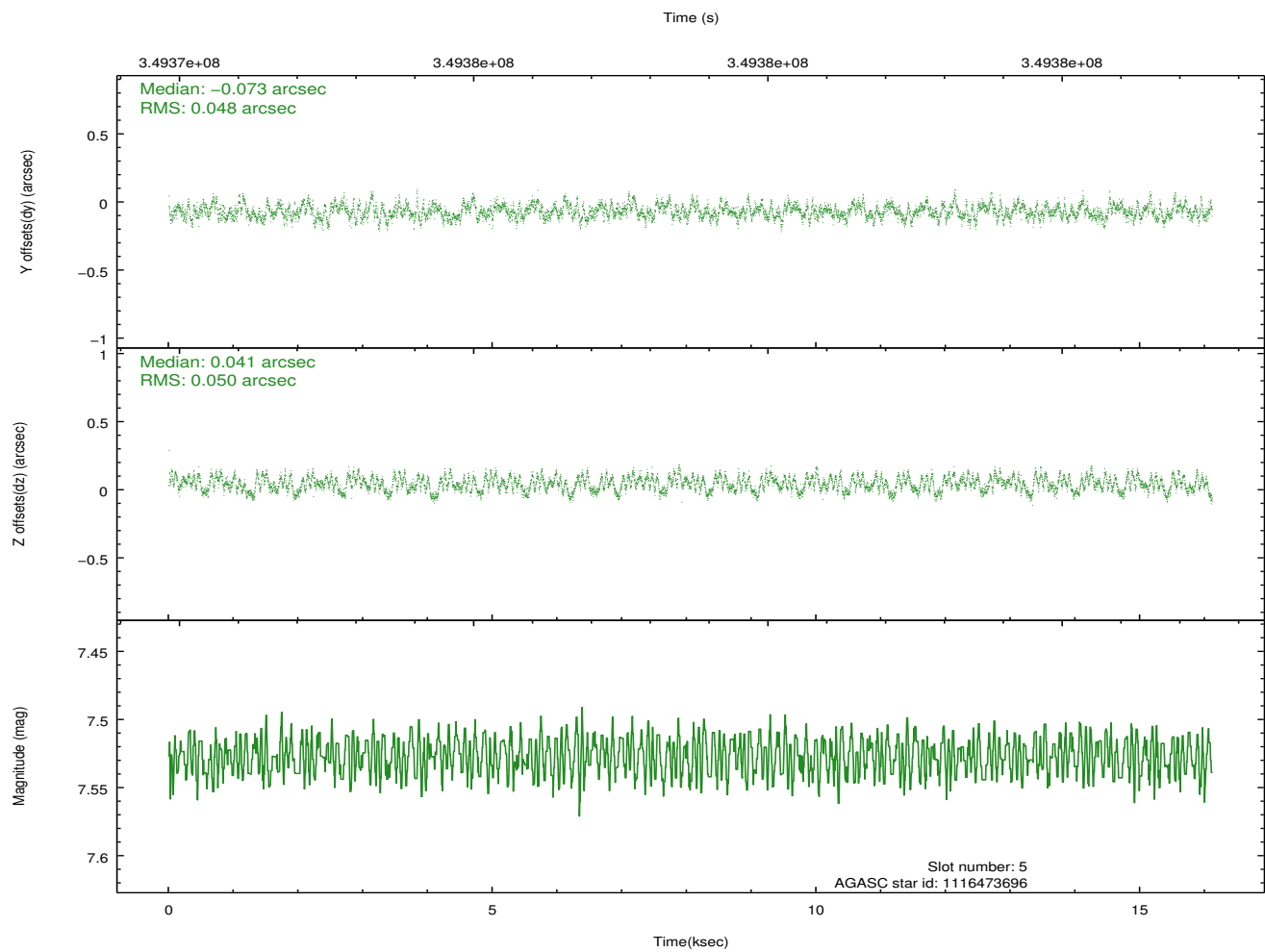
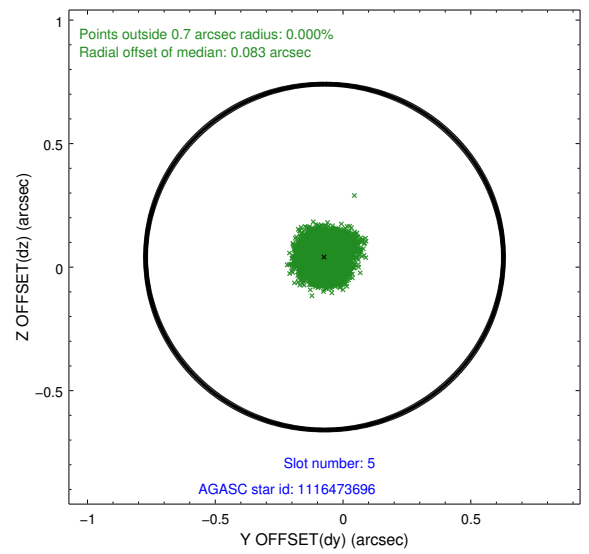
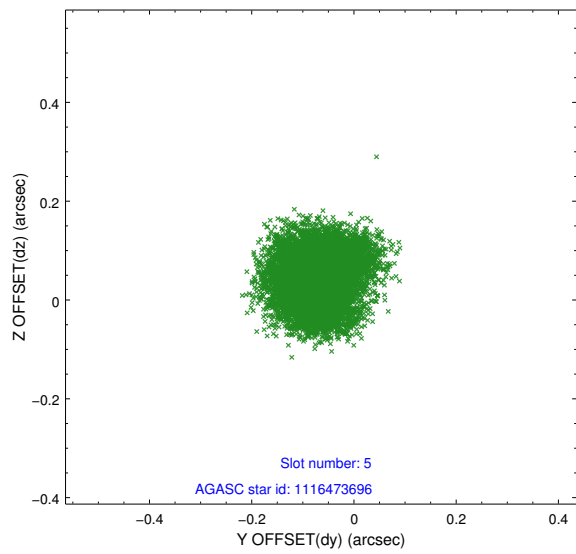
2.4.1 Slot 3



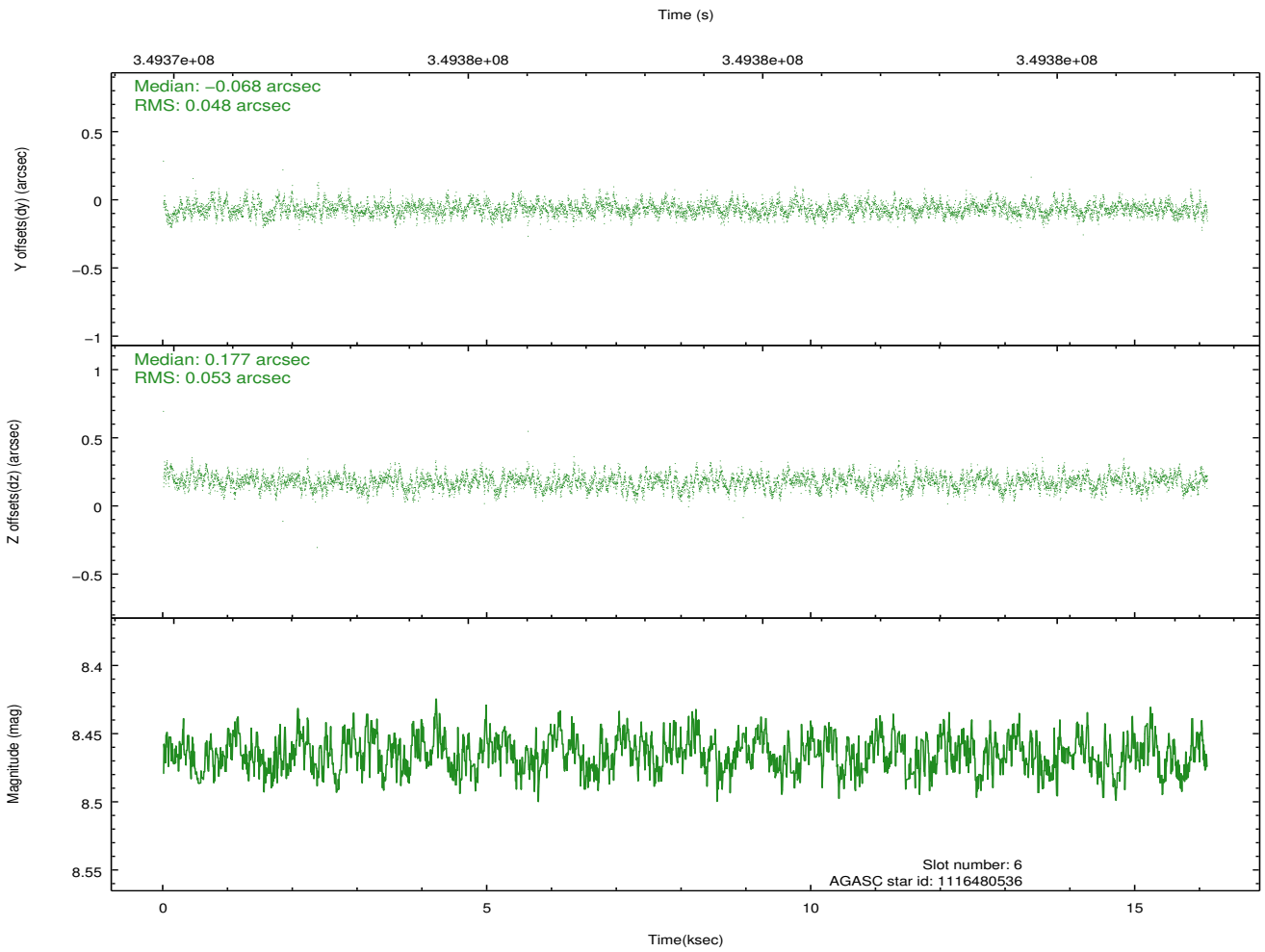
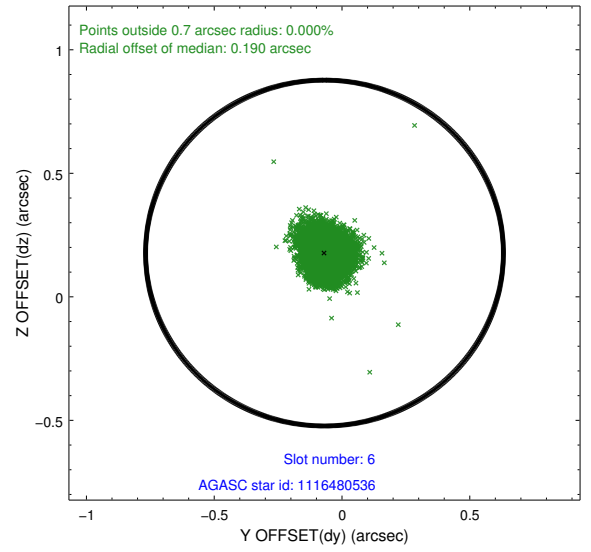
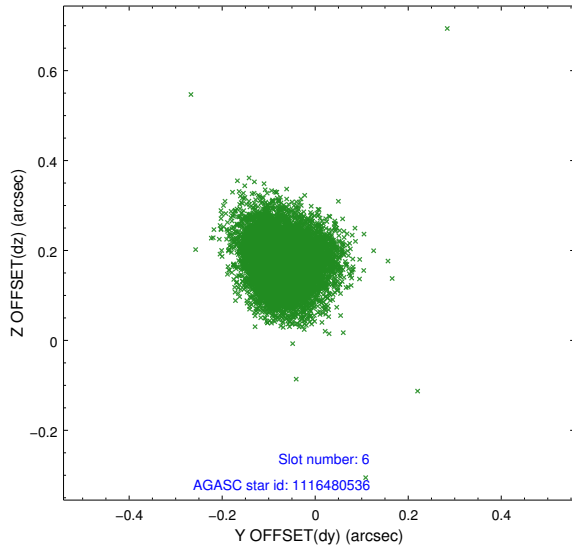
2.4.2 Slot 4



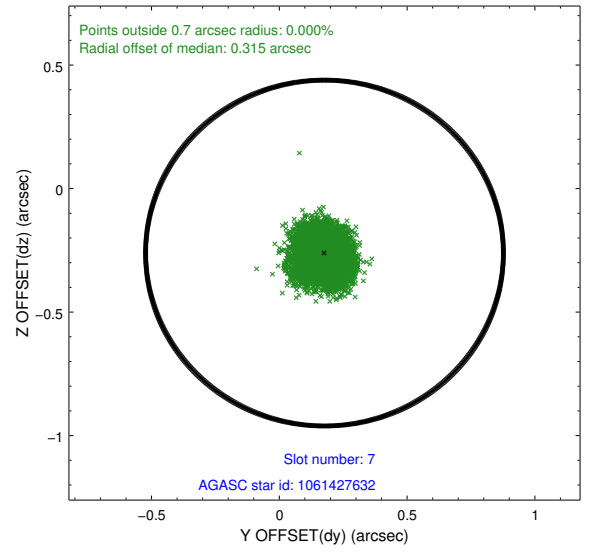
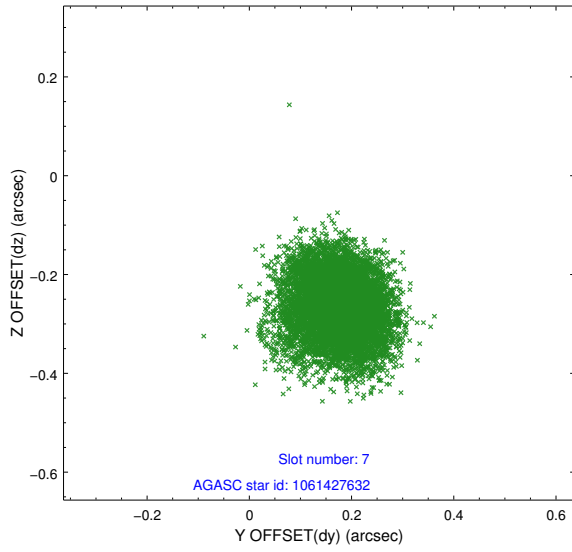
2.4.3 Slot 5



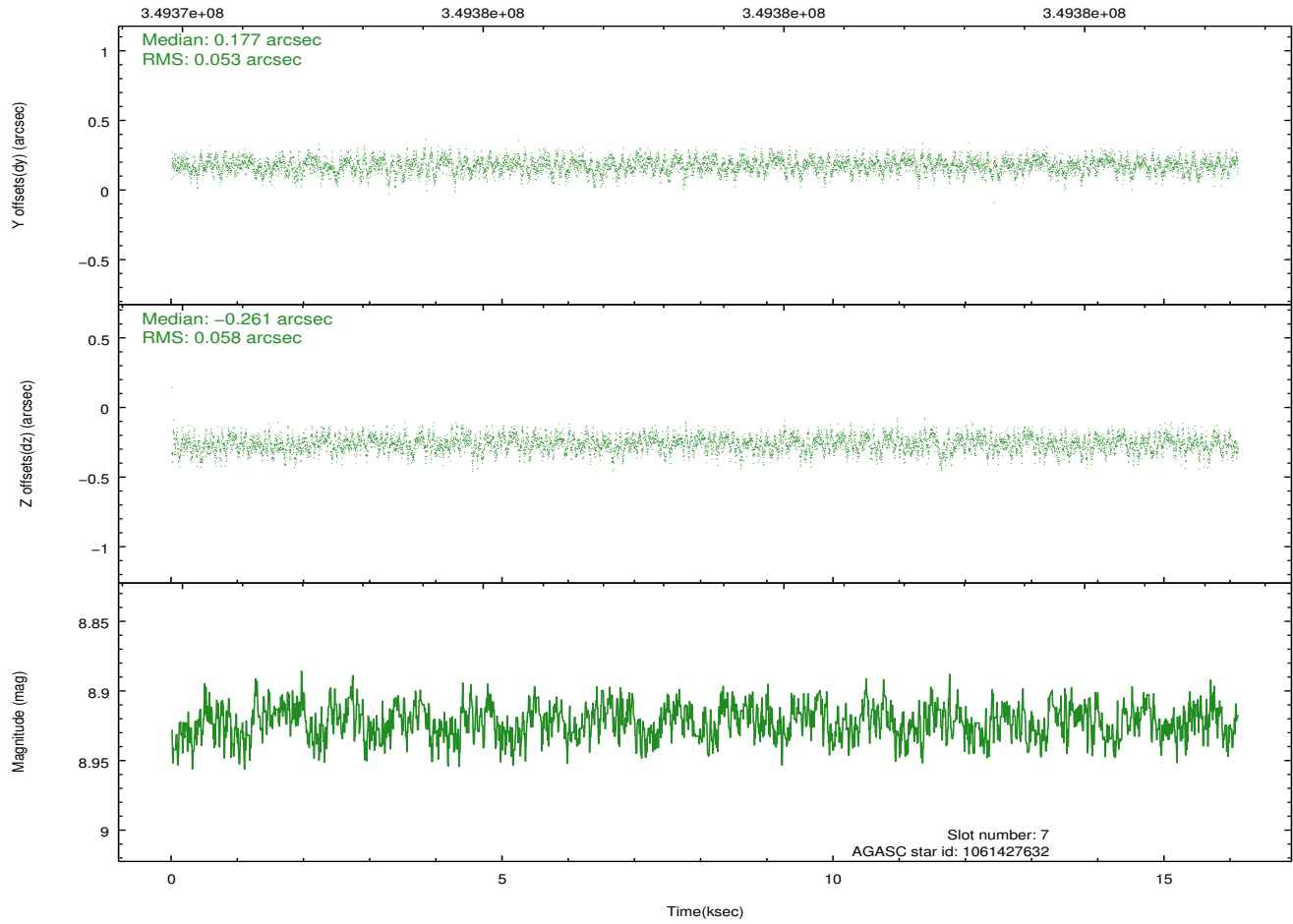
2.4.4 Slot 6



2.4.5 Slot 7

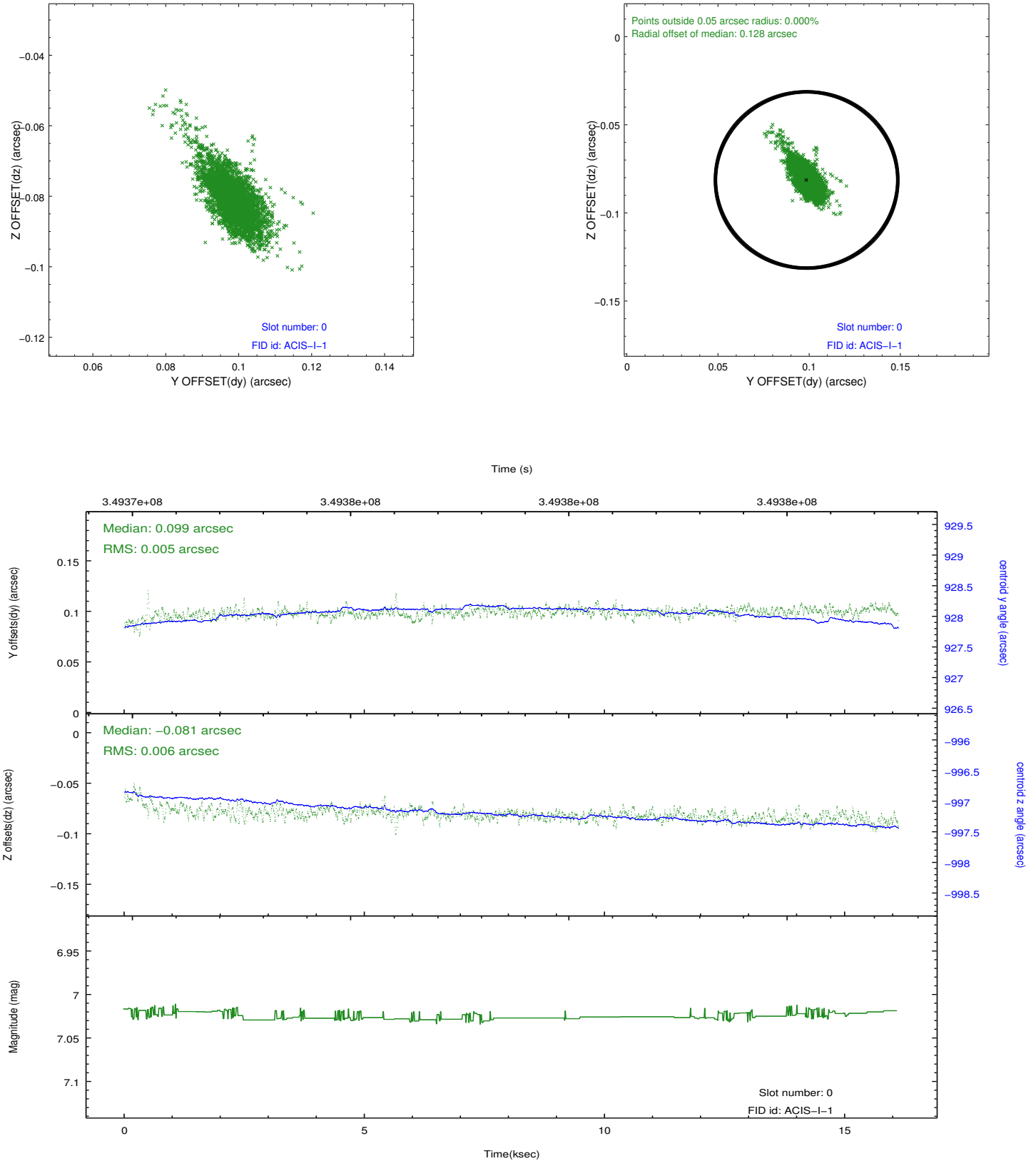


Time (s)

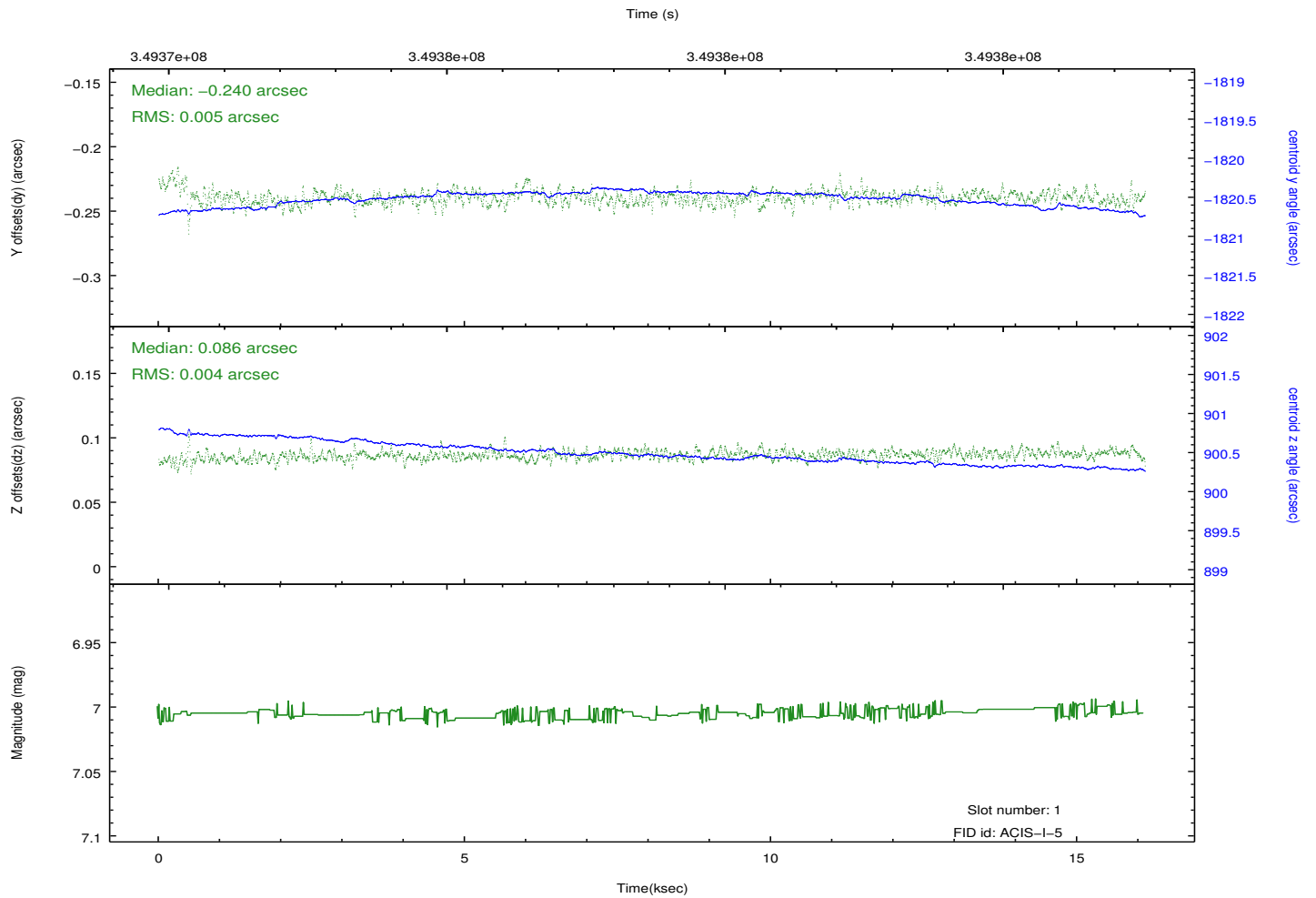
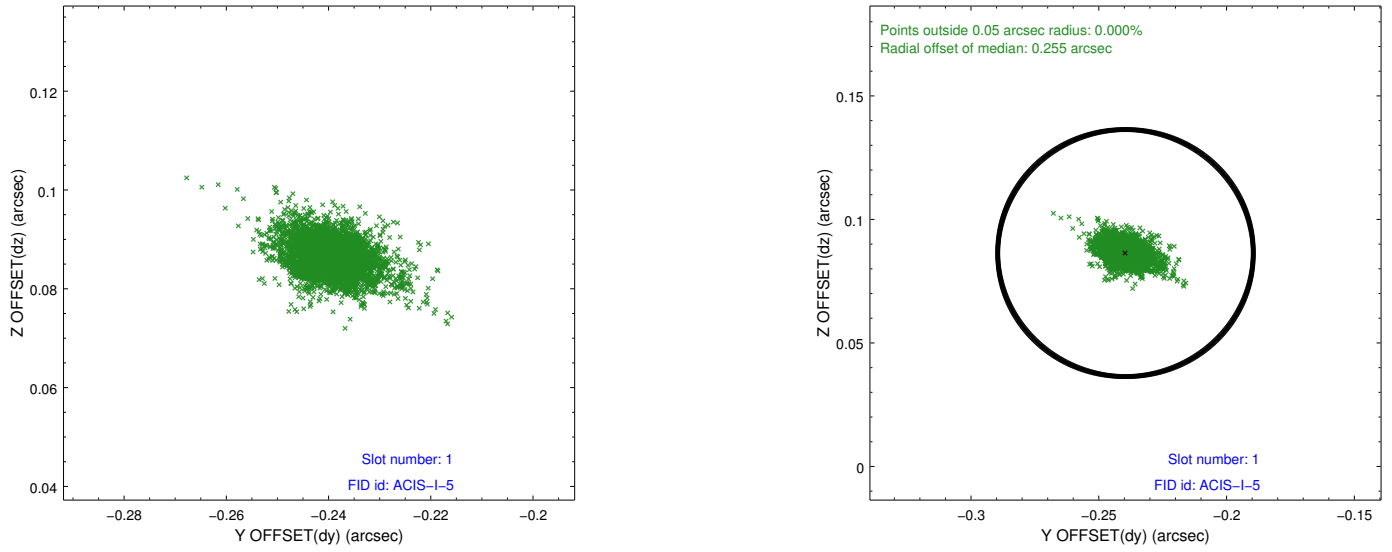


2.5 FID Slots

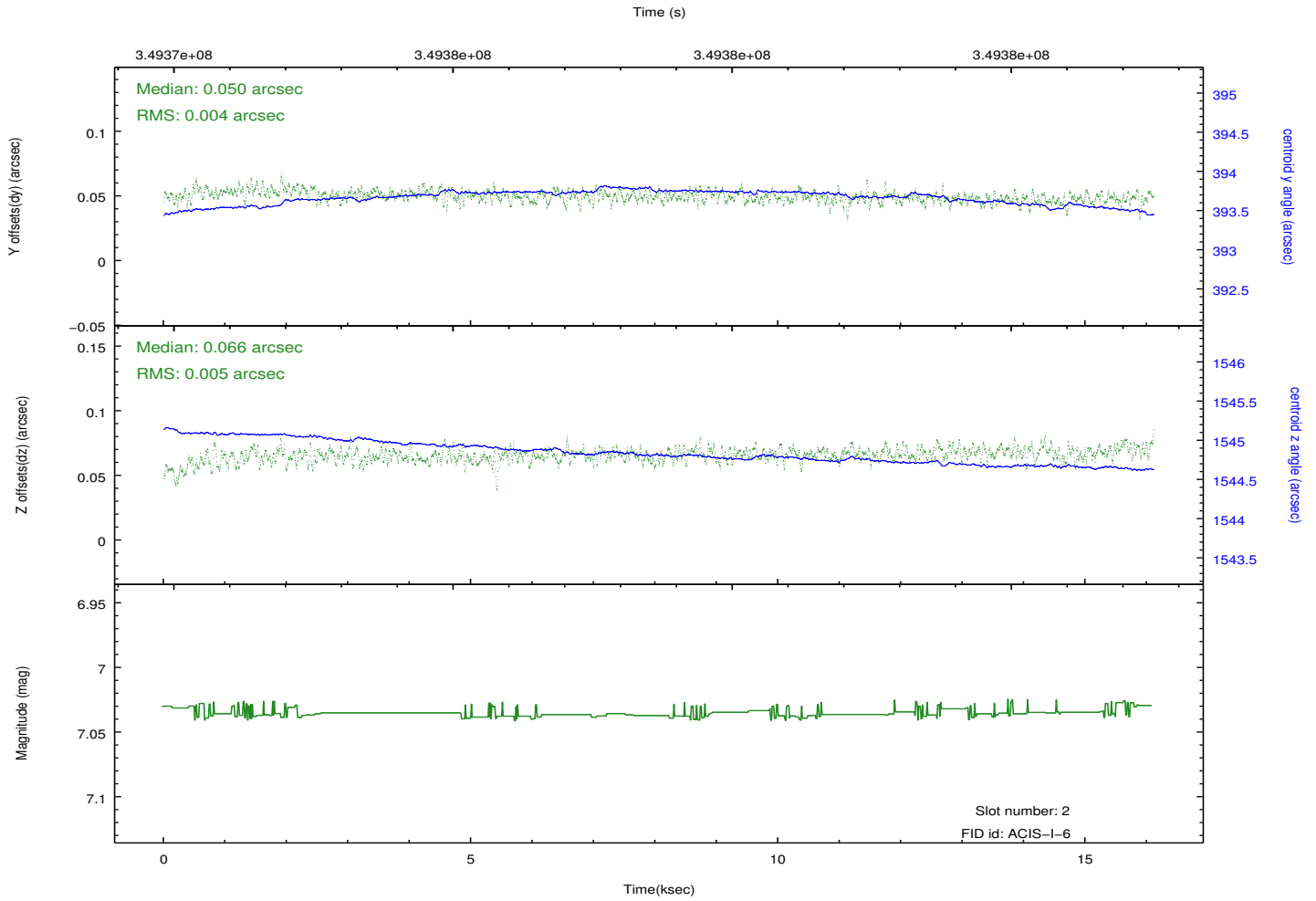
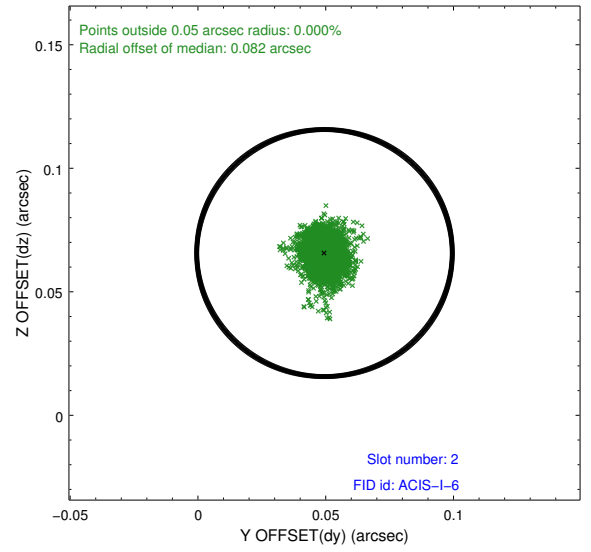
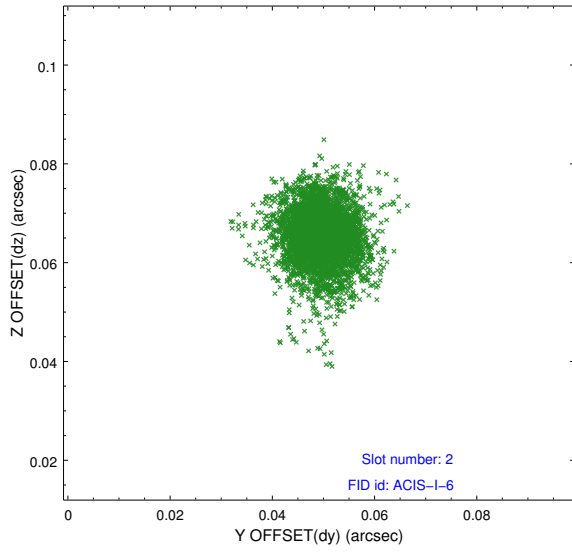
2.5.1 Slot 0



2.5.2 Slot 1



2.5.3 Slot 2



A Summary

A.1 Status

V&V Scientist	Jen Lauer
V&V Date (YYYY-MM-DD)	2012.06.04
V&V Edition	1
V&V Disposition and Status	OK
V&V Charge Time	15.0443001

A.2 Comments