

V&V Reference Report

L2 ASCDS Version : 8.4.4

Observation 9411 - L2 Version 2
Chandra X-Ray Center

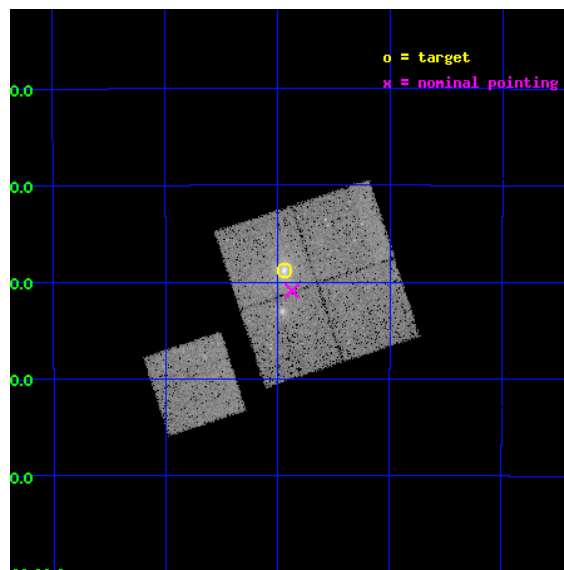
L2 Processing Date : May 10 2012

Contents

1	Front	2
2	OBI	3
2.1	OBI	3
2.1.1	Images	3
2.1.2	Bias	3
2.1.3	Parameters	4
2.1.4	Events	4
2.2	Compared Parameters	5
2.3	Aspect	6
2.4	Star Slots	9
2.4.1	Slot 3	9
2.4.2	Slot 4	10
2.4.3	Slot 5	11
2.4.4	Slot 6	12
2.4.5	Slot 7	13
2.5	FID Slots	14
2.5.1	Slot 0	14
2.5.2	Slot 1	15
2.5.3	Slot 2	16
A	Summary	17
A.1	Status	17
A.2	Comments	17

1 Front

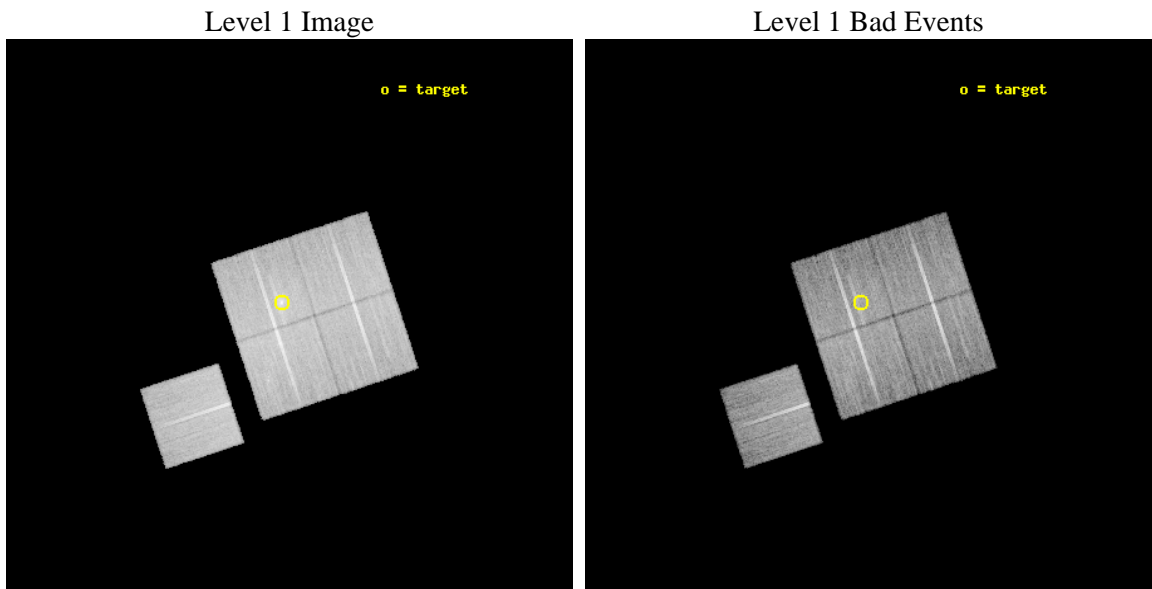
seq_num	800747	Sequence number
obs_id	9411	Observation id
title	LoCuSS: Cluster Mass Comparison with Chandra and HST -- Observational Discrepancy or Agreement in the New Millennium?	Proposal title
observer	Dr Graham Smith	Principal investigator
object	RXCJ0220.9-3829	Source name
dtcycle	0	
cycle	P	events from which exps? Prim/Second/Both
ra_targ	35.235792	Observer's specified target RA [deg]
dec_targ	-38.480056	Observer's specified target Dec [deg]
ra_nom	35.218389562064	Nominal RA [deg]
dec_nom	-38.515266015115	Nominal Dec [deg]
roll_nom	251.73055120979	Nominal Roll [deg]
revision	2	Processing version of data
ontime	20128.177243948	Sum of GTIs [s]
livetime	19865.187790107	Livetime [s]
ontime0	20134.459164679	Sum of GTIs [s]
ontime1	20131.318204343	Sum of GTIs [s]
ontime2	20134.459184587	Sum of GTIs [s]
ontime3	20128.177243948	Sum of GTIs [s]
ontime6	20137.600154877	Sum of GTIs [s]
l2events	78398	Number of level 2 events



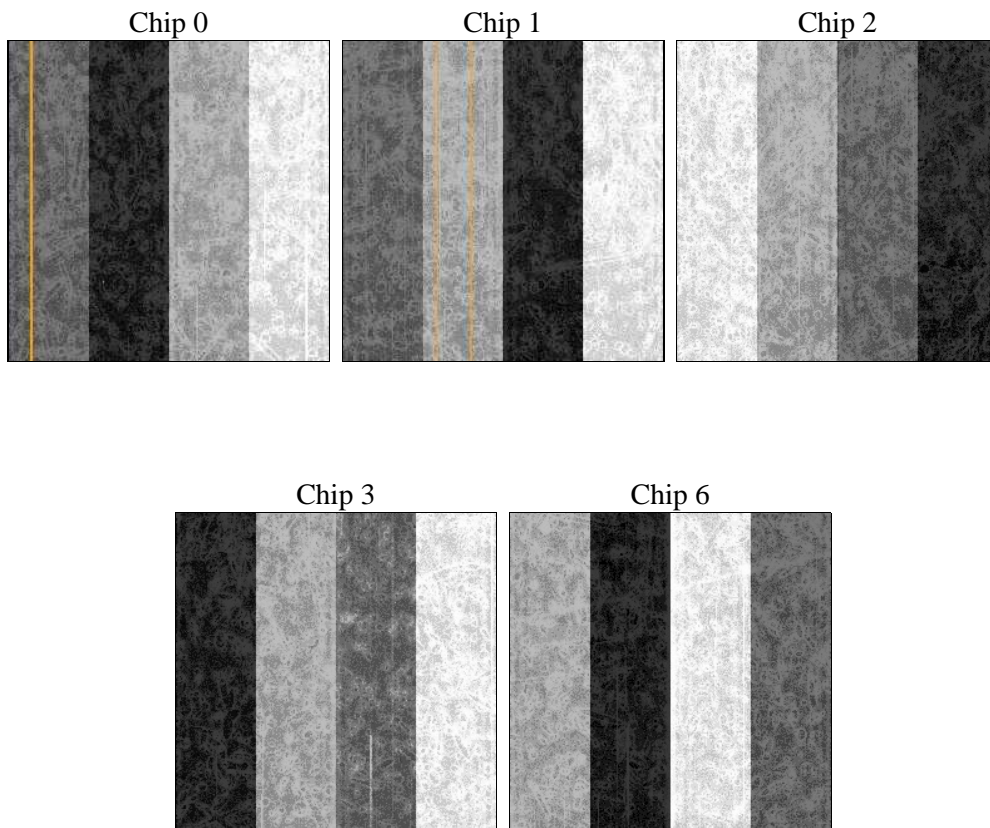
2 OBI

2.1 OBI

2.1.1 Images



2.1.2 Bias



2.1.3 Parameters

obi_num	0	Obi number	sched_exp_time	20000.000000	[s] Scheduled observation exposure time
ascdsver	8.4.4	Processing system revision	ontime	20128.177243948	Sum of GTIs [s]
caldbver	4.4.9	 	ontime0	20134.459164679	Sum of GTIs [s]
date	2012-05-10T22:01:24	Date and time of file creation	ontime1	20131.318204343	Sum of GTIs [s]
revision	2	Processing version of data	ontime2	20134.459184587	Sum of GTIs [s]
			ontime3	20128.177243948	Sum of GTIs [s]
			ontime6	20137.600154877	Sum of GTIs [s]
			l1events	844349	Number of level 1 events

2.1.4 Events

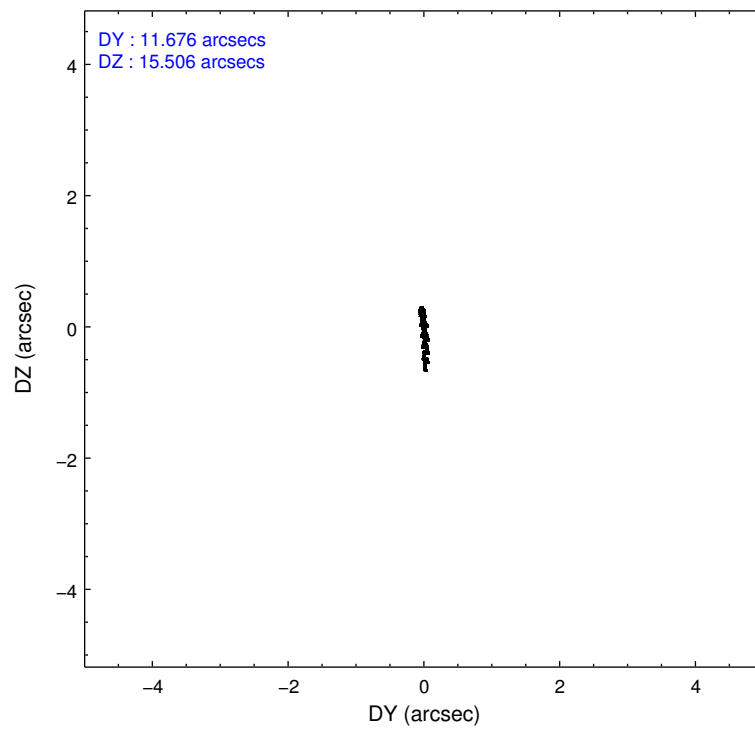
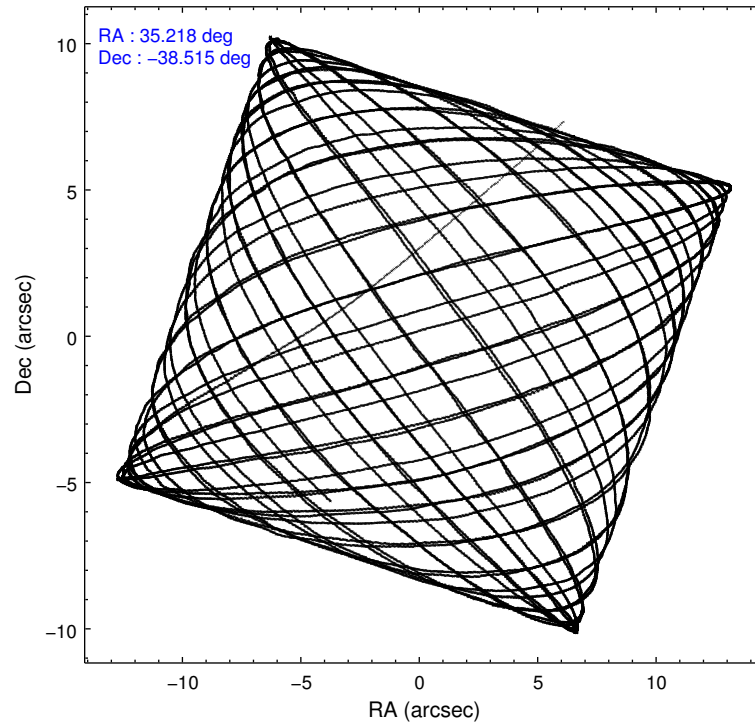
	ccd 0	ccd 1	ccd 2	ccd 3	ccd 6
level 1 events	157800	159215	181337	173989	172008
rejected events	141246	140387	163456	151471	155019
rejected %	89%	88%	90%	87%	90%

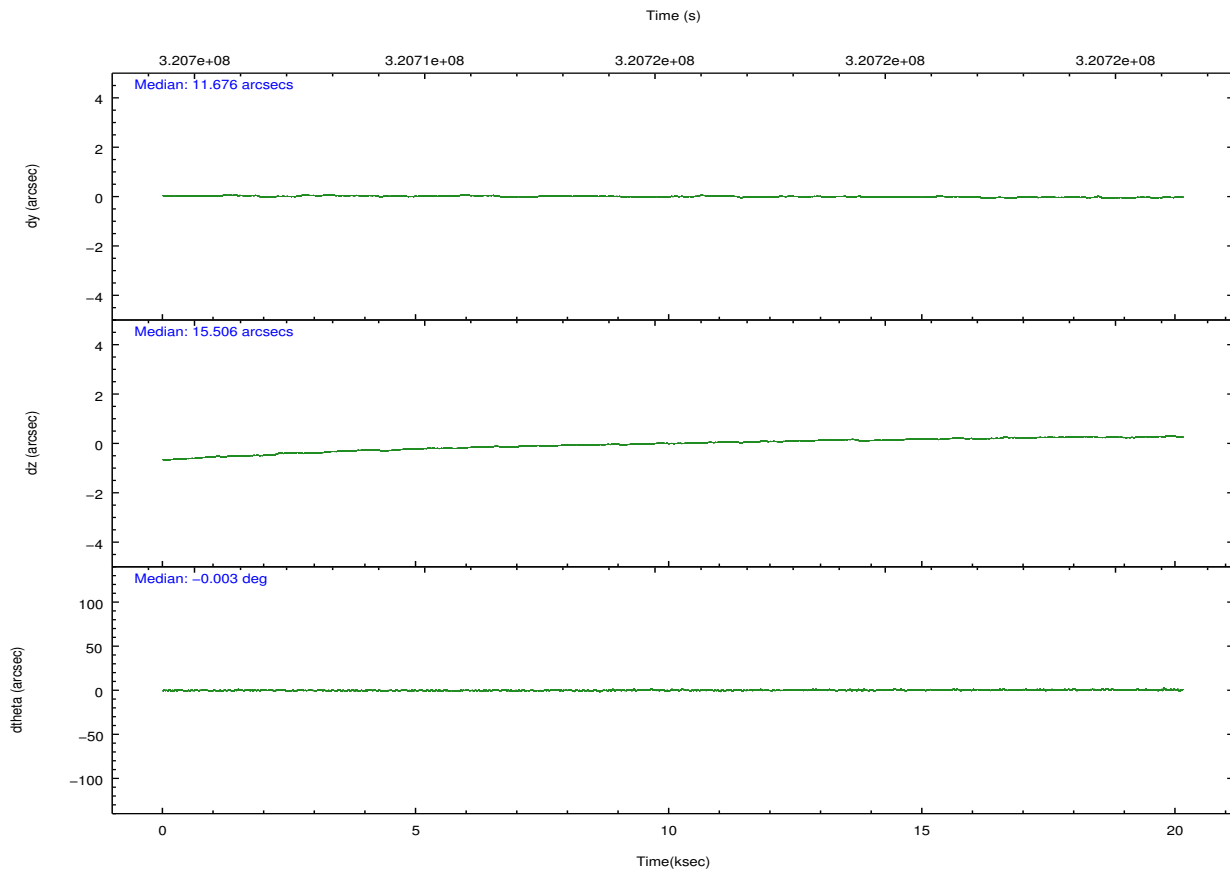
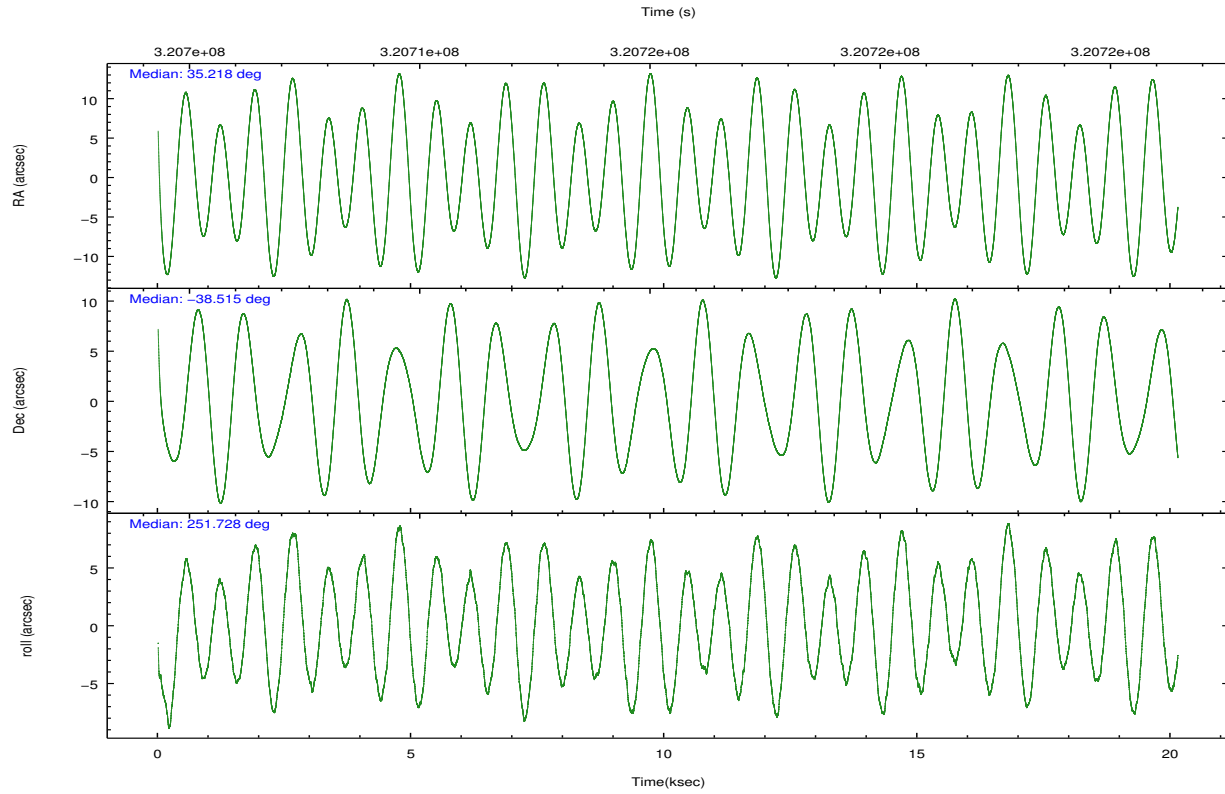
	ccd 0	ccd 1	ccd 2	ccd 3	ccd 6
grade 0 events	6058	7464	7749	11913	6350
	3%	4%	4%	6%	3%
grade 1 events	74	83	101	149	71
	0%	0%	0%	0%	0%
grade 2 events	4153	4456	4248	4159	3893
	2%	2%	2%	2%	2%
grade 3 events	1986	2061	1742	2100	1988
	1%	1%	0%	1%	1%
grade 4 events	1857	1961	1859	1943	1895
	1%	1%	1%	1%	1%
grade 5 events	6059	6567	5757	6910	6812
	3%	4%	3%	3%	3%
grade 6 events	3375	3856	3161	3336	3774
	2%	2%	1%	1%	2%
grade 7 events	134238	132767	156720	143479	147225
	85%	83%	86%	82%	85%

2.2 Compared Parameters

Parameter	Planned	Actual	Parameter	Planned	Actual
Instrument	ACIS	ACIS	Obspar format version number	7	7
Detector	ACIS-01236	ACIS-01236	Obspar file type	PREDICTED	ACTUAL
Grating	NONE	NONE	Obspar update status	NONE	UPDATED
Data mode	VFAINT	VFAINT	Number of optional ACIS chips dropped	0	0
Observation mode	POINTING	POINTING	On-chip summing requested	N	N
[deg] Pointing RA	35.211141	35.21838956206432	Subarray requested	NONE	NONE
[deg] Pointing Dec	-38.488370	-38.51526601511515	Alternating exposures requested	N	N
[deg] Pointing Roll	251.517360	251.730551209787	[s] Primary exposure time	0.000000	3.1
[mm] SIM focus pos	-0.782348	-0.7809083437167272			
[mm] SIM defocus	0	0.001439871863259334			
[mm] SIM translation stage pos	-227.592463	-227.5933067819097			
[mm] SIM translation stage offset	-6	-5.999146221020027			
[s] Observation start time (MET)	320705469.184000	320703961.24118			
Observation start date	2008-02-29T20:50:04	2008-02-29T20:26:01			
[s] Observation end time (MET)	320725469.184000	320726291.89227			
Observation end date	2008-03-01T02:23:24	2008-03-01T02:38:11			
Read mode	TIMED	TIMED			

2.3 Aspect



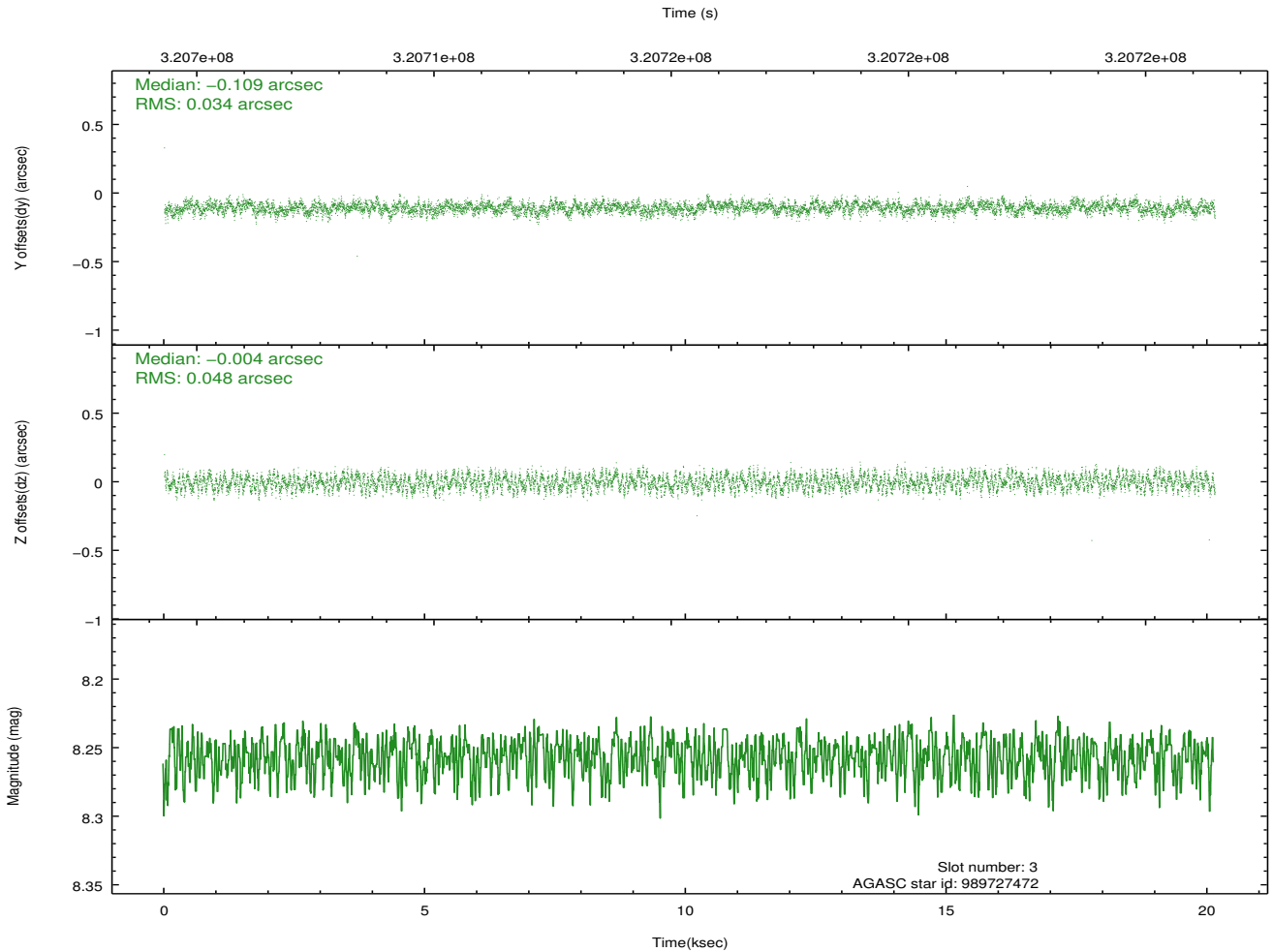
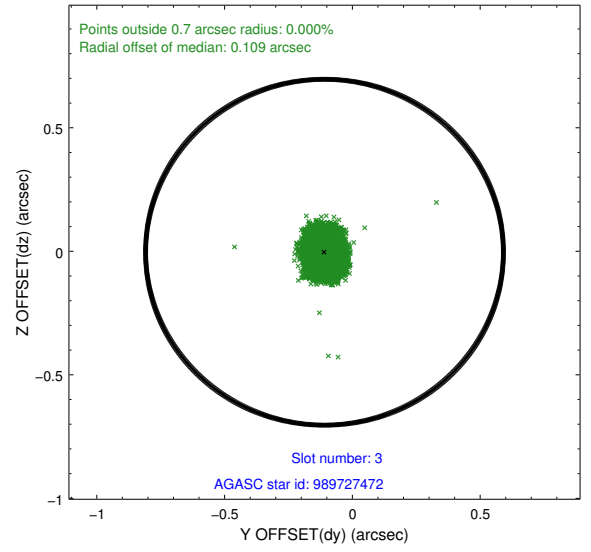
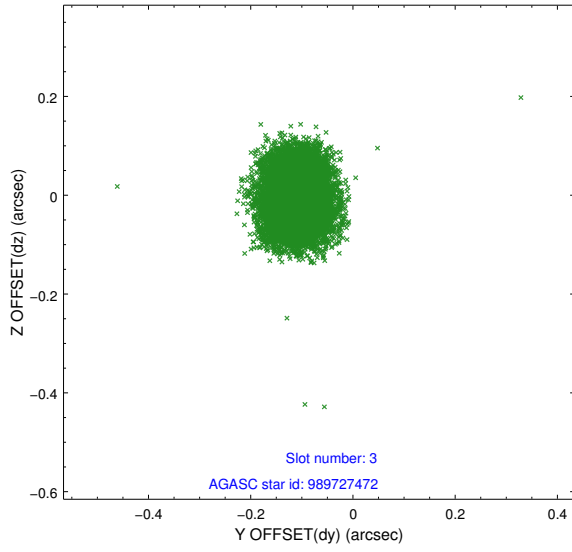


Slot Statistics

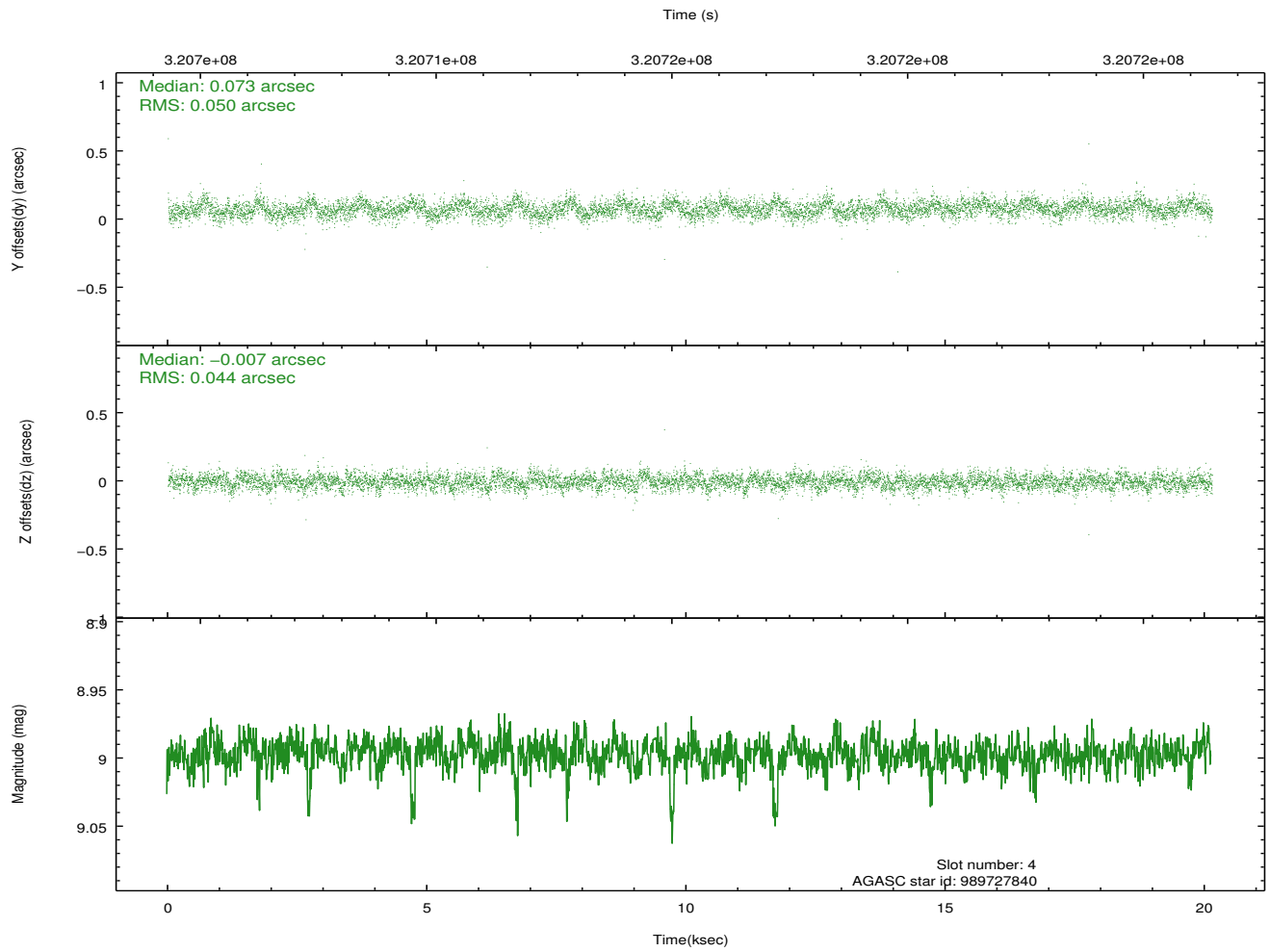
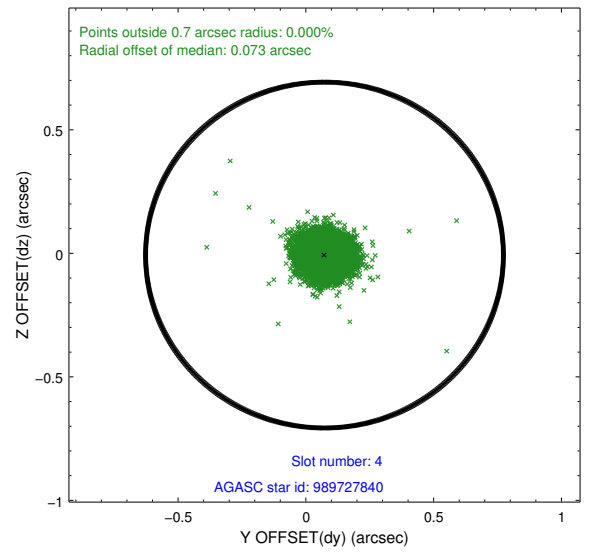
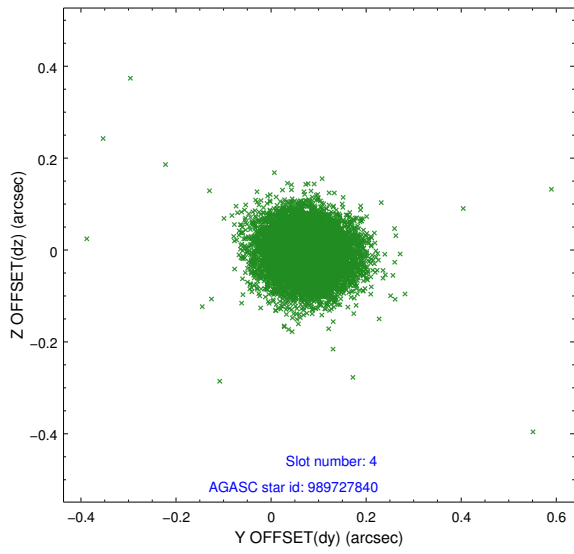
slot	status	id	mag	n_pts	med_dy	med_dz	dr1	dr2	ra	dec	mean_y	mean_z
0	FID	ACIS-I-1	7.22	4913	0.083	-0.041	0.008	0.013	0.000000	0.000000	927.86	-962.23
1	FID	ACIS-I-5	7.22	4913	-0.234	0.079	0.007	0.012	0.000000	0.000000	-1820.49	935.22
2	FID	ACIS-I-6	7.24	4912	0.060	0.033	0.008	0.015	0.000000	0.000000	393.14	1579.92
3	GUIDE	989727472	8.26	9825	-0.109	-0.004	0.062	0.098	34.626889	-37.922917	-1399.40	-2216.85
4	GUIDE	989727840	9.00	9822	0.073	-0.007	0.070	0.114	35.479198	-37.916659	-2192.07	69.96
5	GUIDE	989728728	8.25	9823	0.019	-0.217	0.064	0.099	35.467492	-38.705931	515.53	931.82
6	GUIDE	989730896	8.46	9820	0.157	-0.359	0.057	0.093	35.178864	-39.033730	1890.79	538.71
7	GUIDE	989731448	7.54	9824	-0.138	0.591	0.054	0.087	34.857635	-38.977421	1985.59	-378.49

2.4 Star Slots

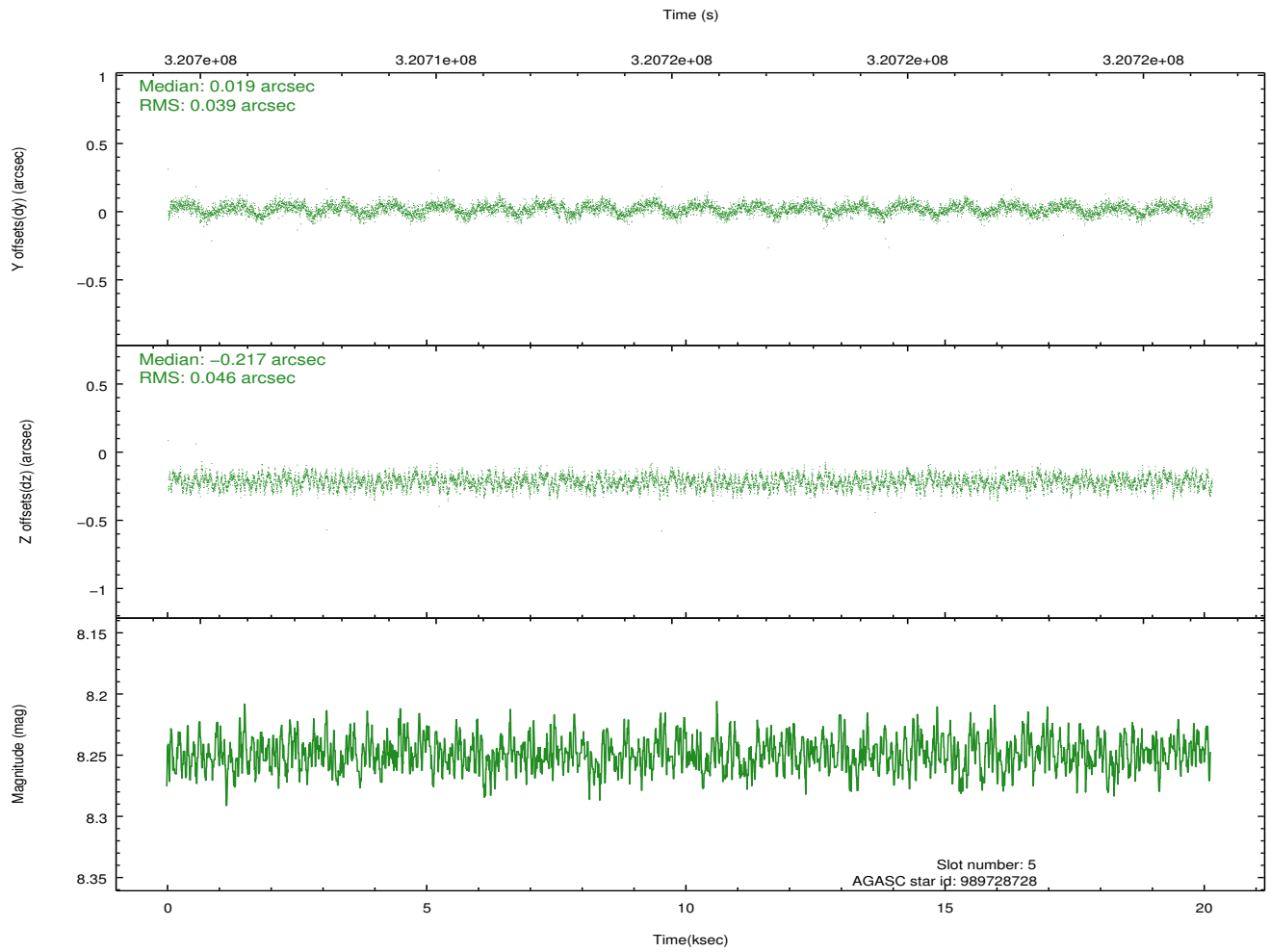
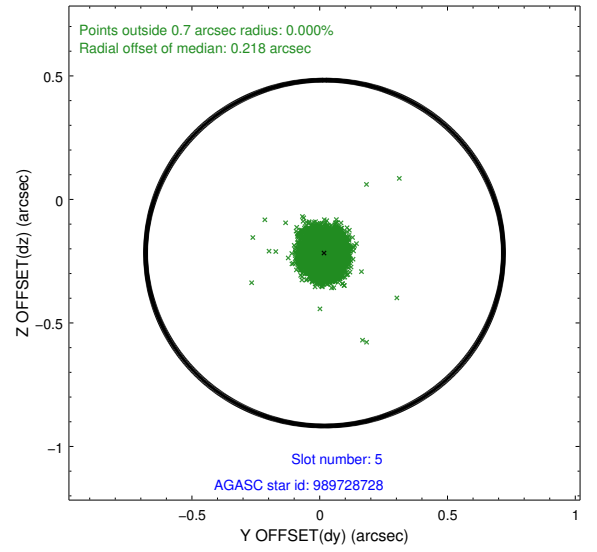
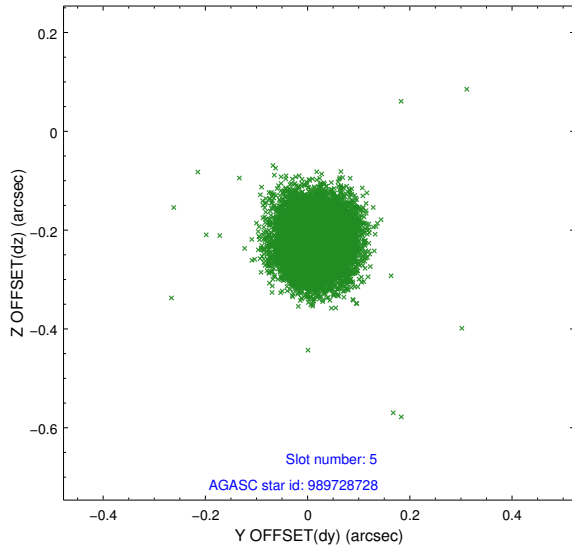
2.4.1 Slot 3



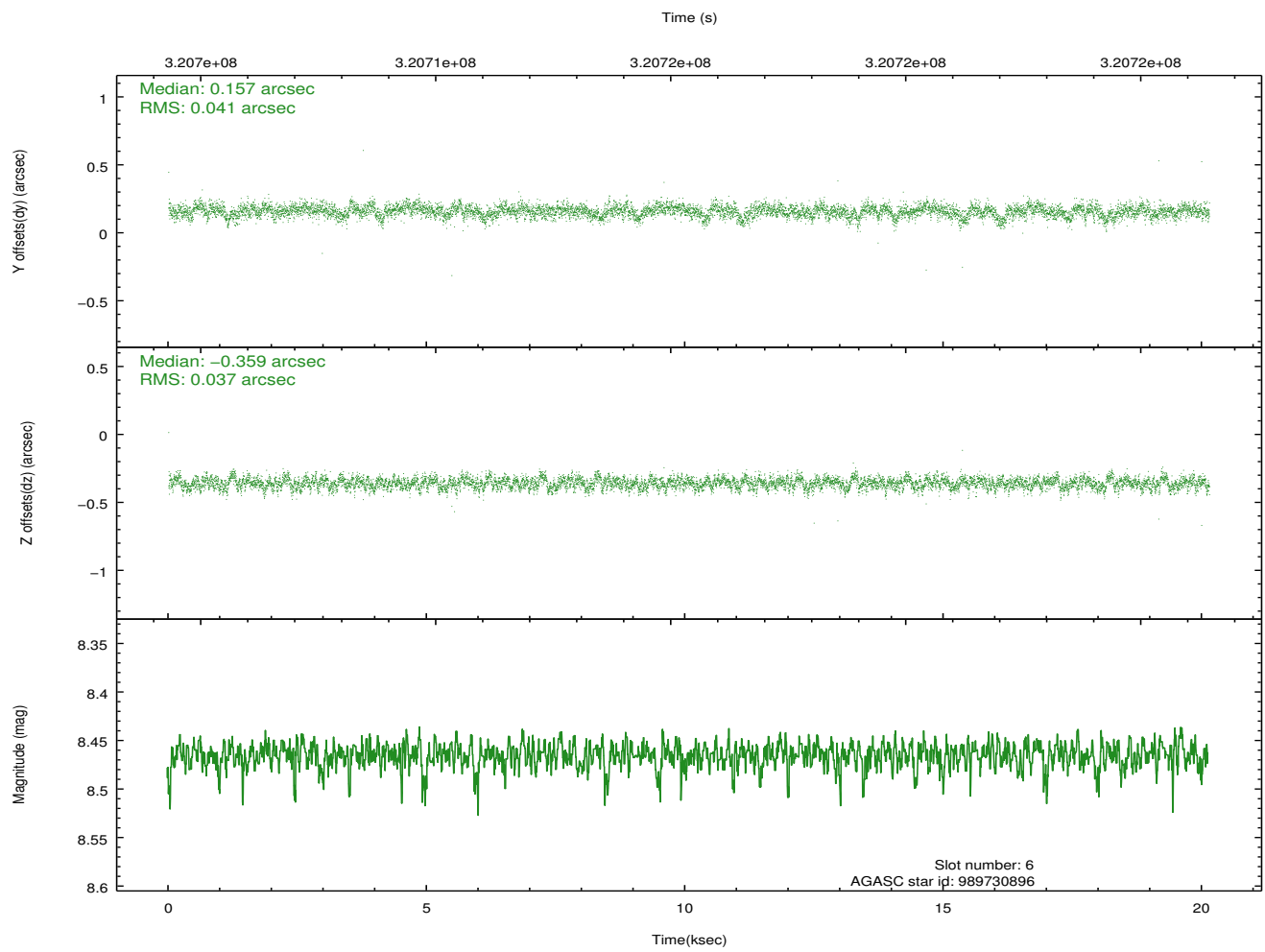
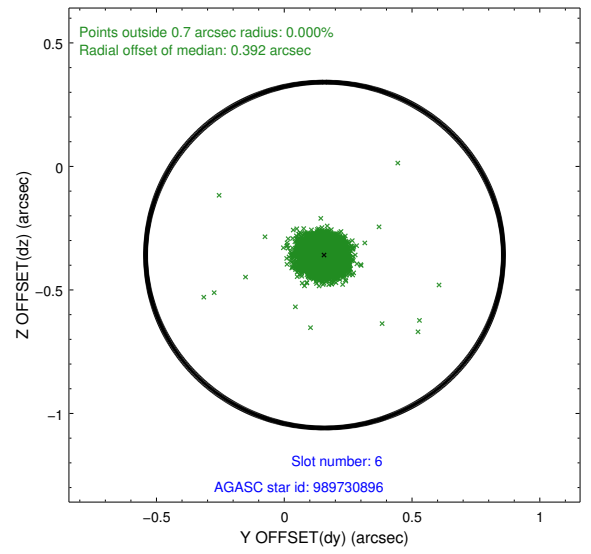
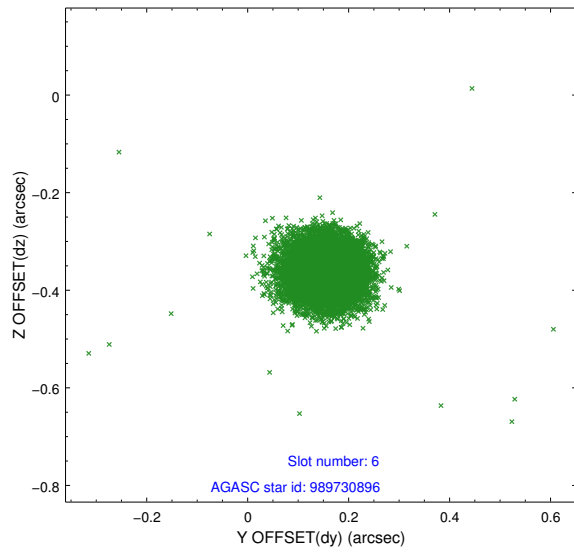
2.4.2 Slot 4



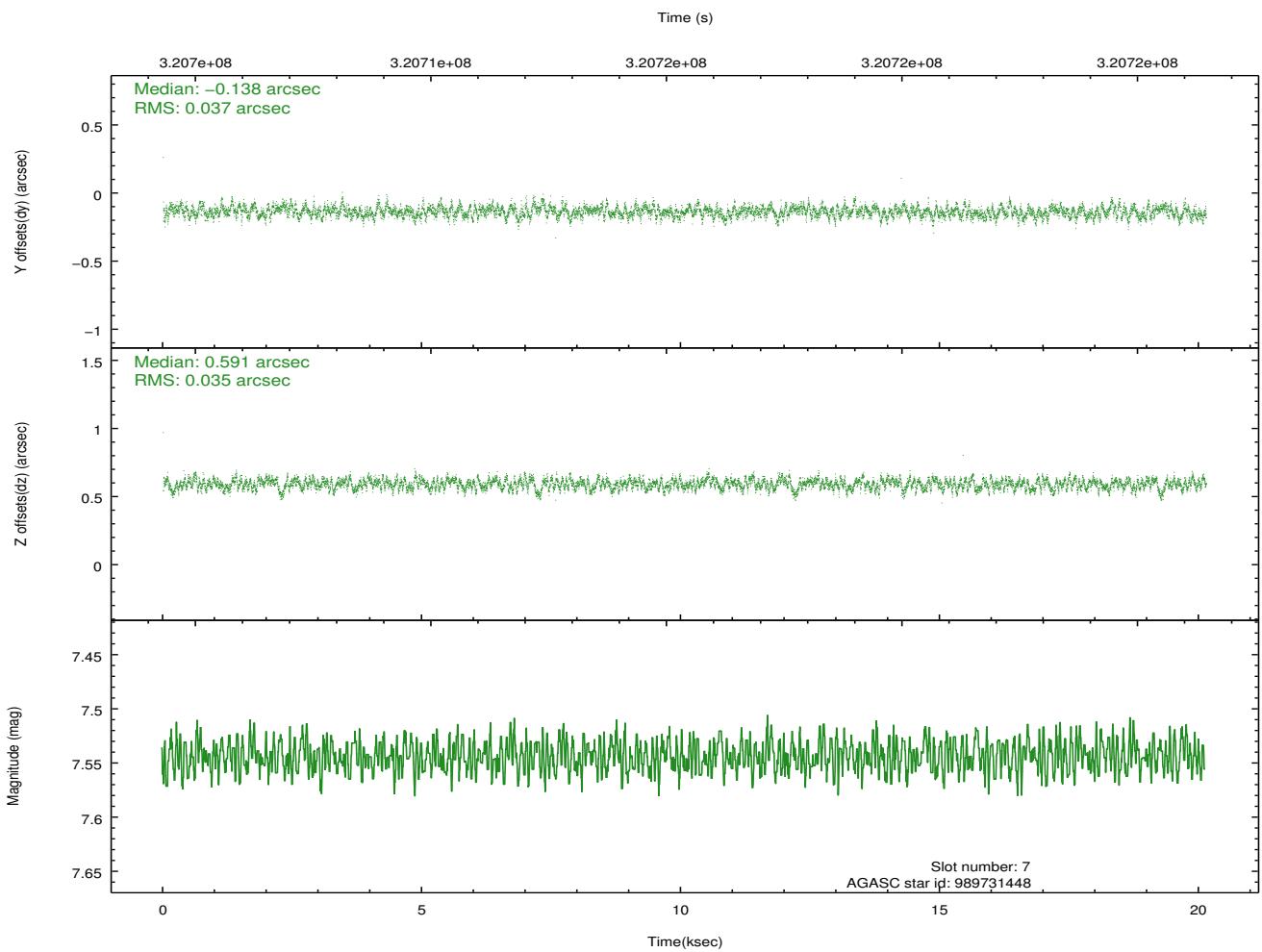
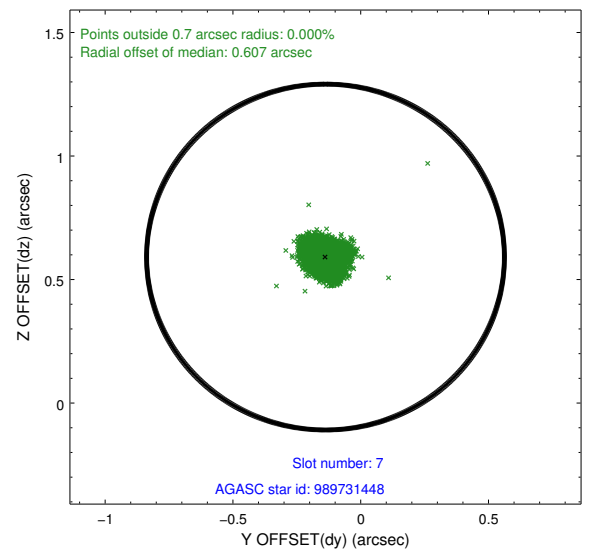
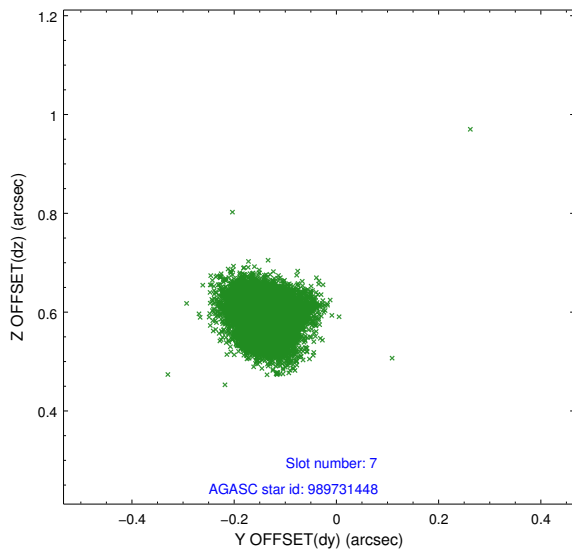
2.4.3 Slot 5



2.4.4 Slot 6

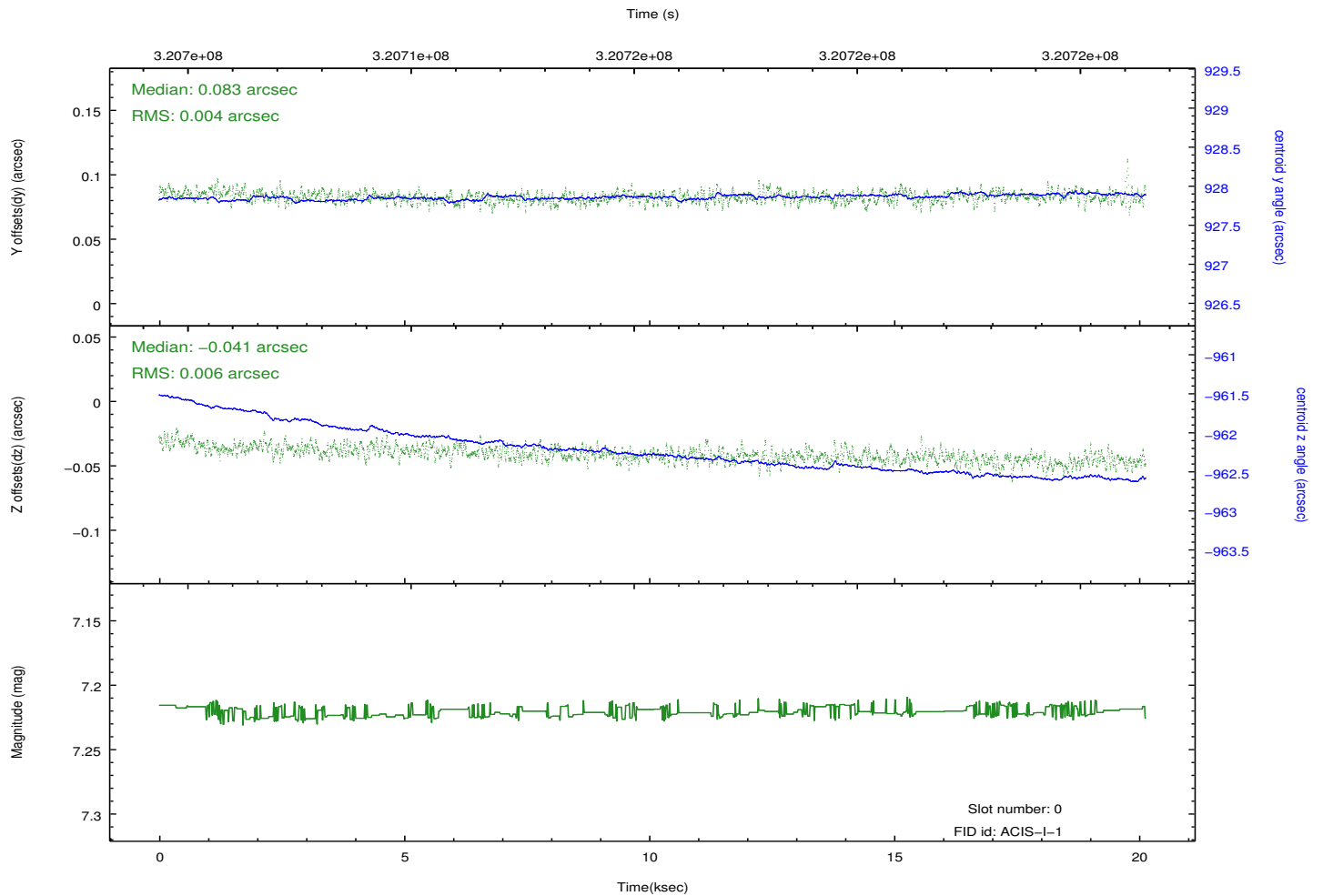
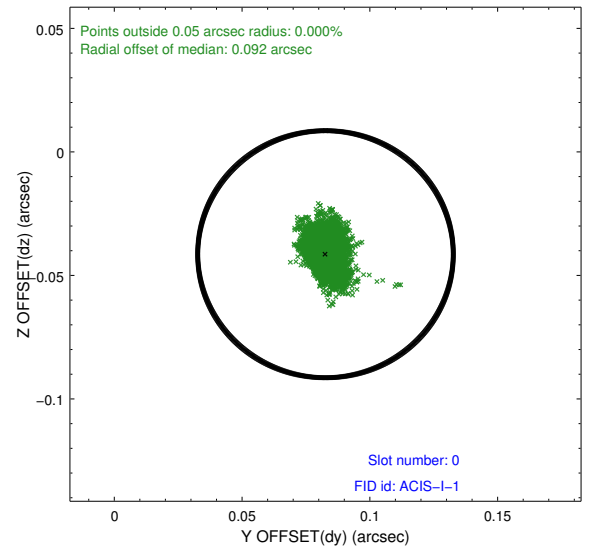
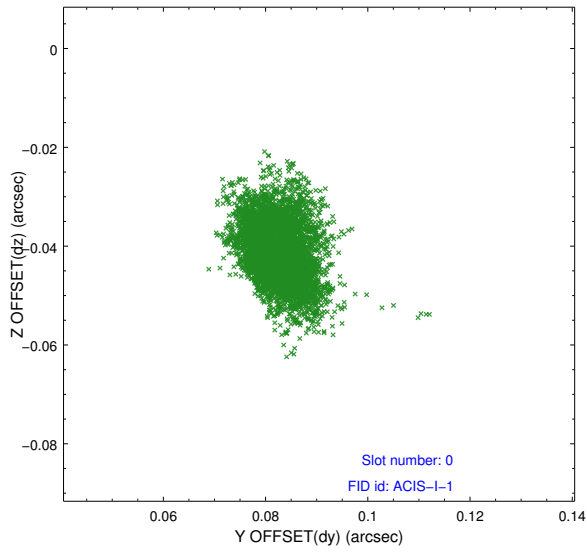


2.4.5 Slot 7

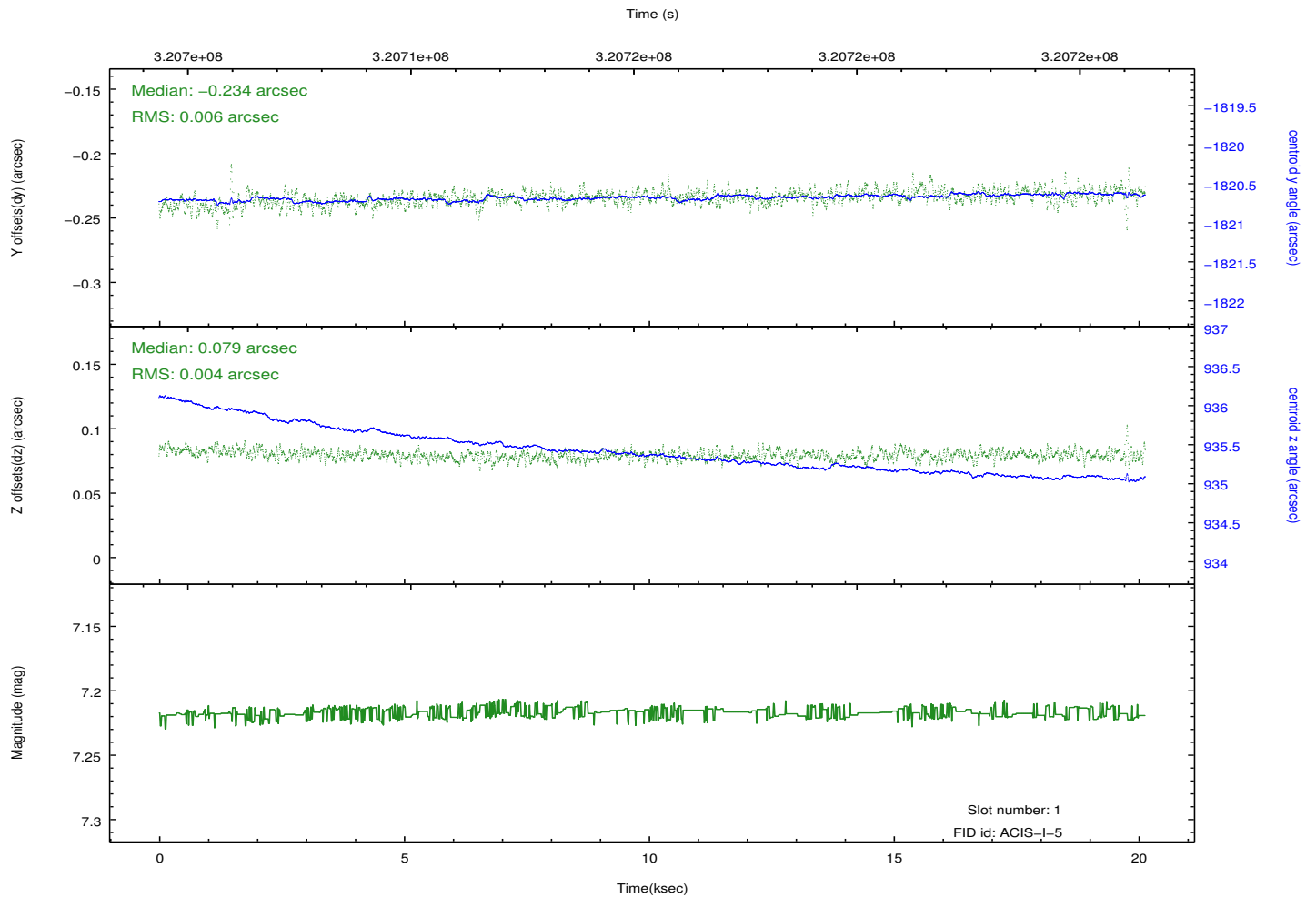
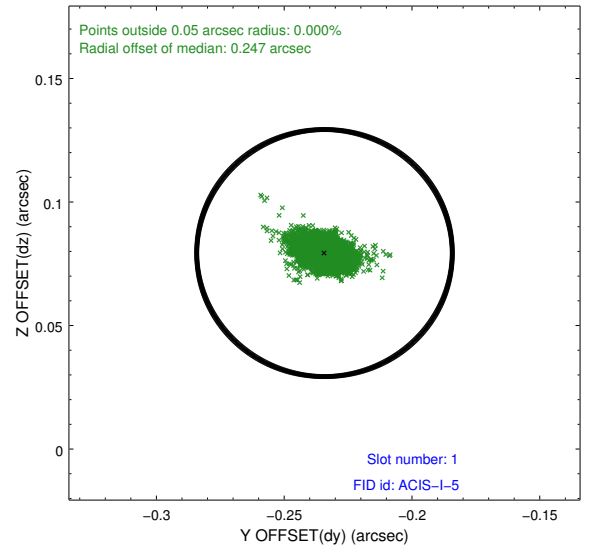
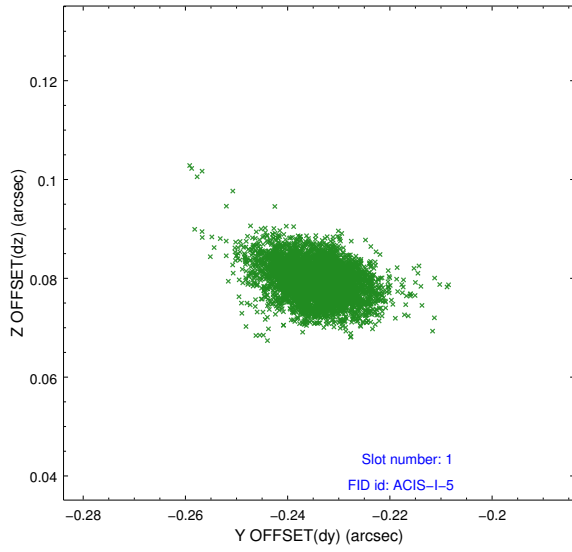


2.5 FID Slots

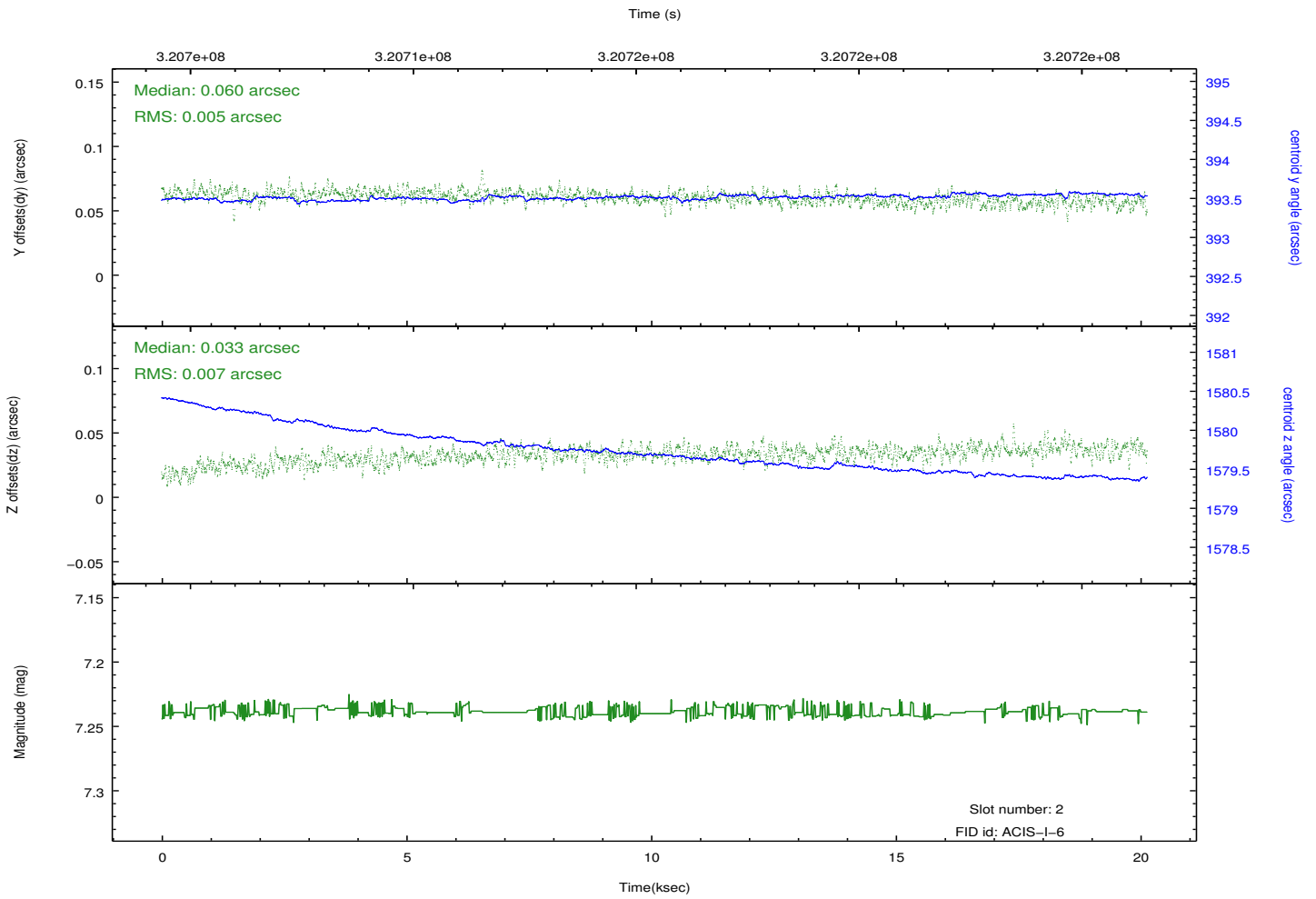
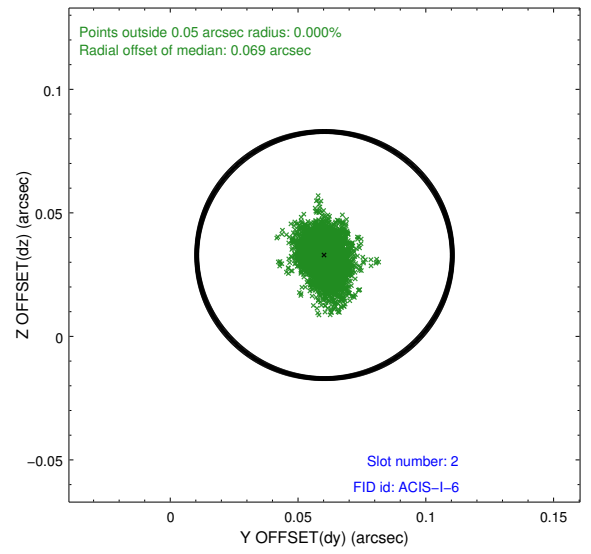
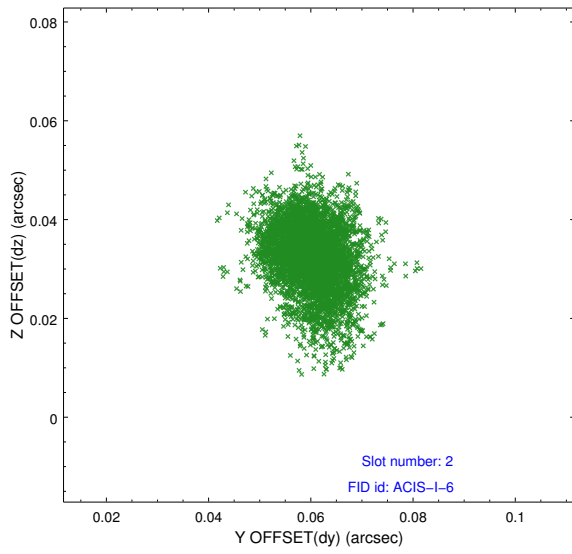
2.5.1 Slot 0



2.5.2 Slot 1



2.5.3 Slot 2



A Summary

A.1 Status

V&V Scientist	Jen Lauer
V&V Date (YYYY-MM-DD)	2012.05.14
V&V Edition	1
V&V Disposition and Status	OK
V&V Charge Time	20.1281772

A.2 Comments